



UNIVERSITY OF LEEDS

This is a repository copy of *Biogeochemical Distinctiveness of Peatland Ponds, Thermokarst Waterbodies, and Lakes*.

White Rose Research Online URL for this paper:
<https://eprints.whiterose.ac.uk/188178/>

Version: Published Version

Article:

Arsenault, J, Talbot, J, Brown, LE orcid.org/0000-0002-2420-0088 et al. (6 more authors) (2022) Biogeochemical Distinctiveness of Peatland Ponds, Thermokarst Waterbodies, and Lakes. *Geophysical Research Letters*, 49 (11). e2021GL097492. ISSN 0094-8276

<https://doi.org/10.1029/2021gl097492>

© 2022. American Geophysical Union. All Rights Reserved. Reproduced in accordance with the publisher's self-archiving policy.

Reuse

Items deposited in White Rose Research Online are protected by copyright, with all rights reserved unless indicated otherwise. They may be downloaded and/or printed for private study, or other acts as permitted by national copyright laws. The publisher or other rights holders may allow further reproduction and re-use of the full text version. This is indicated by the licence information on the White Rose Research Online record for the item.

Takedown

If you consider content in White Rose Research Online to be in breach of UK law, please notify us by emailing eprints@whiterose.ac.uk including the URL of the record and the reason for the withdrawal request.



eprints@whiterose.ac.uk
<https://eprints.whiterose.ac.uk/>

Geophysical Research Letters[®]

RESEARCH LETTER

10.1029/2021GL097492

Key Points:

- Peatland ponds are distinct from lakes; thermokarst waterbodies behave either like peatland ponds or lakes, or are a combination of both
- The distinctiveness of peatland ponds and some thermokarst waterbodies is due to their setting in climate-sensitive organic soils
- The biogeochemistry of a large portion of the world's freshwater ecosystems should not be predicted using current lake-based models and data

Supporting Information:

Supporting Information may be found in the online version of this article.

Correspondence to:

J. Arsenault,
julien.arsenault.1@umontreal.ca

Citation:

Arsenault, J., Talbot, J., Brown, L. E., Holden, J., Martinez-Cruz, K., Sepulveda-Jauregui, A., et al. (2022). Biogeochemical distinctiveness of peatland ponds, thermokarst waterbodies, and lakes. *Geophysical Research Letters*, 49, e2021GL097492. <https://doi.org/10.1029/2021GL097492>

Received 14 DEC 2021
Accepted 20 MAY 2022

Biogeochemical Distinctiveness of Peatland Ponds, Thermokarst Waterbodies, and Lakes

Julien Arsenault^{1,2} , Julie Talbot^{1,2} , Lee E. Brown³, Joseph Holden³ , Karla Martinez-Cruz^{4,5}, Armando Sepulveda-Jauregui⁴ , Graeme T. Swindles^{6,7}, Maxime Wauthy^{2,8} , and Jean-François Lapierre^{2,8} 

¹Département de géographie, Université de Montréal, Montréal, QC, Canada, ²Groupe de recherche interuniversitaire en limnologie (GRIL), Montréal, QC, Canada, ³water@leeds, School of Geography, University of Leeds, Leeds, UK, ⁴Environmental Biogeochemistry in Extreme Ecosystems Laboratory (EnBEELab), University of Magallanes, Punta Arenas, Chile, ⁵Environmental Physics, Limnological Institute, University of Konstanz, Konstanz, Germany, ⁶School of Natural and Built Environment, Queen's University Belfast, Belfast, UK, ⁷Ottawa-Carleton Geoscience Centre and Department of Earth Sciences, Carleton University, Ottawa, ON, Canada, ⁸Département des sciences biologiques, Université de Montréal, Montréal, QC, Canada

Abstract Small lentic freshwater ecosystems play a disproportionate role in global biogeochemical cycles by processing large amounts of carbon (C), nitrogen (N), and phosphorus (P), but it is unlikely that they behave as one homogenous group for the purpose of extrapolation. Here, we synthesize biogeochemical data from >12,000 geographically distinct freshwater systems: lakes, peatland ponds, and thermokarst waterbodies. We show that peatland ponds are biogeochemically distinct from the more widely studied lake systems, while thermokarst waterbodies share characteristics with peatland ponds, lakes, or both. For any given size or depth, peatland ponds tend to have dissolved organic carbon concentrations several-fold higher and are 100-fold more acidic than lakes because of the organic matter-rich settings in which they develop. The biogeochemical distinctiveness of freshwater ecosystems highlights the need to account for the fundamental differences in sources and processing of organic matter to understand and predict their role in global biogeochemical cycles.

Plain Language Summary Small freshwater bodies are major (but under-studied) contributors to the global cycling of carbon and nutrients. A large number of these ecosystems develop in climate-sensitive organic soils. Using a dataset of >12,000 geographically distinct freshwater bodies, we show that many of these ecosystems, namely peatland ponds and some waterbodies developing in permafrost, are structurally and functionally different than their more widely studied lake counterparts. Peatland ponds have distinct combinations of pH, nutrients, and organic carbon concentrations compared to lakes, and they are commonly much more acidic and richer in organic carbon for any given size or depth. Biogeochemically, permafrost waterbodies behave either as peatland ponds, as lakes, or as a combination of both. Our results emphasize the need to consider the distinction between peatland ponds, permafrost waterbodies, and lakes to better understand and forecast the role of small freshwater ecosystems in global biogeochemical cycles.

1. Introduction

Small waterbodies are major components of global biogeochemical cycles, despite their limited areal extent, as they display high biogeochemical processing rates compared to larger lakes, terrestrial, or marine ecosystems (Downing, 2010; Kortelainen et al., 2006). Very small waterbodies (<0.001 km²) have been estimated to account for 15% of the carbon dioxide (CO₂) and ~37% of the diffusive methane (CH₄) emissions from lentic systems, despite only representing 8.6% of the global area of static surface freshwater bodies (Holgerson & Raymond, 2016; Rosentreter et al., 2021). An unquantified portion of small waterbodies consists of ponds commonly found in peatlands (Belyea & Lancaster, 2002), and thermokarst waterbodies (lakes and ponds) that form following water accumulation in soil depressions after the subsidence of thawing permafrost (Vonk et al., 2015). Thermokarst waterbodies account for approximately 25% of the total area covered by open freshwaters in the Arctic (Wauthy et al., 2018) and are estimated to cover a total of ~1,300,000 km² of the northern circumpolar permafrost region (Olefeldt et al., 2016). Estimates of the extent of peatland ponds are currently limited to the boreal-arctic domain where peatland waterbodies cover ~260,000 km² (Olefeldt et al., 2021). Thermokarst waterbodies and peatland ponds are highly reactive, with CO₂ and CH₄ fluxes estimated to be up to 10- and 2-fold higher, respectively,

than lakes and impoundments, but these estimates are based on scarce data when compared to lakes (DeSontro et al., 2018; Hamilton et al., 1994; Kuhn, Varner, et al., 2021; Laurion et al., 2010; Pelletier et al., 2014; Serikova et al., 2019).

Lakes and ponds have no clear-cut definition, and their distinction is usually based on size, mostly surface area. Beyond size, the interaction of peatland ponds and thermokarst waterbodies with the surrounding landscape is different to non-thermokarst and non-peatland lakes and impoundments developing in geological depressions (hereafter simply referred to as lakes) because of the absence of extended watersheds (Arsenault et al., 2019; Holden et al., 2018; Kokelj & Jorgenson, 2013). Peatland ponds, especially, differ from lakes because they develop in organic-rich peat deposits. Thermokarst waterbodies are included in a vast group of systems formed by periglacial processes and comprise lakes and ponds that develop either in mineral or organic-rich permafrost and yedoma (carbon-rich, fine-textured, frozen aeolian sediments) (Elder et al., 2018; Kokelj & Jorgenson, 2013; Laurion et al., 2010). This results in a wide variety of transparencies and trophic conditions (Vonk et al., 2015; Wauthy et al., 2018) that often occupy extreme ends of lake gradients, but few studies have differentiated the effect of the surrounding matrix (organic or mineral) of thermokarst waterbodies on their biogeochemistry (Heslop et al., 2015). Hence, we postulate that while waterbodies form a continuum along environmental gradients, systems generally identified as peatland ponds and thermokarst waterbodies differ from lakes because of the large influence that climate and surficial material have on their development (Foster, King, et al., 1988; Kokelj & Jorgenson, 2013) and biogeochemistry (Kuhn, Thompson, et al., 2021; Wik et al., 2016).

Despite the growing interest in studying peatland ponds and thermokarst waterbodies given their responses to global change (Karofeld & Tõnisson, 2014; Serikova et al., 2019; Walter Anthony et al., 2018), knowledge of these systems is lagging behind other freshwater ecosystems. Because of the unique settings in which they develop, peatland ponds and thermokarst waterbodies are likely to show atypical combinations of morphometric and chemical properties among lentic systems. Recent studies have described the distribution and characteristics of peatland ponds and thermokarst waterbodies in specific regions of the world (e.g., Kuhn, Varner, et al., 2021; Stolpmann et al., 2021; Wik et al., 2016) or characterized the biogeochemistry of globally distributed freshwater systems without differentiating the matrix in which they develop (e.g., Abell et al., 2012; Sobek et al., 2010). However, currently, most freshwater models do not consider the heterogeneity in the biogeochemical processes among different types of lentic systems (Jones et al., 2018), limiting the robustness of regional estimates of C fluxes (Zwart et al., 2018) and their integration in earth system models. In this context, our aim was to identify the common and distinguishing features of lakes, peatland ponds and thermokarst waterbodies, in order to determine if these different ecosystems should warrant system-specific scaling relationships and aid our understanding of such waterbodies. We focus on biogeochemical indicators that are central to ecosystem functioning and that are widely reported: pH, dissolved organic carbon (DOC), total nitrogen (TN), and total phosphorus (TP) concentrations.

2. Methods

2.1. Data Compilation

We initially classified lentic freshwater ecosystems in three broad categories, based on the nomenclature used in the articles from which data were extracted: (a) lakes, which develop in geological depressions not created by periglacial processes and in non-peatland settings; (b) thermokarst waterbodies, created by periglacial processes regardless of the matrix (organic or mineral) in which they develop; and (c) peatland ponds, defined as water filled depressions in organic soils not influenced by permafrost. All waterbodies found in peatlands of the continuous and discontinuous permafrost regions were considered as the result of thawing processes and thus categorized as thermokarst waterbodies.

We gathered morphometrical (area, depth) and chemical (pH, DOC, TN, TP) data for 11,357 lakes worldwide, 827 thermokarst waterbodies from the Arctic circumpolar and the Himalaya regions, and 291 peatland ponds from North America, Europe, and Patagonia, from published and unpublished sources (Figure 1, Text S1, S2, and S3 in Supporting Information S1). We excluded systems that were clearly another type of aquatic ecosystem than lake, thermokarst waterbody, or peatland pond (e.g., hydroelectric reservoirs, retention basins, vernal

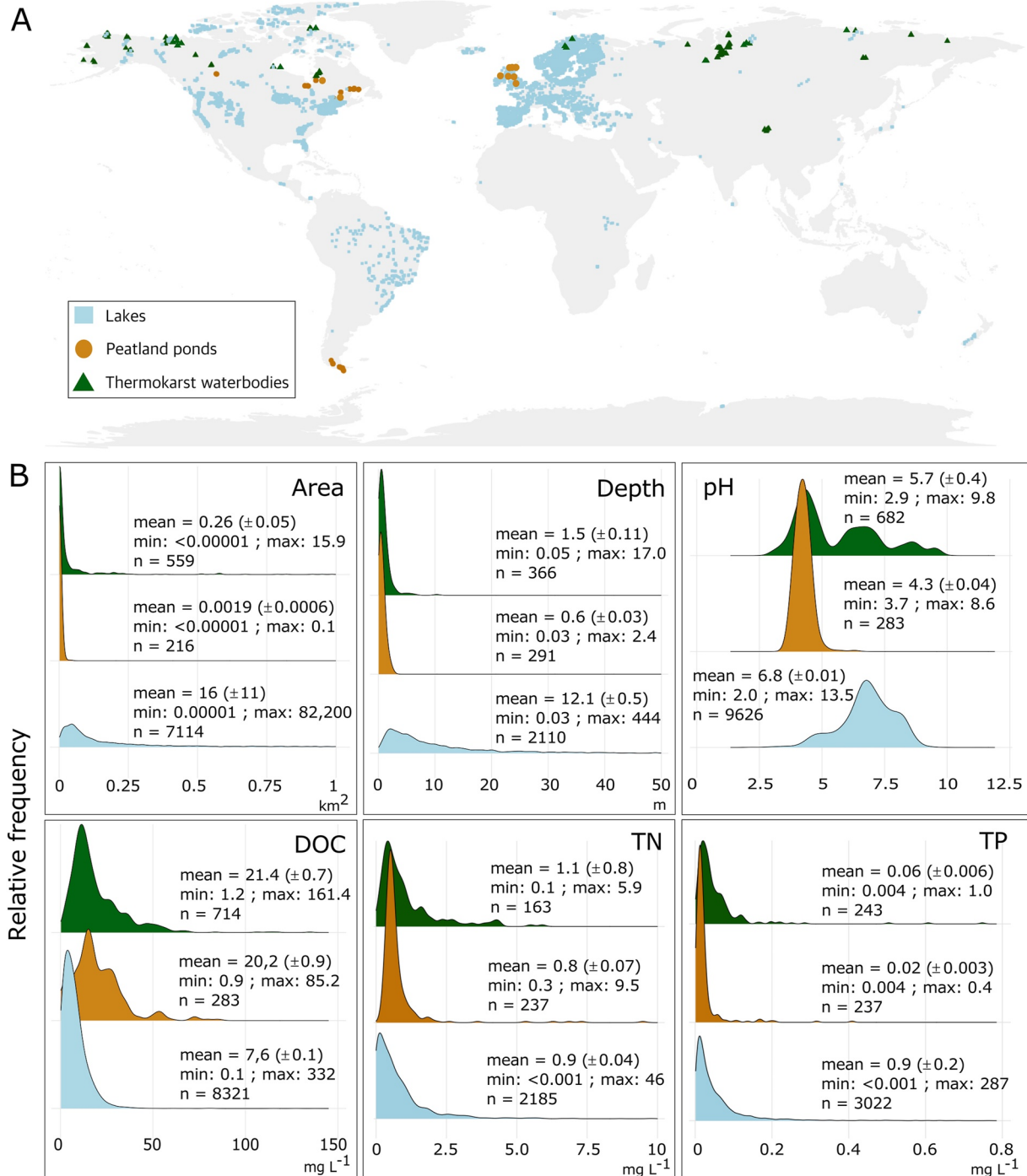


Figure 1. Biogeochemical properties of globally distributed peatland ponds, thermokarst waterbodies, and lakes. (a) Global distribution of freshwater ecosystems for which we gathered morphometrical and chemical data. (b) Relative frequency distributions, and mean (\pm standard error), minimum, and maximum values for area, depth, pH, dissolved organic carbon (DOC), total nitrogen (TN), and total phosphorus (TP) concentrations.

ponds). To avoid pseudoreplication and double-counting issues, we excluded duplicates from our dataset based on matching coordinates. Where repeated datasets were available for a variable in a single waterbody, means were calculated and used to average sampling effects of covariates such as seasonality and/or sample collector effects.

2.2. Statistical Analysis

The categories (lakes, thermokarst waterbodies, and peatland ponds) we compared were broad representations and include systems found in relatively distinct environmental conditions. To compare the properties of freshwater ecosystems according to these groupings, we first ran general linear models (GLM) with biogeochemical variables as response variables and categories as predictors. However, to uncover in greater detail the environmental gradients associated with waterbody biogeochemistry and test the a priori classification, we used data-driven k-means analyses followed by principal component analyses, and a discriminant analysis. We also created a classification tree to determine the variables linked to each ecosystem's distinctiveness (see Text S3 in Supporting Information S1 for the detailed methodology).

3. Results and Discussion

3.1. The Biogeochemistry of Globally Distributed Peatland Ponds, Thermokarst Waterbodies, and Lakes

The dataset we assembled encompasses a total of 12,475 observations, ranging from small and shallow freshwater ecosystems located in agricultural settings, permafrost regions, and peatlands, to very large and deep lakes with watersheds spanning thousands of square kilometers (Figure 1). This mosaic of landscapes includes a highly diverse range of aquatic ecosystems, with large variations in dissolved C and nutrient concentrations. The small amount of available data from peatland ponds and thermokarst waterbodies compared to lakes results in imbalanced sample sizes but our results nonetheless highlight major differences among the systems in both morphometrical (area and depth) and chemical variables (DOC, pH, TN, and TP), especially when comparing lakes to peatland ponds (Figure 2).

The a priori classification of our dataset shows that area and depth, which are often used to define lakes and ponds, are typically lower in peatland ponds and thermokarst waterbodies than in lakes (GLM: $n = 7,678$; $P < 0.001$, and $n = 2,563$; $P < 0.001$, respectively, Figure 1b, Table S1 in Supporting Information S1). There may be a bias for data availability toward large versus small lakes (Stanley et al., 2019), as we report that 50% of lakes are $>0.32 \text{ km}^2$ (Figure 1b). This differs from remote-sensing studies that estimated that 96% of the world's lakes are $<0.1 \text{ km}^2$ (Cael et al., 2017; Verpoorter et al., 2014), but it is unclear whether or not small peatland ponds and thermokarst waterbodies are included as lakes in these analyses. Regardless, peatland ponds in our dataset never exceeded 0.1 km^2 and 66% of thermokarst waterbodies were $<0.01 \text{ km}^2$, suggesting that there is a true difference in the mean and upper limit for area and depth for peatland ponds compared to lakes, and that thermokarst waterbodies cover a range that encompasses both lakes and peatland ponds, while being skewed toward smaller values. Lake depth and area are limited by the geomorphology of the landscape and the mass water balance of the system. Peatland ponds and thermokarst waterbodies are dynamic systems that expand and contract over time, sometimes on a daily basis (Karofeld & Tönisson, 2014), in relation to climatic, biological, and physicochemical factors. In contrast, most lake depths and areas are rather stable in time when the landscape is undisturbed by human activities (Downing, 2010; Wetzel, 2001). Peatland ponds and thermokarst waterbodies can shrink and disappear following drainage (Bouchard et al., 2020; Foster, Wright Jr., et al., 1988), terrestrialization through vegetation growth, peat accumulation (Payette et al., 2004), or increased evapotranspiration (Riordan et al., 2006). These systems can, albeit rarely, reach thousands of square meters in extent for peatland ponds and several square kilometers for thermokarst systems as adjacent waterbodies may coalesce after bank erosion or soil organic matter (OM) decomposition (Bouchard et al., 2020; Foster & Fritz, 1987; Kokelj & Jorgenson, 2013), releasing millennial-old C in the process (Walter Anthony & Anthony, 2013). With permafrost regions and temperate wetlands being highly sensitive to global change, future trends in peatland pond and thermokarst waterbody coverage and their influence on global biogeochemistry are particularly uncertain.

There are very few data on the biogeochemistry of peatland ponds, and those that exist originate primarily from temperate peatlands characterized by an organic and acidic matrix. This results in higher DOC concentrations (GLM; $P < 0.001$) and lower water pH ($P < 0.001$) when compared to lakes (Figures 1b and 2, Table S1 in Supporting Information S1). In colder climates, many thermokarst waterbodies similarly develop in OM-rich soils, coherent with the higher DOC concentrations ($P < 0.001$) and lower pH ($P < 0.001$) than lakes (Figures 1b and 2). In these peatland ponds and thermokarst waterbodies, the extensive interface between the oxygenated and DOC-concentrated water, and the anoxic character of the surrounding organic soil, creates ideal conditions for high biogeochemical activity. This sustains both elevated C emissions (peatland ponds, range = 20–103 g

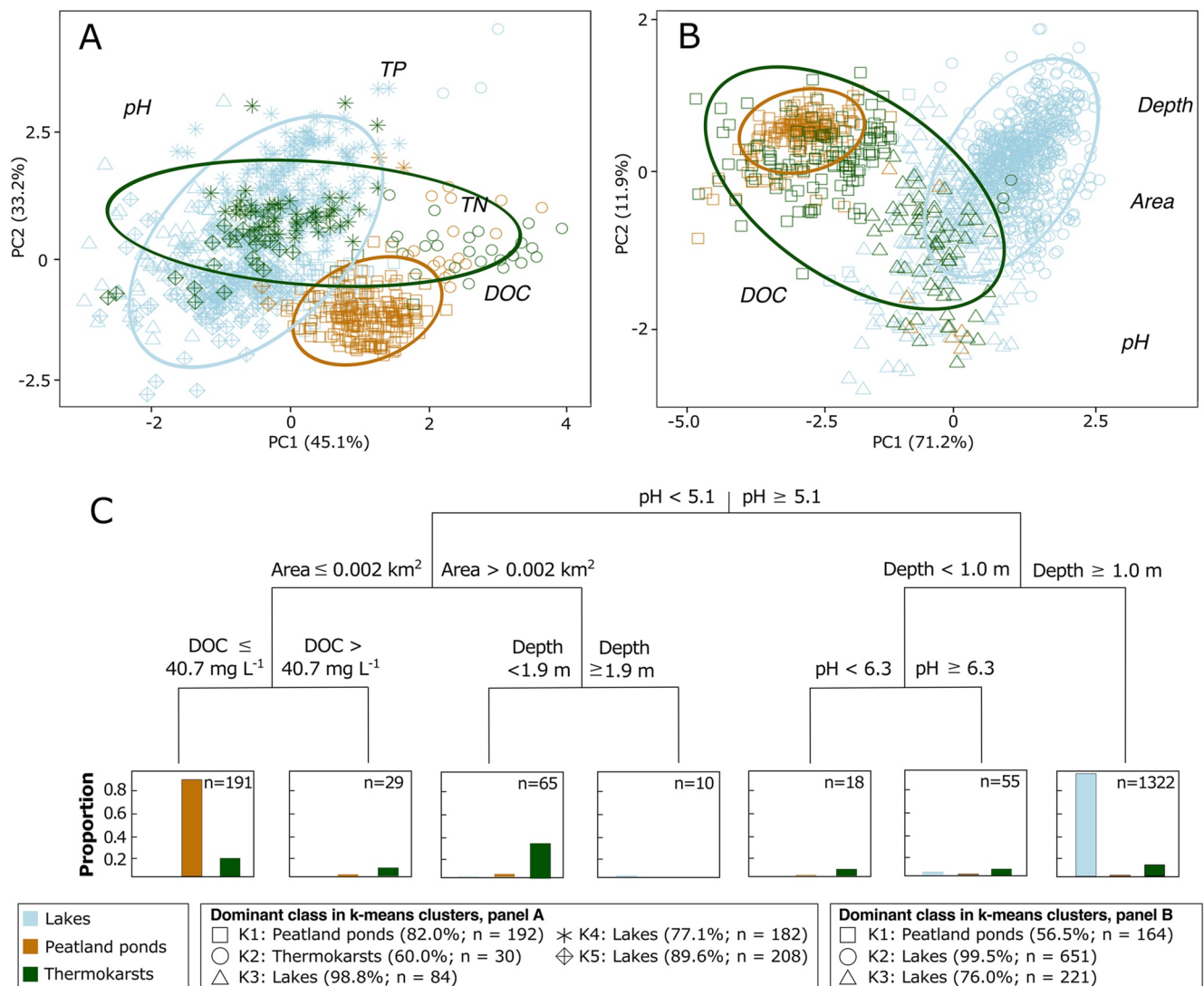


Figure 2. The distinctiveness of peatland ponds, thermokarst waterbodies, and lakes is highlighted when comparing their different morphometric and biogeochemical properties. Principal component analysis of (a) water chemistry focusing on sites for which pH, dissolved organic carbon (DOC), total phosphorus (TP), and total nitrogen (TN) concentrations were available ($n = 837$), and (b) small waterbodies of less than 0.1 km^2 for which data for morphometric properties and DOC and pH were available ($n = 1,235$). Color code represents a priori classification mentioned in previous studies, whereas shape of the signs corresponds to k-means clusters (see Tables S2 and S3 in Supporting Information S1 for details). (c) Classification tree showing the distinction between lake and peatland pond biogeochemistry, and the ambivalent behavior of thermokarst waterbodies ($n = 1,690$, including 1,347 lakes, 166 peatland ponds, and 177 thermokarst waterbodies). Leaves of terminal nodes show the number of categorized waterbodies ($n=$) and the proportion of the systems predicted.

$\text{C m}^{-2} \text{ yr}^{-1}$; thermokarst waterbodies, range = $219\text{--}1934 \text{ g C m}^{-2} \text{ yr}^{-1}$), and nutrient release from decomposition processes as previously documented (McEnroe et al., 2009; Pelletier et al., 2014; Sepulveda-Jauregui et al., 2015; Serikova et al., 2019).

A large quantity of nutrients is processed within lakes where light penetration and water temperature influence their biogeochemical cycling (Cory & Kling, 2018; Maranger et al., 2018). However, generally lakes receive most of their nutrients from their watershed and nutrient concentrations are therefore not only linked to within-lake biogeochemical cycling but also to patterns and processes occurring upstream and in the surrounding landscape. Large variations in lake-landscape contexts in our dataset could thus explain the high range of observed nutrient data in lakes (Figure 1b) (Soranno et al., 2009). Indeed, lakes drain much larger catchments, sometimes perturbed by human activity, from which they receive OM and nutrients (Walter et al., 2020). On the other hand, nutrient concentrations vary less in peatland ponds and in thermokarst waterbodies presumably because of their

development in smaller, and likely more homogeneous landscapes, and with much lower freshwater volumes (Arsenault et al., 2019; Holden et al., 2018; Kokelj & Jorgenson, 2013) compared to lakes.

3.2. Distinguishing Freshwater Ecosystem Types

Peatland ponds and thermokarst waterbodies for which data were available had relatively narrower geographical contexts (Figure 1a) compared to lakes. It is unclear how the available data represent the true distribution of peatland ponds as we were unable to find datasets from tropical areas and large portions of temperate regions. By definition thermokarst waterbodies will naturally be found in cold climates with little human land use. Nonetheless, despite these major differences in geographic coverage, there were no clear differences between the biogeochemical properties of thermokarst waterbodies and lakes and peatland ponds, but appreciable distinction emerged between lakes and peatland ponds (Figure 2).

By aggregating the systems solely according to their biogeochemistry, the k-means clustering highlights the contrasting characteristics of peatland ponds, thermokarst waterbodies, and lakes (Table S2 in Supporting Information S1). It emphasizes how ecosystems a priori identified as lakes are scattered among four of the five clusters, with a wide range of biogeochemical properties, whereas ecosystems a priori identified as peatland ponds are mostly clustered in a fifth cluster (squares in Figure 2a). Ecosystems a priori classified as thermokarst waterbodies were mostly found among lake-like clusters, with 69% of the systems ($n = 74$) found in two clusters dominated largely by lakes ($n = 390$, 76% of lakes) rather than by peatland ponds ($n = 4$, 2% of peatland ponds). This shows the similarity of thermokarst waterbodies to lake biogeochemistry, meaning that they tend to have similar concentrations, but also combinations of DOC, TN, TP, and pH. The ordination of the k-means in a reduced space further supports the differences and similarities between the freshwater ecosystems (Figure 2a). The observed pattern also holds when comparing freshwater ecosystems of all area and depth: peatland ponds and lakes form distinct types of ecosystems, clearly differentiated by their pH, while thermokarst waterbodies have multiple combinations of physical and chemical characteristics (Figure 2c).

Overall, lakes and peatland ponds thus behave as two divergent freshwater ecosystems with very little overlap in terms of the combination of their morphometric and chemical properties (Figure 2). This apparent pattern is supported by a discriminant analysis model that correctly predicts 94.2% ($n = 340$) of lakes and 95.3% ($n = 142$) of peatland ponds but fails to correctly identify 66.6% ($n = 50$) of the thermokarst waterbodies (Table S4 in Supporting Information S1). In fact, most of the thermokarst waterbodies (65.3%; $n = 49$) were predicted as lakes. This suggests that systems that have been identified as thermokarst waterbodies may not represent a homogenous group with a distinct combination of biogeochemical properties, but rather behave either as a peatland pond, a lake, or as a combination of both (Figure 2). Although many lakes and ponds of the permafrost regions are considered thermokarst waterbodies because of the mechanisms leading to their formation, it is well known that these systems develop in a wide variety of matrices that influence their biogeochemistry (e.g., Elder et al., 2018; Sepulveda-Jauregui et al., 2015). This is supported by their bimodal distribution for pH, as well as the multiple shoulders in nutrients and DOC concentrations that align well with either lake or peatland pond distributions (Figure 1).

We suggest that the OM-rich setting in which peatland ponds develop represents the fundamental difference that positions typical lakes and peatland ponds at opposite ends of the biogeochemical gradients, and that the underlying matrix for thermokarst waterbodies determine whether they behave as a lake or a peatland pond. For example, many thermokarst waterbodies primarily form in OM-rich permafrost, showing increasing pH with developmental stages (Peura et al., 2020), but decreasing pH with latitude because of the reduced peat thickness in higher latitudes from which to receive acidic OM (Pokrovsky et al., 2014). Thermokarst waterbodies may also form in mineral-rich soils and yedoma and have neutral to alkaline pH (Calmels et al., 2008; Rautio et al., 2011; Sepulveda-Jauregui et al., 2015) (Figure 1b), leading to large spatial variations in chemical and biological characteristics of these freshwater ecosystems (Rautio et al., 2011; Vonk et al., 2015). Like thermokarst waterbodies, previous studies have reported waterbodies in peatlands with different levels of transparency and pH close to neutral (Quenta et al., 2016). These were however typically found over very shallow peat deposits (<40 cm) of mountainous regions and had inorganic bed material, contrary to most other peatland ponds, supporting the idea that within the broad categories defined here, there is an array of possible conditions controlling pond biogeochemistry that are ultimately linked to the surrounding matrix and developmental mechanisms.

3.3. The Distinct Biogeochemistry of Peatland Ponds: More Than Small Lakes

Both a priori and data-driven classifications showed that peatland ponds and thermokarst waterbodies were typically smaller and shallower than lakes (Figures 1b and 2). It is well known that larger lakes tend to have lower concentrations of elements because of higher retention times and smaller interfaces with C- and nutrient-rich sediments and soils (Downing, 2010; Holgerson & Raymond, 2016). If peatland ponds and thermokarst waterbodies behaved as small lakes, it could be possible to make global predictions for these systems based on widely available lake data. If, on the other hand, they display a distinct biogeochemistry, then knowledge and scaling relationships derived from lakes cannot be transposed to predict the role of peatland ponds and thermokarst waterbodies in global biogeochemical cycles.

Even when comparing only freshwater ecosystems of small extent (<0.1 km²), our results suggest that peatland ponds do not function simply as small lakes (Figure 2b, Table S3 in Supporting Information S1). The intermediate and more variable patterns for the population of thermokarst waterbodies (Figures 1 and 2) also hold even when considering size- or depth-specific patterns (Figure 3), likely because this category of aquatic ecosystems includes systems developing in both mineral- and OM-rich matrices. In particular, our results demonstrate that peatland ponds and thermokarst waterbodies are ecosystems that are more connected to their surroundings than

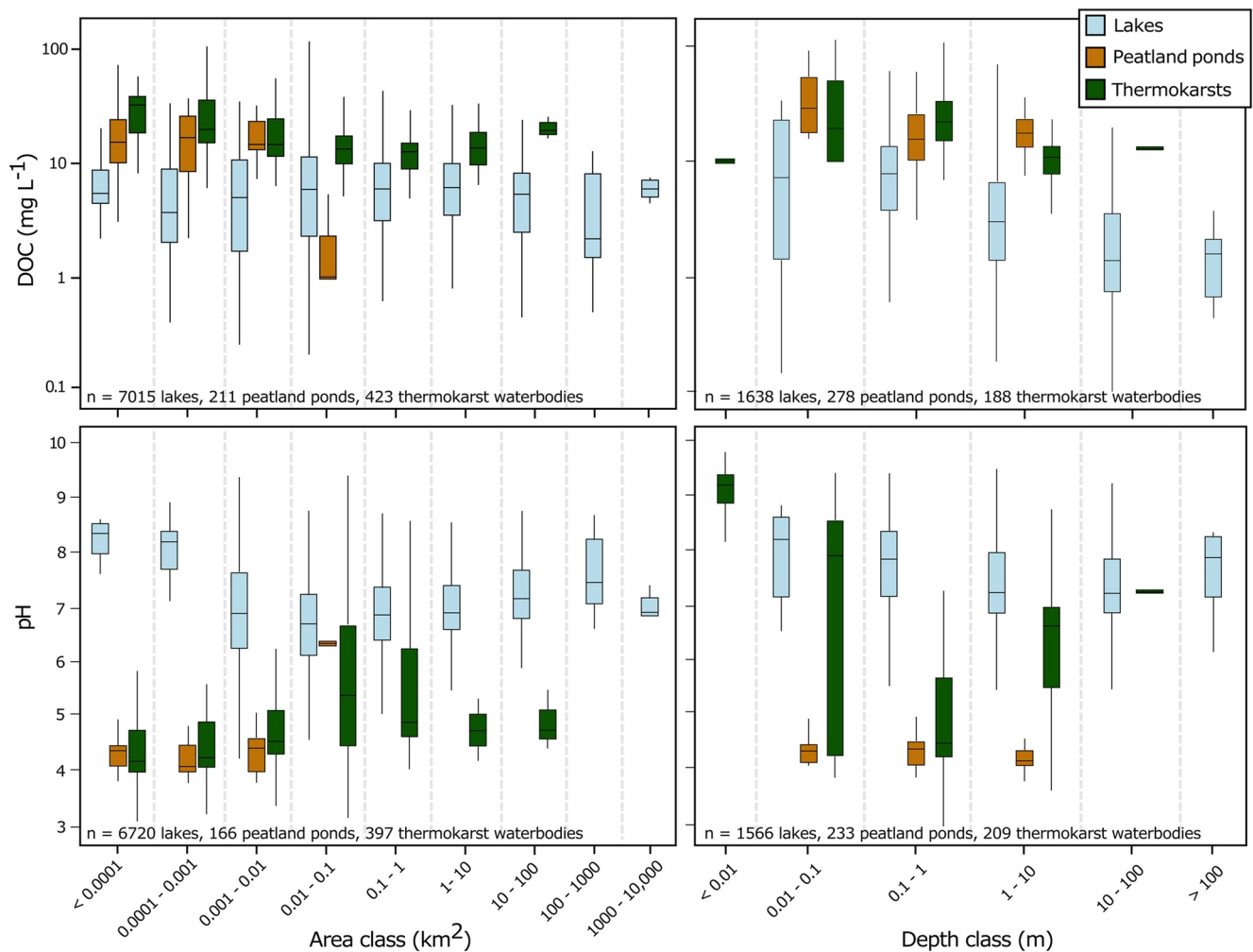


Figure 3. Distribution of dissolved organic carbon (DOC) concentration and pH in relation to area and depth for peatland ponds, thermokarst waterbodies, and lakes. Generalized linear models show that variations in DOC concentrations are only related to freshwater system type, and not to area or depth (GLM, $P > 0.1$; Table S4 in Supporting Information S1). Interactions between the type of system and area may, however, explain variations in pH between lakes, peatland ponds, and thermokarst waterbodies (GLM, $P < 0.05$; Table S4 in Supporting Information S1). Boxes show the median and the 25th and 75th percentiles of the distributions, and whiskers show the 10th and 90th percentiles.

lakes, with the DOC available for biological and photochemical reactions being on average more than twice higher than for lakes, as well as a pH that can be as much as four orders of magnitude more acid, especially for the smaller peatland ponds and thermokarst waterbodies (Figure 3). Moreover, TN and TP concentrations in peatland ponds (GLM; TN: $P = 0.381$, and TP: $P = 0.135$; Table S1 in Supporting Information S1) and thermokarst waterbodies (GLM; TN: $P = 0.206$, and TP: $P = 0.145$; Table S1 in Supporting Information S1) are comparable to those observed in lakes, although lakes drain much larger watersheds from which to receive nutrients (Arsenaault et al., 2019; Kokelj & Jorgenson, 2013; Walter et al., 2020). Then, if TN and TP concentrations in freshwater ecosystems were to be compared in terms of units of drained area, nutrient concentrations would be much higher in peatland ponds and thermokarst waterbodies than in lakes, highlighting the distinctiveness of such systems.

Globally, lentic ecosystems emit 1.25–2.3 Pg C yr⁻¹, most of which likely originates from small freshwater systems (DelSontro et al., 2018). Most estimates of greenhouse gas emissions from limnological systems are based on the size of the systems and their C content (Bastviken et al., 2011; DelSontro et al., 2018; Raymond et al., 2013), and little attention has been given to the distinctive nature of a large portion of the world's small freshwater systems apart from those located in the boreal-arctic region (e.g., Kuhn, Varner, et al., 2021; Matthews et al., 2020; Wik et al., 2016). Here, we have shown that peatland ponds and, to a lesser extent, thermokarst waterbodies, that account for a substantial proportion of small waterbodies worldwide, have distinct combinations of morphometric and chemical properties that are not observed in lakes. While lakes receive most of their OM and nutrients from their watersheds, peatland pond biogeochemistry is mostly influenced by internal cycling and exchanges with the surrounding peat (Figure 4) (Arsenaault et al., 2018, 2019). For thermokarst waterbodies developing in OM- or mineral-rich permafrost, the surrounding matrix influences their biogeochemistry but lateral exchanges are not as important as in peatland ponds because of the frozen soil that reduces permeability (Figure 4) (Vonk et al., 2019). However, with permafrost regions experiencing warming temperatures, the relative contribution of the surrounding thawing soils to thermokarst waterbody OM and nutrient loading is expected to increase in the future (Pokrovsky et al., 2013), perhaps making peatland ponds better models than lakes for predicting future evolution of these waterbodies.

Deepening our knowledge of the biogeochemistry of peatland ponds, especially in lower latitudes where data are particularly scarce, and of thermokarst waterbodies will improve prediction of the fate of climate-sensitive wetland and permafrost regions dominated by unique freshwater systems. Because of their distinct functional relationships with their surroundings, it is likely that peatland ponds and lakes will respond differently to climate forcing. Our results suggest that predictive relationships developed for lakes would not translate well to peatland

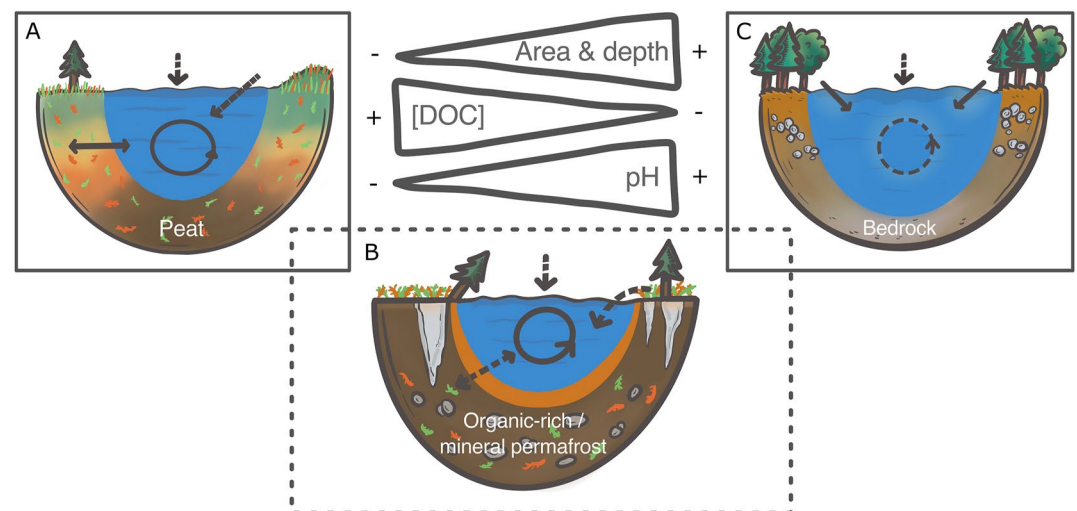


Figure 4. Relative contribution of landscape, internal cycling, and atmospheric inputs to organic matter (OM) and nutrient sources to (a) peatland pond, (b) thermokarst waterbody, and (c) lake biogeochemistry. Area, depth, and pH are lower and dissolved organic carbon (DOC) is higher in peatland ponds than in lakes, but thermokarst waterbodies show mixed biogeochemical patterns combining morphological and chemical characters of both lakes and peatland ponds, depending on the surrounding soil characteristics. We explain the distinct biogeochemistry of these freshwater systems by the different settings in which they develop, influencing the relative contribution of OM and nutrient sources.

ponds and most thermokarst waterbodies. This warrants the development of distinct scaling relationships for the integration of freshwater ecosystems in the next generation of land-surface components of earth system models. It also highlights the critical need for more data on peatland ponds and thermokarst waterbodies to feed such models.

Conflict of Interest

The authors declare no conflicts of interest relevant to this study.

Data Availability Statement

The data used in this study and the list of articles from which we built the dataset are available on Zenodo at <http://www.doi.org/10.5281/zenodo.5619484>. The list of references is also available in Supplementary information Text S1 and S2.

Acknowledgments

We thank Dr. Sebastian Sobek for his dataset and comments on an earlier version of the paper, and Dr. Estefania Quenta for the discussion on Andean peatland ponds. We thank Grisel Ramirez Novelo for drawing Figure 4. This work was supported by NSERC Discovery Grant to Julie Talbot and Jean-François Lapierre, and NSERC PhD fellowship to Julien Arsenault. Data collection from the peatland ponds in Scotland and Northern Ireland was funded by NERC grant NE/J007609/1 led by Joseph Holden, supported by Andy Baird, Pippa Chapman, Mike Billett, Kerry Dinsmore, Ed Turner, Rebecca McKenzie, and Roxane Andersen. Data collection for the English peatland ponds was funded by the Esme Fairburn Foundation, Grant 10-0774 led by Lee Brown, involving Joseph Holden, Sorain Ramchunder, and Jeannie Beadle. Lee Brown and Graeme Swindles acknowledge International Network for Terrestrial Research and Monitoring in the Arctic (INTERACT) funding under the European Union H2020 Transnational Access programme grant agreement no. 262693 for the PEATARC project in Abisko, Sweden.

References

- Abell, J. M., Özkundakci, D., Hamilton, D. P., & Jones, J. R. (2012). Latitudinal variation in nutrient stoichiometry and chlorophyll-nutrient relationships in lakes: A global study. *Fundamental and Applied Limnology*, 181(1), 1–14. <https://doi.org/10.1127/1863-9135/2012/0272>
- Arsenault, J., Talbot, J., & Moore, T. R. (2018). Environmental controls of C, N and P biogeochemistry in peatland pools. *The Science of the Total Environment*, 631–632, 714–722. <https://doi.org/10.1016/j.scitotenv.2018.03.064>
- Arsenault, J., Talbot, J., Moore, T. R., Beauvais, M.-P., Franssen, J., & Roulet, N. T. (2019). The spatial heterogeneity of vegetation, hydrology and water chemistry in a peatland with open-water pools. *Ecosystems*, 22, 1352–1367. <https://doi.org/10.1007/s10021-019-00342-4>
- Bastviken, D., Tranvik, L. J., Downing, J. A., Crill, P. M., & Enrich-Prast, A. (2011). Freshwater methane emissions offset the continental carbon sink. *Science*, 331, 50. <https://doi.org/10.1126/science.1196808>
- Belyea, L. R., & Lancaster, J. (2002). Inferring landscape dynamics of bog pools from scaling relationships and spatial patterns. *Journal of Ecology*, 90, 223–234. <https://doi.org/10.1046/j.1365-2745.2001.00647.x>
- Bouchard, F., Fortier, D., Paquette, M., Boucher, V., Pienitz, R., & Laurion, I. (2020). Thermokarst lake development in syngenetic ice-wedge polygon terrain in the Eastern Canadian Arctic (Bylot Island, Nunavut). *The Cryosphere*, 14, 2607–2627. <https://doi.org/10.5194/tc-14-2607-2020>
- Cael, B. B., Heathcote, A. J., & Seekell, D. A. (2017). The volume and mean depth of Earth's lakes. *Geophysical Research Letters*, 44(1), 209–218. <https://doi.org/10.1002/2016gl071378>
- Calmels, F., Allard, M., & Delisle, G. (2008). Development and decay of a lithalsa in northern Québec: A geomorphological history. *Geomorphology*, 97, 287–299. <https://doi.org/10.1016/j.geomorph.2007.08.013>
- Cory, R. M., & Kling, G. W. (2018). Interactions between sunlight and microorganisms influence dissolved organic matter degradation along the aquatic continuum. *Limnology and Oceanography Letters*, 3, 102–116. <https://doi.org/10.1002/lol2.10060>
- DelSontro, T., Beaulieu, J. J., & Downing, J. A. (2018). Greenhouse gas emissions from lakes and impoundments: Upscaling in the face of global change. *Limnology and Oceanography Letters*, 3, 64–75. <https://doi.org/10.1002/lol2.10073>
- Downing, J. A. (2010). Emerging global role of small lakes and ponds: Little things mean a lot. *Limnética*, 29, 9–24. <https://doi.org/10.23818/limn.29.02>
- Elder, C. D., Xu, X., Walker, J., Schnell, J. L., Hinkel, K. M., Townsend-Small, A., et al. (2018). Greenhouse gas emissions from diverse Arctic Alaskan lakes are dominated by young carbon. *Nature Climate Change*, 8, 166–171. <https://doi.org/10.1038/s41558-017-0066-9>
- Foster, D. R., & Fritz, S. C. (1987). Mire development, pool formation and landscape processes on patterned fens in Dalarna, Central Sweden. *Journal of Ecology*, 75, 409–437. <https://doi.org/10.2307/2260426>
- Foster, D. R., King, G. A., & Santelmann, M. V. (1988). Patterned fens of Western Labrador and adjacent Quebec: Phytosociology, water chemistry, landform features, and dynamics of surface patterns. *Canadian Journal of Botany*, 66, 2402–2418. <https://doi.org/10.1139/b88-327>
- Foster, D. R., Wright, H. E., Jr., Thelaus, M., & King, G. A. (1988). Bog development and landform dynamics in central Sweden and south-eastern Labrador, Canada. *Journal of Ecology*, 76, 1164. <https://doi.org/10.2307/2260641>
- Hamilton, J. D., Kelly, C. A., Rudd, J. W. M., Hesslein, H., & Roulet, N. T. (1994). Flux to the atmosphere of CH₄ and CO₂ from wetland ponds on the Hudson Bay lowlands (HBLs). *Journal of Geophysical Research*, 99, 1495–1510. <https://doi.org/10.1029/93jd03020>
- Heslop, J. K., Walter Anthony, K. M., Sepulveda-Jauregui, A., Martinez-Cruz, K., Bondurant, A., Grosse, G., & Jones, M. C. (2015). Thermokarst lake methanogenesis along a complete talik profile. *Biogeosciences*, 12, 4317–4331. <https://doi.org/10.5194/bg-12-4317-2015>
- Holden, J., Moody, C. S., Edward Turner, T., McKenzie, R., Baird, A. J., Billett, M. F., et al. (2018). Water-level dynamics in natural and artificial pools in blanket peatlands. *Hydrological Processes*, 32, 550–561. <https://doi.org/10.1002/hyp.11438>
- Holgerson, M. A., & Raymond, P. A. (2016). Large contribution to inland water CO₂ and CH₄ emissions from very small ponds. *Nature Geoscience*, 9, 222–226. <https://doi.org/10.1038/ngeo2654>
- Jones, S. E., Zwart, J. A., Kelly, P. T., & Solomon, C. T. (2018). Hydrologic setting constrains lake heterotrophy and terrestrial carbon fate. *Limnology and Oceanography Letters*, 3(3), 256–264. <https://doi.org/10.1002/lol2.10054>
- Karofeld, E., & Tõnisson, H. (2014). Spatio-temporal changes in bog pool bottom topography—Temperature effect and its influence on pool development: An example from a raised bog in Estonia. *Hydrological Processes*, 28, 958–968. <https://doi.org/10.1002/hyp.9624>
- Kokelj, S. V., & Jorgenson, M. T. (2013). Advances in thermokarst research. *Permafrost and Periglacial Processes*, 24, 108–119. <https://doi.org/10.1002/ppp.1779>
- Kortelainen, P., Rantakari, M., Huttunen, J. T., Mattsson, T., Alm, J., Juutinen, S., et al. (2006). Sediment respiration and lake trophic state are important predictors of large CO₂ evasion from small boreal lakes. *Global Change Biology*, 12, 1554–1567. <https://doi.org/10.1111/j.1365-2486.2006.01167.x>
- Kuhn, M. A., Thompson, L. M., Winder, J. C., Braga, L. P. P., Tanentzap, A. J., Bastviken, D., & Olefeldt, D. (2021). Opposing effects of climate and permafrost thaw on CH₄ and CO₂ emissions from northern lakes. *AGU Advances*, 2(1), 1–16. <https://doi.org/10.1029/2021AV000515>

- Kuhn, M. A., Varner, R. K., Bastviken, D., Crill, P., MacIntyre, S., Turetsky, M., et al. (2021). BAWLD-CH4: A comprehensive dataset of methane fluxes from boreal and arctic ecosystems. *Earth System Science Data*, *13*, 5151–5189. <https://doi.org/10.5194/essd-13-5151-2021>
- Laurion, I., Vincent, W. F., MacIntyre, S., Retamal, L., Dupont, C., Francus, P., & Pienitz, R. (2010). Variability in greenhouse gas emissions from permafrost thaw ponds. *Limnology & Oceanography*, *55*, 115–133. <https://doi.org/10.4319/lo.2010.55.1.0115>
- Maranger, R., Jones, S. E., & Cotner, J. B. (2018). Stoichiometry of carbon, nitrogen, and phosphorus through the freshwater pipe. *Limnology and Oceanography Letters*, *3*, 89–101. <https://doi.org/10.1002/lo2.10080>
- Matthews, E., Johnson, M. S., Genovese, V., Du, J., & Bastviken, D. (2020). Methane emission from high latitude lakes: Methane-centric lake classification and satellite-driven annual cycle of emissions. *Scientific Reports*, *10*(1), 1–9. <https://doi.org/10.1038/s41598-020-68246-1>
- McEnroe, N. A., Roulet, N. T., Moore, T. R., & Garneau, M. (2009). Do pool surface area and depth control CO₂ and CH₄ fluxes from an ombrotrophic raised bog, James Bay, Canada? *Journal of Geophysical Research*, *114*, G01001. <https://doi.org/10.1029/2007jg000639>
- Olefeldt, D., Goswami, S., Grosse, G., Hayes, D., Hugelius, G., Kuhry, P., et al. (2016). Circumpolar distribution and carbon storage of thermokarst landscapes. *Nature Communications*, *7*, 13043. <https://doi.org/10.1038/ncomms13043>
- Olefeldt, D., Hovenmyr, M., Kuhn, M. A., Bastviken, D., Bohn, T. J., Connolly, J., et al. (2021). The boreal-arctic wetland and lake dataset (BAWLD). *Earth System Science Data*, *13*(11), 5127–5149. <https://doi.org/10.5194/essd-13-5127-2021>
- Payette, S., Delwaide, A., Caccianiga, M., & Beauchemin, M. (2004). Accelerated thawing of subarctic peatland permafrost over the last 50 years. *Geophysical Research Letters*, *31*, L18208. <https://doi.org/10.1029/2004gl020358>
- Pelletier, L., Strachan, I. B., Garneau, M., & Roulet, N. T. (2014). Carbon release from boreal peatland open water pools: Implication for the contemporary C exchange. *Journal of Geophysical Research: Biogeosciences*, *119*, 207–222. <https://doi.org/10.1002/2013jg002423>
- Peura, S., Wauthy, M., Simone, D., Eiler, A., Einarsdóttir, K., Rautio, M., & Bertilsson, S. (2020). Ontogenic succession of thermokarst thaw ponds is linked to dissolved organic matter quality and microbial degradation potential. *Limnology & Oceanography*, *65*, S248–S263. <https://doi.org/10.1002/lno.11349>
- Pokrovsky, O. S., Shirokova, L. S., Kirpotin, S. N., Kulizhsky, S. P., & Vorobiev, S. N. (2013). Impact of Western Siberia heat wave 2012 on greenhouse gases and trace metal concentration in thaw lakes of discontinuous permafrost zone. *Biogeosciences*, *10*, 5349–5365. <https://doi.org/10.5194/bg-10-5349-2013>
- Pokrovsky, O. S., Shirokova, L. S., Manasypov, R. M., Kirpotin, S. N., Kulizhsky, S. P., Kolesnichenko, L. G., et al. (2014). Thermokarst lakes of Western Siberia: A complex biogeochemical multidisciplinary approach. *International Journal of Environmental Studies*, *71*, 733–748. <https://doi.org/10.1080/00207233.2014.942535>
- Quenta, E., Molina-Rodriguez, J., Gonzales, K., Rebaudo, F., Casas, J., Jacobsen, D., & Dangles, O. (2016). Direct and indirect effects of glaciers on aquatic biodiversity in high Andean peatlands. *Global Change Biology*, *22*(9), 3196–3205. <https://doi.org/10.1111/gcb.13310>
- Rautio, M., Dufresne, F., Laurion, I., Bonilla, S., Vincent, W. F., & Christoffersen, K. S. (2011). Shallow freshwater ecosystems of the circumpolar Arctic. *Écoscience*, *18*, 204–222. <https://doi.org/10.2980/18-3-3463>
- Raymond, P. A., Hartmann, J., Lauerwald, R., Sobek, S., McDonald, C., Hoover, M., et al. (2013). Global carbon dioxide emissions from inland waters. *Nature*, *503*(7476), 355–359. <https://doi.org/10.1038/nature12760>
- Riordan, B., Verbyla, D., & McGuire, A. D. (2006). Shrinking ponds in subarctic Alaska based on 1950–2002 remotely sensed images. *Journal of Geophysical Research*, *111*, G04002. <https://doi.org/10.1029/2005jg000150>
- Rosentreter, J. A., Borges, A. V., Deemer, B. R., Holgerson, M. A., Liu, S., Song, C., et al. (2021). Half of global methane emissions come from highly variable aquatic ecosystem sources. *Nature Geoscience*, *14*, 225–230. <https://doi.org/10.1038/s41561-021-00715-2>
- Sepulveda-Jauregui, A., Walter Anthony, K. M., Martinez-Cruz, K., Greene, S., & Thalasso, F. (2015). Methane and carbon dioxide emissions from 40 lakes along a north-south latitudinal transect in Alaska. *Biogeosciences*, *12*, 3197–3223. <https://doi.org/10.5194/bg-12-3197-2015>
- Serikova, S., Pokrovsky, O. S., Laudon, H., Krickov, I. V., Lim, A. G., Manasypov, R. M., & Karlsson, J. (2019). High carbon emissions from thermokarst lakes of Western Siberia. *Nature Communications*, *10*, 1552. <https://doi.org/10.1038/s41467-019-09592-1>
- Sobek, S., Tranvik, L. J., Prairie, Y. T., Kortelainen, P., & Cole, J. J. (2010). Patterns and regulation of dissolved organic carbon: An analysis of 7,500 widely distributed lakes. *Limnology & Oceanography*, *52*, 1208–1219. <https://doi.org/10.4319/lo.2007.52.3.1208>
- Soranno, P. A., Webster, K. E., Cheruvilil, K. S., & Bremigan, M. T. (2009). The lake landscape-context framework: Linking aquatic connections, terrestrial features and human effects at multiple spatial scales. *Verhan International Verein Limnology*, *30*, 695–700. <https://doi.org/10.1080/03680770.2009.11902218>
- Stanley, E. H., Collins, S. M., Lottig, N. R., Oliver, S. K., Webster, K. E., Cheruvilil, K. S., & Soranno, P. A. (2019). Biases in lake water quality sampling and implications for macroscale research. *Limnology & Oceanography*, *64*(4), 1572–1585. <https://doi.org/10.1002/lno.11136>
- Stolpmann, L., Coch, C., Morgenstern, A., Boike, J., Fritz, M., Herzschuh, U., et al. (2021). First pan-Arctic assessment of dissolved organic carbon in lakes of the permafrost region. *Biogeosciences*, *18*(12), 3917–3936. <https://doi.org/10.5194/bg-18-3917-2021>
- Verpoorter, C., Kutser, T., Seekell, D. A., & Tranvik, L. J. (2014). A global inventory of lakes based on high-resolution satellite imagery. *Geophysical Research Letters*, *41*, 6396–6402. <https://doi.org/10.1002/2014gl060641>
- Vonk, J. E., Tank, S. E., Bowden, W. B., Laurion, I., Vincent, W. F., Alekseychik, P., et al. (2015). Reviews and syntheses: Effects of permafrost thaw on Arctic aquatic ecosystems. *Biogeosciences*, *12*, 7129–7167. <https://doi.org/10.5194/bg-12-7129-2015>
- Vonk, J. E., Tank, S. E., & Walvoord, M. A. (2019). Integrating hydrology and biogeochemistry across frozen landscapes. *Nature Communications*, *10*(1), 3–6. <https://doi.org/10.1038/s41467-019-13361-5>
- Walter, J. A., Fleck, R., Pace, M. L., & Wilkinson, G. M. (2020). Scaling relationships between lake surface area and catchment area. *Aquatic Sciences*, *82*, 47. <https://doi.org/10.1007/s00027-020-00726-y>
- Walter Anthony, K., Schneider von Deimling, T., Nitze, I., Frolking, S., Emond, A., Daanen, R., et al. (2018). 21st-Century modeled permafrost carbon emissions accelerated by abrupt thaw beneath lakes. *Nature Communications*, *9*. <https://doi.org/10.1038/s41467-018-05738-9>
- Wauthy, M., Rautio, M., Christoffersen, K. S., Forsström, L., Laurion, I., Mariash, H. L., et al. (2018). Increasing dominance of terrigenous organic matter in circumpolar freshwaters due to permafrost thaw. *Limnology and Oceanography Letters*, *3*, 186–198. <https://doi.org/10.1002/lo2.10063>
- Wetzel, R. G. (2001). *Limnology: Lake and river ecosystems* (3rd ed.). Academic Press.
- Wik, M., Varner, R. K., Anthony, K. W., MacIntyre, S., & Bastviken, D. (2016). Climate-sensitive northern lakes and ponds are critical components of methane release. *Nature Geoscience*, *9*, 99–105. <https://doi.org/10.1038/ngeo2578>
- Zwart, J. A., Hanson, Z. J., Vanderwall, J., Bolster, D., Hamlet, A., & Jones, S. E. (2018). Spatially explicit, regional-scale simulation of lake carbon fluxes. *Global Biogeochemical Cycles*, *32*(9), 1276–1293. <https://doi.org/10.1002/2017GB005843>

References From the Supporting Information

- Abnizova, A., Siemens, J., Langer, M., & Boike, J. (2012). Small ponds with major impact: The relevance of ponds and lakes in permafrost landscapes to carbon dioxide emissions. *Global Biogeochemical Cycles*, *26*, 1–9.
- Antoniades, D., Douglas, M. S. V., & Smol, J. R. (2003). Comparative physical and chemical limnology of two Canadian high Arctic regions: Alert (Ellesmere Island, NU) and Mould Bay (Prince Patrick Island, NWT). *Archiv für Hydrobiologie*, *158*, 485–516.
- Arts, M. T., Robarts, R. D., Kasai, F., Waiser, M. J., Tumber, V. P., Plante, A. J., et al. (2000). The attenuation of ultraviolet radiation in high dissolved organic carbon waters of wetlands and lakes on the northern Great Plains. *Limnology & Oceanography*, *45*, 292–299.
- Bartlett, K. B., Crill, P. M., Sass, R. L., Harriss, R. C., & Dise, N. B. (1992). Methane emissions from tundra environments in the Yukon-Kuskokwim Delta, Alaska. *Journal of Geophysical Research*, *97*, 16645–16660.
- Bégin, P. N., & Vincent, W. F. (2017). Permafrost thaw lakes and ponds as habitats for abundant rotifer populations. *Arctic Science*, *3*, 354–377.
- Blodau, C., Rees, R., Flessa, H., Rodionov, A., Guggenberger, G., Knorr, K. H., et al. (2008). A snapshot of CO₂ and CH₄ evolution in a thermokarst pond near Igarka, northern Siberia. *Journal of Geophysical Research*, *113*, 1–8.
- Bouchard, F., Laurion, I., Preskienis, V., Fortier, D., Xu, X., & Whiticar, M. J. (2015). Modern to millennium-old greenhouse gases emitted from ponds and lakes of the Eastern Canadian Arctic (Bylot Island, Nunavut). *Biogeosciences*, *12*, 7279–7298.
- Brown, L. E., Ramchunder, S. J., Beadle, J. M., & Holden, J. (2016). Macroinvertebrate community assembly in pools created during peatland restoration. *The Science of the Total Environment*, *569–570*, 361–372.
- Bubier, J. L., Moore, T. R., & Roulet, N. T. (1993). Methane emissions from wetlands on the midboreal region of northern Ontario, Canada. *Ecology*, *74*, 2240–2254.
- Burke, S. A., Wik, M., Lang, A., Contosta, A. R., Palace, M., Crill, P. M., & Varner, R. K. (2019). Long-term measurements of methane ebullition from thaw ponds. *Journal of Geophysical Research: Biogeosciences*, *124*, 2208–2221.
- Carignan, R., Planas, D., & Vis, C. (2000). Planktonic production and respiration in oligotrophic shield lakes. *Limnology & Oceanography*, *45*, 189–199.
- Coulombe, O., Bouchard, F., & Pienitz, R. (2016). Coupling of sedimentological and limnological dynamics in subarctic thermokarst ponds in Northern Québec (Canada) on an interannual basis. *Sedimentary Geology*, *340*, 15–24.
- Curtis, P. J., & Adams, H. E. (1995). Dissolved organic matter quantity and quality from freshwater and saltwater lakes in east-central Alberta. *Biogeochemistry*, *30*, 59–76.
- D'Arcy, P., & Carignan, R. (1997). Influence of catchment topography on water chemistry in southeastern Québec Shield lakes. *Canadian Journal of Fisheries and Aquatic Sciences*, *54*, 2215–2227.
- Dean, J. F., Meisel, O. H., Martyn Rosco, M., Marchesini, L. B., Garnett, M. H., Lenderink, H., et al. (2020). East Siberian Arctic inland waters emit mostly contemporary carbon. *Nature Communications*, *11*, 1–10.
- del Giorgio, P. A., Cole, J. J., Caraco, N. F., & Peters, R. H. (1999). Linking planktonic biomass and metabolism to net gas fluxes in northern temperate lakes. *Ecology*, *80*, 1422.
- Denfeld, B. A., Baulch, H. M., del Giorgio, P. A., Hampton, S. E., & Karlsson, J. (2018). A synthesis of carbon dioxide and methane dynamics during the ice-covered period of northern lakes. *Limnology and Oceanography Letters*, *3*, 117–131.
- Desyatkin, A. R., Takakai, F., Fedorov, P. P., Nikolaeva, M. C., Desyatkin, R. V., & Hatano, R. (2009). CH₄ emission from different stages of thermokarst formation in Central Yakutia, East Siberia. *Soil Science & Plant Nutrition*, *55*, 558–570.
- Dillon, P. J., & Molot, L. A. (1997). Dissolved organic and inorganic carbon mass balances in central Ontario lakes. *Biogeochemistry*, *36*, 29–42.
- Dove, A., Roulet, N., Crill, P., Chanton, J., & Bourbonniere, R. (1999). Methane dynamics of a northern Boreal beaver pond. *Écoscience*, *6*, 577–586.
- Duff, K. E., Laing, T. E., Smol, J. P., & Lean, D. R. S. (1998). Limnological characteristics of lakes located across arctic treeline in northern Russia. *Hydrobiologia*, *391*, 205–222.
- Dunn, P. K., & Smyth, G. K. (2018). *Generalized linear models with examples in R* (3rd ed.). Springer.
- EEA. (2019). *Waterbase – Water quality*. European Environment Agency, European Centre on Inland Coastal and Marine Waters.
- Ellis-Evans, J. C., Galchenko, V., Laybourn-Parry, J., Mylnikov, A. P., & Petz, W. (2001). Environmental characteristics and microbial plankton activity of freshwater environments at Kongsfjorden, Spitsbergen (Svalbard). *Archiv Für Hydrobiologie*, *152*, 609–632.
- Ingram, M., Walter Anthony, K. M., Sachs, T., Kohnert, K., Serafimovich, A., Grosse, G., & Meyer, F. J. (2020). Remote sensing northern lake methane ebullition. *Nature Climate Change*, *10*, 511–517.
- Environmental Protection Agency. (1984a). *Eastern lake survey*. Retrieved from <https://archive.epa.gov/emap/archive-emap/web/html/els.html>
- Environmental Protection Agency. (1984b). *Western lake survey*. Retrieved from <https://archive.epa.gov/emap/archive-emap/web/html/wls.html>
- Erkkilä, K. M., Ojala, A., Bastviken, D., Biermann, T., Heiskanen, J., Lindroth, A., et al. (2018). Methane and carbon dioxide fluxes over a lake: Comparison between eddy covariance, floating chambers and boundary layer method. *Biogeosciences*, *15*, 429–445.
- European Environment Agency. (1949–2004). *Waterbase - Lakes*. European Environment Agency. Retrieved from <http://dataservice.eea.europa.eu/dataservice/>
- Fan, S. M., Wofsy, S. C., Bakwin, P. S., Jacob, D. J., Anderson, S. M., Keibian, P. L., et al. (1992). Micrometeorological measurements of CH₄ and CO₂ exchange between the atmosphere and subarctic tundra. *Journal of Geophysical Research*, *97*, 16627–16643.
- Ford, T. E., & Naiman, R. J. (1988). Alteration of carbon cycling by beaver: Methane evasion rates from boreal forest streams and rivers. *Canadian Journal of Zoology*, *66*, 529–533.
- Foster, D. R., & Wright, H. E., Jr. (1990). Role of ecosystem development and climate change in bog formation in Central Sweden. *Ecology*, *71*, 450–463.
- Gal'chenko, V. F., Dulov, L. E., Cramer, B., Konova, N. I., & Barysheva, S. V. (2001). Biogeochemical processes of methane cycle in the soils, bogs, and lakes of Western Siberia. *Microbiology*, *70*, 175–185.
- Golubyatnikov, L. L., & Kazantsev, V. S. (2013). Contribution of tundra lakes in Western Siberia to the atmospheric methane budget. *Izvestiya - Atmospheric and Ocean Physics*, *49*, 395–403.
- Gorniak, A., Jekatiernyczuk, E., & Dobrzyn, P. (1999). Hydrochemistry of three dystrophic lakes in northeastern Poland. *Acta Hydrochimica et Hydrobiologica*, *27*, 12–18.
- Hamilton, P. B., Gajewski, K., Atkinson, D. E., & Lean, D. R. S. (2001). Physical and chemical limnology of 204 lakes from the Canadian Arctic Archipelago. *Hydrobiologia*, *457*, 133–148.
- Hope, D., Kratz, T. K., & Riera, J. L. (1996). Relationship between and dissolved organic carbon in northern Wisconsin lakes. *Journal of Environmental Quality*, *25*, 1442–1445.
- Huttunen, J. T., Alm, J., Liikanen, A., Juutinen, S., Larmola, T., Hammar, T., et al. (2003). Fluxes of methane, carbon dioxide and nitrous oxide in boreal lakes and potential anthropogenic effects on the aquatic greenhouse gas emissions. *Chemosphere*, *52*, 609–621.

- Huttunen, J. T., Hammar, T., Manninen, P., Servomaa, K., & Martikainen, P. J. (2004). Potential springtime greenhouse gas emissions from a small southern boreal lake (Keihäsjärvi, Finland). *Boreal Environment Research*, *9*, 421–427.
- Huttunen, J. T., Lappalainen, K. M., Saarijärvi, E., Väisänen, T., & Martikainen, P. J. (2001). A novel sediment gas sampler and a subsurface gas collector used for measurement of the ebullition of methane and carbon dioxide from a eutrophied lake. *The Science of the Total Environment*, *266*, 153–158.
- Huttunen, J. T., Väisänen, T. S., Heikkinen, M., Hellsten, S., Nykänen, H., Nenonen, O., & Martikainen, P. J. (2002). Exchange of CO₂, CH₄ and N₂O between the atmosphere and two northern boreal ponds with catchments dominated by peatlands or forests. *Plant and Soil*, *242*, 137–146.
- Jansen, J., Thornton, B. F., Cortés, A., Snöäl, J., Wik, M., MacIntyre, S., & Crill, P. M. (2020). Drivers of diffusive CH₄ emissions from shallow subarctic lakes on daily to multi-year timescales. *Biogeosciences*, *17*, 1911–1932.
- Jansen, J., Thornton, B. F., Jammet, M. M., Wik, M., Cortés, A., Friborg, T., et al. (2019). Climate-sensitive controls on large spring emissions of CH₄ and CO₂ from northern lakes. *Journal of Geophysical Research: Biogeosciences*, *124*, 2379–2399.
- Jones, R. I., Laybourn-Parry, J., Walton, M. C., & Young, J. M. (1997). The forms and distribution of carbon in a deep, oligotrophic lake (Loch Ness, Scotland). *Verhan International Verein Limnology*, *26*, 330–334.
- Jonsson, A., Karlsson, J., & Jansson, M. (2003). Sources of carbon dioxide supersaturation in clearwater and humic lakes in northern Sweden. *Ecosystems*, *6*, 224–235.
- Karlsson, J., Giesler, R., Persson, J., & Lundin, E. (2013). High emission of carbon dioxide and methane during ice thaw in high latitude lakes. *Geophysical Research Letters*, *40*, 1123–1127.
- Kelly, C. A., Fee, E., Ramlal, P. S., Rudd, J. W. M., Hesslein, R. H., Anema, C., & Schindler, E. U. (2001). Natural variability of carbon dioxide and net epilimnetic production in the surface waters of boreal lakes of different sizes. *Limnology & Oceanography*, *46*, 1054–1064.
- Kling, G. W., Kipphut, G. W., & Miller, M. C. (1992). The flux of CO₂ and CH₄ from lakes and rivers in arctic Alaska. *Hydrobiologia*, *240*, 23–36.
- Kling, G. W., O'Brien, W. J., Miller, M. C., & Hershey, A. E. (1992). The biogeochemistry and zoogeography of lakes and rivers in arctic Alaska. *Hydrobiologia*, *240*(1–3), 1–14. <https://doi.org/10.1007/BF00013447>
- Kling, G. W., Kipphut, G. W., Miller, M. M., & O'Brien, W. J. (2000). Integration of lakes and streams in a landscape perspective: The importance of material processing on spatial patterns and temporal coherence. *Freshwater Biology*, *43*, 477–497.
- Kokelj, S. V., Jenkins, R. E., Milburn, D., Burn, C. R., & Snow, N. (2005). The influence of thermokarst disturbance on the water quality of small upland lakes, Mackenzie Delta region, Northwest Territories, Canada. *Permafrost and Periglacial Processes*, *16*, 343–353.
- Kuhn, M. A., Lundin, E. J., Giesler, R., Johansson, M., & Karlsson, J. (2018). Emissions from thaw ponds largely offset the carbon sink of northern permafrost wetlands. *Scientific Reports*, *8*, 9535.
- Laurion, I., Ventura, M., Catalan, J., Psenner, R., & Sommaruga, R. (2000). Attenuation of ultraviolet radiation in mountain lakes: Factors controlling the among- and within-lake variability. *Limnology & Oceanography*, *45*, 1274–1288.
- Legendre, P., & Legendre, L. (2012). *Numerical ecology* (3rd ed.). Elsevier.
- Lim, D. S. S., Douglas, M. S. V., & Smol, J. P. (2005). Limnology of 46 lakes and ponds on Banks Island, N.W.T., Canadian Arctic Archipelago. *Hydrobiologia*, *545*, 11–32.
- Lim, D. S. S., Douglas, M. S. V., Smol, J. P., & Lean, D. R. S. (2001). Physical and chemical limnological characteristics of 38 lakes and ponds on Bathurst Island, Nunavut, Canadian High Arctic. *International Review of Hydrobiology*, *86*, 1–22.
- Loiko, S. V., Pokrovsky, O. S., Raudina, T. V., Lim, A., Kolesnichenko, L. G., Shirokova, L. S., et al. (2017). Abrupt permafrost collapse enhances organic carbon, CO₂, nutrient and metal release into surface waters. *Chemical Geology*, *471*, 153–165.
- Manasypov, R. M., Pokrovsky, O. S., Kirpotin, S. N., & Shirokova, L. S. (2014). Thermokarst lake waters across the permafrost zones of Western Siberia. *The Cryosphere*, *8*, 1177–1193.
- Manasypov, R. M., Vorobyev, S. N., Loiko, S. V., Kritzkov, I. V., Shirokova, L. S., Shevchenko, V. P., et al. (2015). Seasonal dynamics of organic carbon and metals in thermokarst lakes from the discontinuous permafrost zone of Western Siberia. *Biogeosciences*, *12*, 3009–3028.
- Mantzouki, E., Campbell, J., Loon, E. V., Visser, P., Konstantinou, I., Antoniou, M., et al. (2018). A European Multi Lake Survey dataset of environmental variables, phytoplankton pigments and cyanotoxins. *Scientific Data*, *5*, 1–13.
- Mataloni, G., González Garraza, G., & Vinocur, A. (2015). Landscape-driven environmental variability largely determines abiotic characteristics and phytoplankton patterns in peat bog pools (Tierra del Fuego, Argentina). *Hydrobiologia*, *751*, 105–125.
- McKnight, D. M., Harnish, R., Wershaw, R. L., Baron, J. S., & Schiff, S. L. (1997). Chemical characteristics of particulate, colloidal and dissolved organic material in Loch Valle Watershed, Rocky Mountain National Park. *Biogeochemistry*, *36*, 99–124.
- Michelutti, N., Douglas, M. S. V., Lean, D. R. S., & Smol, J. P. (2002). Physical and chemical limnology of 34 ultra-oligotrophic lakes and ponds near Wynniatt Bay, Victoria Island, Arctic Canada. *Hydrobiologia*, *482*, 1–13.
- Michelutti, N., Douglas, M. S. V., Muir, D. C. G., Wang, X., & Smol, J. P. (2002). Limnological characteristics of 38 lakes and ponds on Axel Heiberg Island, High Arctic Canada. *International Review of Hydrobiology*, *87*, 385–399.
- Molot, L. A., Keller, W., Leavitt, P. R., Robarts, R. D., Waiser, M. J., Arts, M. T., et al. (2004). Risk analysis of dissolved organic matter-mediated ultraviolet B exposure in Canadian inland waters. *Canadian Journal of Fisheries and Aquatic Sciences*, *61*, 2511–2521.
- Mu, C., Zhang, T., Wu, Q., Peng, X., Zhang, P., Yang, Y., et al. (2016). Dissolved organic carbon, CO₂, and CH₄ concentrations and their stable isotope ratios in thermokarst lakes on the Qinghai-Tibetan Plateau. *Journal of Limnology*, *75*, 313–319.
- Nakayama, T., Fukuda, M., Sone, T., & Nagaoka, D. (1993). Measurement of methane flux in a tundra region near Tiksi, Eastern Siberia in 1992. *Low Temperature Science, Series A*, *52*, 63–70.
- Ojala, A., Bellido, J. L., Tulonen, T., Kankaala, P., & Huotari, J. (2011). Carbon gas fluxes from a brown-water and a clear-water lake in the boreal zone during a summer with extreme rain events. *Limnology & Oceanography*, *56*, 61–76.
- PHELPS, A. R., PETERSON, K. M., & JEFFRIES, O. (1998). Methane efflux from high-latitude lakes during spring ice melt. *Journal of Geophysical Research*, *103*(D22), 29029–29036. <https://doi.org/10.1029/98JD00044>
- Pienitz, R., Smol, J. P., & Lean, D. R. S. (1997a). Physical and chemical limnology of 24 lakes located between Yellowknife and Contwoyto Lake, Northwest Territories (Canada). *Canadian Journal of Fisheries and Aquatic Sciences*, *54*, 347–358.
- Pienitz, R., Smol, J. P., & Lean, D. R. S. (1997b). Physical and chemical limnology of 59 lakes located between the southern Yukon and the Tuktoyaktuk Peninsula, Northwest Territories (Canada). *Canadian Journal of Fisheries and Aquatic Sciences*, *54*, 330–346.
- Podgajsek, E., Sahlée, E., Bastviken, D., Natchimuthu, S., Kljun, N., Chmiel, H. E., et al. (2016). Methane fluxes from a small boreal lake measured with the eddy covariance method. *Limnology & Oceanography*, *61*, S41–S50.
- Polishchuk, Y. M., Bogdanov, A. N., Muratov, I. N., Polishchuk, V. Y., Lim, A., Manasypov, R. M., et al. (2018). Minor contribution of small thaw ponds to the pools of carbon and methane in the inland waters of the permafrost-affected part of the Western Siberian Lowland. *Environmental Research Letters*, *13*, 045002.
- Rae, R., Howard-Williams, C., Hawes, I., Schwarz, A. M., & Vincent, W. F. (2001). Penetration of solar ultraviolet radiation into New Zealand lakes: Influence of dissolved organic carbon and catchment vegetation. *Limnology*, *2*, 79–89.

- Rai, H., & Hill, G. (1981). Physical and chemical studies of Lago Tupé; a central Amazonian black water "Ria lake". *Internationale Revue der Gesamten Hydrobiologie*, 66, 37–82.
- Rantakari, M., Kortelainen, P., Vuorenmaa, J., Mannio, J., & Forsius, M. (2004). Finnish lake survey: The role of catchment attributes in determining nitrogen, phosphorus, and organic carbon concentrations. *Water, Air, and Soil Pollution: Focus*, 4, 683–699.
- R Core Team. (2020). *R: A language and environment for statistical computing*. R Foundation for Statistical Computing. Retrieved from <https://www.r-project.org/>
- Repo, M. E., Huttunen, J. T., Naumov, A. V., Chichulin, A. V., Lapshina, E. D., Bleuten, W., & Martikainen, P. J. (2007). Release of CO₂ and CH₄ from small wetland lakes in Western Siberia. *Tellus B: Chemical and Physical Meteorology*, 59, 788–796.
- Rühland, K. M., Smol, J. P., Wang, X., & Muir, D. C. G. (2003). Limnological characteristics of 56 lakes in the central Canadian arctic treeline region. *Journal of Limnology*, 62, 9–27.
- Sabbe, K., Hodgson, D. A., Verleyen, E., Taton, A., Wilmotte, A., Vanhoutte, K., & Vyverman, W. (2004). Salinity, depth and the structure and composition of microbial mats in continental Antarctic lakes. *Freshwater Biology*, 49(3), 296–319.
- Sabrekov, A. F., Runkle, B. R. K., Glagolev, M. V., Terentieva, I. E., Stepanenko, V. M., Kotsyurbenko, O. R., et al. (2017). Variability in methane emissions from West Siberia's shallow boreal lakes on a regional scale and its environmental controls. *Biogeosciences*, 14, 3715–3742.
- Scully, N. M., McQueen, D. J., & Lean, D. R. S. (1996). Hydrogen peroxide formation: The interaction of ultraviolet radiation and dissolved organic carbon in lake waters along a 43–75°N gradient. *Limnology & Oceanography*, 41, 540–548.
- Sobek, S., Algesten, G., Bergström, A. K., Jansson, M., & Tranvik, L. J. (2003). The catchment and climate regulation of pCO₂ in boreal lakes. *Global Change Biology*, 9, 630–641.
- Sturtevant, C. S., & Oechel, W. C. (2013). Spatial variation in landscape-level CO₂ and CH₄ fluxes from arctic coastal tundra: Influence from vegetation, wetness, and the thaw lake cycle. *Global Change Biology*, 19, 2853–2866.
- Swedish National Lake Monitoring. (2000). *Riksinventering 2000, vattenkemi i sjöar. Institutionen för miljöanalys*. Department of Environmental Assessment, Swedish University of Agricultural Sciences. Retrieved from [http://info1.ma.slu.se/ri/www_ri_acgi\\$Project?ID52000KS](http://info1.ma.slu.se/ri/www_ri_acgi$Project?ID52000KS)
- Takakai, F., Desyatkin, A. R., Lopez, C. M. L., Fedorov, A. N., Desyatkin, R. V., & Hatano, R. (2008). CH₄ and N₂O emissions from a forest-alas ecosystem in the permafrost taiga forest region, eastern Siberia, Russia. *Journal of Geophysical Research*, 113, 1–16.
- Thompson, H. A., White, J. R., Pratt, L. M., & Sauer, P. E. (2016). Spatial variation in flux, δ¹³C and δ²H of methane in a small Arctic lake with fringing wetland in Western Greenland. *Biogeochemistry*, 131, 17–33.
- Tipping, E., Benham, S., Boyle, J. F., Crow, P., Davies, J., Fischer, U., et al. (2014). Atmospheric deposition of phosphorus to land and freshwater. *Environmental Sciences: Processes & Impacts*, 16(7), 1608–1617. <https://doi.org/10.1039/C3EM00641G>
- Townsend-Small, A., Åkerström, F., Arp, C. D., & Hinkel, K. M. (2017). Spatial and temporal variation in methane concentrations, fluxes, and sources in lakes in arctic Alaska. *Journal of Geophysical Research: Biogeosciences*, 122, 2966–2981.
- Turner, T. E., Billett, M. F., Baird, A. J., Chapman, P. J., Dinsmore, K. J., & Holden, J. (2016). Regional variation in the biogeochemical and physical characteristics of natural peatland pools. *The Science of the Total Environment*, 545–546, 84–94.
- UNEP. (2017). *GEMStat database of the Global Environment Monitoring system for freshwater*. (GEMS/Water) Programme.
- Wahl, P., & Kronmal, R. A. (1977). Discriminant functions when covariances are unequal and sample sizes are moderate. *Biometrics*, 33, 479–484.
- Walter Anthony, K. M., & Anthony, P. (2013). Constraining spatial variability of methane ebullition seeps in thermokarst lakes using point process models. *Journal of Geophysical Research: Biogeosciences*, 118, 1015–1034.
- Walter Anthony, K. M., Vas, D. A., Brosius, L., Stuart Chapin, I., Zimov, S. A., & Zhuang, Q. (2010). Estimating methane emissions from northern lakes using icebubble surveys. *Limnology and Oceanography: Methods*, 8(November), 592–609.
- Wauthy, M., Rautio, M., Christoffersen, K. S., Forsström, L., Laurion, I., Mariash, H., et al. (2017). Dissolved organic carbon and related environmental data from ponds and lakes in the circumpolar North, v. 1.0 (2002–2016). *Nordicana D*, 31. <https://doi.org/10.5885/45520CE-0A48ADE0E2194290>
- Wik, M., Crill, P. M., Varner, R. K., & Bastviken, D. (2013). Multiyear measurements of ebullitive methane flux from three subarctic lakes. *Journal of Geophysical Research: Biogeosciences*, 118, 1307–1321.