



Deposited via The University of Sheffield.

White Rose Research Online URL for this paper:

<https://eprints.whiterose.ac.uk/id/eprint/183974/>

Version: Published Version

Article:

Wardley, J., Swift, A., Ryding, A. et al. (2021) Four-dimensional flow cardiovascular magnetic resonance for the assessment of mitral stenosis. *European Heart Journal: Case Reports*, 5 (12). ytab465. ISSN: 2514-2119

<https://doi.org/10.1093/ehjcr/ytab465>

Reuse

This article is distributed under the terms of the Creative Commons Attribution (CC BY) licence. This licence allows you to distribute, remix, tweak, and build upon the work, even commercially, as long as you credit the authors for the original work. More information and the full terms of the licence here:

<https://creativecommons.org/licenses/>

Takedown

If you consider content in White Rose Research Online to be in breach of UK law, please notify us by emailing eprints@whiterose.ac.uk including the URL of the record and the reason for the withdrawal request.

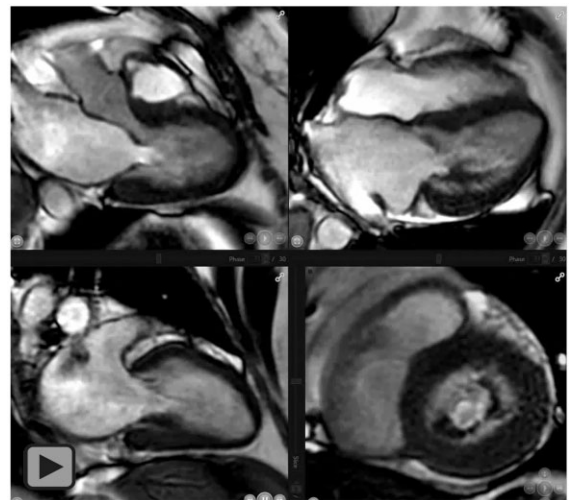
Four-dimensional flow cardiovascular magnetic resonance for the assessment of mitral stenosis

James Wardley ^{1,2}, Andrew Swift³, Alisdair Ryding ¹, and Pankaj Garg ^{1,2,3*}

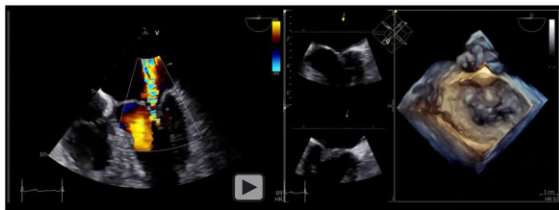
¹Cardiology, Norfolk and Norwich University Hospital NHS Trust, Colney Lane, NR4 7UY, Norwich, UK; ²Cardiovascular and Metabolic Health, Norwich Medical School, Bob Champion Research & Education Building, University of East Anglia, NR4 7UQ, Norwich, UK; and ³Department of Infection, Immunity & Cardiovascular Disease, University of Sheffield, S10 2RX, Sheffield, UK

Received 9 September 2021; first decision 2 October 2021; accepted 10 November 2021; online publish-ahead-of-print 19 November 2021

A 52-year-old lady presented with breathlessness with no physical stigmata of heart failure. Transthoracic echocardiography demonstrated a rheumatic-looking mitral valve (MV) with a mean pressure gradient (PG) of 12 mmHg, a dilated left atrium (32 cm²), and moderate mitral regurgitation (MR) (Figure 1A–C) (Video 1). On transoesophageal echocardiography (TOE), the mean PG was 7 mmHg and the MR was severe with a PISA of 0.1–1.02 cm (Figure 1D–F). At this stage, the regional heart team suggested further assessment by invasive haemodynamic and cardiovascular magnetic resonance (CMR). For CMR, in addition to the standard assessment, four-dimensional (4D) flow was done (Figure 1G–L) (Video 1–2). CMR cines demonstrated similar restrictive MV leaflets. On short-axis cines, the MV opening area at the tips of the leaflets was 2.1 cm² and on 4D flow assessment the mean MV PG was 6 mmHg with only 13 mL of MR. Coronary angiography did not demonstrate any coronary disease and the invasive haemodynamic assessment was in keeping with the TOE with 6 mmHg mean PG (Figure 1M and N); the MV area was 2.1 cm² by the Gorlin method. To summarize, TOE, invasive assessment, and CMR confirmed she had



Video 2 This video demonstrates both long-axis and short-axis cines on CMR of the mitral valve to make a comprehensive assessment of the leaflet pathology.



Video 1 This video demonstrates mitral regurgitation by colour Doppler echocardiography and three-dimensional reconstruction of the mitral valve.

at most mild to moderate mitral stenosis (MS). CMR elucidated the MR severity to be mild. This case highlights several points: echocardiography can overestimate the regurgitation jet in restrictive valvular opening, mainly due to exaggeration of turbulent backward-flow through a restrictive MV; MR quantification by CMR can help decision-making in cases where echocardiographic methods are inconsistent; and as this case highlights for the first-time, 4D flow can quantify mean PG across the MV for MS assessment.

Consent: The authors confirm that written consent for submission and publication of this case report including images and

* Corresponding author. Tel: +441603 287516, Email: p.garg@uea.ac.uk

Handling Editor: Massimo Mapelli

Peer-reviewers: Deborah Cosmi and Anna Giulia Pavon

© The Author(s) 2021. Published by Oxford University Press on behalf of the European Society of Cardiology.

This is an Open Access article distributed under the terms of the Creative Commons Attribution License (<https://creativecommons.org/licenses/by/4.0/>), which permits unrestricted reuse, distribution, and reproduction in any medium, provided the original work is properly cited.

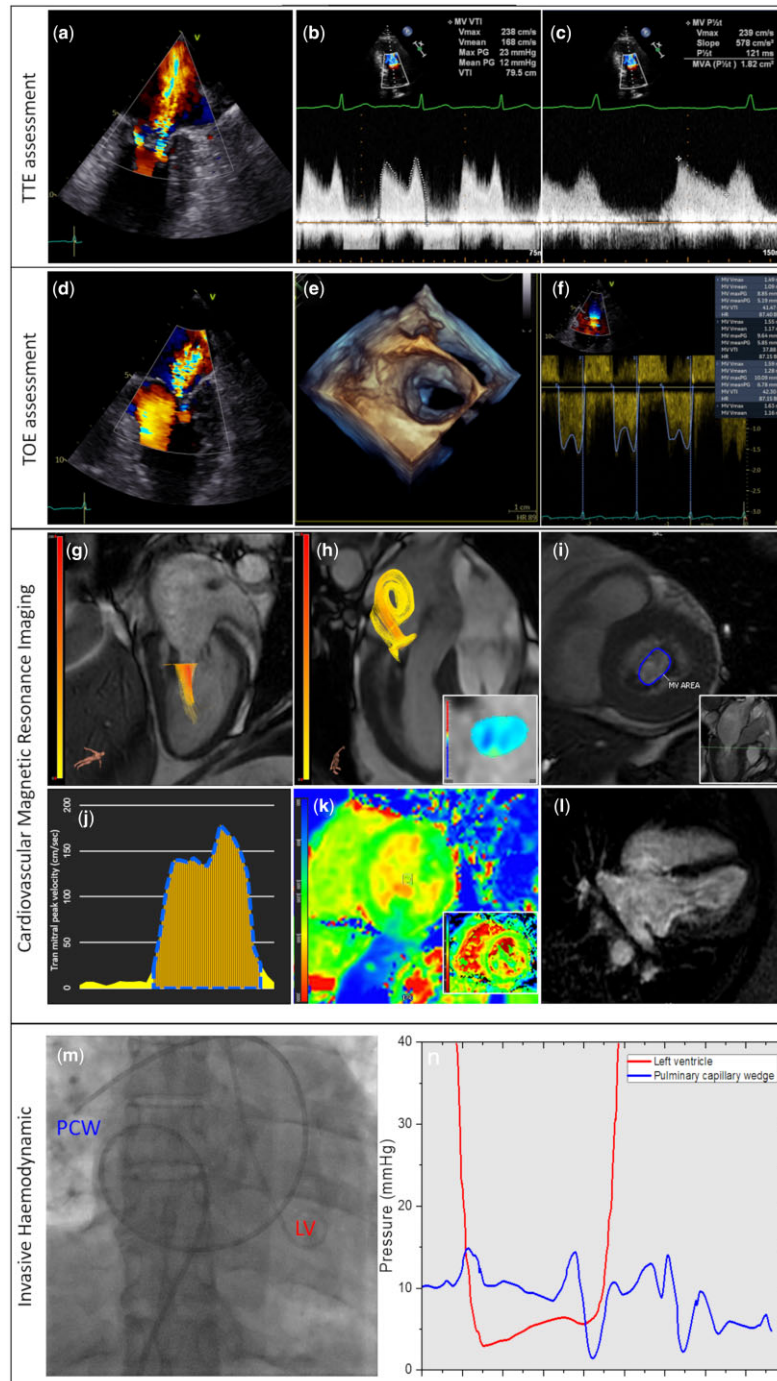


Figure 1 Multi-modality assessment of mixed mitral valve disease. Transthoracic echocardiography: Turbulent mitral regurgitation demonstrated in the apical two chamber with dilated left atrium (A). Velocity time integral-derived mean pressure gradient through the mitral valve (B) was 12 mmHg and the pressure half-time (C) estimated the mitral valve area to be 1.82 cm². On transoesophageal echocardiography, severe mitral regurgitation is seen in two-chamber (D) and on three-dimensional reconstruction of the mitral valve (E) the degree of mitral stenosis does not appear to be severe. On velocity time integral (F), the mean pressure gradient was 6 mmHg. On four-dimensional flow cardiovascular magnetic resonance, the peak mitral inflow velocity was traced throughout the diastole using plane with maximum velocity (G) and during systole (H), a reformatted plane was generated perpendicular to the mitral regurgitation jet in the left atrium (H). On short-axis cine, mitral valve area was 2.1 cm² at the tips of mitral valve (I). The mean pressure gradient for mitral inflow was 6 mmHg (J). T1-mapping (K) and extracellular mapping demonstrated normal myocardium. There was no evidence of left ventricular scar on late gadolinium enhancement (L). Invasive haemodynamic assessment was done using a multipurpose catheter placed for the capillary wedge pressure and a pigtail catheter within the left ventricle to allow recording of simultaneous pressures (M). The simultaneous pressure tracings of left ventricle and pulmonary capillary wedge are demonstrated (N).



Video 3 The peak mitral inflow velocity was traced throughout the diastole using plane with maximum velocity and during systole, a reformatted plane was generated perpendicular to the mitral regurgitation jet in the left atrium.

associated text has been obtained from the patient in line with COPE guidance.

Conflict of interest: P.G. is clinical advisor to Pie Medical Imaging and Medis Medical Imaging.

Funding: This work was partly funded by Wellcome Trust grants (220703/Z/20/Z and 215799/Z/19/Z). For the purpose of open access, the author has applied a CC BY public copyright licence to any Author Accepted Manuscript version arising from this submission.