



Deposited via The University of Leeds.

White Rose Research Online URL for this paper:

<https://eprints.whiterose.ac.uk/id/eprint/182130/>

Version: Accepted Version

---

**Article:**

Wells, HBM, Porensky, LM, Veblen, KE et al. (2022) At high stocking rates, cattle do not functionally replace wild herbivores in shaping understory community composition. *Ecological Applications*, 32 (3). e2520. ISSN: 1051-0761

<https://doi.org/10.1002/eap.2520>

---

© 2021 The Ecological Society of America. This is the peer reviewed version of the following article: Wells, HBM , Porensky, LM, Veblen, KE et al. (6 more authors) (2022) At high stocking rates, cattle do not functionally replace wild herbivores in shaping understory community composition. *Ecological Applications*, 32 (3). e2520. ISSN 1051-0761, which has been published in final form at <https://doi.org/10.1002/eap.2520>. This article may be used for non-commercial purposes in accordance with Wiley Terms and Conditions for Use of Self-Archived Versions. This article may not be enhanced, enriched or otherwise transformed into a derivative work, without express permission from Wiley or by statutory rights under applicable legislation. Copyright notices must not be removed, obscured or modified. The article must be linked to Wiley's version of record on Wiley Online Library and any embedding, framing or otherwise making available the article or pages thereof by third parties from platforms, services and websites other than Wiley Online Library must be prohibited.

**Reuse**

Items deposited in White Rose Research Online are protected by copyright, with all rights reserved unless indicated otherwise. They may be downloaded and/or printed for private study, or other acts as permitted by national copyright laws. The publisher or other rights holders may allow further reproduction and re-use of the full text version. This is indicated by the licence information on the White Rose Research Online record for the item.

**Takedown**

If you consider content in White Rose Research Online to be in breach of UK law, please notify us by emailing [eprints@whiterose.ac.uk](mailto:eprints@whiterose.ac.uk) including the URL of the record and the reason for the withdrawal request.

Journal: Ecological Applications

Manuscript type: Article

At high stocking rates, cattle do not functionally replace wild herbivores in shaping understory community composition

Harry B. M. Wells<sup>1,2</sup>, Lauren M. Porensky<sup>3,4</sup>, Kari E. Veblen<sup>3,5</sup>, Corinna Riginos<sup>3,6</sup>, Lindsay C. Stringer<sup>1,7</sup>, Andrew J. Dougill<sup>1</sup>, Mathew Namoni<sup>3</sup>, Jackson Ekadeli<sup>3</sup>, Truman P. Young<sup>3,8</sup>

1. Sustainability Research Institute, School of Earth and Environment, University of Leeds, Leeds, LS2 9JT, UK
2. Lolldaiga Hills Research Programme, P.O. Box 26 Nanyuki, Kenya
3. Mpala Research Centre, Nanyuki, Kenya
4. USDA–ARS Rangeland Resources Research Unit, Fort Collins, CO 80526, USA
5. Department of Wildland Resources and Ecology Center, Utah State University, Logan, UT 84322, USA
6. The Nature Conservancy, 258 Main Street, Suite 200, Lander, Wyoming 82520 USA
7. Department of Environment and Geography, University of York, York, YO10 5NG, UK
8. Department of Plant Sciences and Ecology Graduate Group, University of California, Davis, CA 95616, USA

Corresponding author: Harry Wells. E-mail: [harrybmwells@gmail.com](mailto:harrybmwells@gmail.com)

Received 13 May 2021; revised 9 July 2021; accepted 9 September 2021.

This article has been accepted for publication and undergone full peer review but has not been through the copyediting, typesetting, pagination and proofreading process which may lead to differences between this version and the [Version of Record](#). Please cite this article as doi: [10.1002/eap.2520](https://doi.org/10.1002/eap.2520)

This article is protected by copyright. All rights reserved.

Handling Editor: Neil H. Carter

**Open Research:** Data (Wells et al. 2021c) are available in Figshare:

<https://doi.org/10.6084/m9.figshare.16615888.v3>

Accepted Article

## Abstract

Over a quarter of the world's land surface is grazed by cattle and other livestock, which are replacing wild herbivores, potentially impairing ecosystem structure and functions. Previous research suggests that cattle at moderate stocking rates can functionally replace wild herbivores in shaping understory communities, but it is unclear whether this is also true under high stocking rates. It is also unclear whether wild herbivore effects on plant communities moderate, enhance, or are simply additive to the effects of cattle at high stocking rates. To evaluate the influence of cattle stocking rates on the ability of cattle to functionally replace wild herbivores and test for interactive effects between cattle and wild herbivores in shaping understory vegetation, we assessed herbaceous vegetation in a long-term exclosure experiment in a semi-arid savanna in central Kenya that selectively excludes wild mesoherbivores (50-1000 kg) and megaherbivores (elephant and giraffe). We tested the effects of cattle stocking rate (zero/moderate/high) on herbaceous vegetation (diversity, composition, leafiness) and how those effects depend on the presence of wild mesoherbivores and megaherbivores. We found that herbaceous community composition (primary ordination axis) was better explained by the presence/absence of herbivore types than by total herbivory, suggesting that herbivore identity is a more important determinant of community composition than total herbivory at high cattle stocking rates. The combination of wild mesoherbivores and cattle stocked at high rates led to increased bare ground and annual grass cover, reduced perennial grass cover, reduced understory leafiness, and enhanced understory diversity. These shifts were weaker or absent when cattle were stocked at high stocking rates in the absence of wild mesoherbivores. Megaherbivores tempered the effects of cattle stocked at high rates on herbaceous community composition but amplified the effects of high cattle stocking rate on bare ground and understory diversity. Our results show that, contrary

to previous findings at moderate stocking rates, cattle at high stocking rates do not functionally replace wild herbivores in shaping savanna herbaceous communities. In mixed-use rangelands, interactions between cattle stocking rate and wild herbivore presence can lead to non-additive vegetation responses with important implications for both wildlife conservation and livestock production.

Key words: biodiversity conservation, cattle stocking rate, elephant, forb, grass, herbaceous plant communities, Kenya Long-term Exclosure Experiment, livestock-wildlife interactions, rangeland ecology

## Introduction

Cattle and other livestock graze more than a quarter of the Earth's land surface (Steinfeld et al., 2006) and are estimated to comprise >90% of the world's non-human mammalian biomass (Bar-On et al, 2018). Across the world's rangelands, including African savannas, livestock continue to replace large wild herbivores (>50 kg), potentially with negative impacts on ecosystem structure and function (du Toit and Cumming, 1999; Hempson et al., 2017). Understanding how plant communities respond to partial or complete replacement of large wild herbivores by livestock requires knowledge of i) the extent to which and at what stocking rates livestock can functionally replace large wild herbivores and, ii) in mixed-use rangelands, whether the effects of wild and domestic herbivores are simply additive to those of livestock grazing, or whether large wild herbivores moderate or amplify the effects of livestock on vegetation. This understanding is critical in rangeland management for maintaining plant diversity and predicting plant community responses to ecological restoration and herbivore reintroductions. Shifts in rangeland plant

communities are also important because associated changes in forage quality and quantity can impact large wild herbivore abundance and diversity (Oloff et al., 2002), as well as livestock grazing (Odadi et al., 2011).

In grasslands, including African savannas, grazing and/or browsing wild herbivores affect understory plant biomass (Staver et al., 2019), productivity (Frank et al., 2016), diversity (Koerner et al., 2018; Porensky et al., 2013), species composition (Veblen et al., 2016) and plant functional traits (van der Plas et al., 2016). The consequences of wildlife extirpation for understory vegetation may be dependent on climate and the identity of the species lost or the species remaining, either wild or domestic (Burkepile et al., 2017; Burns et al., 2009; Goheen et al., 2013; Staver & Bond, 2014; van der Plas et al., 2016). Domestic herbivores also affect understory community composition, diversity, biomass (e.g., Pakeman et al., 2019; Seymour et al., 2010; Veblen et al., 2016) and productivity (Charles et al., 2017), and can reduce ecosystem structure and function in ways that are mediated by climate, grazing regime, and herbivore identity (Cingolani et al., 2005; Eldridge et al., 2016, 2018; Liu et al., 2015; O'Connor et al., 2010; Young et al., 2013). Several studies have examined the effects of livestock stocking rates on vegetation diversity and community composition (e.g., Pakeman et al., 2019; Porensky et al., 2016; Seymour et al., 2010). In contrast to only investigating presence versus absence of livestock (e.g., Charles et al., 2017; Koerner et al., 2018; Porensky et al., 2013; Veblen et al., 2016), studying the effects of different livestock stocking rates better allows us to understand and adjust the management of globally dominant domestic herbivores to meet biodiversity conservation objectives.

Livestock at a particular stocking rate could functionally compensate for wild herbivore losses in shaping plant communities if: i) livestock diets mirror the collective diets of the

Accepted Article

assemblage of wild herbivores lost (Cingolani et al., 2014); ii) plant communities respond primarily to total herbivory (not herbivore identity), which remains comparable following replacement of wild herbivores by livestock (Perevolotsky & Seligman, 1998; Veblen et al., 2016); and/or iii) domestic and wild herbivores have similar non-consumptive effects on vegetation (e.g. trampling or nutrient addition via defecation) and these effects overpower consumptive effects. However, if criteria such as these are not met, replacement of wild herbivores by livestock would lead to plant community shifts. For example, if livestock stocking rates are increased to the point that the total herbivory by domestic and wild herbivores exceeds the herbivore pressure with which the ecosystem coevolved, plant communities can cross thresholds to assume functionally different states. There is ample evidence that rangeland vegetation can be characterised by threshold dynamics and that herbivory – by livestock, wild herbivores, or both – can drive shifts among states (Bestelmeyer et al., 2015; Briske et al., 2003; Vetter, 2005).

We generally lack studies that experimentally tested the effects of large wild herbivores in the context of more than two livestock stocking rates (i.e., presence versus absence) on understory vegetation. Previous work from our study system in central Kenya identified strong impacts of cattle presence on understory plant successional dynamics, diversity, and community stability (Veblen & Young, 2010; Porensky et al., 2013; Riginos et al., 2018). Veblen et al. (2016) showed that savanna understory plant community composition (measured using primary ordination axis scores) was explained more by total herbivory than herbivore identity, and cattle at moderate densities appeared to functionally replace the resident large wild herbivore assemblage in shaping understory vegetation. However, whether this pattern persists at higher cattle stocking rates is unknown, as is how the effects of high cattle stocking rates interact with

Accepted Article

native herbivore presence. Investigating the effects of increasing cattle stocking rates is important because rangelands in this region, particularly those that are communally managed, are stocked at higher rates than the moderate stocking rates evaluated by Veblen et al. (2016) (Crego et al., 2020; Wells et al., 2021a).

To test this experimentally, we assessed herbaceous vegetation in the Kenya Long-term (25-year) Exclosure Experiment, which enabled us to test the individual and interactive effects of wild mesoherbivores (50-1000 kg), megaherbivores (elephant and giraffe), and cattle at three stocking rates (zero/moderate/high). Our objectives were to investigate: 1) the extent to which cattle at high stocking rates functionally replace the loss of large wild herbivores (wild mesoherbivores and megaherbivores), and 2) whether the effects of large wild herbivores on savanna vegetation moderate, enhance, or are simply additive to the effects of cattle at moderate and high stocking rates.

## Materials and methods

### STUDY SITE

We conducted this study in the Kenya Long-term Exclosure Experiment (KLEE) plots at Mpala Research Centre (0°17'N, 36°52'E, 1800 masl) in Laikipia, Kenya. Kenya is a biodiversity hotspot in which livestock-keeping plays an important role for livelihoods and culture (Sundaresan & Riginos, 2010). Rainfall at the site is weakly trimodal with a pronounced dry season December-March. From 2001 to 2019, annual rainfall averaged 613 mm yr<sup>-1</sup> (range: 421-1009 mm yr<sup>-1</sup>, annual coefficient of variation: 27%). Rainfall totals over the March-May 'wet season' prior to sampling were 393, 210 and 204 mm in 2018, 2019 and 2020 respectively (2001-2019 mean: 225 mm; Appendix S1: Fig. S1). Soils are poorly drained vertisols with high

clay content (>40%) known as ‘black cotton’. Black cotton soils are widespread across Africa and with other vertisols cover >100 million hectares across the continent (Ahmad, 1996). The overstory of this savanna ecosystem is dominated by *Acacia drepanolobium* (syn. *Vachellia drepanolobium*, 97% of the canopy; Young et al., 1997), while five perennial grass species comprise 85% of herbaceous understory cover (Porensky et al., 2013). Mpala Research Centre is managed for both wildlife conservation and livestock production, where cattle are the main domestic animal. Livestock grazing lands cover 80% of Kenya’s area and account for >12% of gross domestic product (Allan et al., 2017).

## EXPERIMENTAL DESIGN

The KLEE plots, established in 1995, use barriers to control access to 200 × 200 m (4-ha) treatment plots by three herbivore guilds – wild megaherbivores (‘M’, elephant and giraffe), wild mesoherbivores (‘W’, 50-1000 kg) and cattle (‘C’) – in different combinations. There are three replicate blocks, each consisting of six treatments (18 plots in total): 1) ‘MWC’ (accessed by megaherbivores, wild mesoherbivores and cattle), 2) ‘MW’ (accessed by megaherbivores and wild mesoherbivores), 3) ‘WC’ (accessed by wild mesoherbivores and cattle), 4) ‘W’ (accessed by wild mesoherbivores only), 5) ‘C’ (accessed by cattle only), 6) ‘O’ (excludes cattle, wild mesoherbivores and megaherbivores). The treatment plots accessible to cattle are typically grazed by 100-120 mature Boran cows *Bos indicus* (sometimes with calves and/or bulls) for 2-3 days (2 hrs day<sup>-1</sup>) within a 2-week period, 3-4 times per year. The timing and number of grazing days depends on forage availability and reflects typical grazing regimes of ranches in the region, wherein cattle graze in an area for several days before being moved to allow that area to recover.

Accepted Article

Each of the treatment plots accessible to cattle (MWC, WC, C) contains a 50 × 50 m (0.25-ha, or 1/16 of the plot) subplot (established in 2008), in which the same cattle herd is grazed for a further 30 mins following the initial 2-hr grazing period in the wider plot, to achieve an approximately five-fold increase in cattle stocking rate compared to the wider plot (Appendix S1: Figs. S2–S3). These three additional treatments are named: 1) MWCh, 2) WCh, and 3) Ch, where ‘h’ denotes high cattle stocking rate. We note that ‘grazing’ also involves trampling and nutrient cycling effects (Sitters et al., 2020). Grazing behaviour can also be affected by time of day and the presence of other herbivores (Odadi et al., 2017). Because cattle only access individual plots a few times per year, responses of most large wild herbivores are unlikely to be due to direct interaction with cattle or herders. Fire has not been used as a management tool in this ecosystem for over 50 years and is rarely used by other ranches in the region. Natural-ignition fires have not occurred in decades. See Young et al. (1997) and Young et al. (2018) for further details of the experimental design.

#### DATA COLLECTION

To assess understory vegetation, we sampled herbaceous plants during May-August in 2018, 2019, and 2020. We measured aerial cover every 10 m by counting the number of pins of a 10-point pin frame (vertical pins separated by 5 cm) hit by each species (maximum one hit per pin per species). For the main six treatments (O, C, W, WC, MW, MWC), we sampled 10 100-m transects within the central hectare of the 18 4-ha treatment plots, recording pin hits every 20 m for a total of 50 sites. We further subsampled pin hits and leaf verses stem hits for the five dominant species (*Brachiaria lachnantha*, *Themeda triandra*, *Pennisetum stramineum*, *P. mezianum*, *Lintonia nutans*) by sampling four of 10 transects (second, fourth, sixth and eighth

Accepted Article

transects) totalling 20 sites. For the 50 × 50 m high cattle stocking rate subplots (Ch, WCh, MWCh), we ran four 40-m transects (leaving a 10-m buffer along two sides to minimize edge effects of the 4-ha plot), recording pin hits every 10 m for a total of 16 sites. Leaf versus stem pin hits were only recorded at eight sites (second and fourth transects).

To estimate total herbivory, we used camera traps. We deployed one Browning Strike Force HD Pro X camera in each of the 27 plots (three replicates of nine treatments) between 23 May 2019 and 26 May 2020. Cameras were secured to a tree 80 cm above the ground, avoiding treeless glades that occur throughout the landscape, and ensuring a view unobstructed by woody vegetation within the detection zone. Cameras were programmed to take three images per trigger (1 second apart) with a 1-min delay between triggers. Cameras were checked every 2-3 weeks to download images, replace batteries and ensure cameras were operational. Camera traps were operational for an average of 364 ( $\pm 2$  SE, range: 340-374) trap nights. Each camera's detection area is 275 m<sup>2</sup> calculated as:  $(\text{detection angle} \times 360^{-1}) \times \pi \times \text{detection range}^2$ , where detection angle is in degrees and detection range in metres. For further details of the camera trap methodology see Wells et al. (2021b). We calculated total annual herbivory as  $\sum \text{body mass} \times \text{number of individuals} \times \text{duration} \times \text{detection area}^{-1} \times \text{trap night}^{-1} \times 365.25$ , for each species where the duration is in hours (each image corresponds to one minute). We included the sixteen herbivore species >2 kg: elephant (*Loxodonta africana*), giraffe (*Giraffa camelopardalis*), plains zebra (*Equus quagga*), Grevy's zebra (*Equus grevyi*), eland (*Taurotragus oryx*), buffalo (*Syncerus caffer*), hartebeest (*Alcelaphus buselaphus*), oryx (*Oryx beisa*), Grant's gazelle (*Nanger granti*), impala (*Aepyceros melampus*), ostrich (*Struthio camelus*), duiker (*Sylvicapra grimmia*), steenbok (*Raphicerus campestris*), warthog (*Phacochoerus africanus*), hare (*Lepus* spp.), and cattle. Although the total herbivory metric was

calculated for a single 12-month period, this period was representative of average annual rainfall at the site (Appendix S1: Fig. S1).

## STATISTICAL ANALYSES

All statistical analyses were performed in R version 3.6.2 (R Core Team, 2019). To test how the understory plant community was responding to treatments and total herbivory, we assessed community composition and quantified plant diversity metrics (effective number of species, evenness, and dominance).

To assess herbaceous community composition, we performed an unconstrained ordination in the *boral* package version 1.9 (Hui, 2016) on relative abundance data by fitting a latent variable model (negative binomial with log-link, no fixed effects, and random effect of year), using Bayesian Markov chain Monte Carlo (MCMC) parameter estimation. Model-based methods have several advantages over, and have been shown to outperform, distance-based approaches to ordination such as non-metric multidimensional scaling (Warton et al., 2015). We ran one MCMC chain for  $10^5$  iterations, discarded the first  $10^4$  as burn-in and thinned by one in 90 iterations for a total of 1,000 posterior samples. We used very weakly informative priors with normal distributions, mean zero and variance 10. We assessed model convergence by visualising MCMC chain traces and using Geweke diagnostics (Hui, 2016) and ensured that residuals met model assumptions (Appendix S1: Fig. S4). Prior to diversity and ordination analyses, species observed in <5% of samples (plots within years) were excluded (*c.f.*, Veblen et al., 2016), leaving 51 taxa (48 species and three multi-species genera) of the original 81 taxa (78 species and three multi-species genera).

We used the *vegan* package version 2.5-6 (Oksanen et al., 2019) to calculate Shannon-Wiener diversity,  $H'$ , which we converted to ‘effective number of species’ (the number of equally likely elements needed to produce the diversity value,  $H'$ ) by taking  $\exp(H')$ , to facilitate interpretation (Jost, 2007). We calculated evenness by taking  $H'/H'_{max}$ , and assessed dominance using the Berger-Parker dominance index,  $D$  (relative cover of the most abundant species; Berger & Parker, 1970).

To evaluate the individual and interactive effects of wild mesoherbivore presence, megaherbivore presence and cattle stocking rate on understory vegetation, we employed linear mixed-effects models (LMMs) to model herbivore treatment effects on 1) primary and secondary community ordination axes (latent variables 1 and 2); 2) absolute cover of species groups (life forms: grass, forb; life histories: annual, perennial); 3) species-specific relative cover; 4) species-specific and across-species leaf-to-stem ratio (leaf:stem); and 5) diversity metrics (effective number of species, evenness, and dominance). We implemented LMMs in the *glmmTMB* package version 1.0.1 (Brooks et al., 2017). To distinguish between individual and interactive effects of herbivore types we coded cattle (none/moderate/high), wild mesoherbivores (presence/absence), megaherbivores (presence/absence), and interactive terms cattle  $\times$  mesoherbivores and cattle  $\times$  megaherbivores as fixed effects. Metrics derived from pin hits (absolute/relative cover) were scaled to correct for unbalanced sampling effort – i) 16 versus 50 sampling locations in high-cattle-stocking-rate and all other treatments respectively, and ii) subsampling of dominant species – and square-root-transformed to normalise.

To evaluate the effects of total herbivory on understory vegetation we used LMMs to test the relationship between total pin hits and the five sets of herbaceous plant response variables listed above. Second-order polynomial functions were implemented when their fit had  $p < 0.05$ .

To directly compare herbivore-identity and total-herbivory approaches to modelling herbaceous plant responses, we performed model selection using Akaike's information criterion (AIC). We compared LMMs for the following three predictors: 1) total herbivory using a linear or second-order polynomial function; 2) herbivore identity, using the presence/absence of the three herbivore types (cattle, wild mesoherbivores and megaherbivores); 3) herbivore identity, as in model 2, but including cattle-mesoherbivore and cattle-megaherbivore interactions. In all LMMs we coded block nested within year (2018/2019/2020) as the random effect. Because we were comparing herbivore-identity and total-herbivory approaches to modelling herbaceous community composition, we did not explore the effects of the covariates included in each model.

## Results

*Understory community composition is primarily shaped by herbivore identity, not total herbivory, at high cattle stocking rates*

Understory community composition, represented by primary ordination axis, latent variable 1, was affected by both herbivore treatments and total herbivory (Fig. 1). The treatments without high cattle stocking rates showed a similar relationship with total herbivory to that reported by Veblen et al. (2016). However, two lines of evidence suggest that high cattle stocking rate, as included in the present study, was the principal driver of understory community composition. Firstly, model selection showed that herbivore identity (presence/absence of herbivore types) was a more important predictor of herbaceous community composition (represented by latent variable 1) than total herbivory (Table 1). Secondly, treatments with high cattle stocking rates separated from other treatments in the ordination biplots, particularly along the secondary ordination axis – largely driven by annual grasses (Fig. 2). The primary and secondary ordination

axes (latent variables 1 and 2, respectively) explained 58% of the variation in herbaceous community composition and explained more of the variation of rarer species (Appendix S1: Fig. S5).

The relative importance of herbivore identity and total herbivory varied across vegetation metrics. Total herbivory was a better predictor ( $\Delta\text{AIC} > 2$ ) of bare ground, leafiness (leaf:stem), evenness, and absolute covers of annual and perennial forbs, and perennial grasses. Meanwhile, herbivore identity was a better predictor of total herbaceous cover, annual grass cover, effective number of species and dominance (Table 1). Detailed statistical results are presented in Appendix S1: Tables S1–S2.

*The effects of cattle and large wild herbivores on the understory community are non-additive*

Megaherbivores moderated the effects of cattle on understory community composition at both moderate and high stocking rates (Figs. 1–2). This was evidenced by the combined effect of cattle and megaherbivores on the primary ordination axis, latent variable 1, being weaker than the sum of their individual effects (megaherbivores  $\times$  cattle, moderate:  $Z=-2.4$ ,  $p=0.02$ , high:  $Z=-3.3$ ,  $p<0.001$ ).

Bare ground was positively related to total herbivory and was minimal in the absence of cattle (Fig. 3; Appendix S1: Table S2). The combined effects of cattle at high stocking rates and wild mesoherbivores increased bare ground 96% more than the sum of their individual effects (mesoherbivores  $\times$  cattle, high:  $Z=2.8$ ,  $p=0.004$ ). This led to over three times as much bare ground in the two treatments accessible to both mesoherbivores and cattle at high stocking rates compared to all other treatments. Total herbaceous cover was negatively related to total herbivory, exhibiting a quadratic response (Fig. 3; Appendix S1: Table S2), but no interactive

Accepted Article

effects between domestic and wild herbivores on total cover were detected (Appendix S1: Table S1).

Increasing total herbivory was associated with declines in absolute covers of perennial grasses, perennial forbs, and annual forbs (Fig. 4a; Appendix S1: Table S2). Compared to the sum of their individual effects, the combined effect of cattle and wild mesoherbivores reduced perennial grass cover more (mesoherbivores  $\times$  cattle, high:  $Z=-3.0$ ,  $p=0.003$ ) and perennial forb cover less (mesoherbivores  $\times$  cattle, high:  $Z=6.3$ ,  $p<0.001$ ; Figs. 4a and Appendix S1: Fig. S6). This led to 11% and 28% lower covers for perennial grasses and forbs, respectively, in the two treatments accessible to both wild mesoherbivores and cattle at high stocking rates compared to the seven other treatments. Species-specific treatment effects on relative cover and its relationship with total herbivory for plant functional groups and the eight most common species are shown in Fig. 4a and Appendix S1: Tables S1-S2 and Fig. S7.

Understory leafiness (leaf:stem) exhibited a quadratic response to total herbivory, where leafiness increased under increasing herbivory when total herbivory was below  $5 \text{ kg hr m}^{-2} \text{ yr}^{-1}$ , but decreased as herbivory increased beyond that level. Interactive effects between cattle and wild mesoherbivores were evident in that understory leafiness was increased by the combined effect of cattle and wild mesoherbivores less than the sum of their individual effects, at both moderate and high stocking rates (mesoherbivores  $\times$  cattle, moderate:  $Z=-2.2$ ,  $p=0.04$ , high:  $Z=-3.6$ ,  $p<0.001$ ; Fig. 4b). Species-specific treatment effects on understory leafiness for the five most common species are shown in Appendix S1: Table S3 & Fig. S8.

Wild mesoherbivores and cattle had positively synergistic effects on understory diversity (measured as effective number of species, evenness, and dominance), particularly at high stocking rates (Fig. 5). The combined effect of wild mesoherbivores and cattle at high stocking

Accepted Article

rates on the effective number of species (mesoherbivores × cattle, high:  $Z=3.2$ ,  $p=0.002$ ) and evenness (mesoherbivores × cattle, high:  $Z=4.3$ ,  $p<0.001$ ) of the herbaceous community was greater than the sum of their individual effects. This led to 32% (equivalent to almost 2 species) and 33% higher diversity and evenness, respectively, in the two treatments accessible to both wild mesoherbivores and cattle at high stocking rates compared to the seven other treatments. The reduction of understory dominance by cattle and wild mesoherbivores combined was also stronger than the sum of their individual effects (mesoherbivores × cattle, moderate:  $Z=-2.4$ ,  $p=0.02$ , high:  $Z=-4.5$ ,  $p<0.001$ ), leading to a 29% lower dominance in treatments accessible to both wild mesoherbivores and cattle than all other treatments.

## Discussion

Although individual effects of large wild herbivores and livestock on herbaceous vegetation are well documented (Frank et al., 2016; Koerner et al., 2018; Pakeman et al., 2019; Porensky et al., 2016; Seymour et al., 2010; Staver et al., 2019; van der Plas et al., 2016), to our knowledge, this study provides the first experimental evidence of the separate and combined effects of wild herbivores and cattle at more than two stocking rates (i.e., more than simply presence versus absence) on vegetation. After 11 years of high cattle stocking rate treatments (24 years after the enclosures were established), the data showed that understory community composition was primarily shaped by herbivore identity rather than total herbivory and the effects of cattle stocking rate interacted with the presence of large wild herbivores (mesoherbivores and megaherbivores). Wild mesoherbivores amplified the effects of high cattle stocking rates in terms of increasing bare ground and reducing perennial grass cover, while they tempered the positive effects of high cattle stocking rates on increasing understory leafiness. The quadratic

Accepted Article

response of leafiness to total herbivory suggests that forage quality peaks at intermediate herbivory. These changes in forage quantity and quality have important implications for both large wild herbivore conservation and cattle production. Understanding these non-additive interactions between cattle and large wild herbivores will aid in managing mixed-use rangelands and implementing ecological restoration and/or rewilding globally. Notably, the measured effects and interactions may differ in areas with different large wild herbivore assemblages or different spatio-temporal patterns of herbivory.

*Cattle at high stocking rates do not functionally replace large wild herbivores in shaping understory community composition*

Herbivore identity was more important than total herbivory in explaining understory plant community composition when including high cattle stocking rates (Table 1). Cattle at high stocking rates shifted the understory plant community in quantitatively different ways from large wild herbivores or moderate cattle stocking rates, and in ways that were not predicted by total herbivory alone (Fig. 1). In a previous study of the same exclosure experiment that did not consider high cattle stocking rates, Veblen et al. (2016) concluded that cattle at moderate stocking rates functionally replace large wild herbivores, and that total herbivory was the primary driver of plant community composition. Our results are consistent with those of Veblen et al. (2016) when disregarding high cattle stocking rate treatments. However, our findings provide a strong caveat to those of Veblen et al. (2016), suggesting a threshold of cattle grazing intensity exists beyond which their impacts change, akin to thresholds documented in other rangelands (Bestelmeyer et al., 2015; Briske et al., 2003; Vetter, 2005). In other words, cattle stocked at moderate rates were able to mimic herbivory by the assemblage of large wild

Accepted Article

herbivores, but unique effects of cattle on understory community composition became apparent at high cattle stocking rates. Because each herbivore species has a unique morphology and dietary profile (Table 1 in Veblen et al., 2016), albeit with some overlap (Kartzinel et al., 2015), increased prevalence of any one herbivore species, wild or domestic, may cause understory community composition to shift in ways that are not governed by total herbivory (Tóth et al., 2016). This suggests that an increase in the density of any single herbivore, domestic or wild, may shift understory plant communities in specific ways that are otherwise muted when the species is at moderate densities. Further research would be required to confirm this. However, the ability of cattle at moderate stocking rates to mimic the effects of an assemblage of large wild herbivores on understory vegetation may also be because their relative consumption of grasses and forbs reflects the overall relative consumption of grasses and forbs by the grazers, mixed feeders, and browsers represented in the large wild herbivore assemblage.

*Cattle stocking rate interacts with large wild herbivore accessibility to shape understory vegetation*

Under high cattle stocking rates, the negative effects of herbivory on forage quantity and quality were enhanced more than additively in the presence of wild mesoherbivores, as evidenced by more bare ground, lower perennial grass cover, and lower understory leafiness. Some understory community metrics also exhibited non-linear relationships with total herbivory – relationships that are likely to share similar mechanisms to those underlying interactive effects between cattle and large wild herbivores. For example, perennial forb cover was both nonlinearly related with total herbivory and reduced by high cattle stocking rates less in the presence of wild mesoherbivores (predominantly plains zebra *Equus quagga*; Fig. 4a). These patterns are partly

explained by perennial forbs (dominated by unpalatable *Helichrysum (Pseudognaphalium) glumaceum*) resisting further reductions in cover despite increased herbivore pressure (Appendix S1: Fig. S7), possibly via compensatory growth or increased production of defensive chemicals that reduce palatability (Quintero & Bowers, 2013). Similarly, relative cover of the palatable dominant perennial grass, *Brachiaria lachnantha*, decreased with total herbivory at a greater rate as herbivory increased (Appendix S1: Fig. S7) and was impacted non-additively by interactions between cattle at high stocking rates and both wild mesoherbivores and megaherbivores. These patterns can be explained by i) *B. lachnantha* being pushed beyond physiological thresholds as total herbivory was increased by wild and domestic herbivores (Appendix S1: Fig. S7); or ii) foraging behaviour and dietary selectivity being altered by the presence of other herbivore species resulting in greater preference for *B. lachnantha* (Odadi et al., 2013).

The interactive effects between cattle at both moderate and high stocking rates and wild mesoherbivores on understory 'leafiness' (leaf:stem) may be due to a combination of compensatory growth and differences in palatability between leaves and stems (Fig. 4b). The positive effect of cattle on understory leafiness was dampened where wild mesoherbivores were present. This suggests that herbivory of leaves (selected over stems due to greater palatability) by both wild and domestic animals begins to non-additively outweigh defoliation-enhanced leaf growth (McNaughton et al., 1983).

The interactions between cattle at high stocking rates and wild mesoherbivores in their effects on diversity (effective number of species and evenness; Fig. 5) may, in part, be driven by herbivory-induced suppression of dominance (Koerner et al., 2018) and increased light availability (Borer et al., 2014), both of which are important determinants of understory species diversity in grasslands globally. Similarly, for annual grasses (Fig. 4a), previous research

Accepted Article

suggests that such suppression of dominance can open up spaces that are subsequently colonised by non-dominant short-lived species such as annual grasses (Porensky et al., 2013; Fynn & O'Connor, 2001). Consequently, both diversity and annual grass cover may be influenced by the amount of bare ground. Cattle at high stocking rates increased bare ground non-additively where mesoherbivores were present (Fig. 3). This may have occurred because, beyond a certain threshold of bare ground, animals (domestic and/or wild) increase their preference for bare patches for locomotion, exacerbating trampling, and/or bare patches become more difficult for plants to colonise. Dominance itself may be expected to rise with total herbivory as unpalatable species replace palatable species (Vetter, 2005; Seymour et al., 2010). However, more research is needed to test these hypothetical underlying processes and the relative influence of each component.

#### *Implications for management*

Our findings echo those of other studies (Eldridge et al., 2016, 2018; Liu et al., 2015), highlighting the importance of considering the combined impacts of domestic and wild herbivores, their identities, and their interactions in shaping understory plant communities in mixed-use rangelands. Because understory community composition responded primarily to herbivore identity when high cattle stocking rates were included (Table 1), total herbivory by wild and domestic species may not be a useful predictor of herbaceous community composition when cattle densities are increased in mixed-use rangelands. Evidence of non-additive effects of cattle and large wild herbivores indicates that land managers must be mindful of interactive effects when adjusting cattle stocking rates. For example, in areas where wild mesoherbivores are present, increasing cattle stocking rates from moderate to high can lead to disproportionately

Accepted Article

lower understory leafiness (Fig. 4b) and more bare ground (Fig. 3). Similarly, non-linear responses of understory community composition to total herbivory (Fig. 1) indicate that the magnitude of the effect of increasing herbivore stocking rates depends on the existing level of herbivory.

When managing for understory diversity, increasing cattle stocking rates may increase or reduce diversity depending on the presence of large wild herbivores (Fig. 5). While diversity declined when cattle were stocked at high rates in the absence of large wild herbivores, the combination of large wild herbivores and cattle at high stocking rates led to reduced dominance and increased species diversity and evenness. However, the plant species that benefitted most from this herbivore combination were annual grasses, mirroring other studies (e.g., Porensky et al., 2013; Fynn & O'Connor, 2001). Compared to perennial grasses, annual grasses in this system are less palatable, are a more ephemeral forage resource, and are less capable of resisting water erosion (Riginos & Herrick, 2010). Ultimately, our results suggest that cattle should preferably be stocked at moderate rates in mixed-use rangelands not only to minimise direct negative impacts on large wild herbivores of conservation importance (Kimuyu et al., 2017), but also to avoid shifts in understory cover, community composition, forage quality, and soil erosion that are undesirable for both cattle production and conservation objectives. Importantly, our results support previous studies from this and other systems that suggest that moderate grazing by cattle does not cause effects that are unique or undesired by most land managers. However, there appears to be a threshold, between 2 and 10 kg hr m<sup>-2</sup> yr<sup>-1</sup> in our system (Appendix S1: Fig. S3), at which the unique effects of a single species (in this case cattle) manifest in the understory plant community.

## Acknowledgments

We thank Mpala Research Centre and its staff for logistical support. The KLEE plots were built and maintained by grants from the James Smithson Fund of the Smithsonian Institution (to A.P. Smith), The National Geographic Society (Grants 4691-91, 9106-12, and 9986-16), and the National Science Foundation (LTREB BSR 97-07477, 03-16402, 08-16453, 12-56004, 12-56034 and 19-31224). Funding for field equipment was received by H.B.M. Wells from The Rufford Foundation (Grant 27451-1) and the University of Leeds Centre for Climate's Climate Research Bursary Award. Additional financial support was provided through the Leeds Doctoral Scholarship to H.B.M. Wells. This research complies with the current laws of the country in which it was conducted (Kenya).

## Authors' contributions

HW, LS, AD and TY conceived and designed the methodology. HW collected and analysed the data and led the writing of the manuscript. KV, LP, CR, TY, LS, and AD contributed critically to the drafts. All authors approved publication. We declare no conflicts of interest.

## References

Ahmad, N. (1996). Occurrence and distribution of vertisols. In *Developments in soil science* (Vol. 24, pp. 1–41). Amsterdam, The Netherlands: Elsevier.

[https://doi.org/10.1016/S0166-2481\(96\)80003-1](https://doi.org/10.1016/S0166-2481(96)80003-1)

Allan, B. F., Tallis, H., Chaplin-Kramer, R., Hockett, S., Kowal, V. A., Musengezi, J., Okanga, S., Ostfeld, R. S., Schieltz, J., Warui, C. M., Wood, S. A., & Keesing, F. (2017). Can

integrating wildlife and livestock enhance ecosystem services in central Kenya? *Frontiers in Ecology and the Environment*, 15(6), 328–335. <https://doi.org/10.1002/fee.1501>

Bakker, E. S., Ritchie, E. M., Olf, H., Milchunas, D. G. & Knops, J. M. H. (2006). Herbivore impact on grassland plant diversity depends on habitat productivity and herbivore size. *Ecology Letters*, 9, 780–788. <https://doi.org/10.1111/j.1461-0248.2006.00925.x>

Bar-On, Y. M., Phillips, R., & Milo, R. (2018). The biomass distribution on Earth. *Proceedings of the National Academy of Sciences*, 115(25), 6506–6511. <https://doi.org/10.1073/pnas.1711842115>

Berger, W. H., & Parker, F. L. (1970). Diversity of planktonic foraminifera in deep-sea Sediments. *Science*, 168(3937), 1345–1347. <https://doi.org/10.1126/science.168.3937.1345>

Bestelmeyer, B. T., Okin, G. S., Duniway, M. C., Archer, S. R., Sayre, N. F., Williamson, J. C., & Herrick, J. E. (2015). Desertification, land use, and the transformation of the global drylands. *Frontiers in Ecology and the Environment*, 13(1), 28–36. <https://doi.org/10.1890/140162>

Borer, E. T., Seabloom, E. W., Gruner, D. S., Harpole, W. S., Hillebrand, H., Lind, E. M., Adler, P. B., Alberti, J., Anderson, T. M., Bakker, J. D., Biederman, L., Blumenthal, D., Brown, C. S., Brudvig, L. A., Buckley, Y. M., Cadotte, M., Chu, C., Cleland, E. E., Crawley, M. J., ... Yang, L. H. (2014). Herbivores and nutrients control grassland plant diversity via light limitation. *Nature*, 508(7497), 517–520. <https://doi.org/10.1038/nature13144>

Briske, D. D., Fuhlendorf, S. D., & Smeins, F. E. (2003). Vegetation dynamics on rangelands: a critique of the current paradigms. *Journal of Applied Ecology*, 40, 601–614. <https://doi.org/10.1046/j.1365-2664.2003.00837.x>

- Brooks, M. E., Kristensen, K., van Benthem, K. J., Magnusson, A., Berg, C. W., Nielsen, A., Skaug, H. J., Maechler, M., & Bolker, B. M. (2017). glmmTMB balances speed and flexibility among packages for zero-inflated generalized linear mixed. *The R Journal*, 9(2), 378-400. <https://journal.r-project.org/archive/2017/RJ-2017-066/index.html>
- Burkepile, D. E., Fynn, R. W. S., Thomson, D. I., Lemoine, N., Koerner, S. E., Eby, S., Hagenah, N., Wilcox, K. R., Collins, S. L., Kirkman, K. P., Knapp, A. K., & Smith, M. D. (2017). Herbivore size matters for productivity-richness relationships in African savannas. *Journal of Ecology*, 105, 674–686. <https://doi.org/10.1111/1365-2745.12714>
- Burns, C. E., Collins, S. L., & Smith, M. D. (2009). Plant community response to loss of large herbivores: Comparing consequences in a South African and a North American grassland. *Biodiversity and Conservation*, 18(9), 2327–2342. <https://doi.org/10.1007/s10531-009-9590-x>
- Charles, G. K., Porensky, L. M., Riginos, C., Veblen, K. E., & Young, T. P. (2017). Herbivore effects on productivity vary by guild: cattle increase mean productivity while wildlife reduce variability. *Ecological Applications*, 27(1), 143–155. <https://doi.org/10.1002/eap.1422>
- Cingolani, A. M., Noy-Meir, I., & Díaz, S. (2005). Grazing effects on rangeland diversity: a synthesis of contemporary models. *Ecological Applications*, 15(2), 757–773. <https://doi.org/10.1890/03-5272>
- Cingolani, A. M., Vaieretti, M. V., Giorgis, M. A., Poca, M., Tecco, P. A., & Gurvich, D. E. (2014). Can livestock grazing maintain landscape diversity and stability in an ecosystem that evolved with wild herbivores? *Perspectives in Plant Ecology, Evolution and Systematics*, 16(4), 143–153. <https://doi.org/10.1016/j.ppees.2014.04.002>

- Crego, R. D., Ogutu, J. O., Wells, H. B. M., Ojwang, G. O., Martins, D. J., Leimgruber, P., & Stabach, J. A. (2020). Spatiotemporal dynamics of wild herbivore species richness and occupancy across a savannah rangeland: implications for conservation. *Biological Conservation*, 242, 108436. <https://doi.org/10.1016/j.biocon.2020.108436>
- du Toit, J. T. D., & Cumming, D. H. M. (1999). Functional significance of ungulate diversity in African savannas and the ecological implications of the spread of pastoralism. *Biodiversity and Conservation*, 8, 1643-1661. <https://doi.org/10.1023/A:1008959721342>
- Dyksterhuis, E. J. (1949). Condition and management of rangelands based on quantitative ecology. *Journal of Range Management*, 2, 104–115. <https://doi.org/10.2307/3893680>
- Eldridge, D. J., Delgado-Baquerizo, M., Travers, S. K., Val, J., Oliver, I., Dorrough, J. W., & Soliveres, S. (2018). Livestock activity increases exotic plant richness, but wildlife increases native richness, with stronger effects under low productivity. *Journal of Applied Ecology*, 55(2), 766–776. <https://doi.org/10.1111/1365-2664.12995>
- Eldridge, D. J., Poore, A. G. B., Ruiz-Colmenero, M., Letnic, M., & Soliveres, S. (2016). Ecosystem structure, function, and composition in rangelands are negatively affected by livestock grazing. *Ecological Applications*, 26(4), 1273–1283. <https://doi.org/10.1890/15-1234>
- Frank, D. A., Wallen, R. L., & White, P. J. (2016). Ungulate control of grassland production: Grazing intensity and ungulate species composition in Yellowstone Park. *Ecosphere*, 7(11), e01603. <https://doi.org/10.1002/ecs2.1603>
- Fynn, R.W.S., & O'Connor, T.G. (2001). Effects of stocking rate and rainfall on rangeland dynamics and cattle performance in a semi-arid savanna, South Africa. *Journal of Applied Ecology*, 37, 491–507. <https://doi.org/10.1046/j.1365-2664.2000.00513.x>

- Goheen, J. R., Palmer, T. M., Charles, G. K., Helgen, K. M., Kinyua, S. N., Maclean, J. E., Turner, B. L., Young, H. S., & Pringle, R. M. (2013). Piecewise disassembly of a large-herbivore community across a rainfall gradient: The UHURU experiment. *PLoS ONE*, 8(2), e55192. <https://doi.org/10.1371/journal.pone.0055192>
- Hempson, G. P., Archibald, S., & Bond, W. J. (2017). The consequences of replacing wildlife with livestock in Africa. *Scientific Reports*, 7(1), 17196. <https://doi.org/10.1038/s41598-017-17348-4>
- Hui, F. K. C. (2016). BORAL—Bayesian Ordination and Regression Analysis of multivariate abundance data in R. *Methods in Ecology and Evolution*, 7(6), 744–750. <https://doi.org/10.1111/2041-210X.12514>
- Jost, L. (2007). Partitioning diversity into independent alpha and beta components. *Ecology*, 88(10), 2427–2439. <https://doi.org/10.1890/06-1736.1>
- Kartzinel, T. R., Chen, P. A., Coverdale, T. C., Erickson, D. L., Kress, W. J., Kuzmina, M. L., Rubenstein, D. I., Wang, W., & Pringle, R. M. (2015). DNA metabarcoding illuminates dietary niche partitioning by African large herbivores. *Proceedings of the National Academy of Sciences*, 112(26), 8019–8024. <https://doi.org/10.1073/pnas.1503283112>
- Koerner, S. E., Smith, M. D., Burkepille, D. E., Hanan, N. P., Avolio, M. L., Collins, S. L., Knapp, A. K., Lemoine, N. P., Forrestel, E. J., Eby, S., Thompson, D. I., Aguado-Santacruz, G. A., Anderson, J. P., Anderson, T. M., Angassa, A., Bagchi, S., Bakker, E. S., Bastin, G., Baur, L. E., ... Zelikova, T. J. (2018). Change in dominance determines herbivore effects on plant biodiversity. *Nature Ecology & Evolution*, 2(12), 1925–1932. <https://doi.org/10.1038/s41559-018-0696-y>

Landsberg, J., James, C. D., Maconochie, J., Nicholls, A. O., Stol, J., & Tynan, R. (2002). Scale-related effects of grazing on native plant communities in an arid rangeland region of South Australia. *Journal of Applied Ecology*, 39(3), 427–444.

<https://doi.org/10.1046/j.1365-2664.2002.00719.x>

Liu, J., Feng, C., Wang, D., Wang, L., Wilsey, B. J., & Zhong, Z. (2015). Impacts of grazing by different large herbivores in grassland depend on plant species diversity. *Journal of Applied Ecology*, 52, 1053–1062. <https://doi.org/10.1111/1365-2664.12456>

McNaughton, S. J., Wallace, L. L., & Coughenour, M. B. (1983). Plant adaptation in an ecosystem context: Effects of defoliation, Nitrogen, and water on growth of an African C4 sedge. *Ecology*, 64(2), 307–318. <https://doi.org/10.2307/1937078>

O'Connor, T. G., Kuyler, P., Kirkman, K. P., & Corcoran, B. (2010). Which grazing management practices are most appropriate for maintaining biodiversity in South African grassland? *African Journal of Range & Forage Science*, 27(2), 67–76.

<https://doi.org/10.2989/10220119.2010.502646>

Odadi, W. O., Kimuyu, D. M., Sensenig, R. L., Veblen, K. E., Riginos, C., & Young, T. P. (2017). Fire-induced negative nutritional outcomes for cattle when sharing habitat with native ungulates in an African savanna. *Journal of Applied Ecology*, 54(3), 935–944.

<https://doi.org/10.1111/1365-2664.12785>

Odadi, W. O., Abdulrazak, S. A., Karachi, M. M. & Young, T. P. (2013). Protein supplementation-driven shifts in forage selection by cattle: implications for cattle wildlife coexistence. *Ecological Applications*, 23, 455–463. <https://doi.org/10.1890/12-0878.1>

- Accepted Article
- Odadi, W. O., Karachi, M. K., Abdulrazak, S. A., & Young, T. P. (2011). African wild ungulates compete with or facilitate cattle depending on season. *Science*, 333, 1753–1755.  
<https://doi.org/10.1126/science.1208468>
- Olf, H., Ritchie, M. E., & Prins, H. H. T. (2002). Global environmental controls of diversity in large herbivores. *Nature*, 415(6874), 901–904. <https://doi.org/10.1038/415901a>
- Pakeman, R. J., Fielding, D. A., Everts, L., & Littlewood, N. A. (2019). Long-term impacts of changed grazing regimes on the vegetation of heterogeneous upland grasslands. *Journal of Applied Ecology*, 56(7), 1794–1805. <https://doi.org/10.1111/1365-2664.13420>
- Perevolotsky, A., & Seligman, N. G. (1998). Role of grazing in Mediterranean rangeland ecosystems. *BioScience*, 48(12), 1007–1017. <https://doi.org/10.2307/1313457>
- Porensky, L. M., Wittman, S. E., Riginos, C., & Young, T. P. (2013). Herbivory and drought interact to enhance spatial patterning and diversity in a savanna understory. *Oecologia*, 173(2), 591–602. <https://doi.org/10.1007/s00442-013-2637-4>
- Porensky, L. M., Mueller, K. E., Augustine, D. J., & Derner, J. D. (2016). Thresholds and gradients in a semiarid grassland: long-term grazing treatments induce slow, continuous, and reversible vegetation change. *Journal of Applied Ecology*, 53, 1013–1022.  
<https://doi.org/10.1111/1365-2664.12630>
- Pringle, R. M., Prior, K. M., Palmer, T. M., Young, T. P., & Goheen, J. R. (2016). Large herbivores promote habitat specialization and beta diversity of African savanna trees. *Ecology*, 97(10), 2640–2657. <https://doi.org/10.1002/ecy.1522>
- Quintero, C., & Bowers, D. B. (2013). Effects of insect herbivory on induced chemical defences and compensation during early plant development in *Penstemon virgatus*. *Annals of Botany*, 112, 661–669. <https://doi.org/10.1093/aob/mct011>

R Core Team (2019). *R: a language and environment for statistical computing*. R Foundation for Statistical Computing, Vienna, Austria

Riginos, C., & Herrick, E. J. (2010). *Monitoring rangeland health: A guide for pastoralist communities and other land managers in East Africa, version II*. Nairobi, Kenya: ELMT-USAID/East Africa.

Riginos, C., Porensky, L. M., Veblen, K. E., & Young, T. P. (2018). Herbivory and drought generate short-term stochasticity and long-term stability in a savanna understory community. *Ecological Applications*, 28(2), 323–335. <https://doi.org/10.1002/eap.1649>

Rueda, M., Rebollo, S., & García-Salgado, G. (2013). Contrasting impacts of different-sized herbivores on species richness of Mediterranean annual pastures differing in primary productivity. *Oecologia*, 172, 449–459. <https://doi.org/10.1007/s00442-012-2501-y>

Seymour, C. L., Milton, S. J., Joseph, G. S., Dean, W. R. J., Dithobolo, T., & Cumming, G. S. (2010). Twenty years of rest returns grazing potential, but not palatable plant diversity, to Karoo rangeland, South Africa: Recovery of arid rangelands over 20 years. *Journal of Applied Ecology*, 47(4), 859–867. <https://doi.org/10.1111/j.1365-2664.2010.01833.x>

Sitters, J. A., Kimuyu, D. M., Young, T. P., Claeys, P., & Olde Venterink, H. (2020). Negative effects of cattle on soil carbon and nutrient pools reversed by megaherbivores. *Nature Sustainability*, 3(5), 360–366. <https://doi.org/10.1038/s41893-020-0490-0>

Staver, A. C., Wigley-Coetsee, C., & Botha, J (2019). Grazer movements exacerbate grass declines during drought in an African savanna. *Journal of Ecology*, 107(3), 1482–1491. <https://doi.org/10.1111/1365-2745.13106>

Staver, A. C., & Bond, W. J. (2014). Is there a ‘browse trap’? Dynamics of herbivore impacts on trees and grasses in an African savanna. *Journal of Ecology*, 102(3), 595–602.

<https://doi.org/10.1111/1365-2745.12230>

Steinfeld, H., Gerber, P., Wassenaar, T., Castel, V., & de Haan, C. (2006). Livestock’s long shadow: environmental issues and options. Rome: Food and Agriculture Organisation of the United Nations (FAO).

Sundaresan, S. R., & Riginos, C. (2010). Lessons learned from biodiversity conservation in the private lands of Laikipia, Kenya. *Great Plains Research: A Journal of Natural and Social Sciences*, 20, 17–27. <https://digitalcommons.unl.edu/greatplainsresearch/1081>

Tóth, E., Deák, B., Valkó, O., Kelemen, A., Tamás, M., Tóthmérész, B., & Török, P. (2016).

Livestock type is more crucial than grazing intensity: traditional cattle and sheep grazing in short-grass steppes. *Land Degradation & Development*, 29, 231–239. <https://doi.org/10.1002/ldr.2514>

van der Plas, F., Howison, R. A., Mpanza, N., Cromsigt, J. P. G. M., & Olf, H. (2016).

Different-sized grazers have distinctive effects on plant functional composition of an African savannah. *Journal of Ecology*, 104(3), 864–875. <https://doi.org/10.1111/1365-2745.12549>

Veblen, K. E., Porensky, L. M., Riginos, C., & Young, T. P. (2016). Are cattle surrogate wildlife? Savanna plant community composition explained by total herbivory more than herbivore type. *Ecological Applications*, 26(6), 1610–1623. <https://doi.org/10.1890/15-1367.1>

Veblen, K. E., & Young, T. P. (2010). Contrasting effects of cattle and wildlife on the vegetation development of a savanna landscape mosaic: Cattle vs. wildlife effects on a savanna

mosaic. *Journal of Ecology*, 98(5), 993–1001. <https://doi.org/10.1111/j.1365-2745.2010.01705.x>

Vetter, S. (2005). Rangelands at equilibrium and non-equilibrium: recent developments in the debate. *Journal of Arid Environments*, 62, 321–342.

<https://doi.org/10.1016/j.jaridenv.2004.11.015>

Wells, H. B. M., Kirobi E. H., Chen, C. L., Winowiecki, L. A., Vågen, T.-G., Ahmad, M. N., Stringer, L. C., Dougill, A. J. (2021a). Equity in ecosystem restoration. *Restoration Ecology*, e13385. <https://doi.org/10.1111/rec.13385>

Wells, H. B. M., Kimuyu, D. M., Odadi, W. O., Dougill, A. J., Stringer, L. C., & Young, T. P. (2021b). Wild and domestic savanna herbivores increase smaller vertebrate diversity, but less than additively. *Journal of Applied Ecology*, 58, 953–963.

<https://doi.org/10.1111/1365-2664.13843>

Wells, H. B. M., Porensky, L. M., Veblen, K. E., Riginos, C., Stringer, L. C., Dougill, A. J., Namoni, M., Ekadeli, J., Young, T. P. (2021c) Data from: At high stocking rates, cattle do not functionally replace wild herbivores in shaping understory community composition. Figshare repository. <https://doi.org/10.6084/m9.figshare.16615888.v3>

Young, H. S., McCauley, D. J., Helgen, K. M., Goheen, J. R., Otárola-Castillo, E., Palmer, T. M., Pringle, R. M., Young, T. P., & Dirzo, R. (2013). Effects of mammalian herbivore declines on plant communities: Observations and experiments in an African savanna.

*Journal of Ecology*, 101(4), 1030–1041. <https://doi.org/10.1111/1365-2745.12096>

Young, T. P., Okello, B. D., Kinyua, D., & Palmer, T. M. (1997). KLEE: A long-term multi-species herbivore exclusion experiment in Laikipia, Kenya. *African Journal of Range & Forage Science*, 14(3), 94–102. <https://doi.org/10.1080/10220119.1997.9647929>

Young, T. P., Porensky, L. M., Riginos, C., Veblen, K. E., Odadi, W. O., Kimuyu, D. M., Charles, G. K., & Young, H. S. (2018). Relationships between cattle and biodiversity in multiuse landscape revealed by Kenya Long-Term Exclosure Experiment. *Rangeland Ecology & Management*, 71(3), 281–291. <https://doi.org/10.1016/j.rama.2018.01.005>

Accepted Article

TABLES

Table 1. Model selection comparing total herbivory and herbivore identity (presence/absence [P/A] of herbivore types) as predictors of herbaceous community composition (represented by the ordination axes, latent variables 1 and 2), species diversity metrics (effective number of species, evenness, and dominance), bare ground, total aerial cover, covers of annual/perennial grasses/forbs, and leafiness (measured by leaf-to-stem ratio). The ‘TH/ID’ column indicates whether total herbivory (TH) or herbivore identity (ID) was the more important predictor ( $\Delta AIC > 2$ );  $n=81$ .

Variable	Model	df	AIC	TH/ID
Latent variable 1	$\sim \text{cattle}(P/A) \times \text{mega}(P/A) + \text{cattle}(P/A) \times \text{meso}(P/A) + (1 \text{year/block})$	9	55.2	ID
(primary ordination axis)	$\sim \text{cattle}(P/A) + \text{mega}(P/A) + \text{meso}(P/A) + (1 \text{year/block})$	7	66.9	
	$\sim \text{poly}(\text{total herbivory}, 2) + (1 \text{year/block})$	6	116.3	
Latent variable 2	$\sim \text{total herbivory} + (1 \text{year/block})$	5	99.5	TH
(secondary ordination axis)	$\sim \text{cattle}(P/A) + \text{mega}(P/A) + \text{meso}(P/A) + (1 \text{year/block})$	7	123.9	
	$\sim \text{cattle}(P/A) \times \text{mega}(P/A) + \text{cattle}(P/A) \times \text{meso}(P/A) + (1 \text{year/block})$	9	125.0	
Bare ground	$\sim \text{total herbivory} + (1 \text{year/block})$	5	472.6	TH
	$\sim \text{cattle}(P/A) + \text{mega}(P/A) + \text{meso}(P/A) + (1 \text{year/block})$	9	493.1	
	$\sim \text{cattle}(P/A) \times \text{mega}(P/A) + \text{cattle}(P/A) \times \text{meso}(P/A) + (1 \text{year/block})$	7	493.3	
Total cover	$\sim \text{cattle}(P/A) + \text{mega}(P/A) + \text{meso}(P/A) + (1 \text{year/block})$	7	690.5	ID
	$\sim \text{cattle}(P/A) \times \text{mega}(P/A) + \text{cattle}(P/A) \times \text{meso}(P/A) + (1 \text{year/block})$	9	691.4	
	$\sim \text{poly}(\text{total herbivory}, 2) + (1 \text{year/block})$	6	693.5	
Annual forbs absolute cover	$\sim \text{total herbivory} + (1 \text{year/block})$	5	131.6	TH
	$\sim \text{cattle}(P/A) + \text{mega}(P/A) + \text{meso}(P/A) + (1 \text{year/block})$	7	141.2	
	$\sim \text{cattle}(P/A) \times \text{mega}(P/A) + \text{cattle}(P/A) \times \text{meso}(P/A) + (1 \text{year/block})$	9	144.5	
Annual grasses absolute cover	$\sim \text{cattle}(P/A) + \text{mega}(P/A) + \text{meso}(P/A) + (1 \text{year/block})$	7	238.5	ID
	$\sim \text{cattle}(P/A) \times \text{mega}(P/A) + \text{cattle}(P/A) \times \text{meso}(P/A) + (1 \text{year/block})$	9	238.1	
	$\sim \text{total herbivory} + (1 \text{year/block})$	5	241.2	

Perennial forbs	$\sim poly(total\ herbivory, 2) + (I year/block)$	6	242.4	TH
absolute cover	$\sim cattle(P/A) \times mega(P/A) + cattle(P/A) \times meso(P/A) + (I year/block)$	9	256.4	
	$\sim cattle(P/A) + mega(P/A) + meso(P/A) + (I year/block)$	7	268.9	
Perennial grasses	$\sim total\ herbivory + (I year/block)$	5	162.3	TH
absolute cover	$\sim cattle(P/A) \times mega(P/A) + cattle(P/A) \times meso(P/A) + (I year/block)$	9	164.5	
	$\sim cattle(P/A) + mega(P/A) + meso(P/A) + (I year/block)$	7	165.0	
Leafiness (leaf-to-stem ratio)	$\sim poly(total\ herbivory, 2) + (I year/block)$	6	349.2	TH
	$\sim cattle(P/A) \times mega(P/A) + cattle(P/A) \times meso(P/A) + (I year/block)$	9	358.2	
	$\sim cattle(P/A) + mega(P/A) + meso(P/A) + (I year/block)$	7	366.7	
Effective number of species	$\sim cattle(P/A) \times mega(P/A) + cattle(P/A) \times meso(P/A) + (I year/block)$	9	278.8	ID
	$\sim cattle(P/A) + mega(P/A) + meso(P/A) + (I year/block)$	7	284.9	
	$\sim poly(total\ herbivory, 2) + (I year/block)$	6	289.6	
Evenness	$\sim poly(total\ herbivory, 2) + (I year/block)$	6	-204.4	TH
	$\sim cattle(P/A) \times mega(P/A) + cattle(P/A) \times meso(P/A) + (I year/block)$	9	-158.2	
	$\sim cattle(P/A) + mega(P/A) + meso(P/A) + (I year/block)$	7	-155.3	
Dominance	$\sim cattle(P/A) \times mega(P/A) + cattle(P/A) \times meso(P/A) + (I year/block)$	9	584.1	ID
	$\sim total\ herbivory + (I year/block)$	5	594.1	
	$\sim cattle(P/A) + mega(P/A) + meso(P/A) + (I year/block)$	7	601.0	

---

## FIGURE LEGENDS

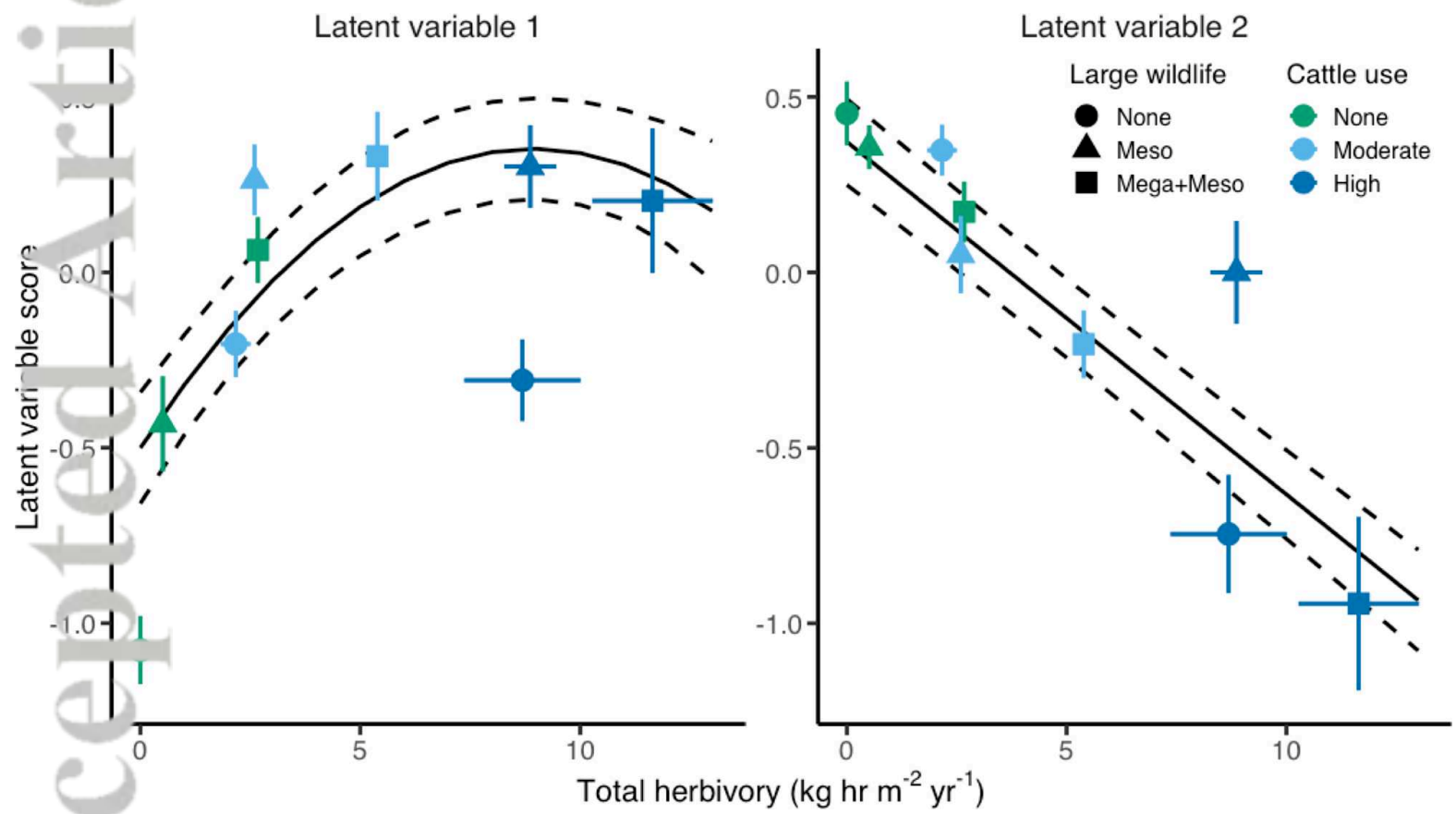
Figure 1. Responses of understory herbaceous community composition represented by latent variable model ordination axes 1 and 2. Regressions of ordination axes on total herbivory (means  $\pm 1$  SE). Fitted means (solid lines) and standard errors (dashed lines) of linear mixed models ( $n=81$ ). ‘Meso’=accessible to wild mesoherbivores (50-1000 kg); ‘Mega’=accessible to megaherbivores (elephant, giraffe); ‘None’=no wild mesoherbivores/megaherbivores.

Figure 2. Biplots of understory herbaceous community composition represented by latent variable model ordination axes 1 and 2. Treatments responses (**a**) and latent variable coefficients for species (smaller points) and life history and life form groups (**b**; larger points; means  $\pm 1$  SE). ‘Meso’=accessible to wild mesoherbivores (50-1000 kg); ‘Mega’=accessible to megaherbivores (elephant, giraffe); ‘None’=no wild mesoherbivores/megaherbivores. Only species with coefficients  $>|1|$  for either latent variable are shown. BraEru=*Brachiaria eruciformis*, CorcSp=*Corchorus* sp., DigMil=*Digitaria milaniana*, DinRet=*Dinebra retroflexa*, EraTen=*Eragrostis tenuifolia*, EragSp=*Eragrostis* sp., EvoAls=*Evolvulus alsinoides*, HelGlu=*Helichrysum (Pseudognaphalium) glumaceum*, HibFla=*Hibiscus flavifolius*, HibTri=*H. trionum*, IndBre=*Indigofera brevicalyx*, JusDic=*Justicia diclipteroides*, MonAng=*Monsonia angustifolia*, PanAtr=*Panicum atosanguineum*, PelAlc=*Pelargonium alchemilloides*, PleSpp=*Plectranthus* spp., RhyHol=*Rhynchosia holstii*, SpoFes=*Sporobolus festivus*, TraBer=*Tragus bertonianus*.

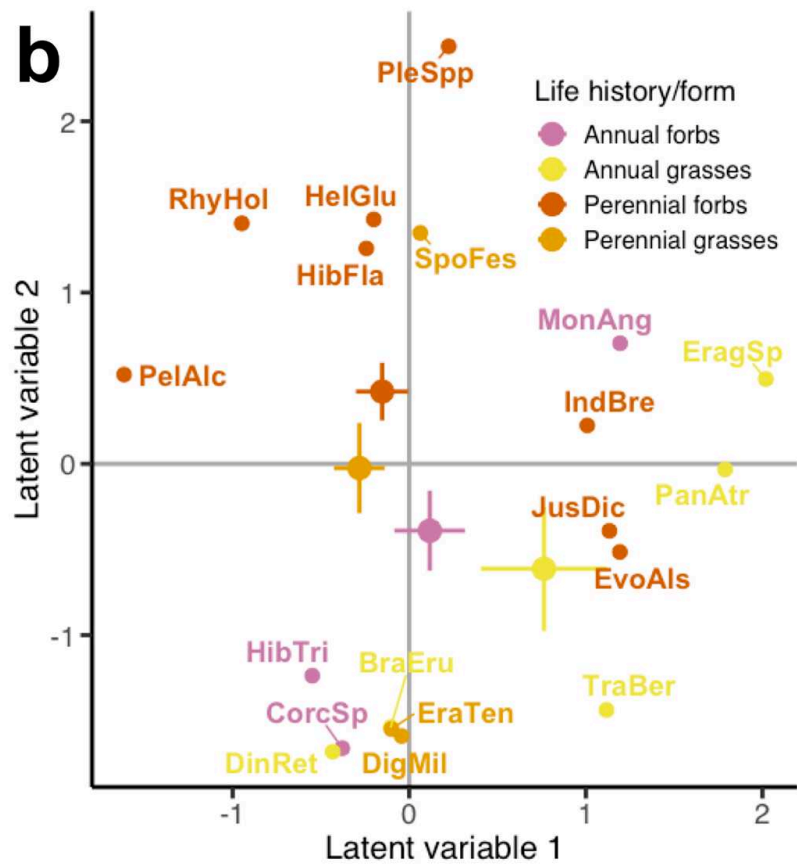
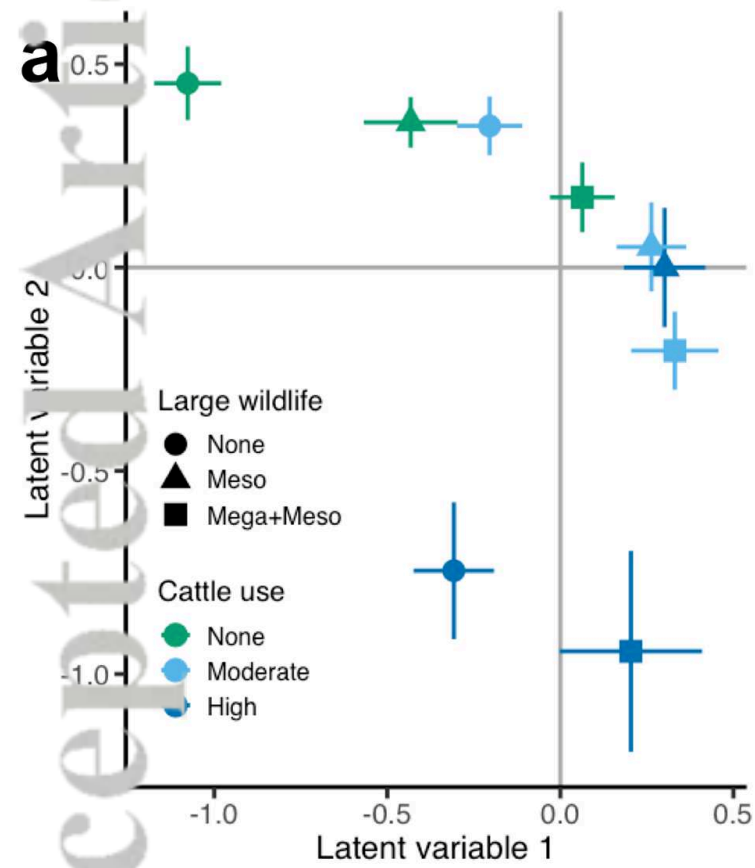
Figure 3. Responses of total herbaceous cover and bare ground to treatments and total herbivory (means  $\pm 1$  SE). Fitted means (solid lines) and standard errors (dashed lines) of linear mixed models ( $n=81$ ). ‘Meso’=accessible to wild mesoherbivores (50-1000 kg); ‘Mega’=accessible to megaherbivores (elephant, giraffe); ‘None’=no wild mesoherbivores/megaherbivores.

Figure 4. Relationships between total herbivory and both herbaceous cover and ‘leafiness’ (measured by leaf:stem) of understory plants. Regressions of the absolute covers of annual forbs, annual grasses, perennial forbs, perennial grasses (**a**), and leaf:stem (**b**) on total herbivory (means  $\pm 1$  SE). Fitted means (solid lines) and standard errors (dashed lines) of linear mixed models ( $n=81$ ). ‘Meso’=accessible to wild mesoherbivores (50-1000 kg); ‘Mega’=accessible to megaherbivores (elephant, giraffe); ‘None’=no wild mesoherbivores/megaherbivores.

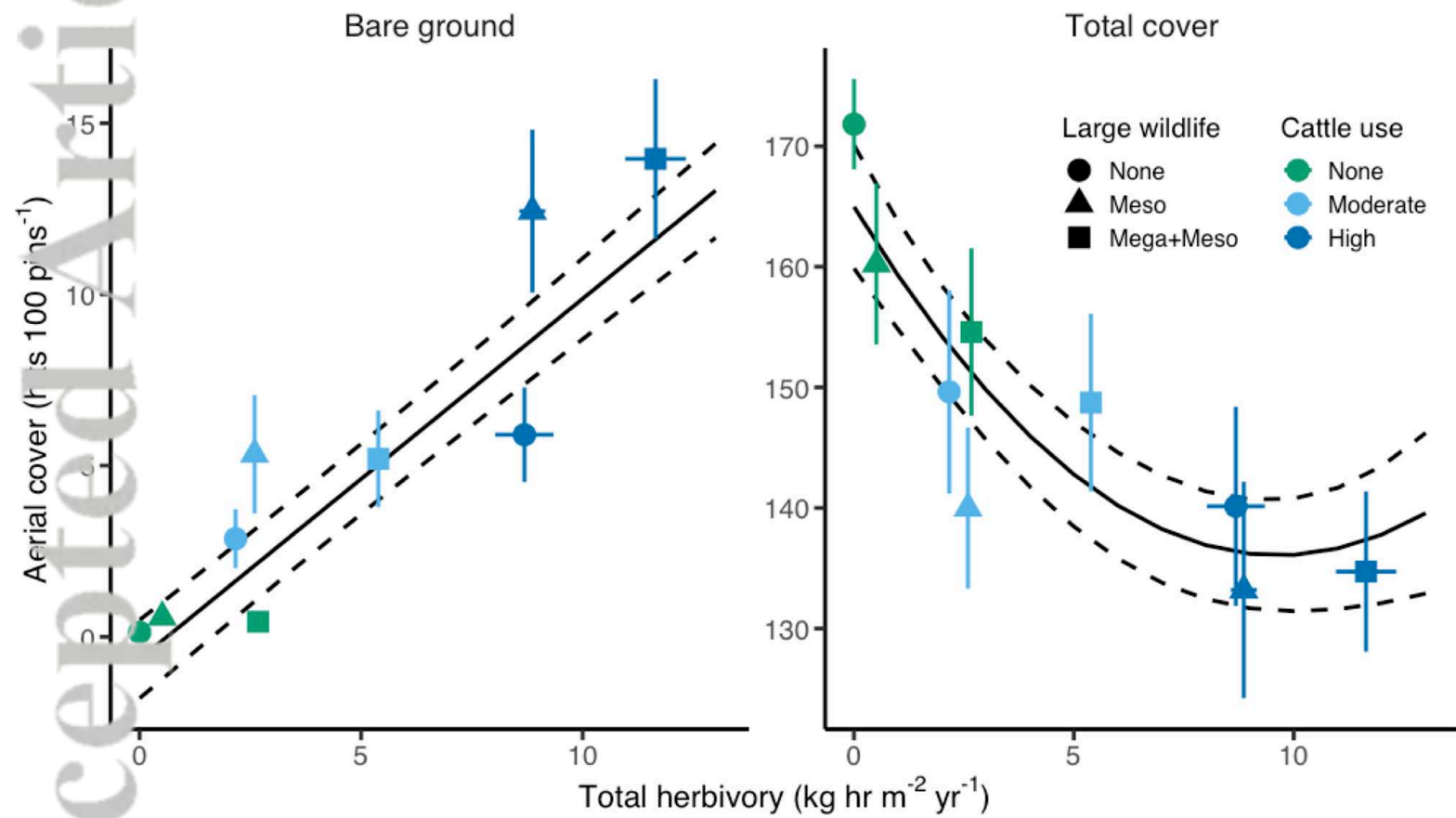
Figure 5. Treatment responses and regressions on total herbivory for diversity (**a-b**), and Berger-Parker dominance (**c**; means  $\pm 1$  SE). Fitted means (solid lines) and standard errors (dashed lines) of linear mixed models ( $n=81$ ). ‘Meso’=accessible to wild mesoherbivores (50-1000 kg); ‘Mega’=accessible to megaherbivores (elephant, giraffe); ‘None’=no wild mesoherbivores/megaherbivores.



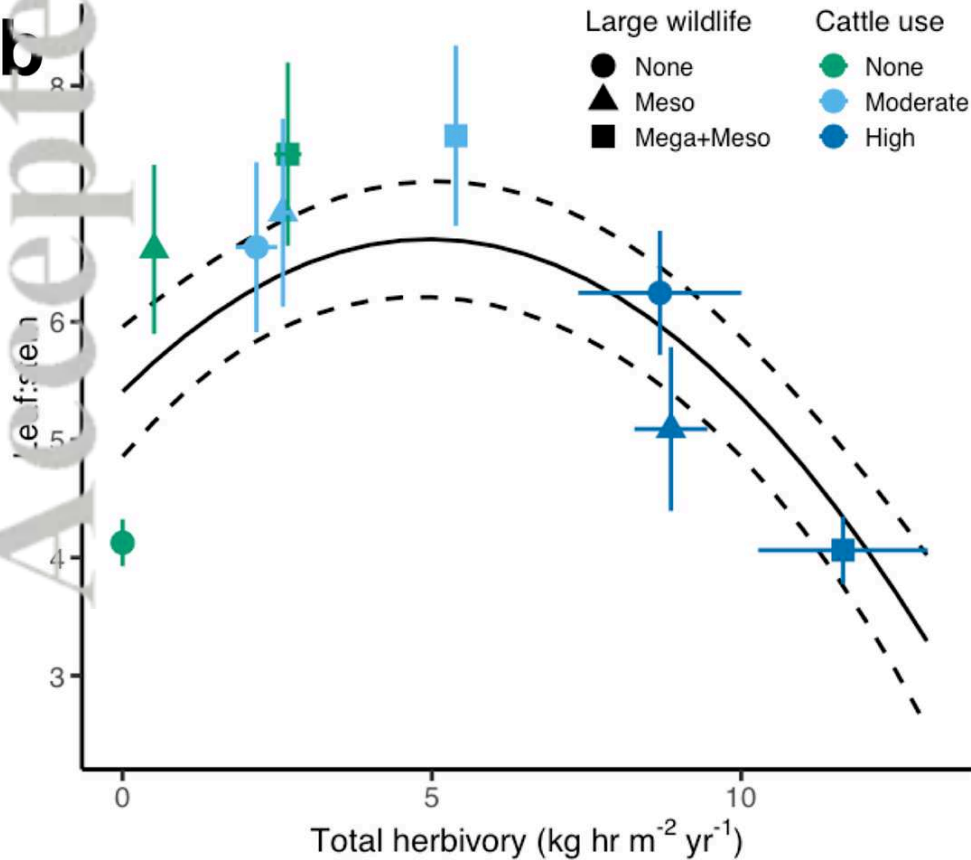
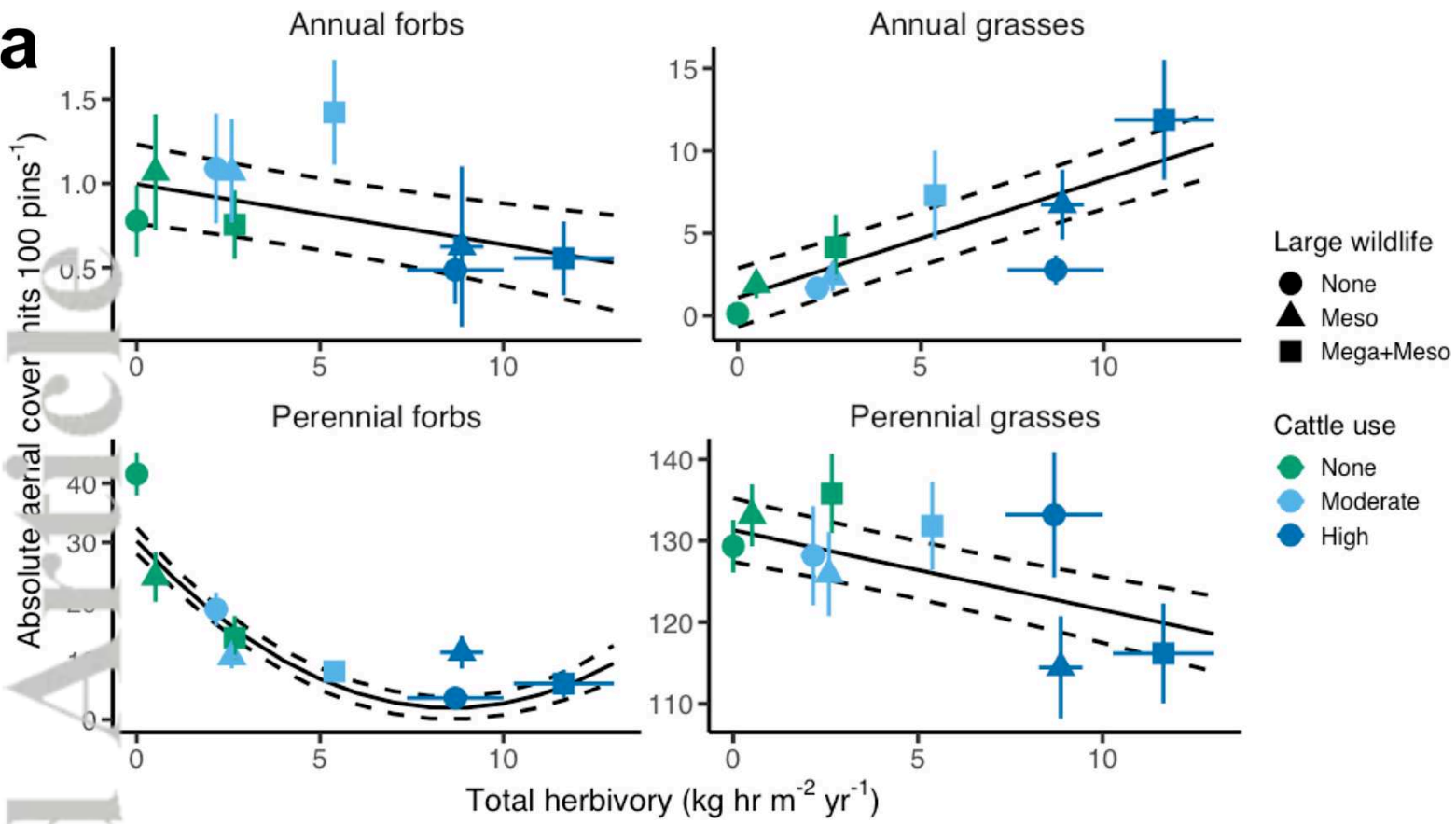
EAP\_2520\_Fig1.png



EAP\_2520\_Fig2.png



EAP\_2520\_Fig3.png

**a**

EAP\_2520\_Fig4.png

