



UNIVERSITY OF LEEDS

This is a repository copy of *Progressive development of ocean anoxia in the end-Permian pelagic Panthalassa*.

White Rose Research Online URL for this paper:

<https://eprints.whiterose.ac.uk/178489/>

Version: Supplemental Material

Article:

Takahashi, S, Hori, RS, Yamakita, S et al. (9 more authors) (2021) Progressive development of ocean anoxia in the end-Permian pelagic Panthalassa. *Global and Planetary Change*, 207. 103650. ISSN 0921-8181

<https://doi.org/10.1016/j.gloplacha.2021.103650>

© 2021 Published by Elsevier B.V. This is an author produced version of an article published in *Global and Planetary Change*. Uploaded in accordance with the publisher's self-archiving policy. This manuscript version is made available under the CC-BY-NC-ND 4.0 license <http://creativecommons.org/licenses/by-nc-nd/4.0/>.

Reuse

This article is distributed under the terms of the Creative Commons Attribution-NonCommercial-NoDerivs (CC BY-NC-ND) licence. This licence only allows you to download this work and share it with others as long as you credit the authors, but you can't change the article in any way or use it commercially. More information and the full terms of the licence here: <https://creativecommons.org/licenses/>

Takedown

If you consider content in White Rose Research Online to be in breach of UK law, please notify us by emailing eprints@whiterose.ac.uk including the URL of the record and the reason for the withdrawal request.



eprints@whiterose.ac.uk
<https://eprints.whiterose.ac.uk/>

Figure 1

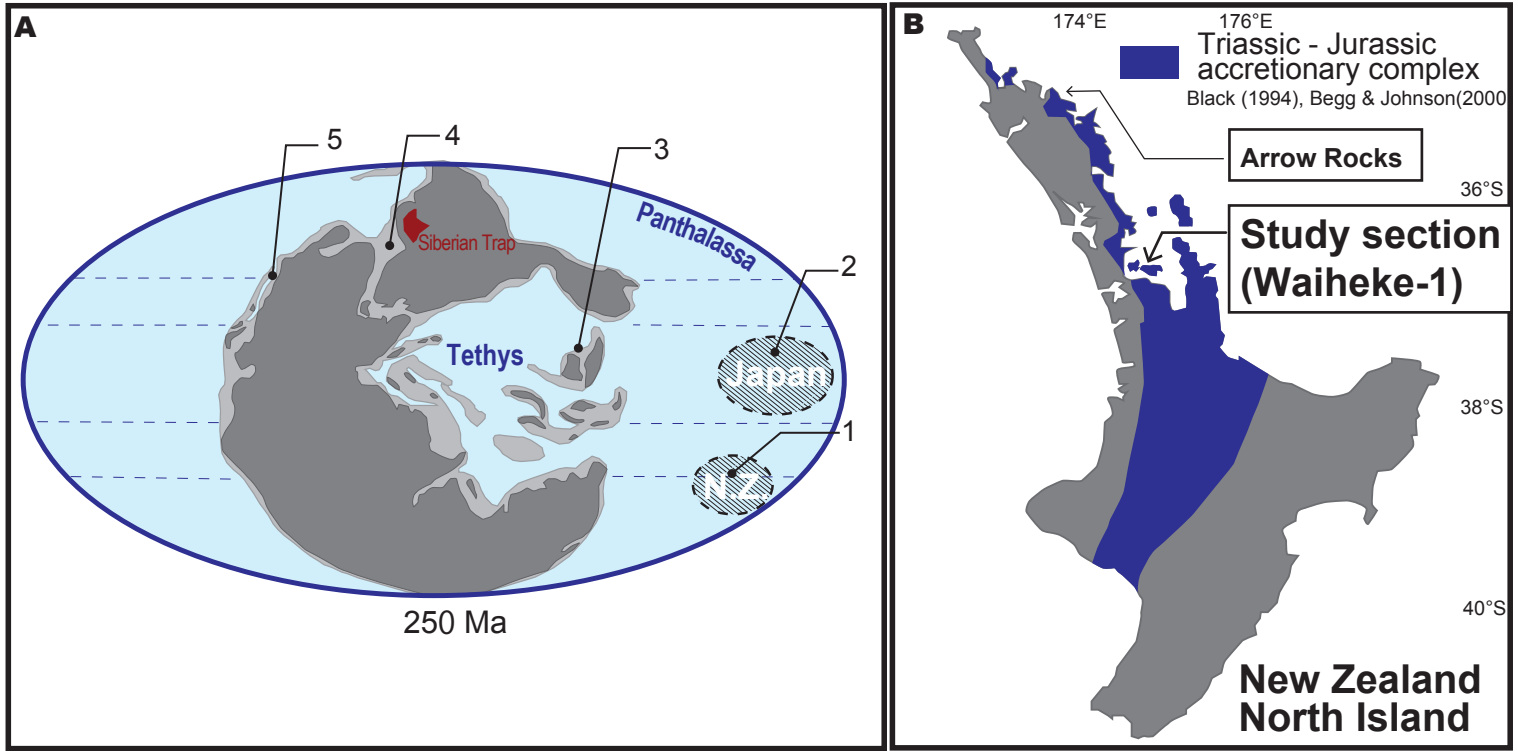


Figure 3

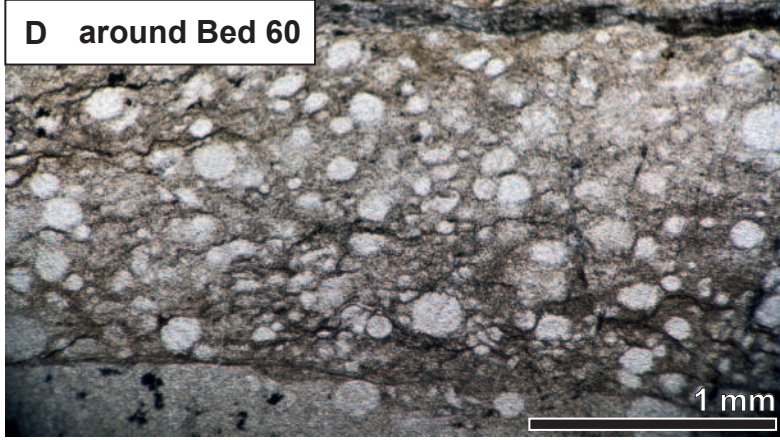
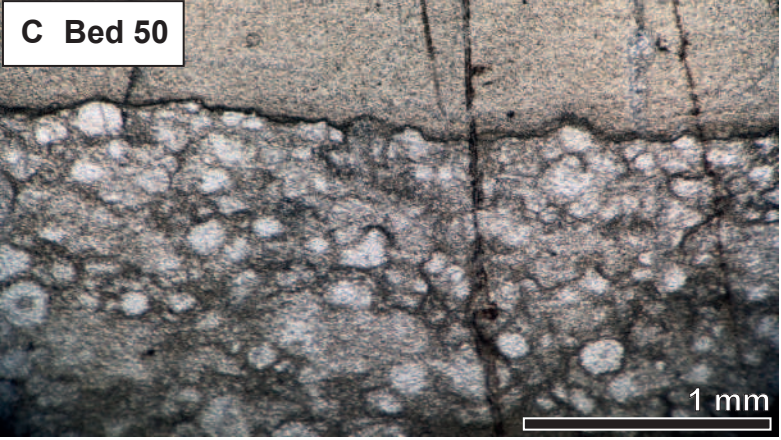
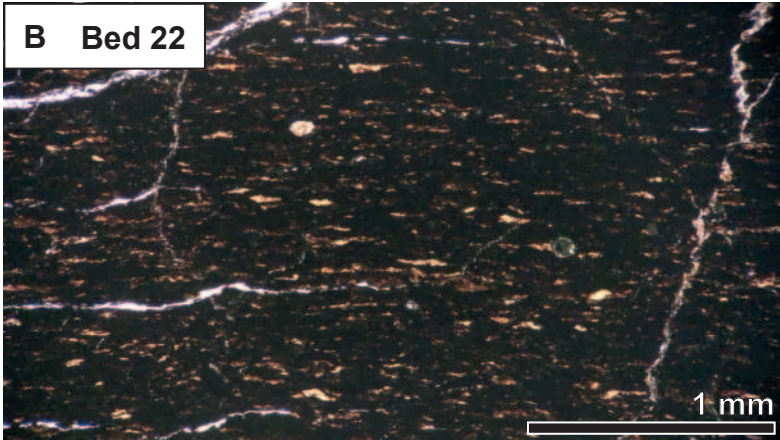
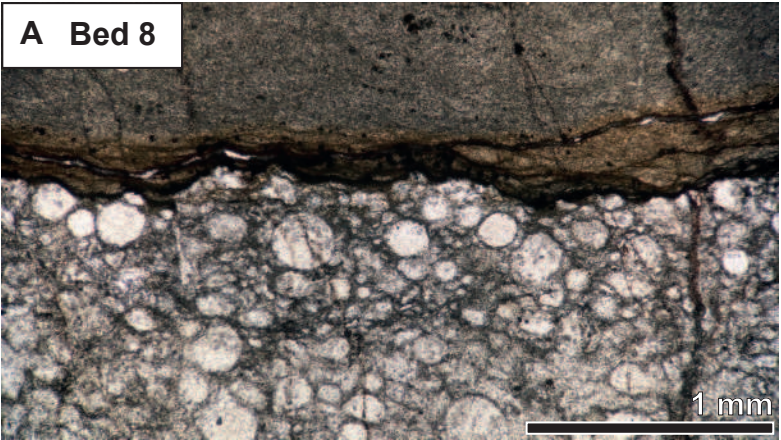


Figure 4

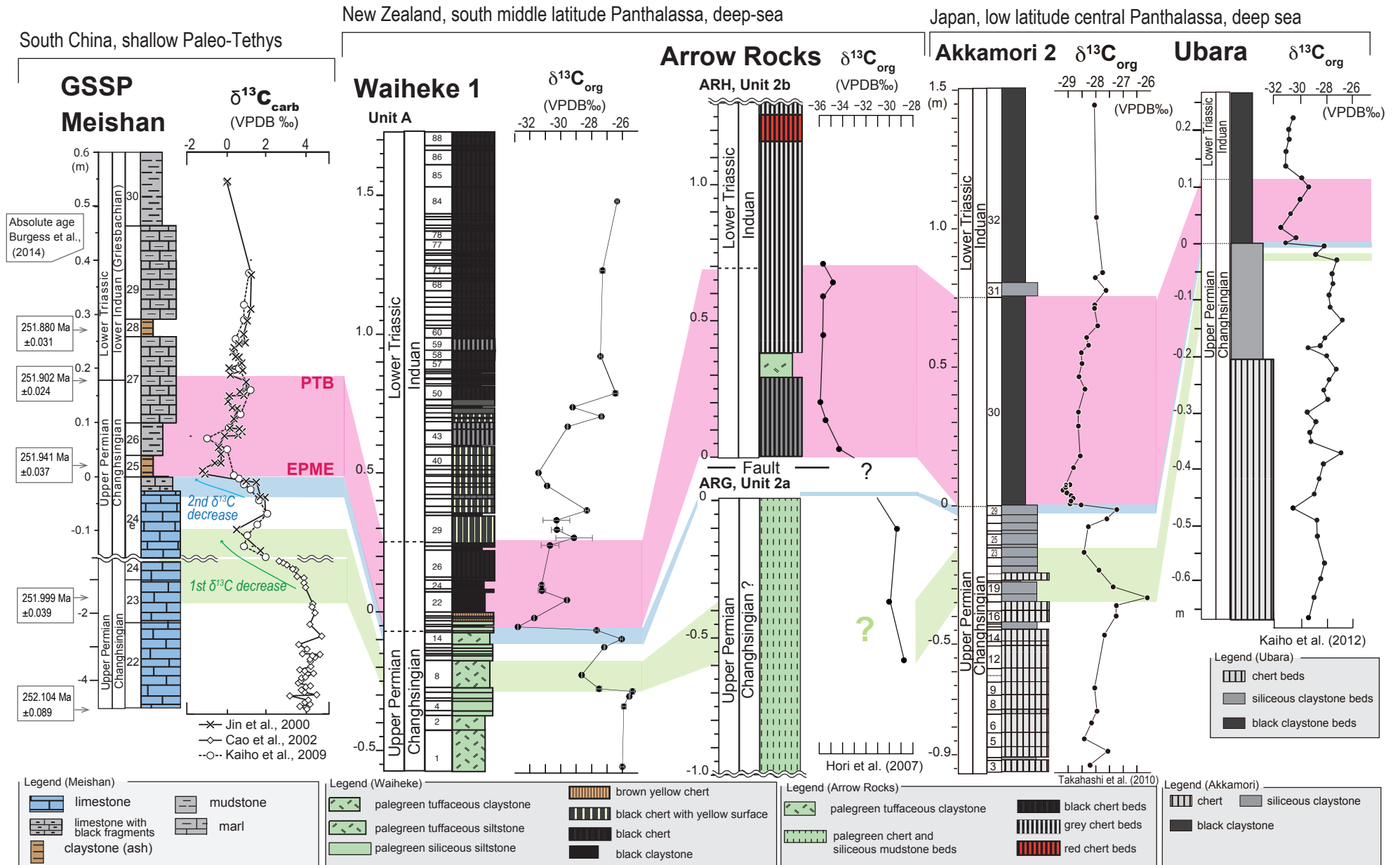


Figure 5

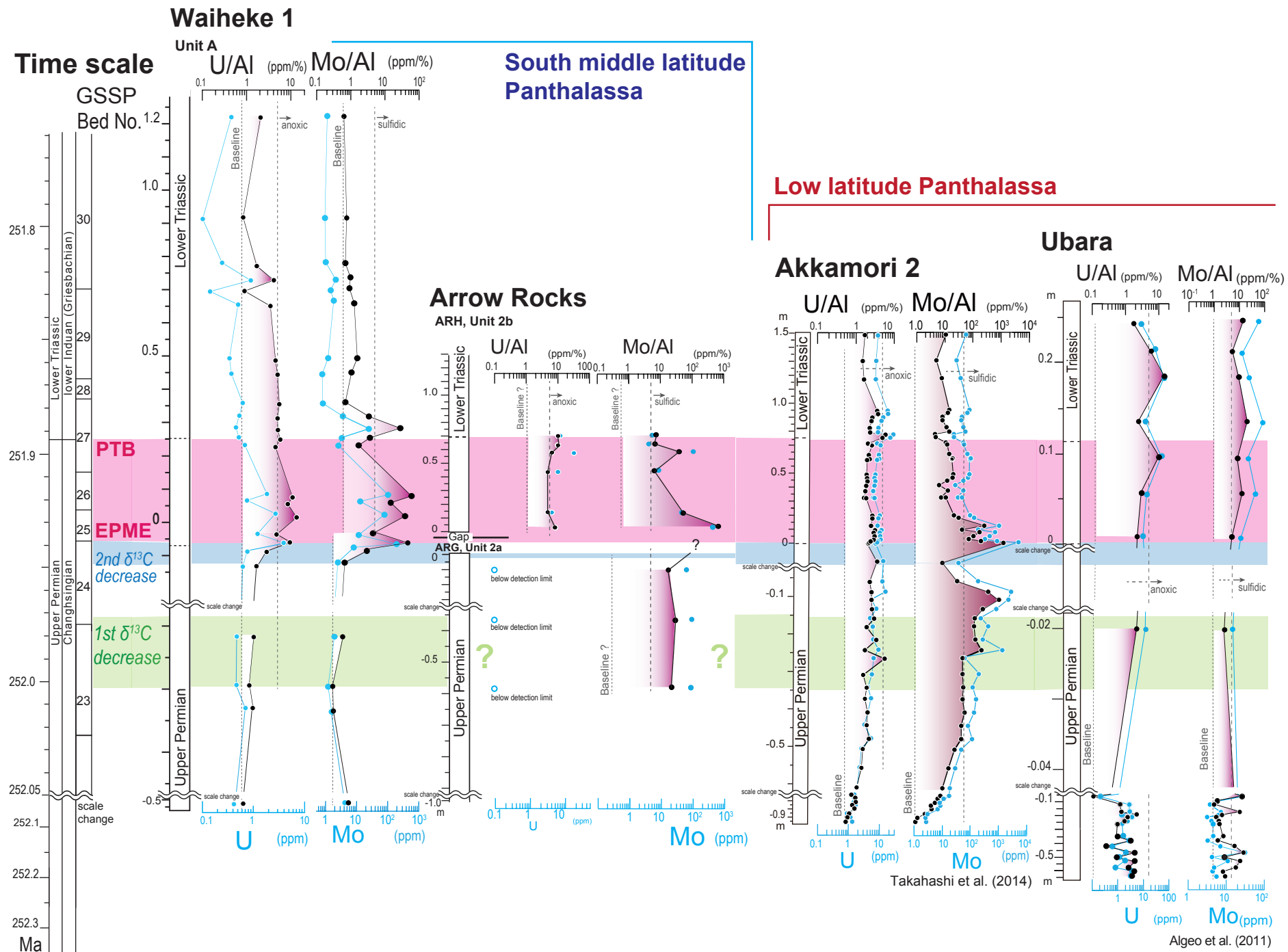
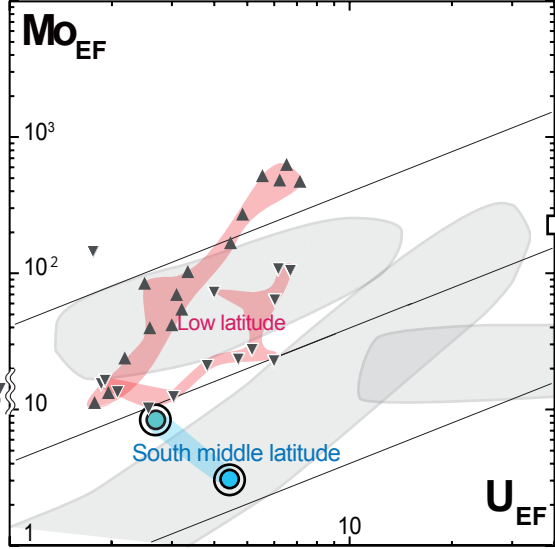
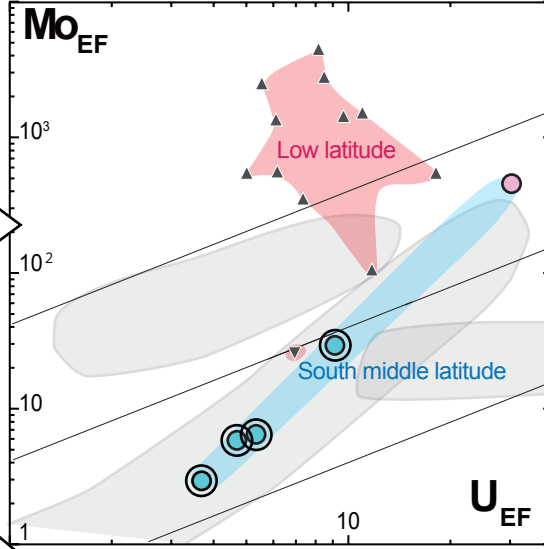


Figure 6

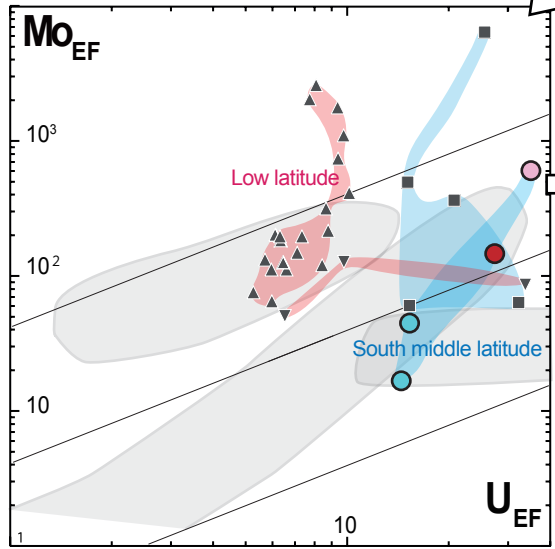
1. Late Permian before the $\delta^{13}\text{C}$ decreases



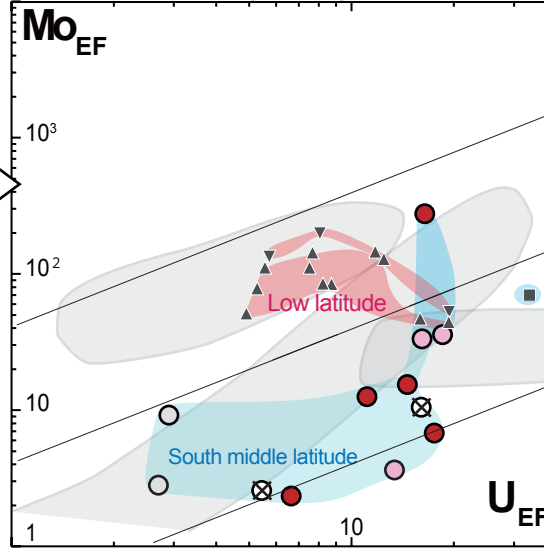
2. Between the 1st and 2nd step decreases of $\delta^{13}\text{C}$ in the latest Permian



3. The interval from EPME to PTB



4. Earliest Triassic (Induan)



South middle latitude

Waiheke 1

$\text{Fe}_{\text{pyrite}}^* / \text{Fe}_{\text{HR}}$

- >0.8
- >0.6-0.8
- >0.0-0.6

⊗ Fe < 0.5 %

○ $\text{Fe}_{\text{HR}} / \text{Fe}_{\text{total}} < 0.4$

⊙ tuffaceous sediments

Arrow rocks

■ (Hori et al., 2007)

Low latitude

Akkamori-2

▲ (Takahashi et al., 2014)

Ubara

▼ (Algeo et al., 2011)

Model of enrichment pattern

(Algeo and Tribouillard, 2009; Tribouillard et al., 2012)

Figure 7

