



This is a repository copy of *On the tuning of plateaus in atmospheric and oceanic 14C records to derive calendar chronologies of deep-sea cores and records of 14C marine reservoir age changes.*

White Rose Research Online URL for this paper:
<https://eprints.whiterose.ac.uk/177542/>

Version: Published Version

Article:

Bard, E. and Heaton, T.J. orcid.org/0000-0002-9994-142X (2021) On the tuning of plateaus in atmospheric and oceanic 14C records to derive calendar chronologies of deep-sea cores and records of 14C marine reservoir age changes. *Climate of the Past*, 17 (4). pp. 1701-1725. ISSN 1814-9324

<https://doi.org/10.5194/cp-17-1701-2021>

Reuse

This article is distributed under the terms of the Creative Commons Attribution (CC BY) licence. This licence allows you to distribute, remix, tweak, and build upon the work, even commercially, as long as you credit the authors for the original work. More information and the full terms of the licence here:
<https://creativecommons.org/licenses/>

Takedown

If you consider content in White Rose Research Online to be in breach of UK law, please notify us by emailing eprints@whiterose.ac.uk including the URL of the record and the reason for the withdrawal request.



eprints@whiterose.ac.uk
<https://eprints.whiterose.ac.uk/>



On the tuning of plateaus in atmospheric and oceanic ^{14}C records to derive calendar chronologies of deep-sea cores and records of ^{14}C marine reservoir age changes

Edouard Bard¹ and Timothy J. Heaton²

¹CEREGE, Aix-Marseille University, CNRS, IRD, INRAE, Collège de France, Technopôle de l'Arbois, Aix-en-Provence, France

²School of Mathematics and Statistics, University of Sheffield, Sheffield S3 7RH, UK

Correspondence: Edouard Bard (bard@cerge.fr)

Received: 23 December 2020 – Discussion started: 8 January 2021

Revised: 16 June 2021 – Accepted: 8 July 2021 – Published: 16 August 2021

Abstract. We assess the methodology of the so-called ^{14}C plateau tuning (PT) technique used to date marine sediment records and determine ^{14}C marine reservoir ages (MRAs) as recently reviewed by Sarnthein et al. (2020).

The main identified problems are linked to the assumption of constant MRA during ^{14}C age plateaus; the lack of consideration of foraminifera abundance changes coupled to bioturbation that can create spurious plateaus in marine sediments; the assumption that plateaus have the same shapes and durations in atmospheric and oceanic records; the implication that atmospheric $^{14}\text{C}/^{12}\text{C}$ peaked instantaneously from one plateau to the next; that the ^{14}C plateaus represent 82 % of the total time spent between 14 000 and 29 000 cal yr BP, whereas during the remaining 18 % of the time, the radiocarbon clock was running almost 5 times faster than the radioactive decay; that the sparsity, combined with the level of analytical uncertainties and additional noise, in both atmospheric and marine data do not currently allow one to reliably or robustly identify plateaus (should they exist) beyond 15 000 cal yr BP; and that the determination and identification of plateaus in the deep-sea cores is reliant upon significant changes in sedimentation rate within those marine sediments which are, a priori, unknown and are not verified with an independent method.

The concerns we raise are supported and strengthened with carbon cycle box model experiments and statistical simulations of pseudo-atmospheric and pseudo-marine records, allowing us to question the ability to identify and tune ^{14}C age plateaus in the context of noisy and sparse data.

1 Introduction

Sarnthein et al. (2020) review the results of a technique based on tuning hypothesized ^{14}C age plateaus that they inferred in deep-sea sediment cores with those that they have proposed as existing in atmospheric radiocarbon archives, notably using the Lake Suigetsu record (Bronk Ramsey et al., 2012, 2020). The proposed outcomes of the so-called “plateau tuning” (PT) are to establish accurate and precise calendar age scales of the marine sediments and, at the same time, to determine the ^{14}C marine reservoir ages (MRAs) at the sea surface (for ^{14}C measured on planktonic foraminifera) and ventilation ages of deeper water masses (using ^{14}C measured on benthic foraminifera).

Sarnthein et al. (2020) review the results obtained by PT published over the last 13 years by the Kiel group (Sarnthein et al., 2007, 2011, 2013, 2015; Balmer et al., 2016; Sarnthein and Werner, 2017; Balmer and Sarnthein, 2018; Küssner et al., 2018). By comparing the records from many locations, the authors conclude in Sect. 2.2 that the ^{14}C age plateaus beyond 15 000 cal yr BP “show little coherence” with independent ^{10}Be records based on polar ice cores and therefore that the cause of these ^{14}C anomalies may not be linked to cosmogenic production changes.

The authors thus propose that extremely large and variable ventilation ages may be the causes of these ^{14}C age plateaus, constituting the fingerprint of abrupt reversals of deep ocean circulation and abrupt release or drawdown of CO_2 into or from the atmosphere. Nevertheless, the authors admit that

“ocean models still poorly reproduce” their reconstruction of deep ocean circulation and carbon cycle changes. They claim that this mismatch is due to model deficiencies in spatial resolution and tuning with reference data.

We have strong reservations about the appropriateness of the PT technique and consequently also the reliability of the results obtained in Sarnthein et al. (2020). The PT technique, proposed and used by the same authors from Kiel for more than 13 years, has not been checked and replicated independently by other groups. Outside the Kiel group, only Umling and Thunell (2017) have used the PT technique, but they found rather puzzling results (see more in Sect. 2.4). PT has been presented on several occasions during International Radiocarbon Conferences and workshops of the IntCal group, but it has never been adopted as a viable technique to reconstruct past ^{14}C variations (Reimer et al., 2020; Heaton et al., 2020a; and previous IntCal iterations by Reimer et al., 2009, 2013).

The review paper by Sarnthein et al. (2020) only compiles previous papers by the same group. The risk is to mislead readers into thinking that the PT technique is now firmly established. Indeed, the compiled records based on PT lead to perplexing outcomes (no coherence with either production changes or with ocean modeling results). This failure is linked to the inherent pitfalls listed below, which are not treated adequately in Sarnthein et al. (2020) or in former papers by the same group.

With this extended comment, our objective is to expose and discuss openly some of the inherent problems linked to PT. We split our discussion into two sections. Firstly, we present our concerns from a geoscientific perspective. Secondly, we provide our statistical concerns with the proposed PT method and provide illustrative examples that highlight its intrinsic difficulties.

2 Paleoclimatic and paleoceanographic perspective

2.1 PT and ^{14}C wiggle matching

The PT principle is reminiscent of the “ ^{14}C wiggle matching technique” used to refine the dating of large pieces of wood with multiple ^{14}C analyses over a tree-ring sequence of at least a few decades (Bronk Ramsey et al., 2001). However, Sarnthein et al. (2020) propose to do this with ocean sediments, which are not annually laminated, and to obtain calendar chronologies accurate and precise at the “decadal-to-centennial” level mentioned in their Sect. 1.1. However, there is no independent constraint on the sedimentation rate variations in these ocean cores (without annual varves). Indeed, sedimentation rate changes linked to climatic–oceanographic events (e.g., Dansgaard–Oeschger and Heinrich events) or more local sedimentological causes could also create ^{14}C age plateaus.

PT is not always restricted to the tuning of a single plateau but is often used to tune a suite of ^{14}C age plateaus. However,

one cannot reliably PT if one cannot reliably identify and define an individual ^{14}C plateau. A suite of plateaus does not necessarily add strength – in fact it potentially makes it more challenging should one miss or simply mismatch plateaus in either the atmospheric target or the sediment record. Moreover, the possible existence of spurious plateaus further complicates PT (see more below).

2.2 PT and marine reservoir ages

In addition to determining the calendar chronology of ocean sediments, PT is also used to calculate, at the same time, a variable offset with the atmospheric ^{14}C curve. The offset for planktonic foraminifera is often very large (1000–2000 ^{14}C yr) and is interpreted as being due to ^{14}C reservoir age changes at the sea surface. However, in order to perform PT the authors are required to assume that the marine ^{14}C reservoir age (MRA) is strictly constant during the age plateaus, which represent 82 % of the total time spent between 14 000 and 29 000 cal yr BP. This assumption of reservoir age stability during ^{14}C age plateaus is antithetical with the conclusion that these plateaus are linked to carbon cycle changes. Such significant carbon cycle changes would have left their imprint in ^{14}C records (Bard, 1988), maybe even as ^{14}C age plateaus solely recorded in marine sediments. Hence, the ^{14}C structures identified by Sarnthein et al. (2020) in pelagic sediments are severely under-constrained in ^{14}C and calendar ages.

Indeed, changes in marine ^{14}C reservoir age may either mask (or create false) ^{14}C age plateaus in the marine core, causing issues with tuning to the atmospheric plateaus. On the one hand, a decrease in MRA coinciding with an atmospheric ^{14}C age plateau (i.e., a decrease in atmospheric $\Delta^{14}\text{C}$) may create a set of marine ^{14}C observations lacking any plateau. On the other hand, an increase in MRA may make a period where the atmospheric ^{14}C record does not plateau (e.g., constant atmospheric $\Delta^{14}\text{C}$) appear as a plateau in marine ^{14}C observations. In both of these instances, PT will fail. Unless MRAs only change at the boundary times of their chosen plateau, identifying whether a potential plateau in a set of marine observations should be tuned to an atmospheric plateau is potentially confounded by the very changes to MRA the authors report.

2.3 Plateaus in Suigetsu and IntCal20 records

Sarnthein et al. (2020) refer to their hypothesized Lake Suigetsu-based ^{14}C calibration curve as a “rung ladder” that provides the basis of PT. Actually, the series of ^{14}C age plateaus hypothesized by Sarnthein et al. (2020) resembles a “staircase” more than a “rung ladder”. In Fig. 1, we have created a Lake Suigetsu-only calibration curve using the same Bayesian statistical method used for IntCal20 (Heaton et al., 2020b; Reimer et al., 2020) but constructed based only upon the observations from Lake Suigetsu with its updated cal-

endar age timescale (Bronk Ramsey et al., 2020). Figure 1 shows the Lake Suigetsu ^{14}C data and the resulting Suigetsu-only radiocarbon calibration curve for the period beyond the last 14 000 cal yr BP (14 cal kyr BP), i.e., where continuous high-precision data on tree-rings are not currently available. Superimposed horizontal lines indicate the 15 hypothesized atmospheric ^{14}C age plateaus of Sarnthein et al. (2020), with their numbering as listed in their Table 1. Figure 2 is equivalent to Fig. 1 but compares the Sarnthein ^{14}C age plateaus directly with the IntCal20 calibration curve (Reimer et al., 2020). In addition to Lake Suigetsu, the IntCal20 curve uses (atmosphere-adjusted) ^{14}C determinations from speleothems, lacustrine and marine sediments, and corals, as well as some ^{14}C determinations obtained from floating tree-ring sequences. Besides the well-known plateau no. 1 corresponding to the beginning of the Bölling period, evidence for many of the older plateaus hypothesized by Sarnthein et al. (2020) is dubious. They are not replicated in either our statistically robust Lake Suigetsu-only curve (Fig. 1) or the IntCal20 curve (Fig. 2). The weak evidence for many of these hypothesized ^{14}C age plateaus is further detailed in Sect. 3.2.

By focusing only on the plateaus, Sarnthein et al. (2020) overlook the implication that in their model ^{14}C ages must jump, often instantaneously, from one plateau to the next (i.e., like in a staircase as shown in Figs. 1 and 2). This is particularly true for five steps between 10 plateaus (10b to 10a, 9 to 8, 6b to 6a, 5b to 5a, and 2b to 2a) for which the calendar gaps correspond to 0 cal yr, but the atmospheric ^{14}C ages drops by between 340 and 750 ^{14}C yr. Five other steps (between 10 plateaus: 11 to 10b, 8 to 7, 7 to 6b, 6a to 5b, and 5a to 4) also have minimal calendar durations (70 to 170 cal yr) but show large ^{14}C drops ranging from 660 to 1380 ^{14}C yr. Consequently, the total duration of ^{14}C plateaus represent 82 % of the time spent between 14 and 29 cal kyr BP, whereas during the remaining 18 % of the time, the radiocarbon clock (i.e., the pace at which the ^{14}C age changes compared with true calendar time) was running almost 5 times faster than radioactive decay. The implication of the hypothetical staircase shape of Sarnthein et al. (2020)'s proposed atmospheric calibration curve is that radiocarbon would have never behaved as a geochronometer driven by regular radioactive decay.

It is useful to convert Figs. 1 and 2 from ^{14}C age into $\Delta^{14}\text{C}$ in order to assess the implications of these vertical steps. This is done in Fig. 3, which shows that ^{14}C age plateaus are transformed into triangular $\Delta^{14}\text{C}$ wiggles. The consequence of abrupt ^{14}C age drops between ^{14}C age plateaus is that most of these $\Delta^{14}\text{C}$ wiggles exhibit instantaneous rises ranging in size from 50 ‰ to 250 ‰.

There is no known mechanism that could be responsible for such abrupt and large asymmetric wiggles of the atmospheric $\Delta^{14}\text{C}$. Instantaneous ^{14}C production increases, which result in about 4 times the average production in a year, were discovered recently (Miyake et al., 2012; Mekhaldi et al., 2015). However, the size of these spikes attributed to extreme solar particle events is an order of mag-

nitude smaller in terms of $\Delta^{14}\text{C}$ than that required to explain the jumps between the hypothesized ^{14}C age plateaus of Sarnthein et al. (2020). Furthermore, there is no evidence of huge corresponding spikes in the ice core ^{10}Be record (Adolphi et al., 2018). In addition, the impacts of abrupt changes of the geomagnetic field were found to be negligible on the production of ^{14}C (Fournier et al., 2015). Finally, it is unlikely that abrupt changes of the carbon cycle are responsible for such large, frequent, and very abrupt $\Delta^{14}\text{C}$ spikes. For example, switching down the deep ocean circulation instantaneously in a carbon cycle box model leads to a rather slow and limited $\Delta^{14}\text{C}$ rise in the atmosphere over several centuries (see, e.g., Fig. 4b by Goslar et al., 1995, or Fig. 5 by Hughen et al., 1998; see also simulations performed with more complex models by Marchal et al., 2001; Delaygue et al., 2003; Ritz et al., 2008; Singarayer et al., 2008). Consequently, the assumption which is required to underpin PT, i.e., that the radiocarbon calibration curve has the shape of a staircase, is in conflict with our basic understanding of ^{14}C as a tracer.

2.4 Marine datasets used for PT

Unfortunately, the Sarnthein et al. (2020) review paper fails to show a single figure illustrating oceanic ^{14}C records with their plateaus compared and tuned with the proposed atmospheric calibration ^{14}C curve. It is thus necessary to dig into the literature to see the marine core records: Figs. 3 and 4 in Sarnthein et al. (2007) for cores SO17940, MD01-2416, ODP893A, and PS2644; Fig. 2 in Sarnthein et al. (2011) for core MD01-2378; Figs. 3 to 13 in Sarnthein et al. (2015) for cores GIK23074, PS2644, MD08-3180, ODP1002, MD01-2378, GIK17940, SO50-37, MD01-2416, MD02-2489, ODP893A, and MD02-2503; Fig. S1a, b, c, d in Balmer et al. (2016) for cores GeoB1711-4, GeoB3910-1, KNR-159-5-36GGC, and MD07-3076; Fig. 4 in Sarnthein and Werner (2017) for cores GIK23258, MSM5/5-712, and T88-2; Fig. 2 in Balmer and Sarnthein (2018) for core MD08-3180; and Fig. 4 in Küssner et al. (2018) for core PS75-104-1.

Looking at these graphs is absolutely crucial to assess the poor quality of the determination of ^{14}C age plateaus in these ocean cores and their tuning to the atmospheric ^{14}C calibration curve. This is particularly important as the PT implies sedimentation rates that vary by up to a factor of 5 to 8 within a single core (e.g., cores PS2644 and MD08-3180 in Sarnthein et al., 2015; PS75/104-1 in Küssner et al., 2018) and even much more, by orders of magnitude, in other cores from the Nordic Seas (Sarnthein and Werner, 2017).

The proposed PT criterion, which considers only the average sedimentation rate over a complete core (e.g., $> 10 \text{ cm kyr}^{-1}$) is not sufficient to ensure reliability in the PT approach. Rather it is the profile and range of sedimentation rate within a sediment core that is most critical, as these internal relative changes determine the identification of the

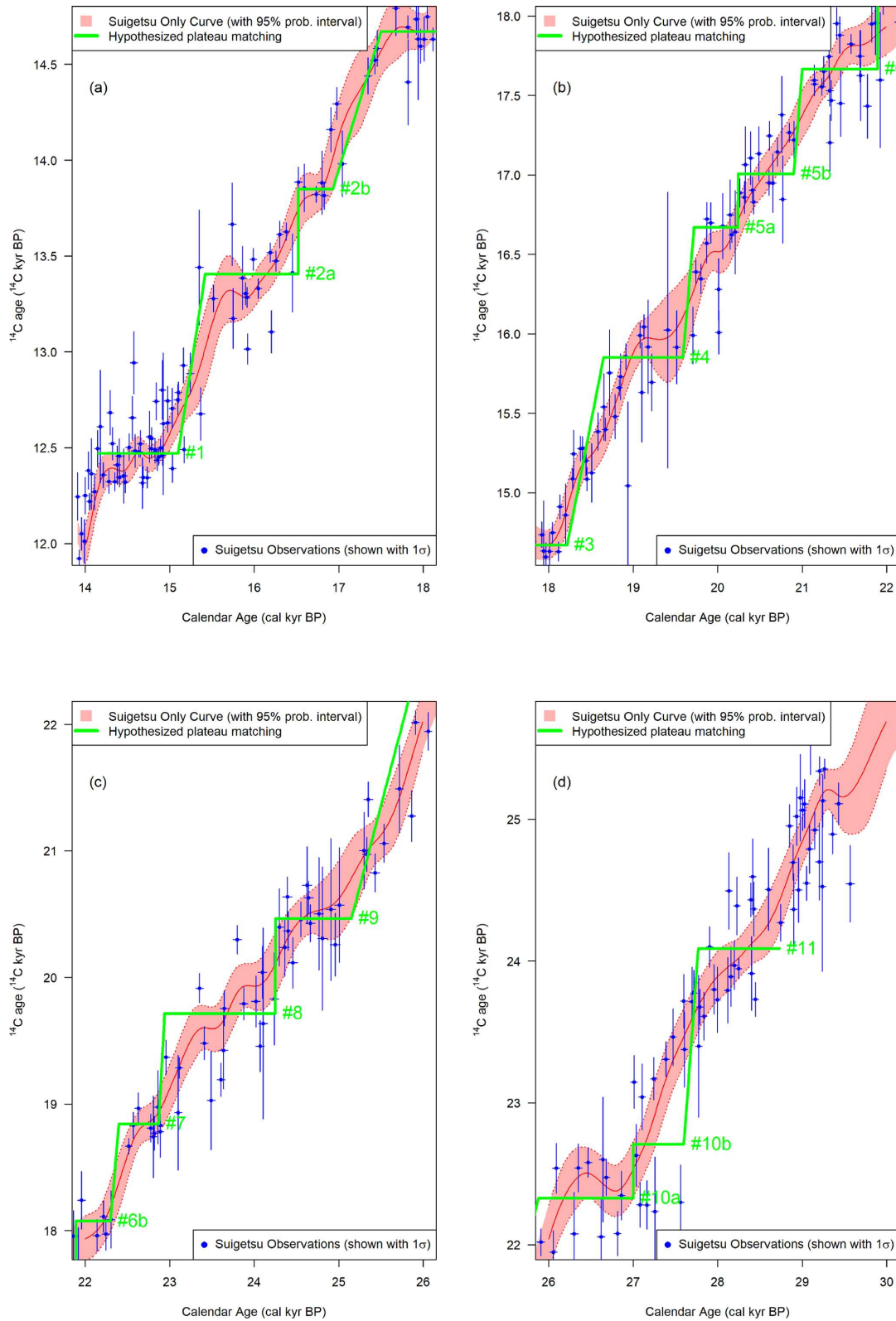


Figure 1. Blue dots show the Lake Suigetsu ^{14}C data with their 1σ analytical uncertainties in both radiocarbon and calendar age (Bronk Ramsey et al., 2020). The thin solid red line shows the pointwise posterior mean of a radiocarbon calibration curve constructed using the same Bayesian statistical method as IntCal20 (Heaton et al., 2020b; Reimer et al., 2020) but based only on the Suigetsu ^{14}C data. The accompanying shaded interval represents the 95 % posterior predictive probability interval. Superimposed thick green lines indicate the 15 atmospheric plateaus with their numbering as listed in Table 1 of Sarin et al. (2020).

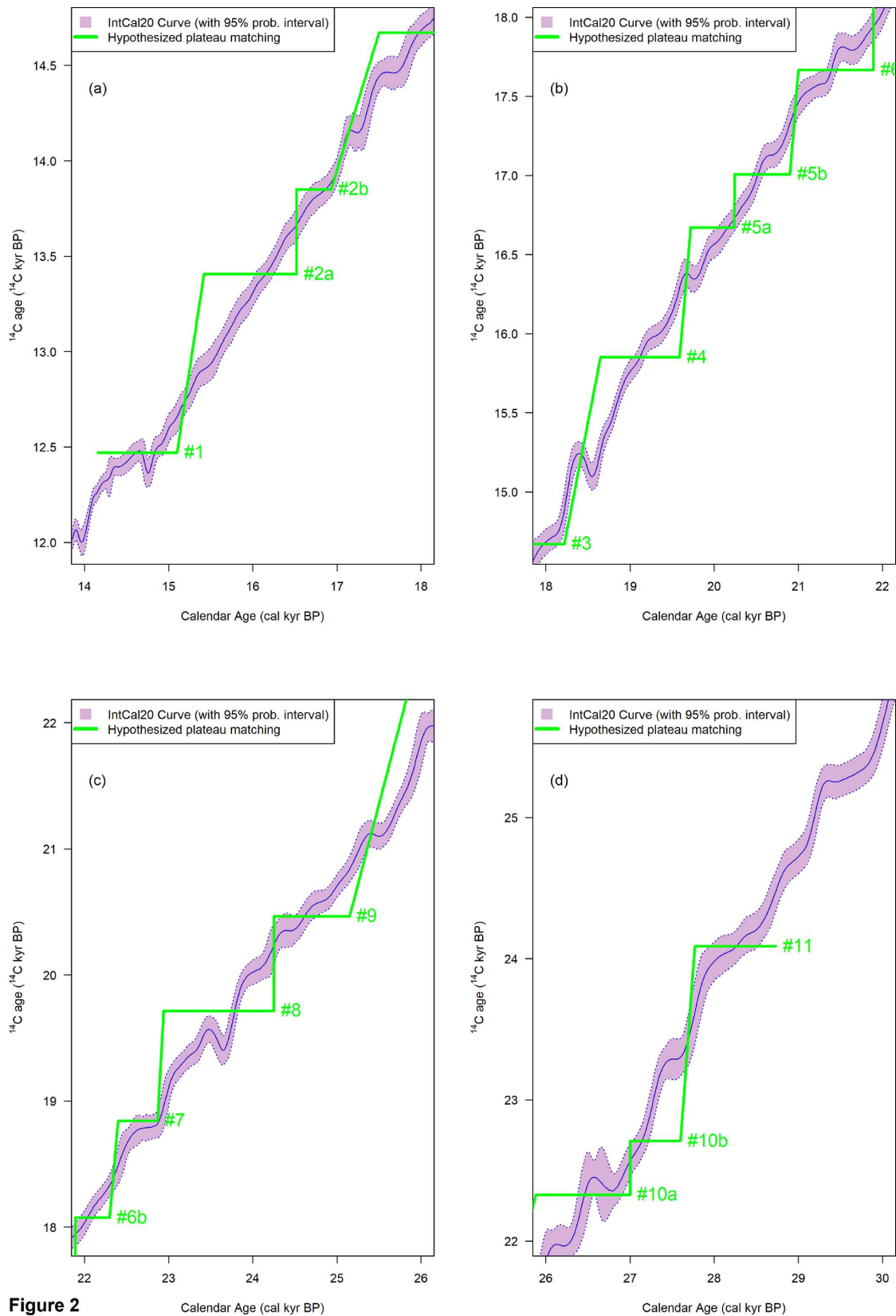


Figure 2

Figure 2. The thin solid purple line shows the pointwise posterior mean of the IntCal20 curve, with the shaded interval representing the 95 % posterior predictive probability interval (Reimer et al., 2020; Heaton et al., 2020b). Superimposed thick green lines indicate the 15 atmospheric plateaus with their numbering as listed in Table 1 of Sarthain et al. (2020).

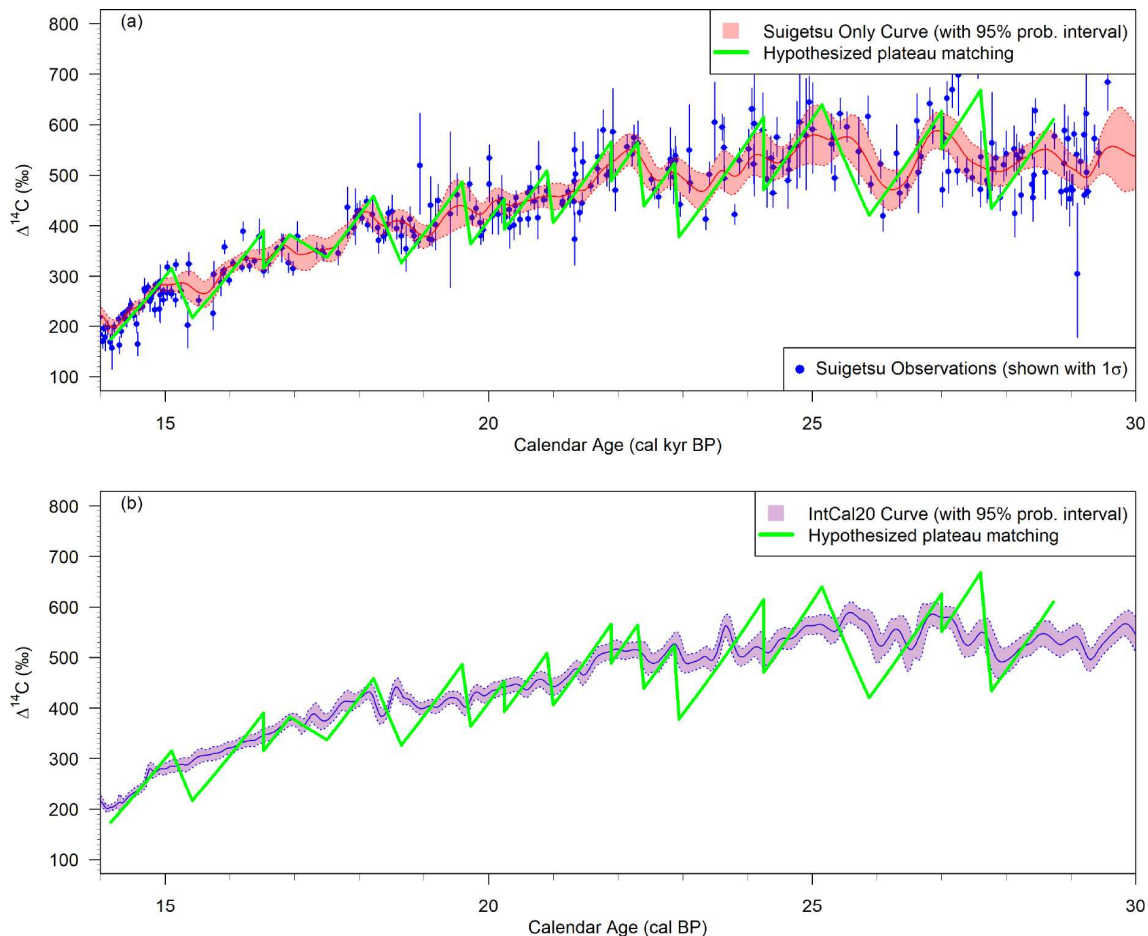


Figure 3. The two panels represent the same data shown in Figs. 1 and 2 but converted into $\Delta^{14}\text{C}$ with units in ‰. Short (or zero) gaps between plateaus are transformed into abrupt rises. Age plateaus correspond to the second parts of these atmospheric $\Delta^{14}\text{C}$ wiggles, during which the $\Delta^{14}\text{C}$ decrease compensates the radioactive decay.

plateaus in the absence of calendar age information. This also applies to the impact of bioturbation since the smoothing and phasing effects are directly related to the ratio between the bioturbation depth and the sedimentation rate (this ratio being the average residence time of foraminifera in the bioturbation zone, e.g., Bard et al., 1987).

In their Supplement, Sarnthein et al. (2020) provide summary figures for 18 individual deep-sea cores, showing the final reconstructions of surface and deep reservoir ages versus time for each core. However, these graphs are not particularly useful to assess PT tuning because they do not show the raw ^{14}C data versus depth compared to the Suigetsu ^{14}C record.

In fact, the changes of sedimentation rates implied by PT are even larger than those mentioned above because remaining conflicts between atmospheric and marine ^{14}C records are resolved by introducing ad hoc discontinuities into the core stratigraphies. These periods, forced to have a sedimentation rate dropping down to zero, are assumed to be previously unnoticed sedimentological hiatuses (e.g., nine hia-

tuses are inferred by PT in the 18 sediment cores presented in their claim that the “plateau-based high-resolution chronology has led to the detection of numerous millennial-scale hiatuses overlooked by conventional methods of stratigraphic correlation. In turn, the hiatuses give intriguing new insights into past changes of bottom current dynamics linked to different millennial-scale geometries of overturning circulation and climate change”). No independent sedimentological evidence is presented to verify these previously unnoticed hiatuses, which occur surprisingly at the ^{14}C plateau boundaries for no obvious reason. These discontinuities may just be artifacts of the PT method. Sarnthein and Grootes (2021) further claim that there should be a positive correlation between hiatus frequency and sedimentation rate. This counterintuitive hypothesis remains speculative in the absence of evidence independent of PT.

Surprisingly, the summary Fig. S2c for three cores (MD07/3088, SO213-76, and PS97/137-1) has been changed between the submitted version (available in *Climate of the Past Discussions*) and the final published paper by Sarnthein

et al. (2020). The changes are particularly important for the last two cores: for example, the Last Glacial Maximum surface reservoir age around 20 cal kyr BP has now doubled for core PS97/137-1 (more than 2000 ^{14}C yr in the final publication instead of 1000 ^{14}C yr in the initial submitted version). Benthic reservoir ages have also changed by more than 1000 ^{14}C yr (up or down) in the last two cores. In addition, both records now exhibit two hiatuses in the final publication as opposed to the single hiatus presented in the initial submission. In the submitted and published versions of Sarnthein et al. (2020), these new results were referred to a submitted paper by Küssner et al. (2021), which is still unpublished. Hence, no explanation is available to the reader to assess the reason for the drastic change of MRA reconstructions between the two versions.

Lamy and Arz (2021), who studied cores from the same area (e.g., Lamy et al., 2015), confirm the serious problem linked to the application of PT to core PS97/137-1. They raise doubts about the highly variable sedimentation rates within this core, which make the identification of any ^{14}C plateaus highly uncertain. They further note that the status of the laminations in these sediments is still debated, which implies that a rough count cannot be used to support the chronology based on PT. Michel and Siani (2021) also express caution about PT results presented by Sarnthein et al. (2020) on a Southeast Pacific core (MD07-3088) studied previously by Siani et al. (2013). Their concern is about the reconstructed variability of sedimentation rate based on PT (up to a factor of 25 for that core), and Michel and Siani (2021) also underline that the MRA cannot be precisely defined for the glacial part of the core. In addition to South Pacific cores, Lamy and Arz (2021) extend their doubts to PT tuning applied to other cores studied by Sarnthein et al. (2020) (e.g., GeoB3910 off Brazil in a zone studied previously by Arz et al., 1999).

Outside the 18 records obtained by the Kiel group and compiled by Sarnthein et al. (2020), there is one further paper by other authors who have used PT for stratigraphical purposes and for reconstructing ^{14}C reservoir ages. Umling and Thunell (2017) used eyeball PT to derive their chronology for a sediment core located at 2.7 km depth in the eastern equatorial Pacific. Their tuning of the ^{14}C record of core TRI163-23 onto the Suigetsu ^{14}C record implies the unexpected presence of hiatuses in this core at boundaries between ^{14}C plateaus (i.e., gaps between plateaus 1a and YD, between plateaus 1 and 1a, and between plateaus 2a and 1; see Fig. 3c of Umling and Thunell, 2017). The first hiatus is particularly long (1200 cal yr), but no independent data are presented to confirm the presence of such a large unconformity in this core. In addition, the deglacial ^{14}C reservoir ages reconstructed for core TRI163-23 exhibit discrepancies with the record obtained by de la Fuente et al. (2015) on another core from the eastern equatorial Pacific collected at a similar depth (2.9 km). Grootes and Sarnthein (2021) even disagree on specific aspects of the PT performed by Umling

and Thunell (2017) highlighting the subjectivity of the PT approach.

2.5 Plateau boundaries and MRA changes

The PT technique is focused on the detection and use of ^{14}C age plateaus. This implies that a large part of the ^{14}C record is left unused in the matching process. This is actually surprising because plateaus are used in the frame of PT to define the absolute chronology of the marine sediment core, while plateaus in the ^{14}C calibration curve are generally viewed as poor periods for obtaining precise calibrated ages in contrast to “high-slope” parts of the calibration curve (e.g., Svetlik et al., 2019). The only potential justification we can identify for such an approach would be if one believed that changes to MRA could only occur at plateau boundaries (and remained otherwise constant). However, there is no special significance in the plateaus of the ^{14}C calibration curve. After transformation to atmospheric $\Delta^{14}\text{C}$ (Fig. 3), a ^{14}C age plateau is only the second part of a wiggle, during which the $\Delta^{14}\text{C}$ decrease compensates for the radioactive decay. If anything, the entire $\Delta^{14}\text{C}$ wiggle is the feature that should be matched (equivalent to a high-slope–low-slope sequence in the plot of ^{14}C age versus calendar age).

Without a clear justification for why plateau boundaries would coincide with all MRA changes, there is thus no reason to match the ^{14}C age plateaus only and discard the other parts of the ^{14}C sequence. Matching the entire ^{14}C record with the target curve would provide a stronger analogy with the wiggle matching technique used for tree sequences (but without resolving the remaining pitfalls of having no independent calendar dating for most ocean sediments and that no matching could be done unless one already knew the MRA). Matching the entire ^{14}C sequence is also the method used to synchronize floating tree-ring sequences to a master chronology (e.g., Capano et al., 2020, used for the IntCal20 curve by Reimer et al., 2020).

Indeed, even if MRA changes were to occur only at plateau boundaries, the marine and atmospheric ^{14}C age records should show entirely the same shape, just with piecewise constant offsets during and between each plateau. This would provide an even stronger argument that the whole ^{14}C record should be matched. Plateau tuning would then reduce to finding the change points in the piecewise constant MRA offset between atmospheric and marine ^{14}C ages.

2.6 Spurious plateaus in marine sediments

In contrast to the atmospheric ^{14}C calibration curve, there is indeed a special significance in a ^{14}C age plateau observed in ocean sediments. As mentioned above, within a sediment core a ^{14}C age plateau could be a simple consequence of an abrupt sedimentation rate increase or even a slump that mixes sediments of the same age. Another potential source of ^{14}C age plateaus has been completely overlooked by Sarn-

thein et al. (2020): the coupling of continuous bioturbation with changes in the abundance of the ^{14}C signal carrier. Indeed, the assemblages of foraminifera used for ^{14}C analyses often varied in the past due to global or regional paleoceanographic conditions (these large and systematic faunal changes are the basis for the use of planktonic foraminifera in paleothermometry, e.g., Imbrie and Kipp, 1971; Kucera et al., 2005).

In particular, an abrupt decrease or an abrupt increase of the foraminifera abundance will inevitably create a ^{14}C age plateau, as theorized by Broecker et al. (1984). The first demonstration was provided by Bard et al. (1987), who showed that ^{14}C age plateaus and $\delta^{18}\text{O}$ phase lags measured on two planktonic species in a deep-sea core from the North Atlantic could be explained quantitatively by bioturbation modeling forced with the abundance records of both species. Since 1987 many other groups have made similar observations of ^{14}C age plateaus and discrepancies explained by bioturbation coupled with foraminifera abundance changes (e.g., Costa et al., 2018; Ausin et al., 2019).

In order to interpret ^{14}C age plateaus in ocean sediments, it is thus indisputably necessary to show the absolute abundance records of the different foraminifera used for ^{14}C dating (counts expressed in number per gram of sediment). This has never been the case for any of the PT papers by the Kiel group used for this new compilation (Sarnthein et al., 2007, 2011, 2013, 2015; Balmer et al., 2016; Sarnthein and Werner, 2017; Balmer and Sarnthein, 2018; Küssner et al., 2018; Sarnthein et al., 2020). It is possible that several marine ^{14}C age plateaus could be mere sedimentary artifacts.

Sarnthein and Grootes (2021) cite another paper by Ausin et al. (2021) published after the submission of our paper. This recent work is based on a sediment core from the Iberian margin for which Sarnthein and Grootes (2021) provide a graph representing the foraminifera abundance counts, showing no obvious correlation between ^{14}C plateaus and drops in abundances. This information is indeed useful, and it is unfortunate that these data are neither shown nor provided in the paper by Ausin et al. (2021).

Nevertheless, caution should be taken with the work by Ausin et al. (2021), who obtain low MRA and benthic ^{14}C values in this Iberian Margin core, notably during Heinrich stadial 1 (HS1) and the Last Glacial Maximum (LGM), in stark contrast with records obtained on nearby cores (Skinner et al., 2014, 2021). The MRA drop (down to 300 years) during HS1 based on PT is also in conflict with modeling results (Delaygue et al., 2003; Ritz et al., 2008; Franke et al., 2008; Butzin et al., 2017). Although Sarnthein and Grootes (2021) present the new paper by Ausin et al. (2021) as a “nice test case” of PT, the strong disagreement with the literature is not reassuring. Furthermore, it also remains to be seen if the bioturbation–abundance coupling could not be an adequate explanation for some ^{14}C age plateaus in the 20 other published records based on PT and for which the foraminifera counts are not available.

2.7 Attenuation and phase lag in the ocean

Let us now assume that ^{14}C age plateaus in marine records do match those identified in the atmospheric record (i.e., the basic assumption of the PT technique). What remains problematic, if we are intending to use PT to create a precise calendar age time scale for the marine record, is that marine ^{14}C age plateaus are assumed to be as sharp and as long as their corresponding atmospheric plateaus, even in the case of very large surface reservoir ages reconstructed by the method. The sections below show that this conflicts with our understanding of the carbon cycle.

For the past 14 kyr, high-resolution ^{14}C data on tree-ring and ^{10}Be on polar ice cores have shown that most centennial $\Delta^{14}\text{C}$ wiggles in the atmosphere are due to cosmogenic production changes (Beer et al., 1988; Adolphi and Muscheler, 2016; Adolphi et al., 2017, 2018), mainly linked to the solar variability as illustrated by studies covering the last millennium (e.g., Bard et al., 1997; Muscheler et al., 2007; Delaygue and Bard, 2011). This ^{14}C production signal is transferred from the atmosphere to the ocean surface before being slowly transported to the deep ocean. The atmospheric ^{14}C wiggle inevitably gets damped in the other reservoirs of the carbon cycle, notably the surface ocean. In addition, the oceanic wiggle is not strictly in phase with the atmospheric one. Both damping and phasing effects conflict with the main assumption of the PT technique, namely that marine ^{14}C age plateaus can be matched directly to atmospheric ones.

Using numerical models, it is possible to quantify the damping and phasing effects, which depend directly on the duration of the $\Delta^{14}\text{C}$ wiggle and on the carbon residence time in the considered carbon cycle reservoir (or chain of reservoirs). A convenient way is to consider a sinusoidal ^{14}C production leading to attenuated and shifted ^{14}C signals in the atmosphere and the ocean surface (see Fig. 4). The Indo-Pacific low-latitude surface box of the 12-box model by Bard et al. (1997) has a ^{14}C reservoir age of 320 ^{14}C yr at steady state. The relative attenuation (i.e., the amplitude in the troposphere divided by the amplitude in the surface ocean) is a factor of 1.8 for 500 cal yr long ^{14}C wiggles and a factor of 3.1 for 200 cal yr long wiggles. The phase lag between atmospheric and oceanic response also varies with the duration of the ^{14}C production signal: about 60 and 45 cal yr for 500 and 200 cal yr long wiggles, respectively.

To illustrate the relative attenuation increase with a larger reservoir age it is useful to consider the simulation for the Southern Ocean surface box which has a reservoir age of 890 ^{14}C yr in the 12-box model. For the same 500 and 200 cal yr long $\Delta^{14}\text{C}$ wiggles, the relative attenuation factors are 3.0 and 3.4, respectively. Figure 4a shows the results of these calculations for signal periods ranging from 2000 to 100 calendar years. The period is equivalent to the duration of the $\Delta^{14}\text{C}$ wiggle and to twice the duration of the ^{14}C age plateau, which corresponds to the descending part of the $\Delta^{14}\text{C}$ wiggle.

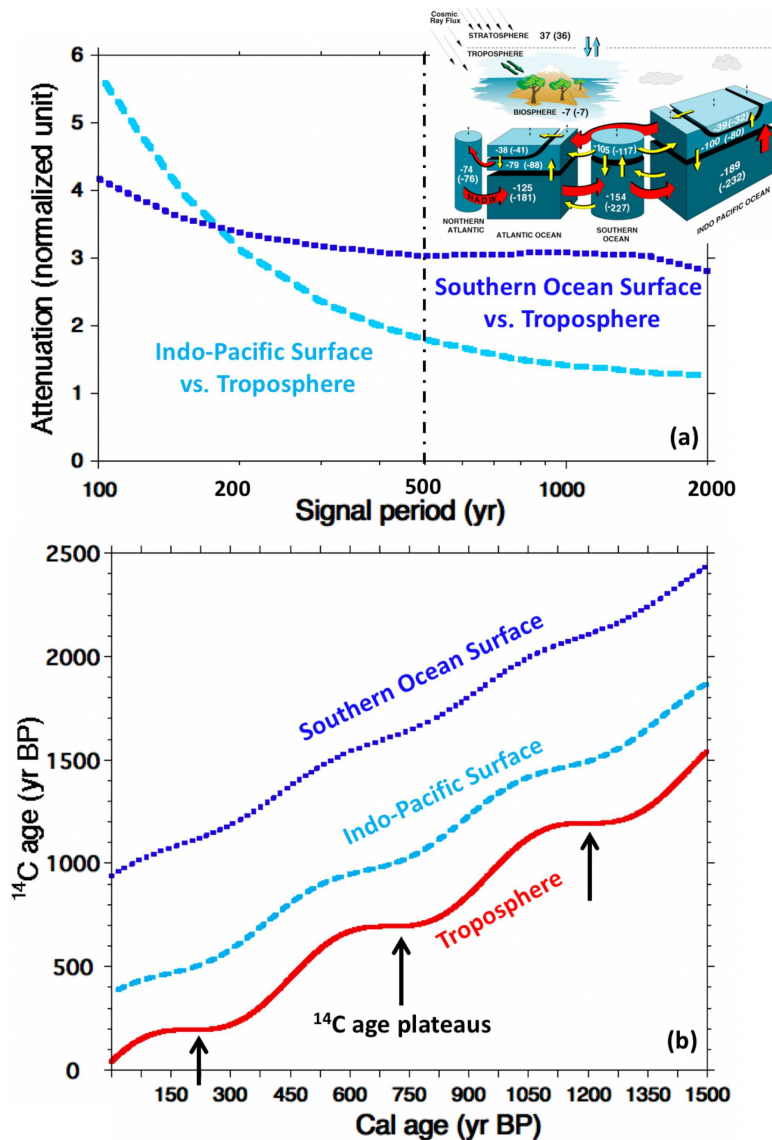


Figure 4. (a) Amplitude ratio of $\Delta^{14}\text{C}$ wiggles in the atmosphere and the surface ocean created by sinusoidal changes of the ^{14}C production as an input to the 12-box model shown in the upper insert (Bard et al., 1997). This normalized attenuation factor is plotted versus the signal period of production variations (on a log scale). The greater the attenuation, the more the amplitude of the sinusoid in the surface ocean is reduced. The factor would be equal to 1 if atmospheric and oceanic amplitudes were the same. The dashed light blue curve shows the calculation results for the Indo-Pacific surface box, while the dotted dark blue line stands for the Southern Ocean surface box. These two boxes differ by their surface ^{14}C reservoir age at steady state (320 and 890 years for the Indo-Pacific and Southern Ocean surface boxes, respectively). The vertical dash-dotted black line underlines the 500-year period wiggle used to construct panel (b). The inset graph shows the geometry of the model by Bard et al. (1997) with numbers on boxes indicating their steady-state $\Delta^{14}\text{C}$ (‰), numbers in parenthesis stand for halving the meridional overturning circulation (MOC). Note that the main goal of the simulations in Fig. 4 is to demonstrate that age plateaus almost disappear and are delayed in the surface ocean due to the smoothing effect of the carbon cycle, even if it stays strictly constant. These simulations are not intended to simulate ^{14}C and MRA changes due to variations of the ocean circulation. On this subject, it should be noted that part of the simulations presented by Goslar et al. (1995) and mentioned in Sect. 2.3 and 2.8 were obtained with the very same box model used for our simulations but with a variable MOC. (b) ^{14}C age versus calendar age plot computed for sinusoidal ^{14}C production wiggles with a period of 500 years and an amplitude change of $\pm 15\%$ around the mean value (in order to produce oscillations around the 1 : 1 line, ^{14}C ages are calculated with the true half-life of 5730 years). The solid red curve shows the evolution for the tropospheric box, exhibiting ^{14}C plateaus (marked with black arrows) when the slope of the relationship goes down to zero. The age plateau corresponds to the second part of the atmospheric $\Delta^{14}\text{C}$ wiggle, during which the $\Delta^{14}\text{C}$ decrease compensates the radioactive decay. The dashed light blue curve shows the calculation results for the Indo-Pacific surface box, while the dotted dark blue line stands for the Southern Ocean surface box. The blue curves are offset with respect to the atmospheric curve by their respective marine reservoir ages. In both cases, the slope of the relationship does not decrease to zero, implying the absence of true ^{14}C age plateaus in the surface ocean.

As illustrated in Fig. 4b, a 500 cal yr long wiggle of cosmogenic production varying by $\pm 15\%$ around its mean value is sufficient to produce an atmospheric ^{14}C age plateau. However, in the surface ocean boxes, the slope of the ^{14}C age versus calendar age curves does not drop to zero, i.e., there is an absence of a ^{14}C age plateau in the modeled surface ocean environment despite the atmospheric plateau. This is a direct consequence of the damping of ^{14}C signals by the carbon cycle.

The ^{14}C bomb spike of the early 1960s provides further evidence of the smoothing and phasing effects. The main ^{14}C injection lasted only a few years and the bomb spike can be viewed as the impulse response function of the carbon cycle. In detail, the bomb pulse is complicated because the $\Delta^{14}\text{C}$ decrease observed in the atmosphere over the last 50 years is also partially due to the Suess effect linked to the input of anthropogenic CO_2 devoid of ^{14}C (Levin and Hesshaimer, 2000). In any case, the ocean surface $\Delta^{14}\text{C}$ increased in the 1970s by 150‰–200‰ above pre-bomb values, which is about 5 times less than the maximum anomaly in the atmospheric pool. This large damping effect remains true even for the shallowest lagoons (Grottoli and Eakin, 2007), which illustrates the efficacy of ocean mixing to counterbalance air–sea gas exchange.

Today the ocean surface $\Delta^{14}\text{C}$ is still above these pre-bomb values (e.g., Andrews et al., 2016) and this anomaly will remain with us for many decades to come as the present level in the ocean surface is only about halfway through its long-term asymptotic decrease. The calculation of an average phase lag between atmosphere and ocean is difficult because the impulse response functions are completely asymmetric (i.e., the delay for the signal rise is totally different to that observed for the signal decrease). To sum up, the bomb spike in the surface ocean is also a century-scale event, with an attenuation compatible with that calculated by considering sinusoidal signals (Fig. 4a), which remains the traditional way used in signal analysis (i.e., so-called Bode plots).

2.8 Plateaus and carbon cycle changes

The considerations above apply to $\Delta^{14}\text{C}$ wiggles linked to ^{14}C production changes, but it has likewise been suggested that ^{14}C age plateaus may also correspond to carbon cycle changes, notably at the end of the Younger Dryas (YD) climatic event (Oeschger et al., 1980; Goslar et al., 1995; Hughen et al., 1998). This YD ^{14}C age plateau may have been caused by an abrupt resumption of the meridional overturning circulation as simulated by numerical models (Goslar et al., 1995; Stocker and Wright, 1996, 1998; Hughen et al., 1998; see Fig. 17 by Bard, 1998, comparing the ^{14}C age plateau simulated by the 12-box model and the Bern 2.5D physical model).

In such a case, the ^{14}C perturbation originates from the ocean, and the relative attenuation and phase relationships with the atmospheric pool are more complex, exhibiting re-

gional differences. The surface ocean regions responsible for uptake or outgassing of CO_2 exhibit large effects with no delay, whereas other regions are only affected in a passive way through the atmosphere. For those widespread passive regions, we must refer back to the calculations shown in Fig. 4a and b, which lead to large attenuations in the ocean.

The study of atmosphere and surface ocean ^{14}C wiggles linked to spatially variable ocean–atmosphere exchange is inherently more complex as it requires spatial resolution with 2D and 3D models and consideration of regional ^{14}C data to identify active and passive regions. However, regional gradient changes of surface ^{14}C simulated by models are generally on the order of a few centuries (Stocker and Wright, 1998; Delaygue et al., 2003; Butzin et al., 2005; Franke et al., 2008; Singarayer et al., 2008; Ritz et al., 2008), rather than the millennia advocated by Sarnthein et al. (2020).

2.9 The tephra method to reconstruct MRA

In Sect. 1.2 of their paper, Sarnthein et al. (2020) mention a completely different method to reconstruct MRA based on ^{14}C datings of the same volcanic ash layer (tephra) in land and marine sediments. This is indeed a precise and accurate method used in many studies, including those cited by Sarnthein et al. (2020). However, they should have also cited the two seminal papers on the subject: Bard (1988) was the first to specifically propose the use of volcanic ash layers to reconstruct past MRA variations, and Bard et al. (1994) were the first to reconstruct past MRA changes with this powerful method.

The further advantage of the MRA method based on tephra is that the downcore profile of volcanic shard counts provides a useful constraint on the bioturbation depth and intensity, which also affect ^{14}C ages measured on foraminifera. Indeed, this shard profile is the impulse response function of the bioturbation filter and hence provides information that can be used to correct ^{14}C ages used for the MRA calculation (Bard et al., 1994). Another route to detect and constrain bioturbation is to study the total scatter of ^{14}C ages measured on single specimens of foraminifera and to compare it with the smaller dispersion linked to analytical errors only (Fagault et al., 2019; Dolman et al., 2021).

3 Statistical perspective

3.1 Reliable plateau identification

Fundamental to the accuracy, robustness, and reliability in the estimates of the timescales and MRAs obtained by PT, is whether true atmospheric ^{14}C age plateaus can be consistently identified and also matched between sparsely sampled and noisy records. These plateaus must be reliably identified both in the atmospheric master target record, Lake Suigetsu in the case of Sarnthein et al. (2020), and in the marine sediment cores for which one wishes to infer a calendar chronol-

ogy. In the case of marine sediment cores, identification of these atmospheric ^{14}C age plateaus is further confounded by potential MRA changes, bioturbation, and the lack of an independent timescale. One needs to have confidence that the plateaus identified in both the marine and atmospheric ^{14}C records are not only genuine atmospheric features but have also been correctly paired together.

Sarnthein et al. (2020) do not appear to address this issue – instead concentrating on an argument as to whether the true underlying atmospheric ^{14}C record contains plateaus. The presence of ^{14}C plateau periods in the underlying atmosphere is a necessary condition for PT (discussed further in Sect. 3.8). However, the presence of such periods (in the unknown true atmosphere) is certainly not sufficient to ensure the reliability of PT. Rather, the main statistical concern for PT is as to whether any such genuine atmospheric ^{14}C age plateaus can be identified in both the sparse and uncertain Lake Suigetsu ^{14}C record and the marine sediment ^{14}C record being plateau-tuned. If one either mislocates a true ^{14}C age plateau in one or other of the records or incorrectly pairs plateaus between the records, then the subsequent timescales of the sediment core and MRA estimation will be unreliable. We raise specific statistical concerns regarding the reliable identification and pairing of potential plateaus.

3.2 Identification of atmospheric plateaus

The first statistical requirement for the PT technique is the ability to precisely identify hypothesized ^{14}C age plateaus based upon limited sequences of noisy and sparsely sampled ^{14}C observations. The limitations in the amount of data available in the underlying records used for PT and their observational noise lead to rather ambiguous estimations of the locations and durations of the proposed Sarnthein et al. (2020) ^{14}C age plateaus. The challenge of plateau identification will be most significant in the ocean sediment cores to be tuned, since they are typically the most sparsely sampled and lack a timescale, as we discuss later. However, such ambiguity is also present in the atmospheric records. This raises questions regarding the reliability of the atmospheric ^{14}C age plateaus used as a target.

In the case of Sarnthein et al. (2020), the hypothesized atmospheric ^{14}C age plateaus are selected based on the Lake Suigetsu and Hulu ^{14}C records (see Sarnthein et al., 2020's Fig. S1, showing ^{14}C error bars at 1σ). Sarnthein et al. (2020) invoke ad hoc changes of the dead carbon fraction (DCF) of the Hulu Cave speleothems (Sect. 2.2) and an argument that filtering has removed the plateaus within the speleothem ^{14}C record to explain the lack of correspondence between the ^{14}C age plateaus they outline in the Lake Suigetsu target curves compared with the Hulu Cave target (Sect. 1.2). There is no obvious reason that would explain systematic changes in the speleothem DCF occurring only during the atmospheric ^{14}C age plateaus in such a way as to both mask these atmospheric plateaus in the speleothem ^{14}C record

and to ensure that the speleothem record does not generate additional spurious, DCF-driven, ^{14}C age plateaus between the genuine atmospheric ones. As already underlined in our Sect. 2.2, the opposite hypothesis is made by Sarnthein et al. (2020) for MRA, which is assumed to remain constant during the atmospheric ^{14}C age plateaus, changing only at boundary times between plateaus.

Based on the comparison with the precise IntCal13 record over the past 14 cal kyr BP, the DCF for Hulu is on the order of 450 ± 70 ^{14}C yr (1σ , Cheng et al., 2018). This mean value and standard deviation have been further tested and refined in the frame of IntCal20 by comparing the Hulu data for individual speleothems with the tree-ring ^{14}C record over the past 14 cal kyr BP. This IntCal20 testing gives an estimate of 480 ± 55 ^{14}C yr (Reimer et al., 2020; Heaton et al., 2020b). The low value and stability of the Hulu DCF are attributed to the characteristics of the Hulu cave with its sandstone ceiling and open system conditions with the soil above it. In a similar way to the ocean modeling in Sect. 2.7, the carbon transport and mixing processes leading to the DCF should have somewhat smoothed the atmospheric ^{14}C variations. Although a specific kind of modeling should be performed for a particular cave system, the DCF value for Hulu cave (ca. 480 ^{14}C yr) is equivalent to the average MRA of low-latitude to midlatitude surface oceans (Heaton et al., 2020a). Consequently, the ^{14}C age plateaus should be smoothed and delayed at a similar level as in surface ocean records, for which Sarnthein et al. (2020) assume that plateaus are of the same duration and timing as in the atmospheric record.

Further, one would expect that due to the time-directional nature of any speleothem filtering (i.e., that it averages over past atmospheric ^{14}C concentrations), ^{14}C age plateaus in the Hulu record should either be seen with a time lag compared with the atmosphere or at least towards the more recent end of the atmospheric plateau. This is not the case in Sarnthein et al. (2020), where Fig. S1 predominantly proposes Hulu Cave ^{14}C age plateaus that occur at the beginning (i.e., older end) of their hypothesized atmospheric ^{14}C age plateaus.

When one considers the uncertainty in the ^{14}C determinations, which are used to identify the hypothesized atmospheric ^{14}C age plateaus (see Fig. S1 of Sarnthein et al., 2020, showing error bars plotted at 1σ), it is unclear how strong the evidence is for several of the plateaus in the atmospheric target suite. When measurement uncertainties are large, one would expect (simply due to the randomness of these uncertainties) to observe sequences of ^{14}C determinations that are non-monotonic even when the underlying atmospheric ^{14}C age to calendar age is monotonically increasing. Based upon the Lake Suigetsu observations and uncertainties, it is therefore hard to assess whether some of the hypothesized atmospheric ^{14}C age plateaus really exist or are instead just random artifacts due to measurement uncertainty. This is particularly true for the upper panel of their Fig. S1, which is focused on the period between 21 and 27 cal kyr BP.

To illustrate this concern about the reliability of the hypothesized atmospheric target plateaus more clearly, as mentioned in Sect. 2.3, we created a Lake Suigetsu-only calibration curve. This used the same Bayesian statistical method as implemented for IntCal20 (Heaton et al., 2020b; Reimer et al., 2020) but was constructed based only upon the ^{14}C observations from Lake Suigetsu (using the updated Lake Suigetsu calendar age timescale provided by Bronk Ramsey et al., 2020). Figure 1 shows the Lake Suigetsu ^{14}C data with their 1σ analytical uncertainties (both in radiocarbon and calendar age) and the resulting Suigetsu-only radiocarbon calibration curve with its 95 % posterior predictive probability interval. Superimposed horizontal lines indicate the 15 hypothesized atmospheric plateaus with their numbering as listed in Table 1 of Sarnthein et al. (2020). Besides the well-known plateau no. 1, corresponding to the beginning of the Bölling period, it is dubious as to whether many of the older plateaus in particular are supported by the Lake Suigetsu data based on our statistical assessment.

Furthermore, most of the Sarnthein et al. (2020) hypothesized ^{14}C age plateaus have calendar durations exceeding the 95 % posterior predictive probability interval around the Lake Suigetsu data (notably plateaus nos. 2a, 4, 8, and 10b). The two plateaus (nos. 2b and 6b) with the shortest duration (410 cal yr) are compatible with the probability interval around the Lake Suigetsu data. However, these sections of the Suigetsu-only calibration curve are also compatible with straight oblique lines with no plateau at all. Such a conclusion is supported by Fig. 2, which compares the plateaus and the IntCal20 curve. Only a few plateaus could correspond to particular structures of the IntCal20 curve, notably plateau no. 1, which is already known, and maybe plateaus nos. 7, 10a, and 11, although their identified structures are much shorter, and thus smaller in $\Delta^{14}\text{C}$ (Fig. 3), than the hypothesized plateaus would imply.

3.3 Matching plateaus

Current ^{14}C sediment-based records do not have the resolution or precision in ^{14}C measurement one might ideally desire – it is for this reason the community aims for the use of tree-rings to construct the internationally ratified IntCal calibration curve. For example, the Lake Suigetsu record (Bronk Ramsey et al., 2012) upon which PT is based contains only 76 observations from 12–13.9 cal kyr BP with ^{14}C age uncertainties varying between 39 and 145 ^{14}C yr (1σ). The Cariaco marine record (Hughen et al., 2006) is one of the more highly resolved collections of foraminifera but contains only 24 observations from 14–15.9 cal kyr BP with ^{14}C age measurement uncertainties of around 40 ^{14}C yr (1σ).

In light of such sparse sampling and measurement uncertainty, it is unclear how much confidence one can have that the identified ^{14}C age plateaus, in either the target Lake Suigetsu record or the marine record one intends to tune, are genuine atmospheric phenomena and whether they are cor-

rectly paired between the two records. One would need to be confident both that the Lake Suigetsu record had identified all genuine atmospheric ^{14}C age plateaus and further that one can then pair each identified marine ^{14}C age plateau correctly with its corresponding atmospheric ^{14}C age plateau. This latter step needs to take into account that the marine ^{14}C age plateau is offset by an unknown and potentially varying surface marine reservoir age.

If one fails to identify a genuine atmospheric ^{14}C age plateau using the Lake Suigetsu record, then one cannot presumably be sure one is matching the same ^{14}C age plateaus between the records with the consequential risk of severe misalignment of the marine core. As a hypothetical example, suppose there were five true atmospheric ^{14}C age plateaus, but only three of these five plateaus were identifiable in the noisy Lake Suigetsu observations. The other two genuine plateaus would therefore remain unknown in our target. Further, suppose one then identified three plateaus in the marine core to be tuned. With there being five true underlying ^{14}C age plateaus, these three marine plateaus could correspond to different plateaus from the three identified in the Lake Suigetsu target. Despite this, PT would confidently align the three plateaus in both records. The resulting alignment could however be entirely incorrect, leading to errors in the marine core chronology and MRA reconstruction.

3.4 Identification of marine plateaus

Further statistical difficulties arise in determining ^{14}C age plateaus in the marine core since before PT is performed one does not have a calendar timescale on which to provide a gradient (in terms of ^{14}C yr (cal yr) $^{-1}$). Without the ability to work out the ^{14}C gradient per calendar year, identifying a ^{14}C age plateau is considerably more challenging. A natural option might be to use the depth scale within the core. This would be equivalent to assuming a constant sedimentation rate. However, in then tying or matching subsequent plateau to the atmospheric ^{14}C age plateau, this assumption of constant sedimentation would be overridden and potentially significantly violated. This introduces significant circularity and potential for contradiction into the PT approach. In fact, in previous work, the PT method appears to provide sedimentation rates that vary by up to a factor of 5 to 8 within a single core (e.g., cores PS2644 and MD08-3180 in Sarnthein et al., 2015; PS75/104-1 in Küssner et al., 2018), considerably more (by orders of magnitude) in other cores from the Nordic Seas (Sarnthein and Werner, 2017), and even more in ad hoc hiatuses mentioned above in Sect. 2.4. The question of how one identifies a marine ^{14}C age plateau in the context of a changing and unknown sedimentation rate and calendar age scale – for which estimates only become available after one has already been required to select plateaus and perform the tuning – does not have a straightforward solution and is prone to confirmatory bias.

3.5 Objective plateau identification

The original PT method (Sarnthein et al., 2007, 2011) was based only on visual inspection of the observed ^{14}C ages versus depth to determine the ^{14}C age plateaus (both the duration of the plateaus and their constant ^{14}C ages including an unknown marine reservoir age). In an attempt to reduce the subjectivity of eyeball evaluation, Sarnthein et al. (2015) calculated the first derivative of a locally fitted ^{14}C age versus depth curve to identify the ^{14}C age plateaus (i.e., times when the slope drops to near zero). This refinement goes in the right direction, but the authors admit that there is room for subjectivity when choosing the level of smoothing and the threshold for defining a plateau. In addition, their derivation technique does not explicitly consider the different analytical uncertainties of the individual ^{14}C measurements on atmospheric and marine samples that are quite variable, a notable example being the Lake Suigetsu ^{14}C data measured on small plant macrofossils of varying carbon masses (Bronk Ramsey et al., 2012). Such analytical uncertainties should be taken into account because a kink or a plateau in a ^{14}C versus depth relationship within a record could be a structure within the analytical errors rather than an atmospheric feature. PT that includes such random analytical error would be useless.

In any case, Sarnthein et al. (2015) chose to keep the visual inspection as their main tool: “we continued to base our calculations of reservoir ages, our tuned calendar ages of plateau boundaries, and sedimentation rates on the boundary ages defined by visual inspection.”. In Sarnthein et al. (2020), it seems that eyeball inspection has been preferred again: indeed Table 1 provides ^{14}C age plateaus obtained “by means of visual inspection” in the target records (Lake Suigetsu varved sediments and Hulu cave stalagmites).

Weninger (2021) advocates for the use of an alternative automated technique (a “summed probability distribution”) proposed by Weninger and Edinborough (2020) for detecting plateaus in the ^{14}C record. Unfortunately, this paper does not provide the necessary mathematical details to reproduce and test the proposed technique. It should also be noted that Weninger and Edinborough (2020) only claim the detection of 4 plateaus in the 24 to 14 kyr BP time window of IntCal20 (see their Fig. 1), in contrast with the 11 plateaus named by Sarnthein et al. (2020) over the same period.

3.6 Testing PT

To objectively assess the ability to reliably identify and tune ^{14}C age plateaus in the context of the noisy and sparse ^{14}C data currently available to us, we performed a simulation study. For this study, we aimed to investigate two aspects: firstly, can we reliably and robustly identify atmospheric ^{14}C age plateaus in data that are of comparable density and precision to those from Lake Suigetsu (Bronk Ramsey et al., 2020). Secondly, having simulated paired ^{14}C age and depth data from a hypothetical marine core with comparable preci-

sion and density to the Cariaco Basin (Hughen et al., 2006), can we use PT to accurately reconstruct the marine record’s underlying calendar age scale?

Readers should note that our simulated pseudo-Cariaco marine core is densely sampled compared with the marine cores studied by Sarnthein et al. (2020). Moreover, in our study we have simplified the tuning problem by setting a constant MRA for our simulated marine record. The additional complexities introduced to PT should MRAs change at any time are not considered. Consequently, our simulation results should be considered a best-case scenario for the PT method.

To maximize objectivity, we aimed to implement the automated ^{14}C age plateau identification approach presented in Sarnthein et al. (2015). The description of their automated approach lacks precise detail to be completely reproducible; however, we hope that our method follows the principles sufficiently closely. Having simulated our cores, to estimate the local ^{14}C $\text{yr}(\text{cal yr})^{-1}$ gradient at any depth, we fit a kernel-weighted linear model using a $N(0, 50^2 \text{ cal yr}^2)$ kernel (or an analogue in the case of the marine core for which we have no known calendar age scale) and based upon a fixed number of samples in the neighborhood of the depth under consideration. We also show the results using a $N(0, 100^2 \text{ cal yr}^2)$ kernel to illustrate the effects on gradient estimation and plateau identification in our simulated pseudo-atmospheric cores. This wider kernel will extend the effective width of the window in which we calculate the local gradient, using more neighboring observations and performing more smoothing. Further details are given in Sect. 3.7 and 3.8.

Sarnthein et al. (2015) do not specify definite rules as to either the choice of bandwidth (the standard deviation of the weighting kernel) to use when estimating the local gradient within a record or the subsequent gradient threshold that defines a ^{14}C plateau. The subjectivity in these selections, which as we show makes a considerable difference to the number and locations of plateaus, will always reduce the ability of PT to provide an objective approach. Indeed, as explained in Sect. 3.5, Sarnthein et al. (2015) admit to a final selection that is based upon agreement with their eye-balled choices.

Sarnthein et al. (2015) trialed two thresholds for the local gradient to determine a ^{14}C plateau. They state that a value of 0 ^{14}C $\text{yr}(\text{cal yr})^{-1}$ generated too many short potential plateau periods. In increasing the threshold value, these disconnected short time periods will tend to merge with one another to create longer time periods. However, other disconnected time periods may simultaneously be introduced. Sarnthein et al. (2015) therefore also trialed increasing the threshold to 1 ^{14}C $\text{yr}(\text{cal yr})^{-1}$ which they suggest agreed better with their visual preferences. However, a time period with a gradient of 1 ^{14}C $\text{yr}(\text{cal yr})^{-1}$ is quite a distance from what most would describe as a plateau. Indeed, a gradient of 1 is what the slope (^{14}C $\text{yr}(\text{cal yr})^{-1}$) should be without any perturbation of the radioactive decay. Nevertheless, in order to test this issue, we now show our results alongside three po-

tential gradient thresholds of 0, 0.5, and $1\text{ }^{14}\text{C yr (cal yr)}^{-1}$ that one might use to identify a plateau.

3.7 Atmospheric baseline

To further increase objectivity, we aim to have an underlying “ground-truth” atmospheric ^{14}C baseline for the simulated cores that accurately reflects the true size and scale of atmospheric ^{14}C age variation and potential plateaus. Consequently, our study considers the period from 12–13.9 cal kyr BP, and we use the IntCal20 curve (Reimer et al., 2020) as our ground-truth atmospheric ^{14}C baseline, shown as a black line in Fig. 5a–c. Since this period of IntCal20 is based upon densely sampled ^{14}C determinations from highly resolved tree-rings, we can be confident it represents genuine atmospheric ^{14}C age variation and plateaus. Even here though, exactly what would be considered to constitute a ^{14}C age plateau, and how many are present, is ill-defined.

To this tree-ring-based plateau baseline, we create a pseudo-Suigetsu atmospheric ^{14}C record by randomly sampling (fairly evenly spaced) calendar ages between 12–13.9 cal kyr BP and adding noise comparable to that seen in the ^{14}C determinations of Lake Suigetsu (Bronk Ramsey et al., 2020). For this pseudo-atmospheric record, we assume the calendar ages of the ^{14}C determinations are known precisely, which aids plateau identification.

We also create a pseudo-Cariaco marine ^{14}C record by again sampling (fairly evenly spaced) calendar ages and adding noise comparable to the ^{14}C determinations in the Cariaco Basin record (Hughen et al., 2006). To make this analogous to a genuine marine record PT, the calendar age information within the pseudo-marine record was then dropped. We assumed the ^{14}C measurements were evenly spaced in depth along the core. We sought to identify if we could then reconstruct this underlying calendar age information using PT.

3.8 Simulated atmospheric ^{14}C records

We initially simulated three hypothetical cores recording atmospheric ^{14}C . These aimed to represent data similar to Lake Suigetsu, both in terms of sampling density and ^{14}C age measurement uncertainties. There are 76 ^{14}C observations from Lake Suigetsu between 12 and 13.9 kcal BP. For each of our atmosphere-recording pseudo-cores, we sampled $N = 76$ observations as follows.

1. Simulate calendar ages θ_i through the following steps:
 - sample the $U_k \sim \text{Unif}[12, 13.9]$ for $k = 1, \dots, 2N$;
 - order sampled values to obtain $U_{(1)} < U_{(2)} < \dots < U_{(2N)}$;
 - set $\theta_i = U_{(2i)}$ for $i = 1, \dots, N$ (i.e., every second ordered value).

This provides a set of random (but relatively evenly sampled) calendar ages.

2. Simulate ^{14}C ages X_i for $i = 1, \dots, N$ as $X_i \sim N(\mu(\theta_i), \sigma_i^2)$, where $\mu(\theta_i)$ is the mean of the IntCal20 curve at calendar age θ_i and σ_i^2 is the variance of the ^{14}C age measurements reported in the true Lake Suigetsu record (Bronk Ramsey et al., 2020).

To estimate the gradient ($^{14}\text{C yr (cal yr)}^{-1}$) at any given calendar age t , following the approach described in Sarnthein et al. (2015) as best we could, we fitted a linear model to the nearest 60 observations, in terms of calendar age, weighted according to their reported uncertainties σ_i and a $N(0, 50^2 \text{ cal yr}^2)$ kernel centered on t – this gives a weighted moving window, where those observations more than 100–200 cal yr from t have little weight. In our idealized scenario, we assumed the calendar ages of the observations were known exactly for weighting and gradient estimation – in the genuine Lake Suigetsu record these calendar ages are themselves uncertain, making gradient estimates somewhat harder.

Figure 5a–c show, for each of the three atmosphere-recording pseudo-cores, the simulated data and estimated gradient (with 95 % intervals for the estimate obtained by the weighted linear model). Gradient estimates at the calendar age extremes should be treated with caution and are thus not considered below. In Fig. 5a–c we overlay the three gradient thresholds (0, 0.5 and $1\text{ }^{14}\text{C yr (cal yr)}^{-1}$) that might be considered as potential plateau indicators as discussed in Sect. 3.6. Shown as a rug at the bottom of each plot are the time periods (color coded according to threshold) for which the gradient falls below each threshold. Figure 5d shows the gradient estimates for all three cores overlain with the recommended Sarnthein et al. (2015) gradient threshold of $1\text{ }^{14}\text{C yr (cal yr)}^{-1}$. Here the rug shows the time periods in all the cores (color coded by core) where the locally estimated gradient falls below $1\text{ }^{14}\text{C yr (cal yr)}^{-1}$. For the automated PT approach to be reliable it is necessary, yet not sufficient, for those periods and plateaus in the atmosphere-recording pseudo-cores that one intends to use as an atmospheric tuning target for the marine record to align.

We also repeated our gradient estimation technique using a wider $N(0, 100^2 \text{ cal yr}^2)$ kernel. This creates a wider moving window and gives weight to a greater number of neighboring observations when estimating the local gradient. The results for the same three simulated pseudo-atmospheric cores with this alternative wider kernel (which applies greater smoothing) can be seen in Fig. 6.

We observe that while the gradients obtained in each simulated core show some of the same main features, differences remain that are critical to PT. In particular, we see that the choice of kernel and the gradient cutoff for identifying a plateau is key and that selection is non-trivial if one wishes to maintain consistency in creating a robust atmospheric target between records. Varying these subjective choices, even

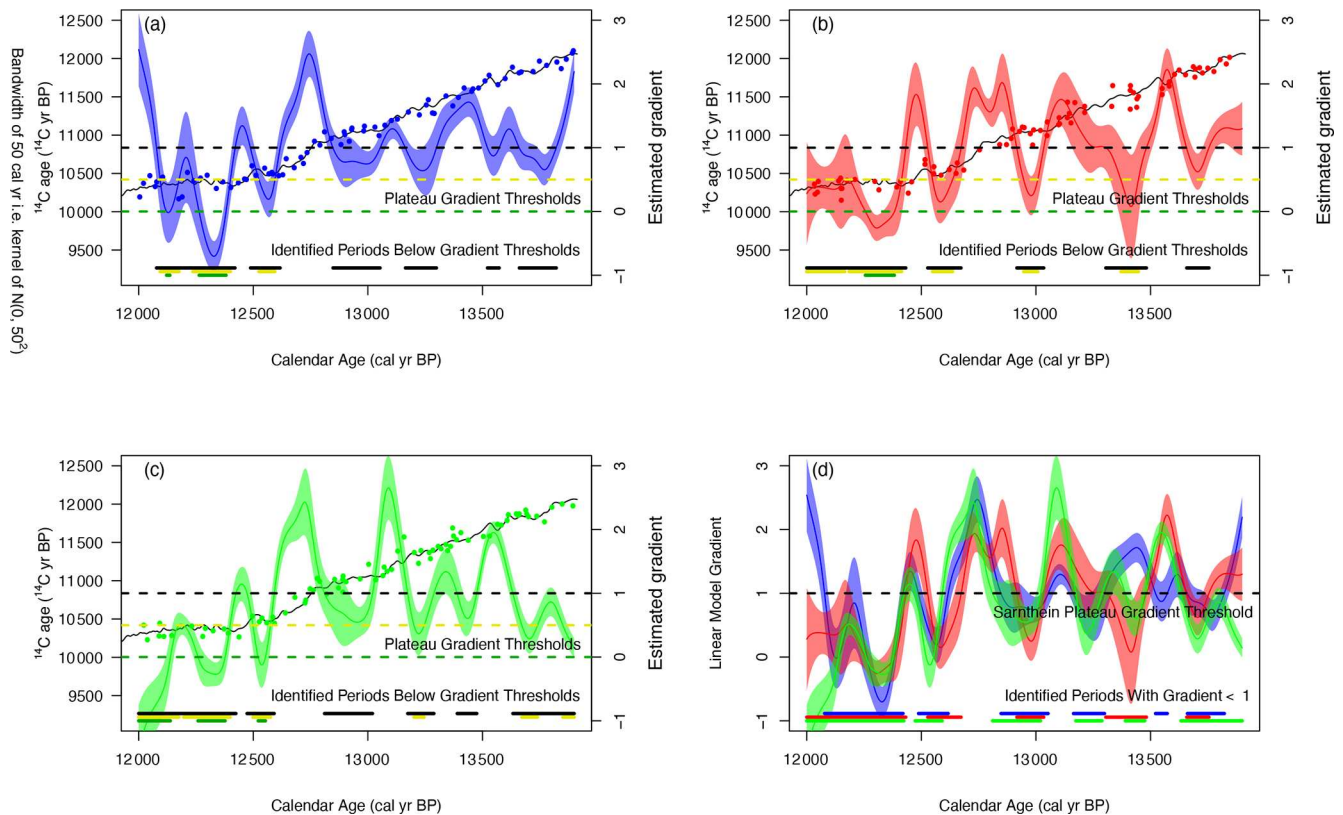


Figure 5. Simulation study to identify the ability of a Suigetsu-style record to reliably identify atmospheric ^{14}C age plateaus. In panels (a)–(c) we present three simulated atmospheric records generated by sampling, subject to noise, from the high-precision tree-ring-based section of IntCal20 between 12–13.9 cal kyr BP (shown as a black line) with a sampling density matching that of Lake Suigetsu (Bronk Ramsey et al., 2020). The level of noise added to create the simulated ^{14}C observations (blue, red, and green dots) is of an equivalent level to that present in Lake Suigetsu ^{14}C . For each simulated set of observations, we present an estimate of the local gradient (shown as blue, red, and green curves with their 95 % confidence intervals) according to a locally weighted linear model as proposed by Sarnthein et al. (2015). These local gradient estimates are obtained using a $N(0, 50^2 \text{ cal yr}^2)$ kernel to provide the weightings. We overlay three gradient thresholds (0, 0.5, and $1 \text{ }^{14}\text{C yr (cal yr)}^{-1}$) that might be used to identify a ^{14}C age plateau. Shown as a rug at the bottom of each plot are the time periods in each core that correspond to a local gradient below each threshold (color coded by threshold). In panel (d) we overlay the gradient estimates to assess consistency (or lack of) between the three simulated cores in terms of the number and location of ^{14}C age plateaus one might identify. As a rug, we plot the time periods in each core (color coded by core) that correspond to a local gradient below the threshold of $1 \text{ }^{14}\text{C yr (cal yr)}^{-1}$ proposed by Sarnthein et al. (2015).

within the same core, can make a significant difference to the number and location of atmospheric plateaus which one would estimate. This has significant consequences upon the reliability of any subsequent PT of a marine core.

While we can seem to identify elements of the long YD ^{14}C plateau from 12–12.4 cal kyr BP in all our simulated “Suigetsu-quality” atmospheric cores, beyond this it is hard to consistently and reliably identify what constitutes a plateau. Whatever the choice of threshold and kernel, the number and timing of plateau periods are not consistent between the three simulated records. Using a threshold of $1 \text{ }^{14}\text{C yr (cal yr)}^{-1}$ and a $N(0, 50^2 \text{ cal yr}^2)$ kernel, we may estimate either 5 or 6 plateau periods (Fig. 5d), depending upon the simulated core we consider. Further, other than the YD plateau, these do not accurately align between the three

cores. Even if one sought to merge the plateaus, it is unclear as to how one would know which to merge with others.

If one has different numbers of ^{14}C age plateaus in the atmospheric target, then one will tune the marine core very differently. A PT using the blue simulated record as an atmospheric target (Fig. 5a) would likely lead to very different results than tuning to the red simulated record (Fig. 5b). We see in Fig. 5d the lack of consistency in the alignment of the identified ^{14}C age plateau periods from 13–14 cal kyr BP, making it very hard to know what plateaus one should aim to tune. In the time period we consider for our study, Sarnthein et al. (2020) identify two plateaus they aim to use as tuning targets (at 11.9–12.48 cal kyr BP and 13.66–14.04 cal kyr BP), plus a potential third plateau at 12.78–13.08 cal kyr BP, but whether they always use this third plateau is unclear. How-

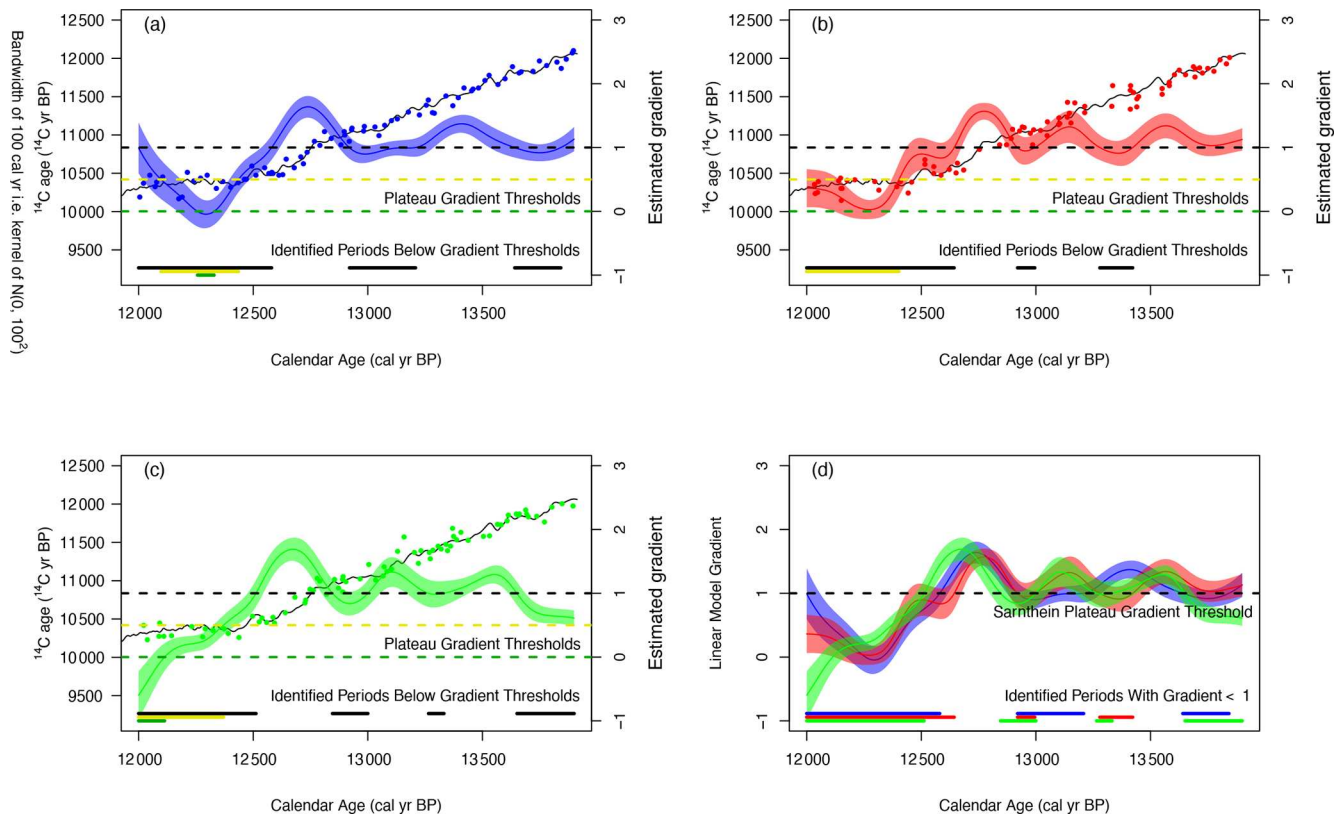


Figure 6. The same as Fig. 5 but using a wider $N(0, 100^2 \text{ cal yr}^2)$ kernel to provide the weightings for the local gradient estimate. The same three simulated atmospheric cores are used.

ever, in our simulation study we find just as strong support for a plateau around 13.4 cal kyr BP in some of our simulated cores. Further, looking at the underlying IntCal20 estimate which, as explained above, is tree-ring-based and highly resolved in this period, the level of visual evidence for a plateau from 12.78–13.08 cal kyr BP is unclear.

In conclusion, we see that using different Suigetsu-quality atmospheric ^{14}C records to initially identify ^{14}C age plateaus could lead to quite different target matchings for the marine records. Not only might the atmospheric target ^{14}C age plateaus identified not align with those one would have obtained using a different initial atmospheric record, but one might also be aiming to identify different number of ^{14}C age plateaus in the marine core. Further, if there are in fact more genuine atmospheric ^{14}C age plateaus than the atmospheric-recording core indicated, this could lead to erroneous pairings between the atmospheric and marine records.

3.9 Simulated marine ^{14}C records

We also created two pseudo-marine ^{14}C records to span 12–13.9 cal kyr BP, again using the tree-ring-based section of IntCal20 as our ground-truth atmospheric ^{14}C baseline. For these pseudo-marine records, we aimed to represent the relatively high density and precision of the Cari-

aco Basin un-varved ^{14}C record (Hughen et al., 2006). These simulated pseudo-marine cores are created similarly to the pseudo-atmospheric simulated records above, but after creation we remove the calendar age information that aids $^{14}\text{C yr (cal yr)}^{-1}$ gradient calculation. This makes them analogous to the marine cores used by Sarnthein et al. (2020). Instead ^{14}C age plateaus in the pseudo-marine must be identified using only their ordering (or simulated depth) within the core – a considerably more challenging and less robust task. We aim to compare our simulated marine ^{14}C records against our pseudo-atmospheric cores of Sect. 3.8 to assess the ability to identify and match shared ^{14}C age plateaus.

For this element of the study, we make the very strong simplifying assumption that there are no MRA changes in the marine records. This simplifying assumption will aid us considerably in identifying the atmospheric component of the ^{14}C age signal in our simulated marine records. As such, this part of our study only considers the effect on identifying plateaus in light of the increased sparsity in marine records and the lack of timescale on which to reliably infer the ^{14}C to calendar age gradient. MRA changes will add a very considerable further layer of confounding and difficulty.

For IntCal13, in the 14–15.9 cal kyr time period, the Cariaco Basin un-varved ^{14}C record contained 24 observations (Hughen et al., 2006). Note that this 14–15.9 cal kyr period

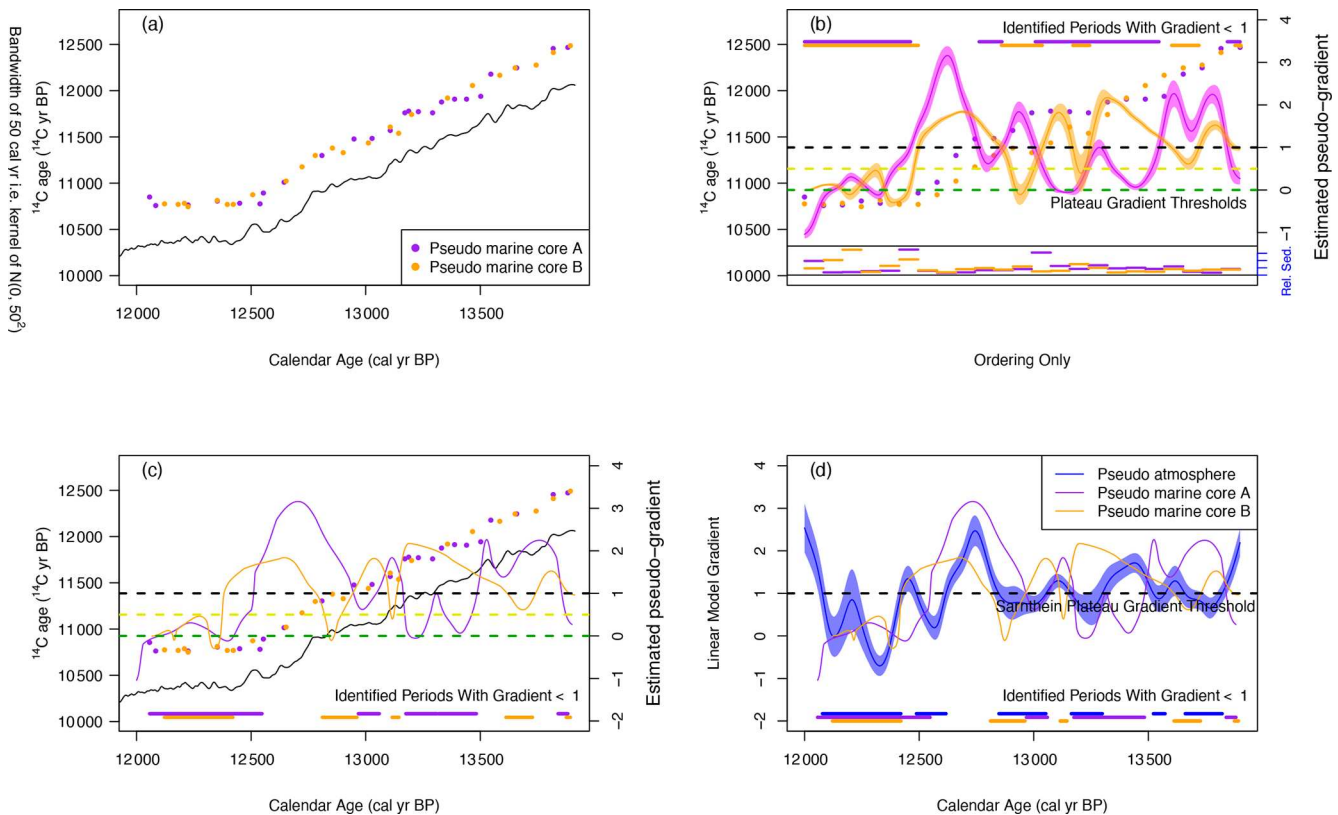


Figure 7. Simulation study to identify the ability to identify ^{14}C age plateaus in marine records for which calendar age scales are not initially known. In panel (a), we simulate two marine records between 12–13.9 cal kyr BP, again using the tree-ring-based IntCal20 mean as the ground truth. These simulated marine cores are based upon the sampling density of the Cariaco Basin un-varved record (Hughen et al., 2006) with a similar level of observational ^{14}C noise and have been created with a constant MRA of 400 ^{14}C yr. To identify plateaus, we first estimate the gradient on the basis of an unknown calendar age scale. We create a pseudo-calendar age scale by rescaling the observations so that they are equally spaced along the cores before applying our locally weighted linear model approach, using an equivalent $N(0, 50^2 \text{ cal yr}^2)$ kernel, to estimate the gradients on this (equally spaced) pseudo-scale. Estimates of pseudo-gradients and implied relative sedimentation rates on this equally spaced pseudo-timescale are provided in panel (b). At the top, we plot (color coded by core) the section of core for which we would obtain a local pseudo-gradient below $1 \text{ }^{14}\text{C yr (pseudo-cal yr)}^{-1}$ and which could be identified as a ^{14}C age plateau. Scaling back to the true underlying calendar age timescale, panel (c) indicates where, in terms of the actual calendar age scale, one might classify plateaus. In panel (d), these are overlain against the first of our simulated atmospheric records in Fig. 5 to assess synchronicity. As a rug we show the time periods, on the true underlying calendar age timescale, corresponding to local gradient threshold estimates below $1 \text{ }^{14}\text{C yr (cal yr)}^{-1}$ for the simulated atmospheric record and $1 \text{ }^{14}\text{C yr (pseudo-cal yr)}^{-1}$ for the two simulated marine records.

is used as representative of sampling density since the Cariaco un-varved record does not extend to 12 cal kyr. For each pseudo-marine core, mirroring the approach given in our pseudo-atmospheric simulated records, we simulated $N = 24$ random observations with underlying calendar ages again sampled according to every other ordered value of a uniform distribution to create relatively equally spaced ages ranging from 12–13.9 cal kyr BP. However, for these marine cores, we selected ^{14}C age measurement uncertainties that matched those in the Cariaco Basin (1σ of approximately 40 ^{14}C yr) and applied an adjustment of a constant MRA of 400 ^{14}C yr. The resultant simulations are shown in Fig. 7 – with the simulated data shown in Fig. 7a. Since the Cariaco Basin ^{14}C record is quite densely sampled compared to marine records

studied by Sarnthein et al. (2020) and we have applied a constant MRA, this set-up provides a best-case scenario for PT.

As discussed above and in Sect. 3.4, estimating the gradient ($^{14}\text{C yr (cal yr)}^{-1}$) and identifying ^{14}C age plateaus is made more complex here since, in a marine core, the calendar ages are unknown before PT. One is therefore required to select a prior pseudo-calendar scale on which to estimate a gradient and hence identify plateaus. We chose to estimate the gradient by assuming our ^{14}C observations are equally spaced in depth (and hence equally age-spaced along our pseudo-calendar scale) along the core as shown in Fig. 7b. Since by construction our true calendar ages, θ_i , are relatively evenly spaced, this pseudo-calendar scale should equate to a sedimentation rate that is not unrealistically variable compared to the reconstructed estimates inferred by the PT in

Sarnthein et al. (2015), Sarnthein and Werner (2017), and Küssner et al. (2018). The inferred sedimentation rate that would generate this equal spacing in depth can be seen at the foot of Fig. 7b. The maximum variation in sedimentation rate within the simulated cores is on the order of 10. Such equal spacing can equivalently be interpreted as using the ordering information only to determine the gradient, i.e., the change we observe moving from one ^{14}C observation to the next. This is a natural approach as it requires no a priori assumptions regarding the unknown true calendar ages.

The same linear model approach as used for the pseudo-atmospheric cores was then applied with weightings determined according to our even-depth observational spacing (i.e., using the observational order only). We used the nearest 20 marine ^{14}C observations and a kernel on the depth scale analogous to the $N(0, 50^2 \text{ cal yr}^2)$ used for the pseudo-atmospheric observations. This depth kernel was applied so that 50 cal yr corresponded to 50/1900 (2.6 %) of the entire pseudo-marine core's depth (i.e., so the 1.9 kyr period between 12–13.9 cal kyr period covered the full pseudo-marine core). The obtained pseudo-gradient estimates for the cores are shown in Fig. 7b on this even-spacing (or observational-order) basis.

We would select ^{14}C age plateaus and the observations belonging to them based upon Fig. 7b with its even-depth-spaced, pseudo-calendar timescale. We have overlain thresholds of 0, 0.5, and $1 \text{ }^{14}\text{C yr (cal yr)}^{-1}$ on this pseudo-gradient scale. Shown at the top of this plot are the sections of each simulated core (color coded according to the core) for which the local pseudo-gradient lies below a threshold of $1 \text{ }^{14}\text{C yr (pseudo-cal yr)}^{-1}$. For example, in the simulated marine core A (shown in purple) we might identify an order-based plateau ending around the sixth observation (perhaps covering the first to the sixth) since in this neighborhood the ^{14}C gradient on the pseudo-calendar scale is below 1.

We can infer where any order-based ^{14}C age plateaus we identify correspond to on the true calendar age timescale by transforming back from the ordered or even-depth spacing to the underlying calendar ages of our observations. Figure 7c shows the order-based gradient estimates (and the observations in each simulated marine core) when plotted against the true “unknown” calendar age timescale. In our example, the ^{14}C age plateau identified between the first and sixth observation in simulated marine core A of Fig. 7b corresponds to a ^{14}C age plateau covering the interval 12–12.5 cal kyr BP. Shown as a rug are the underlying time periods for the sections of each core (color coded) we would assess as corresponding to a ^{14}C age plateau when applying a threshold of $1 \text{ }^{14}\text{C yr (pseudo-cal yr)}^{-1}$.

In Fig. 7d, we overlay the order-based marine core ^{14}C gradients, after they have been transformed back to their true underlying timescales, against the ^{14}C gradient obtained from our first simulated Suigetsu-quality atmospheric record. The rug indicates the plateaus one would identify based on a threshold of $1 \text{ }^{14}\text{C yr (cal yr)}^{-1}$ in the simulated (blue) at-

mospheric record and $1 \text{ }^{14}\text{C yr (pseudo-cal yr)}^{-1}$ in the two simulated (purple and orange) marine records. For PT tuning to provide reliable MRA estimates, the identified plateaus (or dips in gradient) in the simulated marine cores and the simulated atmospheric ^{14}C record should align in Fig. 7d. This does not reliably occur.

The large amount of noise in the marine records, their sparsity, and critically their unknown true timescale make identification of any ^{14}C plateaus very difficult with the potential to be unreliable and inconsistent. Highly different numbers and locations of ^{14}C plateaus would be indicated when applying the method to the two simulated marine records and for all gradient thresholds. Furthermore, the marine ^{14}C age plateaus may not correspond to the ^{14}C age plateaus in the atmospheric record. Should one attempt to align the indicated ^{14}C age plateaus of either of the simulated marine cores to the atmospheric target by PT, one would obtain significantly incorrect chronologies for the marine cores. Further, this misalignment would then result in significant inferred MRA changes; such changes in MRA would be incorrect since the underlying marine records were created with a constant MRA.

While simple, this simulation study illustrates some of the potential difficulties of identifying ^{14}C age plateaus in the presence of observational noise and a lack of sampling density. Were the simulated data to have much higher precision and be sampled much more densely, we would expect the ^{14}C age plateaus to align more consistently. Such a preliminary study with an exact and reproducible approach is needed to assess the robustness of the method. The fundamental questions of how to remove the potentially confounding effects of MRA changes, the lack of a timescale for the marine records on which to calculate the ^{14}C age gradient combined with significant sedimentation rate changes, and other potential geoscientific factors in identifying ^{14}C age plateaus will however still remain.

3.10 Variability in atmospheric ^{14}C

Finally, implicit in the Sarnthein et al. (2020) paper is a suggestion that using Lake Suigetsu alone provides a more precise reconstruction of atmospheric ^{14}C levels from 55–13.9 cal kyr BP than the IntCal20 synthesis (Reimer et al., 2020). Specifically, that by combining ^{14}C records from a diverse range of archives, the IntCal curves lose genuine atmospheric structure that can be extracted from Suigetsu. This perspective is suggested by Sarnthein et al. (2020) through an argument that the IntCal20 curve has lesser variation and fewer wiggles from 55–13.9 cal kyr BP, where it is based upon a range of archives, than from 13.9–0 cal kyr BP, where it is based upon highly resolved tree-ring determinations.

Indeed, Reimer et al. (2020) recognize the limitations of the current archives upon which they base the IntCal20 curves. The ideal is for a truly atmospheric ^{14}C record extending back to 55 000 cal yr BP that also provides sufficient

detail to reconstruct the high-frequency component of the ^{14}C signal reliably and precisely. However, this characterization of IntCal20, as overly smooth and hence unreliable from 55–13.9 cal kyr BP, is to misunderstand what the IntCal curve represents.

The values published as the IntCal curves aim to provide pointwise summaries of the ^{14}C age, in terms of the mean and uncertainty, at any chosen calendar age. This is not the same as trying to represent the level of ^{14}C variation from a single year to the next. Critically, a smooth pointwise mean does not necessarily imply no variation in atmospheric ^{14}C levels. More likely, it represents that we do not yet know when and with what magnitude any such ^{14}C variations occur.

Construction of the IntCal20 curve uses Bayesian splines (Heaton et al., 2020b). The outputs of this Bayesian approach are a large set of posterior curve realizations that aim to find a trade-off between passing near the observed ^{14}C determinations on which the curve is based, while not being so variable as to overfit the data and introduce spurious features that are simply artifacts of the analytical sampling errors within the ^{14}C observations. The pointwise summary is then based upon averaging over 2500 of these curve realizations.

The IntCal approach does, in fact, assume there are similar levels of short-term atmospheric variability from 55–13.9 cal kyr as in the tree-ring-based section from 13.9–0 cal kyr BP. This can be seen by looking at the 5 individual posterior realizations, randomly selected from the 2500 used to create the final IntCal20 pointwise summary, shown in Fig. 8. All these individual realizations exhibit significant short-term ^{14}C variability, although none are on the scale of the hypothesized Sarnthein et al. (2020) plateaus as they must still agree with the pointwise IntCal uncertainties (shown at the 95 % level as the dotted purple envelope). However, as we do not yet have sufficiently detailed ^{14}C measurements, the precise timing and magnitude of the fluctuations in the realizations is unknown. Consequently, when averaged to provide the pointwise estimates, the realizations generate an IntCal pointwise mean (shown as solid purple) that is smoother than any individual realization.

4 Conclusion and outlook

Creating reliable calendar chronologies for deep-sea cores and understanding the scale and timings of MRA changes (^{14}C depletion), as well as their variation across the globe, are key for the understanding of past Earth systems and carbon cycles. If the MRA is known, then ^{14}C calibration can be used to create the calendar chronology. Conversely, if the calendar chronology is known, ^{14}C can be used to infer the MRA. When neither the MRA nor the calendar chronology are known in advance, this creates a challenging problem. However, in such circumstances when neither MRA nor calendar chronology is known, we have strong reservations re-

garding the ability of PT to robustly provide such chronologies or accurately infer MRA changes.

The ^{14}C changes in marine sediment cores do not accurately mirror atmospheric variability due to attenuation; phase shift of the atmospheric signal; and variability in sedimentation rate, MRA, and foraminifera assemblages. Further, low-resolution and noisy ^{14}C datasets, particularly hard to avoid in marine sediment cores, severely limit the ability to reconstruct the fine-scale structures needed to tune to atmospheric ^{14}C signal. Consequently, the identification and tuning of hypothesized ^{14}C age plateaus between sparse marine sediment and atmospheric records may lead to significant misalignment. The resultant calendar chronology for the marine sediment and inferred MRA changes may therefore be equally incorrect.

Techniques do exist to provide calendar chronologies for deep-sea cores independently from ^{14}C (and which can then be used to infer MRA changes). These utilize alternative age links between proxies in combination with age–depth modeling. One approach is to use climate proxies with the sediment cores, for example these have been tied to the oxygen isotopic ($\delta^{18}\text{O}$) profile of Hulu Cave stalagmites, which have been accurately dated by U-Th (Bard et al., 2013; Heaton et al., 2013; Hughen and Heaton, 2020). Potential age links are also provided by dated tephra layers (e.g., Bard et al., 1994; Siani et al., 2013). Some of these approaches have been developed by the INTIMATE group and are discussed and implemented in Austin et al. (2011) and Waelbroeck et al. (2019). The latter includes some of the sediment cores in Sarnthein et al. (2020).

Even amongst these alternative approaches to create calendar chronologies for deep-sea cores, those based upon climate proxies (i.e., all except the use of tephra) require significant assumptions about the global synchronicity of the climate changes used to tie the records together. Although evidence does support an assumption of globally synchronous timing for certain rapid paleoclimatic changes (Corrick et al., 2020), it is important to consider the specific climate changes used for tying and to recognize the uncertainty that potentially non-exact synchronicity introduces into the resulting marine core calendar chronology (Heaton et al., 2013). The use of these climate proxy approaches to tuning will also mask possible non-synchronous climate changes and precludes studying the climate dynamics on the centennial to pluri-decennial timescale (Mekhaldi et al., 2020).

Regarding the identification of atmospheric ^{14}C variation, we recognize that a precise, highly resolved, and directly atmospheric set of ^{14}C archives extending back to 55 cal BP would provide a step change in our ability to understand higher-frequency variations in past ^{14}C levels. While the Lake Suigetsu ^{14}C record provides a first step towards this goal, it is not of sufficient resolution or density to provide this – and, as explained in Sarnthein et al. (2020) and Bronk Ramsey et al. (2020), its varve-counted timescale needs adjustment using the Hulu Cave ^{14}C record. To accurately iden-

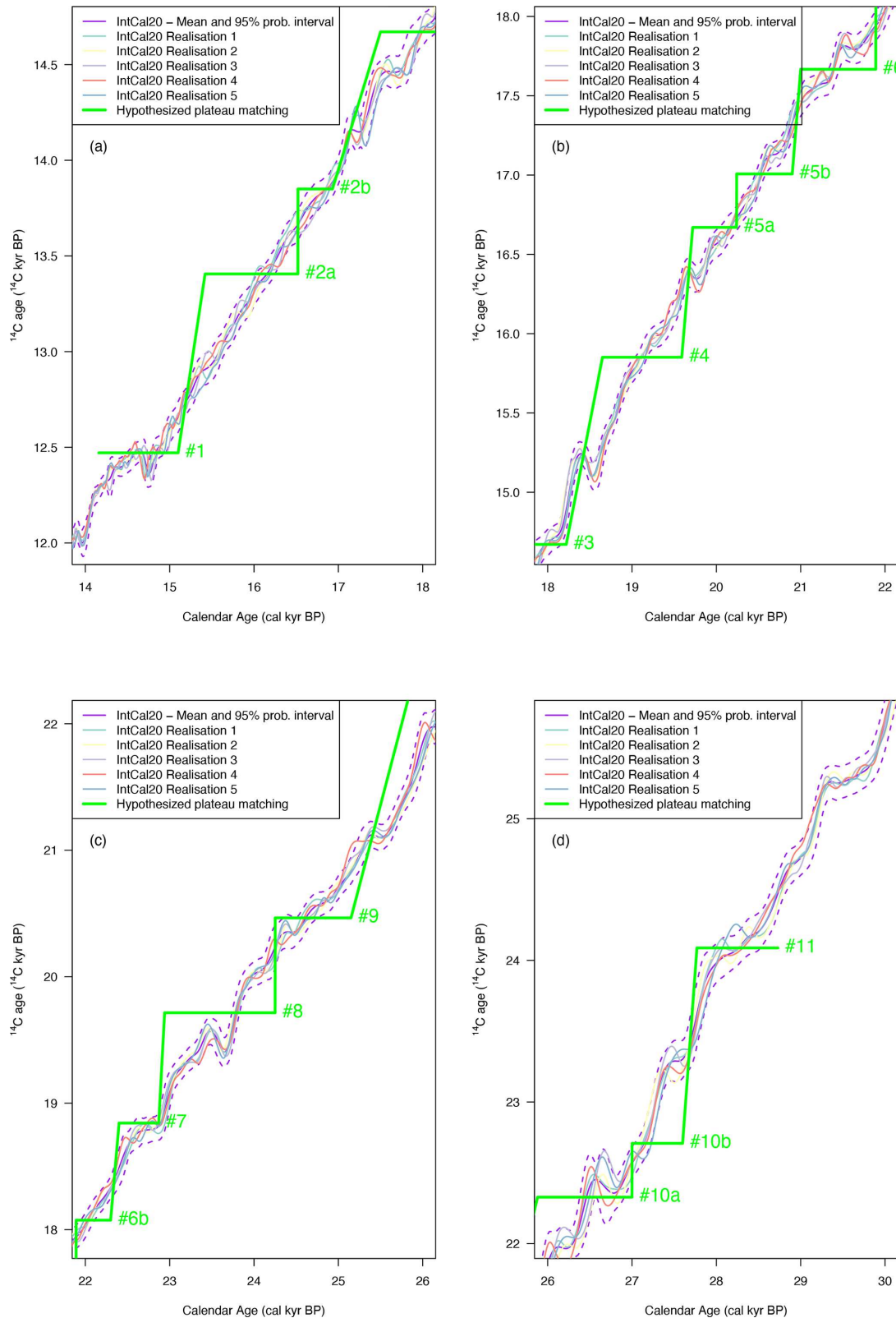


Figure 8. Plot of five individual spline realizations randomly selected from the Bayesian posterior of the Markov Chain–Monte Carlo approach used to create IntCal20. The published IntCal20 consists of pointwise means (shown as a solid purple line) and 95 % pointwise predictive intervals (dotted purple line) that are obtained by averaging over 2500 of these individual curve realizations (Heaton et al., 2020b). Superimposed thick green lines indicate the 15 atmospheric plateaus with their numbering as listed in Table 1 of Sarnthein et al. (2020).

tify the higher-frequency components of ^{14}C variation from 55–14 cal kyr BP we must await recovery of new archives, notably floating tree-ring sequences.

IntCal20, compared to previous versions of the ^{14}C calibration curve, profits from a multitude of improvements in all ^{14}C archives beyond 14 cal kyr. These include new high-resolution ^{14}C and U-Th data from Hulu Cave (Cheng et al., 2018), reanalysis of the Lake Suigetsu timeline (Bronk Ramsey et al., 2020), updates in the calendar scale and MRA modeling of the Cariaco basin ^{14}C dataset (Hughen and Heaton, 2020), floating tree-ring ^{14}C sequences (Adolphi et al., 2017; Turney et al., 2010, 2016; Capano et al., 2018, 2020), and modeling MRA time variations to correct the marine-based records (Butzin et al., 2020). These have then been combined using a more robust Bayesian spline statistical approach (Heaton et al., 2020b) that aims to identify shared features seen in multiple records without being overly influenced by individual outlying ^{14}C measurements that may not provide an accurate representation of atmospheric ^{14}C levels. However, as accepted by the IntCal20 authors, the sampling resolution and nature of the diverse records (including their uncertain calendar timescales as well as the indirect nature of ^{14}C records taken from both stalagmites and marine sediment cores) mean that centennial ^{14}C variations are not able to be reliably resolved at present beyond 14 cal kyr BP. The discovery of further floating ^{14}C tree-ring sequences (e.g., Cooper et al., 2021) hold promise in addressing this.

The extreme variations of the PT-inferred sedimentation, including frequent hiatuses, should be tested with independent techniques in order to prove that PT is reliable and that sedimentation rate variations and hiatuses are not artifacts of PT. For these crucial tests, PT should be performed completely independently from the results obtained with other techniques (e.g., tuning with tephra or with climate proxy records). In other words, these other time markers should not be combined to PT if one wants to test the validity of this method.

In order to further understand the possible existence of long ^{14}C plateaus, it may also be useful to plan new model simulations taking into account carbon cycle and oceanographic changes during Heinrich and Dansgaard–Oeschger events. Numerical experiments performed with box models and 3D Earth system models with relevant changes (e.g., of the Meridional Overturning Circulation of the ocean) may be compared and would provide a stringent test in a wiggle-matching exercise.

Code availability. Code to reproduce our simulation study and recreate Figs. 5, 6 and 7 is available at <https://doi.org/10.5281/zenodo.5176137> (Heaton and Bard, 2021).

Data availability. The data used and represented in figures are taken from the literature with relevant citations of published papers.

Author contributions. The authors worked jointly on the various aspects of the paper, with an emphasis on radiocarbon data, cosmogenic production and carbon cycle changes for EB and on the detection of radiocarbon variations and statistical modelling for TJH.

Competing interests. The authors declare that they have no conflict of interest.

Disclaimer. Publisher's note: Copernicus Publications remains neutral with regard to jurisdictional claims in published maps and institutional affiliations.

Acknowledgements. We thank the editor, André Paul, the referees, Paula Reimer and an anonymous referee, and the commenters, Michael Sarnthein, Pieter Grootes, Frank Lamy, Helge Arz, Elisabeth Michel, Giuseppe Siani, and Bernhard Weninger, for their comments which helped us in revising and strengthening our paper. Timothy J. Heaton was funded by a Leverhulme Trust Fellowship RF-2019-140/9. Edouard Bard is supported by EQUIPEX ASTERCERE and ANR CARBOTRYDH.

Financial support. This research has been supported by the Leverhulme Trust (grant no. RF-2019-140/9), EQUIPEX ASTERCERE and ANR CARBOTRYDH.

Review statement. This paper was edited by André Paul and reviewed by Paula Reimer and one anonymous referee.

References

- Adolphi, F. and Muscheler, R.: Synchronizing the Greenland ice core and radiocarbon timescales over the Holocene – Bayesian wiggle-matching of cosmogenic radionuclide records, *Clim. Past*, 12, 15–30, <https://doi.org/10.5194/cp-12-15-2016>, 2016.
- Adolphi, F., Muscheler, R., Friedrich, M., Gütler, D., Wacker, L., Talamo, S., and Kromer, B.: Radiocarbon calibration uncertainties during the last deglaciation: Insights from new floating tree-ring chronologies, *Quaternary Sci. Rev.*, 170, 98–108, <https://doi.org/10.1016/j.quascirev.2017.06.026>, 2017.
- Adolphi, F., Bronk Ramsey, C., Erhardt, T., Edwards, R. L., Cheng, H., Turney, C. S. M., Cooper, A., Svensson, A., Rasmussen, S. O., Fischer, H., and Muscheler, R.: Connecting the Greenland ice-core and U/Th timescales via cosmogenic radionuclides: testing the synchronicity of Dansgaard–Oeschger events, *Clim. Past*, 14, 1755–1781, <https://doi.org/10.5194/cp-14-1755-2018>, 2018.
- Andrews, A., Siciliano, D., Potts, D., DeMartini, E., and Covarrubias, S.: Bomb Radiocarbon and the Hawaiian Archipelago:

- Coral, Otoliths, and Seawater, *Radiocarbon*, 58, 531–548, <https://doi.org/10.1017/RDC.2016.32>, 2016.
- Arz, H. W., Pätzold, J., and Wefer, G.: Climatic changes during the last deglaciation recorded in sediment cores from the Northeast Brazilian Continental Margin, *Geo Marine Letters*, 19, 209–218, 1999.
- Ausin, B., Haghypour, N., Wacker, L., Voelker, A. H. L., Hodell, D., Magill, C., Looser, N., Bernasconi, S. M., and Eglinton, T. I.: Radiocarbon age offsets between two surface dwelling planktonic foraminifera species during abrupt climate events in the SW Iberian margin, *Paleoceanography and Paleoclimatology*, 34, 63–78, <https://doi.org/10.1029/2018PA003490>, 2019.
- Ausin, B., Sarnthein, M., and Haghypour, N.: Glacial-to-deglacial reservoir and ventilation ages on the southwest Iberian continental margin, *Quaternary Sci. Rev.*, 255, 106818, <https://doi.org/10.1016/j.quascirev.2021.106818>, 2021.
- Austin, W. E. N., Telford, R. J., Ninnemann, U. S., Brown, L., Wilson, L. J., Small, D. P., and Bryant, C. L.: North Atlantic reservoir ages linked to high Younger Dryas atmospheric radiocarbon concentrations, *Global Planet. Change*, 79, 226–233, 2011.
- Balmer, S. and Sarnthein, M.: Glacial-to deglacial changes in North Atlantic meltwater advection and deep-water formation – Centennial-to-millennial-scale ^{14}C records from the Azores Plateau, *Geochim. Cosmochim. Ac.*, 236, 399–415, <https://doi.org/10.1016/j.gca.2018.03.001>, 2018.
- Balmer, S., Sarnthein, M., Mudelsee, M., and Grootes, P. M.: Refined modeling and ^{14}C plateau tuning reveal consistent patterns of glacial and deglacial ^{14}C reservoir ages of surface waters in low-latitude Atlantic, *Paleoceanography*, 31, 1030–1040, <https://doi.org/10.1002/2016PA002953>, 2016.
- Bard, E.: Correction of accelerator mass spectrometry ^{14}C ages measured on planktonic foraminifera: Paleoceanographic implications, *Paleoceanography*, 3, 635–645, <https://doi.org/10.1029/PA003i006p00635>, 1988.
- Bard, E.: Geochemical and geophysical implications of the radiocarbon calibration, *Geochim. Cosmochim. Ac.*, 62, 2025–2038, [https://doi.org/10.1016/S0016-7037\(98\)00130-6](https://doi.org/10.1016/S0016-7037(98)00130-6), 1998.
- Bard, E., Arnold, M., Duprat, J., Moyes, J., and Duplessy, J. C.: Reconstruction of the last deglaciation: deconvolved records of $\delta^{18}\text{O}$ profiles, micropaleontological variations and accelerator mass spectrometric ^{14}C dating, *Clim. Dynam.*, 1, 101–112, <https://doi.org/10.1007/BF01054479>, 1987.
- Bard, E., Arnold, M., Mangerud, M., Paterne, M., Labeyrie, L., Duprat, J., Mélières, M. A., Sonstegaard, E., and Duplessy, J. C.: The North Atlantic atmosphere-sea surface ^{14}C gradient during the Younger Dryas climatic event, *Earth Planet. Sc. Lett.*, 126, 275–287, [https://doi.org/10.1016/0012-821X\(94\)90112-0](https://doi.org/10.1016/0012-821X(94)90112-0), 1994.
- Bard, E., Raisbeck, G., Yiou, F., and Jouzel, J.: Solar modulation of cosmogenic nuclide production over the last millennium: comparison between ^{14}C and ^{10}Be records, *Earth Planet. Sc. Lett.*, 150, 453–462, [https://doi.org/10.1016/S0012-821X\(97\)00082-4](https://doi.org/10.1016/S0012-821X(97)00082-4), 1997.
- Bard, E., Ménot, G., Rostek, F., Licari, L., Böning, P., Edwards, R. L., Cheng, H., Wang, Y., and Heaton, T. J.: Radiocarbon Calibration/Comparison Records Based on Marine Sediments from the Pakistan and Iberian Margins, *Radiocarbon*, 55, 1999–2019, https://doi.org/10.2458/azu_js_rc.55.17114, 2013.
- Beer, J., Siegenthaler, U., Bonani, G., Finkel, R. C., Oeschger, H., Suter, M., and Wölfli, W.: Information on past solar activity and geomagnetism from ^{10}Be in the Camp Century ice core, *Nature*, 331, 675–679, <https://doi.org/10.1038/331675a0>, 1988.
- Broecker, W., Mix, A. C., Andree, M., and Oeschger, H.: Radiocarbon measurements on coexisting benthic and planktic foraminifera shells: potential for reconstructing ocean ventilation times over the past 20 000 years, *Nucl. Instrum. Meth. B*, 5, 331–339, [https://doi.org/10.1016/0168-583X\(84\)90538-X](https://doi.org/10.1016/0168-583X(84)90538-X), 1984.
- Bronk Ramsey, C., van der Plicht, J., and Weninger, B.: “Wiggle matching” radiocarbon dates, *Radiocarbon*, 43, 381–389, <https://doi.org/10.1017/S0033822200038248>, 2001.
- Bronk Ramsey, C., Staff, R. A., Bryant, C. L., Brock, F., Kitagawa, H., van der Plicht, J., Scholaut, G., Marshall, M. H., Brauer, A., Lamb, H. F., Payne, R. L., Tarasov, P. E., Haraguchi, T., Gotanda, K., Yonenobu, H., Yokoyama, Y., Tada, R., and Nakagawa, T.: A Complete terrestrial radiocarbon record for 11.2 to 52.8 kyr BP, *Science*, 338, 370–374, 2012.
- Bronk Ramsey, C., Heaton, T. J., Scholaut, G., Staff, R. A., Bryant, C. L., Brauer, A., Lamb, H. F., Marshall, M. H., and Nakagawa, T.: Reanalysis of the atmospheric radiocarbon calibration record from Lake Suigetsu, Japan, *Radiocarbon*, 62, 989–999, <https://doi.org/10.1017/RDC.2020.18>, 2020.
- Butzin, M., Prange, M., and Lohmann, G.: Radiocarbon simulations for the glacial ocean: the effects of wind stress, Southern Ocean sea ice and Heinrich events, *Earth Pl. Sc. Lett.*, 235, 45–61, <https://doi.org/10.1016/j.epsl.2005.03.003>, 2005.
- Butzin, M., Köhler, P., and Lohmann, G.: Marine Radiocarbon Reservoir Age Simulations for the Past 50 000 Years, *Geophys. Res. Lett.*, 44, 8473–8480, <https://doi.org/10.1002/2017GL074688>, 2017.
- Butzin, M., Heaton, T. J., Köhler, P., and Lohmann, G.: A Short Note on Marine Reservoir Age Simulations Used in IntCal20, *Radiocarbon*, 62, 865–871, <https://doi.org/10.1017/RDC.2020.9>, 2020.
- Capano, M., Miramont, C., Guibal, F., Kromer, B., Tuna, T., Fagault, Y., and Bard, E.: Wood ^{14}C dating with AixMICADAS: methods and application to tree-ring sequences from the Younger Dryas event in the southern French Alps, *Radiocarbon*, 60, 51–74, <https://doi.org/10.1017/RDC.2017.83>, 2018.
- Capano, M., Miramont, C., Shindo, L., Guibal, F., Marschal, C., Kromer, B., Tuna, T., and Bard, E.: Onset of the Younger Dryas recorded with ^{14}C at annual resolution in French subfossil trees, *Radiocarbon*, 62, 901–918, <https://doi.org/10.1017/RDC.2019.116>, 2020.
- Cheng, H., Edwards, R. L., Southon, J., Matsumoto, K., Feinberg, J. M., Sinha, A., Zhou, W., Li, H., Li, X., and Xu, Y.: Atmospheric $^{14}\text{C}/^{12}\text{C}$ changes during the last glacial period from Hulu Cave, *Science*, 362, 1293–1297, 2018.
- Cooper, A., Turney, C. S. M., Palmer, J., Hogg, A., McGlone, M., Wilmshurst, J., Lorrey, A., Heaton, T., Russell, J., McCracken, K., Anet, J., Rozanov, E., Friedel, M., Suter, I., Peter, T., Muscheler, R., Adolphi, F., Dosseto, A., Faith, T., Fenwick, P., Fogwill, C., Hughen, K., Lipson, M., Liu, J., Nowaczyk, N., Rainsley, E., Bronk Ramsey, C., Sebastianelli, P., Soulimi, Y., Stevenson, J., Thomas, Z., Tobler, R., and Zech, R.: A global environmental crisis 42 000 years ago, *Science*, 371, 811–818, 2021.
- Corrick, E. C., Drysdale, R. N., Hellstrom, J. C., Capron, E., Rasmussen, S. O., Zhang, X., Fleitmann, D., Couchoud, I., and

- Wolff, E.: Synchronous timing of abrupt climate changes during the last glacial period, *Science*, 369, 963–969, 2020.
- Costa, K., McManus, J., and Anderson, R.: Radiocarbon and Stable Isotope Evidence for Changes in Sediment Mixing in the North Pacific over the Past 30 kyr, *Radiocarbon*, 60, 113–135, <https://doi.org/10.1017/RDC.2017.91>, 2018.
- de la Fuente, M., Skinner, L., Calvo, E., Pelejero, C., and Cacho, I.: Increased reservoir ages and poorly ventilated deep waters inferred in the glacial Eastern Equatorial Pacific, *Nat. Commun.*, 6, 7420, <https://doi.org/10.1038/ncomms8420>, 2015.
- Delaygue, G. and Bard, E.: An Antarctic view of beryllium-10 and solar activity for the past millennium, *Clim. Dynam.*, 36, 2201–2218, <https://doi.org/10.1007/s00382-010-0795-1>, 2011.
- Delaygue, G., Stocker, T. F., Joos, F., and Plattner, G.-K.: Simulation of atmospheric radiocarbon during abrupt oceanic circulation changes: trying to reconcile models and reconstructions, *Quaternary Sci. Rev.*, 22, 1647–1658, [https://doi.org/10.1016/S0277-3791\(03\)00171-9](https://doi.org/10.1016/S0277-3791(03)00171-9), 2003.
- Dolman, A. M., Groeneveld, J., Mollenhauer, G., Ho, S. L., and Laepple, T.: Estimating bioturbation from replicated small-sample radiocarbon ages, *Paleoceanography and Paleoclimatology*, 36, e2020PA004142, <https://doi.org/10.1029/2020PA004142>, 2021.
- Fagault, Y., Tuna, T., Rostek, F., and Bard, E.: Radiocarbon dating small carbonate samples with the gas ion source of AixMICADAS, *Nucl. Instrum. Meth. B*, 455, 276–283, <https://doi.org/10.1016/j.nimb.2018.11.018>, 2019.
- Fournier, A., Gallet, Y., Usoskin, I., Livermore, P. W., and Kovaltsov, G. A.: The impact of geomagnetic spikes on the production rates of cosmogenic ^{14}C and ^{10}Be in the Earth's atmosphere, *Geophys. Res. Lett.*, 42, 2759–2766, <https://doi.org/10.1002/2015GL063461>, 2015.
- Franke, J., Paul, A., and Schulz, M.: Modeling variations of marine reservoir ages during the last 45 000 years, *Clim. Past*, 4, 125–136, <https://doi.org/10.5194/cp-4-125-2008>, 2008.
- Goslar, T., Arnold, M., Bard, E., Kuc, T., Pazdur, M. F., Ralska-Jasiewiczowa, M., Rozanski, K., Tisnerat, N., Walanus, A., Wicik, B., and Wieckowski, K.: High concentration of atmospheric ^{14}C during the Younger Dryas cold episode, *Nature*, 377, 414–417, <https://doi.org/10.1038/377414a0>, 1995.
- Grootes, P. M. and Sarnthein, M.: Community comment on “On the tuning of plateaus in atmospheric and oceanic ^{14}C records to derive calendar chronologies of deep-sea cores and records of ^{14}C marine reservoir age changes” by Edouard Bard and Timothy J. Heaton, *Clim. Past Discuss.*, <https://doi.org/10.5194/cp-2020-164-CC2>, 2021.
- Grotoli, A. G. and Eakin, C. M.: A review of modern coral $\delta^{18}\text{O}$ and $\Delta^{14}\text{C}$ proxy records, *Earth-Sci. Rev.*, 81, 67–91, <https://doi.org/10.1016/j.earscirev.2006.10.001>, 2007.
- Heaton, T. J. and Bard, E.: TJHeaton/PlateauTuning: First release of plateau tuning code (v.1.0.0), Zenodo [code], <https://doi.org/10.5281/zenodo.5176137>, 2021.
- Heaton, T. J., Bard, E., and Hughen, K.: Elastic Tie-Pointing – Transferring Chronologies between Records via a Gaussian Process, *Radiocarbon*, 55, 1975–1997, https://doi.org/10.2458/azu_js_rc.55.17777, 2013.
- Heaton, T. J., Köhler, P., Butzin, M., Bard, E., Reimer, R. W., Austin, W. E. N., Bronk Ramsey, C., Grootes, P. M., Hughen, K. A., Kromer, B., Reimer, P. J., Adkins, J. F., Burke, A., Cook, M. S., Olsen, J., and Skinner, L. C.: Marine20 – the marine radiocarbon age calibration curve (0–55 000 cal BP), *Radiocarbon*, 62, 821–863, <https://doi.org/10.1017/RDC.2020.68>, 2020a.
- Heaton, T. J., Blaauw, M., Blackwell, P. G., Bronk Ramsey, C., Reimer, P. J., and Scott, E. M.: The IntCal20 approach to radiocarbon calibration curve construction: a new methodology using Bayesian splines and errors-in-variables, *Radiocarbon*, 62, 821–863, <https://doi.org/10.1017/RDC.2020.46>, 2020b.
- Hughen, K. and Heaton, T. J.: Updated Cariaco Basin ^{14}C Calibration Dataset from 0–60 cal kyr BP, *Radiocarbon*, 62, 1001–1043, <https://doi.org/10.1017/RDC.2020.53>, 2020.
- Hughen, K. A., Overpeck, J. T., Lehman, S. J., Kashgarian, M., Southon, J., Peterson, L. C., Alley, R., and Sigman, D. M.: Deglacial changes in ocean circulation from an extended radiocarbon calibration, *Nature*, 391, 65–68, <https://doi.org/10.1038/34150>, 1998.
- Hughen, K. A., Southon, J. A., Lehman, S. J., Bertrand, C. J. H., and Turnbull, J.: Marine-Derived ^{14}C Calibration and activity record for the past 50 000 years updated from the Cariaco Basin, *Quaternary Sci. Rev.*, 25, 3216–3227, 2006.
- Imbrie, J. and Kipp, N. G.: A new micropaleontological method for quantitative paleoclimatology: application to a late Pleistocene Caribbean core, in: *Late Cenozoic Glacial Ages*, edited by: Turekian, K. K., Yale Univ. Press, New Haven, CN, USA, 71–182, 1971.
- Kucera, M., Weinelt, M., Kiefer, T., Pflaumann, U., Hayes, A., Weinelt, M., Chen, M.-T., Mix, A. C., Barrows, T. T., Cortijo, E., Duprat, J., Juggins, S., and Waelbroeck, C.: Reconstruction of sea-surface temperatures from assemblages of planktonic foraminifera: multi-technique approach based on geographically constrained calibration data sets and its application to glacial Atlantic and Pacific Oceans, *Quaternary Sci. Rev.*, 24, 951–998, <https://doi.org/10.1016/j.quascirev.2004.07.014>, 2005.
- Küssner, K., Sarnthein, M., Lamy, F., and Tiedemann, R.: High-resolution radiocarbon based age records trace episodes of Zoophycos burrowing, *Marine Geol.*, 403, 48–56, <https://doi.org/10.1016/j.margeo.2018.04.013>, 2018.
- Küssner, K., Sarnthein, M., Michel, E., Mollenhauer, G., Siani G., and Tiedemann, R.: Glacial-to-deglacial reservoir ages of surface waters in the southern South Pacific, *Paleoceanography and Paleoclimatology*, 47, in review, 2021.
- Lamy, F. and Arz, H. W.: Community comment on “On the tuning of plateaus in atmospheric and oceanic ^{14}C records to derive calendar chronologies of deep-sea cores and records of ^{14}C marine reservoir age changes” by Edouard Bard and Timothy J. Heaton, *Clim. Past Discuss.*, <https://doi.org/10.5194/cp-2020-164-CC5>, 2021.
- Lamy, F., Arz, H. W., Kilian, R., Lange, C. B., Lembke-Jene, L., Wengler, M., Kaiser, J., Baeza-Urrea, O., Hall, I. R., Harada, N., and Tiedemann, R.: Glacial reduction and millennial-scale variations in Drake Passage throughflow, *Proc. Nat. Acad. Sci. USA*, 112, 13496–13501, 2015.
- Levin, I. and Hesshaimer, V.: Radiocarbon – A Unique Tracer of Global Carbon Cycle Dynamics, *Radiocarbon*, 42, 69–80, <https://doi.org/10.1017/S003822200053066>, 2000.
- Marchal, O., Stocker, T. F., and Muscheler, R.: Atmospheric radiocarbon during the Younger Dryas: production, ventilation, or both?, *Earth Planet. Sc. Lett.*, 185, 383–395, [https://doi.org/10.1016/S0277-3791\(03\)00171-9](https://doi.org/10.1016/S0277-3791(03)00171-9), 2001.

- Mekhaldi, F., Muscheler, R., Adolphi, F., Aldahan, A., Beer, J., McConnell, J. R., Possnert, G., Sigl, M., Svensson, A., Synal, H. A., Welten, K. C., and Woodruff, E. T.: Multiradionuclide evidence for the solar origin of the cosmic-ray events of AD 774/5 and 993/4, *Nat. Commun.*, 6, 8611, <https://doi.org/10.1038/ncomms9611>, 2015.
- Mekhaldi, F., Czymzik, M., Adolphi, F., Sjolte, J., Björck, S., Aldahan, A., Brauer, A., Martin-Puertas, C., Possnert, G., and Muscheler, R.: Radionuclide wiggle matching reveals a nonsynchronous early Holocene climate oscillation in Greenland and western Europe around a grand solar minimum, *Clim. Past*, 16, 1145–1157, <https://doi.org/10.5194/cp-16-1145-2020>, 2020.
- Michel, E. and Siani, G.: Community comment on “On the tuning of plateaus in atmospheric and oceanic ^{14}C records to derive calendar chronologies of deep-sea cores and records of ^{14}C marine reservoir age changes” by Edouard Bard and Timothy J. Heaton, *Clim. Past Discuss.*, <https://doi.org/10.5194/cp-2020-164-CC6>, 2021.
- Miyake, F., Nagaya, K., Masuda, K., and Nakamura, T.: A signature of cosmic-ray increase in AD 774–775 from tree rings in Japan, *Nature*, 486, 240–242, <https://doi.org/10.1038/nature11123>, 2012.
- Muscheler, R., Joos, F., Beer, J., Muller, S. A., Vonmoos, M., and Snowball, I.: Solar activity during the last 1000 yr inferred from radionuclide records, *Quaternary Sci. Rev.*, 26, 82–97, <https://doi.org/10.1016/J.Quascirev.2006.07.012>, 2007.
- Oeschger, H., Welten, M., Eicher, U., Möll, M., Riesen, T., Siegenthaler, U., and Wegmüller, S.: ^{14}C and other parameters during the Younger Dryas cold phase, *Radiocarbon* 22, 299–310, <https://doi.org/10.1017/S0033822200009590>, 1980.
- Reimer, P. J., Baillie, M. G. L., Bard, E., Bayliss, A., Beck, J. W., Blackwell, P. G., Bronk Ramsey, C., Buck, C. E., Burr, G. S., Edwards, R. L., Friedrich, M., Grootes, P. M., Guilderson, T. P., Hajdas, I., Heaton, T. J., Hogg, A. G., Hughen, K. A., Kaiser, K. F., Kromer, B., McCormac, F. G., Manning, S. W., Reimer, R. W., Richards, D. A., Southon, J. R., Talamo, S., Turney, C. S. M., van der Plicht, J., and Weyhenmeyer, C. E.: IntCal09 and Marine09 radiocarbon age calibration curves, 0–50 000 years cal BP, *Radiocarbon*, 51, 1111–1150, <https://doi.org/10.1017/S0033822200034202>, 2009.
- Reimer, P. J., Bard, E., Bayliss, A., Beck, J. W., Blackwell, P. G., Bronk Ramsey, C., Buck, C. E., Cheng, H., Edwards, R. L., Friedrich, M., Grootes, P. M., Guilderson, T. P., Hafflidason, H., Hajdas, I., Hatté, C., Heaton, T. J., Hoffmann, D. L., Hogg, A. G., Hughen, K. A., Kaiser, K. F., Kromer, B., Manning, S. W., Niu, M., Reimer, R. W., Richards, D. A., Scott, E. M., Southon, J. R., Staff, R. A., Turney, C. S. M., and van der Plicht, J.: IntCal13 and Marine13 Radiocarbon Age Calibration Curves 0–50 000 Years cal BP, *Radiocarbon*, 55, 1869–1887, https://doi.org/10.2458/azu_js_rc.55.16947, 2013.
- Reimer, P. J., Austin, W. E. N., Bard, E., Bayliss, A., Blackwell, P. G., Bronk Ramsey, C., Butzin, M., Cheng, H., Edwards, R. L., Friedrich, M., Grootes, P. M., Guilderson, T. P., Hajdas, I., Heaton, T. J., Hogg, A. G., Hughen, K. A., Kromer, B., Manning, S. W., Muscheler, R., Palmer, J. G., Pearson, C., van der Plicht, H., Reimer, R. W., Richards, D., Scott, E. M., Southon, J. R., Turney, C. S. M., Wacker, L., Adolphi, F., Büntgen, U., Capano, M., Fahrni, S., Fogtmann-Schulz, A., Friedrich, R., Kudsk, S., Miyake, F., Olsen, J., Reinig, F., Minoru Sakamoto, M., Sookdeo, A., and Talamo, S.: The IntCal20 Northern Hemisphere radiocarbon calibration curve (0–55 kcal BP), *Radiocarbon*, 62, 725–757, <https://doi.org/10.1017/RDC.2020.41>, 2020.
- Ritz, S. P., Stocker, T. F., and Müller, S. A.: Modeling the effect of abrupt ocean circulation change on marine reservoir age, *Earth Pl. Sc. Lett.*, 268, 202–211, <https://doi.org/10.1016/j.epsl.2008.01.024>, 2008.
- Sarnthein, M. and Grootes, P. M.: Community comment on “On the tuning of plateaus in atmospheric and oceanic ^{14}C records to derive calendar chronologies of deep-sea cores and records of ^{14}C marine reservoir age changes” by Edouard Bard and Timothy J. Heaton, *Clim. Past Discuss.*, <https://doi.org/10.5194/cp-2020-164-CC1>, 2021.
- Sarnthein, M. and Werner, K.: Early Holocene planktic foraminifers record species specific ^{14}C reservoir ages in Arctic Gateway, *Mar. Micropaleontol.*, 135, 45–55, <https://doi.org/10.1016/j.marmicro.2017.07.002>, 2017.
- Sarnthein, M., Grootes, P. M., Kennett, J. P., and Nadeau, M. J.: ^{14}C Reservoir ages show deglacial changes in ocean currents, in: *Ocean Circulation: Mechanisms and Impacts*, Geophysical Monograph Series 173, edited by: Schmittner, A., Chiang, J., and Hemming, S., American Geophysical Union, Washington, DC, USA, 175–197, 2007.
- Sarnthein, M., Grootes, P. M., Holbourn, A., Kuhnt, W., and Kühn, H.: Tropical warming in the Timor Sea led deglacial Antarctic warming and almost coeval atmospheric CO_2 rise by > 500 yr, *Earth Planet. Sc. Lett.*, 302, 337–348, <https://doi.org/10.1016/j.epsl.2010.12.021>, 2011.
- Sarnthein, M., Schneider, B., and Grootes, P. M.: Peak glacial ^{14}C ventilation ages suggest major draw-down of carbon into the abyssal ocean, *Clim. Past*, 9, 2595–2614, <https://doi.org/10.5194/cp-9-2595-2013>, 2013.
- Sarnthein, M., Balmer, S., Grootes, P. M., and Mudelsee, M.: Planktic and benthic ^{14}C reservoir ages for three ocean basins, calibrated by a suite of ^{14}C plateaus in the glacial-to-deglacial Suigetsu atmospheric ^{14}C record, *Radiocarbon*, 57, 129–151, https://doi.org/10.2458/azu_rc.57.17916, 2015.
- Sarnthein, M., Küssner, K., Grootes, P. M., Ausin, B., Eglinton, T., Muglia, J., Muscheler, R., and Schlolaut, G.: Plateaus and jumps in the atmospheric radiocarbon record – potential origin and value as global age markers for glacial-to-deglacial paleoceanography, a synthesis, *Clim. Past*, 16, 2547–2571, <https://doi.org/10.5194/cp-16-2547-2020>, 2020.
- Siani, G., Michel, E., De Pol-Holz, R., DeVries, T., Lamy, F., Carel, M., Isguder, G., Dewilde, F., and Lourantou, A.: Carbon isotope records reveal precise timing of enhanced Southern Ocean upwelling during the last deglaciation, *Nat. Commun.*, 4, 2758, <https://doi.org/10.1038/ncomms3758>, 2013.
- Singarayer, J. S., Richards, D. A., Ridgwell, A., Valdes, P. J., Austin, W. E. N., and Beck, J. W.: An oceanic origin for the increase of atmospheric radiocarbon during the Younger Dryas, *Geophys. Res. Lett.*, 35, L14707, <https://doi.org/10.1029/2008GL034074>, 2008.
- Skinner, L. C., Waelbroeck, C., Scrivner, A., and Fallon, S.: Radiocarbon evidence for alternating northern and southern sources of ventilation of the deep Atlantic carbon pool during the last deglaciation, *Proc. Natl. Acad. Sci. USA*, 111, 5480–5484, 2014.
- Skinner, L. C., Freeman, E., Hodell, D., Waelbroeck, C., Vazquez Riveiros, N., and Scrivner, A. E.: Atlantic Ocean ventila-

- tion changes across the last deglaciation and their carbon cycle implications, *Paleoceanography and Paleoclimatology*, 36, e2020PA004074, <https://doi.org/10.1029/2020PA004074>, 2021.
- Stocker, T. F. and Wright, D. G.: Rapid changes in ocean circulation and atmospheric radiocarbon, *Paleoceanography*, 11, 773–795, <https://doi.org/10.1029/96PA02640>, 1996.
- Stocker, T. F. and Wright, D. G.: The effect of a succession of ocean ventilation changes on ^{14}C , *Radiocarbon*, 40, 359–366, <https://doi.org/10.1017/S0033822200018233>, 1998.
- Svetlik, I., Jull, A., Molnár, M., Povinec, P., Kolář, T., Demján, P., Pachnerova Brabcova, K., Brychova, V., Dreslerová, D., Rybníček, M., and Simek, P.: The Best possible time resolution: How precise could a radiocarbon dating method be?, *Radiocarbon*, 61, 1729–1740, <https://doi.org/10.1017/RDC.2019.134>, 2019.
- Turney, C. S. M., Fifield, L. K., Hogg, A. G., Palmer, J. G., Hughen, K., Baillie, M. G. L., Galbraith, R., Ogden, J., Lorrey, A., Tims, S. G., and Jones, R. T.: The potential of New Zealand kauri (*Agathis australis*) for testing the synchronicity of abrupt climate change during the Last Glacial Interval (60 000–11 700 years ago), *Quat. Sci. Rev.*, 29, 3677–3682, 2010.
- Turney, C. S. M., Palmer, J., Bronk Ramsey, C., Adolphi, F., Muscheler, R., Hughen, K. A., Staff, R. A., Jones, R. T., Thomas, Z. A., and Fogwill, C. J.: High-precision dating and correlation of ice, marine and terrestrial sequences spanning Heinrich Event 3: Testing mechanisms of interhemispheric change using New Zealand ancient kauri (*Agathis australis*), *Quat. Sci. Rev.*, 137, 126–134, 2016.
- Umling, N. E. and Thunell, R. C.: Synchronous deglacial thermocline and deep-water ventilation in the eastern equatorial Pacific, *Nat. Commun.*, 8, 14203, <https://doi.org/10.1038/ncomms14203>, 2017.
- Waelbroeck, C., Lougheed, B. C., Vazquez Riveiros, N., Missiaen, L., Pedro, J., Dokken, T., Hajdas, I., Wacker, L., Abbott, P., Dumoulin, J. P., Thil, F., Eynaud, F., Rossignol, L., Fersi, W., Albuquerque, A. L., Arz, H., Austin, W. E. N., Came, R., Carlson, A. E., Collins, J. A., Dennielou, B., Desprat, S., Dickson, A., Elliot, M., Farmer, C., Giraudeau, J., Gottschalk, J., Henderiks, J., Hughen, K., Jung, S., Knutz, P., Lebreiro, S., Lund, D. C., Lynch-Stieglitz, J., Malaizé, B., Marchitto, T., Martínez-Méndez, G., Mollenhauer, G., Naughton, F., Nave, S., Nürnberg, D., Oppo, D., Peck, V., Peeters, F. J. C., Penaud, A., da Costa Portilho-Ramos, R., Repschläger, J., Roberts, J., Rühlemann, C., Salgueiro, E., Sanchez Goni, M. F., Schönfeld, J., Scussolini, P., Skinner, L. C., Skonieczny, C., Thornalley, D., Toucanne, S., Van Rooij, D., Vidal, L., Voelker, A. H. L., Wary, M., Weldeab, S., and Ziegler, M.: Consistently dated Atlantic sediment cores over the last 40 thousand years, *Scientific Data*, 6, 165, <https://doi.org/10.1038/s41597-019-0173-8>, 2019.
- Weninger, B.: Community comment on “On the tuning of plateaus in atmospheric and oceanic ^{14}C records to derive calendar chronologies of deep-sea cores and records of ^{14}C marine reservoir age changes” by Edouard Bard and Timothy J. Heaton, *Clim. Past Discuss.*, <https://doi.org/10.5194/cp-2020-164-CC4>, 2021.
- Weninger, B. and Edinborough, K.: Bayesian ^{14}C -rationality, Heisenberg Uncertainty, and Fourier Transform, *Doc. Praehist.*, 47, 536–559, 2020.