



This is a repository copy of *High oxide-ion conductivity in acceptor-doped Bi-based perovskites at modest doping levels.*

White Rose Research Online URL for this paper:
<https://eprints.whiterose.ac.uk/175966/>

Version: Supplemental Material

Article:

Li, L. orcid.org/0000-0002-9565-9830, Kler, J., West, A.R. orcid.org/0000-0002-5492-2102 et al. (2 more authors) (2021) High oxide-ion conductivity in acceptor-doped Bi-based perovskites at modest doping levels. *Physical Chemistry Chemical Physics*, 23 (19). pp. 11327-11333. ISSN 1463-9076

<https://doi.org/10.1039/d1cp01120k>

Reuse

This article is distributed under the terms of the Creative Commons Attribution-NonCommercial (CC BY-NC) licence. This licence allows you to remix, tweak, and build upon this work non-commercially, and any new works must also acknowledge the authors and be non-commercial. You don't have to license any derivative works on the same terms. More information and the full terms of the licence here:
<https://creativecommons.org/licenses/>

Takedown

If you consider content in White Rose Research Online to be in breach of UK law, please notify us by emailing eprints@whiterose.ac.uk including the URL of the record and the reason for the withdrawal request.



eprints@whiterose.ac.uk
<https://eprints.whiterose.ac.uk/>

Supplementary Information

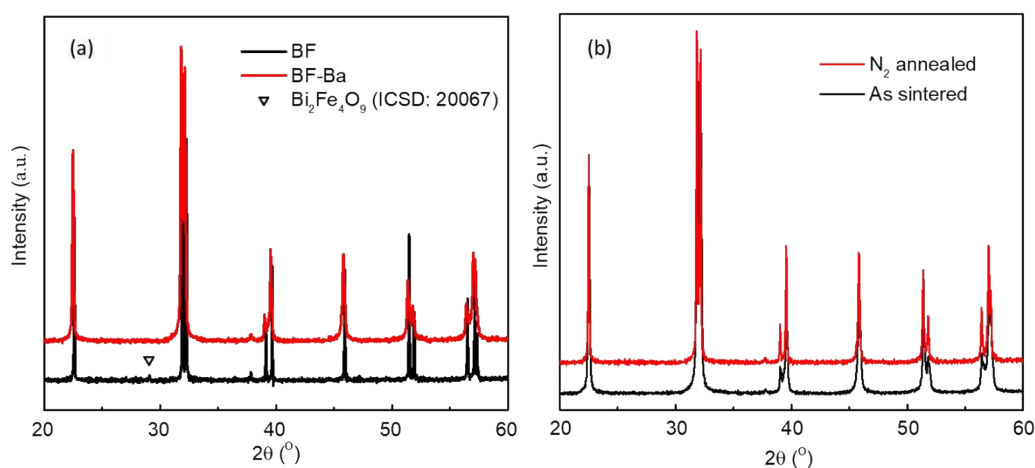


Figure S1. X-ray powder diffraction data for (a) Bi_{0.95}Ba_{0.05}FeO_{2.975} and BiFeO₃ and (b) as sintered and N₂ annealed Bi_{0.95}Ba_{0.05}FeO_{2.975} of crushed ceramics.

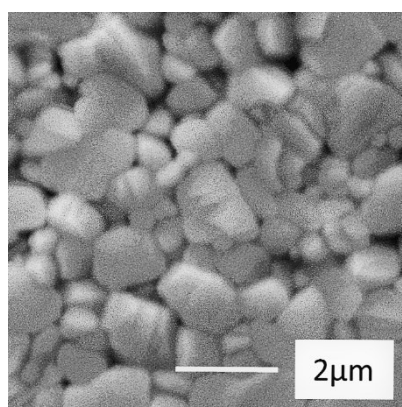


Figure S2. SEM secondary electron images for unpolished surface of Bi_{0.95}Ba_{0.05}FeO_{2.975}.

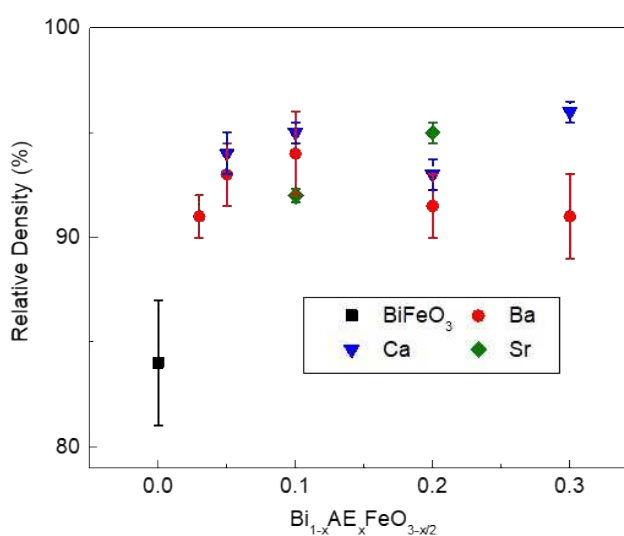


Figure S3. Relative density of BiFeO₃, Bi_{1-x}Ba_xFeO_{3-x/2}, Bi_{1-x}Sr_xFeO_{3-x/2} and Bi_{1-x}Ca_xFeO_{3-x/2} ceramics.