



UNIVERSITY OF LEEDS

This is a repository copy of *Development of an Arabic Food Composition Database for use in an Arabic online dietary assessment tool (myfood24)*.

White Rose Research Online URL for this paper:
<https://eprints.whiterose.ac.uk/175374/>

Version: Accepted Version

Article:

Bawajeeh, AO orcid.org/0000-0001-6415-8139, Kalendar, S, Scarpa, G et al. (10 more authors) (2021) Development of an Arabic Food Composition Database for use in an Arabic online dietary assessment tool (myfood24). *Journal of Food Composition and Analysis*, 102. 104047. ISSN 0889-1575

<https://doi.org/10.1016/j.jfca.2021.104047>

Reuse

This article is distributed under the terms of the Creative Commons Attribution-NonCommercial-NoDerivs (CC BY-NC-ND) licence. This licence only allows you to download this work and share it with others as long as you credit the authors, but you can't change the article in any way or use it commercially. More information and the full terms of the licence here: <https://creativecommons.org/licenses/>

Takedown

If you consider content in White Rose Research Online to be in breach of UK law, please notify us by emailing eprints@whiterose.ac.uk including the URL of the record and the reason for the withdrawal request.



eprints@whiterose.ac.uk
<https://eprints.whiterose.ac.uk/>

1 Development of an Arabic Food Composition Database for use in an Arabic 2 online dietary assessment tool (myfood24)

3 Areej O. Bawajeeh^{a,b,*}, Sondos Kalendar^{a,c}, Giulia Scarpa^d, Neil Hancock^e, Sarah Beer^f, Lauren
4 Gibson^f, Grace Williams^f, Basma Dashti^g, Salwa Albar^b, Hannah Ensaff^a, Michael A.
5 Zulyniak^a, Charlotte E. Evans^a, Janet E. Cade^a

6 ^a Nutritional Epidemiology Group, School of Food Science and Nutrition, University of Leeds, Leeds LS2 9JT, UK

7 ^b Department of Food and Nutrition, Faculty of Human Sciences and Design, King Abdulaziz University, Jeddah 3270,
8 Saudi Arabia

9 ^c Public Authority for Applied Education & Training, Kuwait

10 ^d School of Earth and Environment and School of Food Science and Nutrition, University of Leeds, Leeds LS2 9JT, UK

11 ^e School of Medicine, University of Leeds, Leeds LS29JT, UK

12 ^f Dietary Assessment Ltd., UK

13 ^g Kuwait Institute for Scientific Research, Kuwait

14 * Correspondence: fsaob@leeds.ac.uk

15 **Abstract:** A comprehensive food composition database (FCDB) is essential for assessing
16 dietary intake. However, currently available food composition data for Gulf Cooperation
17 Council countries (GCC) is limited. Our aim was to develop an Arabic FCDB of foods
18 commonly available in the GCC (initial focus on Saudi Arabia and Kuwait), which will be
19 integrated into an Arabic version of an online dietary assessment tool, myfood24. The Arabic
20 FCDB was built using a standardized approach identifying currently available foods from
21 existing food composition tables (FCTs), research articles, back-of-pack (BOP) nutrient labels
22 on food products, with additional generic food items from the UK Composition of Foods
23 Integrated Database (CoFID). The development of the FCDB used a 6-step approach: food
24 identification, cleaning, mapping, translation, allocating portion sizes, and quality checking.
25 The database includes a total of 2016 food items, 30% of which have standard portion size
26 images in addition to other options for portion size estimation. The database and myfood24
27 have been translated into Arabic to be suitable for Arabic users. These tools will help to assess
28 dietary intake for 51 million people in the GCC. Future work will cover more foods from other
29 Middle Eastern countries to serve over 400 million Arabic speakers in the region.

30 **Keywords:** food composition table, food composition database, myfood24, composite food,
31 Middle East, Arabic, dietary assessment tool

32 **1. Introduction**

33 Accurate food composition databases support quantification of nutrients consumed to
34 evaluate nutritional intakes (Foster et al., 2014). Food Composition Tables (FCTs) for Middle
35 Eastern foods are limited in terms of foods and nutrients (Al-Faris, 2017; Musayqar, 2006;
36 Pellet and Shadarevian, 1970; Sawaya et al., 1998). Researchers in Gulf Cooperation Council
37 (GCC) countries have used food composition databases (FCDB) from non-representative
38 populations/countries including the USDA (Al-Daghri et al., 2013; Alkazemi Dalal Usamah,
39 2019) but there is a need to develop a representative food database for these countries. A FCDB
40 should include a wide range of local and commonly consumed foods with a comprehensive
41 nutrient profile (Greenfield and Southgate, 2003). While the analysis of foods in a laboratory is
42 costly and time-consuming, the use of existing nutritional data is cost-effective to develop a
43 FCDB for countries with limited resources and data (Greenfield and Southgate, 2003).

44 Traditionally, interviewer-led, paper-based food frequency questionnaires (FFQ), food
45 diaries, dietary records, and 24-hour dietary recalls were used to collect food intakes (Carter et
46 al., 2016; Thompson and Subar, 2017). However, these methods are becoming outdated with
47 limitations: they are time-consuming and burdensome for both participants and interviewers
48 and experience potential under-reporting, measurement error and expense due to coding and
49 processing requirements (Conrad et al., 2018; Thompson and Subar, 2017; Touvier et al., 2010).
50 While large population-based studies have often favoured FFQs (Thompson et al., 2015), 24-

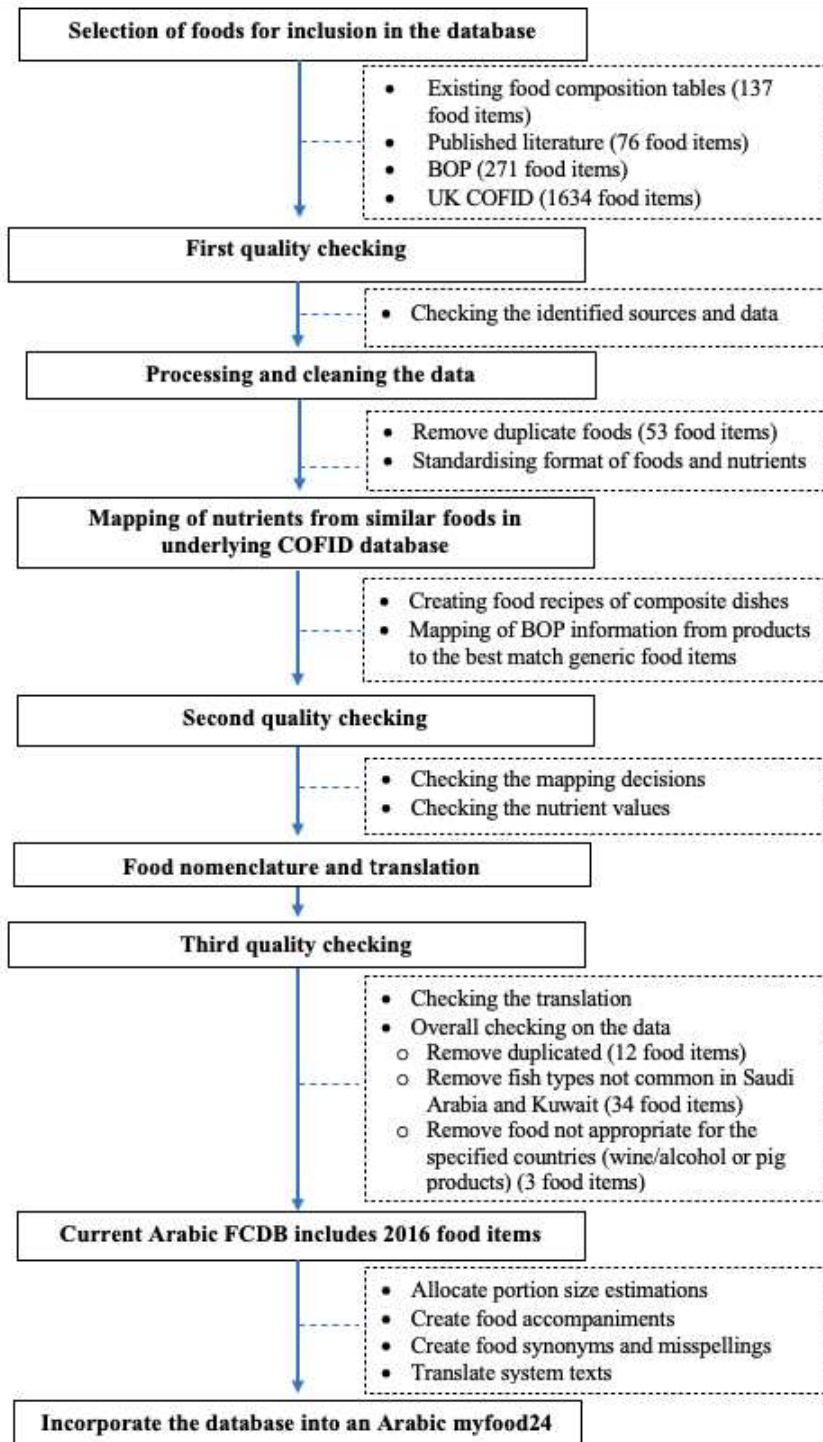
51 hour dietary recalls may be more accurate (Freedman et al., 2014). Furthermore, new web-
52 based systems offer advantages over traditional time-consuming techniques, allowing for self-
53 administered recalls (Cade, 2017; Eldridge et al., 2018; Foster et al., 2014; Zenun Franco et al.,
54 2018), without compromising on accuracy (Conrad et al., 2018; Koch et al., 2020; Park et al.,
55 2018; Wark et al., 2018a).

56 The online dietary assessment tool, myfood24, is a validated tool, initially developed for
57 the UK population (Albar et al., 2016; Carter et al., 2015; Wark et al., 2018b). The system is
58 supported by a comprehensive UK FCDB (~60k food items) which facilitates its use as a self-
59 reported 24-hour dietary recall or dietary record (Carter et al., 2016). The myfood24 system has
60 been adapted to different languages in terms of food database and its functions and layout and
61 there are currently Danish, Norwegian, French and German versions. There are more than 422
62 million Arabic speakers in the Middle East region (Boudad et al., 2018), yet there is no Arabic
63 web-based dietary assessment tool incorporating common foods for this population. Therefore,
64 we aimed to develop a FCDB of GCC foods, with a focus on Saudi Arabia and Kuwait, to be
65 incorporated into an Arabic version of myfood24. This paper illustrates the methods and
66 techniques used to develop the FCDB, which has been included in an Arabic version of
67 myfood24.

68 **2. Materials and Methods**

69 The development of the Arabic FCDB was undertaken in the following steps: food
70 identification, cleaning and processing of data, mapping procedure and quality checking. Then,

71 additional steps were undertaken to enable the inclusion of the database in the Arabic myfood24
 72 as seen in Figure 1.



73

74

Figure 1. A flow chart of developing the Arabic FCDB

75 ***2.1. Identification of foods for inclusion in the food composition database***

76 A literature search of Arabic and Middle Eastern foods and composition data was
77 conducted using: Medline, Web of Science, Saudi Digital Library (SDL), and Google Scholar
78 using different combinations of the keywords: "Arabic/Middle Eastern food composition
79 table/database". Searching involved both electronic and printed research articles and existing
80 FCTs. Most of the academic literature was freely available online, whereas FCTs were hard
81 copies obtained upon request.

82 Branded food products with back of pack (BOP) nutrition labels were identified for foods
83 frequently reported in national studies (Adam et al., 2014; Almajwal et al., 2018; Alsufiani et
84 al., 2015; Gosadi et al., 2017) and were available in local food stores. For example, dairy
85 products were frequently reported in national surveys; and we searched for these food products
86 on the websites and in-store of local retailers. To ensure a comprehensive database of foods and
87 complete nutritional information, we included generic foods (e.g., fruits, vegetables, spices,
88 etc.) from the UK food database (Public Health England, 2019).

89 The following sources were identified: (1) three existing FCTs ("Kuwaiti's
90 Composite Food Table" (Sawaya et al., 1998); "Food Composition Tables for Arab Gulf
91 Countries" (Musayqar, 2006) and "Food Composition for Use in the Middle East" (Pellet and
92 Shadarevian, 1970); (2) food composition from 9 published research articles (Al Jasser, 2015;
93 Al-Bahrany, 2002; Al-Faris, 2017; Al-Kanhhal et al., 1998, 1999; Assirey, 2015; Dashti et al.,
94 2004; Dashti et al., 2003a; Dashti et al., 2003b; Dashti et al., 2001); (3) back-of-pack (BOP)

95 label information; (4) generic food items from the UK Composition of Foods Integrated Dataset
96 (CoFID) (Public Health England, 2019).

97 Food identification was based on food names, synonyms, description, and ingredients
98 known to the target countries by local bilingual researchers (authors AB & SK). We included
99 foods relevant to the local population by including core commonly consumed foods (e.g., dairy
100 products, grain products, meats and poultry), composite foods and other less commonly
101 consumed items (e.g., regional types of fruit, vegetables, seafood, etc).

102 ***2.2. Cleaning and processing of the data***

103 The creation of the database followed the procedure and standards for creation of FCDB in
104 myfood24, and nutrients were defined in accordance with the requirements of myfood24 which
105 is based on the UK database (CoFID). Identified data were extracted from the original
106 identified sources into an Excel sheet for processing as follows: (1) Removing duplicate foods
107 with identical ingredients, cooking methods, and macronutrients. Where duplicates were
108 identified, foods with the most complete nutrient analysis were included (53 duplicate food
109 items were removed). If differences in ingredients or method of cooking were found, both food
110 items were kept (e.g., Dulmah and stuffed grape leaves are similar but differ in some
111 ingredients; Kofta (meatball) was included as both grilled and fried). (2) Reformatting of units
112 for some nutrients from existing tables/literature was undertaken to match the formats in
113 myfood24— e.g., vitamin D was converted from IU to µg. Also, some BOP values were
114 presented by portion size rather than per 100mL or per 100g, so values per 100mL or per 100g
115 were generated. (3) Missing values for some nutrients were calculated from other existing

116 nutrients. Total nitrogen was calculated by dividing protein from the original source by the
117 nitrogen conversion factor (6.25) (Greenfield and Southgate, 2003). Where carbohydrate was
118 missing, it was calculated by difference, subtracting the calories obtained from protein (4kcal/g)
119 and fat (9kcal/g) from the total calories. The calories provided by carbohydrate were then
120 divided by 4 to obtain a value in grams. For the fruit, dates, a staple item in the Middle East,
121 values of carbohydrate and calories were missing from local FCT. Carbohydrates were
122 estimated from the sugar values for dates obtained from an existing FCT (Greenfield and
123 Southgate, 2003), then total calories were calculated through the myfood24 system.

124 The definitions of nutrients in the current work are based on those stated in the UK FCDB
125 (CoFID) (Pinchen et al., 2021). For example, carbohydrate values were based on values for
126 total carbohydrate from the sum of analysed values for components of available carbohydrate
127 not including fibre. However, in case of missing data, they were calculated as explained above
128 for carbohydrate and energy.

129 Initial cleaning processes were applied to the 429 food items from the existing FCTs,
130 publications and BOP, while generic food items from the UK CoFID were already in the
131 required format and of appropriate quality.

132 ***2.3. Mapping procedure to generate nutrient values***

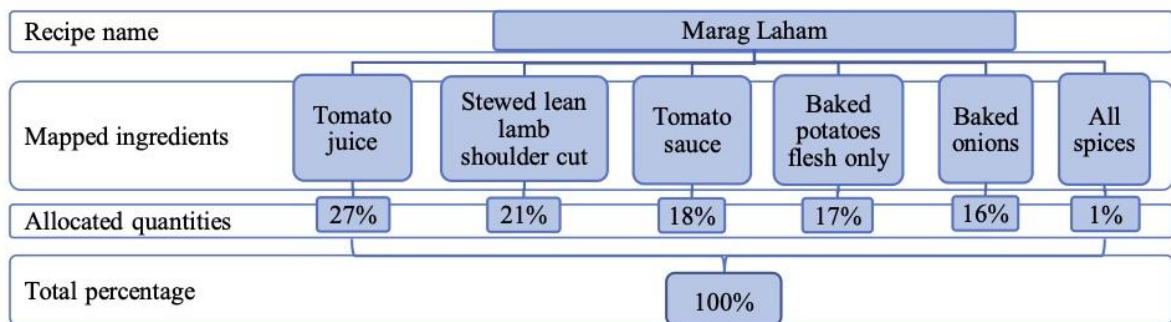
133 The mapping process was based on the approach used to create the UK food table
134 underlying myfood24 (Carter et al., 2016). The purpose was to assign available nutrients to the
135 foods in the database from existing published FCT/FCDB, and to generate values for missing

136 nutrients (mostly micronutrients) by matching to similar items from the UK FCDB (CoFID)
137 (Public Health England, 2019) using the myfood24 system.

138 Mapping was carried out using Microsoft Access. The mapping process generated nutrient
139 values for all nutrients, including those already available from the original sources, which
140 allowed us to ensure that our matching for nutrients was similar to the original. Mapping
141 involved matching foods, and the matching criteria was compliant to the FAO/INFOODS
142 guidelines for food matching (FAO/INFOODS, 2012b). During the mapping process, the
143 programme used (Carter et al., 2015) suggested a range of generic food items (available from
144 the built-in food database (CoFID)), and the researchers were able to make a decision to select
145 the most appropriate match. We ensured the results from mapping provided values close (no
146 more than 10% difference) to the original source values for water content, total calories and
147 macronutrients (grams of carbohydrate, protein and fat).

148 In order to calculate missing nutrients for composite foods using the mapping technique, we
149 used standard recipes from local recipe sources (Al-Qassar, 2012, 2016; AL-Turky, 2013;
150 Musali et al., 1990; Sawaya et al., 1998). To allocate nutrient values where these were missing,
151 we mapped recipes to cooked ingredients since the available nutrient data for the composite
152 foods we identified were for cooked foods . In order to get accurate quantities of cooked
153 ingredients, we applied yield factors from “*McCance and Widdowson's The Composition of*
154 *Foods*” (Finglas et al., 2015) from the raw ingredients (Finglas et al., 2015; Rand et al., 1991).
155 Water, as an ingredient had volumes adjusted to take into account the evaporation and/or
156 absorption while cooking (Bognár, 2002; Greenfield and Southgate, 2003). Each ingredient was

157 allocated a percentage contribution to the total recipe to enable generation of missing nutrient
 158 values using the myfood24 system. To illustrate an example, Marag Laham is a composite food
 159 that identified from the searched FCT, which had some missing nutrients. Thus, to generate
 160 values for these missing nutrients, we obtained the recipe (raw ingredients in grams). However,
 161 to ensure matching with the existing nutrient values from the identified FCT which were for the
 162 cooked item, with the values resulting from the mapping process, we mapped to cooked
 163 ingredients as seen in Figure 2. The figure illustrates mapping to cooked items (in % after
 164 applying yield factors). Since we mapped to cooked items, the water content was already taken
 165 into account with the tomato juice/sauce.



166
 167 Figure 2. Example of mapping for the composite food "Marag Laham" with the allocated
 168 percentages of each ingredient

169 In circumstances where a particular ingredient was not available within the existing UK
 170 myfood24 FCDB, a nearest sensible alternative item from the same food group similar in term
 171 of nutrient content was selected (e.g. Molokhiya, a local green leafy vegetable, was mapped to
 172 curly Kale). For some food items, we matched a combination of more than one item within the
 173 same food group to obtain the missing values (e.g. Akawi cheese was mapped to 70%
 174 Mozzarella and 30% Halloumi cheeses).

175 Branded products with declared back of pack nutrients information for energy,
 176 carbohydrate, sugar, protein, fat, saturated fat, trans fat, sodium were
 177 matched with similar generic food items to obtain a comprehensive set of nutrient values. For
 178 example, BOP values from a branded milk product were mapped to a milk item within the UK
 179 FCDB using the myfood24 system. Table 1 highlights some of the mapping decisions
 180 undertaken.

181 **Table 1.** Examples of mapping decisions for local foods and recipes to generate complete
 182 nutritional information

Food Item	Closest matched foods
Tannouri bread	100% nan bread
Molokhiya	100% curly Kale
Marag bamiah	44% Okra boiled in unsalted water, 9% onion fried in sunflower oil, 21% tomato puree, 1% Allspice ground, 1% tamarind pulp, 16% lean stewed lamb, 2% reduced fat tomato base, 1% puree garlic and 1% salt, 4% water
Makbos/Kabsa laham	63% basmati rice boiled, 5% chickpeas boiled, 3% raisin, 1% ground allspice, 19% grilled lamb chops, 8% sunflower oil & 1% salt
Balila	80% canned chickpeas, 1% cumin, 3% vinegar, 1% salt and 15% distilled water
Akawi cheese	70% Mozzarella and 30% Halloumi cheeses
Labnah	10% Yogurt powder and 90% Greek yogurt

183 **2.4. Food nomenclature and translation**

184 The Arabic FCDB was initially developed in English and then translated into Arabic.
 185 Translation was done in duplicate by two bilingual researchers (AB, SK), independently. All

186 foods identified were given a food name, a detailed description (e.g., source, processing type,
187 fat content, etc) and a unique numerical food identifier for inclusion in the database.

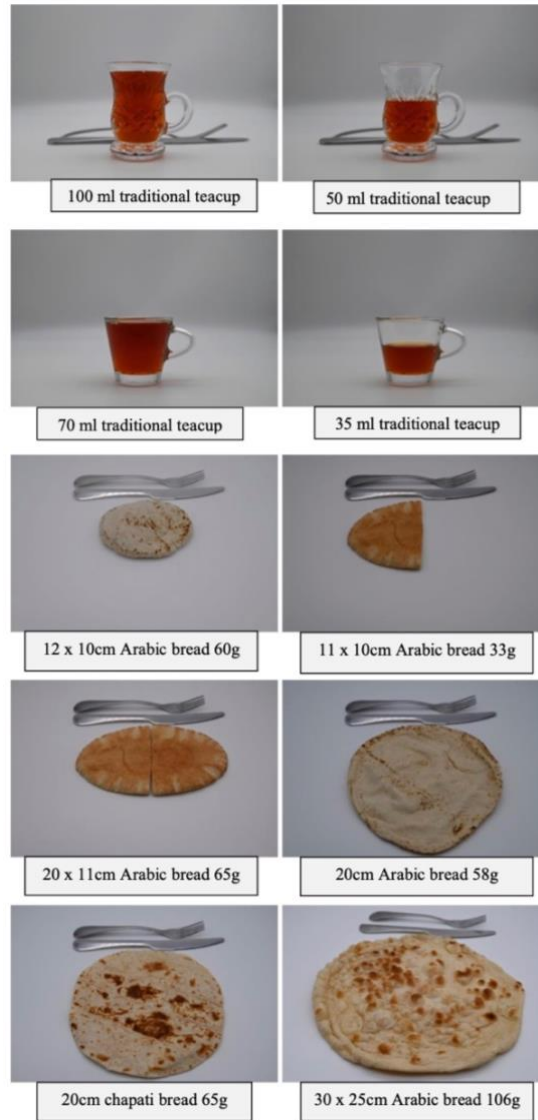
188 ***2.5. The Arabic myfood24 system***

189 The myfood24 system was established in its original English version for the UK
190 population in 2015 (Carter et al., 2015) with the option to create additional country/language-
191 specific versions of the tool. In order to create the Arabic version, an appropriate FCDB and
192 some additional features such as portion size estimation support and food accompaniments were
193 developed, which are described in this section. The next step involved translating the whole
194 database alongside the translation of the original text within myfood24, including the
195 administration side where projects are set up and the instructions for using the food diary, into
196 Arabic. The entire Arabic files were then returned to the myfood24 developer team for
197 construction of the Arabic version of myfood24.

198 199 *2.5.1. Portion size estimations*

200 We used multiple options for portion size estimations: portion size images, standard
201 household measurements (in cups and spoons), serving sizes of products from BOP labels, and
202 average portion sizes. We used 50 food images (each with 7 different portion sizes) from the
203 “*Young Person’s Food Atlas*” (Foster et al., 2010) within the current database. These ranges of
204 portions had previously been shown to cover all adult and adolescent portion sizes for the UK
205 (Carter et al., 2015). The previous UK food atlas (Nelson et al., 1997) has been used in the Abu
206 Dhabi Photographic Atlas of Food Portions (Al Marzooqi et al., 2015) and in other studies of
207 Middle Eastern populations (Ahmed et al., 2012; Dehghan et al., 2005), suggesting that portion

208 sizes are likely to be similar. Food portion images for a few additional items relevant to foods
209 in the current database were photographed (Figure 3) following training by a food photography
210 specialist based on standard guidelines (Abu Dhabi Food Control Authority., 2014; Foster et
211 al., 2010). The weights of the portion sizes for these items were based on the Abu Dhabi
212 Photographic Atlas of Food Portions (Abu Dhabi Food Control Authority., 2014). Some images
213 were used multiple times by allocating them to food items similar in terms of appearance and/or
214 composition (Al Marzooqi et al., 2015; Carter et al., 2016). For example, white rice portion
215 images were assigned to all rice dishes; stuffed grape leaves images were assigned to dolma
216 and stuffed cabbage.



217

218

Figure 3. Examples of food portion images created based on local foods

219

2.5.2. Food accompaniments

220

Prompting for any missing food accompaniments where a food item is commonly

221

consumed with another food is one of the features of myfood24. Thus, we created a list of food

222

accompaniments as seen in Table 2. For example, if dates were selected, prompts to add Arabic

223

coffee, yogurt and laban would occur automatically.

224

225 **Table 2.** Examples of food accompaniments

Food logged in as being consumed	Common food accompaniment prompts
Rice	Stewed dishes (e.g., stewed meats, vegetables and stuffed vegetables)
Bread	Peanut butter and jam, egg (e.g., omelette, boiled), and humus
Coffee and tea	Milk and sugar
Dates	Arabic coffee, yogurt and laban (kefir)

226 EANs (European Article Numbers) were used as unique identifiers in the myfood24
 227 database to uniquely identify foods and to prevent overstepping (i.e. one item replacing
 228 another). The Arabic database was given a unique EAN range, specific to this regional database.
 229 This allows portions and accompaniment information to be linked to the correct foods.

230 *2.5.3. Food synonyms and misspellings and system translation*

231 To facilitate searching for foods within the myfood24, synonyms of food names based on
 232 different dialects existing in Kuwait and Saudi Arabia (e.g. rice called "aish عيش" and "ruz
 233 رز") were added. Also, we included potential misspellings (e.g. potential misspellings of the
 234 word rice like ارز، أرز، ارز).

235 **2.6. Quality checking**

236 Quality checking procedures, compliant to FAO/INFOODS guidelines on checking data
 237 for inclusion in FCDB (FAO/INFOODS, 2012a), were applied throughout the process. Here
 238 we present the checking procedures applied in three stages.

239

240 *2.5.1 First quality checking stage*

241 The first stage of quality checking was conducted on the identified sources and foods
242 ensuring appropriateness and sufficiency of the data. For each source, data were extracted and
243 documented in an Excel sheet originally designed by the myfood24 team. Data required for
244 each food was the food name, synonyms, food descriptions, food category and nutrients. The
245 extracted data were checked against the original source to ensure that values were combined
246 and matched; and nutrients and values (units and denominators) had been included in the
247 database correctly. Also, data was checked for any missing values requiring generation of
248 nutrients by mapping.

249 *2.5.2. Second quality checking stage*

250 The second stage of quality checking was conducted after the mapping procedure. This
251 involved 1) checking the quantities and description of matched ingredients and decisions
252 relating to volume changes with cooked foods (e.g. pasta); 2) Checking and confirming matched
253 food selection for missing foods (e.g. Molokhiya); and 3) Checking all the nutrient values
254 resulting from the mapping. This stage was carried out by a nutritionist (SB), an expert in food
255 analysis (MR) and the local researchers. The local researchers independently calculated the
256 recipes and mapped foods to generate complete nutrient information. Subsequently, results
257 were checked with the nutritionist (SB), to ensure plausible nutrient values.

258 *2.5.3. Third quality checking stage*

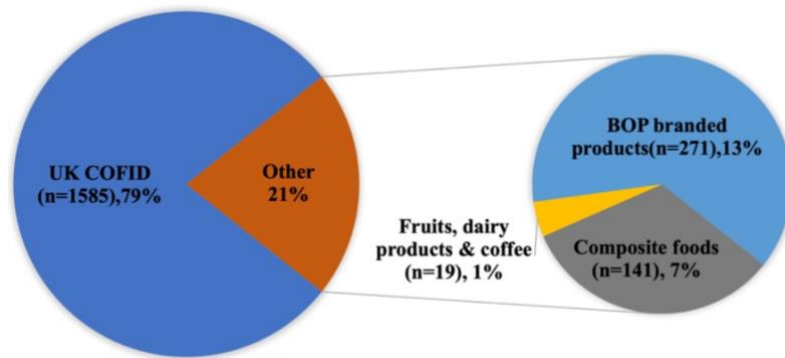
259 The final stage was performed after the translation by the native researchers to ensure all
260 translations (e.g., translation of food names, descriptions, components) were accurate. This
261 stage also involved checking that the synonyms and misspellings were sufficient to cover any

262 potential search terms within the Arabic myfood24 as well as checking the translations of
263 portion size units, system text, prompts and user instructions.

264 **3. Results**

265 The Arabic FCDB is comprised of food items consumed in Saudi Arabia and Kuwait. The
266 database includes in total, 2016 food items with their macronutrient and micronutrient data (120
267 nutrients available for all foods). A full list of nutrients can be seen in Table A.1 in the
268 Supplementary data. All data included are in either 100g or 100 mL edible proportion. About
269 30% of the food items in the Arabic FCDB were assigned portion size images in addition to
270 standard household measurements or serving sizes from BOP labels.

271 As shown in Figure 4, the majority, 79% (n=1585) of the data in the Arabic FCDB, were
272 generic items from the UK CoFID. The large percentage of foods included from the UK
273 database is due to the addition of generic food items such as meats, poultry, fruits, and
274 vegetables in addition to some commercial food items (e.g. nuts, biscuits, and puddings) and
275 condiments (e.g. spices, dressings, and sauces). These foods were chosen from the CoFID since
276 that database already has a complete set of nutrient information and whilst there may be some
277 regional variations, we wanted to include quality assessed standard information. There were
278 13% (n=271) foods with BOP label information for local and regional branded products in
279 Saudi Arabia and Kuwait. Food items from existing FCTs and research articles contributed 8%
280 (n=160) of the final database items. Out of these 160 items, 141 were composite foods and 19
281 items were local fruits (mostly dates), local dairy products and Arabic coffee drinks.



282

283

Figure 4. Sources of data for the new FCDB

284

285

286

287

288

289

290

Meat-based composite dishes represented the majority of the food items obtained from the existing FCTs and research publications followed by desserts and cereal-based foods, while most of the fruits included were dates (e.g. Ajwa, Sukkari, Khodari, Suqaey). The highest number of branded products included were dairy products. The majority of the branded products were from the largest dairy, bakery and confectionery and fast-food producers in the region. Tables A.2 in the Supplementary Materials shows the number and source of food items in the Arabic myfood24 FCDB.

291

292

293

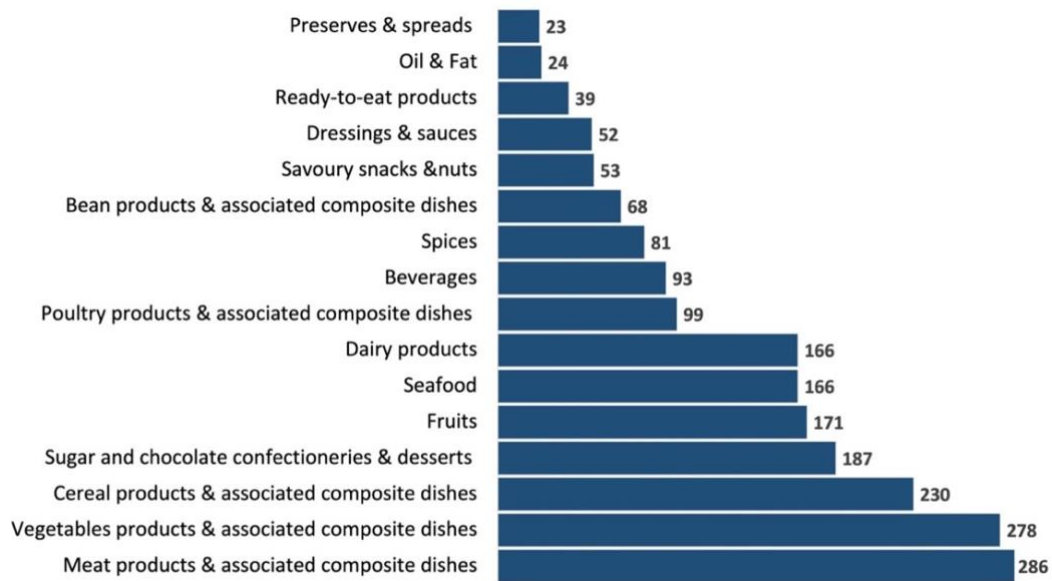
294

295

296

297

In total, as seen in Figure 5, the whole database included 14% of items from both meat products and dishes (n= 286) and vegetables and vegetable-based dishes (n=278); 11% of items were cereal products and associated dishes (n=230); 9% sweet-tasting foods (e.g., desserts and chocolate) (n=187); and 8% were fruits (n=171), seafood (n= 166), and dairy products (n=166). There were only 5% poultry products and associated dishes (n=99), 5% beverages (n=93), and 3% bean-based dishes (n=68), while 13% come from miscellaneous foods including spices (n=81), savoury snacks (n=53), sauces (n=52), ready-to-eat products (n=39) and oils (n=24)



298

299

Figure 5. Total number of foods included in the Arabic FCDB

300

Table 3 displays selected nutritional information for some of the most commonly consumed

301

foods. It can be seen from the examples in the table that the highest source of energy/100g

302

comes from high sugar foods like Basbousah (a dessert), dates, and cakes. The composite

303

savoury dishes illustrated are mostly eaten for lunch/dinner (e.g. Marag Laham, Margook and

304

Mandi) and are higher in protein and also sodium. Coffee and dairy products, mainly milk and

305

laban, are typically consumed on a daily basis. These items provide the lowest energy.

306

Sources of included data were scientific articles, existing regional FCTs, UK FCDB and

307

BOP food labels. Some missing data was found in the national and regional sources. Nutrients

308

to replace this missing data were estimated through the mapping procedure using the UK

309

database. The format of the data included, in terms of description, definition of components,

310

units and denominator, were in accordance with the UK database (CoFID) included in

311

myfood24, which we used for mapping and matching food items to complete missing values.

312 Results of the quality checking identified differences in the values of some micronutrients
313 (e.g. sodium, potassium, magnesium, phosphorus) as a result of the mapping when compared
314 with values reported in the identified sources for some composite dishes. Since the availability
315 of nutrient values was variable or missing from the local sources, we included values from UK
316 database through the mapping procedure to ensure a consistent and complete set of nutrient
317 value data. For the BOP food label, we matched the values of calories and macronutrients from
318 the label to matched items within the UK database, which resulted in similar matched values.
319 During the final quality checking, we identified and removed 12 duplicate foods and 3 food
320 items that included wine in its description (not suitable for the population of this version of the
321 FCDB). Also with a further search during translation, 34 types of fish unavailable locally were
322 removed.

323 **Table 3.** Examples of nutritional composition of chosen Middle Eastern foods included in the database

Food name	Nutrients/100g											
	Water (g)	Energy (kJ)	Protein (g)	Total fat (g)	CHO ¹ (g)	Fibre (AOAC) ² (g)	Vitamin C (mg)	Vitamin E (mg)	Vitamin B12 (µg)	Calcium (mg)	Sodium (mg)	Iron (mg)
Composite foods												
Marag laham (مرق لحم)	82.2	338	6.4	3.7	5.4	0.8	3.1	1.0	0.6	30	126	0.8
Margook (مرقوق)	75.9	422	5.1	2.8	12.9	1.5	2.4	0.3	0.4	22	90	1.0
Mandi rice & chicken (رز مندي بالدجاج)	56.6	556	8.2	4.6	15.4	0.4	0	0.5	0.0*	11	22	0.2
Basbousah (بسبوسة)	22.5	1401	3.9	6.9	64.4	1.4	0	1.0	0	17	7	0.9
Fruits (dates) and Arabic coffee drinks												
Sukkari date (تمر سكري)	14.2	1394	2.7	0.4	79.7	0	0	0	0	38	8	1.1
Coffee husk (قهوة قشر)	98.8	8	0.2	0	0.3	0	0	0.0*	0	2	0.0*	0.0*
BOP food products												
Laban full fat (لبن كامل الدسم)	88.14	251	3	3.3	4.7	0	0.6	0.5	0.1	120	48	0.1

¹ Carbohydrate

² "AOAC determinations include resistant starch and lignin in the estimation of total fibre, rather than only the non-starch polysaccharides" (Public Health England, 2019)

Milk long life (حليب طويل الاجل)	87.6	259	3.2	3.2	5.4	0	2	0.0*	0.9	120	42	0.0*
Chocolate cake (كيك بالشوكولاته)	17.6	1644	6.5	18.5	49.4	1.6	0	0.6	0.5	51	430	1.2

* Trace values

325 **4. Discussion**

326 This work describes the creation of an Arabic FCDB containing 2016 foods and its
327 integration into the online dietary assessment tool, myfood24, producing a unique Arabic online
328 dietary assessment tool.

329 Traditionally, creating a FCDB uses laboratory analysis providing high quality, reliable
330 data, however, this process is costly and time-consuming. Furthermore, analysing a wide range
331 of food items and composite dishes may not be possible (Marconi et al., 2018), and local tables
332 often present a limited number of nutrients (Merchant and Dehghan, 2006; Puwastien, 2002).
333 In our work, we used existing data and filled in missing data using a recipe calculation method
334 and mapping to generic items with complete nutrient data using the UK CoFID. To ensure
335 accurate values of nutrient content, we applied yield factors to raw ingredients in recipes since
336 we mapped to cooked ingredients (Greenfield and Southgate, 2003; Reinivuo et al., 2009).
337 Estimating nutrients based on recipe calculations has been done in European FCDBs within the
338 European Food Information Resource (EuroFIR) (Reinivuo et al., 2009) and is approved as an
339 alternative way of creating FCDB (Greenfield and Southgate, 2003; Machackova et al., 2018;
340 Marconi et al., 2018; Rand et al., 1991). A comparison of recipe calculation with laboratory
341 analysis, showed good agreement between the techniques for total calories and macronutrients
342 (Vasilopoulou et al., 2003), however, discrepancies in micronutrient values were reported
343 (Machackova et al., 2018; Marconi et al., 2018; Puwastien, 2002; Vasilopoulou et al., 2003).
344 Differences in these nutrients may be due to natural regional differences in agricultural factors

345 (e.g. crops breeding, soils, weather, and water) (Elobeid et al., 2014; Greenfield and Southgate,
346 2003; Marconi et al., 2018) or variations in food recipes and ingredients (particularly sodium
347 values due to using sodium phosphates rather than sodium chloride or due reformulation of salt
348 in products) (Adam et al., 2014; Elobeid et al., 2014; Jacobson et al., 2013; Kapsoketalou et al.,
349 2019; Machackova et al., 2018). Further differences may be due to methodological or
350 procedural differences between databases (Cromwell et al., 1999; Marconi et al., 2018;
351 Puwastien, 2002). These limitations can be generalised across all FCDBs. Developing a FCDB
352 based on existing FCTs substituting missing data using similar foods or more comprehensive
353 FCDBs/FCTs of other countries has been suggested as a method to use in enhancing food
354 composition databases (Leclercq et al., 2001). Using this approach, allowed us to have a
355 complete set of nutrients for each food item in our FCDB.

356 A representative FCDB in terms of the foods to be included is essential to obtain reliable
357 information, especially, to assess dietary intakes for a specific population (Leclercq et al.,
358 2001). The current work presents a national-level FCDB that contains composite dishes and
359 branded products that are commonly consumed by the populations of Saudi Arabia and Kuwait.
360 For example, rice dishes are the main food consumption pattern in the region that are consumed
361 on a daily basis with red meat or chicken (Adam et al., 2014; Al-Mssallem, 2014). Wheat is
362 also used as the main ingredient in traditional desserts (Al-Mssallem, 2014; Alfaris, 2018),
363 however, dates remain the main dessert food commonly consumed with Laban (kefir) or Arabic
364 coffee (Al-Mssallem, 2014). The majority of the BOP data in the Arabic FCDB was for dairy
365 products, popular in Saudi Arabia and Kuwait (Adam et al., 2014; Adam et al., 2019; Alkazemi

366 and Saleh, 2019). Dairy products in Saudi Arabia are produced locally (Adam et al., 2014), and
367 are exported to Africa and the other Middle Eastern countries (Almarai Company, 2017). Our
368 database also includes a variety of products (e.g. snacks, confectionery and frozen foods) from
369 one of the largest fast-food businesses in the Middle East with around 48% and 41% of its
370 products in the Kuwaiti and Saudi Arabian markets, respectively (Mehta and Lulla, 2016).
371 However, there are other common branded products missing in our database where BOP
372 information was not available. This is a common problem as it is not possible for FCTs to
373 include all foods made available in the markets with continued production of new products
374 (Leclercq et al., 2001). Thus, it will be important for researchers to build trust with food
375 companies and retailers to support food surveys through providing access to new products and
376 BOP nutritional information (Harrington et al., 2019; Kapsokafalou et al., 2019).

377 Branded products are updated regularly when regulations and formulation are changed (e.g.
378 reductions in sugar, salt or fat) (Concina et al., 2016; Kapsokafalou et al., 2019), or new
379 products are introduced (Black, 2017). This results in changes in nutrient content requiring the
380 FCDB to be kept up-to-date (Harrington et al., 2019; Kapsokafalou et al., 2019). Today's usage
381 of technology such as web-scraping, undertaken to create FoodDB in the UK (Harrington et al.,
382 2019), allows regular collection of data for a large number of local food products. This provides
383 up-to-date BOP data for branded products, overcoming limitations using traditional methods
384 that rely on contacting food suppliers, or visits to supermarkets (Harrington et al., 2019). Since
385 this technique was not available for our work, we obtained branded products' data by hand from
386 companies' websites and product BOP labels.

387 The current work created the Arabic FCDB containing Arabic composite dishes and
388 branded products available for Saudi Arabia and Kuwait, which has been integrated into an
389 Arabic version of the online dietary assessment tool, myfood24. This development was based
390 on the existing food databases available for these two countries following the same standard
391 approach used to create the food composition data for myfood24.

392 Our approach of mapping foods to items which had complete nutrient data from CoFID
393 allowed the missing nutritional information to be imputed. However, some nutrient values,
394 especially for micronutrients such as sodium, potassium, and calcium, may not accurately
395 reflect the composition of any single food. Whilst the aim for our database was to include all
396 relevant foods consumed in the region, due to limited national consumption data, limited pre-
397 existing tables and unavailability of data (e.g. other branded foods, fast food and local
398 restaurants) it is possible that some foods have been missed. These will be incorporated with
399 future updates to include more composite dishes and branded foods and expand it for other Gulf
400 and Middle Eastern countries.

401 **5. Conclusions**

402 The Arabic FCDB has been developed which includes 2016 items consisting of
403 composite foods, branded products, and generic foods that are commonly consumed in Saudi
404 Arabia and Kuwait. The database includes data on 120 nutrients for all foods and these have
405 been linked to multiple portion size options. The current work has been integrated into the fully
406 Arabic version of the online dietary assessment tool, myfood24; the first comprehensive online

407 tool designed to facilitate nutritional epidemiological studies and help in measuring dietary
408 intake of Arabic-speaking populations. Regular updates and expansion of the database are
409 planned to offer more food items from a wider range of Middle Eastern countries.

410

411 **Acknowledgments:** We would like to acknowledge Joan Ransley, in training and providing guidelines on taking
412 pictures of foods, and Miles Ratcliffe for his consultations during quality checking.

413 **Conflicts of Interest:** JEC, NH, SB, LG and GW are involved in Dietary Assessment Ltd.

414 **References**

- 415 Abu Dhabi Food Control Authority., (2014). A photographic atlas of food portions for the Emirate of Abu Dhabi.
416 ADFCA, Abu Dhabi www.adfca.ae.
- 417 Adam, A., Osama, S., Khan, I., (2014). Nutrition and Food Consumption Patterns in the Kingdom of Saudi Arabia.
418 Pakistan Journal of Nutrition 13(4), 181 - 190.
- 419 Adam, E.A., Azharia, A.E., Osama, A.S., (2019). Food Consumption Patterns and Trends in The Gulf Cooperation
420 Council. Pakistan Journal of Nutrition 18, 623-636.
- 421 Ahmed, W., Al-Murrani, W., Rees, G., (2012). Underreporting of Energy Intake in Iraqi People Living in the UK
422 According to Body Weight. Food and Nutrition Sciences 03.
- 423 Al Jasser, A.S.H., (2015). Nutritional Evaluation as Influenced by Cooking of Some Saudi Traditional Dishes, *Food
424 Science and Technology*. University of Khartoum. <http://khartoumspace.uofk.edu/handle/123456789/12733>,
425 <http://khartoumspace.uofk.edu/handle/123456789/12733>, p. 91.
- 426 Al Marzooqi, H.M., Burke, S.J., Al Ghazali, M.R., Duffy, E., Yousuf, M.H.S.A., (2015). The development of a food
427 atlas of portion sizes for the United Arab Emirates. Journal of Food Composition and Analysis 43, 140-148.
- 428 Al-Bahrany, A., (2002). Chemical Composition and Fatty Acid Analysis of Saudi Hassawi Rice *Oryza sativa* L.
429 Pakistan Journal of Biological Sciences (PJBS) 5(2), 212-214.
- 430 Al-Daghri, N.M., Khan, N., Alkharfy, K.M., Al-Attas, O.S., Alokail, M.S., Alfawaz, H.A., Alothman, A., Vanhoutte,
431 P.M., (2013). Selected dietary nutrients and the prevalence of metabolic syndrome in adult males and females in
432 Saudi Arabia: a pilot study. Nutrients 5(11), 4587-4604.
- 433 Al-Faris, N.A., (2017). Nutritional Evaluation of Selected Traditional Foods Commonly Consumed in Saudi Arabia.
434 Journal of Food and Nutrition Research 5(3), 168-175.
- 435 Al-Kanhal, M.A., Al-Mohizea, I.S., Al-Othaimeen, A.I., Khan, M.A., (1998). Nutritional evaluation of some legume-
436 based dishes consumed in Saudi Arabia. Int J Food Sci Nutr 49(3), 193-197.
- 437 Al-Kanhal, M.A., Al-Mohizea, I.S., Al-Othaimeen, A.I., Khan, M.A., (1999). Nutritive value of various breads in
438 Saudi Arabia. Int J Food Sci Nutr 50(5), 345-349.
- 439 Al-Mssallem, M.Q., (2014). The Association between the Glycaemic Index of Some Traditional Saudi Foods and the
440 Prevalence of Diabetes in Saudi Arabia: A Review Article. J Diabetes & Metab (JDM) 5(11), 1-7.
- 441 Al-Qassar, A., (2012). *Al-Qassar Kitchen* (1 ed). Alojary Library., Kuwait.
- 442 Al-Qassar, A., (2016). *Al-Qassar Kitchen* (3 ed). Alojary Library, Kuwait.
- 443 AL-Turky, G., (2013). *Al-Sufra* (1 ed). Saudi Publishing and Distribution Company, Saudi Arabia.
- 444 Albar, S.A., Alwan, N.A., Evans, C.E.L., Greenwood, D.C., Cade, J.E., (2016). Agreement between an online dietary
445 assessment tool (myfood24) and an interviewer-administered 24-h dietary recall in British adolescents aged 11-18
446 years. British Journal of Nutrition 115(9), 1678-1686.
- 447 Alfari, N., (2018). *Developing a Food Exchange List for Traditional Foods Commonly Consumed in Saudi Arabia*.
- 448 Alkazemi Dalal Usamah, Z., (2019). Adequacy of dairy product intake among children in Kuwait using a short
449 dietary assessment questionnaire. Nutrition & Food Science 49(1), 112-128.
- 450 Alkazemi, D.U.Z., Saleh, A., (2019). Adequacy of dairy product intake among children in Kuwait using a short
451 dietary assessment questionnaire. Nutrition & Food Science.
- 452 Almajwal, A., Al-zahrani, S., Abulmeaty, M., Alam, I., Razzak, S., Alqahtani, A., (2018). Development of Food
453 Frequency Questionnaire (FFQ) for the assessment of dietary intake among overweight and obese Saudi young
454 children. Nutrire 43(1), 29.

455 Almarai Company, (2017). Value through innovation, *Annual Report*, [https://www.almarai.com/wp-](https://www.almarai.com/wp-content/uploads/2018/04/Almarai-AR2017-ENG-web.pdf)
456 [content/uploads/2018/04/Almarai-AR2017-ENG-web.pdf](https://www.almarai.com/wp-content/uploads/2018/04/Almarai-AR2017-ENG-web.pdf), pp. 1-152.

457 Alsufiani, H.M., Yamani, F., Kumosani, T.A., Ford, D., Mathers, J.C., (2015). The relative validity and repeatability
458 of an FFQ for estimating intake of zinc and its absorption modifiers in young and older Saudi adults. *Public Health*
459 *Nutr* 18(6), 968-976.

460 Assirey, E.A.R., (2015). Nutritional composition of fruit of 10 date palm (*Phoenix dactylifera* L.) cultivars grown in
461 Saudi Arabia. *Journal of Taibah University for Science* 9(1), 75-79.

462 Black, R., (2017). Begin to imagine: Thoughts and considerations following the 39th NNDC. *Journal of Food*
463 *Composition and Analysis* 64, 143-144.

464 Bogнар, A., (2002). *Tables on weight yield of food and retention factors of food constituents for the calculation of nutrient*
465 *composition of cooked foods (dishes)*. Federal Research Institute for Nutrition (BFE),
466 <https://publikationen.bibliothek.kit.edu/9642002>.

467 Boudad, N., Faizi, R., Oulad Haj Thami, R., Chiheb, R., (2018). Sentiment analysis in Arabic: A review of the
468 literature. *Ain Shams Engineering Journal* 9(4), 2479-2490.

469 Cade, J.E., (2017). Measuring diet in the 21st century: use of new technologies. *Proc Nutr Soc* 76(3), 276-282.

470 Carter, M.C., Albar, S.A., Morris, M.A., Mulla, U.Z., Hancock, N., Evans, C.E., Alwan, N.A., Greenwood, D.C.,
471 Hardie, L.J., Frost, G.S., Wark, P.A., Cade, J.E., (2015). Development of a UK Online 24-h Dietary Assessment Tool:
472 myfood24. *Nutrients* 7(6), 4016-4032.

473 Carter, M.C., Hancock, N., Albar, S.A., Brown, H., Greenwood, D.C., Hardie, L.J., Frost, G.S., Wark, P.A., Cade, J.E.,
474 (2016). Development of a New Branded UK Food Composition Database for an Online Dietary Assessment Tool.
475 *Nutrients* 8(8).

476 Concina, F., Carletti, C., Pani, P., Knowles, A., Barbone, F., Parpinel, M., (2016). Development of a food composition
477 database to study complementary feeding: An Italian experience. *Journal of Food Composition and Analysis* 46,
478 96-102.

479 Conrad, J., Koch, S.A.J., Nöthlings, U., (2018). New approaches in assessing food intake in epidemiology. *Current*
480 *Opinion in Clinical Nutrition & Metabolic Care* 21(5), 343-351.

481 Cromwell, G.L., Calvert, C.C., Cline, T.R., Crenshaw, J.D., Crenshaw, T.D., Easter, R.A., Ewan, R.C., Hamilton, C.R.,
482 Hill, G.M., Lewis, A.J., Mahan, D.C., Miller, E.R., Nelszen, J.L., Pettigrew, J.E., Tribble, L.F., Veum, T.L., Yen, J.T.,
483 (1999). Variability among sources and laboratories in nutrient analyses of corn and soybean meal. *Journal of Animal*
484 *Science* 77(12), 3262-3273.

485 Dashti, B., Al-Awadi, F., AlKandari, R., Ali, A., Al-Otaibi, J., (2004). Macro- and microelements contents of 32
486 Kuwaiti composite dishes. *Food Chemistry* 85(3), 331-337.

487 Dashti, B., Al-Awadi, F., Khalafawi, M.S., Sawaya, W., Al-Amiri, H., (2003a). Soluble and insoluble dietary fibre in
488 thirty-two Kuwaiti dishes. *Food Chemistry* 83(4), 557-561.

489 Dashti, B., Al-Awadi, F., Sawaya, W., Al-Otaibi, J., Al-Sayegh, A., (2003b). Fatty acid profile and cholesterol content
490 of 32 selected dishes in the state of Kuwait. *Food Chemistry* 80(3), 377-386.

491 Dashti, B.H., Al-Awadi, F., Khalafawi, M.S., Al-Zenki, S., Sawaya, W., (2001). Nutrient contents of some traditional
492 Kuwaiti dishes: proximate composition, and phytate content. *Food Chemistry* 74(2), 169-175.

493 Dehghan, M., Al Hamad, N., Yusufali, A., Nusrath, F., Yusuf, S., Merchant, A.T., (2005). Development of a semi-
494 quantitative food frequency questionnaire for use in United Arab Emirates and Kuwait based on local foods.
495 *Nutrition Journal* 4, 18-18.

496 Eldridge, A.L., Piernas, C., Illner, A.K., Gibney, M.J., Gurinović, M.A., de Vries, J.H.M., Cade, J.E., (2018). Evaluation
497 of New Technology-Based Tools for Dietary Intake Assessment-An ILSI Europe Dietary Intake and Exposure Task
498 Force Evaluation. *Nutrients* 11(1).

499 Elobeid, T., Phoboo, S., Magdad, Z., (2014). Proximate and Mineral Composition of Indigenous Qatari Dishes:
500 Comparative Study with Similar Middle Eastern Dishes. *J. Food Chem. Nutr* 3(1), 2307-4124.

501 FAO/INFOODS, (2012a). FAO/INFOODS Guidelines for Checking Food Composition Data prior to the Publication
502 of a User Table/Database, Version 1.0. FAO, Rome.

503 FAO/INFOODS, (2012b). FAO/INFOODS Guidelines for Food Matching, Version 1.2. FAO, Rome.

504 Finglas, P.M., Roe, M.A., Pinchen, H.M., Berry, R., Church, S.M., Dodhia, S.K., Farron-Wilson, M., Swan, G., (2015).
505 *McCance and Widdowson's The Composition of Foods* (Seventh Summary ed). Royal Society of Chemistry: Cambridge,
506 UK.

507 Foster, E., Hawkins, A., Adamson, A., (2010). *Young Person's Food Atlas-Secondary*. Food Standards Agency,
508 London, UK.

509 Foster, E., Hawkins, A., Delve, J., Adamson, A.J., (2014). Reducing the cost of dietary assessment: Self-Completed
510 Recall and Analysis of Nutrition for use with children (SCRAN24). *Journal of Human Nutrition and Dietetics* 27(s1),
511 26-35.

512 Freedman, L.S., Commins, J.M., Moler, J.E., Arab, L., Baer, D.J., Kipnis, V., Midthune, D., Moshfegh, A.J.,
513 Neuhouser, M.L., Prentice, R.L., Schatzkin, A., Spiegelman, D., Subar, A.F., Tinker, L.F., Willett, W., (2014). Pooled
514 results from 5 validation studies of dietary self-report instruments using recovery biomarkers for energy and
515 protein intake. *American journal of epidemiology* 180(2), 172-188.

516 Gosadi, I.M., Alatar, A.A., Otayf, M.M., AlJahani, D.M., Ghabbani, H.M., AlRajban, W.A., Alrshed, A.M., Al-
517 Nasser, K.A., (2017). Development of a Saudi Food Frequency Questionnaire and testing its reliability and validity.
518 *Saudi Med J* 38(6), 636-641.

519 Greenfield, H., Southgate, D.A., (2003). *Food composition data: production, management, and use*. Food & Agriculture
520 Org.

521 Harrington, R.A., Adhikari, V., Rayner, M., Scarborough, P., (2019). Nutrient composition databases in the age of
522 big data: foodDB, a comprehensive, real-time database infrastructure. *BMJ Open* 9(6), e026652.

523 Jacobson, M.F., Havas, S., McCarter, R., (2013). Changes in Sodium Levels in Processed and Restaurant Foods, 2005
524 to 2011. *JAMA Internal Medicine* 173(14), 1285-1291.

525 Kapsokefalou, M., Roe, M., Turrini, A., Costa, H.S., Martinez-Victoria, E., Marletta, L., Berry, R., Finglas, P., (2019).
526 Food Composition at Present: New Challenges. *Nutrients* 11(8), 1714.

527 Koch, S.A.J., Conrad, J., Hierath, L., Hancock, N., Beer, S., Cade, J.E., Nöthlings, U., (2020). Adaptation and
528 Evaluation of Myfood24-Germany: A Web-Based Self-Administered 24-h Dietary Recall for the German Adult
529 Population. *Nutrients* 12(1), 160.

530 Leclercq, C., Valsta, L., Turrini, A., (2001). Food composition issues - Implications for the development of food-
531 based dietary guidelines. *Public Health Nutrition* 4, 677-682.

532 Machackova, M., Giertlova, A., Porubská, J., Roe, M., Ramos, C., Finglas, P., (2018). EuroFIR Guideline on
533 calculation of nutrient content of foods for food business operators. *Food Chem* 238, 35-41.

534 Marconi, S., Durazzo, A., Camilli, E., Lisciani, S., Gabrielli, P., Aguzzi, A., Gambelli, L., Lucarini, M., Marletta, L.,
535 (2018). Food Composition Databases: Considerations about Complex Food Matrices. *Foods* (Basel, Switzerland)
536 7(1), 2.

537 Mehta, A., Lulla, K., (2016). Kuwait Food Company (Americana): Financial Analysis. *South Asian Journal of*
538 *Business and Management Cases* 5(2), 168-180.

539 Merchant, A.T., Dehghan, M., (2006). Food composition database development for between country comparisons.
540 Nutrition Journal 5(1), 2.

541 Musali, Z., Alsuliman, S., Alharkan, S., (1990). *The Art of Saudi Kitchen* (1 ed). Women Renaissance Charitable
542 Association, Saudi Arabia.

543 Musayqar, A., (2006). *Food composition tables for Arab Gulf countries: Gulfoods* (1 ed). Arab Center for Nutrition,
544 Manama, Bahrain.

545 Nelson, M., Atkinson, M., Meyer, J., Ministry of Agriculture, F., Food, L., (1997). Food portion sizes : a user's guide
546 to the photographic atlas. Ministry of agriculture fisheries and food, UK.

547 Park, Y., Dodd, K.W., Kipnis, V., Thompson, F.E., Potischman, N., Schoeller, D.A., Baer, D.J., Midthune, D., Troiano,
548 R.P., Bowles, H., Subar, A.F., (2018). Comparison of self-reported dietary intakes from the Automated Self-
549 Administered 24-h recall, 4-d food records, and food-frequency questionnaires against recovery biomarkers. The
550 American Journal of Clinical Nutrition 107(1), 80-93.

551 Pellet, P.L., Shadarevian, S., (1970). *Food composition Tables for use in the Middle East* (2 ed). American University of
552 Beirut, Beirut.

553 Pinchen, H., Powell, N., Church, S., Finglas, P., (2021). McCance and Widdowson's The Composition of Foods
554 Integrated Dataset 2021, User guide, in: England, P.H. (Ed.). Public Health England,
555 [https://assets.publishing.service.gov.uk/government/uploads/system/uploads/attachment_data/file/971021/McCa
556 nce_and_Widdowsons_Composition_of_Foods_integrated_dataset_2021.pdf](https://assets.publishing.service.gov.uk/government/uploads/system/uploads/attachment_data/file/971021/McCa_nce_and_Widdowsons_Composition_of_Foods_integrated_dataset_2021.pdf).

557 Public Health England, (2019). McCance and Widdowson's composition of foods integrated dataset (CoFID),
558 gov.uk <https://www.gov.uk/government/publications/composition-of-foods-integrated-dataset-cofid>.

559 Puwastien, P., (2002). Issues in the development and use of food composition databases. Public Health Nutr 5(6a),
560 991-999.

561 Rand, W.M., Pennington, J.A., Murphy, S.P., Klensin, J.C., (1991). *Compiling data for food composition data bases*. The
562 United Nations University, Japan, United Nations University Press.

563 Reinivuo, H., Bell, S., Ovaskainen, M.-L., (2009). Harmonisation of recipe calculation procedures in European food
564 composition databases. Journal of Food Composition and Analysis 22(5), 410-413.

565 Sawaya, W.N., Al-awadi, F., Eid, N., Dashti, B.H., (1998). *Food Composition of Kuwaiti Composite Dishes (phase I, II,
566 AND III)*. Kuwait Institute of Scientific Research (KISR), Kuwait.

567 Thompson, F.E., Dixit-Joshi, S., Potischman, N., Dodd, K.W., Kirkpatrick, S.I., Kushi, L.H., Alexander, G.L.,
568 Coleman, L.A., Zimmerman, T.P., Sundaram, M.E., Clancy, H.A., Groesbeck, M., Douglass, D., George, S.M., Schap,
569 T.E., Subar, A.F., (2015). Comparison of Interviewer-Administered and Automated Self-Administered 24-Hour
570 Dietary Recalls in 3 Diverse Integrated Health Systems. American journal of epidemiology 181(12), 970-978.

571 Thompson, F.E., Subar, A.F., (2017). Chapter 1 - Dietary Assessment Methodology, in: Coulston, A.M., Boushey,
572 C.J., Ferruzzi, M.G., Delahanty, L.M. (Eds.), *Nutrition in the Prevention and Treatment of Disease (Fourth Edition)*.
573 Academic Press, pp. 5-48.

574 Touvier, M., Kesse-Guyot, E., Méjean, C., Pollet, C., Malon, A., Castetbon, K., Hercberg, S., (2010). Comparison
575 between an interactive web-based self-administered 24 h dietary record and an interview by a dietitian for large-
576 scale epidemiological studies. British Journal of Nutrition 105(7), 1055-1064.

577 Vasilopoulou, E., Georga, K., Grilli, E., Linardou, A., Vithoulka, M., Trichopoulou, A., (2003). Compatibility of
578 computed and chemically determined macronutrients and energy content of traditional Greek recipes. Journal of
579 Food Composition and Analysis 16(6), 707-719.

580 Wark, P.A., Hardie, L.J., Frost, G.S., Alwan, N.A., Carter, M., Elliott, P., Ford, H.E., Hancock, N., Morris, M.A.,
581 Mulla, U.Z., Noorwali, E.A., Petropoulou, K., Murphy, D., Potter, G.D.M., Riboli, E., Greenwood, D.C., Cade, J.E.,

582 (2018a). Validity of an online 24-h recall tool (myfood24) for dietary assessment in population studies: comparison
583 with biomarkers and standard interviews. *BMC Medicine* 16(1), 136.
584 Wark, P.A., Hardie, L.J., Frost, G.S., Alwan, N.A., Carter, M., Elliott, P., Ford, H.E., Hancock, N., Morris, M.A.,
585 Mulla, U.Z., Noorwali, E.A., Petropoulou, K., Murphy, D., Potter, G.D.M., Riboli, E., Greenwood, D.C., Cade, J.E.,
586 (2018b). Validity of an online 24-h recall tool (myfood24) for dietary assessment in population studies: comparison
587 with biomarkers and standard interviews. *BMC Med* 16(1), 136.
588 Zenun Franco, R., Fallaize, R., Lovegrove, J.A., Hwang, F., (2018). Online dietary intake assessment using a
589 graphical food frequency app (eNutri): Usability metrics from the EatWellUK study. *PLoS One* 13(8), e0202006.
590

Table A.1. List of nutrients in the Arabic FDB

Nutrients included in the Arabic FCDB			
Total solids (g)	Thiamin (mg)	cis-Monounsaturated fatty acids/100g Food (g)	Delta-5-avenasterol (mg)
Nitrogen conversion factor	Riboflavin (mg)	Monounsaturated fatty acids per 100g fatty acids (g)	Delta-7-avenasterol (mg)
Glycerol conversion factor	Niacin (mg)	Monounsaturated fatty acids per 100g food (g)	Delta-7-stigmastenol (mg)
Water (g)	Tryptophan/60 (mg)	cis-Polyunsaturated fatty acids /100g FA (g)	Stigmasterol (mg)
Total nitrogen (g)	Niacin equivalent (mg)	cis-Polyunsaturated fatty acids /100g Food (g)	Citric acid (g)
Protein (g)	Vitamin B6 (mg)	Polyunsaturated fatty acids per 100g fatty acids (g)	Malic acid (g)
Fat (g)	Vitamin B12 (µg)	Polyunsaturated fatty acids per 100g food (g)	LEnergy (kcal)
Carbohydrate (g)	Folate (µg)	Saturated fatty acids excluding branch per 100 g fatty acid (g)	LEnergy (kJ)
Energy (kcal)	Pantothenate (mg)	Saturated fatty acids excluding branch per 100 g food (g)	LProtein (g)
Energy (kJ)	Biotin (µg)	Total branched chain per 100g fatty acid (g)	LCarbohydrate (g)
Starch (g)	Vitamin C (mg)	Total branched chain per 100g food (g)	LTotals Sugars (g)
Oligosaccharide (g)	All-trans-retinol (µg)	Total Trans fatty acids per 100g fatty acids (g)	LStarch (g)
Total sugars (g)	13-cis-retinol (µg)	Total Trans fatty acids per 100g food (g)	Sodium (mg)
Glucose (g)	Dehydroretinol (µg)	Tetradecanoic acid C14:0 per 100g fatty acids (g)	Potassium (mg)
Galactose (g)	Retinaldehyde (µg)	Hexadecanoic acid C16:0 per 100g fatty acids (g)	Calcium (mg)
Fructose (g)	Alpha-carotene (µg)	Tetradecanoic acid C14:0 per 100g food (g)	Magnesium (mg)
Sucrose (g)	Beta-carotene (µg)	Hexadecanoic acid C16:0 per 100g food (g)	Phosphorus (mg)
Maltose (g)	Cryptoxanthins (µg)	cis n-6 C20:3 Eicosatrienoic acid per 100g fatty acids (g)	Iron (mg)
Lactose (g)	Lutein (µg)	cis n-6 C20:4 Eicosatetraenoic acid per 100g fatty acids (g)	Copper (mg)
Alcohol (g)	Lycopene (µg)	cis n-3 C20:5 Eicosapentaenoic acid per 100g fatty acids (g)	Zinc (mg)
Non-starch polysaccharide (NSP) (g)	25-hydroxy vitamin D3 (µg)	cis n-3 C22:6 Docosahexaenoic acid (DHA) per 100g FA (g)	Chloride (mg)
AOAC fibre (g)	Cholecalciferol (µg)	cis n-6 C20:3 Eicosatrienoic acid per 100g food (g)	Manganese (mg)
Cholesterol (mg)	5-mehtyl folate (µg)	cis n-3 C20:5 Eicosapentaenoic acid per 100g food (g)	Selenium (µg)
Saturated fatty acids per 100g fatty acids (g)	Alpha-tocopherol (mg)	cis n-3 C22:6 Docosahexaenoic acid (DHA) per 100g food (g)	Iodine (µg)

Saturated fatty acids per 100g food (g)	Beta-tocopherol (mg)	Total Phytosterols (mg)	Retinol (µg)
Total n-6 polyunsaturated fatty acids per 100g fatty acid (g)	Delta-tocopherol (mg)	Other Cholesterol and Phytosterols (mg)	Carotene (µg)
Total n-6 polyunsaturated fatty acids per 100g food (g)	Gamma-tocopherol (mg)	Phytosterol (mg)	Retinol Equivalent (µg)
Total n-3 polyunsaturated fatty acids per 100g fatty acid (g)	Alpha-tocotrienol (mg)	Beta-sitosterol (mg)	Total Vitamin D (µg)
Total n-3 polyunsaturated fatty acids per 100g food (g)	Delta-tocotrienol (mg)	Brassicasterol (mg)	Total Vitamin E (mg)
cis-Monounsaturated fatty acids /100g FA (g)	Gamma-tocotrienol (mg)	Campesterol (mg)	Phylloquinone - Vitamin K1 (µg)

Table A.2. Detailed number of food items in the Arabic FDB

Existing Middle Eastern publications (160 items)		UK myfood24 FCDB (1585 items)	
Food category	Number of foods	Food category	Number of foods
Meat-based dishes	37	Meats (beef and lamb)	222
Desserts	32	Vegetables	250
Cereal-based dishes	29	Fruits	159
Vegetable-based dishes	13	Seafood	148
Seafood-based dishes	12	Chicken, turkey, eggs	89
Fruit	12	Spices	81
Chicken-based	10	Biscuits & cakes	77
Bean-based dishes	10	Dairy	61
Dairy products	5	Beans	58
Branded products (271 items)		Savoury snacks & nuts	53
Food category	Number of foods	Dressings & sauces	48
Dairy products	100	Bread & flour	38
Cakes & Biscuits	37	Juices & drinks	36
Juices	29	Cereals & porridge	34
Croissants and pies	19	Pasta & noodles	33
Breads	18	Soups	33
Frozen meat products	15	Oils & ghee	22
Cereal, pasta & noodles	9	Chocolate & candies	21
Processed meat	8	Pastries & pies	20
Spreads	7	Coffee & tea	19
Flours	6	Rice & couscous	17
Ready-to-eat products	6	Syrup, honey & jams	16
Seafood product	6	Jelly & puddings	15
Sauces	4	Salads	14
Frozen burgers	4	Soda/Carbonated	7
Oil/Fat	2	Cheesecakes & tarts	7
Frozen vegetables	1	Pizza	7