



UNIVERSITY OF LEEDS

This is a repository copy of *Predicting 30-day mortality after ST elevation myocardial infarction: Machine learning- based random forest and its external validation using two independent nationwide datasets.*

White Rose Research Online URL for this paper:

<https://eprints.whiterose.ac.uk/174644/>

Version: Accepted Version

Article:

Hadanny, A, Shouval, R, Wu, J orcid.org/0000-0001-6093-599X et al. (8 more authors) (2021) Predicting 30-day mortality after ST elevation myocardial infarction: Machine learning- based random forest and its external validation using two independent nationwide datasets. *Journal of Cardiology*, 78 (5). pp. 439-446. ISSN 0914-5087

<https://doi.org/10.1016/j.jjcc.2021.06.002>

Crown Copyright © 2021 Published by Elsevier Ltd on behalf of Japanese College of Cardiology.. This manuscript version is made available under the CC-BY-NC-ND 4.0 license <http://creativecommons.org/licenses/by-nc-nd/4.0/>.

Reuse

This article is distributed under the terms of the Creative Commons Attribution-NonCommercial-NoDerivs (CC BY-NC-ND) licence. This licence only allows you to download this work and share it with others as long as you credit the authors, but you can't change the article in any way or use it commercially. More information and the full terms of the licence here: <https://creativecommons.org/licenses/>

Takedown

If you consider content in White Rose Research Online to be in breach of UK law, please notify us by emailing eprints@whiterose.ac.uk including the URL of the record and the reason for the withdrawal request.



eprints@whiterose.ac.uk
<https://eprints.whiterose.ac.uk/>

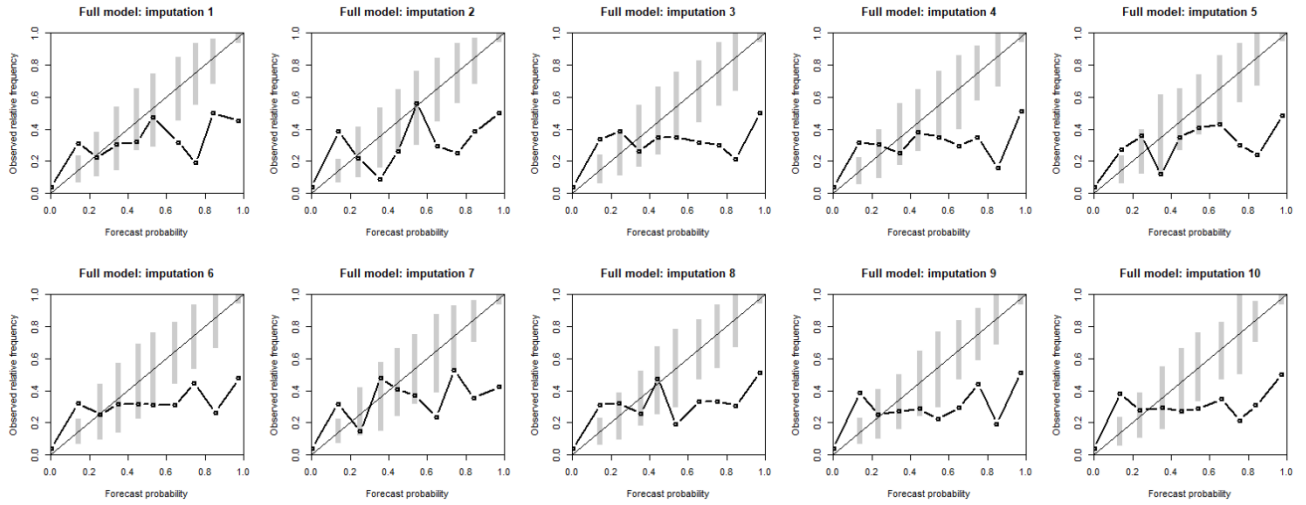
Supplementary

[Author: Please define all abbreviations]

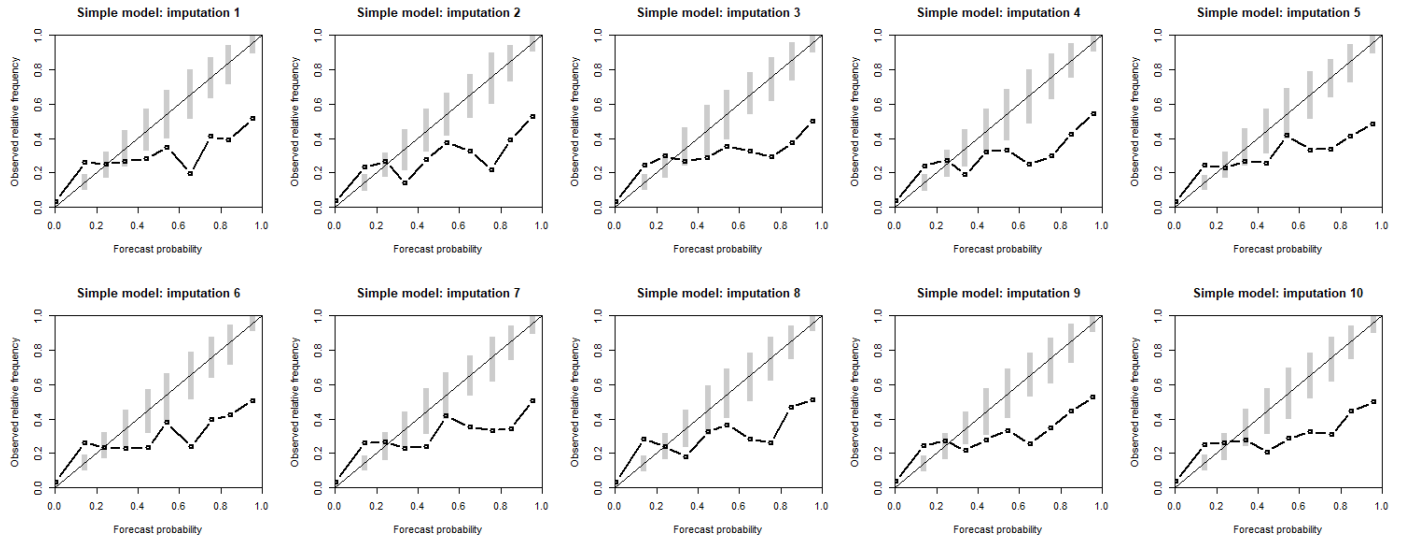
Online Table S1 [Discrimination sensitivity analysis on 10 imputed datasets \(multiple imputation\)](#).

Full model	Simple model	GRACE
0.805	0.792	0.772
0.807	0.788	0.774
0.805	0.793	0.756
0.806	0.788	0.767
0.806	0.791	0.755
0.806	0.791	0.773
0.805	0.791	0.757
0.811	0.791	0.755
0.803	0.788	0.773
0.805	0.794	0.768

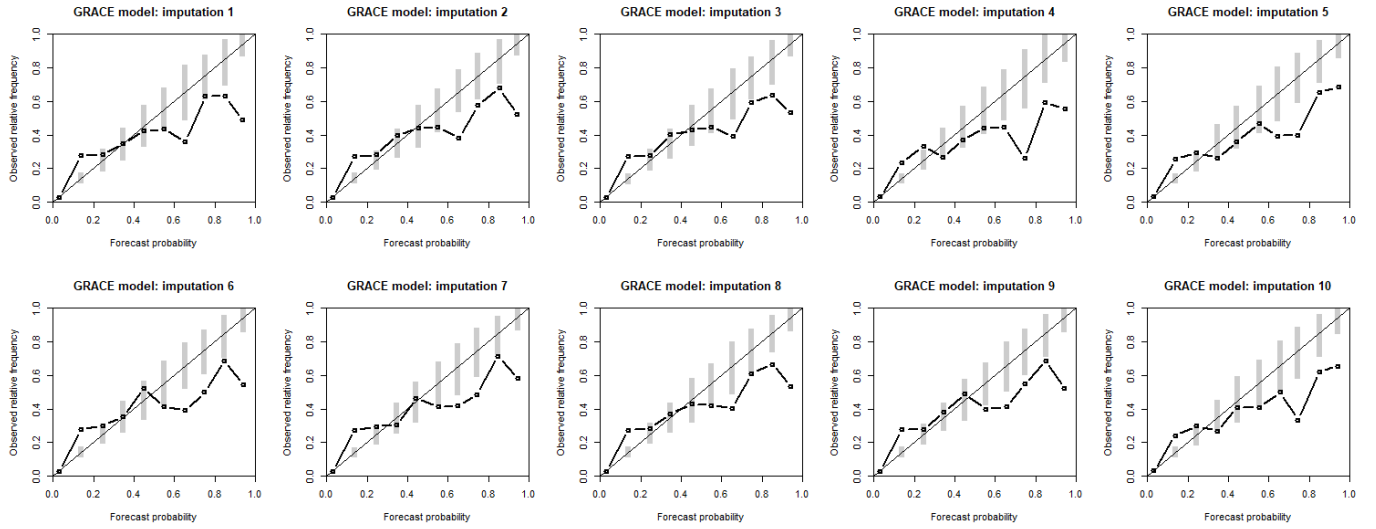
Online Figure-S1: Full model calibration on the multiple imputation datasets of the MINAP.



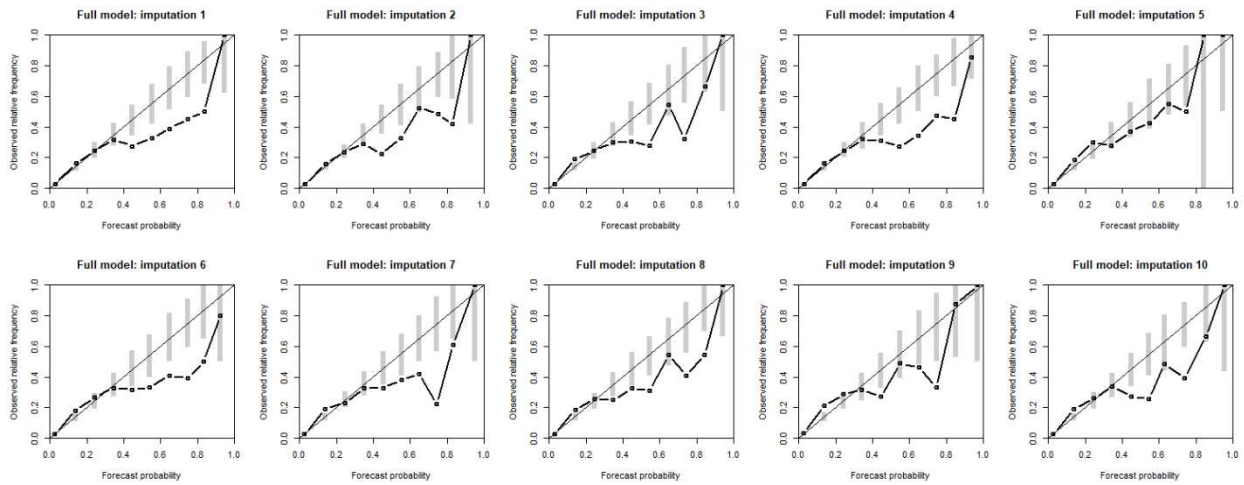
Online Figure S2 Simple model calibration on multiple imputation datasets of the MINAP.



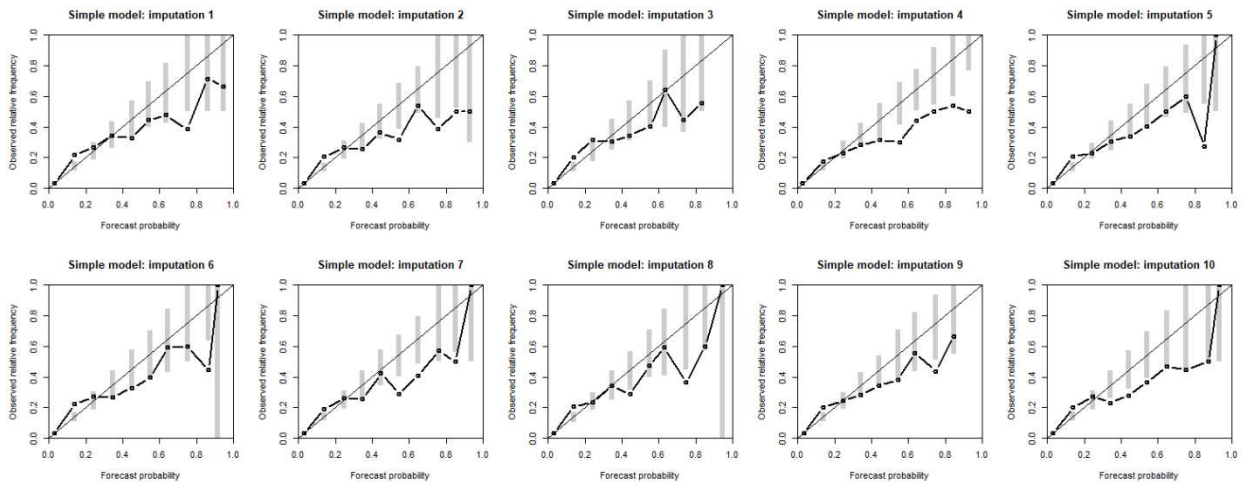
Online Figure S3 **GRACE model calibration on the multiple imputation datasets of the MINAP.**



Online Figure S4 Full model re-calibration plots on the multiple imputation datasets of the MINAP.



Online Figure S5 Simple model re-calibration plots on the multiple imputation datasets of the MINAP.



Online Figure S6 GRACE score re-calibration plots on the multiple imputation datasets of the MINAP.

