



This is a repository copy of *Remote ischaemic conditioning for stroke: unanswered questions and future directions*.

White Rose Research Online URL for this paper:
<https://eprints.whiterose.ac.uk/173734/>

Version: Published Version

Article:

Baig, S., Moyle, B., Nair, K.P.S. et al. (3 more authors) (2021) Remote ischaemic conditioning for stroke: unanswered questions and future directions. *Stroke and Vascular Neurology*, 6 (2). ISSN 2059-8688

<https://doi.org/10.1136/svn-2020-000722>

Reuse

This article is distributed under the terms of the Creative Commons Attribution-NonCommercial (CC BY-NC) licence. This licence allows you to remix, tweak, and build upon this work non-commercially, and any new works must also acknowledge the authors and be non-commercial. You don't have to license any derivative works on the same terms. More information and the full terms of the licence here:
<https://creativecommons.org/licenses/>

Takedown

If you consider content in White Rose Research Online to be in breach of UK law, please notify us by emailing eprints@whiterose.ac.uk including the URL of the record and the reason for the withdrawal request.



eprints@whiterose.ac.uk
<https://eprints.whiterose.ac.uk/>

Remote ischaemic conditioning for stroke: unanswered questions and future directions

Sheharyar Baig,¹ Bethany Moyle,¹ Krishnan Padmakumari Sivaraman Nair,² Jessica Redgrave,¹ Arshad Majid,³ Ali Ali ^{4,5}

To cite: Baig S, Moyle B, Nair KPS, *et al.* Remote ischaemic conditioning for stroke: unanswered questions and future directions. *Stroke & Vascular Neurology* 2021;**0**. doi:10.1136/svn-2020-000722

► Prepublication history and additional material is published online only. To view please visit the journal online (<http://dx.doi.org/10.1136/svn-2020-000722>).

Received 29 October 2020

Revised 13 January 2021

Accepted 31 January 2021



© Author(s) (or their employer(s)) 2021. Re-use permitted under CC BY-NC. No commercial re-use. See rights and permissions. Published by BMJ.

¹Cerebrovascular Medicine, The University of Sheffield Institute for Translational Neuroscience, Sheffield, UK

²Neurosciences, Sheffield Teaching Hospitals NHS Foundation Trust, Sheffield, UK

³Faculty of Medicine and Dentistry, University of Sheffield, Sheffield, UK

⁴Geriatrics and Stroke Medicine, Sheffield Teaching Hospitals NHS Foundation Trust, Sheffield, UK

⁵Sheffield NIHR Biomedical Research Centre, The University of Sheffield, Sheffield, UK

Correspondence to

Dr Ali Ali; ali.ali@sheffield.ac.uk

ABSTRACT

Remote ischaemic conditioning (RIC) refers to a process whereby periods of intermittent ischaemia, typically via the cyclical application of a blood pressure cuff to a limb at above systolic pressure, confers systemic protection against ischaemia in spatially distinct vascular territories. The mechanisms underlying this have not been characterised fully but have been shown to involve neural, hormonal and systemic inflammatory signalling cascades. Preclinical and early clinical studies have been promising and suggest beneficial effects of RIC in acute ischaemic stroke, symptomatic intracranial stenosis and vascular cognitive impairment. Through systematic searches of several clinical trials databases we identified 48 active clinical trials of RIC in ischaemic stroke, intracerebral haemorrhage and subarachnoid haemorrhage. We summarise the different RIC protocols and outcome measures studied in ongoing clinical trials and highlight which studies are most likely to elucidate the underlying biological mechanisms of RIC and characterise its efficacy in the near future. We discuss the uncertainties of RIC including the optimal frequency and duration of therapy, target patient groups, cost-effectiveness, the confounding impact of medications and the absence of a clinically meaningful biomarker of the conditioning response. With several large clinical trials of RIC expected to report their outcomes within the next 2 years, this review aims to highlight the most important studies and unanswered questions that will need to be addressed before this potentially widely accessible and low-cost intervention can be used in clinical practice.

INTRODUCTION

Remote ischaemic conditioning (RIC) refers to the process by which cycles of temporary ischaemia, typically through the application of a manual or electronic tourniquet to a limb at above systolic blood pressure, confers a systemic protection against future ischaemic injuries in remote vascular territories.¹ The concept of ischaemic conditioning as a protective technique was described by Murry *et al* who found that 5 min cycles of occlusion and reperfusion of canine circumflex arteries repeated 4 times (4×5 mins) prior to

experimental myocardial infarction in the same arterial territory led to a 25% reduction in myocardial infarct size compared with controls.² Subsequently brief episodes of the same ischaemic conditioning protocol applied to the circumflex artery was found to have protective properties when the experimental infarct was induced in a different arterial territory³—RIC. It was later discovered that applying similar sublethal episodes of ischaemic to remote organs⁴ or a limb,⁵ also offered protection to subsequent ischaemic or reperfusion injury, not only to the heart, but to other organs including liver,⁶ kidneys⁷ and brain.⁸ These findings have led to the investigation of its use in cerebrovascular disease.

The timing of RIC in relation to ischaemia and subsequent reperfusion defines the terms preconditioning (RIPreC), perconditioning (RIPerC) and postconditioning (RIPostC) (figure 1). The protective effect of ischaemic conditioning occurs at different time frames: the acute effect is induced immediately and lasts 2 hours while the delayed protection occurs at 12–24 hours, lasting upto 48–72 hours.⁹ Furthermore, repeated cycles of RIC (chronic RIC) may induce distinct adaptations that influence stroke recurrence and recovery.^{10 11}

A small number of studies have investigated the use of RIC in acute and chronic stroke,^{12–19} and have been summarised in recent review articles.^{20 21} However, there is a rapidly evolving research landscape with multiple ongoing clinical trials that, when completed and published, will have a significant impact on understanding the utility of RIC in stroke. Here, we outline the ongoing clinical trials investigating RIC in acute and chronic stroke, expand on the key remaining research questions, comprehensively detail the remaining barriers to translation into clinical practice

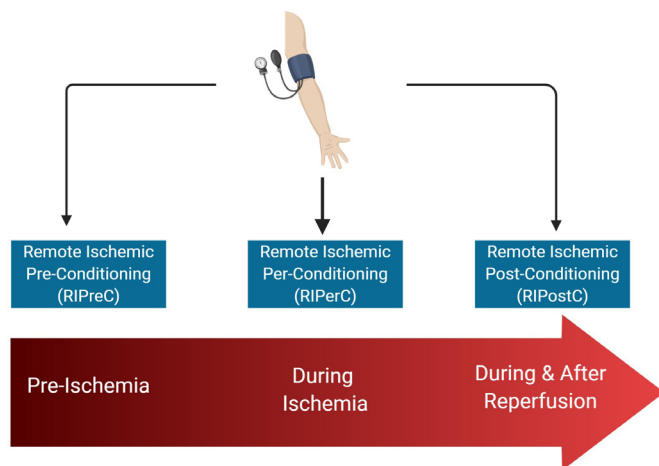


Figure 1 Model of remote ischaemic conditioning.

and make practice recommendations for future clinical trial design.

METHODS

We searched the following trials registries/journals (25 August 2020) for ongoing or completed trials of RIC in stroke:

1. ClinicalTrials.gov (<https://clinicaltrials.gov/>).
2. WHO International Clinical Trials Registry Platform (<https://www.who.int/ictrp/search/en/>).
3. ISRCTN Registry (<https://www.isrctn.com/>).
4. European Union Clinical Trials Register (<https://www.clinicaltrialsregister.eu/>).
5. BioMedCentral Trials Journal (<https://trialsjournal.biomedcentral.com/>).
6. Chinese Clinical Trials Registry (www.chictr.org.cn).

Search terms included ‘ischaemic conditioning’ and ‘stroke’. In the Chinese Clinical Trials Registry ‘conditioning’ was used as a search term to widen results. Further studies were identified from previous published articles and citation searches.

Active studies were included if the RIC intervention (cycles of temporary upper or lower limb ischaemia) was being studied in patients with stroke (ischaemic or haemorrhagic stroke), transient ischaemic attack or subarachnoid haemorrhage. Completed studies were included if they met the search criteria above but had not yet published the full results.

Studies were labelled as having an ‘Unknown’ status if: (1) the study status was not available on the relevant clinical trials registry or (2) more than 2 years elapsed since the estimated completion date, without publication of results or trial registry update and (3) no email correspondence was received from chief investigator of the study.

Relevant studies

We identified 48 studies investigating RIC in stroke (online supplemental material). After analysing the trial

protocols for each study, we determined that the RIC intervention is being studied in three distinct time frames:

1. RIPreC—the administration of RIC prior to a surgical or endovascular procedure where there is a significant risk of stroke.
2. RIPerC and/or early remote ischaemic postconditioning (Early RIPostC)—the administration of RIC in the hours to days after the onset of an acute stroke (ischaemic, haemorrhagic or subarachnoid haemorrhage)
3. Chronic remote RIPostC (Chronic RIC)—the administration of repeated cycles of RIC for weeks to months in patients with a history of stroke.

Table 1 summarises the variety of populations, RIC protocols, outcome measures and estimated completion dates of ongoing clinical trials in RIC. A more detailed summary of individual studies can be found in online supplemental material.

RIPreC: The use of RIPreC is a clinical application of the classic paradigm of ischaemic preconditioning whereby a period of temporary ischaemia induces protective changes which reduce the impact of future sustained ischaemic insults.^{22 23} While the majority of strokes cannot be predicted, there are several clinical settings in which an ischaemic or haemorrhagic stroke is a potential consequence of a surgical or endovascular procedure, for example, prior to treating cerebral aneurysms,²⁴ carotid endarterectomy and carotid artery stenting.²⁵

Three studies are investigating the potential benefit of RIPreC in reduction of ischaemic stroke or vasospasm after surgical and endovascular treatment of unruptured cerebral aneurysms (NEAT - NCT03496415; RIPAT - NCT02162654²⁶; NCT03814850; online supplemental material).

The largest of these studies (NEAT - NCT03496415), from China, aims to recruit 210 participants from multiple centres, with unruptured intracranial aneurysms, randomising them to bilateral upper limb RIPreC at 200 mm Hg or sham RIPreC at 60 mm Hg prior to neuroendovascular therapies (ET). The primary outcome measure of this study is the presence and volume of new DWI lesions on MRI within 72 hours of ET, while secondary outcomes include day 7 stroke severity (NIHSS score) and cerebrovascular events and modified Rankin Scale (mRS) at 30 days. Importantly, the participant, care provider, investigator and outcomes assessor are all masked to group allocation. The results from this study will indicate whether RIPreC has a potential role as an adjunct for elective aneurysm repair.

The RIPAT study (NCT02162654)²⁶ aims to enhance our biomechanistic understanding of the potential benefits of RIPreC before treatment of unruptured aneurysms. This prospective, double-masked explorative trial in Austria, will randomise 48 individuals with asymptomatic intracranial aneurysms to RIPreC (3×5 min cycles in the upper arm at 200 mm Hg) or sham RIPreC (3×5 min cycles in the upper arm at 10 mm Hg), while measuring inflammatory cytokines associated with the conditioning response (S100 calcium-binding protein B (S100B),

Table 1 Summary characteristics of ongoing trials of RIC in stroke

Parameter		No of studies		
Study population	Ischaemic stroke/TIA	31		
	Symptomatic intracranial stenosis	8		
	Aneurysmal subarachnoid haemorrhage	4		
	Unruptured cerebral aneurysm	3		
	Intracerebral haemorrhage	3		
Timing of conditioning	RIPreC	3		
	RIPerC and early RIPostC	28		
	Chronic RIPostC	16		
	Unspecified	1		
Participants (N)	<100	24		
	100–500	17		
	501–1000	4		
	>1000	3		
RIC protocol	Cuff pressure	180mm Hg	2	
		200mm Hg	26	
		225mm Hg	2	
		20mm Hg >SBP	4	
		30mm Hg >SBP	2	
		50mm Hg >SBP	1	
		110mm Hg >SBP	1	
		Variable	1	
	Cycle length	Unspecified	9	
		3 min	1	
		5 min	36	
		10 min	1	
		Variable	1	
		Unspecified	9	
		Cycle frequency	3	5
			4	16
			5	19
			Variable	1
			Unspecified	7
		Limb	Upper	36
Lower	5			
Unspecified	7			
Unilateral	18			
Bilateral	16			
Unspecified	14			
Study location	Asia	30		
	Europe	10		
	North America	8		
Primary outcome measures	Clinical	modified Rankin Scale	6	
		Compliance/feasibility	6	
		Adverse events	6	
		Recurrent stroke	4	
		Combined vascular events	1	

Continued

Table 1 Continued

Parameter		No of studies
	All-cause mortality	1
	NIHSS	1
	Walking speed	1
	Depression incidence	1
Blood samples	Serum biomarkers	5
	Immune profile	2
	Coagulation profile	1
Radiological	Infarct size/growth	6
	New infarcts	2
	Cerebral blood flow/collateral circulation	3
	Vasospasm	2
	Flow-mediated dilatation	1
Other	P300 event-related potential	1
	Cardiac function (echocardiogram)	1
Estimated study completion	2019	11
	2020	10
	2021	8
	2022	5
	2023	0
	2024	3

RIC, remote ischaemic conditioning; RPerC, Remote ischaemic preconditioning; RPostC, Remote ischaemic postconditioning; RPreC, Remote ischaemic preconditioning; SBP, systolic blood pressure; TIA, Transient Ischaemic Attack.

Matrix Metalloproteinase 9 (MMP 9), Glial Fibrillar Acidic Protein (GFAP), Myelin Basic Protein, Neuron-Specific Enolase). Ischaemic lesions (number and volume) will be measured by DWI MRI at 12–48 hours post-treatment, with clinical outcomes (NIHSS and mRS) and neuropsychological testing measured at 6 and 12 months. A caveat to this study is that two different procedures (endovascular coiling and surgical clipping) are being used which may bias results. The current status of this trial is unknown, however, the results are of significant interest in developing our understanding of the temporal nature of the inflammatory cascade that follows RPreC and assessing its potential impact on the development of peri-interventional ischaemia.

RPerC and early RPostC

We identified 28 studies investigating RPerC and early RPostC as an adjunct to hyperacute stroke care (online supplemental material). Putative beneficial mechanisms of RIC in this hyperacute setting include increased cerebral blood flow (CBF) and perfusion of the ischaemic penumbra.²⁷ The primary aims for many of these studies are to establish whether RPerC and/or early RPostC is safe and can reduce stroke severity assessed by clinical and radiological indicators. Alongside this, several studies are investigating the feasibility of hyperacute RIC alongside intravenous thrombolysis (SERICT-AIS - NCT04027621²⁸; rTPA-RIC - NCT02886390; rTPA-RIC1 - NCT03231384;

TRIPCAIS - NCT03218293) and ET (PROTECT-I - NCT03915782; REVISE-2 - NCT03045055; RICE-PAC - NCT03152799). While the most trials are investigating whether RIC in ischaemic stroke, a subset of studies are investigating RIC in intracerebral haemorrhage and subarachnoid haemorrhage (online supplemental material).

The largest study of RIC in acute stroke in Europe, the Danish RESIST trial (NCT03481777) will randomise 1500 participants (baseline mRS ≤ 2) presenting within 4 hours of symptom onset with a prehospital putative stroke (combined Cincinnati Prehospital Stroke Scale and Postural Assessment Scale for Stroke) to RPerC/sham in the prehospital phase and RPostC/sham after 6 hours in confirmed cases of acute ischaemic or haemorrhagic stroke. The active arm involves 5×5 min cycles of unilateral upper arm occlusion at 200 mm Hg (or 35 mm Hg above SBP if baseline SBP is >175 mm Hg) while sham occlusion pressure rests at 20 mm Hg. The primary outcome measure of 3 month mRS will be supplemented with composite cardiovascular event rates at 3 months and 1 year, as well as quality of life measures and hospital bed-day use. Participants at the central site will also be randomised to RPostC or sham RPostC twice daily for 7 days to facilitate an assessment of the incremental effect of repeated doses of RIC. In a subset of patients, the investigators will also assess the impact of RIC on DWI infarct growth at 24 hours (in ischaemic stroke)

and haematoma expansion on CT (in haemorrhagic stroke).

Other studies, such as RICAMIS (NCT03740971; 1800 participants) and SERIC-AIS in China (NCT03669653; 912 participants), REMOTE-CAT in Spain (NCT03375762; 572 participants) and RESCUE-BRAIN in France (NCT02189928; 200 participants),²⁹ will be of significant value in determining the relative efficacy of RIC in hyperacute stroke in different populations. However, there are important methodological differences in the study populations, inclusion criteria, timing and duration of RIC, and endpoints that may preclude the reliability of any future meta-analysis. The key differences between the large trials of RIC in acute stroke are summarised in [table 2](#).

Chronic RIC

We identified 16 studies investigating the use of chronic RIC in patients with stroke (online supplemental material), a large proportion of which concentrate on the secondary preventative effect in symptomatic intracranial atherosclerosis.^{15 16} However, a number of trials are also assessing the biological underpinnings of the protective action of RIC including platelet reactivity (NCT03635177) and CBF (PICASSO - NCT03208166, RICFAST - NCT03794947, NCT03635177, NCT02323425, NCT03589053, NCT03968068, ChiCTR1800014403). More novel studies are investigating the impact of RIC on walking (NCT04038697), skeletal muscle blood flow (NCT03635177), poststroke fatigue (RICFAST - NCT03794947) and poststroke depression (ChiCTR-OPC-17012871).

The largest study of chronic RIC is a multicentre trial in China (NCT02534545) where 3000 participants with symptomatic intracranial stenosis and a stroke or TIA (ABCD2 score ≥ 4) in the previous 30 days are randomised to either RIC (5 \times 5 min cycles of bilateral upper limb occlusion at 200 mm Hg once daily for 12 months) or sham RIC (same protocol at 60 mmHg).³⁰ With a primary end-point of time to first recurrence of ischaemic stroke, this study may definitively answer whether chronic RIC is an effective adjunct to aggressive medical therapy in patients with symptomatic intracranial stenosis.

With several large, multicentre trials of RIC due to report their findings within the next 3 years, there will be more robust data available on the efficacy of RIC in acute and chronic stroke. However, even if the efficacy of RIC is demonstrated, several outstanding uncertainties remain which require investigation in order to optimise the delivery of RIC to the most suitable target populations. Here, we discuss which ongoing studies can address these barriers and make recommendations for future clinical trial protocols.

METHOD OF DELIVERY

Dose and frequency

The minimally effective and most effective dose and frequency of RIC is unclear. With most studies employing

between 3–5 \times 5 minute cycles of upper limb ischaemia at 200 mm Hg once daily, a single ‘dose’ of RIC can last between 30 and 50 mins. [Table 1](#) illustrates the variation in RIC protocols used in ongoing clinical trials. By identifying the dose–response relationship between RIC and any potential clinical benefits clinicians will be better able to counsel patients with shorter cycle lengths potentially resulting in improved concordance with therapy.

In addition to the RESIST trial, investigating single and repeated RIC in acute stroke, two further studies are investigating the optimal dose and frequency of chronic RIC (NCT03105141 and ChiCTR1800014403). In the first study, NCT03105141, 600 patients with symptomatic intracranial stenosis and a recent stroke or high-risk TIA are stratified into 1 of 10 treatment groups. All the treatment groups receive automated RIC daily for 1 year with substudies assessing the effect of different cuff pressures (200 mm Hg or 40 mm Hg above systolic), cycle length (4, 5 or 6 mins), cycle number (4, 5 or 6) and frequency (once daily vs twice daily) on stroke recurrence. At the same centre, ChiCTR1800014403 will randomise 273 individuals with symptomatic intracranial stenosis to either 3 \times 3 mins or 5 \times 5 mins cycles of RIC twice daily and compare the effect of a shorter RIC intervention on secondary prevention. Timing of RIC in Acute Stroke: The optimal timing of RIC delivery in acute stroke is unclear. Among the major trials of RIC in acute stroke there is significant heterogeneity in patient inclusion criteria and the timing of RIC ([table 2](#)). For instance, in RICAMIS (NCT03740971) only acute moderate-severe ischaemic stroke (National Institute of Health Stroke Scale, NIHSS 6–16) cases confirmed on neuroimaging and within 48 hours of symptom onset are included while, in the RESIST study (NCT03481777), RIC is commenced in a prehospital phase for patients with a presumed stroke (based on the combined Cincinnati Prehospital Stroke Scale and Postural Assessment Scale for Stroke) within 4 hours of symptom onset. A schematic of the timing and duration of RIC in the larger acute stroke trials is illustrated in [figure 2](#). If the beneficial effects of RIC in acute stroke require early intervention, then adequately powered studies of RIC delivered in the prehospital phase are essential to establish its efficacy.

Duration: It remains unclear whether there is a ceiling effect of repeated, daily RIC; if RIC is still efficacious when delivered on a less frequent basis, this may increase uptake and concordance. In chronic stroke, RIC has been used daily for up to 300 days.¹⁵ Meng *et al* reported on a proof-of-concept study of twice daily bilateral upper limb RIC for 300 days in patients with symptomatic intracranial stenosis. Those in the treated arm (n=38) experienced significant reductions in stroke recurrence after 90 and 300 days of RIC compared with controls treated with medical therapy alone (n=30).¹⁵ The Kaplan-Meier analysis of stroke recurrence indicates deviation of RIC group from controls after around 60 consecutive days of RIC, however, it is unclear whether a shorter duration of chronic RIC (eg, 60 days) would be sufficient to

Table 2 Summary of the major clinical trials of RPerC and early RPostC in acute stroke

Study	N	Population and timing	RIC protocol and duration	Control group	Primary outcome measure	Selected secondary outcome measures
RICAMIS (NCT03740971) China 2018–2020	1800	Acute moderate ischaemic stroke (NIHSS 6–16), confirmed on CT/MRI, and within 48 hours of symptom onset	5×5 mins (200 mm Hg) Bilateral UL Twice daily 10–14 days	Usual care	mRS at day 90	NIHSS day 12 Stroke associated pneumonia All-cause mortality day 90 Biomarkers (BDNF, VEGF, HIF-1 α , TNF- α , IL-1 β , IL-6)
RESIST (NCT03481777) Denmark 2018–24	1500	Acute ischaemic stroke and acute intracerebral haemorrhage, Prehospital Stroke Score $\geq 1^*$ and within 4 hours of symptom onset. RIC commenced at prehospital phase with further cycles if confirmed stroke.	5×5 mins (200 mm Hg) Unilateral UL Twice daily Up to 7 days	Sham RIC at 20 mm Hg	mRS at day 90	Prehospital stroke score at 24 hours. All cause mortality at 1 year Biomarkers: nitric oxide synthase phosphorylation, microRNA and extracellular vesicle profile
SERIC-AIS (NCT03669653) China 2018–22	912	Clinical diagnosis of acute ischaemic stroke (NIHSS 5–25) and within 12 hours of symptom onset.	4×5 mins (200 mm Hg) UL Twice daily Up to 7 days	Sham RIC (60 mm Hg)	mRS day 90	NIHSS day 7 Inflammatory cytokines
REMOTE-CAT (NCT03375762) Spain 2019–22	572	Suspected clinical stroke (RACE scale >0 and RACE motor item >0) and within 8 hours of symptom onset.	5×5 mins Unspecified cuff pressure Non-paretic UL	Sham RIC (unspecified pressure)	mRS day 90	NIHSS day 5 Infarct volume (DWI MRI) Metabolomic and lipidomic biomarkers
REPOST (NTR6880) Netherlands 2018–2019	200	Clinical diagnosis of ischaemic stroke and within 12 hours of symptom onset	4×5 mins (20 mm Hg >SBP) Unilateral UL Twice daily Up to 4 days	Sham RIC at 50 mm Hg	Infarct size on DWI MRI at day 4/day of discharge if earlier	mRS at 12 weeks NIHSS at discharge SSQoL and TOPICS-SF at 12 weeks and 1-year serum biomarkers
RESCUE BRAIN (NCT02189928) France 2015–2019	200	Acute ischaemic stroke (NIHSS 5–25), confirmed on MRI and within 6 hours of symptom onset	4×5 mins (110 mm Hg >SBP) Unilateral LL Single treatment	Usual Care	Infarct growth on DWI MRI at 24 hours	NIHSS day 1 mRS and Barthel Index at 12 months Recanalisation rates after thrombolysis/thrombectomy

*The Prehospital Stroke Score is a combined score of the Cincinnati Prehospital Stroke Scale and Postural Assessment Scale for Stroke mRS.

BDNF, Brain-derived Neurotrophic Factor; DWI, Diffusion Weighted Imaging; HIF-1 α , Hypoxia-inducible Factor 1-alpha; IL-6, interleukin 6; mRS, modified Rankin Scale; NIHSS, National Institute of Health Stroke Scale; RACE, Rapid Arterial Occlusion Evaluation; RIC, remote ischaemic conditioning; SBP, systolic blood pressure; SSQoL, Stroke Specific Quality of Life Scale; SSQoL, Stroke Specific Quality of Life; TNF α , tumour necrosis factor- α ; TOPICS-SF, The Older Persons and Informal Caregivers Short Form; TOPICS-SF, The Older Persons and Informal Caregivers Survey Short Form; VEGF, Vascular Endothelial Growth Factor.

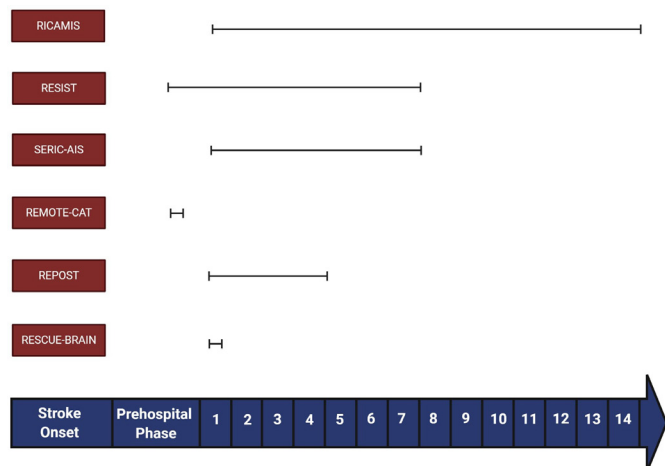


Figure 2 A schematic of RIC timing and duration in major trials of acute stroke. RIC, remote ischaemic conditioning.

sustain a clinically beneficial effect over the long term. The maximum follow-up time in current RIC studies is 12 months, which may be suboptimal given the follow-up times required to prove effectiveness in secondary prevention trials of antiplatelets and statins.^{31 32} Taken together, this could help establish an agreed protocol of either a single course of RIC, periodic RIC or lifelong RIC. Both the use of RIC for stroke prevention, potentially lifelong, and long term trial follow-up, are significant investments for patients and trialists, respectively. The discovery of validated biomarkers for vascular protection could shorten follow-up times and identify patients responding to treatment, negating the need for unnecessary long term treatment.

Unilateral versus bilateral RIC

While bilateral RIC may theoretically produce a larger ischaemic stimulus, no study is currently comparing the clinical impact of unilateral vs bilateral RIC. Unilateral RIC may be more convenient for individuals with hemiparesis and may allow concurrent completion of daily tasks during therapy. Furthermore, in the context of hyperacute stroke, the use of unilateral RIC enables the other arm to be used for venous access and intravenous thrombolysis.

For unilateral RIC, it is unclear if the marginal gain from repeated conditioning in the same limb diminishes over time. As such, it would be helpful to establish whether alternating the site of delivery has a role in maintaining the conditioning stimulus over time. Furthermore, it is unclear whether the use of unilateral RIC in the paretic arm yields the same conditioning response as RIC in the non-paretic arm; experimentally, nerve transection has been shown to block the effect of preconditioning,³³ however, this has not been established for organic central lesions.

Upper limb versus lower limb RIC

While lower limb RIC has the theoretical potential to induce a larger ischaemic stimulus, a study of RIC in

healthy volunteers showed no significant differences in the production of nitrite, a potential signalling mediator of the conditioning response, after upper limb or lower limb RIC in healthy volunteers.³⁴ However, as discussed, given the conditioning response likely involves multiple signalling cascades that occur over different time frames, there is insufficient evidence to conclude that upper limb and lower limb RIC are equipotent. We found only five studies investigating lower limb RIC (RESCUE-BRAIN (NCT02189928),²⁹ PreLIMBS (NCT02411266), RIPC-SAH (NCT02381522), NCT04039399, NCT04038697). The preponderance of interventions using upper limb RIC may reflect increased practicality for both patients and carers. A qualitative analysis of patient experience with both upper and lower limb RIC may reveal key barriers to longer-term compliance that can help investigators optimise intervention strategies.

Safety and tolerability

Multiple clinical trials suggest that RIC is safe,^{20 21} even when performed twice daily on both arms for 300 days,¹⁵ including in the elderly.¹⁶ However, relatively few studies of chronic RIC have reported on compliance, therefore, it is difficult to ascertain whether stroke patients are able to carry out RIC for sustained periods of time. In Meng *et al*,¹⁵ 51 patients with symptomatic intracranial stenosis were randomised to receive twice daily bilateral arm conditioning for 300 consecutive days but only 38 (74.5%) completed the study. Long-term data on larger cohorts will help inform clinicians on likely compliance rates.

A small number of side effects have been reported including skin petechiae,¹⁶ but no studies have indicated increased risks of venous thrombosis or rhabdomyolysis. It is unclear if chronic RIC affects sensory or motor function of the conditioned limbs; studies that include these detailed clinical and electrophysiological assessments as outcome measures should help fill this knowledge gap.

A consistent exclusion criterion for several clinical trials of RIC in stroke has been known peripheral vascular disease or venous thromboembolism affecting the conditioned limb. While there is a theoretical risk of harm in these patients, the fact that prior studies have not highlighted incident risk of these complications, and that studies are investigating upper limb RIC in patients with known lower limb peripheral arterial disease,³⁵ should provide some reassurance to clinicians.

RIC and ET

The usefulness of RIC alongside ET for large vessel occlusion (LVO) has attracted much research interest. Numerous questions arise. The first is whether RIC can be delivered parallel to ET without causing significant treatment delays. The second is whether, RIC performed alongside recanalisation of a culprit vessel may influence cerebral autoregulation in a manner that increases the risk of reperfusion injury or haemorrhagic transformation. Hypertension and impaired cerebral autoregulation

often already accompany acute ischaemic stroke.^{36 37} The third is whether the effect of general anaesthetic diminishes the effect of RIC; as previous studies have indicated, the use of propofol inhibits the ischaemic conditioning response.³⁸

Manual versus automated RIC

Automated RIC devices are widely available. While RIC has been marketed as a potentially low-cost, non-invasive intervention for vascular diseases, the costs of obtaining multiple devices, cuff and battery replacements, may prove to be prohibitively expensive in low and middle income countries where the rates of cerebrovascular disease remain high.³⁹ As such, studies which deploy manual RIC (with sphygmomanometers and digital timers) will help develop the global translatability of RIC.

Three studies plan to compare the effect of RIC in those undergoing ET (REVISE-2 - NCT03045055, PROTECT-I - NCT03915782, RICE-PAC - NCT03152799) (online supplemental material). As well as revealing efficacy, these will highlight the practical challenges of delivering RIC to patients in a time-sensitive manner.

Target populations

Intracranial stenosis: The majority of studies of chronic RIC have been performed in individuals with significant intracranial stenosis. This is an important population to study for two reasons: high stroke recurrence rates in this population mean a lower sample size is needed to detect a significant treatment effects, and they are a subgroup where significant improvements in care can potentially be made. However, while intracranial atherosclerosis contributes to ischaemic stroke in a large proportion of individuals globally, it is a less common mechanism of stroke in European and North American populations where extracranial carotid disease, cardioembolic stroke and small vessel disease are more common.^{40 41} As such, studies need to extend to individuals without intracranial stenosis to establish the utility of RIC in the wider setting of secondary stroke prevention. Furthermore, most studies of chronic RIC in ischaemic stroke have been performed in East Asia; while there is no identifiable reason why the response to RIC would be different in a different population, it is important for similar studies to be undertaken outside of Asia to identify whether the chronic RIC is both tolerated and beneficial in a wider global setting.

The influence of comorbidities and medications: It is recognised that the impact of RIC may diminish with age.⁴² However, Meng *et al.*¹⁶ demonstrated that RIC may reduce stroke recurrence in those over 80 thereby suggesting that ageing alone may not suppress the beneficial effects of RIC.

Diabetes mellitus is a common risk factor for ischaemic stroke, however, evidence from both animal models and clinical studies suggest that diabetes, particularly diabetic neuropathy, may abolish the protective effect of RIC.⁴³ For instance, a recent study of chronic, daily RIC

in patients with diabetes with peripheral arterial disease failed to show any positive impact on vascular or neuronal function³⁵; potentially linked to impairment of the neurogenic pathways thought to potentiate the action of RIC.⁴³ The theoretical risk of compounding nerve damage with repeated limb compression in chronic RIC may also be a reason for excluding such patients from trials, and their ultimate under-representation in the literature. Subgroup analyses of larger randomised controlled trials or pooled datasets may help determine if the presence of diabetes truly impacts on the clinical effects of RIC.

Animal models also suggest that the conditioning response is diminished by the presence of comorbidities such as hypercholesterolaemia, hypertension and obesity.⁴² However, this has not yet been confirmed in clinical studies of RIC in stroke. Similarly, several medications that are commonly prescribed in individuals with cardiovascular disease including nitrates, atorvastatin and nicorandil may activate similar intracellular signalling cascades to RIC.⁴⁴ However, clinical data are lacking with respect to understanding whether this would potentiate or abrogate the effects of RIC in patients taking these medications.

Cardioembolic stroke

Studies of RIC in ischaemic stroke typically exclude individuals with known cardioembolism from causes such as atrial fibrillation or flutter. In these patients, stroke often results from the sudden migration of thrombus from the heart to the cerebral arteries, a pathway that RIC may not obviously affect at first glance. However, the impact of RIC on secondary prevention of cardioembolic stroke is of interest for several reasons. First, the seminal studies investigating the protective effect of ischaemic preconditioning were performed in animal models where ischaemia was precipitated acutely,^{22 23} a mode of infarction more akin to cardio-embolism than atherosclerotic disease. It may be that slow atheromatous progression and intracranial stenosis leads to a degree of endogenous pre-conditioning that reduces the marginal impact of RIC compared with those with cardio-embolic stroke. Consistent with this, previous studies have indicated that the volume of ischaemia resulting from cardioembolism is larger than that due to a similar sized clot from the carotid/intracranial circulation.⁴⁵ Furthermore, the most common cause of cardio-embolism, atrial fibrillation, develops predominantly in later life and in the context of cardiovascular risk factors such as hypertension and diabetes mellitus. As such, many patients with atrial fibrillation have associated endothelial dysfunction,⁴⁶ another pathway potentially impacted by RIC.⁴⁷

Small vessel ischaemic disease

Small vessel ischaemic disease (SVID) is a common comorbidity and complication associated with stroke and is a precursor for the development of vascular cognitive impairment (VCI) and vascular dementia. The role of RIC in SVID has attracted interest due its potential effects on

CBF and inflammatory markers. In SVID, hypoperfusion due to microangiopathy can precipitate neurodegeneration through disruption of the blood–brain barrier and neuroinflammation.⁴⁸ Declines in cognitive function have also been associated with reduced microvascular perfusion.⁴⁹ Small pilot studies of patients with established SVID or those with VCI have shown that RIC applied twice daily (5×5 min cycles) for between 6 and 12 months can result in improvements in CBF velocities, reductions volume of white matter lesions, and variable improvements in domains of cognitive function.^{50–52} Investigations are currently under way to evaluate whether once daily application, for a shorter duration of 1 month has similar effects with greater treatment adherence.⁵³

RIC and exercise

Experimental and clinical evidence suggests shared biological mechanisms for the effects of RIC and exercise, including increased heat shock proteins and increased endothelial nitric oxide signalling.⁵⁴ It is unclear whether there is any synergistic effect of RIC when performed in addition to regular exercise, and no current studies evaluating this in chronic stroke. While exercise confers many physiological benefits in stroke patients,⁵⁵ numerous barriers to exercise poststroke exist including depression, fatigue and physical disability. As such, if there are physiological effects of RIC that mirror exercise, then this may be a useful long-term ancillary treatment when patients are physically unable to exercise.

Underlying mechanism and biomarkers

Applying an external pressure to occlude blood flow to a limb initiates transmission of a signal that mediates the RIC response. Humoral, neurogenic and immune mediated pathways have been proposed as transmission and end organ effector mechanisms.⁹ After the transmission of the conditioning stimulus, an array of possible biochemical and physiological changes may contribute to clinically meaningful outcomes in stroke patients including increased CBF,¹⁵ angiogenesis and increased collateral circulation,²⁷ antiplatelet effects,^{56 57} synaptogenesis,⁵⁸ immune regulation, mitochondrial function and autophagy regulation,⁴⁷ (figure 3). The latency of these biological mediators and effectors may vary and are likely to underpin differences in effects of acute and chronic RIC.⁹ Establishing the underlying mechanisms and final effectors of RIC will prove essential in optimising intervention development, trial design and establishing its efficacy and safety in wider clinical practice. Furthermore, by characterising the intracellular pathways associated with the beneficial effects of RIC, appropriate drug targets may be identified, leading the way towards pharmacological conditioning.⁵⁹

For subarachnoid haemorrhage, the putative biological mechanism for any potential benefit of RIC are not well characterised but may involve reducing vasospasm.⁶⁰ In intracerebral haemorrhage, there are pathophysiological consequences that are shared with ischaemic stroke

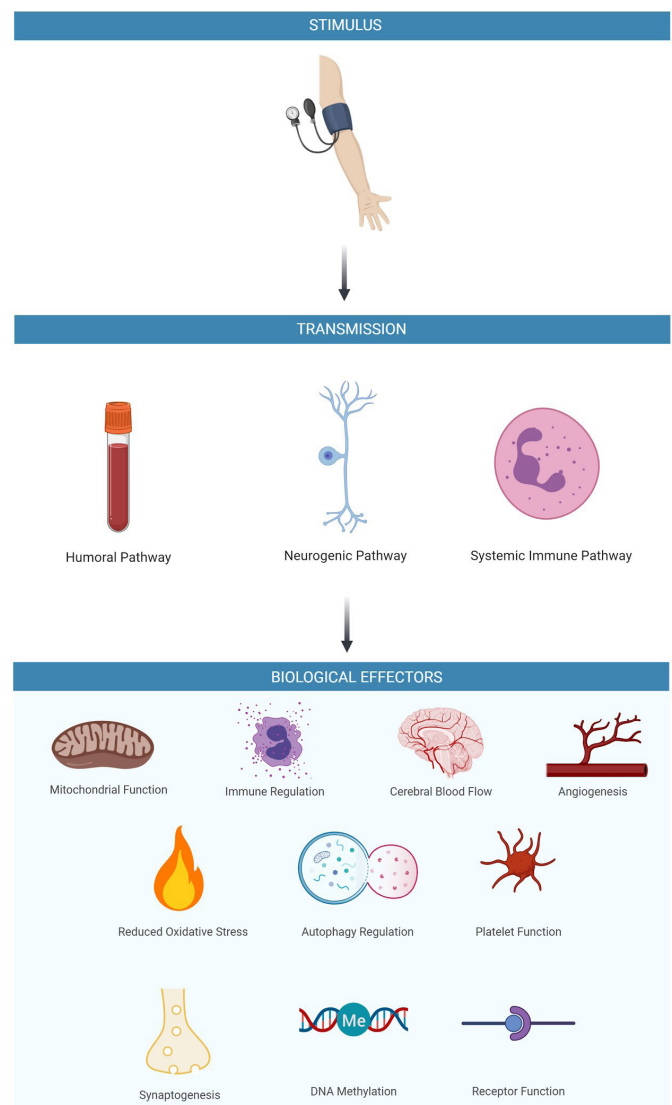


Figure 3 Proposed mechanism of action of remote ischaemic conditioning in stroke.

including endothelial dysfunction, impaired cerebral autoregulation, a proinflammatory milieu and mitochondrial dysfunction⁶¹; these have all been proposed as therapeutic targets of RIC in ischaemic stroke, and therefore, may prove to be of significance in intracerebral haemorrhage.

Circulating biomarkers

Previous studies have indicated potential serum signalling mediators of RIC including heat shock proteins, tumor necrosis factor (TNF)- α and interleukin 6 (IL-6).⁹ However, no established circulating biomarkers have been shown to be reliably correlate with the degree of conditioning response or clinical outcomes. Identifying a serum biomarker would be advantageous as it could offer a minimally invasive measure to: (1) establish which patients are responding to the treatment and (2) optimise the dose, frequency and duration of RIC treatment on an individualised basis. Several ongoing studies are investigating candidate circulating biomarkers including

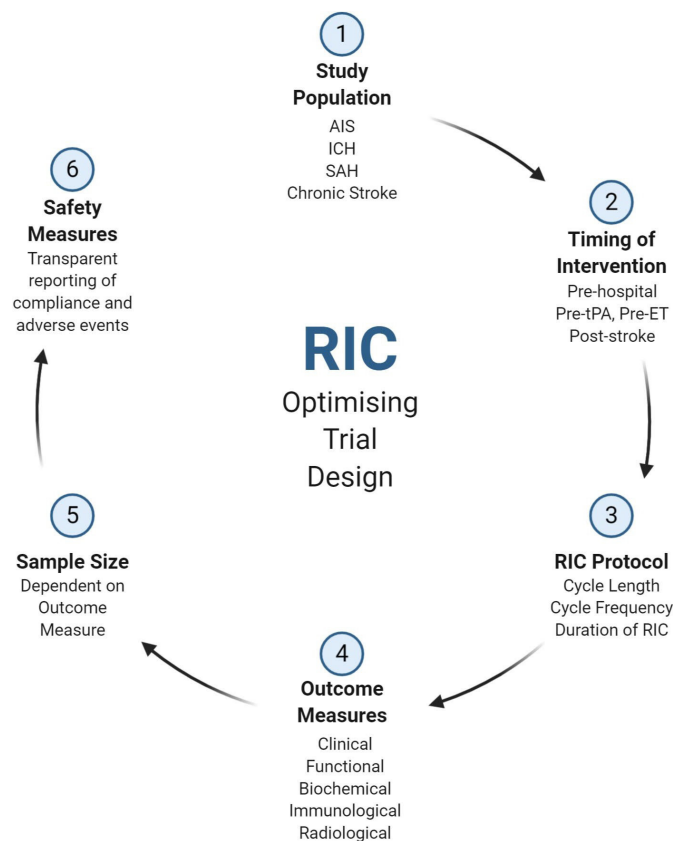


Figure 4 Optimising remote ischaemic conditioning (RIC) trial design. AIS, Acute Ischaemic Stroke; ET, endovascular therapy; ICH, Intracerebral haemorrhage; SAH, Subarachnoid Haemorrhage; tPA, Tissue Plasminogen Sctivator.

NCT02323425 (VEGF and bFGF), RESIST - NCT03481777 (eryNOS3 phosphorylation, microRNA and extracellular vesicle profile), NCT03546309 (S100-A4, MMP-9, bFGF, PDGF, VEGF) and NCT03335111 (IL-4, IL-6, TNF) (online supplemental material). Future studies of RIC in stroke should include focused analyses of candidate biomarkers, identified from experimental animal and human models, at different time points before, during and after both acute and chronic RIC. It is also important to validate which biomarkers are associated with the transmission of the ischaemic signal and which are associated with the biological effector response and clinical outcomes.

Radiological correlates

Animal models,²⁷ and previous clinical studies,¹⁵ indicate that RIC can increase CBF as well as increasing the dynamic range of cerebral autoregulation in healthy volunteers.³⁷ In the setting of acute ischaemic stroke, RPerC may increase CBF (directly or via collaterals) to salvage the ischaemic penumbra.²⁷ Several studies are investigating the effect of RPerC on infarct volume and clinical outcomes acutely (online supplemental material), however, few trials use non-invasive measures such as Transcranial Doppler (TCD) to characterise the impact of RIC on blood vessel diameter and flow.

Several studies investigating chronic RIC are measuring cerebral and skeletal muscle blood flow using a range of modalities including TCD, Arterial Spin Labelling and MR angiography (NCT03635177, NCT02323425 and NCT04038697). If increased cerebral or skeletal muscle blood flow is associated with positive clinical outcomes in the larger studies of chronic RIC then non-invasive assessments of blood flow could be used to establish response to RIC on a personalised level.

Economic analysis

The costs of automated conditioning devices, device maintenance and safety monitoring need to be factored into a cost–benefit analysis of RIC in stroke. Furthermore, additional care staff may be required to administer RIC to individuals who are unable to independently apply the device.

Recommendations for future trial design

Given the multitude of ongoing studies for RIC in stroke, a collaborative effort is required to synthesise the array of results into meaningful outcomes for stroke patients. Figure 4 represents a proposed schema for future clinical trial design, identifying six key areas which future studies should focus their attention in order to address the remaining uncertainties of RIC in stroke.

CONCLUSIONS

RIC has been shown to be a promising therapy in animal models of stroke while smaller clinical studies have indicated its safety and feasibility in humans. However, there are several remaining questions before results of these studies can be translated into widespread clinical practice. Ongoing clinical trials will inform whether RIC is effective in the acute and chronic setting of stroke. However, there is an urgent need to concurrently investigate which patient groups respond best to RIC, identify the optimal dose and duration of therapy, and to establish biological and radiological biomarkers of the conditioning response before RIC can advance into routine clinical practice.

Twitter Ali Ali @dralinali

Contributors AA conceived the review topic and supervised all aspects of data collection, analysis and report writing. BM and SB undertook data collection and analysis. All authors contributed to data analysis and manuscript writing.

Funding This study was funded by NIHR Sheffield Biomedical Research Centre (BRC).

Competing interests None declared.

Patient consent for publication Not required.

Provenance and peer review Not commissioned; externally peer reviewed.

Open access This is an open access article distributed in accordance with the Creative Commons Attribution Non Commercial (CC BY-NC 4.0) license, which permits others to distribute, remix, adapt, build upon this work non-commercially, and license their derivative works on different terms, provided the original work is properly cited, appropriate credit is given, any changes made indicated, and the use is non-commercial. See: <http://creativecommons.org/licenses/by-nc/4.0/>.

ORCID iD

Ali Ali <http://orcid.org/0000-0001-6339-4076>

REFERENCES

- 1 Heusch G, Botker HE, Przyklenk K, *et al.* Remote ischemic conditioning. *J Am Coll Cardiol* 2015;65:177–95.
- 2 Murry CE, Jennings RB, Reimer KA. Preconditioning with ischemia: a delay of lethal cell injury in ischemic myocardium. *Circulation* 1986;74:1124–36.
- 3 Przyklenk K, Bauer B, Ovize M, *et al.* Regional ischemic 'preconditioning' protects remote virgin myocardium from subsequent sustained coronary occlusion. *Circulation* 1993;87:893–9.
- 4 Gho BC, Schoemaker RG, van den Doel MA, *et al.* Myocardial protection by brief ischemia in noncardiac tissue. *Circulation* 1996;94:2193–200.
- 5 Jensen HA, Loukogeorgakis S, Yannopoulos F, *et al.* Remote ischemic preconditioning protects the brain against injury after hypothermic circulatory arrest. *Circulation* 2011;123:714–21.
- 6 Tapuria N, Kumar Y, Habib MM, *et al.* Remote ischemic preconditioning: a novel protective method from ischemia reperfusion injury--a review. *J Surg Res* 2008;150:304–30.
- 7 Wever KE, Warlé MC, Wagener FA, *et al.* Remote ischaemic preconditioning by brief hind limb ischaemia protects against renal ischaemia-reperfusion injury: the role of adenosine. *Nephrol Dial Transplant* 2011;26:3108–17.
- 8 Candilio L, Malik A, Hausenloy DJ. Protection of organs other than the heart by remote ischemic conditioning. *J Cardiovasc Med* 2013;14:193–205.
- 9 Zhou G, Li MH, Tudor G, *et al.* Remote ischemic conditioning in cerebral diseases and neurointerventional procedures: recent research progress. *Front Neurol* 2018;9:339.
- 10 Doeppner TR, Zechmeister B, Kaltwasser B, *et al.* Very delayed remote ischemic post-conditioning induces sustained neurological recovery by mechanisms involving enhanced angiogenesis and peripheral immunosuppression reversal. *Front Cell Neurosci* 2018;12:383.
- 11 Khan MB, Hafez S, Hoda MN, *et al.* Chronic remote ischemic conditioning is cerebroprotective and induces vascular remodeling in a VCI model. *Transl Stroke Res* 2018;9:51–63.
- 12 Durand MJ, Boerger TF, Nguyen JN, *et al.* Two weeks of ischemic conditioning improves walking speed and reduces neuromuscular fatigability in chronic stroke survivors. *J Appl Physiol* 2019;126:755–63.
- 13 England TJ, Hedstrom A, O'Sullivan S, *et al.* RECAST (remote ischemic conditioning after stroke trial): a pilot randomized placebo controlled phase II trial in acute ischemic stroke. *Stroke* 2017;48:1412–+.
- 14 Hougaard KD, Hjort N, Zeidler D, *et al.* Remote ischemic preconditioning as an adjunct therapy to thrombolysis in patients with acute ischemic stroke: a randomized trial. *Stroke* 2014;45:159–67.
- 15 Meng R, Asmaro K, Meng L, *et al.* Upper limb ischemic preconditioning prevents recurrent stroke in intracranial arterial stenosis. *Neurology* 2012;79:1853–61.
- 16 Meng R, Ding Y, Asmaro K, *et al.* Ischemic conditioning is safe and effective for octo- and nonagenarians in stroke prevention and treatment. *Neurotherapeutics* 2015;12:667–77.
- 17 Zhao W, Che R, Li S, *et al.* Remote ischemic conditioning for acute stroke patients treated with thrombectomy. *Ann Clin Transl Neurol* 2018;5:850–6.
- 18 Zhao W, Meng R, Ma C, *et al.* Safety and efficacy of remote ischemic preconditioning in patients with severe carotid artery stenosis before carotid artery stenting: a proof-of-concept, randomized controlled trial. *Circulation* 2017;135:1325–+.
- 19 England TJ, Hedstrom A, O'Sullivan SE, *et al.* Remote ischemic conditioning after stroke trial 2: a phase IIb randomized controlled trial in hyperacute stroke. *J Am Heart Assoc* 2019;8:e013572.
- 20 Landman TRJ, Schoon Y, Warle MC. Remote ischemic conditioning as an additional treatment for acute ischemic stroke the preclinical and clinical evidence. *Stroke* 2019;50:1934–9.
- 21 Zhao W, Li S, Ren C, *et al.* Remote ischemic conditioning for stroke: clinical data, challenges, and future directions. *Ann Clin Transl Neurol* 2019;6:186–96.
- 22 Murry CE, Jennings RB, Reimer KA. Preconditioning with ischemia: a delay of lethal cell injury in ischemic myocardium. *Circulation* 1986;74:1124–36.
- 23 Przyklenk K, Bauer B, Ovize M, *et al.* Regional ischemic 'preconditioning' protects remote virgin myocardium from subsequent sustained coronary occlusion. *Circulation* 1993;87:893–9.
- 24 Brinjikji W, Murad MH, Lanzino G, *et al.* Endovascular treatment of intracranial aneurysms with flow diverters: a meta-analysis. *Stroke* 2013;44:442–7.
- 25 Muller MD, von Felten S, Algra A, *et al.* Immediate and delayed procedural stroke or death in stenting versus endarterectomy for symptomatic carotid stenosis. *J Vasc Surg* 2019;69:968–9.
- 26 Tülü S, Mulino M, Pinggera D, *et al.* Remote ischemic preconditioning in the prevention of ischemic brain damage during intracranial aneurysm treatment (RIPAT): study protocol for a randomized controlled trial. *Trials* 2015;16:594.
- 27 Kitagawa K, Saitoh M, Ishizuka K, *et al.* Remote limb ischemic conditioning during cerebral ischemia reduces infarct size through enhanced collateral circulation in murine focal cerebral ischemia. *J Stroke Cerebrovasc Dis* 2018;27:831–8.
- 28 He Y-D, Guo Z-N, Qin C, *et al.* Remote ischemic conditioning combined with intravenous thrombolysis for acute ischemic stroke. *Ann Clin Transl Neurol* 2020;7:972–9.
- 29 Pico F, Rosso C, Meseguer E, *et al.* A multicenter, randomized trial on neuroprotection with remote iSchemic per-conditioning during acute iSchemic stroke: the remote iSchemic conditioning in acute brain infarction study protocol. *Int J Stroke* 2016;11:938–43.
- 30 Hou C, Duan J, Luo Y, *et al.* Remote limb ischemic conditioning treatment for intracranial atherosclerotic stenosis patients. *Int J Stroke* 2016;11:831–8.
- 31 Sacco RL, Diener H-C, Yusuf S, *et al.* Aspirin and extended-release dipyridamole versus clopidogrel for recurrent stroke. *N Engl J Med* 2008;359:1238–51.
- 32 , Halkes PHA, van Gijn J, *et al.* ESPRIT Study Group. Aspirin plus dipyridamole versus aspirin alone after cerebral ischaemia of arterial origin (ESPRIT): randomised controlled trial. *Lancet* 2006;367:1665–73.
- 33 Steensrud T, Li J, Dai X, *et al.* Pretreatment with the nitric oxide donor SNAP or nerve transection blocks humoral preconditioning by remote limb ischemia or intra-arterial adenosine. *Am J Physiol Heart Circ Physiol* 2010;299:H1598–603.
- 34 Dezfulian C, Taft M, Corey C, *et al.* Biochemical signaling by remote ischemic conditioning of the arm versus thigh: is one raise of the cuff enough? *Redox Biol* 2017;12:491–8.
- 35 Hansen CS, Jørgensen ME, Fleischer J, *et al.* Efficacy of long-term remote ischemic conditioning on vascular and neuronal function in type 2 diabetes patients with peripheral arterial disease. *J Am Heart Assoc* 2019;8:e011779.
- 36 Chi N-F, Hu H-H, Wang C-Y, *et al.* Dynamic cerebral autoregulation is an independent functional outcome predictor of mild acute ischemic stroke. *Stroke* 2018;49:2605–11.
- 37 Guo Z-N, Guo W-T, Liu J, *et al.* Changes in cerebral autoregulation and blood biomarkers after remote ischemic preconditioning. *Neurology* 2019;93:e8–19.
- 38 Kottenberg E, Thielmann M, Bergmann L, *et al.* Protection by remote ischemic preconditioning during coronary artery bypass graft surgery with isoflurane but not propofol - a clinical trial. *Acta Anaesthesiol Scand* 2012;56:30–8.
- 39 Feigin VL, Forouzanfar MH, Krishnamurthi R, *et al.* Global and regional burden of stroke during 1990–2010: findings from the global burden of disease study 2010. *Lancet* 2014;383:245–55.
- 40 Kolominsky-Rabas PL, Weber M, Gefeller O, *et al.* Epidemiology of ischemic stroke subtypes according to TOAST criteria: incidence, recurrence, and long-term survival in ischemic stroke subtypes: a population-based study. *Stroke* 2001;32:2735–40.
- 41 White H, Boden-Albala B, Wang C, *et al.* Ischemic stroke subtype incidence among whites, blacks, and Hispanics: the Northern Manhattan study. *Circulation* 2005;111:1327–31.
- 42 McCafferty K, Forbes S, Thiemermann C, *et al.* The challenge of translating ischemic conditioning from animal models to humans: the role of comorbidities. *Dis Model Mech* 2014;7:1321–33.
- 43 Tyagi S, Singh N, Virdi JK, *et al.* Diabetes abolish cardioprotective effects of remote ischemic conditioning: evidences and possible mechanisms. *J Physiol Biochem* 2019;75:19–28.
- 44 Sivaraman V, Yellon DM. Pharmacologic therapy that simulates conditioning for cardiac ischemic/reperfusion injury. *J Cardiovasc Pharmacol Ther* 2014;19:83–96.
- 45 Weih M, Kallenberg K, Bergk A, *et al.* Attenuated stroke severity after prodromal TIA: a role for ischemic tolerance in the brain? *Stroke* 1999;30:1851–4.
- 46 Guazzi M, Arena R. Endothelial dysfunction and pathophysiological correlates in atrial fibrillation. *Heart* 2009;95:102–6.
- 47 You J, Feng L, Bao L, *et al.* Potential applications of remote limb ischemic conditioning for chronic cerebral circulation insufficiency. *Front Neurol* 2019;10:467.
- 48 Malojcic B, Giannakopoulos P, Sorond FA, *et al.* Ultrasound and dynamic functional imaging in vascular cognitive impairment and Alzheimer's disease. *BMC Med* 2017;15:27.



- 49 Zhang CE, Wong SM, Uiterwijk R, *et al.* Intravoxel incoherent motion imaging in small vessel disease: microstructural integrity and microvascular perfusion related to cognition. *Stroke* 2017;48:658–63.
- 50 Mi T, Yu F, Ji X, *et al.* The interventional effect of remote ischemic preconditioning on cerebral small vessel disease: a pilot randomized clinical trial. *Eur Neurol* 2016;76:28–34.
- 51 Wang Y, Meng R, Song H, *et al.* Remote ischemic conditioning may improve outcomes of patients with cerebral small-vessel disease. *Stroke* 2017;48:3064–72.
- 52 Liao Z, Bu Y, Li M, *et al.* Remote ischemic conditioning improves cognition in patients with subcortical ischemic vascular dementia. *BMC Neurol* 2019;19:206.
- 53 Ganesh A, Barber P, Black SE, *et al.* Trial of remote ischaemic preconditioning in vascular cognitive impairment (TRIC-VCI): protocol. *BMJ Open* 2020;10:e040466.
- 54 Zhao W, Li S, Ren C, *et al.* Chronic Remote Ischemic Conditioning May Mimic Regular Exercise: Perspective from Clinical Studies. *Aging Dis* 2018;9:165–71.
- 55 Wang C, Redgrave J, Shafizadeh M, *et al.* Aerobic exercise interventions reduce blood pressure in patients after stroke or transient ischaemic attack: a systematic review and meta-analysis. *Br J Sports Med* 2019;53:1515–25.
- 56 Alpuche J, Quirino L, Sánchez-Vega JT, *et al.* The role of platelets in ischemic conditioning. *Cond Med* 2018;1:313–8.
- 57 Linden MD, Whittaker P, Frelinger AL, *et al.* Preconditioning ischemia attenuates molecular indices of platelet activation-aggregation. *J Thromb Haemost* 2006;4:2670–7.
- 58 Wang Y, Zhang Z, Zhang L, *et al.* RLIPostC protects against cerebral ischemia through improved synaptogenesis in rats. *Brain Inj* 2018;32:1429–36.
- 59 Esposito E, Desai R, Ji X. Pharmacologic pre- and postconditioning for stroke: basic mechanisms and translational opportunity. *Brain Circulation* 2015;1:104–13.
- 60 Koch S, Katsnelson M, Dong C, *et al.* Remote ischemic limb preconditioning after subarachnoid hemorrhage: a phase Ib study of safety and feasibility. *Stroke* 2011;42:1387–91.
- 61 Aronowski J, Zhao X. Molecular pathophysiology of cerebral hemorrhage. *Stroke* 2011;42:1781–6.

Supplementary material 1. Ongoing Studies of Remote Ischaemic Conditioning (RIC) in Stroke

Study	Status	Population	N	RIC Protocol	Control Group(s)	Primary Outcome	Selected Secondary Outcome Measures
REMOTE ISCHAEMIC PRE-CONDITIONING							
NEAT (NCT03496415) China 2018-19	Recruiting	Unruptured CA pre-ET	210	Unspecified cycle length (200mmHg)	Sham RIC (60mmHg)	New DWI lesions day 3	Ischaemic lesion burden NIHSS day 7 mRS day 30
NCT03814850 USA 2019-22	Not yet recruiting	Unruptured CA pre-ET	50	4 x 5 mins (30mmHg > SBP) Unilateral UL	Sham RIC (30mmHg)	Adverse events	Cognitive impairment day 2-4 and 9 months Ischaemic lesion volume day 2-4
RIPAT (NCT02162654) ²⁶ Austria 2013-16	Unknown	Unruptured CA pre- ET/surgery	48	3 x 5 mins (200mmHg) Unilateral UL	Sham RIC (10mmHg)	Biomarkers (S100B, NSE, GFAP, MMP9, Microparticles)	New ischaemic lesions day 1- 2 NIHSS and mRS at 12 months
REMOTE ISCHAEMIC PER-CONDITIONING AND/OR EARLY REMOTE ISCHAEMIC POST-CONDITIONING							
RESCUE- BRAIN (NCT02189928) ²⁸ France 2015-19	Completed	AIS	200	4 x 5 mins (110mmHg > SBP) Unilateral LL	Usual medical therapy	DWI MRI infarct volume at 24 hrs	mRS day 90

RICAMIS (NCT03740971) ⁶² China 2018-20	Recruiting	AIS (NIHSS 6-16)	180 0	5 x 5 mins (200mmHg) Bilateral UL Twice daily 10-14 days	Usual care	mRS day 90	NIHSS day 12 Stroke associated pneumonia All cause mortality day 90 Biomarkers (BDNF, VEGF, HIF-1 α , TNF- α , IL-1 β , IL-6)
RESIST (NCT03481777) Denmark 2018-24	Recruiting	AIS and ICH	150 0	5 x 5 mins (200mmHg) Unilateral UL Twice daily up to 7 days	Sham RIC (20mmHg)	mRS day 90	Recurrent ischaemic stroke at 12 months Flow cytometry MicroRNA
PROTECT-I (NCT03915782) France 2019-21	Not yet recruiting	AIS + MT	126	4 x 5 mins (200mmHg) UL	Sham RIC (30mmHg)	Infarct volume day 1 (FLAIR)	NIHSS day 7 mRS day 90
SERIC-sICH (NCT03484936) China 2018-21	Not yet recruiting	Acute sICH	530	4 x 5 mins (200mmHg) UL Twice daily 7 days	Sham RIC	mRS day 90	Adverse events CT haematoma expansion 24 hrs
REVISE-2 (NCT03045055) China 2018-19	Not yet recruiting	AIS + MT	180	4 x 5 mins (200mmHg) Unilateral UL	Sham RIC (60mmHg)	Final CT infarct volume	Trial feasibility mRS day 9 Change in NIHSS
REPOST (NTR6880) ⁶³ Netherlands 2018-21	Recruiting	AIS	200	4 x 5 mins (20mmHg > SBP) Unilateral UL Twice daily up to 4 days	Sham RIC (50mmHg)	MRI DWI infarct volume day 4 (or day of discharge)	NIHSS at discharge mRS day 90 Recurrent vascular events at 12 months
RICH	Recruiting	Acute sICH	40	4 x 5 mins	Usual Care	Adverse events	

(NCT03930940) China 2019-22				(200mmHg) UL			
REMOTE-CAT (NCT03375762) Spain 2019-22	Recruiting	Suspected AIS	572	5 x 5 mins Unspecified cuff pressure Non-paretic UL	Sham RIC (unspecified pressure)	mRS day 90	Early NIHSS change Infarct volume (DWI MRI) Metabolomic and lipidomic biomarkers
SERIC-AIS (NCT03669653) China 2018-22	Recruiting	AIS	912	4 x 5 mins (200mmHg) UL Twice daily Up to 7 days	Sham RIC (60mmHg)	mRS day 90	NIHSS day 7 Inflammatory cytokines
SERICT-AIS (NCT04027621) China 2019-20	Completed	AIS + tPA	50	4 x 5 mins (200mmHg) UL Twice between 6- 24hrs post tPA	Sham RIC (60mmHg)	Adverse events	NIHSS day 7 or discharge mRS day 90
rTPA-RIC (NCT02886390) China 2018-19	Recruiting	AIS + tPA	60	5 x 5 mins (200mmHg) Bilateral UL	tPA alone	MRI DWI infarct volume at 72 hours	NIHSS day 5-7 mRS day 90 Recurrent events day 90 MMP-9, IL-6, HS-CRP at baseline and Day 7
rTPA-RIC1 (NCT03231384) China 2017-18	Completed	AIS + tPA	31	5 x 5 mins (200mmHg) Bilateral UL	tPA alone	Feasibility	Signs of tissue or neurovascular injury Infarct volume (MRI) day 7 NIHSS day 7 mRS day 90
RIC-ACS (NCT03868007)	Not yet recruiting	Age \geq 60 AIS + ACS	80	5 x 5 mins (200mmHg)	Sham RIC (60mmHg)	All cause mortality at 3 months	NIHSS day 90 GRACE score day 90

China 2019				Bilateral UL 14 days			
RIC-SIID (NCT04069546) China 2019-20	Recruiting	AIS	30	5 x 5 mins (180mmHg) Unilateral UL	Usual care	Flow cytometry (immune profile)	Serum cytokines at baseline, day 2 and day 7 (TLR-2, IL- 6) Stroke associated pneumonia
TRIPCAIS (NCT03218293) China 2017-20	Recruiting	AIS + tPA	120	5 x 5 mins (3 min deflations) (Unspecified cuff pressure) Bilateral UL	Usual care	VEGF, bFGF up to 12 months	NIHSS day 14 ADLs day 90
ICARUS (NCT03481205) USA 2018-21	Not yet recruiting	AIS & LVO (helicopter transit)	10	3-5 x 5 mins (200mmHg) Bilateral UL	Usual care	Feasibility	Adverse events
NCT03335111 China 2016-19	Recruiting	AIS	100	5 x 5 mins (50mmHg > SBP) Bilateral UL for 7 days	Sham RIC (60mmHg)	Serum cytokines and peripheral immune cells at baseline, day 1 & day 7.	NIHSS day 7 Recurrent stroke at 12 months
ChiCTR- 1800018290 China 2019-20	Recruiting	AIS & SAH & 'Brain- Heart Syndrome'	60	Not specified	Usual care	Cardiac function (ECG, Echo, serum markers)	mRS at discharge, 30 days and 6 months
DIPIS (ChiCTR- IOR-17012011) China 2017-18	Completed	AIS	44	Not specified	Sham RIC (unspecified pressure)	Stroke progression day 90	mRS, NIHSS, vascular events and mortality day 90
ChiCTR-IOR- 15006549 ⁶⁴	Recruiting	AIS	400	4 x 5 mins (200mmHg)	Sham RIC (30mmHg)	Feasibility	Infarct volume mRS

China 2015-18				Non-paretic UL for 14 days			NIHSS Mortality
NCT03968068 UK 2019-20	Recruiting	AIS	48	4 x 5 mins (200mmHg) Unilateral UL	30 mins AE 30 mins AE in healthy controls RIC 4 x 5 mins in healthy controls	Adverse events Discomfort (Likert Scale) % interventions completed	CBFv (TCD)
ERVAS ⁶⁵ India 2018-present	Recruiting	Aneurysma 1 SAH	24	3 x 5 mins (30mmHg > SBP) UL Every 48 hours up to day 7-10	Sham RIC (30mmHg)	Vasospasm (TCD, angiography) Serum Biomarkers (S100B, NSE)	GOSE at 1, 3 and 6 months
PreLIMBS (NCT02411266) USA 2018-22	Recruiting	Aneurysma 1 SAH	60	3 x 10 mins (5 min deflation) (200mmHg) Unilateral LL every 1-2 days for 14 days	Sham RIC (30mmHg)	Adverse events	mRS day 90
NEAT2 (NCT03561311) China 2018-19	Recruiting	Ruptured CA + ET	210	Unspecified cycles (200mmHg) Bilateral UL	Sham RIC (60mmHg)	Ischaemic lesions (MRI DWI) at 72 hours	NIHSS day 7 Cerebrovascular events day 30

RIPC-SAH (NCT02381522) USA 2015-19	Active, not recruiting	Aneurysma 1 SAH	26	4 cycles (unspecified length) (20mmHg > SBP) Unilateral LL	Sham RIC (20mmHg < SBP)	Vasospasm (TCD)	mRS Mortality Additional neurological events
RICE-PAC (NCT03152799) UK 2017-19	Unknown	AIS (anterior circulation) + MT	60	Unspecified protocol Non-paretic UL	Sham RIC	Penumbral salvage (MRI) at 3 months	Cerebral oedema and infarct size day 7 mRS, NIHSS and QoL at 3 months
ChiCTR-INR- 17012308 China 2017-20	Not yet recruiting	AIS	200	3 x 5 mins (20mmHg > SBP) Unilateral UL	Sham RIC (0mmHg)	Coagulant Function (TEG-MA)	mRS at 12 months Recurrent ischaemic stroke
CHRONIC REMOTE ISCHAEMIC POST-CONDITIONING							
PICNIC-One (NCT03004820) ⁶⁶ China 2016-17	Completed	NDS or high-risk TIA	167	5 x 5 min (200mmHg) Bilateral UL Twice daily 90 days	No comparator	Recurrent stroke/TIA day 90	Compliance Adverse events Handgrip strength in affected arm at day 90 NIHSS, mRS and BI day 90
NCT03635177 Denmark 2019-21	Recruiting	Lacunar stroke	20	Crossover: 4 x 5 mins (200mmHg) Unilateral UL Once daily 4 weeks	Crossover: Sham RIC	FMD (brachial artery)	Femoral artery blood flow before and after exercise CBFv during visual task Platelet reactivity
EPIC-sICAS (NCT02323425) China 2015-18	Unknown	sIntraCAS	100	5 x 3 mins (5 mins deflation) (180mmHg) Bilateral UL	Usual care	Collateral circulation at 6 months (MRA, DCE- MRI, TCD, SPECT)	NIHSS at 1 year VEGF and bFGF day 10

				Twice daily 180 days			
NCT04039399 USA 2019-20	Recruiting	Chronic unilateral stroke with residual lower limb paresis	15	Crossover: 5 x 5 mins (225mmHg) Unilateral LL (Paretic Leg)	Crossover: Sham RIC (10mmHg)	Cold Pressor Test and plasma epinephrine & norepinephrine	SBP after RIC and cold pressor test
NCT04038697 USA 2018-24	Recruiting	Chronic unilateral cortical stroke with residual lower limb paresis	120	5 x 5 mins (225mmHg) Unilateral LL (Paretic Leg) 12 sessions over 4 weeks + Treadmill Training	Sham RIC (10mmHg) + Treadmill Training RIC alone RIC + Treadmill Training (healthy controls)	Self-selected walking speed at 4 weeks (10MWT)	Knee extensor strength FMD of non-paretic brachial artery Heart rate variability
NCT02534545 ²⁹ China 2015-19	Recruiting	Ischaemic stroke or high-risk TIA	300 0	5 x 5 mins (200mmHg) Bilateral UL Once daily 12 months	Sham RIC (60mmHg)	Time to recurrent stroke	All cause mortality NIHSS, mRS and BI at 12 months
RICFAST (NCT03794947) UK 2019-21	Recruiting	Stroke at least 6 weeks prior with disabling fatigue	34	4 x 5 mins (200mmHg) Unilateral UL 18 sessions over 6 weeks	Sham RIC (20 mmHg)	Feasibility Adverse events	FSS 6 weeks Cerebral Perfusion (MRI Perfusion)
ChiCTR-	Recruiting	sIntraCAS	273	5 x 5 min	3 x 3 min	Recurrent stroke/TIA at	NIHSS, mRS and BI at 12

1800014403 China 2018-20				(200mmHg) Bilateral UL Twice daily 12 months	(200mmHg) Bilateral UL Twice daily 12 months Usual Treatment	12 months	months
NCT035890 China 2018-19	Recruiting	sIntraCAS	30	5 x 5 mins (200mmHg) Bilateral UL Twice daily 90 days	Sham RIC	CBF and brain metabolism under stress	Stroke recurrence
PICASSO (NCT03208166) USA 2017-19	Completed	sIntraCAS	2	4 x 5 mins (200mmHg) Bilateral UL Daily 30 days	Usual care	CBF (MRI ASL) day 30 Feasibility	Biomarkers at day 30 (including Nitrite, IL-10, hs- CRP and MMP-9)
REM- PROTECT (NCT02169739) USA 2015-19	Recruiting	≥40 yrs Lacunar stroke	60	4 x 5 mins (Unspecified cuff pressure) Once or twice daily One year	Usual care	Adherence Patient-reported discomfort	
NCT03105141 China 2017-20	Recruiting	sIntraCAS	600	Bilateral UL. 10 treatment groups with varied number of cycles, cycle lengths, frequency and cuff pressure	Several active comparators	Recurrent stroke at 12 months	Adverse events Cerebral perfusion (multi-modal) Cognition (MMSE, MOCA, TICS-M)
ChiCTR190002	Not yet	sIntraCAS	140	Not specified	Sham RIC	NIHSS, mRS & BI day	Vascular events day 180

1006 China 2019	recruiting				(unspecified pressure)	180	CBF at day 180
RIC-CCCA (NCT03721692) China 2018-24	Enrolling by Invitation	sIntraCAS & sCAS	392	5 x 5 mins (Unspecified cuff pressure) UL Once daily 3 months	Usual care	Combined vascular events at 1 year	Time to vascular event All cause mortality at 1 year mRS day 90
NCT02971462 China 2016-17	Unknown	sIntraCAS	80	5 x 5 mins (200mmHg) Bilateral UL Twice daily Unspecified duration	Usual care	Posterior circulation stroke at 6 months	Combined cerebrovascular events at 6 months mRS at 6 months CBF (TCD) at 6 months
ChiCTR-OPC-17012871 China 2016-18	Unknown	Ischaemic stroke	50	Daily RIC (not further specified)	None	Depression incidence	HDS
UNDETERMINED							
ChiCTR-1900026034 China 2018-21	Recruiting	AIS	104	Not specified	Usual care	Neuropsychological evaluation P300 event-related potential	ICAM-1 Endothelin-1

Key:

10MWT – 10 meter walk test
 ACS – Acute Coronary Syndrome
 ADL – Activities of daily living
 AE – Aerobic exercise
 AIS – Acute Ischaemic Stroke

AIS + MT – Acute Ischaemic Stroke plus Mechanical Thrombectomy
ASL – Arterial spin-labeled
BDNF – Brain-derived neurotrophic factor
BI – Barthel index
bFGF – Basic Fibroblast Growth Factor
CA – Cerebral aneurysm
CBF(v) – Cerebral blood flow (velocity)
DCE-MRI – Dynamic Contrast-Enhanced Magnetic Resonance Imaging
DWI – Diffusion Weighted Imaging
ET – Endovascular Therapy
FMD – Flow Mediated Dilatation
FSS – Fatigue Severity Score
GOSE – Extended Glasgow Outcome Scale
GFAP – Glial Fibrillary Acidic Protein
HDS – Hamilton Depression Scale
HIF-1 α – Hypoxia-inducible Factor 1-Alpha
HSP – Heat shock proteins
HS-CRP – High Sensitivity C Reactive Protein
ICAM-1 – Intracellular Adhesion Molecule 1
ICH – Intracerebral Haemorrhage
IL-1 β – Interleukin 1 Beta
IL-4 – Interleukin 4
IL-6 – Interleukin 6
IL-10 – Interleukin 10
LL – Lower Limb
LVO – Large Vessel Occlusion
MMP-9 – Matrix metalloproteinase-9
MFI – Multidimensional Fatigue Inventory
MMSE – Mini-Mental State Examination
MOCA – Montreal Cognitive Assessment

mRS – Modified Rankin Scale
NDS – Non-disabling Stroke
NIHSS – National Institutes of Health Stroke Scale
NSE – Neuron-Specific Enolase
QoL – Quality of Life Assessment
S100B – S100 calcium-binding protein B
SAH – Subarachnoid Haemorrhage
SBP – Systolic Blood Pressure
sIntraCAS – Symptomatic Intracranial Atherosclerosis
sCAS – Symptomatic Coronary Artery Stenosis
SPECT – Single Photon Emission Computed Tomography
TCD – Transcranial Doppler
TEG-MA – Thromboelastography
TIA – Transient Ischaemic Attack
TICS-M – Modified Telephone Interview for Cognitive Status

TLR-2 – Toll-like Receptor 2
TNF α – Tumour Necrosis Factor Alpha
tPA – Tissue Plasminogen Activator (Intravenous Thrombolysis)
UL – Upper Limb
VEGF – Vascular Endothelial Growth Factor

62. Li X-Q, Tao L, Zhou Z-H et al. Remote ischemic conditioning for acute moderate ischemic stroke (ricamis): Rationale and design. *International Journal of Stroke*.0:1747493019879651
63. Landman T, Schoon Y, Warlé M et al. The effect of repeated remote ischemic postconditioning on infarct size in patients with an ischemic stroke (repost): Study protocol for a randomized clinical trial. *Trials*. 2019;20:167
64. Li Y, Liang K, Zhang L et al. Upper limb ischemic postconditioning as adjunct therapy in acute stroke patients: A randomized pilot. *Journal of Stroke and Cerebrovascular Diseases*. 2018;27:3328-3335
65. Sangeetha RP, Ramesh VJ, Kamath S et al. Effect of remote ischemic preconditioning on cerebral vasospasm and biomarkers of cerebral ischemia in aneurysmal subarachnoid hemorrhage (ervas): A protocol for a randomized, controlled pilot trial. *Brain circulation*. 2019;5:12-18
66. Liu SM, Zhao WL, Song HQ et al. Rationale and study design for a single-arm phase iia study investigating feasibility of preventing ischemic cerebrovascular events in high-risk patients with acute non-disabling ischemic cerebrovascular events using remote ischemic conditioning. *Chinese Med J-Peking*. 2018;131:347-351

Supplementary material 2. Serum biomarkers under investigation as mechanistic markers of the effects of Remote Ischaemic Conditioning in Stroke.

Serum Biomarker	Study
S100B	RIPAT (NCT02162654) ²⁶ , ERVAS ⁵⁸
NSE	RIPAT (NCT02162654) ²⁶ , ERVAS ⁵⁸
GFAP	RIPAT (NCT02162654) ²⁶
MMP-9	RIPAT (NCT02162654) ²⁶ , rTPA-RIC (NCT02886390), PICASSO (NCT03208166)
BDNF	RICAMIS (NCT03740971) ⁵⁵
VEGF	RICAMIS (NCT03740971) ⁵⁵ , TRIPCAIS (NCT03218293), EPIC-sICAS (NCT02323425),
HIF-1 α	RICAMIS (NCT03740971) ⁵⁵
TNF- α	RICAMIS (NCT03740971) ⁵⁵
IL-1 β	RICAMIS (NCT03740971) ⁵⁵
IL-4	
IL-6	RICAMIS (NCT03740971) ⁵⁵ , rTPA-RIC (NCT02886390), RIC-SIID (NCT04069546)
IL-10	PICASSO (NCT03208166)
TLR-2	RIC-SIID (NCT04069546)
MicroRNA	RESIST (NCT03481777)
HS-CRP	rTPA-RIC (NCT02886390), PICASSO (NCT03208166)
bFGF	TRIPCAIS (NCT03218293), EPIC-sICAS (NCT02323425)
TEG-MA	ChiCTR-INR-17012308
Platelet reactivity	NCT03635177
Epinephrine	NCT04039399
Norepinephrine	NCT04039399
Nitrite	PICASSO (NCT03208166)
ICAM-1	ChiCTR-1900026034
Endothelin-1	ChiCTR-1900026034

S100B – S100 calcium-binding protein B

NSE – Neuron-Specific Enolase

GFAP – Glial Fibrillary Acidic Protein

MMP-9 – Matrix metalloproteinase-9

BDNF – Brain-derived neurotrophic factor

VEGF – Vascular Endothelial Growth Factor

HIF-1 α – Hypoxia-inducible Factor 1-Alpha

TNF α – Tumour Necrosis Factor Alpha

IL-1 β – Interleukin 1 Beta

IL-4 – Interleukin 4

IL-6 – Interleukin 6

IL-10 – Interleukin 10

TLR-2 – Toll-like Receptor 2

HS-CRP – High Sensitivity C Reactive Protein

bFGF – Basic Fibroblast Growth Factor

TEG-MA – Thromboelastography

ICAM-1 – Intracellular Adhesion Molecule 1