

This is a repository copy of *Fungal GH25 muramidases : New family members with applications in animal nutrition and a crystal structure at 0.78Å resolution*.

White Rose Research Online URL for this paper:

<https://eprints.whiterose.ac.uk/172616/>

Version: Published Version

---

**Article:**

Moroz, Olga V., Blagova, Elena, Taylor, Edward et al. (12 more authors) (2021) Fungal GH25 muramidases : New family members with applications in animal nutrition and a crystal structure at 0.78Å resolution. PLoS ONE. e0248190. ISSN 1932-6203

<https://doi.org/10.1371/journal.pone.0248190>

---

**Reuse**

This article is distributed under the terms of the Creative Commons Attribution (CC BY) licence. This licence allows you to distribute, remix, tweak, and build upon the work, even commercially, as long as you credit the authors for the original work. More information and the full terms of the licence here:

<https://creativecommons.org/licenses/>

**Takedown**

If you consider content in White Rose Research Online to be in breach of UK law, please notify us by emailing [eprints@whiterose.ac.uk](mailto:eprints@whiterose.ac.uk) including the URL of the record and the reason for the withdrawal request.

RESEARCH ARTICLE

# Fungal GH25 muramidases: New family members with applications in animal nutrition and a crystal structure at 0.78Å resolution

Olga V. Moroz<sup>1</sup>, Elena Blagova<sup>1</sup>, Edward Taylor<sup>1,2a</sup>, Johan P. Turkenburg<sup>1</sup>, Lars K. Skov<sup>2</sup>, Garry P. Gippert<sup>2</sup>, Kirk M. Schnorr<sup>2</sup>, Li Ming<sup>3</sup>, Liu Ye<sup>3</sup>, Mikkel Klausen<sup>2</sup>, Marianne T. Cohn<sup>2</sup>, Esben G. W. Schmidt<sup>2</sup>, Søren Nymand-Grarup<sup>2ab</sup>, Gideon J. Davies<sup>1</sup>, Keith S. Wilson<sup>1\*</sup>

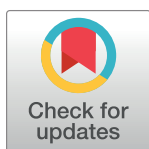
**1** Department of Chemistry, Structural Biology Laboratory, The University of York, York, United Kingdom,

**2** Novozymes A/S, Kongens Lyngby, Denmark, **3** Novozymes Investment Co. Ltd., Beijing, China

<sup>2a</sup> Current address: School of Life Sciences, Joseph Banks Laboratories, University of Lincoln, Green Lane, Lincoln, United Kingdom

<sup>2b</sup> Current address: Christian Hansen A/S, Hørsholm, Denmark

\* [keith.wilson@york.ac.uk](mailto:keith.wilson@york.ac.uk)



## OPEN ACCESS

**Citation:** Moroz OV, Blagova E, Taylor E, Turkenburg JP, Skov LK, Gippert GP, et al. (2021) Fungal GH25 muramidases: New family members with applications in animal nutrition and a crystal structure at 0.78Å resolution. PLoS ONE 16(3): e0248190. <https://doi.org/10.1371/journal.pone.0248190>

**Editor:** Israel Silman, Weizmann Institute of Science, ISRAEL

**Received:** November 27, 2020

**Accepted:** February 19, 2021

**Published:** March 12, 2021

**Copyright:** © 2021 Moroz et al. This is an open access article distributed under the terms of the [Creative Commons Attribution License](https://creativecommons.org/licenses/by/4.0/), which permits unrestricted use, distribution, and reproduction in any medium, provided the original author and source are credited.

**Data Availability Statement:** The crystal structures are deposited in the Protein Data Bank (PDB) at <https://www.rcsb.org/> (structures 6ZM8 and 6ZMV). The protein sequence is in GenBank at <https://www.ncbi.nlm.nih.gov/genbank/> (accession MN603102).

**Funding:** The work was supported by Novozymes: the funder provided support in the form of salaries for authors [LKS, GPG, KMS, LM, LY, MK, MTC, EGWS, SN-G], but did not have any additional role

## Abstract

Muramidases/lysozymes hydrolyse the peptidoglycan component of the bacterial cell wall. They are found in many of the glycoside hydrolase (GH) families. Family GH25 contains muramidases/lysozymes, known as CH type lysozymes, as they were initially discovered in the *Chalaropsis* species of fungus. The characterized enzymes from GH25 exhibit both  $\beta$ -1,4-*N*-acetyl- and  $\beta$ -1,4-*N*,6-O-diacetylmuramidase activities, cleaving the  $\beta$ -1,4-glycosidic bond between *N*-acetylmuramic acid (NAM) and *N*-acetylglucosamine (NAG) moieties in the carbohydrate backbone of bacterial peptidoglycan. Here, a set of fungal GH25 muramidases were identified from a sequence search, cloned and expressed and screened for their ability to digest bacterial peptidoglycan, to be used in a commercial application in chicken feed. The screen identified the enzyme from *Acremonium alcalophilum* JCM 736 as a suitable candidate for this purpose and its relevant biochemical and biophysical properties are described. We report the crystal structure of the *A. alcalophilum* enzyme at atomic, 0.78 Å resolution, together with that of its homologue from *Trichobolus zukalii* at 1.4 Å, and compare these with the structures of homologues. GH25 enzymes offer a new solution in animal feed applications such as for processing bacterial debris in the animal gut.

## 1. Introduction

Muramidases (*N*-acetylmuramide glycanhydrolases), also known as lysozymes, cleave the bacterial cell wall peptidoglycan component at the  $\beta$ -1,4-glycosidic bond between *N*-acetylmuramic acid (NAM) and *N*-acetylglucosamine (NAG) in the carbohydrate backbone. They were first discovered in 1922 by Fleming, who observed antibacterial action when he treated bacterial cultures with nasal mucus from a patient suffering from a cold; he gave the enzyme the name “lysozyme” [1] and showed that similar enzymes were found in a number of other

in the study design, data collection and analysis, decision to publish, or preparation of the manuscript. The specific roles of these authors are articulated in the 'author contributions' section. EJT gratefully acknowledges financial support from the Royal Society (GB), UF100116 and the Biotechnology and Biological Sciences Research Council (BBSRC) DTA A0031002. GJD is the Royal Society (GB), RP150126 "Ken Murray" Research Professor.

**Competing interests:** The work was supported by Novozymes: the funder provided support in the form of salaries for authors [LKS, GPG, KMS, LM, LY, MK, MTC, EGWS, SN-G]. Commercial affiliation with Novozymes does not alter our adherence to PLOS ONE policies on sharing data and materials.

**Abbreviations:** CAZy, Carbohydrate-Active enZymes Database; GH, glycoside hydrolase; HEWL, HEWL: hen egg white lysozyme; CAZy, Carbohydrate-Active enZymes Database; AaMur, The muramidase from *Acremonium alcalophilum* JCM 736; TzMur, The muramidase from *Trichobolus zukalii*; NAG, *N*-acetylglucosamine; NAM, *N*-acetylmuramic acid.

animals, including hens (hen egg white lysozyme, HEWL). These enzymes were subsequently classified in glycoside hydrolase (GH) family 22 (see the Carbohydrate Active Enzymes database (CAZy; <http://www.cazy.org/>) [2,3]. The Enzyme Commission assigned these proteins the number E.C.3.2.1.17 and recommended that the name lysozyme be replaced by muramidase or *N*-acetylmuramide glycanohydrolase [4]. However, the name lysozyme has persisted, together with several alternatives, including 1,4-*N*-acetylmuramidase mucopeptide *N*-acetylmuramoyl-hydrolase; PR1-lysozyme—see a full list in the CAZy database, as well as lysins (mostly for phage enzymes). The name muramidase will be used throughout the present report.

Muramidases are found in several GH families annotated in CAZy: GH22, GH23, GH24, GH25, GH73, GH104 and GH108. Although all these families contain members that cleave the same substrate, they do so by a number of different mechanisms. The focus of the present study is on the fungal members of the GH25 family: ([https://www.cazypedia.org/index.php/Glycoside\\_Hydrolase\\_Family\\_25](https://www.cazypedia.org/index.php/Glycoside_Hydrolase_Family_25)), also called the *Chalaropsis* (CH) type, based on their initial characterisation in this species of fungus [5,6] and from the first structure of a family member, the bacterial *Streptomyces coelicolor* [7]. GH25 muramidases are mainly present in microorganisms, with diverse functions from remodelling of the cell wall in bacteria during cell division [8] to lysing the bacterial cell wall at the end of the phage life cycle in bacteriophage, and antibacterial action in archaea and eukaryotes [9]. In the latter comparative genomics study, it was suggested that the ancestral gene originated from bacteria and spread through other domains of life by horizontal gene transfer, where non-bacterial organisms used it to compete in a bacterial world. Many of the fungal muramidases are clearly extracellular since they include a signal secretion peptide [10].

Muramidases from GH22 are used in a number of industrial applications, such as antibacterials for food conservation, as an additive to infant milk formula, in the cheese industry [11] or in biomedical research for facilitating degradation of bacterial cell walls during protein expression in *Escherichia coli* ([12] and references therein). Our aim was to identify a different type of muramidase to act as a feed additive for processing bacterial debris in the gut of animals (particularly chickens). For this application gastric stability is an important property that limits the use of HEWL as a feed additive [13]. We further required that the enzyme is not toxic to the usual set of bacterial flora—i.e. will not disrupt normal healthy bacterial activity in the gut. Hence, in the initial screening we searched for a gastric stable muramidase with a broad promiscuous specificity on peptidoglycan, which was not too active and would probably have low "normal" antibacterial activity. Other parameters, such as temperature stability, high expression levels in our normal production hosts, and *in vivo* testing, were also important. A total of 55 fungal GH25s were screened, substantially increasing the number of characterized fungal GH25s.

The enzyme from *Acremonium alcalophilum* JCM 7366 (*A. alcalophilum* is now known as *Sodiomyces alcalophilus* (G. Okada) Giraldo López & Crous, but we will use the AaMur abbreviation for the muramidase in this paper) finally proved to be the muramidase of choice. *A. alcalophilum* was first isolated from pig manure over 30 years ago by a Japanese researcher, A. Yoneda, and provides a genetic resource for identifying extracellular enzymes with pH optima in the alkaline range [14]. AaMur was originally included in the diversity generation because of this interesting alkaline property, but as described later it has optimum in the slightly acidic range. Later AaMur was expressed in a *Trichoderma reesei* production host, evaluated as a feed additive in a toxicology study [15] and recently developed into a commercial product [16,17] (Balancius<sup>TM</sup> from DSM nutritional products, Kaiseraugst, Switzerland) that gives improved utilization of feed ingredients. It is believed that the mode of action for AaMur in the feed application is to break down cell debris peptidoglycans in the gut, which would otherwise be blocking the villi, thereby increasing nutrient uptake. It was demonstrated that the product is

safe in use for chickens and for consumers and that, with the dose used in the application, AaMur did not have an antimicrobial effect on the bacteria tested [18], including *E. coli* ATCC 25922, *Pseudomonas aeruginosa* ATCC 27853, *Staphylococcus aureus* ATCC 25923, *Enterococcus faecalis* ATCC 29212, *Bacillus subtilis* ATCC 6633, *Campylobacter jejuni* ATCC 33560 and *Clostridium perfringens* ATCC 13124. In a recent study it was shown that the plate count results for *Lactobacillus* and enterobacteria did not show a significant difference with the inclusion of the muramidase in chicken feed when looking at samples from crop, ileum or cecum [19]. As stated in the previous paragraph these were the low antimicrobial properties we were looking for in the initial screening.

GH25 muramidases are structurally unrelated to the other lysozyme families and have a modified  $\alpha/\beta$ -barrel-like fold which differs from the classical  $(\beta\alpha)_8$  “TIM-barrel” (where TIM stands for triose phosphate isomerase [20,21]) in that its eight-stranded  $\beta$ -barrel is only flanked by five  $\alpha$ -helices, rather than eight, so is called  $(\beta\alpha)_5(\beta)_3$ —first described for the *Streptomyces coelicolor* enzyme “cellosyl” (1JFX [7]). There are structures in the PDB for three bacteriophage, six bacterial but only one fungal GH25 enzyme, Table 1. The structure of modular autolysin LytC from *Streptococcus pneumoniae* was in addition obtained in complex with a pneumococcal peptidoglycan domain. The enzyme from *Clostridium perfringens* phage phiSM101 is of particular interest because it is a complex with the ligand, 2-(acetylamino)-2-deoxy- $\alpha$ -D-glucopyranose (NDG), located in the binding site close to the active motif DXE, discussed in Results and discussion section.

Here we report on the selection of AaMur after screening a set of fungal muramidases. Selection criteria included activity against peptidoglycan from *Micrococcus lysodeikticus* and *Lactobacillus johnsonii*, tolerance to the environment in a poultry gut and pH profile. In addition, we present the crystal structures of AaMur and also of the homologous *Trichobolus zuka-lui* (henceforth named TzMur). The structures are compared with those of previously determined GH25 enzymes.

## 2. Materials and methods

### 2.1 Screening for a suitable fungal muramidase

55 fungal GH25 muramidases were identified by bioinformatic tools exploiting public and internal Novozymes strain collections and databases, and were subsequently cloned and

**Table 1. Structures of family GH25 muramidases in the PDB.**

Enzyme	Species	PDB	Complex	Reference
Endolysin PlyB	Bacteriophage P40 of <i>Listeria monocytogenes</i>	4JZ5		None.
Clp-1 lysozyme	Bacteriophage of <i>Streptococcus pneumoniae</i>	1H09, 1OBA, 2IXU, 2J8G, 2J8F, 2IXV		[22,23]
Muramidase	<i>Clostridium perfringens</i> phage phiSM101	4KRT, 4KRU	2-(acetylamino)-2-deoxy- $\alpha$ -D-glucopyranose (NDG)	[24]
Muramidase	<i>Bacillus anthracis</i> Ames	2WAG		[25]
Muramidase	<i>Bacillus anthracis</i> Sterne	3HMC		[26]
S40 SleM CLE muramidase	<i>Clostridium perfringens</i>	5JIP		[27]
Modular autolysin LytC	<i>Streptococcus pneumoniae</i> R6	2WWD, 2WWC, 2WW5	Pneumococcal peptidoglycan fragment	[28]
Virulence factor	<i>Streptococcus pneumoniae</i> TIGR4	4FF5		[29]
Muramidase	<i>Streptomyces coelicolor</i>	1JFX		[7]
Muramidase	<i>Aspergillus fumigatus</i>	2X8R		[30]

<https://doi.org/10.1371/journal.pone.0248190.t001>

expressed by standard methods [31]. Unless otherwise stated all chemicals/reagents were purchased from Sigma-Aldrich and were reagent grade. Purifications were carried out by standard techniques, typically involving cation or anion exchange. Details about the cloning and expression of AaMur and TzMur, and the purification of AaMur can be found in the Supporting information. Muramidase activity was measured for the 55 enzymes using the turbidity and the reducing ends assays detailed below. The turbidity assay was also used in the test for gastric stability.

**2.1.1. Preparation of peptidoglycan for assays.** Lyophilized cells of *Micrococcus lysodeikticus* ATTC No. 4698 were obtained from Sigma-Aldrich (M3770) and were used as the peptidoglycan source in the various assays described below. Peptidoglycan was extracted from a cultivation of *Lactobacillus johnsonii* DSM10533 (see procedure in Supporting information).

**2.1.2. Activity assay by reduction in turbidity (the OD-drop assay).** The OD-drop assay measures muramidase/lysozyme activity through a reduction in optical density (OD) caused by turbidity (light scattering) as described in many papers on HEWL [32,33]. Enzyme activities at 37°C were determined by measuring the decrease (drop) in optical density of a solution of resuspended *M. lysodeikticus* ATTC No. 4698 (Sigma-Aldrich M3770) measured in a spectrophotometer at 450 nm ([34] and <https://www.sigmaaldrich.com/technical-documents/protocols/biology/enzymatic-assay-of-lysozyme.html>). Before use, *M. lysodeikticus* cells were resuspended in citric acid/phosphate buffer pH 4.0 to a concentration of 0.5 mg cells/mL and the OD at 450 nm was measured. The cell suspension was adjusted so the cell concentration equaled an OD<sub>450</sub> of 1.0 and the adjusted cell suspension was stored at 4°C before use. Resuspended cells were used within four hours. The values in Table 4 are averages of three determinations of the reductions in OD<sub>450</sub> after 60 minutes reaction time with a muramidase concentration of 4.5 µg/mL

**2.1.3 Gastric stability.** The muramidases were challenged by a 15 minute incubation at pH 3.0 and 37°C in the presence of pepsin (474 U/mL) before the residual activity toward *M. lysodeikticus* was measured using the OD-drop method described above. The muramidases were dosed as 4.5 µg/mL in the assay and the activity of the muramidases was determined at pH 4.0. Activity of the challenged sample was compared to an unchallenged sample and the resulting residual activity (in %) recorded.

**2.1.4 Activity on peptidoglycan at pH 5.0 using a reducing ends assay.** When peptidoglycan is hydrolysed by a muramidase new saccharide reducing ends (aldehyde groups) are produced and the increase in reducing ends is used as a measure of glycolytic activity. After incubation, the amount of reducing ends produced was determined by reaction with para-hydroxybenzoic acid hydrazide. The resulting hydrazone has a yellow colour and can be detected at 405 nm.

The muramidases were diluted in phosphate dilution buffer (5 mM citrate, 5 mM K<sub>2</sub>HPO<sub>4</sub>, 0.01% TritonX-100, pH 5.0) to 200 or 50 µg/mL in polypropylene tubes, dependent on the strength of available stock solutions. The solutions were further diluted in a 96-well polypropylene microtiter plate by preparing a two-fold dilution series down to a concentration of 6.3 µg/mL in phosphate dilution buffer. The incubation can be performed at different pHs (see section 2.2.4), here we used pH 5.0 in order to be closer to intestinal pH. The assay can be performed with peptidoglycan from several source, we describe it below with *L. johnsonii* as an example.

A 50 mg/mL stock solution of *L. johnsonii* substrate in water was prepared and diluted in phosphate buffer (50 mM citrate, 50 mM K<sub>2</sub>HPO<sub>4</sub>, pH 5.0) to 250 µg/mL. In a polypropylene deep-well plate 50 µL of the muramidase dilution was mixed with 450 µL *L. johnsonii* solution and incubated at 40°C with shaking (500 rpm) for 45 min. After incubation, the deep-well plates were centrifuged (3200 rpm, 7 min) to pellet insoluble material and 100 µL of the

supernatant was mixed with 50  $\mu$ L 3.2 M HCl in a 96-well PCR plate and incubated at 95°C for 80 min. 50  $\mu$ L of 3.5 M NaOH was added to each well of the PCR plate, and 150  $\mu$ L of each sample was transferred to a new PCR plate containing 75  $\mu$ L/well 4-hydroxybenzhydrazide (PAHBAH) solution in K-Na tartrate/NaOH buffer (50 g/L K-Na tartrate + 20 g/L NaOH). The plate was incubated at 95°C for 10 min before 100  $\mu$ L/sample was transferred to a clear flat-bottomed microtiter plate for optical density (OD) measurement at 405 nm. OD measurements were performed on three times diluted samples (50  $\mu$ L sample diluted in 100  $\mu$ L in Milli-Q water at 25°C). The OD measurement values shown in Table 4 represent the difference after the original (background) reading was subtracted and are the average of two OD measurement values.

## 2.2 Further investigations of AaMur and TzMur

Following the screening of the fungal enzymes, biochemical and biophysical characterisation was performed on selected muramidases, primarily AaMur and TzMur.

**2.2.1 Thermostability using nano Differential Scanning Fluorescence.** Nano Differential Scanning Fluorescence (nanoDSF) was performed on eight of the muramidases with a Prometheus NT.48 instrument (NanoTemper Technologies GmbH, München, Germany). Purified samples (in either 50 mM Na-acetate, pH 3.0, or 50 mM Na-acetate, pH 5.0) were loaded into nanoDSF standard grade capillaries (NanoTemper Technologies GmbH) through capillary action. Three capillaries were filled for each sample, placed into the instrument (up to 48 single capillaries can be loaded in a single run) and the laser intensity required for optimum signal generation was determined. The samples were run with the following experimental setting: temperature slope 2°C/minute, start temperature 20°C and end temperature 95°C. The data were analysed using the software supplied with the instrument (PR.ThermControl v2.0.4, NanoTemper Technologies GmbH) and the melting point,  $T_m$  (°C), (for the ratio 350 nm/330 nm) was determined.

**2.2.2 Thermostability of AaMur at pH 4.5, 5.5 and 6.5 using Differential Scanning Calorimetry.** An aliquot of purified AaMur was buffer-exchanged (50 mM Na-acetate, pH 4.5; 50 mM Na-acetate, pH 5.5; or 50 mM MES (2-(N-morpholino)ethanesulfonic acid), pH 6.5) using prepacked PD-10 columns. The sample was 0.45  $\mu$ m filtered and diluted with buffer to approximately 2 A<sub>280</sub> units, with the buffer as reference solution. The thermostability of the muramidase at different pH values was determined by Differential Scanning Calorimetry (DSC) using a VP-capillary DSC instrument (MicroCal Inc., Piscataway, NJ, USA) equipped with an auto sampler. The thermal melting point,  $T_m$ , was taken as the top of the denaturation peak (major endothermic peak) in the thermograms (Cp vs. T) obtained after heating the muramidase solutions in the buffer at a constant programmed heating rate. Sample and reference solutions (approx. 0.5 mL) were thermally pre-equilibrated for 10 minutes at 20°C and the scan was performed from 20 to 110°C at a scan rate of 200 K/hour. Data-handling was performed using the MicroCal Origin software (version 7.0383).  $T_m$ 's were determined with an accuracy of approximately  $\pm$  0.5°C.

**2.2.3 pH optimum using the OD assay.** The pH activity profiles of AaMur and TzMur on *M. lysodeikticus* peptidoglycan were determined using a modified OD-drop assay. The *M. lysodeikticus* substrate was prepared as described under "Activity assay by reduction in turbidity (the OD-drop assay)" except that the citric acid-phosphate buffer was adjusted to one of the following pH values with HCl or NaOH prior to the start of the experiment: 3.0, 3.5, 4.0, 4.5, 5.0, 5.5, 6.0, 6.5 and 7.0.

**2.2.4 pH-profiles of AaMur and TzMur using the reducing end assay.** The reducing end assay was run at a range of pH in the incubation step (Buffer: 100 mM Glycine, 100 mM

KH<sub>2</sub>PO<sub>4</sub>, 100 mM MES, 0.01% TX-100, adjusted to appropriate pH 3–10) using *M. lysodeikticus* as substrate.

### 2.3. Structure solution for AaMur and TzMur

For both proteins, the initial crystallisation was carried out in a number of commercial screens using sitting-drop vapour-diffusion with drops set up using a *Mosquito Crystal* liquid handling robot (SPT LabTech, UK) with 150 nL protein solution plus 150 nL reservoir solution in 96-well format plates (MRC 2-well crystallization microplate, Swissci, Switzerland) equilibrated against 54 µL reservoir solution. All computations were carried out using programs from the CCP4 suite [35], unless otherwise stated. Data collection and processing and final refinement statistics are given in Table 2. Structure figures were drawn with CCP4mg [36]. The quality of the final models was validated using Molprobit [37].

**2.3.1. Acremonium alcalophilum.** Crystals grew in multiple conditions of the initial screens. Data were collected from several crystals cryoprotected with 30% ethylene glycol (3 µL ethylene glycol added to 6 µL of well solution) and the best dataset, from JCSG C1 (0.2 M NaCl, 0.1 M phosphate/citrate pH 4.2, 20% w/v PEG 8K) was selected for refinement. Data were collected at the Diamond Light Source, beamline I24 to a resolution of 0.78 Å, and processed using XDS [39] within the xia2 pipeline [40], and merged in Aimless [41]. The structure was solved by molecular replacement with MOLREP [42], using as search model the GH25 enzyme from *Aspergillus fumigatus* (PDB code 2X8R [30]). The structure was rebuilt with Buccaneer and refined with alternating cycles of REFMAC5 [43] and COOT [44].

**2.3.2. Trichobolus zukalii.** A number of clusters of crystals grew in the first Ammonium Sulphate screen (Qiagen). Due to the limited amount of material, the drops were re-dissolved to obtain a sample for manual optimisation, with the final crystals obtained in a 24 well 'Linbro-style' vapour diffusion crystal growth plate, in a hanging drop set up. The final conditions were 0.6–0.7 M lithium-sulphate, 0.5 M ammonium sulphate, 0.1 M Na-citrate. These were mostly inter-grown plates from which a number were separated and tested in house, where they diffracted to around 2.2 Å. The crystals were cryo-protected with 25% glycerol added to the crystallisation medium. Data were collected at the Diamond Light Source beamline I04-1 to 1.4 Å resolution and integrated XDS within xia2 [40]. The structure was solved by molecular replacement using Molrep with the GH25 enzyme from *Aspergillus fumigatus*, PDB code 2X8R as search model. The chain was rebuilt manually, and the structure refined with alternating cycles of REFMAC and COOT.

## 3. Results and discussion

### 3.1. Screening for an optimal fungal GH25 muramidase

Genes for the set of fungal GH25 muramidases were cloned and the corresponding enzymes overexpressed using standard procedures as described in Materials and Methods and in the Supporting information. The evolutionary tree of the complete set of 55 GH25s and public fungal GH25 sequences in the CAZy-database is shown in Fig 1. There is presently a total of over 10,000 sequences for GH25 family enzymes in the database, but the vast majority are of bacterial origin. Only 49 are from eukaryotes, so the 55 muramidases presented here is a significant expansion of the fungal GH25 diversity. Out of the 10,000 sequences listed in the database only 31 are listed as “characterized”, so there is a huge lack of biochemical data on GH25 muramidases.

After purification the enzymes were screened by the OD-drop assay, gastric stability, and the reducing end assay (on two peptidoglycan sources). The OD-drop assay measures muramidase/lysozyme activity through a reduction in optical density (OD) caused by turbidity (light

**Table 2. Crystallographic statistics.** Values in parentheses are for the outer resolution shell.

	<b>AaMur</b>	<b>TzMur</b>
Diffraction source	Diamond I24	Diamond I04
Wavelength (Å)	0.65	0.98
Space group	P2 <sub>1</sub>	P1
<i>a</i> , <i>b</i> , <i>c</i> (Å)	34.087, 77.272, 35.728	39.398, 48.582, 55.737
$\alpha$ , $\beta$ , $\gamma$ (°)	90.0, 104.2, 90.0	97.1, 99.5, 98.2
Resolution range (Å)	38.64–0.78 (0.79–0.78)	27.17–1.40 (1.42–1.40)
Total No. of reflections	793,527 (24,210)	155,691 (5146)
No. of unique reflections	201,033 (8,829)	73,721 (2699)
Completeness (%)	99.1 (87.6)	93.8 (69.0)
Redundancy	3.9 (2.7)	2.1 (1.9)
CC(1/2) <sup>a)</sup>	0.979 (0.356)	0.992 (0.956)
$\langle I/\sigma(I) \rangle$	5.4 (0.8)	15.8 (7.6)
$R_{\text{merge}}$ <sup>b)</sup>	0.149 (1.456)	0.045 (0.122)
$R_{\text{r.i.m.}}$ <sup>c)</sup>	0.082 (0.996)	0.038 (0.103)
Overall <i>B</i> factor: Wilson plot (Å <sup>2</sup> )	5.4	5.05
Refinement		
No. reflections, working set	200,983	73721
No. reflections, test set	10,021	3717
Final $R_{\text{cryst}}$ (%)	11.6	9.7
Final $R_{\text{free}}$ (%)	13.0	13.7
No. of non-H atoms		
Protein	1,768	3,353
Solute	12	85
Water	331	690
Total	2,111	4,128
R.m.s. deviations		
Bonds (Å)	0.0216	0.0175
Angles (°)	1.83	1.94
Average <i>B</i> factors (Å <sup>2</sup> )		
Protein	8.8	8.4
Solute	26.1	18.6
Water	23.7	34.7
Molprobrity score	1.62	1.48
Ramachandran plot		
Most favoured (%)	98.1	98.3
Outliers (%)	0.0	0.0
PDB code	6ZM8	6ZMV

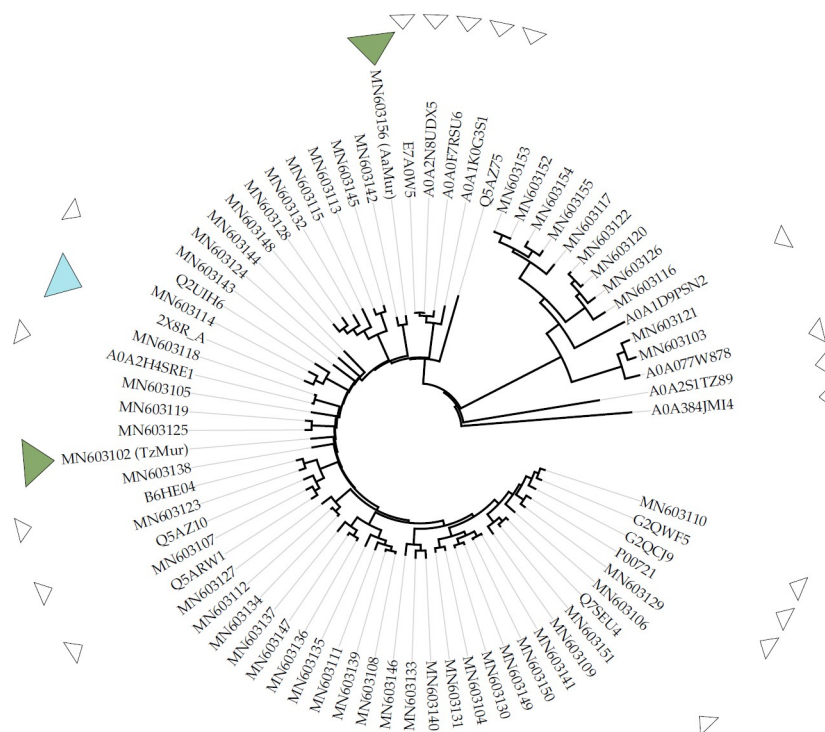
a) CC<sub>1/2</sub> values for I<sub>mean</sub> are calculated by splitting the data randomly in half.

b)  $R_{\text{merge}}$  is defined as  $\sum_{\text{hkl}} \sum_j |I_{\text{hkl},j} - \langle I_{\text{hkl}} \rangle| / \sum_{\text{hkl}} \sum_j I_{\text{hkl},j}$  where *I* is the intensity of the reflection.

c) Redundancy-independent merging R factor  $R_{\text{r.i.m.}}$  [38].

<https://doi.org/10.1371/journal.pone.0248190.t002>

scattering), while the reducing ends assay determines the solubilisation of carbohydrates from peptidoglycan. The OD-drop assay was meant to check for muramidase activity, but it was found that a low value in this assay does not exclude muramidase activity on other types of peptidoglycans. Gastric stability measured with the OD-drop assay was one of the key selection parameters since the muramidase needs to survive the stomach before it can work in the



**Fig 1. Evolutionary tree of fungal GH25 muramidases.** The set of 55 GH25 sequences included in the screening process (GenBank accession id:MN603101 to MN603156) and public fungal GH25 sequences in the CAZy-database [3] ([https://www.cazypedia.org/index.php/Glycoside\\_Hydrolase\\_Family\\_25](https://www.cazypedia.org/index.php/Glycoside_Hydrolase_Family_25)). The open triangles indicate a public sequence, the light-blue triangle is a fungal GH25 structure from the PDB while the green triangles indicate the structures reported here. The organism names of MN603101-MN603156 are given in Table 3.

<https://doi.org/10.1371/journal.pone.0248190.g001>

intestines. The simulated gastric stability of the 55 muramidases at pH 3 in the presence of pepsin showed that several (including AaMur and TzMur) were gastric stable (Table 3 and Fig 2). The aim was to identify an enzyme with high gastric stability, and candidates with values above ~90% were considered to be sufficiently stable. Due to the high variation in the OD-drop assay some residual activities were above 100%, however these were not considered more stable. All the screening data are summarised in Table 3.

The columns are as follows: 1) sequence identifier (NCBI code), 2) species name (some organisms have more than one GH25), 3) Activity on *M. lysodeikticus* using the OD-drop assay at pH 4.0 and 4.5 µg/mL, 4) Gastric stability in %-survival after incubation at pH 3.0 in the presence of pepsin, 5) Activity (OD change at 405 nm) on *M. lysodeikticus* using the reducing ends (RE) assay at pH 5.0 and 0.7 µg/mL, 6) Activity (OD change at 405 nm) on *L. johnsonii* peptidoglycan pH 5.0 at 1.25 µg/mL.

*M. lysodeikticus* is an obligate aerobe that is found on mammalian skin, in the mouth and in the upper respiratory tract while *L. johnsonii* is an aerotolerant anaerobes. *L. johnsonii* is a representative of Lactobacilli that is part of the gut microbiota [45]. In the screening *L. johnsonii* was therefore considered more application relevant than *M. lysodeikticus*. It can be seen from Table 3 that 10 muramidase were gastric stable (>90% residual activity) and had values of more than 0.2 in the reducing ends assay on peptidoglycan from *L. johnsonii*.

## 3.2. Temperature stability and pH optimum/profiles of AaMur and TzMur

**3.2.1. Temperature stability by nano-DSF for AaMur, TzMur and 6 other GH25s.** The melting temperatures,  $T_m$ , were determined using nano-DSF for 8 of the GH25 muramidases

Table 3. The screening results for the 55 fungal muramidases.

NCBI ID	Organism	OD on MI pH 4.0	% Gastric stability	RE MI	RE Lj
MN603102	<i>Trichobolus zukalii</i> (TzMur)	0.10	99	1.98	0.26
MN603103	<i>Rhizomucor pusillus</i>	0.17	127	1.34	0.01
MN603104	<i>Poronia punctata</i>	0.19	28	1.78	0.14
MN603105	<i>Poronia punctata</i>	0.14	-2	0.85	0.01
MN603106	<i>Zopfiella</i> sp.	0.29	34	2.22	0.24
MN603107	<i>Aspergillus deflectus</i>	0.25	84	0.99	0.02
MN603108	<i>Pycnidiophora</i> sp.	0.22	108	2.32	0.1
MN603109	<i>Cladorrhinum bulbiliosum</i>	0.27	35	2.14	0
MN603110	<i>Arcopilus cupreus</i>	0.14	103	1.71	0.19
MN603111	<i>Sporormia fimetaria</i>	0.22	88	2.60	0.18
MN603112	<i>Paecilomyces</i> sp.	0.26	40	2.06	0.14
MN603113	<i>Paecilomyces</i> sp.	0.26	17	1.98	0.12
MN603114	<i>Aspergillus</i> sp.	0.22	20	0.93	0.19
MN603115	<i>Onygena equina</i>	0.24	ND	1.76	0.16
MN603116	<i>Penicillium citrinum</i>	0.14	ND	1.20	-0.02
MN603117	<i>Deconica coprophila</i>	0.17	101	1.80	-0.07
MN603118	<i>Lecanicillium</i> sp.	0.17	ND	1.79	0.4
MN603119	<i>Lecanicillium</i> sp.	0.24	55	2.03	0.17
MN603120	<i>Cordyceps farinosa</i>	0.16	100	1.72	-0.03
MN603121	<i>Thermomucor indicae-seudaticae</i>	0.21	36	1.38	-0.05
MN603122	<i>Lecanicillium</i> sp.	0.08	55	1.47	-0.08
MN603123	<i>Penicillium</i> sp. qii	0.29	97	2.07	0.27
MN603124	<i>Malbranchea flava</i>	0.24	0	1.56	0.34
MN603125	<i>Parengyodontium album</i>	0.24	150	2.40	0.59
MN603126	<i>Blackwellomyces cardinalis</i>	0.14	ND	1.94	0
MN603127	<i>Purpureocillium lilacinum</i>	0.24	135	2.88	0.12
MN603128	<i>Umbelopsis westeae</i>	0.19	104	2.33	0.24
MN603129	<i>Coniochaeta</i> sp.	0.22	88	2.11	0.07
MN603130	<i>Daldinia fissa</i>	0.17	30	1.30	0.04
MN603131	<i>Rosellinia</i> sp.	0.18	115	1.59	0.24
MN603132	<i>Flammulina velutipes</i> KACC42780	0.26	83	1.74	0.17
MN603133	<i>Hamigera paravellanea</i>	0.25	ND	1.74	0.02
MN603134	<i>Metapochonia bulbilosa</i>	0.25	93	2.09	0.18
MN603135	<i>Curreya</i> sp.	0.28	46	1.91	0.13
MN603136	<i>Ascobolus</i> sp.	0.29	108	1.79	0.12
MN603137	<i>Coniothyrium</i> sp.	0.29	51	1.23	0.12
MN603138	<i>Yunnania penicillata</i>	0.15	57	1.28	0.14
MN603139	<i>Westerdykella</i> sp.	0.15	90	1.94	0.19
MN603140	<i>Paracremonium inflatum</i>	0.11	133	2.59	0.08
MN603141	<i>Xylariaceae</i> sp.	0.16	39	1.52	0.05
MN603142	<i>Clonostachys rosmaniae</i>	0.11	86	1.24	0.02
MN603143	<i>Aspergillus inflatus</i>	0.07	88	2.03	-0.02
MN603144	<i>Metarhizium</i> sp.	0.03	95	2.24	-0.02
MN603145	<i>Simplicillium obclavatum</i>	0.15	78	1.68	0.21
MN603146	<i>Thermoascus aurantiacus</i>	0.09	61	2.39	0.15
MN603147	<i>Ascobolus</i> sp.	0.23	82	1.34	-0.01
MN603148	<i>Zygomycetes</i> sp.	0.21	98	2.52	0.69

(Continued)

Table 3. (Continued)

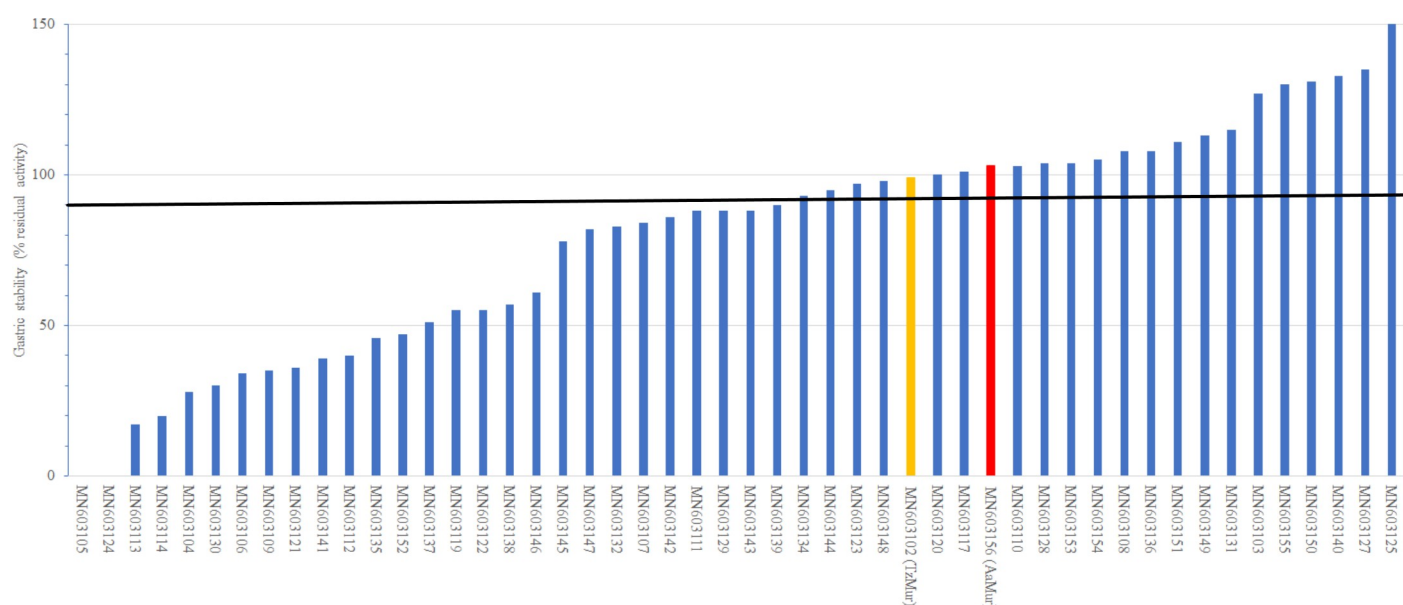
NCBI ID	Organism	OD on MI pH 4.0	% Gastric stability	RE MI	RE Lj
MN603149	<i>Hypoxylon sp.</i>	0.25	113	1.50	0.28
MN603150	<i>Hypoxylon sp.</i>	0.28	131	1.77	0.05
MN603151	<i>Gelasinospora cratophora</i>	ND	111	1.65	-0.09
MN603152	<i>Stropharia semiglobata</i>	ND	47	1.34	0.25
MN603153	<i>Stropharia semiglobata</i>	ND	104	1.52	0.16
MN603154	<i>Stropharia semiglobata</i>	ND	105	1.01	0.29
MN603155	<i>Hypholoma polytrichi</i>	ND	130	1.86	0.57
MN603156	<i>Acremonium alcalophilum</i> JCM 7366 (AaMur)	0.18	103	0.52	0.49

<https://doi.org/10.1371/journal.pone.0248190.t003>

at pH 3.0 and 5.0 (Table 4). Nano-DSF was not available to us during the initial screening of the 55 enzymes. Most material was used for other experiments, so nano-DSF was only carried out on candidates where sufficient material was available (reflecting expressibility in the fungal host *Aspergillus oryzae*).

From these experiments, the enzymes from *Rhizomucor pusillus* and *Acremonium alcalophilum* appeared to be the best candidates with the highest  $T_m$  (68°C and above) at the two pH. However, *Rhizomucor pusillus* (MN603103) had low activity on peptidoglycan from *L. johnsonii* (Table 3) and was not selected. TzMur, *Zopfiella sp. t180-6* and *Ascobolus stictoides* had  $T_m$  above 60°C at both pH 3 and 5. The melting temperature of AaMur as a function of pH using three different buffers is shown in Table 5, establishing that it retained its stability over a range of pH.

On the basis of the screening assays (section 2.1), thermostability at pH 3–5 (section 2.2.1), expressibility in a suitable host and general manufacturability, the enzymes from *Acremonium alcalophilum* and *Trichobolus zukaii*, AaMur and TzMur, were selected as having appropriate properties and were actively pursued for further investigation.



**Fig 2. Gastric stability (% residual activity using the OD-drop assay) of the screened muramidases.** AaMur is coloured red and TzMur is coloured yellow. The horizontal line is at 90% survival.

<https://doi.org/10.1371/journal.pone.0248190.g002>

**Table 4. The melting points of a subset of the GH25 enzymes determined by nano-differential scanning fluorimetry.**

Organism	NCBI ID	T <sub>m</sub> (°C)	
		pH 3.0	pH 5.0
<i>Trichobolus zukalii</i> (TzMur)	MN603102	63.9	66.6
<i>Rhizomucor pusillus</i>	MN603103	76.0	73.9
<i>Poronia punctata</i>	MN603104	55.7	53.8
<i>Poronia punctata</i>	MN603105	56.2	54.5
<i>Zopfiella</i> sp. t180-6	MN603106	70.2	62.9
<i>Aspergillus deflectus</i>	MN603107	52.5	64.2
<i>Ascobolus stictoides</i>	MN603147	64.1	64.2
<i>Acremonium alcalophilum</i> (AaMur)	MN603156	69.5	68.1

<https://doi.org/10.1371/journal.pone.0248190.t004>

**3.2.2. Activity as a function of pH.** The pH optimum for AaMur and TzMur was determined using the OD-drop assay and the reducing ends assay, both with *M. lysodeikticus* peptidoglycan as substrate. For both muramidases the optimum was around pH 4, independent of assay. The pH-profiles of AaMur and TzMur using the reducing ends assay is shown in Fig 3.

The optimum is at pH 4.0, but the activity profiles are quite broad, especially for AaMur. This is in the same range as for GH22 lysozymes from ruminants [33] and the stinkbird [13], while HEWL has its optimum at higher pH (6–7). However, the peptidoglycan molecule is a charged substrate with its own pI and since peptidoglycan varies dependent on species the resulting pH optimum will vary. The broad pH-profile favours AaMur over TzMur.

### 3.3. Crystal structures and sequence comparisons

The sequences of the three fungal muramidases with known structures (AaMur, TzMur and the previously published enzyme from *A. fumigatus* (AfMur)) are between 58 and 63% identical, with the two catalytic residues (Asp95 and Glu97) located in the region corresponding to the first half of the (β $\alpha$ )<sub>5</sub> (β)<sub>3</sub>-barrel (discussed below). An alignment of the three sequences is shown in Fig 4.

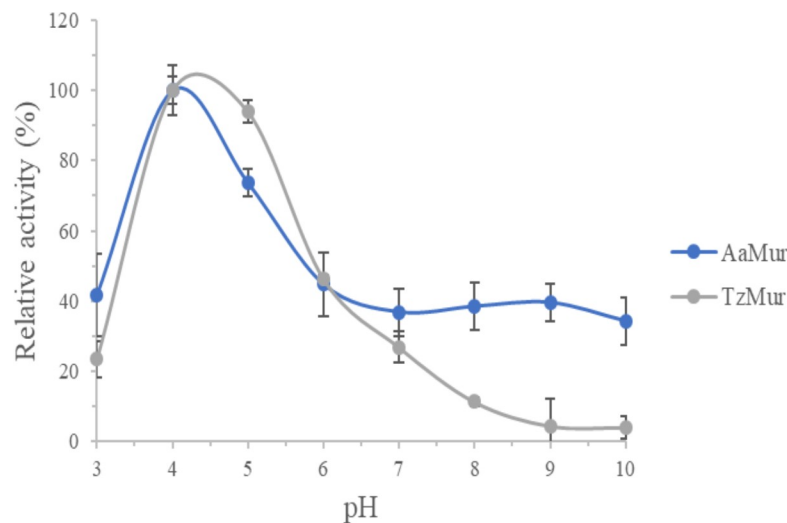
**3.3.1. Acremonium alcalophilum.** For AaMur, there was a single molecule in the asymmetric unit and the whole chain was modelled, with only the terminal residues Arg1 and Asp208 being rather poorly defined. The catalytic residues in the conserved GH25 DXE motif are Asp95 and Glu97. The high resolution of the structure is exemplified by the density shown in Fig 5. The density is typical for such a high-resolution structure showing essentially resolved carbon, oxygen and nitrogen atoms, with many of the hydrogen atoms seen in the difference density.

**3.3.2. Trichobolus zukalii.** For TzMur, there were two independent protein molecules in the asymmetric unit, and the catalytic residues are Asp95 and Glu97. There are sulphate molecules from the crystallisation medium—one in subunit A and two in B. There are four glycerol molecules bound in each chain, introduced when adding the cryoprotectant. Three of these (numbered 301–303) lie in or close to the substrate-binding site, with the fourth one at the

**Table 5. Melting temperatures of AaMur by DSC in three different buffers.**

Buffer	T <sub>m</sub> (°C)
50 mM Na-acetate, pH 4.5	71.2
50 mM Na-acetate, pH 5.5	67.3
50 mM MES (2-(N-morpholino)ethanesulfonic acid), pH 6.5	65.8

<https://doi.org/10.1371/journal.pone.0248190.t005>

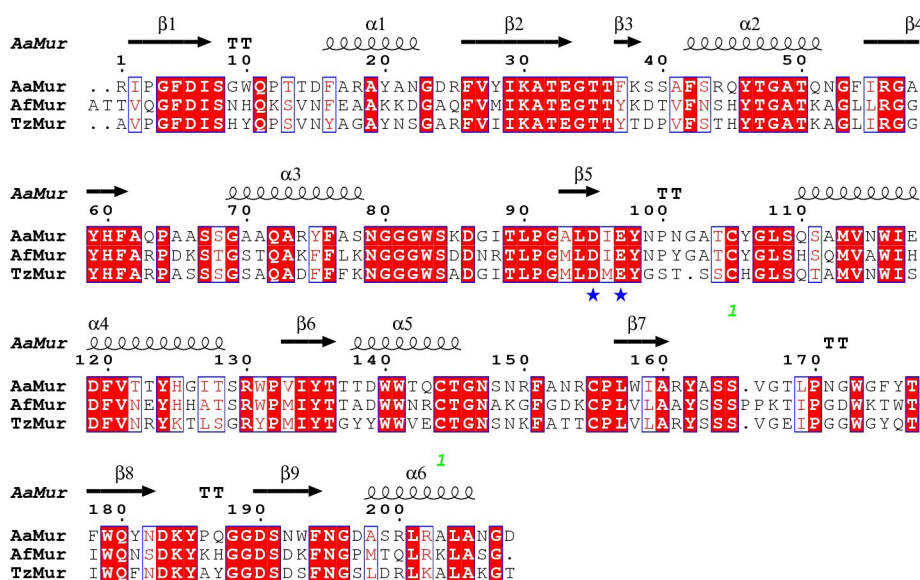


**Fig 3. Activity profiles (activity in % relative to maximum for each muramidase) for AaMur and TzMur determined with the reducing ends assay versus pH.**

<https://doi.org/10.1371/journal.pone.0248190.g003>

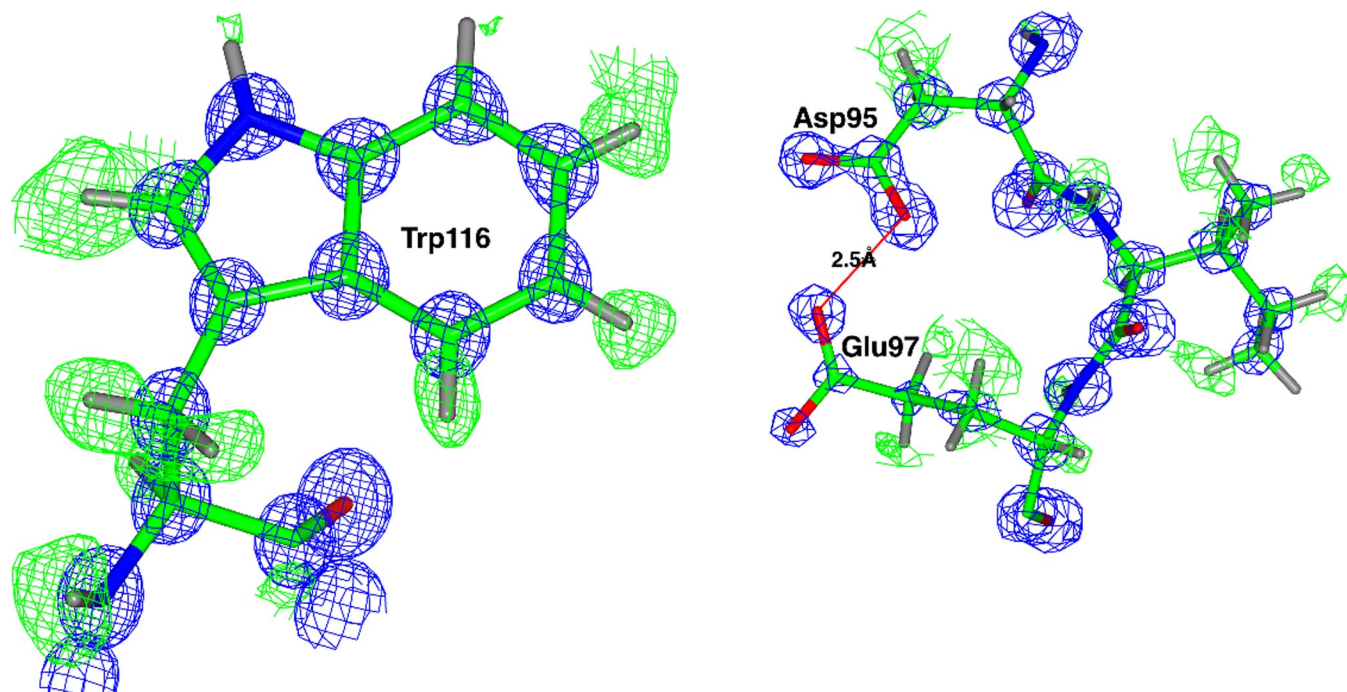
opposite side of the molecule. There is some residual difference density in the active site not good enough to be described as a ligand, the situation being complicated because the final crystals were obtained from the re-dissolved drops collected from other trays due to shortage of material. This density is described as water.

Both proteins have the expected GH25-specific  $(\beta\alpha)_5(\beta)_3$  fold with the active DXE motif located in the N-terminal half of the barrel (Fig 6). As mentioned before, this distorted, GH25—



**Fig 4. Alignment of the sequences of the three fungal enzymes for which structures are now available created with ESPrnt 3.0 [46].** Conserved residues are highlighted in red, conserved changes are in red font. The secondary structure of AaMur is shown above the top sequence, the catalytic residues (Asp95 and Glu97) are marked with a blue \* and the position of the intramolecular disulfide bridge is indicated with an orange \*. While both AaMur and TzMur have putative N-glycosylation sites (NRC for AaMur and NGS for TzMur), none of them were glycosylated at these sites in the structures. The pI of both AaMur and TzMur is 8.4.

<https://doi.org/10.1371/journal.pone.0248190.g004>



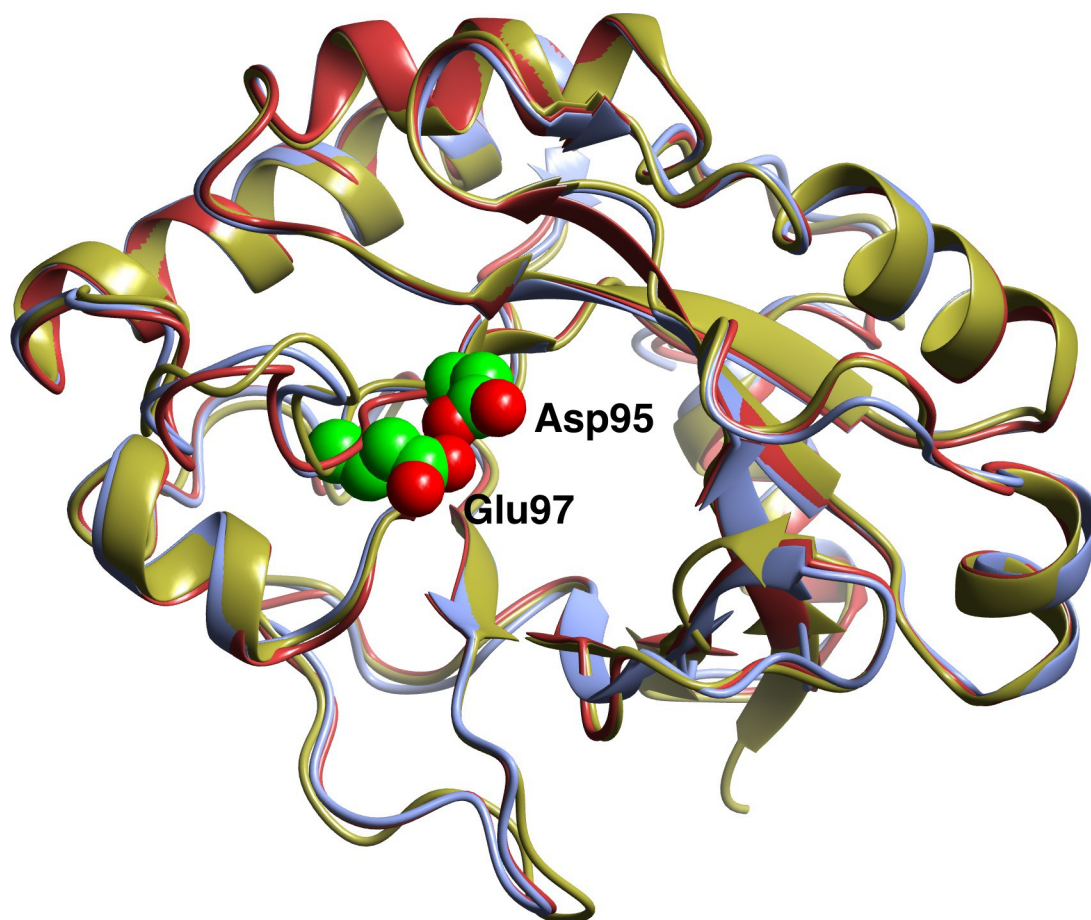
**Fig 5. The electron density of the *AaMur* structure.** With the REFMAC maximum likelihood weighted map contoured at  $3\sigma$  shown in blue, with the difference map contoured at  $1.5\sigma$  in green (positive) and red (negative), using phases calculated from the final model without the riding H-atoms. (a) The density for residue Trp116 and (b) for residues 95–97 including the Asp97 and Glu97 residues important for catalysis. A strong H-bond is shown between the catalytic acid Asp95 and its conserved supporting residue Glu97. The high quality of the structure at  $0.78\text{\AA}$  is evident from the weighted map and in the difference map there are positive density peaks for a good number of the hydrogen atoms.

<https://doi.org/10.1371/journal.pone.0248190.g005>

specific  $\beta\alpha$  fold was first described for the structure of “Cellosyl”—a muramidase from *Streptomyces coelicolor*, where the last three  $\beta$ -strands are connected by loops without any helices, and the final  $\beta 8$  strand is in an unusual antiparallel orientation. The first half of the barrel, where the active site residues are located, is a classical barrel which is consistent with the idea that the initial ancient fold was a half-barrel [47] which became an eight stranded barrel by gene duplication, with more sequence conservation in the half that contains the catalytic residue and less sequence (and as seen here structure) conservation in the other half which is responsible for binding specific targets [48]. It is proposed that, as previously suggested for other GH25 muramidases, that Asp95 acts as an acid donating a proton to the glycosidic oxygen of the substrate, with the N-acetyl group of the substrate rather than a second protein carboxylate acting as the enzymatic nucleophile to stabilise the oxocarbenium ion-like transition state. This mechanism is also found in inter alia the chitobias from family GH20 such as that from *Serratia marcescens* [49].

### 3.4. Comparison to known GH25 family structures—active site

As stated in the introduction, there are several GH25 structures already in the PDB—a representative set composed of a single catalytic domain is superposed in Fig 7A. Several GH25 family members have the catalytic domain as part of a much larger structure, Fig 7B. Details of these structures are available from the Cazy database (<http://www.cazy.org/GH25.html>) which currently reports structures for six bacterial, one fungal (*Aspergillus fumigatus*) and three viral (phage) GH25 enzymes. Structure comparisons for the structures reported here not surprisingly show the highest similarity to the *Aspergillus fumigatus* enzyme. The structures for these three fungal GH25s are highly conserved, with the rms difference compared to *AaMur* being



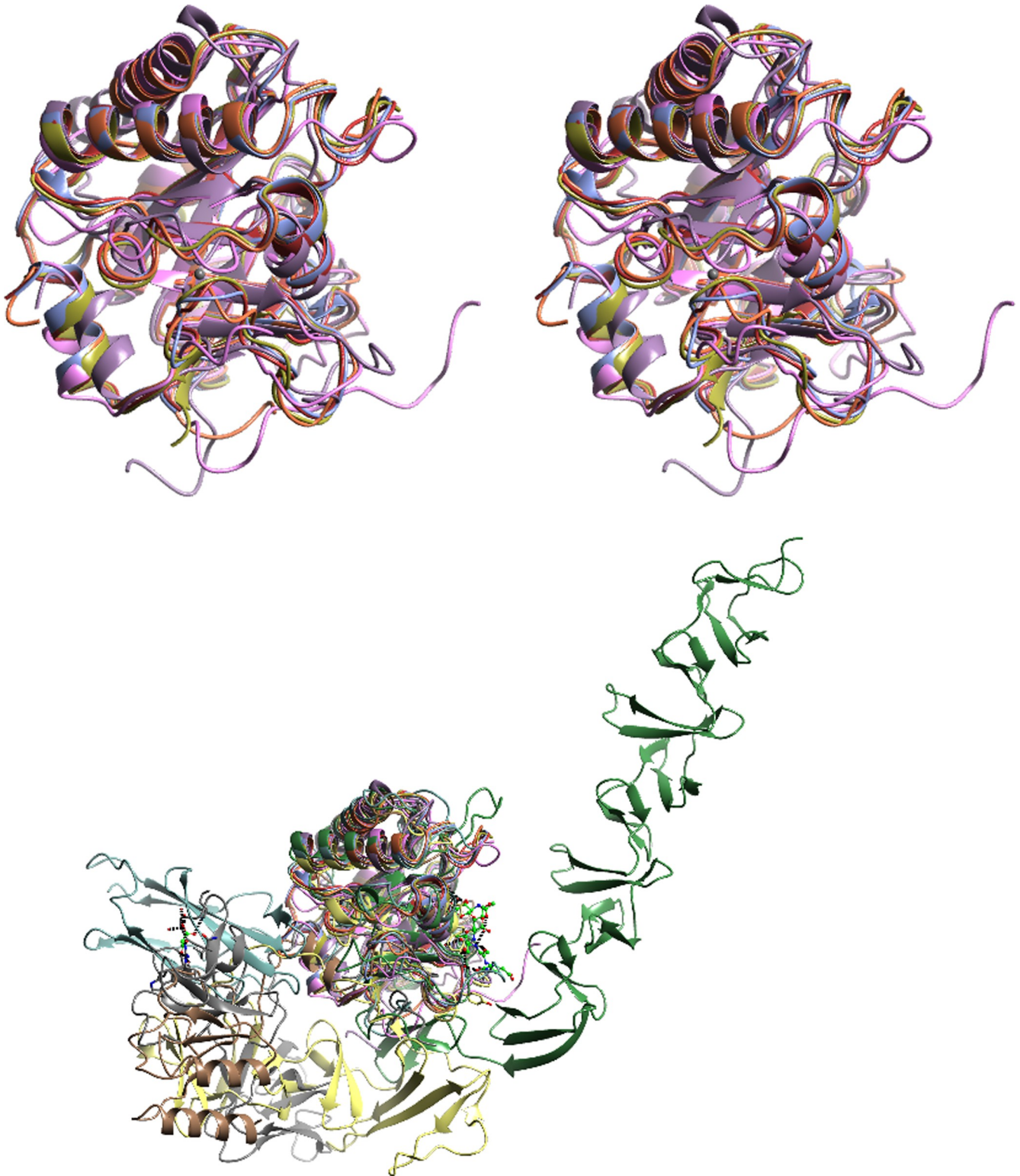
**Fig 6. Ribbon diagram showing the superimposed folds of GH25 muramidases.** *AaMur* is in ice blue, *TzMur* (Chain A) in brown) and *AfMur* (2X8R, Chain A) in gold. The two catalytic residues for *AaMur* are shown as spheres—these correspond to Asp105 and Glu107 in 2X8R. The structures were superposed using the SSM option in CCP4mg.

<https://doi.org/10.1371/journal.pone.0248190.g006>

0.57 Å over 207 equivalent C $\alpha$  atoms for *TzMur* and 1.07 Å over 204 C $\alpha$  atoms for the *Aspergillus fumigatus* enzyme.

Soaking experiments with the aim of getting a ligand complex had previously been made in the course of the structure solution of *AfMur* [30]. The first attempt involved soaking a chito-triothiazoline dithioamide inhibitor into both crystal forms of the wild type enzyme. This proved unsuccessful, data were collected but no ligand bound. The next attempt used inactive mutants of *AfMur* (E100A and D98A) which were soaked with peptidoglycan analogues. In both experiments, crystals were obtained and data collected, but no ligand was seen in the resulting structures. In the present project we tried with supernatants (the soluble part) of peptidoglycan (which is insoluble) treated with *AaMur*, i.e. a product solution. The peptidoglycans used in these experiments were from two different *Lactobacilli* where *AaMur* has high activity (as seen with a reducing sugar assay). A few microliters were added to a crystal in mother liquor. The hydrolysed peptidoglycan was in a ca. 35 mM citrate/120 mM phosphate buffer pH 6.0. Data were collected from the crystals, but no ligand could be seen in the density maps. The reason why no ligand binding was observed remains unclear: as all these experiments were unsuccessful, the details are not included here.

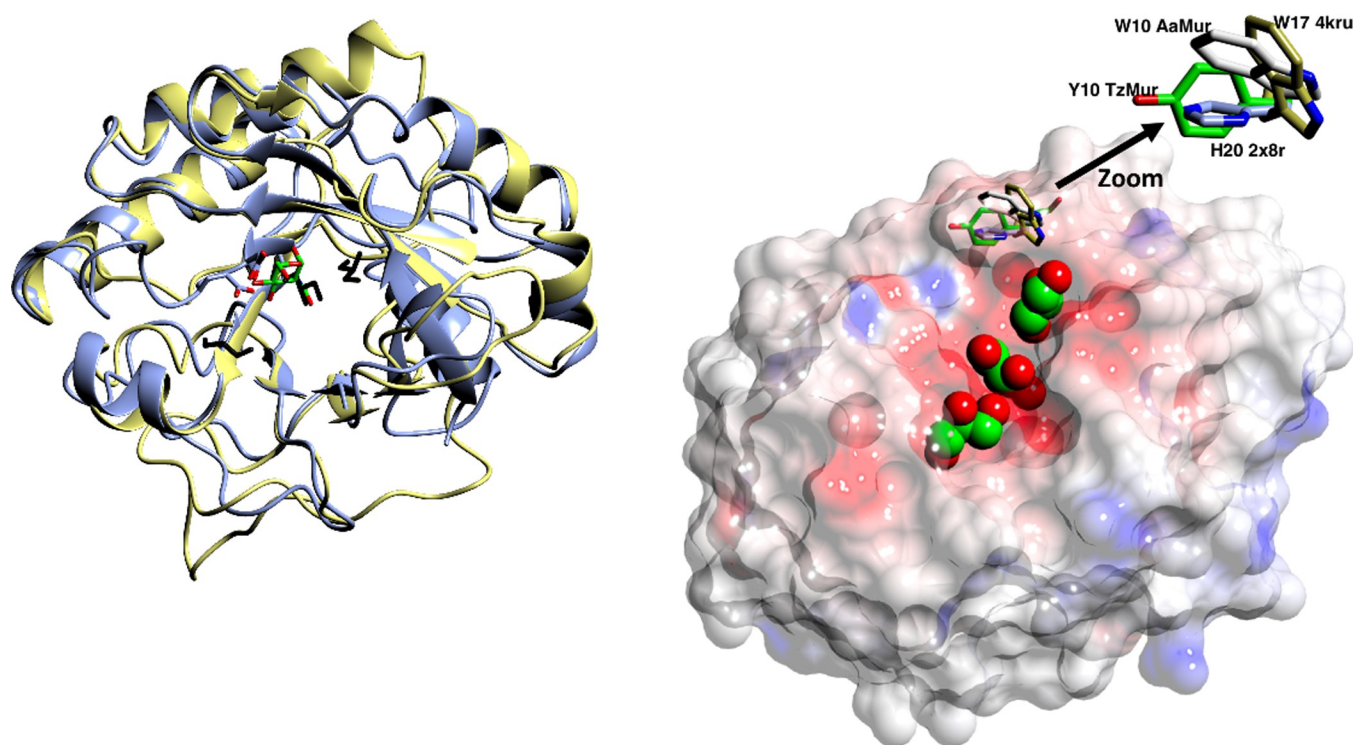
Three of the GH25 structures have ligands bound, and, while we have not succeeded in obtaining a ligand complex, the structure of *TzMur* has four glycerol molecules from the



**Fig 7. Structure comparisons.** (a) Stereo view of a superposition of a representative set of GH25 enzymes (*AaMur*, *TzMur* and PDB codes 2X8R, 1JFX, 2WAG and 4JZ5) with a single catalytic domain. The folds are seen to be highly conserved. (b) Superposition of the same enzymes with a set containing additional domains (PDB codes: 4KRT, 5JIP, 5A6S, 2IXU and 2WWD).

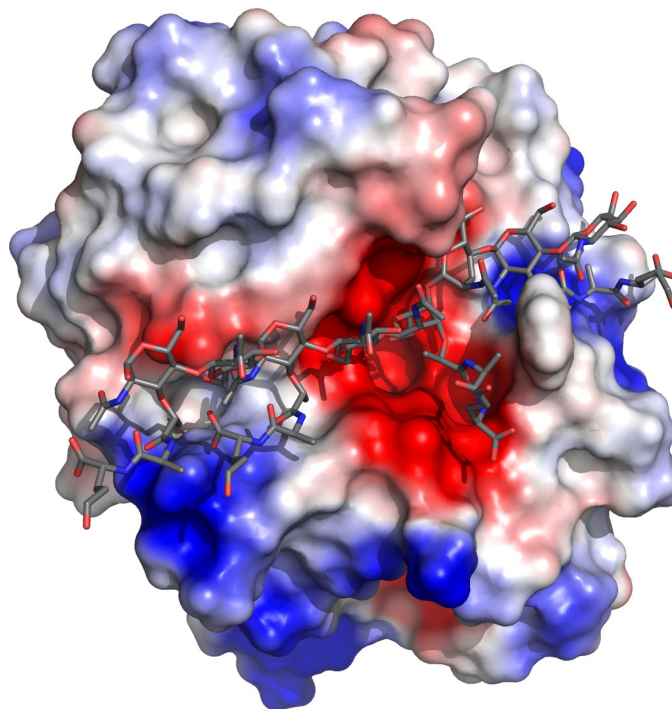
<https://doi.org/10.1371/journal.pone.0248190.g007>

cryoprotectant, three of which are in the ligand binding site. One glycerol superimposes quite well on part of the NDG (2-(acetylamino)-2-deoxy-a-d-glucopyranose) ligand from the catalytic domain of the endolysin from *Clostridium perfringens* phage phiSM101 (PDB: 4KRU), both are close to the catalytic residues D95 and E97 (D101 and E103 in 4KRU) (Fig 8A). While most of the surrounding side chains from the binding sites superimpose very well, Tyr10 of TzMur and the corresponding aromatic residues from the other superimposed structures all have different conformations, indicating a high flexibility of the entrance to the binding site, which might facilitate optimal positioning of peptidoglycan for processing. The importance of these residues for target recognition had been pointed out for Cpl-1 [50] and endolysin from phage phiSM101 [24], where they were in different conformations depending on whether or not the active site contained a ligand (Fig 8B). While the longer ligands from *Streptococcus* phage Cp-1 do not enter the binding pocket, another of the glycerols lies very close to the O6 of the NAGs seen in 2J8G and 2IXU, indicating a potential location of another part of peptidoglycan in TzMur and most probably other fungal muramidases. We finally placed a ligand into the binding cleft based on the structure of the modular autolysin LytC from *Streptococcus pneumoniae* in complex with a pneumococcal peptidoglycan fragment PDB 2WWD, Fig 9. This was achieved by simply superimposing the two sets of coordinates using SSM [51] and did not involve further molecular modelling or docking. As expected, the ligand chain fits beautifully into the enzyme.



**Fig 8.** (a) Superposition of TzMur (ice blue) on 4KRU (yellow), showing one of glycerols (black) superimposing on part of NDG (green) bound in the catalytic domain of the endolysin from *Clostridium perfringens* phage phiSM101 (4KRU), both in the vicinity of active site D and E. The other two glycerols most likely indicate the positions where peptidoglycan would be in a complex. (b) Surface representation of TzMur with the binding site indicated with glycerol molecules. The aromatic residues corresponding to Tyr10 of TzMur in superimposed structures of AaMur, 2X8R and 4KRU all have different conformations, with flexibility at this location potentially facilitating optimal positioning of peptidoglycan for processing. The aromatic residues are shown as cylinders, green for TzMur, yellow for AaMur, ice blue for 2X8R and coral for 4KRU. Glycerols from TzMur are shown as spheres, they indicate the position of binding pocket.

<https://doi.org/10.1371/journal.pone.0248190.g008>



**Fig 9. Model of ligand binding by AaMur.** The surface of AaMur is shown. The ligand model was created by superposition of the AaMur structure and the 2WWD template to position the first sugar of the substrate. Three additional sugars were then placed using Pymol with the dihedrals adjusted to remove clashes as far as possible, while maintaining the coordinates of the substrate fragment resolved in 2WWD.

<https://doi.org/10.1371/journal.pone.0248190.g009>

## 4. Conclusions

We have cloned, expressed and purified a large number of new fungal GH25 muramidases and deposited the sequences for these enzymes in public databases. In the screening of these new enzymes we used the classical “lysozyme” OD-drop assay with *M. lysodeikticus* cells. This assay was also the basis in the gastric stability test. Very little comparative activity data was found for GH25 muramidases. As mentioned before, out of more than 10,000 sequences only 31 are listed as “characterized” in the CAZy-database. We found only four papers on GH25 enzymes that use variations of the OD-drop assay in their characterization [27,52–54]. We have also employed the reducing ends assay to monitor the solubilization of peptidoglycan by the muramidases. The assay can be performed in microtiter plates and the conditions (e.g. muramidase and substrate concentration and pH) can be varied. We believe this is the first time this method has been used to study GH25 muramidase and also on peptidoglycan in general.

The screening of muramidases from 47 fungi led to the selection of AaMur, the enzyme from *Acremonium alcalophilum* JCM 736, as that which had the optimal properties (gastric stable, moderate activity on peptidoglycan from two bacteria and good thermostability) and has resulted in a successful commercial product (Balancius<sup>TM</sup> from DSM nutritional products, Kaiseraugst, Switzerland) that gives improved utilization of feed ingredients [16,17,19]. The crystal structures of AaMur and its close homologue TzMur have been determined thus increasing the number of structurally characterised fungal GH25 muramidases from one to three; the structures of fungal muramidases are compared to other GH25 family members. The new information presented here is important for future improvement of the role of these muramidases as feed additives, as well as for other potential applications.

While it is possible to relate features of the structure to the catalytic mechanism and substrate specificity, it remains challenging to directly relate structural features to such global properties as gastric stable, moderate activity on bacterial peptidoglycan and good thermostability and to predict with confidence how these properties can be enhanced. This would be a requirement of intelligent structure-based design of an enzyme with such enhanced properties. An alternative approach would be to carry out site saturation mutagenesis on the *A. alcalophilum* enzyme to this end. This would require a simple and rapid, probably plate based, screening for the targeted properties. This could probably be achieved for the enzyme activity at application temperature and perhaps for the temperature stability itself. Selected variants could then be individually assayed for their gastric stability and more complex properties.

The patent application “Polypeptides having lysozyme activity, polynucleotides encoding same and uses and compositions thereof” (WO 2018/113745) was based on the work described in this paper.

## Supporting information

**S1 Text. Cloning, expression, purification and activity determination.**  
(DOCX)

**S1 File.**  
(PDF)

**S2 File.**  
(PDF)

## Acknowledgments

We thank Diamond Light Source for access to beamlines I24 (proposal number mx-13587) and I04 (proposal number mx-7864) that contributed to the results presented here. The authors thank Sam Hart for assistance during data collection and Dr. Roland Alexander Pache for making Fig 9.

## Author Contributions

**Conceptualization:** Lars K. Skov, Kirk M. Schnorr, Mikkel Klausen, Keith S. Wilson.

**Data curation:** Olga V. Moroz.

**Formal analysis:** Olga V. Moroz, Edward Taylor, Lars K. Skov, Kirk M. Schnorr, Mikkel Klausen, Marianne T. Cohn, Esben G. W. Schmidt, Søren Nymand-Grarup.

**Investigation:** Olga V. Moroz, Elena Blagova, Edward Taylor, Johan P. Turkenburg, Lars K. Skov, Garry P. Gippert, Li Ming, Liu Ye, Mikkel Klausen, Marianne T. Cohn, Keith S. Wilson.

**Methodology:** Lars K. Skov, Li Ming, Liu Ye, Mikkel Klausen, Marianne T. Cohn, Esben G. W. Schmidt, Søren Nymand-Grarup, Keith S. Wilson.

**Project administration:** Lars K. Skov, Gideon J. Davies, Keith S. Wilson.

**Software:** Garry P. Gippert.

**Supervision:** Lars K. Skov.

**Validation:** Olga V. Moroz.

**Visualization:** Garry P. Gippert.

**Writing – original draft:** Olga V. Moroz, Lars K. Skov, Keith S. Wilson.

**Writing – review & editing:** Olga V. Moroz, Edward Taylor, Lars K. Skov, Gideon J. Davies, Keith S. Wilson.

## References

1. Fleming A. On a remarkable bacteriolytic element found in tissues and secretions. *P R Soc Lond B-Conta.* 1922; 93(653):306–17. <https://doi.org/10.1098/rspb.1922.0023> PubMed PMID: WOS:000200332800001.
2. Lombard V, Ramulu HG, Drula E, Coutinho PM, Henrissat B. The carbohydrate-active enzymes database (CAZy) in 2013. *Nucleic Acids Res.* 2014; 42(D1):D490–D5. <https://doi.org/10.1093/nar/gkt1178> PubMed PMID: WOS:000331139800073. PMID: 24270786
3. Consortium CAZypedia. Ten years of CAZypedia: a living encyclopedia of carbohydrate-active enzymes. *Glycobiology.* 2018; 28(1):3–8. Epub 2017/10/19. <https://doi.org/10.1093/glycob/cwx089> PMID: 29040563.
4. Report of the Commission on Enzymes of the International Union of Biochemistry. *Nutr Rev.* 1962; 20(8):255–6. PubMed PMID: WOS:A1962WE42200017. PMID: 14458564
5. Felch JW, Inagami T, Hash JH. N,O-Diacetylmuramidase of *Chalaropsis* Species. 5. Complete Amino-Acid Sequence. *J Biol Chem.* 1975; 250(10):3713–20. PubMed PMID: WOS:A1975AD05500023. PMID: 1168638
6. Hash JH, Rothlauf MV. N O-Diacetylmuramidase of *Chalaropsis* Species. I. Purification and Crystallization. *J Biol Chem.* 1967; 242(23):5586–8. PubMed PMID: WOS:A1967A384800018. PMID: 12325376
7. Rau A, Hogg T, Marquardt R, Hilgenfeld R. A new lysozyme fold—Crystal structure of the muramidase from *Streptomyces coelicolor* at 1.65 angstrom resolution. *J Biol Chem.* 2001; 276(34):31994–9. <https://doi.org/10.1074/jbc.M102591200> PubMed PMID: WOS:000170613500072. PMID: 11427528
8. Vollmer W, Joris B, Charlier P, Foster S. Bacterial peptidoglycan (murein) hydrolases. *Fems Microbiol Rev.* 2008; 32(2):259–86. <https://doi.org/10.1111/j.1574-6976.2007.00099.x> PubMed PMID: WOS:000253252800006. PMID: 18266855
9. Metcalf JA, Funkhouser-Jones LJ, Brileya K, Reysenbach AL, Bordenstein SR. Antibacterial gene transfer across the tree of life. *Elife.* 2014;3. doi: ARTN e0426610.7554/eLife.04266. PubMed PMID: WOS:000345641200001. <https://doi.org/10.7554/eLife.04266> PMID: 25422936
10. Kunzler M. Hitting the Sweet Spot: Glycans as Targets of Fungal Defense Effector Proteins. *Molecules.* 2015; 20(5):8144–67. <https://doi.org/10.3390/molecules20058144> PubMed PMID: WOS:000357157600043. PMID: 25955890
11. de Ruyter PGGA, Kuipers OP, Meijer WC, deVos WM. Food-grade controlled lysis of *Lactococcus lactis* for accelerated cheese ripening. *Nat Biotechnol.* 1997; 15(10):976–9. <https://doi.org/10.1038/nbt1097-976> PubMed PMID: WOS:A1997XZ28500027. PMID: 9335048
12. Pierce JJ, Turner C, KeshavarzMoore E, Dunnill P. Factors determining more efficient large-scale release of a periplasmic enzyme from *E-coli* using lysozyme. *J Biotechnol.* 1997; 58(1):1–11. [https://doi.org/10.1016/s0168-1656\(97\)00116-8](https://doi.org/10.1016/s0168-1656(97)00116-8) PubMed PMID: WOS:A1997XZ12900001. PMID: 9335174
13. Taylor EJ, Skjot M, Skov LK, Klausen M, De Maria L, Gippert GP, et al. The C-Type Lysozyme from the upper Gastrointestinal Tract of *Opisthocomus hoatzin*, the Stinkbird. *Int J Mol Sci.* 2019; 20(22). Epub 2019/11/09. <https://doi.org/10.3390/ijms20225531> PMID: 31698762; PubMed Central PMCID: PMC6887759.
14. Okada G, Nimura Y, Sakata T. *Acremonium alcalophilum*, a new alkalophilic cellulolytic hyphomycete. *Transactions of the Mycological Society of Japan.* 1993; 34:171–85.
15. Lichtenberg J, Perez Calvo E, Madsen K, Ostergaard Lund T, Kramer Birkved F, van Cauwenberghe S, et al. Safety evaluation of a novel muramidase for feed application. *Regul Toxicol Pharmacol.* 2017; 89:57–69. Epub 2017/07/20. <https://doi.org/10.1016/j.yrtph.2017.07.014> PMID: 28720348.
16. Goodarzi Boroojeni F, Manner K, Rieger J, Perez Calvo E, Zentek J. Evaluation of a microbial muramidase supplementation on growth performance, apparent ileal digestibility, and intestinal histology of broiler chickens. *Poult Sci.* 2019; 98(5):2080–6. Epub 2018/12/20. <https://doi.org/10.3382/ps/pey556> PMID: 30566631.
17. Sais M, Barroeta AC, Lopez-Colomo P, Nofrarias M, Majo N, Lopez-Ulibarri R, et al. Evaluation of dietary supplementation of a novel microbial muramidase on gastrointestinal functionality and growth performance in broiler chickens. *Poult Sci.* 2019. Epub 2019/08/11. <https://doi.org/10.3382/ps/pez466> PMID: 31399737.

18. Rychen G, Aquilina G, Azimonti G, Bampidis V, Bastos MD, Bories G, et al. Safety and efficacy of muramidase from *Trichoderma reesei* DSM 32338 as a feed additive for chickens for fattening and minor poultry species. *Efsa J.* 2018; 16(7). doi: ARTN 534210.2903/j.efsa.2018.5342. PubMed PMID: WOS:000441351400027. <https://doi.org/10.2903/j.efsa.2018.5342> PMID: 32625978
19. Sais M, Barroeta AC, Lopez-Colom P, Nofrarias M, Majo N, Lopez-Ulibarri R, et al. Evaluation of dietary supplementation of a novel microbial muramidase on gastrointestinal functionality and growth performance in broiler chickens. *Poult Sci.* 2020; 99(1):235–45. Epub 2020/05/18. <https://doi.org/10.3382/ps/pez466> PMID: 32416807.
20. Nagano N, Orengo CA, Thornton JM. One fold with many functions: The evolutionary relationships between TIM barrel families based on their sequences, structures and functions. *J Mol Biol.* 2002; 321(5):741–65. PubMed PMID: ISI:000177872400001. [https://doi.org/10.1016/S0022-2836\(02\)00649-6](https://doi.org/10.1016/S0022-2836(02)00649-6) PMID: 12206759
21. Banner DW, Bloomer AC, Petsko GA, Phillips DC, Pogson CI, Wilson IA, et al. Structure of Chicken Muscle Triose Phosphate Isomerase Determined Crystallographically at 2.5 Å Resolution Using Amino-Acid Sequence Data. *Nature.* 1975; 255(5510):609–14. <https://doi.org/10.1038/255609a0> PubMed PMID: WOS:A1975AF15900017. PMID: 1134550
22. Hermoso JA, Monterroso B, Albert A, Galan B, Ahrazem O, Garcia P, et al. Structural basis for selective recognition of pneumococcal cell wall by modular endolysin from phage Cp-1. *Structure.* 2003; 11(10):1239–49. <https://doi.org/10.1016/j.str.2003.09.005> PubMed PMID: WOS:000185758500011. PMID: 14527392
23. Perez-Dorado I, Campillo NE, Monterroso B, Hesek D, Lee M, Paez JA, et al. Elucidation of the molecular recognition of bacterial cell wall by modular pneumococcal phage endolysin CPL-1. *J Biol Chem.* 2007; 282(34):24990–9. Epub 2007/06/22. <https://doi.org/10.1074/jbc.M704317200> PMID: 17581815.
24. Tamai E, Yoshida H, Sekiya H, Nariya H, Miyata S, Okabe A, et al. X-ray structure of a novel endolysin encoded by episomal phage phiSM101 of *Clostridium perfringens*. *Mol Microbiol.* 2014; 92(2):326–37. Epub 2014/03/29. <https://doi.org/10.1111/mmi.12559> PMID: 24674022.
25. Martinez-Fleites C, Korczynska JE, Davies GJ, Cope MJ, Turkenburg JP, Taylor EJ. The crystal structure of a family GH25 lysozyme from *Bacillus anthracis* implies a neighboring-group catalytic mechanism with retention of anomeric configuration. *Carbohydr Res.* 2009; 344(13):1753–7. <https://doi.org/10.1016/j.carres.2009.06.001> PubMed PMID: WOS:000269991600023. PMID: 19595298
26. Low LY, Yang C, Perego M, Osterman A, Liddington R. Role of net charge on catalytic domain and influence of cell wall binding domain on bactericidal activity, specificity, and host range of phage lysins. *J Biol Chem.* 2011; 286(39):34391–403. Epub 2011/08/06. <https://doi.org/10.1074/jbc.M111.244160> PMID: 21816821; PubMed Central PMCID: PMC3190764.
27. Al-Riyami B, Ustok FI, Stott K, Chirgadze DY, Christie G. The crystal structure of *Clostridium perfringens* SleM, a muramidase involved in cortical hydrolysis during spore germination. *Proteins.* 2016; 84(11):1681–9. Epub 2016/10/21. <https://doi.org/10.1002/prot.25112> PMID: 27488615.
28. Perez-Dorado I, Gonzalez A, Morales M, Sanles R, Striker W, Vollmer W, et al. Insights into pneumococcal fratricide from the crystal structures of the modular killing factor LytC. *Nat Struct Mol Biol.* 2010; 17(5):576–U72. <https://doi.org/10.1038/nsmb.1817> PubMed PMID: WOS:000277330700010. PMID: 20400948
29. Niu S, Luo M, Tang J, Zhou H, Zhang Y, Min X, et al. Structural basis of the novel *S. pneumoniae* virulence factor, GHIP, a glycosyl hydrolase 25 participating in host-cell invasion. *PLoS One.* 2013; 8(7): e68647. Epub 2013/07/23. <https://doi.org/10.1371/journal.pone.0068647> PMID: 23874703; PubMed Central PMCID: PMC3712932.
30. Korczynska JE, Danielsen S, Schagerlof U, Turkenburg JP, Davies GJ, Wilson KS, et al. The structure of a family GH25 lysozyme from *Aspergillus fumigatus*. *Acta Crystallogr F.* 2010; 66:973–7. <https://doi.org/10.1107/S1744309110025601> PubMed PMID: WOS:000281635600001. PMID: 20823508
31. Li M, Klausen M., Schnorr, K.M., Nymand-Grarup, S., Olsen, P.B., Cohn, M.Y., et al. inventor Polypeptides having lysozyme activity, polynucleotides encoding same and uses and compositions thereof patent WO2018113745A1. 2018.
32. Parry RM Jr., Chandan RC, Shahani KM. A Rapid and Sensitive Assay of Muramidase. *Proc Soc Exp Biol Med.* 1965; 119:384–6. Epub 1965/06/01. <https://doi.org/10.3181/00379727-119-30188> PMID: 14328897.
33. Dobson DE, Prager EM, Wilson AC. Stomach lysozymes of ruminants. I. Distribution and catalytic properties. *J Biol Chem.* 1984; 259(18):11607–16. Epub 1984/09/25. PMID: 6432801.
34. Shugar D. The measurement of lysozyme activity and the ultra-violet inactivation of lysozyme. *Biochim Biophys Acta.* 1952; 8(3):302–9. Epub 1952/03/01. [https://doi.org/10.1016/0006-3002\(52\)90045-0](https://doi.org/10.1016/0006-3002(52)90045-0) PMID: 14934741.
35. Winn MD, Ballard CC, Cowtan KD, Dodson EJ, Emsley P, Evans PR, et al. Overview of the CCP4 suite and current developments. *Acta Crystallogr D.* 2011; 67:235–42. <https://doi.org/10.1107/S0907444910045749> PubMed PMID: ISI:000288532800002. PMID: 21460441

36. McNicholas S, Potterton E, Wilson KS, Noble ME. Presenting your structures: the CCP4mg molecular-graphics software. *Acta Crystallogr D Biol Crystallogr*. 2011; 67(Pt 4):386–94. Epub 2011/04/05. <https://doi.org/10.1107/S0907444911007281> PMID: 21460457; PubMed Central PMCID: PMC3069754.
37. Chen VB, Arendall WB 3rd, Headd JJ, Keedy DA, Immormino RM, Kapral GJ, et al. MolProbity: all-atom structure validation for macromolecular crystallography. *Acta Crystallogr D Biol Crystallogr*. 2010; 66(Pt 1):12–21. Epub 2010/01/09. <https://doi.org/10.1107/S0907444909042073> PMID: 20057044; PubMed Central PMCID: PMC2803126.
38. Diederichs K, Karplus PA. Improved R-factors for diffraction data analysis in macromolecular crystallography. *Nat Struct Biol*. 1997; 4(4):269–75. Epub 1997/04/01. <https://doi.org/10.1038/nsb0497-269> PMID: 9095194.
39. Kabsch W. Xds. *Acta Crystallogr D Biol Crystallogr*. 2010; 66(Pt 2):125–32. Epub 2010/02/04. <https://doi.org/10.1107/S0907444909047337> PMID: 20124692; PubMed Central PMCID: PMC2815665.
40. Winter G, Lobley CMC, Prince SM. Decision making in xia2. *Acta Crystallogr D*. 2013; 69:1260–73. <https://doi.org/10.1107/S0907444913015308> PubMed PMID: ISI:000320712800009. PMID: 23793152
41. Evans PR, Murshudov GN. How good are my data and what is the resolution? *Acta Crystallogr D*. 2013; 69:1204–14. <https://doi.org/10.1107/S0907444913000061> PubMed PMID: WOS:000320712800003. PMID: 23793146
42. Vagin A, Teplyakov A. Molecular replacement with MOLREP. *Acta Crystallogr D*. 2010; 66:22–5. <https://doi.org/10.1107/S0907444909042589> PubMed PMID: ISI:000273758800004. PMID: 20057045
43. Murshudov GN, Skubak P, Lebedev AA, Pannu NS, Steiner RA, Nicholls RA, et al. REFMAC5 for the refinement of macromolecular crystal structures. *Acta Crystallogr D*. 2011; 67:355–67. <https://doi.org/10.1107/S0907444911001314> PubMed PMID: ISI:000288532800015. PMID: 21460454
44. Emsley P, Cowtan K. Coot: model-building tools for molecular graphics. *Acta Crystallogr*. 2004; D60:2126–32. <https://doi.org/10.1107/S0907444904019158> PMID: 15572765
45. Shapiro SK, Rhodes RA, Sarles WB. Lactobacilli in the intestinal tract of the chicken. *J Bacteriol*. 1949; 58(5):689–94. Epub 1949/11/01. <https://doi.org/10.1128/JB.58.5.689-694.1949> PMID: 15393699; PubMed Central PMCID: PMC385686.
46. Robert X, Gouet P. Deciphering key features in protein structures with the new ENDscript server. *Nucleic Acids Res*. 2014; 42(W1):W320–W4. <https://doi.org/10.1093/nar/gku316> PubMed PMID: WOS:000339715000053. PMID: 24753421
47. Lang D, Thoma R, Henn-Sax M, Sterner R, Wilmanns M. Structural evidence for evolution of the beta/alpha barrel scaffold by gene duplication and fusion. *Science*. 2000; 289(5484):1546–50. Epub 2000/09/01. <https://doi.org/10.1126/science.289.5484.1546> PMID: 10968789.
48. Rhee SG, Suh PG, Ryu SH, Lee SY. Studies of Inositol Phospholipid Specific Phospholipase-C. *Science*. 1989; 244(4904):546–50. <https://doi.org/10.1126/science.2541501> PubMed PMID: WOS: A1989U445000018. PMID: 2541501
49. Tews I, Perrakis A, Oppenheim A, Dauter Z, Wilson KS, Vorgias CE. Bacterial chitinase structure provides insight into catalytic mechanism and the basis of Tay-Sachs disease. *Nat Struct Biol*. 1996; 3(7):638–48. Epub 1996/07/01. <https://doi.org/10.1038/nsb0796-638> PMID: 8673609.
50. Perez-Dorado I, Campillo NE, Monterroso B, Hesek D, Lee M, Paez JA, et al. Elucidation of the molecular recognition of bacterial cell wall by modular pneumococcal phage endolysin CPL-1. *J Biol Chem*. 2007; 282(34):24990–9. <https://doi.org/10.1074/jbc.M704317200> PubMed PMID: WOS:000248933000055. PMID: 17581815
51. Krissinel E, Henrick K. Secondary-structure matching (SSM), a new tool for fast protein structure alignment in three dimensions. *Acta Crystallogr D Biol Crystallogr*. 2004; 60(Pt 12 Pt 1):2256–68. Epub 2004/12/02. <https://doi.org/10.1107/S0907444904026460> PMID: 15572779.
52. Porter CJ, Schuch R, Pelzek AJ, Buckle AM, McGowan S, Wilce MC, et al. The 1.6 Å crystal structure of the catalytic domain of PlyB, a bacteriophage lysin active against *Bacillus anthracis*. *J Mol Biol*. 2007; 366(2):540–50. Epub 2006/12/22. <https://doi.org/10.1016/j.jmb.2006.11.056> PMID: 17182056.
53. Morais S, Cockburn DW, Ben-David Y, Koropatkin NM, Martens EC, Duncan SH, et al. Lysozyme activity of the *Ruminococcus champanellensis* cellulosome. *Environ Microbiol*. 2016; 18(12):5112–22. Epub 2016/08/25. <https://doi.org/10.1111/1462-2920.13501> PMID: 27555215.
54. Romero P, Bartual SG, Schmelcher M, Gluck C, Hermoso JA, Loessner MJ. Structural insights into the binding and catalytic mechanisms of the *Listeria monocytogenes* bacteriophage glycosyl hydrolase PlyP40. *Mol Microbiol*. 2018; 108(2):128–42. Epub 2018/02/07. <https://doi.org/10.1111/mmi.13922> PMID: 29405497.