



Deposited via The University of Sheffield.

White Rose Research Online URL for this paper:

<https://eprints.whiterose.ac.uk/id/eprint/171289/>

Version: Published Version

Book Section:

Pohlmann, A., Back, S.J., Fekete, A. et al. (2021) Recommendations for preclinical renal MRI : a comprehensive open-access protocol collection to improve training, reproducibility, and comparability of studies. In: Pohlmann, A. and Niendorf, T., (eds.) Preclinical MRI of the Kidney: Methods and Protocols. Methods in Molecular Biology (2216). Springer, pp. 3-23. ISBN: 9781071609774. EISSN: 1940-6029.

https://doi.org/10.1007/978-1-0716-0978-1_1

Reuse

This article is distributed under the terms of the Creative Commons Attribution (CC BY) licence. This licence allows you to distribute, remix, tweak, and build upon the work, even commercially, as long as you credit the authors for the original work. More information and the full terms of the licence here:

<https://creativecommons.org/licenses/>

Takedown

If you consider content in White Rose Research Online to be in breach of UK law, please notify us by emailing eprints@whiterose.ac.uk including the URL of the record and the reason for the withdrawal request.

Methods in
Molecular Biology 2216

Springer Protocols



Andreas Pohlmann
Thoralf Niendorf *Editors*

Preclinical MRI of the Kidney

Methods and Protocols



OPEN ACCESS

 Humana Press

METHODS IN MOLECULAR BIOLOGY

Series Editor

John M. Walker

School of Life and Medical Sciences

University of Hertfordshire

Hatfield, Hertfordshire, UK

For further volumes:

<http://www.springer.com/series/7651>

For over 35 years, biological scientists have come to rely on the research protocols and methodologies in the critically acclaimed *Methods in Molecular Biology* series. The series was the first to introduce the step-by-step protocols approach that has become the standard in all biomedical protocol publishing. Each protocol is provided in readily-reproducible step-by-step fashion, opening with an introductory overview, a list of the materials and reagents needed to complete the experiment, and followed by a detailed procedure that is supported with a helpful notes section offering tips and tricks of the trade as well as troubleshooting advice. These hallmark features were introduced by series editor Dr. John Walker and constitute the key ingredient in each and every volume of the *Methods in Molecular Biology* series. Tested and trusted, comprehensive and reliable, all protocols from the series are indexed in PubMed.

Preclinical MRI of the Kidney

Methods and Protocols

Edited by

Andreas Pohlmann and Thoralf Niendorf

*Berlin Ultrahigh Field Facility (B.U.F.F.), Max Delbrück Center for Molecular Medicine (MDC) in the
Helmholtz Association, Berlin, Germany*

Editors

Andreas Pohlmann
Berlin Ultrahigh Field Facility (B.U.F.F.)
Max Delbrück Center for Molecular Medicine
(MDC) in the Helmholtz Association
Berlin, Germany

Thoralf Niendorf
Berlin Ultrahigh Field Facility (B.U.F.F.)
Max Delbrück Center for Molecular Medicine
(MDC) in the Helmholtz Association
Berlin, Germany

ISSN 1064-3745

ISSN 1940-6029 (electronic)

Methods in Molecular Biology

ISBN 978-1-0716-0977-4

ISBN 978-1-0716-0978-1 (eBook)

<https://doi.org/10.1007/978-1-0716-0978-1>

© The Editor(s) (if applicable) and The Author(s) 2021

Open Access This book is licensed under the terms of the Creative Commons Attribution 4.0 International License (<http://creativecommons.org/licenses/by/4.0/>), which permits use, sharing, adaptation, distribution and reproduction in any medium or format, as long as you give appropriate credit to the original author(s) and the source, provide a link to the Creative Commons license and indicate if changes were made.

The images or other third party material in this book are included in the book's Creative Commons license, unless indicated otherwise in a credit line to the material. If material is not included in the book's Creative Commons license and your intended use is not permitted by statutory regulation or exceeds the permitted use, you will need to obtain permission directly from the copyright holder.

The use of general descriptive names, registered names, trademarks, service marks, etc. in this publication does not imply, even in the absence of a specific statement, that such names are exempt from the relevant protective laws and regulations and therefore free for general use.

The publisher, the authors, and the editors are safe to assume that the advice and information in this book are believed to be true and accurate at the date of publication. Neither the publisher nor the authors or the editors give a warranty, expressed or implied, with respect to the material contained herein or for any errors or omissions that may have been made. The publisher remains neutral with regard to jurisdictional claims in published maps and institutional affiliations.

This Humana imprint is published by the registered company Springer Science+Business Media, LLC, part of Springer Nature.

The registered company address is: 1 New York Plaza, New York, NY 10004, U.S.A.

Preface

Preclinical MRI for Renal Health

Despite the fact that we are in an era of increased prevalence, incidence, and recognition of renal diseases, the current options for effective prophylactic and therapeutic regimens for kidney disorders are disappointingly sparse. A major obstacle is the inherent complexity of the pathophysiology in renal disease. Overcoming this requires immediate innovative action across multiple domains and requires new instruments that enable noninvasive diagnostics and monitoring of therapy during renal diseases. The upshot is that this also creates ever-increasing opportunities for discovery.

The development and validation of disruptive diagnostic approaches and strategies for early interception of renal disease and renoprotection can be brought on only with a deeper understanding of the underlying (patho)physiology. This underlines the urgent quest for emergent biomedical imaging techniques, customized for probing all stages of renal diseases. While many renal diseases involve defects at the molecular and cellular levels, these manifest themselves at the scale of the organ system. The unique function of biomedical imaging is to monitor all these levels simultaneously, connecting the view of biologists with that of clinicians *in vivo*. This asks for approaches that are noninvasive, ubiquitous, and applicable both preclinically and clinically—this is the forte of magnetic resonance imaging (MRI). An increasing body of evidence indicates that MRI biomarkers have a high potential for complementing and improving acute and chronic renal disease management. MRI is a versatile technique, and a host of functional MRI methods have emerged that are sensitive to pathophysiological changes associated with renal hemodynamics, oxygenation, fibrosis, inflammation, and microstructure. To better connect MR imaging markers with (patho)-physiology, MRI needs to be benchmarked and calibrated with integrative physiological measurements which include the use of quantitative invasive probes. Due to the enormous technical challenges involved, renal MRI biomarkers remain woefully underused in preclinical research and in clinical practice. These scientific and technical issues constitute a substantial barrier *en route* to the standardization and broad application of renal MRI.

The purpose of this book is to overcome these roadblocks by promoting an open-access collection of protocols and comprehensive recommendations for preclinical renal MRI, to be employed in translational research. The book provides answers to the common questions regarding how renal MRI technologies emerging from the research community can be translated into open-access, ready-to-go toolboxes that can be applied to human patients in a way that is standardized, highly reproducible, and harmonized across centers, with the goal of combating renal disease by substantially slowing its progression and preventing kidney injury.

With this “*from the community, to the community*” approach, the book is designed to enhance training in renal MRI sciences, to improve the reproducibility of renal imaging research, and to boost the comparability of renal MRI studies. With this mission, the book promotes an entirely unique opportunity for developing advanced *in vivo* renal phenotyping, diagnostic imaging, and therapy guidance as a link to stratified medicine. The clinical implications of this relate to a broad spectrum of physiology, nephrology, radiology,

cardiology, and other associated fields of basic science and clinical research targeting renal and cardiorenal diseases.

The chapters covered in this book are interdisciplinary in nature and bridge the gaps between physics, physiology, and medicine. The contributions are provided by leading international experts and hands-on scientists and serve as a foundation to substantially boost the development of renal imaging tools, which will increase the efficacy of diagnostics, promote the identification of new therapeutic targets and options, drive explorations into novel renoprotective strategies, and lead to enhanced prophylactic regimens. To meet this goal, the book provides chapters on the fundamental principles, detailed experimental protocols and guidelines for data analysis, to successfully unlock the full potential of renal MRI. At the same time, the book promises to help nurture a new generation of researchers with the high potential needed for the development of next-generation renal imaging technology, by addressing some crucial educational gaps.

The pace of discovery of preclinical MRI is heartening, drawing in new talent and driving the transfer of results into novel preclinical applications and into the clinical arena. The remaining challenges must be faced openly via collaborations between forward-thinking researchers, application scientists, clinicians, and the general readership of this book. These collaborations should be interdisciplinary, inter-institutional, and international, as exemplified and spearheaded by imaging networks. A prominent example of this is the renal imaging initiative PARENCHIMA, a community-driven Action of the COST (European Cooperation in Science and Technology) program of the European Union, which aims to improve the reproducibility and standardization of renal MRI biomarkers. Only because of the truly interdisciplinary nature of this work, and the essential role that having many types of expertise in close interaction has played, we got this far.

This book lives up to this mission by providing a comprehensive overview and guidance on preclinical MRI. It is intended to take this approach to the next level and to put extra weight behind finding a solution to the remaining problems in renal imaging research. With this mission, the reader will learn to make sense of the terrain we currently inhabit and to better interpret the images of the kidney that we produce using sophisticated preclinical MRI and data analysis protocols. Inevitably, there will be breakthroughs and surprises when you place next-generation imaging technologies and this book into the hands of highly creative interdisciplinary teams. However, this will only happen if we recognize that moving into the next generation of renal imaging technology is more than just a matter of buying equipment, installing it, and then trying to operate in "core facilities" where budgetary considerations, and not scientific goals, dominate. The ultimate potential of preclinical renal MRI is far greater; all that is required is the imagination to apply it, following the chapters in this book as a roadmap. We hope that the book will convey the seeds of this vision and inspire you—as it has us—to become pioneers in this amazingly promising area.

With this perspective, we are grateful to all the authors for their outstanding work, passion, dedication, and enthusiasm to drive this assembly of recommendations and open-access protocols on preclinical MRI home. We all succeeded thanks to the sheer power and momentum of interdisciplinary collaboration and teamwork. You made and make the difference. Thank you.

Berlin, Germany

*Thoralf Niendorf
Andreas Pohlmann*

Contents

<i>Preface</i>	<i>v</i>
<i>Contributors</i>	<i>xiii</i>

PART I INTRODUCTION

1 Recommendations for Preclinical Renal MRI: A Comprehensive Open-Access Protocol Collection to Improve Training, Reproducibility, and Comparability of Studies	3
<i>Andreas Pohlmann, Susan J. Back, Andrea Fekete, Iris Friedli, Stefanie Hectors, Neil Peter Jerome, Min-Chi Ku, Dario Livio Longo, Martin Meier, Jason M. Millward, João S. Periquito, Erdmann Seeliger, Suraj D. Serai, Sonia Waiczies, Steven Sourbron, Christoffer Laustsen, and Thoralf Niendorf</i>	

PART II ANIMAL MODELS, PREPARATION, MONITORING, AND PHYSIOLOGICAL INTERVENTIONS

2 Animal Models of Renal Pathophysiology and Disease	27
<i>Adam Hosszu, Tamas Kaucsar, Erdmann Seeliger, and Andrea Fekete</i>	
3 Preparation and Monitoring of Small Animals in Renal MRI	45
<i>Tamas Kaucsar, Adam Hosszu, Erdmann Seeliger, Henning M. Reimann, and Andrea Fekete</i>	
4 Reversible (Patho)Physiologically Relevant Test Interventions: Rationale and Examples	57
<i>Kathleen Cantow, Mechthild Ladwig-Wiegard, Bert Flemming, Andrea Fekete, Adam Hosszu, and Erdmann Seeliger</i>	
5 Preparation of Ex Vivo Rodent Phantoms for Developing, Testing, and Training MR Imaging of the Kidney and Other Organs	75
<i>Jason M. Millward, João S. Periquito, Paula Ramos Delgado, Christian Prinz, Thoralf Niendorf, and Sonia Waiczies</i>	

PART III BASIC CONCEPTS OF MEASUREMENT TECHNIQUES

6 Quantitative Assessment of Renal Perfusion and Oxygenation by Invasive Probes: Basic Concepts	89
<i>Kathleen Cantow, Roger G. Evans, Dirk Grosenick, Thomas Gladytz, Thoralf Niendorf, Bert Flemming, and Erdmann Seeliger</i>	
7 Ultrasound and Photoacoustic Imaging of the Kidney: Basic Concepts and Protocols	109
<i>Sandra Meyer, Dieter Fuchs, and Martin Meier</i>	

8	Hardware Considerations for Preclinical Magnetic Resonance of the Kidney	131
	<i>Paula Ramos Delgado, Ekkehard Küstermann, André Kühne, Jason M. Millward, Thoralf Niendorf, Andreas Pohlmann, and Martin Meier</i>	
9	MRI Mapping of Renal T_1 : Basic Concept	157
	<i>Stefanie J. Hectors, Philippe Garteiser, Sabrina Doblaz, Gwenaël Pagé, Bernard E. Van Beers, John C. Waterton, and Octavia Bane</i>	
10	MRI Mapping of the Blood Oxygenation Sensitive Parameter T_2^* in the Kidney: Basic Concept	171
	<i>Lu-Ping Li, Bradley Hack, Erdmann Seeliger, and Pottumarthi V. Prasad</i>	
11	Renal Diffusion-Weighted Imaging (DWI) for Apparent Diffusion Coefficient (ADC), Intravoxel Incoherent Motion (IVIM), and Diffusion Tensor Imaging (DTI): Basic Concepts	187
	<i>Neil Peter Jerome, Anna Caroli, and Alexandra Ljimini</i>	
12	Dynamic Contrast Enhancement (DCE) MRI–Derived Renal Perfusion and Filtration: Basic Concepts	205
	<i>Michael Pedersen, Pietro Irrera, Walter Dastrù, Frank G. Zöllner, Kevin M. Bennett, Scott C. Beeman, G. Larry Bretthorst, Joel R. Garbow, and Dario Livio Longo</i>	
13	Noninvasive Renal Perfusion Measurement Using Arterial Spin Labeling (ASL) MRI: Basic Concept	229
	<i>Min-Chi Ku, María A. Fernández-Seara, Frank Kober, and Thoralf Niendorf</i>	
14	Renal pH Imaging Using Chemical Exchange Saturation Transfer (CEST) MRI: Basic Concept	241
	<i>Dario Livio Longo, Pietro Irrera, Lorena Consolino, Phillip Zhe Sun, and Michael T. McMahon</i>	
15	Sodium (^{23}Na) MRI of the Kidney: Basic Concept	257
	<i>James T. Grist, Esben Søvsø Hansen, Frank G. Zöllner, and Christoffer Laustsen</i>	
16	Hyperpolarized Carbon (^{13}C) MRI of the Kidneys: Basic Concept	267
	<i>Cornelius von Morze, Galen D. Reed, Zhen J. Wang, Michael A. Obliger, and Christoffer Laustsen</i>	
17	Functional Imaging Using Fluorine (^{19}F) MR Methods: Basic Concepts	279
	<i>Sonia Waiczies, Christian Prinz, Ludger Starke, Jason M. Millward, Paula Ramos Delgado, Jens Rosenberg, Marc Nazaré, Helmar Waiczies, Andreas Pohlmann, and Thoralf Niendorf</i>	
18	MR Elastography of the Abdomen: Basic Concepts	301
	<i>Suraj D. Serai and Meng Yin</i>	
PART IV EXPERIMENTAL PROTOCOLS		
19	Monitoring Renal Hemodynamics and Oxygenation by Invasive Probes: Experimental Protocol	327
	<i>Kathleen Cantow, Mechthild Ladwig-Wiegard, Bert Flemming, Andreas Pohlmann, Thoralf Niendorf, and Erdmann Seeliger</i>	

20	Essential Practical Steps for MRI of the Kidney in Experimental Research	349
	<i>Andreas Pohlmann, João S. Periquito, and Thoralf Niendorf</i>	
21	Assessment of Renal Volume with MRI: Experimental Protocol	369
	<i>Andreas Müller and Martin Meier</i>	
22	Experimental Protocols for MRI Mapping of Renal T_1	383
	<i>Philippe Garteiser, Octavia Bane, Sabrina Doblas, Iris Friedli, Stefanie Hectors, Gwenaël Pagé, Bernard E. Van Beers, and John C. Waterton</i>	
23	Experimental Protocol for MRI Mapping of the Blood Oxygenation-Sensitive Parameters T_2^* and T_2 in the Kidney	403
	<i>Andreas Pohlmann, Kaixuan Zhao, Sean B. Fain, Pottumarthi V. Prasad, and Thoralf Niendorf</i>	
24	Renal MRI Diffusion: Experimental Protocol	419
	<i>João S. Periquito, Martin Meier, Thoralf Niendorf, Andreas Pohlmann, and Neil Peter Jerome</i>	
25	Dynamic Contrast Enhanced (DCE) MRI-Derived Renal Perfusion and Filtration: Experimental Protocol	429
	<i>Pietro Irrera, Lorena Consolino, Walter Dastrù, Michael Pedersen, Frank G. Zöllner, and Dario Livio Longo</i>	
26	Renal Blood Flow Using Arterial Spin Labeling (ASL) MRI: Experimental Protocol and Principles	443
	<i>Kai-Hsiang Chuang, Martin Meier, María A. Fernández-Seara, Frank Kober, and Min-Chi Ku</i>	
27	Renal pH Mapping Using Chemical Exchange Saturation Transfer (CEST) MRI: Experimental Protocol	455
	<i>Kowsalya Devi Pavuluri, Lorena Consolino, Dario Livio Longo, Pietro Irrera, Phillip Zhe Sun, and Michael T. McMahon</i>	
28	Sodium (^{23}Na) MRI of the Kidney: Experimental Protocol	473
	<i>James T. Grist, Esben Søvsø Hansen, Frank G. Zöllner, and Christoffer Laustsen</i>	
29	Hyperpolarized Carbon (^{13}C) MRI of the Kidney: Experimental Protocol	481
	<i>Christoffer Laustsen, Cornelius von Morze, and Galen D. Reed</i>	
30	Fluorine (^{19}F) MRI for Assessing Inflammatory Cells in the Kidney: Experimental Protocol.	495
	<i>Min-Chi Ku, Adrian Schreiber, Paula Ramos Delgado, Philipp Boehm-Sturm, Ralph Kettritz, Thoralf Niendorf, Andreas Pohlmann, and Sonia Waiczies</i>	
31	Fluorine (^{19}F) MRI to Measure Renal Oxygen Tension and Blood Volume: Experimental Protocol	509
	<i>Lingzhi Hu, Hua Pan, and Samuel A. Wickline</i>	
32	MR Elastography of the Abdomen: Experimental Protocols.	519
	<i>Suraj D. Serai and Meng Yin</i>	

PART V PROTOCOLS FOR ADVANCED ANALYSES

33 Subsegmentation of the Kidney in Experimental MR Images Using Morphology-Based Regions-of-Interest or Multiple-Layer Concentric Objects 549
Leili Riazzy, Bastien Milani, João S. Periquito, Kathleen Cantow, Thoralf Niendorf, Menno Pruijm, Erdmann Seeliger, and Andreas Pohlmann

34 Denoising for Improved Parametric MRI of the Kidney: Protocol for Nonlocal Means Filtering 565
Ludger Starke, Karsten Tabelow, Thoralf Niendorf, and Andreas Pohlmann

35 Analysis Protocols for MRI Mapping of Renal T_1 577
Philippe Garteiser, Gwenael Pagé, Sabrina Doblas, Octavia Bane, Stefanie Hectors, Iris Friedli, Bernard E. Van Beers, and John C. Waterton

36 Analysis Protocols for MRI Mapping of the Blood Oxygenation–Sensitive Parameters T_2^* and T_2 in the Kidney 591
João S. Periquito, Ludger Starke, Carlota M. Santos, Andreia C. Freitas, Nuno Loução, Pablo García Polo, Rita G. Nunes, Thoralf Niendorf, and Andreas Pohlmann

37 Analysis of Renal Diffusion-Weighted Imaging (DWI) Using Apparent Diffusion Coefficient (ADC) and Intravoxel Incoherent Motion (IVIM) Models 611
Neil Peter Jerome and João S. Periquito

38 Analysis Protocol for Dynamic Contrast Enhanced (DCE) MRI of Renal Perfusion and Filtration 637
Frank G. Zöllner, Walter Dastrù, Pietro Irrera, Dario Livio Longo, Kevin M. Bennett, Scott C. Beeman, G. Larry Bretthorst, and Joel R. Garbow

39 Quantitative Analysis of Renal Perfusion by Arterial Spin Labeling 655
Kai-Hsiang Chuang, Frank Kober, and Min-Chi Ku

40 Analysis Protocol for the Quantification of Renal pH Using Chemical Exchange Saturation Transfer (CEST) MRI 667
Habnsung Kim, Yin Wu, Daisy Villano, Dario Livio Longo, Michael T. McMahon, and Phillip Zhe Sun

41 Analysis Protocol for Renal Sodium (^{23}Na) MR Imaging 689
James T. Grist, Esben Søvsø Szocska Hansen, Frank G. Zöllner, and Christoffer Laustsen

42 Analysis Methods for Hyperpolarized Carbon (^{13}C) MRI of the Kidney 697
Galen D. Reed, Natalie J. Korn, Christoffer Laustsen, and Cornelius von Morze

43 Data Preparation Protocol for Low Signal-to-Noise Ratio Fluorine-19 MRI 711
Ludger Starke, Thoralf Niendorf, and Sonia Waiczies

Index 723

Contributors

- SUSAN J. BACK • *Department of Radiology, Children's Hospital of Philadelphia, Philadelphia, PA, USA*
- OCTAVIA BANE • *BioMedical Engineering and Imaging Institute, Icahn School of Medicine at Mount Sinai, New York, NY, USA; Department of Radiology, Icahn School of Medicine at Mount Sinai, New York, NY, USA*
- SCOTT C. BEEMAN • *Washington University School of Medicine, St. Louis, MO, USA*
- KEVIN M. BENNETT • *Washington University School of Medicine, St. Louis, MO, USA*
- PHILIPP BOEHM-STURM • *Department of Experimental Neurology, Center for Stroke Research and Charité Core Facility 7T Experimental MRIs, Charité-Universitätsmedizin Berlin, Berlin, Germany*
- G. LARRY BRETTTHORST • *Washington University School of Medicine, St. Louis, MO, USA*
- KATHLEEN CANTOW • *Working Group Integrative Kidney Physiology, Institute of Physiology, Charité—University Medicine Berlin, Berlin, Germany; Institute of Physiology and Center for Cardiovascular Research, Charité – Universitätsmedizin Berlin, Berlin, Germany*
- ANNA CAROLI • *Medical Imaging Unit, Bioengineering Department, IRCCS Istituto di Ricerche Farmacologiche Mario Negri, Bergamo, Italy*
- KAI-HSIANG CHUANG • *Queensland Brain Institute and Centre for Advanced Imaging, The University of Queensland, Brisbane, QLD, Australia*
- LORENA CONSOLINO • *Department of Molecular Biotechnology and Health Sciences, University of Torino, Torino, Italy*
- WALTER DASTRÙ • *Department of Molecular Biotechnology and Health Sciences, University of Torino, Torino, Italy*
- SABRINA DOBLAS • *Laboratory of Imaging Biomarkers, Centre de Recherche sur l'Inflammation, Inserm UMR 1149, Université de Paris and AP-HP, Paris, France*
- ROGER G. EVANS • *Cardiovascular Disease Program, Biomedicine Discovery Institute and Department of Physiology, Monash University, Melbourne, VIC, Australia*
- SEAN B. FAIN • *Department of Radiology, University of Wisconsin, Madison, WI, USA*
- ANDREA FEKETE • *1st Department of Pediatrics, Semmelweis University, Budapest, Hungary*
- MARÍA A. FERNÁNDEZ-SEARA • *Radiology Department, Clínica Universidad de Navarra, University of Navarra, Pamplona, Spain*
- BERT FLEMMING • *Working Group Integrative Kidney Physiology, Institute of Physiology, Charité—University Medicine Berlin, Berlin, Germany*
- ANDREIA C. FREITAS • *Institute for Systems and Robotics (LARSyS) and Department of Bioengineering, Instituto Superior Técnico, University of Lisbon, Lisbon, Portugal*
- IRIS FRIEDLI • *Antaros Medical, BioVenture Hub, Mölnådal, Sweden*
- DIETER FUCHS • *FUJIFILM VisualSonics, Inc, Amsterdam, The Netherlands*
- JOEL R. GARBOW • *Washington University School of Medicine, St. Louis, MO, USA*
- PHILIPPE GARTEISER • *Laboratory of Imaging Biomarkers, Centre de Recherche sur l'Inflammation, Inserm UMR 1149, Université de Paris and AP-HP, Paris, France*
- THOMAS GLADYTZ • *Physikalisch-Technische Bundesanstalt (German Federal Metrologic Institute), Berlin, Germany*
- JAMES T. GRIST • *Institute of Cancer and Genomic Sciences, University of Birmingham, Birmingham, UK*

- DIRK GROSENICK • *Physikalisch-Technische Bundesanstalt (German Federal Metrologic Institute), Berlin, Germany*
- BRADLEY HACK • *Department of Radiology, NorthShore University HealthSystem, Evanston, IL, USA*
- ESBEN SØVSØ SZOCSKA HANSEN • *Department of Clinical Medicine, The MR Research Center, Aarhus University, Aarhus, Denmark*
- STEFANIE J. HECTOR • *BioMedical Engineering and Imaging Institute, Icahn School of Medicine at Mount Sinai, New York, NY, USA; Department of Radiology, Icahn School of Medicine at Mount Sinai, New York, NY, USA; Department of Radiology, Weill Cornell Medicine, New York, NY, USA*
- ADAM HOSSZU • *1st Department of Pediatrics, Semmelweis University, Budapest, Hungary*
- LINGZHI HU • *United Imaging Healthcare, Houston, TX, USA*
- PIETRO IRRERA • *University of Campania “Luigi Vanvitelli”, Naples, Italy*
- NEIL PETER JEROME • *Institute for Circulation and Diagnostic Imaging, Norwegian University of Science and Technology (NTNU), Trondheim, Norway; Department of Radiology and Nuclear Medicine, St. Olav’s University Hospital, Trondheim, Norway*
- TAMAS KAUCSAR • *1st Department of Pediatrics, Semmelweis University, Budapest, Hungary*
- RALPH KETTRITZ • *Experimental and Clinical Research Center, Berlin, Germany*
- HAHNSUNG KIM • *Yerkes Imaging Center, Yerkes National Primate Research Center, Emory University, Atlanta, GA, USA; Department of Radiology and Imaging Sciences, Emory University School of Medicine, Atlanta, GA, USA*
- FRANK KOBER • *Aix-Marseille Université, CNRS UMR7339, Faculté de Médecine, Centre de Résonance Magnétique Biologique et Médicale (CRMBM), Marseille, France*
- NATALIE J. KORN • *Radiology and Biomedical Imaging, University of California, San Francisco, CA, USA*
- MIN-CHI KU • *Berlin Ultrahigh Field Facility (B.U.F.F.), Max Delbrück Center for Molecular Medicine (MDC) in the Helmholtz Association, Berlin, Germany*
- ANDRÉ KÜHNE • *MRI.TOOLS GmbH, Berlin, Germany*
- EKKEHARD KÜSTERMANN • *AG In vivo Imaging, University of Bremen, Bremen, Germany*
- MECHTHILD LADWIG-WIEGARD • *Institute of Animal Welfare, Animal Behavior and Laboratory Animal Science, Free University Berlin, Berlin, Germany*
- CHRISTOFFER LAUSTSEN • *Department of Clinical Medicine, The MR Research Center, Aarhus University, Aarhus, Denmark*
- LU-PING LI • *Department of Radiology, NorthShore University HealthSystem, Evanston, IL, USA*
- ALEXANDRA LJIMANI • *Department of Diagnostic and Interventional Radiology, Medical Faculty, University Dusseldorf, Dusseldorf, Germany*
- DARIO LIVIO LONGO • *Institute of Biostructures and Bioimaging (IBB), Italian National Research Council (CNR), Torino, Italy*
- NUNO LOUÇAO • *Philips Healthcare, Lisbon, Portugal*
- MICHAEL T. MCMAHON • *F.M. Kirby Research Center for Functional Brain Imaging, Kennedy Krieger Institute, Baltimore, MD, USA; Division of MR Research, The Russell H. Morgan Department of Radiology and Radiological Science, The Johns Hopkins University School of Medicine, Baltimore, MD, USA*
- MARTIN MEIER • *ZTL-Imaging Center, Hannover Medical School, Hannover, Germany; Institute for Laboratory Animal Science, Hannover Medical School, Hannover, Germany*
- SANDRA MEYER • *FUJIFILM VisualSonics, Inc, Amsterdam, The Netherlands*
- BASTIEN MILANI • *Département de Médecine, Service de Néphrologie, Centre Hospitalier Universitaire Vaudois, Vaud, Switzerland*

- JASON M. MILLWARD • *Berlin Ultrahigh Field Facility (B.U.F.F.), Max Delbrück Center for Molecular Medicine (MDC) in the Helmholtz Association, Berlin, Germany*
- ANDREAS MÜLLER • *Clinic for Diagnostic and Interventional Radiology, University of the Saarland, Homburg, Germany*
- MARC NAZARÉ • *Medicinal Chemistry, Leibniz-Forschungsinstitut für Molekulare Pharmakologie (FMP), Berlin, Germany*
- THORALF NIENDORF • *Berlin Ultrahigh Field Facility (B.U.F.F.), Max Delbrück Center for Molecular Medicine (MDC) in the Helmholtz Association, Berlin, Germany*
- RITA G. NUNES • *Institute for Systems and Robotics (LARSyS) and Department of Bioengineering, Instituto Superior Técnico, University of Lisbon, Lisbon, Portugal*
- MICHAEL A. OHLIGER • *Department of Radiology and Biomedical Imaging, UC San Francisco, San Francisco, CA, USA*
- GWENAËL PAGÉ • *Laboratory of Imaging Biomarkers, Centre de Recherche sur l'Inflammation, Inserm UMR 1149, Université de Paris and AP-HP, Paris, France*
- HUA PAN • *Heart Institute, Morsani College of Medicine, University of South Florida, Tampa, FL, USA*
- KOWSALYA DEVI PAVULURI • *Division of MR Research, The Russell H. Morgan Department of Radiology and Radiological Science, The Johns Hopkins University School of Medicine, Baltimore, MD, USA*
- MICHAEL PEDERSEN • *Department of Clinical Medicine—Comparative Medicine Lab, Aarhus University, Aarhus, Denmark*
- JOÃO S. PERIQUITO • *Berlin Ultrahigh Field Facility (B.U.F.F.), Max Delbrück Center for Molecular Medicine (MDC) in the Helmholtz Association, Berlin, Germany*
- ANDREAS POHLMANN • *Berlin Ultrahigh Field Facility (B.U.F.F.), Max Delbrück Center for Molecular Medicine (MDC) in the Helmholtz Association, Berlin, Germany; Siemens Healthcare, Berlin, Germany*
- PABLO GARCÍA POLO • *Global Research Organization (GRO), GE Healthcare, Dallas, TX, USA*
- POTTUMARTHI V. PRASAD • *Department of Radiology, NorthShore University HealthSystem, Evanston, IL, USA*
- CHRISTIAN PRINZ • *Berlin Ultrahigh Field Facility (B.U.F.F.), Max Delbrück Center for Molecular Medicine (MDC) in the Helmholtz Association, Berlin, Germany*
- MENNO PRUIJM • *Department of Medicine, Service of Nephrology, Lausanne University Hospital and University of Lausanne, Lausanne, Switzerland*
- PAULA RAMOS DELGADO • *Berlin Ultrahigh Field Facility (B.U.F.F.), Max Delbrück Center for Molecular Medicine (MDC) in the Helmholtz Association, Berlin, Germany*
- GALEN D. REED • *GE Healthcare, Dallas, TX, USA*
- HENNING M. REIMANN • *Berlin Ultrahigh Field Facility (B.U.F.F.), Max Delbrück Center for Molecular Medicine, Berlin, Germany*
- LEILI RIAZY • *Experimental and Clinical Research Center, Charité—Universitätsmedizin Berlin, Berlin, Germany*
- JENS ROSENBERG • *The National High Magnetic Field Laboratory, Florida State University, Tallahassee, FL, USA*
- CARLOTA M. SANTOS • *Institute for Systems and Robotics (LARSyS) and Department of Bioengineering, Instituto Superior Técnico, University of Lisbon, Lisbon, Portugal*
- ADRIAN SCHREIBER • *Experimental and Clinical Research Center, Berlin, Germany; Department of Nephrology and Medical Intensive Care, Charité-Universitätsmedizin Berlin, Berlin, Germany*

- ERDMANN SEELIGER • *Working Group Integrative Kidney Physiology, Institute of Physiology, Charité—University Medicine Berlin, Berlin, Germany; Department of Medicine, Service of Nephrology, Lausanne University Hospital and University of Lausanne, Lausanne, Switzerland*
- SURAJ D. SERAI • *Department of Radiology, Children’s Hospital of Philadelphia, University of Pennsylvania, Philadelphia, PA, USA*
- STEVEN SOURBRON • *Department of Infection, Immunity & Cardiovascular Disease, The University of Sheffield, Sheffield, UK*
- LUDGER STARKE • *Berlin Ultrahigh Field Facility (B.U.F.F.), Max Delbrück Center for Molecular Medicine (MDC) in the Helmholtz Association, Berlin, Germany*
- PHILLIP ZHE SUN • *Yerkes Imaging Center, Yerkes National Primate Research Center, Emory University, Atlanta, GA, USA; Department of Radiology and Imaging Sciences, Emory University School of Medicine, Atlanta, GA, USA; Athinoula A. Martinos Center for Biomedical Imaging, Department of Radiology, Massachusetts General Hospital and Harvard Medical School, Charlestown, MA, USA*
- KARSTEN TABELOW • *Weierstrass Institute for Applied Analysis and Stochastics, Berlin, Germany*
- BERNARD E. VAN BEERS • *Laboratory of Imaging Biomarkers, Centre de Recherche sur l’Inflammation, Inserm UMR 1149, Université de Paris and AP-HP, Paris, France*
- DAISY VILLANO • *Department of Molecular Biotechnology and Health Sciences, University of Torino, Torino, Italy*
- CORNELIUS VON MORZE • *Mallinckrodt Institute of Radiology, Washington University, St. Louis, MO, USA; Department of Radiology, Washington University, St. Louis, MO, USA*
- HELMAR WAICZIES • *MRI.TOOLS GmbH, Berlin, Germany*
- SONIA WAICZIES • *Berlin Ultrahigh Field Facility (B.U.F.F.), Max Delbrück Center for Molecular Medicine (MDC) in the Helmholtz Association, Berlin, Germany*
- ZHEN J. WANG • *Department of Radiology and Biomedical Imaging, UC San Francisco, San Francisco, CA, USA*
- JOHN C. WATERTON • *Division of Informatics Imaging & Data Sciences, Faculty of Biology Medicine & Health, Centre for Imaging Sciences, School of Health Sciences, Manchester Academic Health Sciences Centre, University of Manchester, Manchester, UK*
- SAMUEL A. WICKLINE • *Heart Institute, Morsani College of Medicine, University of South Florida, Tampa, FL, USA*
- YIN WU • *Athinoula A. Martinos Center for Biomedical Imaging, Department of Radiology, Massachusetts General Hospital and Harvard Medical School, Charlestown, MA, USA; Paul C. Lauterbur Research Center for Biomedical Imaging, Shenzhen Institutes of Advanced Technology, Chinese Academy of Sciences, Shenzhen, Guangdong, China*
- MENG YIN • *Department of Radiology, Mayo Clinic, Rochester, MN, USA*
- KAIXUAN ZHAO • *Berlin Ultrahigh Field Facility (B.U.F.F.), Max Delbrück Center for Molecular Medicine (MDC) in the Helmholtz Association, Berlin, Germany; School of Biomedical Engineering, Southern Medical University, Guangzhou, China; Guangdong Provincial Key Laboratory of Medical Image Processing, Southern Medical University, Guangzhou, China*
- FRANK G. ZÖLLNER • *Computer Assisted Clinical Medicine, Medical Faculty Mannheim, Heidelberg University, Mannheim, Germany*

Part I

Introduction



Chapter 1

Recommendations for Preclinical Renal MRI: A Comprehensive Open-Access Protocol Collection to Improve Training, Reproducibility, and Comparability of Studies

Andreas Pohlmann, Susan J. Back, Andrea Fekete, Iris Friedli, Stefanie Hectors, Neil Peter Jerome, Min-Chi Ku, Dario Livio Longo, Martin Meier, Jason M. Millward, João S. Periquito, Erdmann Seeliger, Suraj D. Serai, Sonia Waiczies, Steven Sourbron, Christoffer Laustsen, and Thoralf Niendorf

Abstract

Renal MRI holds incredible promise for making a quantum leap in improving diagnosis and care of patients with a multitude of diseases, by moving beyond the limitations and restrictions of current routine clinical practice. Clinical and preclinical renal MRI is advancing with ever increasing rapidity, and yet, aside from a few examples of renal MRI in routine use, it is still not good enough. Several roadblocks are still delaying the pace of progress, particularly inefficient education of renal MR researchers, and lack of harmonization of approaches that limits the sharing of results among multiple research groups.

Here we aim to address these limitations for preclinical renal MRI (predominantly in small animals), by providing a comprehensive collection of more than 40 publications that will serve as a foundational resource for preclinical renal MRI studies. This includes chapters describing the fundamental principles underlying a variety of renal MRI methods, step-by-step protocols for executing renal MRI studies, and detailed guides for data analysis. This collection will serve as a crucial part of a roadmap toward conducting renal MRI studies in a robust and reproducible way, that will promote the standardization and sharing of data.

This chapter is based upon work from the COST Action PARENCHIMA, a community-driven network funded by the European Cooperation in Science and Technology (COST) program of the European Union, which aims to improve the reproducibility and standardization of renal MRI biomarkers.

Key words Magnetic resonance imaging (MRI), Kidney, Animals, Acute kidney injury, Chronic kidney disease, Training, Standardization

1 Who Is Pulling the Brakes in Renal MRI?

1.1 Renal MRI in Clinical Practice— Fantasy, Dream, or Reality?

Magnetic resonance imaging (MRI) of the kidney is not brain surgery—it's better! It can save lives without invasive surgery, noninvasively. This statement—a play on Donald W McRobbie's "MRI is not rocket science, it's better" in *MRI From Picture to Proton*—is one that Dr. Susan Back, radiologist and director of Pediatric Genitourinary Imaging at the Children's Hospital of Philadelphia, would sign on to without hesitation. It's Thursday afternoon and she is just running an MRI scan on a 4-year-old boy with a left kidney urinary tract dilation, which was gradually increasing on ultrasound. This is the last sequence in the MRI protocol: a contrast-enhanced dynamic 3D T₁-weighted GRE sequence with a temporal resolution of ~8 s, used for quantitative functional urography [1]. Before, an anatomic T₂-weighted MR urogram [1] was performed to identify possible anatomic causes of obstruction (Fig. 1), which are difficult to find with ultrasound. These renal MRI data play a key role in the diagnosis and treatment decisions. The configuration of the kidney on the MRI is concerning for an ureteropelvic junction obstruction because there is an abrupt transition from the renal pelvis to the proximal ureter. However, having this anatomic image and the functional information generated

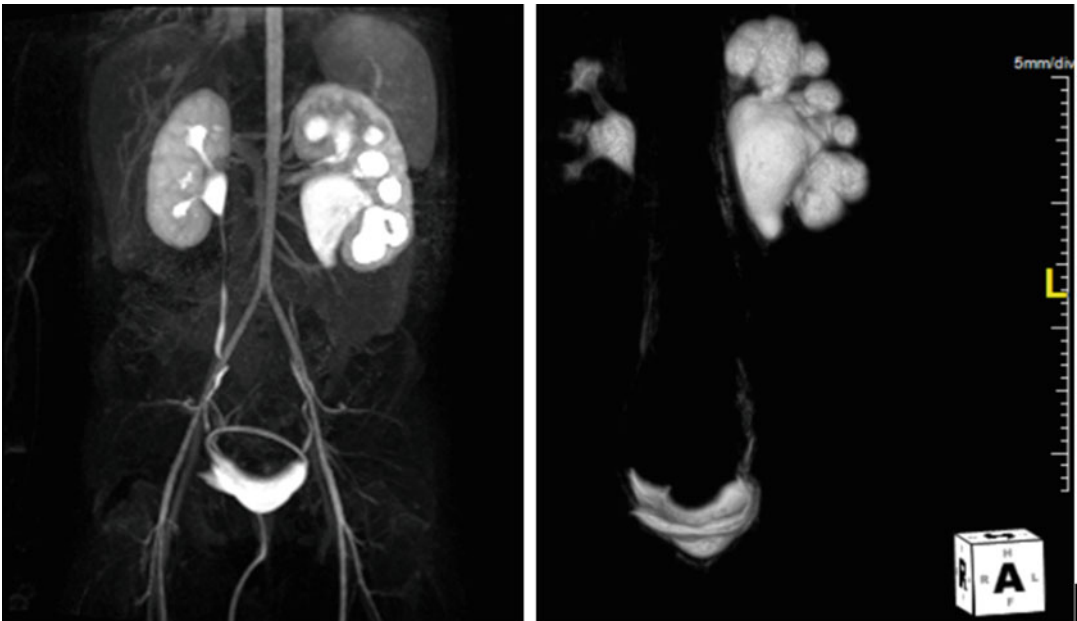


Fig. 1 Renal MRI used for diagnosis and treatment planning of a 4-year-old boy with a left kidney urinary tract dilation. The anatomic portion of the MR urogram study (left: postprocessed image created by superimposing the vascular/parenchymal enhancement phase with the renal excretion phase; right: 3D rendering) depicted the left urinary tract dilation with an abrupt transition in caliber between the dilated renal pelvis and the proximal ureter

using dynamic imaging shows good excretion and proves that the kidney is not obstructed. For the decision on whether to operate, the urologist takes a look at the quantitative functional information. Offline analysis of the dynamic data using the Parametric MRI software package (www.parametricmri.com) [2] provided a wide range of quantitative parameters for assessment of renal function, including renal transit time, calyceal transit time, volumetric differential renal function (vDRF), and Patlak differential renal function (pDRF). The other good news is that the left kidney is functioning similarly to the normal right kidney (vDRF: 48%/52%, pDRF: 49%/51%) so the urologist decides not to operate and the child would be put under observation.

While this scene of renal MRI in clinical routine use vividly illustrates the dream and ambition of many renal MRI researchers—clinicians (nephrologists, urologists, radiologists, surgeons, etc.), clinical scientists, MRI scientists, and basic scientists alike—it may, to the more realistic ones, be perhaps no more than a wild phantasy. However, for the vast majority of kidney patients worldwide, reality couldn't be more different: diagnosis and treatment decisions are predominantly based on plasma and urine parameters, that are known to be insensitive and unspecific. Information on increased serum creatinine is literally too little too late. Currently, the estimated glomerular filtration rate (eGFR; commonly calculated from serum creatinine including variables for age, gender, race) is “the best overall index of kidney function” [3], but it “is an unreliable tool to assess renal function in health and disease, as well as in clinical practice and research” [4]. It is like trying to study the complex bio system of the vast Amazon river basin solely by taking water samples at the mouth of the river.

1.2 Renal MRI, Where Are You?

Renal MRI undoubtedly holds great potential to improve diagnosis and care for millions of patients. The scientific literature reveals hundreds of renal MRI studies, both in patients and animals, aiming to demonstrate its clinical value, and to detail and validate the observed changes in functional and structural parameters. On reading the introductions of these studies we are typically being reminded of the millions of patients suffering from renal disease—acute kidney injuries (AKI) and chronic kidney diseases (CKD)—as well as the steadily growing number of diabetes patients of which many are inevitably en route to diabetic nephropathy. This is usually followed by highlighting the urgent need for more sensitive and specific bio markers, with renal MRI being a prime candidate. Yet renal MRI is still virtually absent from the radar screen of the nephrologist, and patients like those at the Children's Hospital of Philadelphia are a rare exception. What is going wrong?

1.3 Function, Function, Function

If the three most important characteristics that determine the value of a house are often considered to be “location, location, location,” then the three most important characteristics of the kidney are

“function, function, function”—rather than its structure/morphology. Morphology, however, is what conventional clinical MRI is all about in the vast majority of cases. Radiologists are trained to detect and identify the subtle deviations from “normal” morphology on grayscale images with different T_1 or $T_2(T_2^*)$ weighting. This leads to three challenges for renal MRI: (1) assessing functional images, for example of perfusion or blood oxygenation, requires new training and learning of what “normality” means; (2) almost all renal MRI techniques provide “exotic” pseudocolored parametric maps rather than conventional weighted images; (3) interpreting changes in these MR parameters in the context of the complex renal physiology is anything but trivial—in other words: we don’t really know what they mean.

Particularly for the last point, preclinical research is crucial because it enables researchers to obtain from the same organ MRI data together with physiological parameters from invasive probes, as well as histological data. Obvious examples are the comparison of T_1 and ADC with the degree of fibrosis from histology [5], ASL perfusion with invasively measured renal blood flow and local flux, or T_2^* with invasively measured tissue oxygenation [6]. Moreover, in preclinical studies the application of (ir)reversible experimental interventions permits studying the complex relationships between MRI parameters and quantitative physiological parameters in the context of kidney-specific control of hemodynamics and oxygenation (*see* the chapter by Cantow K et al. “Reversible (Patho) Physiologically Relevant Test Interventions: Rationale and Examples”). Clearly, a lot more work needs to be done to establish and translate renal MRI into clinical practice, and preclinical research is an essential part of this process. Shedding some light on where we are with regard to research activity in MRI of the kidney may help us drive forward the development of renal MRI.

1.4 Research Activity in Renal MRI

Renal and cardiac MRI both started as niche applications, with their own unique challenges for clinical translation, ranging from acquisition to analysis and interpretation. Cardiac MRI has already become an established clinical tool, which is supported and driven by a dedicated international society (Society for Cardiovascular Magnetic Resonance (SCMR), scmr.org) and guided by >10 published consensus/position statements (scmr.org/page/guidelines). Renal MRI, on the other hand, is struggling to get off the ground.

Conceivably, this divergence is partially due to the usefulness of morphological MRI, which is rather different for both applications. Unlike cardiac MRI, with its workhorse - cardiac function assessment - being based on (cinematic) morphological images, renal MRI depends on multi-parametric structural and functional information, derived from T_1 , T_2 , BOLD, DWI, ASL, etc. A second reason might be the availability of treatment and the nature of the diseases. Due to the still rather limited treatment options for CKD, performing complicated and expensive MRI exams still seems less

critical than in cardiac disease where there are more management options. It is expected that the emergence of new CKD treatments will stimulate the interest in renal MRI.

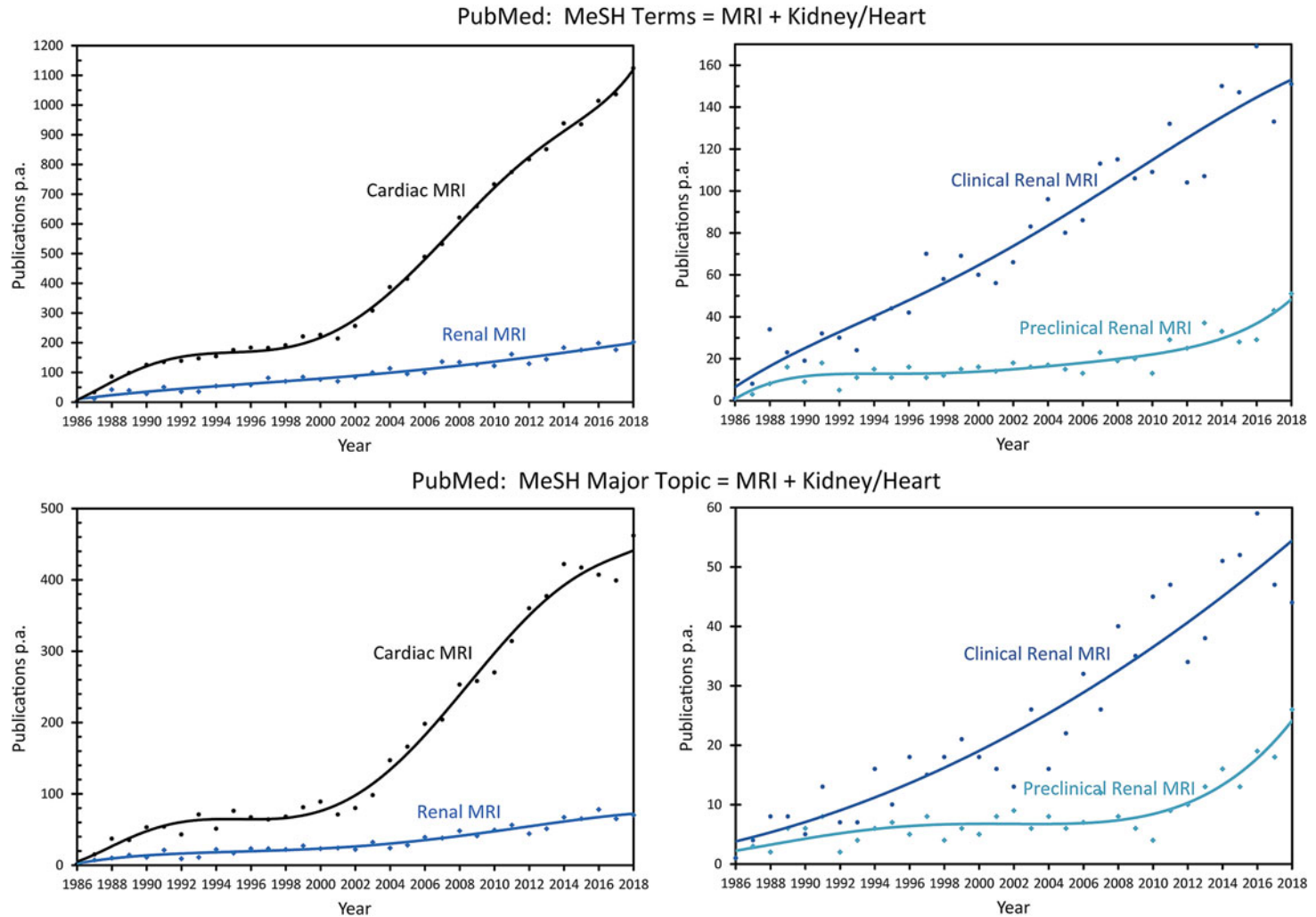
It is interesting to consider exactly how much clinical and preclinical research activity in cardiac and renal MRI there has been, and how it has grown over the years. Using publications listed in PubMed as an indicator, we performed tailored searches with PubMed's *Medical Subject Headings* (MeSH) to obtain lists of literature on renal/cardiac MRI in humans/animals (Fig. 2, upper panels). Additionally we used PubMed's *MeSH Major Topic* to restrict the searches to papers that focus on renal/cardiac MRI while excluding articles that only mention these terms but have another focus (Fig. 2, lower panels) (*see Note 1*).

The number of publications in both fields has grown considerably over the years, but at very different rates. Around 1000 cardiac MRI papers per year were published during 2014–2018; the equivalent number for renal MRI papers was only around 200. After restricting the search to papers with a main focus on MRI of the kidney/heart the number of papers per year were 400 and 70, respectively. In other words, a lot more research activity in renal MRI is needed. From the number of publications one can deduce that there is considerably more clinical research than preclinical research in renal MRI. Conceivably, this is partially due to the more limited availability of preclinical MRI systems. However, preclinical renal MRI has recently seen a rapid increase to 37% of all renal MRI publications. This highlights the importance of animal research in renal MRI, considering that only 5% of cardiac MRI papers are preclinical (as of 2018).

The *renal MRI research community* is still rather small. While a recent SCMR meeting attracted more than 1900 attendees [7], international meetings on renal MRI have had approximately 150–200 attendees [8, 9]. Around 200 experts in renal MRI from 30 countries are part of PARENCHIMA (renalMRI.org), a community-driven Action in the COST program of the European Union, with the aim to improve the reproducibility and standardization of renal MRI biomarkers. In fact, the number of research groups active in preclinical renal MRI is only 1/5 of those active in clinical renal MRI (*see Note 2*). One important conclusion from this is that accelerating the development of renal MRI will require more researchers and institutions to enter the field. We may ask ourselves, “What hurdles are slowing down progress and impeding clinical translation?”

1.5 The Usual Suspects

For a novel MRI technique, the road to routine clinical use is a stony one, involving issues such as reimbursement, available time for MRI, evidence needed that the new method is superior to existing techniques, and availability of hardware/software and trained staff. However, most renal MRI techniques are still at an early phase of development. Here, learning how to correctly



interpret the MRI parameters (T_1 , T_2^* , ADC, etc.) and establishing normal ranges for these MRI parameters are only two of the items on the to-do list.

When searching for the culprits for the slow development of renal MRI, we also encounter the usual suspects: lack of training and standardization. This will sound familiar to most academic researchers. The workforce of academic research consists primarily of PhD students, who typically start their MRI research lacking the most relevant knowledge, and thus spend half or even more of their 3- to 4-year project learning the necessary theory, skills, hands-on experience and the many “secret tricks” that are essential for performing successful studies but are not found in the usual literature. This is problem #1: inefficient learning.

When designing a study, researchers encounter a further difficulty. Puzzled by the great variety of protocols (and diversity of equipment) in the literature, and often lacking an explanation for the choice of parameters, they are forced to design their study based on their own rationales and gut feelings. This is problem #2: lack of standardization. This not only hampers new researchers in setting up their studies but, even more devastatingly, has a detrimental effect on the comparability and reproducibility of research. This is a major obstacle to fast and efficient research and development.

When researchers finally publish their results, they do so in the usual format of a scientific paper, which focuses on a concise description of the problem, proposed solution, main findings, and a discussion of the meaning and limitations of the study. Important details about the practicalities of actually conducting the experiments are usually omitted. When individuals leave the lab, most of their crucial experience and expertise is lost. The cycle starts again with the next student.

2 How Can Training and Standardization Be Improved?

2.1 A Roadmap for Improved Training and Standardization of Renal MRI

Let’s recap: the box of diagnostic tools available to the nephrologists is still rather poorly equipped (mostly insensitive and nonspecific plasma/urine markers), and renal MRI has the potential to be a game changer for the treatment of AKI and CKD. To address the numerous challenges of clinical translation of renal MRI, much more research activity is needed, and the community needs to grow. Among the factors preventing rapid progress are inefficient learning and lack of standardization. To overcome these roadblocks we suggest a roadmap for improving the training and standardization of preclinical and clinical renal MRI (Fig. 3). This combines protocol collections in the *Springer Protocols* book format with consensus-based technical recommendation papers based on the Delphi method.

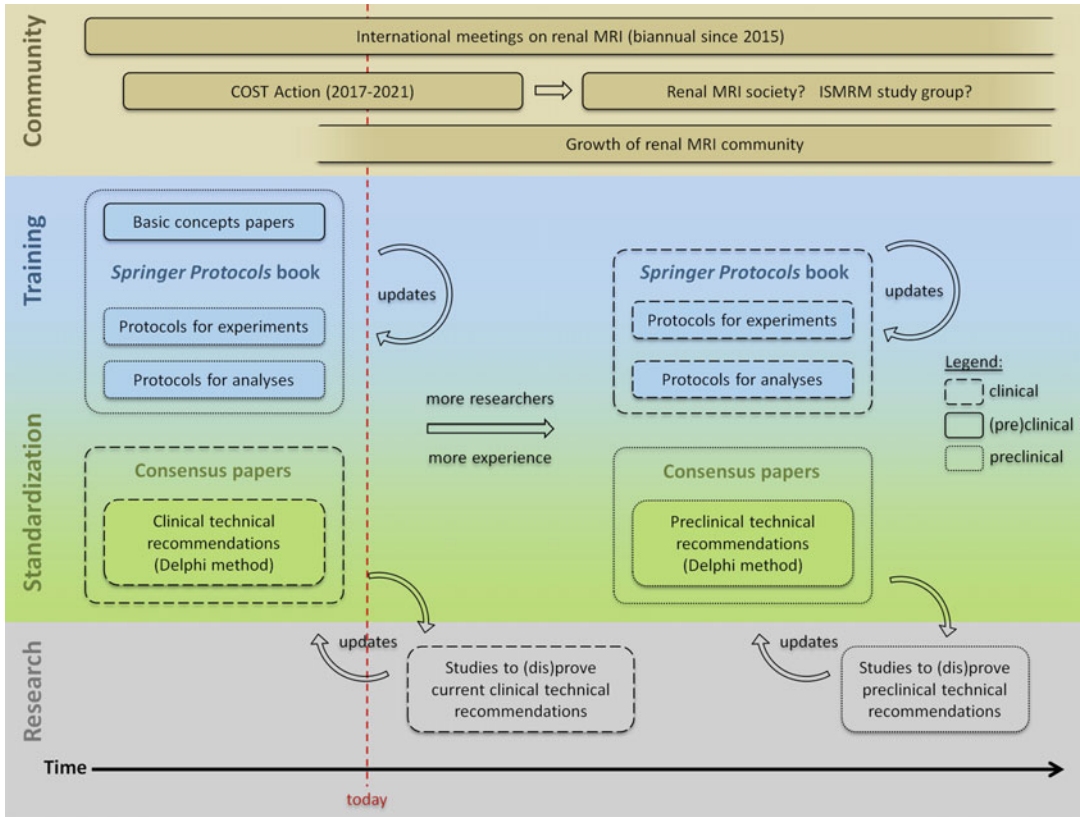


Fig. 3 Suggested roadmap for improving the training and standardization of preclinical and clinical renal MRI. It combines *Springer Protocols* books (excellent for training but also provides working protocols that help to improve comparability/standardization of future studies) with consensus-based technical recommendation papers (established tool to move toward standardization of studies). clinical = human MRI, (pre)-clinical = human and animal MRI, preclinical = animal MRI

Springer Protocols is “the world’s largest collection of protocols of biomedical and life sciences,” currently with over 58,000 step-by-step experimental protocols in more than 2000 books. The protocols are published individually as electronic publications in the PubMed cited journal *Methods in Molecular Biology* as well as in the form of printed books, with each book representing a collection of protocols for a specific topic. “Each protocol is provided in readily-reproducible step-by-step fashion, opening with an introductory overview, a list of the materials and reagents needed to complete the experiment, and followed by a detailed procedure that is supported with a helpful notes section offering tips and tricks of the trade as well as troubleshooting advice.” [10]. This format makes *Springer Protocols* an excellent tool for training, and by providing working protocols, they also help to improve the reproducibility, comparability, and standardization of studies. Researchers are less likely to perform studies with “arbitrary” protocols and parameters when tested and proven protocols are readily available.

An established step toward standardization are consensus-based technical recommendation papers published as articles in technical journals. The process of developing expert consensus on technical aspects is a challenge. Here the Delphi method [11] can help to generate consensus statements: anonymous surveys that ensure all opinions are heard, free from peer pressure, are followed by rounds of face-to-face discussions. This iterative method permits “reaching reliable consensus in practice guidelines on health-care-related issues and on topics where there is little or no definitive evidence and where opinion is important” [12].

Because step-by-step protocols and technical recommendations address different ends of the training-standardization spectrum (Fig. 3), both perfectly complement each other. When deciding which step to take first, one needs to take into account the specific situation, that is, the size of the research community, the amount of hands-on experience available, the range of different equipment in use, the range of different subjects/objects being investigated, and so on. In these aspects clinical and preclinical renal MRI differ significantly. The number of research groups active in clinical renal MRI is five times the number of those active in preclinical renal MRI (*see* Subheading 1.4). In the clinical setting the range of setups (RF coils, field strengths) and subjects is much smaller than in preclinical settings. Even though we highlighted pediatric renal MRI in the introduction, the vast majority of renal MRI studies are performed on adult subjects at 1.5 or 3.0T. In preclinical renal MRI predominantly two species of very different size—mice and rats—are investigated at fields strengths of 3.0T, 4.7T, 7.0T, 9.4T, 11.7T, and 16.4T, with a wide range of RF coils ranging from human wrist coils to RX surface array + TX volume resonator combinations tailored for mouse or rat cardiac MRI, to cryogenically cooled TX/RX surface coils. These variations in setup influence numerous factors, including the achievable signal-to-noise ratio, the spatial resolution, and the relaxation times (T_1 , T_2 , T_2^*), thus leading to substantially different MRI protocols. Both the great technical variety and the small size of the preclinical renal MRI community make reaching consensus-based technical recommendations particularly challenging, because many different sets of recommendations would be needed to address all commonly used study setups. Therefore, while consensus-based technical recommendations may be the natural first step for clinical renal MRI, for preclinical MRI we decided to focus instead on creating a comprehensive *Springer Protocols* collection to improve training and comparability of studies.

Both, consensus-based recommendations papers and protocols collections, can only be fully effective if they are made openly accessible. Therefore, we are very glad that it was possible to make these publications open-access thanks to support from the COST Action PARENCHIMA (renalMRI.org).

2.2 Driving on the Road to more Efficient Renal MRI Research: Are We There Yet?

The answer is, of course, “not yet,” as there is still some distance left to drive. But a giant leap has been made already, thanks to the COST Action PARENCHIMA (renalmri.org), which unites more than 200 experts in renal MRI from 30 countries, and the time, effort, and energy invested by more than 100 authors. After recent clinical position papers (https://academic.oup.com/ndt/issue/33/suppl_2) confirmed the demand, two projects have been implemented: The consensus-based technical recommendations for clinical translation of renal MRI (described in [12]) and the *Springer Protocols* book on preclinical renal MRI (described in Subheading 3).

Four papers present the results of applying the Delphi method to clinical renal MRI: arterial spin labeling (ASL) perfusion, blood oxygenation level dependent (BOLD) MRI, diffusion-weighted imaging (DWI), and mapping of renal T_1/T_2 [13–16]. This process generated over 160 consensus statements but also flagged topics where experts were currently unable to agree on a recommendation. These first ever technical recommendations for renal MRI should spark research into their appropriateness, with the aim to either prove or disprove specific recommendations. The findings of these future studies should then be fed back into updated and revised versions of the technical recommendations papers (Fig. 3). We hope that this approach will gradually lead to an alignment of the methods for measuring renal MRI biomarkers. It goes without saying that also the spectrum of methods covered must be extended in the future.

In the roadmap (Fig. 3), we propose to supplement these fresh off the press, already existing publications with the respective other parts, so that there will be step-by-step protocols as well as consensus-based technical recommendations available for both clinical and preclinical renal MRI. Here, the *Springer Protocols* for clinical MRI of the kidney are a placeholder for any type of protocol style journal, that is, *Methods in Molecular Biology (Springer Protocols)*, *Nature Protocols*, *Protocol Exchange*, *Journal of Visualized Experiments (JoVE)*, and so on. In contrast to the *Springer Protocols*, the latter permits independent publications on specific methods, which could be advantageous for clinical renal MRI, as it would not be necessary to publish protocols for many methods simultaneously. Needless to say, regularly updating all protocols and recommendations will be a challenging but, nevertheless, very important part of advancing the progress of renal MRI.

3 The Springer Protocols Book on Preclinical Renal MRI

Since Douglas Adams’s *The Hitchhiker’s Guide to the Galaxy* was first published in 1979, the number “42” has been claimed to be the answer to the question of “life, the universe, everything.” After more than 2 years of hard work by 90 authors, the answer to the

question, “How can we improve the training and standardization of preclinical renal MRI?” resulted in the 42 (other) chapters of this *Springer Protocols* book Pohlmann A, Niendorf T (eds) (2020) “Preclinical MRI of the Kidney—Methods and Protocols,” Springer, New York. In the following subsections we describe the tailored concept of the book and the topics covered by the chapters.

3.1 Concept and Special Features of the Book

When we started to think about the structure and content of this book on preclinical renal MRI (with main focus on small animals), it immediately became clear that a simple collection of independent chapters would not suffice, for a multitude of reasons. First, there are many important aspects involved in renal MRI that are relevant to any MRI method: it does not make sense that for every individual method the protocol would include considerations and instructions regarding the MRI hardware, animal preparation, physiological monitoring, or image slice planning and shimming. Second, due to the complexity of MRI it is very challenging to include all the information about a method in a single chapter. If the book was to become a one-stop-shop for learning renal MRI in small animals, a concept was needed. In the following we describe its concept and special features.

3.1.1 Provide all the Necessary Information for each Method

With a few exceptions, we included three chapters for each renal MRI method:

1. There is one chapter describing the **basic concepts** of the method. We believe a sound understanding of the measurement concept is essential when planning, performing, analyzing, and interpreting a study. This is complemented by a brief **overview of the preclinical renal applications**, in order to illustrate for what kind of questions and applications each technique is useful for.
2. A **step-by-step experimental protocol**, which we know from the many existing *Springer Protocols* books. These protocols are the core of the book. For less complex methods they include also instructions for data analysis.
3. Detailed **step-by-step protocols for data analysis**.

3.1.2 Generalize Protocols by Peer Review

Although we trusted that each author had extensive experience and described the protocols correctly and in an understandable manner, we endeavored to make sure these were free from lab specific techniques, assumptions and limitations, which could be due, for example, to the (un)availability of equipment or traditions. Because these **protocols should also serve to move toward the harmonization of studies**, we felt it was important to ensure that the protocols were as universal as possible and would work in many

labs and settings. For this reason we implemented a coauthor peer review process, that is, every chapter had to have one or several external coauthors from other laboratories. The roles of these coauthors are as follows:

1. To check whether the protocol would be applicable in other settings,
2. To check whether the steps and parameters are reasonable and their rationale clear and correct,
3. To add example protocols for additional lab settings.

3.1.3 *Avoid Magic Numbers*

Magic numbers—that is, numbers which are not explained and whose choice appears to be arbitrary—are not only a bad idea for software program codes but also for lab protocols. How often have we all read scientific publications and just could not figure out why the authors chose that particular set of measurement parameters! Was there a clever rationale behind their choice that sadly we didn't know, a lab tradition which might be reasonable but perhaps not applicable to our setting, or just a gut feeling of a student that didn't know how to make sense of all the different examples in the literature?

In any case, we wanted to reduce the magic numbers in our protocols to a minimum, so all authors were instructed to explain the rationales for their parameter choices in generic terms. If possible, advice for adapting them to other settings (other species, other field strengths) was to be given in the Notes section. Of course, example parameter sets are very valuable because they may allow readers to start straight away with a running protocol. They are also important in terms of harmonization, as mentioned. Therefore, examples of parameter sets for specific settings were requested, but separately in the Notes section, for example parameter sets for mice in a 7T MRI system and rats in a 9.4T system. For some techniques parameter sets for rats in a clinical 3T MRI system were also included.

3.1.4 *Describe the Pragmatic Way for Data Analyses*

It was important to us to dedicate separate chapters to the analyses because data analysis is an essential part of each study, but it is very rarely described in adequate detail. Statements like “ T_2^* was calculated by pixel-wise exponential fitting to the data using an in-house developed software written in MATLAB[®]” don't really help anyone who wants to learn how to analyze the data correctly. We are sure many of us have used similar statements in previous journal publications, but the fault is not always entirely ours: often there is simply no space (word limits!) and time to give a detailed description. Here, we wanted to make sure there was space (by having an entire chapter solely for the analysis) and time (by rewarding the effort and time spent in the detailed description with a first authorship).

It was key to present the most pragmatic approach to data analysis. What is the point in describing how to do your own code if there is established software available? So if analysis software existed, authors should describe how to get it and how to use it. Otherwise, the step-by-step instructions should focus on how to write a software program. Including pseudo code was encouraged, as well as providing downloadable code examples via GitHub or similar.

Finally, we asked to provide the readers with ideas on how to validate that their analyses give correct results. This could include for example a table of reference values or using synthetic test data.

3.1.5 Prevent Tunnel Vision—A Successful Study Needs More Than an MRI Protocol

Indeed, performing the actual MRI study is only part of the story. One must not forget that physiological MRI also requires consideration of many factors that are less important in anatomical imaging. Considerations about physiological monitoring, choosing the right animal model, measuring at the right time of the day, and using the most suitable anesthesia all have important implications.

For this reason, the first part of the book was dedicated to topics like animal models, preparation, monitoring and physiological interventions. We also questioned the need to always perform in vivo experiments on animals for training, development, and testing. Hence, one chapter provides a step-by-step protocol for the preparation of ex vivo rodent phantoms.

3.1.6 Embrace Competition—There Are Other Great Techniques Besides MRI

There are numerous questions for which it makes sense to go multimodal. Not only ultrasound and photoacoustic imaging but also invasive probes that provide quantitative physiological measurements are extremely valuable complements. Therefore, this book includes more than just MRI.

3.1.7 Make Access to This Information Free of Charge

Thanks to support from the COST Action PARENCHIMA (renalMRI.org) it was possible to make all chapters open access!

3.2 Content of the Book

An overview of topics covered by the *Springer Protocols* book on preclinical renal MRI is shown in Fig. 4. Part II contains four chapters about animal models, preparation, monitoring, physiological interventions, and rodent phantoms. In Part III there are 13 chapters describing the basic concepts of the techniques, followed by Part IV with 14 step-by-step protocols for conducting experiments. Finally, Part V contains ten chapters that address data analysis; this includes the subsegmentation of the kidney into morphology-based regions of interest or concentric objects, as well as image denoising using nonlocal means (NLM) filtering.

More detailed information on the book structure and chapters is provided below by listing all chapters in the format [chapter

Topics	Part I	Part II	Part III	Part IV	Part V
Recommendations for Preclinical Renal MRI	Intro				
Animal Models of Renal Pathophysiology and Disease		Animals			
Preparation & Monitoring of Animals		Animals			
Reversible (Patho)physiological Test Interventions		Animals			
Ex Vivo Rodent Phantoms for Testing and Training		Animals			
Quantitative Physiological Measurements by Invasive Probes			Concept	Exp. Prot.	
Ultrasound & Photoacoustic Imaging			Concept		
MRI Hardware Considerations			Concept		
Essential Practical Steps (Slice Planning, Shimming)				Exp. Prot.	
Kidney Volume Measurement				Exp. Prot.	
T₁ Mapping			Concept	Exp. Prot.	Analysis
T₂ and T₂* Mapping (BOLD)			Concept	Exp. Prot.	Analysis
Diffusion (DWI, ADC, IVIM)			Concept	Exp. Prot.	Analysis
Dynamic Contrast-Enhanced (DCE) -derived Perfusion & Filtration			Concept	Exp. Prot.	Analysis
Arterial Spin Labelling (ASL) for Perfusion Measurement			Concept	Exp. Prot.	Analysis
pH Imaging by Chemical Exchange Saturation Transfer (CEST)			Concept	Exp. Prot.	Analysis
Sodium (²³Na) MRI			Concept	Exp. Prot.	Analysis
Hyperpolarized Carbon (¹³C) MR			Concept	Exp. Prot.	Analysis
Fluorine (¹⁹F) MR Methods for Functional Imaging			Concept		Analysis
Inflammatory Cell Assessment by Fluorine MRI				Exp. Prot.	
Oxygen Tension & Blood Volume Measurement with Fluorine MRI				Exp. Prot.	
MR Elastography			Concept	Exp. Prot.	
Subsegmentation of the Kidney (ROIs, concentric objects)					Analysis
Image Denoising for Improved Parametric Mapping					Analysis
	1	4	13	14	11

Fig. 4 Overview of topics covered by the *Springer Protocols* book on preclinical renal MRI. There are 4 chapters about animal models, preparation, monitoring, physiological interventions, and rodent phantoms; 13 chapters describing the basic concepts of the techniques; 14 chapters with step-by-step protocols for experiments, and 11 data analysis protocols

number] [chapter title] [author list]. Each chapter is PubMed-listed as an entry in *Methods Mol Biol*.

3.2.1 Part I— Introduction

1. *Recommendations for Preclinical Renal MRI: A Comprehensive Open-Access Protocol Collection to Improve Training, Reproducibility, and Comparability of Studies* (Andreas Pohlmann, Susan J. Back, Andrea Fekete, Iris Friedli, Stefanie Hectors, Neil Peter Jerome, Min-Chi Ku, Dario Livio Longo, Martin Meier, Jason M. Millward, João S. Periquito, Erdmann Seeliger, Suraj D. Serai, Sonia Waiczies, Steven Sourbron, Christoffer Laustsen, and Thoralf Niendorf).

3.2.2 Part II— Animal Models, Preparation, Monitoring, and Physiological Interventions

1. *Animal Models of Renal Pathophysiology and Disease* (Adam Hosszu, Tamas Kaucsar, Erdmann Seeliger, and Andrea Fekete).
2. *Preparation and Monitoring of Small Animals in Renal MRI* (Tamas Kaucsar, Adam Hosszu, Erdmann Seeliger, Henning M Reimann, and Andrea Fekete).

3.2.3 Part III—Basic
Concepts of Measurement
Techniques

3. *Reversible (Patho)physiologically Relevant Test Interventions: Rationale and Examples* (Kathleen Cantow, Mechthild Ladwig-Wiegard, Bert Flemming, Andrea Fekete, Adam Hoszu, and Erdmann Seeliger).
4. *Preparation of Ex Vivo Rodent Phantoms for Developing, Testing, and Training MR Imaging of the Kidney and Other Organs* (Jason M. Millward, Joao Periquito, Paula Ramos Delgado, Christian Prinz, Thoralf Niendorf, and Sonia Waiczies).
5. *Quantitative Assessment of Renal Perfusion and Oxygenation by Invasive Probes: Basic Concepts* (Kathleen Cantow, Roger G. Evans, Dirk Grosenick, Thomas Gladytz, Thoralf Niendorf, Bert Flemming, and Erdmann Seeliger).
6. *Ultrasound and Photoacoustic Imaging of the Kidney: Basic Concepts and Protocols* (Sandra Meyer and Dieter Fuchs Martin Meier).
7. *Hardware Considerations for Preclinical Magnetic Resonance of the Kidney* (Paula Ramos Delgado, Ekkehard Küstermann, André Kühne, Thoralf Niendorf, Andreas Pohlmann, and Martin Meier).
8. *MRI Mapping of Renal T_1 : Basic Concepts* (Stefanie Hectors, Sabrina Doblas, Philippe Garteiser, Gwenaél Pagé, Bernard E. Van Beers, John C Waterton, and Octavia Bane).
9. *MRI Mapping of the Blood Oxygenation Sensitive Parameter T_2^* in the Kidney: Basic Concepts* (Lu-Ping Li, Bradley Hack, Erdmann Seeliger, and Pottumarthi V. Prasad).
10. *Renal Diffusion Weighted Imaging (DWI) for Apparent Diffusion Coefficient (ADC), Intravoxel Incoherent Motion (IVIM), and Diffusion Tensor Imaging (DTI): Basic Concepts* (Neil Peter Jerome, Anna Caroli, and Alexandra Ljimini).
11. *Dynamic Contrast Enhancement (DCE) MRI-Derived Renal Perfusion and Filtration: Basic Concepts* (Michael Pedersen, Pietro Irrera, Walter Dastrù, Frank G Zöllner, Kevin M Bennett, Scott C Beeman, G Larry Bretthorst, Joel R Garbow, and Dario Livio Longo).
12. *Noninvasive Renal Perfusion Measurement Using Arterial Spin Labeling (ASL) MRI: Basic Concepts* (Min-Chi Ku, María A Fernández-Seara, Frank Kober, and Thoralf Niendorf).
13. *Renal pH Imaging Using Chemical Exchange Saturation Transfer (CEST)-MRI: Basic Concepts* (Dario Livio Longo, Pietro Irrera, Lorena Consolino, Phillip Zhe Sun, and Michael T. McMahon).
14. *Sodium (^{23}Na) MRI of the Kidney: Basic Concepts* (James T. Grist, Esben Søvsø Hansen, Frank G. Zöllner, and Christoffer Laustsen).

3.2.4 Part IV—
Experimental Protocols

15. *Hyperpolarized Carbon (^{13}C) MRI of the Kidneys: Basic Concepts* (Cornelius von Morze, Galen D. Reed, Zhen J. Wang, Michael A. Ohliger, and Christoffer Laustsen).
16. *Functional Imaging Using Fluorine (^{19}F) MR Methods: Basic Concepts* (Sonia Waiczies, Christian Prinz, Ludger Starke, Jason M. Millward, Paula Ramos Delgado, Jens Rosenberg, Marc Nazaré, Helmar Waiczies, Andreas Pohlmann, and Thoralf Niendorf).
17. *MR Elastography of the Abdomen: Basic Concepts* (Suraj D. Serai and Meng Yin).
18. *Monitoring Renal Hemodynamics and Oxygenation by Invasive Probes: Experimental Protocol* (Kathleen Cantow, Mechthild Ladwig-Wiegard, Bert Flemming, Andreas Pohlmann, Thoralf Niendorf, and Erdmann Seeliger).
19. *Essential Practical Steps for MRI of the Kidney in Experimental Research* (Andreas Pohlmann, João dos Santos Periquito, and Thoralf Niendorf).
20. *Assessment of Renal Volume with MRI: Experimental Protocol* (Andreas Müller and Martin Meier).
21. *Experimental Protocols for MRI Mapping of Renal T_1* (Philippe Garteiser, Octavia Bane, Sabrina Doblás, Iris Friedli, Stefanie Hectors, Gwenaél Pagé, Bernard E. Van Beers, and John C. Waterton).
22. *Experimental Protocols for Mapping of Renal T_2^* and T_2* (Andreas Pohlmann, Kaixuan Zhao, Sean B. Fain, Pottumarthi V. Prasad, and Thoralf Niendorf).
23. *Renal MRI Diffusion: Experimental Protocol* (João S. Periquito, Martin Meier, Thoralf Niendorf, Andreas Pohlmann, and Neil Peter Jerome).
24. *Dynamic Contrast Enhanced (DCE) MRI-Derived Renal Perfusion and Filtration: Experimental Protocol* (Pietro Irrera, Lorena Consolino, Walter Dastrù, Michael Pedersen, Frank G. Zöllner, and Dario Livio Longo).
25. *Renal Blood Flow Using Arterial Spin Labeling (ASL) MRI: Experimental Protocol and Principles* (Kai-Hsiang Chuang, Martin Meier, María A Fernández-Seara, Frank Kober, and Min-Chi Ku).
26. *Renal pH Mapping Using Chemical Exchange Saturation Transfer (CEST) MRI: Experimental Protocol* (Kowsalya Devi Pavuluri, Lorena Consolino, Dario Livio Longo, Pietro Irrera, Phillip Zhe Sun, and Michael T. McMahon).

27. *Sodium (^{23}Na) MRI of the Kidney: Experimental Protocol* (James T. Grist, Esben Søvsø Hansen, Frank G. Zöllner, and Christoffer Laustsen).
28. *Hyperpolarized Carbon (^{13}C) MRI of the Kidney: Experimental Protocol* (Christoffer Laustsen, Cornelius von Morze, and Galen Reed).
29. *Fluorine (^{19}F) MRI for Assessing Inflammatory Cells in the Kidney: Experimental Protocol* (Min-Chi Ku, Adrian Schreiber, Paula Ramos Delgado, Philipp Boehm-Sturm, Ralph Kettritz, Thoralf Niendorf, Andreas Pohlmann, and Sonia Waiczies).
30. *Fluorine (^{19}F) MRI to Measure Renal Oxygen Tension and Blood Volume: Experimental Protocol* (Lingzhi Hu, Hua Pan, and Samuel A. Wickline).
31. *MR Elastography of the Abdomen: Experimental Protocols* (Suraj D. Serai and Meng Yin).
32. *Subsegmentation of the Kidney in Experimental MR Images Using Morphology-Based Regions of Interest or Multiple-Layer Concentric Objects* (Leili Riazzy, Bastien Milani, João S. Periquito, Kathleen Cantow, Thoralf Niendorf, Menno Pruijm, Erdmann Seeliger, and Andreas Pohlmann).
33. *Denoising for Improved Parametric MRI of the Kidney: Protocol for Nonlocal Means Filtering* (Ludger Starke, Karsten Tabelow, Thoralf Niendorf, and Andreas Pohlmann).
34. *Analysis Protocols for MRI Mapping of Renal T_1* (Philippe Garteiser, Gwenaël Pagé, Sabrina Doblas, Octavia Bane, Stefanie Hectors, Iris Friedli, Bernard E. Van Beers, and John C. Waterton).
35. *Analysis Protocols for MRI Mapping of the Blood Oxygenation Sensitive Parameters T_2^* and T_2 in the Kidney* (João S. Periquito, Ludger Starke, Carlota M. Santos, Andreia C. Freitas, Nuno Loução, Pablo García Polo, Rita G. Nunes, Thoralf Niendorf, and Andreas Pohlmann).
36. *Analysis of Renal Diffusion Weighted Imaging (DWI) Using Apparent Diffusion Coefficient (ADC) and Intravoxel Incoherent Motion (IVIM) Models* (Neil Peter Jerome and João S. Periquito).
37. *Analysis Protocol for Dynamic Contrast Enhanced (DCE) MRI of Renal Perfusion and Filtration* (Frank G. Zöllner, Walter Dastrù, Pietro Irrera, Dario Livio Longo, Kevin M Bennett, Scott C. Beeman, G. Larry Bretthorst, and Joel R. Garbow).
38. *Quantitative Analysis of Renal Perfusion by Arterial Spin Labeling* (Kai-Hsiang Chuang, Frank Kober, and Min-Chi Ku).

3.2.5 Part V—Protocols
for Advanced Analyses

39. *Analysis Protocol for the Quantification of Renal pH Using Chemical Exchange Saturation Transfer (CEST) MRI* (Hahn-sung Kim, Yin Wu, Daisy Villano, Dario Livio Longo, Michael T. McMahon, and Phillip Zhe Sun).
40. *Analysis Protocol for Renal Sodium (^{23}Na) MR Imaging* (James T. Grist, Esben Søvsø Hansen, Frank G. Zöllner, and Christoffer Laustsen).
41. *Analysis Methods for Hyperpolarized Carbon (^{13}C) MRI of the Kidney* (Galen D. Reed, Natalie J. Korn, Christoffer Laustsen, and Cornelius von Morze).
42. *Data Preparation Protocol for Low Signal-to-Noise Ratio Fluorine-19 MRI* (Ludger Starke, Thoralf Niendorf, and Sonia Waiczies).

3.3 Mission and Vision

The mission of this book was to bring together in one collection a comprehensive assortment of protocols, methods, techniques, and recommendations that can form a cornerstone of preclinical renal MR. This collection will serve as an excellent starting point for new researchers interested in breaking into the renal MR field. Expanding the number of researchers is absolutely critical for realizing the full potential of renal MR. By providing a set of carefully constructed protocols, we can avoid the waste of time, money and resources by no longer “re-inventing the wheel.” This collection will also greatly facilitate the harmonization of studies, and promote the sharing of data and results across multiple research groups, by getting everyone onto the “same page.” These efforts will help us break through those bottlenecks of inefficient learning and lack of standardization. The road ahead to fully realize the scientific and clinical possibilities of renal MR remains long, but the end result will be well worth the effort.

4 Notes

1. The search string for clinical renal MRI was as follows: (((“magnetic resonance imaging”[MeSH Terms]) AND “kidney”[MeSH Terms]) AND “humans “[MeSH Terms])). For preclinical renal MRI the last AND term was replaced with AND “animals”[MeSH Terms]) NOT “humans”[MeSH Terms]. For cardiac MRI the word “kidney” was replaced with the word “heart.” For restricting the search to papers with a main focus on MRI of the kidney/heart MeSH Terms was replaced with MeSH Major Topic: (((“magnetic resonance imaging”[MeSH Major Topic]) AND “kidney”[-MeSH Major Topic])) ... We used PubMed’s MeSH terms rather than free text search in the title/abstract to reduce the number of false positive/negative search results. However, a

drawback of using MeSH terms is that the indexing process takes rather long (several studies reported average delays of 100–150 days), but it may take significantly longer in some cases. For example, we found that several of our publications from 2017 and after were not yet MeSH indexed. Hence, the presented publication statistics can only be rough estimates of the true numbers of publications. Data for the year 2019 was excluded, because most PubMed listed publications on renal MRI had not been indexed with MeSH Terms yet.

2. We further exploited the publication lists obtained from the above PubMed's searches. We defined *active researchers* as anyone who published on renal MRI since 2015. After exporting the date-restricted publications lists from PubMed in XML format, we used an in-house developed software to extract the affiliations of the first and last authors—these research groups (departments of hospitals and academic institutions were counted individually) were considered to be *active players in renal MRI*. Duplicates were removed automatically (using Matlab's *unique()* function) and manually. The limitations mentioned in **Note 1** also apply here: due to the incomplete MeSH indexing the derived statistics are only rough estimates and data of 2019 could not be included.

Acknowledgments

This work was funded, in part (Thoralf Niendorf, Sonia Waiczies, Andreas Pohlmann, Erdmann Seeliger and Joao Periquito), by the German Research Foundation (Gefördert durch die Deutsche Forschungsgemeinschaft (DFG), Projektnummer 394046635, SFB 1365, RENOPROTECTION. Funded by the Deutsche Forschungsgemeinschaft (DFG, German Research Foundation), Project number 394046635, SFB 1365, RENOPROTECTION).

This chapter is based upon the work from COST Action PARENCHIMA, supported by European Cooperation in Science and Technology (COST). COST (www.cost.eu) is a funding agency for research and innovation networks. COST Actions help connect research initiatives across Europe and enable scientists to enrich their ideas by sharing them with their peers. This boosts their research, career, and innovation.

PARENCHIMA (renalMRI.org) is a community-driven Action in the COST program of the European Union, which unites more than 200 experts in renal MRI from 30 countries with the aim to improve the reproducibility and standardization of renal MRI biomarkers.

References

1. Dickerson EC, Dillman JR, Smith EA, DiPietro MA, Lebowitz RL, Darge K (2015) Pediatric MR urography: indications, techniques, and approach to review. *Radiographics* 35 (4):1208–1230. <https://doi.org/10.1148/rg.2015140223>
2. Khrichenko D, Darge K (2010) Functional analysis in MR urography—made simple. *Pediatr Radiol* 40(2):182–199. <https://doi.org/10.1007/s00247-009-1458-4>
3. National Kidney Foundation NY, USA. https://www.kidney.org/professionals/kdoqi/gfr_calculator. Accessed 07 Jan 2020
4. Porrini E, Ruggenenti P, Luis-Lima S, Carrara F, Jimenez A, de Vries APJ, Torres A, Gaspari F, Remuzzi G (2019) Estimated GFR: time for a critical appraisal. *Nat Rev Nephrol* 15(3):177–190. <https://doi.org/10.1038/s41581-018-0080-9>
5. Friedli I, Crowe LA, Berchtold L, Moll S, Hadaya K, de Perrot T, Vesin C, Martin PY, de Seigneux S, Vallee JP (2016) New magnetic resonance imaging index for renal fibrosis assessment: a comparison between diffusion-weighted imaging and T1 mapping with histological validation. *Sci Rep* 6:30088. <https://doi.org/10.1038/srep30088>
6. Pohlmann A, Arakelyan K, Hentschel J, Cantow K, Flemming B, Ladwig M, Waiczies S, Seeliger E, Niendorf T (2014) Detailing the relation between renal T2* and renal tissue pO₂ using an integrated approach of parametric magnetic resonance imaging and invasive physiological measurements. *Investig Radiol* 49(8):547–560. <https://doi.org/10.1097/RLI.0000000000000054>
7. SCMR (2018) The Society for Cardiovascular Magnetic Resonance—News 2018. scmr.org/page/CMR2018news. Accessed 07 Jan 2020
8. Pohlmann A, Seeliger E, Grosenick D, Waiczies S, Cantow K, Persson PB, Niendorf T (2017) 2nd International Scientific Symposium on Functional Renal Imaging: Where Physiology, Nephrology, Radiology and Physics Meet. www.mdc-berlin.de/renal. Accessed 07 Feb 2020
9. Francis S, Taal M, Selby N (2019) 3rd International Symposium on Functional Renal Imaging. www.nottingham.ac.uk/go/3rdrenalMRI. Accessed 07 Feb 2020
10. SpringerNature Springer Protocols. www.springernature.com/gp/librarians/products/product-types/database/springerprotocols. Accessed 10 Feb 2020
11. Dalkey N, Helmer O (1963) An experimental application of the DELPHI method to the use of experts. *Manag Sci* 9(3):458–467. <https://doi.org/10.1287/mnsc.9.3.458>
12. Mendichovszky I, Pullens P, Dekkers I, Nery F, Bane O, Pohlmann A, de Boer A, Ljimini A, Odudu A, Buchanan C, Sharma K, Laustsen C, Hartevelde A, Golay X, Pradosa I, Alsop D, Fain S, Caroli A, Prasad P, Francis S, Sigmund E, Fernandez-Seara M, Sourbron S (2020) Technical recommendations for clinical translation of renal MRI: a consensus project of the cooperation in science and technology action PARENCHIMA. *MAGMA* 33 (1):131–140. <https://doi.org/10.1007/s10334-019-00784-w>
13. Nery F, Buchanan CE, Hartevelde AA, Odudu A, Bane O, Cox EF, Derlin K, Gach HM, Golay X, Gutberlet M, Laustsen C, Ljimini A, Madhuranthakam AJ, Pedrosa I, Prasad PV, Robson PM, Sharma K, Sourbron S, Taso M, Thomas DL, Wang DJJ, Zhang JL, Alsop DC, Fain SB, Francis ST, Fernandez-Seara MA (2020) Consensus-based technical recommendations for clinical translation of renal ASL MRI. *MAGMA* 33 (1):1–21. <https://doi.org/10.1007/s10334-019-00800-z>
14. Bane O, Mendichovszky IA, Milani B, Dekkers IA, Deux JE, Eckerbom P, Grenier N, Hall ME, Inoue T, Laustsen C, Lerman LO, Liu C, Morrell G, Pedersen M, Pruijm M, Sadowski EA, Seeliger E, Sharma K, Thoeny H, Vermathen P, Wang ZJ, Serafin Z, Zhang JL, Francis ST, Sourbron S, Pohlmann A, Fain SB, Prasad PV (2020) Consensus-based technical recommendations for clinical translation of renal BOLD MRI. *MAGMA* 33(1):199–215. <https://doi.org/10.1007/s10334-019-00802-x>
15. Ljimini A, Caroli A, Laustsen C, Francis S, Mendichovszky IA, Bane O, Nery F, Sharma K, Pohlmann A, Dekkers IA, Vallee JP, Derlin K, Notohamiprodjo M, Lim RP, Palmucci S, Serai SD, Periquito J, Wang ZJ, Froeling M, Thoeny HC, Prasad P, Schneider M, Niendorf T, Pullens P, Sourbron S, Sigmund EE (2020) Consensus-based technical recommendations for clinical translation of renal diffusion-weighted MRI.

- MAGMA 33(1):177–195. <https://doi.org/10.1007/s10334-019-00790-y>
16. Dekkers IA, de Boer A, Sharma K, Cox EF, Lamb HJ, Buckley DL, Bane O, Morris DM, Prasad PV, Semple SIK, Gillis KA, Hockings P, Buchanan C, Wolf M, Laustsen C, Leiner T, Haddock B, Hoogduin JM, Pullens P, Sourbron S, Francis S (2020) Consensus-based technical recommendations for clinical translation of renal T1 and T2 mapping MRI. MAGMA 33(1):163–176. <https://doi.org/10.1007/s10334-019-00797-5>

Open Access This chapter is licensed under the terms of the Creative Commons Attribution 4.0 International License (<http://creativecommons.org/licenses/by/4.0/>), which permits use, sharing, adaptation, distribution and reproduction in any medium or format, as long as you give appropriate credit to the original author(s) and the source, provide a link to the Creative Commons license and indicate if changes were made.

The images or other third party material in this chapter are included in the chapter's Creative Commons license, unless indicated otherwise in a credit line to the material. If material is not included in the chapter's Creative Commons license and your intended use is not permitted by statutory regulation or exceeds the permitted use, you will need to obtain permission directly from the copyright holder.



Part II

Animal Models, Preparation, Monitoring, and Physiological Interventions

INDEX

A

- Acute kidney injury (AKI) 5, 9, 28, 31–36, 46, 51, 57, 60, 62, 69, 89, 90, 101, 164–166, 181, 218, 221, 231, 241, 249, 250, 257, 263, 264, 274, 282, 327, 328, 403, 473, 539, 584
- ADC, *see* Apparent diffusion coefficient (ADC)
- AKI, *see* Acute kidney injury (AKI)
- Anesthesia 15, 34, 46–52, 77, 78, 90, 111, 121, 122, 125, 126, 179, 221, 310, 318, 329, 336, 344, 350, 353, 354, 371, 372, 375, 400, 405, 408, 420, 421, 424, 431, 435, 436, 438, 444–446, 448, 457, 462, 465, 468, 474, 482, 497, 500, 502, 511, 523, 584, 656, 663, 664
- Animal models 15, 16, 28–34, 36–38, 58, 90, 110, 111, 122, 131, 164, 165, 206, 218, 221, 231, 232, 236, 273, 337, 370, 384, 389, 403, 497, 511, 584
- Apparent diffusion coefficient (ADC) 6, 9, 17, 19, 187–200, 420, 422–424, 426, 611–633
- Arterial spin labeling (ASL) 6, 10, 17–19, 132, 146, 165, 218, 221, 230, 231, 234, 237, 358, 429, 443–452, 550, 655–665
- ASL, *see* Arterial spin labelling (ASL)

B

- B₀ 76, 132–136, 138, 139, 146, 148, 149, 151, 158, 159, 164, 178, 235, 236, 249, 259, 291, 292, 317, 360, 362, 363, 366, 367, 378, 386, 389, 393, 394, 398, 406, 408, 412, 416, 424, 427, 451, 458, 463, 465, 466, 469, 488–490, 498, 499, 530, 537, 597, 668, 670, 673–675, 678, 695
- Blood flow 6, 18, 33, 35, 36, 48, 49, 51, 58, 59, 90, 93–96, 98, 102, 110, 111, 116–119, 122, 123, 125, 128, 171–173, 206, 210, 216–218, 220, 229–231, 234, 236, 268, 282, 315, 316, 328, 330, 331, 337, 338, 340, 345, 363–365, 403, 443–452, 481, 539, 541, 644, 650, 651, 656, 663, 699, 707
- Blood oxygenation level dependent MRI (BOLD) 10, 117, 132, 133, 140, 148, 264, 404, 429, 512, 515, 522, 549, 592
- BOLD, *see* Blood oxygenation level dependent MRI (BOLD)

C

- Carbon (¹³C) 18–20, 61, 99, 481–490, 697–707
- CEST, *see* Chemical exchange saturation transfer (CEST)
- Chemical exchange saturation transfer (CEST) 17, 18, 20, 241–252, 429, 455–469, 550, 667–683
- Chronic kidney disease (CKD) 5–7, 9, 36–39, 45, 57, 89, 90, 116, 182, 198, 221, 263, 264, 319, 327, 328, 403, 456, 496, 520, 544
- CKD, *see* Chronic kidney disease (CKD)
- Contrast agents (CAs) 36, 58, 84, 111, 117, 122, 125, 126, 128, 164, 178, 206–210, 212, 213, 215, 219, 221, 222, 236, 243–248, 264, 280, 284, 289, 349, 384, 390, 392, 394, 430, 431, 434, 436, 443, 456, 457, 460–465, 468, 483, 496, 510, 514, 637, 667–669, 679, 683, 698, 700, 707

D

- DCE, *see* Dynamic contrast-enhanced (DCE)
- Deconvolution 62, 218, 221, 640, 641, 644, 700, 701, 708
- Diffusion 17–19, 60, 65, 91, 172, 179, 187–201, 264, 289, 309, 358, 404, 405, 419–427, 429, 515, 522, 550, 566, 592, 607, 612, 613, 615, 617–621, 624, 628–631, 633
- Diffusion-tensor imaging (DTI) 17
- Diffusion-weighted imaging (DWI) 10, 17, 19, 132, 140, 146, 187, 341, 355, 358, 419–422, 424–425, 429, 550, 611
- DNP, *see* Dynamic nuclear polarization (DNP)
- Doppler 95, 116–119, 123, 125, 128, 231, 316
- DTI, *see* Diffusion-tensor imaging (DTI)
- DWI, *see* Diffusion-weighted imaging (DWI)
- Dynamic contrast-enhanced (DCE) 17–19, 132, 146, 159, 205–221, 384, 429–438, 637–651
- Dynamic nuclear polarization (DNP) 269

F

- Fibrosis 6, 28, 35–38, 46, 157, 164–166, 173, 181, 188, 198, 206, 230, 268, 302, 304, 305, 308–312, 314–319, 383, 386, 520–523, 526, 541, 544, 550, 695

Filtration 17–19, 28, 33, 172,
 177, 205–223, 230, 242, 250, 283, 384,
 429–439, 444, 455, 510, 637–651, 673, 680, 700
 Fitting 14, 162, 175, 193, 195,
 196, 215, 378, 390, 391, 394, 414, 420, 450,
 489, 513, 565, 577, 578, 581–588, 593, 594,
 598, 599, 601–605, 608, 609, 613, 615–624,
 626, 628, 630–632, 639, 640, 645, 655–660,
 662–664, 668–672, 674, 676, 680, 690,
 692–694, 707–709
 Fluorine (¹⁹F) 18, 19, 495–505, 509–516,
 711–713, 715, 716, 718

G

GFR, *see* Glomerular filtration rate (GFR)
 Glomerular filtration rate (GFR) 5, 32, 35,
 36, 38, 59, 60, 132, 205, 208, 218, 220–222,
 229, 263, 268, 270, 370, 481, 639, 705–707

H

Hardware 7, 13, 17, 76, 79, 81, 132,
 147, 151, 191, 233, 258, 280, 290–293, 308,
 330, 350, 351, 372, 405, 421, 431, 445, 457,
 475, 479, 483, 498, 511, 521, 525–528, 537,
 539, 562, 566, 567, 581, 585
 Hyperoxia 65, 102, 178, 181,
 329, 335, 337, 341, 404, 405, 411, 449, 451,
 511, 525, 663
 Hyperpolarization 146, 269
 Hypoxia 35, 47, 57, 60, 65, 89,
 92, 93, 100–102, 140, 173, 174, 178–182, 237,
 281, 284, 309, 327, 329, 335, 337, 341, 378,
 403–406, 411, 413, 449, 511, 522, 525, 608

L

Longitudinal relaxation time, *see* T₁

I

Inflammation 28, 35, 36, 46, 157,
 164, 166, 173, 188, 231, 281, 284, 285, 290,
 308, 383, 386, 455, 495–500, 502, 503, 521,
 522, 712
 Intravoxel incoherent motion (IVIM) 17, 19,
 194, 195, 420, 422, 424, 612, 620–624
 Invasive probes 6, 15, 17, 18, 62,
 65, 89–103, 181, 327–345, 363
 Iopamidol 243, 245, 246, 250,
 456, 457, 459, 461, 462, 464, 465, 668, 670,
 671, 673–679
 Ischemia reperfusion injury (IRI) 28, 31, 33,
 34, 36, 47–52, 165, 250
 IVIM, *see* Intravoxel incoherent motion (IVIM)

M

Magnetic field strength, *see* B₀
 Magnetic resonance elastography (MRE) 302,
 519–530, 532–534, 537–539, 544, 545
 Mouse 9, 14, 30–32, 34, 36–39,
 52, 76–79, 83, 84, 100, 101, 121, 124, 135, 140,
 142, 143, 147, 149, 150, 161, 164–166, 180,
 216, 221, 231, 233, 235–237, 243, 245, 249,
 250, 317, 330, 350, 351, 360, 366, 371, 372,
 378, 379, 384, 397–400, 404, 405, 407, 413,
 415, 420, 421, 425–427, 430, 431, 434–436,
 438, 444, 445, 447, 448, 451, 452, 456, 457,
 460, 462, 466–469, 475, 482, 483, 490,
 497–503, 505, 510, 515, 522, 523, 525, 527,
 533, 534, 551, 562, 584, 643, 676, 712
 MRE, *see* Magnetic resonance elastography (MRE)

N

Nanoparticles (NPs) 62, 126, 280,
 281, 283, 287–289, 496, 497, 500, 502, 505,
 510, 512, 712

O

Oxygenation 6, 10, 17–19, 28,
 46–48, 57–62, 65, 67, 69, 89–103, 132, 133,
 146, 171–183, 236, 242, 281, 282, 310,
 327–345, 349, 372, 403–416, 429, 430, 443,
 499, 512, 522, 549, 591–609

P

Perfluorocarbon (PFC) 282, 496, 498,
 499, 510–516
 Perfusion 6, 10, 17–19, 28, 35,
 46, 47, 58–60, 62, 65, 77–80, 89–103, 111, 117,
 122, 125, 128, 132, 140, 146, 165, 172, 173,
 178, 188, 191, 194, 195, 205–222, 229–237,
 242, 281, 282, 284, 315–316, 318, 328–330,
 349, 350, 358, 363, 364, 384, 395, 396, 420,
 424, 429–438, 443–445, 448–452, 455, 456,
 460, 461, 463, 465, 468, 485, 510, 512, 549,
 629, 632, 637–651, 655–657, 660–665, 699,
 700, 703
 pH 18, 147, 178, 242, 281,
 429, 455, 550, 667
 Phantoms 15, 17, 75–85, 262, 385, 399, 406,
 432, 462, 468, 474, 477, 480, 482, 483, 486,
 489, 490, 503, 512, 516, 530, 533, 571–573,
 584, 606, 675, 680, 689–692, 698, 720, 721
 pH imaging 17, 241–250, 456, 457, 668, 680
 Photoacoustic imaging (PA) 15, 17, 109–128
 Preclinical models 110, 149, 164, 167, 700
 Pulse sequence, *see* Sequence

R

Radio frequency coils (RF coils) 139–143, 290, 330
 Rat 9, 30, 31, 34, 35, 38, 39, 62, 65, 76–79, 81, 84, 101, 102, 142, 143, 149, 150, 164, 166, 174, 179, 181, 182, 221, 231, 236, 250, 259, 270, 273, 283, 285, 330, 332, 333, 335–337, 339, 340, 351, 354, 360, 361, 363–366, 371, 372, 378, 379, 396–399, 410, 413–415, 426, 427, 448, 451, 467, 477, 479, 488–490, 551, 571, 572, 607, 676, 680, 700, 703, 707
 Region-of-interest (ROI) 412, 538, 539, 551, 555, 581, 597–599, 601, 605, 608, 642, 643, 645, 648–651, 690, 691, 694, 700, 721
 Responsive contrast agent 251
 RF coils, *see* Radio frequency coils (RF coils)
 ROI, *see* Region-of-interest (ROI)

S

Segmentations 263, 373–375, 394, 550–562, 605, 638, 639, 663, 669, 695
 Sequence 4, 75, 81, 83, 84, 95, 134, 138, 149, 159–163, 175, 177, 188, 199, 200, 207–209, 211–213, 233, 234, 259, 261, 264, 280, 289, 290, 292, 303–305, 312, 351–353, 358, 363, 371–376, 378–380, 384–387, 389, 391–396, 398–400, 406–409, 412, 414, 420–422, 424–426, 430, 432, 433, 435, 438, 445, 447–449, 452, 458–461, 463–465, 467, 475–479, 482–489, 498, 499, 501, 503, 511, 512, 515, 516, 521, 523, 525–528, 532, 534, 539, 544, 571, 592, 601, 603, 608, 655, 689, 700
 Shimming 13, 76, 133, 138, 139, 151, 234, 337, 350, 351, 353, 358–363, 376, 380, 393, 398, 400, 409, 411, 416, 424, 427, 435, 448, 451, 452, 463, 468, 469, 486, 490, 501, 505, 531
 Sodium (²³Na) 17, 19, 20, 59, 67, 69, 146, 158, 257–264, 399, 429, 473–480, 550, 689–696
 Spin-lattice relaxation time, *see* T1
 Spin-spin relaxation time, *see* T2, T2*
 Stiffness 302–305, 308–312, 314–319, 519, 520, 522, 523, 525–530, 533, 535, 536, 538, 539, 541, 544

T

T₁ 4, 132, 157, 188, 206, 235, 259, 269, 279, 304, 340, 349, 374, 383, 406, 430, 444, 475, 483, 498, 510, 546, 573, 607, 631, 649, 688, 692
 T₂ 4, 5, 11, 12, 18, 19, 62, 132, 146, 160, 163, 164, 178, 188, 192, 193, 195, 199, 210, 235, 262, 270, 280, 289, 290, 304, 357, 358, 371–378, 380, 386, 403–416, 430, 432, 437, 445, 446, 448, 452, 489, 499, 512, 550, 577, 611, 637, 655, 694, 698
 T₂* 5, 47, 58, 90, 132, 175, 206, 235, 261, 283, 304, 329, 349, 375, 397, 404, 445, 483, 498, 516, 538, 549, 565, 591, 611, 637, 676, 690, 701
 Test interventions 6, 17, 57–69, 102, 179, 328, 329, 332, 335, 337, 341
 Time-of-flight angiography (TOF) 350, 352, 363–365
 Tissue oxygenation 6, 28, 46, 61, 90, 101, 117, 172, 281, 289, 329, 330, 403
 T₁ mapping 157–167, 210, 211, 349, 383–400, 432, 433, 435, 436, 449, 450, 513, 550, 577, 578, 583, 588, 638–640, 651, 656–660, 663, 664
 T₂ mapping 406, 407, 409–414, 573, 593, 598–603, 608, 702, 704
 T₂* mapping 133, 146, 171–182, 261, 340, 343, 357, 359, 405–413, 549, 571, 574, 599, 690–691
 TOF, *see* Time-of-flight angiography (TOF)
 Toft's model 640, 641

U

Ultrasound imaging (US) 109–111, 116, 117, 122, 125, 372

V

Volume 9, 18, 19, 31, 47, 49, 60–62, 67, 78, 95, 99, 101, 102, 111, 116, 117, 119, 122, 123, 128, 139, 140, 142, 143, 147, 150, 176–178, 217, 221, 229, 231–234, 258, 259, 261, 262, 282, 290, 316, 330, 335, 337, 360–363, 366, 369–381, 384, 396, 398–400, 404, 413, 431, 432, 436, 438, 443, 445, 451, 468, 474, 475, 483, 489, 498, 499, 501, 502, 505, 509–517, 525, 529, 538, 539, 550, 551, 565, 566, 608, 626, 629, 639, 644, 680, 689, 705, 706