



Deposited via The University of Sheffield.

White Rose Research Online URL for this paper:

<https://eprints.whiterose.ac.uk/id/eprint/170497/>

Version: Published Version

---

**Article:**

Moisse, M., Zwamborn, R.A.J., Vugt, J. et al. (2021) The effect of SMN gene dosage on ALS risk and disease severity. *Annals of Neurology*, 89 (4). pp. 686-697. ISSN: 0364-5134

<https://doi.org/10.1002/ana.26009>

---

**Reuse**

This article is distributed under the terms of the Creative Commons Attribution (CC BY) licence. This licence allows you to distribute, remix, tweak, and build upon the work, even commercially, as long as you credit the authors for the original work. More information and the full terms of the licence here:

<https://creativecommons.org/licenses/>

**Takedown**

If you consider content in White Rose Research Online to be in breach of UK law, please notify us by emailing [eprints@whiterose.ac.uk](mailto:eprints@whiterose.ac.uk) including the URL of the record and the reason for the withdrawal request.

# The Effect of *SMN* Gene Dosage on ALS Risk and Disease Severity

Matthieu Moisse, PhD <sup>1,2</sup> Ramona A. J. Zwamborn, MSc,<sup>3</sup> Joke van Vugt, PhD <sup>3</sup>,  
 Rick van der Spek, MD <sup>3</sup> Wouter van Rheenen, PhD <sup>3</sup> Brendan Kenna, PhD,<sup>3</sup>  
 Kristel Van Eijk, PhD,<sup>3</sup> Kevin Kenna, PhD,<sup>3</sup> Philippe Corcia, MD <sup>4,5</sup>  
 Philippe Couratier, MD <sup>4</sup> Patrick Vourc'h, PhD <sup>5</sup> Orla Hardiman, MD <sup>6</sup>,  
 Russell McLaughlin, PhD <sup>7</sup> Marc Gotkine, MBBS <sup>8</sup> Vivian Drory, MD,<sup>9</sup> Nicola Ticozzi, MD  
<sup>10,11</sup> Vincenzo Silani, MD <sup>10,11</sup> Mamede de Carvalho, MD <sup>12</sup>  
 Jesús S. Mora Pardina, MD <sup>13</sup> Monica Povedano, MD,<sup>14</sup> Peter M. Andersen, MD <sup>15</sup>,  
 Markus Weber, MD,<sup>16</sup> Nazli A. Başak, PhD <sup>17</sup> Xiao Chen, PhD <sup>18</sup>,  
 Michael A. Eberle, PhD <sup>18</sup> Ammar Al-Chalabi, PhD <sup>19</sup> Chris Shaw, MD,<sup>19</sup>  
 Pamela J. Shaw, MD <sup>20</sup> Karen E. Morrison, MD <sup>21</sup> John E. Landers, PhD <sup>22</sup>,  
 Jonathan D. Glass, MD <sup>23</sup> Wim Robberecht, MD,<sup>1,24</sup> Michael van Es, MD <sup>3</sup>,  
 Leonard van den Berg, MD <sup>3</sup> Jan Veldink, MD <sup>3†</sup> and Philip Van Damme, MD, <sup>1,2,24†</sup>  
 Project MinE Sequencing Consortium<sup>25</sup>

**Objective:** The role of the survival of motor neuron (*SMN*) gene in amyotrophic lateral sclerosis (ALS) is unclear, with several conflicting reports. A decisive result on this topic is needed, given that treatment options are available now for *SMN* deficiency.

**Methods:** In this largest multicenter case control study to evaluate the effect of *SMN1* and *SMN2* copy numbers in ALS, we used whole genome sequencing data from Project MinE data freeze 2. *SMN* copy numbers of 6,375 patients with ALS and 2,412 controls were called from whole genome sequencing data, and the reliability of the calls was tested

View this article online at [wileyonlinelibrary.com](http://wileyonlinelibrary.com). DOI: 10.1002/ana.26009

Received Sep 11, 2020, and in revised form Dec 29, 2020. Accepted for publication Dec 30, 2020.

Address correspondence to Prof. Philip Van Damme, Neurology Department, University Hospitals Leuven, Herestraat 49, 3000 Leuven, Belgium.

E-mail: [philip.vandamme@uzleuven.be](mailto:philip.vandamme@uzleuven.be)

<sup>†</sup>These authors contributed equally to this work.

From the <sup>1</sup>Departments of Neurosciences, Experimental Neurology, and Leuven Brain Institute (LBI), KU Leuven – University of Leuven, Leuven, Belgium;

<sup>2</sup>Laboratory of Neurobiology, VIB, Center for Brain and Disease Research, Leuven, Belgium; <sup>3</sup>Department of Neurology, UMC Utrecht Brain Center, Utrecht University, Utrecht, The Netherlands; <sup>4</sup>Centre SLA, CHRU de Tours, Tours, France; <sup>5</sup>UMR 1253, iBrain, Université de Tours, Inserm, Tours, France;

<sup>6</sup>Academic Unit of Neurology, Trinity College Dublin, Trinity Biomedical Sciences Institute, Dublin, Republic of Ireland; <sup>7</sup>Complex Trait Genomics Laboratory, Smurfit Institute of Genetics, Trinity College Dublin, Dublin, Republic of Ireland; <sup>8</sup>The Agnes Ginges Center for Human Neurogenetics, Hadassah-Hebrew University Medical Center, Jerusalem, Israel; <sup>9</sup>Department of Neurology, Tel-Aviv Sourasky Medical Centre, Tel Aviv, Israel;

<sup>10</sup>Department of Neurology, Stroke Unit and Laboratory of Neuroscience, IRCCS Istituto Auxologico Italiano, Milano, Italy; <sup>11</sup>Department of Pathophysiology and Transplantation, “Dino Ferrari” Center, Università degli Studi di Milano, Milan, Italy; <sup>12</sup>Instituto de Fisiologia, Instituto de Medicina Molecular, Faculdade de Medicina, Universidade de Lisboa, Lisbon, Portugal; <sup>13</sup>ALS Unit, Hospital San Rafael, Madrid, Spain; <sup>14</sup>Servei de Neurologia, HUB-IDIBELL, Barcelona, Spain; <sup>15</sup>Department of Clinical Science, Neurosciences, Umeå University, Umeå, Sweden; <sup>16</sup>Neuromuscular Diseases Unit/ALS Clinic, St. Gallen, Switzerland; <sup>17</sup>Koç University, School of Medicine, KUTTAM-NDAL, Istanbul, Turkey; <sup>18</sup>illumina Inc., San Diego, CA; <sup>19</sup>Department of Basic and Clinical Neuroscience, Maurice Wohl Clinical Neuroscience Institute, King’s College London, London, UK; <sup>20</sup>Sheffield Institute for Translational Neuroscience (SITraN), University of Sheffield, Sheffield, UK; <sup>21</sup>School of Medicine, Dentistry, and Biomedical Sciences, Queen’s University Belfast, Belfast, UK; <sup>22</sup>Department of Neurology, University of Massachusetts Medical School, Worcester, MA; <sup>23</sup>Department Neurology, Emory University School of Medicine, Atlanta, GA; <sup>24</sup>Department of Neurology, University Hospitals Leuven, Leuven, Belgium; and <sup>25</sup>Project MinE Sequencing Consortium, Utrecht, The Netherlands

Additional supporting information can be found in the online version of this article.

with multiplex ligation-dependent probe amplification data.

**Results:** The copy number distribution of *SMN1* and *SMN2* between cases and controls did not show any statistical differences (binomial multivariate logistic regression *SMN1*  $p = 0.54$  and *SMN2*  $p = 0.49$ ). In addition, the copy number of *SMN* did not associate with patient survival (Royston-Parmar; *SMN1*  $p = 0.78$  and *SMN2*  $p = 0.23$ ) or age at onset (Royston-Parmar; *SMN1*  $p = 0.75$  and *SMN2*  $p = 0.63$ ).

**Interpretation:** In our well-powered study, there was no association of *SMN1* or *SMN2* copy numbers with the risk of ALS or ALS disease severity. This suggests that changing *SMN* protein levels in the physiological range may not modify ALS disease course. This is an important finding in the light of emerging therapies targeted at *SMN* deficiencies.

ANN NEUROL 2021;00:1–12

**A**myotrophic lateral sclerosis (ALS) and spinal muscular atrophy (SMA) are both motor neuron disorders leading to progressive muscle weakness and death of patients, mostly due to respiratory failure.<sup>1,2</sup>

ALS is an adult-onset disease with an estimated lifetime risk of 1 in 400. Approximately 50% of patients die within 3 to 5 years after onset, but there is a high level of variability between patients in age at onset and progression rate, with 5% of the patients surviving more than 10 years.<sup>3,4</sup> Patients are typically categorized into familial ALS representing 10 to 20% of patients and sporadic ALS. Genetically, ~66% of familial and ~10% sporadic patients are explained by a mutation in one of the ~25 genes that have been associated with ALS, with mutations in *SOD1*, *TARDBP*, *FUS*, and *C9orf72* being the most common causes.<sup>1</sup> To date, several clinical and genetic factors have been put forward as disease modifiers, for example, sex, age at onset, site of onset, diagnostic delay, presence of frontotemporal dementia, *C9orf72* repeat expansions and SNPs in or near *UNC13A*, and *CAMTA1*.<sup>5</sup> In addition, copy number (CN) variation in *SMN*, the gene that is deleted in childhood onset SMA, has been extensively studied as disease modifier with many conflicting reports.<sup>6–15</sup>

SMA is a monogenic disease usually caused by a homozygous loss of *SMN1* and modulated by the number of *SMN2* copies present.<sup>16</sup> In ~95% of the cases, both copies of *SMN1* are missing or affected by a gene conversion, the remaining ~5% of the patients have a mutation on their remaining copy of *SMN1*.<sup>17</sup> The *SMN* genes are located on q13.2 of chromosome 5, a locus that underwent an inverted duplication of about 500 kb.<sup>18</sup> *SMN2* is almost identical to *SMN1*, except for a few point mutations and small insertions and deletions, one of which is located at the splice junction of exon 7 and causes exon 7 skipping.<sup>18</sup> As a consequence, *SMN2* mainly codes for a non-fully functional *SMN* protein.<sup>16</sup> Recently, 3 treatment options became available that aim to increase full length functional *SMN* protein levels. The first one is a multi-dose antisense oligonucleotide therapy named nusinersen, the second is the single dose gene replacement therapy onasemnogene abeparvovec, and the third option is

experimental compound therapies, aiming to increase the expression of the *SMN* locus.<sup>19,20</sup> Nusinersen works through blocking the binding of heterogeneous nuclear ribonucleoproteins (hnRNPs) at a splicing silencer element, named ISS-N1, leading to exon 7 inclusion and increases full length *SMN* protein levels.<sup>2,19</sup> Onasemnogene abeparvovec adds a functional copy of *SMN1* to the genome using a self-complementary adeno-associated viral serotype 9, increasing the *SMN* protein levels.<sup>20</sup>

These recent therapeutic breakthroughs in SMA could have large consequences for ALS as well, if a convincing role for *SMN* in ALS could be established.

Previous studies investigating the effect of the CNs of *SMN* on disease risk and progression of ALS have reported conflicting results.<sup>6–15</sup> According to some studies, loss of *SMN1* is associated with ALS risk,<sup>8,9,12</sup> whereas others found that duplication of *SMN1* associated with ALS risks.<sup>6,7,11–13</sup> Others did not find any association between ALS and the number of *SMN1* copies.<sup>10,14,15</sup> Likewise for *SMN2*, some found a homozygous deletion to be protective,<sup>8</sup> whereas others found the deletion to be more frequent in ALS and reducing the survival time of these patients.<sup>9,10,15</sup> In addition, here, several other publications failed to find any association.<sup>6,7,11–14</sup>

In this large study, we aimed to use the whole genome sequencing (WGS) data from Project MinE, which contains 6,375 patients with ALS and 2,412 controls to evaluate the effect of *SMN* CNs in the context of ALS risk and clinical phenotype.<sup>21</sup> This is the largest ALS cohort in which *SMN* genes have been analyzed in the hope to find a definitive answer.

## Methods

### Experimental Design

This WGS case-control study uses data freeze 2 from Project MinE, which contains a total of 9,600 whole genomes sequencing data from ALS cases and age-matched and sex-matched control samples.<sup>21</sup> Samples were mostly of people of European descent and collected from 17 centers across 13 countries: Belgium, Switzerland, Spain, France, United

Kingdom, Ireland, Israel, Italy, The Netherlands, Portugal, Sweden, Turkey, and the United States.

Patients were diagnosed with ALS in their respective centers, mainly using the El-Escorial criteria. Clinical information was collected from each center and centrally harmonized and passed through quality control. For patients who are still alive, a survival update was requested on a yearly basis. All participants signed an informed consent at their respective centers. This study was approved by the respective ethics committees of the participating centers.

### Sequencing, Variant Calling, and Quality Control

The first batch of 2,250 cases and control samples were sequenced on the Illumina HiSeq 2000 platform. All remaining 7,350 cases and controls were sequenced on the Illumina HiSeq X platform. All samples were sequenced to ~35X coverage with 100 bp reads and ~25X coverage with 150 bp reads for the HiSeq 2000 and HiSeq X, respectively. Both sequencing sets used polymerase chain reaction (PCR)-free library preparation. Samples were also genotyped on the Illumina 2.5 M array. Sequencing data were then aligned to GRCh37 using the iSAAC Aligner, and variants called using the iSAAC variant caller; both the aligner and caller are standard to Illumina's aligning and calling pipeline.

Per individual, gVCFs were merged using the Illumina gvcfgenotyper tool version 2018.10.15 (<https://github.com/Illumina/gvcfgenotyper>). Sites with a genotype quality (GQ) < 10 were set to missing and single nucleotide variations (SNVs) and indels with quality (QUAL) scores < 20 and < 30, respectively, were removed. Biological sex was inferred from the average coverage of chrY and chrX compared with the average coverage of the autosomal chromosomes.

Next sample-level quality control was performed using the following filters at sample level: (1) more than 2% of the variant missing, (2) abnormal value of the autosomal homozygous genotype score calculated by Plink 1.9  $|F| > 0.10$ , (3) aberrant transition/transversion ratio, defined as  $\pm 6$  standard deviations (SDs), (4) aberrant number of variants, defined as  $\pm 6$  SDs, (5) aberrant number of singletons, defined as  $\pm 6$  SDs, (6) aberrant number of indels, defined as  $\pm 6$  SDs, and (7) an inconsistency between the inferred and reported sex.

Variants in the merged vcf file were first decomposed and normalized using the corresponding commands in vt (version 2015.11.10) and then annotated by VEP (version 96), information from public databases dbNSFP (version 3.5a), dbSNP (version 1.1), ExAC (version 0.3), gnomAD exome (version 2.1), ESP (ESP6500SI-V2), 1,000 genomes (phase 3), dbSNP (version 151), and

clinvar (version 20190513) were added using vcfanno (version 0.3.1). Annotated vcf files were loaded into gmini (version 0.30.1) and filtered for exonic variants, excluding synonymous variants not near splice sites, with an allele frequency of maximum 2%. Resulting variants in *SOD1*, *FUS*, and *TARDBP* were further inspected using the ACMG guidelines on the varsome platform.<sup>22</sup> Pathogenic, likely pathogenic, and variants of unknown significance with some evidence toward pathogenicity were retained for further analysis. *C9ORF72* expansions were detected using Expansion Hunter (version 3.1.2) from Illumina.<sup>23</sup>

### SMN Calling

To call the CNs of *SMN* from WGS data we used the recently published SMNCopyNumberCaller (SMNCNC) tool from Illumina.<sup>24</sup> In brief, this method uses read depth information at the 8 loci in the *SMN1* and *SMN2* genes to determine the consensus CN of both genes (coordinates against hg19): site number 7 (intron 6, SMN1 chr5-70246320-G, SMN2 chr5-69370895-A), site number 8 (intron 6, SMN1 chr5-70246793-G, SMN2 chr5-69371368-A), site number 10 (intron 6, SMN1 chr5-70247219-G, SMN2 chr5-69371799-A), site number 11 (intron 6, SMN1 chr5-70247290-T, SMN2 chr5-69371870-C), site number 12 (intron 6, SMN1 chr5-70247724-G, SMN2 chr5-69372304-A), site number 13 (Splice site variant in exon 7, SMN1 chr5-70247773-C, SMN2 chr5-69372353-T), site number 14 (intron7, SMN1 chr5-70247921-A, SMN2 chr5-69372501-G), and site number 15 (intron7, SMN1 chr5-70248036-A, SMN2 chr5-69372616-G). Wet lab validation was performed using multiplexed ligation-dependent probe amplification (MLPA) using standard protocols as described by Blauw et al.<sup>7</sup>

### Power Analysis

Power calculations were performed for the survival and onset analysis using the powerCT function of the R package powerSurvEpi (version 0.1.0), with a *p* value threshold of 0.05.

### Statistical Analysis

To test the independence of the *SMN* CN distributions between cohorts we used a 2-sided asymptotic generalized Pearson Chi-Squared test ( $g\chi^2$ ) provided by the `chisq_test` method of the R package coin (version 1.3-1), with *SMN* CN as ordinal and cohort as nominal. When comparing the *SMN* CN distribution of only two cohorts a 2-sided asymptotic linear-by-linear (lbl) association test was used, implemented by the same `chisq_test` method.

For the corrected risk analysis, a 2-sided binomial multivariate logistic regression was performed using the glm function from the R stats package. *SMN* CN was added to the model as a categorical variable with baseline a CN of 2, while correcting for the following terms: sex, sequencing technology, cohort, the first 20 HapMap projected principal components (PCs), and the mutation status of *C9orf72*, *SOD1*, *FUS*, and *TARDBP*.

Cox survival analysis was performed using the coxph function of the R package survival (version 3.1–8). Flexible survival regression using the Royston-Parmar (RP) spline model was performed using the flexsurvspline function from the R package flexsurv (version 1.1.1). When assessing the effect of *SMN* CN on survival *SMN* CN was treated as a categorical variable with baseline a CN of 2. Survival analyses were corrected for age at onset, sex, site of onset, *C9orf72* expansion status, sequencing technology, cohort, and the first 20 HapMap projected PCs. Onset analyses were corrected for sex, sequencing technology, cohort, and the first 20 HapMap projected PCs.

Meta-analysis of the individual cohort was performed using the meta (version 4.13–0) and metafor (version 2.4–0) R packages. The same covariates were used as in the risk, survival, and onset analysis, but only the first 5 HapMap projected PCs were used.

## Results

### Validating *SMN* Calls from WGS Data

We used 2,412 controls and 6,375 cases that passed the QC metric and had sufficient clinical information (Table

and Table S1). For these samples, we ran SMNCNC to estimate the CN of *SMN1* and *SMN2*. For 475 of our samples, we also had *SMN* CNs available from MLPA. We excluded samples where the MLPA results for exon 7 and exon 8 disagreed with each other. The concordance between the MLPA results of exon 7 and exon 8 was 89.3% for *SMN1* and 97.9% for *SMN2*. Excluding discordant samples resulted in a set of 413 samples. This set was then further compared with the results of SMNCNC, with a concordance of 99.3% and 99.5% for *SMN1* and *SMN2*, respectively, which is similar to previous findings (Figs 1 and 2).<sup>24</sup>

### *SMN* CNs as a Risk Factor for ALS

To investigate if our *SMN* CN estimates can be used in a risk factor analysis, we first compared the frequency of *SMN* copies in our controls to published literature (Fig 3A, B, and Table S2).<sup>7,12,25–27</sup> To assess the CN distributions across multiple groups we used a  $g\chi^2$  test, whereas we used the lbl test when comparing the distribution between the 2 groups. Assessing the *SMN1* and *SMN2* CN distribution across the different control populations revealed geographic differences, as previously reported (*SMN1*;  $g\chi^2$   $p < 2.2 \times 10^{-16}$ ; *SMN2*  $g\chi^2$   $p = 5.1 \times 10^{-7}$ ).<sup>27</sup> When comparing our *SMN1* CN distribution to a Caucasian population of 2,175 individuals we did not find any difference (lbl  $p = 0.16$ ; see Fig 3A), confirming that our control population is representative.<sup>27</sup> Within the control samples of Project MinE no difference in *SMN1* or *SMN2* CN frequency was observed between

**TABLE. Phenotype Information of the MinE Participants**

	ALS (%)		Control (%)	
<b>Project MinE</b>	<b>6375</b>	<b>(72.55)</b>	<b>2412</b>	<b>(27.45)</b>
<b>Sex</b>				
Male	3,815	(59.84)	1,272	(52.74)
<b>C9orf72 status</b>				
Expanded	377	(5.91)	7	(0.29)
<b>Onset</b>				
Spinal	4,226	(66.29)		
Bulbar	1,734	(27.2)		
Generalized	221	(3.47)		
Thoracic/respiratory	112	(1.76)		
FTD	5	(0.08)		

ALS = amyotrophic lateral sclerosis; FTD = frontotemporal dementia.

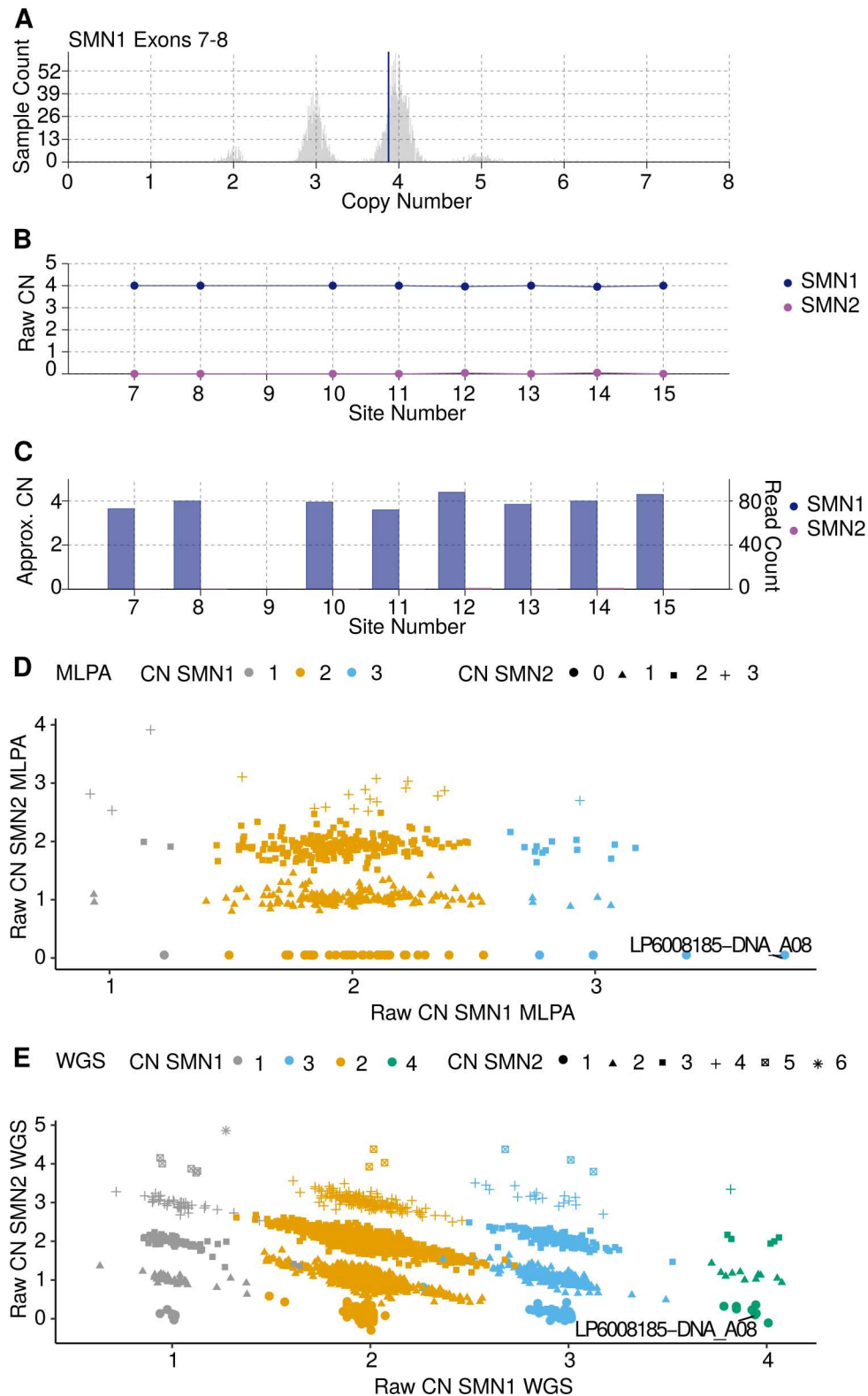


FIGURE 1: Raw data plots for discordant MLPA call. MPLA called 3 CNs for *SMN1* in sample LP6008185-DNA\_A08, whereas SMNCNC called 4 CNs for *SMN1*. Closer inspection revealed SMNCNC to be correct. (A) Raw CN of full length *SMN1* estimated by exon 7 and 8, histogram indicating the estimated CN of a large control cohort, vertical blue line indicates the discordant sample. (B) *SMN1* and *SMN2* raw CN values at the 8 loci used to determine the consensus CN. (C) *SMN1* and *SMN2* CNs normalized against coverage depth at the 8 loci. (D) Scatterplot of the raw CN calls by MLPA, on the x-axis raw CN for *SMN1*, on the y-axis raw CN for *SMN2*, discordant sample indicated with a line. (E) Scatter plot of the raw CN calls by SMNCNC, on the x-axis raw CN for *SMN1*, and on the y-axis raw CN for *SMN2*, discordant sample indicated with a line. CN = copy number; MLPA = multiplexed ligation-dependent probe amplification; SMN = survival of motor neuron; SMNCNC = SMNCopyNumberCaller; WGS = whole genome sequencing.

the cohorts (*SMN1*;  $g\chi^2 p = 0.45$ ; *SMN2*;  $g\chi^2 p = 0.53$ ; Fig 4 and Tables S3 and S4).

When looking at *SMN* CN frequency in patients with ALS of published cohorts and our own we do observe a significant difference for *SMN1* CN ( $g\chi^2 p = 7.3 \times 10^{-4}$ ) but not for *SMN2* CN ( $g\chi^2 p = 0.10$ ). Within Project MinE no differences between cohorts for *SMN1* CN ( $g\chi^2 p = 0.52$ ) were observed, whereas for *SMN2* differences were observed ( $g\chi^2 p = 4.9 \times 10^{-4}$ ), in the Turkish cohort (see Fig 4B and Tables S3 and S4).

Comparing *SMN1* frequency between cases and controls within Project MinE revealed no significant differences (lbl  $p = 0.54$ ), similarly *SMN2* also did not show any differences (lbl  $p = 0.23$ ; see Fig 3C, D). Using a binomial logistic regression, we performed a corrected case control risk analysis for the *SMN* CN. Similarly, we did not observe any significant differences for the *SMN* CN status between cases and controls (binomial multivariate logistic regression; *SMN1*  $p = 0.54$  and *SMN2*  $p = 0.49$ ). Cohort analysis within Project MinE and meta-analysis of the cohorts did not reveal any differences (see Fig 4). In addition, other CN categories, including duplications of *SMN1* or *SMN2* (lbl; *SMN1*  $p = 0.55$  and *SMN2*  $p = 0.71$ ; binomial multivariate logistic regression; *SMN1*  $p = 0.73$  and *SMN2*  $p = 0.83$ ) or deletions (lbl; *SMN1*  $p = 0.69$  and *SMN2*  $p = 0.22$ ; binomial multivariate logistic regression; *SMN1*  $p = 0.98$  and *SMN2*  $p = 0.39$ ) did not associate with ALS.

### SMN CNs as a Modifier for ALS

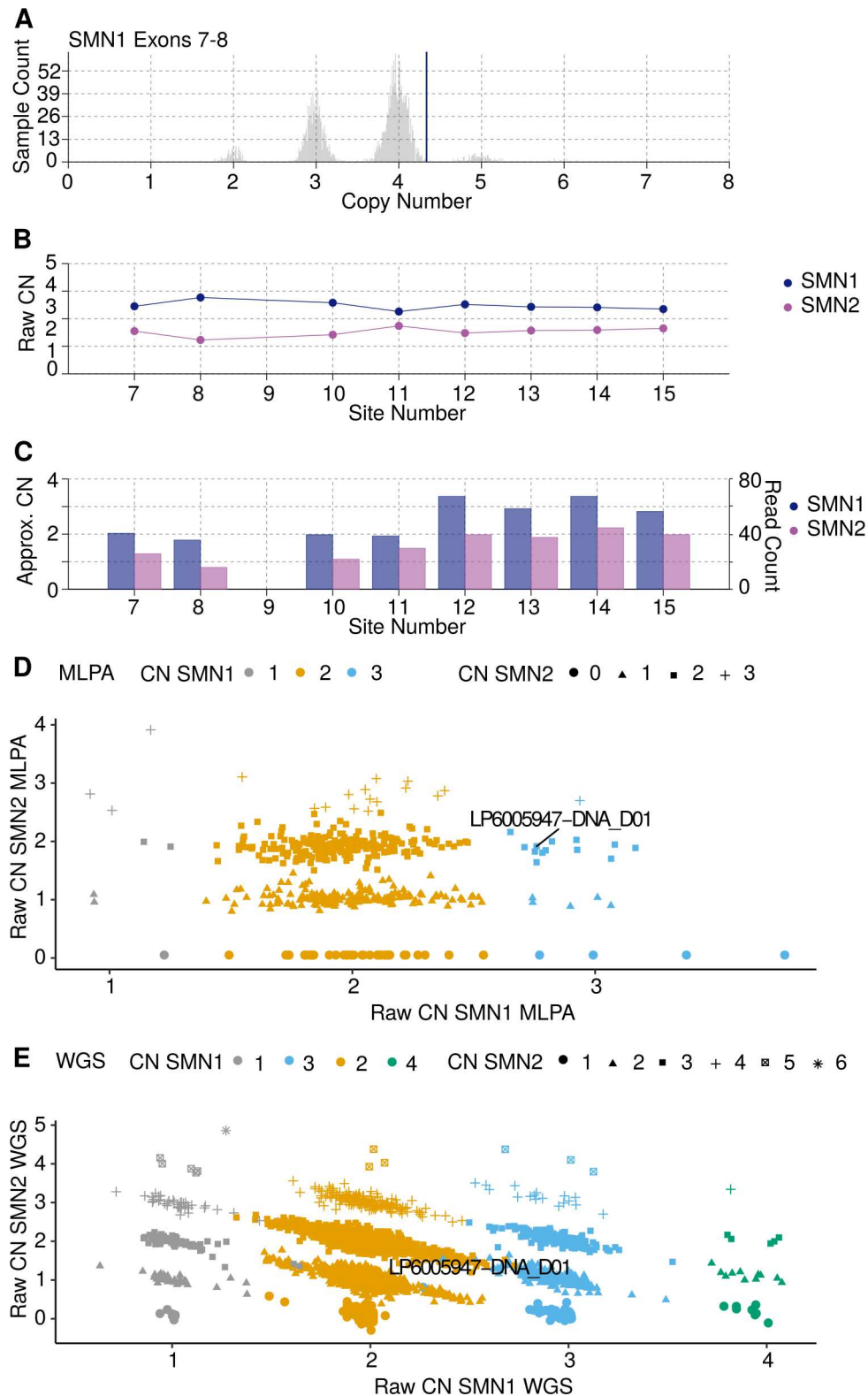
As the CN of *SMN* has been proposed as a disease modifier, we also investigated the effect on age at onset and survival.<sup>10,15</sup> For this, we performed both a Cox regression and a RP analysis,<sup>28</sup> while correcting for covariates. This revealed no significant association with survival for *SMN1* (Cox hazard ratio [HR] = 1.00, 95% confidence interval [CI] = 0.91–1.11,  $p = 0.89$ ; RP HR = 0.98, 95% CI = 0.84–1.14,  $p = 0.78$ ) or *SMN2* (Cox HR = 1.01, 95% CI = 0.97–1.05,  $p = 0.67$ ; RP HR = 1.04, 95% CI = 0.97–1.12,  $p = 0.23$ ; Fig 5A, B). Meta analyzing the results in the individual cohorts with a random effect model revealed no significant associations for *SMN1* (Cox HR = 1.00, 95% CI = 0.90–1.10,  $p = 0.96$ ; RP HR = 0.95, 95% CI = 0.80–1.13,  $p = 0.59$ ) or *SMN2* (Cox HR = 1.01, 95% CI = 0.95–1.07,  $p = 0.73$ ; RP HR = 1.04, 95% CI = 0.95–1.13,  $p = 0.43$ ). Power analysis showed that our cohort had an 80% power to detect a 25% change in expected hazard for *SMN1* deletion (~ 9 months), 16% for *SMN1* duplication (~ 6 months), 9% for *SMN2* deletion (~ 3 months), and 22% for *SMN2* duplications (~ 9 months).

Similarly, we investigated the effect on onset, while correcting for covariates. Neither *SMN1* nor *SMN2* showed a significant association with onset at the level of the whole cohort (*SMN1*; Cox HR = 0.98, 95% CI = 0.90–1.06,  $p = 0.63$ , RP HR = 0.98, 95% CI = 0.85–1.13,  $p = 0.75$ ; *SMN2*; Cox HR = 1.00, 95% CI = 0.97–1.04,  $p = 0.86$ , RP HR = 1.01, 95% CI = 0.95–1.08,  $p = 0.63$ ) or by the cohort analysis (see Fig 5C, D). Likewise, meta analyzing using a random effect model revealed no significant associations for *SMN1* (Cox HR = 0.97, 95% CI = 0.89–1.06,  $p = 0.49$ ; RP HR = 0.94, 95% CI = 0.75–1.17,  $p = 0.57$ ) or *SMN2* (Cox HR = 1.00, 95% CI = 0.94–1.07,  $p = 0.85$ ; RP HR = 1.01, 95% CI = 0.91–1.13,  $p = 0.83$ ). Power analysis for the age at onset analysis showed we had an 80% power to detect a 21% change in expected hazard for *SMN1* deletion, 14% for *SMN1* duplication, 7% for *SMN2* deletion, and 19% for *SMN2* duplications.

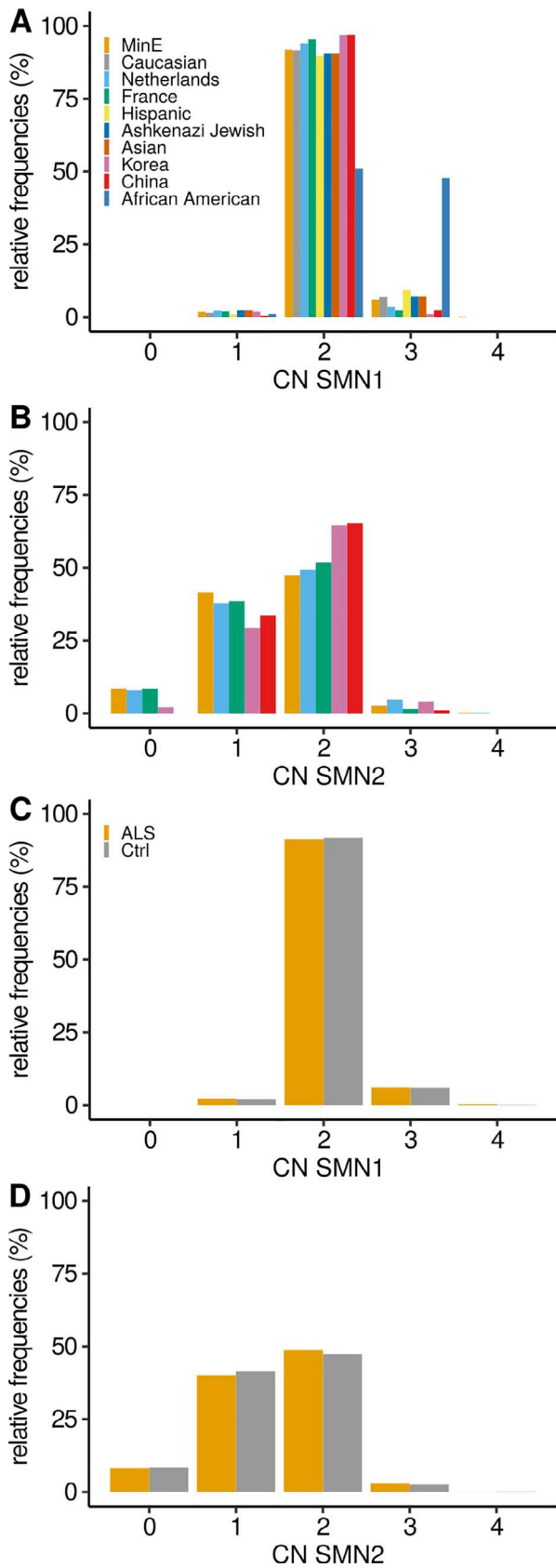
### Discussion

Our study, in a large cohort of patients with ALS for which *SMN1* and *SMN2* CNs have been assessed, shows that no association can be found between the CN of the *SMN* genes and ALS risk or disease severity. This is in line with some previously published studies, but inevitably also contradicts some previous findings in much smaller studies.<sup>6–15</sup> Given that our study is currently by far the largest available, includes samples spread out over a wide range of geographical areas, is well powered, and subgroup analyses did not reveal any associations, this study provides conclusive evidence that *SMN* genes do not have a role in ALS pathogenesis through *SMN* gene CN. Previous studies reported an increased risk of ALS up to 2-fold to 5-fold for carriers with only one copy of *SMN1*, which represent carrier status of SMA.<sup>9,12,13</sup> Our study clearly shows that SMA carriers, representing ~ 2% of the population, are not at an increased risk of developing ALS. The CN distribution in our control samples were consistent with an independent large control cohort, further validating our approach.<sup>27</sup>

WGS data identify a multitude of genomic variations, including single point variants, small insertions, deletions, and structural variations. Additionally, an increasing amount of reliable bioinformatic tools become available for WGS data to assess complex genomic regions like, for example, repeat expansions or genomic duplications like the *SMN* region, allowing to extract new information from WGS data with unprecedented ease and speed, without the necessity of additional wet lab experiments. A recent study evaluating the reliability of wet lab testing of the C9orf72 repeat across multiple laboratories,



**FIGURE 2: Raw data plots for discordant SMNCNC call.** MPLA called 3 CNs for *SMN1* in sample LP6005947-DNA\_D01, whereas SMNCNC called 2 CNs for *SMN1*. Closer inspection revealed MLPA to be correct. (A) Raw CN of full length *SMN1* estimated by exon 7 and 8, histogram indicating the estimated CN of a large control cohort, vertical blue line indicates the discordant sample. (B) *SMN1* and *SMN2* raw CN values at the 8 loci used to determine the consensus CN. (C) *SMN1* and *SMN2* CN normalized against coverage depth at the 8 loci. (D) Scatterplot of the raw CN calls by MLPA, on the x-axis raw CN for *SMN1*, and on the y-axis raw CN for *SMN2*, discordant sample indicated with a line. (E) Scatter plot of the raw CN calls by SMNCNC, on the x-axis raw CN for *SMN1*, and on the y-axis raw CN for *SMN2*, discordant sample indicated with a line. CN = copy number; MLPA = multiplexed ligation-dependent probe amplification; SMN = survival of motor neuron; SMNCNC = SMNCopyNumberCaller; WGS = whole genome sequencing.



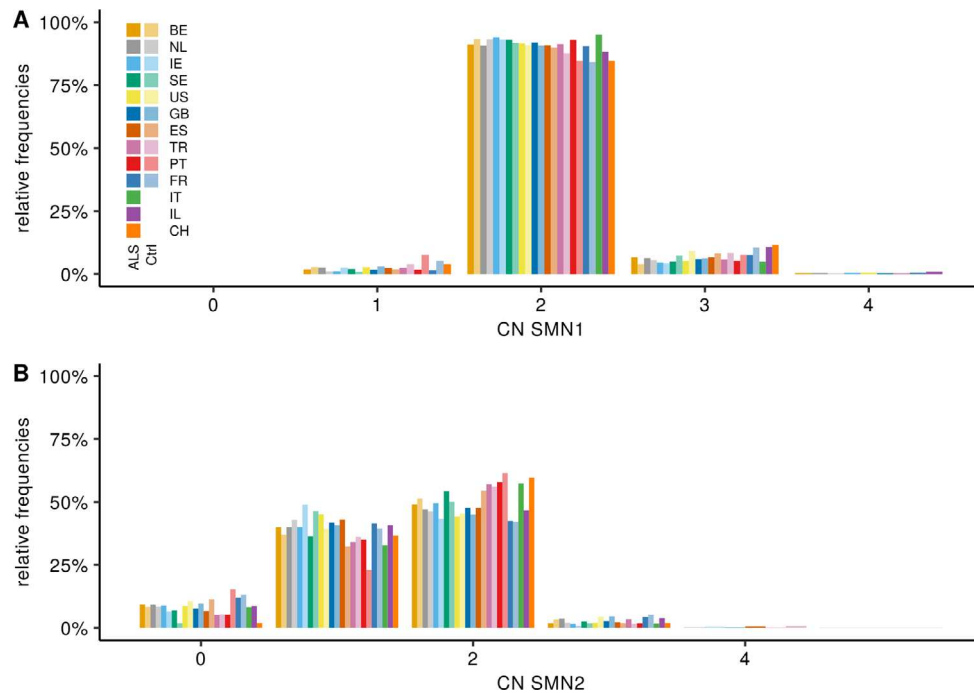
(Figure legend continues on next page.)

showed a low concordance between different laboratories, highlighting the difficulties of wet lab testing and accompanying result interpretations.<sup>29</sup> It has recently been shown that C9orf72 calls made from WGS data were more reliable than their wet lab counterparts.<sup>23</sup> The power of WGS is that it offers a one-stop solution for all the known genetically relevant ALS information, including genetic variation in complex regions.

Recently, SMA became a treatable disease currently with 3 treatment options. The first option is the use of chronic intrathecal antisense oligonucleotide therapy, that aims to convert *SMN2* gene products that lack exon 7 into full length *SMN1* protein.<sup>19</sup> The second option is a single dose viral gene replacement therapy that adds an extra copy of *SMN1* into the patient's genome.<sup>20</sup> In addition, compound therapies are being developed to increase the expression of the *SMN* locus. These breakthroughs in SMA could be important for ALS as well. The *SMN1* protein plays important roles in RNA metabolism, which has been implicated in ALS as well. However, the motor neuron death cascades seem to be distinct in both diseases.<sup>30,31</sup> Given our findings and the differences at genetic and molecular level that led to motor neuron death in ALS and SMA, current SMA treatment options may not be beneficial for patients with ALS.

Although our genetic findings show that *SMN* CN is not involved in ALS, it does not entirely rule out that changes in protein levels contribute to motor neuron degeneration in ALS. *SMN* protein levels are not solely determined by the CN state of the *SMN* genes, many processes influence protein level, including mRNA transcription, translation efficiency, post translational modification, and protein aggregation and sequestration. CN levels of *SMN1* and *SMN2* correlate with mRNA levels in blood, spinal cord, and cerebellum, as previously shown.<sup>32,33</sup> Protein levels do so to a lesser extent in blood and cerebellum, and not in the spinal cord.<sup>32,34</sup> Taken together these

**FIGURE 3: Frequency of the CNs of the *SMN1* and 2 genes.** Frequency of (A) *SMN1* and (B) *SMN2* copy number in control individuals of this study (MinE), Feng Y. et al. (White, Hispanic, Ashkenazi Jewish, Asian, and African American), Blauw HM. et al. (The Netherlands), Corcia P. et al. (France), Yoon S. et al. (Korea), and Fang P. et al. (China). Comparisons of the different cohort toward this study for *SMN1* (lbi *p* value): White (0.16), Netherlands ( $3.2 \times 10^{-3}$ ), France ( $1.3 \times 10^{-3}$ ), Hispanic ( $3.4 \times 10^{-5}$ ), Ashkenazi Jewish (0.20), Asian (0.83), Korea (0.07), China (0.25), and African American ( $<1 \times 10^{-16}$ ); and *SMN2*: Netherlands ( $1.1 \times 10^{-2}$ ), France (0.63), Korea ( $2.3 \times 10^{-4}$ ), and China ( $7.6 \times 10^{-6}$ ). Frequency of (C) *SMN1* and (D) *SMN2* copy numbers in patients with ALS and control individuals in this study. ALS = amyotrophic lateral sclerosis; CN = copy number; lbi = linear-by-linear.



**FIGURE 4: SMN frequencies by country.** Frequency of *SMN1* (A) and *SMN2* (B) CN in ALS patients and control individuals in this study by cohort. Lighter colors indicate controls. Comparisons of the different ALS cohort toward the Turkish cohort for *SMN1* (lbl  $p$  value): BE (0.41), NL (0.75), IE (0.86), SE (0.67), US (0.79), GB (0.55), ES (0.96), PT (0.90), FR (0.21), IT (0.83), IL ( $1.1 \times 10^{-2}$ ) and CH (0.42); and *SMN2*: BE ( $7.1 \times 10^{-5}$ ), NL ( $2.5e-5$ ), IE ( $1.6 \times 10^{-4}$ ), SE (0.19), US ( $0.4.0 \times 10^{-6}$ ), GB ( $9.9 \times 10^{-5}$ ), ES ( $5.9 \times 10^{-3}$ ), PT (0.73), FR ( $2.3 \times 10^{-4}$ ), IT (0.44), IL (0.05), and CH (0.81). ALS = amyotrophic lateral sclerosis; BE = Belgium; CH = Switzerland; CN = copy number; GB = United Kingdom; ES = Spain; FR = France; IE = Ireland; IL = Israel; IT = Italy; lbl = linear-by-linear; NL = The Netherlands; PT = Portugal; SE = Sweden; SMN = survival of motor neuron; TR = Turkey; US = United States.

results show protein levels cannot be reliably predicted on *SMN* CN state alone. Furthermore, our findings do not rule out that overexpression of *SMN* to levels above the physiological range can have beneficial effects in protecting motor neurons in ALS. Indeed, previous work showed that motor neurons with the same genetic background display a wide heterogeneity of *SMN* expression and that mostly the motor neurons with a low level of *SMN* are vulnerable for motor neuron death.<sup>35</sup> Additionally, they showed that using compounds that increase *SMN* protein levels, through *SMN1* expression promotion, but not *SMN2*, were beneficial for the survival of motor neurons, not only in SMA but also in an ALS context and in healthy controls.<sup>35</sup>

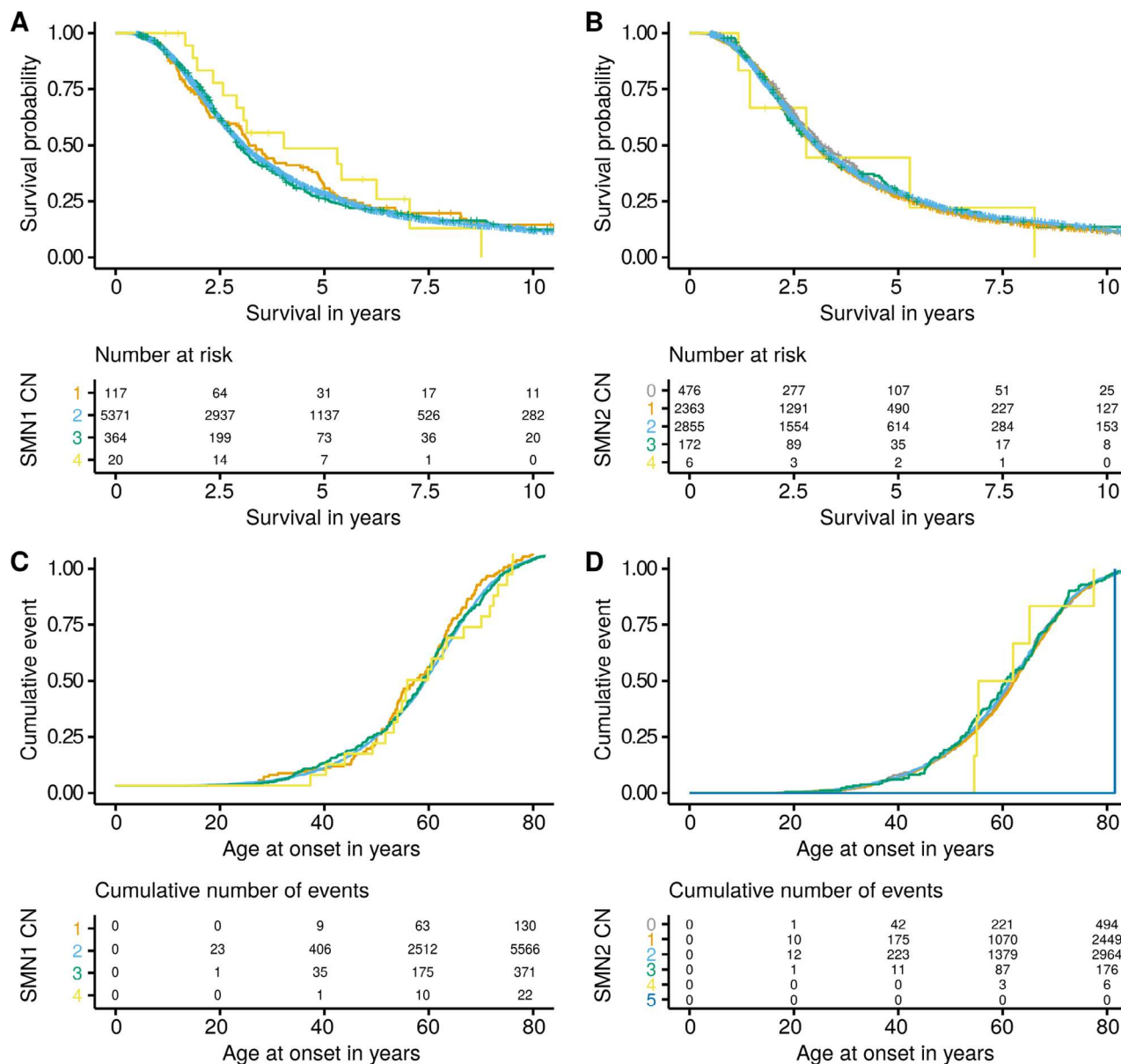
This study has some limitations. Project MinE is not a population-based study, but a multicenter study in which data and samples from different centers and countries are included. Samples are mostly from people of European descent. This could potentially limit the external validity to a wider, more diverse population and lead to population stratification. However, Project MinE explicitly aims to include balanced case control cohorts resulting in control samples not being significantly different from previously published data sets.<sup>21</sup> This, together with the large sample size and multivariate analyses,

therefore add to the credibility of these results. Last, given the complexity of the *SMN* locus, we did not investigate the role of point mutations and small indel in the *SMN* genes in the context of ALS, as these mutations could also lead to a loss-of-function, like *SMN1* gene deletions. In the light of our current results and the fact that they represent only 5% of *SMN1* mutations, chances are small that these do play a role in ALS.<sup>17</sup>

In summary, in our well-powered study, using highly reliable and validated *SMN* calls, there was no association of *SMN1* or *SMN2* CNs with the risk of ALS or ALS disease severity. This suggests that changing *SMN* expression levels in the physiological range may not modify the progression of ALS. This is an important finding in the light of emerging therapies targeted at *SMN* deficiencies.

## Acknowledgments

The authors thank the patients, their families, and healthy controls for their participation in this project. Samples were sequenced as part of Project MinE. Project MinE Belgium was supported by a grant from IWT (no. 140935), FWO-Vlaanderen (G0B2819N), the ALS Liga België, the National Lottery of Belgium, and the KU



**FIGURE 5: Survival and onset of patients, stratified by SMN CN.** Kaplan Meier survival curves and risk table for (A) *SMN1* and (B) *SMN2* CNs. Kaplan Meier age at onset curves and cumulative events table for (C) *SMN1* and (D) *SMN2*. CN = copy number; SMN = survival of motor neuron.

Leuven Opening the Future Fund. P.V.D. holds a senior clinical investigatorship of FWO-Vlaanderen and is supported by E. von Behring Chair for Neuromuscular and Neurodegenerative Disorders, the ALS Liga België, and the KU Leuven funds “Een Hart voor ALS,” “Laeversfonds voor ALS Onderzoek,” and the “Valéry Perrier Race against ALS Fund.” Several authors of this publication are members of the European Reference Network for Rare Neuromuscular Diseases (ERN-NMD). This project has received funding from the European Research Council (ERC) under the European Union’s Horizon 2020 research and innovation programme (grant agreement no. 772376 - EScORIAL). This study was

supported by the ALS Foundation Netherlands. The collaboration project is co-funded by the PPP Allowance made available by Health ~ Holland, Top Sector Life Sciences & Health, to stimulate public-private partnerships. This is in part an EU Joint Programme - Neurodegenerative Disease Research (JPND) project. The project is supported through the following funding organizations under the aegis of JPND - www.jpnd.eu (United Kingdom, Medical Research Council (MR/L501529/1; MR/R024804/1, the Netherlands, ZONMW, grant no. 733051071, BRAIN-MEND), and through the Motor Neurone Disease Association. This study represents independent research part funded by the National

Institute for Health Research (NIHR) Maudsley Biomedical Research Centre. Samples used in this research were in part obtained from the UK National DNA Bank for MND Research, funded by the MND Association and the Wellcome Trust. Funding was provided to J.E.L. by the NIH/NINDS (R01NS073873) and the ALS Association. V.S. receives or has received research supports from the Italian Ministry of Health (Grant RF-201302355764), Fondazione Italiana di Ricerca per la SLA – AriSLA (Grant Exomefals and Novals), Fondazione Regionale per la Ricerca Biomedica Regione Lombardia (Project no. 2015–0023), and E-RARE JTC (Project Repetomics). R.McL. is supported by Science Foundation Ireland (17/CDA/4737).

### Author Contributions

M.M., P.V.D., and J.V. contributed to the conception and design of the study. All authors contributed to the acquisition and analysis of data. M.M., P.V.D., J.V., X.C., and M.A.E. contributed to drafting the text and preparing the figures.

### Potential Conflicts of Interest

X.C. and M.A.E. are employees of Illumina Inc.

### Data Availability

Data can be accessed through EGAC00001000703. The authors declare that all the other data supporting the findings of this study are available within the article, its Supplementary Information files, or from the corresponding author upon reasonable request.

### References

1. Van Damme P, Robberecht W, Van Den Bosch L. Modelling amyotrophic lateral sclerosis: progress and possibilities. *Dis Model Mech* 2017;10:537–549.
2. Hagenacker T, Wurster CD, Günther R, et al. Nusinersen in adults with 5q spinal muscular atrophy: a non-interventional, multicentre, observational cohort study. *Lancet Neurol* 2020;19:317–325.
3. Pupillo E, Messina P, Logroscino G, et al. Long-term survival in amyotrophic lateral sclerosis: a population-based study. *Ann Neurol* 2014;75:287–297.
4. Masrori P, Van Damme P. Amyotrophic lateral sclerosis: a clinical review. *Eur J Neurol* 2020;27:1918–1929.
5. Fogh I, Lin K, Tiloca C, et al. Association of a locus in the CAMTA1 gene with survival in patients with sporadic amyotrophic lateral sclerosis. *JAMA Neurol* 2016;73:812–820.
6. Wang X-B, Cui N-H, Gao J-J, et al. SMN1 duplications contribute to sporadic amyotrophic lateral sclerosis susceptibility: evidence from a meta-analysis. *J Neurol Sci* 2014;340:63–68.
7. Blauw HM, Barnes CP, van Vught PWJ, et al. SMN1 gene duplications are associated with sporadic ALS. *Neurology* 2012;78:776–780.
8. Corcia P, Ingre C, Blasco H, et al. Homozygous SMN2 deletion is a protective factor in the Swedish ALS population. *Eur J Hum Genet* 2012;20:588–591.
9. Veldink JH, Kalmijn S, Van der Hout AH, et al. SMN genotypes producing less SMN protein increase susceptibility to and severity of sporadic ALS. *Neurology* 2005;65:820–825.
10. Veldink JH, van den Berg LH, Cobben JM, et al. Homozygous deletion of the survival motor neuron 2 gene is a prognostic factor in sporadic ALS. *Neurology* 2001;56:749–752.
11. Corcia P, Camu W, Praline J, et al. The importance of the SMN genes in the genetics of sporadic ALS. *Amyotroph Lateral Scler* 2009;10:436–440.
12. Corcia P, Camu W, Halimi J-M, et al. SMN1 gene, but not SMN2, is a risk factor for sporadic ALS. *Neurology* 2006;67:1147–1150.
13. Corcia P, Mayeux-Portas V, Khoris J, et al. Abnormal SMN1 gene copy number is a susceptibility factor for amyotrophic lateral sclerosis. *Ann Neurol* 2002;51:243–246.
14. Gamez J, Barceló MJ, Muñoz X, et al. Survival and respiratory decline are not related to homozygous SMN2 deletions in ALS patients. *Neurology* 2002;59:1456–1460.
15. Lee J-B, Lee K-A, Hong J-M, et al. Homozygous SMN2 deletion is a major risk factor among twenty-five Korean sporadic amyotrophic lateral sclerosis patients. *Yonsei Med J* 2012;53:53–57.
16. Harada Y, Sutomo R, Sadewa AH, et al. Correlation between SMN2 copy number and clinical phenotype of spinal muscular atrophy: three SMN2 copies fail to rescue some patients from the disease severity. *J Neurol* 2002;249:1211–1219.
17. Sun Y, Grimmer M, Schwarzer V, et al. Molecular and functional analysis of intragenic SMN1 mutations in patients with spinal muscular atrophy. *Hum Mutat* 2005;25:64–71.
18. Rochette CF, Gilbert N, Simard LR. SMN gene duplication and the emergence of the SMN2 gene occurred in distinct hominids: SMN2 is unique to *Homo sapiens*. *Hum Genet* 2001;108:255–266.
19. Hua Y, Sahashi K, Hung G, et al. Antisense correction of SMN2 splicing in the CNS rescues necrosis in a type III SMA mouse model. *Genes Dev* 2010;24:1634–1644.
20. Mendell JR, Al-Zaidy S, Shell R, et al. Single-dose gene-replacement therapy for spinal muscular atrophy. *N Engl J Med* 2017;377:1713–1722.
21. Project MinE ALS Sequencing Consortium. Project MinE: study design and pilot analyses of a large-scale whole-genome sequencing study in amyotrophic lateral sclerosis. *Eur J Hum Genet* 2018;26:1537–1546.
22. Kopanos C, Tsiolkas V, Kouris A, et al. VarSome: the human genomic variant search engine. *Bioinformatics* 2019;35:1978–1980.
23. Dolzhenko E, Deshpande V, Schlesinger F, et al. ExpansionHunter: a sequence-graph-based tool to analyze variation in short tandem repeat regions. *Bioinformatics* 2019;35:4754–4756.
24. Chen X, BioResource N, Sanchis-Juan A, et al. Spinal muscular atrophy diagnosis and carrier screening from genome sequencing data. *Genet Med* 2020;22:945–953.
25. Yoon S, Lee CH, Lee K-A. Determination of SMN1 and SMN2 copy numbers in a Korean population using multiplex ligation-dependent probe amplification. *Korean J Lab Med* 2010;30:93–96.
26. Fang P, Li L, Zeng J, et al. Molecular characterization and copy number of SMN1, SMN2 and NAIP in Chinese patients with spinal muscular atrophy and unrelated healthy controls. *BMC Musculoskelet Disord* 2015;16:11.
27. Feng Y, Ge X, Meng L, et al. The next generation of population-based spinal muscular atrophy carrier screening: comprehensive pan-ethnic SMN1 copy-number and sequence variant analysis by massively parallel sequencing. *Genet Med* 2017;19:936–944.
28. Royston P, Parmar MKB. Flexible parametric proportional-hazards and proportional-odds models for censored survival data, with

- application to prognostic modelling and estimation of treatment effects. *Stat Med* 2002;21:2175–2197.
29. Akimoto C, Volk AE, van Blitterswijk M, et al. A blinded international study on the reliability of genetic testing for GGGGCC-repeat expansions in C9orf72 reveals marked differences in results among 14 laboratories. *J Med Genet* 2014;51:419–424.
  30. Bowerman M, Murray LM, Scamps F, et al. Pathogenic commonalities between spinal muscular atrophy and amyotrophic lateral sclerosis: converging roads to therapeutic development. *Eur J Med Genet* 2018;61:685–698.
  31. Simon CM, Dai Y, Van Alstyne M, et al. Converging mechanisms of p53 activation drive motor neuron degeneration in spinal muscular atrophy. *Cell Rep* 2017;21:3767–3780.
  32. Ramos DM, d'Ydewalle C, Gabbeta V, et al. Age-dependent SMN expression in disease-relevant tissue and implications for SMA treatment. *J Clin Invest*. 2019;129:4817–4831.
  33. Czech C, Tang W, Bugawan T, et al. Biomarker for spinal muscular atrophy: expression of SMN in peripheral blood of SMA patients and healthy controls. *PLOS ONE*. 2015;10:e0139950.
  34. Sumner CJ, Kolb SJ, Harmison GG, et al. SMN mRNA and protein levels in peripheral blood. *Neurology*. 2006;66:1067–1073.
  35. Rodriguez-Muela N, Litterman NK, Norabuena EM, et al. Single-cell analysis of SMN reveals its broader role in neuromuscular disease. *Cell Rep* 2017;18:1484–1498.