



UNIVERSITY OF LEEDS

This is a repository copy of *Taking the pulse of Earth's tropical forests using networks of highly distributed plots*.

White Rose Research Online URL for this paper:

<https://eprints.whiterose.ac.uk/169954/>

Version: Accepted Version

Article:

ForestPlots.net, Blundo, C, Carilla, J et al. (547 more authors) (2021) Taking the pulse of Earth's tropical forests using networks of highly distributed plots. *Biological Conservation*, 260. 108849. ISSN 0006-3207

<https://doi.org/10.1016/j.biocon.2020.108849>

© 2020, Elsevier. This manuscript version is made available under the CC-BY-NC-ND 4.0 license <http://creativecommons.org/licenses/by-nc-nd/4.0/>.

Reuse

This article is distributed under the terms of the Creative Commons Attribution-NonCommercial-NoDerivs (CC BY-NC-ND) licence. This licence only allows you to download this work and share it with others as long as you credit the authors, but you can't change the article in any way or use it commercially. More information and the full terms of the licence here: <https://creativecommons.org/licenses/>

Takedown

If you consider content in White Rose Research Online to be in breach of UK law, please notify us by emailing eprints@whiterose.ac.uk including the URL of the record and the reason for the withdrawal request.



eprints@whiterose.ac.uk
<https://eprints.whiterose.ac.uk/>

Taking the Pulse of Earth's Tropical Forests using Networks of Highly Distributed Plots

Authors: "ForestPlots.net, Cecilia Blundo, Julieta Carilla, Ricardo Grau, et al.", each of the 548 individual contributors should be included and listed as in the Author Table (alphabetical by country and family name with institution)

Corresponding author: Oliver L. Phillips

Abstract

Tropical forests are the most diverse and productive ecosystems on Earth. While better understanding of these forests is critical for our collective future, until quite recently efforts to measure and monitor them have been largely disconnected. Networking is essential to discover the answers to questions that transcend borders and the horizons of funding agencies. Here we show how a global community has responded to the challenges of tropical ecosystem research with diverse teams measuring forests tree-by-tree in hundreds of long-term plots. We review the major scientific discoveries of this work and show how this process is changing tropical forest science. Our core approach involves linking long-term grassroots initiatives with standardized protocols and data management to generate robust scaled-up results. By connecting tropical researchers and elevating their status, our Social Research Network model recognises the key role of the data originator in scientific discovery. Conceived in 1999 with RAINFOR (South America), our permanent plot networks have been adapted to Africa (AfriTRON) and Southeast Asia (T-FORCES) and widely emulated worldwide. Now these multiple initiatives are integrated via ForestPlots.net cyber-infrastructure, linking colleagues from 54 countries across 24 plot networks. Collectively these are transforming understanding of tropical forests and their biospheric role. Together we have discovered how, where and why forest carbon and biodiversity are responding to climate change, and how they feedback on it. This long-term pan-tropical collaboration has revealed a large long-term carbon sink and its trends, as well as making clear which drivers are most important, which forest processes are affected, where they are changing, what the lags are, and the likely future responses of tropical forests as the climate continues to change. By leveraging a remarkably old technology, plot networks are sparking a very modern revolution in tropical forest science. In the future, humanity can benefit greatly by nurturing the grassroots communities now collectively capable of generating unique, long-term understanding of Earth's most precious forests.

Key Words: Amazonia, Africa, Southeast Asia, rainforest, RAINFOR, AfriTRON, species richness, forest plots, permanent sample plots, monitoring, dynamics, carbon sink, global change, ecology, biodiversity.

40 **Introduction**

41 As the most diverse and productive ecosystems on Earth, tropical forests play essential roles in the
42 carbon and water cycles and maintenance of global biodiversity. Tropical forest lands are also home to
43 more than a billion people and thousands of cultures. Having first provided the environments and
44 germplasm that sustained foragers and farmers since the earliest days of humanity, today they underpin
45 a large fraction of our globalized diet and intense demand for water, food and clean air. They also affect
46 our health in multiple ways, providing rich pharmacopeias to traditional and modern societies, and
47 capable of changing the course of history when pandemic zoonotic pathogens emerge as forests and
48 wildlife are exploited. Tropical forests are also critical to determining the degree and impact of
49 anthropogenic climate change. Because of their extent, carbon density and productivity, they may both
50 slow global heating by absorbing carbon into their biomass and soils, or accelerate it as deforestation
51 and high temperatures damage forests and release carbon to the atmosphere.

52
53 Tropical carbon and biodiversity are therefore critical targets for environmental measurement and
54 monitoring. While vital to our past and future, efforts to measure and monitor them have until recently
55 been localised and largely disconnected. Although aspects of their ecology can be sensed remotely on-
56 the-ground, tree-by-tree measurement is essential. Indeed ground measurements are irreplaceable –
57 whether to address a plethora of ecological questions (e.g., Wright, this volume), inform and validate
58 ecosystem models (e.g., Malhi et al., this volume), or assist with interpreting remotely acquired data
59 (e.g., Chave et al. 2019, Duncanson et al. 2019, Phillips et al. 2019). Yet the very features that enhance
60 tropical forests' ecological value, such as remoteness, diversity and high rainfall, make fieldwork
61 challenging. Tropical forest science and scientists from forest-rich countries are often under-resourced
62 and academically marginalised. Often colonized from afar and distant from economic centres, tropical
63 nature and many who explore it remain peripheral to national and global academic and political
64 priorities.

65
66 The focus of this paper is specifically about the power of new collaborative networks to transform
67 tropical forest science – *what* we do, *how* we do it, and eventually *who* does it - to understand tropical
68 forest functioning and dynamics over large temporal and spatial scales. Conceived and funded starting
69 in South America in 1999 (RAINFOR, Malhi et al. 2002) and later adapted to Africa (AfriTRON, Lewis
70 et al. 2009) and Southeast Asia (T-FORCES, Qie et al. 2017) our approach encourages international
71 grassroots initiatives and links them with standardized field methods and data management. Now, with
72 ForestPlots.net (Lopez-González et al. 2011, 2015) we support multiple networks with cyber-
73 infrastructure that enables tropical scientists to do together what was previously impossible alone.
74 Providing tools to ensure tropical scientists can manage, share and analyse their data themselves,
75 ForestPlots.net is a global platform where data originators are in control and free to collaborate, support,
76 or lead as much as they like. However, while much has been accomplished the wider challenges still
77 run deep. Our aim of supporting the best possible science within a model of equitable access to data
78 and other resources, remains as much an aspiration as a claim of achievements already made.

79
80 Here we first review how the continental networks and ForestPlots.net emerged, in terms of
81 collaborators, institutions, people and plots. Next we focus on key scientific achievements of the
82 combined networks, including a comprehensive understanding of the variation in biomass carbon stock,
83 growth rates, and carbon residence time among continents. We also review multiple discoveries
84 concerning large-scale changes over time, with insights emerging from hundreds of permanent plots
85 that have transformed our understanding of the role that tropical forests play in the biosphere. Finally,

86 we return to the challenges of building and sustaining long-term science networks in the tropics and
87 outline key priorities for the future.

88

89 **1. Network Development**

90 Tropical research plots that tag, measure, identify and follow forests tree-by-tree have existed for
91 decades. They long precede any continental or global network, but no plot survives since before 1939
92 and few predate 1970. The earliest efforts were closely connected to the imperial- and post-imperial
93 projects of European nations. As such, these were largely motivated by questions of timber inventory
94 and wood production, and only later diversity and wider ecological questions. The very first permanent
95 sample plots we are aware of in the tropics were installed in 1857 by the German forester Brandis, who
96 worked for the British in Burma (now Myanmar) and later other parts of India (Dawkins and Philip,
97 1998). **In India** a few extant Forest Department plots date to 1939 (Pomeroy et al. 2003). Important
98 early work in **Southeast Asia** included plots installed by Don Nicholson and J.E.D. Fox in the 1950s
99 through to the 1970s, as well as Peter Ashton since the 1960s and John Proctor since the 1970s. **In**
100 **Africa**, early permanent plots include those installed by William Eggeling in Uganda in the 1930s.
101 Among plots surviving today are one in Mpanga Forest, Uganda, set up by Alan Hamilton in 1968, and
102 those established by Mike Swaine in Ghana and Hans Woell in Liberia in the 1970s, and later plots by
103 Jan Reistma and Lee White (Gabon), Bonaventure Sonké (Cameroon), Kofi Affum Baffoe (Ghana),
104 and Henri-Félix Maître and colleagues (Gabon, Congo, C.A.R.). **In Australia**, North Queensland saw
105 the first plot sampling, for timber, in the 1930s, with many sites from the 1970s still maintained today
106 by the national science agency (CSIRO). Separately Joe Connell, co-originator of the influential Janzen-
107 Connell hypothesis, installed and expanded long-term ecological plots in 1963.

108

109 **In the tropical Americas**, T.A.W. Davis and Paul Richards installed ecological plots in Guyana in the
110 1930s (Davis and Richards 1933) but these do not survive, while Frank Wadsworth established long-
111 term plots in Puerto Rico's subtropical forests starting in 1943 (e.g. Drew et al. 2009). In Suriname,
112 Schulz and colleagues established silvicultural studies in the 1950s and 60s that were used to design the
113 CELOS Management System (Werger 2011). Neotropical ecological plots that persist today include
114 many in Venezuela by Jean-Pierre Veillon in the 1950s, 60s and 70s (Vilanova et al. 2018) and Rafael
115 Herrera, Ernesto Medina and colleagues in the 1970s, as well as a few in Brazilian Amazonia by João
116 Murça Pires, H. Dobzhansky and G.A. Black and later Ghilleen Prance, and several in Costa Rica since
117 1969 by Diana and Milton Lieberman. Elsewhere, Alwyn Gentry, John Terborgh, Terry Erwin, Gary
118 Hartshorn, David Neill and Rodolfo Vásquez set up the first long-term plots in western Amazon in the
119 late 1970s and 80s (Gentry 1988a, Monteagudo et al. 2020). Eastern and central Amazon plots survive
120 established by Ima Vieira and Rafael Salomão in Pará (Salomão 1991, Pires and Salomão 2000), Tom
121 Lovejoy, Niro Higuchi and colleagues near Manaus, Henri-Félix Maître in French Guiana, and by
122 Marcelo Nascimento and colleagues in Roraima. The earliest extant plots in southern Amazonia
123 originate with Tim Killeen, Luzmila Arroyo, Beatriz Marimon and José Roberto Rodrigues. The first
124 long-term tropical large plot was established in Costa Rica (Hubbell 1979), which represented a separate
125 innovation that permitted plot-level analysis of multi-species demography, followed soon after by the
126 first 50-ha plot in Panama (Hubbell and Foster 1983, Wright this volume) and later developments by
127 the Smithsonian Institution and the ForestGEO network (e.g. Anderson-Teixeira et al. 2015).

128

129 RAINFOR (Red Amazónica de Inventarios Forestales) is the first international tropical forest network
130 encompassing hundreds of long-term plots. At root, RAINFOR was inspired by Alwyn Gentry, a
131 virtuoso tropical botanist who established the first globally standardized floristic inventories. In the
132 1970s Gentry developed a 0.1-ha sampling design to rapidly inventory diversity in species-rich tropical
133 forests, capturing all stems ≥ 2.5 cm diameter. He and his colleagues applied it throughout the tropical

134 Americas as well as parts of Africa, India, Southeast Asia, Australasia, and some northern and southern
135 temperate forests. By the time of his untimely death at the age of 48 in 1993, Gentry had completed 226
136 of these samples, comprising an inventory of thousands of tree and liana species including many new
137 to science. His legacy lives on in multiple ways. After studying with Walter Lewis and recruited by
138 Peter Raven in the early 1970's, Gentry was a key figure in the Missouri Botanical Garden's golden age
139 of tropical botany. He collected more than 80,000 plant specimens, approximately half of which are
140 tropical trees and lianas. He pioneered a new approach to the challenge of identifying plants in the
141 world's most diverse forests (Gentry and Vásquez 1993) which has inspired generations of botanists
142 throughout Latin America. Perhaps most importantly, it was Gentry who embodied the ambition of
143 combining efficient ecological sampling with high-quality identifications and replicating these to create
144 highly distributed measurements of the world's forests (e.g. Gentry 1988b, Clinebell et al. 1995, Phillips
145 and Miller 2002, Phillips and Raven 1997). He also established permanent plots (Gentry 1988a) that
146 feature in the first continental and pan-tropical analyses of forest carbon and dynamics (Phillips and
147 Gentry 1994, Phillips et al. 1994, Phillips et al. 1998), which in turn led to the creation of RAINFOR
148 (Malhi et al. 2002, López-Gonzalez and Phillips 2012) and its protocols (e.g. Phillips et al. 2002).
149 Originating in 1999 from a small nucleus of researchers and plots and supported by EU funding to
150 Brazil's LBA initiative and UK scientists, RAINFOR grew to tackle the challenge of analysing
151 Amazonian forests and climate responses tree-by-tree from the ground-up. By bringing different groups
152 together RAINFOR facilitated the development of long-term international collaborations to measure
153 and understand not only forest dynamics and diversity but also biogeochemistry and carbon fluxes.

154

155 While RAINFOR has grown steadily, other plot networks later emerged with complementary foci in
156 South America. Some are daughter initiatives to RAINFOR, others were formed separately, but most
157 share a similar ethos and strongly overlapping protocols. To the extent that they can be combined
158 together these networks represent an impressive Observatory for Neotropical Forests. Below (Table 1)
159 we report key information about many vibrant networks worldwide that specifically contribute to
160 ForestPlots.net, while here we briefly enumerate national and international neotropical networks, the
161 majority of which ForestPlots.net supports. These include (with dates when plots were censused or
162 consolidated as a network) Tropical Ecology Assessment and Monitoring (TEAM, 2002), Amazon Tree
163 Diversity Network (ATDN, 2003), Programa de Pesquisa em Biodiversidade (PPBio, 2004, Brazil),
164 Red Colombiana de Monitoreo de los Bosques (COL-TREE, 2004), Global Ecosystems Monitoring
165 (GEM, 2010; Malhi et al. this volume), Latin American Seasonally Dry Tropical Forest Network
166 (DryFlor, 2012), Red de Investigación y Monitoreo del Bosque Seco Tropical en Colombia (Red BST-
167 Col, 2014), Secondary Forest Network (2ndFOR, 2015), Peru Monitoring Network (MonANPerú,
168 2017), sANDES (Tree Diversity, Composition and Carbon in Andean Montane Forests, 2019), and Red
169 de Bosques Andinos (RBA, 2020), as well as global networks and meta-networks including ForestGEO
170 (Anderson-Teixeira et al. 2015), GFBI (Steidinger et al. 2019), sPlot (Bruehlheide et al. 2019), FOS
171 (Schepaschenko et al. 2019) and TmFO in logged forests (Sist et al. 2015). Each of these has notable
172 achievements of their own and at the time of writing this in 2020 almost all have active research
173 programmes.

174

175 In Africa, our early networking focussed on assessing whether there were similar patterns of changes
176 in carbon stocks as observed in South American forests and the causes of such changes. Efforts began
177 in 2001 to recensus many of the earlier plots installed in post-independence Africa (UK funding to O.
178 Phillips, Y. Malhi and S. Lewis), which were later formalised as the African Tropical Rainforest
179 Observation Network (AfriTRON; Lewis et al. 2009), and catalysing a tripling of the African multi-
180 census plot dataset over the last decade (Hubau et al. 2020). These span 12 African countries with moist
181 forests from Sierra Leone in the west to Tanzania in the east. Like RAINFOR in Amazonia, AfriTRON

182 pools expertise and data to tackle long-term, large-scale questions relating to the ecology and
183 biogeochemistry of tropical forests. Networks sharing a similar ethos with programmes in Africa now
184 include TEAM, DynAfFor (Gourlet-Fleury et al. 2013), TmFO and ForestGEO. Recently, the
185 SEOSAW (Ryan et al. in review) and AfriMont networks have been established, extending long-term
186 plots into the extensive southern woodlands and savannas and Africa's distinctive montane forests.

187

188 Our work in Southeast Asia began in 2001 to assess forest carbon balance and later developed into a
189 network once Lan Qie undertook fieldwork and networking. European Research Council investment
190 (T-FORCES 2012 grant to Phillips, Malhi and Lewis) enabled intensive campaigns to develop long-
191 term plot networking in Borneo (Qie et al. 2017), and supported African recensuses (Hubau et al. 2020).
192 While smaller than its Amazonian and African counterparts the Asian network builds on plots installed
193 by a number of foresters and botanists as long as 60 years ago. Critically, RAINFOR, AfriTRON, T-
194 FORCES and TmFO use the same field and analytical protocols.

195

196 **Insert Table 1 here: Table 1. Networks contributing to ForestPlots.net (September 2020).**

197

198 How can we combine the different strengths of these and other initiatives to maximise their impact on
199 science and society? To achieve this requires shared data management tools and horizontal
200 organisational structures that foster leadership by tropical scientists. Our plot data management scheme
201 was originally conceived in 2000 as a desktop database to support the first RAINFOR analyses of spatial
202 variation in wood density, biomass, productivity, and changes in biomass over time (Baker et al. 2004a,
203 b; Malhi et al. 2004). This was expanded to draw together inventory data from more than 100 sites in
204 Amazonia and then African forest plots, including some of the longest running monitoring sites
205 worldwide (Peacock et al. 2007).

206

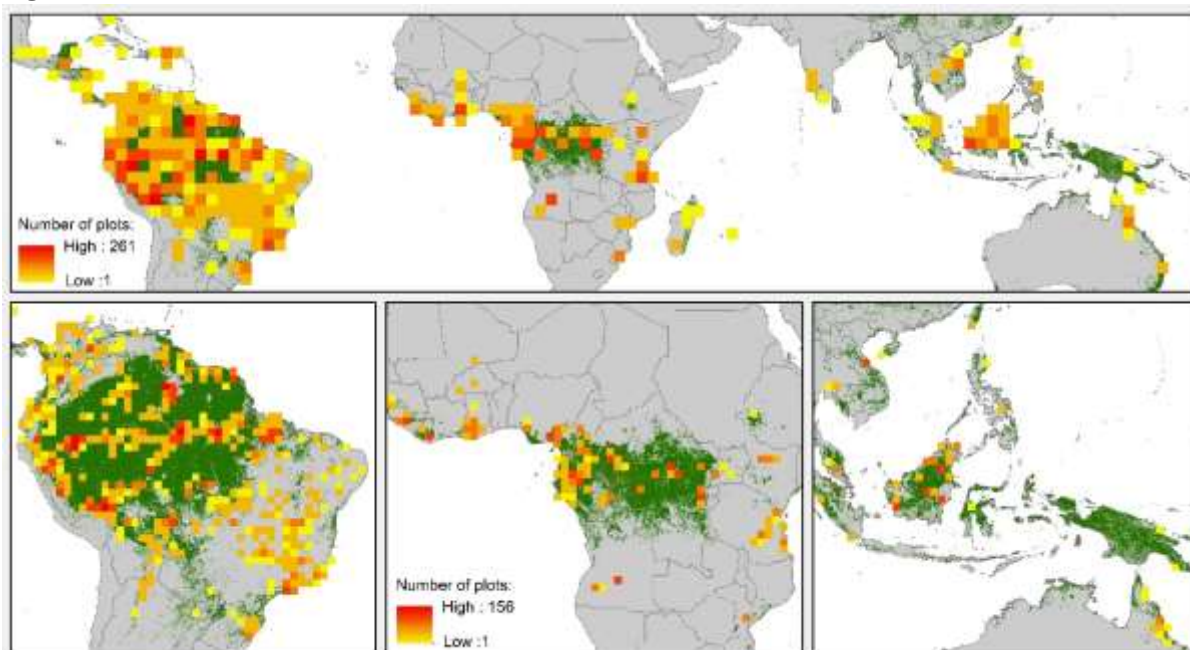
207 Since 2009 we have developed a Structured Query Language web application with sophisticated
208 programming, providing a one-stop platform to a growing global community of contributors and users
209 (López-Gonzalez et al. 2011). Now, ForestPlots.net supplies ecological informatics to colleagues in
210 scientist-led networks from 54 countries working across 44 tropical nations (Fig. 1). Key advances in
211 this platform include the ability to manage complex time-series data, to track species linked to high-
212 quality botanical records, and to analyse records with common BiomasaFP R-language protocols
213 (López-Gonzalez et al. 2015). While focussed on species identity, tree growth, mortality and carbon
214 dynamics, ForestPlots.net encompasses many related forest attributes including lianas, soils, and plant
215 traits.

216

217 At their heart long-term plots are an intensely human enterprise and so we also document the personal
218 contributions to plot establishment and continued monitoring. By tracking who did what, and when, we
219 also honour the inter-generational aspect of plots that allows modern analysts to stand on the shoulders
220 of giants. With ForestPlots.net data contributors retain control and are able to manage, share and analyse
221 their records using a common toolset. If new projects requesting to use their data are proposed they can
222 agree to collaborate, or not, as they wish. Contributors often propose their own multi-site projects.
223 ForestPlots.net can provide DOIs to datasets, further ensuring that contributors are properly
224 acknowledged. Developing this functionality has supported a surge in multi-site and multi-national
225 analyses that are increasingly initiated by scientists from the tropics, gradually supplanting the
226 traditional model where researchers from the Global North lead. In sum, ForestPlots.net enables the
227 level of control and collaboration that individual researchers wish for while underpinning network and
228 multi-network integration. In turn, this is empowering data owners and networks and helping to
229 transform the face of tropical ecological science.

230
231
232

Figure 1. Current extent of ForestPlots.net

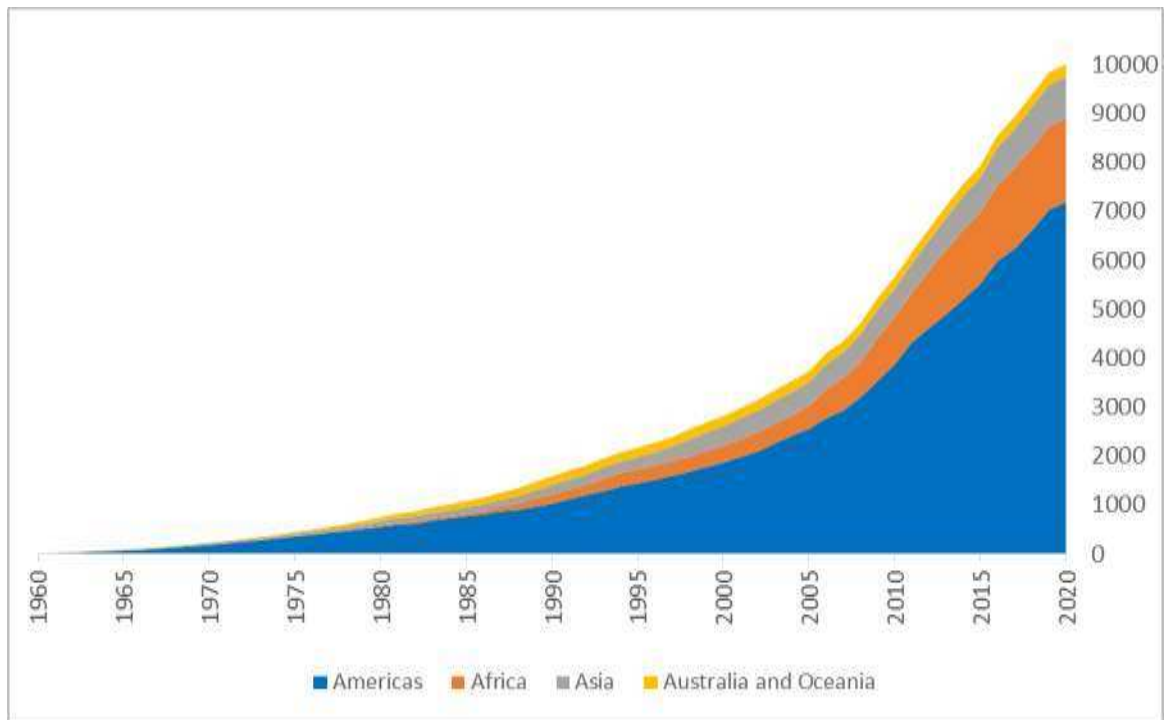


233
234
235
236
237
238
239
240
241
242

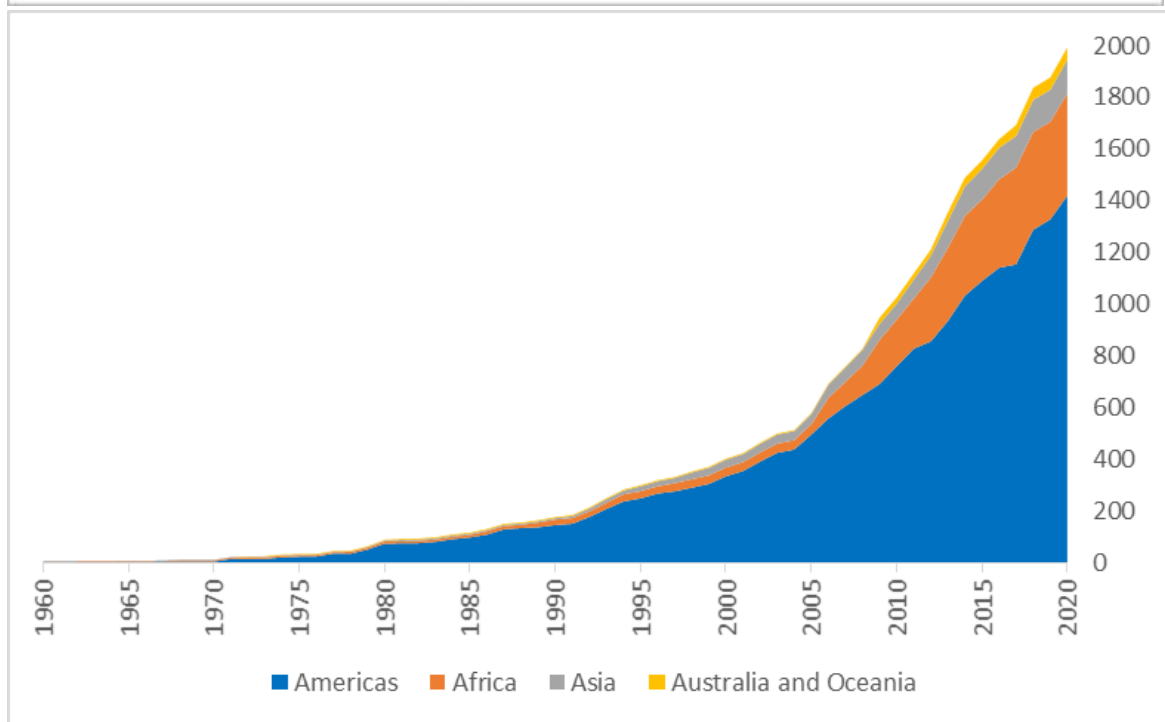
Top: Pantropical plot sampling density per 2.5 degree square with the 4.062 multiple- and single-inventory plots hosted at ForestPlots.net. These plots contribute to 24 networks including RAINFOR, AfriTRON, T-FORCES, ATDN, BIOTA, COL-TREE, FATE, GEM, Nordeste, PELD, PPBio, RAS, RBA and SEOSAW. Forest cover based on the Global Land Cover 2000 database (JRC, 2003) with tree cover categories: broad-leaved evergreen; mixed leaf type; and regularly flooded. Our plots also extend into neotropical and African savannas; **Bottom:** The same plot sampling but displayed at higher-resolution (1-degree grid cells) for each focal continent, South America, Africa, and Southeast Asia and Australia.

243
244
245
246
247
248
249
250
251
252
253

The networks and ForestPlots share a 20-year history, but as already seen the history of plot monitoring is much longer. The first recorded census in ForestPlots.net dates from 1939 in Budongo, Uganda. Forty years later, 676 censuses had been completed from 90 plots, but since 1979 fieldwork has accelerated greatly with more than 10,000 censuses completed across 4,000 plots by 2020 (Fig. 2a). This acceleration is reflected by the growing community of contributors, which by 2020 had reached 2,000 individuals (Fig. 2b). ForestPlots.net itself has grown steadily both in terms of censuses uploaded and in outputs (Fig. 3). The neotropics dominate much of this inventory and monitoring effort as well as the growth of ForestPlots.net in particular, but contributions from Africa and other continents are increasing (Figs. 2, 3). Scientific outputs emerging from this collective effort have always spanned local to global scales but now have an increasingly pan-tropical theme (Fig. 3b).



254



255

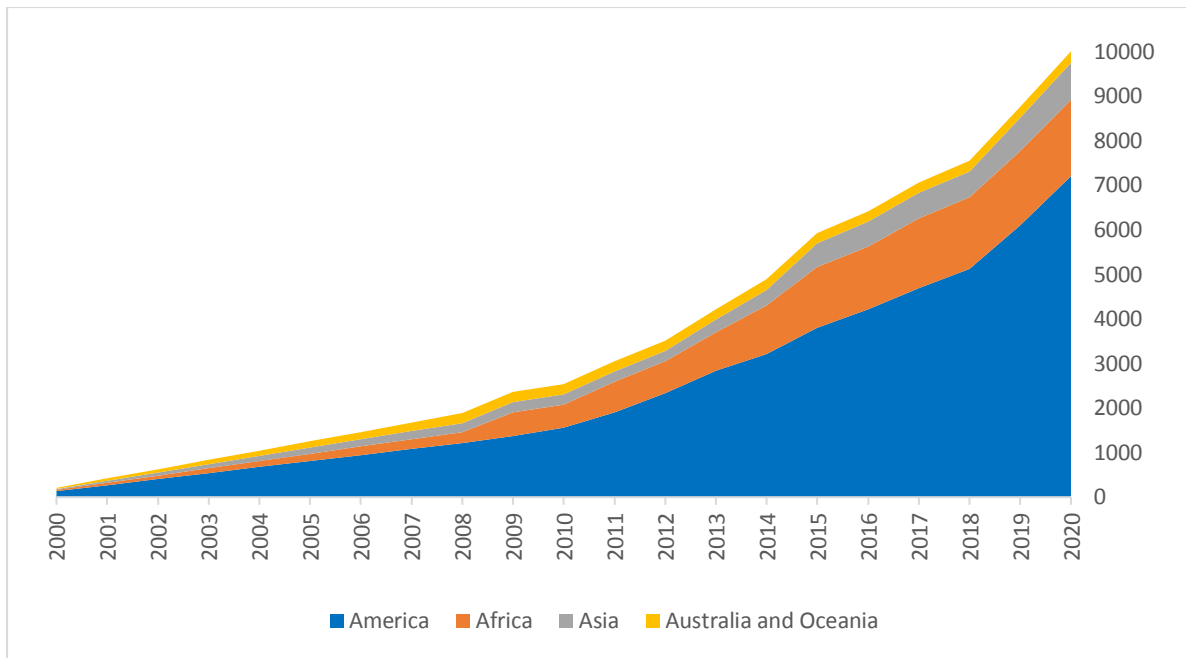
256 **Figure 2. Growth of pan-tropical forest monitoring since the mid-twentieth-century.**

257

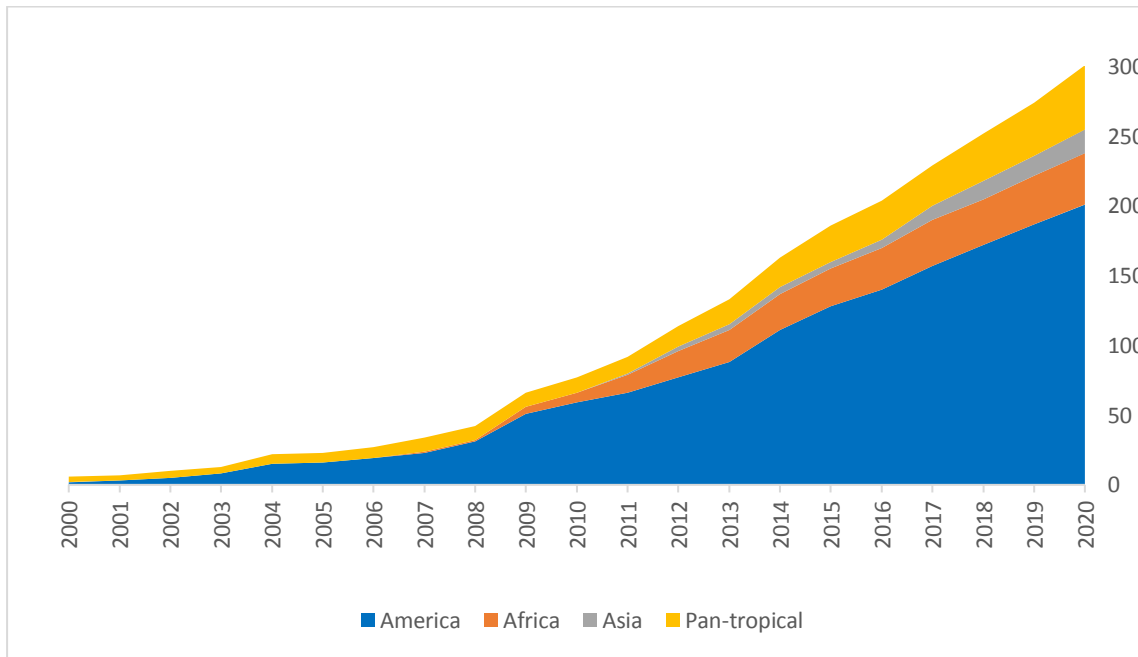
258 *Top:* Plot-censuses curated at ForestPlots.net by date of census;

259 *Bottom:* Cumulative number of contributors to ForestPlots.net by date of first recorded fieldwork. Growth was
 260 slow following the first census in 1939, only reaching 100 censuses by 1969. For early censuses, records of field
 261 team personnel and leaders are often sparse or absent. Note that ‘contributors’ are defined inclusively to reflect
 262 members of indigenous communities, protected area guards, parataxonomists, students, and technicians, as well
 263 as principal investigators, botanists, and other specialists.

264



265
266



267
268
269
270
271
272
273
274
275
276

Figure 3. Growth of ForestPlots.net and its contributing networks since 2000.

Top: Cumulative upload of unique plot censuses to ForestPlots.net by date of upload (pre-2009 uploads to pre-internet versions allocated evenly back to network beginnings);

Bottom: Cumulative peer-reviewed scientific articles based on network plots, excluding research based on single-plot studies.

277 2. Environmental Representation

278

279 While it is not possible to intensively sample the whole tropical forest extent, in practice RAINFOR,
280 AfriTRON and T-FORCES have managed to cover almost the entire climatic and geographic space
281 across the humid tropics with permanent plots (Fig. 4a) as well as extensively sampling the biome space
282 of the terrestrial tropics except for semi-arid biomes (Fig. 4b). Within each continent coverage has been
283 focused on the moist tropical lowlands with sampling extending into montane and drier forest systems
284 most effectively in South America (Fig 4c). Plots also cover the complex edaphic variation present in
285 Amazonia (Quesada et al. 2012) where they encompass landscape-level variability within old-growth
286 forests (Anderson et al. 2009, 2010). This effective representation of structurally intact moist forests
287 provides good support for large-scale inferences from what is, inevitably, a limited sample of the
288 domain. It is important to note that many tropical countries lack statistical inventories of forests, let
289 alone long-term monitoring or historical baselines, so research plots fill critical gaps in global and
290 national observations.

291

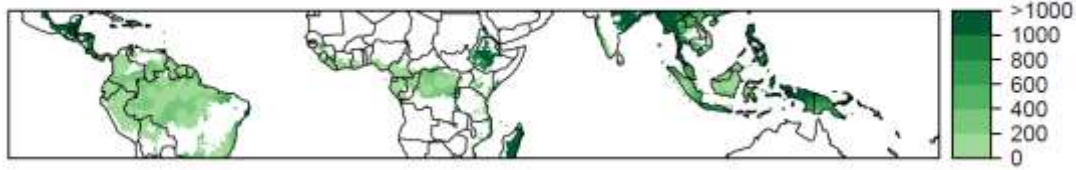
292 Yet significant work remains to be done to increase representativeness, better understand impacts of
293 geological and edaphic variation, and expand sampling in remote areas especially in parts of Amazonia,
294 the central Congo Basin, and New Guinea (c.f. Brearley et al. 2019, Fig 4. below). Fuller environmental
295 coverage can help networks address challenges such as monitoring of protected area effectiveness
296 (Baker et al. 2020) and providing calibration-validation of Earth Observation space-borne sensors
297 (Chave et al. 2019). Beyond the lowland humid tropics, special effort is also needed for long-term,
298 ground-based monitoring in particular environments. Expansion is especially required for: (i) secondary
299 forests and those impacted by disturbance events such as logging, fragmentation, and wildfires (e.g.
300 Chazdon et al. 2016, Elias et al. 2020, Villela et al. 2006); (ii) montane forests, which harbour
301 exceptional concentrations of endemism and are at great risk of biodiversity loss due to deforestation
302 and climate change and therefore represent urgent conservation opportunities (e.g. Malizia et al. 2020);
303 (iii) Asian dry forests, and (iv) the wider extent of tropical dry forest and savanna biomes, which are
304 home to distinctive biotas and significant carbon stocks of their own (DRYFLOR 2016, Pennington et
305 al. 2018). ForestPlots.net partner groups are expanding research and monitoring in such critical areas
306 beyond the structurally intact lowland forests that have been the main focus of RAINFOR and
307 AfriTRON.

308

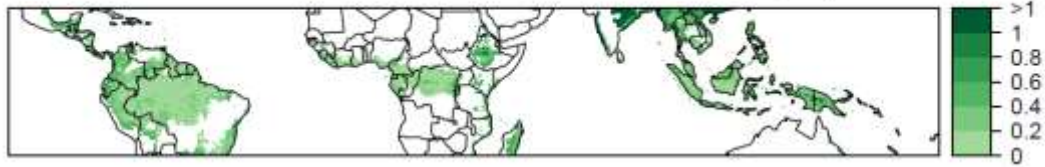
309

310

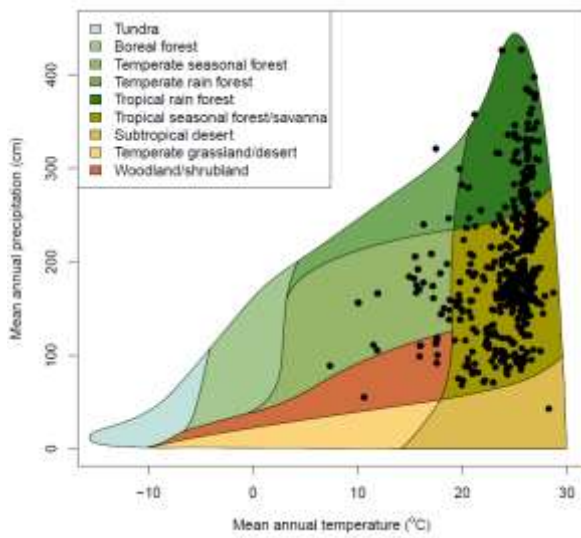
1. Geographic distance (km)



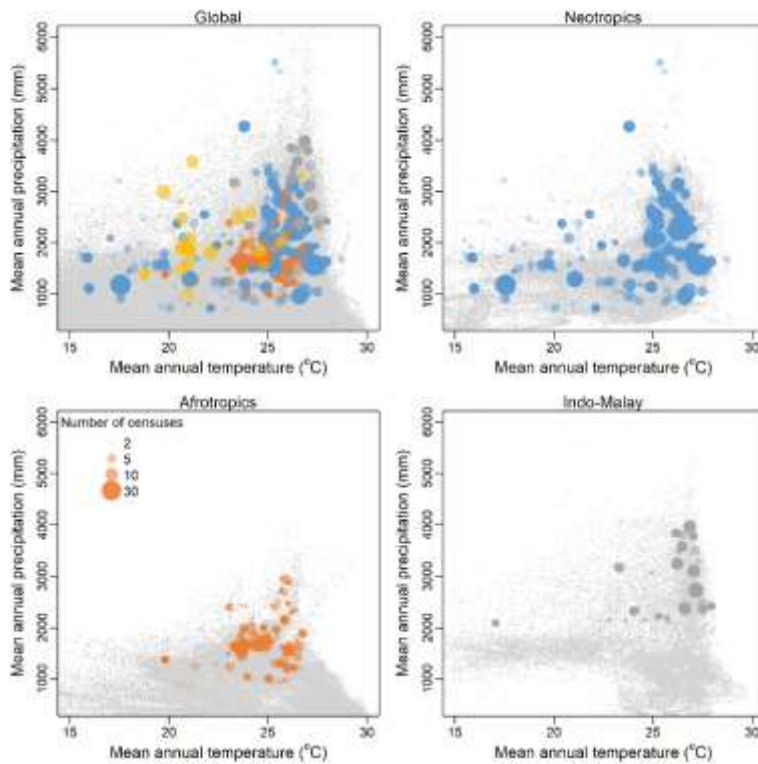
2. Environmental distance (Euclidean distance [SD])



311



312



313

314 **[Previous Page] Figure 4. Network coverage of geographical and climate space**

315 Analyses include >1500 permanent plots managed at ForestPlots.net. **(a) Top panels:** (1) Geographic distance
316 between multi-census plots across the humid tropical forest biome; and (2) Minimum climate dissimilarity
317 (Euclidean distance on variables scaled by their standard deviation, accounting for mean annual temperature,
318 temperature seasonality, mean annual precipitation and precipitation seasonality), where for each cell
319 environmental distance represents how dissimilar a location is to the most climatically similar plot in the network.
320 Note that some poorly sampled areas are mostly deforested, such as Central America, Madagascar, and much of
321 tropical South and Southeast Asia. The baseline map depicts WWF terrestrial ecoregions (Olson et al. 2001). **(b)**
322 **Middle panel:** Tropical plots displayed in global biome space (Whittaker diagram), showing the main
323 concentration of plots from lowland wet through to moist forests and savanna, with some samples in cooler
324 montane climates. **(c) Lower panels:** Plots displayed within tropical humid and sub-humid climate space, with
325 plots displayed colour-coded by continent and symbol size corresponding to total census effort. Note the important
326 differences in baseline climatic conditions between continents.

327

328 **3. Discovery: Forest Ecology across the Tropical Continents**

329 RAINFOR, AfriTRON and T-FORCES plots have generated ecological and biogeographical insights
330 that have only been achievable via large-scale collaboration. RAINFOR has revealed that Amazonian
331 forests differ substantially from one another, even those that share essentially identical climates. For
332 example, basal-area weighted wood density of northeastern forests is 50% greater than that of southern
333 and western forests. This reflects floristic differences (Baker et al. 2004, ter Steege et al. 2006, Honorio
334 Coronado et al. 2009, Patiño et al. 2009), which, in turn, are associated with large differences in forest
335 dynamics. Stem turnover is twice as fast in the west and south as the east (Phillips et al. 2004) due to
336 younger soils with poorer structure providing less rooting support (Quesada et al. 2012, Schiatti et al.
337 2016) and in spite of only modest productivity differences (Malhi et al. 2004, 2014). In contrast,
338 biomass in north-eastern Amazonia is higher than elsewhere due to the reduced mortality risk and hence
339 bigger trees and denser wood (Baker et al. 2004, Malhi et al. 2006, Marimon et al. 2014, Pallqui et al.
340 2014, Johnson et al. 2016, Alvarez et al. 2018, Phillips et al. 2019).

341 In Africa, AfriTRON plots also show that species-driven differences in wood density prevail at large
342 scales. In mature forests, soil-related compositional differences cause significant variation in basal-area
343 weighted wood density. Forests on younger and more fertile acrisols and cambisols have 10 and 20%
344 lighter wood than those on arenosols and histosols, respectively (Lewis et al. 2013). Similarly to
345 Amazonia, African forests growing on older, less fertile soils have higher biomass (Lewis et al. 2013).
346 Local and regional variation in soils and forest attributes are important within both continents but the
347 key difference is that only Amazonia has clear continental-scale gradients in wood density, due to the
348 powerful influence of Andean orogeny in the west. This leads to young, geologically dynamic
349 landscapes with fertile, less-developed soils, influencing speciation, immigration and extinction, and
350 contrasts with the ancient, stable Brazilian and Guianan Shields of the east.

351

352 Large-scale analysis thus reveals how soils and species help control the carbon that tropical forests
353 store. This has implications for monitoring carbon stocks using remotely-sensed data. In tropical forests
354 neither soil nor tree composition is easily perceived from space. For example, RAINFOR plots show
355 that LiDAR-derived biomass estimates of Amazonian forests are compromised because they do not
356 perceive the critical large-scale floristic gradients (Mitchard et al. 2014). Accounting for such
357 limitations by relating plot-derived woody density and allometry to LiDAR sampling shows that plots
358 greatly improve biomass maps (Mitchard et al. 2014, Avitabile et al. 2016). Thus the role of soils and

359 species composition in affecting biomass carbon is a key reason why ground data are essential for
360 mapping forests (Chave et al. 2019). While Earth Observation has great benefits in terms of spatial
361 coverage and ability to update frequently the incorporation of plot-derived compositional data greatly
362 improves our understanding of carbon storage patterns over large scales.

363

364 When networks using the same protocols are combined it is also possible to discover and explore
365 variation between continents too. Common protocols have revealed major pan-tropical variation in
366 vertical structure, including tree height and height-diameter allometry (Feldpausch et al. 2011) which
367 have impacts on biomass (Banin et al. 2012; Feldpausch et al. 2012; Sullivan et al. 2018). African
368 forests average one-third higher biomass per unit area than Amazon forests (Lewis et al. 2013), yet have
369 roughly one-third *fewer* stems >10 cm diameter per unit area. This may be driven by systematically
370 lower tree mortality in these forests (Hubau et al. 2020, Sullivan et al. 2020). Similarly, comparing
371 climatically and edaphically similar forests in parts of Borneo with northwest Amazonia reveals that
372 Bornean forests produce much more wood, with trees growing up to 50% more rapidly than those of
373 Amazonia. This suggests that differences in phylogenetic composition of tree communities, especially
374 the dominance of the dipterocarp family in tropical Asia (Corlett and Primack 2011), determine the
375 efficiency with which atmospheric carbon is converted to woody carbon (Banin et al. 2014).

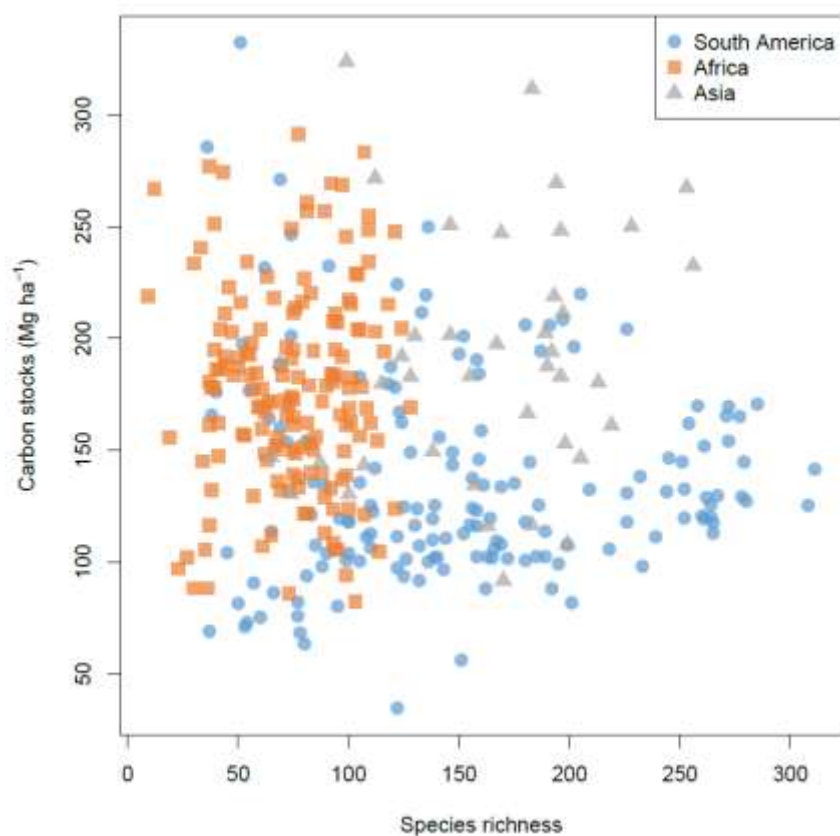
376

377 Tree species composition and dominance strongly control forest function within continents too. For
378 example, a recent RAINFOR study discovered that Amazon woody productivity is enhanced in more
379 phylogenetically diverse forests (Coelho de Sousa et al. 2019). Yet while Amazonian forests are very
380 diverse, remarkably few species dominate in terms of stems (ter Steege et al. 2013, research led by the
381 ATDN network), while biomass stocks and woody productivity are dominated by a different set of
382 species (Fauset et al. 2015, RAINFOR network). Evidence also suggests that some of these
383 ‘hyperdominants’ may have been long favoured by indigenous people as part of wider human influences
384 on old-growth Amazon forests (Levis et al. 2017, Oliveira et al. 2020). These and other studies show
385 that identity matters. Dominant species and their evolutionary history thus affect forest ecology and
386 forest values, whether in terms of storing carbon, converting solar energy into wood or sustaining whole
387 cultures.

388

389 These insights show that two of the defining challenges of the twenty-first century, climate change and
390 biodiversity loss, are closely linked. How then do we best devise conservation strategies to achieve the
391 targets of biodiversity protection and climate mitigation and adaptation? Can we rely for example on
392 carbon conservation via schemes like REDD+ to protect tropical diversity too? The answers to these
393 questions depend on the relationship between diversity and carbon storage but assessing this has been
394 challenging due to the scarcity of inventories in which both carbon stocks and species identifications
395 have been reliably quantified. By combining RAINFOR, AfriTRON and T-FORCES plots we found
396 that for tropical trees diversity-carbon storage relationships barely exist at all (Sullivan et al. 2017, Fig.
397 5). For example, South America, the continent with the richest forests, actually stores the least carbon
398 per hectare, while within continents there is no association. Independent data from the RAS network
399 data support this, showing that strong carbon-biodiversity relationships are only found in disturbed and
400 secondary forests but not old-growth (Ferreira et al. 2018). As mature forests exhibit all possible
401 combinations of tree diversity and carbon stocks it is clear that both need to be explicitly considered to
402 protect the climate and biodiversity. In addition, long-term carbon storage is threatened by defaunation
403 of large-bodied frugivores, often essential for dispersing large-seeded heavy-wooded tree species (Peres
404 et al. 2016). *We cannot simply focus on carbon and achieve biodiversity conservation, and vice versa.*

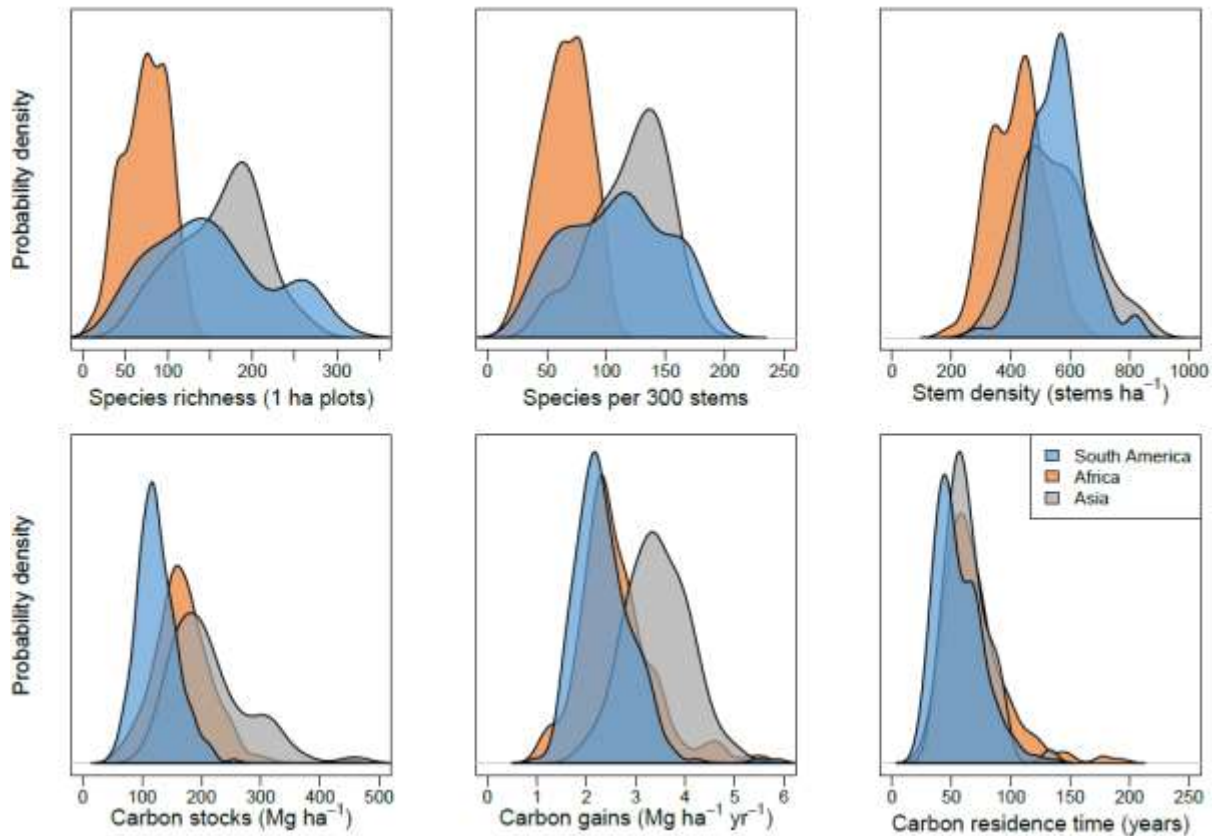
405



406
407
408
409
410
411
412
413

Figure 5. Pantropical forest carbon storage is independent of species richness.

There are no clear within-continent or pantropical relationships between carbon stocks and tree species richness per hectare in structurally intact old-growth tropical forests. Figure adapted from Sullivan et al. 2017.



414

415

416 **Figure 6. Tropical continental macroecology**

417

418 Remarkable continental differences in species richness, stem density and carbon stocks emerge among lowland
 419 tropical moist forests when densely-sampled plot networks are combined. Graphics depict probability densities
 420 such that the whole area for each continent sums to 1. Note that the y-axis scale for each variable thus *itself varies*
 421 *depending on the range of the x-axis*: for continents with larger variation in x, the probability density at any point
 422 along the y axis is correspondingly smaller. Analysis adapted from Sullivan et al. 2017 and 2020.

423

424 When network data are combined surprisingly large and coherent continental-level differences emerge
425 (Fig. 6). African forests are remarkably species-poor at the 1-ha scale whereas South American and
426 Asian forests are more than twice as rich on average, but also vary much more in species-richness and
427 diversity. The very richest forests in the world are located in parts of Western Amazonia, vindicating a
428 claim by Gentry (Gentry 1988a, b) from more than three decades ago. African forests have many fewer
429 stems than their Asian and South American counterparts, but South American forests have considerably
430 less biomass. In terms of carbon gains Borneo's forests are outliers, being up to twice as productive as
431 other forests. Yet it is in South America where woody carbon turns over fastest. Fully half the carbon
432 in neotropical trees has been replaced since 1970.

433

434 Overall these comparisons reveal remarkable differences between the tropical forest continents that are
435 not strongly driven by rainfall, temperature or soil (Sullivan et al. 2020). The implication is that other
436 factors related to the evolutionary and historical happenstance of each continent matter. We draw three
437 higher level conclusions from this. *First, global-scale ecological modelling ignores biological*
438 *composition at its peril. Second, if there was ever any doubt, each continent clearly needs its own robust*
439 *research and monitoring programme. And third, each region likely responds to climate change in its*
440 *own, idiosyncratic way.*

441

442

443 **4. Discovery: Tropical Forest Change**

444 The single most significant scientific impact of these multiple permanent plot networks has been to
445 transform our understanding of how tropical forests function in the Earth system.

446

447 As the most diverse and carbon-rich tropical biome, the fate of humid tropical forests will impact the
448 future of all life on Earth. Until quite recently it was axiomatic that old-growth tropical forests are at
449 equilibrium when considered over sufficiently large scales, and that any changes observed at smaller
450 scales are driven by natural disturbance-recovery processes. However, large-scale imbalances observed
451 in the global carbon balance have cast doubt on this assumption (e.g. Taylor and Lloyd 1992). Over
452 time, network analyses have helped to recast our understanding of contemporary old-growth tropical
453 forests as being non-stationary systems. Their carbon, biodiversity and ecosystem processes are widely
454 recognised as dynamic and continually responsive to multiple anthropogenic drivers (e.g. Lewis et al.
455 2004b, Pan et al. 2011, Malhi et al. 2014, Levis et al. 2017, Mcdowell et al. 2018, Reis et al. 2018). Key
456 discoveries at this intersection between global change science and forest ecology and biodiversity
457 include:

458

459 **(1) A pantropical increase in tree turnover rates, representing the first evidence for a widespread**
460 **impact of global anthropogenic change on old-growth tropical forests** (Phillips and Gentry 1994).

461 The finding that these forests were changing was controversial at the time - let alone the inference that
462 global drivers were responsible - and contradicted established ecological orthodoxy. The debate that
463 ensued helped generate new questions and analyses (e.g. Sheil 1996, Phillips and Sheil 1997) and
464 address potential biases (e.g. Sheil 1995, Condit 1997, Lewis et al. 2004a, Gloor et al. 2009, Espirito-
465 Santo 2014, Kohyama et al. 2019). A quarter of a century of research since then has rejected the notion
466 that 'intact' tropical forests are unaffected by atmospheric changes and reinforced the central concept
467 that all tropical forests are being influenced by a suite of large-scale contemporary anthropogenic
468 drivers.

469

470 (2) **Biomass dynamics have also accelerated in Amazonia.** In parallel with the increases in stem
471 dynamics, as RAINFOR grew it became clear that carbon fluxes via biomass growth and mortality were
472 also increasing. Moreover, the increased gains in stems (recruitment) and biomass (woody productivity)
473 clearly preceded increases in stem and biomass losses (mortality) (Lewis et al. 2004b, Phillips et al.
474 2004, 2008, Brienen et al. 2015, Nogueira et al. 2018). The mechanism underlying this acceleration of
475 forest dynamics must therefore involve stimulated productivity via increased resources for plant growth,
476 rather than direct stimulation of tree mortality such as by drought (Lewis, Phillips and Malhi 2004).

477
478 (3) **The Amazon forest carbon sink.** In conjunction with faster growth and turnover, the biomass
479 density of Amazonian forests has increased (Phillips et al. 1998, Baker et al. 2004, Pan et al. 2011).
480 Old-growth Amazonian forests have absorbed (net) atmospheric carbon for at least three decades now
481 (Brienen et al. 2015), providing a true “subsidy from nature” with flux magnitude matching or
482 exceeding net losses from neotropical deforestation (Aragão et al. 2014, Gatti et al. 2014). Thus,
483 monitoring networks have shown that most Amazonian nations are on balance *not* net emitters of carbon
484 (Espírito-Santo et al. 2014, Phillips and Brienen 2017). The location, magnitude and persistence of this
485 old-growth carbon sink has important implications for guiding approaches to meeting nationally
486 differentiated targets for controlling climate change (Vicuña Miñano et al. 2018).

487
488 (4) **The African forest carbon sink.** The AfriTRON network discovered a long-term net biomass
489 increase similar in magnitude to that of the Amazon in the 1990s and early 2000s (Lewis et al. 2009).
490 The consistency of these results on a second continent supports the idea that global drivers of change
491 can affect even the most remote forests. The fact that biomass is increasing across the entire wood
492 density spectrum of tree species implies that forests are responding to increasing atmospheric CO₂
493 concentrations (Lewis et al. 2009). The long-term increase in carbon stocks of African forests was
494 recently updated and confirmed, with three times as many plots showing continued sink strength (Hubau
495 et al. 2020).

496
497 (5) **The Pan-Tropical forest carbon sink.** Once the T-FORCES network allowed sufficient plot
498 coverage across remaining Bornean forest a similar increase in aboveground biomass over recent
499 decades was revealed (Qie et al. 2017). Thus the three continental networks discovered that old-growth
500 tropical forests as a whole have been a long-term sink. Our ground measurements imply this totalled
501 more than one billion tonnes of carbon each year over the 1990s and early 2000s, i.e. half the terrestrial
502 global carbon sink (Pan et al. 2011), which is sufficient to significantly slow climate change. The fact
503 that the main blocs of remaining tropical forests are *en masse* out-of-equilibrium and undergoing
504 biomass increases of similar magnitude implies a common global driver of growth. Increasing
505 atmospheric CO₂ is the most parsimonious candidate and is consistent with predictions from first
506 principles (e.g., Phillips and Gentry 1994, Huntingford et al. 2013), inference from CO₂ fertilization
507 experiments (Terrer et al. 2019), analyses of the global carbon budget (Ballantyne et al. 2012, Gaubert
508 et al. 2019), observed greening of forests unaffected by land-use change (Piao et al. 2019), and recent
509 plot analyses showing a significant role of CO₂ (Hubau et al. 2020).

510
511 (6) **The Amazon sink is slowing.** After 30 years of monitoring Amazonian forests, the RAINFOR plots
512 show that the rate of increase in forest growth is declining. Tree mortality rates have increased in some
513 regions, leading to a slow decline in the magnitude of the net biomass accumulation (Brienen et al.
514 2015, Phillips and Brienen 2017). The subsidy from nature provided by tropical forests may be time-
515 limited.

516

517 (7) **Recent droughts in Amazonia have had large impacts.** Long-term plots also monitored
518 immediately before and soon after droughts reveal that these forests can switch rapidly from being a
519 major sink to a source of carbon. Both the 2005 and 2010 Amazon droughts had a net impact on the
520 order of 1 Pg of carbon, driven primarily by drought-induced mortality (Phillips et al. 2009, Lewis et
521 al. 2011; Doughty et al. 2015, Feldpausch et al. 2016). RAINFOR and GEM have quantified the drought
522 sensitivity of the world's biggest rainforest and identified the key process affected: mostly tree mortality
523 rather than growth, and not photosynthesis. The impact on the biomass carbon sink of the 2010 drought
524 and non-drought years match independent inferences from measurements of atmospheric [CO₂] using
525 aircraft (Gatti et al. 2014).

526
527 (8) **The African and Amazon sinks have diverged.** Thirty years of monitoring AfriTRON plots show
528 that African forests have continued to function as a carbon sink, although the most intensively
529 monitored plots suggest that the sink may be declining (Hubau et al. 2020). When analysed together
530 with RAINFOR data, within-plot changes over time reveal a common set of drivers that suggest the
531 sinks will decline, with African forests lagging behind Amazonian forests by 15-20 years (Hubau et al.
532 2020). Changes across both continents are best explained by a combination of the positive effects of
533 increasing CO₂ enhancing productivity and negative effects of higher temperatures and droughts in
534 suppressing growth and accelerating mortality, combined with the intrinsic properties of forests
535 themselves. The time-lag of the African sink saturation is due to longer carbon residence times in
536 African forests, so that mortality catches-up slower than in faster turnover forests. Amazonian forests
537 are often harder hit because they are hotter and can be drought-prone (Hubau et al. 2020). Together, the
538 pan-tropical plot networks have revealed long-term trends in carbon storage and determined which
539 drivers matter, which processes are affected, where they are impacting, and what the lags are.

540
541 (9) **The future of the tropical forest carbon sink.** Monitoring the present and the recent past of forest
542 behaviour can also reveal likely future scenarios as the climate continues to change. Our plot networks
543 provide two powerful and independent lines of evidence. First, the *long-term sensitivity to climate*
544 emerges from a space-for-time analysis based on 813 plots across the Earth's tropical forests. This
545 shows how maximum temperature and dry season intensity combine to determine the equilibrium
546 climate controls on forest carbon, acting on productivity and mortality to limit forest carbon storage in
547 *the long-term* (Sullivan et al. 2020). Forests exhibit remarkable thermal resilience under low amounts
548 of warming, but in the hottest forests (>32.2°C max. temp.) biomass carbon drops off rapidly. Most of
549 the biome will exceed this value with one further degree of warming (approximately equivalent to a
550 2°C increase above pre-industrial levels). Second, analysing recent changes in productivity and
551 mortality as a function of recent climates, and coupling them with future climate scenarios, confirms
552 that the carbon sink is likely to decline (Hubau et al. 2020). A key uncertainty with these latter
553 projections is the extent to which local resilience due to shallow water-tables (Sousa et al. 2020) may
554 mitigate effects, and whether more compositional changes will extend the carbon sink further if species
555 better-adapted to the new conditions compensate for others' losses. The analysis by Sullivan et al.
556 (2020) confirms that lagged species-related resilience is likely as long as forests do not experience
557 substantial warming.

558
559 (10) **Tropical forest biodiversity is changing.** RAINFOR data show that an entire group of plants,
560 lianas (woody vines), are increasing in dominance across Amazonia (Phillips et al. 2002). Large lianas
561 in turn contribute to higher tree mortality (Phillips et al. 2005). Tree community composition is
562 changing too. In the Andes, plots of ABERG, RBA and RedSPP show 'thermophilization' –
563 communities becoming more warm-adapted (e.g Fadrique et al. 2018). Climate change is inducing
564 large-scale change in tropical lowland trees too, as wet-adapted taxa in Amazonia face greater mortality

565 risks from drought (Esquivel Muelbert et al. 2017, 2019) while a shift towards drought-deciduous tree
566 species is observed in west African plots experiencing a multi-decadal drought (Fauset et al. 2012,
567 Aguirre-Gutiérrez et al. 2019, 2020). In both continents these community responses to drought
568 coincided with biomass gains. Nonetheless, because of the long generation times of tropical trees the
569 compositional change has not kept pace with the drying of Amazonia (Esquivel-Muelbert et al. 2019).
570 This suggests that further community change is inevitable, even before accounting for losses driven by
571 deforestation and disturbance of remaining forests (Barlow et al. 2016). Current models lack the
572 capacity to account for variation in tropical woody plant biodiversity and demographic processes and
573 their lagged responses to global change drivers.

574

575 In sum, highly distributed, long-term monitoring of the world's richest forests has profoundly increased
576 our understanding of nature's sensitivity to climate change. It has shown that intact forests have been
577 surprisingly resilient, but that many are now reaching the limits of their tolerance to global heating and
578 drying. Looking forward, many of the key uncertainties that remain concern the responses of tropical
579 biodiversity itself. This includes the extent to which the great biocomplexity of tropical forests
580 themselves will provide an effective and timely insurance policy in the face of rapidly changing
581 climates. To understand this, we must continue to monitor.

582

583

584 **5. Challenges and the Future of Tropical Forest Monitoring**

585

586 Large-scale plot networks have not only made a series of crucial scientific discoveries and advances,
587 but even more profoundly the Social Research Network model pioneered by RAINFOR since 2000 has
588 influenced how the science itself is being done. Tropical ecology has undergone a remarkable shift from
589 a small cadre of researchers working in one or two sites to a more globalised and decentralised process
590 with greatly increased contributions from tropical scientists. This has been made possible by supporting
591 highly-distributed researchers and field sites, establishing mechanisms for shared data management,
592 fostering an equitable concept of data ownership, and embracing groups who are often marginalised in
593 research. Importantly, the network model is nurtured by researchers placing trust in the sharing of hard-
594 won data to answer big questions and recognising the value of developing trusting relationships over
595 time. Finally, the growth of interactive multi-site, multi-cultural science has benefited hugely from
596 standardized field and analytical methods that have been agreed upon, formalised and promoted. The
597 ForestPlots.net experience demonstrates that collaborative, multi-polar structures help ensure breadth
598 and resilience, while supporting and encouraging the leaders of the future.

599

600 The transformative power of this approach has now led to the establishment of multiple plot-centred
601 networks that are reshaping our understanding of tropical ecosystems. However, these networks face a
602 number of key challenges to sustain the achievements made and enact even deeper transformational
603 change, which we set out here.

604

605 ***1. How can networks support leadership in the Global South?*** Although no single project can reverse
606 the impact of centuries of global inequality, tackling the barriers to a more equitable world is the
607 responsibility of all. Ecology and conservation science remain biased towards temperate ecosystems in
608 terms of funding and topical focus (Di Marco et al. 2017, Reberedo et al. 2020), while tropical ecology
609 is often detached from policy-making processes and with most high-impact papers still led from the
610 North. Together with open data-sharing and long-term collaboration, more leadership of forest science
611 from tropical countries helps to address these disparities and achieve more impact on forest and carbon
612 management (e.g., Vargas et al. 2017, Baker et al. 2020). Supporting tropical students at different levels

613 up to PhD and mentoring beyond the doctoral degree is also important. To help, ForestPlots.net has
614 made shared tools widely available, and especially data management and analytic tools that support
615 data contributors as much as users. To ensure fieldwork is valued and leadership in tropical researchers
616 is fostered, we have developed a Code of Conduct to encourage contributions, support scientists in
617 tropical countries, and promote mentoring of junior scientists. To oversee this we created a diverse
618 steering committee that currently supports more than 30 projects each year
619 (<http://www.forestplots.net/en/join-forestplots/research-projects>). As a result, the proportion of
620 ForestPlots.net research projects and products being led by tropical nationals has greatly increased, with
621 less than 10% of publications as RAINFOR began (2000-2004), rising to 35% in 2009 and 50% by
622 2019. In spite of such gains diversifying leadership is a long-term process. Ultimately, sustained funding
623 in and by tropical countries themselves will ensure they not only have strong training programmes to
624 develop the core field and analytical skills scientists need, but equal opportunities for career
625 development.

626

627 **2. How should we value and recognise collaboration and leadership?** Most of the obvious reward
628 structures in science - job security, income, grant success, peer reputation and public acclaim – can
629 favour a ‘me first’ approach. Credit accrues to individuals, but true collaboration involves trust, sharing
630 and encouraging others. Collaboration is gratifying, but letting go of our egos can be challenging, and
631 in larger groups there is greater risk that individuals feel their contributions go unnoticed. Likewise, the
632 essential and major effort needed ‘backstage’ in ForestPlots.net to check data, update and develop data
633 management, and support requests to utilize data, goes unseen. A partial developmental solution to this
634 involves providing network contributors the opportunity to lead analyses with the expectation that *these*
635 *new leaders then support others* with their analyses. Another approach is to reflect the diversity of
636 contributions that underpin the success of networks by using a group author that shares credit amongst
637 all, as in the current paper. These steps can promote the recognition of multiple contributions and
638 development of tomorrow’s leaders.

639

640 **3. How do we properly value the long-term?** Project and thesis time-scales last from one to five years,
641 but the lifespans of trees are measured in decades and centuries. What can seem vitally important in a
642 hypothesis-driven research grant or a PhD may, in fact, have little relevance to the longer natural
643 rhythms of nature. What if the dominant processes governing climate responses of forests turn out to
644 involve lifetime accumulated ecophysiological stress, tree demography and species migration? Clearly
645 very long-term research is essential to decode these processes. Meanwhile, maintaining permanent plots
646 is as much an expression of hope in the future as a stake in an immediate scientific outcome, as rewards
647 may accrue to others distant in time and space. Indeed, we have all benefited from researchers installing
648 plots from the 1930s onwards. These pioneers never dreamt that their careful tree measurements and
649 botanical identifications would help reveal the impacts of climate change on tropical forests, but look
650 what they have achieved! *Long-term research programmes are simply irreplaceable, enabling us to*
651 *discover, quantify, identify the causes of, and ultimately tackle environmental change.*

652

653 **4. Can we ensure fieldwork and human skills are valued for what they are?** Technology provides
654 many benefits to the scientific endeavor, but there are risks too, particularly in a field where long-term
655 measurements may be perceived as unfashionable (Ríos-Saldaña et al. 2018). A serious risk is that the
656 tail wags the dog: when technological advance is an end in itself, it is unlikely that scientific and human
657 progress will follow. We should never forget the basic truth that human beings and their skills are
658 essential to measure and identify tropical trees. It is notable that those measuring, climbing and
659 collecting tropical trees in permanent plots are among the least well-paid of all actors in the global
660 scientific endeavour. Yet these true *key workers* are irreplaceable as tree measurement in many locations

661 is completely dependent on such labour and skill (Fig. 7) and, more broadly, *combinations* of people
662 and technology provide the best results (next section). Moreover, because tropical tree floras usually
663 run into the thousands of species (e.g., >4,700 tree species in Peru, Vásquez et al. 2018), identification
664 depends on the work of highly skilled climbers and botanists to collect material from canopies, make
665 vouchers, and identify and permanently store them in herbaria. Without physical collections and the
666 immense multi-cultural knowledge and skills that produce them, identifications are untestable
667 hypotheses whose quality cannot be evaluated. But with vouchers, we have the names that are essential
668 to test questions about diversity, composition, functional traits, and wood density and biomass.

669

670 **5. How should we fund proven networks long-term?** As the most pressing concern, this question
671 intersects closely with all of the above. *Few organisations have the vision to support long-term*
672 *endeavours where leadership and credit is shared diffusely, many benefits accrue after decades, and*
673 *where the most exciting discoveries may be unforeseeable.* We recommend the following, potentially
674 transformational changes to address the challenges and unlock the benefits of ambitious, long-term
675 forest monitoring:

676

677 (i) *Science Agencies have the foresight to build long-term research capacity*, and consciously adopt the
678 challenge of international ecosystem monitoring and tropical career development;

679

680 (ii) *Space Agencies recognise that tropical fieldwork can measure the things they cannot and validate*
681 *the attributes that they can*, and contribute to the labour and unique skills of tropical field scientists and
682 help overcome the challenges they face;

683

684 (iii) *Development and Conservation Agencies who depend on a robust understanding of the long-term*
685 *health of forests*, recognise that high quality, long-term, on-the-ground monitoring of trees, and
686 supporting these skills, is vital for their agenda;

687

688 (iv) *National and international climate adaptation and mitigation funders recognise that long-term,*
689 *world-class forest monitoring is essential to assess both the mature forest carbon fluxes and the land-*
690 *based emissions* which will together impact forest management, nature-based solutions, and nationally
691 determined contributions (NDCs) to reducing greenhouse gases for decades to come.

692

693 Every one of these user groups requires successful networks with long-term, research-grade tropical
694 forest plots to discern the status and change of biodiversity and to assess the stocks and flows of carbon.

695

696

697

698
699

700 **Figure 7. Accurately measuring and identifying trees in remote tropical forests requires**
701 **dedication, skill and courage.**

702

703 To measure the diameter of this giant *Ceiba* (Malvaceae) tree in Colombia's Chocó, three people each
704 needed to climb more than 10 meters. Such techniques can be the most practical and accurate options
705 for measuring large trees. Here, like many of our sites, there is no electric power, let alone a field station,
706 and chronic insecurity due to political and social conflicts and narco-trafficking means that aircraft and
707 laser-scanners are not deployable. Images: Pauline Kindler.

708

709

710

711 **6. Achievements, Impact and Potential**

712

713 Despite the challenges, tropical forest science has come a very long way. Until recently, tropical ecology
714 suffered from a massive data deficit. We had plenty of theory and conjecture, but few comparable
715 observations over time and space to *deductively* put these ideas to the test or *inductively* generate new
716 ones. Networks such as ForestGEO, RAINFOR, AfriTRON, and the wider ForestPlots community have
717 contributed much to resolving this. *By leveraging a remarkably old technology, forest plot networks*
718 *have sparked a modern revolution in tropical forest science.* They provide the means by which we have
719 quantified the trajectory of tropical forest carbon balance, including its climate sensitivity, and now
720 provide a Pan-Tropical Observatory for tracking these vital indicators of Earth's health going forward.

721

722 Permanent plots are now the prism through which ecologists address a rich suite of ecological questions,
723 but they have also changed the way *others* see forests. For example, well-identified permanent plots
724 have proved fertile ground for botanists to discover new tree species and genera (e.g. Reitsma et al.

725 1988, Baker et al. 2017, Wurdack and Farfan Rios 2017, Vásquez et al. 2018, Gosline et al. 2019,
726 Vásquez & Soto, 2020), ethnoecologists to quantify forest people's values (Phillips and Gentry 1993,
727 Lawrence et al. 2005), atmospheric scientists to explore organic volatiles production (Harley et al.
728 2004), ecophysiologicalists to assess why trees die (Rowland et al. 2015, Mcdowell et al. 2018) and how
729 necromass accumulates and decays (Chao et al. 2009), modelers to verify ecosystem simulations
730 (Johnson et al. 2016), and foresters to predict and manage wood production and its impacts (Berry et
731 al. 2008, Gourlet-Fleury et al. 2013). They provide critical infrastructure for whole-biodiversity and
732 cross-taxa inventory, including exploration of cryptic canopy and soil faunal and microbial biodiversity
733 (e.g., Nakamura et al. 2017). The impacts of these networks on policy are also growing. In Peru for
734 example, ForestPlots.net, MonANPe and RAINFOR contribute to estimating National Forest Reference
735 Emission Levels (NREF) since 2016, and our permanent plots are now being used to validate national
736 contributions to the Paris Climate Accord via forest carbon sequestration (Vicuña et al 2018, Baker et
737 al. 2020). In Ghana, plots were needed to quantify historical and current carbon stocks, helping to
738 establish baseline forest reference levels for the flagship Cocoa Forest REDD+ Programme (FCPF,
739 2017). In Gabon stratified-random sampling of high-quality AfriTRON plots is now used for the
740 National Forest Inventory (Poulsen et al. in press. Ecol. Apps). Internationally, RAINFOR, AfriTRON,
741 T-FORCES and 2ndFor provide the new IPCC default values on old-growth and secondary forest
742 carbon sequestration to assist countries develop their nationally determined contributions as part of the
743 UNFCCC process (Requena Suarez et al. 2019).

744

745 What of the future? As new technologies for probing forests become available, the hundreds of
746 standardised long-term plots and networks of skilled tropical researchers represent critical infrastructure
747 to enhance and calibrate new insights as they arise. The benefits of working within established plots go
748 beyond simply having confidence in species identifications and hence biomass. By leveraging their
749 labour and insights, we can increase the scientific value of new technology. For example, the ability to
750 match individual trees from laser-scanning surveys to tagged, censused individuals provides critical
751 information on growth and identity (Disney et al. 2018). Integrating long-term botanical and ecological
752 records of plots with terrestrial and airborne laser-scanning in designated *super-sites* (Chave et al. 2019)
753 can help overcome limitations of different approaches, providing greater certainty to biomass estimates
754 (e.g., Schepaschenko et al. 2019). Hence forest networks can help unlock the value of space-based
755 efforts to monitor forests. Just as the constellation of Earth-observing environmental satellites is a public
756 good, the plot constellation provides highly complementary, critical global infrastructure. And last, but
757 not least, as intact tropical ecosystems continue to shrink, burn and fray at the edges, permanent plots
758 provide the indispensable baseline for understanding biodiversity and ecosystem processes too. They
759 should be our shining North Star for guiding sorely needed restoration efforts throughout this century.

760

761 So far this effort has relied on the goodwill of hundreds of colleagues and dozens of grants from many
762 sources (see Acknowledgments). Only long-term funding will ensure that the vital public benefits of
763 plot networks continue to flow. Such support is surprisingly difficult to obtain (see Box 1). Yet twenty
764 years of hard-won scientific results show that reliable and highly distributed monitoring is irreplaceable.
765 They underscore the importance of welcoming all contributors to this effort, and of valuing the diverse
766 skills needed to understand tropical biodiversity and its dynamics. Ultimately, we will understand the
767 nature of tropical forests best when the science is global, local skills are fairly valued, and when the
768 development of tropical scientists is at its heart. Indeed, we know of no other model capable of achieving
769 this.

770

771 *[Main Body of Text Ends]*

772 [Insert Box]
773

774 **Box 1. What Does It Take?**

775

776 Clearly long-term ground-based monitoring of tropical forests requires a sustained global team effort.
777 But just how much does it take to deliver tropical forest plot data in practice? It requires both skilled
778 people and their labour, and funds. So here we address this question in terms of *the human effort made*
779 *thus far* and the *financial investment needed to monitor across continents*.

780

781 **(a) The Human Contribution:** Network efforts include not only in-country field campaigns but much
782 besides. To deliver from conception to product, high-quality data collected over many years and in
783 dozens of countries requires multiple teams that are well-led and consistently trained in the proper
784 protocols, quality control, and data management. In RAINFOR and AfriTRON this includes national
785 or local field-team members to establish and remeasure plots, others to collect and identify plants and
786 collect and analyse soils, colleagues to organize and manage the data, and others to sustain and lead the
787 process nationally and globally – not to mention those who support these processes with essential
788 administration, herbarium assistance, database development, analytical packages, information
789 technology support, technical training and so on. Naturally some individuals contribute in several ways
790 and roles change over time as lives change. All these local, national and global efforts ultimately depend
791 on funding.

792

793 The average effort *in the field, herbarium, and lab* to install a typically remote and diverse 1-ha tropical
794 forest plot and analyse its species and soil sums to 98 person-days, with an additional effort of 38
795 person-days *to support and sustain these teams and data management*. Together a total of *136 person-*
796 *days is needed on average to deliver high-quality data from a new plot*.

797

798 Recensusing a plot is usually less demanding (for example soil collection is not repeated and there are
799 fewer plants to identify) but still considerable: 45 person-days in the field and herbarium, and 31 person-
800 days to support and sustain. Therefore, *76 person-days are required to deliver high quality data from a*
801 *recensused plot*. These represent long-term averages. These estimates are based on remeasuring plots
802 within five years or less between each census, and assume the plot was installed using standard
803 protocols. Naturally circumstances can vary from site-to-site and country-to-country.

804

805 Thus far our teams have established 4,062 plots in tropical forests of which 1,816 are recensused, from
806 as little as once up to as many as 40 times each. Of the 4,062 plots the modal size is between 0.9 and
807 1.1 ha but there are smaller plots too (1,844 are ≥ 0.9 ha, and 2,216 are < 0.9 ha). The recensused plots
808 tend to be larger: of the 1,816 recensused plots, 62% are ≥ 0.9 ha (1,131) and 38% are < 0.9 ha (675).

809

810 If we conservatively assume that plots ≥ 0.9 ha (average size = 1.2 ha) require 136 days to install and
811 76 days to recensuse, and those < 0.9 ha require half this effort (also likely to be conservative due to fixed
812 costs for even the smallest plots), then the total effort to install these plots has been 196,248 person-
813 days, and recensusing them has taken 357,940 person-days. In total this comes to 1,518 years.

814

815 As if one remarkably talented and tireless individual had been working continuously since AD 502.

816

817

818 **(b) Cost of Sustained Continental Monitoring:** *How much does it cost to monitor Earth's remaining*
 819 *old-growth tropical forests with ground networks?* This is a critical question given the exceptional
 820 ecological value of these systems, the threats they are under, and the role they have and can play in
 821 modifying the rate of global climate change.

822
 823 At first sight this question appears difficult to answer, or to even agree upon the terms of reference.
 824 Scientists would ask and likely argue: Monitoring what? For whom? With what precision, level of
 825 confidence, or spatial and temporal resolution? Recognising such difficulties we take a pragmatic
 826 approach and reframe the question. Instead we posit, *How much will it cost to monitor tropical forests*
 827 *using all the permanent plots that we have already remeasured?*

828
 829 This question is tractable *practically* (these plots represent a known quantity: we know exactly *where*
 830 *they are, what* most of the species are, and to a large extent *who* can actually do the work – *each of*
 831 *which is critical*), it makes sense *scientifically* (the plots already have a baseline monitoring period
 832 against which we can assess any change, *which is essential*), and it is justifiable *quantitatively* (using
 833 somewhat smaller datasets than this we have already detected long-term changes in carbon balance,
 834 productivity and tree mortality on each continent, reported short-term changes in response to El Niño
 835 droughts and other climate anomalies, and attributed changes in carbon and biodiversity to climate
 836 drivers, *all of which establish proof-of-concept*). So here goes:

837
 838 * There are 1,105 remeasured ForestPlots.net plots in tropical forest South America (422<0.9ha +
 839 683>0.9ha), 462 in tropical forest Africa (109 + 353), 192 in tropical forest Asia (106 + 86) and 32 in
 840 tropical forest Australasia (22 + 10). With all 1,791 plots monitored on a four-year cycle this requires
 841 revisiting 448 plots annually, of which 165 are ≤ 0.9 ha and 283 are ≥ 0.9 ha.

842
 843 * Recensus costs can vary from site-to-site. Botanical identification is especially challenging in most of
 844 South America due to the extraordinary diversity, while some African forests are exceptionally remote.
 845 Employment, social security and health costs vary but are rising almost everywhere. On average,
 846 considering all *the direct and indirect human effort required* (above) and *additional direct costs*
 847 (including consumables, equipment, travel, subsistence, insurance, visas, permits, shipping, training,
 848 IT), the current cost to deliver a high-quality tropical recensus is $\approx 18,000$ USD for plots ≥ 0.9 ha, and
 849 at least half this for plots that are < 0.9 ha. That's about 30 USD per tree.

850
 851 [Similarly, to install plots is a significant operation but it requires more expert time to collect and
 852 identify hundreds of trees. The total cost to properly install a high-quality tropical forest plot is $\approx 27,000$
 853 USD for a 1 ha plot. When forests are recensused this start-up investment is leveraged as a contribution:
 854 this enables the subsequent monitoring of forest dynamics but it's not new spend.]

855
 856 Thus, the annual delivery cost for a pantropical, practical ground-based *recensus programme* capable
 857 of tracking and attributing forest change to published standards is estimated as:

858
 859 $(283 * 18,000 + 165 * 9,000) \approx 6.6$ million US dollars.

860
 861 This *annual investment is sufficient to ensure that ground-measurements track the biome-wide and*
 862 *continent-specific biomass carbon balance of the remaining intact tropical moist forests, as well as*
 863 *their climate sensitivity*. It also provides ground calibration and validation for remote estimates of
 864 biomass. It further enables us to detect whether the tropical sink is now disappearing as predicted, and
 865 where and why, and what the consequences for biodiversity are, and to determine how much intact

866 ecosystems can contribute to countries' nationally determined contributions (NDCs) to climate
867 mitigation.

868

869 While \$6.6 million is a significant sum it is instructive to compare it to funding required for other large-
870 scale science initiatives. The United States alone spends \$80 million annually (i.e., *twelve times as*
871 *much*) on its national forest inventory (Castillo and Alvarez, 2020). Space Agencies invest from ca. \$80
872 million to 500 million Euros for a single mission to estimate biomass from space for a few years (i.e,
873 *one to two orders of magnitude more*). And as we have seen, ground networks ultimately not only
874 transcend the short-term time windows of such missions but add huge value to them.

875

876 In conclusion, the ongoing cost of monitoring Earth's remaining tropical forests on the ground is
877 extraordinarily small compared to the great scientific and practical benefits it provides. Meanwhile,
878 tropical forests themselves are in greater trouble than ever before, even while still providing tremendous
879 and irreplaceable benefits to the people of the world. Now that the capacity to monitor tropical forests
880 is established and proven it is surely incumbent on all of us to ensure this collective effort continues
881 and grows.

882

883

884

885 Acknowledgments

886

887 This paper is a product of the RAINFOR, AfriTRON and T-FORCES networks and the many other
888 partner networks in ForestPlots.net which support long-term forest science and monitoring across
889 tropical countries. These initiatives have been supported by numerous people and grants since their
890 inception. We are particularly indebted to more than one thousand four hundred field assistants for their
891 essential help in establishing and maintaining the plots, as well hundreds of rural communities and
892 institutions. For additional assistance we thank Michel Baisie, Wemo Betian, Vincent Bezard, Mireille
893 Breuer-Ndoundou Hockemba, Ezequiel Chavez, Douglas Daly, Armandu Daniels, Eduardo Hase,
894 Muhammad Idhamsyah, Phillipe Jeanmart, Cisquet Keibou Opepa, Jeanette Kemp, Antonio Lima, Jon
895 Lloyd, Mpanya Lukasu, Sam Moore, Klaus Scipal and Rodrigo Sierra. We thank Mark Burkitt for help
896 developing the ForestPlots.net database. We acknowledge the long-term help provided by national and
897 local government offices in all countries where colleagues work in facilitating the permission and
898 documentation for fieldwork, as well as help provided by protected area and other authorities.

899

900 The networks have been supported by multiple grants, most notably the European Research Council
901 (ERC Advanced Grant 291585 – ‘T-FORCES’), the Gordon and Betty Moore Foundation (#1656
902 ‘RAINFOR’, and MonANPe), the David and Lucile Packard Foundation, the European Union’s Fifth,
903 Sixth, and Seventh Framework Programme (EVK2-CT-1999-00023 – ‘CARBONSINK-LBA’, 283080
904 – ‘GEOCARBON’, 282664 – ‘AMAZALERT’), the Natural Environment Research Council
905 (NE/D005590/1 – ‘TROBIT’, NE/F005806/1 – ‘AMAZONICA’, ‘PPFOR’ E/M0022021/1, several
906 NERC Urgency and New Investigators Grants, the NERC/ State of São Paulo Research Foundation
907 (FAPESP) consortium grants ‘BIO-RED’ (NE/N012542/1, 2012/51872-5), ‘ECOFOR’
908 (NE/K016431/1, 2012/51509-8), ‘ARBOLES’ (NE/S011811/1), the Royal Society (University
909 Research Fellowships and Global Challenges Awards (‘FORAMA’, ICA/R1/180100), the National
910 Geographic Society, the Centre for International Forestry (CIFOR), Gabon’s National Parks Agency
911 (ANPN), US National Science Foundation (DEB 1754647), and Colombia’s Colciencias. We thank the
912 National Council for Science and Technology Development of Brazil (CNPq) for support to the
913 Cerrado/Amazonia Transition Long-Term Ecology Project (PELD/441244/2016-5), the PPBio
914 Phytogeography of Amazonia/Cerrado Transition project (CNPq/PPBio/457602/2012-0), the Goiás
915 Research Foundation (FAPEG/PELD: 2017/10267000329), and several PVE and Productivity Grants.
916 Funding for plots in the Udzungwa Mountains (Tanzania) was obtained from the Leverhulme Trust
917 under the Valuing the Arc project. Plots in the Democratic Republic of Congo were funded by the
918 Belgian Science Policy Office (SD/AR/01A/COBIMFO, BR/132/A1/AFRIFORD,
919 BR/143/A3/HERBAXYLAREDD, CongoFORCE), the Flemish Interuniversity Council VLIR-UOS
920 (CD2018TEA459A103, FORMONCO II); and the European Union (REAFOR, FORETS projects). We
921 acknowledge grant CEBA (ref. ANR-10-LABX-25-01) and the support of the Forestry Development
922 Authority of Liberia. We also acknowledge the support of the European Space Agency. Data from
923 RAINFOR, AfriTRON and T-FORCES are stored and curated at ForestPlots.net, a cyber-infrastructure
924 initiative developed at the University of Leeds that unites permanent plot records and supports scientists
925 from the world’s tropical forests. The development of ForestPlots.net and curation of data has been
926 funded by several grants including NE/B503384/1, NE/N012542/1 BIO-RED, ERC Advanced Grant
927 291585 ‘T-FORCES’, NE/F005806/1 ‘AMAZONICA’, NERC New Investigators Awards,
928 NE/N004655/1, ‘TREMOR’, the Gordon and Betty Moore Foundation (‘RAINFOR’, ‘MonANPe’),
929 ERC Starter Grant 758873 ‘TreeMort’, EU Framework 6, a Royal Society University Research
930 Fellowship, and a Leverhulme Trust Research Fellowship.

931

932 The manuscript has been developed with the encouragement of Richard Primack and Reinmar Seidler
933 and has benefited from the constructive comments of three reviewers; we thank them all. Finally we
934 thank several late, great colleagues for their unique and lasting contributions that have made possible
935 all that the networks and ForestPlots.net have achieved together since the beginning: Samuel Almeida,
936 Elisban Armas, José Armas, Sandra Brown, Kwaku Duah, Gloria Galeano, Alwyn Gentry, Max
937 Gunther, Moïse Mikame, Norman Myers, Sandra Patiño, John Proctor, David Smith and Jean-Pierre
938 Veillon.
939
940

941 **Author Contributions**

942

943 All authors have contributed to ForestPlots.net-associated networks by leading, or collecting or
 944 supporting field data acquisition, or implementing and funding network development, data
 945 management, analyses and outputs. O.L.P. wrote the manuscript with contributions from most co-
 946 authors, M.J.S. contributed new analyses and M.J.S., G.L.P. and A.L.L. helped prepare the figures.
 947 O.L.P., T.R.B., G.L.-G. and S.L.L. conceived ForestPlots.net. R.B., T.F., D.G., E.G., E.H., W.H., A.E.-
 948 M., A.L., K.M., Y.M., G.C.P., B.S-M., L.Q., and M.J.P.S have additionally contributed tools, funding
 949 or management to its development since.

950

951

952 **Literature Cited**

953

954 Aguirre-Gutiérrez, J., Oliveras, I., Rifai, S., Fauset, S., Adu-Bredu, S., Affum-Baffoe, K., Baker, T.R.,
 955 Feldpausch, T.R., et al. 2019. Drier tropical forests are susceptible to functional changes in response to
 956 a long-term drought. *Ecology Letters*, 22, 855-865.

957

958 Aguirre-Gutiérrez, J., Malhi, Y., Lewis, S.L., Fauset, S., Adu-Bredu, S., Affum-Baffoe, K., Baker, T.R.,
 959 Gvozdevaite, A., et al., 2020. Long-term droughts may drive drier tropical forests towards increased
 960 functional, taxonomic and phylogenetic homogeneity. *Nature Communications*, 3346 (2020).

961

962 Alvarez-Davila, E., Cayuela, L., González-Caro, S., Aldana, A.M., Stevenson, P.R., Phillips, O.,
 963 Cogollo, Á., Penuela, M.C., von Hildebrand, P., Jiménez, E. and Melo, O., 2017. Forest biomass density
 964 across large climate gradients in northern South America is related to water availability but not with
 965 temperature. *PloS One*, 12(3).

966

967 Anderson, L.O., Malhi, Y., Ladle, R.J., Aragao, L.E.O., Shimabukuro, Y., Phillips, O.L., Baker, T.,
 968 Costa, A.C.L., Espejo, J.S., Higuchi, N. and Laurance, W.F., 2009. Influence of landscape heterogeneity
 969 on spatial patterns of wood productivity, wood specific density and above ground biomass in Amazonia.
 970 *Biogeosciences*, 6, 1883-1902.

971

972 Anderson, L. O., Malhi, Y., Aragão, L. E., Ladle, R., Arai, E., Barbier, N., & Phillips, O. 2010. Remote
 973 sensing detection of droughts in Amazonian forest canopies. *New Phytologist*, 187, 733-750.

974

975 Anderson-Teixeira, K.J., Davies, S.J., Bennett, A.C., Gonzalez-Akre, E.B., Muller-Landau, H.C.,
 976 Joseph Wright, S., et al. 2015. CTFs-Forest GEO: a worldwide network monitoring forests in an era of
 977 global change. *Global Change Biology* 21, 528-549.

978

979 Aragao, L.E., Poulter, B., Barlow, J.B., Anderson, L.O., Malhi, Y., Saatchi, S., Phillips, O.L. and Gloor,
 980 E., 2014. Environmental change and the carbon balance of Amazonian forests. *Biological Reviews*, 89,
 981 913-931.

982

983 Avitabile, V., Herold, M., Heuvelink, G.B., Lewis, S.L., Phillips, O.L., Asner, G.P., Armston, J.,
 984 Ashton, P.S., Banin, L., Bayol, N et al., 2016. An integrated pan-tropical biomass map using multiple
 985 reference datasets. *Global Change Biology*, 22, 1406-20.

986

987 Baker, T.R., Phillips, O.L., Malhi, Y., Almeida, S., Arroyo, L., Di Fiore, A., Erwin, T., Killeen, T.J.,
 988 Laurance, S.G., Laurance, W.F. et al., 2004. Variation in wood density determines spatial patterns in
 989 Amazonian forest biomass. *Global Change Biology*, 10, 545-62.

990

991 Baker, T.R., Phillips, O.L., Malhi, Y., Almeida, S., Arroyo, L., Di Fiore, A., Erwin, T., Higuchi, N.,
 992 Killeen, T.J., Laurance, S.G. and Laurance, W.F., 2004. Increasing biomass in Amazonian forest plots.

- 993 *Philosophical Transactions of the Royal Society of London. Series B: Biological Sciences*, 359, 353-
994 365.
995
- 996 Baker, T.R., Phillips, O.L., Laurance, W.F., Pitman, N.C., Almeida, S., Arroyo, L., DiFiore, A., Erwin,
997 T. et al., 2009. Do species traits determine patterns of wood production in Amazonian forests?
998 *Biogeosciences* 6, 297-307.
999
- 1000 Baker, T.R., Pennington, R.T., Magallon, S., Gloor, E., Laurance, W.F., Alexiades, M., Alvarez, E.,
1001 Araujo, A., Arets, E.J., Aymard, G. and De Oliveira, A.A., 2014. Fast demographic traits promote high
1002 diversification rates of Amazonian trees. *Ecology Letters*, 17, 527-536.
1003
- 1004 Baker, T.R., Vicuña Minano, E., Banda, K., del Castillo, D., Farfan-Rios, W, Lawson, I.T., Loja
1005 Alemán, E., Pallqui Camacho, N., Silman, M.R., Roucoux, K.H., Phillips, O.L., Honorio Coronado,
1006 E.N., Monteagudo Mendoza, Rojas Gonzáles, R., 2020. From plots to policy: how to ensure long-term
1007 forest plot data supports environmental management in intact tropical forest landscapes. *Plants, People
1008 and the Planet* (in press).
1009
- 1010 Ballantyne, A.P., Alden, C.B., Miller, J.B., Tans, P.P. and White, J.W.C., 2012. Increase in observed
1011 net carbon dioxide uptake by land and oceans during the past 50 years. *Nature*, 488, 70-72.
1012
- 1013 Banin, L., Feldpausch, T.R., Phillips, O.L., Baker, T.R., Lloyd, J., Affum-Baffoe, K., Arets, E.J., Berry
1014 et al., 2012. What controls tropical forest architecture? Testing environmental, structural and floristic
1015 drivers. *Global Ecology and Biogeography*, 21, 1179-1190.
1016
- 1017 Banin, L., Lewis, S.L., Lopez-Gonzalez, G., Baker, T.R., Quesada, C.A., Chao, K.J., Burslem, D.F.,
1018 Nilus, R., Abu Salim, K., Keeling, H.C. and Tan, S., 2014. Tropical forest wood production: a cross-
1019 continental comparison. *Journal of Ecology*, 102, 1025-1037.
1020
- 1021 Barlow, J., Lennox, G.D., Ferreira, J., Berenguer, E., Lees, A.C., Mac Nally, R., Thomson, J.R., de
1022 Barros Ferraz, S.F., Louzada, J., Oliveira, V.H.F. and Parry, L., 2016. Anthropogenic disturbance in
1023 tropical forests can double biodiversity loss from deforestation. *Nature*, 535, 144-147.
1024
- 1025 Berry, N.J., Phillips, O.L., Ong, R.C. and Hamer, K.C., 2008. Impacts of selective logging on tree
1026 diversity across a rainforest landscape: the importance of spatial scale. *Landscape Ecology*, 23, 915-
1027 929.
1028
- 1029 Brienen, R.J., Phillips, O.L., Feldpausch, T.R., Gloor, E., Baker, T.R., Lloyd, J., Lopez-Gonzalez, G.,
1030 Monteagudo-Mendoza, A., Malhi, Y., Lewis, S.L. and Martinez, R.V., 2015. Long-term decline of the
1031 Amazon carbon sink. *Nature*, 519, 344-348.
1032
- 1033 Brearley, F.Q., Adinugroho, W.C., Cámara-Leret, R., Krisnawati, H., Ledo, A., Qie, L., Smith, T.E.,
1034 Aini, F., Garnier, F., Lestari, N.S. and Mansur, M., 2019. Opportunities and challenges for an
1035 Indonesian forest monitoring network. *Annals of Forest Science*, 76, 54.
1036
- 1037 Bruelheide, H., Dengler, J., Jiménez-Alfaro, B., Purschke, O., Hennekens, S.M., Chytrý, M., Pillar,
1038 V.D., Jansen, F., Kattge, J., Sandel, B. and Aubin, I., 2019. sPlot—A new tool for global vegetation
1039 analyses. *Journal of Vegetation Science*, 30, 161-186.
1040
- 1041 Castillo, P.S.B. and M. Alvarez, 2020. *Forest Inventory and Analysis Fiscal Year 2018 Business Report*.
1042 United States Department of Agriculture, 78 pp.
1043
- 1044 Chao, K.J., Phillips, O.L., Baker, T.R., Peacock, J., Lopez-Gonzalez, G., Vásquez Martínez, R.,
1045 Monteagudo, A. and Torres-Lezama, A., 2009. After trees die: quantities and determinants of
1046 necromass across Amazonia. *Biogeosciences*, 6, 1615-1626.
1047

- 1048 Chave, J., Davies, S.J., Phillips, O.L., Lewis, S.L., Sist, P., Schepaschenko, D., Armiston, J., Baker,
1049 T.R., Coomes, D. et al., 2019. Ground data are essential for biomass remote sensing missions. *Surveys*
1050 *in Geophysics* 40, 863-880.
- 1051
1052 Chazdon, R.L., Broadbent, E.N., Rozendaal, D.M., Bongers, F., Zambrano, A.M.A., Aide, T.M.,
1053 Balvanera, P., Becknell, J.M., Boukili, V., Brancalion, P.H. et al., 2016. Carbon sequestration potential
1054 of second-growth forest regeneration in the Latin American tropics. *Science Advances*, 2(5),
1055 p.e1501639.
- 1056
1057 Clinebell, R., Phillips, O.L., Gentry, A.H., Stark, N., and Zuuring. H., 1995. Prediction of neotropical
1058 woody plant diversity from soil and climatic data. *Biodiversity and Conservation* 4, 56-90.
- 1059
1060 Coelho de Souza, F., Dexter, K.G., Phillips, O.L., Pennington, R.T., Neves, D., Sullivan, M.J., Alvarez-
1061 Davila, E., Alves, Á., Amaral, I., Andrade, A. and Aragao, L.E., 2019. Evolutionary diversity is
1062 associated with wood productivity in Amazonian forests. *Nature Ecology & Evolution*, 3, 1754-1761.
- 1063
1064 Condit, R.S., 1997, Forest turnover, diversity, and CO₂. *Trends in Ecology & Evolution* 12, 249-250.
- 1065
1066 Corlett, R. T. and R.B. Primack., 2011. Tropical Rain Forests: An Ecological and Biogeographical
1067 Comparison, 2nd Edition. Wiley-Blackwell.
- 1068
1069 Davis, T.A.W. and Richards, P.W., 1933. The vegetation of Moraballi Creek, British Guiana: an
1070 ecological study of a limited area of tropical rain forest. Part I. *Journal of Ecology*, 21, 350-384
- 1071
1072 Dawkins, H.C. and Philip, M.S., 1998. Tropical moist forest silviculture and management: a history of
1073 success and failure. CAB international.
- 1074
1075 Di Marco, M., Chapman, S., Althor, G., Kearney, S., Besancon, C., Butt, N., Maina, J.M., Possingham,
1076 H.P., von Bieberstein, K.R., Venter, O. and Watson, J.E., 2017. Changing trends and persisting biases
1077 in three decades of conservation science. *Global Ecology and Conservation*, 10, 32-42.
- 1078
1079 Disney, M.I., Boni Vicari, M., Burt, A., Calders, K., Lewis, S.L., Raunonen, P. and Wilkes, P., 2018.
1080 Weighing trees with lasers: advances, challenges and opportunities. *Interface Focus*, 8(2), p.20170048.
- 1081
1082 Doughty, C.E., Metcalfe, D.B., Girardin, C.A.J., Amézquita, F.F., Cabrera, D.G., Huasco, W.H., Silva-
1083 Espejo, J.E., Araujo-Murakami, A., Da Costa, M.C., Rocha, W., Feldpausch, T.R. et al., 2015. Drought
1084 impact on forest carbon dynamics and fluxes in Amazonia. *Nature*, 519, 78-82.
- 1085
1086 Drew, A.P., Boley, J.D., Zhao, Y., Wadsworth, F.H., 2009. Sixty-two years of change in subtropical
1087 wet forest structure and composition at El Verde, Puerto Rico. *Interciencia*, 34, 34-40.
- 1088
1089 DRYFLOR, 2016. Plant diversity patterns and their conservation implications in neotropical dry forests.
1090 *Science*, 353, 1383-1387.
- 1091
1092 Duncanson, L., Armiston, J., Disney, M., Avitabile, V., Barbier, N., Calders, K., Carter, S., Chave, J.,
1093 Herold, M., Crowther, T.W., Falkowski, M. et al., 2019. The importance of consistent global forest
1094 aboveground biomass product validation. *Surveys in Geophysics*, 40, 979-999.
- 1095
1096 Elias, F., Ferreira, J., Lennox, G.D., Berenguer, E., Ferreira, S., Schwartz, G., Melo, L.D.O., Reis
1097 Junior, D.N., Nascimento, R.O., Ferreira, F.N. and Espirito-Santo, F., 2020. Assessing the growth and
1098 climate sensitivity of secondary forests in highly deforested Amazonian landscapes. *Ecology*, 101(3),
1099 p.e02954.
- 1100

- 1101 Espírito-Santo F.D., Gloor M., Keller M., Malhi Y., Saatchi S., Nelson B., Junior R.C., Pereira C.,
1102 Lloyd J. et al. 2014. Size and frequency of natural forest disturbances and the Amazon forest carbon
1103 balance. *Nature Communications*, 5:3434.
1104
- 1105 Esquivel-Muelbert, A., Baker, T.R., Dexter, K.G., Lewis, S.L., ter Steege, H., Lopez-Gonzalez, G.,
1106 Monteagudo Mendoza, A., Brien, R., Feldpausch, T.R., Pitman, N., Alonso, A. et al. 2017. Seasonal
1107 drought limits tree species across the Neotropics. *Ecography*, 40, 618-629.
1108
- 1109 Esquivel-Muelbert, A., Baker, T.R., Dexter, K.G., Lewis, S.L., Brien, R.J., Feldpausch, T.R., Lloyd,
1110 J., Monteagudo-Mendoza, A., Arroyo, L., Álvarez-Dávila, E., Higuchi, N. et al. 2019. Compositional
1111 response of Amazon forests to climate change. *Global Change Biology*, 25, 39-56.
1112
- 1113 Fadrique, B., Báez, S., Duque, Á., Malizia, A., Blundo, C., Carilla, J., Osinaga-Acosta, O., Malizia, L.,
1114 Silman, M., Farfán-Ríos, W. et al., 2018. Widespread but heterogeneous responses of Andean forests
1115 to climate change. *Nature* 564, 207-212.
1116
- 1117 Fauset, S., Johnson, M.O., Gloor, M., Baker, T.R., Monteagudo, A., Brien, R.J., Feldpausch, T.R. et
1118 al., 2015. Hyperdominance in Amazonian forest carbon cycling. *Nature Communications* 6:6857.
1119
- 1120 Feldpausch, T.R., Banin, L., Phillips, O.L., Baker, T.R., Lewis, S.L., Quesada, C.A., Affum-Baffoe, K.,
1121 Arets, E.J., Berry, N.J., Bird, M. et al. 2011. Height-diameter allometry of tropical forest trees.
1122 *Biogeosciences*, 8, 1081-1106.
1123
- 1124 Feldpausch, T.R., Lloyd, J., Lewis, S.L., Brien, R.J., Gloor, M., Monteagudo Mendoza, A., Lopez-
1125 Gonzalez, G., Banin, L., et al. 2012. Tree height integrated into pantropical forest biomass estimates.
1126 *Biogeosciences*, 9, 3381-3403.
1127
- 1128 Feldpausch, T.R., Phillips, O.L., Brien, R.J.W., Gloor, E., Lloyd, J., Lopez-Gonzalez, G.,
1129 Monteagudo-Mendoza, A., Malhi, Y., Alarcón, A., Dávila, E.Á. and Alvarez-Loayza, P., 2016. Amazon
1130 forest response to repeated droughts. *Global Biogeochemical Cycles*, 30, 964-982.
1131
- 1132 Ferreira, J., Lennox, G.D., et al. 2018. Carbon-focused conservation may fail to protect the most
1133 biodiverse tropical forests. *Nature Climate Change*. DOI 10.1038/s41558-018-0225-7.
1134
- 1135 Forest Carbon Partnership Facility (FCPF) Carbon Fund, 2017. *Emission Reductions Programme*
1136 *Document (ER-PD)*, *Ghana Cocoa Forest REDD+ Programme (GCFRP)*. World Bank, 339 pp.
1137
- 1138 Fyllas, N.M., Patiño, S., Baker, T.R., Bielefeld Nardoto, G., Martinelli, L.A., Quesada, C.A., Paiva, R.,
1139 Schwarz, M. et al., 2009. Basin-wide variations in foliar properties of Amazonian forest: phylogeny,
1140 soils and climate. *Biogeosciences* 6, 2677-708.
1141
- 1142 Gatti, L.V., Gloor, M., Miller, J.B., Doughty, C.E., Malhi, Y., Domingues, L.G., Basso, L.S. et al. 2014.
1143 Drought sensitivity of Amazonian carbon balance revealed by atmospheric measurements. *Nature*, 506,
1144 76-80.
1145
- 1146 Gaubert, B., Stephens, B.B., Basu, S., Chevallier, F., Deng, F., Kort, E.A., Patra, P.K., Peters, W. et al.,
1147 2019. Global atmospheric CO₂ inverse models converging on neutral tropical land exchange, but
1148 disagreeing on fossil fuel and atmospheric growth rate. *Biogeosciences*, 16, 117-134.
1149
- 1150 Gentry, A.H., 1988a, Tree species richness of upper Amazonian forests. *Proceedings of the National*
1151 *Academy of Sciences*, 85, 156-159.
1152
- 1153 Gentry, A.H., 1988b, Changes in plant community diversity and floristic composition on environmental
1154 and geographical gradients. *Annals of the Missouri Botanical Garden*, 75, 1-34.
1155

- 1156 Gentry, A.H. and Vasquez, R., 1993. *A field guide to the families and genera of woody plants of*
1157 *northwest South America (Colombia, Ecuador, Peru): with supplementary notes on herbaceous taxa.*
1158
- 1159 Gloor, M., Phillips, O.L., Lloyd, J.J., Lewis, S.L., Malhi, Y., Baker, T.R., Lopez-Gonzalez, G., et al.
1160 2009. Does the disturbance hypothesis explain the biomass increase in basin-wide Amazon forest plot
1161 data? *Global Change Biology*, 15, 2418-2430.
1162
- 1163 Gosline, G., Marshall, A.R., Larridon, I., 2019. Revision and new species of the African genus
1164 *Mischogyne* (Annonaceae). *Kew Bulletin*, 74, 28.
1165
- 1166 Gourlet-Fleury, S., F. Mortier, A. Fayolle, F. Baya, D. Ouédraogo, F. Bénédet, and N. Picard, 2013.
1167 Tropical forest recovery from logging: a 24 year silvicultural experiment from Central Africa.
1168 *Philosophical Transactions of the Royal Society B: Biological Sciences* 368, no. 1625: 20120302.
1169
- 1170 Harley, P., Vasconcellos, P., Vierling, L., Pinheiro, C.C.D.S., Greenberg, J., Guenther, A., Klinger, L.,
1171 Almeida, S.S.D., Neill, D., Baker, T., Phillips, O., Malhi, Y. 2004. Variation in potential for isoprene
1172 emissions among Neotropical forest sites. *Global Change Biology*, 10, 630-650.
1173
- 1174 Honorio Coronado E.N., Baker T.R., Phillips O.L., Pitman N.C., Pennington R.T., Vásquez Martínez
1175 R., Monteagudo, A. et al., 2009. Multi-scale comparisons of tree composition in Amazonian terra firme
1176 forests. *Biogeosciences* 30, 2719-31.
1177
- 1178 Hubau, W., Lewis, S.L., Phillips, O.L., Affum-Baffoe K., Beeckman H., Cuní-Sánchez A., Daniels
1179 A.K., Ewango C.E.N. et al. 2020. Asynchronous carbon sink saturation in the world's largest tropical
1180 forests. *Nature* 579, 80-87.
1181
- 1182 Hubbell, S.P., 1979. Tree dispersion, abundance, and diversity in a tropical dry forest. *Science*, 203,
1183 1299-1309.
1184
- 1185 Hubbell, S.P., Foster, R.B., 1983. Diversity of canopy trees in a neotropical forest and implications for
1186 the conservation of tropical trees, In *Tropical Rainforest Ecology and Management*. Eds. S.J. Sutton,
1187 T.C. Whitmore, A.C. Chadwick, pp. 25-41. Blackwell, Oxford.
1188
- 1189 Johnson, M.O., Galbraith, D., Gloor, M., De Deurwaerder, H., Guimberteau, M., Rammig, A.,
1190 Thonicke, K. et al., 2016, Variation in stem mortality rates determines patterns of above-ground
1191 biomass in Amazonian forests: implications for dynamic global vegetation models. *Global Change*
1192 *Biology* 22, 3996-4013.
1193
- 1194 Joint Research Centre (2003) *Global Land Cover 2000 database*. European Commission, Joint
1195 Research Centre. https://forobs.jrc.ec.europa.eu/products/glc2000/data_access.php
1196
- 1197 Jucker, T., Bongalov, B., Burslem, D.F., Nilus, R., Dalponte, M., Lewis, S.L., Phillips, O.L., Qie, L.,
1198 Coomes, D.A., 2018. Topography shapes the structure, composition and function of tropical forest
1199 landscapes. *Ecology Letters* 21, 989-1000.
1200
- 1201 Kohyama, T.S., Kohyama, T.I. and Sheil, D., 2019. Estimating net biomass production and loss from
1202 repeated measurements of trees in forests and woodlands: Formulae, biases and recommendations.
1203 *Forest Ecology and Management*, 433, 729-740.
1204
- 1205 Lawrence, A., Phillips, O.L., Ismodes, A.R., Lopez, M., Rose, S., Wood, D. and Farfan, A.J., 2005.
1206 Local values for harvested forest plants in Madre de Dios, Peru: towards a more contextualised
1207 interpretation of quantitative ethnobotanical data. *Biodiversity & Conservation*, 14, 45-79.
1208

- 1209 Levis, C., Costa, F.R., Bongers, F., Peña-Claros, M., Clement, C.R., Junqueira, A.B., Neves, E.G.,
1210 Tamanaha, E.K., Figueiredo, F.O., Salomão, R.P. and Castilho, C.V., 2017. Persistent effects of pre-
1211 Columbian plant domestication on Amazonian forest composition. *Science*, 355, 925-931.
1212
- 1213 Lewis, S.L., Phillips, O.L., Sheil, D., Vinceti, B., Baker, T.R., Brown, S., Graham, A.W., Higuchi, N.,
1214 Hilbert, D.W., et al., 2004a. Tropical forest tree mortality, recruitment and turnover rates: calculation,
1215 interpretation and comparison when census intervals vary. *Journal of Ecology*, 92, 929-944.
1216
- 1217 Lewis, S.L., Phillips, O.L., Baker, T.R., Lloyd, J., Malhi, Y., Almeida, S., Higuchi, N., Laurance, W.F.,
1218 Neill, D.A., Silva, J.N.M. and Terborgh, J., 2004b. Concerted changes in tropical forest structure and
1219 dynamics: evidence from 50 South American long-term plots. *Philosophical Transactions of the Royal
1220 Society of London. Series B: Biological Sciences*, 359, 421-436.
1221
- 1222 Lewis, S.L., Malhi, Y., Phillips, O.L., 2004. Fingerprinting the impacts of global change on tropical
1223 forests. *Philosophical Transactions of the Royal Society of London. Series B: Biological Sciences*, 359,
1224 437-462.
- 1225 Lewis, S.L., Lopez-Gonzalez, G., Sonké, B., Affum-Baffoe, K., Baker, T.R., Ojo, L.O., Phillips, O.L.,
1226 Reitsma, J.M., White, L., Comiskey, J.A., Ewango, C.E., et al. 2009. Increasing carbon storage in intact
1227 African tropical forests. *Nature*, 457, 1003-1006.
1228
- 1229 Lewis S.L., Sonké, B., Sunderland, T., Begne, S.K., Lopez-Gonzalez, G., van der Heijden, G.M.F.,
1230 Phillips, O.L. et al., 2013. Above-ground biomass and structure of 260 African tropical forests.
1231 *Philosophical Transactions of the Royal Society B: Biological Sciences* 368, 20120295.
1232
- 1233 López-Gonzalez G., Lewis, S.L., Burkitt, M., Phillips, O.L., 2011. ForestPlots.net: a web application
1234 and research tool to manage and analyse tropical forest plot data. *Journal of Vegetation Science* 22,
1235 610-613.
1236
- 1237 López-González, G. and Phillips, O.L., 2012. Estudiando el Amazonas: la experiencia de la Red
1238 Amazónica de Inventarios Forestales. *Revista Ecosistemas*, 21, 1-2.
1239
- 1240 López-Gonzalez G., Sullivan, M.J.P., Baker, T.R., 2015. BiomasaFP: Tools for analysing data
1241 downloaded from ForestPlots.net. R package version 1.1.
1242
- 1243 Malhi, Y., Baker, T.R., Phillips, O.L., Almeida, S., Alvarez, E., Arroyo, L., Chave, J., Czimczik, C.I.,
1244 Fiore, A.D., Higuchi, N. and Killeen, T.J., 2004. The above-ground coarse wood productivity of 104
1245 Neotropical forest plots. *Global Change Biology*, 10, 563-591.
1246
- 1247 Malhi, Y., Girardin, C., Metcalfe, D., Doughty, C., Aragão, L.E.O., Rifai, S., Shenkin, A., Aguirre
1248 Gutierrez, J., Dahlsjö, C. et al. The Global Ecosystems Monitoring network: monitoring ecosystem
1249 productivity and carbon cycling across the tropics. *Biological Conservation* (this volume)
1250
- 1251 Malhi, Y, Phillips, O.L., Lloyd, J., Baker, T., Wright, J., Almeida, S., Arroyo, L., Frederiksen, T., Grace,
1252 J., Higuchi, N. et al., 2002. An international network to monitor the structure, composition and dynamics
1253 of Amazonian forests (RAINFOR). *Journal of Vegetation Science* 13, 439-50.
1254
- 1255 Malhi Y, Wood D, Baker TR, Wright J, Phillips OL, Cochrane T, Meir P, Chave J, Almeida S, Arroyo
1256 L et al., 2006. The regional variation of aboveground live biomass in old-growth Amazonian forests.
1257 *Global Change Biology* 12, 1107-1138.
1258
- 1259 Malhi, Y., Farfán Amézquita, F., Doughty, C.E., Silva-Espejo, J.E., Girardin, C.A., Metcalfe, D.B.,
1260 Aragão, L.E., Huaraca-Quispe, L.P., et al. 2014. The productivity, metabolism and carbon cycle of two
1261 lowland tropical forest plots in south-western Amazonia, Peru. *Plant Ecology & Diversity* 7, 85-105.
1262

- 1263 Malhi, Y., Gardner, T.A., Goldsmith, G.R., Silman, M.R. and Zelazowski, P., 2014. Tropical forests in
1264 the Anthropocene. *Annual Review of Environment and Resources*, 39.
1265
- 1266 Malizia, A, Blundo, C., Carilla, J., Osinaga-Acosta, O., Cuesta, F., Duque, A., Aguirre, N., Aguirre, Z.,
1267 Ataroff, M., Baez, S. et al. (2020). Elevation and latitude drives structure and tree species composition
1268 in Andean forests: results from a large-scale plot Network. *PLoS ONE* (in press)
1269
- 1270 Marimon B.S., Marimon-Junior B.H., Feldpausch T.R., Oliveira-Santos C., Mews H.A. et al., 2014.
1271 Disequilibrium and hyperdynamic tree turnover at the forest–cerrado transition zone in southern
1272 Amazonia. *Plant Ecology & Diversity* 7, 281-92.
1273
- 1274 McDowell, N., Allen, C.D., Anderson-Teixeira, K., Brando, P., Brien, R., Chambers, J.,
1275 Christoffersen, B., Davies, S., Doughty, C., Duque, A. and Espirito-Santo, F., 2018. Drivers and
1276 mechanisms of tree mortality in moist tropical forests. *New Phytologist*, 219, 851-869.
1277
- 1278 Mitchard, E.T.A., Feldpausch, T.R., Brien, R.J.W., Lopez-Gonzalez, G., Monteagudo, A., Baker,
1279 T.R. et al., 2014. Markedly divergent estimates of Amazon forest carbon density from ground plots and
1280 satellites. *Global Ecology and Biogeography*. doi:10.1111/geb.12168.
1281
- 1282 Monteagudo Mendoza A, Vásquez Martínez R., Rojas Gonzales R., Phillips O.L., Baker T.R., Dueñas
1283 Linares H., Pickavance G.C., Núñez Vargas P et al., 2020. Primer Catálogo de los Arboles de la
1284 Amazonía de Madre De Dios, Perú. Universidad Andina del Cusco, Cusco, Peru, 240pp.
1285
- 1286 Nakamura, A., Kitching, R.L., Cao, M., Creedy, T.J., Fayle, T.M., Freiberg, M., Hewitt, C.N., Itioka,
1287 T., et al., 2017. Forests and their canopies: achievements and horizons in canopy science. *Trends in
1288 Ecology & Evolution*, 32, 438-451.
1289
- 1290 Nemani, R. R. et al., 2003. Climate-driven increases in global terrestrial net primary production from
1291 1982 to 1999. *Science* 300, 1560–1563.
1292
- 1293 Nogueira, D.S., Marimon, B.S., Marimon-Junior, B.H., Oliveira, E.A., Morandi, P., Reis, S.M., Elias,
1294 F., Neves, E.C., Feldpausch, T.R., Lloyd, J. and Phillips, O.L., 2019. Impacts of fire on forest biomass
1295 dynamics at the southern Amazon edge. *Environmental Conservation*, 46, 285-292.
1296
- 1297 Norden, N., González-M, R., Avella-M, A., Salgado-Negret, B., Alcázar, C., Rodríguez-Buriticá, S.,
1298 Aguilar-Cano, J., et al., 2020, Building a socio-ecological monitoring platform for the comprehensive
1299 management of tropical dry forests. *Plants, People, Planet*. <https://doi.org/10.1002/ppp3.10113>.
1300
- 1301 Oliveira, E.A., Marimon-Junior, B.H., Iriarte, J., Morandi, P.S., Maezumi, S.Y., Nogueira, D.S.,
1302 Aragão, L.E.O.C. and Feldpausch, T.R. 2020. Legacy of Amazonia Dark Earth soil on forest structure
1303 and species composition. *Global Ecology and Biogeography*, in press.
1304
- 1305 Olson, D.M., Dinerstein, E., Wikramanayake, E.D., Burgess, N.D., Powell, G.V. Underwood, E.C.,
1306 D'Amico, J.A., et al., 2001. Terrestrial ecoregions of the world: a new map of life on Earth. *Bioscience*,
1307 51, 933-938.
1308
- 1309 Pallqui, N.C., Monteagudo, A., Phillips, O.L., Lopez-Gonzalez, G., Cruz, L., Galiano, W., Chavez, W.,
1310 Vasquez, R., 2014. Dinámica, biomasa aérea y composición florística en parcelas permanentes Reserva
1311 Nacional Tambopata, Madre de Dios, Perú. *Revista Peruana de Biología* 21, 235-42.
1312
- 1313 Pan, Y., Birdsey, R.A., Fang, J., Houghton, R., Kauppi, P.E. et al., 2011. A large and persistent carbon
1314 sink in the world's forests. *Science*, 333, 988–993. <https://doi.org/10.1126/science.1201609>.
1315
- 1316 Pan, Y., Birdsey, R.A., Phillips, O.L. and Jackson, R.B., 2013. The structure, distribution, and biomass
1317 of the world's forests. *Annual Review of Ecology, Evolution, and Systematics*, 44, 593-622.

- 1318
1319 Patiño, S., Lloyd, J., Paiva, R., Baker, T.R., Quesada, C.A., Mercado, L.M. et al., 2009. Branch xylem
1320 density variations across the Amazon Basin. *Biogeosciences*, 6, 545-568.
1321
1322 Peacock, J., Baker, T.R., Lewis, S.L., Lopez-Gonzalez, G., Phillips, O.L., 2007. The RAINFOR
1323 database: monitoring forest biomass and dynamics. *Journal of Vegetation Science*, 18, 535-42.
1324
1325 Pennington, T., Lehmann, C.E., Rowland, L. 2018. Tropical savannas and dry forests. *Current Biology*
1326 28, 541-45.
1327
1328 Peres, C.A., Emilio, T., Schiatti, J., Desmoulière, S.J. and Levi, T., 2016. Dispersal limitation induces
1329 long-term biomass collapse in overhunted Amazonian forests. *Proceedings of the National Academy of*
1330 *Sciences*, 113, 892-897.
1331
1332 Phillips, O.L., 1996. Long-term environmental change in tropical forests: increasing tree turnover.
1333 *Environmental Conservation* 23, 235-248.
1334
1335 Phillips, O. and Gentry, A.H., 1993. The useful plants of Tambopata, Peru: I. Statistical hypotheses
1336 tests with a new quantitative technique. *Economic Botany*, 47, 15-32.
1337
1338 Phillips, O.L. and Gentry, A.H., 1994. Increasing turnover through time in tropical forests. *Science*,
1339 263, 954-958.
1340
1341 Phillips, O. L., P. Hall, A. H. Gentry, S. A. Sawyer and R. Vasquez, 1994. Dynamics and species
1342 richness of tropical rain forests. *Proceedings of the National Academy of Sciences of the United States*
1343 *of America* 91, 2805-2809.
1344
1345 Phillips, O.L. and Raven, P.H., 1997. A strategy for sampling neotropical forests. *Neotropical*
1346 *Biodiversity and Conservation*, 1, 141-165.
1347
1348 Phillips, O. and Sheil, D. 1997. Forest turnover, diversity and CO₂. *Trends in Ecology & Evolution* 12,
1349 404-404.
1350
1351 Phillips, O.L., Malhi, Y., Higuchi, N., Laurance, W.F., Núñez, P.V., Vásquez, R.M., Laurance, S.G.,
1352 Ferreira, L.V., Stern, M., Brown, S. and Grace, J., 1998. Changes in the carbon balance of tropical
1353 forests: evidence from long-term plots. *Science*, 282, 439-442.
1354
1355 Phillips, O.L., Baker, T., Feldspach, T., & Brien, R. J. W., 2002. Field manual for plot establishment
1356 and remeasurement (RAINFOR). Amazon Forest Inventory Network, Sixth Framework Programme
1357 (2002–2006). URL: <http://www.geog.leeds.ac.uk/projects/rainfor>.
1358
1359 Phillips, O. and Miller, J.S., 2002, Global patterns of plant diversity: Alwyn H. Gentry's forest transect
1360 data set. *Monographs in Systematic Botany* 89:1-319. Missouri Botanical Press.
1361
1362 Phillips, O.L., Baker, T.R., Arroyo, L., Higuchi, N., Killeen, T.J., Laurance, W.F., Lewis, S.L., Lloyd,
1363 J., Malhi, Y., Monteagudo, A. and Neill, D.A., 2004. Pattern and process in Amazon tree turnover,
1364 1976–2001. *Philosophical Transactions of the Royal Society of London. Series B: Biological Sciences*,
1365 359, 381-407.
1366
1367 Phillips, O.L., Aragão, L.E., Lewis, S.L., Fisher, J.B., Lloyd, J., López-González, G., Malhi, Y.,
1368 Monteagudo, A., Peacock, J., Quesada, C.A. and Van Der Heijden, G., 2009. Drought sensitivity of the
1369 Amazon rainforest. *Science*, 323, 1344-1347.
1370
1371 Phillips, O.L. and Brien, R.J., 2017. Carbon uptake by mature Amazon forests has mitigated Amazon
1372 nations' carbon emissions. *Carbon Balance and Management*, 12, 1.

- 1373
1374 Phillips, O.L., Sullivan, M.J., Baker, T.R., Mendoza, A.M., Vargas, P.N. and Vásquez, R. 2019. Species
1375 matter: wood density influences tropical forest biomass at multiple scales. *Surveys in Geophysics*, 404,
1376 913-935.
1377
1378 Piao, S., Wang, X., Park, T., Chen, C., Lian, X., He, Y., Bjerke, J.W., Chen, A., Ciais, P., Tømmervik,
1379 H. and Nemani, R.R., 2019. Characteristics, drivers and feedbacks of global greening. *Nature Reviews*
1380 *Earth & Environment*, pp.1-14.
1381
1382 Pires, J.M. and Salomão, R.P. 2000. Dinâmica da diversidade arbórea de um fragmento de floresta
1383 tropical primária na Amazônia oriental - 1. Período: 1956 a 1992. *Bol. Mus. Para. Emílio goeldi, Sér.*
1384 *Botânica*, 16, 63-110.
1385
1386 Pomeroy, M., R. B. Primack, and S. N. Rai. 2003. Changes in four rain forest plots of the Western
1387 Ghats, India, 1939–93. *Conservation and Society* 1, 113–135.
1388
1389 Qie L, Lewis SL, Sullivan MJ, Lopez-Gonzalez G, Pickavance GC, Sunderland T, Ashton P, Hubau W
1390 et al., 2017, Long-term carbon sink in Borneo’s forests halted by drought and vulnerable to edge effects.
1391 *Nature Communications* 8:1966.
1392
1393 Quesada CA, Phillips OL, Schwarz M, Czimczik CI, Baker TR, Patiño S, Fyllas NM, Hodnett MG,
1394 Herrera R et al., 2012. Basin-wide variations in Amazon forest structure and function are mediated by
1395 both soils and climate. *Biogeosciences* 9, 2203-2246. doi:10.5194/bg-9-2203-2012.
1396
1397 Reboredo Segovia, A.L., Romano, D., Armsworth, P.R., 2020. Who studies where? Boosting tropical
1398 conservation research where it is most needed. *Frontiers in Ecology and the Environment*, 18, 159-166.
1399
1400 Requena Suarez, D., Rozendaal, D.M., De Sy, V., Phillips, O.L., Alvarez-Dávila, E., Anderson-
1401 Teixeira, K., Araujo-Murakami, A., Arroyo, L., Baker, T.R., Bongers, F., et al., 2019. Estimating
1402 aboveground net biomass change for tropical and subtropical forests: Refinement of IPCC default rates
1403 using forest plot data. *Global Change Biology*, 25, 3609-3624.
1404
1405 Reis, S.M., Marimon, B.S., Marimon-Junior, B.H., Morandi, P.S., Oliveira, E.A., Eias, F., Neves, E.C.,
1406 Oliveira, B., Nogueira, D.S., Umetsu, R.K., Feldpausch, T.R. and Phillips, O.L., 2018. Climate and
1407 fragmentation affect forest structure at the Southern border of Amazonia. *Plant Ecology & Diversity*,
1408 11, 13-25.
1409
1410 Reitsma, J.M. 1988. *Forest vegetation of Gabon*. TROPENBOS Technical Series, ISBN: 90-5113-007-
1411 4.
1412
1413 Ríos-Saldaña, C.A., Delibes-Mateos, M. and Ferreira, C.C., 2018. Are fieldwork studies being relegated
1414 to second place in conservation science? *Global Ecology and Conservation*, 14, p.e00389.
1415
1416 Rowland, L., da Costa, A.C.L., Galbraith, D.R., Oliveira, R.S., Binks, O.J., Oliveira, A.A.R., Pullen,
1417 A.M., Doughty, C.E., Metcalfe, D.B., Vasconcelos, S.S. and Ferreira, L.V., 2015. Death from drought
1418 in tropical forests is triggered by hydraulics not carbon starvation. *Nature*, 528,119-122.
1419
1420 Salomão, R.D., 1991. Uso de parcelas permanentes para estudos da vegetação da floresta tropical
1421 úmida. I. Município de Marabá, Pará. Boletim do Museu Paraense Emílio Goeldi. *Serie Botânica*, 7,
1422 543-604.
1423
1424 Schepaschenko, D., Chave, J., Phillips, O.L. et al., 2019. The Forest Observation System, building a
1425 global reference dataset for remote sensing of forest biomass. *Sci Data* 6, 198 (2019).
1426 <https://doi.org/10.1038/s41597-019-0196-1>
1427

- 1428 Schietti, J., Martins, D., Emilio, T., Souza, P.F., Levis, C., Baccaro, F.B., et al. 2016. Forest structure
1429 along a 600 km transect of natural disturbances and seasonality gradients in central-southern Amazonia.
1430 *Journal of Ecology*, 104, 1335-1346.
- 1431
- 1432 Sheil, D., 1995. Evaluating turnover in tropical forests. *Science*, 268, 894-896.
- 1433
- 1434 Sheil, D., 1996. Species richness, tropical forest dynamics and sampling: questioning cause and
1435 effect. *Oikos*, 76, 587-590.
- 1436
- 1437 Sist, P., Rutishauser, E., Peña-Claros, M., Shenkin, A., Hérault, B., Blanc, L., Baraloto, C., Baya, F.,
1438 Benedet, F., da Silva, K.E., Descroix, L., et al. 2015. The Tropical managed Forests Observatory: a
1439 research network addressing the future of tropical logged forests. *Applied Vegetation Science*, 18, 171-
1440 174.
- 1441
- 1442 Sousa, T.R., Schietti, J., Coelho de Souza, F., Esquivel-Muelbert, A., Ribeiro, I.O., Emílio, T. et al.,
1443 2020. Palms and trees resist extreme drought in Amazon forests with shallow water tables. *Journal of*
1444 *Ecology*.
- 1445
- 1446 Steidinger, B.S., Crowther, T.W., Liang, J., Van Nuland, M.E., Werner, G.D., Reich, P.B., Nabuurs,
1447 G.J., et al., 2019. Climatic controls of decomposition drive the global biogeography of forest-tree
1448 symbioses. *Nature*, 569, 404-408.
- 1449
- 1450 Sullivan, M.J., Talbot, J., Lewis, S.L., Phillips, O.L., Qie, L., Begne, S.K., Chave, J., Cuni-Sanchez, A.,
1451 Hubau, W., Lopez-Gonzalez, G. and Miles, L., 2017. Diversity and carbon storage across the tropical
1452 forest biome. *Scientific Reports*, 7, 1-12.
- 1453
- 1454 Sullivan, M.J., Lewis, S.L., Hubau, W., Qie, L., Baker, T.R., Banin, L.F., Chave, J., Cuni-Sanchez, A.,
1455 Feldpausch, T.R., et al., 2018. Field methods for sampling tree height for tropical forest biomass
1456 estimation. *Methods in Ecology and Evolution*, 9, 1179-1189.
- 1457
- 1458 Sullivan, M.J.P., Lewis, S.L., Affum-Baffoe, K., Castilho, C., Costa, F., Cuni Sanchez, A., Ewango,
1459 C.E.N., Hubau, W., Marimon, B., Monteagudo-Mendoza, A., et al., 2020. Long-term thermal sensitivity
1460 of Earth's tropical forests. *Science* 368, 869-874. DOI: 10.1126/science.aaw7578.
- 1461
- 1462 Taylor, J.A. and Lloyd, J., 1992. Sources and sinks of atmospheric CO₂. *Australian Journal of Botany*
1463 40, 407-418.
- 1464
- 1465 ter Steege, H., Pitman, N., Sabatier, D., Castellanos, H., Van Der Hout, P., Daly, D.C., Silveira, M., et
1466 al., 2003. A spatial model of tree α -diversity and tree density for the Amazon. *Biodiversity &*
1467 *Conservation*, 12, 2255-2277.
- 1468
- 1469 ter Steege, H., Pitman, N.C., Phillips, O.L., Chave, J., Sabatier, D., Duque, A., Molino, J.F., Prévost,
1470 M.F., Spichiger, R., Castellanos, H., Von Hildebrand, P., 2006. Continental-scale patterns of canopy
1471 tree composition and function across Amazonia. *Nature* 443, 444-447.
- 1472
- 1473 ter Steege, H., Pitman, N.C., Sabatier, D., Baraloto, C., Salomão, R.P., Guevara, J.E., Phillips, O.L.,
1474 Castilho CV et al., 2013. Hyperdominance in the Amazonian tree flora. *Science* 342, 1243092.
- 1475
- 1476 Terrer, C. et al., 2019. Nitrogen and phosphorus constrain the CO₂ fertilization of global plant biomass.
1477 *Nature Climate Change* 9, 684–689.
- 1478
- 1479 Vargas, R., Alcaraz-Segura, D., Birdsey, R., Brunsell, N.A., Cruz-Gaistardo, C.O., de Jong, B.,
1480 Etchevers, J., Guevara, M., Hayes, D.J., Johnson, K. and Loescher, H.W., 2017. Enhancing
1481 interoperability to facilitate implementation of REDD+: Case study of Mexico. *Carbon Management*,
1482 8, 57-65.

- 1483
1484 Vásquez, R., Rojas, R., Monteagudo, A.M., Valenzuela, L.G., Huamantupa, I., 2018. *Catálogo de los*
1485 *Arboles del Perú*. Q'ueña Revista de la Sociedad Botánica del Cusco 9 (1), número especial.
1486
1487 Vásquez, M. R. & Soto Shareva, Y. 2020. *Virola pseudosebifera* (Myristicaceae), una nueva especie
1488 para la Selva Alta del Perú. *Revista Q'ueña*, 10, 07-12.
1489
1490 Vicuña Miñano, E., Baker, T.R., Banda, K., Coronado, E.H., Monteagudo, A., Phillips, O.L., Torres,
1491 D.D.C., Rios, W.F., Flores, G., Huaman, D. and Huaman, K.T., 2018. El sumidero de carbono en los
1492 bosques primarios Amazónicos es una oportunidad para lograr la sostenibilidad de su conservación.
1493 *Folia Amazónica*, 27, 101-109.
1494
1495 Vilanova, E., Ramírez-Angulo, H., Torres-Lezama, A., Aymard, G., Gámez, L., Durán, C., Hernández,
1496 L., Herrera, R., van der Heijden, G., Phillips, O.L. and Ettl, G.J., 2018. Environmental drivers of forest
1497 structure and stem turnover across Venezuelan tropical forests. *PloS one*, 13(6).
1498
1499 Villela, D.M., Nascimento, M.T., de Aragao, L.E.O. and Da Gama, D.M., 2006. Effect of selective
1500 logging on forest structure and nutrient cycling in a seasonally dry Brazilian Atlantic forest. *Journal of*
1501 *Biogeography*, 33, 506-516.
1502
1503 Weger, M.J.A. (ed.). 2011. *Sustainable Management of Tropical Rainforests: the CELOS Management*
1504 *System*. Tropenbos International, Paramaribo, Suriname.
1505
1506 Wright, S.J. (this volume). The Smithsonian Tropical Research Institute: ecological and applied
1507 research. *Biological Conservation*.
1508
1509 Wurdack, K.J. and Farfan-Rios, W., 2017. *Incadendron*: a new genus of Euphorbiaceae tribe
1510 Hippomaneae from the sub-Andean cordilleras of Ecuador and Peru. *PhytoKeys*, 85, 69-86.
1511

- 1512 Taking the Pulse of Earth’s Tropical Forests using Networks of Highly Distributed Plots
- 1513 Author: ForestPlots.net (Cecilia Blundo, Julieta Carilla, Ricardo Grau, Hieu Dang Tran)
- 1514 Corresponding author: Oliver L. Phillips
- 1515
- 1516 Table 1 of Contributing Networks
- 1517 and
- 1518 Table of Contributing Authors
- 1519
- 1520

1521 **Table 1. Networks contributing to ForestPlots.net**

1522 We report the 24 international, national, and regional plot networks contributing to and supported by ForestPlots.net in 2020, in order of date of affiliation. Note
 1523 that some plots contribute to more than one network, in some cases the plots managed at ForestPlots.net are fewer than the total number of plots of the network,
 1524 while others are not ‘networked’ but managed by individual researchers. Hence, cross-network totals do not correspond precisely to the number of plots
 1525 managed. We include 20 tropical networks with multi-census plots plus four large-scale floristic-focussed networks (ATDN, CAO, sANDES, RedGentry) that
 1526 work exclusively with single-census data. As an open collaborative project ForestPlots.net welcomes all contributors with carefully-managed plots.

Network ¹	Geography	Main Purposes ²	Joined ForestPlots.net	Initiated [e.g. plots censused as a network]	First census in ForestPlots.net	n (plots in ForestPlots.net)	n (plots recensued)	Modal plot	Mean size (ha)	Mean (maximum) years monitored
RAINFOR	South America: tropical forests	B,D,F,M,T,V	2000	2000	1961	593	427	1-ha, >10cm d	0.8	15 (56)
DBTV	Venezuela: tropical forests	B,D,M,T	2004	1956	1961	48	48	0.25-ha, >10cm d	0.25	30 (55)
COL-TREE	Colombia	B,D,F,H,M,R,V	2004	2004	1992	61	55	1-ha, >10cm d	0.8	9 (25)
TROBIT	Pantropical: forest-savanna transition	B,D,F,H,R,T	2006	2006	2006	58	49	1-ha, >10cm d	1	12
AfriTRON	Africa: tropical forests	B,D,F,M	2009	2009	1939	575	407	1-ha, >10cm d	0.9	11 (69)
ABERG	Peru Andes: Kosñipata Valley	B,D,F,M,P,T	2011	2011	2003	23	23	1-ha, >10cm d	1	12 (16)
T-FORCES	Southeast Asia: tropical forests	B,D,F,H,M	2012	2012	1958	95	71	1-ha, >10cm d	1.3	22 (56)
GEM	Worldwide	D,H,M,P,R,T	2012	2010	2010	53	45	1-ha, >10cm d	0.8	5 (16)
PELD-TRAN	Brazil: Amazon-Cerrado transition	B,D,F,H,M,R,T,V	2012	2010	1996	48	45	1-ha, >10cm d	1	9 (22)
DRYFLOR	Latin America and Caribbean dry forests	B,D,F,H,M,R,T,V	2013	2012	2007	39	8	0.5-ha, >5cm d	0.3	7 (8)
ATDN	Amazonia: tropical forests	F,V	2014	2003	1974	413	N/A	1-ha, >10cm d	1	N/A
PPBio	Brazil: forests and savanna	B,D,F,H,M,T,V	2015	2004	2000	277	205	1-ha, >10cm d ³	0.9	7 (17)
BIOTA	Brazil: São Paulo state, Atlantic forests	B,D,F,H,M,P,R,T,V	2016	2005	2005	20	18	1-ha, >10cm d	0.9	11 (14)

FATE	Brazil: Amazon fire-impacted	B,D,H,M,R,S,T	2016	2014	2009	57	38	0.25-ha, >10cm d ³	0.3	4 (10)
RAS	Brazil: Para state	B,D,F,H,M,P,R,T,U,V	2016	2009	1999	256	59	0.25-ha, >10cm d ³	0.26	6 (20)
MonANPeru	Peru	B,D,F,H,M,R,U,V	2017	2017	1974	128	103	1-ha, >10cm d	1	15 (43)
Nordeste	Brazil: Caatinga biome	B,D,F,H,M,R,T	2017	2017	2017	33	3	0.5-ha, >10cm d	0.5	3
SEOSAW	Southern Africa woodlands	B,D,F,H,M,R,S,T,U,V	2018	2018	2006	113	98	1-ha, >5cm d	0.5	9 (15)
Red BST-Col	Colombia: dry forests	B,D,F,H,M,R,U,V	2018	2014	2014	11	1	1-ha, >2.5cm d	1	3 (3)
CAO	Peru Amazon-Andes	B,F,S,T,V	2019	2009	2009	276	N/A	0.28-ha, >5cm d	0.28	N/A
RedSPP	Argentina: subtropical	B,D,F,H,M,R,V	2019	2019	1992	16	7	1-ha, >10cm d	1.4	10 (25)
RBA	South America: Andean forests	B,D,F,H,M,R,V	2020	2012	1992	46	34	1-ha, >10cm d	1	11 (25)
sANDES	South America: Andean forests	B,F,V	2020	2019	2003	191	N/A	0.1-ha, >2.5cm d	0.4	N/A
AfriMont	Africa: tropical montane forests	B,H,M,U,V	2020	2020	1939	105	N/A	1-ha, >10cm d	0.6	10 (69)
RedGentry	South America: Amazon forests	F,V	2020	2020	1983	350	N/A	0.1-ha, >2.5cm d	0.2	N/A

1527

1528 **Footnotes**1529 **1 Full Network Names:**

1530 Red Amazónica de Inventarios Forestales (RAINFOR)

1531 Dinámica y crecimiento del Bosque Tropical Venezolano (DBTV)

1532 Tropical Biomes in Transition (TROBIT)

1533 African Tropical Rainforest Observation Network (AfriTRON)

1534 Andes Biodiversity and Ecosystem Research Group (ABERG)

1535 Tropical Forests in the Changing Earth System (T-FORCES)

1536 Red Colombiana de Monitoreo de los Bosques (COL-TREE)

1537 Global Ecosystems Monitoring (GEM)

1538 Programa Ecológico de Longa Duração (PELD-TRAN)

1539 Amazon Tree Diversity Network (ATDN)

1540 Programa de Pesquisa em Biodiversidade (PPBio)

- 1541 Programa de Pesquisas em Caracterização, Conservação e Uso Sustentável da Biodiversidade (BIOTA)
- 1542 Fire-Associated Transient Emissions (FATE)
- 1543 Rede Amazônia Sustentável (RAS)
- 1544 Monitoreo de las Areas Naturales Protegidos del Peru (MonANPeru)
- 1545 Projeto Nordeste (Nordeste)
- 1546 A Socio-Ecological Observatory for Southern African Woodlands (SEOSAW)
- 1547 Red de Investigación y Monitoreo del Bosque Seco Tropical en Colombia (Red BST-Col)
- 1548 Carnegie Airborne Observatory (CAO)
- 1549 Red Subtropical de Parcelas Permanentes (RedSPP)
- 1550 Red de Bosques Andinos (RBA)
- 1551 Tree Diversity, Composition and Carbon in Andean Montane Forests (sANDES)
- 1552 African tropical Montane forest network (AfriMont)
- 1553 Red de parcelas Gentry (RedGentry)
- 1554
- 1555 **2 Purpose:** **B**iomass; **D**ynamics (mortality, recruitment, growth); **F**loristic composition; **H**uman-impacts (fire, logging, fragmentation); **M**onitoring carbon storage, sink, change; **P**roductivity and carbon-cycle; **R**ecovery and restoration, Remote-**S**ensing calibration/validation; **T**raits; Sustainable **U**se; **D**i**V**ersity
- 1556
- 1557 **3** = with nested sub-plots for smaller stems
- 1558

Taking the Pulse of Earth's Tropical Forests using Networks of Highly Distributed Plots

Authors:

ForestPlots.net, Cecilia Blundo, Julieta Carilla, Ricardo Grau, Hieu Dang Tran

Corresponding author: Oliver L. Phillips

Author Table of All Contributing Authors To Be Listed as Authors of This Paper:

Country	First Name	Last Name	Institution
Argentina	Cecilia	Blundo	Instituto de Ecología Regional (IER); Universidad Nacional de Tucumán (UNT); Consejo Nacional de Investigaciones Científicas y Técnicas (CONICET)
Argentina	Julieta	Carilla	Instituto de Ecología Regional (IER); Universidad Nacional de Tucumán (UNT); Consejo Nacional de Investigaciones Científicas y Técnicas (CONICET)
Argentina	Ricardo	Grau	Instituto de Ecología Regional (IER); Universidad Nacional de Tucumán (UNT); Consejo Nacional de Investigaciones Científicas y Técnicas (CONICET)
Argentina	Agustina	Malizia	Instituto de Ecología Regional (IER); Universidad Nacional de Tucumán (UNT); Consejo Nacional de Investigaciones Científicas y Técnicas (CONICET)
Argentina	Lucio	Malizia	Facultad de Ciencias Agrarias, Universidad Nacional de Jujuy. Jujuy, Argentina.
Argentina	Oriana	Osinaga-Acosta	Instituto de Ecología Regional (IER); Universidad Nacional de Tucumán (UNT); Consejo Nacional de Investigaciones Científicas y Técnicas (CONICET)
Australia	Michael	Bird	James Cook University (JCU)
Australia	Matt	Bradford	CSIRO (Commonwealth Scientific and Industrial Research Organisation)
Australia	Damien	Catchpole	School of Land & Food University of Tasmania
Australia	Andrew	Ford	CSIRO (Commonwealth Scientific and Industrial Research Organisation)
Australia	Andrew	Graham	CSIRO Tropical Forest Research Centre
Australia	David	Hilbert	Independent researcher
Australia	Jeanette	Kemp	Environmental Protection Agency (EPA)
Australia	Susan	Laurance	Centre for Tropical Environmental and Sustainability Science (TESS) and College of Marine and Environmental Sciences, James Cook University
Australia	William	Laurance	Centre for Tropical Environmental and Sustainability Science (TESS) and College of Marine and Environmental Sciences, James Cook University
Australia	Francoise	Yoko Ishida	Centre for Tropical Environmental and Sustainability Science, College of Science and Engineering, James Cook University
Australia	Andrew	Marshall	University of the Sunshine Coast; University of York; Flamingo Land Ltd.
Australia	Catherine	Waite	University of the Sunshine Coast
Austria	Hannsjoerg	Woell	Sommersbergseestrasse
Belgium	Jean-Francois	Bastin	Ghent University
Belgium	Marijn	Bauters	CAVElab, Ghent University
Belgium	Hans	Beeckman	Royal Museum for Central Africa - Service of Wood Biology
Belgium	Pfascal	Boeckx	Isotope Bioscience Laboratory-ISOFYS, Ghent University
Belgium	Jan	Bogaert	Gembloux Agro-Bio Tech, Université de Liege
Belgium	Charles	De Canniere	Landscape Ecology and Vegetal Production Systems Unit
Belgium	Thales	de Haulleville	CAVElab Computational & Applied Vegetation Ecology, Ghent University

Belgium	Jean-Louis	Doucet	Tropical Forestry, Forest Ressources Management, Gembloux Agro-Bio Tech, University of Liege
Belgium	Olivier	Hardy	Université Libre de Bruxelles (ULB) Evolutionary Biology and Ecology
Belgium	Wannes	Hubau	Royal Museum for Central Africa, Belgium
Belgium	Elizabeth	Kearsley	Royal Museum for Central Africa, Ghent University
Belgium	Hans	Verbeeck	Department of Environment, Ghent University
Belgium	Jason	Vleminckx	Service Evolution Biologique et Ecologie
Belize	Steven W.	Brewer	Belize Foundation for Research and Environmental Education
Bolivia	Alfredo	Alarcón	IBIF
Bolivia	Alejandro	Araujo-Murakami	Museo de Historia Natural Noel Kempff Mercado, Universidad Autonoma Gabriel Rene Moreno
Bolivia	Eric	Arets	PROMAB
Bolivia	Luzmila	Arroyo	Museo de Historia Natural Noel Kempff Mercado, Universidad Autonoma Gabriel Rene Moreno
Bolivia	Ezequiel	Chavez	Museo Noel Kempff
Bolivia	Todd	Fredericksen	IBIF
Bolivia	René	Guillén Villaruel	Consultor independiente
Bolivia	Gloria	Gutierrez Sibauty	Jardin Botanico Municipal de Santa Cruz
Bolivia	Timothy	Killeen	Museo de Historia Natural Noel Kempff Mercado
Bolivia	Juan Carlos	Licona	IBIF
Bolivia	John	Lleigue	PROMAB
Bolivia	Casimiro	Mendoza	Forest Management in Bolivia
Bolivia	Samaria	Murakami	PROMAB
Bolivia	Alexander	Parada Gutierrez	Museo de Historia Natural Noel Kempff Mercado, Universidad Autónoma Gabriel Rene Moreno
Bolivia	Guido	Pardo	Universidad Autónoma del Beni Riberalta
Bolivia	Marielos	Peña-Claros	PROMAB
Bolivia	Lourens	Poorter	PROMAB
Bolivia	Marisol	Toledo	Museo de Historia Natural Noel Kempff
Bolivia	Jeanneth	Villalobos Cayo	Herbario del Sur de Bolivia
Bolivia	Laura Jessica	Viscarra	Museo de Historia Natural Noel Kempff Mercado
Bolivia	Vincent	Vos	Universidad Autónoma del Beni
Brazil	Jorge	Ahumada	Conservation International
Brazil	Everton	Almeida	Instituto de Biodiversidade e Floresta, Universidade Federal do Oeste do Pará
Brazil	Jarcilene	Almeida	Universidade Federal de Pernambuco
Brazil	Edmar	Almeida de Oliveira	Universidade do Estado de Mato Grosso
Brazil	Wesley	Alves da Cruz	Universidade do Estado de Mato Grosso (UNEMAT)
Brazil	Atila	Alves de Oliveira	Projeto TEAM – Manaus
Brazil	Fabício	Alvim Carvalho	Universidade Federal de Juiz de Fora (UFJF)
Brazil	Flávio	Amorim Obermuller	Universidade Federal do Rio de Janeiro
Brazil	Ana	Andrade	Instituto Nacional de Pesquisas da Amazônia, Projeto Dinâmica Biológica de Fragmentos Florestais
Brazil	Fernanda	Antunes Carvalho	Departamento de Genética, Ecologia e Evolução. Universidade Federal de Minas Gerais
Brazil	Simone	Aparecida Vieira	Universidade Estadual de Campinas
Brazil	Ana Carla	Aquino	Laboratório de Ecologia de Comunidades e Funcionamento de Ecossistemas- ECoFERP, Departamento de Biologia, Faculdade de Filosofia, Ciências e Letras - USP- Ribeirão Preto-SP
Brazil	Luiz	Aragão	National Institute for Space Research (INPE)
Brazil	Ana Claudia	Araújo	Universidade Federal de Roraima (UFRR)

Brazil	Marco Antonio	Assis	UNESP - São Paulo State University
Brazil	Jose	Ataliba Mantelli Aboin Gomes	Carbonozero Consultoria Ambiental
Brazil	Fabício	Baccaro	Departamento de Biologia, Universidade Federal do Amazonas (UFAM)
Brazil	Plínio	Barbosa de Camargo	Centro de Energia Nuclear na Agricultura, Universidade de São Paulo
Brazil	Paulo	Barni	UERR - Campus Rorainópolis
Brazil	Jorcely	Barroso	Universidade Federal do Acre
Brazil	Luis Carlos	Bernacci	Instituto Agronômico de Campinas
Brazil	Kauane	Bordin	Universidade Federal do Rio Grande do Sul
Brazil	Marcelo	Brilhante de Medeiros	Embrapa
Brazil	Igor	Broggio	Universidade Estadual do Norte Fluminense (UENF)
Brazil	José Luís	Camargo	Instituto Nacional de Pesquisas da Amazônia, Projeto Dinâmica Biológica de Fragmentos Florestais
Brazil	Domingos	Cardoso	Universidade Federal da Bahia (UFBA)
Brazil	Maria Antonia	Carniello	Universidade do Estado de Mato Grosso (UNEMAT)
Brazil	Andre Luis	Casarin Rochelle	Instituto de Biologia, Universidade Estadual de Campinas
Brazil	Carolina	Castilho	Embrapa Roraima
Brazil	Antonio Alberto Jorge Farias	Castro	Universidade Federal do Piauí, Teresina (UFPI)
Brazil	Wendeson	Castro	Botany and Plant Ecology Laboratory, Federal University of Acre
Brazil	Sabina	Cerruto Ribeiro	Universidade Federal do Acre
Brazil	Flávia	Costa	INPA- Instituto Nacional de Pesquisas da Amazônia
Brazil	Rodrigo	Costa de Oliveira	UERR - Campus Boa Vista
Brazil	Italo	Coutinho	Universidade Federal do Ceará
Brazil	John	Cunha	Universidade Federal de Campina Grande
Brazil	Lola	da Costa	Universidade Federal do Para
Brazil	Lucia	da Costa Ferreira	Núcleo de Estudos e Pesquisas Ambientais, Universidade Estadual de Campinas
Brazil	Richarly	da Costa Silva	Instituto Federal de Educação, Ciência e Tecnologia do Acre
Brazil	Marta	da Graça Zacarias Simbine	Universidade Estadual de Campinas
Brazil	Vitor	de Andrade Kamimura	UNESP - São Paulo State University
Brazil	Haroldo Cavalcante	de Lima	Instituto de Pesquisas Jardim Botânico do Rio de Janeiro
Brazil	Lia	de Oliveira Melo	Universidade Federal do Oeste do Pará
Brazil	Luciano	de Queiroz	UEFS - Depto. de Ciências Biológicas
Brazil	José Romualdo	de Sousa Lima	Universidade Federal do Agreste de Pernambuco (UFAPE)
Brazil	Mário	do Espírito Santo	Universidade Estadual de Montes Claros
Brazil	Tomas	Domingues	FFCLRP-USP/Br
Brazil	Nayane Cristina	dos Santos Prestes	UNEMAT
Brazil	Steffan	Eduardo Silva Carneiro	Universidade Federal de Jataí
Brazil	Fernando	Elias	Universidade Federal do Pará, Instituto de Ciências Biológicas
Brazil	Gabriel	Eliseu	Universidade Federal de Jataí
Brazil	Thaise	Emilio	Universidade de Campinas
Brazil	Camila Laís	Farrapo	Universidade Federal de Lavras (UFLA)
Brazil	Letícia	Fernandes	Universidade Federal do Acre

Brazil	Gustavo	Ferreira	Universidade Federal de Jatai
Brazil	Joice	Ferreira	Embrapa
Brazil	Leandro	Ferreira	Museu Goeldi
Brazil	Socorro	Ferreira	Embrapa Amazônia Oriental
Brazil	Marcelo	Fragomeni Simon	EMBRAPA
Brazil	Maria Aparecida	Freitas	Instituto Nacional de Pesquisas da Amazônia
Brazil	Queila S	García	UFMG - Universidade Federal de Minas Gerais
Brazil	Angelo	Gilberto Manzatto	Fundação Universidade Fedral de Rondônia - UNIR
Brazil	Paulo	Graça	INPA- Instituto Nacional de Pesquisas Amazônicas
Brazil	Frederico	Guilherme	Universidade Federal de Jatai
Brazil	Eduardo	Hase	Instituto Nacional de Pesquisas da Amazônia
Brazil	Niro	Higuchi	Instituto Nacional de Pesquisas da Amazônia - Coordenação de Pesquisas em Silvicultura Tropical
Brazil	Mariana	Iguatemy	Jardim Botânico do Rio de Janeiro
Brazil	Reinaldo	Imbrozio Barbosa	National Institute for Research in Amazonia
Brazil	Margarita	Jaramillo	Universidade Federal de Roraima (UFRR/PRONAT)
Brazil	Carlos	Joly	Universidade Estadual de Campinas/UNICAMP
Brazil	Joice	Klipel	Universidade Federal do Rio Grande do Sul (UFRGS)
Brazil	Iêda	Leão do Amaral	Instituto Nacional de Pesquisas da Amazônia/CPBO
Brazil	Carolina	Levis	Universidade Federal de Santa Catarina (UFSC)
Brazil	Antonio S	Lima	Museu Goeldi
Brazil	Maurício	Lima Dan	INCAPER- Instituto Capixaba de Pesquisa, Assistência Técnica e Extensão Rural
Brazil	Aline	Lopes	INPE- Instituto Nacional de Pesquisas Espaciais
Brazil	Herison	Madeiros	Universidade de São Paulo
Brazil	William E.	Magnusson	INPA- Instituto Nacional de Pesquisas da Amazônia
Brazil	Rubens	Manoel dos Santos	Universidade Federal de Lavras (UFLA)
Brazil	Beatriz	Marimon	Universidade do Estado de Mato Grosso
Brazil	Ben Hur	Marimon Junior	Universidade do Estado de Mato Grosso
Brazil	Roberta	Marotti Martelletti Grillo	Instituto de Biociências, Universidade Estadual Paulista
Brazil	Luiz	Martinelli	Centro de Energia Nuclear na Agricultura, Universidade de São Paulo
Brazil	Simone	Matias Reis	Universidade do Estado de Mato Grosso
Brazil	Salomão	Medeiros	Semiarid National Institute (INSA)
Brazil	Milton	Meira-Junior	Universidade de Brasília, Departamento de Engenharia Florestal
Brazil	Thiago	Metzker	IBAM - Instituto Bem Ambiental
Brazil	Paulo	Morandi	Universidade do Estado de Mato Grosso, Campus de Nova Xavantina
Brazil	Natanael	Moreira do Nascimento	Universidade Federal de Jatai
Brazil	Magna	Moura	EMBRAPA
Brazil	Sandra Cristina	Müller	Universidade Federal do Rio Grande do Sul
Brazil	Laszlo	Nagy	University in Campinas
Brazil	Henrique	Nascimento	Instituto Nacional de Pesquisas da Amazônia
Brazil	Marcelo	Nascimento	Universidade Estadual do Norte Fluminense Darcy Ribeiro (UENF)
Brazil	Adriano	Nogueira Lima	LMF, Instituto Nacional de Pesquisas da Amazônia
Brazil	Raimunda	Oliveira de Araújo	Instituto Nacional de Pesquisas da Amazônia
Brazil	Jhonathan	Oliveira Silva	Universidade Federal do Vale do São Francisco
Brazil	Marcelo	Pansonato	USP- University of São Paulo
Brazil	Gabriel	Pavan Sabino	UNESP - São Paulo State University

Brazil	Karla Maria	Pedra de Abreu	Instituto Federal do Espírito Santo (IFES)
Brazil	Pablo José Francisco	Pena Rodrigues	Instituto de Pesquisas Jardim Botânico do Rio de Janeiro
Brazil	Maria	Piedade	INPA- Instituto Nacional de Pesquisas da Amazônia - Grupo MAUA
Brazil	Domingos	Rodrigues	Universidade Federal de Mato Grosso, Instituto de Ciências Naturais, Humanas e Sociais, Sinop
Brazil	José Roberto	Rodrigues Pinto	Universidade de Brasília, Departamento de Engenharia Florestal
Brazil	Carlos	Quesada	Instituto Nacional de Pesquisas da Amazônia
Brazil	Eliana	Ramos	Instituto Nacional da Mata Atlântica
Brazil	Rafael	Ramos	Universidade Estadual de Campinas
Brazil	Priscyla	Rodrigues	Universidade Federal do Vale do São Francisco
Brazil	Thaiane	Rodrigues de Sousa	RAINFOR-PPBIO
Brazil	Rafael	Salomão	Universidade Federal Rural da Amazônia - UFRA/CAPES
Brazil	Flávia	Santana	Instituto Nacional de Pesquisas da Amazônia
Brazil	Marcos	Scaranello	Instituto de Biologia, Universidade Estadual de Campinas
Brazil	Rodrigo	Scarton Bergamin	Universidade Federal do Rio Grande do Sul
Brazil	Juliana	Schietti	Universidade Federal do Amazonas (UFAM)
Brazil	Jochen	Schöngart	INPA/ Max-Planck Project
Brazil	Gustavo	Schwartz	EMBRAPA- Empresa Brasileira de Pesquisa Agropecuária (Amazônia Oriental)
Brazil	Natalino	Silva	Serviço Florestal Brasileiro
Brazil	Marcos	Silveira	Museu Universitário, Universidade Federal do Acre
Brazil	Cristiana	Simão Seixas	Universidade Estadual de Campinas
Brazil	Marta	Simbine	Instituto de Biologia, Universidade Estadual de Campinas
Brazil	Ana Claudia	Souza	UNESP - São Paulo State University
Brazil	Priscila	Souza	INPA- Instituto Nacional de Pesquisas da Amazônia
Brazil	Rodolfo	Souza	Universidade Federal Rural de Pernambuco
Brazil	Tereza	Sposito	IBAM - Instituto Bem Ambiental
Brazil	Edson	Stefani Junior	Instituto de Biologia, Universidade Estadual de Campinas
Brazil	Julio Daniel do	Vale	PUCPR - Pontifícia Universidade Católica do Paraná
Brazil	Ima Célia Guimarães	Vieira	Museu Paraense Emilio Goeldi
Brazil	Dora	Villela	Universidade Estadual do Norte Fluminense Darcy Ribeiro (UENF)
Brazil	Marcos	Vital	Universidade Federal de Roraima
Brazil	Haron	Xaud	Embrapa Roraima
Brazil	Katia	Zanini	Universidade Federal do Rio Grande do Sul
Brazil	Charles Eugene	Zartman	Instituto Nacional de Pesquisas Amazônicas
Brunei	Nur Khalish Hafizhah	Ideris	Universiti Brunei Darussalam
Brunei	Faizah binti Hj	Metali	Environmental and Life Sciences, Faculty of Science, Universiti Brunei Darussalam
Brunei	Kamariah	Abu Salim	Environmental and Life Sciences, Faculty of Science, Universiti Brunei Darussalam
Brunei	Muhd Shahrune	Saparudin	Universiti Brunei Darussalam
Brunei	Rafizah Mat	Serudin	Universiti Brunei Darussalam
Brunei	Rahayu	Sukmaria Sukri	Institute for Biodiversity and Environmental Research, Universiti Brunei Darussalam
Cameroon	Serge	Begne	Plant Systematic and Ecology Laboratory, Department of Biology, Higher Teachers' Training College, University of Yaounde I

Cameroon	George	Chuyong	Faculty of Science, Department of Botany and Plant Physiology, University of Buea, Buea, Cameroon
Cameroon	Marie Noel	Djuikouo	Faculty of Science, Department of Plant Science, University of Buea.
Cameroon	Christelle	Gonmadje	National Herbarium, Yaounde
Cameroon	Murielle	Simo-Droissart	Plant Systematics and Ecology Laboratory, Higher Teachers' Training College, University of Yaoundé I
Cameroon	Bonaventure	Sonké	Plant Systematics and Ecology Laboratory, Higher Teachers' Training College, University of Yaoundé I
Cameroon	Hermann	Taedoumg	Department of Plant Biology, Faculty of Sciences, University of Yaounde 1, Cameroon // Bioversity international, Yaoundé-Cameroon
Cameroon	Lise	Zemagho	Plant Systematics and Ecology Laboratory, Higher Teachers' Training College, University of Yaoundé I
Canada	Sean	Thomas	Faculty of Forestry, University of Toronto
Central African Republic	Fidèle	Baya	Ministère des Eaux, Forêts, Chasse et Pêche (MEFCP), Bangui, Central African Republic
Chile	Gustavo	Saiz	Universidad Católica de la Santísima Concepción
Chile	Javier	Silva Espejo	Universidad de La Serena
China	Dexiang	Chen	Research Institute of Tropical Forestry, Chinese Academy of Forestry
China	Alan	Hamilton	Kunming Institute of Botany, Chinese Academy of Sciences
China	Yide	Li	Research Institute of Tropical Forestry, Chinese Academy of Forestry
China	Tushou	Luo	Research Institute of Tropical Forestry, Chinese Academy of Forestry
China	Shukui	Niu	Beijing Forestry University
China	Han	Xu	Research Institute of Tropical Forestry, Chinese Academy of Forestry
China	Zhang	Zhou	Research Institute of Tropical Forestry, Chinese Academy of Forestry
Colombia	Esteban	Álvarez Dávila	UNAD, Corporación COL-TREE
Colombia	Juan Carlos	Andrés Escobar	Corporación COL-TREE
Colombia	Henry	Arellano-Peña	Nuevo Estándar Biotropical NEBIOT SAS
Colombia	Jaime	Cabezas Duarte	Universidad del Tolima
Colombia	Jhon	Calderón	Asociación GAICA, Universidad de Nariño – Red BST-Col
Colombia	Lina Maria	Corrales Bravo	Universidad del Tolima
Colombia	Borish	Cuadrado	Parques Nacionales Naturales, Territorial Caribe – Red BST-Col
Colombia	Hermes	Cuadros	Universidad del Atlántico – Red BST-Col
Colombia	Alvaro	Duque	Departamento de Ciencias Forestales, Universidad Nacional de Colombia - Sede Medellín
Colombia	Luisa Fernanda	Duque	Socioecosistemas y clima sostenible, Fundacion con Vida
Colombia	Sandra Milena	Espinosa	Corporación COL-TREE
Colombia	Rebeca	Franke-Ante	Parques Nacionales Naturales de Colombia – Red BST-Col
Colombia	Hernando	García	Instituto de Investigación de Recursos Biológicos Alexander von Humboldt – Red BST-Col
Colombia	Alejandro	Gómez	UNAL, Colombia
Colombia	Roy	González-M.	Instituto de Investigación Recursos Biologicos Alexander von Humboldt – Red BST-Col
Colombia	Álvaro	Idárraga-Piedrahíta	Fundación Jardín Botánico de Medellín, Herbario “Joaquín Antonio Uribe” (JAUM) – Red BST-Col
Colombia	Eliana	Jimenez	Universidad Nacional de Colombia sede Amazonia
Colombia	Rubén	Jurado	Asociación GAICA, Universidad de Nariño – Red BST-Col
Colombia	Wilmar	López Oviedo	Coltree
Colombia	René	López-Camacho	Facultad del Medio Ambiente y Recursos Naturales, Universidad Distrital Francisco José de Caldas – Red BST-Col
Colombia	Omar Aurelio	Melo Cruz	Universidad de Tolima
Colombia	Irina	Mendoza Polo	Socioecosistemas y clima sostenible, Fundacion con Vida

Colombia	Edwin	Paky	Corporación COL-TREE
Colombia	Karen	Pérez	Fundación Orinoquia Biodiversa – Red BST-Col
Colombia	Angel	Pijachi	Corporación COL-TREE
Colombia	Camila	Pizano	Departamento de Biología, Facultad de Ciencias Naturales, Universidad Icesi – Red BST-Col
Colombia	Adriana	Prieto	Instituto de Ciencias Naturales, Universidad Nacional de Colombia
Colombia	Laura	Ramos	Universidad de los Llanos
Colombia	Zorayda	Restrepo Correa	Servicios Ecosistemicos y Cambio Climatico (SECC) Fundación Con Vida & Corporación COL-TREE
Colombia	James	Richardson	Universidad del Rosario
Colombia	Elkin	Rodríguez	Parques Nacionales Naturales, Territorial Caribe – Red BST-Col
Colombia	Gina M.	Rodríguez M.	Fundacion Ecosistemas Secos de Colombia – Red BST-Col
Colombia	Agustín	Rudas	Instituto de Ciencias Naturales, Universidad Nacional de Colombia
Colombia	Pablo	Stevenson	Universidad de los Andes - ANDES herbarium
Czech Republic	Markéta	Chudomelová	Institute of Botany, Czech Academy of Sciences
Czech Republic	Martin	Dancak	Palacky University
Czech Republic	Radim	Hédl	Institute of Botany, Czech Academy of Sciences
Czech Republic	Stanislav	Lhota	Czech University of Life Sciences, Prague
Czech Republic	Martin	Svatek	Mendel University, Brno
Democratic Republic of Congo	Jacques	Mukinzi	World Wide Fund for Nature
Democratic Republic of Congo	Corneille	Ewango	Wildlife Conservation Society-DR Congo
Democratic Republic of Congo	Terese	Hart	Lukuru Wildlife Research Foundation
Democratic Republic of Congo	Emmanuel	Kasongo Yakusu	Université de Kisangani
Democratic Republic of Congo	Janvier	Lisingo	Faculté des Sciences, Laboratoire d'écologie et aménagement forestier, Université de Kisangani, Kisangani, Democratic Republic of Congo
Democratic Republic of Congo	Jean-Remy	Makana	Wildlife Conservation Society-DR Congo
Democratic Republic of Congo	Faustin	Mbayu	Université de Kisangani Faculté des Sciences Agronomiques République Démocratique du Congo
Democratic Republic of Congo	Benjamin	Toirambe	Ministère de l'Environnement et Développement Durable, Kinshasa, Democratic Republic of Congo
Democratic Republic of Congo	John	Tshibamba Mukendi	Université de Kisangani Faculté des Sciences Agronomiques République Démocratique du Congo
Denmark	Lars	Kvist	Aarhus University
Denmark	Gustav	Nebel	University of Copenhagen
Ecuador	Selene	Báez	Escuela Politécnica Nacional del Ecuador
Ecuador	Carlos	Céron	Herbario Alfredo Paredes (QAP), Universidad Central del Ecuador
Ecuador	Daniel M.	Griffith	Universidad Técnica Particular de Loja
Ecuador	Juan Ernesto	Guevara Andino	Grupo de Investigación en Biodiversidad, Medio Ambiente y Salud-BIOMAS- Universidad de las Américas, Campus Queri, Quito Ecuador; Keller Science Action Center, The Field Museum, 1400 South Lake Shore Dr., Chicago, IL
Ecuador	David	Neill	Universidad Estatal Amazónica, Facultad de Ingeniería Ambiental
Ecuador	Walter	Palacios	Universidad Tecnica del Norte, Herbario Nacional del Ecuador
Ecuador	María Cristina	Peñuela-Mora	Grupo de Ecosistemas Tropicales y Cambio Global, Universidad Regional Amazónica ikiam
Ecuador	Gonzalo	Rivas-Torres	Colegio de Ciencias Biológicas y Ambientales COCIBA & Extensión Galápagos, Universidad San Francisco de Quito-USFQ; Herbario de Botánica Económica del Ecuador QUSF, Universidad San Francisco de Quito USFQ; Galapagos Science Center, USFQ, UNC Chapel Hill, San Cristobal, Galapagos, Ecuador; University of North Carolina-UNC Chapel Hill, USA; University of Florida, Gainesville, USA.

Ecuador	Gorky	Villa	FindingSpecies
Ethiopia	Sheleme	Demissie	Mekelle University
Ethiopia	Tadesse	Gole	independent researcher
Ethiopia	Techane	Gonfa	Environment, Climate Change and Coffee Forest Forum (ECCCF)
Finland	Kalle	Ruokolainen	University of Turku
France	Michel	Baisie	CIRAD
France	Fabrice	Bénédet	Centre de coopération International en Recherche Agronomique pour le Développement (CIRAD)
France	Wemo	Betian	CNRS
France	Vincent	Bezard	ONF
France	Damien	Bonal	INRAE
France	Jerôme	Chave	Centre National de la Recherche Scientifique
France	Vincent	Droissart	AMAP, Univ Montpellier, IRD, CNRS, CIRAD, INRA, Montpellier, France.
France	Sylvie	Gourlet-Fleury	Forêts et Sociétés (F&S), Centre de coopération International en Recherche Agronomique pour le Développement (CIRAD), Montpellier, France
France	Annette	Hladik	Departement Hommes Natures Societes Museum national d'histoire naturelle
France	Nicolas	Labrière	Centre National de la Recherche Scientifique
France	Pétrus	Naisso	Cirad
France	Maxime	Réjou-Méchain	AMAP, Univ Montpellier, IRD, CNRS, CIRAD, INRA, Montpellier, France.
France	Plinio	Sist	Cirad
French Guiana	Lilian	Blanc	CIRAD
French Guiana	Benoit	Burban	INRA Kourou
French Guiana	Géraldine	Derroire	Cirad, UMR Ecologie des Forêts de Guyane (AgroparisTech, CNRS, INRAE, Université des Antilles, Université de la Guyane)
French Guiana	Aurélie	Dourdain	Cirad, UMR Ecologie des Forêts de Guyane (AgroparisTech, CNRS, INRAE, Université des Antilles, Université de la Guyane)
French Guiana	Clement	Stahl	INRAE
Gabon	Natacha Nssi	Bengone	Ministry of Forests, Seas, Environment and Climate
Gabon	Eric	Chezeaux	Rougier-Gabon
Gabon	Fidèle	Evouna Ondo	Agence Nationale des Parcs Nationaux Gabon
Democratic Republic of Congo	Vincent	Medjibe	Commission of Central African Forests (COMIFAC), Libreville
Gabon	Vianet	Mihindou	Agence Nationale des Parcs Nationaux / Ministère des Forêts, des Eaux, de la Mer, de l'Environnement, Chargé du Plan Climat, des Objectifs de Développement Durable et du Plan d'Affectation des Terres
Gabon	Lee	White	Institut de Recherche en Ecologie Tropicale (CENAREST) Gabon/Agence Nationale des Parcs Nationaux
Germany	Heike	Culmsee	Georg-August-University Göttingen
Germany	Cristabel	Durán Rangel	University of Freiburg
Germany	Viviana	Horna	Institute of Botany, University of Hohenheim, 70593 Stuttgart
Germany	Florian	Wittmann	Max Planck Institute for Chemistry
Ghana	Stephen	Adu-Bredu	Forestry Research Institute of Ghana (FORIG)
Ghana	Kofi	Affum-Baffoe	Mensuration Unit, Forestry Commission of Ghana
Ghana	Ernest	Foli	Forestry Research Institute of Ghana (FORIG)
Guinea	Michael	Balinga	Center for International Forestry Research
Guyana	Anand	Roopsind	Iwokrama International Centre for Rainforest Conservation and Development
Guyana	James	Singh	Guyana Forestry Commission
Guyana	Raquel	Thomas	Iwokrama International Centre for Rainforest Conservation and Development
Guyana	Roderick	Zagt	Utrecht University
India	Indu	K Murthy	Centre for Sustainable Technologies, Indian Institute of Science
Indonesia	Kuswata	Kartawinata	CIFOR
Indonesia	Kuswata	Kartawinata	Herbarium Borgoriense, Indonesian Institute of Sciences (LIPI)

Indonesia	Edi	Mirmanto	Indonesian Institute of Science, Bogor, Indonesia
Indonesia	Hari	Priyadi	Centre for International Forestry Research (CIFOR)
Indonesia	Ismayadi	Samsuedin	Forest Research and Development Agency (FORDA)
Indonesia	Terry	Sunderland	Center for International Forestry Research
Indonesia	Ishak	Yassir	Balitek-KSDA Samboja
Italy	Francesco	Rovero	University of Florence and MUSE - Museo delle Scienze
Italy	Barbara	Vinceti	Bioversity International
Ivory Coast	Bruno	Hérault	Cirad
Japan	Shin-Ichiro	Aiba	Hokkaido University
Japan	Kanehiro	Kitayama	Graduate School of Agriculture, Kyoto University
Liberia	Armandu	Daniels	Forestry Development Authority of the Government of Liberia (FDA)
Liberia	Darlington	Tuagben	Forestry Development Authority of the Government of Liberia (FDA)
Liberia	John T.	Woods	University of Liberia
Malaysia	Muhammad	Fitriadi	Sungai Wain Protection Forest
Malaysia	Alexander	Karolus	South East Asia Rainforest Research Partnership, Danum Valley Field Centre, Lahad Datu, Sabah
Malaysia	Kho Lip	Khoon	Malaysian Palm Oil Board
Malaysia	Noreen	Majalap	Sabah Forestry Department, Forest Research Centre, Sandakan, Sabah
Malaysia	Colin	Maycock	Universiti Malaysia Sabah
Malaysia	Reuben	Nilus	Sabah Forestry Department
Malaysia	Sylvester	Tan	Sarawak Forestry Corporation
Mozambique	Almeida	Sitoe	Eduardo Mondlane University
Nicaragua	Indiana	Coronado G.	Herbarium UNAN-Leon, Universidad Nacional Autónoma de Nicaragua
Nigeria	Lucas	Ojo	University of Abeokuta
Norway	Rafael	de Assis	Natural History Museum of Norway
Norway	Axel Dalberg	Poulsen	University of Oslo
Norway	Douglas	Sheil	Norwegian University of Life Sciences
Peru	Karen	Arévalo Pezo	Universidad Nacional de la Amazonía Peruana
Peru	Hans	Buttgenbach Verde	Universidad Nacional Agraria La Molina (UNALM), Peru
Peru	Victor	Chama Moscoso	Jardín Botánico de Missouri
Peru	Jimmy Cesar	Cordova Oroche	Universidad Nacional de la Amazonia Peruana (UNAP)
Peru	Fernando	Cornejo Valverde	Andes to Amazon Biodiversity Program
Peru	Massiel	Corrales Medina	Universidad Nacional de San Agustín de Arequipa
Peru	Nallaret	Davila Cardozo	Facultad de Ciencias Biológicas, Universidad Nacional de la Amazonía Peruana
Peru	Jano	de Rutte Corzo	Kené - Instituto de Estudios Forestales y Ambientales
Peru	Jhon	del Aguila Pasquel	Instituto de Investigaciones de la Amazonia Peruana
Peru	Gerardo	Flores Llampazo	Universidad Nacional Jorge Basadre de Grohmann (UNJBG)
Peru	Luis	Freitas	Instituto de Investigaciones de la Amazonia Peruana (IIAP)
Peru	Darcy	Galiano Cabrera	Universidad Nacional de San Antonio Abad del Cusco
Peru	Roosevelt	García Villacorta	
Peru	Karina	García Cabrera	Universidad Nacional de San Antonio Abad del Cusco
Peru	Diego	García Soria	Instituto de Investigaciones de la Amazonía Peruana
Peru	Leticia	Gatica Saboya	Universidad Nacional de la Amazonia Peruana (UNAP)
Peru	Julio Miguel	Grandez Rios	Universidad Nacional de la Amazonia Peruana (UNAP)
Peru	Gabriel	Hidalgo Pizango	Instituto de Investigaciones de la Amazonia Peruana
Peru	Eurídice	Honorio Coronado	Instituto de Investigaciones de la Amazonía Peruana
Peru	Isau	Huamantupa-Chuquimaco	Universidad Nacional de San Antonio Abad del Cusco

Peru	Walter	Huaraca Huasco	Universidad Nacional de San Antonio Abad del Cusco
Peru	Yuri Tomas	Huilca Aedo	Universidad Nacional de San Antonio Abad del Cusco
Peru	Jose Luis	Marcelo Peña	Universidad Nacional Agraria La Molina
Peru	Abel	Monteagudo Mendoza	Universidad Nacional de San Antonio Abad del Cusco
Peru	Vanesa	Moreano Rodriguez	Universidad Nacional Agraria La Molina (UNALM)
Peru	Percy	Núñez Vargas	Universidad Nacional de San Antonio Abad del Cusco
Peru	Sonia Cesarina	Palacios Ramos	Universidad Nacional Agraria La Molina (UNALM), Peru
Peru	Nadir	Pallqui Camacho	Universidad Nacional de San Antonio Abad del Cusco
Peru	Antonio	Peña Cruz	Jardin Botanico de Missouri
Peru	Freddy	Ramirez Arevalo	Universidad Nacional de la Amazonía Peruana
Peru	José	Reyna Huaymacari	Universidad Nacional de la Amazonía Peruana (UNAP)
Peru	Carlos	Reynel Rodriguez	Universidad Nacional Agraria La Molina (UNALM), Peru
Peru	Marcos Antonio	Ríos Paredes	Universidad Nacional de la Amazonia Peruana
Peru	Lily	Rodriguez Bayona	Centro de Conservación, Investigación y Manejo, CIMA
Peru	Rocio del Pilar	Rojas Gonzales	Jardín Botánico de Missouri
Peru	Maria Elena	Rojas Peña	Universidad Nacional de la Amazonía Peruana (UNAP)
Peru	Norma	Salinas Revilla	Pontificia Universidad Católica del Perú
Peru	Yahn Carlos	Soto Shareva	Jardin Botanico de Missouri, Oxapampa
Peru	Raul	Tupayachi Trujillo	Asociacion Bosques Perú
Peru	Luis	Valenzuela Gamarra	Jardín Botánico de Missouri
Peru	Rodolfo	Vasquez Martinez	Jardín Botánico de Missouri
Peru	Jim	Vega Arenas	Universidad Nacional de la Amazonia Peruana
Republic of Congo	Christian	Amani	Université Officielle de Bukavu, Bukavu, Democratic Republic of Congo
Republic of Congo	Suspense	Averti Ifo	Université Marien N'Gouabi, Brazzaville
Republic of Congo	Yannick	Bocko	Université Marien Ngouabi, Brazzaville
Republic of Congo	Patrick	Boundja	Wildlife Conservation Society
Republic of Congo	Romeo	Ekoungoulou	Ecole Nationale Supérieure d'Agronomie et de Foresterie, Université Marien Ngouabi
Republic of Congo	Mireille	Hockemba	Wildlife Conservation Society
Republic of Congo	Donatien	Nzala	Univeriste Marien Ngouabi
Sierra Leone	Alusine	Fofanah	The Gola Rainforest National Park, Kenema, Sierra Leone
Singapore	David	Taylor	Department of Geography, National University of Singapore
Spain	Luis	Cayuela Delgado	Departamento de Biología, Geología, Física y Química Inorgánica, Universidad Rey Juan Carlos
Spain	Íñigo	Granzow-de la Cerde	Real Jardín Botánico - CSIC
Spain	Manuel	Macía	Departamento de Biología, Área de Botánica, Universidad Autónoma de Madrid
Spain	Juliana	Stropp	Museo Nacional de Ciencias Naturales (MNCN-CSIC)
Suriname	Maureen	Playfair	Centre for Agricultural Research in Suriname (CELOS)
Suriname	Verginia	Wortel	Centre for Agricultural Research in Suriname (CELOS)
Sweden	Toby	Gardner	Stockholm Environment Institute
Sweden	Robert	Muscarella	Department of Plant Ecology and Evolution, Uppsala University
Sweden	Hari	Priyadi	Southern Swedish Forest Research Centre
Switzerland	Ervan	Rutishauser	InfoFlora, Conservatoire et Jardin Botanique Geneve
Taiwan	Kuo-Jung	Chao	National Chung Hsing University
Tanzania	Pantaleo	Munishi	Sokoine University of Agriculture

The Netherlands	Olaf	Bánki	Naturalis Biodiversity Center
The Netherlands	Frans	Bongers	Wageningen University, Forest Ecology and Forest Management Group
The Netherlands	Rene	Boot	Tropenbos International
The Netherlands	Gabriella	Fredriksson	Institute for Biodiversity and Ecosystem Dynamics, University of Amsterdam
The Netherlands	Jan	Reitsma	Bureau Waardenburg BV
The Netherlands	Hans	ter Steege	Naturalis Biodiversity Center
The Netherlands	Tinde	van Andel	Naturalis Biodiversity Center
The Netherlands	Peter	van de Meer	Van Hall Larenstein University of Applied Sciences
The Netherlands	Peter	van der Hout	Van der Hout Forestry Consulting
The Netherlands	Mark	van Nieuwstadt	Utrecht University, Domplein 29, 3512 JE Utrecht
The Netherlands	Bert	van Ulft	PROMAB
The Netherlands	Elmar	Veenendaal	Wageningen University, Plant Ecology and Nature Conservation Group
The Netherlands	Ronald	Vernimmen	Data for Sustainability
The Netherlands	Pieter	Zuidema	Wageningen University, Plant Ecology and Nature Conservation Group
The Netherlands	Joeri	Zwerts	Utrecht University
Uganda	Perpetra	Akite	Department of Zoology, Entomology & Fisheries Sciences, Makerere University, Kampala
Uganda	Robert	Bitariho	The Institute of Tropical Forest Conservation (ITFC), Mbarara University of Science and Technology (MUST), Mbarara, Uganda
Uganda	Colin	Chapman	George Washington University/ Makerere University
Uganda	Eilu	Gerald	Department of Forestry, Biodiversity and Tourism, Makerere University, Kampala
Uganda	Miguel	Leal	Wildlife Conservation Society
Uganda	Patrick	Mucunguzi	Makerere University, Kampala
United Kingdom	Katharine	Abernethy	University of Stirling
United Kingdom	Miguel	Alexiades	University of Kent
United Kingdom	Timothy R.	Baker	School of Geography, University of Leeds
United Kingdom	Karina	Banda	School of Geography, University of Leeds
United Kingdom	Lindsay	Banin	UK Centre of Ecology & Hydrology
United Kingdom	Jos	Barlow	Lancaster University
United Kingdom	Amy	Bennett	School of Geography, University of Leeds
United Kingdom	Erika	Berenguer	Lancaster University, University of Oxford
United Kingdom	Nicholas	Berry	The Landscapes and Livelihoods Group (TLLG)
United Kingdom	Neil M.	Bird	Overseas Development Institute
United Kingdom	George A.	Blackburn	Lancaster University
United Kingdom	Francis	Brearley	Manchester Metropolitan University
United Kingdom	Roel	Brienen	School of Geography, University of Leeds
United Kingdom	David	Burslem	University of Aberdeen
United Kingdom	Lidiany	Carvalho	University of Exeter
United Kingdom	Percival	Cho	Lancaster University
United Kingdom	Fernanda	Coelho	School of Geography, University of Leeds
United Kingdom	Murray	Collins	School of GeoSciences, University of Edinburgh
United Kingdom	David	Coomes	University of Cambridge
United Kingdom	Aida	Cuni-Sanchez	Department of Environment and Geography, University of York
United Kingdom	Greta	Dargie	School of Geography, University of Leeds
United Kingdom	Kyle	Dexter	School of GeoSciences, University of Edinburgh
United Kingdom	Mat	Disney	Department of Geography University College London
United Kingdom	Freddie	Draper	School of Geography, University of Leeds
United Kingdom	Muying	Duan	Imperial College, London
United Kingdom	Adriane	Esquivel-Muelbert	School of Geography, Earth & Environmental Sciences and Birmingham Institute of Forest Research, University of Birmingham
United Kingdom	Robert	Ewers	Imperial College London

United Kingdom	Belen	Fadrique	School of Geography, University of Leeds
United Kingdom	Sophie	Fauset	University of Plymouth
United Kingdom	Ted R.	Feldpausch	Geography, College of Life and Environmental Sciences, University of Exeter
United Kingdom	Filipe	França	Lancaster Environment Centre, Lancaster University
United Kingdom	David	Galbraith	School of Geography, University of Leeds
United Kingdom	Martin	Gilpin	School of Geography, University of Leeds
United Kingdom	Emanuel	Gloor	School of Geography, University of Leeds
United Kingdom	John	Grace	University of Edinburgh
United Kingdom	Keith	Hamer	School of Biology, University of Leeds
United Kingdom	David	Harris	Royal Botanic Garden Edinburgh
United Kingdom	Kath	Jeffery	CENAREST & ANPN & Stirling University
United Kingdom	Tommaso	Jucker	University of Bristol, School of Biological Sciences
United Kingdom	Michelle	Kalamandeen	School of Geography, University of Leeds; Department of Plant Sciences, University of Cambridge and Living with Lake Centre, Laurentian University
United Kingdom	Bente	Klitgaard	Royal Botanic Gardens Kew
United Kingdom	Aurora	Levesley	School of Geography, University of Leeds
United Kingdom	Simon L.	Lewis	School of Geography, University of Leeds
United Kingdom	Jeremy	Lindsell	The Royal Society for the Protection of Birds, Centre for Conservation Science, Sandy, UK
United Kingdom	Gabriela	Lopez-Gonzalez	School of Geography, University of Leeds
United Kingdom	Jon	Lovett	School of Geography, University of Leeds & Royal Botanic Gardens, Kew
United Kingdom	Yadvinder	Malhi	Environmental Change Institute, School of Geography and the Environment, University of Oxford
United Kingdom	Toby	Marthews	UK Centre for Ecology & Hydrology
United Kingdom	Emma	McIntosh	School of Geography and the Environment, University of Oxford
United Kingdom	Karina	Melgaço	School of Geography, University of Leeds
United Kingdom	William	Milliken	The Royal Botanic Gardens
United Kingdom	Edward	Mitchard	School of GeoSciences, University of Edinburgh
United Kingdom	Peter	Moonlight	Royal Botanic Garden Edinburgh
United Kingdom	Sam	Moore	School of Geography and the Environment, University of Oxford
United Kingdom	Alexandra	Morel	Department of Geography and Environmental Science, University of Dundee
United Kingdom	Julie	Peacock	School of Geography, University of Leeds
United Kingdom	Kelvin	Peh	School of Biological Sciences, University of Southampton
United Kingdom	Colin	Pendry	Royal Botanical Garden Edinburgh
United Kingdom	R. Toby	Pennington	University of Exeter; Royal Botanic Garden Edinburgh
United Kingdom	Luciana de Oliveira	Pereira	University of Exeter
United Kingdom	Carlos	Peres	University of East Anglia
United Kingdom	Oliver L.	Phillips	School of Geography, University of Leeds
United Kingdom	Georgia	Pickavance	School of Geography, University of Leeds
United Kingdom	Thomas	Pugh	School of Geography, Earth & Environmental Sciences and Birmingham Institute of Forest Research, University of Birmingham
United Kingdom	Lan	Qie	School of Geography, University of Leeds
United Kingdom	Terhi	Riutta	University of Oxford
United Kingdom	Katherine	Roucoux	Stirling University
United Kingdom	Casey	Ryan	University of Edinburgh
United Kingdom	Tiina	Sarkinen	Royal Botanical Gardens Edinburgh
United Kingdom	Camila	Silva Valeria	Lancaster University
United Kingdom	Dominick	Spracklen	School of Earth and Environment, University of Leeds
United Kingdom	Suzanne	Stas	School of Earth and Environment, University of Leeds
United Kingdom	Martin	Sullivan	School of Geography, University of Leeds

United Kingdom	Michael	Swaine	Department of Plant & Soil Science, Cruickshank Building, School of Biological Sciences, University of Aberdeen
United Kingdom	Joey	Talbot	School of Geography, University of Leeds and Institute for Transport Studies, University of Leeds
United Kingdom	James	Taplin	UK Research & Innovation
United Kingdom	Geertje	van der Heijden	University of Nottingham
United Kingdom	Laura	Vedovato	University of Exeter
United Kingdom	Simon	Willcock	University of Bangor
United Kingdom	Mathew	Williams	University of Edinburgh
USA	Luciana	Alves	Center for Tropical Research, Institute of the Environment and Sustainability, University of California, Los Angeles
USA	Patricia	Alvarez Loayza	Center for Tropical Conservation, Nicholas School of the Environment, Duke University
USA	Gabriel	Arellano	Ecology and Evolutionary Biology, University of Michigan
USA	Cheryl	Asa	Saint Louis Zoo
USA	Peter	Ashton	Department of Organismic and Evolutionary Biology, Harvard University
USA	Gregory	Asner	Center for Global Discovery and Conservation Science, Arizona State University
USA	Terry	Brncic	Wildlife Conservation Society – Programme Congo
USA	Foster	Brown	Woods Hole Research Center
USA	Robyn	Burnham	The University of Michigan Herbarium
USA	Connie	Clark	Nicholas School of the Environment
USA	James	Comiskey	National Park Service
USA	Gabriel	Damasco	University of California
USA	Stuart	Davies	ForestGEO, Smithsonian Tropical Research Institute
USA	Tony	Di Fiore	University of Texas at Austin
USA	Terry	Erwin	Smithsonian Institute
USA	William	Farfan-Rios	Washington University in Saint Louis; Center for Conservation and Sustainable Development at the Missouri Botanical Garden
USA	Jefferson	Hall	Smithsonian Tropical Research Institute, Smithsonian Institution Forest Global Earth Observatory (ForestGEO)
USA	David	Kenfack	Forest Global Earth Observatory (ForestGEO), Smithsonian Tropical Research Institute, Washington, DC, USA
USA	Thomas	Lovejoy	George Mason University, Virginia
USA	Roberta	Martin	Center for Global Discovery and Conservation Science, Arizona State University
USA	Olga Martha	Montiel	Missouri Botanical Garden
USA	John	Pipoly	Broward County Parks and Recreation
USA	John	Pipoly	Nova Southeastern University
USA	Nigel	Pitman	Science and Education, The Field Museum
USA	John	Poulsen	Nicholas School of the Environment
USA	Richard	Primack	Department of Biology, Boston University
USA	Miles	Silman	Wake Forest University
USA	Marc	Steininger	Department of Geographical Sciences, University of Maryland, College Park, MD
USA	Varun	Swamy	San Diego Zoo Institute for Conservation Research
USA	John	Terborgh	Center for Tropical Conservation, Nicholas School of the Environment, Duke University
USA	Duncan	Thomas	Biology Department, Washington State University, Vancouver, WA, USA
USA	Peter	Umunay	Yale School of Forestry & Environmental Studies
USA	Maria	Uriarte	Columbia University
USA	Emilio	Vilanova Torre	Department of Environmental Science, Policy, and Management, University of California, Berkeley.
USA	Ophelia	Wang	School of Earth Sciences and Environmental Sustainability, Northern Arizona University
USA	Kenneth	Young	Department of Geography and the Environment University of Texas at Austin

Venezuela	Gerardo A.	Aymard C.	UNELLEZ-Guanare, Programa de Ciencias del Agro y el Mar, Herbario Universitario (PORT); Ci Progress GreenLife,
Venezuela	Lionel	Hernández	Universidad Nacional Experimental de Guayana
Venezuela	Rafael	Herrera Fernández	Instituto Venezolano de Investigaciones Científicas (IVIC)
Venezuela	Hirma	Ramírez-Angulo	Universidad de los Andes
Venezuela	Pedro	Salcedo	Universidad de los Andes
Venezuela	Elio	Sanoja	Universidad Nacional Experimental de Guayana
Venezuela	Julio	Serrano	Universidad de Los Andes
Venezuela	Armando	Torres-Lezama	Universidad de los Andes Merida
Viet Nam	Tinh Cong	Le	Viet Nature Conservation Centre
Viet Nam	Trai Trong	Le	Viet Nature Conservation Centre
Viet Nam	Hieu Dang	Tran	Viet Nature Conservation Centre