



This is a repository copy of *Occupational bladder cancer: a cross section survey of previous employments, tasks and exposures matched to cancer phenotypes.*

White Rose Research Online URL for this paper:  
<http://eprints.whiterose.ac.uk/166437/>

Version: Published Version

---

**Article:**

Reed, O., Jubber, I., Griffin, J. et al. (5 more authors) (2020) Occupational bladder cancer: a cross section survey of previous employments, tasks and exposures matched to cancer phenotypes. PLoS ONE, 15 (10). e0239338. ISSN 1932-6203

<https://doi.org/10.1371/journal.pone.0239338>

---

**Reuse**

This article is distributed under the terms of the Creative Commons Attribution (CC BY) licence. This licence allows you to distribute, remix, tweak, and build upon the work, even commercially, as long as you credit the authors for the original work. More information and the full terms of the licence here:  
<https://creativecommons.org/licenses/>

**Takedown**

If you consider content in White Rose Research Online to be in breach of UK law, please notify us by emailing [eprints@whiterose.ac.uk](mailto:eprints@whiterose.ac.uk) including the URL of the record and the reason for the withdrawal request.



[eprints@whiterose.ac.uk](mailto:eprints@whiterose.ac.uk)  
<https://eprints.whiterose.ac.uk/>

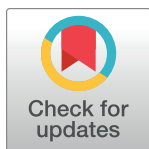
## RESEARCH ARTICLE

## Occupational bladder cancer: A cross section survey of previous employments, tasks and exposures matched to cancer phenotypes

Oliver Reed<sup>1</sup>, Ibrahim Jubber<sup>1</sup>, Jon Griffin<sup>2</sup>, Aidan P. Noon<sup>3</sup>, Louise Goodwin<sup>1</sup>, Syed Hussain<sup>4</sup>, Marcus G. Cumberbatch<sup>1,5‡</sup>, James W.F. Catto<sup>1,3‡\*</sup>

**1** Academic Urology Unit, University of Sheffield, Sheffield, United Kingdom, **2** Department of Pathology, Sheffield Teaching Hospitals NHS Trust, Sheffield, United Kingdom, **3** Department of Urology, Sheffield Teaching Hospitals NHS Trust, Sheffield, United Kingdom, **4** Academic Oncology Unit, Western Park, University of Sheffield, Sheffield, United Kingdom, **5** Peter MacCallum Cancer Centre, Melbourne, Australia

‡ These authors share last authorship on this work.

\* [j.catto@sheffield.ac.uk](mailto:j.catto@sheffield.ac.uk)

## OPEN ACCESS

**Citation:** Reed O, Jubber I, Griffin J, Noon AP, Goodwin L, Hussain S, et al. (2020) Occupational bladder cancer: A cross section survey of previous employments, tasks and exposures matched to cancer phenotypes. PLoS ONE 15(10): e0239338. <https://doi.org/10.1371/journal.pone.0239338>

**Editor:** Amitava Mukherjee, VIT University, INDIA

**Received:** April 13, 2020

**Accepted:** September 3, 2020

**Published:** October 21, 2020

**Peer Review History:** PLOS recognizes the benefits of transparency in the peer review process; therefore, we enable the publication of all of the content of peer review and author responses alongside final, published articles. The editorial history of this article is available here: <https://doi.org/10.1371/journal.pone.0239338>

**Copyright:** © 2020 Reed et al. This is an open access article distributed under the terms of the [Creative Commons Attribution License](https://creativecommons.org/licenses/by/4.0/), which permits unrestricted use, distribution, and reproduction in any medium, provided the original author and source are credited.

**Data Availability Statement:** We are unable to release the full data set because it contains information that would allow individuals to be identified. Specifically, the granularity of detail is such that persons could cross gender, age,

## Abstract

## Objectives

Up to 10% of Bladder Cancers may arise following occupational exposure to carcinogens. We hypothesised that different cancer phenotypes reflected different patterns of occupational exposure.

## Methods

Consecutive participants, with bladder cancer, self-completed a structured questionnaire detailing employment, tasks, exposures, smoking, lifestyle and family history. Our primary outcome was association between cancer phenotype and occupational details.

## Results

We collected questionnaires from 536 patients, of whom 454 (85%) participants (352 men and 102 women) were included. Women were less likely to be smokers (68% vs. 81% Chi sq.  $p < 0.001$ ), but more likely than men to inhale environmental tobacco smoke at home (82% vs. 74%  $p = 0.08$ ) and use hair dye (56% vs. 3%,  $p < 0.001$ ). Contact with potential carcinogens occurred in 282 (62%) participants (mean 3.1 per worker (range 0–14)). High-grade cancer was more common than low-grade disease in workers from the steel, foundry, metal, engineering and transport industries ( $p < 0.05$ ), and in workers exposed to crack detection dyes, chromium, coal/oil/gas by-products, diesel fumes/fuel/aircraft fuel and solvents (such as trichloroethylene). Higher staged cancers were frequent in workers exposed to Chromium, coal products and diesel exhaust fumes/fuel ( $p < 0.05$ ). Various workers (e.g. exposed to diesel fuels or fumes (Cox, HR 1.97 (95% CI 1.31–2.98)  $p = 0.001$ ), employed in a garage (HR 2.19 (95% CI 1.31–3.63)  $p = 0.001$ ), undertaking plumbing/gas fitting/ventilation (HR 2.15 (95% CI 1.15–4.01)  $p = 0.017$ ), undertaking welding (HR 1.85 (95% CI 1.24–2.77)  $p = 0.003$ ) and exposed to welding materials (HR 1.92 (95% CI 1.27–2.91)  $p = 0.002$ )) were more likely to

regional residence and occupational combinations to identify specific individuals with bladder cancer and their family history. Data access queries may be directed to Sarah Bottomley (contact via [s.e.bottomley@sheffield.ac.uk](mailto:s.e.bottomley@sheffield.ac.uk)).

**Funding:** JWFC received project grant awards to perform this work from Yorkshire Cancer Research ([yorkshirecancerresearch.org.uk](http://yorkshirecancerresearch.org.uk), Numbers S310: Epigenetic carcinogenesis in the urothelium; development of a model system and examination of candidate occupational carcinogens and S385: The Yorkshire Cancer Research Bladder Cancer Patient Reported Outcomes Survey). The funders had no role in design and conduct of the study; collection, management, analysis, and interpretation of the data; preparation, review, or approval of the manuscript; and decision to submit the manuscript for publication.

**Competing interests:** The authors have read the journal's policy and have the following potential competing interests: SH has received research funding from CR UK, MRC/NIHR, UHB charities, CCC charities, North West Cancer Research and reimbursement for consultancy from Bayer, Janssen, Boehringer Ingelheim, Pierre Fabre, Eli Lilly. SAH Advisory board/Consultancy: Roche, MSD, AstraZeneca, BMS, Janssen, Pfizer, Astellas, Bayer, Pierre Fabre, Sotio, GSK, Ipsen and Eisai. JWFC has received reimbursement for consultancy from Astra Zeneca, Roche and Janssen, speaker fees from BMS, MSD, Nucleix and Roche, and honoraria for membership of an advisory board for Ferring. This does not alter our adherence to PLOS ONE policies on sharing data and materials. There are no patents, products in development or marketed products associated with this research to declare.

have disease progression and receive radical treatment than others. Fewer than expected deaths were seen in healthcare workers (HR 0.17 (95% CI 0.04–0.70)  $p = 0.014$ ).

## Conclusions

We identified multiple occupational tasks and contacts associated with bladder cancer. There were some associations with phenotype, although our study design precludes robust assessment.

## Introduction

Bladder cancer (BC) is a common human malignancy and one of the most expensive to manage [1]. Most tumours present with haematuria [2] and at diagnosis around 30% are muscle invasive and 70% non-muscle invasive cancers (NMI) [3]. NMI tumours are stratified into low and high grade lesions, to reflect different treatments and outcomes [4]. The majority of BCs are urothelial cell carcinoma (UCC) in histological sub-type and arise following exposure to carcinogens excreted in the urine [5]. The most common bladder carcinogens are found through tobacco smoke [6] or occupation task [7,8]. Risk from smoking varies with gender, duration, tobacco type and mode of inhalation [9,10]. These aetiological factors mean that BCs are most common in older patients, in men and in the Western World [1]. An individual's risk of BC reflects their carcinogen burden and their ability to metabolise pro-carcinogens [11].

Around 10% of BCs arise following occupational exposure to carcinogens [12]. These carcinogens may be broadly classified into *aromatic amines*, *polycyclic aromatic hydrocarbons* (PAHs), *heavy metals* or *mixed compounds* [7]. The occupational exposure of workers to many carcinogens has been limited by health and safety regulations [such as the European Union directives (e.g. 90/394/EEC and 98/24/EC) and the 2002 Control of Substances Hazardous to Health Regulations in the UK] and changes in manufacturing. Whilst many high risk urothelial carcinogens have been identified, it is suspected that more are still in use. The uncertainty about and identification of further candidates reflects the long latency between exposure and cancer, variations in an individual's risk, that many workers also smoke, and that many potential carcinogens are in widespread (such as diesel fumes) or occult use [13].

BC arises in at least two distinct phenotypes, reflecting genomic events [14,15]. Low-grade tumours are characterised by papillary growth patterns, few genetic alterations (e.g. FGFR3 or hTERT mutation) and an indolent behaviour [16]. In contrast, high-grade BC is an aggressive disease with genetic and epigenetic instability [17], and multiple mutations [18]. We hypothesised that the BC phenotypes could reflect different carcinogenic exposures and, in turn, occupational tasks. We explored this hypothesis using a large Scandinavian dataset and found various occupations with different risks for localised and invasive BCs, and higher rates of BC mortality in the building sector [19]. However, this dataset lacked granularity of occupational tasks, personal smoking exposure and classified BC by stage not grade of differentiation.

To build upon our prior work, we undertook a prospective detailed occupation survey using a consecutive cohort of patients arising in a region of high BC risk. We annotated patients with detailed histological and outcome data.

## Materials and methods

### Patients and occupational questionnaire

Consecutive patients with a new diagnosis of BC treated at the Royal Hallamshire Hospital, Sheffield (RHH), were enrolled from February 2010 to July 2012. RHH is the sole urological

service in Sheffield (population 600,000) and the cancer center for South Yorkshire, UK (population 1.9 million). Participants self-completed a structured questionnaire containing questions on employment history, occupational tasks (nature and frequency) and exposures [S1 Fig] over their whole lifetime. The questionnaire was designed in collaboration with Sheffield Occupational Health Advisory Service (SOHAS) after systematic review [7,8] and included sections for smoking (direct and passive environmental tobacco smoke (ETS)) [9] hobbies linked to BC [20,21], lifestyle and family cancer history. Patients with non-urothelial BC (e.g. squamous cell or adenocarcinoma) were excluded due to different causative associations. Paper questionnaires were completed at home and returned using a stamp addressed envelope, before uploading to a prospective database. All patients gave informed consent in an ethically approved programme (South Yorkshire Research Ethics Committee approval number 10/H1310/73) agreed by Sheffield Teaching Hospital review board. Occupational classes were assigned using NYK and ISCO-1958 codes (as detailed in [7]). In persons with multiple occupations or those with short duration we selected the 3 occupations of longest duration and a minimum period of 1 year as previously validated [19]. No formal power calculation was performed. This study was an explorative cohort study and so we included all eligible patients in the recruiting time frame and aimed to describe data (to allow future studies to be powered accordingly).

### Pathological and clinical outcomes

Tumours were classified by specialist uropathologists using the 1973 WHO and TNM criteria [22]. In participants with multiple BCs, we analysed outcomes with respect to the primary BC. Patients were treated according to local network (<http://www.northtrentcancernetwork.nhs.uk/urology.htm>) and international guidelines [3]. Outcome data were collected between August and October 2018 using hospital databases [namely Integrated Clinical Environment (ICE), Lorenzo and EDMS software]. We measured tumour behaviour with respect to time following initial treatment and defined recurrence as a subsequent NMI cancer following a similar tumour and progression as an increase in pathological stage. Radical treatment was measured to the date of Radical Surgery or starting Radical radiotherapy. Date of death was defined using death certification.

### Statistical analysis

Our primary outcome was the association between BC phenotype (measured as Grade and Stage) and occupational sector, task and exposures. Secondary outcomes were occupational associations with local recurrence, disease progression, radical treatment and mortality. Data were analysed according to participant self-reported questionnaires. Data cleaning clarified missing or unclear parameters, but did not alter returns. Comparisons between occupational exposures and patient/tumour features were performed using Chi-squared tests for categorical and Students T or Mann Whitney U tests for continuous data. Correlation was determined using Pearson's coefficient. Survival was plotted against time using the Kaplan-Meier method and compared using Cox regression analysis. Patients were censored at last follow up or death. All analysis was performed in SPSS software (version 24.0, SPSS Corp). Statistical tests were two-tailed and significance defined as  $p < 0.05$ .

### Patient and public involvement

The idea for this project arose following discussions with Simon Pickvance, Sheffield Occupational Health Advisory Service (SOHAS) and local patients. SOHAS works with employees affected by occupational health problems and with employers to improve occupational

hygiene. We had observed patients with BC and unusual employment tasks (such as the use of crack detection dyes [13]) or high levels of exposure to heavy metals (in soldering or welding tasks). The occupational questionnaire was designed with SOHAS and refined over several iterations using small patient groups.

## Results

### Patients and tumours

We collected questionnaires from 536 patients, of whom 82 (15%) were excluded as they had either non-urothelial BCs, non-primary BCs, missing follow up (e.g. in another hospital) or histopathological details were incomplete. We had sufficient data on 454 (85%) participants (Table 1), including 352 (78%) men and 102 women (22%). In total, 25% had a first degree relative with cancer and 355 (78%) participants were smokers (including 118 smoking at BC diagnosis). Women were less likely to be smokers (68% vs. 81% Chi sq.  $p < 0.001$ ), but more likely to inhale ETS at home (82% vs. 74%  $p = 0.08$ ) and use hair dye (56%,  $p < 0.001$ ) than men. Hobbies varied considerably between the sexes, with more men undertaking fishing and model building (Chi sq.  $p < 0.001$ ). BCs were distributed evenly between low (140 (31%)), moderate (140 (31%)) and high grade (174, 38%) lesions. With regards to stage, most cancers were NMI (368 (88%)) at diagnosis, including 191 (42%) that were high risk (either pTis, pT1 or Grade 3 pTa). Following treatment, recurrence was seen in 244/447 (56%), progression in 114/448 (25%), radical treatment in 156/450 (35%) and death in 157/451 (35%) participants at median of 101 months (interquartile range 73–128).

### Employers and occupational class

Individual employers were documented in 393 (87%) participants, including an average of 3.2 (St dev.  $\pm 2.7$ ) each for men and 2.3 ( $\pm 2.1$ ) for women (T Test  $p = 0.003$ ). There were considerable differences in employment class between men and women (Table 2). The most common male occupations were in engineering, steel and metal working sectors (40%). Women most commonly worked in the service industries (25%). High grade BC was more common than low grade BC in workers from the steel, foundry, metal, engineering and transport industries (Table 2,  $p < 0.05$ ). With regards to stage, engineering and metal workers had higher than expected risks of high-risk NMIs BCs (pTis and pT1, chi sq.  $p = 0.02$ ).

### Substance exposures

Contact with potential or confirmed bladder carcinogens was reported by 282 (62%) participants (mean 3.1 per worker (range 0–14), Table 3). There were marked differences between the genders reflecting employment patterns. The most common contacts were diesel fumes/fuel ( $n = 176$  (39%)), coal/oil/gas by-products (151 (33%)), solvents (125 (28%)), heavy metals (50 (11%)), coking plant fumes (40 (9%)) and crack detection dyes (31 (7%)). Relatively few participants were exposed to more typical urothelial carcinogens such as textile dyes (28 (6%)), printing inks (30 (7%)), 4-aminobiphenyl/MOCA/DDM/MDA/o-toluidine (4 (1%)) reflecting the manufacturing sectors in Yorkshire. Participants often had contact with multiple, similar substances (e.g. diesel fumes (21%) and diesel fuel (18%, Pearson's correlation  $r = 0.80$ ,  $p < 0.001$ ), Cadmium (4%) and Chromium (8%, Pearson's correlation  $r = 0.47$ ,  $p < 0.001$ )). High grade BC was more common than low grade cancer in workers exposed to crack detection dyes, chromium, coal/oil/gas by-products, diesel fumes/fuel/aircraft fuel and solvents (such as trichloroethylene). Higher staged cancers were more frequent than expected in workers exposed to Chromium, coal products and diesel exhaust fumes/fuel ( $p \leq 0.05$ ).

Table 1. Patients and tumours in this report.

		Male		Female		Total		Chi Sq. P
Age at diagnosis (Mean ± St dev)		67.0 ± 9.3		66.4 ± 11.3				T Test p = 0.58
First degree relative with cancer	0	264	75%	78	77%	342	75%	
	1	64	18%	15	15%	79	17%	
	2	19	5%	7	7%	26	6%	
	3 or more	5	1%	2	2%	7	2%	0.843
Smoking history	Non-smoker	66	19%	33	32%	99	22%	
	Smoker	286	81%	69	68%	355	78%	<b>0.003</b>
Years smoking (Mean ± St dev)		36.7 ± 17.8		34.7 ± 18.2				T Test p = 0.39
Pack years (Mean ± St dev)		35.3 ± 27.4		25.8 ± 20.0				T Test p = <b>0.008</b>
ETS at home	Yes	260	74%	84	82%	344	76%	
	No	92	26%	18	18%	110	24%	0.078
ETS at work	Yes	281	80%	70	69%	351	77%	
	No	71	20%	32	31%	103	23%	<b>0.017</b>
Fishing	Yes	100	28%	7	7%	107	24%	
	No	252	72%	95	93%	347	76%	< <b>0.001</b>
Swimming	Yes	104	30%	36	35%	140	31%	
	No	248	71%	66	65%	314	69%	0.270
Model building	Yes	53	15%	1	1%	54	12%	
	No	299	85%	101	99%	400	88%	< <b>0.001</b>
Hair dye use	Yes	10	3%	57	56%	67	15%	
	No	342	97%	45	44%	387	85%	< <b>0.001</b>
Phenacetin	Yes	9	3%	3	3%	12	3%	
	No	343	97%	99	97%	442	97%	0.830
Coal tar creams	Yes	16	5%	3	3%	19	4%	
	No	336	96%	99	97%	435	96%	0.480
UCC Grade	1	88	25%	52	51%	140	31%	
	2	115	33%	25	25%	140	31%	
	3	149	42%	25	25%	174	38%	<b>0.020</b>
Presence of CIS	Yes	46	13%	4	4%	50	11%	
	No	305	87%	98	96%	403	89%	< <b>0.001</b>
UCC Stage	pTa	216	62%	77	76%	293	65%	
	pTis	15	4%	0	0%	15	3%	
	pT1	75	21%	13	13%	88	20%	
	pT2-4	44	13%	12	12%	56	12%	<b>0.020</b>
	Total	352	78%	102	22%	454	100%	

<https://doi.org/10.1371/journal.pone.0239338.t001>

## Occupational task

We questioned participants about their direct involvement or close proximity to ('nearby') 33 tasks thought to potentially reflect exposure to urothelial carcinogens (Table 4). Tasks were selected from SOHAS prior occupational cancer episodes. In total, 1,370 tasks were identified by 210 participants. The commonest tasks were welding (n = 115 (25%)), making cement (94 (21%)), using lubricating/coolant oils (97 (21%)), soldering/brazing (93 (20%)), degreasing (90 (20%)) or involved inhaling fumes from quenching/forging or cooling (174 (38%)). As with substance exposures and occupational class, there were differences in tasks between the sexes and the associated BCs. Cancers of higher than expected grades were seen with welding, the use of mineral oil lubricants, the use of protective resins and with tasks that included diesel

Table 2. Occupational class compared to patient sex and tumour phenotype.

	Gender			Grade				Stage				
	Male	Female	Chi sq P	1	2	3	Chi sq P	Ta	Tis	T1	T2-4	Chi sq P
Coke, coal, power generation	60 (100%)	0 (0%)	<0.001	13 (21.6%)	21 (35%)	26 (43.3%)	0.25	34 (57.6%)	2 (3.3%)	13 (22%)	10 (16.9%)	0.58
Coking plant or gas production	34 (100%)	0 (0%)		6 (17.6%)	12 (35.2%)	16 (47%)		21 (63.6%)	2 (6%)	6 (18.1%)	4 (12.1%)	
Coal mining/smokeless fuel making	37 (100%)	0 (0%)		9 (24.3%)	11 (29.7%)	17 (45.9%)		20 (54%)	1 (2.7%)	9 (24.3%)	7 (18.9%)	
Nuclear power	7 (100%)	0 (0%)		2 (28.5%)	1 (14.2%)	4 (57.1%)		4 (57.1%)	0 (0%)	1 (14.2%)	2 (28.5%)	
Steel and foundry	139 (92.6%)	11 (7.3%)	<0.001	36 (23.6%)	54 (35.5%)	62 (40.7%)	0.05	90 (59.6%)	8 (5.2%)	35 (23.1%)	18 (11.9%)	0.15
Metal refining	26 (100%)	0 (0%)		4 (15.3%)	9 (34.6%)	13 (50%)		15 (57.6%)	2 (7.6%)	6 (23%)	3 (11.5%)	
Steel industry	100 (93.4%)	7 (6.5%)		27 (24.7%)	35 (32.1%)	47 (43.1%)		59 (54.6%)	7 (6.4%)	27 (25%)	15 (13.8%)	
Steel production	62 (93.9%)	4 (6%)		18 (27.2%)	18 (27.2%)	30 (45.4%)		41 (62.1%)	4 (6%)	12 (18.1%)	9 (13.6%)	
Heat treatment	50 (94.3%)	3 (5.6%)		15 (28.3%)	13 (24.5%)	25 (47.1%)		33 (62.2%)	4 (7.5%)	11 (20.7%)	5 (9.4%)	
Forging	39 (95.1%)	2 (4.8%)		12 (29.2%)	11 (26.8%)	18 (43.9%)		24 (58.5%)	3 (7.3%)	9 (21.9%)	5 (12.1%)	
Foundries	53 (98.1%)	1 (1.8%)		12 (21.8%)	19 (34.5%)	24 (43.6%)		31 (56.3%)	3 (5.4%)	14 (25.4%)	7 (12.7%)	
Engineering and metals	140 (90.3%)	15 (9.6%)	<0.001	37 (23.4%)	51 (32.2%)	70 (44.3%)	0.03	92 (58.5%)	9 (5.7%)	39 (24.8%)	17 (10.8%)	0.02
Engineering	84 (91.3%)	8 (8.6%)		22 (23.1%)	36 (37.8%)	37 (38.9%)		55 (58.5%)	5 (5.3%)	21 (22.3%)	13 (13.8%)	
Electroplating	8 (88.8%)	1 (11.1%)		2 (22.2%)	1 (11.1%)	6 (66.6%)		6 (66.6%)	1 (11.1%)	2 (22.2%)	0 (0%)	
Cutlery	25 (75.7%)	8 (24.2%)		9 (27.2%)	7 (21.2%)	17 (51.5%)		22 (66.6%)	0 (0%)	9 (27.2%)	2 (6%)	
Welding	54 (100%)	0 (0%)		5 (8.9%)	23 (41%)	28 (50%)		28 (50%)	6 (10.7%)	17 (30.3%)	5 (8.9%)	
Making electrical contacts/solder	27 (93.1%)	2 (6.8%)		11 (37.9%)	8 (27.5%)	10 (34.4%)		22 (75.8%)	1 (3.4%)	3 (10.3%)	3 (10.3%)	
Soldering	48 (92.3%)	4 (7.6%)		16 (30.1%)	18 (33.9%)	19 (35.8%)		31 (58.4%)	2 (3.7%)	13 (24.5%)	7 (13.2%)	
Other manufacturing	70 (89.7%)	8 (10.2%)	0.01	21 (26.9%)	19 (24.3%)	38 (48.7%)	0.11	45 (57.6%)	4 (5.1%)	18 (23%)	11 (14.1%)	0.46
Refining and recycling	7 (100%)	0 (0%)		2 (28.5%)	0 (0%)	5 (71.4%)		5 (71.4%)	1 (14.2%)	0 (0%)	1 (14.2%)	
Making garments & textiles	3 (33.3%)	6 (66.6%)		4 (44.4%)	1 (11.1%)	4 (44.4%)		5 (55.5%)	0 (0%)	3 (33.3%)	1 (11.1%)	
Spinning synthetic fibre	1 (50%)	1 (50%)		1 (50%)	0 (0%)	1 (50%)		1 (50%)	0 (0%)	1 (50%)	0 (0%)	
Plastic production	17 (100%)	0 (0%)		4 (23.5%)	5 (29.4%)	8 (47%)		10 (58.8%)	1 (5.8%)	4 (23.5%)	2 (11.7%)	
Cement products	30 (100%)	0 (0%)		7 (23.3%)	9 (30%)	14 (46.6%)		17 (56.6%)	1 (3.3%)	9 (30%)	3 (10%)	
Rubber tyre industry	7 (100%)	0 (0%)		1 (14.2%)	2 (28.5%)	4 (57.1%)		6 (85.7%)	0 (0%)	0 (0%)	1 (14.2%)	
Chemical industry	17 (100%)	0 (0%)		1 (5.8%)	5 (29.4%)	11 (64.7%)		10 (58.8%)	2 (11.7%)	1 (5.8%)	4 (23.5%)	
Petroleum industry	8 (80%)	2 (20%)		3 (30%)	0 (0%)	7 (70%)		5 (50%)	1 (10%)	2 (20%)	2 (20%)	
Services	16 (38%)	26 (61.9%)	<0.001	19 (45.2%)	11 (26.1%)	12 (28.5%)	0.11	31 (73.8%)	0 (0%)	6 (14.2%)	5 (11.9%)	0.43

(Continued)

Table 2. (Continued)

Laundries	6 (54.5%)	5 (45.4%)		4 (36.3%)	3 (27.2%)	4 (36.3%)		8 (72.7%)	0 (0%)	2 (18.1%)	1 (9%)	
Hairdressing	2 (22.2%)	7 (77.7%)		5 (55.5%)	4 (44.4%)	0 (0%)		8 (88.8%)	0 (0%)	1 (11.1%)	0 (0%)	
Health care	11 (39.2%)	17 (60.7%)		13 (46.4%)	6 (21.4%)	9 (32.1%)		20 (71.4%)	0 (0%)	4 (14.2%)	4 (14.2%)	
Farming, gardening	25 (86.2%)	4 (13.7%)	0.25	12 (40%)	7 (23.3%)	11 (36.6%)	0.49	20 (66.6%)	0 (0%)	8 (26.6%)	2 (6.6%)	0.43
Agriculture	18 (94.7%)	1 (5.2%)		7 (36.8%)	4 (21%)	8 (42.1%)		12 (63.1%)	0 (0%)	6 (31.5%)	1 (5.2%)	
Horticulture	15 (83.3%)	3 (16.6%)		9 (47.3%)	6 (31.5%)	4 (21%)		15 (78.9%)	0 (0%)	3 (15.7%)	1 (5.2%)	
Building trade	84 (97.6%)	2 (2.3%)	<0.001	23 (26.4%)	30 (34.4%)	34 (39%)	0.54	56 (65.1%)	3 (3.4%)	21 (24.4%)	6 (6.9%)	0.29
Construction	63 (98.4%)	1 (1.5%)		16 (25%)	21 (32.8%)	27 (42.1%)		42 (66.6%)	2 (3.1%)	14 (22.2%)	5 (7.9%)	
Painting	36 (97.2%)	1 (2.7%)		9 (23.6%)	16 (42.1%)	13 (34.2%)		23 (60.5%)	1 (2.6%)	12 (31.5%)	2 (5.2%)	
Transport and related	115 (93.4%)	8 (6.5%)	<0.001	27 (21.9%)	40 (32.5%)	56 (45.5%)	0.03	71 (57.7%)	6 (4.8%)	33 (26.8%)	13 (10.5%)	0.05
Garages	42 (95.4%)	2 (4.5%)		6 (13.6%)	18 (40.9%)	20 (45.4%)		22 (50%)	2 (4.5%)	16 (36.3%)	4 (9%)	
Nuclear power	2 (100%)	0 (0%)		0 (0%)	0 (0%)	2 (100%)		1 (50%)	0 (0%)	1 (50%)	0 (0%)	
Driving jobs	85 (94.4%)	5 (5.5%)		18 (20%)	31 (34.4%)	41 (45.5%)		52 (57.7%)	5 (5.5%)	25 (27.7%)	8 (8.8%)	
Warehousing	29 (96.6%)	1 (3.3%)		9 (30%)	7 (23.3%)	14 (46.6%)		16 (53.3%)	0 (0%)	10 (33.3%)	4 (13.3%)	
Engine repairs	36 (100%)	0 (0%)		4 (11.1%)	17 (47.2%)	15 (41.6%)		19 (52.7%)	2 (5.5%)	13 (36.1%)	2 (5.5%)	

<https://doi.org/10.1371/journal.pone.0239338.t002>

contact (all  $p < 0.05$ ). Tasks that included welding, mineral oil lubricants, the use of protective resins and diesel contact also had higher than expected staged cancers (all  $p < 0.05$ ). Conversely, higher stage cancers only were seen with the use of cement and the making of plastic foam.

### Clinical outcomes and occupational history

We compared the occupational histories with treatment outcomes and observed various interesting associations (Fig 1A–1D). The occupation that was performed for the longest period was the occupation that was used in the analysis when compared to clinical outcomes. For example, workers exposed to diesel fuels or fumes (Cox, HR 1.97 (95% CI 1.31–2.98)  $p = 0.001$ ), or employed in a garage (HR 2.19 (95% CI 1.31–3.63)  $p = 0.001$ ) were more likely to have disease progression and receive radical treatment (HR 1.75 (95% CI 1.23–2.47)  $p = 0.002$ ) than others (Fig 1A and 1B). Participants undertaking plumbing/gas fitting/ventilation were also more likely to have disease progression (HR 2.15 (95% CI 1.15–4.01)  $p = 0.017$ ) and receive radical treatment (HR 2.28 (95% CI 1.39–3.72)  $p = 0.003$ ) than expected. Higher than expected progression (HR 2.36 (95% CI 1.19–4.69)  $p = 0.014$ ) and radical treatment rates (HR 1.89 (95% CI 1.02–3.49)  $p = 0.04$ ) were also seen in workers making/handling rubber products, whilst progression and radical treatment was more common in participants undertaking welding (HR 1.85 (95% CI 1.24–2.77)  $p = 0.003$ ) and exposed to welding materials (HR 1.92 (95% CI 1.27–2.91)  $p = 0.002$ ), than expected (Fig 1C). Consequently these workers (HR 1.85 (95% CI 1.24–2.77)  $p = 0.003$ ), and those involved in smelting (HR 1.80 (95% CI 1.11–2.91)  $p = 0.016$ ), were more likely to receive radical treatment than others. Higher than



Table 3. Substance exposure compared to patient sex and tumour grade/stage.

	Gender			Grade				Stage				Chi sq P
	Male	Female	Chi sq P	1	2	3	Chi sq P	Ta	Tis	T1	T2-4	
Dyes	9 (75%)	3 (25%)	0.83	2 (16.6%)	7 (58.3%)	3 (25%)	0.11	10 (83.3%)	0 (0%)	2 (16.6%)	0 (0%)	0.46
Crack-detection dyes	29 (96.6%)	1 (3.3%)	<b>0.01</b>	4 (12.9%)	16 (51.6%)	11 (35.4%)	<b>0.02</b>	23 (74.1%)	2 (6.4%)	5 (16.1%)	1 (3.2%)	0.28
Dyeing material	15 (93.7%)	1 (6.2%)	0.11	2 (12.5%)	6 (37.5%)	8 (50%)	0.26	9 (56.2%)	0 (0%)	4 (25%)	3 (18.7%)	0.67
Any other type of dye or stain	18 (81.8%)	4 (18.1%)	0.62	5 (20.8%)	8 (33.3%)	11 (45.8%)	0.53	13 (54.1%)	0 (0%)	5 (20.8%)	6 (25%)	0.2
Cadmium	16 (88.8%)	2 (11.1%)	0.24	2 (11.1%)	7 (38.8%)	9 (50%)	0.18	8 (44.4%)	1 (5.5%)	7 (38.8%)	2 (11.1%)	0.16
Chromium	29 (90.6%)	3 (9.3%)	<b>0.07</b>	3 (9.3%)	11 (34.3%)	18 (56.2%)	<b>0.02</b>	16 (50%)	3 (9.3%)	6 (18.7%)	7 (21.8%)	<b>0.05</b>
Coal, gas and oil by product chemicals	83 (100%)	0 (0%)	< <b>0.001</b>	16 (19.2%)	30 (36.1%)	37 (44.5%)	<b>0.04</b>	47 (56.6%)	2 (2.4%)	20 (24%)	14 (16.8%)	0.25
Gas works sludge	12 (100%)	0 (0%)	<b>0.06</b>	1 (8.3%)	6 (50%)	5 (41.6%)	0.17	7 (58.3%)	1 (8.3%)	1 (8.3%)	3 (25%)	0.33
Coking plant fumes or residues	48 (100%)	0 (0%)	< <b>0.001</b>	12 (25%)	13 (27%)	23 (47.9%)	0.34	27 (57.4%)	2 (4.2%)	9 (19.1%)	9 (19.1%)	0.46
Coal or coal products	67 (98.5%)	1 (1.4%)	< <b>0.001</b>	18 (26.4%)	17 (25%)	33 (48.5%)	0.17	34 (50%)	3 (4.4%)	18 (26.4%)	13 (19.1%)	<b>0.05</b>
Cooking fumes	23 (58.9%)	16 (41%)	< <b>0.001</b>	13 (32.5%)	11 (27.5%)	16 (40%)	0.9	25 (62.5%)	1 (2.5%)	6 (15%)	8 (20%)	0.44
Diesel exhaust fumes	90 (96.7%)	3 (3.2%)	< <b>0.001</b>	21 (22.1%)	27 (28.4%)	47 (49.4%)	<b>0.03</b>	49 (51.5%)	7 (7.3%)	24 (25.2%)	15 (15.7%)	<b>0.01</b>
Oily/greasy rust proofing chemicals	62 (95.3%)	3 (4.6%)	< <b>0.001</b>	13 (19.4%)	21 (31.3%)	33 (49.2%)	<b>0.05</b>	39 (58.2%)	2 (2.9%)	16 (23.8%)	10 (14.9%)	0.62
Diesel fuel	79 (98.7%)	1 (1.2%)	< <b>0.001</b>	13 (16%)	27 (33.3%)	41 (50.6%)	< <b>0.001</b>	35 (43.2%)	6 (7.4%)	27 (33.3%)	13 (16%)	< <b>0.001</b>
Aircraft fuel	9 (100%)	0 (0%)	0.1	1 (11.1%)	1 (11.1%)	7 (77.7%)	<b>0.05</b>	5 (55.5%)	1 (11.1%)	2 (22.2%)	1 (11.1%)	0.6
DDM or MDA	1 (100%)	0 (0%)	0.6	0 (0%)	1 (100%)	0 (0%)	0.3	1 (100%)	0 (0%)	0 (0%)	0 (0%)	0.9
MOCA	1 (100%)	0 (0%)	0.6	0 (0%)	1 (100%)	0 (0%)	0.3	1 (100%)	0 (0%)	0 (0%)	0 (0%)	0.9
Printers' ink	25 (83.3%)	5 (16.6%)	0.43	10 (33.3%)	11 (36.6%)	9 (30%)	0.61	20 (66.6%)	0 (0%)	5 (16.6%)	5 (16.6%)	0.64
Solvents e.g. trichloroethylene	112 (91.8%)	10 (8.1%)	< <b>0.001</b>	23 (18.4%)	48 (38.4%)	54 (43.2%)	< <b>0.001</b>	79 (63.2%)	2 (1.6%)	26 (20.8%)	18 (14.4%)	0.5
Arsenic	9 (90%)	1 (10%)	0.34	2 (20%)	6 (60%)	2 (20%)	0.13	7 (70%)	1 (10%)	1 (10%)	1 (10%)	0.58
Fungicide, wood preservative (e.g. o-toluidine)	35 (100%)	0 (0%)	< <b>0.001</b>	7 (20%)	9 (25.7%)	19 (54.2%)	0.11	18 (51.4%)	1 (2.8%)	11 (31.4%)	5 (14.2%)	0.27
4-aminobiphenyl	2 (100%)	0 (0%)	0.45	1 (50%)	1 (50%)	0 (0%)	0.54	2 (100%)	0 (0%)	0 (0%)	0 (0%)	0.78
Ionising radiation (radioactive sources)	0 (0%)	0 (0%)	NA	0 (0%)	0 (0%)	0 (0%)	NA	0 (0%)	0 (0%)	0 (0%)	0 (0%)	NA
Coal tar cream	11 (91.6%)	1 (8.3%)	0.23	3 (25%)	2 (16.6%)	7 (58.3%)	0.33	6 (50%)	0 (0%)	2 (16.6%)	4 (33.3%)	0.15
	14 (82.3%)	3 (17.6%)	0.63	8 (47%)	2 (11.7%)	7 (41.1%)	0.17	11 (64.7%)	1 (5.8%)	2 (11.7%)	3 (17.6%)	0.73

Abbreviations: DDM-n-Dodecyl β-D-maltoside, MOCA-Methylene bis 2,4 aniline, MDA- 4,4'-methylenedianiline.

<https://doi.org/10.1371/journal.pone.0239338.t003>

expected radical treatment rates were also seen in workers making/using cement (HR 1.85 (95% CI 1.24–2.73) p = 0.002). Finally, fewer than expected deaths were seen in healthcare workers (HR 0.17 (95% CI 0.04–0.70) p = 0.014) suggesting improved health (Fig 1D).

**Table 4. Occupational tasks compared to patient sex and tumour phenotype.**

	Gender			Grade				Stage				
	Male	Female	Chi sq P	1	2	3	Chi sq P	Ta	Tis	T1	T2-4	Chi sq P
Smelting metals	17 (100%)	0 (0%)	<b>0.02</b>	3 (17.6%)	3 (17.6%)	11 (64.7%)	0.07	8 (47%)	2 (11.7%)	5 (29.4%)	2 (11.7%)	0.13
Smelting metals nearby	34 (100%)	0 (0%)	<b>&lt;0.001</b>	7 (20%)	8 (22.8%)	20 (57.1%)	0.06	16 (45.7%)	2 (5.7%)	9 (25.7%)	8 (22.8%)	0.07
Assembling and repairing electrical goods	30 (93.7%)	2 (6.2%)	<b>0.02</b>	8 (25%)	9 (28.1%)	15 (46.8%)	0.56	19 (59.3%)	2 (6.2%)	4 (12.5%)	7 (21.8%)	0.21
Assembling and repairing electrical goods nearby	17 (100%)	0 (0%)	<b>0.02</b>	1 (5.8%)	7 (41.1%)	9 (52.9%)	<b>0.07</b>	8 (47%)	0 (0%)	4 (23.5%)	5 (29.4%)	0.12
Making products containing cadmium	5 (100%)	0 (0%)	0.23	2 (33.3%)	0 (0%)	4 (66.6%)	0.21	3 (50%)	1 (16.6%)	2 (33.3%)	0 (0%)	0.18
Making products containing cadmium nearby	7 (100%)	0 (0%)	0.15	1 (14.2%)	3 (42.8%)	3 (42.8%)	0.60	5 (71.4%)	0 (0%)	2 (28.5%)	0 (0%)	0.69
Making or using cement	63 (100%)	0 (0%)	<b>&lt;0.001</b>	14 (22.2%)	19 (30.1%)	30 (47.6%)	0.17	31 (50%)	6 (9.6%)	16 (25.8%)	9 (14.5%)	<b>&lt;0.001</b>
Making or using cement nearby	29 (93.5%)	2 (6.4%)	<b>0.03</b>	6 (19.3%)	9 (29%)	16 (51.6%)	0.22	16 (55.1%)	1 (3.4%)	8 (27.5%)	4 (13.7%)	0.67
Soldering or brazing	56 (96.5%)	2 (3.4%)	<b>&lt;0.001</b>	12 (20.3%)	18 (30.5%)	29 (49.1%)	0.10	31 (52.5%)	2 (3.3%)	15 (25.4%)	11 (18.6%)	0.17
Soldering or brazing nearby	31 (96.8%)	1 (3.1%)	<b>0.01</b>	9 (26.4%)	12 (35.2%)	13 (38.2%)	0.78	22 (64.7%)	2 (5.8%)	5 (14.7%)	5 (14.7%)	0.71
Metal plating	11 (84.6%)	2 (15.3%)	0.54	3 (23%)	3 (23%)	7 (53.8%)	0.50	6 (46.1%)	1 (7.6%)	4 (30.7%)	2 (15.3%)	0.48
Metal plating nearby	10 (100%)	0 (0%)	0.09	3 (30%)	3 (30%)	4 (40%)	0.99	7 (70%)	1 (10%)	1 (10%)	1 (10%)	0.58
Cadmium plating	2 (100%)	0 (0%)	0.45	0 (0%)	2 (100%)	0 (0%)	0.11	2 (100%)	0 (0%)	0 (0%)	0 (0%)	0.78
Cadmium plating nearby	6 (100%)	0 (0%)	0.18	1 (16.6%)	1 (16.6%)	4 (66.6%)	0.35	4 (66.6%)	1 (16.6%)	1 (16.6%)	0 (0%)	0.25
Fumes from quenching (heat treatment)	33 (97%)	1 (2.9%)	<b>0.01</b>	13 (36.1%)	6 (16.6%)	17 (47.2%)	0.16	22 (61.1%)	3 (8.3%)	8 (22.2%)	3 (8.3%)	0.29
Fumes from quenching (heat treatment) nearby	54 (94.7%)	3 (5.2%)	<b>&lt;0.001</b>	12 (20.6%)	18 (31%)	28 (48.2%)	0.13	31 (53.4%)	3 (5.1%)	14 (24.1%)	10 (17.2%)	0.25
Fumes from forging	32 (100%)	0 (0%)	<b>&lt;0.001</b>	9 (26.4%)	12 (35.2%)	13 (38.2%)	0.78	23 (67.6%)	1 (2.9%)	6 (17.6%)	4 (11.7%)	0.99
Fumes from forging nearby	43 (97.7%)	1 (2.2%)	<b>&lt;0.001</b>	9 (19.5%)	14 (30.4%)	23 (50%)	0.13	24 (53.3%)	2 (4.4%)	10 (22.2%)	9 (20%)	0.28
Crack detection /Non-destructive testing	23 (100%)	0 (0%)	<b>0.01</b>	3 (12.5%)	10 (41.6%)	11 (45.8%)	0.13	15 (62.5%)	1 (4.1%)	5 (20.8%)	3 (12.5%)	0.99
Crack detection /Non-destructive testing nearby	19 (95%)	1 (5%)	0.06	2 (10%)	8 (40%)	10 (50%)	0.12	11 (55%)	2 (10%)	3 (15%)	4 (20%)	0.22
Resins in 'cold box' techniques in foundries	4 (100%)	0 (0%)	0.28	0 (0%)	2 (50%)	2 (50%)	0.39	2 (50%)	1 (25%)	1 (25%)	0 (0%)	<b>0.09</b>
Resins in 'cold box' techniques in foundries nearby	4 (100%)	0 (0%)	0.28	0 (0%)	2 (50%)	2 (50%)	0.39	2 (50%)	0 (0%)	1 (25%)	1 (25%)	0.83
Contact with weld material and steel	65 (98.4%)	1 (1.5%)	<b>&lt;0.001</b>	11 (16.1%)	20 (29.4%)	37 (54.4%)	<b>&lt;0.001</b>	37 (54.4%)	5 (7.3%)	19 (27.9%)	7 (10.2%)	<b>0.04</b>
Contact with weld material and steel nearby	45 (95.7%)	2 (4.2%)	<b>&lt;0.001</b>	7 (14.8%)	19 (40.4%)	21 (44.6%)	<b>0.04</b>	24 (52.1%)	3 (6.5%)	9 (19.5%)	10 (21.7%)	0.09
Fume from producing and using coke, and converting coal to gas.	20 (100%)	0 (0%)	<b>0.01</b>	3 (15%)	5 (25%)	12 (60%)	0.10	10 (50%)	2 (10%)	4 (20%)	4 (20%)	0.20
Fume from producing and using coke, and converting coal to gas. nearby	24 (100%)	0 (0%)	<b>0.01</b>	3 (12.5%)	10 (41.6%)	11 (45.8%)	0.13	11 (45.8%)	1 (4.1%)	8 (33.3%)	4 (16.6%)	0.23

(Continued)

Table 4. (Continued)

	Gender			Grade				Stage				
	Male	Female	Chi sq P	1	2	3	Chi sq P	Ta	Tis	T1	T2-4	Chi sq P
Residues from coke and gas production	23 (95.8%)	1 (4.1%)	<b>0.03</b>	4 (16.6%)	7 (29.1%)	13 (54.1%)	0.18	12 (50%)	2 (8.3%)	7 (29.1%)	3 (12.5%)	0.26
Residues from coke and gas production nearby	18 (100%)	0 (0%)	<b>0.02</b>	5 (27.7%)	4 (22.2%)	9 (50%)	0.55	9 (50%)	1 (5.5%)	6 (33.3%)	2 (11.1%)	0.43
Making or handling plastics	23 (92%)	2 (8%)	0.08	9 (34.6%)	9 (34.6%)	8 (30.7%)	0.72	16 (61.5%)	2 (7.6%)	4 (15.3%)	4 (15.3%)	0.55
Making or handling plastics nearby	13 (92.8%)	1 (7.1%)	0.16	3 (21.4%)	4 (28.5%)	7 (50%)	0.61	9 (64.2%)	1 (7.1%)	1 (7.1%)	3 (21.4%)	0.43
Making or handling rubber products	20 (100%)	0 (0%)	<b>0.01</b>	3 (14.2%)	8 (38%)	10 (47.6%)	0.24	12 (57.1%)	1 (4.7%)	4 (19%)	4 (19%)	0.76
Making or handling rubber products nearby	8 (100%)	0 (0%)	0.13	2 (25%)	3 (37.5%)	3 (37.5%)	0.90	6 (75%)	0 (0%)	0 (0%)	2 (25%)	0.38
Breakdown of resins used to make moulds and cores	15 (100%)	0 (0%)	<b>0.03</b>	2 (13.3%)	5 (33.3%)	8 (53.3%)	0.28	6 (40%)	1 (6.6%)	5 (33.3%)	3 (20%)	0.23
Breakdown of resins used to make moulds and cores nearby	4 (80%)	1 (20%)	0.89	1 (20%)	2 (40%)	2 (40%)	0.84	4 (80%)	0 (0%)	1 (20%)	0 (0%)	0.81
Making chemicals from coal, coke, oil and gas byproducts	17 (100%)	0 (0%)	<b>0.02</b>	4 (23.5%)	3 (17.6%)	10 (58.8%)	0.20	9 (56.2%)	2 (12.5%)	3 (18.7%)	2 (12.5%)	0.22
Making chemicals from coal, coke, oil and gas byproducts nearby	14 (93.3%)	1 (6.6%)	0.14	3 (20%)	6 (40%)	6 (40%)	0.59	10 (66.6%)	0 (0%)	4 (26.6%)	1 (6.6%)	0.72
e.g. additives to aeroplane fuel	3 (100%)	0 (0%)	0.35	2 (66.6%)	0 (0%)	1 (33.3%)	0.34	3 (100%)	0 (0%)	0 (0%)	0 (0%)	0.65
e.g. additives to aeroplane fuel nearby	2 (100%)	0 (0%)	0.45	1 (50%)	1 (50%)	0 (0%)	0.54	2 (100%)	0 (0%)	0 (0%)	0 (0%)	0.78
Mineral oils used as lubricants and coolants	61 (98.3%)	1 (1.6%)	< <b>0.001</b>	9 (14.2%)	24 (38%)	30 (47.6%)	<b>0.01</b>	30 (47.6%)	6 (9.5%)	18 (28.5%)	9 (14.2%)	<b>0.00</b>
Mineral oils used as lubricants and coolants nearby	32 (94.1%)	2 (5.8%)	<b>0.02</b>	7 (20.5%)	12 (35.2%)	15 (44.1%)	0.39	21 (63.6%)	0 (0%)	6 (18.1%)	6 (18.1%)	0.53
Making and using resins	28 (100%)	0 (0%)	< <b>0.001</b>	3 (10.3%)	13 (44.8%)	13 (44.8%)	<b>0.04</b>	16 (55.1%)	0 (0%)	12 (41.3%)	1 (3.4%)	<b>0.01</b>
Making and using resins nearby	12 (92.3%)	1 (7.6%)	0.20	2 (15.3%)	3 (23%)	8 (61.5%)	0.20	7 (53.8%)	2 (15.3%)	4 (30.7%)	0 (0%)	<b>0.03</b>
Making plastic foam	2 (66.6%)	1 (33.3%)	0.65	2 (66.6%)	0 (0%)	1 (33.3%)	0.34	3 (100%)	0 (0%)	0 (0%)	0 (0%)	0.65
Making plastic foam nearby	6 (100%)	0 (0%)	0.18	1 (16.6%)	3 (50%)	2 (33.3%)	0.56	3 (50%)	2 (33.3%)	1 (16.6%)	0 (0%)	<b>0.00</b>
Degreasing	55 (98.2%)	1 (1.7%)	< <b>0.001</b>	12 (20.6%)	20 (34.4%)	26 (44.8%)	0.19	32 (55.1%)	2 (3.4%)	15 (25.8%)	9 (15.5%)	0.41
Degreasing nearby	30 (93.7%)	2 (6.2%)	<b>0.02</b>	7 (21.8%)	11 (34.3%)	14 (43.7%)	0.51	20 (62.5%)	1 (3.1%)	5 (15.6%)	6 (18.7%)	0.69
Dry-cleaning	4 (66.6%)	2 (33.3%)	0.52	0 (0%)	3 (50%)	3 (50%)	0.24	3 (50%)	0 (0%)	2 (33.3%)	1 (16.6%)	0.78
Dry-cleaning nearby	2 (66.6%)	1 (33.3%)	0.65	0 (0%)	0 (0%)	3 (100%)	0.09	2 (66.6%)	0 (0%)	0 (0%)	1 (33.3%)	0.62
Timber treatment	21 (95.4%)	1 (4.5%)	<b>0.04</b>	6 (27.2%)	4 (18.1%)	12 (54.5%)	0.23	13 (59%)	1 (4.5%)	6 (27.2%)	2 (9%)	0.77
Timber treatment nearby	9 (100%)	0 (0%)	0.10	2 (22.2%)	3 (33.3%)	4 (44.4%)	0.84	5 (55.5%)	1 (11.1%)	2 (22.2%)	1 (11.1%)	0.60
Plumbing, gas-fitting, heat and ventilation fitting	29 (100%)	0 (0%)	< <b>0.001</b>	5 (17.2%)	7 (24.1%)	17 (58.6%)	0.06	13 (46.4%)	3 (10.7%)	6 (21.4%)	6 (21.4%)	<b>0.03</b>
Plumbing, gas-fitting, heat and ventilation fitting nearby	13 (100%)	0 (0%)	<b>0.05</b>	4 (30.7%)	3 (23%)	6 (46.1%)	0.79	7 (58.3%)	0 (0%)	2 (16.6%)	3 (25%)	0.54

(Continued)

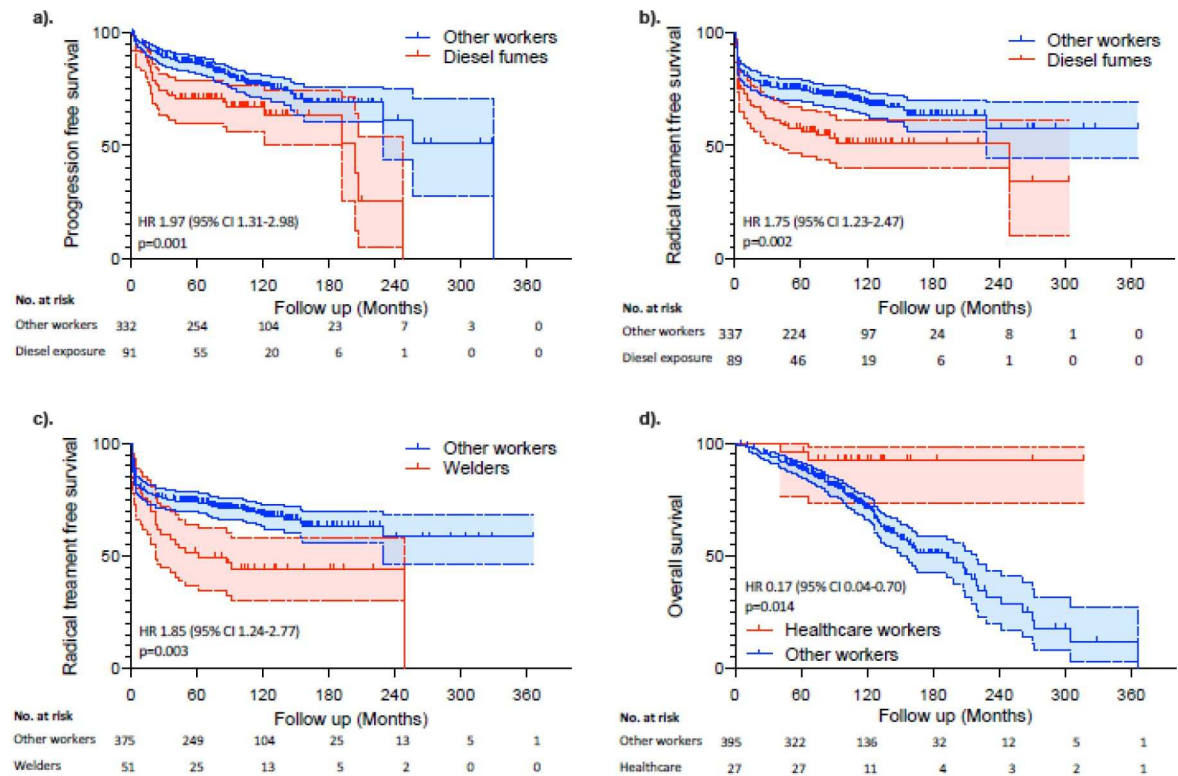
Table 4. (Continued)

	Gender			Grade				Stage				
	Male	Female	Chi sq P	1	2	3	Chi sq P	Ta	Tis	T1	T2-4	Chi sq P
Painting	31 (88.5%)	4 (11.4%)	0.10	9 (25.7%)	15 (42.8%)	11 (31.4%)	0.27	21 (61.7%)	1 (2.9%)	9 (26.4%)	3 (8.8%)	0.72
Painting nearby	18 (90%)	2 (10%)	0.17	4 (20%)	8 (40%)	8 (40%)	0.49	12 (63.1%)	1 (5.2%)	4 (21%)	2 (10.5%)	0.96
Contact with industrial diesel	35 (100%)	0 (0%)	<0.001	4 (11.1%)	11 (30.5%)	21 (58.3%)	0.01	13 (36.1%)	4 (11.1%)	14 (38.8%)	5 (13.8%)	<0.001
Contact with industrial diesel nearby	11 (100%)	0 (0%)	0.07	2 (18.1%)	3 (27.2%)	6 (54.5%)	0.49	7 (63.6%)	0 (0%)	1 (9%)	3 (27.2%)	0.38
Separated out impurities, ores, scrap or wastes	11 (91.6%)	1 (8.3%)	0.23	3 (25%)	4 (33.3%)	5 (41.6%)	0.90	5 (41.6%)	1 (8.3%)	5 (41.6%)	1 (8.3%)	0.16
Separated out impurities, ores, scrap or wastes nearby	4 (100%)	0 (0%)	0.28	1 (25%)	1 (25%)	2 (50%)	0.89	1 (25%)	0 (0%)	2 (50%)	1 (25%)	0.31
Pesticide and herbicide treatments	10 (100%)	0 (0%)	0.09	2 (20%)	3 (30%)	5 (50%)	0.68	7 (70%)	0 (0%)	2 (20%)	1 (10%)	0.94
Pesticide and herbicide treatments nearby	5 (100%)	0 (0%)	0.23	0 (0%)	2 (40%)	3 (60%)	0.31	1 (20%)	0 (0%)	3 (60%)	1 (20%)	0.10
Burning plastics	10 (100%)	0 (0%)	0.09	3 (30%)	2 (20%)	5 (50%)	0.68	6 (60%)	0 (0%)	2 (20%)	2 (20%)	0.83
Burning plastics nearby	6 (100%)	0 (0%)	0.18	2 (33.3%)	2 (33.3%)	2 (33.3%)	0.97	4 (66.6%)	0 (0%)	1 (16.6%)	1 (16.6%)	0.96
Radiotherapy	4 (66.6%)	2 (33.3%)	0.52	2 (33.3%)	1 (16.6%)	3 (50%)	0.73	3 (50%)	0 (0%)	2 (33.3%)	1 (16.6%)	0.78
Radiotherapy nearby	2 (100%)	0 (0%)	0.45	1 (50%)	1 (50%)	0 (0%)	0.54	2 (100%)	0 (0%)	0 (0%)	0 (0%)	0.78
Industrial radiography	3 (100%)	0 (0%)	0.35	0 (0%)	1 (33.3%)	2 (66.6%)	0.45	1 (33.3%)	0 (0%)	1 (33.3%)	1 (33.3%)	0.58
Industrial radiography nearby	4 (80%)	1 (20%)	0.89	2 (40%)	1 (20%)	2 (40%)	0.85	5 (100%)	0 (0%)	0 (0%)	0 (0%)	0.44

<https://doi.org/10.1371/journal.pone.0239338.t004>

## Discussion

We report the outcomes from BC in consecutive patient cohort recruited in South Yorkshire, UK. We find a variety of workers with BC with high risks for aggressive disease that need radical treatment. There are several key findings that require discussion. Firstly, the occupational classes, tasks and contacts reflect local industrial patterns. Most men were employed in the steel, engineering, mining and building sectors, and few worked in industries more typical for BC (with aromatic amine contact); such as rubber, printing, painting and textile sectors. The carcinogens within our population are likely to be a mixture of PAHs, diesel fumes and combustion products. We did find some aromatic amines in occult use in the engineering and metal industries (such as crack detection dyes for non-destructive testing [13]), but these appeared uncommon. PAH exposure arises through cutaneous contact with lubricants, oils and metal working fluids, or inhalation of fumes or combustion products. Our findings contrast and complement a recent systematic review of occupational BC within the UK we conducted [8]. Within this review of 703,941 persons, we found the highest incidence of BC was in chemical process, rubber and dye workers, whilst electrical, transport and chemical process workers had the highest risks of death from BC. Our current data show that electrical workers have a high risk of developing aggressive BC and focus this risk on tasks such as welding and soldering. Fumes from these tasks contain lead oxide, heavy metals (arsenic, cadmium, chromium and nickel etc.) and colophony (rosin based flux containing acetone and carbon



**Fig 1.** a. Progression free survival of bladder cancer of patients exposed and not exposed to occupational diesel fumes. b. Radical treatment free survival of bladder cancer of patients exposed and not exposed to occupational diesel fumes. c. Radical treatment free survival of bladder cancer of patients exposed and not exposed to occupational welding. d. Overall survival of bladder cancer from patients who were healthcare workers compared to any other form of work.

<https://doi.org/10.1371/journal.pone.0239338.g001>

monoxide). Our observations may partly explain the high prevalence and mortality from BC seen in Yorkshire [8].

Secondly, our data support the carcinogenicity of diesel fumes to the urothelium. Previous reports have examined this systematically [23] and in 2012 the IARC classified diesel exhaust fumes as carcinogenic (class 1) to the lung (with ‘sufficient evidence’) and the bladder (with ‘limited evidence’) [24]. We add to these data by showing that contact with diesel fuels and fumes were associated with high grade/high stage BC and higher risks of disease progression. Reflecting employment patterns, diesel contact was more common in men than women, and there was some evidence of a dose interaction with cigarette smoking (workers with diesel exhaust exposure had higher pack years (mean:  $41 \pm 34$ ) than those without (mean  $30 \pm 22.9$ , T test  $p = 0.008$ )). Workers with diesel exposure were commonly employed in the welding, soldering, agriculture, building, transport and engine repair sectors, and undertook typical task for these sectors (e.g. driving, mixing cement, welding). It is also worth noting that diesel exposure and garage work can also occur with hobbies, reflecting an additional exposure.

Thirdly, our data suggest that occupational history should be included in the BC care pathway. BC is one of the commonest human cancers and one of the most expensive to manage. Much of this expense is spent on monitoring patients with NMI cancers or in screening people with non-visible haematuria [2,25]. Better targeting of resource, with improved survival, more effective screening and lower costs, could be achieved if patient risk stratification was available [26]. Whilst current guidelines rely on age and extent of haematuria [3], our findings suggest that occupational history could guide clinicians to persons at risk of aggressive BC. For

example, screening of a few very-high risk persons, e.g. those with aristolochic acid exposure [27] or employees working with aromatic amines [28] is performed, but our data suggest occupational urothelial carcinogenic exposures are common and could help triage a population (by focusing upon the risks of aggressive BCs).

Fourthly, there were differences in exposures between men and women. These included distinct patterns of employment, differences in smoking rates and patterns (direct and passive ETS), hair dye use and hobbies. Given that most participants were male; our reported findings mostly reflect risk in men. Analysis of females only, suggests associations between high grade/high stage BC and workers undertaking electroplating and cutlery manufacture, and tasks such as degreasing and painting ( $p < 0.05$ ).

There are limitations to our work. Most importantly, the sample size was small and so this data should be viewed as hypothesis-generating, rather than definitive. Our aim was to undertake an explorative cohort study (rather than a clinical trial) and so no formal power calculation was performed. This reflects that very little is known about occupational risks and bladder cancer phenotypes and so powering was not possible. Our findings require validation in larger cohorts enriched for engineering and metal workers. Follow up was immature (median 8.4 years) in our series, and so many progressive tumours had not led to death in the participants. As such, we used stage and grade, progression and radical treatment, as surrogate measures for BC specific mortality. With longer follow up, we would look to see if these occupational tasks were associated with mortality or whether aggressive treatment could prevent this. Finally, the questionnaires were self-completed. Workers may have missed key exposures and others appeared more prominent than their actual workload. We asked participants to estimate the duration of each task, but these dates were often missing or very broad.

## Conclusions

We identified multiple occupational tasks and contacts associated with high grade and high stage BC. Workers exposed to diesel fumes, employed in a garage, undertaking plumbing/gas fitting/ventilation, welding were more likely to have disease progression and receive radical treatment than others. These findings require validation and could be used to risk stratify persons with haematuria or follow up of non-invasive BC.

## Supporting information

**S1 Fig. Survival Curves for PLOS One.**  
(PDF)

**S1 File. No logo Sheff Occup Questionnaire v4 08 11 11.s**  
(PDF)

## Author Contributions

**Conceptualization:** Jon Griffin, Aidan P. Noon, Syed Hussain, Marcus G. Cumberbatch, James W.F. Catto.

**Data curation:** Ibrahim Jubber, Jon Griffin, Aidan P. Noon, Syed Hussain, Marcus G. Cumberbatch, James W.F. Catto.

**Formal analysis:** Ibrahim Jubber, Marcus G. Cumberbatch, James W.F. Catto.

**Funding acquisition:** James W.F. Catto.

**Investigation:** Oliver Reed, Ibrahim Jubber, Jon Griffin, Aidan P. Noon, Louise Goodwin, Marcus G. Cumberbatch, James W.F. Catto.

**Methodology:** Oliver Reed, Ibrahim Jubber, Louise Goodwin, Marcus G. Cumberbatch, James W.F. Catto.

**Project administration:** Louise Goodwin, James W.F. Catto.

**Resources:** Louise Goodwin, James W.F. Catto.

**Software:** Ibrahim Jubber, Marcus G. Cumberbatch.

**Supervision:** Ibrahim Jubber, Marcus G. Cumberbatch, James W.F. Catto.

**Validation:** James W.F. Catto.

**Visualization:** James W.F. Catto.

**Writing – original draft:** Oliver Reed.

**Writing – review & editing:** James W.F. Catto.

## References

1. Antoni S, Ferlay J, Soerjomataram I, Znaor A, Jemal A, Bray F. Bladder Cancer Incidence and Mortality: A Global Overview and Recent Trends. *Eur Urol*. 2017; 71(1):96–108. <https://doi.org/10.1016/j.eururo.2016.06.010> PMID: 27370177
2. Jubber I, Shariat SF, Conroy S, Tan WS, Gordon PC, Lotan Y, et al. Non-visible haematuria for the Detection of Bladder, Upper Tract, and Kidney Cancer: An Updated Systematic Review and Meta-analysis. *Eur Urol*. 2020; 77(5):583–98. <https://doi.org/10.1016/j.eururo.2019.10.010> PMID: 31791622
3. Babjuk M, Bohle A, Burger M, Capoun O, Cohen D, Comperat EM, et al. EAU Guidelines on Non-Muscle-invasive Urothelial Carcinoma of the Bladder: Update 2016. *Eur Urol*. 2017; 71(3):447–61. <https://doi.org/10.1016/j.eururo.2016.05.041> PMID: 27324428
4. Noon AP, Albertsen PC, Thomas F, Rosario DJ, Catto JW. Competing mortality in patients diagnosed with bladder cancer: evidence of undertreatment in the elderly and female patients. *Br J Cancer*. 2013; 108(7):1534–40. <https://doi.org/10.1038/bjc.2013.106> PMID: 23481180
5. Cumberbatch MGK, Jubber I, Black PC, Esperto F, Figueroa JD, Kamat AM, et al. Epidemiology of Bladder Cancer: A Systematic Review and Contemporary Update of Risk Factors in 2018. *Eur Urol*. 2018; 74(6):784–95. <https://doi.org/10.1016/j.eururo.2018.09.001> PMID: 30268659
6. Cumberbatch MG, Rota M, Catto JWF, La Vecchia C. The Role of Tobacco Smoke in Bladder and Kidney Carcinogenesis: A Comparison of Exposures and Meta-analysis of Incidence and Mortality Risks. *European Urology*. 2016; 70(3):458–66. <https://doi.org/10.1016/j.eururo.2015.06.042> PMID: 26149669
7. Cumberbatch MG, Cox A, Teare D, Catto JW. Contemporary Occupational Carcinogen Exposure and Bladder Cancer: A Systematic Review and Meta-analysis. *JAMA Oncol*. 2015; 1(9):1282–90. <https://doi.org/10.1001/jamaoncol.2015.3209> PMID: 26448641
8. Cumberbatch M, Windsor-Shellard B, Catto JWF. The contemporary landscape of occupational bladder cancer within the United Kingdom: A meta-analysis of risks over the last 80 years *BJU Int*. 2017; 119(1):100–9. <https://doi.org/10.1111/bju.13561> PMID: 27332981
9. Freedman ND, Silverman DT, Hollenbeck AR, Schatzkin A, Abnet CC. Association between smoking and risk of bladder cancer among men and women. *JAMA: the journal of the American Medical Association*. 2011; 306(7):737–45.
10. Bourke L, Bauld L, Bullen C, Cumberbatch M, Giovannucci E, Islami F, et al. E-cigarettes and Urologic Health: A Collaborative Review of Toxicology, Epidemiology, and Potential Risks. *Eur Urol*. 2017; 71(6):915–23. <https://doi.org/10.1016/j.eururo.2016.12.022> PMID: 28073600
11. Porru S, Pavanello S, Carta A, Arici C, Simeone C, Izzotti A, et al. Complex relationships between occupation, environment, DNA adducts, genetic polymorphisms and bladder cancer in a case-control study using a structural equation modeling. *PLoS One*. 2014; 9(4):e94566. <https://doi.org/10.1371/journal.pone.0094566> PMID: 24722645
12. Rushton L, Bagga S, Bevan R, Brown TP, Cherrie JW, Holmes P, et al. Occupation and cancer in Britain. *Br J Cancer*. 2010; 102(9):1428–37. <https://doi.org/10.1038/sj.bjc.6605637> PMID: 20424618

13. Noon AP, Pickvance SV, Catto JW. Occupational exposure to dye penetrants used for metal crack detection and the potential for bladder cancer. *Occup Environ Med*. 2012; 69:300–1.
14. Knowles MA, Hurst CD. Molecular biology of bladder cancer: new insights into pathogenesis and clinical diversity. *Nat Rev Cancer*. 2015; 15(1):25–41. <https://doi.org/10.1038/nrc3817> PMID: 25533674
15. Hurst C, Rosenberg J, Knowles M. SnapShot: Bladder Cancer. *Cancer Cell*. 2018; 34(2):350–e1. <https://doi.org/10.1016/j.ccell.2018.07.013> PMID: 30107181
16. Linton KD, Rosario DJ, Thomas F, Rubin N, Goepel JR, Abbod MF, et al. Disease Specific Mortality in Patients with Low Risk Bladder Cancer and the Impact of Cystoscopic Surveillance. *Journal of Urology*. 2013; 189(3):828–33. <https://doi.org/10.1016/j.juro.2012.09.084> PMID: 23017513
17. Catto JWF, Miah S, Owen HC, Bryant H, Myers K, Dudzic E, et al. Distinct MicroRNA Alterations Characterize High- and Low-Grade Bladder Cancer. *Cancer Research*. 2009; 69(21):8472–81. <https://doi.org/10.1158/0008-5472.CAN-09-0744> PMID: 19843843
18. Robertson AG, Kim J, Al-Ahmadie H, Bellmunt J, Guo G, Cherniack AD, et al. Comprehensive Molecular Characterization of Muscle-Invasive Bladder Cancer. *Cell*. 2018; 174(4):1033. <https://doi.org/10.1016/j.cell.2018.07.036> PMID: 30096301
19. Noon AP, Martinsen JI, Catto JWF, Pukkala E. Occupation and Bladder Cancer Phenotype: Identification of Workplace Patterns That Increase the Risk of Advanced Disease Beyond Overall Incidence. *Eur Urol Focus* 2018 Sep; 4(5):725–730. 2016. <https://doi.org/10.1016/j.euf.2016.06.014> PMID: 28753772
20. Cartwright RA, Robinson MR, Glashan RW, Gray BK, Hamilton-Stewart P, Cartwright SC, et al. Does the use of stained maggots present a risk of bladder cancer to coarse fishermen? *Carcinogenesis*. 1983; 4(1):111–3. <https://doi.org/10.1093/carcin/4.1.111> PMID: 6821882
21. Beane Freeman LE, Cantor KP, Baris D, Nuckols JR, Johnson A, Colt JS, et al. Bladder Cancer and Water Disinfection By-product Exposures through Multiple Routes: A Population-Based Case-Control Study (New England, USA). *Environ Health Perspect*. 2017; 125(6):067010. <https://doi.org/10.1289/EHP89> PMID: 28636529
22. Paner GP, Stadler WM, Hansel DE, Montironi R, Lin DW, Amin MB. Updates in the Eighth Edition of the Tumor-Node-Metastasis Staging Classification for Urologic Cancers. *Eur Urol*. 2018; 73(4):560–9. <https://doi.org/10.1016/j.eururo.2017.12.018> PMID: 29325693
23. Boffetta P, Silverman DT. A meta-analysis of bladder cancer and diesel exhaust exposure. *Epidemiology*. 2001; 12(1):125–30. <https://doi.org/10.1097/00001648-200101000-00021> PMID: 11138807
24. Benbrahim-Tallaa L, Baan RA, Grosse Y, Lauby-Secretan B, El Ghissassi F, Bouvard V, et al. Carcinogenicity of diesel-engine and gasoline-engine exhausts and some nitroarenes. *Lancet Oncol*. 2012; 13(7):663–4. [https://doi.org/10.1016/s1470-2045\(12\)70280-2](https://doi.org/10.1016/s1470-2045(12)70280-2) PMID: 22946126
25. Svatek RS, Hollenbeck BK, Holmang S, Lee R, Kim SP, Stenzl A, et al. The economics of bladder cancer: costs and considerations of caring for this disease. *Eur Urol*. 2014; 66(2):253–62. <https://doi.org/10.1016/j.eururo.2014.01.006> PMID: 24472711
26. Larre S, Catto JW, Cookson MS, Messing EM, Shariat SF, Soloway MS, et al. Screening for bladder cancer: rationale, limitations, whom to target, and perspectives. *Eur Urol*. 2013; 63(6):1049–58. <https://doi.org/10.1016/j.eururo.2012.12.062> PMID: 23313034
27. Zlotta AR, Roumeguere T, Kuk C, Alkhateeb S, Rorive S, Lemy A, et al. Select screening in a specific high-risk population of patients suggests a stage migration toward detection of non-muscle-invasive bladder cancer. *European urology*. 2011; 59(6):1026–31. <https://doi.org/10.1016/j.eururo.2011.03.027> PMID: 21458152
28. Pesch B, Nasterlack M, Eberle F, Bonberg N, Taeger D, Leng G, et al. The role of haematuria in bladder cancer screening among men with former occupational exposure to aromatic amines. *BJU Int*. 2011; 108(4):546–52. <https://doi.org/10.1111/j.1464-410X.2010.09971.x> PMID: 21223477