



Deposited via The University of Leeds.

White Rose Research Online URL for this paper:

<https://eprints.whiterose.ac.uk/id/eprint/164924/>

Version: Published Version

---

**Monograph:**

Dixon, A, Bowers, K, Tilley, N et al. (2020) The First Local Lockdown. Project Report. Statistical Bulletin on Crime and COVID-19 . University of Leeds ISSN 2634-4424

<https://doi.org/10.5518/100/31>

---

**Reuse**

This article is distributed under the terms of the Creative Commons Attribution (CC BY) licence. This licence allows you to distribute, remix, tweak, and build upon the work, even commercially, as long as you credit the authors for the original work. More information and the full terms of the licence here:

<https://creativecommons.org/licenses/>

**Takedown**

If you consider content in White Rose Research Online to be in breach of UK law, please notify us by emailing [eprints@whiterose.ac.uk](mailto:eprints@whiterose.ac.uk) including the URL of the record and the reason for the withdrawal request.

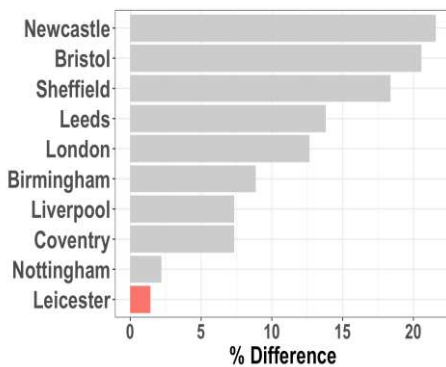


### The First Local Lockdown

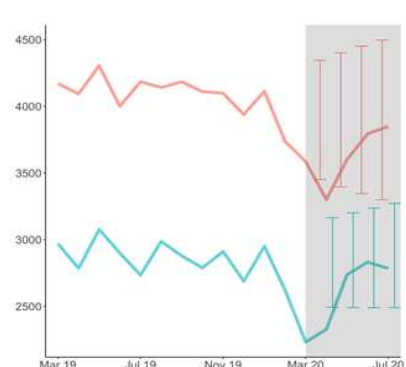
Antho Dixon, Kate Bowers, Nick Tilley, Graham Farrell

A 'local lockdown' was introduced in Leicester city on 29 June: the city had < 1% of the UK population but 10% of all positive COVID-19 cases the week before. We examine recorded crime in July, the first month.

**Fig 1: Ten largest cities: monthly % change in all recorded crime in July**

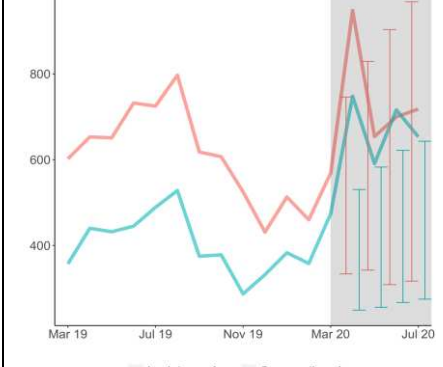


**Fig 2: Crime in city (red) v rest of Leicestershire**



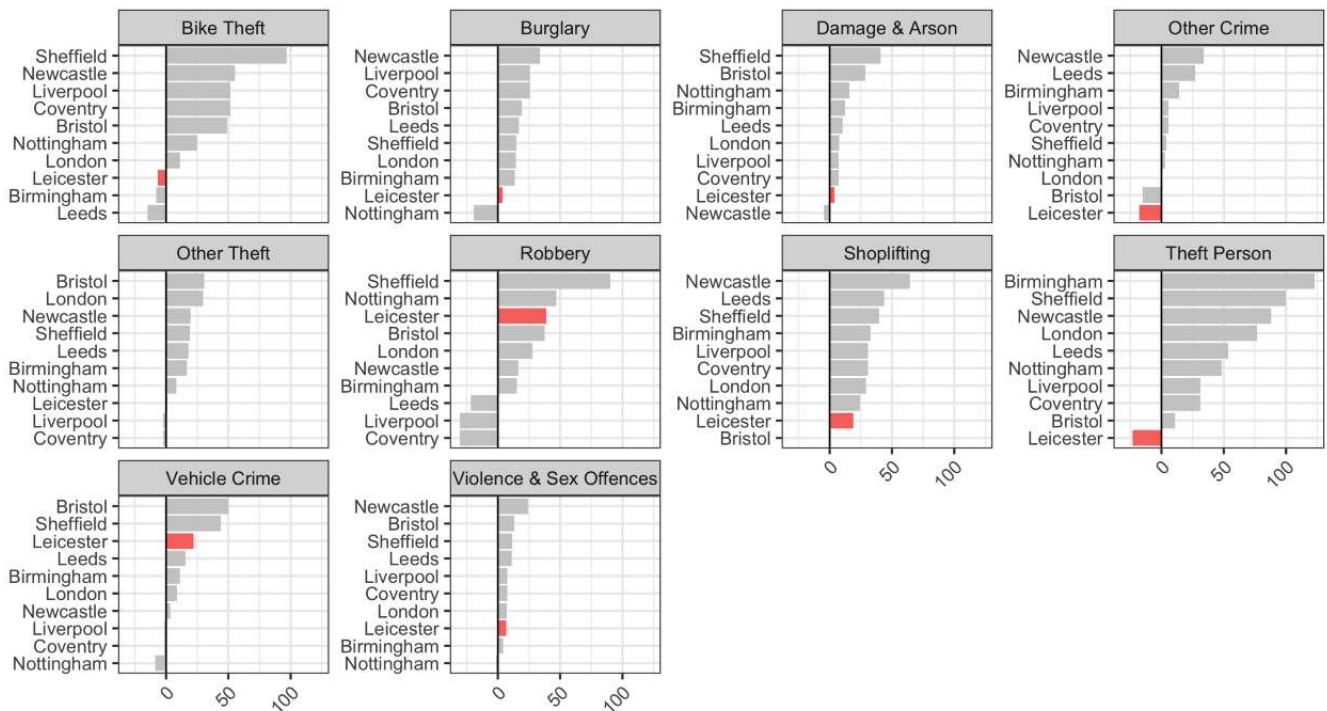
March 2019 to July 2020

**Fig 3: ASB in City (red) v rest of county**



March 2019-July2020

**Fig 4: Crime types previously decreasing nationally in lockdown (% change in July on June)**



#### Preliminary Findings

**Fig 1** shows the most populous 10 cities in England and Wales. In July, total recorded crime increased more in cities other than Leicester. **Figs 2 and 3** shows total recorded crime and ASB increased in the city but *declined* in the remainder of the county of Leicestershire. **Fig 4** shows differences in shoplifting and other theft were most apparent. **Fig 5** shows weapons offences decreased in most cities *including* Leicester. **Fig 6** suggests no immediately discernible pattern in the proportion of Leicestershire's crime in the city in July 2020 relative to previous months in the year



Fig 5: Crimes and ASB previously increasing nationally in lockdown (% change in July on June)

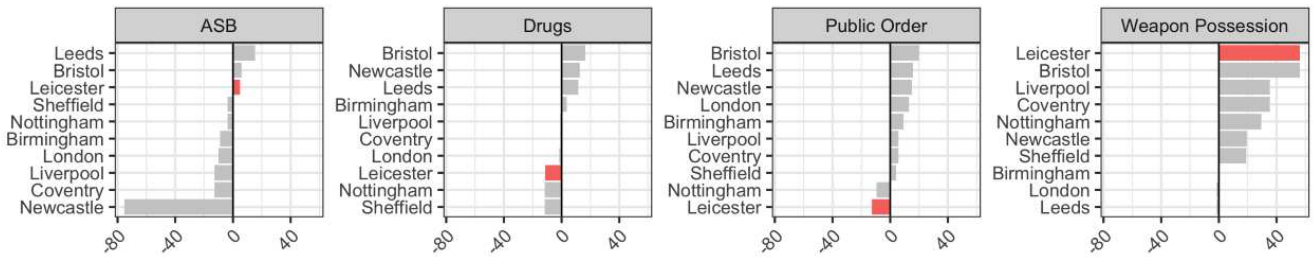
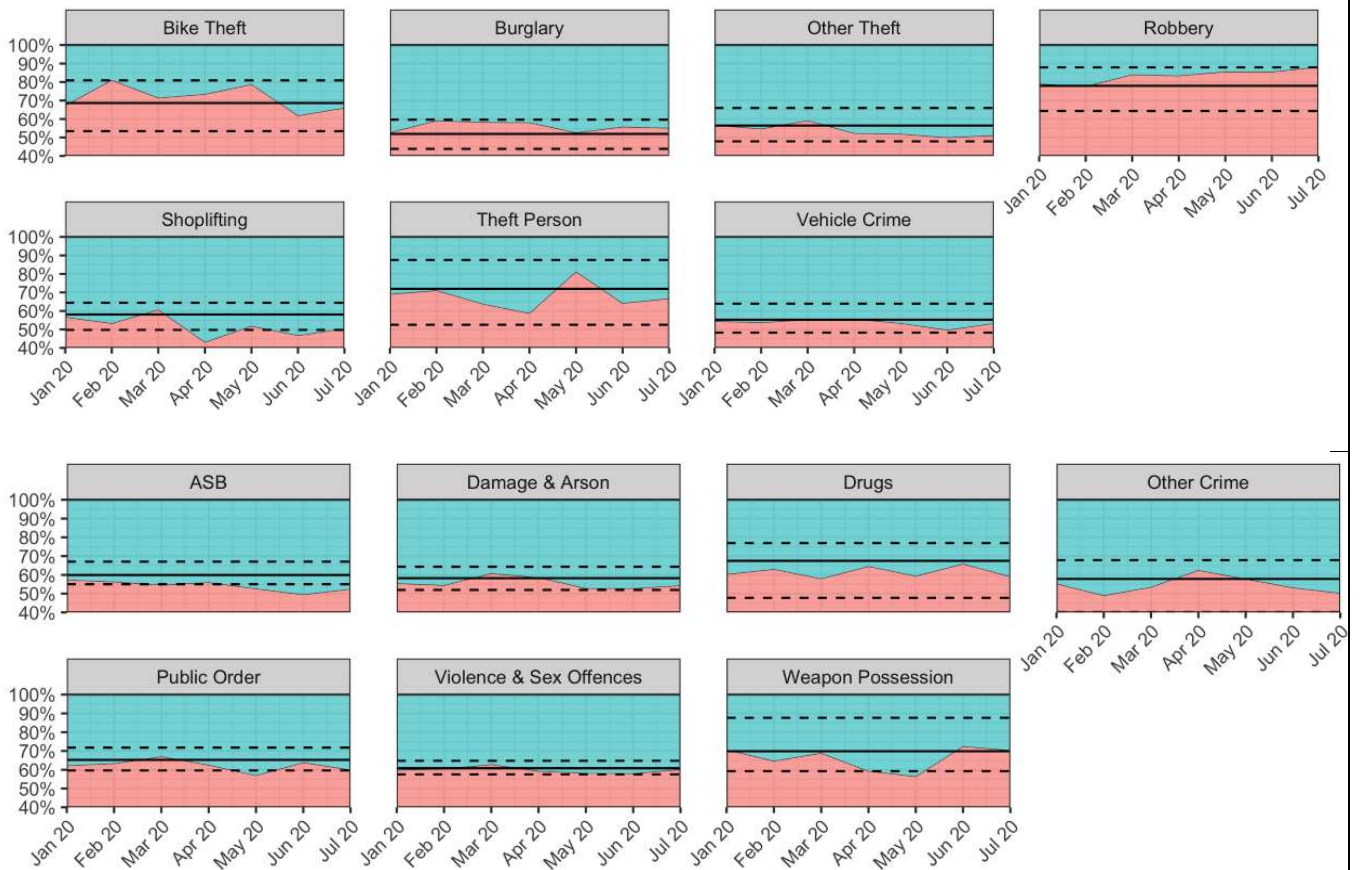


Fig 6: Proportion of Crime in Leicester city (red) versus remainder of Leicestershire (blue) Jan-July 2020



Sources: World Population Review, data.police.uk.

Reference as: Dixon, A., K. J. Bowers, N. Tilley and G. Farrell. (2020). The First Local Lockdown, *Statistical Bulletin on Crime and COVID-19, Issue 7*. Leeds: University of Leeds.

© The Authors (2020). DOI: <http://doi.org/10.5518/100/31> . ISSN: 2634-4424. This work is licensed under a Creative Commons (CC-BY 4.0). This research was funded by the Economic and Social Research Council under the UK Research and Innovation open call on COVID-19, grant ES/V00445X/1. See [www.covid19-crime.com](http://www.covid19-crime.com)