



This is a repository copy of *Routine measurement of serum procalcitonin allows antibiotics to be safely withheld in patients admitted to hospital with SARS-CoV-2 infection.*

White Rose Research Online URL for this paper:

<https://eprints.whiterose.ac.uk/163065/>

Version: Submitted Version

Article:

Williams, E.J. orcid.org/0000-0002-5612-610X, Mair, L. orcid.org/0000-0003-0446-1640, de Silva, T.I. orcid.org/0000-0002-6498-9212 et al. (7 more authors) (Submitted: 2020) Routine measurement of serum procalcitonin allows antibiotics to be safely withheld in patients admitted to hospital with SARS-CoV-2 infection. medRxiv. (Submitted)

<https://doi.org/10.1101/2020.06.29.20136572>

Reuse

This article is distributed under the terms of the Creative Commons Attribution-NonCommercial-NoDerivs (CC BY-NC-ND) licence. This licence only allows you to download this work and share it with others as long as you credit the authors, but you can't change the article in any way or use it commercially. More information and the full terms of the licence here: <https://creativecommons.org/licenses/>

Takedown

If you consider content in White Rose Research Online to be in breach of UK law, please notify us by emailing eprints@whiterose.ac.uk including the URL of the record and the reason for the withdrawal request.



eprints@whiterose.ac.uk
<https://eprints.whiterose.ac.uk/>

Routine measurement of serum procalcitonin allows antibiotics to be safely withheld in patients admitted to hospital with SARS-CoV-2 infection.

Emma J. Williams^{a,b}, Luke Mair^b, Thushan I. de Silva^{b,c,e}, Dan J. Green^d, Philip House^f, Kay Cawthron^a, Christopher Gillies^f, James Wigfull^f, Helena Parsons^a, David G. Partridge^{a,e}

a: Department of Microbiology, Sheffield Teaching Hospitals NHS Foundation Trust, Sheffield, United Kingdom

b: South Yorkshire Regional Department of Infection and Tropical Medicine, Sheffield Teaching Hospitals NHS Foundation Trust, Sheffield, United Kingdom

c: Department of Infection, Immunity and Cardiovascular Disease, Medical School, University of Sheffield, United Kingdom

d: Section of Public Health, School of Health and Related Research (SchARR), University of Sheffield, Sheffield, United Kingdom

e: Florey Institute for Host-Pathogen Interaction, University of Sheffield

f: Department of Critical Care, Sheffield Teaching Hospitals NHS Foundation Trust, Sheffield, United Kingdom

Address for correspondence: Microbiology Dept, Laboratory Medicine Building, Northern General Hospital, North Lane, Herries Road, Sheffield, S5 7AU

Keywords. Antimicrobial Stewardship, COVID-19, Procalcitonin

ABSTRACT

Background. It can be a diagnostic challenge to identify COVID-19 patients without bacterial co-infection in whom antibiotics can be safely stopped. We sought to evaluate the validity of a guideline that recommends withholding antibiotics in patients with a low serum procalcitonin (PCT).

Methods. We retrospectively collected 28-day outcome data on patients admitted to Sheffield Teaching Hospitals NHS Foundation Trust, UK, between 5 March and 15 April 2020, with a positive SARS-CoV-2 polymerase chain reaction (PCR) and PCT within 48 hours of diagnosis. PCT was considered negative if ≤ 0.25 ng/ml and positive if > 0.25 ng/ml. Primary outcomes included antibiotic consumption, mortality, intensive care admission and length of hospital stay.

Results. 368 patients met the inclusion criteria; 218 (59%) had a negative PCT and 150 (41%) positive. At 48 hours post-diagnosis, 73 (33%) of those with a negative PCT were receiving antimicrobials compared to 126 (84%) with a positive PCT ($p < 0.001$), with a corresponding reduction in antimicrobial usage over 28 days (median DDD of 3.0 vs 6.8 ($p < 0.001$); median DOT 2 vs 5 days ($p < 0.001$) between the negative and positive PCT groups.) In the negative PCT group, there were fewer deaths (62 (28%) vs. 54 (36%), ($p = 0.021$)) and critical care admissions (19 (9%) vs. 28 (19%), ($p = 0.007$)) than in the positive PCT group. Median length of hospital stay was 8.7 and 9 days in the negative and positive PCT groups respectively.

Conclusions. Procalcitonin is a valuable tool in the assessment of patients with SARS-CoV-2 infection, safely reducing the potential burden of unnecessary antibiotic usage.

BACKGROUND

In patients with COVID-19, the presentation of fever, tachypnoea and hypoxia, together with lung infiltrates on chest imaging and a frequent rise in biomarkers such as C-reactive protein (CRP) [1] presents a challenge to rational use of antimicrobials, as it is difficult to confidently identify or exclude bacterial co-infection. Rates of true bacterial co-infection are estimated to be only 7 to 14% [2-4]. Despite this, the International Severe Acute Respiratory and emerging Infections Consortium (ISARIC) World Health Organization (WHO) Clinical Characterisation Protocol UK (CCP-UK) study has shown that over 80% of patients with COVID-19 receive antibiotic treatment [5]. The Surviving Sepsis Campaign recommends empiric antibacterial therapy in its guidelines for the management of COVID-19 in critically ill adults [6] and the National Institutes of Health treatment guidelines suggest that, in the absence of evidence to the contrary, some expert clinicians advise administration of broad spectrum antimicrobials to all patients with moderate or severe hypoxia [7]. Unnecessary antibiotic usage could result in prolonged inpatient stay and adverse effects and optimising antibiotic use is part of national and global efforts to reduce the spread of antimicrobial resistance [8, 9]. Strategies to accurately identify patients with COVID-19 who do not have bacterial co-infection are urgently required [10]. Recent National Institute for Health and Care Excellence (NICE) guidance on pneumonia in the context of COVID-19 has recommended further research into the use of procalcitonin (PCT) for this purpose [4]. Furthermore, the co-chairs of the American Thoracic Society and Infectious Diseases Society of America Guideline for Treatment of Adults with Community Acquired Pneumonia (ATS) have endorsed the use of the assay to guide antibiotic usage [11].

Unlike other biomarkers such as CRP, PCT is not thought to be routinely raised in COVID-19 [12-15], although data on its utility in this context are scarce. A recent meta-analysis showed that COVID-19 patients with increased PCT values had a nearly 5-fold higher risk of severe infection, thought to be due to the presence of bacterial co-infection [16]. PCT has been

shown to have a greater impact on antibiotic exposure than standard stewardship strategies alone [17], however this hypothesis remains untested in the setting of COVID-19. We set out to evaluate whether PCT use had an impact on i) antibiotic usage and ii) outcomes in patients with confirmed COVID-19 at a large NHS Foundation Trust Hospital in the United Kingdom (UK).

METHODS

Study Design, Study Site and Population

This retrospective observational study was undertaken at two sites of Sheffield Teaching Hospitals NHS Foundation Trust (STHNFT; Royal Hallamshire Hospital and Northern General Hospital) with a combined total of 1700 beds. Patients diagnosed between 5 March and 15 April 2020 were included in the study, allowing assessment of 28-day outcome in all patients by the time of analysis. Those diagnosed prior to 5th March were excluded as at that stage COVID-19 was managed as a high consequence infectious disease and patients were admitted regardless of symptom severity, making the group unrepresentative of those admitted later in the epidemic. The enrolment end date of 15th April was before mandatory SARS-CoV-2 screening of all patients admitted to hospital was introduced.

Eligible patients were aged ≥ 18 years old, admitted to STHNFT, with both a positive SARS-CoV-2 reverse-transcriptase polymerase chain reaction (RT-PCR) result on nose and/or throat swabs and/or deep respiratory samples, and a PCT assay undertaken within 48 hours of collection of the SARS-CoV-2 sample. RT-PCR was performed using an in-house assay targeting E and RdRP genes [18]. Patients with both community and nosocomial acquisition of COVID-19 were included. STHNFT guidelines recommended that antibiotics could be withheld in COVID-19 patients with a PCT value of ≤ 0.25 ng/ml unless felt necessary by a senior clinician, as concomitant bacterial infection is unlikely in such patients [19].

The study was granted approval by the STHNFT Clinical Effectiveness Unit (Ref: 9863)

Data Collection and Outcomes

Demographic and clinical characteristics of patients were drawn from existing laboratory, pharmacy and clinical databases and from examination of physical and electronic patient notes. Data were entered into an electronic case report form (Access 2010, Microsoft, Redmond, WA, USA) including age, sex, ethnicity, height, weight, comorbidities, and antibiotic allergies.

28-day outcome was recorded as discharged, still in hospital or died. Data on readmissions was also collected and the duration of readmissions up to day 28 was incorporated into length of stay data for each patient. Adverse events within the 28 days of follow up were recorded including: Hospital-acquired pneumonia/ventilator-associated pneumonia (HAP/VAP), *Clostridioides difficile* infection, Methicillin-resistant *Staphylococcus aureus* (MRSA) acquisition and isolation of an extended-spectrum beta-lactamase (ESBL) or AmpC beta-lactamase producing organism from a clinical sample. HAP/VAP was defined as commencement of a new antibacterial agent for a presumed chest source at least 48 hours after COVID-19 diagnosis, in conjunction with either new elevation of white blood cell count or neutrophils or positive sputum culture for an organism other than low virulence oral flora. This definition was used as other components of the Infectious Diseases Society of America (IDSA)/ American Thoracic Society (ATS) definition of HAP/VAP (new lung infiltrates, fever and decline in oxygenation) would be difficult to discern in the context of COVID-19 [20].

Antibiotic usage was recorded for the 28-day follow up period including antibiotic agent, duration, and WHO defined daily doses (DDD). Where different DDDs are defined for oral and parenteral preparations, the parenteral figure was used for calculations to avoid inappropriate weighting by route of administration for some commonly used agents (e.g. clarithromycin) which would not be relevant from a stewardship perspective [21]. Prescribing

rates were calculated using DDD/evaluable day for which data of patients who died during the 28-day follow up period were censored from the date of death. Days of treatment (DOT) were defined as the number of days in the 28-day period for which antibiotics were prescribed.

Statistical Analysis:

All values from patients meeting eligibility criteria were summarised using the most appropriate form, either using frequency/percentages, or medians with IQR (Inter-Quartile Range). In the scenario where there are multiple zeros values, and the IQR becomes uninformative with values of 0.00 to 0.00, the 10th and 90th centile are reported instead. Differences between demographics were analysed with the suitable significance test, depending on whether parametric assumptions were met as is detailed in the tables. To investigate the relationship between PCT positivity and total DDD, antibiotic receipt at 48 hours post-diagnosis and meropenem prescription, linear and logistic regression models were explored adjusting for demographic confounders (age, sex, ethnicity and comorbidities). Regression model assumptions were examined, and appropriate adjustments made. All p-values presented were two-sided, and estimates provided with a 95% confidence interval (CI). All statistical analyses were performed in Stata version 16.1 (StataCorp 2019. Stata Statistical Software: Release 16. College Station, TX: StataCorp LLC.)

RESULTS

Study Population

A total of 368 patients met the eligibility criteria and were included in the analysis; overall 60% were male, with a median age of 75. Of these, 218 (59%) had a PCT level of ≤ 0.25 (negative) and 150 (41%) had a level of > 0.25 (positive). Patient demographics and

comorbidities stratified by PCT results are available in Table 1. There was no significant difference in demographics between the two groups in terms of age, sex, BMI or ethnicity. Comorbidities between the two groups were also similarly distributed with the exception of malignancy, which was more common in the PCT negative group. There were no pregnant women in the cohort.

Compliance with Guideline

Of those patients with a negative PCT, 73 (33%) were on antibiotics 48 hours after their COVID-19 diagnosis compared to 126 (84%) with a positive PCT ($p < 0.001$) suggesting good compliance with the guideline (Table 2).

Antibiotic Usage

Data on total DDD of antibiotics received in the 28-day follow-up period and DDD per evaluable day are presented in Table 2 and Figure 2. Patients with a negative PCT received significantly fewer DDDs of antibiotics (both total and per evaluable day) than those with positive PCT with a median DDD of 3.0 vs 6.8 ($p < 0.001$). Due to the log-normal distribution of total DDD, a log transformation was performed on the values (after adding the smallest non-zero value of 0.17 to ensure patients with a total DDD of zero were included). Therefore, a log-linear model was computed in order to explore the relationship with PCT positivity after adjusting for demographic confounders (comorbidities, age, sex, ethnicity) to ensure regression assumptions were met. A statistically significant relationship between PCT and total DDD remained after accounting for these confounders; on average a person with $PCT > 0.25$ had almost three times as many DDDs of antibiotics compared to those ≤ 0.25 (coefficient 2.72, 95%CI: 2.03, 3.62, $p < 0.001$) (Supplementary Table 1).

Patient 28-Day Outcomes

Over the 28-day follow-up period, 116 (32%) of the included patients died, 229 (62%) were discharged and 23 (6%) were still in hospital. Median length of stay was 8.35 days. 47 (13%)

were admitted to intensive care, and of these, 32 (68%) were intubated and ventilated. The PCT, age and 28-day mortality distribution of the patients are illustrated graphically in Figure 1. In the PCT negative group, 62 (28%) patients died compared to 54 (36%) of those with a positive PCT ($p=0.021$), and 19 (9%) were admitted to ITU, compared with 28 (19%) of the positive PCT group ($p=0.007$); Table 2.

Meropenem was the only carbapenem used in the study population. With specific reference to meropenem consumption, positive PCT was associated with a 3-fold increase in the odds of receiving any meropenem during the course of the admission (OR= 3.16, 95% CI: 1.50, 6.65, $p=0.002$) after adjusting for demographic confounders (Supplementary Table 2). There was also a statistically significant association between receipt of antibiotics at 48 hours after COVID-19 diagnosis and receipt of meropenem (OR=3.63, 95% CI: 1.53,8.63, $p=0.003$). (Supplementary Table 3).

Data on the potential adverse consequences of antibiotic usage are presented in Table 2.

With the exception of hospital or ventilator associated pneumonia, adverse events were all uncommon and none were significantly different between PCT positive and negative groups.

DISCUSSION

This observational study supports the hypothesis that implementation of a local guideline advising against the use of antibiotics for patients with confirmed COVID-19 and a PCT level ≤ 0.25 , leads to reduced antibiotic consumption without negative impact on patient 28-day outcome. 28-day mortality figures in this study (28% PCT ≤ 0.25 , 36% PCT > 0.25) are similar to data published by the ISARIC consortium, the largest COVID-19 patient registry in the UK, in which 7080 of 19983 (35.4%) patients for whom outcome data was available died [5]. To our knowledge, this is the first study reporting data from the use of PCT as an antimicrobial stewardship tool in patients with COVID-19 and supports its use in this context.

Previous studies have demonstrated that procalcitonin-guided therapy in lower respiratory tract infections substantially reduces antibiotic use without compromising outcome [22-24], including in the critically ill [25]. Although some studies have excluded immunocompromised patients when evaluating PCT, others have shown that a rise in the biomarker correlates with bacterial infection [26, 27]. Drawbacks of PCT-guided therapy include the potential for false negative results in localised infection such as empyema, in atypical infection – and in the context of renal replacement therapy [28, 29]. As it may take 24-48 hours for PCT to reach its peak, false negatives may be seen if samples are taken early in the course of infection [30, 31]. PCT levels also fall by 50% every 24-36 hours [31] and false negatives may occur in patients due to resolution of infection. It is important, therefore, that interpretation of PCT is made in the context of other laboratory and clinical findings [17].

PCT results can be obtained rapidly from a readily obtained sample. This presents a major advantage over respiratory tract culture results, which are challenged by the inability to obtain adequate sample, slower turnaround times and insensitivity. Sputum culture has been shown to reveal a definitive diagnosis in less than 20% of cases of community-acquired pneumonia [32]. Clinical uncertainty, combined with this diagnostic insensitivity, further compromised following initiation of antibiotics, has the potential to provoke unnecessary antibiotic usage and consequent short- and long-term morbidity in patients without bacterial infection.

The adopted PCT threshold of 0.25 was intentionally conservative and it may be that a higher threshold can be adopted safely, which would lead to a further reduction in antibiotic usage in patients with COVID-19.

This higher mortality seen in the PCT >0.25 group supports those of other authors, demonstrating an association between higher PCT values and severe disease or death [33, 34]. It is possible that higher PCT in these patients reflects bacterial superinfection, which increases the production of PCT from non-thyroidal sources through the interplay of interleukin (IL)-1 β , tumor necrosis factor (TNF)- α and IL-6, whereas viral infections result in a rise in interferon (INF)- γ which inhibits PCT synthesis [16]. It is also possible that PCT is raised in severe COVID-19 disease independent of bacterial infection, which would open the possibility of further improvements in antimicrobial stewardship.

Many of the advances in medicine that have occurred over the past 75 years have been made possible because of the effectiveness of antibiotics to prevent or treat infective complications. Antimicrobial resistance (AMR) poses a major threat to human health and, if unchecked, it is estimated that 10 million deaths may be attributable to AMR by 2050. Reducing the unnecessary use of antibiotics is a key component to mitigating this risk. The risk of severe COVID-19 disease increases with age and the elderly are also at greatest risk of the adverse consequences of excessive antibiotic use [35].

Numerous metrics exist for the measurement of antibiotic consumption, each with their own strengths and weaknesses [21]. World Health Organisation Defined Daily Doses have the advantage that they are standardised and, at institution level, can be assessed from procurement records without recourse to individual prescribing data. They do, however, have several drawbacks. They do not factor in exposure equivalent dose adjustments such as those that occur in renal or liver dysfunction, and combination therapy results in elevation of the DDDs received which may correlate poorly with relative effects on host ecology and adverse consequences of therapy. Finally, they are based on usual prescribing patterns and

therefore markedly different DDD may apply to different settings or routes of administration of the same drug [36]. This latter weakness was addressed in our study through the use of the parenteral DDD for those drugs where there was a difference. We also assessed days of treatment (DOT), which may be a more relevant metric from a stewardship perspective and again this was found to be significantly lower in the negative PCT group.

We also demonstrated a 3-fold increase in the odds of carbapenem prescription in those with a positive PCT. This is important in the context of the increasing global incidence of carbapenemase-producing Enterobacteriales and is likely to be a direct consequence of increased initial antibiotic usage and a concern that this had induced resistance leading to prescription of broader spectrum agents for any subsequent indication and despite the fact that isolation of ESBL or AmpC positive organisms occurred no more frequently in this group. The impact of early antimicrobial therapy on later prescription of broad spectrum agents is supported by the association between antibiotic use at 48 hours and subsequent meropenem use, which was also statistically significant.

The limitations of our study include the fact that it is from a single centre and retrospective in design. However, patients were recruited systematically from the beginning of the epidemic locally until a date which was defined in advance and which preceded the introduction of routine COVID-19 testing of all admissions regardless of symptoms. It is possible that some patients may have been readmitted to other regional hospitals, but this is felt unlikely as the catchment area of STHNFT is well-defined and there is limited geographical overlap with neighbouring trusts.

CONCLUSIONS

This study has demonstrated that procalcitonin level can be a useful tool in the assessment of bacterial co-infection of COVID-19 patients, and can safely reduce unnecessary antibiotic usage and its associated adverse consequences.

ACKNOWLEDGEMENTS

The authors would like to thank Dr Eirini Koutoumanou of UCL for discussion around the transformation analysis.

REFERENCES

1. Brandon Michael Henry MHSdO, Stefanie Benoit, Mario Plebani and Giuseppe Lippi. Hematologic, biochemical and immune biomarker abnormalities associated with severe illness and mortality in coronavirus disease 2019 (COVID-19): a meta-analysis. *Clinical Chemistry and Laboratory Medicine* **2020**; Ahead of print.
2. Louise Lansbury BL, Vadsala Baskaran, Wei Shen Lim. Co-infections in people with COVID-19: a systematic review and meta-analysis. *Journal of Infection* **2020**; (2).
3. Timothy M Rawson LSPM, Nina Zhu, Nishanthi Ranganathan, Keira Skolimowska, Mark Gilchrist, Giovanni Satta, Graham Cooke, Alison Holmes. Bacterial and fungal co-infection in individuals with coronavirus: A rapid review to support COVID-19 antimicrobial prescribing. *Clinical Infectious Diseases* **2020**.
4. NICE. COVID-19 rapid guideline: antibiotics for pneumonia in adults in hospital. NICE guideline [NG173], **2020**.
5. Docherty AB, Harrison EM, Green CA, et al. Features of 20 133 UK patients in hospital with covid-19 using the ISARIC WHO Clinical Characterisation Protocol: prospective observational cohort study. *BMJ* **2020**; 369: m1985.
6. Waleed Alhazzani MHM, Yaseen M. Arabi, Mark Loeb, Michelle Ng Gong, Eddy, Fan SO, Mitchell M. Levy, Lennie Derde, Amy Dzierba, Bin Du, Michael Aboodi,, Hannah Wunsch MC, Younsuck Koh, Daniel S. Chertow, Kathryn Maitland, Fayez, et al. Surviving Sepsis Campaign: Guidelines on the Management of Critically Ill Adults with Coronavirus Disease 2019 (COVID-19). *Journals Intensive Care Medicine (ICM) and Critical Care Medicine (CCM)* **2020**; Un-edited accepted proof.
7. Coronavirus Disease 2019 (COVID-19) Treatment Guidelines. COVID-19 Treatment Guidelines Panel, National Institutes of Health, **2020** 15/06/2020.
8. HM Government. Tackling antimicrobial resistance 2019-2024: The UK's five-year national action plan. **2019**.
9. World Health Organization. Global action plan on antimicrobial resistance. **2015**.
10. RA Seaton on behalf of Scottish Antimicrobial Prescribing Group. Advice to Antimicrobial Management Teams (AMTs) on antimicrobial prescribing in suspected lower respiratory tract infections in the context of the COVID-19 pandemic **2020**.

11. Joshua Metlay GW. Treatment of Community-Acquired Pneumonia During the Coronavirus Disease 2019 (COVID-19) Pandemic. *Annals of Internal Medicine* **2020**.
12. Fang Liu LL, MengDa Xu, Juan Wu, Ding Luo, YuSi Zhu, BiXi Li, XiaoYang Song, Xiang Zhou. Prognostic value of interleukin-6, C-reactive protein, and procalcitonin in patients with COVID-19. *Journal of Clinical Virology* **2020**; 127.
13. Huang C, Wang Y, Li X, et al. Clinical features of patients infected with 2019 novel coronavirus in Wuhan, China. *Lancet* **2020**; 395(10223): 497-506.
14. Nanshan Chen MZ, Xuan Dong, Jieming Qu, Fengyun Gong, Yang Han, Yang Qiu, Jingli Wang, Ying Liu, Yuan Wei, Jia'an Xia, Ting Yu, Xinxin Zhang, Li Zhang. Epidemiological and clinical characteristics of 99 cases of 2019 novel coronavirus pneumonia in Wuhan, China: a descriptive study. *The Lancet* **2020**; 395(10223): 507-13.
15. Wang D, Hu B, Hu C, et al. Clinical Characteristics of 138 Hospitalized Patients With 2019 Novel Coronavirus-Infected Pneumonia in Wuhan, China. *Jama* **2020**; 323(11): 1061-9.
16. Lippi G, Plebani M. Procalcitonin in patients with severe coronavirus disease 2019 (COVID-19): A meta-analysis. *Clin Chim Acta* **2020**; 505: 190-1.
17. Broyles MR. Impact of Procalcitonin-Guided Antibiotic Management on Antibiotic Exposure and Outcomes: Real-world Evidence. *Open Forum Infect Dis* **2017**; 4(4): ofx213.
18. Colton H, Ankcorn M, Yavuz M, et al. Improved sensitivity using a dual target, E and RdRp assay for the diagnosis of SARS-CoV-2 infection: Experience at a large NHS Foundation Trust in the UK. *J Infect* **2020**.
19. Schuetz P, Batschwaroff M, Dusemund F, et al. Effectiveness of a procalcitonin algorithm to guide antibiotic therapy in respiratory tract infections outside of study conditions: a post-study survey. *Eur J Clin Microbiol Infect Dis* **2010**; 29(3): 269-77.
20. Guidelines for the Management of Adults with Hospital-acquired, Ventilator-associated, and Healthcare-associated Pneumonia. *American Journal of Respiratory and Critical Care Medicine* **2005**; 171(4): 388-416.
21. Stanic Benic M, Milanic R, Monnier AA, et al. Metrics for quantifying antibiotic use in the hospital setting: results from a systematic review and international multidisciplinary consensus procedure. *J Antimicrob Chemother* **2018**; 73(suppl_6): vi50-vi8.
22. Schuetz P, Christ-Crain M, Thomann R, et al. Effect of procalcitonin-based guidelines vs standard guidelines on antibiotic use in lower respiratory tract infections: the ProHOSP randomized controlled trial. *Jama* **2009**; 302(10): 1059-66.
23. Schuetz P, Wirz Y, Sager R, et al. Procalcitonin to initiate or discontinue antibiotics in acute respiratory tract infections. *Cochrane Database Syst Rev* **2017**; 10(10): Cd007498.
24. Christ-Crain M, Jaccard-Stolz D, Bingisser R, et al. Effect of procalcitonin-guided treatment on antibiotic use and outcome in lower respiratory tract infections: cluster-randomised, single-blinded intervention trial. *Lancet* **2004**; 363(9409): 600-7.
25. de Jong E, van Oers JA, Beishuizen A, et al. Efficacy and safety of procalcitonin guidance in reducing the duration of antibiotic treatment in critically ill patients: a randomised, controlled, open-label trial. *Lancet Infect Dis* **2016**; 16(7): 819-27.
26. Giamarellou H, Giamarellou H, Grecka P, Poulakou G, Anargyrou K, Katsilambros N, Giamarellou H. Assessment of Procalcitonin as a Diagnostic Marker of Underlying Infection in Patients with Febrile Neutropenia. *Clinical Infectious Diseases* **2001**; 32(12): 1718-25.
27. von Lilienfeld-Toal M, Dietrich MP, Glasmacher A, et al. Markers of bacteremia in febrile neutropenic patients with hematological malignancies: procalcitonin and IL-6 are more reliable than C-reactive protein. *Eur J Clin Microbiol Infect Dis* **2004**; 23(7): 539-44.

28. Dahaba AA, Elawady GA, Rehak PH, List WF. Procalcitonin and Proinflammatory Cytokine Clearance during Continuous Venovenous Haemofiltration in Septic Patients. *Anaesthesia and Intensive Care* **2002**; 30(3): 269-74.
29. Honore PM, De Bels D, Attou R, Redant S, Kashani K. The challenge of removal of sepsis markers by continuous hemofiltration. *Critical Care* **2019**; 23(1): 173.
30. Christ-Crain M, Müller B. Procalcitonin in bacterial infections--hype, hope, more or less? *Swiss Med Wkly* **2005**; 135(31-32): 451-60.
31. Saleem A. Serum Procalcitonin in Lower Respiratory Tract Infections in Adult Patients. *British Journal of Medical Practitioners* **2019**; 12.
32. García-Vázquez E, Marcos MA, Mensa J, et al. Assessment of the usefulness of sputum culture for diagnosis of community-acquired pneumonia using the PORT predictive scoring system. *Arch Intern Med* **2004**; 164(16): 1807-11.
33. Zheng Z, Peng F, Xu B, et al. Risk factors of critical & mortal COVID-19 cases: A systematic literature review and meta-analysis. *J Infect* **2020**.
34. Zhou F, Yu T, Du R, et al. Clinical course and risk factors for mortality of adult inpatients with COVID-19 in Wuhan, China: a retrospective cohort study. *The Lancet* **2020**; 395(10229): 1054-62.
35. Beckett CL, Harbarth S, Huttner B. Special considerations of antibiotic prescription in the geriatric population. *Clin Microbiol Infect* **2015**; 21(1): 3-9.
36. Polk RE, Fox C, Mahoney A, Letcavage J, MacDougall C. Measurement of adult antibacterial drug use in 130 US hospitals: comparison of defined daily dose and days of therapy. *Clin Infect Dis* **2007**; 44(5): 664-70.

Table 1. Baseline demographics details of patients stratified by procalcitonin level

Procalcitonin level (ng/ml)		≤0.25	>0.25	Total	p-value
Total No (%)		218 (59)	150 (41)	368 (100)	
Age at admission					
Median (IQR)		75 (61-84)	74 (60-82)	75 (60-83)	p=0.417 ^s
Age	18-39	13 (6)	9 (6)	22	p=0.849 [#]
	40-49	13 (6)	6 (4)	19	
	50-59	26 (12)	22 (15)	48	
	60-69	32 (15)	27 (18)	59	
	70-79	51 (23)	33 (22)	84	
	80+	83 (38)	53 (35)	136	
Sex	Male	123 (56)	98 (65)	221	p=0.086 [*]
	Female	95 (44)	52 (35)	147	
BMI (n=330)	<20	16 (8)	9 (7)	25	p=0.885 [*]
	20-25	51 (26)	40 (30)	91	
	25-30	66 (34)	44 (33)	110	
	30+	62 (32)	42 (31)	104	
Ethnicity	White	172 (79)	112 (75)	284	p=0.428 [#]
	Black	13 (6)	13 (9)	26	
	Asian	11 (5)	5 (3)	16	
	Mixed	1 (0)	1 (1)	2	
	Other	3 (1)	3 (2)	6	
	Not stated	11 (5)	14 (9)	25	
	Missing	7 (3)	2 (1)	9	
Any comorbidity	No	38 (17)	31 (21)	69	p=0.435 [*]
	Yes	180 (83)	119 (79)	299	
Hypertension	No	140 (64)	96 (64)	236	p=0.965 [*]
	Yes	78 (36)	54 (36)	132	
Diabetes (1 or 2)	No	154 (71)	110 (73)	264	p=0.573 [*]
	Yes	64 (29)	40 (27)	104	
Cardiovascular disease	No	134 (61)	101 (67)	235	p=0.250 [*]
	Yes	84 (39)	49 (33)	133	
Asthma	No	195 (89)	134 (89)	329	p=0.972 [*]
	Yes	23 (11)	16 (11)	39	
Malignancy	No	183 (84)	140 (93)	323	p=0.007 [*]
	Yes	35 (16)	10 (7)	45	
Immunosuppressed	No	199 (91)	136 (91)	335	p=0.839 [*]

	Yes	19 (9)	14 (9)	33	
Chronic lung disease	No	177 (81)	122 (81)	299	p=0.973*
	Yes	41 (19)	28 (19)	69	
Chronic renal impairment	No	192 (88)	125 (83)	317	p=0.196*
	Yes	26 (12)	25 (17)	51	
Pregnancy	No	218 (100)	150 (100)	368	N/A
	Yes	0 (0)	0 (0)	0	

Fishers Exact test; \$ Mann-Whitney U test; * Chi-square test; IQR= Inter-Quartile Range; BMI= Body Mass

Index

Table 2. Antibiotic use and 28 day outcomes in patients stratified by procalcitonin level

Procalcitonin level (ng/ml)		≤0.25	>0.25	Total	p-value
Total (%)		218 (59)	150 (41)	368 (100)	
Clinical Outcomes					
28 day outcome	Died	62 (28)	54 (36)	116 (32)	p=0.021 [#]
	Discharged	147 (67)	82 (55)	229 (62)	
	Still in hospital	9 (4)	14 (9)	23 (6)	
Intubated	No	207 (95)	129 (86)	336 (91)	p=0.004 [#]
	Yes	11 (5)	21 (14)	32 (9)	
Admitted to ITU	No	199 (91)	122 (81)	321 (87)	p=0.007 [#]
	Yes	19 (9)	28 (19)	47 (13)	
Length of stay					
Median (IQR)		8.7 (4.9-15.3)	9.0 (5.9-18.8)	8.9 (5.3-16.1)	p=0.054 ^{\$}
Antibiotic outcomes					
Total DDD received					
Median (IQR)		3.0 (0.3-6.3)	6.8 (3.6-10.4)	4.2 (1.3-8.3)	p<0.001 ^{\$}
Total Antibiotic DOT					
Median (IQR)		2 (0-5)	5 (4-9)	5 (1-7)	p<0.001 ^{\$}
DDD received/evaluable day					
Median (IQR)		0.14 (0.02-0.31)	0.37 (0.19-0.76)	0.23 (0.08-0.48)	p<0.001 ^{\$}
Days of treatment per evaluable day to day 28					
Median (IQR)		0.11 (0.00-0.25)	0.32 (0.18-0.60)	0.18 (0.04-0.39)	p<0.001 ^{\$}
Infective complications					
HAP/VAP	No	190 (87)	127 (85)	317	p=0.497 [*]
	Yes	28 (13)	23 (15)	51	
ESBL/AmpC isolation	No	213 (98)	148 (99)	361	p=0.705 [#]
	Yes	5 (2)	2 (1)	7	
MRSA	No	218 (100)	149 (99)	367	p=0.408 [#]
	Yes	0 (0)	1 (1)	1	
CDAD	Yes	0(0)	0(0)	0(0)	

Fishers Exact test; \$ Mann-Whitney U test; * Chi-Square test; DDD= Defined Daily Dose; DOT=Days Of Treatment; IQR= Inter-Quartile Range; ITU= Intensive Treatment Unit; HAP= Hospital-Acquired Pneumonia;

VAP= Ventilator-Associated Pneumonia; ESBL= Extended Spectrum Beta Lactamase; MRSA= Methicillin-Resistant *Staphylococcus aureus*. CDAD= *Clostridioides difficile* associated disease.

Figure 1: Mortality outcomes for positive and negative PCT groups stratified by age

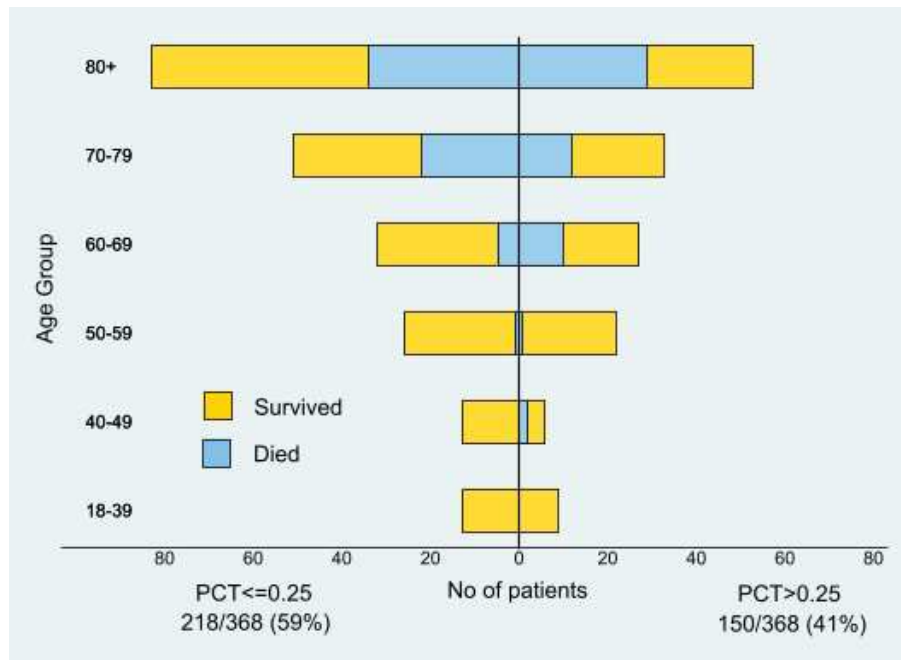


Figure 2. Antibiotics consumption as demonstrated by average DDD & average meropenem DDD between positive and negative PCT groups, stratified by age

