

The isothermal evolution of a shock-filament interaction

K. J. A. Goldsmith and J. M. Pittard[★]

School of Physics and Astronomy, University of Leeds, Woodhouse Lane, Leeds LS2 9JT, UK

Accepted 2019 November 18. Received 2019 October 18; in original form 2019 February 25

ABSTRACT

Studies of filamentary structures that are prevalent throughout the interstellar medium are of great significance to a number of astrophysical fields. Here, we present 3D hydrodynamic simulations of shock-filament interactions where the equation of state has been softened to become almost isothermal. We investigate the effect of such an isothermal regime on the interaction (where both the shock and filament are isothermal), and we examine how the nature of the interaction changes when the orientation of the filament, the shock Mach number, and the filament density contrast are varied. We find that only sideways-oriented filaments with a density contrast of 10^2 form a three-rolled structure, dissimilar to the results of a previous study. Moreover, the angle of orientation of the filament plays a large role in the evolution of the filament morphology: the greater the angle of orientation, the longer and less turbulent the wake. Turbulent stripping of filament material leading to fragmentation of the core occurs in most filaments; however, filaments orientated at an angle of 85° to the shock front do not fragment and are longer lived. In addition, values of the drag time are influenced by the filament length, with longer filaments being accelerated faster than shorter ones. Furthermore, filaments in an isothermal regime exhibit faster acceleration than those struck by an adiabatic shock. Finally, we find that the drag and mixing times of the filament increase as the angle of orientation of the filament is increased.

Key words: hydrodynamics – shock waves – methods: numerical – ISM: clouds – ISM: kinematics and dynamics.

1 INTRODUCTION

Filamentary structures are found ubiquitously in the interstellar medium (ISM). Some filaments are known to collapse under gravity and fragment into star-forming cores. Recent observational studies have further shown that a large number of pre-stellar cores are found within dense filaments (André et al. 2010; Arzoumanian et al. 2011; Roy et al. 2015), with some filaments showing several cores strung out along their length (Schisano et al. 2014; Könyves et al. 2015). In addition, young stellar clusters appear at the intersections of these filaments (Myers 2011; Schneider et al. 2012).

The presence of cores embedded within filaments suggests a relationship between their formation and the fragmentation of the filaments themselves (Schneider & Elmegreen 1979; Larson 1985) and the conditions under which filaments fragment have been probed by various numerical studies (see e.g. Heigl, Burkert & Hacar 2016). Mellema, Kurk & Röttgering (2002) and Fragile et al. (2004) found that radiative clouds tended to breakup into clumps rather than become mixed into the background medium, since radiative or isothermal regimes can lead to milder cloud destruction. Indeed, radiative cooling can be rapid enough that

almost all of the cloud mass is compressed into these long-lived clumps which would be likely to go on to collapse and form stars.

Isothermal filaments, and particularly their fragmentation, have been well studied on a theoretical basis in previous years. However, such studies have tended to assume an isothermal filament of infinite length (i.e. an isothermal cylinder, as proposed by Ostriker 1964), which is unrealistic (see Chira et al. 2018). The assumption of isothermality on its own, however, may be reasonable under certain circumstances (see e.g. Heigl et al. 2016), though some studies have found that observed filament properties are better described by even softer equations of state (e.g. Toci & Galli 2015; Di Cintio, Gupta & Casetti 2018; Hosseinirad et al. 2018).

Our previous papers, Pittard & Goldsmith (2016) and Goldsmith & Pittard (2016), investigated the hydrodynamic and magnetohydrodynamic adiabatic interaction between a shock and a filament. Here, we extend the hydrodynamic study into the isothermal regime in order to understand the effects of strong radiative losses on the interaction. In this study, all calculations are performed for a quasi-isothermal gas ($\gamma = 1.01$). Our calculations are scale-free and are applicable to a broad range of scenarios.

The outline of this paper is as follows: in Section 2 we define the isothermal shock-filament problem and review the relevant literature. Section 3 introduces the numerical method and describes

[★] E-mail: J.M.Pittard@leeds.ac.uk

the initial conditions, whilst in Section 4 we present our results. Section 5 provides a summary of our results and a conclusion. A resolution study is presented in Appendix A.

2 PROBLEM DEFINITION

In this study, we consider the most basic scenario of a shock striking a filament. The simulated cloud is an idealized non-magnetized filament comprising a central cylindrical core of length lr_c (where r_c is the filament radius) and hemispherical caps at each end. Thus, a cloud with $l = 0$ would be a spherical cloud. The total length of the filament is given by $(l + 2)r_c$, and the ratio of the lengths of the major and minor axes is given by $(l + 2)/2$. We vary the aspect ratio and orientation (denoted by the angle, θ ,¹ between the leading surface of the shock and the filament's major axis) of the filament in order to investigate how such changes might alter the interaction. Although this is clearly an idealized set-up, it is suitable for our purposes and allows changes to the interaction to be monitored as the shock Mach number, M , cloud density contrast, χ , l , and θ are varied.

The filament is initially in pressure equilibrium with its surroundings and is assumed to have smooth edges over about 10 per cent of its radius. We adopt the density profile given in Pittard et al. (2009) with $p_1 = 10$, in line with our previous hydrodynamical (HD) shock-filament study (Pittard & Goldsmith 2016). The presence of a soft edge to the filament is expected to retard the formation of HD instabilities (see e.g. Nakamura et al. 2006; Pittard & Parkin 2016). HD instabilities are expected to be further suppressed by the use of a quasi-isothermal equation of state.

This work comprises a purely hydrodynamic study, ignoring the effects of thermal conduction, cooling, magnetic fields, and self-gravity. All calculations are performed using a softened equation of state ($\gamma = 1.01$) in order to approximate an isothermal interaction (i.e. both the shock and the filament are isothermal).

2.1 Previous work

Numerical studies investigating the idealized problem of an adiabatic shock or wind interacting with a cloud date back to the 1970s. Since then, more realistic scenarios involving thermal conduction (e.g. Orlando et al. 2008), turbulence (e.g. Pittard et al. 2009; Pittard, Hartquist & Falle 2010; Pittard & Parkin 2016), and magnetic fields (e.g. Mac Low et al. 1994; Shin et al. 2008), have been published. In particular, numerical studies of shock-cloud interactions which have included radiative cooling routines include Mellema, Kurk & Röttgering (2002), Fragile et al. (2004, 2005), Orlando et al. (2005), Cooper et al. (2008, 2009), Yirak, Frank & Cunningham (2010), Van Loo, Falle & Hartquist (2010), Li, Frank & Blackman (2013), and Johansson & Ziegler (2013).

Whilst a full radiative cooling model would provide more realistic results that are directly applicable to observations, such models lose their generality by introducing a physical scale (the cooling length) into the problem. Instead, softening the equation of state so that it is isothermal ($\gamma = 1$) or quasi-isothermal mimics the effects of strong cooling in the ISM whilst keeping the calculations scale-free. Several studies have explored the effect of a softened equation of state on the interaction between a shock or wind and a cloud. Klein, McKee & Colella (1994) briefly explored a 2D

shock-cloud interaction using $\gamma = 1.1$ (for the cloud only) and found that a softened equation of state led to greater compression of the cloud and reduced drag. In addition, such clouds survived for longer due to the higher density of the shocked cloud. Li et al. (2003) explored self-gravitating turbulent clouds over a range of values for γ and found that the ability of interstellar gas clouds to fragment under the action of self-gravity decreased with increasing γ in the range $0.2 < \gamma < 1.4$. Larson (2005), in a review paper, noted that the above result had particular importance for filamentary clouds, and that a value of $\gamma = 1$ denoted a critical value for filament collapse. Nakamura et al. (2006), in their 3D study in which they compared adiabatic and isothermal interactions, used $\gamma = 1.1$ for both the cloud and the intercloud gas. Their results supported those of Klein et al. (1994) and underlined the fact that the cloud experienced much milder destruction by HD instabilities. Finally, Banda-Barragán et al. (2016, 2018, 2019) briefly explored the effect of a quasi-isothermal equation of state ($\gamma = 1.1$) on a magnetohydrodynamic (MHD) wind-cloud interaction and noted that an isothermal filament survived for longer than an adiabatic one. Other studies to have utilized an isothermal equation of state for the cloud include Raga, Steffen & González (2005) and Pittard et al. (2005).

Although there is now a comprehensive, and growing, body of work concerning shock-cloud and wind-cloud interactions using spherical clouds (see Pittard, Hartquist & Falle 2010; Pittard & Parkin 2016; Goldsmith & Pittard 2017 and Banda-Barragán et al. 2019 for a brief overview), there remains a paucity of work in the current literature concerning interactions where the cloud is non-spherical. HD simulations with prolate clouds were performed by Klein et al. (1994) and Xu & Stone (1995), whilst Pittard & Goldsmith (2016) investigated idealized filaments. In addition, Goldsmith & Pittard (2016) studied shock-filament interactions in a magnetized medium. With the exception of Klein et al. (1994), these studies emphasized the influence on the interaction of the alignment or orientation of the cloud with respect to the shock normal. Furthermore, Goldsmith & Pittard (2016) noted that the length of the filament was not as important to the interaction as the filament's orientation. Other studies (e.g. Cooper et al. 2009; Banda-Barragán et al. 2016, 2018) that have investigated the formation and evolution of filamentary clouds have started from the basis of a spherical cloud (though Cooper et al. 2009 also simulated a fractal cloud).

To our knowledge, there exists no other numerical study of a shock striking a filament in a non-magnetized medium using a softened equation of state. This work, therefore, extends the study by Pittard & Goldsmith (2016) into the quasi-isothermal regime.

2.2 Astrophysical context

There are many situations where shock-filament interactions occur. These include cases such as a molecular cloud/filament hit by an SNR (e.g. Jiang et al. 2010; Vink 2012; Zhou et al. 2014; Slane et al. 2015, and references therein) or by a passing shock in the ISM, a smaller filament in a molecular cloud hit by a shock resulting from nearby stellar feedback (e.g. a shock driven by an ionization front, a shock driven by a wind-blown bubble, or a shock resulting from a supernova explosion; e.g. McEwen, Pihlström & Sjouwerman 2016), high-velocity clouds interacting with galaxy haloes (e.g. Putman, Peek & Joung 2012; Grønnow et al. 2017), and a molecular cloud in a multiphase galactic wind that is interacting with faster outflowing material driven either by a stellar or active galactic nucleus activity (e.g. Veilleux, Cecil & Bland-Hawthorn

¹ $\theta = 0^\circ$ presents the filament as sideways-on to the shock, and $\theta = 90^\circ$ presents the filament as end-on to the shock.

2005; Michiyama et al. 2018). In each of these cases the interaction may occur across a wide range of parameter space. For instance, a range of Mach numbers and density contrasts could occur in each situation.

Another issue is that in many of these interactions there will be physics that is not scale-free (e.g. cooling, gravity, etc.). For instance, in the case of a filamentary IRDC that is hit by a shock in the ISM, the cloud is massive and gravity may significantly affect how material is removed from the cloud, perhaps even causing some material to fall back on to the cloud once the shock has passed. Thus, future work which includes additional scale-dependent physics is still needed.

3 THE NUMERICAL SETUP

The computations in this study were performed on a 3D xyz Cartesian grid using the MG adaptive mesh refinement (AMR) HD code. MG solves numerically the Eulerian equations of hydrodynamics for the conservation of mass, momentum, and energy,

$$\frac{\partial \rho}{\partial t} + \nabla \cdot (\rho \mathbf{u}) = 0, \quad (1)$$

$$\frac{\partial \rho \mathbf{u}}{\partial t} + \nabla \cdot (\rho \mathbf{u} \mathbf{u}) + \nabla \mathbf{P} = 0, \quad (2)$$

$$\frac{\partial E}{\partial t} + \nabla \cdot [(E + P)\mathbf{u}] = 0, \quad (3)$$

respectively, where ρ is the mass density, \mathbf{u} is the velocity, P is the thermal pressure, γ is the ratio of specific heat capacities, and

$$E = \frac{P}{\gamma - 1} + \frac{1}{2} \rho \mathbf{u}^2 \quad (4)$$

is the total energy density.

MG uses piecewise linear cell interpolation and solves the Riemann problem at each cell interface in order to determine the conserved fluxes for the time update. The scheme is second-order accurate in space and time. A linear solver is used in most instances, with the code switching to an exact solver where there is a large difference between the two states (Falle 1991).

The two coarsest levels (G^0 and G^1) of the AMR grid cover the entire computational domain, with finer grids being added where needed and removed where they are not. Refinement and derefinement are performed on a cell-by-cell basis and are controlled by the differences in the solutions on the coarser grids at any point in space (see Goldsmith & Pittard 2017 for a more detailed description of the refinement process). Grid level G^0 has a cell width of $4r_c$. The effective spatial resolution of each simulation is taken to be the resolution of the finest grid and is given by R_{cr} , where ‘cr’ is the number of cells per filament semiminor axis in the finest grid, equivalent to the number of cells per cloud radius for a spherical cloud. This effective radius is taken to be the ‘filament radius’. Each of the simulations was performed at an effective resolution of R_{16} , requiring seven grid levels (G^0 to G^6). A resolution study is presented in Appendix A.

The filament is initially centred at the grid origin $(x, y, z) = (0, 0, 0)$ with the planar shock front located at $x = -10$. The shock propagates along the x -axis in the positive x direction. The numerical domain is set so that there is constant inflow from the negative x direction and free inflow/outflow conditions at other boundaries, and is large enough so that the main features of the interaction occur before the shock reaches the downstream boundary of the grid. The grid extent is determined by the values of M , χ , and θ and is $-20 < x < 1500$, $-12 < y < 12$, $-12 < z < 12$ for all simulations. In

this study, we define motion in the direction of shock propagation as ‘axial’ and that perpendicular to this as ‘radial’ or ‘transverse’ (this includes motion in both the y and z directions).

All length scales are measured in units of the filament radius, r_c , where $r_c = 1$, velocities are measured in units of the shock velocity through the ambient medium, v_b , and the unit of density is given as the density of the surrounding pre-shocked gas, ρ_{amb} . For a Mach 3 shock with $\gamma = 1.01$ the post-shock density, pressure, and velocity relative to the pre-shock ambient values and to the shock speed are (in computational units) $\rho_{ps}/\rho_{amb} = 8.7$, $P_{ps}/P_{amb} = 9.1$, and $v_{ps}/v_b = 0.88$, respectively.

3.1 Diagnostics

Various integrated quantities allow the evolution of the filament to be studied (see Klein et al. 1994; Nakamura et al. 2006; Pittard et al. 2009; Goldsmith & Pittard 2016). Averaged quantities, $\langle f \rangle$, are constructed by

$$\langle f \rangle = \frac{1}{m_\beta} \int_{\kappa \geq \beta} \kappa \rho f \, dV, \quad (5)$$

where m_β , the mass identified as being part of the filament, is given by

$$m_\beta = \int_{\kappa \geq \beta} \kappa \rho \, dV. \quad (6)$$

An advected scalar, κ , is used to trace the filament material in the flow, allowing the whole filament along with its denser core to be distinguished from the ambient medium, $\kappa = \rho/(\chi\rho_{amb})$. It has an initial value of 1.0 at the centre of the filament and declines towards the filament edge, reducing to a value of zero for the surrounding ambient material. β is the threshold value, and integrations are only performed over cells where $\kappa \geq \beta$. Setting $\beta = 0.5$ allows the densest regions of the filament and its associated fragments (hereafter subscripted as ‘core’) to be probed, whilst setting $\beta = 2/\chi$ probes the entire filament and its low-density envelope, as well as regions where some filament material is mixed into the ambient flow (hereafter subscripted as ‘cloud’). Note that our meaning of the term ‘core’ differs from the ‘core’-like structures that are understood by the star formation community. In our work it simply refers to dense fragments.

The mass-weighted mean velocity of the filament in each direction ($\langle v_x \rangle$, $\langle v_y \rangle$, $\langle v_z \rangle$) and the velocity dispersions in all three directions, defined as

$$\delta v_x = (\langle v_x^2 \rangle - \langle v_x \rangle^2)^{1/2}, \quad (7)$$

$$\delta v_y = (\langle v_y^2 \rangle - \langle v_y \rangle^2)^{1/2}, \quad (8)$$

$$\delta v_z = (\langle v_z^2 \rangle - \langle v_z \rangle^2)^{1/2}, \quad (9)$$

are followed, as well as the mean density, which is given as

$$\langle \rho \rangle = \frac{m_\beta}{V_\beta}, \quad (10)$$

where V_β is the volume of a region having $\kappa \geq \beta$.

3.2 Dynamical time-scales

Time zero in our calculations is taken to be the time at which the shock is level with the centre of the filament. The characteristic time-scale for a spherical cloud to be crushed by the shocks being driven into it is the so-called ‘cloud-crushing time’ defined by Klein et al. (1994). However, a modified time-scale for prolate clouds to

Table 1. A summary of the shock-filament simulations presented in this work, along with key time-scales. M is the shock Mach number, χ is the density contrast of the filament to the surrounding ambient medium, l defines the length of the filament, and θ defines the angle of orientation of the filament between its major axis and the shock surface (sideways oriented filaments have $\theta = 0^\circ$). v_{ps} is the post-shock flow velocity, and is given in units of v_b . t_{cc} is the cloud-crushing time-scale of Klein et al. (1994), while t_{cs} is the cloud-crushing time-scale for a spherical cloud of equivalent mass introduced by Xu & Stone (1995). Key filament time-scales are additionally noted. † denotes that the true value is unable to be given because the simulation had ended before this point was reached. Note that simulations *m3c2l885*, *m3c3l8s*, and *m10c2l885* were run at a reduced resolution of R_{16} .

Simulation	M	χ	$l (r_c)$	$\theta (^\circ)$	v_{ps}/v_b	t_{cs}/t_{cc}	t_{drag}/t_{cs}	t_{mix}/t_{cs}	t_{life}/t_{cs}
m10c1l8s	10	10	8	Sideways	0.99	1.91	0.61	0.44	—†
m10c2l2s	10	10^2	2	Sideways	0.99	1.36	0.43	0.27	0.50
m10c2l4s	10	10^2	4	Sideways	0.99	1.59	0.36	0.23	0.43
m10c2l8s	10	10^2	8	Sideways	0.99	1.91	0.30	0.19	0.36
m10c2l230	10	10^2	2	30°	0.99	1.35	0.51	0.27	0.66
m10c2l430	10	10^2	4	30°	0.99	1.58	0.43	0.23	0.57
m10c2l830	10	10^2	8	30°	0.99	1.91	0.36	0.19	0.47
m10c2l860	10	10^2	8	60°	0.99	1.91	0.71	0.41	1.54
m10c2l885	10	10^2	8	85°	0.99	1.91	1.53	0.98	4.93
m3c1l8s	3	10	8	Sideways	0.88	1.91	0.72	7.06	23.8
m3c2l2s	3	10^2	2	Sideways	0.88	1.36	2.06	3.14	6.54
m3c2l4s	3	10^2	4	Sideways	0.88	1.59	1.76	3.04	6.27
m3c2l8s	3	10^2	8	Sideways	0.88	1.91	1.46	2.82	5.92
m3c2l230	3	10^2	2	30°	0.88	1.36	3.23	4.14	7.07
m3c2l430	3	10^2	4	30°	0.88	1.59	2.69	3.61	6.41
m3c2l830	3	10^2	8	30°	0.88	1.91	2.11	3.12	5.64
m3c2l860	3	10^2	8	60°	0.88	1.91	5.25	5.93	8.90
m3c2l885	3	10^2	8	85°	0.88	1.91	6.40	6.81	10.7
m3c3l8s	3	10^3	8	Sideways	0.88	1.91	2.03	2.58	4.52
m1.5c1l8s	1.5	10	8	Sideways	0.55	1.91	2.16	9.26	12.31
m1.5c2l2s	1.5	10^2	2	Sideways	0.55	1.36	8.72	8.98	18.8
m1.5c2l4s	1.5	10^2	4	Sideways	0.55	1.91	6.26	7.53	13.2
m1.5c2l8s	1.5	10^2	8	Sideways	0.55	1.91	5.36	6.61	12.2
m1.5c2l230	1.5	10^2	2	30°	0.55	1.36	7.73	9.15	17.96
m1.5c2l430	1.5	10^2	4	30°	0.55	1.36	7.04	8.26	13.33
m1.5c2l830	1.5	10^2	8	30°	0.55	1.36	6.03	6.85	13.78
m1.5c2l860	1.5	10^2	8	60°	0.55	1.36	7.50	7.32	14.47
m1.5c2l885	1.5	10^2	8	85°	0.55	1.36	8.08	7.84	13.66

Table 2. The shock jump values for $M = 1.5, 3,$ and 10 .

M	Density/pressure jump
1.5	2.27
3	9.09
10	101.0

be crushed by the shock being driven into them was adopted by Xu & Stone (1995),

$$t_{cs} = \frac{r_s \chi^{1/2}}{v_b}, \quad (11)$$

where r_s is the radius of a spherical cloud of equivalent mass, and is used throughout this paper, in line with Pittard & Goldsmith (2016).

Several other time-scales can be obtained. The time taken for the average filament velocity relative to that of the post-shock flow, v_{ps} (as measured in the frame of the pre-shock ambient medium), to decrease by a factor of e (i.e. the time when the average filament velocity $\langle v \rangle_{cloud} = (1 - 1/e) v_{ps}$) is known as the ‘drag time’, t_{drag} ; the ‘mixing time’, t_{mix} , is the time at which the filament core mass, m_{core} , has reached half that of its initial value; and the filament

‘lifetime’, t_{life} , is defined as the time when the filament core mass has reached one per cent of its initial value.

4 RESULTS

In this section we begin by examining the morphology of the interaction for our reference simulation, model *m3c2l8s*, and then consider the morphology for simulations with $M = 3$ for clouds of varying length and orientation, comparing against calculations made using a shock of $M = 10$ in an adiabatic regime. At the end of this section, we explore the impact of the interaction on various global quantities and time-scales. Table 1 summarizes the calculations performed and provides some key time-scales, whilst Table 2 provides the shock jump values for simulations with $M = 1.5, 3,$ and 10 . We adopt a naming convention such that *m3* denotes $M = 3$, *c2* denotes $\chi = 10^2$, *l8* denotes a filament length of 8, and *s* refers to a filament orientated sideways to the shock front (sideways filaments have $\theta = 0^\circ$; where the orientation of the filament is other than sideways, the number given in the model name refers to the angle of orientation of the major axis to the shock front).

Compared to our previous work in Pittard & Goldsmith (2016), the softer equation of state causes significantly greater compression of the filament. Thus, the cross-section of the filament is smaller than that of the adiabatic filament (with $\gamma = 5/3$). Whilst this effect

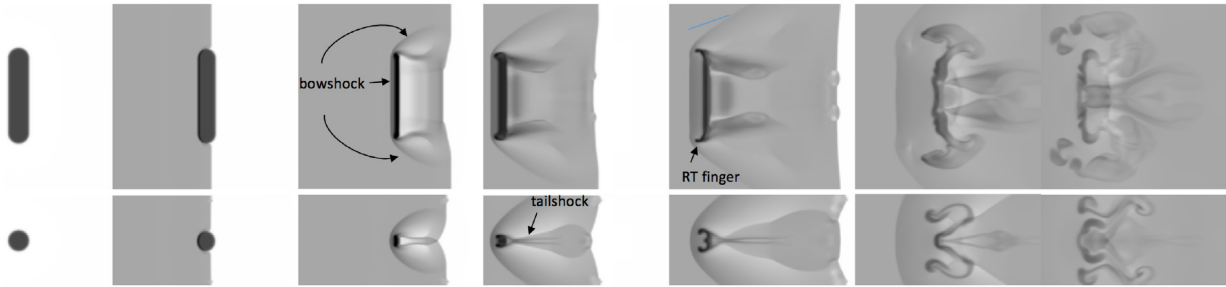


Figure 1. The time evolution of the logarithmic density for model *m3c2l8s* showing the *xy* (top set of panels) and *xz* planes (bottom set of panels). The greyscale shows the logarithm of the mass density, from white (lowest density) to black (highest density). The density in this and subsequent figures has been scaled with respect to the ambient density ρ_{amb} , so that a value of 0 represents the value of ρ_{amb} and 1 represents $10 \times \rho_{\text{amb}}$. The density scale used for this figure extends from 0 to 2.8. The first panel on each row shows the setup of the simulation. The evolution proceeds from the second panel onwards, left to right, with $t = 0.00 t_{\text{cs}}$, $t = 0.39 t_{\text{cs}}$, $t = 0.66 t_{\text{cs}}$, $t = 0.95 t_{\text{cs}}$, $t = 2.16 t_{\text{cs}}$, and $t = 2.82 t_{\text{cs}}$. All frames show the same region for y and z ($-10 < y < 10$ and $-5 < z < 5$, in units of r_c). So that the motion of the cloud is clear, the first three frames show $-10 < x < 10$. Frames 4–6 show $0 < x < 20$, and the final frame shows $20 < x < 40$. Note that in this and similar figures the y and z axes are plotted vertically, with positive towards the top and negative towards the bottom, whilst the shock is initially located at $x = -10$.

tends to reduce the efficiency of the ambient flow in dragging the cloud with it, it is countered by the higher post-shock intercloud density (which in the $\gamma = 1.01$ case is 2.89 times higher for $M = 3$ and 17.3 times higher for $M = 10$, relative to the $\gamma = 5/3$ case). This higher intercloud density, plus the faster post-shock speed, gives a greater drag force. We find that this latter effect is dominant, so that the drag times are much shorter for the isothermal ($\gamma = 1.01$) filaments compared to the adiabatic ($\gamma = 5/3$) filaments. A key consequence of this greater acceleration is that the relative velocity of the ambient and cloud material rapidly declines, such that Kelvin–Helmholtz (KH) and Rayleigh–Taylor (RT) instabilities are mild (see also Nakamura et al. 2006).

4.1 Interaction of a filament with $\chi = 10^2$ and a sideways orientation with a shock of $M = 3$

We begin by discussing the morphology of the interaction for our reference simulation, where $M = 3$, $\chi = 10^2$, $l = 8$, and the filament is oriented sideways to the shock front. Fig. 1 shows the mass density as a function of time for the *xy* and *xz* planes. The first panel in this, and subsequent figures, shows the initial filament orientation, and the shock propagates from left to right. We first describe the nature of the interaction and changing morphology with reference to a filament struck by a $M = 10$ adiabatic shock presented in a previous paper (Pittard & Goldsmith 2016). The rationale for focusing on a filament struck by a $M = 3$ shock instead of that struck by a shock of $M = 10$ is that the former is a more typical scenario for a filamentary IRDC struck by an ISM shock (which are more numerous at lowish Mach numbers).

Fig. 1 shows the filament being struck by the shock from its side. The second panel, at $t = 0.00 t_{\text{cs}}$, shows that the external shock has just passed the centre of the filament, whilst at $t = 0.39 t_{\text{cs}}$ a bow shock has formed on the upstream side of the filament, very close to its upstream edge, in contrast with the $M = 10$ adiabatic simulation where the bow shock is located at a slightly greater distance from the filament (see fig. 3 in Pittard & Goldsmith 2016). The upstream surface of the filament begins to be compressed (as evidenced by an increase in density at this point) by the transmitted shock progressing through it, while the external shock sweeps symmetrically around the outside of the filament and converges at the rear of the cloud, creating a region of higher pressure compared to the pressure of the ambient medium downstream of the cloud.

The convergence of the external shock on the $z = 0$ plane forces a secondary shock back through the cloud in the upstream direction.

The filament reaches maximum compression at $t \approx 0.39 t_{\text{cs}}$. At this point the transmitted shock has travelled through and exited the filament and has propagated downstream, accelerating as it proceeds and dragging filament material with it. As it exits the back of the filament the ends of the filament begin to display the effects of diffracted shocks and some ablation of filament material by the surrounding flow is observed (in line with the sideways filament in the $M = 10$ adiabatic simulation presented in Pittard & Goldsmith 2016). The ends of the filament at this point are bent in the upstream direction; this bears some similarities with the sideways filament of length $l = 4$ and density contrast $\chi = 10$ embedded in a perpendicular magnetic field in Goldsmith & Pittard (2016), where it was noted that care ought to be taken from an observational point of view since the interpretation of such a filament might lead to the conclusion that the shock was travelling in the $-x$ direction (this effect was also visible in Pittard & Goldsmith 2016). After this point (at $t \approx 0.66 t_{\text{cs}}$), the filament expands due to rarefaction waves within it. A ‘tail shock’ (as noted in Pittard & Goldsmith 2016) is visible. The filament is then seen to collapse in on itself at $t \approx 0.95 t_{\text{cs}}$ and become compacted in the direction of shock propagation. Small RT fingers develop on the tips of the filament. Unlike in Pittard & Goldsmith (2016), the upstream edge of the filament displays no obvious KH instabilities at $t = 0.92 t_{\text{cs}}$ due to the quasi-isothermal nature of the interaction. The filament is also much more compressed than in the aforementioned study and its tail of ablated cloud material is much smoother. As noted in Pittard & Goldsmith (2016), the filament forms a ‘three-rolled’ structure, though this becomes more spread out as the filament material is ablated by the flow.

Fig. 2 shows volumetric density renderings of the filament as a function of time in the *xz* and *xy* planes, respectively. Owing to the focus on filament material, this figure (and subsequent similar figures) does not show features such as the bow shock or other elements of the ambient material or flow. The main differences between this figure and fig. 1 of Pittard & Goldsmith (2016) are that the entrainment of filament material by the flow is much smoother in the current figure (as expected by the lack of KH instabilities produced by the damping effect of the quasi-isothermal equation of state) and thus there is no turbulent mass of filament material located to the rear of the cloud. Moreover, a short tail of

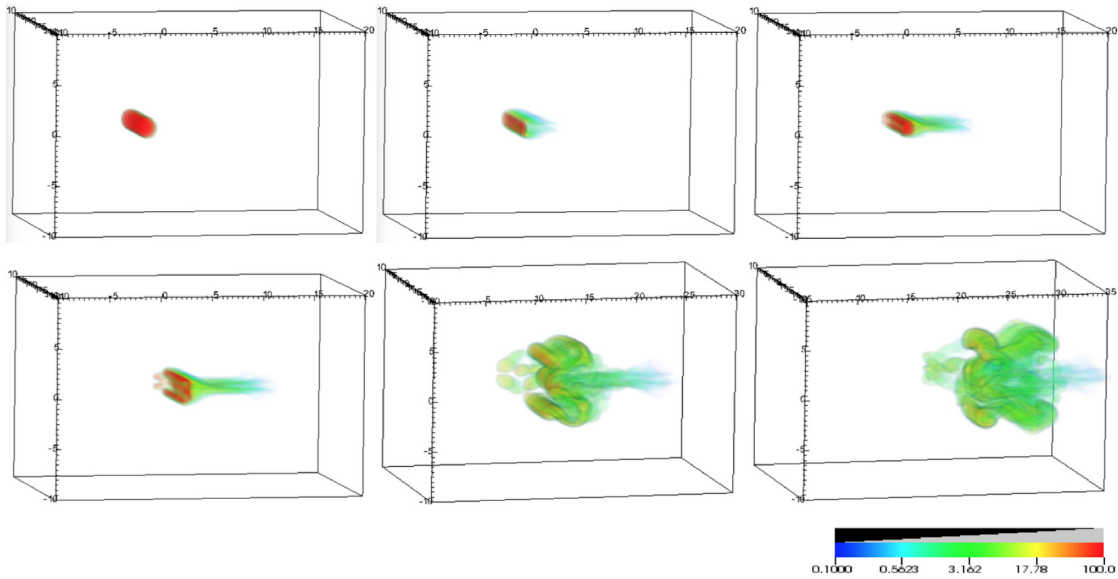


Figure 2. A 3D volumetric rendering of model *m3c2l8s*. From left to right, top to bottom the timings are $t = 0.00 t_{CS}$, $t = 0.39 t_{CS}$, $t = 0.66 t_{CS}$, $t = 0.95 t_{CS}$, $t = 2.16 t_{CS}$, and $t = 2.82 t_{CS}$. The colour scale in this and similar figures indicates the density of the filament, normalized by the density of the ambient medium, with the initial filament density being 100 (or red). The ambient medium is not shown; therefore, the bow shock upstream of the filament is also not visible.

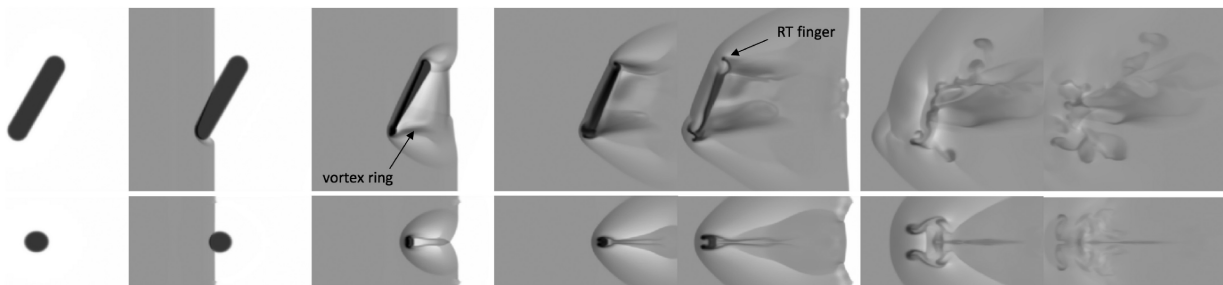


Figure 3. The time evolution of the logarithmic density for model *m3c2l830* showing the xz (top set of panels) and xy planes (bottom set of panels). The greyscale shows the logarithm of the mass density, from white (lowest density) to black (highest density). The density scale used for this figure extends from 0 to 2.8. The first panel on each row shows the setup of the simulation. The evolution proceeds from the second panel onwards, left to right, with $t = 0.00 t_{CS}$, $t = 0.39 t_{CS}$, $t = 0.66 t_{CS}$, $t = 0.95 t_{CS}$, $t = 2.16 t_{CS}$, and $t = 2.82 t_{CS}$. All frames show the same region in y and z ($-5 < y < 5$ and $-10 < z < 10$, in units of r_c). So that the motion of the cloud is clear, the first four frames show $-10 < x < 10$. Frame 5 shows $0 < x < 20$, frame 6 shows $5 < x < 25$, and the final frame shows $20 < x < 40$.

material is observed to form on the axis behind the filament as the simulation progresses. The three-rolled structure identified by Pittard & Goldsmith (2016) is present in this figure (from $t \approx 0.95 t_{CS}$ onwards).

4.2 Effect of filament orientation on the interaction

Fig. 3 shows the interaction of an $M = 3$ shock with an obliquely oriented filament (i.e. one oriented at $\theta = 30^\circ$ to the shock front). Unlike the sideways filament in Figs 1 and 2 which was struck from the side, the filament in the current figure is initially struck at its upstream-facing end. The external shock is then channelled around the edge of the filament. By $t = 0.39 t_{CS}$ the external shock has fully diffracted around the filament and has converged on the axis behind the filament, interacting and causing shocks to be driven back into the rear of the filament at an angle. At the same time, a transmitted shock is making its way through the filament from the upstream side, leading to that part of the filament becoming compressed and the filament taking on a wedge-shaped appearance. As the shock

moves through the filament, the bottom end of the filament expands whilst the top end is steadily compressed ($t \approx 0.66 t_{CS}$). Filament material begins to be ablated from each end of the filament at $t = 0.39 t_{CS}$ onwards and a vortex ring is visible at the base of the filament. Meanwhile, an RT finger is evident at the top end of the filament from $t \approx 0.95 t_{CS}$. Considerably less turbulent stripping of filament material is evident in the current figure and it is clear that the bow shock is much closer to the upstream edge of the filament compared to the bow shock in fig. 7 in Pittard & Goldsmith (2016). Because of the RT finger, the flow of filament material stripped by the surrounding flow is channelled behind and above the filament, though it is much less turbulent. At $t = 2.16 t_{CS}$ multiple shocks are present at the location of the bow shock and are caused by shocks propagating back through the filament and accelerating into the surrounding flow. Clumps of filament material are observed to break away from the top of the filament, and the filament core mass has been significantly ablated by the flow, though still retaining its structure. Fig. 4 shows how the filament forms a short turbulent wake at late times.

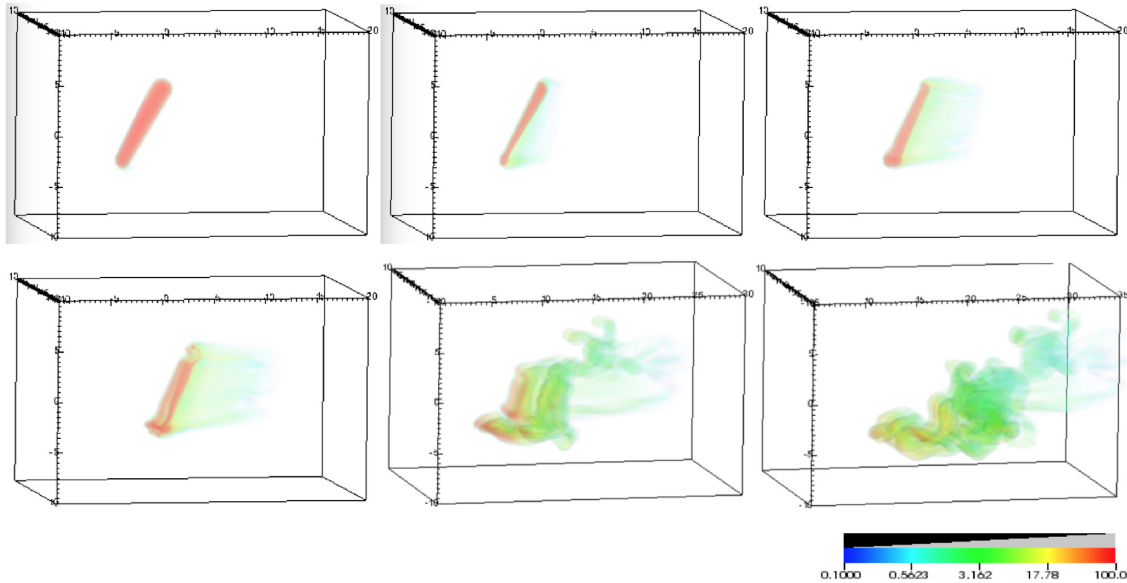


Figure 4. A 3D volumetric rendering of model *m3c2l830*. From left to right, top to bottom the timings are $t = 0.00 t_{CS}$, $t = 0.39 t_{CS}$, $t = 0.66 t_{CS}$, $t = 0.95 t_{CS}$, $t = 2.16 t_{CS}$, and $t = 2.82 t_{CS}$.

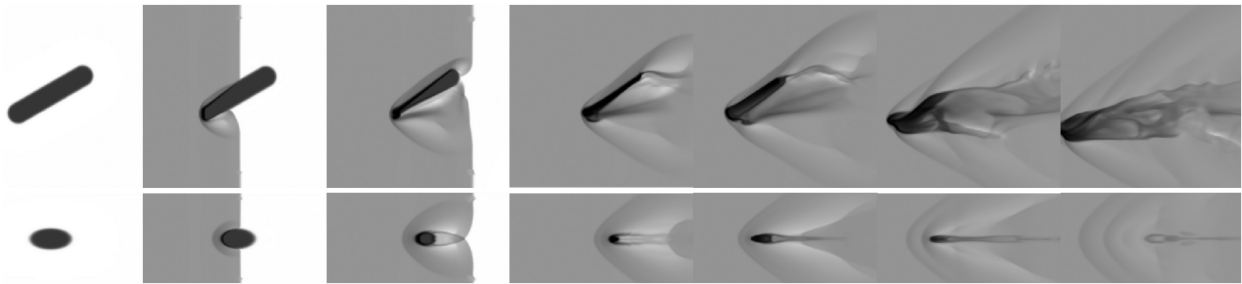


Figure 5. The time evolution of the logarithmic density for model *m3c2l860* showing the xz (top set of panels) and xy planes (bottom set of panels). The greyscale shows the logarithm of the mass density, from white (lowest density) to black (highest density). The density scale used for this figure extends from 0 to 2.8. The first panel on each row shows the setup of the simulation. The evolution proceeds from the second panel onwards, left to right, with $t = 0.00 t_{CS}$, $t = 0.39 t_{CS}$, $t = 0.66 t_{CS}$, $t = 0.95 t_{CS}$, $t = 2.16 t_{CS}$, and $t = 2.82 t_{CS}$. All frames show the same region in y and z ($-5 < y < 5$ and $-10 < z < 10$, in units of r_C). So that the motion of the cloud is clear, the first four frames show $-10 < x < 10$. Frame 5 shows $-5 < x < 15$, frame 6 shows $0 < x < 20$, and the final frame shows $5 < x < 25$.

The interaction of a shock with a filament oriented at $\theta = 60^\circ$ to the shock front (simulation *m3c2l860*) is shown in Figs 5 and 6. The initial morphology is not dissimilar to that in simulation *m3c2l830*. However, at later times (from $t = 0.95 t_{CS}$ onwards) the filament length becomes compressed until it is less than half its original length. The vortex ring located at the upstream end of the filament is much larger than before, whilst the RT finger at the top of the filament and its associated wake of filament material extends much further downstream. A double bow shock is observed in the xy panels at later times.

Figs 7 and 8 show the interaction for simulation *m3c2l885*, a filament lying almost end-on to the shock front. Here, the transmitted shock travels along the entire length of the filament and a small vortex ring is visible at the upstream end. Shocks are transmitted through the sides of the filament as the transmitted and external shocks sweep through and around it. These sideways shocks, however, produce less reverberation within the filament than in the comparable filament in Pittard & Goldsmith (2016)

and there is therefore considerably less voiding of the filament in the present figures. There are two main differences between this filament and that in Pittard & Goldsmith (2016). First, the bow shock is located immediately on the upstream edge of the filament and is sharply angled downstream on either side, whereas that in Pittard & Goldsmith (2016) is much more rounded and located at a distance from the filament edge. Secondly, the filament develops a smooth tail of material as the simulation progresses and broadly retains the shape of its core, unlike in the previous paper.

4.3 Mach number dependence

The Mach number dependence of the interaction is now explored. Fig. 9 shows the interaction of a Mach 10 shock with a filament of $\chi = 10^2$ and a sideways orientation (simulation *m10c2l8s*). In this interaction the post-shock gas is almost as dense as the filament. It is immediately clear that the filament undergoes much greater

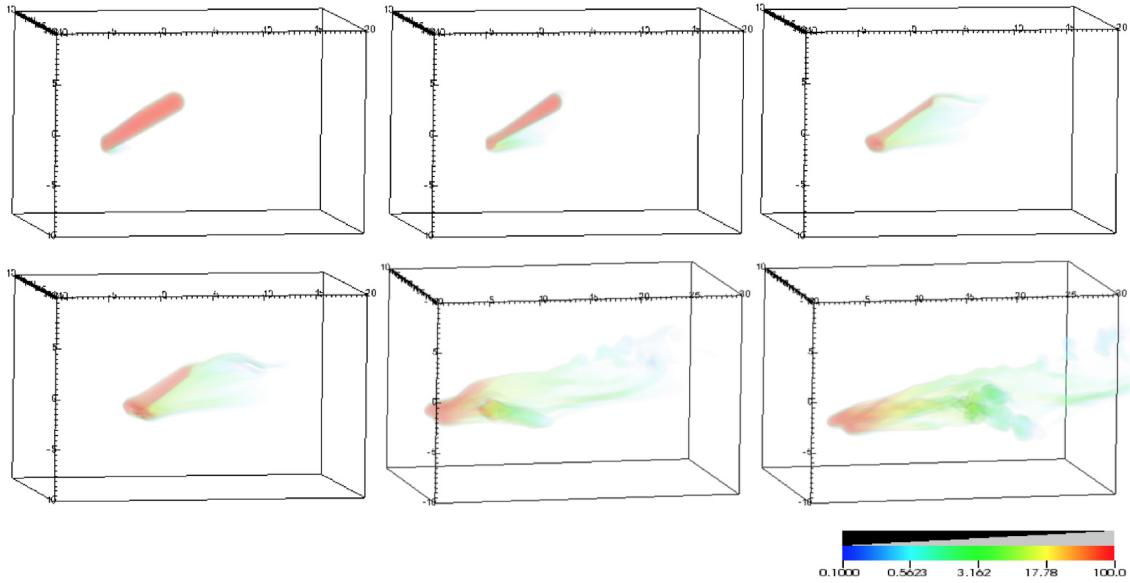


Figure 6. A 3D volumetric rendering of model *m3c2l860*. From left to right, top to bottom the timings are $t = 0.00 t_{cs}$, $t = 0.39 t_{cs}$, $t = 0.66 t_{cs}$, $t = 0.95 t_{cs}$, $t = 2.16 t_{cs}$, and $t = 2.82 t_{cs}$.

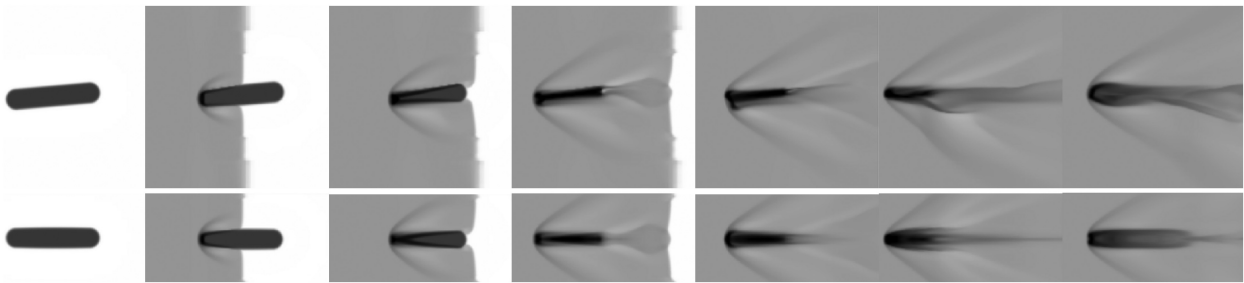


Figure 7. The time evolution of the logarithmic density for model *m3c2l885* showing the xz (top set of panels) and xy planes (bottom set of panels). The greyscale shows the logarithm of the mass density, from white (lowest density) to black (highest density). The density scale used for this figure extends from 0 to 2.8. The first panel on each row shows the setup of the simulation. The evolution proceeds from the second panel onwards, left to right, with $t = 0.00 t_{cs}$, $t = 0.39 t_{cs}$, $t = 0.66 t_{cs}$, $t = 0.95 t_{cs}$, $t = 2.16 t_{cs}$, and $t = 2.82 t_{cs}$. All frames show the same region in y and z ($-5 < y < 5$ and $-10 < z < 10$, in units of r_c). So that the motion of the cloud is clear, the first three frames show $-10 < x < 10$. Frames 4 and 5 show $-5 < x < 15$, and the final two frames show $0 < x < 20$. Note that this simulation was run at a slightly lower resolution of R_{16} .

compression in the x direction compared to the same filament struck by a $M = 3$ shock, and that this compression occurs over a much shorter normalized time-scale. Furthermore, the filament rapidly loses its core mass; much of the core mass has been ablated by the flow by $t \approx 1 t_{cs}$. This is a significant finding, and one which is not observed in adiabatic shock-filament interactions for an $M = 10$ shock. It also contradicts the findings of Klein et al. (1994) and Nakamura et al. (2006) in terms of their simulations using $\gamma = 1.1$ for the cloud (though it should be noted that they used a spherical cloud and not a filament). With the bow shock located so close to the upstream edge of the filament, RT fingers at each end of the filament are less in evidence, though most of the filament material is still lost from the ends of the filament. This filament can also be compared to Figs 1–3 in Pittard & Goldsmith (2016), thus highlighting the effect of only changing γ from $5/3$ to 1.01 . Compared to the adiabatic $M = 10$ simulation, the quasi-isothermal shock in the current figure has a far greater density jump than the adiabatic shock and thus its interaction with the filament is much

stronger. For example, it is clear that the filament in Figs 1–3 in Pittard & Goldsmith (2016) is far less compressed compared to that in model *m10c2l8s*. The quasi-isothermal filament also shows no evidence of the ‘three-rolled’ structure present in Pittard & Goldsmith (2016). Moreover, the transmitted shock in Fig. 9 travels through the filament much more quickly than in Figs 1–3 in Pittard & Goldsmith (2016) (cf. the third panel of Fig. 9 where the transmitted shock has exited the filament by approximately $t = 0.16 t_{cs}$ with the fourth panel of Fig. 3 in Pittard & Goldsmith (2016) which shows the transmitted shock exiting the cloud at $t = 0.53 t_{cs}$). Again, the bow shock is located at the upstream edge of the filament, compared to being located some distance away in Fig. 3 in Pittard & Goldsmith (2016). Moreover, the quasi-isothermal filament has lost almost all its core mass by $t = 1 t_{cs}$, whereas the $M = 10$ adiabatic filament still has a significant amount of its core intact by this point.

Fig. 10 shows the interaction of a filament with an $M = 1.5$ shock (simulation *m1.5c2l8s*). It can be seen that the interaction is more

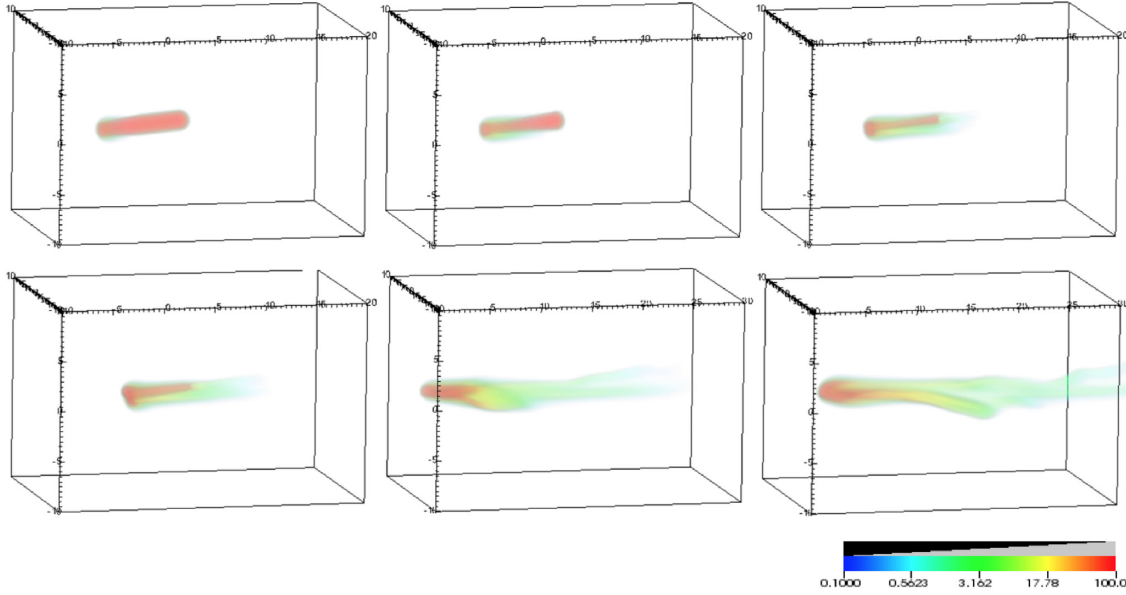


Figure 8. A 3D volumetric rendering of model *m3c2l885*. From left to right, top to bottom the timings are $t = 0.00 t_{cs}$, $t = 0.39 t_{cs}$, $t = 0.66 t_{cs}$, $t = 0.95 t_{cs}$, $t = 2.16 t_{cs}$, and $t = 2.82 t_{cs}$.



Figure 9. The time evolution of the logarithmic density for model *m10c2l8s* showing the xy (top set of panels) and xz planes (bottom set of panels). The greyscale shows the logarithm of the mass density, from white (lowest density) to black (highest density). The density scale used for this figure extends from 0 to 2.8. The evolution proceeds, left to right, with $t = 0.05 t_{cs}$, $t = 0.16 t_{cs}$, $t = 0.27 t_{cs}$, and $t = 0.96 t_{cs}$. All frames show the same region in y and z ($-10 < y < 10$ and $-5 < z < 5$, in units of r_c). So that the motion of the cloud is clear, the first three frames show $-10 < x < 10$. The final frame shows $10 < x < 30$. In the first panel, the shock has just hit the leading edge of the filament, whereas in the second panel the shock has just passed through the filament, leaving the filament unusually compressed.

gentle than that in model *m3c2l8s* in that filament material is not strongly stripped from the filament ends and channelled downstream behind the cloud. Instead, filament material is stripped over a longer time-scale by the flow and the filament core remains reasonably intact for much longer than in simulation *m3c2l8s*. Many more instabilities are present on the surface of the filament throughout the simulation particularly during the early stages, compared to the filament in model *m3c2l8s*. Moreover, the RT fingers located at the filament ends are much more pronounced in the current figure and extend behind the filament rather than upstream of it. Some clumps of filament material are observed to break off the main core from around $t = 2.75 t_{cs}$.

4.4 χ dependence

We now investigate the dependence of the interaction on the filament density contrast. Fig. 11 shows the effect on the interaction when $\chi = 10^3$. The most obvious contrast between the filament in this simulation and that in *m3c2l8s* is the thickness of the filament once the transmitted shock has progressed through it. In addition, the filament forms a much more angular shape compared to the previous model. At later times, the filament retains its thin, ‘C’-shaped morphology in the xy plane whilst a considerable density of filament material is present at the rear of the filament forming a long, flat, and wide wake. Note that the resolution of this simulation was R_{16} , in contrast with the rest of the simulations.

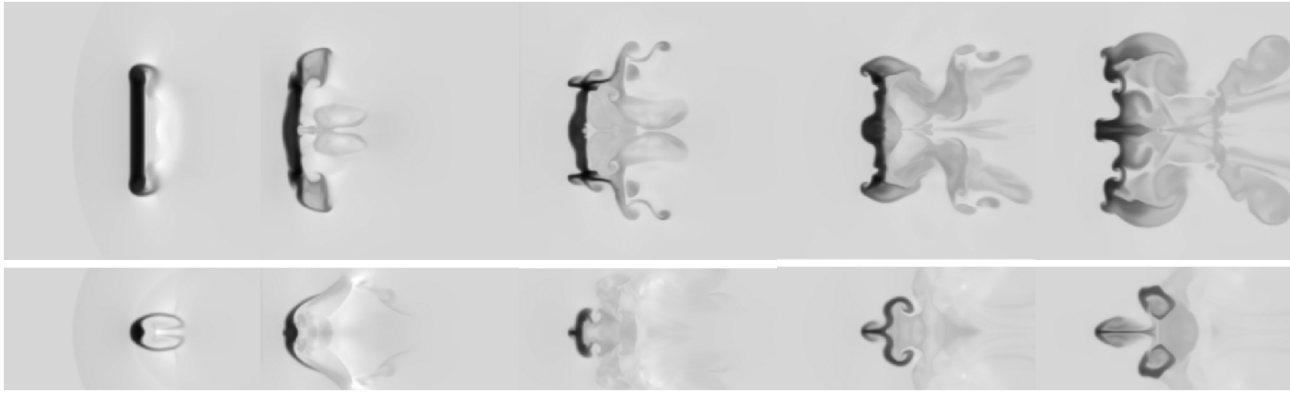


Figure 10. The time evolution of the logarithmic density for model *m1.5c2/8s* showing the *xy* (top set of panels) and *xz* planes (bottom set of panels). The greyscale shows the logarithm of the mass density, from white (lowest density) to black (highest density). The density scale used for this figure extends from 0 to 2.8. The evolution proceeds, left to right, with $t = 0.58 t_{cs}$, $t = 1.92 t_{cs}$, $t = 2.75 t_{cs}$, $t = 3.58 t_{cs}$, and $t = 4.35 t_{cs}$. All frames show the same region in *y* and *z* ($-10 < y < 10$ and $-5 < z < 5$, in units of r_c). So that the motion of the cloud is clear, the first frame shows $-10 < x < 10$. The next three frames show $0 < x < 20$, and the final frame shows $5 < x < 25$.

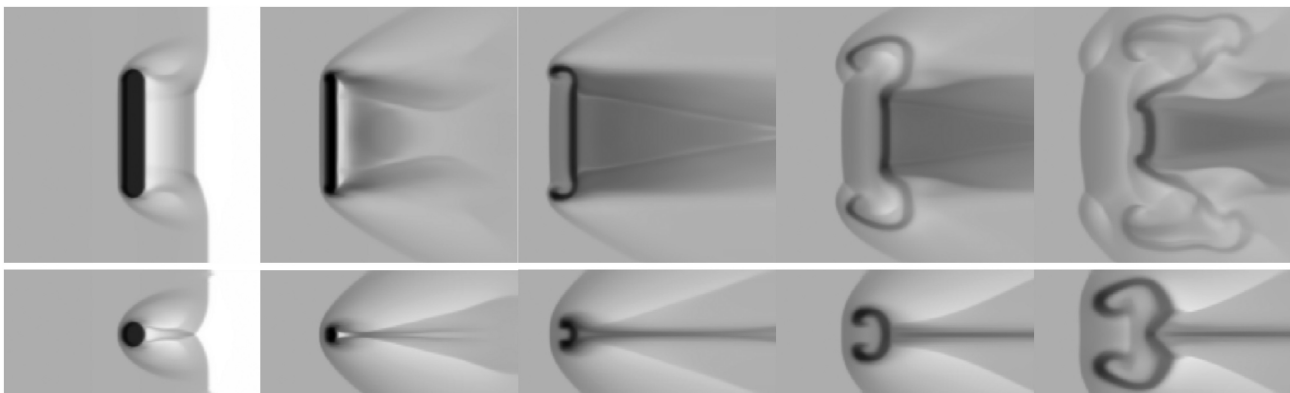


Figure 11. The time evolution of the logarithmic density for model *m3c3/8s* showing the *xy* (top set of panels) and *xz* planes (bottom set of panels). The greyscale shows the logarithm of the mass density, from white (lowest density) to black (highest density). The density scale used for this figure extends from 0 to 3.7. The evolution proceeds, left to right, with $t = 0.10 t_{cs}$, $t = 0.29 t_{cs}$, $t = 0.87 t_{cs}$, $t = 1.15 t_{cs}$, and $t = 1.41 t_{cs}$. All frames show the same region in *y* and *z* ($-10 < y < 10$ and $-5 < z < 5$, in units of r_c). So that the motion of the cloud is clear, the first frame shows $-10 < x < 10$. Frame 2 shows $-5 < x < 15$, frames 3 and 4 show $0 < x < 20$, and the final frame shows $5 < x < 25$. Note that this simulation was run at a slightly lower resolution of R_{16} .

Fig. 12 shows the interaction when $\chi = 10$. In this interaction the post-shock density almost exceeds that of the cloud. At $t = 0.74 t_{cs}$ the filament is compressed and its filament tips are bent downstream behind the filament, unlike in similar simulations where $\chi = 10^2$ or 10^3 . The bow shock is initially located very close to the filament. However, by $t = 1.56 t_{cs}$ it has moved further upstream. Neither this filament nor that in Fig. 11 show the three-rolled structure visible in Fig. 2. This result is interesting because the three-rolled structure was seen in the $\chi = 10^3$ simulation presented in fig. 24 in Pittard & Goldsmith (2016).

4.5 Statistics

The evolution of various global quantities of the interaction is now explored, starting with the simulations with $M = 3$ and $\chi = 10^2$. We then consider the Mach- and χ -dependency of the global quantities. Figs 13 to 16 show the time evolution of these key quantities, whilst Figs 19 and 20 and Table 1 present various time-scales taken from these simulations.

Considering first the evolution of the filament core mass, m_{core} , Fig. 13(a) shows the decline in core mass for filaments of differing

length with $M = 3$, $\chi = 10^2$, and a sideways orientation. Also shown are the results for a spherical cloud. It can be seen that the time taken for the core mass to be destroyed is very similar for all lengths of filament (circa $t = 7 t_{cs}$), though the filament with length $l = 8$ is destroyed slightly faster. Fig. 13(b), where the filament is orientated at $\theta = 30^\circ$ to the shock front, shows some slight variation, with shorter filaments surviving for slightly longer normalized times than longer ones, though interestingly the spherical cloud mirrors the behaviour of the filament with length $l = 8$, which is odd given the greater mass of the filament compared to the spherical cloud. However, when these two figures are compared with Fig. 13(c), which presents filaments with various orientations but a length of $l = 8$, it can be seen that there is much more variety in the rate of mass-loss. Filaments aligned more closely to the shock front (i.e. filaments at $\theta = 0^\circ$ and 30°) lose mass much more quickly than those oriented more ‘end-on’ to the shock. Indeed, the filaments with very small angles of orientation have near-identical profiles, in contrast to the results presented in Pittard & Goldsmith (2016). It is interesting to note that our results differ slightly from those in Pittard & Goldsmith (2016), where the filament orientated at $\theta = 60^\circ$ had the slowest degree of mass-loss, in that the filament

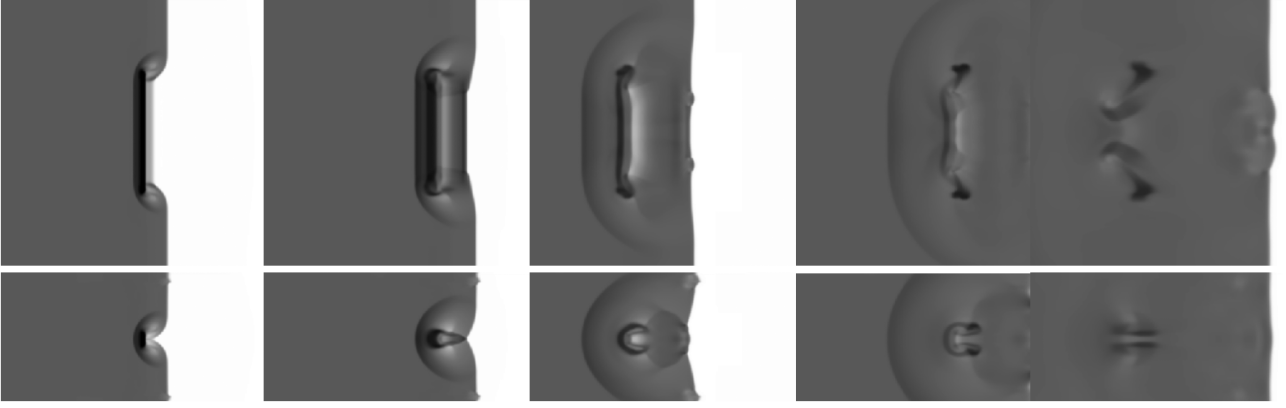


Figure 12. The time evolution of the logarithmic density for model $m3c1l8s$ showing the $x-y$ (top set of panels) and $x-z$ planes (bottom set of panels). The greyscale shows the logarithm of the mass density, from white (lowest density) to black (highest density). The density scale used for this figure extends from 0 to 1.7. The evolution proceeds, left to right, with $t = 0.33 t_{cs}$, $t = 1.05 t_{cs}$, $t = 1.90 t_{cs}$, $t = 2.95 t_{cs}$, and $t = 6.28 t_{cs}$. All frames show the same region in y and z ($-10 < y < 10$ and $-5 < z < 5$, in units of r_c). So that the motion of the cloud is clear, the first two frames show $-10 < x < 10$, frame 3 shows $0 < x < 20$, frame 4 shows $20 < x < 40$, and the final frame shows $30 < x < 50$.

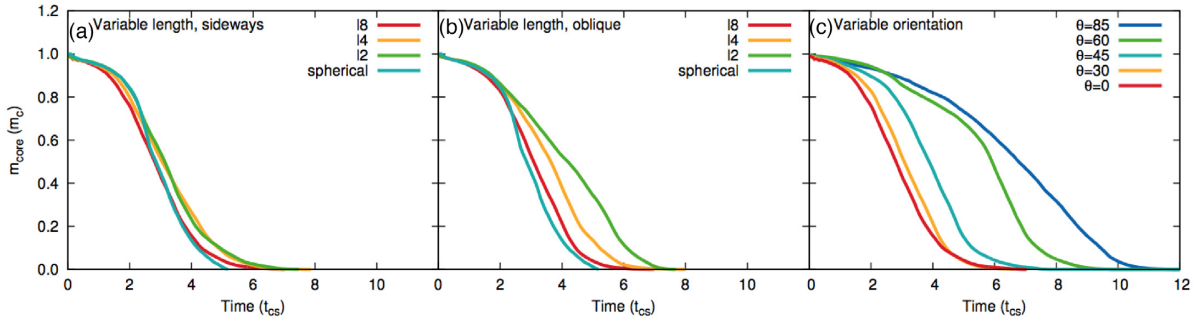


Figure 13. Time evolution of the core mass, m_{core} , normalized to its initial value, for various simulations with $M = 3$ and $\chi = 10^2$. The left-hand panels are for ‘sideways’ simulations, the centre panels are for simulations with $\theta = 30^\circ$, while the right-hand panels are for filaments with $l = 8$.

orientated at $\theta = 85^\circ$ took the longest to be destroyed in our work. The spread in the rate of mass-loss with orientation angle is also much greater than shown in fig. 28 in Pittard & Goldsmith (2016) for filaments with $M = 10$ and $\gamma = 5/3$.

Fig. 14 shows the time evolution of the x and z centre-of-mass positions of the filament for simulations with $M = 3$ and $\chi = 10^2$. When considering first the x centre of mass the variation of the results in both panels (a) and (b) is immediately clear. This shows that filaments of increasing length are accelerated downstream more rapidly than shorter filaments, agreeing with the results presented in Pittard & Goldsmith (2016). However, compared to the results in that paper, the results in Figs 14(a) and (b) show that the acceleration of all filaments is higher by 50 per cent. This is caused by the greater post-shock density and speed of gas in isothermal shocks. Some uniformity in filament acceleration/position of the centre of mass is found in panel (c), at least in terms of filaments of orientation $\theta \leq 30^\circ$. However, there is also a clear gap between filaments with $\theta = 0^\circ-30^\circ$ and those with $\theta = 60^\circ-85^\circ$. This may be because the latter present less of their surface area to the shock front. This also agrees with the results of Pittard & Goldsmith (2016).

Considering the time evolution of the filament centre of mass in the z -direction (Figs 14d-f), no movement of the filament is observed in the z -direction for filaments with a sideways orientation. This is due to the effects of symmetry. When considering panel (e), though, it is clear that these filaments are pushed downwards after the shock has overrun them; the filament with length $l = 8$ shows

far greater displacement than that with length $l = 2$ because there is a greater surface area-to-volume ratio as l increases. In comparison with the adiabatic simulations in Pittard & Goldsmith (2016), where the longest filament with an orientation of $\theta = 30^\circ$ experienced a displacement of up to $10 r_c$ at later times, the filaments in this study are only displaced by between 3.5 and $6.5 r_c$. In Fig. 14(f) it can be seen that the orientation of the filament has a much larger impact on the displacement of the filament in the z -direction. In contrast to the results presented in Pittard & Goldsmith (2016), the filament with an orientation of $\theta = 60^\circ$ shows as much displacement as a filament with $\theta = 30^\circ$. However, the uplift observed in the filament orientated at $\theta = 85^\circ$ is similar but this time occurs at around $t \approx 5 t_{cs}$ (as opposed to $t \approx 1 t_{cs}$ in the $M = 10$, $\gamma = 5/3$ case). This filament is also displaced much more in the z direction. Filaments orientated at $\theta = 30^\circ$ and $\theta = 60^\circ$ experience a much greater downward motion compared to the other two filaments.

The time evolution of the mean filament velocity in the direction of shock propagation is shown in Figs 15(a) to (c). All panels show that the asymptotic velocity reached by the filaments is very similar, though there is some variation within this in that longer filaments accelerate faster than spherical clouds. The asymptotic velocity is reached by $t \approx 5 t_{cs}$ in the first two panels (a) and (b). Filaments which are sideways to the shock front or orientated at $\theta = 30^\circ$ have near identical acceleration, though again there is some variation according to filament length with shorter filaments accelerated more slowly than longer ones. Moreover, the spherical cloud is shown to

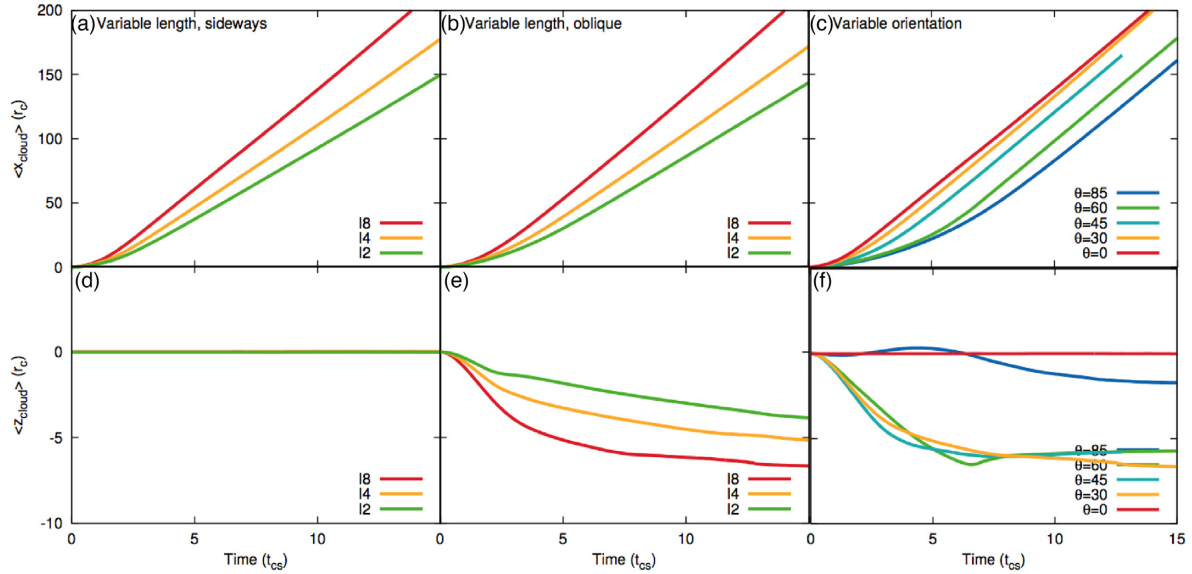


Figure 14. The time evolution of the x and z centre-of-mass position of the filament for various simulations (the same simulations as in Fig. 13). The middle panels show simulations with $\theta = 30^\circ$, while the right-hand panels are for filaments with $l = 8$.

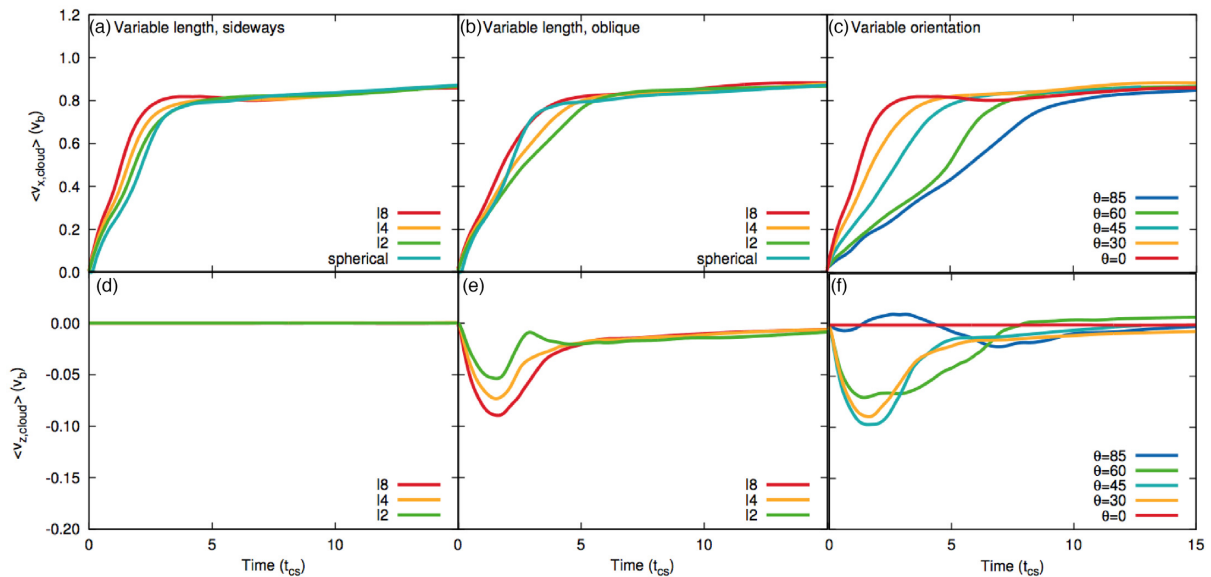


Figure 15. As Fig. 13 but showing the time evolution of the filament mean velocity in the direction of shock propagation ($\langle v_{x,\text{cloud}} \rangle$) and in the z -direction ($\langle v_{z,\text{cloud}} \rangle$). The middle panels again show simulations with $\theta = 30^\circ$, while the right-hand panels are for filaments with $l = 8$.

accelerate faster than the filaments between $t \approx 2-3 t_{\text{cs}}$. When the filament length $l = 8$ and the filament orientation is varied there is much greater variance in filament acceleration and a clear split is observed between filaments with small angles of orientation and those with large angles of orientation; the latter are accelerated up to the ambient flow velocity at a much slower rate whilst the sideways filament shows the fastest acceleration. This split is far less pronounced when $M = 10$ and $\gamma = 5/3$ (cf. fig. 30 in Pittard & Goldsmith 2016). In terms of the mean velocity perpendicular to the direction of shock propagation, Fig. 15(d) shows no movement for filaments oriented sideways to the shock (cf. with Pittard & Goldsmith 2016 where there was slight oscillation about zero v_b). However, for obliquely oriented filaments and filaments with $l = 8$

and variable orientations there is considerable variety (panels e and f, respectively). When the filament orientation is $\theta = 30^\circ$ (panel e), the maximum velocity increases with increasing filament length (with the filament with $l = 8$ attaining a maximum absolute velocity of almost $+0.1 v_b$) owing to the fragmentation of the filament core in the transverse direction. This maximum velocity soon drops back to zero again for all filaments once the filament core has been ablated by the flow and is unable to significantly fragment any further. However, in panel (f) the picture is much more complex. The filament orientated at $\theta = 85^\circ$ shows a small net positive velocity but then oscillates between negative and zero z -velocities until reaching an equilibrium at zero. Meanwhile, the filament with $\theta = 30^\circ$ exhibits the greatest negative z -velocity (reaching $v_z \approx$

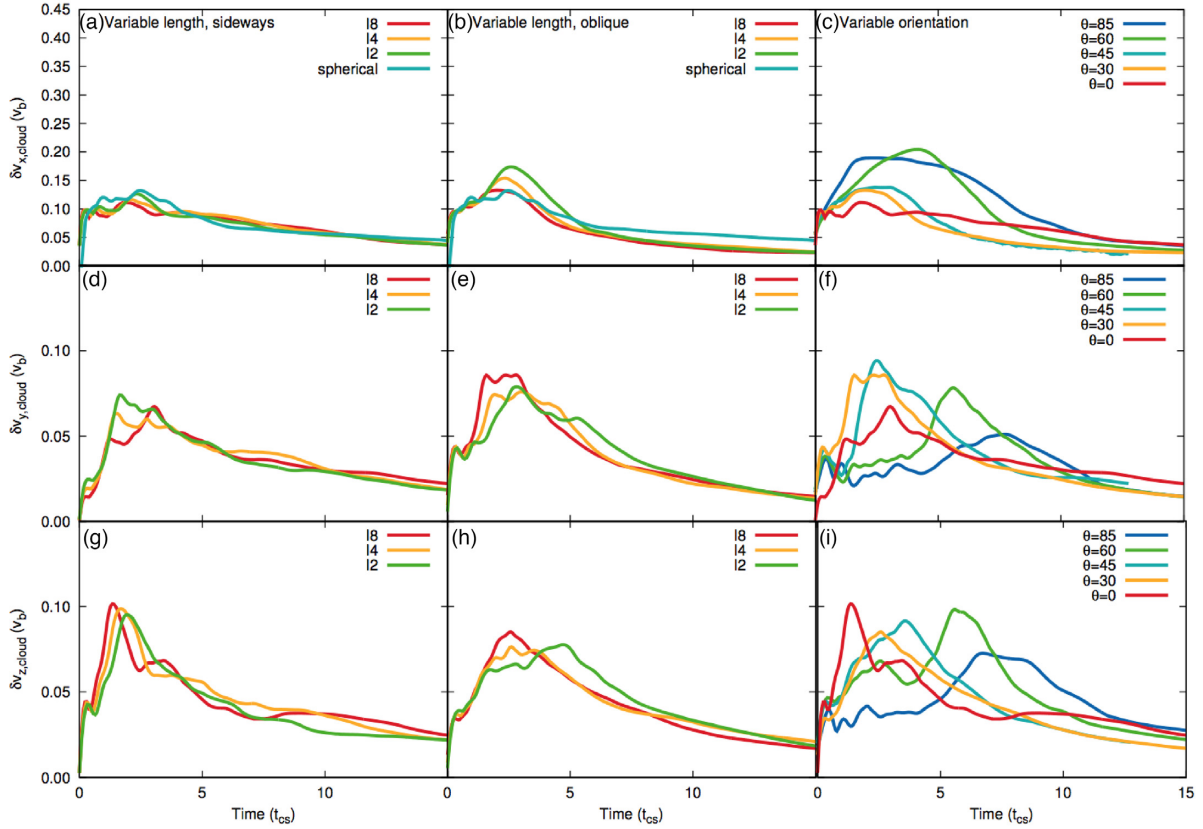


Figure 16. As Fig. 13 but showing the time evolution of the filament velocity dispersion in each direction. The middle panels again show simulations with $\theta = 30^\circ$, while the right-hand panels are for filaments with $l = 8$.

$-0.08v_b$), in agreement with the comparable filament in Pittard & Goldsmith (2016) (cf. with their fig. 30).

Fig. 16 shows the filament velocity dispersion in each direction. Note that the vertical scale differs between each row of panels. There is reasonable agreement between the simulations when the cloud is orientated sideways or obliquely to the shock, and the maximum peak velocity distribution is almost homogenous with a peak at between 0.06 and $0.17 v_b$. In contrast, panels (c), (f), and (i) show much greater variance in the velocity dispersion in all directions and far less uniformity. The greatest maximum velocity dispersion is in $\delta v_{x,\text{cloud}}$ where the filament oriented at $\theta = 60^\circ$ to the shock front reaches just over $0.20 v_b$. Compared to fig. 31 in Pittard & Goldsmith (2016), panels (f) and (i) have much more variation between the models, with the filaments oriented at $\theta = 30^\circ$ and $\theta = 0^\circ$ achieving peak velocity dispersion in the y - and z -directions at earlier times.

The orientation dependence of the interaction is shown in Figs 13–16. In all cases the evolution of a filament oriented at $\theta = 45^\circ$ shows behaviour inbetween the cases for filaments oriented at $\theta = 30^\circ$ and 60° . Sometimes there are large differences between the $\theta = 30^\circ$ and 60° results that the $\theta = 45^\circ$ simulation fills in (e.g. Figs 13c, 14c, 15c). For some other quantities the $\theta = 30^\circ$, 45° , and 60° results all closely agree (e.g. Figs 14f and 15f).

The Mach dependence of m_{core} , $\langle v_{x,\text{cloud}} \rangle$, and $\langle x_{\text{cloud}} \rangle$ for filaments with $l = 8 r_c$ and oriented sideways to the shock front is now investigated. Fig. 17 shows these global quantities for simulations with $\chi = 10$ and 10^2 . In line with Pittard & Goldsmith (2016) we find that m_{core} declines more slowly as M is reduced, in agreement with

Pittard & Goldsmith (2016), and that the acceleration and centre of mass position of the filament, as evidenced by $\langle v_{x,\text{cloud}} \rangle$ and $\langle x_{\text{cloud}} \rangle$, both reduce as M decreases. Panel (f) shows that the filament centre of mass is moved downstream slightly more slowly when $M = 3$ compared to when $M = 10$, though there is a clear difference between these two filaments and that when $M = 1.5$, where the centre of mass is extremely slow to move downstream. However, the much more striking result is the extremely rapid evolution of the $M = 10$ simulation (previously highlighted in Fig. 9), arising from the hugely powerful impact of a Mach 10 isothermal shock due to its extremely high post-shock density.

Note that in Fig. 17, for $\chi = 10$ and 100 the mean downstream velocity plots appear very similar when $M = 3$, whereas the evolution of the mean downstream position appears very different. The reason for this is that the time is normalized to t_{cs} , and t_{cs} is dependent on χ . So while the clouds attain similar mean velocities of $\approx 0.8 v_b$, the denser cloud survives much longer and travels much further downstream.

Fig. 18 shows the χ dependence of m_{core} , $\langle v_{x,\text{cloud}} \rangle$, and $\langle x_{\text{cloud}} \rangle$ for simulations with $M = 3$ and filaments with $l = 8 r_c$ and oriented sideways to the shock. In terms of $\langle v_{x,\text{cloud}} \rangle$ (panel b) of Fig. 18) the lower χ filament experiences a faster acceleration up to the asymptotic velocity of the flow but, in comparison with the other two filaments which show very similar profiles, its velocity then drops below the asymptotic value before very slowly climbing back up again. Normalized to t_{cs} , filaments with a lower density contrast are also slower to lose mass compared to those with a higher density contrast. Panel (c) shows great variation between all filaments in

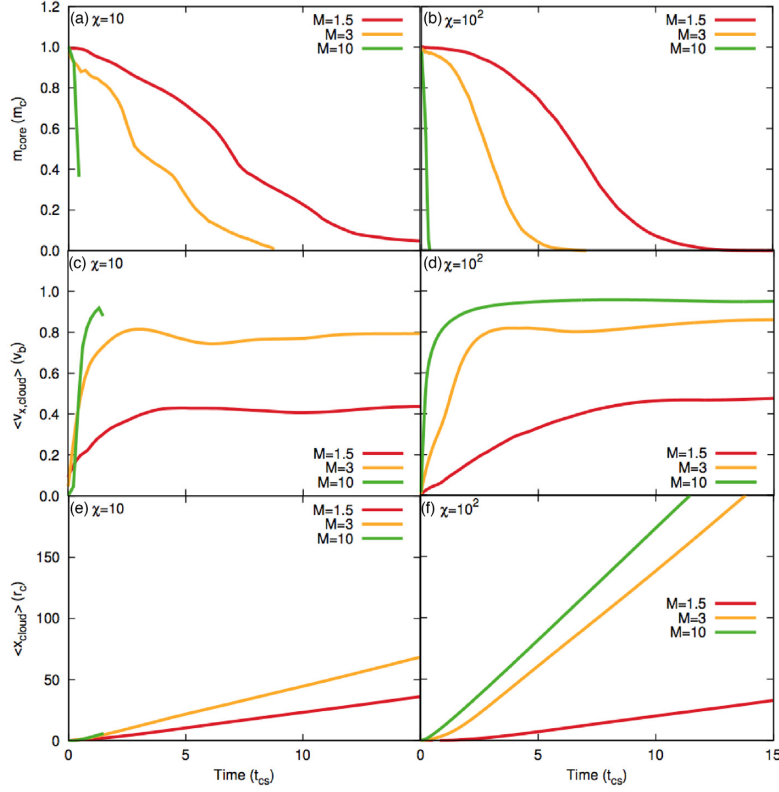


Figure 17. The Mach number dependence of the evolution of m_{core} , $\langle v_{x,\text{cloud}} \rangle$, and $\langle x_{\text{cloud}} \rangle$, for filaments with $l = 8 r_c$ and oriented sideways to the shock front.

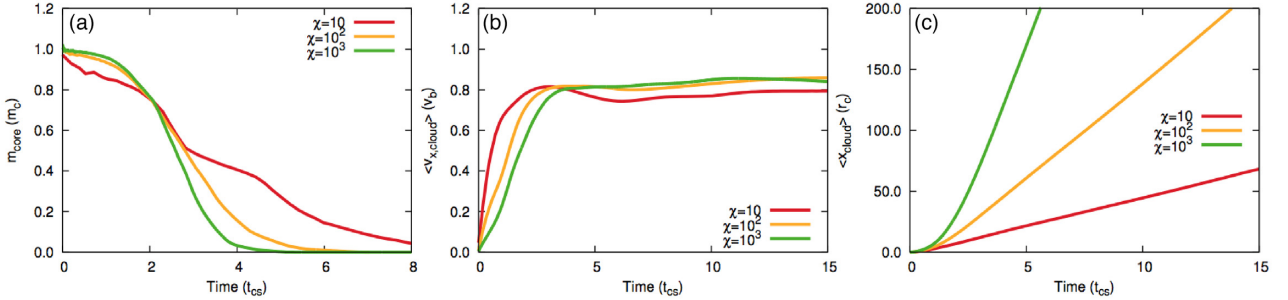


Figure 18. The χ dependence of the evolution of m_{core} , $\langle v_{x,\text{cloud}} \rangle$, and $\langle x_{\text{cloud}} \rangle$, for $M = 3$ and filaments with $l = 8 r_c$ and oriented sideways to the shock front.

the movement of the filament centre of mass downstream. When $\chi = 10^3$ the filament experiences a rapid acceleration of its centre of mass, whereas when $\chi = 10$ it is far slower to move downstream (normalized to t_{cs}). Again, this figure compares well to fig. 33 in Pittard & Goldsmith (2016).

4.5.1 Time-scales

Figs 19 and 20 show values of t_{drag} and t_{mix} , respectively, for simulations with $M = 1.5$, $M = 3$, and $M = 10$ and $\chi = 10^2$, as a function of both the filament length and orientation. Panel (a) of each figure shows values taken from simulations where the filament is oriented sideways to the shock front and where the filament length is varied. Panel (b) of each figure shows values taken from simulations where the filament is oriented obliquely (i.e. at $\theta = 30^\circ$) and the length varied. Panel (c) shows values taken from simulations where the filament has length $l = 8$ but its angle of orientation is varied.

Values for both time-scales (along with the filament lifetime) are also noted in Table 1.

Figs 19(a) and (b) shows that filaments in quasi-isothermal simulations with $M = 3$ and $M = 10$ have smaller values of t_{drag} compared to those in the adiabatic $M = 10$ simulations presented in Pittard & Goldsmith (2016), indicating that isothermal filaments are accelerated at a faster rate. t_{drag} increases with decreasing Mach number, as the interaction becomes more gentle. There is also a trend in both the adiabatic and isothermal results for t_{drag} to decrease as the filament length increases, though this effect is most visible in the $M = 1.5$ quasi-isothermal simulations. Filaments orientated at $\theta = 30^\circ$ to an $M = 3$ shock front show slower acceleration than sideways-oriented filaments. However, the filament acceleration in simulations with $M = 10$ and $M = 1.5$ is comparable for sideways-on and oblique filaments with $\theta = 30^\circ$. Panel (c) shows that t_{drag} increases with increasing angle of orientation for simulations with $M = 1.5$ and $M = 3$ until $\theta = 60^\circ$ when it begins to tail off,

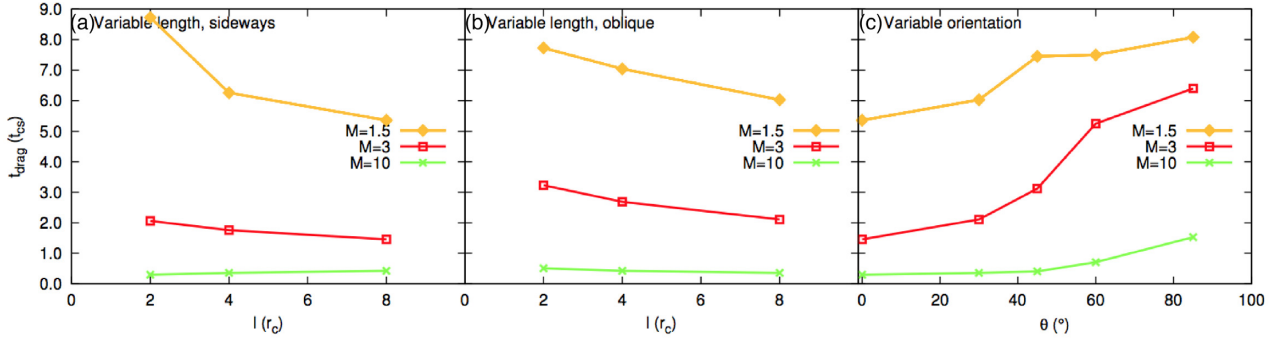


Figure 19. t_{drag} as a function of the filament length (left-hand and middle panels) and orientation (right-hand panel), from simulations with varying Mach number and $\chi = 10^2$. The ‘oblique’ simulation results noted in the middle panel are for $\theta = 30^\circ$, while the right-hand panel is for filaments with $l = 8$.

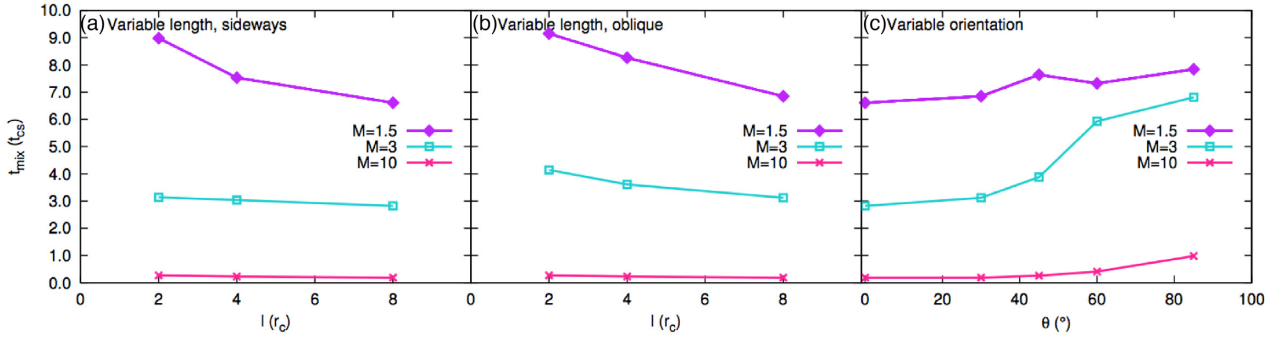


Figure 20. t_{mix} as a function of the filament length (left-hand and middle panels) and orientation (right-hand panel), from simulations with varying Mach number and $\chi = 10^2$. The ‘oblique’ simulation results noted in the middle panel are for $\theta = 30^\circ$, while the right-hand panel is for filaments with $l = 8$.

which is broadly in line with the adiabatic results presented in Pittard & Goldsmith (2016). However, the results for simulations with $M = 10$ do not exhibit such a tailing-off. It is clear that filaments in simulations where $M = 10$ have very rapid acceleration regardless of the orientation or length of the filament (though their acceleration is less rapid as the filament becomes oriented more end-on).

Figs 20(a) and (b) show a general trend for t_{mix} to decrease with increasing filament length for sideways and oblique filaments in simulations where $M = 1.5$ and $M = 3$. Sideways orientated filaments experience mixing of core material on a slightly shorter time-scale compared to obliquely orientated filaments. Panel (c) shows that t_{mix} increases with the angle of orientation. There is no reduction when the filament is oriented at $\theta = 85^\circ$ (cf. the adiabatic results in fig. 34 in Pittard & Goldsmith 2016). The $M = 3$ simulations show far more variety in mixing times compared to simulations with higher or lower Mach numbers. It is noticeable that the mixing times of filaments in simulations with $M = 10$ are extremely low. Only as the angle of orientation of the filament exceeds $\theta = 30^\circ$ is there any increase in t_{mix} for these filaments.

5 SUMMARY AND CONCLUSIONS

In this study we investigated the HD interaction of a quasi-isothermal shock with a filament in a non-magnetized medium. This work extends the work previously presented in Pittard & Goldsmith (2016) into an isothermal regime where $\gamma = 1.01$, and complements the MHD adiabatic shock-filament results presented in Goldsmith & Pittard (2016). We performed 3D calculations in which we varied the filament length and angle of orientation to the shock front and

investigated the nature of the interaction when the shock Mach number or cloud density contrast were varied. We note the following conclusions:

- (i) Only sideways oriented filaments with $\chi = 10^2$ form a three-rolled structure, in contrast to the findings of Pittard & Goldsmith (2016). Filaments oriented at other angles to the shock front instead form elongated structures with turbulent wakes and their morphology is dominated by the formation of a vortex ring at the upstream end of the filament. Filaments with different values of χ are bent into a ‘C’ shape;
- (ii) The greater the angle of orientation, the longer and less turbulent the wake, with the filament core in model *m3c2l885* becoming highly elongated and remaining relatively intact for some considerable time. Such filaments do not spill turbulent core material from their upper end but rather lose material smoothly from the filament sides;
- (iii) Most filaments showed a tendency for turbulent stripping of cloud material and the loss of clumps of material to the flow during the initial stages of the interaction. However, the filament oriented at $\theta = 85^\circ$ shows no such tendency towards fragmentation in the early stages (up until at least $t \approx 3 t_{\text{cs}}$), thus indicating the longer lived nature of this filament;
- (iv) We find that filament length is not important for mass-loss when the filament is oriented sideways. However, the orientation of the filament has a significant effect: there is a clear differentiation when the angle of orientation is varied, with those filaments oriented at angles $\theta \geq 60^\circ$ much slower to lose mass than those with smaller angles of orientation. This split between small and large angles of

orientation is also evident in the movement of the core centre of mass in the x direction and in the average velocity in the x direction;

(v) Values of $t_{\text{drag}}/t_{\text{cs}}$ for sideways and oblique filaments decline as the filament length increases. Filaments in a quasi-isothermal interaction have smaller values of $t_{\text{drag}}/t_{\text{cs}}$ (i.e. are accelerated faster) than filaments in an adiabatic interaction. Sideways filaments are accelerated faster than obliquely oriented ones. When the filament angle of orientation is varied, t_{drag} increases as the angle is increased. t_{mix} shows similar results to the above;

(vi) The normalized evolution of the filament becomes significantly more rapid at high Mach numbers ($M = 10$) due to the hugely powerful impact of a high Mach number isothermal shock.

ACKNOWLEDGEMENTS

This work was supported by the Science & Technology Facilities Council (STFC) (Research Grants ST/L000628/1 and ST/M503599/1). We thank S. Falle for the use of the MG hydrodynamics code used to calculate the simulations in this work and S. van Loo for adding SILO output to it. The calculations used in this paper were performed on the DiRAC1 Facility at Leeds, which is jointly funded by STFC, the Large Facilities Capital Fund of the Department of Business, Innovation and Skills, and the University of Leeds. The 3D volumetric renderings were created using the VisIt visualisation and data analysis software (Childs et al. 2012). The data associated with this paper are available from the University of Leeds data repository (<https://doi.org/10.5518/573>).

REFERENCES

- André Ph. et al., 2010, *A&A*, 518, L102
 Arzoumanian D. et al., 2011, *A&A*, 529, L6
 Banda-Barragán W. E., Parkin E. R., Crocker R. M., Federrath C., Bicknell G. V., 2016, *MNRAS*, 455, 1309
 Banda-Barragán W. E., Federrath C., Crocker R. M., Bicknell G. V., 2018, *MNRAS*, 473, 3454
 Banda-Barragán W. E., Zertuche F. J., Federrath C., García Del Valle J., Brüggem M., Wagner A. Y., 2019, *MNRAS*, 486, 4526
 Childs H. et al., 2012, in Wes Bethel E., Childs H., Hansen C., eds, *VisIt: An End-User Tool For Visualizing and Analyzing Very Large Data*. Chapman & Hall/CRC Computational Science. Taylor & Francis, UK, p. 357
 Chira R. A., Kainulainen J., Ibáñez-Mejía J. C., Henning T., Mac Low M. M., 2018, *A&A*, 610, A62
 Cooper J. L., Bicknell G. V., Sutherland R. S., Bland-Hawthorn J., 2008, *ApJ*, 674, 157
 Cooper J. L., Bicknell G. V., Sutherland R. S., Bland-Hawthorn J., 2009, *ApJ*, 703, 330
 Di Cintio P., Gupta S., Casetti L., 2018, *MNRAS*, 475, 1137
 Falle S. A. E. G., 1991, *MNRAS*, 250, 581
 Fragile P. C., Murray S. D., Anninos P., van Breugel W., 2004, *ApJ*, 604, 74
 Fragile P. C., Anninos P., Gustafson K., Murray S. D., 2005, *ApJ*, 619, 327
 Goldsmith K. J. A., Pittard J. M., 2016, *MNRAS*, 461, 578
 Goldsmith K. J. A., Pittard J. M., 2017, *MNRAS*, 470, 2427
 Grønnow A., Tepper-García T., Bland-Hawthorn J., McClure-Griffiths N. M., 2017, *ApJ*, 845, 69
 Heigl S., Burkert A., Hacar A., 2016, *MNRAS*, 463, 4301
 Hosseinirad M., Abbassi S., Roshan M., Naficy K., 2018, *MNRAS*, 475, 2632
 Jiang B., Chen Y., Wang J., Su Y., Zhou X., Safi-Harb S., DeLaney T., 2010, *ApJ*, 712, 1147
 Johansson E. P. G., Ziegler U., 2013, *ApJ*, 766, 45
 Klein R. I., McKee C. F., Colella P., 1994, *ApJ*, 420, 213
 Konyves V. et al., 2015, *A&A*, 584, A91
 Larson R. B., 1985, *MNRAS*, 214, 379

- Larson R. B., 2005, *MNRAS*, 359, 211
 Li Y., Klessen R. S., Mac Low M.-M., 2003, *ApJ*, 592, 975
 Li S., Frank A., Blackman E. G., 2013, *ApJ*, 774, 133
 Mac Low M.-M., McKee C. F., Klein R. I., Stone J. M., Norman M. L., 1994, *ApJ*, 433, 757
 McEwen B. C., Pihlström Y. M., Sjouwerman L. O., 2016, *ApJ*, 826, 189
 Mellema G., Kurk J. D., Röttgering H. J. A., 2002, *A&A*, 395, L13
 Michiyama T. et al., 2018, *ApJ*, 868, 95
 Myers P. C., 2011, *ApJ*, 735, 82
 Nakamura F., McKee C. F., Klein R. I., Fisher R. T., 2006, *ApJ*, 164, 477
 Orlando S., Peres G., Reale F., Bocchino F., Rosner R., Plewa T., Siegel A., 2005, *A&A*, 444, 505
 Orlando S., Bocchino F., Reale F., Peres G., Pagano P., 2008, *ApJ*, 678, 274
 Ostriker J., 1964, *ApJ*, 140, 1056
 Pittard J. M., Goldsmith K. J. A., 2016, *MNRAS*, 458, 1139
 Pittard J. M., Parkin E. R., 2016, *MNRAS*, 457, 4470
 Pittard J. M., Dyson J. E., Falle S. A. E. G., Hartquist T. W., 2005, *MNRAS*, 361, 1077
 Pittard J. M., Falle S. A. E. G., Hartquist T. W., Dyson J. E., 2009, *MNRAS*, 394, 1351
 Pittard J. M., Hartquist T. W., Falle S. A. E. G., 2010, *MNRAS*, 405, 821
 Putman M. E., Peek J. E. G., Joung M. R., 2012, *ARA&A*, 50, 491
 Raga A., Steffen W., González R., 2005, *Rev. Mex.*, 41, 45
 Roy A. et al., 2015, *A&A*, 584, 111
 Schisano E. et al., 2014, *ApJ*, 791, 27
 Schneider N. et al., 2012, *A&A*, 540, L11
 Schneider S., Elmegreen B. G., 1979, *ApJS*, 41, 87
 Shin M.-S., Stone J. M., Snyder G. F., 2008, *ApJ*, 680, 336
 Slane P., Bykov A., Ellison D. C., Dubner G., Castro D., 2015, *Space Sci. Rev.*, 188, 187
 Toci C., Galli D., 2015, *MNRAS*, 446, 2110
 Van Loo S., Falle S. A. E. G., Hartquist T. W., 2010, *MNRAS*, 406, 1260
 Veilleux S., Cecil G., Bland-Hawthorn J., 2005, *ARA&A*, 43, 769
 Vink J., 2012, *Astron. Astrophys. Rev.*, 20, 49
 Xu J., Stone J. M., 1995, *ApJ*, 454, 172
 Yirak K., Frank A., Cunningham A. J., 2010, *ApJ*, 722, 412
 Zhou X., Yang J., Fang M., Su Y., 2014, *ApJ*, 791, 109

APPENDIX A: RESOLUTION TEST

In the shock-filament interactions presented in this paper the fluid undergoes rapid variations in time and space, and thus has turbulent-like characteristics. With flows of this nature it is important to conduct a resolution study to determine whether and at what resolution any convergence is seen. Previous work in the literature has indicated that 32–64 cells per cloud radius is needed to capture the main flow features and for reasonable convergence of some key global quantities in interactions of a shock with a spherical cloud (Pittard & Parkin 2016). For shock-filament interactions, Pittard & Goldsmith (2016) found that 16 cells per filament semiminor axis (i.e. a resolution of R_{16}) captures the main morphological features of the interaction, but that R_{32} is the minimum needed for a more accurate description of the flow. They also found that the time evolution of m_{core} and $\langle v_{x,\text{cloud}} \rangle$ are reasonably converged by $R_{16} - R_{32}$, and that t_{mix} and t_{drag} are broadly constant at resolutions of at least R_8 (though t_{mix} generally declines with increasing resolution).

In the following we perform a resolution of our new isothermal shock-filament simulations.

A1 Time evolution

Fig. A1 shows the time evolution of the core mass, m_{core} , and the mean filament speed, $\langle v_{x,\text{cloud}} \rangle$, for a number of simulations where $M = 3$, $\chi = 10^2$, and the filament length $l = 8r_c$. The orientation of the filament to the shock is either sideways on,

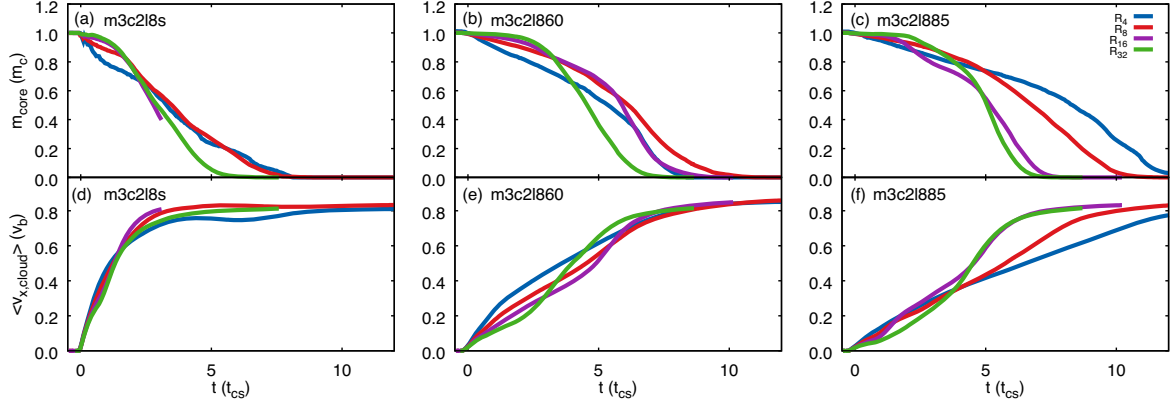


Figure A1. Time evolution of the core mass, m_{core} , and the mean filament speed, $\langle v_{x,\text{cloud}} \rangle$, for simulations (a) $m3c2l8s$, (b) $m3c2l860$, and (c) $m3c2l885$.

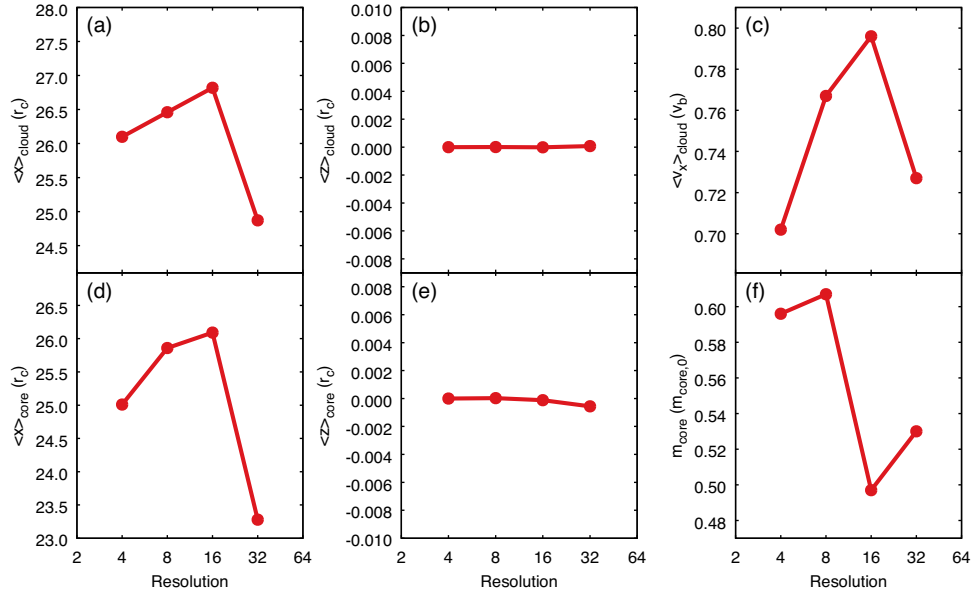


Figure A2. Integral quantities from simulation $m3c2l8s$ at $t = 2.8 t_{\text{cs}}$, plotted as a function of the grid resolution.

or at an angle of 60° or 85° (the latter being nearly end-on). In all cases the R_4 and R_8 resolution simulations tend to evolve somewhat differently to the R_{16} and R_{32} simulations. The R_{16} and R_{32} simulations are reasonably coincident for the $m3c2l8s$ and $m3c2l885$ scenarios, but show greater divergence for the $m3c2l860$ simulation.

A2 Convergence tests

To gain further insight into the effect of the grid resolution on our simulations we examine the variation of some integral quantities computed from the data sets at a particular moment in time. Formal convergence demands that there is an asymptotic levelling off with increasing resolution of a particular quantity.

The variation in $\langle x \rangle_{\text{cloud}}$, $\langle z \rangle_{\text{cloud}}$, $\langle v_x \rangle_{\text{cloud}}$, $\langle x \rangle_{\text{core}}$, $\langle z \rangle_{\text{core}}$, and m_{core} with the spatial resolution for simulation $m3c2l8s$ is shown in Fig. A2. It is clear that there is no sign of convergence.

Figs A3 and A4 examine the convergence properties for simulations $m3c2l845$ and $m3c2l860$. The former shows signs of conver-

gence in $\langle x \rangle_{\text{cloud}}$ and m_{core} . The latter shows signs of convergence in $\langle x \rangle_{\text{cloud}}$, $\langle v_x \rangle_{\text{cloud}}$, and $\langle x \rangle_{\text{core}}$. However, in general the simulations do not show signs of convergence.

A3 Time-scales

Figs A5 and A6 examine the resolution dependence of t_{drag} and t_{mix} . Both quantities are broadly stable with increasing resolution for simulation $m3c2l8s$. However, there are significant changes in the values of these quantities from R_{16} to R_{32} in simulation $m3c2l860$. In contrast, in simulation $m3c2l885$, t_{drag} and t_{mix} both decline significantly with increasing resolution from R_4 to R_{16} , but then have nearly identical values at R_{16} and R_{32} .

Our conclusion from this study is that our simulations are generally not converged at R_{32} , though some properties might be close to being so. Higher resolution simulations are needed in order to further extend this study and to draw more robust conclusions.

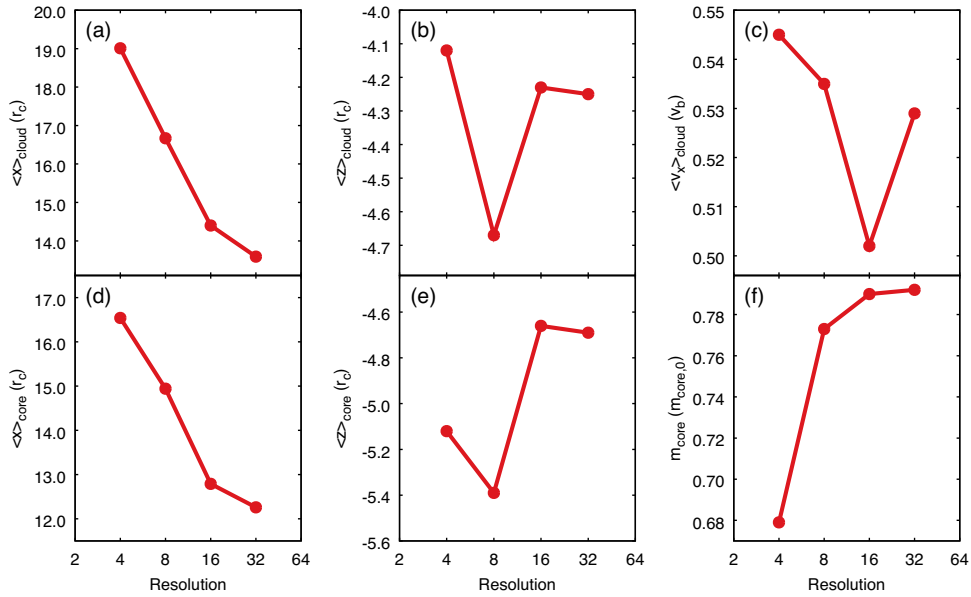


Figure A3. As Fig. A2 but for simulation *m3c21845*.

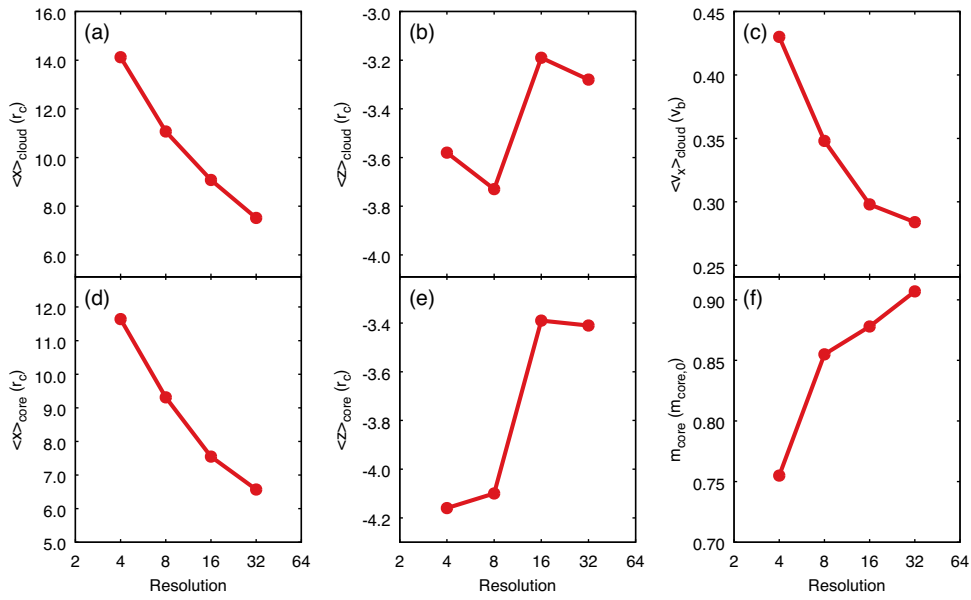


Figure A4. As Fig. A2 but for simulation *m3c21860*.

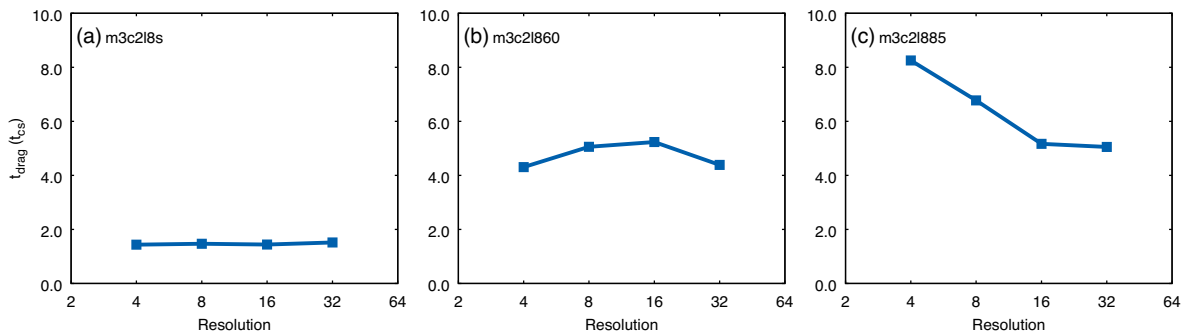


Figure A5. Resolution dependence of t_{drag} (for the cloud) for simulations (a) *m3c2188s*; (b) *m3c21860*; (c) *m3c21885*.

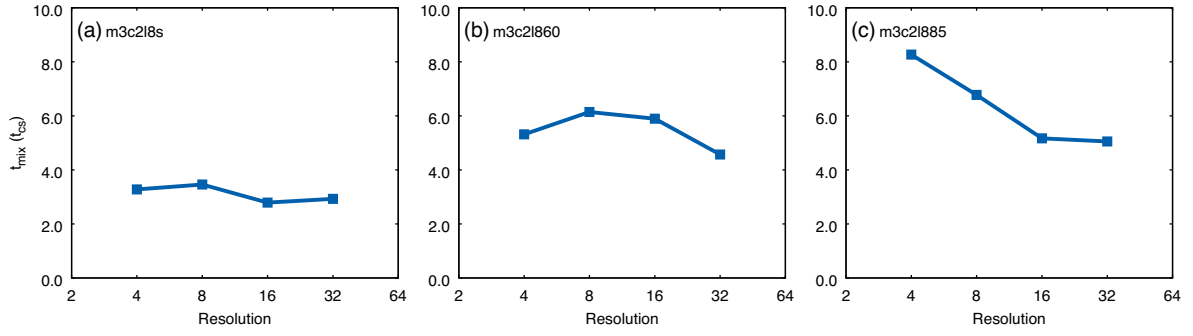


Figure A6. Resolution dependence of t_{mix} (for the core) for simulations (a) *m3c218s*; (b) *m3c21860*; (c) *m3c21885*.

This paper has been typeset from a $\text{\TeX}/\text{\LaTeX}$ file prepared by the author.