



Deposited via The University of Sheffield.

White Rose Research Online URL for this paper:

<https://eprints.whiterose.ac.uk/id/eprint/162021/>

Version: Accepted Version

---

**Article:**

Baidžajevas, K., Hadadi, É., Lee, B. et al. (2020) Macrophage polarisation associated with atherosclerosis differentially affects their capacity to handle lipid. *Atherosclerosis*, 305. pp. 10-18. ISSN: 0021-9150

<https://doi.org/10.1016/j.atherosclerosis.2020.05.003>

---

Article available under the terms of the CC-BY-NC-ND licence  
(<https://creativecommons.org/licenses/by-nc-nd/4.0/>).

**Reuse**

This article is distributed under the terms of the Creative Commons Attribution-NonCommercial-NoDerivs (CC BY-NC-ND) licence. This licence only allows you to download this work and share it with others as long as you credit the authors, but you can't change the article in any way or use it commercially. More information and the full terms of the licence here: <https://creativecommons.org/licenses/>

**Takedown**

If you consider content in White Rose Research Online to be in breach of UK law, please notify us by emailing [eprints@whiterose.ac.uk](mailto:eprints@whiterose.ac.uk) including the URL of the record and the reason for the withdrawal request.



Manuscript Number: ATH-D-19-00697R2

Title: Macrophage polarisation associated with atherosclerosis differentially affects their capacity to handle lipid

Article Type: Research paper

Section/Category: Basic Research

Keywords: Inflammation, Atherosclerosis, Macrophage, Innate, Lipid

Corresponding Author: Dr. Heather Wilson,

Corresponding Author's Institution: University of Sheffield Medical School

First Author: Kajus Baidžajevs

Order of Authors: Kajus Baidžajevs; Éva Hadadi; Bernett Lee; Josephine Lum; Foo Shihui; Ian Sudbury; Endre Kiss-Tóth; Siew Cheng Wong; Heather Wilson

**Abstract: Background & Aims:** Lipid-rich foam cell macrophages drive atherosclerosis via several mechanisms, including inflammation, lipid uptake, lipid deposition and plaque vulnerability. The atheroma environment shapes macrophage function and phenotype; anti-inflammatory macrophages improve plaque stability while pro-inflammatory macrophages promote rupture. Current evidence suggests a variety of macrophage phenotypes occur in atherosclerotic plaques with local lipids, cytokines, oxidised phospholipids and pathogenic stimuli altering their phenotype. In this study, we addressed differential functioning of macrophage phenotypes via a systematic analysis of in vitro polarised, human monocyte-derived macrophage phenotypes, focussing on molecular events that regulate foam-cell formation.

**Methods:** We examined transcriptomes, protein levels and functionally determined lipid handling and foam cell formation capacity in macrophages polarised with IFN $\gamma$ +LPS, IL-4, IL-10, oxPAPC and CXCL4.

**Results:** RNA sequencing of differentially polarised macrophages revealed distinct gene expression changes, with enrichment in atherosclerosis and lipid-associated pathways. Analysis of lipid processing activity showed IL-4 and IL-10 macrophages have higher lipid uptake and foam cell formation activities, while inflammatory and oxPAPC macrophages displayed lower foam cell formation. Inflammatory macrophages showed low lipid uptake, while higher lipid uptake in oxPAPC macrophages was matched by increased lipid efflux capacity.

**Conclusions:** Atherosclerosis-associated macrophage polarisation dramatically affects lipid handling capacity underpinned by major transcriptomic changes and altered protein levels in lipid-handling gene expression. This leads to phenotype-specific differences in LDL uptake, cellular cholesterol levels and cholesterol efflux, informing how the plaque environment influences atherosclerosis progression by influencing macrophage phenotypes.

Research Data Related to this Submission

-----  
Title: Data for: Macrophage polarisation associated with atherosclerosis  
differentially affects their capacity to handle lipid

Repository: Mendeley Data

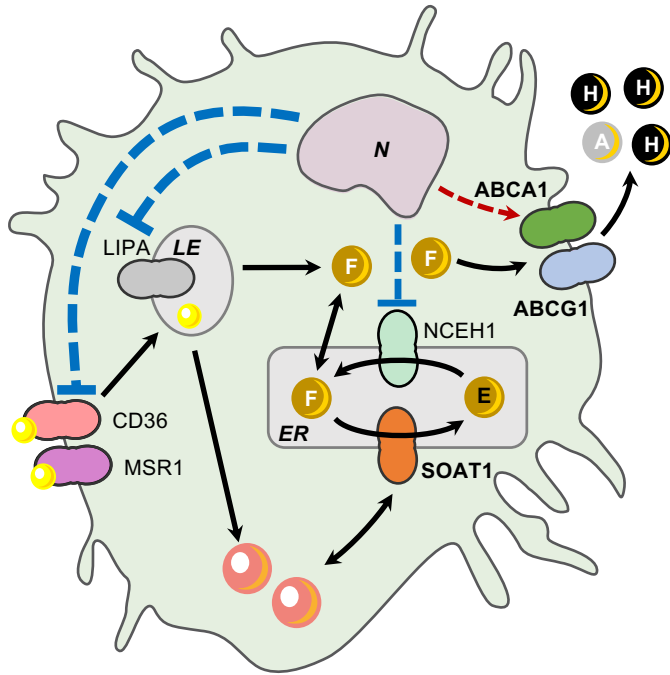
<https://data.mendeley.com/datasets/snwtjhx7h3/draft?a=f9f585e0-f497-4c9f-87aa-cb40823f91bc>

### Highlights:

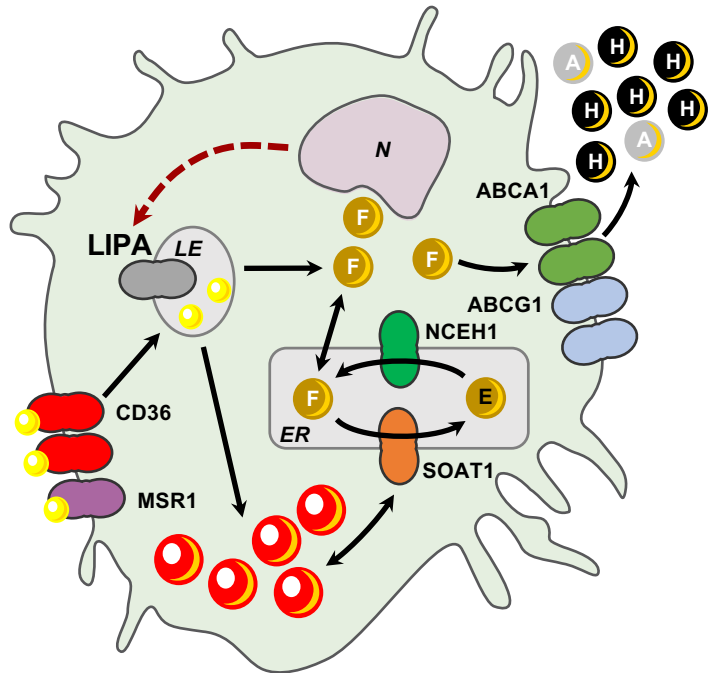
- Total RNA sequencing of differentially polarised macrophages showed enrichment in genes associated with atherosclerosis and lipid pathways
- Anti-inflammatory macrophages had higher lipid uptake and foam cell formation activities
- Inflammatory and oxPAPC macrophages displayed lower foam cell formation
- Inflammatory macrophages showed low lipid uptake, while higher lipid uptake in oxPAPC macrophages was matched by increased lipid efflux capacity

Graphical abstract

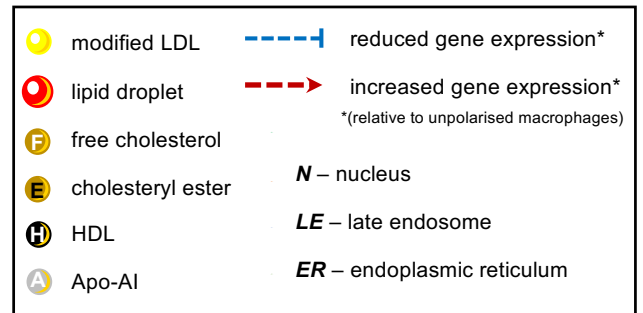
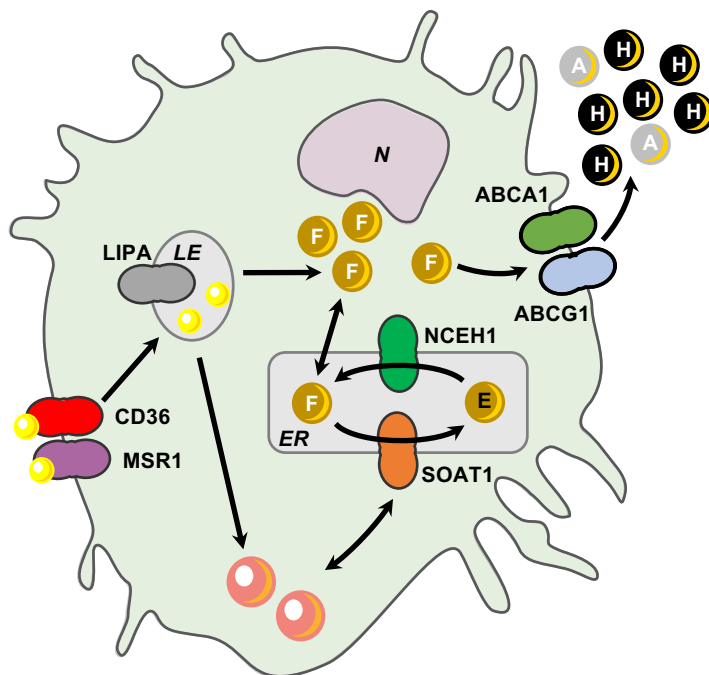
**A. M<sup>IFN $\gamma$ +LPS</sup>:** lower cholesterol uptake, storage & efflux



**B. M<sup>IL-4/IL-10</sup>:** high cholesterol uptake, storage & efflux



**C. M<sup>oxPAPC</sup>:** moderate cholesterol uptake/processing, high efflux



1  
2  
3  
4  
5  
6  
7 **Macrophage polarisation associated with atherosclerosis differentially affects**  
8 **their capacity to handle lipid**  
9

10  
11  
12 Short Title: Macrophage polarisation & lipid handling capacity  
13

14 Kajus Baidžajevas\*<sup>a,b</sup>, Éva Hadadi\*<sup>a,b,c</sup>, Bernett Lee<sup>b</sup>, Josephine Lum<sup>b</sup>, Foo Shihui<sup>b</sup>,  
15 Ian Sudbery<sup>d</sup>, Endre Kiss-Tóth<sup>a</sup>, Siew Cheng Wong<sup>b§</sup>, Heather L Wilson<sup>a§</sup>.  
16  
17

18 \*These authors contributed equally.  
19

20 a Department of Infection, Immunity & Cardiovascular Disease, University of Sheffield, Beech Hill  
21 Road, Sheffield, S10 2RX, UK.  
22

23 b Singapore Immunology Network (SIgN), Agency for Science, Technology and Research (A\*STAR),  
24 Singapore.  
25

26 c Current address: INSERM U935, Villejuif, France.  
27

28 d Department of Molecular Biology and Biotechnology, University of Sheffield, Western Bank,  
29 Sheffield, S10 2TN, UK.  
30

31 §Corresponding authors:

32 Heather Wilson: Department of Infection, Immunity & Cardiovascular Disease, University of  
33 Sheffield, Beech Hill Road, Sheffield, S10 2RX, UK. Tel. + 44 114 215 9560. Email:  
34 [H.L.Wilson@sheffield.ac.uk](mailto:H.L.Wilson@sheffield.ac.uk)  
35

36 Siew Cheng Wong: Singapore Immunology Network (SIgN), Agency for Science, Technology and  
37 Research (A\*STAR), 8A Biomedical Grove, Immunos, Level 4, Singapore 138648. Tel:  
38 +65 6407 0030. Email: [wong\\_siew\\_cheng@immunol.a-star.edu.sg](mailto:wong_siew_cheng@immunol.a-star.edu.sg)  
39  
40  
41

42 Category: Original Research Paper / Basic Research Paper.  
43  
44

45 Keywords: Inflammation, Atherosclerosis, Macrophage, Innate  
46

47 Total word count (main text, excluding references, including Figure legends): 3,940.  
48  
49  
50  
51  
52  
53  
54  
55  
56  
57  
58  
59  
60  
61  
62  
63  
64  
65

1  
2  
3  
4 **(ii) Abstract**

5 *Background & Aims:* Lipid-rich foam cell macrophages drive atherosclerosis via several mechanisms,  
6 including inflammation, lipid uptake, lipid deposition and plaque vulnerability. The atheroma  
7 environment shapes macrophage function and phenotype; anti-inflammatory macrophages improve  
8 plaque stability while pro-inflammatory macrophages promote rupture. Current evidence suggests a  
9 variety of macrophage phenotypes occur in atherosclerotic plaques with local lipids, cytokines,  
10 oxidised phospholipids and pathogenic stimuli altering their phenotype. In this study, we addressed  
11 differential functioning of macrophage phenotypes via a systematic analysis of *in vitro* polarised,  
12 human monocyte-derived macrophage phenotypes, focussing on molecular events that regulate foam-  
13 cell formation.  
14

15 *Methods:* We examined transcriptomes, protein **levels** and functionally determined lipid handling and  
16 foam cell formation capacity in macrophages polarised with IFN $\gamma$ +LPS, IL-4, IL-10, oxPAPC and  
17 CXCL4.  
18

19 *Results:* RNA sequencing of differentially polarised macrophages revealed distinct gene expression  
20 changes, with enrichment in atherosclerosis and lipid-associated pathways. Analysis of lipid  
21 processing activity showed IL-4 and IL-10 macrophages have higher lipid uptake and foam cell  
22 formation activities, while inflammatory and oxPAPC macrophages displayed lower foam cell  
23 formation. Inflammatory macrophages showed low lipid uptake, while higher lipid uptake in oxPAPC  
24 macrophages was matched by increased lipid efflux capacity.  
25

26 *Conclusions:* Atherosclerosis-associated macrophage polarisation dramatically affects lipid handling  
27 capacity underpinned by major transcriptomic changes and altered protein levels in lipid-handling gene  
28 expression. This leads to phenotype-specific differences in LDL uptake, cellular cholesterol levels and  
29 cholesterol efflux, informing how the plaque environment influences atherosclerosis progression by  
30 influencing macrophage phenotypes.  
31  
32  
33  
34  
35  
36  
37  
38  
39  
40  
41  
42  
43  
44  
45  
46  
47  
48  
49  
50  
51  
52  
53  
54  
55  
56  
57  
58  
59  
60  
61  
62  
63  
64  
65

## 1. Introduction

Arterial macrophages form disease-associated lipid-rich foam cells in atherosclerotic plaques [1]. Progressive atherosclerosis results in cardiovascular diseases, which are a leading cause of death, worldwide [2]. Plaque formation arises from the accumulation of lipid in the artery wall over decades; acute myocardial infarction or stroke can occur following a loss of plaque stability due to cellular changes in the artery wall [3]. Macrophages are a predominant cell type within the artery wall, whose major functions in the plaque are to regulate inflammation, clear apoptotic cells via efferocytosis, regulate plaque stability by secreting matrix metalloproteases (MMPs) or protease inhibitors and to uptake, process, accumulate and efflux lipid [4]. The capacity of macrophages to accumulate or process lipid and to regulate proteases and cytokines in their local environment is a critical determinant of plaque development, lipid core formation and plaque stability [5,6].

Macrophages regulate lipoproteins within their local environment [7]. Uptake of lipoproteins occurs via receptor-mediated endocytosis, such as scavenger receptor, pinocytosis and phagocytosis [4]. Macrophages express scavenger receptors including SR-A1, CD36 and LOX-1 for lipoprotein uptake [8], while phagocytosis mediated internalisation delivers lipids to late endolysosomes where lysosomal acid lipase (LAL) digests cholesteryl esters to produce free cholesterol [9]. In the case of lipoprotein, cellular lipases such as LAL break down the lipoprotein particles that have been taken up, to cholesterol, triglycerides and fatty acids [10–12]. Cholesteryl esters and acylglycerides can be stored in lipid droplets, resulting in foam cell formation. Alternatively, Neutral cholesterol ester hydrolase (NCEH1) can metabolise these molecules into free cholesterol [13–15]; this can be removed from the cell by efflux or converted to fatty acids (oxidised to produce ATP) and glycerol [14,15]. Sterol O-acyltransferase 1 (SOAT1) in the endoplasmic reticulum can re-esterify free cholesterol into cholesterol ester or fatty acids into acylglycerides, for subsequent storage in lipid droplets [4,16–18]. Cholesterol, produced by NCEH1, is then effluxed from the cell by transporters ABCA1, ABCG1 and SR-BI [19] or re-esterified and stored as lipid droplets [19]. The build-up of cellular cholesterol activates transcription factors RXR, LXR $\alpha$ , LXR $\beta$ , PPAR $\alpha$  and PPAR $\gamma$  [20]. Heterodimerisation of LXR and RXR increases protein levels of ABCA1 and ABCG1, which actively transport HDL loaded-cholesterol out of the cell [19]. The cytosolic accumulation of esterified cholesterol and acylglyceride droplets in macrophages results in the generation of foam cells, driving atherosclerotic plaque formation [9]. In addition to lipid uptake and intracellular processing, lipid and cholesterol content are influenced by the cellular capacity for cholesterol efflux. These efflux pathways in macrophages function to remove excess lipid to prevent its accumulation, which can be cytotoxic [21–23].

The local cellular environment determines macrophage function and phenotype [24]. Traditionally, macrophages have been described as classically activated M1 and alternatively activated M2 macrophages [24]. Pro-inflammatory M1 macrophages arise from exposure to bacterial LPS and interferon-gamma [25]. Cytokines such as IL-4 and IL-13 drive polarisation to M2 macrophages [26]. In arterial atherosclerotic plaques, pro-inflammatory macrophages localise to areas of increased vulnerability, such as the shoulder regions [27]. In these vulnerable areas, they promote rupture by secreting MMPs and inflammatory cytokines thus weakening the cap structure [27]. In contrast, anti-inflammatory macrophages are associated with increased plaque stability, at times with plaque regression and less severe disease [1]. The traditional classification of M1 and M2 macrophages is now widely understood to be simplistic where other “intermediate” or differently polarised phenotypes exist according to the local environment [25]. Macrophages expressing markers for both M1 and M2 phenotypes have been labelled within atherosclerotic plaques [25]. The plaque environment contains

1  
2  
3  
4 oxidised phospholipid [28], platelet-derived CXCL4 [29] and IL-10 [26] as well as haemoglobin [30],  
5 which can each influence macrophages to polarise to different functional states.  
6

7  
8 The accumulation of lipid within the macrophage, and propensity to form foam cells, is altered  
9 according to macrophage phenotype [31]. Pro-inflammatory stimuli have been reported to alter  
10 expression of some scavenger receptors [32] [33] and to reduce cholesterol efflux transporter  
11 expression [34], reducing their capacity to clear lipid from the plaque. In contrast, IL-4 macrophages  
12 are considered to have high lipid handling and foam cell formation capacities [35]. The effect of IL-  
13 10, CXCL4 and oxidised phospholipid on human macrophage lipid handling is less well understood.  
14  
15

16  
17 Compelling evidence shows that a variety of macrophage phenotypes occur in atherosclerotic plaques  
18 dependent on their environment. However, it is noteworthy that the majority of our current  
19 understanding of macrophage polarisation and its impact on atherosclerosis derives from murine  
20 models of atherosclerosis and analysis of mouse bone marrow derived macrophages [36,37]. The  
21 relevance to some of these findings to atherogenesis in humans is less clear. For example, whilst *Nos2*  
22 and *Arg1* expression are robust markers of proinflammatory vs. alternatively activated macrophages,  
23 expression of these genes does not correlate with such macrophage subsets in humans [38–40]. In  
24 order to address how the variety of plaque macrophage phenotypes function differentially, we  
25 undertook a systematic study to model human macrophages polarised towards factors relevant to the  
26 atherosclerotic plaque environment. Using human samples, we sequenced and analysed whole  
27 transcriptomes, protein levels and functionally determined lipid handling and foam cell formation  
28 capacity in human macrophages polarised with IFN $\gamma$ +LPS, IL-4, IL-10, oxPAPC (oxidised  
29 phospholipid 1-palmitoyl-2-arachidonoyl-sn-glycero-3-phosphorylcholine macrophages) and CXCL4.  
30 Our data revealed transcriptionally distinct phenotypes, differential lipid uptake, processing and efflux  
31 capacities and functional differences to account for low foam cell formation in differentially polarised  
32 inflammatory macrophages.  
33  
34  
35  
36

## 37 **2. Materials and methods**

38 Detailed methods are described in supplementary information. In brief, peripheral blood mononuclear  
39 cells (PBMCs) were isolated from whole blood donated by healthy adult donors and monocytes  
40 purified by CD14 positive magnetic selection. Monocytes were differentiated into monocyte-derived  
41 macrophages (MDMs) over 7 days in M-CSF, resulting in CD68+ macrophages expressing receptors  
42 for polarising agents (Supplementary methods; Supplementary Table 1). On day 7, the media was  
43 replaced for 24 h with fresh complete media containing the following polarising agents: IFN $\gamma$  and LPS  
44 (R515); IL-4; IL-10; oxPAPC; CXCL4; or unpolarised as controls in each experiment (Supp.Fig.1).  
45 RNA was extracted from unpolarised and polarised MDM from 8 separate donors for RNA-seq  
46 analysis. RNA-seq data is deposited at DOI: 10.17632/j2hmt7k9fh.1. Differential gene expression was  
47 validated by qPCR, and protein by immunofluorescence and flow cytometry. Functional changes in  
48 foam cell formation and lipid handling were assessed by oil-red-o lipid staining, acLDL uptake,  
49 cholesterol content and efflux determination. Replicate values (n) represent separate human donors.  
50  
51  
52  
53

## 54 **3. Results**

### 55 **Polarisation causes atherosclerosis-related changes in MDM transcriptomes**

56  
57 We set out to systematically extend the current knowledge of transcriptional changes associated with  
58 macrophage polarisation by assessing gene expression changes specifically in *human* macrophage  
59  
60  
61  
62  
63  
64  
65

1  
2  
3  
4 phenotypes arising from the same donors, treated under a variety of conditions reflecting the arterial  
5 plaque environment. Monocyte-derived macrophages from 8 donors were polarised with IFN $\gamma$ +LPS,  
6 IL-4, IL-10, oxPAPC or CXCL4 and examined by RNA-seq for global and specific pathway changes  
7 in their transcriptomes that may influence atherosclerosis progression.  
8

9 Principal component analysis (PCA) clearly showed M<sup>IFN $\gamma$ +LPS</sup> as the most transcriptionally  
10 distinct phenotype with > 5,500 differentially expressed genes (DEGs) compared to unpolarised  
11 macrophages and to other phenotypes (Figure 1A). M<sup>IFN $\gamma$ +LPS</sup> displayed unique and high upregulation  
12 of common pro-inflammatory markers (Supplementary Tables 2 and 3). M<sup>IL-4</sup> was the next most  
13 transcriptionally distinct phenotype as evidenced by the PCA, and characterised by *IRF4* (interferon  
14 regulatory factor 4) and *MRC1* (mannose receptor C-type 1) upregulation. The PCA shows that  
15 M<sup>IFN $\gamma$ +LPS</sup> and M<sup>IL-4</sup> represent the extreme ends of the *in vitro* MDM polarisation spectrum, since they  
16 exhibited the highest number of differentially expressed genes amongst the polarisation conditions  
17 applied. Interestingly, in the PCA M<sup>IL-10</sup>, M<sup>oxPAPC</sup> and M<sup>CXCL4</sup> clustered more closely to unpolarised  
18 macrophages. Of note, M<sup>IL-10</sup>, M<sup>oxPAPC</sup> and M<sup>CXCL4</sup> also showed a cytokine/chemokine (and their  
19 regulators) expression profile, similar to M<sup>IL-4</sup>. These included a notably lower upregulation of *CXCL8*  
20 (*IL-8*), *CXCL9*, *CXCL11*, *IL1B*, *IL2RA* and *SOCS3* compared to M<sup>IFN $\gamma$ +LPS</sup>, but no changes in *IRF1*,  
21 *NFKB1*, *NFKB2*, *RELA* and *RELB* expression (Supplementary Table 4). M<sup>IL-10</sup> showed upregulation  
22 of *CD163* RNA, consistent with recent findings [41], while M<sup>oxPAPC</sup> was clearly distinguished by  
23 increased RNA for *HMOX1* (heme oxygenase 1) and *TXNRD1* (thioredoxin reductase 1).  
24

25 CXCL4 macrophages showed a remarkably similar transcriptome profile to unpolarised  
26 macrophages as indicated by their close clustering in PCA and only 207 DEGs (1.53% of transcripts  
27 detected from a total of 13,531 genes) between the two conditions (Figure 1B). These results were  
28 largely in agreement with transcriptomic data on human monocyte-derived macrophages with and  
29 without CXCL4 polarisation from another study[42], where monocyte differentiation into unpolarised  
30 macrophages and M<sup>CXCL4</sup> with M-CSF or CXCL4 respectively over 6 days resulted in only 460  
31 differentially expressed probes or 375 DEGs (1.77% out of 26,051 probes with signals above the  
32 detection limit [42]). *S100A8* (*S100 calcium binding protein A8*) and *MMP7* (*matrix metalloproteinase*  
33 *7*) have previously been reported as M<sup>CXCL4</sup> markers [43]; our RNA-seq data showed their expression  
34 in M<sup>CXCL4</sup> was highly variable among donors and was up-regulated in most other phenotypes,  
35 especially M<sup>IFN $\gamma$ +LPS</sup> (Supplementary Tables 2 and 3). Given this low difference between M<sup>CXCL4</sup> and  
36 unpolarised macrophage transcriptomes, we omitted M<sup>CXCL4</sup> from further analysis (Figure 1C, 1D).  
37

38 Each MDM phenotype displayed significant enrichment of DEGs in atherosclerosis-related  
39 pathways (Supplementary Table 5). In most phenotypes, these pathways included genes clearly  
40 involved in macrophage lipid handling, such as *ABCA1* (ATP binding cassette subfamily A member  
41 1), *ABCG1* (ATP binding cassette subfamily G member 1), *LPL* (lipoprotein lipase) and *MSR1*  
42 (macrophage scavenger receptor 1) prompting further investigation into the lipid handling capacity of  
43 these phenotypes. The RNA-sequencing results were validated by qRT-PCR on parallel samples  
44 (Supplementary Figure 3), confirming differences in selected atherosclerosis-related genes.  
45

### 46 **Reduced foam cell formation capacity in M<sup>IFN $\gamma$ +LPS</sup> and M<sup>oxPAPC</sup>**

47 Our transcriptome analyses of macrophage phenotypes revealed differences in lipid handling and other  
48 associated pathway enrichment for differentially expressed genes (Supplementary Table 5). We  
49 therefore sought to assess foam cell formation capacity of the various polarised macrophages since  
50 this underlies the pathophysiology of atherosclerosis [44]. After loading with acLDL, we measured  
51 foam cell formation by oil-red-O staining (measured as % control – % acLDL-loaded Area ORO >  
52  
53  
54  
55  
56  
57  
58  
59  
60  
61  
62  
63  
64  
65

1  
2  
3  
4 Area haematoxylin cells) in  $M^{IFN\gamma+LPS}$  and  $M^{oxPAPC}$ , while  $M^{IL-4}$  and  $M^{IL-10}$  showed an increase in foam  
5 cell formation, similar to that of unpolarised macrophages (Figures 2A & 2B).  
6  
7

### 8 **Reduced LDL uptake in $M^{IFN\gamma+LPS}$**

9 Since  $M^{IFN\gamma+LPS}$  and  $M^{oxPAPC}$  showed reduced foam cell formation compared to other phenotypes, we  
10 assessed lipoprotein uptake, which impacts macrophage lipid handling and resultant foam cell  
11 formation [45]. We therefore measured fluorescently-labelled acLDL uptake in the different MDM  
12 phenotypes by flow cytometry. Analysis of MDMs exposed to AlexaFluor-488-conjugated acLDL  
13 showed significantly lower uptake in  $M^{IFN\gamma+LPS}$  and non-significant reduction in  $M^{oxPAPC}$  ( $p = 0.10$ ). In  
14 contrast,  $M^{IL-4}$  and  $M^{IL-10}$  showed intracellular acLDL fluorescence levels similar to unpolarised  
15 macrophages (Figure 3A). **Using reactome.org analysis, in  $M^{IFN\gamma+LPS}$  we detected a global down-**  
16 **regulation of ‘Ligand binding and uptake by scavenger receptors’ pathways** (Figure 3B) and in key  
17 lipid uptake genes (Figure 3C), such as modified LDL receptors *CD36* (cluster of differentiation 36)  
18 and *MSR1* (macrophage scavenger receptor 1) [46,47]. This suggests that differential polarisation  
19 influences a transcriptional programme that affects downstream pathways regulating LDL uptake. **In**  
20 **agreement with this, a reduction in both CD36 and MSR1 scavenger receptors was detected at the cell**  
21 **surface protein level in  $M^{IFN\gamma+LPS}$  (Figure 3D).**  
22  
23  
24  
25

### 26 **Cellular free cholesterol content in polarised macrophages after LDL loading**

27 In addition to lipid uptake, macrophage foam cell formation capacity is influenced by the ability of the  
28 cell to regulate its internal lipid content. **Altering** the balance of internal lipid processing and storage  
29 may result in changes in total, free and esterified cholesterol content in macrophage phenotypes. While  
30  **$IFN\gamma$ -treated macrophages** have been shown to contain different levels of free cholesterol and its ester  
31 [48], the other phenotypes described in this study have not been assessed in this regard. We therefore  
32 measured the abundance of total, free and esterified cholesterol in control and acLDL-loaded cells to  
33 determine if intracellular cholesterol processing capacity affected differences in foam cell formation.  
34  
35

36 Unpolarised macrophages showed a larger change in total cholesterol ( $73.5 \pm 19.7$  ng  
37 cholesterol / ng protein), higher than for all polarisation-treated macrophage phenotypes (Figure 4A).  
38  $M^{IFN\gamma+LPS}$  exhibited no significant change in total cholesterol following loading ( $p = 0.10$  for the  
39 difference between this condition and unpolarised cells, Figure 4A). We also calculated the cholesterol  
40 ester content, but did not observe statistically significant differences in cholesterol ester by phenotype,  
41 when compared to unpolarised macrophages (Figure 4B). Similar to the total cholesterol changes,  
42  $M^{IFN\gamma+LPS}$  showed no significant differences ( $p = 0.11$ ) in the change of free cholesterol content (Figure  
43 4C).  
44  
45

46 We examined the ‘LDL clearance’ pathway for DEGs according to MDM polarisation, to  
47 identify transcriptional differences in the cholesterol clearance pathways. In agreement with the  
48 cholesterol content determination,  $M^{IFN\gamma+LPS}$  showed largely down-regulated expression of the entire  
49 clearance pathway (Figure 4D). Among key genes, *SOAT1* was not differentially expressed in any  
50 phenotype, whereas, expression of *NCEH1* was significantly reduced in  $M^{IFN\gamma+LPS}$  (Figure 4E), in  
51 keeping with the cholesterol content assessment. In addition, *LIPA* (lipase A, lysosomal acid type,  
52 involved in lipoprotein particle breakdown) showed reduced expression in  $M^{IFN\gamma+LPS}$  and increased in  
53  $M^{IL-4}$ , likely contributing to the differences in intracellular lipid handling between these phenotypes  
54 (Figure 4E).  
55  
56  
57

### 58 **Reduced cholesterol efflux capacity in $M^{IFN\gamma+LPS}$**

1  
2  
3  
4 **Lipid and cholesterol content are influenced by the cellular capacity for cholesterol efflux.**  
5 Macrophages mainly unload intracellular lipid to apolipoprotein AI (Apo-AI) via ABCA1 transporter  
6 while high-density lipoprotein (HDL) is capable of accepting lipid from ABCG1, SCARB1 (scavenger  
7 receptor class B member 1) [49] and other pathways. Previous reports indicated that pro-inflammatory  
8 macrophages had lower cholesterol efflux capacity [34] than anti-inflammatory macrophages [50]. We  
9 tested cholesterol efflux via both acceptors, 24 h after macrophage polarisation, to determine the  
10 reverse cholesterol transport capacity of each phenotype.  
11  
12

13 Total TopFluor cholesterol efflux, involving both Apo-AI and HDL, was significantly reduced  
14 in  $M^{IFN\gamma+LPS}$  while  $M^{IL-4}$  did not show a significantly altered efflux compared to unpolarised  
15 macrophages (Figure 5A).  $M^{IFN\gamma+LPS}$  also showed a significantly lower capacity to efflux cholesterol  
16 regardless of whether HDL or Apo-AI was used as cholesterol acceptor (Figure 5B and C).  $M^{IL-4}$   
17 showed no significant difference in cholesterol efflux capacity in the presence of Apo-AI compared  
18 to unpolarised macrophages (Figure 5C). Following polarisation, expression of key active cholesterol  
19 efflux receptors ABCA1 and ABCG1 in ‘HDL assembly’ and ‘HDL remodelling’ pathways (Figure  
20 5D) showed an opposite pattern (Figure 6E) from the downstream functional data (Figure 5A–C).  
21 Expression of the major passive cholesterol efflux receptor SCARB1 (functions via HDL) was  
22 significantly lower in  $M^{IFN\gamma+LPS}$ , but also uniquely increased in  $M^{IL-4}$  (Figure 5E), suggesting that  
23 expression of SCARB1 and the aforementioned ABC transporters are under different transcriptional  
24 regulation for lipid handling, post-polarisation. Protein **levels** of ABCA1 and ABCG1 upon MDM  
25 polarisation (Figure 5F) were similar to the cholesterol efflux capacities of each of the macrophage  
26 phenotypes (Figure 5A–C). SCARB1 cell-surface protein was uniquely up-regulated in  $M^{IL-4}$ ,  
27 matching our observations at the transcript level and further suggesting differences between regulation  
28 of ABCA1/ABCG1 and SCARB1 expression.  
29  
30  
31  
32  
33  
34

#### 35 **4. Discussion**

36  
37 Macrophages polarise to a spectrum of phenotypes in response to their environment [24]. This  
38 systematic study compared human macrophage lipid handling capacities at the transcriptome, protein  
39 and functional levels for cells polarised towards factors relevant to the atherosclerotic plaque  
40 environment. Polarisation with  $IFN\gamma+LPS$ ,  $IL-4$ ,  $IL-10$ ,  $oxPAPC$  and  $CXCL4$  identified distinct  
41 transcriptional changes,  $M^{IFN\gamma+LPS}$  being the most transcriptionally distinct phenotype in agreement  
42 with other related studies [51,52]. Transcriptional changes showed enrichment in atherosclerosis and  
43 lipid-associated pathways. Analysis of lipid processing activity showed  $M^{IL-4}$  and  $M^{IL-10}$  to have  
44 higher lipid uptake and foam cell formation activities, while inflammatory  $M^{IFN\gamma+LPS}$  and  $M^{oxPAPC}$  have  
45 lower foam cell activity. Functionally, there are key differences between the  $M^{IFN\gamma+LPS}$  and  $M^{oxPAPC}$   
46 inflammatory macrophage phenotypes that account for their low foam cell formation:  $M^{IFN\gamma+LPS}$  exhibit  
47 low lipid uptake while a higher lipid uptake in  $M^{oxPAPC}$  is compensated by increased lipid efflux  
48 activity.  
49  
50  
51  
52

53 Lipid handling by macrophages is clearly critical in atherogenesis. Thus, we also considered using  
54 lipids and lipoprotein particles as stimulating agents alone or in combination with the polarising factors  
55 we used to treat MDMs. However, our own pilot data (unpublished) and previous work has shown that  
56 lipid exposure of MDMs does not lead to notable transcriptomic changes or modify the impact of the  
57 polarising stimuli used in this study [52]. We therefore considered this as unlikely to provide additional  
58 insight beyond the current analysis without complicating data interpretation.  
59  
60  
61  
62  
63  
64  
65

1  
2  
3  
4  
5  
6 While previous studies, and more frequently in murine models, have compared macrophage  
7 polarisation in response to specific stimuli, we undertook a systematic approach to directly compare  
8 the impact of IFN $\gamma$ +LPS, IL-4, IL-10, oxPAPC and CXCL4 in human macrophages at the level of  
9 transcriptomes, protein through to functional lipid processing analysis. The analysis using 8 individual  
10 donors showed a clear distinction in transcriptional programming due to polarisation. All phenotypes  
11 showed a unique expression profile compared to unpolarised controls with exception of CXCL4  
12 polarisation, similar to work by Gleissner *et al* [42]. We noted that only a subset of the differentiated  
13 macrophages expressed CXCR3, the receptor for CXCL4, in all donors ( $46.3 \pm 16.3$  %). This may  
14 well have contributed to the minimal transcriptomic difference in this phenotype compared to  
15 unpolarised macrophages. Consistent with this, *MMP7* and *S100A8*, which are considered markers for  
16 the CXCL4 phenotype [43], were not upregulated consistently in all donors, again suggesting  
17 incomplete polarisation.  
18  
19  
20

21 For the IFN $\gamma$ +LPS, IL-4, IL-10 and oxPAPC polarisation conditions, the largest divergence in DEGs  
22 was between M<sup>IFN $\gamma$ +LPS</sup> and M<sup>IL-4</sup> polarisation, in keeping with other findings [51]. DEG enrichment  
23 in atherosclerosis and lipid associated IPA canonical pathways suggests a logical rationale for studying  
24 differences in lipid handling between macrophage phenotypes.  
25  
26

27 The lipid handling capacities were similar for M<sup>IL-4</sup>, M<sup>IL-10</sup> and unpolarised macrophages where each  
28 displayed efficient foam cell formation and acLDL uptake abilities alongside increased expression of  
29 *MSRI*, *CD36*, *SOAT1*, *NCEH1*, *LIPA* and other key genes in these scavenger receptor and LDL  
30 clearance pathways. At earlier stages of atherogenesis, M<sup>IL-4</sup> and M<sup>IL-10</sup> may prevent atherosclerosis  
31 progression by clearing lipid from within the artery wall due to their effective lipid processing capacity  
32 alongside effective efflux [4]. Our oil-red-O measurements showed high foam cell formation in these  
33 macrophages which may reflect a role in promoting atherosclerosis at later stages of disease where  
34 high levels of LDL and other lipids may overwhelm their capacity to process extracellular lipid[20,53].  
35 The cholesterol transporter SCARB1 plays a role in both cholesterol efflux and influx[54]. At the  
36 protein level, SCARB1 was most highly expressed in M<sup>IL-4</sup> compared to other polarisation states while  
37 ABCA1 and ABCG1 were significantly increased in both M<sup>IL-4</sup> and M<sup>IL-10</sup>, but not to the same extent  
38 as SCARB1. It is likely that post-transcriptional regulation accounts for differences in all of these  
39 cholesterol transporters since protein changes were more pronounced and not always in the same  
40 direction to that of the mRNA levels. These findings suggest that SCARB1, in combination with  
41 MRC1, offers the potential as an additional marker for the M<sup>IL-4</sup> phenotype given its level of  
42 upregulation. Increased SCARB1 in M<sup>IL-4</sup> compared to M<sup>IFN $\gamma$ +LPS</sup> likely accounts for their higher  
43 cholesterol efflux capacity.  
44  
45  
46  
47  
48

49 A pro-inflammatory and oxidised atherosclerotic plaque environment is associated with later stage  
50 disease, plaque instability and vulnerability to rupture [31]. Infection is a risk factor for myocardial  
51 infarction[55]while LPS has been detected within human plaques[56]. M<sup>IFN $\gamma$ +LPS</sup> and M<sup>oxPAPC</sup>  
52 phenotypes can arise due to differences in sterile inflammatory stimuli where the effect of oxidised  
53 phospholipids on macrophage lipid metabolism is less well understood, particularly in human  
54 macrophages. Oxidised phospholipids, derived from oxidation of lipoproteins and apoptotic cell  
55 membranes, induce TLR2-mediated acute inflammatory responses in macrophages [57]. Some reports  
56 of M<sup>oxPAPC</sup> polarised mouse macrophages have shown that the phagocytic activity of these  
57 macrophages is impaired [57]. Interestingly, in this study we found that M<sup>oxPAPC</sup> showed effective lipid  
58  
59  
60  
61  
62  
63  
64  
65

1  
2  
3  
4 uptake and processing, similar to the levels observed in M<sup>IL-4</sup> and M<sup>IL-10</sup> macrophages. At the same  
5 time, M<sup>oxPAPC</sup> showed low foam cell formation, which is likely accounted for by their high capacity to  
6 efflux cholesterol. M<sup>oxPAPC</sup> showed lower expression of *ABCG1* and *SCARB1* compared to M<sup>IL-4</sup> and  
7 M<sup>IL-10</sup> suggesting that efflux may be coupled to other transporters or they can process lipids more  
8 efficiently due to other regulatory factors. In contrast, M<sup>IFN $\gamma$ +LPS</sup> showed lower acLDL uptake  
9 compared to other phenotypes, accompanied by low foam cell formation.  
10  
11

12 Atherosclerosis associated macrophage polarisation dramatically affects the cell's capacity to handle  
13 lipid. Whole transcriptome sequencing of differentially polarised macrophages revealed distinct  
14 phenotypes where differences in key lipid handling gene and protein levels have a lasting effect on  
15 downstream lipid handling, as observed by differences in LDL uptake, cellular cholesterol levels and  
16 the capacity to efflux excess cellular cholesterol. Functional differences account for low foam cell  
17 formation in differentially polarised inflammatory macrophages: M<sup>IFN $\gamma$ +LPS</sup> exhibit low lipid uptake  
18 while increased lipid uptake in M<sup>oxPAPC</sup> is matched by increased lipid efflux activity. All of these  
19 processes influence the formation of lipid-laden macrophage foam cells, underlying the progression  
20 of atherosclerosis and vulnerability to cardiovascular disease.  
21  
22  
23  
24

## 25 **Funding**

26 This work was supported by the Biomedical Research Council (BMRC), Agency for Science,  
27 Technology and Research (A\*STAR) Research Attachment Programme to HLW, EKT and SCW to  
28 support EH and KB. BL and JL are part of the SIgN Immunomonitoring platform (supported by a  
29 BMRC IAF 311006 grant and BMRC transition funds #H16/99/b0/011).  
30  
31  
32

## 33 **Acknowledgements**

34 We thank Sarah Lai for data analysis support. We thank Jon Kilby for technical support in monocyte  
35 isolations.  
36  
37

## 38 **Author contributions:**

39 Conception and design: HLW, SCW, EKT. Performed experiments: KB, EH, JL, FS. Experimental  
40 analysis: KB, EH, BL, IS. Interpretation: KB, EH, HLW, EKT, SCW. Wrote manuscript: HLW, KB.  
41 Edited manuscript: EH, BL, JL, EKT, SCW.  
42  
43  
44

## 45 **Conflict of Interest.**

46 No conflicts of interest.  
47  
48

## 49 **References**

50  
51  
52  
53  
54  
55  
56  
57  
58  
59  
60  
61  
62  
63  
64  
65

- 1  
2  
3  
4  
5  
6  
7 [1] Tabas, I, Bornfeldt, KE, Macrophage Phenotype and Function in Different Stages  
8 of Atherosclerosis. *Circ Res* 2016;118(4):653–67.  
9 [2] Nascimento, BR, Brant, LC, Moraes, DN et al., Global health and cardiovascular  
10 disease. *Heart* 2014;100(22):1743–9.  
11 [3] Kavurma, MM, Rayner, KJ, Karunakaran, D, The walking dead: macrophage  
12 inflammation and death in atherosclerosis. *Curr Opin Lipidol* 2017;28(2):91–8.  
13 [4] Moore, KJ, Sheedy, FJ, Fisher, EA, Macrophages in atherosclerosis: a dynamic  
14 balance. *Nat Rev Immunol* 2013;13(10):709–21.  
15 [5] de Gaetano, M, Crean, D, Barry, M et al., M1- and M2-Type Macrophage  
16 Responses Are Predictive of Adverse Outcomes in Human Atherosclerosis. *Front*  
17 *Immunol* 2016;7:275.  
18 [6] Jinnouchi, H, Guo, L, Sakamoto, A et al., Diversity of macrophage phenotypes and  
19 responses in atherosclerosis. *Cell Mol Life Sci* 2019  
20 [7] Bories, GFP, Leitinger, N, Macrophage metabolism in atherosclerosis. *FEBS Lett*  
21 2017;591(19):3042–60.  
22 [8] Johnston, JM, Angyal, A, Bauer, RC et al., Myeloid Tribbles 1 induces early  
23 atherosclerosis via enhanced foam cell expansion. *Sci Adv* 2019;5(10):eaax9183.  
24 [9] Chistiakov, DA, Melnichenko, AA, Myasoedova, VA et al., Mechanisms of foam cell  
25 formation in atherosclerosis. *J Mol Med (Berl)* 2017;95(11):1153–65.  
26 [10] Huang, SC, Everts, B, Ivanova, Y et al., Cell-intrinsic lysosomal lipolysis is  
27 essential for alternative activation of macrophages. *Nat Immunol* 2014;15(9):846–  
28 55.  
29 [11] Sheriff, S, Du, H, Grabowski, GA, Characterization of lysosomal acid lipase by site-  
30 directed mutagenesis and heterologous expression. *J Biol Chem*  
31 1995;270(46):27766–72.  
32 [12] Vargas-Alarcón, G, Posadas-Romero, C, Villarreal-Molina, T et al., Single  
33 nucleotide polymorphisms within LIPA (Lysosomal Acid Lipase A) gene are  
34 associated with susceptibility to premature coronary artery disease. a replication in  
35 the genetic of atherosclerotic disease (GEA) Mexican study. *PLoS One*  
36 2013;8(9):e74703.  
37 [13] Igarashi, M, Osuga, J, Uozaki, H et al., The critical role of neutral cholesterol ester  
38 hydrolase 1 in cholesterol removal from human macrophages. *Circ Res*  
39 2010;107(11):1387–95.  
40 [14] Zhao, B, Song, J, Chow, WN et al., Macrophage-specific transgenic expression of  
41 cholesteryl ester hydrolase significantly reduces atherosclerosis and lesion  
42 necrosis in Ldlr mice. *J Clin Invest* 2007;117(10):2983–92.  
43 [15] Zhao, B, Song, J, St Clair, RW et al., Stable overexpression of human macrophage  
44 cholesteryl ester hydrolase results in enhanced free cholesterol efflux from human  
45 THP1 macrophages. *Am J Physiol Cell Physiol* 2007;292(1):C405–12.  
46 [16] Brown, MS, Ho, YK, Goldstein, JL, The cholesteryl ester cycle in macrophage  
47 foam cells. Continual hydrolysis and re-esterification of cytoplasmic cholesteryl  
48 esters. *J Biol Chem* 1980;255(19):9344–52.  
49  
50  
51  
52  
53  
54  
55  
56  
57  
58  
59  
60  
61  
62  
63  
64  
65

- 1  
2  
3  
4 [17] Ghosh, S, Macrophage cholesterol homeostasis and metabolic diseases: critical  
5 role of cholesteryl ester mobilization. *Expert Rev Cardiovasc Ther* 2011;9(3):329–  
6 40.  
7  
8 [18] Yang, L, Yang, JB, Chen, J et al., Enhancement of human ACAT1 gene  
9 expression to promote the macrophage-derived foam cell formation by  
10 dexamethasone. *Cell Res* 2004;14(4):315–23.  
11  
12 [19] Remmerie, A, Scott, CL, Macrophages and lipid metabolism. *Cell Immunol*  
13 2018;330:27–42.  
14 [20] Chawla, A, Boisvert, WA, Lee, CH et al., A PPAR gamma-LXR-ABCA1 pathway in  
15 macrophages is involved in cholesterol efflux and atherogenesis. *Mol Cell*  
16 2001;7(1):161–71.  
17  
18 [21] Ghosh, J, Guha, R, Das, S et al., Liposomal cholesterol delivery activates the  
19 macrophage innate immune arm to facilitate intracellular *Leishmania donovani*  
20 killing. *Infect Immun* 2014;82(2):607–17.  
21  
22 [22] Tabas, I, Consequences of cellular cholesterol accumulation: basic concepts and  
23 physiological implications. *J Clin Invest* 2002;110(7):905–11.  
24 [23] Warner, GJ, Stoudt, G, Bamberger, M et al., Cell toxicity induced by inhibition of  
25 acyl coenzyme A:cholesterol acyltransferase and accumulation of unesterified  
26 cholesterol. *J Biol Chem* 1995;270(11):5772–8.  
27  
28 [24] Sica, A, Erreni, M, Allavena, P et al., Macrophage polarization in pathology. *Cell*  
29 *Mol Life Sci* 2015;72(21):4111–26.  
30 [25] Chistiakov, DA, Bobryshev, YV, Nikiforov, NG et al., Macrophage phenotypic  
31 plasticity in atherosclerosis: The associated features and the peculiarities of the  
32 expression of inflammatory genes. *Int J Cardiol* 2015;184:436–45.  
33  
34 [26] Gordon, S, Martinez, FO, Alternative activation of macrophages: mechanism and  
35 functions. *Immunity* 2010;32(5):593–604.  
36 [27] Stöger, JL, Gijbels, MJ, van der Velden, S et al., Distribution of macrophage  
37 polarization markers in human atherosclerosis. *Atherosclerosis* 2012;225(2):461–  
38 8.  
39  
40 [28] Que, X, Hung, MY, Yeang, C et al., Oxidized phospholipids are proinflammatory  
41 and proatherogenic in hypercholesterolaemic mice. *Nature* 2018;558(7709):301–6.  
42 [29] Gleissner, CA, Macrophage Phenotype Modulation by CXCL4 in Atherosclerosis.  
43 *Front Physiol* 2012;3:1.  
44 [30] Boyle, JJ, Johns, M, Kampfer, T et al., Activating transcription factor 1 directs  
45 Mhem atheroprotective macrophages through coordinated iron handling and foam  
46 cell protection. *Circ Res* 2012;110(1):20–33.  
47  
48 [31] Cochain, C, Zerneck, A, Macrophages in vascular inflammation and  
49 atherosclerosis. *Pflugers Arch* 2017;469(3-4):485–99.  
50 [32] Canton, J, Neculai, D, Grinstein, S, Scavenger receptors in homeostasis and  
51 immunity. *Nat Rev Immunol* 2013;13(9):621–34.  
52  
53 [33] Hashizume, M, Mihara, M, Atherogenic effects of TNF- $\alpha$  and IL-6 via up-regulation  
54 of scavenger receptors. *Cytokine* 2012;58(3):424–30.  
55  
56 [34] Panousis, CG, Zuckerman, SH, Interferon-gamma induces downregulation of  
57 Tangier disease gene (ATP-binding-cassette transporter 1) in macrophage-derived  
58 foam cells. *Arterioscler Thromb Vasc Biol* 2000;20(6):1565–71.  
59  
60  
61  
62  
63  
64  
65

- 1  
2  
3  
4 [35] van Tits, LJ, Stienstra, R, van Lent, PL et al., Oxidized LDL enhances pro-  
5 inflammatory responses of alternatively activated M2 macrophages: a crucial role  
6 for Krüppel-like factor 2. *Atherosclerosis* 2011;214(2):345–9.  
7  
8 [36] Johnston, JM, Francis, SE, Kiss-Toth, E, Experimental models of murine  
9 atherosclerosis: does perception match reality. *Cardiovasc Res*  
10 2018;114(14):1845–7.  
11  
12 [37] Zhang, X, Li, J, Luo, S et al., IgE Contributes to Atherosclerosis and Obesity by  
13 Affecting Macrophage Polarization, Macrophage Protein Network, and Foam Cell  
14 Formation. *Arterioscler Thromb Vasc Biol* 2020;40(3):597–610.  
15  
16 [38] Murray, HW, Teitelbaum, RF, L-arginine-dependent reactive nitrogen intermediates  
17 and the antimicrobial effect of activated human mononuclear phagocytes. *J Infect*  
18 *Dis* 1992;165(3):513–7.  
19  
20 [39] Schneemann, M, Schoedon, G, Species differences in macrophage NO production  
21 are important. *Nat Immunol* 2002;3(2):102.  
22  
23 [40] Young, R, Bush, SJ, Lefevre, L et al., Species-Specific Transcriptional Regulation  
24 of Genes Involved in Nitric Oxide Production and Arginine Metabolism in  
25 Macrophages. *Immunohorizons* 2018;2(1):27–37.  
26  
27 [41] Thornton, S, Tan, R, Sproles, A et al., A Multiparameter Flow Cytometry Analysis  
28 Panel to Assess CD163 mRNA and Protein in Monocyte and Macrophage  
29 Populations in Hyperinflammatory Diseases. *J Immunol* 2019;202(5):1635–43.  
30  
31 [42] Gleissner, CA, Shaked, I, Little, KM et al., CXC chemokine ligand 4 induces a  
32 unique transcriptome in monocyte-derived macrophages. *J Immunol*  
33 2010;184(9):4810–8.  
34  
35 [43] Erbel, C, Tyka, M, Helmes, CM et al., CXCL4-induced plaque macrophages can be  
36 specifically identified by co-expression of MMP7+S100A8+ in vitro and in vivo.  
37 *Innate Immun* 2015;21(3):255–65.  
38  
39 [44] Chistiakov, DA, Bobryshev, YV, Orekhov, AN, Macrophage-mediated cholesterol  
40 handling in atherosclerosis. *J Cell Mol Med* 2016;20(1):17–28.  
41  
42 [45] Sorci-Thomas, MG, Thomas, MJ, Microdomains, Inflammation, and  
43 Atherosclerosis. *Circ Res* 2016;118(4):679–91.  
44  
45 [46] Kunjathoor, VV, Febbraio, M, Podrez, EA et al., Scavenger receptors class A-I/II  
46 and CD36 are the principal receptors responsible for the uptake of modified low  
47 density lipoprotein leading to lipid loading in macrophages. *J Biol Chem*  
48 2002;277(51):49982–8.  
49  
50 [47] Nozaki, S, Kashiwagi, H, Yamashita, S et al., Reduced uptake of oxidized low  
51 density lipoproteins in monocyte-derived macrophages from CD36-deficient  
52 subjects. *J Clin Invest* 1995;96(4):1859–65.  
53  
54 [48] Panousis, CG, Zuckerman, SH, Regulation of cholesterol distribution in  
55 macrophage-derived foam cells by interferon-gamma. *J Lipid Res* 2000;41(1):75–  
56 83.  
57  
58 [49] Brewer, HB, High-density lipoproteins: a new potential therapeutic target for the  
59 prevention of cardiovascular disease. *Arterioscler Thromb Vasc Biol*  
60 2004;24(3):387–91.  
61  
62 [50] Han, X, Kitamoto, S, Lian, Q et al., Interleukin-10 facilitates both cholesterol uptake  
63 and efflux in macrophages. *J Biol Chem* 2009;284(47):32950–8.  
64  
65

1  
2  
3  
4  
5  
6  
7  
8  
9  
10  
11  
12  
13  
14  
15  
16  
17  
18  
19  
20  
21  
22  
23  
24  
25  
26  
27  
28  
29  
30  
31  
32  
33  
34  
35  
36  
37  
38  
39  
40  
41  
42  
43  
44  
45  
46  
47  
48  
49  
50  
51  
52  
53  
54  
55  
56  
57  
58  
59  
60  
61  
62  
63  
64  
65

[51] Martinez, FO, Gordon, S, Locati, M et al., Transcriptional profiling of the human monocyte-to-macrophage differentiation and polarization: new molecules and patterns of gene expression. *J Immunol* 2006;177(10):7303–11.

[52] Xue, J, Schmidt, SV, Sander, J et al., Transcriptome-based network analysis reveals a spectrum model of human macrophage activation. *Immunity* 2014;40(2):274–88.

[53] Nomura, M, Liu, J, Yu, ZX et al., Macrophage fatty acid oxidation inhibits atherosclerosis progression. *J Mol Cell Cardiol* 2019;127:270–6.

[54] Ji, A, Meyer, JM, Cai, L et al., Scavenger receptor SR-BI in macrophage lipid metabolism. *Atherosclerosis* 2011;217(1):106–12.

[55] Kwong, JC, Schwartz, KL, Campitelli, MA et al., Acute Myocardial Infarction after Laboratory-Confirmed Influenza Infection. *N Engl J Med* 2018;378(4):345–53.

[56] Carnevale, R, Nocella, C, Petrozza, V et al., Localization of lipopolysaccharide from *Escherichia Coli* into human atherosclerotic plaque. *Sci Rep* 2018;8(1):3598.

[57] Kadl, A, Sharma, PR, Chen, W et al., Oxidized phospholipid-induced inflammation is mediated by Toll-like receptor 2. *Free Radic Biol Med* 2011;51(10):1903–9.

## Figure Legends

### Figure 1: Global analyses of human macrophage phenotype transcriptomes.

Human monocyte-derived macrophages from 8 donors were polarised with IFN $\gamma$ +LPS, IL-4, IL-10, oxPAPC or CXCL4 and examined by RNA-seq for global and specific pathway changes in their transcriptomes. (A) Principal component analysis (PCA) and (B) numbers of differentially expressed genes ( $|\log_2FC| > \log_2(1.5)$  and FDR < 0.05 (Benjamini and Hochberg method)) among all conditions. (C) Principal component analysis (PCA) and (D) numbers of differentially expressed genes excluding M<sup>CXCL4</sup>. PC – principal component, DEG – differentially expressed gene.

### Figure 2: Foam cell formation capacity by macrophage phenotypes.

(A) Representative Oil-Red-O staining of control and acLDL (25 $\mu$ g/ml for 24 h) loaded human monocyte-derived macrophages displaying presence of foam cells. Red arrow indicates positive Oil-Red-O staining where % control – % acLDL-loaded Area<sub>ORO</sub> > Area<sub>haematoxylin</sub>, scale bars = 100  $\mu$ m. (B) Quantification of foam cell formation capacity of human monocyte-derived macrophages, unpolarised (M<sup>un</sup>), or polarised with IFN $\gamma$ +LPS, IL-4, IL-10 or oxPAPC, determined using Image J polygonal selection and area measurements, where foam cells were considered positive for oil-red-O staining greater than the area of the nucleus.  $\Delta$ % foam cells = control % foam cells – acLDL % foam cells; mean  $\pm$  SEM, n = 5 separate donors, matched/repeated measures one-way ANOVA with Dunnett's post-hoc test, \*\*  $p \leq 0.01$  compared to M<sup>un</sup>.

### Figure 3: LDL uptake by macrophage phenotypes.

(A) Flow cytometry quantification of AlexaFluor-488-acLDL internalisation by human monocyte-derived macrophages, (M<sup>un</sup>), or polarised with IFN $\gamma$ +LPS, IL-4, IL-10 or oxPAPC, n = 8. (B) Differentially expressed mRNAs in the 'Binding and uptake of ligands by scavenger receptors' pathway using reactome.org analysis (annotations retrieved from reactome.org on 16 October 2018) in M<sup>x</sup> compared to unpolarised (M<sup>un</sup>) measured using RNA-seq; n = 8, thresholds for differential gene expression were  $|\log_2FC| > \log_2(1.5)$  and FDR < 0.05 (Benjamini and Hochberg method). RNA-seq. (C) MSR1 and CD36 mRNA expression among MDM phenotypes relative to unpolarised (M<sup>un</sup>); n = 8 donors, dotted lines =  $|\log_2(1.5)|$ , \*\*\* FDR  $\leq 0.001$ . (D) Flow cytometry quantification of MSR1 and CD36 cell surface protein levels by MDM phenotypes, n = 5. (A and D) Mean  $\pm$  SEM, matched/repeated measures one-way ANOVA with Dunnett's post-hoc test, \*  $p < 0.05$ , \*\*\*  $p \leq 0.001$ , compared to M<sup>un</sup>. MFI – geometric mean fluorescence intensity.

### Figure 4: Internal lipid content and lipoprotein processing in macrophage phenotypes.

Colorimetric quantification of change in (A) total cholesterol, (B) cholesterol ester and (C) free cholesterol; mean  $\pm$  SEM, n = 4 donors, matched/repeated measures one-way ANOVA with Dunnett's post-hoc test, by human monocyte-derived macrophages polarised with IFN $\gamma$ +LPS, IL-4, IL-10 or oxPAPC compared to unpolarised (M<sup>un</sup>). (D) Differentially expressed mRNAs in the 'LDL clearance' pathway (annotations retrieved from reactome.org on 16 October 2018) of M<sup>x</sup> compared to M<sup>un</sup> measured using RNA-seq; n = 8, thresholds for differential gene expression were  $|\log_2FC| > \log_2(1.5)$  and FDR < 0.05 (Benjamini and Hochberg method). (E) RNA-seq quantification of SOAT1, NCEH1, LIPA mRNA expression among MDM phenotypes compared to M<sup>un</sup>, n = 8, dotted lines =  $|\log_2(1.5)|$ , \* FDR < 0.05, \*\* FDR  $\leq 0.01$ , \*\*\* FDR  $\leq 0.001$ .

### Figure 5: Cholesterol efflux by MDM phenotypes.

1  
2  
3  
4 Fluorescence quantification of MDM cholesterol efflux for total cholesterol (A) via both lipid  
5 acceptors, HDL (B) and Apo-AI (C) separately; mean  $\pm$  SEM, n = 4 donors, matched/repeated  
6 measures one-way ANOVA with Dunnett's post-hoc test, \*\*  $p \leq 0.01$ , \*\*\*  $p \leq 0.001$  by human  
7 monocyte-derived macrophages polarised with IFN $\gamma$ +LPS, IL-4, IL-10 or oxPAPC compared to  
8 unpolarised (M<sup>un</sup>). (D) Differentially expressed genes in the 'HDL assembly' and 'HDL remodelling'  
9 pathways (annotations retrieved from reactome.org on 16 October 2018) in M<sup>x</sup> compared to M<sup>un</sup>  
10 measured using RNA-seq; n = 8 donors, thresholds for differential gene expression were  $|\log_2FC| >$   
11  $\log_2(1.5)$  and FDR  $< 0.05$  (Benjamini and Hochberg method). (E) RNA-seq quantification of *ABCA1*,  
12 *ABCG1*, *SCARB1* mRNA expression among MDM phenotypes compared to M<sup>un</sup>, n = 8 donors, dotted  
13 lines =  $|\log_2(1.5)|$ , \*\* FDR  $\leq 0.01$ , \*\*\* FDR  $\leq 0.001$ . (F) Flow cytometry quantification of MDM  
14 phenotype for ABCA1 (n = 5), ABCG1 (n = 6) and SCARB1 (n = 4 donors) cell surface protein levels;  
15 mean  $\pm$  SEM, matched/repeated measures one-way ANOVA with Dunnett's post-hoc test, \*  $p < 0.05$ ,  
16 \*\*\*  $p \leq 0.001$ , compared to M<sup>un</sup>.  
17  
18  
19  
20  
21  
22  
23  
24  
25  
26  
27  
28  
29  
30  
31  
32  
33  
34  
35  
36  
37  
38  
39  
40  
41  
42  
43  
44  
45  
46  
47  
48  
49  
50  
51  
52  
53  
54  
55  
56  
57  
58  
59  
60  
61  
62  
63  
64  
65

Response to Reviews.  
Ref.: Ms. No. ATH-D-19-00697R1

## **Macrophage polarisation associated with atherosclerosis differentially affects their capacity to handle lipid**

### **Atherosclerosis**

**Please find responses to the reviewers' comments as outlined in red text below.**

“Dear Dr. Wilson,

Thank you for submitting your paper to Atherosclerosis. It has been reviewed and the referees' reports are appended below.

We are pleased to tell you that the manuscript has been found potentially acceptable for publication. However, there are some minor points, as detailed by the reviewers, that need to be addressed before we can proceed further, and we would ask you to revise your paper addressing each issue raised. **ALL CHANGES TO THE TEXT ARE TO BE SHOWN IN RED** (not as tracked changes).

When you resubmit, you should also include a point-by-point response to each critique; if you revise to a satisfactory standard, your paper will be accepted for publication.

### **Editors' comments:**

The manuscript has been evaluated by the Editors and the two original Reviewers. While the revised version has improved, there are still mostly textual changes that need to be addressed before the paper can be accepted. “

### **Reviewers' comments:**

**Reviewer #1:** This manuscript provides a wealth of data using the state-of-art methodologies. Validation data provided, including good functional assays. Informative Graphical Abstract.

Introduction.

1. I am not sure I understand the statement Macrophages regulate lipoproteins within their own environment.

**We have also noted the change requested by reviewer 2, to the start of this second paragraph of the introduction. We have therefore altered the second sentence according to reviewer 2's request (see below), and kept the first sentence as it was, since reviewer 2 implied this first sentence should remain.**

Similarly: The accumulation of free and esterified cholesterol droplets.....

**We have changed the sentence “The cytosolic accumulation of free and esterified cholesterol droplets in macrophages results in the generation of foam cells, underlying atherosclerotic plaque formation [9].”**

**Now reads: “The cytosolic accumulation of esterified cholesterol and acylglyceride droplets in macrophages results in the generation of foam cells, driving atherosclerotic plaque formation”**

2. Reference missing to original work for the statement: In arterial atherosclerotic plaques, pro-inflammatory macrophages.....

We have now cited Stöger et al., 2012, after this sentence.

3. I would encourage the authors to cite original work more to back up their statements rather than review articles.

We have now cited additional original articles in our manuscript, including Murray and Teitelbaum, 1992; Stöger et al., 2012; Hashizume and Mihara, 2012 to support specific statements. Analysis of our reference list shows 70% of the articles we now cite are original, 30% are review articles. We have chosen to cite review articles where they support the statements most clearly and provide a comprehensive assimilation of the literature.

4. Page 4, macrophage phenotypes occur change to develop? No references supporting your next statement. This whole paragraph would benefit from better citation of the literature.

We have now cited Johnston et al., 2018; Zhang et al., 2020, as examples in the literature to support the statement “the majority of our current understanding of macrophage polarisation and its impact on atherosclerosis derives from murine models of atherosclerosis and analysis of mouse bone marrow derived macrophages” in this section on page 4.

Results. I have been able to read further through the results but found it really hard towards the end. I think it all comes back to needing a better Introduction so that the results can be extracted more quickly.

We reconfigured the introduction and results comprehensively in our last revision to support this reviewer’s recommendations. Since the recommendations for a better introduction are not specific we consider we are this reviewer may not wish us to make further changes without such specifications. We are open to editorial guidance on this specific point.

1). Please be careful with the use of the word expression-you are measuring CD163 RNA levels. Same for rest of sentence. Also later on you refer to protein expression rather than levels.

In the sentence on page 5 “M<sup>IL-10</sup> showed upregulation of *CD163*..” we have changed the wording expression to RNA. Throughout the manuscript we have italicised the gene names when referring to their RNA and kept the names in regular font when referring to protein, as per scientific convention.

We have changed any wording of “protein expression” to “protein levels” consistently in the manuscript, and have added mRNA where appropriate (to also comply with the suggestion in point 7 below).

2). Next, paragraph-the word transcription not correct here-you are looking at a transcriptome profile.

Page 5, we have changed “CXCL4 macrophages showed remarkably similar transcription to...” to “CXCL4 macrophages showed a remarkably similar transcriptome profile...”

3). Up-regulated at higher magnitudes than what? The beginning of the sentence not referenced.

Page 5, sentence “In addition, previously reported M<sup>CXCL4</sup> markers S100A8 (S100 calcium binding protein A8) and MMP7 (matrix metalloproteinase 7) showed expression changes in our study that were highly variable among donors and up-

regulated at higher magnitudes in most other phenotypes, especially M<sup>IFN $\gamma$ +LPS</sup> (Supplementary Tables 2 and 3)."

Is now changed to:

"S100A8 (S100 calcium binding protein A8) and MMP7 (matrix metalloproteinase 7) have previously been reported as M<sup>CXCL4</sup> markers [Erbel et al., 2015]; our RNA-seq data showed their expression in M<sup>CXCL4</sup> was highly variable among donors and was up-regulated in most other phenotypes, especially M<sup>IFN $\gamma$ +LPS</sup> (Supplementary Tables 2 and 3)."

4). P5. Our transcriptome analysis of the differently polarised-otherwise making an assumption that is not proven? Also differences in RNA levels of .....

We have changed (page 5/6):

"Our transcriptome analyses of macrophage phenotypes revealed key differences in atherosclerosis and lipid handling genes (Supplementary Table 5)."

To

"Our transcriptome analyses of macrophage phenotypes revealed differences in lipid handling and other associated pathway enrichment for differentially expressed genes (Supplementary Table 5)."

5). Data in Fig 2A and B good-but the sentence in the text confusing to read. Fig legend A, I think I would say that red arrow indicate first-think sentence is round the wrong way.

Legend to Fig 2A is changed as suggested.

In B not clear what n=5 means.

"n = 5 separate donors" is now written in the legend to Figure 2.

I think the text-describing Figure 2A and B and Fig 3A would be better under one Section and in one Figure.

Thank you for this suggestion: we suggest that Figures 2 and 3A and associated text (main text and figure legends) should probably remain as they are to maintain the narrative as per our previous response to reviewer 1. In our last revision we altered the introduction, and ordered the results with the following narrative structure: foam cell formation which is then broken down mechanistically to determine lipid accumulation, processing and efflux. Since this was a response to reviewer 1, and since reviewer 2 accepted our revision on this basis, we suggest we do keep the figures as currently presented.

I think you have too much Introduction in the Results-I think after your first sentence in paragraph 2 of the Introduction, you could introduce how acLDL is internalised by saying For Example.... I think most of the two paragraphs coming after the Subheading Cellular free cholesterol content in polarised macrophages on acLDL loading should be in the Introduction.

We have moved the following text from the results to the second paragraph of the introduction as advised:

"In the case of lipoprotein, cellular lipases such as LIPA break down the lipoprotein particles that have been taken up... for subsequent storage in lipid droplets."

Please be careful, the uptake of LDL and modified LDL are quite different animals. We agree that LDL and modified LDL behave differently. We have checked the manuscript and ensured we only refer to acLDL where this is what we have measured experimentally, or “LDL” when we are making more generalised and discussion-related statements.

6). If you removed the Introduction in the Results to the Introduction,

In our last revision we altered the start of the results section considerably in response to both reviewers’ recommendations. The start of the results section now comprises a brief paragraph that serves to introduce the rationale. This rationale is included in the final section of the introduction. We consider that the narrative in the results section will be less clear if we remove the introduction to the first section of the results.

you could say more in the Subheading Cellular free-cholesterol content.....just not very informative.

We have re-worded the “cellular free-cholesterol content...” results subheading to improve informativity.

7). Fig 3C etc are you looking at mRNA or Total RNA?

We are looking at mRNA. We have corrected figure legends to make this clear in the descriptions. We have adjusted some wording in the figure legends to make the information more accurate and informative as shown in red text.

Description of Figure 3B really muddled me at first-overall down-regulation of what in what.

We have re-worded this results section (page 6), along with the legend to Fig. 3B, to make this description clearer. This was a down-regulation of a pathway identified using Ingenuity Pathway Analysis, which we now describe.

A similar expression profile-I think here you are trying to say RNA levels translated into similar reduction in protein levels.

We have re-worded the last sentence in this same paragraph (page 6, Reduced LDL uptake section) to make the description clearer.

8). I would argue that it is agreement with rather consistent with. Very vague in lipoprotein particle breakdown.

We have re-worded the last sentence in this same paragraph (page 6, Reduced LDL uptake section) to state “In agreement with...”

9). The last section can be reduced-the first two sentences perhaps in the Introduction, and then start with the third.

We have made these changes as suggested.

## Reviewer 2:

The sentence "Macrophages regulate lipoproteins within their local environment [7]. Uptake of lipoproteins occurs via receptor-mediated endocytosis, pinocytosis, phagocytosis and scavenger receptor mediated mechanisms [4]" should read Macrophages regulate lipoproteins within their local environment [7]. Uptake of lipoproteins occurs via receptor-mediated endocytosis, such as scavenger receptor, pinocytosis and phagocytosis [4].

We have made these exact changes to the second paragraph of the introduction, as suggested here.

**Editorial Office comments:**

-Atherosclerosis applies formatting guidelines to all accepted papers, with the aim of improving their readability.

Manuscripts that do not conform to the format guidelines of the Atherosclerosis Journal will be returned to the authors for reformatting.

When revising your manuscript, please follow carefully the recommendations of our Atherosclerosis Style Guide to be downloaded from the following link ([http://cdn.elsevier.com/promis\\_misc/Atherosclerosis\\_style\\_guide\\_checklist.docx](http://cdn.elsevier.com/promis_misc/Atherosclerosis_style_guide_checklist.docx)).

- Make sure to apply the formatting requirements to all figures and tables where necessary (e.g. style of p values, gene and protein nomenclature).

- Make sure to use uniform lettering and sizing of your original artwork, including letters to indicate panels, throughout all figures.

- Make sure to submit high resolution versions of each figure. **We can improve these if considered necessary by the journal.**

- A graphical abstract is required at revision. **Supplied**

**Statement of Originality.**

The authors declare that the work described in our manuscript entitled "**Macrophage polarisation associated with atherosclerosis differentially affects their capacity to handle lipid**", for submission as a research article to *Atherosclerosis*, has not been published previously.

The article is not under consideration for publication elsewhere, publication of the article is approved by all authors and tacitly or explicitly by the responsible authorities where the work was carried out. If the article is accepted, it will not be published elsewhere by the authors, including electronically in the same form, in English or in any other language, without the written consent of the copyright-holder.

Figure 1

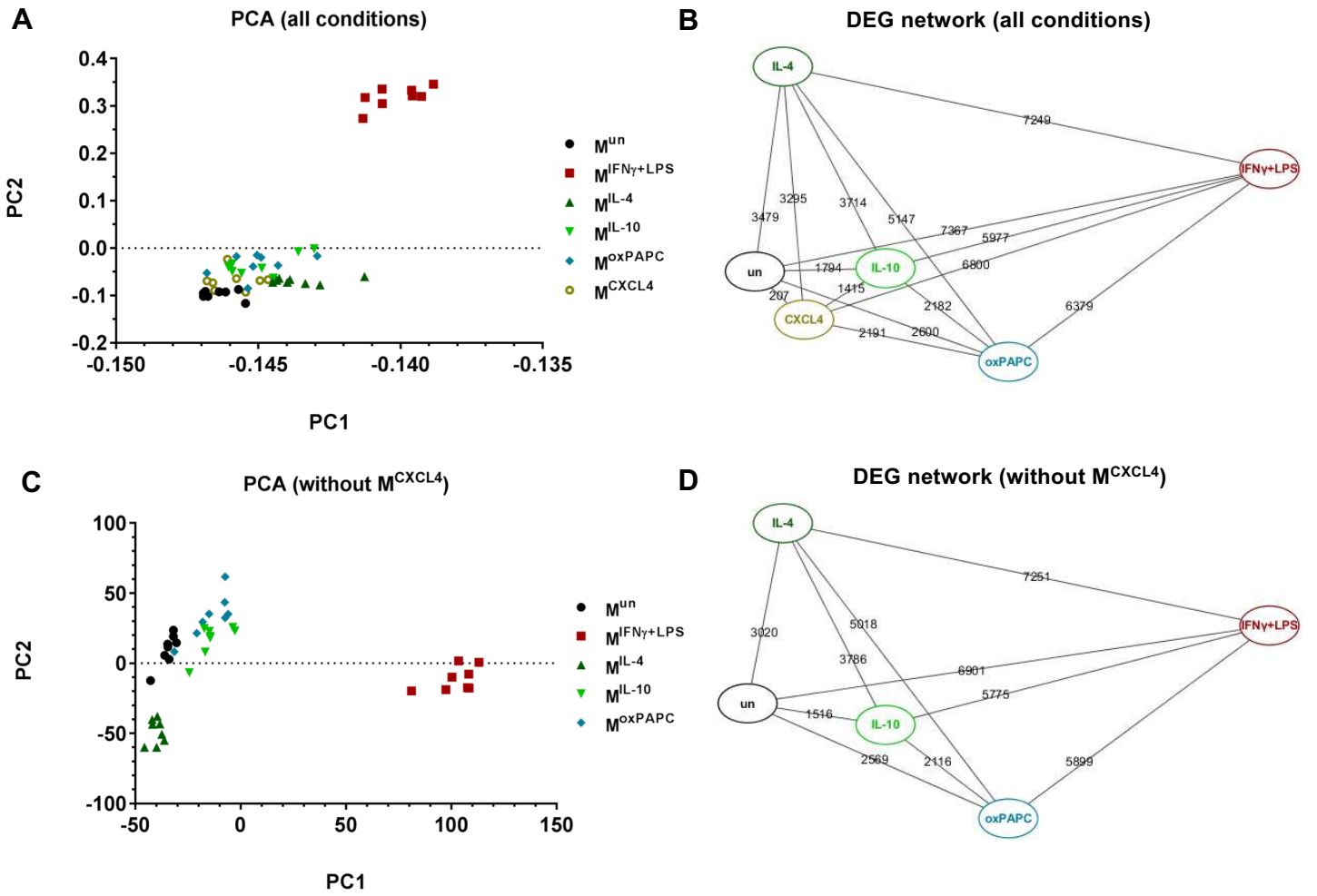
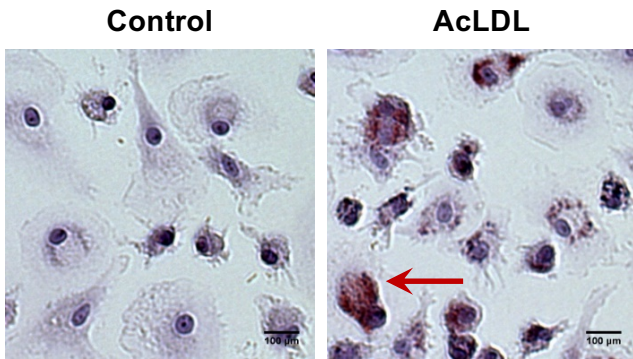
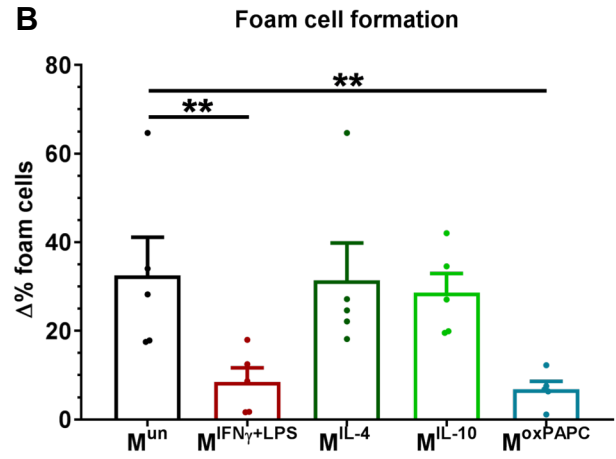


Figure 2

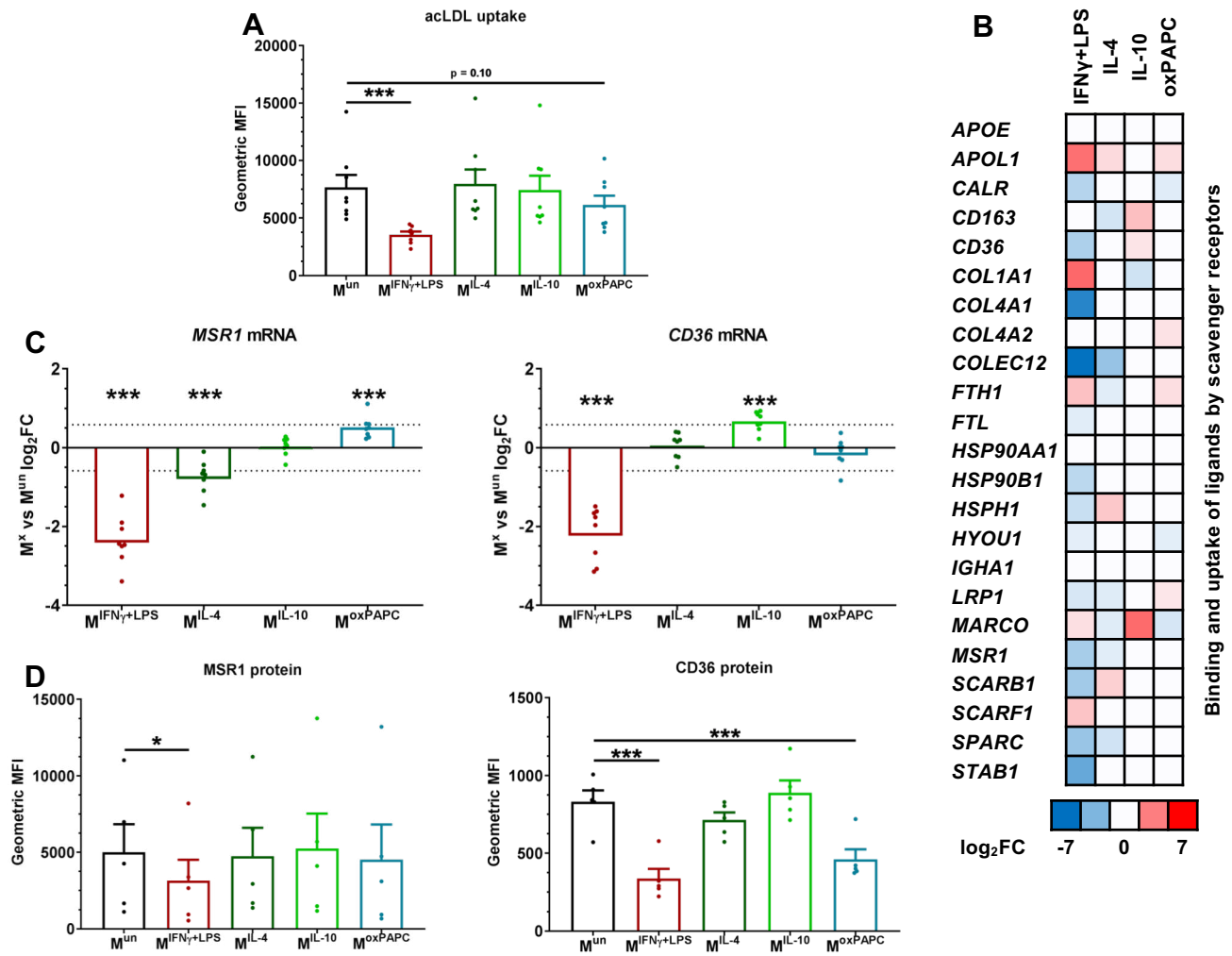
A



B



**Figure 3**



**Figure 4**

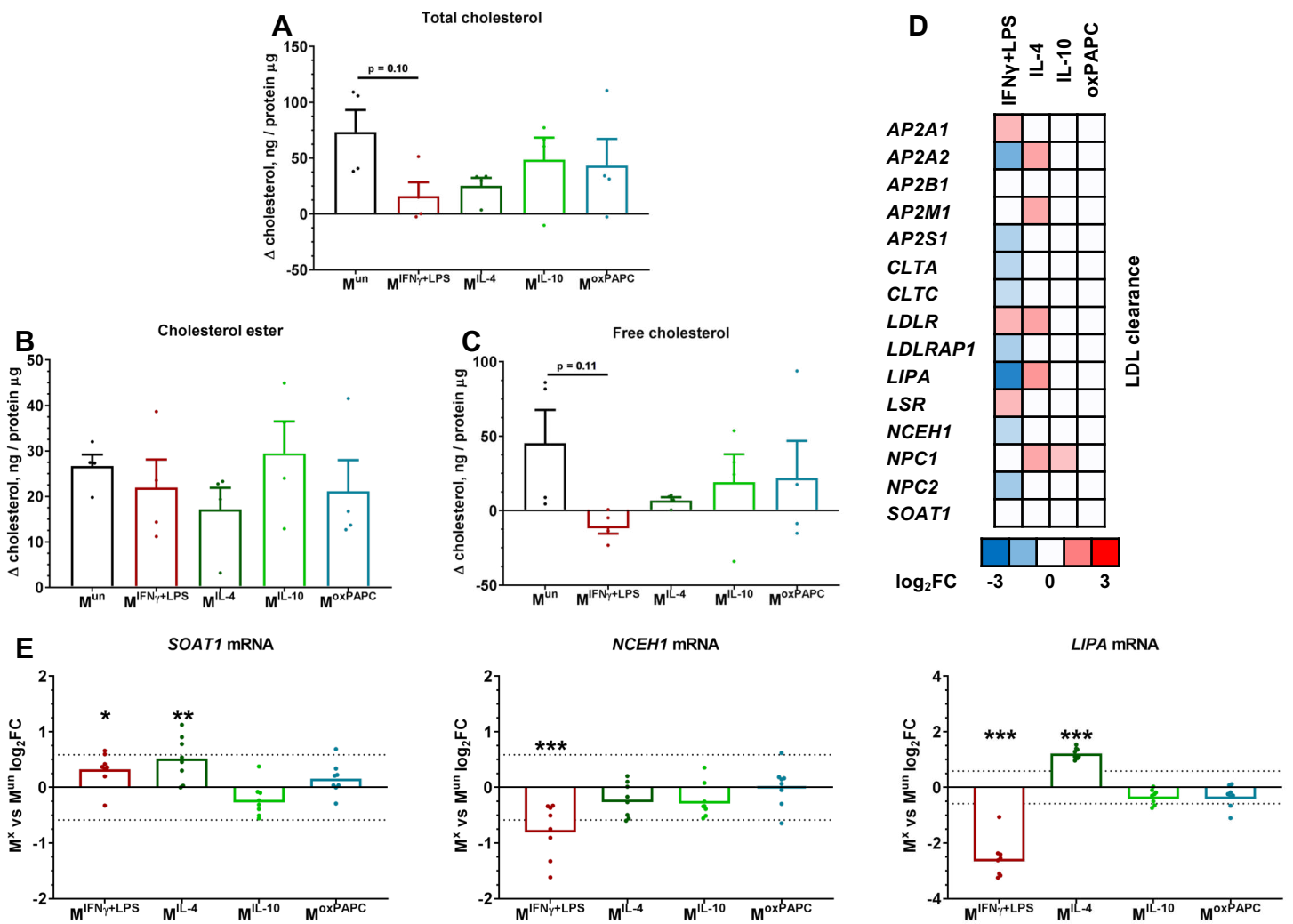
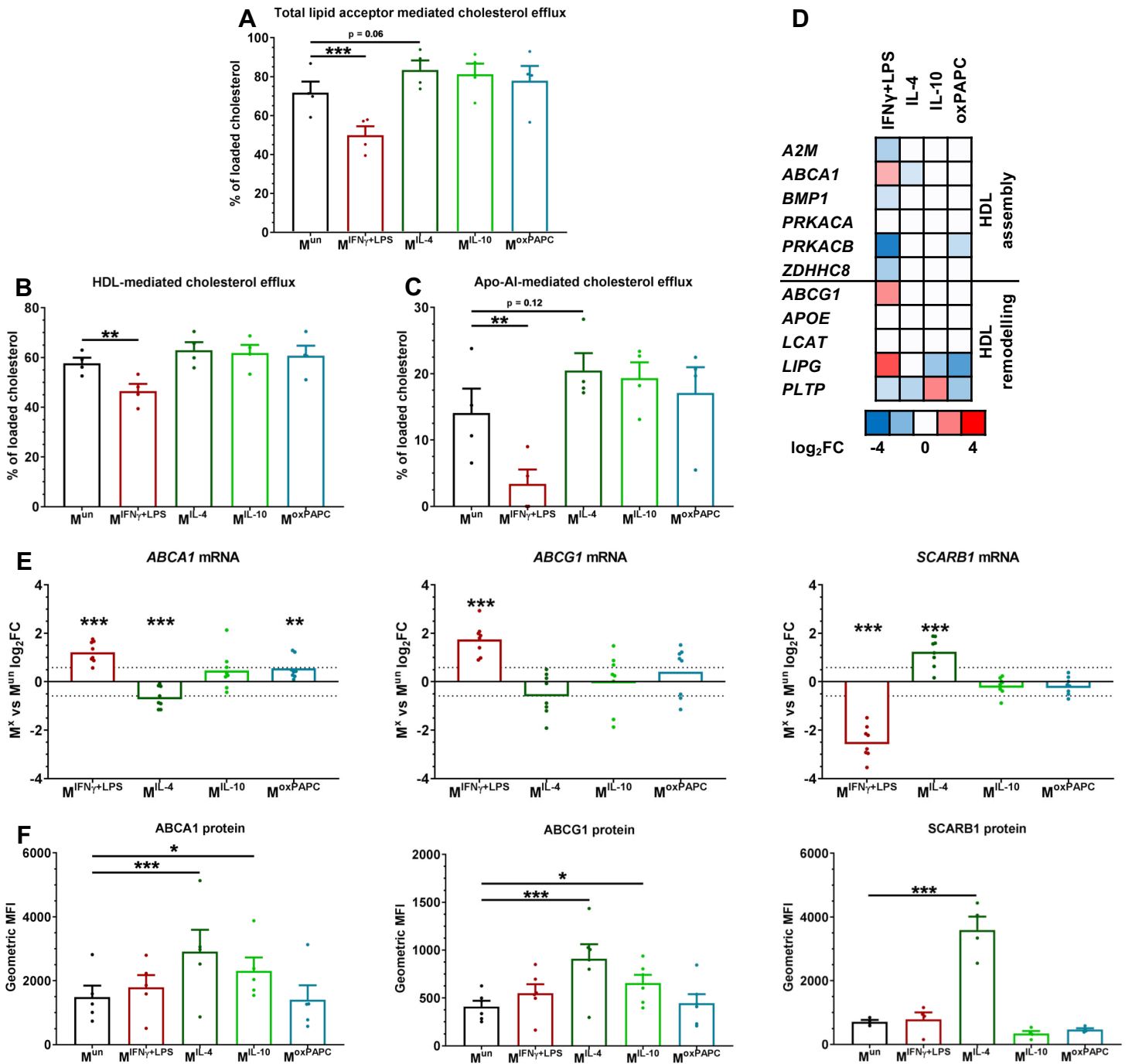


Figure 5



**Supplementary Material for online publication only**

**[Click here to download Supplementary Material for online publication only: Supp lipid handling Figs 05Feb2020pdf.pdf](#)**

**Supplementary Material for online publication only**

**[Click here to download Supplementary Material for online publication only: Supplementary tables Athero Rev 05Feb2020.pdf](#)**

**Supplementary Material for online publication only**

**[Click here to download Supplementary Material for online publication only: M&Methods Supplementary 05Feb2020.pdf](#)**

**Author contributions:**

**Kajus Baidžajevas:** Conceptualisation, Methodology, Investigation, Formal analysis, Interpretation, Writing of original draft, Writing – Review & Editing. **Éva Hadadi:** Conceptualisation, Methodology, Investigation, Formal analysis, Interpretation, Writing – Review & Editing. **Bernett Lee:** Formal analysis, Writing – Review & Editing. **Josephine Lum:** Methodology & Investigation. **Foo Shihui;** Methodology & Investigation. **Ian Sudbery:** Formal analysis. **Endre Kiss-Tóth:** Supervision, Project administration, Funding acquisition, Conceptualisation, Interpretation, Writing of original draft, Writing – Review & Editing. **Siew Cheng Wong:** Supervision, Project administration, Funding acquisition, Conceptualisation, Interpretation, Writing – Review & Editing. **Heather L Wilson:** Supervision, Project administration, Funding acquisition, Conceptualisation, Interpretation, Writing of original draft, Writing – Review & Editing.