



UNIVERSITY OF LEEDS

This is a repository copy of *Three-Year Follow up of the Phase 3 Pollux Study of Daratumumab Plus Lenalidomide and Dexamethasone (D-Rd) Versus Lenalidomide and Dexamethasone (Rd) Alone in Relapsed or Refractory Multiple Myeloma (RRMM)*.

White Rose Research Online URL for this paper:  
<http://eprints.whiterose.ac.uk/157106/>

Version: Accepted Version

---

**Proceedings Paper:**

Bahlis, N, Dimopoulos, MA, White, DJ et al. (14 more authors) (2018) Three-Year Follow up of the Phase 3 Pollux Study of Daratumumab Plus Lenalidomide and Dexamethasone (D-Rd) Versus Lenalidomide and Dexamethasone (Rd) Alone in Relapsed or Refractory Multiple Myeloma (RRMM). In: *Blood*. ASH 2018 – 60th American Society of Hematology Annual Meeting and Exposition, 01-04 Dec 2018, San Diego, CA. American Society of Hematology .

<https://doi.org/10.1182/blood-2018-99-112697>

---

© 2018 by The American Society of Hematology. This is an author produced version of a conference abstract published in *Blood*. Uploaded in accordance with the publisher's self-archiving policy.

**Reuse**

Items deposited in White Rose Research Online are protected by copyright, with all rights reserved unless indicated otherwise. They may be downloaded and/or printed for private study, or other acts as permitted by national copyright laws. The publisher or other rights holders may allow further reproduction and re-use of the full text version. This is indicated by the licence information on the White Rose Research Online record for the item.

**Takedown**

If you consider content in White Rose Research Online to be in breach of UK law, please notify us by emailing [eprints@whiterose.ac.uk](mailto:eprints@whiterose.ac.uk) including the URL of the record and the reason for the withdrawal request.



[eprints@whiterose.ac.uk](mailto:eprints@whiterose.ac.uk)  
<https://eprints.whiterose.ac.uk/>

Daratumumab plus lenalidomide and dexamethasone in relapsed/refractory multiple myeloma:  
extended follow-up of POLLUX

Authors: Nizar J. Bahlis,<sup>1</sup> Meletios A. Dimopoulos,<sup>2</sup> Darrell J. White,<sup>3</sup> Lotfi Benboubker,<sup>4</sup> Gordon Cook,<sup>5</sup> Merav Leiba,<sup>6</sup> P. Joy Ho,<sup>7</sup> Kihyun Kim,<sup>8</sup> Naoki Takezako,<sup>9</sup> Philippe Moreau,<sup>10</sup> Jonathan L Kaufman,<sup>11</sup> Maria Krevvata,<sup>12</sup> Christopher Chiu,<sup>12</sup> Xiang Qin,<sup>12</sup> Linda Okonkwo,<sup>13</sup> Sonali Trivedi,<sup>12</sup> Jon Ukropec,<sup>14</sup> Ming Qi,<sup>12</sup> and Jesus San-Miguel<sup>15</sup>

Author affiliations: <sup>1</sup>University of Calgary, Charbonneau Cancer Research Institute, Calgary, AB, Canada; <sup>2</sup>The National and Kapodistrian University of Athens, Athens, Greece; <sup>3</sup>QEII Health Sciences Center and Dalhousie University, Halifax, NS, Canada; <sup>4</sup>Service d'Hématologie et Thérapie Cellulaire, Hôpital Bretonneau, Centre Hospitalier Régional Universitaire (CHRU), Tours, France; <sup>5</sup>St James's Institute of Oncology, Leeds Teaching Hospitals National Health Service Trust and University of Leeds, Leeds, United Kingdom; <sup>6</sup>Assuta University Hospital, Faculty of Health Science, Ben-Gurion University of the Negev, Beersheba, Israel; <sup>7</sup>Institute of Haematology, Royal Prince Alfred Hospital, Camperdown, NSW, Australia; <sup>8</sup>Department of Medicine, Samsung Medical Center, Sungkyunkwan University School of Medicine, Seoul, South Korea; <sup>9</sup>Department of Hematology, National Hospital Organization Disaster Medical Center of Japan, Tachikawa, Japan; <sup>10</sup>Hematology, University Hospital Hôtel-Dieu, Nantes, France; <sup>11</sup>Winship Cancer Institute, Emory University, Atlanta, GA, United States of America; <sup>12</sup>Janssen Research & Development, LLC, Spring House, PA, United States of America; <sup>13</sup>Janssen Research & Development, LLC, Raritan, NJ, United States of America; <sup>14</sup>Janssen Global Medical Affairs, Horsham, PA, United States of America; and <sup>15</sup>Clínica Universidad de Navarra-Centro de Investigación Médica Aplicada, Instituto de Investigación Sanitaria de Navarra, Centro de Investigación Biomédica en Red de Cáncer, Pamplona, Spain

**Corresponding Author:** Nizar J. Bahlis, University of Calgary, Charbonneau Cancer Research Institute, Divisions of Hematology and Oncology, 1403 - 29th St NW Rm C210, Calgary, AB T2N 2T9. Telephone: 403-944-5246. E-mail: nbahlis@ucalgary.ca

**Conflict of Interest**

NJB consulted for and received honoraria and research funding from Janssen, Celgene, and Amgen. MAD consulted for and received honoraria from Janssen, Celgene, Takeda, Amgen, and Bristol-Myers Squibb. DJW received honoraria from and served on advisory committees for Amgen, Celgene, Janssen, and Takeda. GC received honoraria from Amgen, Bristol-Myers Squibb, GlycoMimetics, Celgene, Janssen, Takeda, and Sanofi; and received research funding

from Celgene, Janssen, and Takeda. PJH received honoraria from Janssen, Amgen, Novartis, and Takeda; and received travel support from Takeda and Celgene. PM received honoraria from and served on advisory committees for Amgen, Celgene, Janssen, Takeda, and AbbVie. JLK served in a consulting or advisory role for Janssen, Celgene, Takeda, Amgen, and Sanofi Genzyme; and received research funding from Janssen, Bluebird, Bristol-Myers Squibb, Celgene, and Sutro Biopharma. MK, CC, XQ, LO, ST, JU, and MQ are employees of Janssen. JS-M received honoraria from Janssen, Celgene, Amgen, Bristol-Myers Squibb, Novartis, Sanofi, and Roche. LB, ML, KK, and NT have no conflicts of interest to disclose.

**Running Title:** POLLUX: Extended Follow-up of Daratumumab Plus Lenalidomide and Dexamethasone

**Manuscript word count (max 4,000 words):** 2,792 words

**Number of figures/tables (max 8 figures/tables):** 4 figures and 2 tables

**Number of references (max 60 references):** 28 references

## Abstract

In POLLUX, daratumumab (D) plus lenalidomide and dexamethasone (Rd) reduced the risk of disease progression or death by 63% and increased the overall response rate (ORR) versus Rd in relapsed/refractory multiple myeloma (RRMM). Updated efficacy and safety after >3 years of follow-up are presented. Patients with  $\geq 1$  prior line received Rd (lenalidomide, 25 mg, on Days 1-21 of each 28-day cycle; dexamethasone, 40 mg, weekly)  $\pm$  daratumumab at the approved dosing schedule. Minimal residual disease (MRD) was assessed by next-generation sequencing. After 44.3 months median follow-up, D-Rd prolonged progression-free survival (PFS) in the intent-to-treat population (median 44.5 vs 17.5 months; HR, 0.44; 95% CI, 0.35-0.55;  $P < 0.0001$ ) and in patient subgroups. D-Rd demonstrated higher ORR (92.9% vs 76.4%;  $P < 0.0001$ ) and deeper responses including complete response or better (56.6% vs 23.2%;  $P < 0.0001$ ) and MRD negativity ( $10^{-5}$ ; 30.4% vs 5.3%;  $P < 0.0001$ ). Median time to next therapy was prolonged with D-Rd (50.6 vs 23.1 months; HR, 0.39; 95% CI, 0.31-0.50;  $P < 0.0001$ ). Median PFS on subsequent line of therapy (PFS2) was not reached with D-Rd versus 31.7 months with Rd (HR, 0.53; 95% CI, 0.42-0.68;  $P < 0.0001$ ). No new safety concerns were reported. These data support using D-Rd in patients with RRMM after first relapse.

## Introduction

The development of first- and second-generation novel agents over the past decade has led to the acceptance of immunomodulatory drug (IMiD)-based or proteasome inhibitor (PI)-based doublet or triplet therapy as standard of care for newly diagnosed and relapsed or refractory multiple myeloma (RRMM).<sup>1, 2</sup> However, multiple myeloma (MM) remains an incurable disease, underscoring the need for new treatment strategies. Optimal combination and sequencing of these next-generation agents remain to be defined, particularly among various patient subgroups.

Daratumumab is a human immunoglobulin G $\kappa$  (IgG $\kappa$ ) monoclonal antibody targeting CD38 with a direct on-tumor<sup>3-6</sup> and immunomodulatory mechanism of action.<sup>7-9</sup> Daratumumab-induced on-tumor activity occurs through several CD38 immune-mediated actions (complement-dependent cytotoxicity, antibody-dependent cellular cytotoxicity, antibody-dependent cellular phagocytosis), apoptosis, and modulation of CD38 enzymatic activity.<sup>3-6</sup> The immunomodulatory actions of daratumumab minimize the immune-suppressive functions of CD38<sup>+</sup> myeloid-derived tumor suppressor cells, regulatory T cells, and regulatory B cells and increase T-cell clonality.<sup>7-9</sup>

Daratumumab has demonstrated single-agent activity in heavily pretreated RRMM and in combination with standard-of-care regimens in RRMM after at least 1 prior therapy.<sup>10-13</sup>

Daratumumab safety and efficacy are also established in combination with bortezomib, melphalan, and prednisone, and with lenalidomide and dexamethasone in patients with newly diagnosed MM (NDMM) who are transplantation ineligible.<sup>14, 15</sup>

In the prespecified interim analysis of the phase 3 POLLUX study (median follow-up, 13.5 months), daratumumab in combination with lenalidomide and dexamethasone (D-Rd) reduced the risk of disease progression or death by 63% (median progression-free survival [PFS] not reached vs 18.4 months; hazard ratio [HR], 0.37; 95% confidence interval [CI], 0.27-0.52;  $P < 0.001$ ) and significantly increased the overall response rate (ORR) compared with lenalidomide and dexamethasone (Rd) alone (93% vs 76%;  $P < 0.001$ ) in patients with at least 1 prior therapy.<sup>12</sup> In an updated analysis after a longer follow-up of 25.4 months, the PFS benefit of D-Rd was maintained compared with Rd, with median PFS still not being reached for D-Rd versus 17.5 months for Rd. In addition, deep and durable responses were achieved with D-Rd, and the PFS benefit of D-Rd versus Rd was consistently maintained regardless of the number of prior lines of therapy received, prior IMiD exposure, bortezomib refractoriness, time since last therapy, or cytogenetic risk.<sup>16</sup>

We report the long-term efficacy and safety analyses of POLLUX after a median follow-up of more than 3.5 years.

## **Subjects and Methods**

### **Study design and patients**

POLLUX is an ongoing, randomized, open-label, multicenter, phase 3 study in patients with RRMM (ClinicalTrials.gov Identifier: NCT02076009). An independent ethics committee or institutional review board at each site approved the trial, and all patients provided written informed consent. The study protocol was conducted in accordance with the principles of the Declaration of Helsinki and the International Conference on Harmonisation Good Clinical

Practice guidelines. The study design, primary results, and post hoc secondary analyses have been previously reported.<sup>12,16</sup> Briefly, eligible patients had progressive disease (according to International Myeloma Working Group [IMWG] criteria)<sup>17, 18</sup> during or after their last regimen, received and responded to  $\geq 1$  prior line of therapy, and had a creatinine clearance  $\geq 30$  mL/min. Prior lenalidomide exposure was allowed, but patients with lenalidomide-refractory disease were excluded from participation. Patients were randomly assigned (1:1) to Rd (lenalidomide: 25 mg orally on Days 1 to 21 of each 28-day cycle; dexamethasone: 40 mg orally weekly) with or without daratumumab (16 mg/kg intravenous weekly for 8 weeks, every 2 weeks for 16 weeks, and every 4 weeks thereafter) until progression.

### **Endpoints and assessments**

The primary efficacy endpoint was PFS. Secondary efficacy endpoints included ORR, rates of very good partial response (VGPR) or better and complete response (CR) or better, minimal residual disease (MRD), time to response, duration of response, and overall survival (OS). PFS on subsequent line of therapy (PFS2) was an exploratory endpoint and was defined as the time from randomization to progression after the next line of subsequent therapy or death.

Exploratory post hoc secondary analyses evaluated patient subgroups according to prior lines of therapy (1 and 1-3), prior lenalidomide treatment, refractoriness to bortezomib, and achievement of CR or better. The number of prior lines of therapy was determined by investigators according to the IMWG consensus guidelines.<sup>18</sup> PFS, ORR, and MRD negativity were assessed for each subgroup.

MRD was assessed at the time of suspected CR and at 3 and 6 months after confirmed CR (and every 12 months thereafter if CR was maintained) using clonoSEQ® V2.0 (Adaptive Biotechnologies, Seattle, WA, USA). To allow for stringent, unbiased MRD evaluation, the entire intent-to-treat (ITT) population was evaluated, and patients were considered MRD positive if they had MRD-positive test results or no MRD assessment.

PFS was compared between treatment groups based on a stratified log-rank test. HRs and 95% CIs were estimated using a stratified Cox regression model with treatment as the sole explanatory variable, and the Kaplan-Meier method was used to estimate the distributions. Stratified Cochran-Mantel-Haenszel tests were used to test treatment differences in ORRs and rates of VGPR or better and CR or better. MRD-negative rates were compared between groups using Fisher's exact test and the likelihood-ratio test.

## **Results**

A total of 569 patients were randomly assigned in POLLUX; 286 patients were assigned to D-Rd and 283 patients were assigned to Rd. Baseline patient demographics, prior treatment history, and other clinical and cytogenetic characteristics have been previously published<sup>12, 16</sup> and are summarized in **Supplemental Table 1**. Approximately half of patients (52%) had received 1 prior line of therapy, 18% had received prior lenalidomide, 44% had received prior IMiD and PI, and 21% were refractory to bortezomib.

At the clinical cutoff on October 10, 2018, a total of 158 (55.8%) patients in the D-Rd group and 237 (84.3%) patients in the Rd group had discontinued treatment. The most common reasons for



discontinuation of treatment were progressive disease (D-Rd, 33.2%; Rd, 59.4%) and adverse events (AEs; D-Rd, 14.8%; Rd, 14.9%). The median (range) duration of study treatment was 34.3 (0-50.8) months in the D-Rd group and 16.0 (0.2-50.5) months in the Rd group.

## **Efficacy**

For the primary endpoint, at a median (range) follow-up of 44.3 (0-50.9) months, D-Rd significantly prolonged PFS compared with Rd in the ITT population (median 44.5 [95% CI, 34.1-not estimable] vs 17.5 [95% CI, 13.9-20.8] months; HR, 0.44; 95% CI, 0.35-0.55;  $P < 0.0001$ ; **Figure 1A**). In the subgroup of patients who received 1 prior line of therapy, D-Rd ( $n = 149$ ) significantly prolonged PFS versus Rd ( $n = 146$ ; median not reached vs 19.6 months; HR, 0.42; 95% CI, 0.30-0.58;  $P < 0.0001$ ; **Figure 1B**); 42-month PFS rates were 57.3% versus 27.8%, respectively. Among patients who received 1-3 prior lines of therapy, D-Rd ( $n = 272$ ) significantly prolonged PFS versus Rd ( $n = 264$ ; median 44.5 vs 17.5 months; HR, 0.43; 95% CI, 0.34-0.54;  $P < 0.0001$ ). In patients who achieved deep responses of CR or better, PFS was prolonged with D-Rd ( $n = 159$ ) versus Rd ( $n = 64$ ), with 42-month PFS rates of 73.6% versus 59.6%, respectively; **Figure 1C**. In patients with prior lenalidomide therapy, PFS was significantly prolonged with D-Rd ( $n = 50$ ) versus Rd ( $n = 50$ ; median 38.8 vs 18.6 months; HR, 0.38; 95% CI, 0.21-0.66;  $P = 0.0004$ ; **Figure 1D**). In the subset of patients with bortezomib-refractory disease, PFS was significantly prolonged with D-Rd ( $n = 59$ ) versus Rd ( $n = 58$ ; median 34.3 vs 11.3 months; HR, 0.40; 95% CI, 0.24-0.67;  $P = 0.0003$ ; **Figure 1E**). The PFS benefit of D-Rd versus Rd was also maintained in patients who received 2 or 3 lines of prior therapy, and in subgroups based on cytogenetic risk status, age, type of MM, International Staging System (ISS) disease stage, Eastern Cooperative Oncology Group performance status

score, baseline renal or hepatic function, prior treatment exposure, and refractory status (**Figure 2**).

In the response-evaluable population, ORR was significantly higher with D-Rd (n = 281) compared with Rd alone (n = 276; 92.9% vs 76.4%; P <0.0001; **Table 1**), including higher rates of VGPR or better (80.4% vs 49.3%; P <0.0001) and CR or better (56.6% vs 23.2%; P <0.0001). Stringent CRs were achieved in 29.2% of patients in the D-Rd group versus 10.5% of patients in the Rd group. Among patients who received prior lenalidomide, ORR was significantly higher with D-Rd (n = 50) compared with Rd alone (n = 47; 84.0% vs 64.0%; P = 0.0233; **Table 1**), including higher rates of VGPR or better (80.0% vs 36.0%; P <0.0001), CR or better (54.0% vs 12.0%; P <0.0001), and stringent CR (26.0% vs 2.0%). At a sensitivity threshold of  $10^{-5}$ , MRD negativity was achieved by 87 (30.4%) patients in the ITT population who received D-Rd versus 15 (5.3%) patients who received Rd (P <0.0001). Among patients who achieved MRD negativity ( $10^{-5}$ ), PFS was prolonged with D-Rd versus Rd (median not reached vs 42.0 months; HR, 0.46; 95% CI, 0.19-1.08; P = 0.0667; **Figure 3**), with 42-month PFS rates of 76.7% with D-Rd and 42.8% with Rd. Among patients with MRD-positive status, D-Rd significantly prolonged PFS compared with Rd (median 29.4 vs 16.0 months; HR, 0.60; 95% CI, 0.48-0.76; P <0.0001; **Figure 3**). Among patients who received prior lenalidomide, a similar improvement in the rate of MRD negativity ( $10^{-5}$ ) was observed with D-Rd (32.0%) versus Rd alone (6.0%; P = 0.0006).

Median duration of response was not reached (95% CI, could not be estimated) with D-Rd compared with 25.2 (95% CI, 19.3-29.7) months with Rd. Median time to next therapy was 50.6 months versus 23.1 months in the D-Rd and Rd arms, respectively (HR, 0.39; 95% CI, 0.31-0.50;

P <0.0001; **Figure 4A**). Median PFS2 was not reached in the D-Rd group versus 31.7 months in the Rd group (HR, 0.53; 95% CI, 0.42-0.68; P <0.0001; **Figure 4B**), with 42-month PFS2 rates of 59% and 38%, respectively. At the time of this analysis, fewer deaths occurred in patients receiving D-Rd (n = 104) compared with Rd (n = 121), and follow-up for OS is ongoing.

## **Safety**

No new safety concerns were reported in either treatment group with longer follow-up. The most common treatment-emergent AE (TEAE) was neutropenia, occurring in 63.3% of patients treated with D-Rd and 48.0% of patients who received Rd (**Table 2**). The most common ( $\geq 5\%$ ) grade 3/4 TEAEs observed with D-Rd and Rd included neutropenia, febrile neutropenia, anemia, thrombocytopenia, lymphopenia, pneumonia, diarrhea, fatigue, hypokalemia, and cataracts (**Table 2**). The percentage of patients with TEAEs leading to treatment discontinuation was similar between groups (D-Rd, 14.8%; Rd, 14.6%). The most common TEAEs ( $\geq 1\%$ ) leading to treatment discontinuation with D-Rd versus Rd were pneumonia (1.8% vs 1.1%), pulmonary embolism (0% vs 1.1%), septic shock (1.1% vs 0%), and general physical health deterioration (1.1% vs 0%), respectively. The incidence of second primary malignancies was similar between groups, occurring in 8.5% of patients who received D-Rd and 8.9% of patients who received Rd.

## **Discussion**

After >3.5 years of median follow-up, the addition of daratumumab to Rd continued to demonstrate significant clinical benefit over Rd alone in patients with RRMM. At a median follow-up of 44.3 months, D-Rd demonstrated an unprecedented median PFS of 44.5 months versus only 17.5 months for Rd, conferring a 56% reduction in the risk of disease progression or

death. At the time of the analysis, the upper bound of the 95% CI for median PFS in the D-Rd group was not estimable. Deep responses, including significantly higher (>5-fold) rates of MRD negativity ( $10^{-5}$ ) were achieved with D-Rd versus Rd alone (30.4% vs 5.3%, respectively), which deepened with longer follow-up.<sup>16</sup>

Patients with 1 prior line of therapy gained the greatest clinical benefit with D-Rd, resulting in a 58% reduction in the risk of disease progression or death compared with Rd. Consistent findings were observed in CASTOR, in which patients who received 1 prior line of therapy demonstrated the greatest clinical benefit with daratumumab plus bortezomib and dexamethasone (D-Vd) versus Vd (78% reduction in the risk of disease progression or death), regardless of prior treatment with either lenalidomide or bortezomib.<sup>19</sup>

In POLLUX, patients who were refractory to lenalidomide were excluded from the study. However, D-Rd demonstrated improved efficacy outcomes, including prolonged PFS and improved depth of response in patients who received prior lenalidomide but were not refractory to the drug. Furthermore, D-Rd prolonged PFS versus Rd in poor prognostic patient subgroups including those with ISS stage III disease, patients who were refractory to their last prior line of therapy, and patients with high cytogenetic risk abnormalities, although to a lesser extent in comparison with other patient subgroups evaluated.

Although cross-study comparisons must take into account differences in study population and design, the median PFS observed with D-Rd (44.5 months) is unprecedented in the RRMM treatment setting. In the phase 3 ASPIRE study of carfilzomib plus Rd (KRd) compared with Rd

alone in patients with relapsed MM and 1-3 prior treatments, median PFS was 26.1 versus 16.6 months with KRd and Rd, respectively (HR, 0.66; 95% CI, 0.55-0.78;  $P < 0.001$ ), at a median follow-up of 48.8 months for KRd and 48.0 months for Rd.<sup>20</sup> With longer follow-up (median 67.1 months), median OS was 48.3 months for KRd vs 40.4 months for Rd, resulting in 21% reduction in the risk of death (HR, 0.79; 95% CI, 0.67-0.95;  $P = 0.0045$ ).<sup>20</sup> In the phase 3 TOURMALINE-MM1 study in patients with RRMM and 1-3 prior therapies, median PFS was 20.6 months with ixazomib in combination with Rd (IRd) versus 14.7 months with Rd alone (HR, 0.74; 95% CI, 0.59-0.94;  $P = 0.01$ ), at a median follow-up of 14.8 versus 14.6 months in the IRd and Rd groups, respectively.<sup>21</sup> Median PFS in the phase 3 ELOQUENT-2 study in patients with RRMM and 1-3 prior therapies was 19.4 months with elotuzumab plus Rd compared with 14.9 months with Rd alone (HR, 0.73; 95% CI, 0.60-0.89;  $P = 0.0014$ ), with 3 years of extended follow-up.<sup>22</sup>

D-Rd induced deep and durable responses that continued to deepen over time with longer follow-up. At the most recent clinical cutoff, rates of VGPR or better (80.4% vs 49.3%) and CR or better (56.6% vs 23.2%) with D-Rd versus Rd were higher than those observed at primary analysis (VGPR or better: 75.8% vs 44.2%; CR or better: 43.1% vs 19.2%)<sup>12</sup> and at approximately 2 years of follow-up (VGPR or better: 78.6% vs 47.8%; CR or better: 51.2% vs 21.0%; **Supplemental Figure 1A**).<sup>16</sup> MRD-negative rates have also continued to deepen with D-Rd versus Rd over time (interim analysis: 22.4% vs 4.6%;<sup>12</sup> 2-year follow-up: 26.2% vs 6.4%;<sup>16</sup> current analysis: 30.4% vs 5.3%; **Supplemental Figure 1B**), while the rates of MRD negativity with Rd have remained relatively constant with longer follow-up. It is important to note that an updated next-generation sequencing assay with improved calibration rate was used to determine

MRD negativity in the current study. PFS was prolonged with D-Rd vs Rd in patients who achieved MRD negativity and significantly prolonged with D-Rd vs Rd in patients with MRD-positive status. The lack of a statistically significant difference in PFS among patients who achieved MRD negativity with D-Rd versus Rd ( $P = 0.0667$ ) may be the result of the low number of patients in the Rd arm ( $n = 15$ ).

PFS2 may serve as a surrogate endpoint for OS when survival data are not available.<sup>23</sup> The use of PFS2 has been suggested as a preferred endpoint, particularly for studies investigating long-term maintenance treatment.<sup>23-25</sup> The findings presented here demonstrate that D-Rd significantly prolongs the time to subsequent therapy and PFS2 versus Rd, conferring a 47% reduction in the risk of disease progression or death on the next line of therapy. These data indicate that treatment with D-Rd does not negatively impact on patient outcomes on subsequent therapy. At the time of this analysis, 17 more deaths occurred with Rd (121/283) compared with D-Rd (104/286). Follow-up for OS in POLLUX is ongoing, with the final analysis planned after 330 deaths.

With longer follow-up, the safety profile of D-Rd and Rd remains largely consistent with the known safety profiles of daratumumab<sup>26</sup> and of Rd.<sup>20,27,28</sup> Despite the higher rates of neutropenia and infections (upper respiratory tract infection and pneumonia), the rates of grade 3 or 4 infections were similar between treatment groups and were managed according to local institutional treatment standard-of-care protocols. Consistent tolerability was also observed with daratumumab in the phase 3 MAIA study of D-Rd versus Rd in patients with NDMM who are ineligible for transplantation (median follow-up, 28 months).<sup>15</sup>

Taken together, the results from >3.5 years of median follow-up demonstrate that D-Rd continues to provide significant PFS benefit and induces deeper and more durable responses, including a >5-fold increase in the rate of MRD negativity versus Rd alone in patients with RRMM. No new safety concerns were observed following a median of 34 months of D-Rd exposure. These updated findings continue to support the use of D-Rd in patients with RRMM after first relapse.

### **Acknowledgements**

This study was sponsored by Janssen Research & Development, LLC. The authors thank the patients who participated in this study and their families, as well as the study co-investigators, research nurses, and coordinators at each of the clinical sites. Medical writing and editorial support were provided by Kristin Runkle, PhD, of MedErgy and were funded by Janssen Global Services, LLC. The data sharing policy of Janssen Pharmaceutical Companies of Johnson & Johnson is available at <https://www.janssen.com/clinical-trials/transparency>. As noted on this site, requests for access to the study data can be submitted through Yale Open Data Access (YODA) Project site at <http://yoda.yale.edu>.

### **Authorship**

### **Contribution**

NJB, MAD, GC, ST, and JS-M conceived and designed the study, acquired data, and analyzed and interpreted results; DJW, LB, KK, NT, and LO acquired data; ML, PJH, JLK, and CC acquired data and analyzed and interpreted results; PM conceived and designed the study; MK and XQ analyzed and interpreted results; and JU and MQ conceived and designed the study and

analyzed and interpreted results. All authors drafted and reviewed the manuscript, approved the final version, agreed to publish this report, and vouch for accuracy and completeness of the data.

### **Conflict of Interest**

NJB consulted for and received honoraria and research funding from Janssen, Celgene, and Amgen. MAD consulted for and received honoraria from Janssen, Celgene, Takeda, Amgen, and Bristol-Myers Squibb. DJW received honoraria from and served on advisory committees for Amgen, Celgene, Janssen, and Takeda. GC received honoraria from Amgen, Bristol-Myers Squibb, GlycoMimetics, Celgene, Janssen, Takeda, and Sanofi; and received research funding from Celgene, Janssen, and Takeda. PJH received honoraria from Janssen, Amgen, Novartis, and Takeda; and received travel support from Takeda and Celgene. PM received honoraria from and served on advisory committees for Amgen, Celgene, Janssen, Takeda, and AbbVie. JLK served in a consulting or advisory role for Janssen, Celgene, Takeda, Amgen, and Sanofi Genzyme; and received research funding from Janssen, Bluebird, Bristol-Myers Squibb, Celgene, and Sutro Biopharma. MK, CC, XQ, LO, ST, JU, and MQ are employees of Janssen. JS-M received honoraria from Janssen, Celgene, Amgen, Bristol-Myers Squibb, Novartis, Sanofi, and Roche. LB, ML, KK, and NT have no conflicts of interest to disclose.



## References

1. National Comprehensive Cancer Network. NCCN Clinical Practice Guidelines in Oncology™. Multiple Myeloma. version 1.2019. 2018. [Accessed: October 19, 2018]; Available from: [https://www.nccn.org/professionals/physician\\_gls/pdf/myeloma.pdf](https://www.nccn.org/professionals/physician_gls/pdf/myeloma.pdf)
2. Moreau P, San Miguel J, Sonneveld P, Mateos MV, Zamagni E, Avet-Loiseau H, et al. Multiple myeloma: ESMO Clinical Practice Guidelines for diagnosis, treatment and follow-up. *Ann Oncol* 2017; **28**(suppl\_4): iv52-iv61.
3. de Weers M, Tai YT, van der Veer MS, Bakker JM, Vink T, Jacobs DC, et al. Daratumumab, a novel therapeutic human CD38 monoclonal antibody, induces killing of multiple myeloma and other hematological tumors. *J Immunol* 2011; **186**(3): 1840–1848.
4. Lammerts van Bueren J, Jakobs D, Kaldenhoven N, Roza M, Hiddingh S, Meesters J, et al. Direct in vitro comparison of daratumumab with surrogate analogs of CD38 antibodies MOR03087, SAR650984 and Ab79. *Blood* 2014; **124**(21): 3474.
5. Overdijk MB, Verploegen S, Bogels M, van Egmond M, Lammerts van Bueren JJ, Mutis T, et al. Antibody-mediated phagocytosis contributes to the anti-tumor activity of the therapeutic antibody daratumumab in lymphoma and multiple myeloma. *MAbs* 2015; **7**(2): 311–321.
6. Overdijk MB, Jansen JH, Nederend M, Lammerts van Bueren JJ, Groen RW, Parren PW, et al. The therapeutic CD38 monoclonal antibody daratumumab induces programmed cell death via Fcγ receptor-mediated cross-linking. *J Immunol* 2016; **197**(3): 807–813.
7. Krejcik J, Casneuf T, Nijhof IS, Verbist B, Bald J, Plesner T, et al. Daratumumab depletes CD38<sup>+</sup> immune-regulatory cells, promotes T-cell expansion, and skews T-cell repertoire in multiple myeloma. *Blood* 2016; **128**(3): 384–394.
8. Chiu C, Casneuf T, Axel A, Lysaght A, Bald J, Khokhar NZ, et al. Daratumumab in combination with lenalidomide plus dexamethasone induces clonality increase and T-cell expansion: results from a phase 3 randomized study (POLLUX). *Blood* 2016; **128**: 4531.
9. Adams HC, 3rd, Stevenaert F, Krejcik J, Van der Borgh K, Smets T, Bald J, et al. High-parameter mass cytometry evaluation of relapsed/refractory multiple myeloma patients treated with daratumumab demonstrates immune modulation as a novel mechanism of action. *Cytometry A* 2019; **95**(3): 279–289.
10. Usmani SZ, Weiss BM, Plesner T, Bahlis NJ, Belch A, Lonial S, et al. Clinical efficacy of daratumumab monotherapy in patients with heavily pretreated relapsed or refractory multiple myeloma. *Blood* 2016; **128**(1): 37–44.

11. Palumbo A, Chanan-Khan A, Weisel K, Nooka AK, Masszi T, Beksac M, et al. Daratumumab, bortezomib, and dexamethasone for multiple myeloma. *N Engl J Med* 2016; **375**(8): 754–766.
12. Dimopoulos MA, Oriol A, Nahi H, San-Miguel J, Bahlis N, Usmani S, et al. Daratumumab, lenalidomide, and dexamethasone for multiple myeloma. *N Engl J Med* 2016; **375**(14): 1319–1331.
13. Chari A, Suvannasankha A, Fay JW, Arnulf B, Kaufman JL, Ithikharuddin JJ, et al. Daratumumab plus pomalidomide and dexamethasone in relapsed and/or refractory multiple myeloma. *Blood* 2017; **130**(8): 974–981.
14. Mateos MV, Dimopoulos MA, Cavo M, Suzuki K, Jakubowiak A, Knop S, et al. Daratumumab plus bortezomib, melphalan, and prednisone for untreated myeloma. *N Engl J Med* 2018; **378**(6): 518–528.
15. Facon T, Kumar S, Plesner T, Orłowski RZ, Moreau P, Bahlis N, et al. Daratumumab plus lenalidomide and dexamethasone for untreated myeloma. *N Engl J Med* 2019; **380**(22): 2104–2115.
16. Dimopoulos M, San Miguel J, Belch A, White D, Benboubker L, Cook G, et al. Daratumumab plus lenalidomide and dexamethasone versus lenalidomide and dexamethasone in relapsed or refractory multiple myeloma: updated analysis of POLLUX. *Haematologica* 2018; **103**(12): 2088–2096.
17. Durie BGM, Harousseau JL, Miguel JS, Blade J, Barlogie B, Anderson K, et al. International uniform response criteria for multiple myeloma. *Leukemia* 2006; **20**(9): 1467–1473.
18. Rajkumar SV, Harousseau JL, Durie B, Anderson KC, Dimopoulos M, Kyle R, et al. Consensus recommendations for the uniform reporting of clinical trials: report of the International Myeloma Workshop Consensus Panel 1. *Blood* 2011; **117**(18): 4691–4695.
19. Mateos M-V, Sonneveld P, Hungria VTM, Nooka AK, Estell J, Barreto WG, et al. Efficacy and safety of daratumumab, bortezomib, and dexamethasone (D-Vd) versus bortezomib and dexamethasone (Vd) in first relapse patients: two-year update of Castor. Poster presented at: 60th Annual Meeting of the American Society of Hematology; December 1-4, 2018; San Diego, CA. Abstract 3270.
20. Siegel DS, Dimopoulos MA, Ludwig H, Facon T, Goldschmidt H, Jakubowiak A, et al. Improvement in overall survival with carfilzomib, lenalidomide, and dexamethasone in patients with relapsed or refractory multiple myeloma. *J Clin Oncol* 2018; **36**(8): 728–734.

21. Moreau P, Masszi T, Grzasko N, Bahlis NJ, Hansson M, Pour L, et al. Oral ixazomib, lenalidomide, and dexamethasone for multiple myeloma. *N Engl J Med* 2016; **374**(17): 1621–1634.
22. Dimopoulos MA, Lonial S, White D, Moreau P, Palumbo A, San-Miguel J, et al. Elotuzumab plus lenalidomide/dexamethasone for relapsed or refractory multiple myeloma: ELOQUENT-2 follow-up and post-hoc analyses on progression-free survival and tumour growth. *Br J Haematol* 2017; **178**(6): 896–905.
23. Oronsky B, Carter CA, Reid TR, Scicinski J, Oronsky A, Lybeck M, et al. Confirmatory trials in the evaluation of anticancer medicinal products in man--PFS2: a measure of therapeutic action-at-a-distance. *Neoplasia* 2015; **17**(9): 716–722.
24. Solaman A, Walker AJ, Davies FE. Title: progression-free survival 2 in hematological cancer treatment choices: challenges to routine use. *Blood* 2016; **128**(22): 5982–5982.
25. European Medicines Agency, Science Medicines Health. Guideline on the evaluation of anticancer medicinal products in man. 2012. Available from: [https://www.ema.europa.eu/en/documents/scientific-guideline/guideline-evaluation-anticancer-medicinal-products-man-revision-4\\_en.pdf](https://www.ema.europa.eu/en/documents/scientific-guideline/guideline-evaluation-anticancer-medicinal-products-man-revision-4_en.pdf)
26. Usmani S, Nahi H, Weiss BM, Bahlis N, Belch A, Lokhorst HM, et al. Safety and efficacy of daratumumab monotherapy in patients with heavily pretreated relapsed and refractory multiple myeloma: final results from GEN501 and SIRIUS. Poster presented at: 59th American Society of Hematology (ASH) Annual Meeting & Exposition; December 9-12, 2017; Atlanta, GA; 2017. Abstract 3107.
27. Dimopoulos MA, Swern AS, Li JS, Hussein M, Weiss L, Nagarwala Y, et al. Efficacy and safety of long-term treatment with lenalidomide and dexamethasone in patients with relapsed/refractory multiple myeloma. *Blood Cancer J* 2014; **4**: e257.
28. Dimopoulos MA, Lonial S, Betts KA, Chen C, Zichlin ML, Brun A, et al. Elotuzumab plus lenalidomide and dexamethasone in relapsed/refractory multiple myeloma: extended 4-year follow-up and analysis of relative progression-free survival from the randomized ELOQUENT-2 trial. *Cancer* 2018; **124**(20): 4032–4043.

## FIGURE LEGENDS

### **Figure 1. PFS in the ITT population and in patient subgroups based on prior treatment.**

PFS in (A) the ITT population<sup>a</sup> and in patients with (B) 1 prior line of therapy, (C) responses of CR or better, (D) prior lenalidomide exposure, or (E) refractoriness to bortezomib. Kaplan-Meier estimates of PFS.

PFS, progression-free survival; ITT, intent-to-treat; D-Rd, daratumumab/lenalidomide/dexamethasone; Rd, lenalidomide/dexamethasone; HR, hazard ratio; CI, confidence interval; NE, not estimable.

<sup>a</sup>The upper bound of the 95% CI is currently NE.

### **Figure 2. PFS in patient subgroups.**

PFS, progression-free survival; D-Rd, daratumumab/lenalidomide/dexamethasone; Rd, lenalidomide/dexamethasone; CI, confidence interval; NE, not estimable; ISS, International Staging System; MM, multiple myeloma; Ig, immunoglobulin; ECOG, Eastern Cooperative Oncology Group; CrCl, creatinine clearance; PI, proteasome inhibitor; FISH, fluorescence in situ hybridization.

<sup>a</sup>Cytogenetic risk was determined by FISH or karyotyping.

<sup>b</sup>Patients with high cytogenetic risk had t(4;14), t(14;16), or del17p abnormalities.

### **Figure 3. PFS based on MRD status ( $10^{-5}$ ).**

PFS, progression-free survival; MRD, minimal residual disease; D-Rd, daratumumab/lenalidomide/dexamethasone; Rd, lenalidomide/dexamethasone.

**Figure 4. Time to subsequent therapy and PFS2.**

Time to subsequent therapy (A) and PFS2 (B) in the ITT population.

PFS2, progression-free survival on subsequent line of therapy; HR, hazard ratio; CI, confidence interval; Rd, lenalidomide/dexamethasone; D-Rd, daratumumab/lenalidomide/dexamethasone; ITT, intent-to-treat.

**Table 1. Summary of Best Confirmed Response in the Response-evaluable Population**

<b>Response category</b>	<b>D-Rd (n = 281)</b>	<b>Rd (n = 276)</b>	<b>P<sup>a</sup></b>
Overall response			
No. with response	261	211	
Rate, % (95% CI)	92.9 (89.2-95.6)	76.4 (71.0-81.3)	<0.0001
Clinical benefit, n (%) <sup>b</sup>	266 (94.7)	237 (85.9)	
Best overall response, n (%)			
CR or better	159 (56.6)	64 (23.2)	<0.0001
Stringent CR <sup>c</sup>	82 (29.2)	29 (10.5)	
CR	77 (27.4)	35 (12.7)	
VGPR or better	226 (80.4)	136 (49.3)	<0.0001
VGPR	67 (23.8)	72 (26.1)	
Partial response	35 (12.5)	75 (27.2)	
Stable disease <sup>d</sup>	18 (6.4)	59 (21.4)	
Progressive disease	0 (0.0)	4 (1.4)	
Response could not be evaluated	2 (0.7)	2 (0.7)	

D-Rd, daratumumab/lenalidomide/dexamethasone; Rd, lenalidomide/dexamethasone; CI, confidence interval; CR, complete response; VGPR, very good partial response.

Response was assessed according to the Uniform Criteria Consensus recommendations of the International Myeloma Working Group.<sup>17, 18</sup> The analysis included patients who had a confirmed diagnosis of MM and measurable disease at baseline or screening. In addition, patients had received at least 1 administration of trial treatment and had at least 1 disease assessment after the baseline visit.

<sup>a</sup>P values were calculated using the Cochran-Mantel-Haenszel chi-square test.

<sup>b</sup>Clinical benefit includes all patients with minimal response, partial response, VGPR, CR, and stringent CR.

<sup>c</sup>Criteria for a stringent CR include the criteria for a CR plus a normal free light-chain ratio and the absence of clonal plasma cells as assessed by immunohistochemical or immunofluorescence analysis or by flow cytometry.

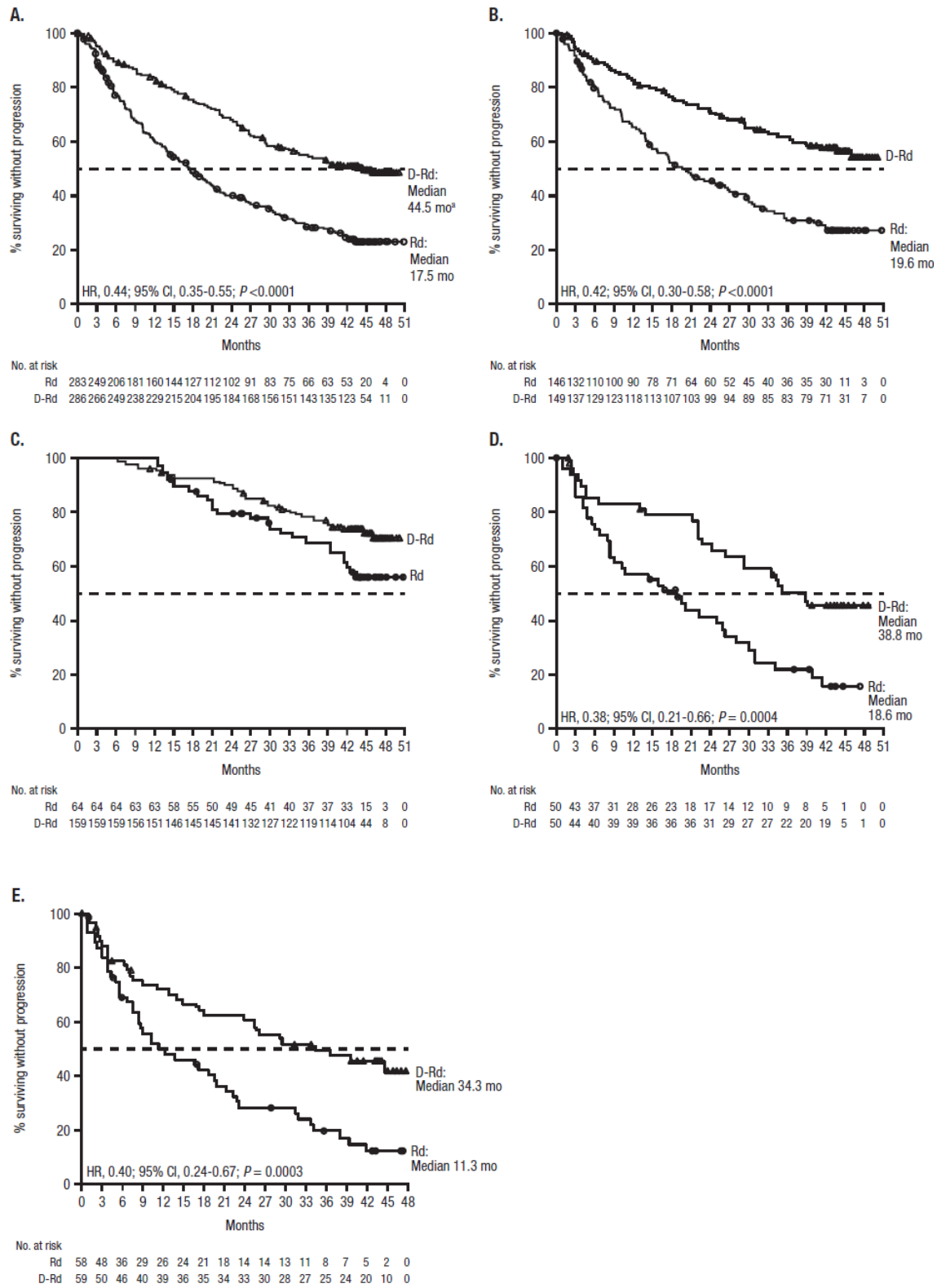
<sup>d</sup>Includes patients who achieved a minimal response.

**Table 2. Most Common All Grade ( $\geq 25\%$ ) and Grade 3/4 ( $\geq 5\%$ ) TEAEs in the Safety Population**

Event	D-Rd (n = 283)		Rd (n = 281)	
	All grade, n (%)	Grade 3/4, n (%)	All grade, n (%)	Grade 3/4, n (%)
Total	281 (99.3)	255 (90.1)	274 (97.5)	227 (80.8)
Hematologic				
Neutropenia	179 (63.3)	157 (55.5)	135 (48.0)	117 (41.6)
Febrile neutropenia	18 (6.4)	18 (6.4)	8 (2.8)	8 (2.8)
Anemia	111 (39.2)	50 (17.7)	114 (40.6)	60 (21.4)
Thrombocytopenia	87 (30.7)	42 (14.8)	88 (31.3)	44 (15.7)
Lymphopenia	19 (6.7)	16 (5.7)	17 (6.0)	12 (4.3)
Nonhematologic				
Diarrhea	165 (58.3)	28 (9.9)	105 (37.4)	11 (3.9)
Upper respiratory tract infection	121 (42.8)	5 (1.8)	78 (27.8)	5 (1.8)
Fatigue	110 (38.9)	19 (6.7)	87 (31.0)	12 (4.3)
Cough	99 (35.0)	1 (0.4)	42 (14.9)	0 (0.0)
Nasopharyngitis	96 (33.9)	0 (0.0)	59 (21.0)	0 (0.0)
Constipation	93 (32.9)	3 (1.1)	76 (27.0)	2 (0.7)
Muscle spasms	84 (29.7)	3 (1.1)	60 (21.4)	4 (1.4)
Nausea	82 (29.0)	6 (2.1)	51 (18.1)	2 (0.7)
Insomnia	76 (26.9)	6 (2.1)	63 (22.4)	4 (1.4)
Pyrexia	73 (25.8)	9 (3.2)	40 (14.2)	7 (2.5)
Back pain	71 (25.1)	8 (2.8)	57 (20.3)	5 (1.8)
Pneumonia	71 (25.1)	43 (15.2)	46 (16.4)	28 (10.0)
Edema peripheral	67 (23.7)	2 (0.7)	47 (16.7)	4 (1.4)
Vomiting	62 (21.9)	3 (1.1)	19 (6.8)	4 (1.4)
Dyspnea	61 (21.6)	12 (4.2)	37 (13.2)	2 (0.7)
Bronchitis	57 (20.1)	7 (2.5)	48 (17.1)	9 (3.2)
Asthenia	54 (19.1)	10 (3.5)	46 (16.4)	9 (3.2)
Cataract	54 (19.1)	17 (6.0)	33 (11.7)	12 (4.3)
Hypokalemia	51 (18.0)	17 (6.0)	31 (11.0)	9 (3.2)
Headache	49 (17.3)	0 (0.0)	24 (8.5)	0 (0.0)

TEAE, treatment-emergent adverse event; D-Rd, daratumumab/lenalidomide/dexamethasone; Rd, lenalidomide/dexamethasone.

**Figure 1. PFS in the ITT population and in patient subgroups based on prior treatment.**



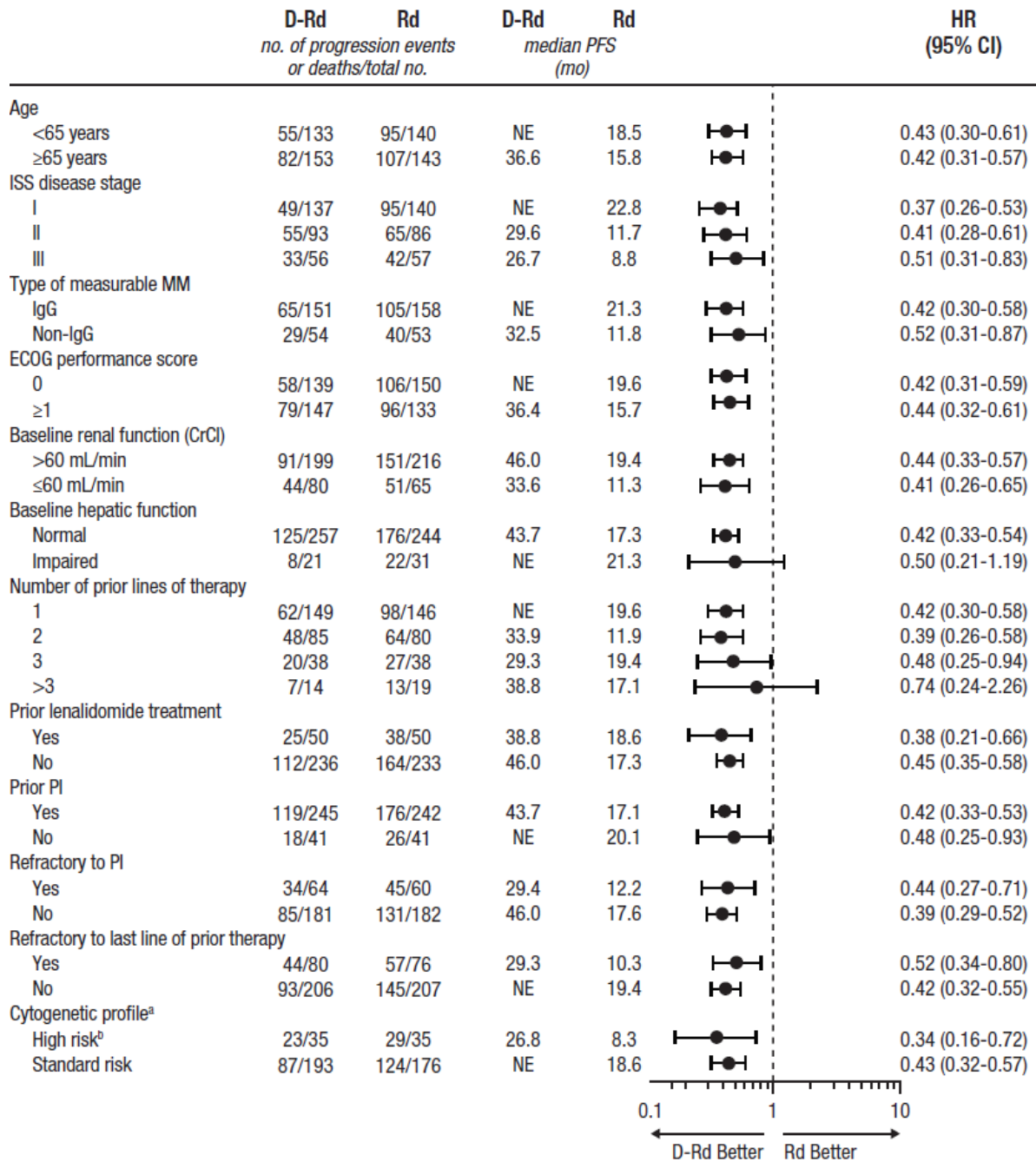


PFS in (A) the ITT population<sup>a</sup> and in patients with (B) 1 prior line of therapy, (C) responses of CR or better, (D) prior lenalidomide exposure, or (E) refractoriness to bortezomib. Kaplan-Meier estimates of PFS.

PFS, progression-free survival; ITT, intent-to-treat; D-Rd, daratumumab/lenalidomide/dexamethasone; Rd, lenalidomide/dexamethasone; HR, hazard ratio; CI, confidence interval; NE, not estimable.

<sup>a</sup>The upper bound of the 95% CI is currently NE.

**Figure 2. PFS in patient subgroups.**

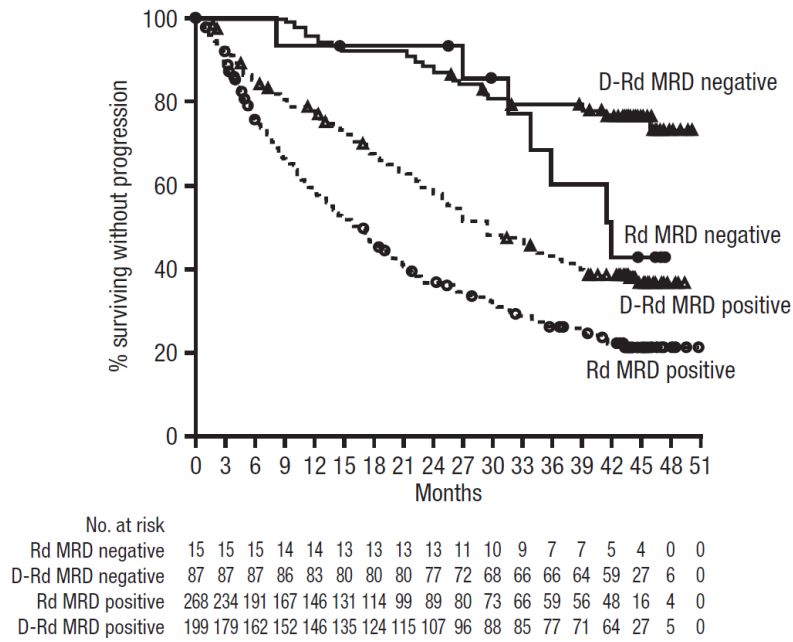


PFS, progression-free survival; D-Rd, daratumumab/lenalidomide/dexamethasone; Rd, lenalidomide/dexamethasone; CI, confidence interval; NE, not estimable; ISS, International Staging System; MM, multiple myeloma; Ig, immunoglobulin; ECOG, Eastern Cooperative Oncology Group; CrCl, creatinine clearance; PI, proteasome inhibitor; FISH, fluorescence in situ hybridization.

<sup>a</sup>Cytogenetic risk was determined by FISH or karyotyping.

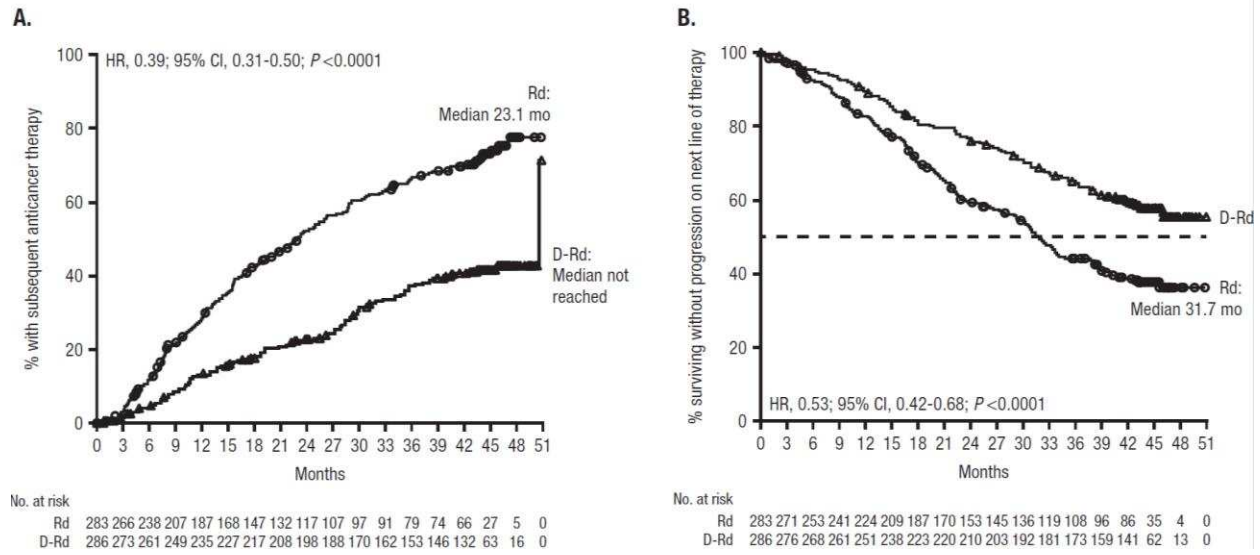
<sup>b</sup>Patients with high cytogenetic risk had t(4;14), t(14;16), or del17p abnormalities.

**Figure 3. PFS based on MRD status ( $10^{-5}$ ).**



PFS, progression-free survival; MRD, minimal residual disease; D-Rd, daratumumab/lenalidomide/dexamethasone; Rd, lenalidomide/dexamethasone.

**Figure 4. Time to subsequent therapy and PFS2.**



Time to subsequent therapy (A) and PFS2 (B) in the ITT population.

PFS2, progression-free survival on subsequent line of therapy; HR, hazard ratio; CI, confidence interval; Rd, lenalidomide/dexamethasone; D-Rd, daratumumab/lenalidomide/dexamethasone; ITT, intent-to-treat.