



This is a repository copy of *Compassion-focused self-help for psychological distress associated with skin conditions: a randomized feasibility trial.*

White Rose Research Online URL for this paper:
<https://eprints.whiterose.ac.uk/155369/>

Version: Supplemental Material

Article:

Hudson, M.P., Thompson, A.R. orcid.org/0000-0001-6788-7222 and Emerson, L.-M. (2019) Compassion-focused self-help for psychological distress associated with skin conditions: a randomized feasibility trial. *Psychology and Health*, 35 (9). pp. 1095-1114. ISSN 0887-0446

<https://doi.org/10.1080/08870446.2019.1707829>

This is an Accepted Manuscript of an article published by Taylor & Francis in *Psychology and Health* on 27 Dec 2019, available online:
<http://www.tandfonline.com/10.1080/08870446.2019.1707829>.

Reuse

Items deposited in White Rose Research Online are protected by copyright, with all rights reserved unless indicated otherwise. They may be downloaded and/or printed for private study, or other acts as permitted by national copyright laws. The publisher or other rights holders may allow further reproduction and re-use of the full text version. This is indicated by the licence information on the White Rose Research Online record for the item.

Takedown

If you consider content in White Rose Research Online to be in breach of UK law, please notify us by emailing eprints@whiterose.ac.uk including the URL of the record and the reason for the withdrawal request.



eprints@whiterose.ac.uk
<https://eprints.whiterose.ac.uk/>

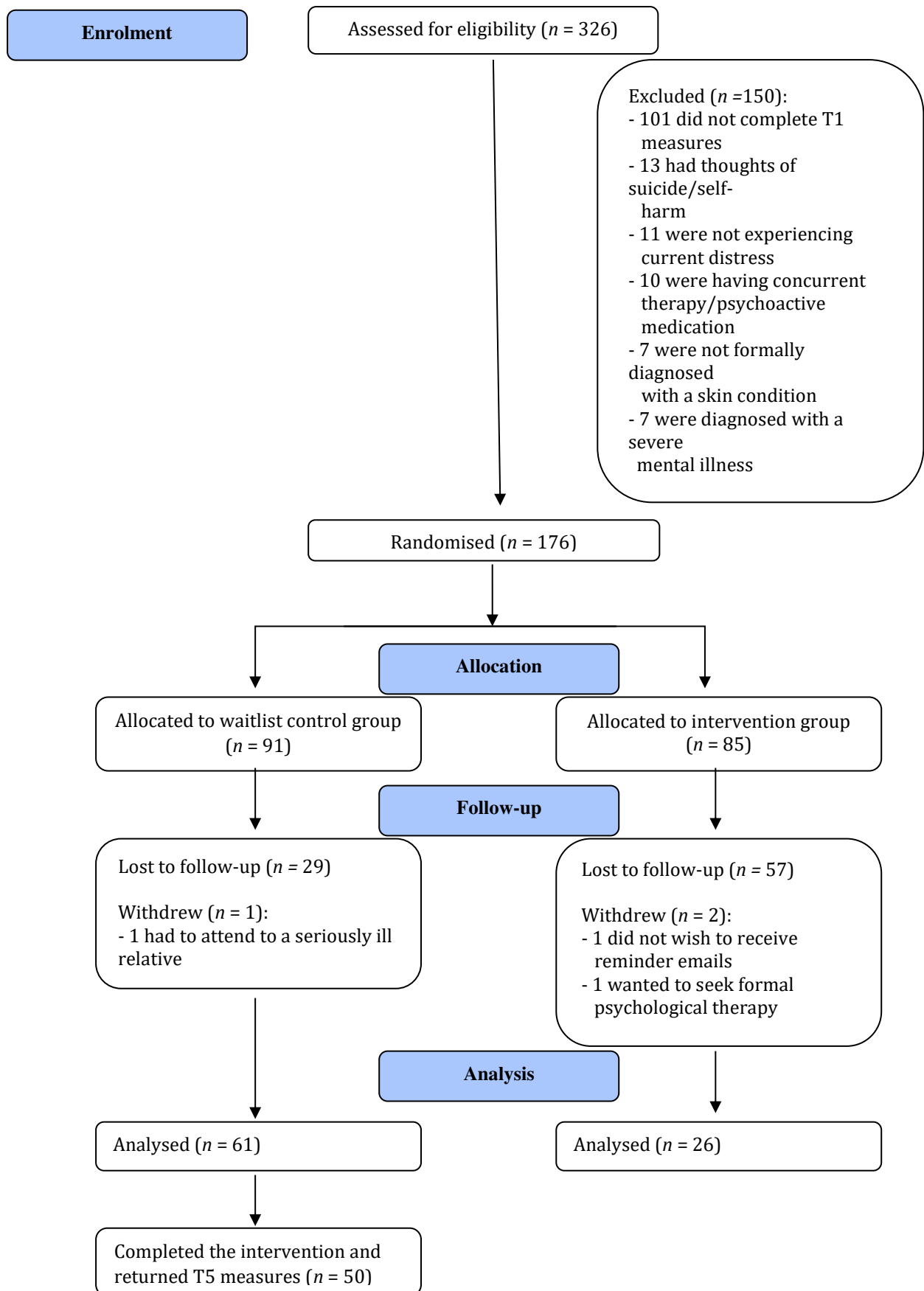


Figure 1. CONSORT diagram of participant flow through the study (Adapted from Schulz et al., 2010).

Table 1

Baseline Demographic Characteristics of the Participants

Variable	Overall (<i>N</i> = 176)	Control group (<i>n</i> = 91)	Intervention group (<i>n</i> = 85)	Test statistic
Age, <i>M</i> (<i>SD</i>)	33.81 (12.84)	34.78 (12.83)	32.62 (12.85)	<i>t</i> (143) = 1.01, <i>p</i> = .32
Gender, <i>n</i> (%)				
Male	25 (14.2)	13 (14.3)	12 (14.1)	
Female	151 (85.8)	78 (85.7)	73 (85.9)	$\chi^2 = .00, p = .98$
White British, <i>n</i> (%)	122 (69.3)	59 (64.8)	63 (74.1)	$\chi^2 = 1.52, p = .29$
Single, <i>n</i> (%)	84 (47.7)	42 (46.2)	42 (49.4)	$\chi^2 = 1.28, p = .72$
Paid employment, <i>n</i> (%)	102 (58.0)	58 (63.8)	44 (51.7)	$\chi^2 = 2.13, p = .14$
Higher education qualification, <i>n</i> (%)	91 (51.7)	46 (50.6)	45 (53.0)	$\chi^2 = .01, p = .93$
Skin condition, <i>n</i> (%)				
Eczema	33 (18.8)	16 (17.6)	17 (20.0)	
Psoriasis	14 (8)	8 (8.8)	6 (7.1)	
Acne	14 (8.0)	7 (7.7)	7 (8.2)	
Alopecia	65 (36.9)	35 (38.5)	30 (35.3)	
Two or more	25 (14.2)	13 (14.3)	12 (14.1)	
Other	14 (8.0)	7 (7.7)	7 (8.2)	$\chi^2 = .44, p = .99$
Years since diagnosis, <i>M</i> (<i>SD</i>)	7.77 (3.61)	7.54 (3.84)	8.02 (3.35)	<i>t</i> (173) = -.90, <i>p</i> = .37
Previous meditation Experience, <i>n</i> (%)	26 (14.8)	14 (15.4)	12 (14.1)	$\chi^2 = .01, p = .98$

Table 2

Baseline Data on the Outcome Measures

Questionnaire	Overall <i>M</i> (<i>SD</i>)	Control <i>M</i> (<i>SD</i>)	Intervention <i>M</i> (<i>SD</i>)	<i>t</i> -test
PSS-10	22.86 (5.75)	22.37 (5.50)	23.48 (5.78)	<i>t</i> (174) = -1.31, <i>p</i> = .19
DLQI	12.06 (6.93)	11.60 (6.86)	12.55 (7.01)	<i>t</i> (174) = -.91, <i>p</i> = .37
SCS	31.98 (7.78)	32.98 (7.19)	30.89 (8.21)	<i>t</i> (174) = 1.79, <i>p</i> = .08
HADS-A	10.53 (3.50)	10.27 (3.28)	10.80 (3.73)	<i>t</i> (174) = -.99, <i>p</i> = .32
HADS-D	6.72 (3.73)	6.52 (3.55)	6.94 (3.92)	<i>t</i> (174) = -.75, <i>p</i> = .45

Table 3

Pre-Post Change on the Outcome Measures by Group in the Completer Analyses

Questionnaire	Group	Pre-Treatment <i>M (SD)</i>	Post-Treatment <i>M (SD)</i>	Test Statistic	df	<i>p</i>	Effect Size (90% CI)
PSS-10	Waitlist	22.93 (5.77)	24.07 (5.92)	$F = 11.59$	1, 84	.001	Partial $\eta^2 = .12$ (.03, .23)
	CFT self-help	23.04 (5.53)	20.46 (5.81)				
DLQI	Waitlist	11.79 (6.97)	10.85 (6.95)	$t = 3.62$	85	<.001	$\eta^2 = .13$ (.04, .25)
	CFT self-help	11.19 (6.98)	6.58 (4.16)				
SCS	Waitlist	31.70 (7.09)	31.20 (7.06)	$F = 7.46$	1, 84	.01	Partial $\eta^2 = .08$ (.01, .18)
	CFT self-help	30.31 (7.12)	34.81 (7.32)				
HADS-A	Waitlist	10.61 (3.39)	10.93 (3.62)	$F = 8.89$	1, 84	.004	Partial $\eta^2 = .10$ (.02, .20)
	CFT self-help	11.08 (3.49)	9.50 (3.65)				
HADS-D	Waitlist	6.80 (3.81)	7.46 (3.98)	$F = 5.21$	1, 84	.03	Partial $\eta^2 = .06$ (.004, .15)
	CFT self-help	6.36 (4.23)	5.69 (3.26)				

Table 4

Pre-Post Change on the Outcome Measures by Group in the ITT Analyses

Questionnaire	Group	Pre- Treatment <i>M (SD)</i>	Post- Treatment <i>M (SD)</i>	Test Statistic	df	<i>p</i>	Effect Size (90% CI)
PSS-10	Waitlist	22.37 (5.50)	23.15 (5.65)	$F = 6.75$	1, 173	.01	Partial $\eta^2 = .04$ (.005, .09)
	CFT self-help	23.48 (5.78)	22.67 (6.03)				
DLQI	Waitlist	11.60 (6.86)	10.96 (6.96)	$F = 4.28$	1, 173	.04	Partial $\eta^2 = .02$ (.001, .07)
	CFT self-help	12.55 (7.01)	10.65 (6.96)				
SCS	Waitlist	32.98 (7.19)	32.51 (7.15)	$t = -2.02$	174	.045	$\eta^2 = .02$ (.000, .07)
	CFT self-help	30.89 (8.21)	32.18 (8.66)				
HADS-A	Waitlist	10.27 (3.28)	10.41 (3.50)	$F = 6.84$	1, 173	.01	Partial $\eta^2 = .04$ (.005, .10)
	CFT self-help	10.80 (3.73)	10.02 (3.88)				
HADS-D	Waitlist	6.52 (3.55)	7.00 (3.69)	$F = 5.01$	1,173	.03	Partial $\eta^2 = .03$ (.002, .08)
	CFT self-help	6.94 (3.92)	6.64 (3.64)				