

This is a repository copy of *Surface Expression of Basal and Englacial Features, Properties, and Processes of the Greenland Ice Sheet*.

White Rose Research Online URL for this paper:

<https://eprints.whiterose.ac.uk/150943/>

Version: Published Version

---

**Article:**

Cooper, M. A. [orcid.org/0000-0002-4054-6783](https://orcid.org/0000-0002-4054-6783), Jordan, T. M., Siegert, M. J. et al. (1 more author) (2019) Surface Expression of Basal and Englacial Features, Properties, and Processes of the Greenland Ice Sheet. *Geophysical Research Letters*. pp. 783-793. ISSN 0094-8276

<https://doi.org/10.1029/2018GL080620>

---

**Reuse**

This article is distributed under the terms of the Creative Commons Attribution (CC BY) licence. This licence allows you to distribute, remix, tweak, and build upon the work, even commercially, as long as you credit the authors for the original work. More information and the full terms of the licence here:

<https://creativecommons.org/licenses/>

**Takedown**

If you consider content in White Rose Research Online to be in breach of UK law, please notify us by emailing [eprints@whiterose.ac.uk](mailto:eprints@whiterose.ac.uk) including the URL of the record and the reason for the withdrawal request.

# Geophysical Research Letters



## RESEARCH LETTER

10.1029/2018GL080620

### Key Points:

- High-resolution surface topography provides spatially coherent information on specific subglacial geometry and basal processes
- Basal ice units revealed by a marked expression in the ice sheet surface act as “false bottoms” and englacial slip surfaces
- New clarity identifying complex, small-scale, and anisotropic basal features where radar data are sparse

### Supporting Information:

- Supporting Information S1
- Movie S1

### Correspondence to:

M. A. Cooper,  
m.a.cooper@bristol.ac.uk

### Citation:

Cooper, M. A., Jordan, T. M., Siegert, M. J., & Bamber, J. L. (2019). Surface expression of basal and englacial features, properties, and processes of the Greenland Ice Sheet. *Geophysical Research Letters*, 46, 783–793. <https://doi.org/10.1029/2018GL080620>

Received 25 SEP 2018

Accepted 5 JAN 2019

Accepted article online 9 JAN 2019

Published online 19 JAN 2019

## Surface Expression of Basal and Englacial Features, Properties, and Processes of the Greenland Ice Sheet

M. A. Cooper<sup>1</sup> , T. M. Jordan<sup>1,2</sup>, M. J. Siegert<sup>3</sup> , and J. L. Bamber<sup>1</sup>

<sup>1</sup>Bristol Glaciology Centre, School of Geographical Sciences, University of Bristol, Bristol, UK, <sup>2</sup>Department of Geophysics, Stanford University, Stanford, CA, USA, <sup>3</sup>Grantham Institute for Climate Change, and Department of Earth Science and Engineering, Imperial College London, London, UK

**Abstract** Radar-sounding surveys measuring ice thickness in Greenland have enabled an increasingly “complete” knowledge of basal topography and glaciological processes. Where such observations are spatially limited, bed elevation has been interpolated through mass conservation or kriging. Ordinary kriging fails to resolve anisotropy in bed geometry, however, leaving complex topography misrepresented in elevation models of the ice sheet bed. Here, we demonstrate the potential of new high-resolution ( $\leq 5$  m) surface topography data (ArcticDEM) to provide enhanced insight into basal and englacial geometry and processes. Notable surface features, quantified via residual surface elevation, are observed coincident with documented subglacial channels, and new, smaller-scale tributaries ( $< 2,000$  m in width) and valley-like structures are clearly identified. Residual surface elevation also allows the extent of basal ice units to be mapped, which in conjunction with radar data indicate that they act as “false bottoms,” likely due to a rheological contrast in the ice column.

**Plain Language Summary** Newly available high-resolution ( $\leq 5$  m) surface elevation maps of the Greenland Ice Sheet present a useful lens for examining and exploring the subglacial landscape, as well as the physical processes operating subglacially and englacially. Where radar data, which measure the subsurface geometry and properties, are sparse, we show how surface expressions can be used to enable effective interpolation between sets of bed data, allowing enhanced appreciation of ice sheet processes and boundary conditions. We also show that a subset of surface expressions originate from englacial slip surfaces or “false bottoms,” allowing the extrapolation of the 2-D areal/horizontal extent of these features, not previously possible from radar flight lines alone.

## 1. Introduction

Advances in understanding basal processes of the Greenland Ice Sheet (GrIS) have primarily been driven by the need to refine projections of the ice sheet’s response to climate change using numerical models. An increase in observations of ice thickness, obtained using airborne ice-penetrating radar (IPR), has enabled improved representation of Greenland’s bed topography and, consequently, the production of progressively accurate and spatially “complete” (without holes) bed digital elevation models (DEMs; e.g., Bamber, Griggs, et al., 2013; Bamber et al., 2001; Morlighem et al., 2014, 2017). IPR data, therefore, provide a necessary input to ice sheet modeling and also allow for the assessment of more specific basal and englacial properties, including subglacial roughness and its anisotropy (e.g., Jordan et al., 2017; Lindbäck & Pettersson, 2015; Rippin, 2013); ice rheology, through the measurement of englacial stratigraphy (e.g., Karlsson et al., 2013; MacGregor, Fahnstock, et al., 2015); englacial temperature from radar attenuation (e.g., MacGregor, Li, et al., 2015); and determining the distribution of basal water from bed-echo reflectivity (e.g., Jordan et al., 2018; Oswald et al., 2018). Despite the influence of basal processes upon ice dynamics being theoretically well constrained (Cuffey & Paterson, 2010; van der Veen, 2013), our understanding of spatial variation in subsurface conditions and processes remains restricted by the paucity of IPR data; consequently, observation-led interrogation is required to understand the magnitude of their effects in situ.

While the number of IPR ice thickness observations has roughly tripled in the past decade, there remain large swathes of the GrIS left unobserved (see Figure 1a in Morlighem et al., 2017). Limitations in IPR coverage, and spatial bias due to variation in observation density, often result in the mapping and assessment of basal geometry and processes being reliant on spatial interpolation between flight tracks. Interpolation has

©2019. The Authors.

This is an open access article under the terms of the Creative Commons Attribution License, which permits use, distribution and reproduction in any medium, provided the original work is properly cited.

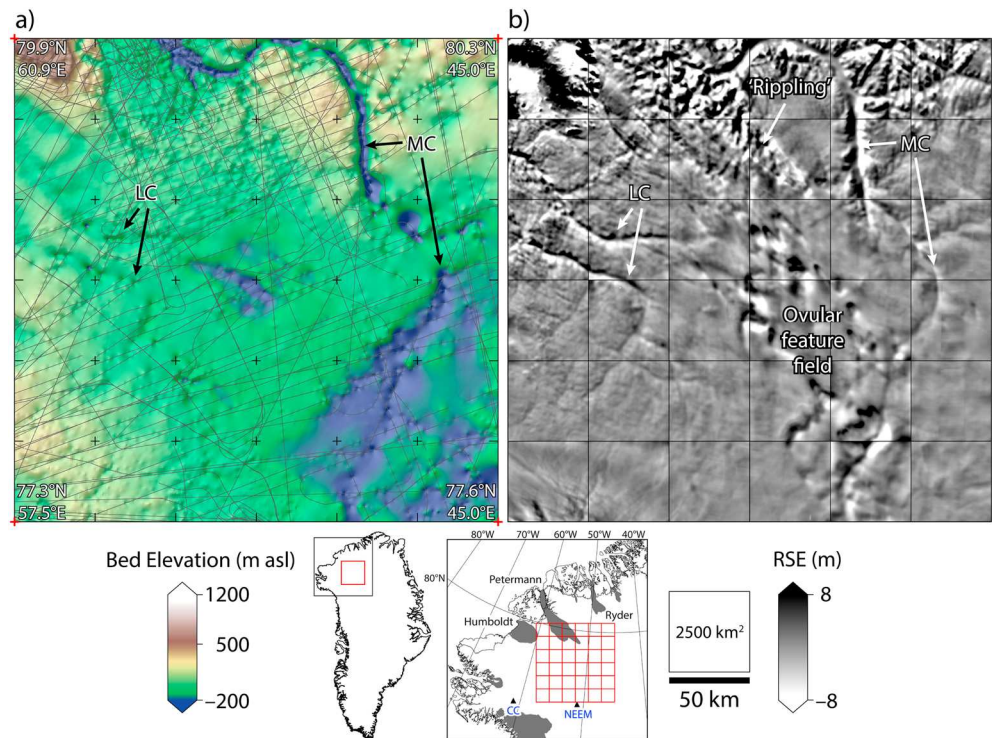
primarily been applied to the construction of bed topographies (Bamber, Griggs, et al., 2013; Morlighem et al., 2017), but also the tracing of englacial stratigraphy (Bons et al., 2016; MacGregor, Fahnestock, et al., 2015), and the mapping of subglacial roughness (Rippin, 2013). Interpolated bed DEMs have enabled the “discovery” of large-scale landscape systems beneath the GrIS (e.g., Bamber, Siegert, et al., 2013; Cooper et al., 2016; Livingstone et al., 2017) confirming that the identification of more nuanced interrelationships between basal topography and the overlying ice is now possible. In this vein, process-based assessments have attempted to understand the relationship between ice flow and bed topography, with focus on aspects of landscape genesis, evolution, preservation, and inheritance in Antarctica (e.g., Bingham et al., 2017; Rose et al., 2013, 2015; Ross et al., 2014) and Greenland (Cooper et al., 2016; Livingstone et al., 2017).

The most recent data sets for Greenland bed topography have employed a “mass conservation” interpolation between flight lines in fast-flowing regions (Morlighem et al., 2014, 2017). However, the majority of the bed in the latest product (BedMachine v3, referred to here as BM3), primarily the slow-flowing ice sheet interior, was interpolated using ordinary (isotropic) kriging (Morlighem et al., 2017). In observation-sparse areas, this approach generates surfaces that fail to represent the “true” geometry of anisotropic basal features (i.e., quasi-linear geometries): Rendered surfaces can appear artificially smooth (Williams et al., 2017) or result in “bulls-eye” anomalies manifesting as a series of isolated peaks and/or hollows (Dentith & Mudge, 2014). Although BM3 is provided at a posting of 150 m, the true resolution of the estimated surface is dependent upon the local observation density (i.e., the level of clustering) and sampling regime (i.e., the flight line spacing; Morlighem et al., 2017). Since parallel track spacing over the ice sheet interior is up to 75 km, it is important, therefore, to consider the need for a spatially consistent method through which to assess basal morphology and associated basal and englacial processes without the artifacts associated with interpolation.

The transfer of basal information from “bed-to-surface” has long been appreciated, with knowledge of local ice velocity and flow parameters being used to calculate bed topography along a profile of the surface (Budd, 1970). More recently, surface and subsurface data have been used to better constrain this transfer of basal information, with particular reference to spatial variability in basal traction (De Rydt et al., 2013; Gudmundsson, 2003; Gudmundsson & Raymond, 2008). However, it is widely understood that local variations in flow regime and surface topography are more suitably explained by undulations in subglacial topography (De Rydt et al., 2013). It is yet to be determined whether this modeled basal transfer (as in Gudmundsson, 2003) can be applied generally, especially where ice thickness and speed vary considerably. This is perhaps exemplified through the application of mass conservation interpolation being limited to regions of fast flow (Morlighem et al., 2014, 2017). While recent efforts have been made to characterize basal information transfer across the interior of the GrIS, where velocity is low and basal slip is spatially heterogeneous, the success of this is limited to more large-scale patterns, arguably by computational means (Ignéczki et al., 2018; Ng et al., 2018). Outside theoretical frameworks, and particularly in the interior of Antarctica, numerous observational studies have demonstrated the relationship between surface and basal geometry (Le Brocq et al., 2008; Rémy & Minster, 1997; Rose et al., 2014; 2015; Ross et al., 2014). For example, subglacial lakes manifest as flat surfaces in the overlying ice sheet, due to the negligible basal friction above them (Ridley et al., 1993; Siegert & Ridley, 1998). Such research has benefited from ice sheet surface brightness or topography, including analyses of surface curvature, to determine bed features and subglacial landscape (Le Brocq et al., 2008; Rose et al., 2014; 2015; Ross et al., 2014).

While both ice surface observation- and model-led approaches reveal important information about subsurface processes in areas of sparse observational data, much of the small-scale topography of the Greenland interior remains uncharted; this is primarily due to the relative coarseness (spatial resolution) of previously available surface imagery (e.g., Moderate Resolution Imaging Spectroradiometer surface brightness, as used in Ross et al., 2014, and others), and the complexities in modeling transfer of information from bed to surface (De Rydt et al., 2013). However, with the recent release of a new high-resolution ( $\leq 5$  m) pan-Arctic DEM (ArcticDEM; Morin et al., 2016; <https://www.pgc.umn.edu/data/arcticdem/>), there is an opportunity to improve our knowledge of spatially heterogeneous basal conditions using the ice surface topography rather than, or in conjunction with, IPR data.

Here, we explore the potential for ArcticDEM ice surface information—specifically the residual surface elevation (RSE)—to provide a “lens” for subsurface processes in Greenland. From this, we present evidence for previously undocumented complex basal topographies and characterize the influence of ice dynamics on the



**Figure 1.** Bed topography and residual surface elevation (RSE) for Northwest Greenland. Study location inset, including fast-flowing ice ( $>50 \text{ ma}^{-1}$  [gray]) and ice core drilling sites (CC and NEEM). (a) BM3 (Morlighem et al., 2017). Ice-penetrating radar survey coverage (dark gray). (b) RSE. Red and black grids show the spatial extent of individual ArcticDEM tiles; labels LC and MC refer to subglacial channel systems, documented by Livingstone et al. (2017) and Bamber, Siegert, et al. (2013), respectively.

ice surface. We also provide evidence that some surface expressions are likely a result of englacially discrete, rheological boundaries and improve the mapping of “units of disrupted radiostratigraphy” (UDRs; Bell et al., 2014; Dow et al., 2018; Leysinger Vieli et al., 2018; Wolovick et al., 2014). We compare results inferred from surface data with BM3 and highlight the importance of topographic anisotropy and scale both in the planning of geophysical surveys and spatial interpolation. Finally, to understand the relationship between the surface expression and basal processes we compare with complementary data sets: basal water (Jordan et al., 2018), geothermal heat flux (Martos et al., 2018), basal slip (MacGregor et al., 2016), and ice velocity (Joughin et al., 2016, 2017).

## 2. Calculating RSE

The ArcticDEM is a newly released collection of Earth surface DEMs produced using high-resolution ( $\sim 0.5 \text{ m}$ ) stereopair imagery, collected by DigitalGlobe Inc. optical satellites. The DEM is supplied by the Polar Geospatial Center in two formats: the “ArcticDEM Strip” format (2-m resolution) and tiled “Mosaic” format (5-m resolution). The Mosaic format was used here owing to both its spatial regularity ( $50 \text{ km} \times 50 \text{ km}$ ;  $2,500\text{-km}^2$  tiles), increased data coverage, improved absolute accuracy, and fewer artifacts. A total of 36 tiles, covering an area of  $\sim 90,000 \text{ km}^2$  over northwest Greenland, south of Petermann Glacier, defines the study region (Figures 1 and S1 in the supporting information). This region was chosen due to its relatively high, and spatially dense, coverage of IPR data (Figure 1a); additionally, studies mapping and understanding of both englacial (e.g., Bell et al., 2014; Chu et al., 2018) and basal features/properties (e.g., Bamber et al., 2013; Livingstone et al., 2017) have also focused on this region. This facilitates both the comparison and validation of this paper’s conclusions, in order to better assess the capability of high-resolution surface information in extracting subsurface information.

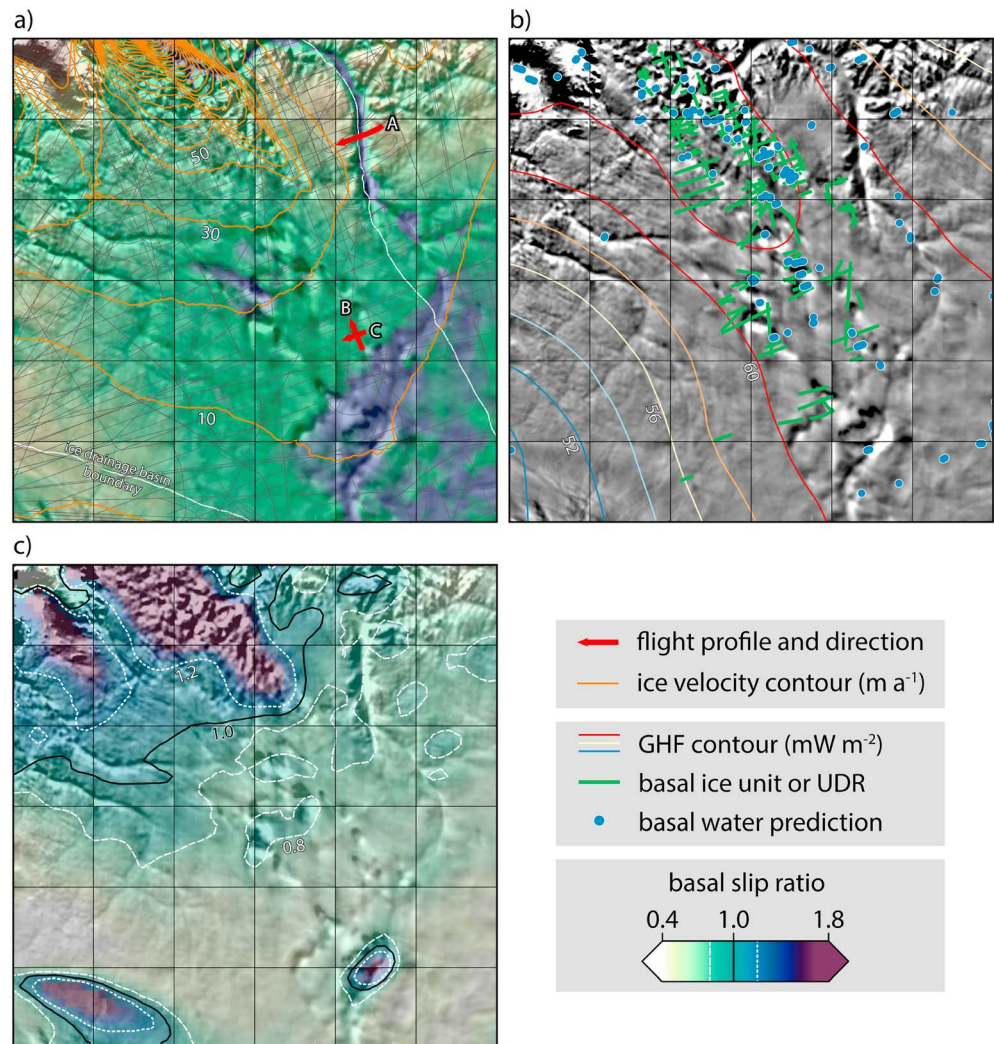
Ice sheet surface topography is influenced by underlying basal conditions (i.e., geometry) and processes (e.g., Gudmundsson, 2003; Rémy & Minster, 1997). Compared to the dominant signal of an ice sheet's surface slope (which is approximately parabolic, or dome like), however, this influence yields a much smaller change at the ice surface, both in terms of amplitude and wavelength. To help resolve the influence of basal geometry, large-scale surface slopes must be removed. We calculated a third-order polynomial trend surface for each ArcticDEM tile, using least squares regression, to detrend surface topography, leaving the RSE (Figure 1b). The RSE preserves local surface features down to a minimum wavelength of about 1 km, which are then interpreted as manifestations of basal topography or englacial surfaces (section 3). While the ArcticDEM boasts a much finer scale than this, it is probable that smaller-wavelength features are not resolvable due to the dampened transfer of basal information as a result of ice thickness (De Rydt et al., 2013); for such features “direct” observation using IPR data are likely necessary. Additional second- and fourth-order polynomial surfaces were used; however, no marked improvement, in terms of interpretable “features,” was observed. By contrast, the third-order surface performed better over ice divides and at ice margins when compared to fitting a second-order polynomial.

Various feature extraction methods have been employed to obtain bed geometry from ice surface topographies, and surface brightness. This includes edge detectors (e.g., Ekholm et al., 1998) and isolating local topographic change through the calculation of profile curvature (of Moderate Resolution Imaging Spectroradiometer imagery, e.g., Ross et al., 2014). While these methods are usually dimensionless (without vertical information) and only reveal relative changes at the bed, spatial patterns in basal geometry can still be interpreted. We repeated these approaches for the new ArcticDEM (Figures S2a–S2c), alongside a calculation of RSE for a more coarse surface topography (90-m resolution) DEM (Figure S2d; Greenland Ice Mapping Project, GIMP; Howat et al., 2014). Although a 30-m GIMP DEM is available, the latter comparison was undertaken to explicitly assess whether topography at a greater spatial resolution (i.e., ArcticDEM) can provide enhanced subsurface information. RSE calculated for the 30-m GIMP DEM provides a near-similar level of information provided by the ArcticDEM; however, for the purpose of this paper we rely on the new, and higher-resolution ArcticDEM for further analysis.

### 3. Interpreting Surface Expressions

RSE (Figure 1b) can be interpreted similar to a relative DEM, where surface undulations are attributed to bed undulations or, as we later demonstrate, basal-englacial UDRs. Various geometric features, including lineations, troughs, and peaks, are visible in the RSE (Movie S1). Interpretation of these features is facilitated by the comparison with BM3 (Morlighem et al., 2017) and along-track radargrams from National Aeronautics and Space Administration's Operation IceBridge (Rodríguez-Morales et al., 2014; Figure 1a), as well as with complementary data sets (Figure 2), including interferometric synthetic aperture radar-derived surface ice velocity (Joughin et al., 2016), radar-derived basal water (Jordan et al., 2018), and magnetic-derived geothermal heat flux (Martos et al., 2018). On initial comparison to BM3, the RSE (Figure 1b) replicates fundamental landscape features. Most notably these are large, and previously documented, dendritic channel networks, such as the “mega-canyon” flowing toward Petermann Glacier (Bamber, Siegert, et al., 2013), and the two channels linked with Humbolt Glacier (Livingstone et al., 2017; MC and LC, respectively; Figure 1a). Further, RSE broadly simulates the overall trends in basal topography (acting similarly to a topographic “hillshade,” Figure 2a), and in observation-sparse regions it delineates previously undocumented morphological features (see sections 3.1 and 3.2 and Figure 1b). This confirms that the ice surface can be used to explore basal geometries, which are poorly constrained by the shortcomings of isotropic interpolation between sparse/transsect-based observations.

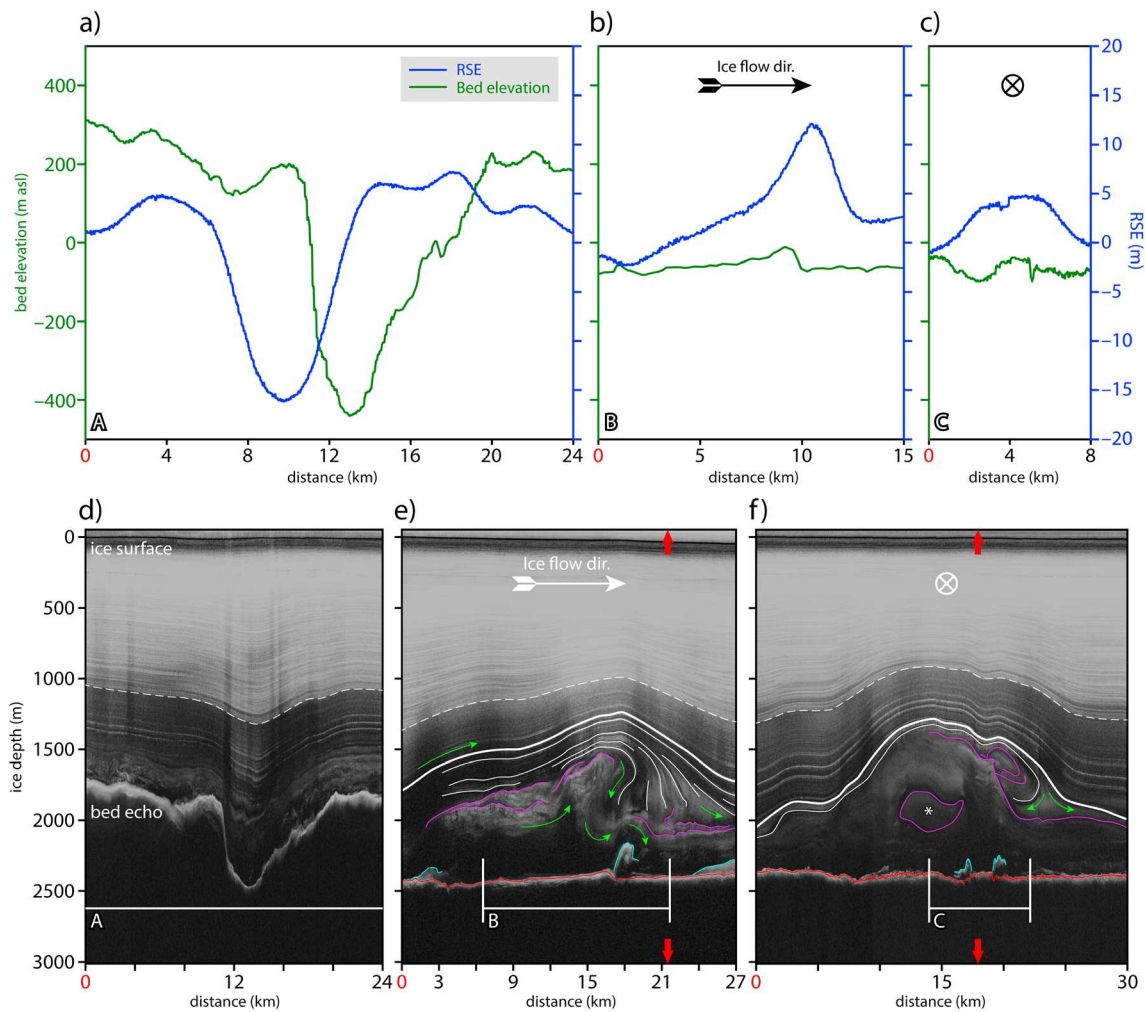
There are, however, notable signals and features present in the RSE that do not appear to reflect likely basal topography; instead, these features result from ice dynamics and/or UDRs. In the first instance, a marked “rippling” is observed in the RSE coincident with Petermann Glacier, extending southeast (Figure 1b). While this signal appears linked to a spatial transition in the ice speed, there is no direct relationship to magnitude (Figures 2a and S3). Evidence of streaming ice is identified by the tight spacing of velocity contours, delineating pronounced shear margins (Figure 2a) and an elevated basal slip ratio (Figure 2c; MacGregor et al., 2016). It is at shear margins, where strain rates and shear stress



**Figure 2.** Comparison of observed surface features to auxiliary geophysical data. (a) RSE with BM3 transparency (as Figure 1a). Ice-penetrating radar coverage as per Figure 1a and Greenland Ice Sheet drainage basins are delineated (Zwally et al., 2012), surface velocity contours at 10-m/a intervals (Joughin et al., 2016), and profiles A–C are presented in Figure 3. (b) RSE with geothermal heat flux (GHF) contours at 2-mW/m<sup>2</sup> intervals (Martos et al., 2018), radar predictions for basal water (Jordan et al., 2018), and locations of “basal ice units” (Bell et al., 2014). (c) RSE with basal slip ratio transparency (MacGregor et al., 2016), values of 0.8 (dashed), 1.0 (black), and 1.2 (dotted) are delineated. RSE = residual surface elevation; UDR = unit of disrupted radiostratigraphy.

are high, and within fast-flowing ice, that ice is likely to become decoupled from the bed (Cuffey & Paterson, 2010). Spatial similarity between the observed RSE rippling features, shear margins as evidenced by velocity contours, and modeled driving and basal shear stress is observed (see Figure 3 in Sergienko et al., 2014). It is, therefore, plausible that the coincident response in ice surface topography may result from changes in ice flow parameters (i.e., decoupling) and a more efficient transfer of large-scale basal undulations, resulting from increased slip (De Rydt et al., 2013; Gudmundsson, 2003).

On the other hand, south of Petermann Glacier, in a relatively flat and low-lying area of the bed (Figure 1a), multiple ovular features are observed in the RSE (Figure 1b). UDRs have been documented across this sector of the GrIS in radiostratigraphy (Bell et al., 2014; Dow et al., 2018; Leysinger Vieli et al., 2018; Wolovick et al., 2014). The established locations of most of these units correspond to the ovular/lobed features observed in the RSE (Figure 2b). The genesis and interrelationship with local ice flow parameters of these UDRs are discussed below.



**Figure 3.** Bed elevation, RSE, and radargrams at locations A–C. Ice surface flow direction along profiles B and C is marked, where for profile A this is oblique to the page ( $\sim 65^\circ$ ). Profile length has been extended in (e) and (f); labeled cutlines depict the original length. (d–f) Annotated for englacial stratigraphy interpreted in text (unannotated in Figure S4). Englacial layers that correlate with “surface ice” are shown (white lines), where the thickest line represents the first complete layer above the unit of disrupted radiostratigraphy; dashed white line denotes the separation between Holocene ice (above) and Last Glacial Period ice (below). Radiostratigraphy within reflective basal ice are shown in purple, and near-bed reflectors beneath nonreflective ice are blue. The asterisk in (f) is interpreted as an inner ellipse within a sheath fold. Bed echo (red) and ice surface returns are labeled. Red arrows  $x$  axes (e and f) mark the location at which (f) orthogonally ( $\sim 90.1^\circ$ ) bisects the plane of (e). There is a vertical exaggeration by a factor of 19.35 and 11.45, for (a)–(c) and (d)–(f), respectively. RSE = residual surface elevation.

### 3.1. “Ground Truthing” RSE

To disentangle the primary causes of the surface features (Figure 1b), comparison can be made against radar-derived bed elevation and stratigraphy. Three illustrative profiles are shown in Figure 3. Profile A provides a near-perpendicular cross section of the MC (Bamber, Siegert, et al., 2013), where profiles B and C present near-orthogonal bisectors of a UDR. Although a marked response in RSE is apparent along all three transects, the nature of these differ (Figures 3a–3c). RSE along profile A follows basal topography with a corresponding negative, smoothed, facsimile of bed elevation; however, this response is notably out of phase. This is likely a function of ice flow direction ( $\sim 65^\circ$  from profile; Figure S3), as well as ice rheology, thickness, and thermal regime, all of which affect the efficiency of bed-to-surface transmission (De Rydt et al., 2013; Gudmundsson, 2003). This informs us that although additional influences impinge the bed-to-surface transfer, we can still extract information regarding the scale and geometry of the basal feature using RSE. While a large positive response in RSE is observed along profiles B and C, little variation is observed in sampled bed elevation (standard deviation  $\leq 19$  m); it is unlikely, therefore, that basal topography is the primary cause.

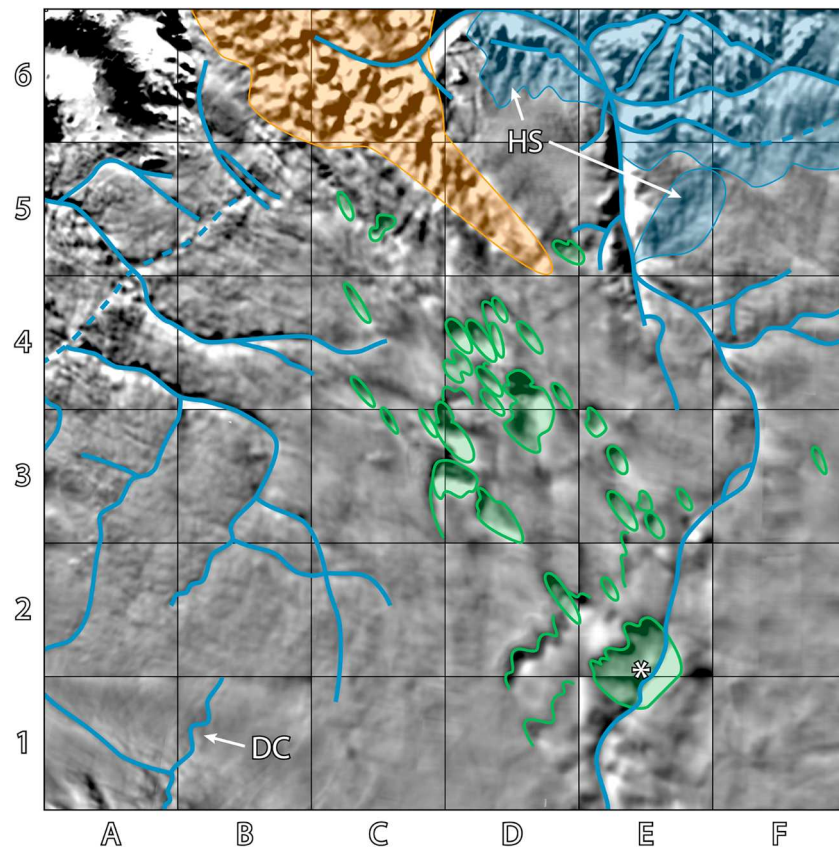
When considering returned power across the MC (profile A; Figure 3d), englacial stratigraphy generally conforms with basal topography. Specifically, some layer disturbance is partially visible toward the base of the ice column, but at this depth the ice has few radio-reflecting horizons. The dashed white line on all profiles indicates the transition in englacial stratigraphy between the Holocene ice above and the “softer” ice of the Last Glacial Period, below (Chu et al., 2018; Dahl-Jensen & Gundestrup, 1987; Huybrechts, 1994). Above the canyon (Figure 3d) this better documents the “dampening” effect in the transfer of basal information in englacial stratigraphy toward the surface (De Rydt et al., 2013), presenting a smoother transfer of the bed geometry in the RSE (Figure 3a).

Radargrams from profiles B and C (Figures 3e, 3f, and S4) depict a significant UDR (Figure 3a, Bell et al., 2014 and Figure 1, Wolovick et al., 2014), with a thickness up to one half of the ice column (~1,000 m). When comparing the observed structure and reflectance characteristics of the UDR (Figures 3e, 3f, and S5) against similar features described in Greenland (Wolovick et al., 2014) and Antarctica (Wrona et al., 2017), we see several similarities. Large-scale cylindrical folding of this unit is also present, with the axis aligned perpendicular to flow (Figure 3e); more notably, a lobular extension from the top of the basal ice, elongated in the direction of surface ice flow, is similar to the “finger structures” observed in Antarctica formed through the entrainment of the softer basal unit into the overlying ice (Wrona et al., 2017). Across flow a central “eyelet” is observed within the UDR (asterisk, Figure 3f), indicative of extension/deformation of the unit parallel to the flow direction, characteristic of sheath folding (Wolovick et al., 2014; Wrona et al., 2017). The radiostratigraphy broadly shows the overlying ice flow “up-and-over” the UDR (Figures 3e and 3f) mostly undisturbed; this reflects the likely cause of the positive rise in RSE (Figure 3b), whereby the basal unit is hypothesized to act as a “false topographic bed,” over which the upper ice layers conform. It is, therefore, possible that by using RSE we are able to better map or extrapolate the 2-D areal/horizontal extent of UDRs where directly observed in radargrams; however, in observation-sparse regions (away from IPR flight lines), the cause of such oval surface expressions is likely to be more ambiguous, as internal surfaces and certain bed geometry (e.g., basins and topographic rises) could present similarly, as such “additional” UDRs (those not previously documented) cannot be confidently mapped using RSE. To better answer this would require the implementation of a bed-to-surface transfer framework (as in Gudmundsson, 2003; De Rydt et al., 2013), which is beyond the scope of this paper.

Specifically, at the point of bisection between profiles B and C, we can use radar power anisotropy to make a preliminary assessment of vertical changes in the horizontal dielectric anisotropy of the ice column and related asymmetry of the ice crystal orientation fabric (COF; Fujita et al., 2006; Hargreaves, 1978). Radar power anisotropy is influenced by both birefringent propagation (associated with horizontal COF anisotropy that varies smoothly with ice depth) and anisotropic scattering (associated with sharp vertical transitions in the COF; e.g., Fujita et al., 2006). Specifically, at middepths (~900–1,700 m), we observe oscillations in the across/along-flow power difference as a function of depth (Figure S5b). The ~10-dB amplitude and smoothly varying depth periodicity are seen to be consistent with power modulation dominated by birefringent radio wave propagation through the ice column (Fujita et al., 2006; Matsuoka et al., 2012). This implies smoothly varying horizontal asymmetry of the COF (i.e., the presence of either a vertical girdle fabric distribution or elongated single maximum). In both more shallow and deeper ice, the power difference shows greater isotropy, implying a weaker horizontal asymmetry of the COF. This is likely representative of a near-random fabric in shallow ice and a strengthened single maximum in deeper ice. As previously noted, the Holocene-Last Glacial Period transition is marked by a change in returned power (Chu et al., 2018) and is observed at ~900 m (Figures 3d–3f and S5a), approximately coincident with the point at which we infer the development of horizontal asymmetry in the COF.

Multiple hypotheses surrounding the inception of UDRs exist, including bottom-up accretion through supercooling and basal freeze-on (Bell et al., 2014; Leysinger Vieli et al., 2018), thermomechanical changes resulting from anisotropic ice rheology, or changes in rheology affected by “stick-slip” mechanisms (Bons et al., 2016; Weertman, 1976; Wolovick et al., 2014). The latter of these mechanisms, initiated either by velocity changes within the ice column or in basal thermal state, would give rise to large-scale folding and deformation like that seen here (Weertman, 1976; Wolovick et al., 2014). While it has been noted that some UDRs in Greenland do not have a clear relationship to known basal water networks (Wolovick et al., 2014), the distribution of observed features is consistent with radar basal water predictions (Chu et al., 2018; Jordan et al., 2018). Additionally, these are within a region of elevated geothermal heat flux ( $>58$  mW/m<sup>2</sup>; Martos et al.,





**Figure 4.** Summary of residual surface elevation with reference to basal and englacial processes and landforms. Subglacial channel features are delineated (blue lines), valley-like areas (blue shade), with possible headstream catchments labeled (HS); DC depicts channel structure “flowing” across the ice divide. Possible units of disrupted radiostratigraphy are outlined (green), units where a “closed” areal extent is observable, due to marked edges/boundaries, are shaded green; whereby an asterisk marks a large unit of disrupted radiostratigraphy (documented in Leysinger Vieli et al., 2018) seen to be coincident with increased basal slip (Figure 2c). Velocity-driven manifestations upon surface topography are also highlighted (orange). Alphanumeric grid labels are used in text to further describe and highlight features.

2018; Figure 2b), and transitional basal thermal state (Chu et al., 2018; MacGregor et al., 2016). While hydrological modeling suggests minimal basal freeze-on rates (Dow et al., 2018; MacGregor et al., 2016), the correlation with these complementary geophysical properties, as well as evidence of multilobed sheath folding, may be symptomatic of heterogeneous basal sliding or altered ice rheology, ultimately leading to the formation of UDRs. This is compounded not only by an enhanced predicted basal motion over a particularly large UDR-feature observed in the RSE (Figure 2c; asterisk, 4; MacGregor et al., 2016) but also through the inferred depth transitions from a near horizontally isotropic to horizontally anisotropic COF (Figure S5). Altogether, this suggests that these UDR features may act, dynamically, as “false beds” with localized englacial “decoupling” across the upper boundary.

### 3.2. Mapping Basal Characteristics

Although the presence, and causes, of surface expressions observed in the RSE can be directly attributed to basal topographies and associated subglacial processes using IPR data, much of the true extent of these features cannot be realized due to sparse/absent observations. Figure 4 presents an annotated RSE, including our interpretation for the primary origin of surface expressions. We can map with greatest confidence quasi-linear topographic features, such as channel systems and dendritic fluvial landscape morphologies, though it is apparent that sites of significant basal UDRs, and velocity induced changes, plausibly indicative of glacier-bed decoupling, are also interpretable.

We are able to discern prominent bed geometries in the RSE, notably the additional detail in the landscape surrounding the MC and the northeast of the study region. Multiple, sinuous tributaries exist, as well as complex channel network and dendritic valley-like structures, suggestive of headwater catchments with several “minor” channels visible (<2,000 m in width; e.g., HS, Figure 4). Further, we see in tile E4 (Figure 4) that the MC appears to split into two upstream tributaries. It should be noted that where the RSE calculated for the more coarse resolution (90 m) GIMP DEM (Figure S2d) provides prominent basal channels (i.e., the MC), “fine” scale detail (i.e., HS, Figure 4) is not interpretable from the more “smoothed” information. While many channels are aligned quasi-parallel to contemporary ice flow direction, there are some channels that are aligned perpendicular to flow and, in one example, span the present-day ice divide (DC, Figure 4). Complex landscapes such as these are indicative of past fluvial activity and are often interpreted as inherited or partially preserved ancient fluvial systems, predating the inception of contemporary ice sheet. More “major” channels (in terms of great width and relative depth), and associated channel networks, are seen to influence contemporary ice flow and the routing of contemporary subglacial water (Bamber, Siegert, et al., 2013; Bingham et al., 2017; Cooper et al., 2016; Jordan et al., 2018; Livingstone et al., 2017).

#### 4. Conclusions

Here, we established the potential of the high-resolution (5 m) ArcticDEM to elucidate basal geometry with previously unobtainable detail. Where current geostatistically derived bed topographies rely on isotropic methods of interpolation (i.e., ordinary kriging), RSE provides a spatially complete proxy to constrain local (horizontal length scales ~1–10 km) morphology. This approach is particularly advantageous for anisotropic features within the ice sheet interior. Additionally, via combination with complementary IPR data, we can constrain dynamical basal features (e.g., subglacial drainage pathways) and englacial processes (e.g., the 2-D areal/horizontal extent of UDRs). Additionally, via the analysis of two bisecting radargrams, we have discussed how one such UDR has formed, as well as its dynamic relationship with the ice column. This permits correlation with, and influences of, and upon, surface flow characteristics (e.g., sheath folding, fold elongation, and localized englacial decoupling).

In summary, we illustrate a complex subglacial and englacial system in northwest Greenland, notably improving the delineation of anisotropic geometric features that had previously been possible, or poorly captured, using isotropic interpolation. While qualitative, knowledge regarding the presence of complex basal topography, or indeed basal and englacial processes, may prove valuable not only in facilitating the further understanding of bed-to-surface transfer, but also in working to constrain future interpolation methods, and aiding the design of more directed geophysical campaigns. In the first instance, RSE is able to provide vertical information (in meter units), absent in previous edge detection and curvature methods (Figures S2a–S2c). Where additionally, the positive identification of quasi-linear channels and dendritic valley networks can provide channel centerlines for physically based, anisotropic interpolation of bed topographies (exemplified in Goff et al., 2014; Herzfeld et al., 2011; Williams et al., 2017).

#### References

- Bamber, J. L., Griggs, J. A., Hurkmans, R. T. W. L., Dowdeswell, J. A., Gogineni, S. P., Howat, I., et al. (2013). A new bed elevation dataset for Greenland. *The Cryosphere*, 7(2), 499–510. <https://doi.org/10.5194/tc-7-499-2013>
- Bamber, J. L., Layberry, R. L., & Gogineni, S. P. (2001). A new ice thickness and bed data set for the Greenland ice sheet: 1. Measurement, data reduction, and errors. *Journal of Geophysical Research*, 106(D24), 33,773–33,780. <https://doi.org/10.1029/2001JD900054>
- Bamber, J. L., Siegert, M. J., Griggs, J. A., Marshall, S. J., & Spada, G. (2013). Paleofluvial mega-canyon beneath the central Greenland ice sheet. *Science*, 341(6149), 997–999. <https://doi.org/10.1126/science.1239794>
- Bell, R. E., Tinto, K., Das, I., Wolovick, M., Chu, W., Creys, T. T., et al. (2014). Deformation, warming and softening of Greenland's ice by refreezing meltwater. *Nature Geoscience*, 7(7), 497–502. <https://doi.org/10.1038/ngeo2179>
- Bingham, R. G., Vaughan, D. G., King, E. C., Davies, D., Cornford, S. L., Smith, A. M., et al. (2017). Diverse landscapes beneath Pine Island Glacier influence ice flow. *Nature Communications*, 8(1), 1618. <https://doi.org/10.1038/s41467-017-01597-y>
- Bons, P. D., Jansen, D., Mundel, F., Bauer, C. C., Binder, T., Eisen, O., et al. (2016). Converging flow and anisotropy cause large-scale folding in Greenland's ice sheet. *Nature Communications*, 7(1), 11427. <https://doi.org/10.1038/ncomms11427>
- Budd, W. F. (1970). Ice flow over bedrock perturbations. *Journal of Glaciology*, 9(55), 29–48. <https://doi.org/10.3189/S0022143000026770>
- Chu, W., Schroeder, D. M., Seroussi, H., Creys, T. T., & Bell, R. E. (2018). Complex basal thermal transition near the onset of Petermann Glacier, Greenland. *Journal of Geophysical Research: Earth Surface*, 123, 985–995. <https://doi.org/10.1029/2017JF004561>
- Cooper, M. A., Michaelides, K., Siegert, M. J., & Bamber, J. L. (2016). Paleofluvial landscape inheritance for Jakobshavn Isbr\ a e catchment, Greenland. *Geophysical Research Letters*, 43, 6350–6357. <https://doi.org/10.1002/2016GL069458>
- Cuffey, K. M., & Paterson, W. S. B. (2010). *The physics of glaciers*. Oxford, UK: Academic Press.

#### Acknowledgments

The authors would like to thank Matteo Spagnolo and the second anonymous reviewer for their valuable comments and suggestions, which have helped improve this paper. We would like to thank Yasmina Martos, NASA Goddard, for use of the geothermal heat flux data set prior to its publication. These data (Martos et al., 2018) and basal water predictions (Jordan et al., 2018) are archived at Pangaea at <https://doi.pangaea.de/10.1594/PANGAEA.892973> and <https://doi.pangaea.de/10.1594/PANGAEA.893097>, respectively. Additionally, we would like to thank Joe MacGregor for the use of the ratio of basal slip, presented in MacGregor et al. (2016). Michael A. Cooper was supported by the UK NERC grant NE/L002434/1 as part of the NERC Great Western Four + (GW4+) Doctoral Training Partnership, where T. M. J., M. J. S., and J. L. B. were supported by UK NERC grant NE/M000869/1 as part of the Basal Properties of Greenland project. DEMs provided by the Polar Geospatial Center under NSF OPP awards 1043681, 1559691, and 1542736, created using DigitalGlobe, Inc. imagery.

- Dahl-Jensen, D., & Gundestrup, N. (1987). Constitutive properties of ice at Dye3, Greenland. In *The physical basis of ice sheet modelling* (pp. 31–43). Wallingford, UK: IAHS Publ.
- De Rydt, J., Gudmundsson, G. H., Corr, H. F. J., & Christoffersen, P. (2013). Surface undulations of Antarctic ice streams tightly controlled by bedrock topography. *The Cryosphere*, 7(2), 407–417. <https://doi.org/10.5194/tc-7-407-2013>
- Dentith, M., & Mudge, S. T. (2014). Geophysics for the mineral exploration geoscientist by Michael Dentith. <https://doi.org/10.1017/CBO9781139024358>
- Dow, C. F., Karlsson, N. B., & Werder, M. A. (2018). Limited impact of subglacial supercooling freeze-on for Greenland ice sheet stratigraphy. *Geophysical Research Letters*, 45, 1481–1489. <https://doi.org/10.1002/2017GL076251>
- Ekholm, S., Keller, K., Bamber, J. L., & Gogineni, S. P. (1998). Unusual surface morphology from digital elevation models of the Greenland ice sheet. *Geophysical Research Letters*, 25(19), 3623–3626. <https://doi.org/10.1029/98GL02589>
- Fujita, S., Maeno, H., & Matsuoka, K. (2006). Radio-wave depolarization and scattering within ice sheets: A matrix-based model to link radar and ice-core measurements and its application. *Journal of Glaciology*, 52(178), 407–424. <https://doi.org/10.3189/172756506781828548>
- Goff, J. A., Powell, E. M., Young, D. A., & Blankenship, D. D. (2014). Conditional simulation of Thwaites Glacier (Antarctica) bed topography for flow models: Incorporating inhomogeneous statistics and channelized morphology. *Journal of Glaciology*, 60(222), 635–646. <https://doi.org/10.3189/2014JogG13J200>
- Gudmundsson, G. H. (2003). Transmission of basal variability to a glacier surface. *Journal of Geophysical Research*, 108(B5), 2253. <https://doi.org/10.1029/2002JB002107>
- Gudmundsson, G. H., & Raymond, M. (2008). On the limit to resolution and information on basal properties obtainable from surface data on ice streams. *The Cryosphere*, 2(2), 167–178. <https://doi.org/10.5194/tc-2-167-2008>
- Hargreaves, N. D. (1978). The radio-frequency birefringence of polar ice. *Journal of Glaciology*, 21(85), 301–313. <https://doi.org/10.3189/S0022143000033499>
- Herzfeld, U. C., Wallin, B. F., Leuschen, C. J., & Plummer, J. (2011). An algorithm for generalizing topography to grids while preserving subscale morphologic characteristics—Creating a glacier bed DEM for Jakobshavn trough as low-resolution input for dynamic ice-sheet models. *Computers & Geosciences*, 37(11), 1793–1801. <https://doi.org/10.1016/j.cageo.2011.02.021>
- Howat, I. M., Negrete, A., & Smith, B. E. (2014). The Greenland Ice Mapping Project (GIMP) land classification and surface elevation data sets. *The Cryosphere*, 8(4), 1509–1518. <https://doi.org/10.5194/tc-8-1509-2014>
- Huybrechts, P. (1994). The present evolution of the Greenland ice sheet: An assessment by modelling. *Global and Planetary Change*, 9(1–2), 39–51. [https://doi.org/10.1016/0921-8181\(94\)90006-X](https://doi.org/10.1016/0921-8181(94)90006-X)
- Ignéczki, Á., Sole, A. J., Livingstone, S. J., Ng, F. S. L., & Yang, K. (2018). Greenland ice sheet surface topography and drainage structure controlled by the transfer of basal variability. *Frontiers in Earth Science*, 6. <https://doi.org/10.3389/feart.2018.00101>
- Jordan, T. M., Cooper, M. A., Schroeder, D. M., Williams, C. N., Paden, J. D., Siegert, M. J., & Bamber, J. L. (2017). Self-affine subglacial roughness: Consequences for radar scattering and basal water discrimination in northern Greenland. *The Cryosphere*, 11(3), 1247–1264. <https://doi.org/10.5194/tc-11-1247-2017>
- Jordan, T. M., Williams, C. N., Schroeder, D. M., Martos, Y. M., Cooper, M. A., Siegert, M. J., et al. (2018). A constraint upon the basal water distribution and thermal state of the Greenland ice sheet from radar bed echoes. *The Cryosphere*, 12(9), 2831–2854. <https://doi.org/10.5194/tc-12-2831-2018>
- Joughin, I., B. Smith, I. Howat, & Scambos, T. (2016). *MEaSURES multi-year Greenland ice sheet velocity mosaic, Version 1*. Boulder, Colorado USA: NASA National Snow and Ice Data Center Distributed Active Archive Center.
- Joughin, I., Smith, B. E., & Howat, I. M. (2017). A complete map of Greenland ice velocity derived from satellite data collected over 20 years. *Journal of Glaciology*, 64(243), 1–11. <https://doi.org/10.1017/jog.2017.73>
- Karlsson, N. B., Dahl-Jensen, D., Gogineni, S. P., & Paden, J. D. (2013). Tracing the depth of the Holocene ice in North Greenland from radio-echo sounding data. *Annals of Glaciology*, 54(64), 44–50. <https://doi.org/10.3189/2013AoG64A057>
- Le Brocq, A. M., Hubbard, A., Bentley, M. J., & Bamber, J. L. (2008). Subglacial topography inferred from ice surface terrain analysis reveals a large un-surveyed basin below sea level in East Antarctica. *Geophysical Research Letters*, 35, L16503. <https://doi.org/10.1029/2008GL034728>
- Leysinger Vieli, G. J.-M. C., Martín, C., Hindmarsh, R. C. A., & Lüthi, M. P. (2018). Basal freeze-on generates complex ice-sheet stratigraphy. *Nature Communications*, 9(1), 4669. <https://doi.org/10.1038/s41467-018-07083-3>
- Lindbäck, K., & Pettersson, R. (2015). Spectral roughness and glacial erosion of a land-terminating section of the Greenland ice sheet. *Geomorphology*, 238, 149–159. <https://doi.org/10.1016/j.geomorph.2015.02.027>
- Livingstone, S. J., Chu, W., Ely, J. C., & Kingslake, J. (2017). Paleofluvial and subglacial channel networks beneath Humboldt Glacier, Greenland. *Geology*, 45(6), 551–554. <https://doi.org/10.1130/G38860.1>
- MacGregor, J. A., Fahnestock, M. A., Catania, G. A., Aschwanden, A., Clow, G. D., Colgan, W. T., et al. (2016). A synthesis of the basal thermal state of the Greenland ice sheet. *Journal of Geophysical Research: Earth Surface*, 121, 1328–1350. <https://doi.org/10.1002/2015JF003803>
- MacGregor, J. A., Fahnestock, M. A., Catania, G. A., Paden, J. D., Prasad Gogineni, S., Young, S. K., et al. (2015). Radiostratigraphy and age structure of the Greenland ice sheet. *Journal of Geophysical Research: Earth Surface*, 120, 212–241. <https://doi.org/10.1002/2014JF003215>
- MacGregor, J. A., Li, J., Paden, J. D., Catania, G. A., Clow, G. D., Fahnestock, M. A., et al. (2015). Radar attenuation and temperature within the Greenland ice sheet. *Journal of Geophysical Research: Earth Surface*, 120, 983–1008. <https://doi.org/10.1002/2014JF003418>
- Martos, Y. M., Jordan, T. A., Catalán, M., Jordan, T. M., Bamber, J. L., & Vaughan, D. G. (2018). Geothermal heat flux reveals the Iceland hotspot track underneath Greenland. *Geophysical Research Letters*, 45, 8214–8222. <https://doi.org/10.1029/2018GL078289>
- Matsuoka, K., Power, D., Fujita, S., & Raymond, C. F. (2012). Rapid development of anisotropic ice-crystal-alignment fabrics inferred from englacial radar polarimetry, central West Antarctica. *Journal of Geophysical Research*, 117, F03029. <https://doi.org/10.1029/2012JF002440>
- Morin, P., Porter, C., Cloutier, M., Howat, I., Noh, M.-J., Willis, M., et al. (2016). ArcticDEM; A publically available, high resolution elevation model of the Arctic (Vol. 18, pp. EPSC2016–8396). Retrieved from <http://adsabs.harvard.edu/abs/2016EGUGA..18.8396M>
- Morlighem, M., Rignot, E., Mouginot, J., Seroussi, H., & Larour, E. (2014). Deeply incised submarine glacial valleys beneath the Greenland ice sheet. *Nature Geoscience*, 7(6), 418–422. <https://doi.org/10.1038/ngeo2167>
- Morlighem, M., Williams, C. N., Rignot, E., An, L., Arndt, J. E., Bamber, J. L., et al. (2017). BedMachine v3: Complete bed topography and ocean bathymetry mapping of Greenland from multibeam echo sounding combined with mass conservation. *Geophysical Research Letters*, 44, 11,051–11,061. <https://doi.org/10.1002/2017GL074954>

- Ng, F. S. L., Ignéczi, Á., Sole, A. J., & Livingstone, S. J. (2018). Response of surface topography to basal variability along glacial flowlines. *Journal of Geophysical Research: Earth Surface*, *123*, 2319–2340. <https://doi.org/10.1029/2017JF004555>
- Oswald, G. K. A., Rezvanbehbahani, S., & Stearns, L. A. (2018). Radar evidence of ponded subglacial water in Greenland. *Journal of Glaciology*, *64*(247), 711–729. <https://doi.org/10.1017/jog.2018.60>
- Rémy, F., & Minster, J.-F. (1997). Antarctica ice sheet curvature and its relation with ice flow and boundary conditions. *Geophysical Research Letters*, *24*(9), 1039–1042. <https://doi.org/10.1029/97GL00959>
- Ridley, J. K., Cudlip, W., & Laxon, S. W. (1993). Identification of subglacial lakes using ERS-1 radar altimeter. *Journal of Glaciology*, *39*(133), 625–634. <https://doi.org/10.3189/S002214300001652X>
- Rippin, D. M. (2013). Bed roughness beneath the Greenland ice sheet. *Journal of Glaciology*, *59*(216), 724–732. <https://doi.org/10.3189/2013JoG12J212>
- Rodriguez-Morales, F., Gogineni, S., Leuschen, C. J., Paden, J. D., Li, J., Lewis, C. C., et al. (2014). Advanced multifrequency radar instrumentation for polar research. *IEEE Transactions on Geoscience and Remote Sensing*, *52*(5), 2824–2842. <https://doi.org/10.1109/TGRS.2013.2266415>
- Rose, K. C., Ross, N., Bingham, R. G., Corr, H. F. J., Ferraccioli, F., Jordan, T. A., et al. (2014). A temperate former West Antarctic ice sheet suggested by an extensive zone of subglacial meltwater channels. *Geology*, *42*(11), 971–974. <https://doi.org/10.1130/G35980.1>
- Rose, K. C., Ross, N., Jordan, T. A., Bingham, R. G., Corr, H. F. J., Ferraccioli, F., et al. (2015). Ancient pre-glacial erosion surfaces preserved beneath the West Antarctic Ice Sheet. *Earth Surface Dynamics*, *3*(1), 139–152. <https://doi.org/10.5194/esurf-3-139-2015>
- Rose, K. C., Ferraccioli, F., Jamieson, S. S. R., Bell, R. E., Corr, H., Creyts, T. T., et al. (2013). Early East Antarctic Ice Sheet growth recorded in the landscape of the Gamburtsev Subglacial Mountains. *Earth and Planetary Science Letters*, *375*, 1–12. <https://doi.org/10.1016/j.epsl.2013.03.053>
- Ross, N., Jordan, T. A., Bingham, R. G., Corr, H. F. J., Ferraccioli, F., Brocq, A. L., et al. (2014). The Ellsworth subglacial highlands: Inception and retreat of the West Antarctic Ice Sheet. *Geological Society of America Bulletin*, *126*(1–2), 3–15. <https://doi.org/10.1130/B30794.1>
- Sergienko, O. V., Creyts, T. T., & Hindmarsh, R. C. A. (2014). Similarity of organized patterns in driving and basal stresses of Antarctic and Greenland ice sheets beneath extensive areas of basal sliding. *Geophysical Research Letters*, *41*, 3925–3932. <https://doi.org/10.1002/2014GL059976>
- Siegert, M. J., & Ridley, J. K. (1998). An analysis of the ice-sheet surface and subsurface topography above the Vostok Station subglacial lake, central East Antarctica. *Journal of Geophysical Research*, *103*(B5), 10,195–10,207. <https://doi.org/10.1029/98JB00390>
- van der Veen, C. J. (2013). *Fundamentals of glacier dynamics* (2nd ed.). Boca Raton, FL: CRC Press. <https://doi.org/10.1201/b14059>
- Weertman, J. (1976). Sliding-no sliding zone effect and age determination of ice cores. *Quaternary Research*, *6*(02), 203–207. [https://doi.org/10.1016/0033-5894\(76\)90050-8](https://doi.org/10.1016/0033-5894(76)90050-8)
- Williams, C. N., Cornford, S. L., Jordan, T. M., Dowdeswell, J. A., Siegert, M. J., Clark, C. D., et al. (2017). Generating synthetic fjord bathymetry for coastal Greenland. *The Cryosphere*, *11*(1), 363–380. <https://doi.org/10.5194/tc-11-363-2017>
- Wolovick, M. J., Creyts, T. T., Buck, W. R., & Bell, R. E. (2014). Traveling slippery patches produce thickness-scale folds in ice sheets. *Geophysical Research Letters*, *41*, 8895–8901. <https://doi.org/10.1002/2014GL062248>
- Wrona, T., Wolovick, M. J., Ferraccioli, F., Corr, H., Jordan, T., & Siegert, M. J. (2017). Position and variability of complex structures in the central East Antarctic Ice Sheet. *Geological Society, London, Special Publications*, *461*(1), 113–129. <https://doi.org/10.1144/SP461.12>
- Zwally, H. J., Giovinetto, M. B., Beckley, M. A., & Saba, J. L. (2012). Antarctic and Greenland Drainage Systems, GSFC Cryospheric Sciences Laboratory. Retrieved from [http://icesat4.gsfc.nasa.gov/cryo\\_data/ant\\_grn\\_drainage\\_systems.php](http://icesat4.gsfc.nasa.gov/cryo_data/ant_grn_drainage_systems.php)