



UNIVERSITY OF LEEDS

This is a repository copy of *The effects of differential compaction on clinothem geometries and shelf-edge trajectories*.

White Rose Research Online URL for this paper:
<http://eprints.whiterose.ac.uk/150460/>

Version: Accepted Version

Article:

Beleen, D, Jackson, CA-L, Patruno, S et al. (2 more authors) (2019) The effects of differential compaction on clinothem geometries and shelf-edge trajectories. *Geology*, 47 (11). pp. 1011-1014. ISSN 0091-7613

<https://doi.org/10.1130/G46693.1>

© 2019 Geological Society of America. This is an author produced version of an article published in / accepted for publication in *Geology*. Uploaded in accordance with the publisher's self-archiving policy.

Reuse

Items deposited in White Rose Research Online are protected by copyright, with all rights reserved unless indicated otherwise. They may be downloaded and/or printed for private study, or other acts as permitted by national copyright laws. The publisher or other rights holders may allow further reproduction and re-use of the full text version. This is indicated by the licence information on the White Rose Research Online record for the item.

Takedown

If you consider content in White Rose Research Online to be in breach of UK law, please notify us by emailing eprints@whiterose.ac.uk including the URL of the record and the reason for the withdrawal request.



eprints@whiterose.ac.uk
<https://eprints.whiterose.ac.uk/>

The effects of differential compaction on clinothem geometries and shelf-edge trajectories

Daan Beelen^{1,2}, Christopher A-L. Jackson¹, Stefano Patruno³, David M. Hodgson⁴, João P. Trabucho Alexandre²

¹Imperial College, London SW7 2AZ, United Kingdom

²Universiteit Utrecht, P.O. Box 80115 3508 TC Utrecht, the Netherlands

³ION Geophysical, 31 Windsor St, Chertsey KT16 8AT, United Kingdom

⁴University of Leeds, Leeds LS2 9JT, United Kingdom

ABSTRACT

The geometry of basin margin strata documents changes in water depth, slope steepness, and sedimentary facies distributions. Their stacking patterns are widely used to define shelf-edge trajectories, which reflect long-term variations in sediment supply and relative sea level change. Here, we present a new method to reconstruct the geometries and trajectories of clinoform-bearing basin-margin successions. Our sequential decompaction technique explicitly accounts for down-dip lithology variations, which are inherent to basin-margin stratigraphy. Our case studies show that preferential compaction of distal, fine-grained foresets and bottomsets results in a vertical extension of basin margin strata and a basinward rotation of the original shelf-edge trajectory. We discuss the implications these effects have for sea level reconstructions and for predicting the timing of sediment transfer to the basin floor.

INTRODUCTION

Clinoforms are a characteristic geometry of basin margin strata (Rich, 1951). Rock units between clinoforms are called clinothems, and during progradation these strata stack laterally (and sometimes sub-vertically) to form basin margin successions (e.g. Patruno & Helland-Hansen, 2018). Clinothem geometries are widely used to infer basin depth, slope steepness and progradation rates, as well as

sedimentary facies distributions, the timing of shelf incision and sediment bypass, and for inferring past changes in climate and sea level (e.g. Patruno et al., 2015a, Patruno et al., 2015b). A key aspect of this analysis is recognition and mapping of the shelf-edge trajectory, which provides a record of the shelf-to-slope rollover position through time in a basin-margin clinothem succession. (Fig. 1). Theoretically, these trajectories are proportional to the ratio of sediment aggradation and progradation, and they can be used to infer relative changes in sediment supply and sea level (Haq et al., 1987; Helland-Hansen and Hampson, 2009). Different styles of shelf-edge trajectory have been associated with either enhanced sediment storage on shelves (rising trajectory), or with increased sediment bypass and deposition on the basin-floor (flat to falling trajectory). However, ancient basin margin successions are, or have been, buried below younger sediments, and their clinothem geometries and associated trajectories have been distorted by sediment loading and compaction, which does not recover if the succession is exhumed. To account for this, for instance when estimating paleo-water-depth by measuring clinothem heights (e.g. Haq et al., 1987, Plint et al., 2009; Patruno et al., 2015b), previous studies have decompacted the overburden overlying a succession of clinothems (e.g., Plint et al., 2009; Allen & Allen, 2013). We refer to this single-step method as “non-sequential decompaction”. Steckler et al., (1999) and Klausen & Helland-Hansen (2018) developed a more complex, multi-step method involving decompaction of each successive clinothem within the succession, from youngest to oldest. We refer to this as “sequential decompaction”. Critically, Steckler et al. (1999) used a stratigraphically and spatially uniform ‘mixed’ lithology across clinothems, whereas Klausen & Helland-Hansen (2018) used three computer processed interpretation logs to distribute lithology linearly down a clinothem. This is a key step, as porosity-depth relations for topset, foreset, and bottomset deposits from high-resolution well-log data in the Washakie Basin, USA (Carvajal & Steel, 2011), indicate that the foresets and bottomsets compact twice as much as coarser-grained topsets of the same clinothem when subjected to 3 km of burial (Carvajal & Steel, 2011, suppl. info. 1). The numerical models of Prince & Burgess (2013) develop this idea, showing that differential compaction may cause a reorientation of the shelf-edge trajectory. However, this has not been demonstrated in real-world examples of basin-margin successions comprising multiple clinothems with downdip variations in lithology.

We quantify how down-dip variations in clinothem lithology drive differential compaction, and how this modifies clinothem heights, slope gradients and trajectories in basin margin successions. We do this by applying our sequential decompaction workflow to a broad suite of basin margins, sampled by different data types, to reconstruct their pre-burial, undistorted geometries and trajectories; i.e. depth-converted seismic reflection data (Taranaki Basin, New Zealand, Anell & Midtkandal, 2017), well-log (Washakie Basin, USA, Carvajal & Steel, 2011), and outcrop datasets (van Keulenfjorden, Norway, Steel & Olsen, 2002), to reconstruct pre-burial clinothem trajectories. Finally, we discuss the implications of burial-induced geometric distortion of basin margins.

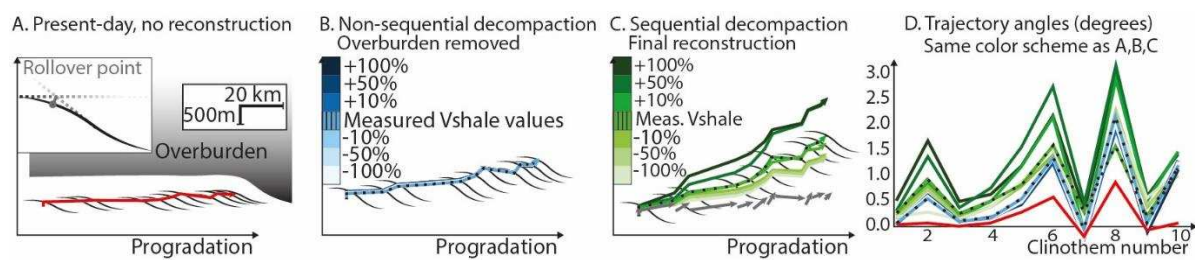


Figure 1. (A) Present shelf-edge trajectory (red) from Washakie Basin (Carvajal and Steel, 2011). Inset shows placement of the shelf-slope rollover point. (B) Non-sequentially decompacted trajectory (blue). (C) Sequentially decompacted trajectory (green), with unassembled trajectory increments shown as grey arrows. (D) Trajectory angles for each clinothem in the succession from 1 to 10. Vshale values for each topset, foreset, and bottomset compartment within each clinothem are from (Carvajal and Steel, 2012). Colour gradients in B and C correspond to varying Vshale inputs. Note: Low sensitivity in non-sequential decompaction (blue) and large sensitivity in sequential decompaction (green).

METHODS

We model clinothem rock volumes with spatial differences in sandstone and claystone by assigning Vshale values (0=clean sandstone consisting of rounded sand grains; 1=claystone consisting of plate-shaped clay grains). This is a widely used, but simplified approach to capture variable compaction behaviors of clay minerals and silt grain types (Giles et al., 1998). Here, Vshale values for proximal topsets, and more distal foresets and bottomsets, are obtained from literature, or where available, directly from well-log or outcrop data (Johannessen et al., 2011; Carvajal & Steel, 2011). A porosity/depth coefficient is then calculated for each topset, foreset, and bottomset “compartment” within every

clinothem, using the porosity/depth relations of Sclater & Christie (1980). We then backstrip (cf. Allen & Allen, 2013), decompact, and unload all material overlying the target succession ('non-sequential decompaction', Fig. 1B). This is followed by backstripping, decompaction, and unloading of each clinothem, from youngest to oldest ('sequential decompaction' Fig 1C). This two-stage approach recreates the original, unburied geometry for each clinothem. The associated trajectory position and orientation are reconstructed to their pre-burial state. To reconstruct the complete trajectory, each reconstructed trajectory increment is recorded after each sequential decompaction step and the complete trajectory is assembled by joining all increments (Fig. 1C). This accounts for the effects of continuous load-induced subsidence that vertically displaces each trajectory increment during the deposition of each consecutive clinothem.

We consider the average rate of shelf-edge clinothem deposition (ca. 1-5 mm/yr; Patruno & Helland-Hansen, 2018), which is approximately equal to, or slower than isostatic adjustments due to sediment loading (ca. 1-8 mm/yr; Ivins et al., 2007). Subsidence is expected to approach isostatic equilibrium on the spatial and temporal scales considered here. In both steps, a paleohorizontal datum, such as a coal bed or topset surface, 100 m below the base of the succession, was set as 0 m burial (Klausen & Helland-Hansen, 2018). Our shelf-slope rollover points are the same as those of the authors of the case studies used here; when these are lacking, we place the rollover point following prior definitions outlined by Beelen et al. (2017) and Klausen & Helland-Hansen (2018). To examine how lithological uncertainty impacts the calculated shelf-edge trajectory, we perform sensitivity analysis by varying V_{shale} inputs by ± 10 , 50 and 100% (Fig. 1). More methodology information is in suppl. info. (1).

RESULTS

We assess our workflow by comparing the reconstructed geometry of a buried clinothem to that of a nearby, unburied, and thus largely undeformed clinothem in the same formation (Giant Foresets Formation, Taranaki Basin, offshore New Zealand; Fig. 2). For this reconstruction, we use publicly available lithological data from nearby wells. The reconstructed (Fig. 2C) and unburied (Fig. 2D) clinothems have similar heights and slope gradients, suggesting our method accurately reconstructs the

overall geometry, internal architecture and trajectory of the now-buried clinothem as it would have been in its unburied state.

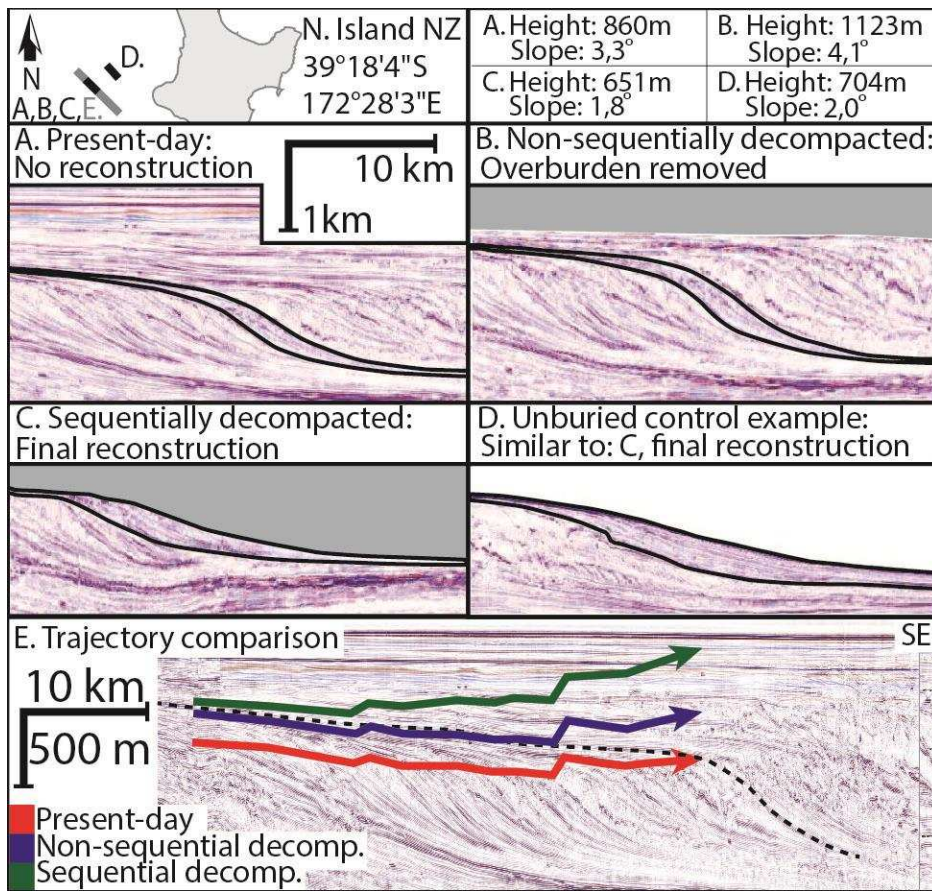


Figure 2. Buried (A) and unburied (D) clinothem geometries in the Taranaki Basin (offshore New Zealand). (A) Is located 60 km NE of (D), from the same formation. Grey infill in (B) and (C) shows backstripped area. Numbers in top-right are clinothem height and slope gradient. Non-sequential decompaction with down-dip variation in lithology (i.e., from A to B) uniformly increases the height and slope gradient, whereas the additional sequential decompaction, accounting for down-dip variation in lithology (i.e., from B to C), decreases clinothem heights and slope gradients and results in a better similarity with the unburied geometry. (D). Scale bar shown in (A) applies to B, C and D.

Clinothem geometries and their trajectory increments respond differently to the two steps of our decompaction workflow. Non-sequential decompaction (step 1) uniformly increases clinothem heights, slope gradients, and trajectory gradients (Fig. from 2B to Fig. 2A). Although additional strata are

backstripped during sequential decompaction (step 2), clinothem heights and slope gradients typically decrease rather than increase (Fig. from 2B to Fig. 2C). Overall, we show that after non-sequential and then sequential decompaction, average trajectory gradients are increased by 0.5° - 1.3° . As a result, many trajectories presently interpreted as being falling or flat may actually have been rising, prior to burial-related compaction. For example, the Giant Foresets Formation currently show an apparent falling shelf-edge trajectory (red arrow Fig. 2E); our reconstruction shows that, during deposition, a large interval of the shelf-edge trajectory was actually rising (green arrow in Fig. 2E). This interpretation of a syn-depositional rising trajectory is independently supported by the thick topset deposits, a stratigraphic architecture generally associated with rising rather than falling trajectories (Helland-Hansen & Hampson, 2009). We applied our workflow to other datasets presently defined by overall falling trajectories (i.e. Columbus Basin, Trinidad, Chen et al. 2016; Karoo Basin, South Africa, Poyatos-Moré et al., 2016). After decompaction, most increments presently defining flat or falling trajectories were reoriented to reveal rising trajectories (suppl. info. 2 and 3).

DISCUSSION

We recognize two distinct stages in the burial and compaction of clinothems: i) ‘early’, sequential compaction, which drives major differential compaction (i.e. compaction increase downdip into areas comprising finer-grained sediment); and ii) ‘late’, non-sequential compaction, which is associated with only minor differential compaction (Fig. 3). During the sequential compaction stage, a basinward-fining clinothem is buried by a younger clinothem, and clay-rich foresets and bottomsets compact more than the sandier topsets. This results in a steepening of the foreset strata and, somewhat counterintuitively, an increase in clinothem height (Fig. 3A). This vertical extension arises due to preferential compaction of the bottomsets and is, in most cases, greater than the overall compaction of the clinothem, causing a net increase in clinothem height and slope (Fig 2, from A to C). Also, topset surfaces, used to estimate paleohorizontal datums, are tilted basinward due to differential compaction. Continuous load-induced subsidence results in accommodation creation and the deposition of strata associated with net-rising trajectories, even during relative sea level fall. These effects are likely ubiquitous, since the key driver for differential compaction is the intrinsic basinward fining of clinothems (Rich, 1951). During the

'late', non-sequential compaction stage, when the clinoform-bearing succession has been deposited and is subsequently buried, the amount of differential compaction is much less than in the first, sequential compaction stage. This is because, as clinothem prograde into the basin, they stack laterally to form parallel belts of similar lithology (i.e. coarser topset, and finer foreset and bottomset compartments are roughly horizontally aligned; Fig. 3B). Additional burial then drives non-differential compaction, which decreases clinothem heights and slope gradients by evenly compressing the entire succession (Fig. 3B). The two stages of compaction also have a different effect on the shelf-edge trajectory. Sequential compaction first causes a downward rotation of the trajectory due to differential compaction (Fig. 3A). Non-sequential compaction then compresses the entire succession, thereby roughly uniformly reducing trajectory gradients, with steeper positive gradients being reduced more than shallower ones (Fig. 3B). The decline in differential compaction between the two stages of compaction can also be observed in the results of our sensitivity analyses, which indicate that the initial sequential compaction stage is sensitive to lithological inputs (i.e. large divergence in results in Fig. 1C,D, green lines). In contrast, non-sequential compaction proceeds virtually irrespective of Vshale inputs (small divergence in results; Fig. 1B, D, blue lines), despite ~10 times more material being removed in the non-sequential decompaction step. We note that how much a trajectory is reoriented after burial is not only dependent on the rate of basinward fining, but also the size and shape of the overlying clinothem. For instance, in the case of significant progradation, more material is placed on the distal part of the underlying strata, causing additional rotation. The amount of reorientation is also affected by differences in the thicknesses of the underlying topset foreset or bottomset strata, because this controls how much material is available for compaction. Clinothem associated with steeply rising trajectories will not be aligned horizontally, as younger units will be placed diagonally above older units. When this is the case, down-dip lithological changes will persist, though less prominently, as indicated by our sensitivity analyses that shows very low sensitivity to lithological inputs for a rising trajectory (Fig 1B; see also suppl. info.3). The two stages of compaction work in opposition whereby the early sequential stage causes an increase in clinothem heights and slope gradients, whereas non-sequential compaction causes a decrease (Fig 2). Deibert et al. (2003) argue the opposite, stating that differential compaction decreases the height and

slope gradient of the clinothem. We suggest the reason for this discrepancy arises because they did not include downdip changes in grain-size within their decompacted clinothems. We thus argue that the effects of lithology-induced differential compaction within clinothems, and the distinction between sequential and non-sequential compaction, are essential concepts for recognizing, reconstructing and quantifying the geometry and evolution of basin margin successions. Appreciating these effects can significantly improve our ability to accurately constrain progradation rates and depositional fluxes (e.g. Patruno et al., 2015b), paleoclimate reconstructions (e.g. Steckler et al., 1999) sea level fluctuations (e.g. Haq et al., 1987), and paleoslope gradients (e.g. Deibert et al., 2003). Finally, it is important to note that basinward tilting of the entire basin-margin succession, during and after sequential compaction, may occur in response to thermal subsidence and/or uplift of the basin margin.

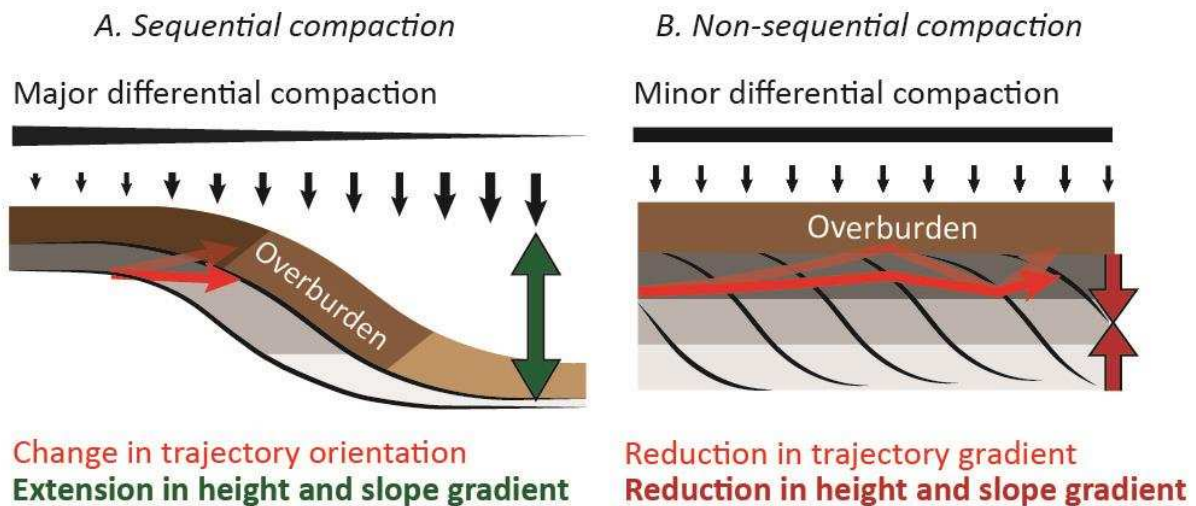


Figure 3. Impacts of (A) 'early', differential (i.e. sequential) compaction, and (B) 'late', non-differential (i.e. non-sequential) compaction on clinothem geometries and shelf-edge trajectories. Topset, foreset, and bottomset compartments indicated in gray shading. Note opposing effects with respect to clinothem height (decreases) and slope gradient (increases). In this simplified example, we assume roughly equal deposition across the surface of the buried clinothem. Following the non-sequential stage (Fig. 2B) there may be further basinward tilting of the succession due to loading with respect to a proximal hinge point and thermal subsidence.

CONCLUSIONS

We reconstruct the geometries and trajectories of basin margins successions, explicitly accounting for differential compaction due to lithological heterogeneities within clinothem rock volumes and isostatic loading due to the weight of the clinothems. We show that clinothem heights and slope gradients measured from buried successions are significantly different to their original, pre-burial depositional geometries. Potentially major reorientations of the original basin margin trajectory can occur, causing the present trajectory to differ from the ratio between aggradation and progradation. Rising trajectories can be reoriented to appear as a falling trajectory, a key notion relevant for improving our ability to reconstruct relative and eustatic sea level. Burial-related geometric distortion of clinothems and trajectories occurs in two distinct stages: sequential then non-sequential. Each stage has a roughly opposite net-effect to the height and slope gradient of the clinothem. These results are relevant to many important factors associated with basin margin analysis like progradation rates and depositional fluxes, paleoclimate reconstructions, sea level fluctuations and paleoslope gradients.

REFERENCES

- Allen, P. A., and Allen, J. R., 2013, Basin analysis: Principles and application to petroleum play assessment, New York, John Wiley & Sons.
- Anell, I., and Midtkandal, I., 2017, The quantifiable clinothem–types, shapes and geometric relationships in the Plio-Pleistocene Giant Foresets Formation, Taranaki Basin, New Zealand: Basin Research, v. 29, p. 277-297.
- Beelen, D., 2017. The effect of differential compaction on shelf-edge trajectories (Master's thesis).
- Carvajal, C., and Steel, R., 2011, Source-to-sink sediment volumes within a tectono-stratigraphic model for a Laramide shelf-to-deep-water basin: methods and results: Tectonics of Sedimentary Basins: Recent Advances, p. 131-151.
- Chen, S., Steel, R.J. and Olariu, C., 2016, Upper-slope to shelf-edge delta architecture, Miocene Cruse Formation, Orinoco shelf margin, Trinidad: Journal of Sedimentary Research, v. 86.1, p. 87-106.

- Deibert, J.E., Benda, T., Løseth, T., Schellpeper, M. and Steel, R.J., 2003, Eocene clinoform growth in front of a storm-wave-dominated shelf, Central Basin, Spitsbergen: no significant sand delivery to deepwater areas: *Journal of Sedimentary Research*, v. 73.4, p. 546-558.
- Giles, M.R., Indrelid, S.L. and James, D.M.D., 1998. Compaction—the great unknown in basin modelling: Geological Society, London, Special Publications, v. 141.1, p. 15-43.
- Haq, B.U., Hardenbol, J.A.N. and Vail, P.R., 1987. Chronology of fluctuating sea levels since the Triassic: *Science*, v. 235.4793, p. 1156-1167.
- Helland-Hansen, W., and Hampson, G., 2009, Trajectory analysis: concepts and applications: *Basin Research*, v. 21.5, p. 454-483.
- Ivins, E.R., Dokka, R.K. and Blom, R.G., 2007, Post-glacial sediment load and subsidence in coastal Louisiana: *Geophysical Research Letters*, v. 34.16.
- Johannessen, E.P., Henningsen, T., Bakke, N.E., Johansen, T.A., Ruud, B.O., Riste, P., Elvebakk, H., Jochmann, M., Elvebakk, G., and Woldengen, M.S., 2011, Palaeogene clinothem succession on Svalbard expressed in outcrops, seismic data, logs and cores: *First Break*, v. 29.2, p. 35-44.
- Klausen, T.G. and Helland-Hansen, W., 2018, Methods For Restoring and Describing Ancient Clinoform Surfaces: *Journal of Sedimentary Research*, v. 88.2, p. 241-259.
- Patruno, S., Hampson, G. J., Jackson, C. A. L., & Whipp, P. S., 2015a. Quantitative progradation dynamics and stratigraphic architecture of ancient shallow-marine clinoform sets: a new method and its application to the Upper Jurassic Sognefjord Formation, Troll Field, offshore Norway: *Basin Research*, v. 27.4, p. 412-452.
- Patruno, S., Hampson, G.J., and Jackson, C.A., 2015b, Quantitative characterisation of deltaic and subaqueous clinothems: *Earth-Science Reviews*, v. 142, p. 79-119.
- Patruno, S., Helland-Hansen, W., 2018. Clinoform systems: Review and dynamic classification scheme for shorelines, subaqueous deltas, shelf edges and continental margins: *Earth-Science Reviews*, v. 185, p. 202-233.
- Plint, A. G., Tyagi, A., Hay, M. J., Varban, B. L., Zhang, H., and Roca, X., 2009, Clinothems, paleobathymetry, and mud dispersal across the Western Canada Cretaceous foreland basin:

- evidence from the Cenomanian Dunvegan Formation and contiguous strata: *Journal of Sedimentary Research*, v. 79.3, p. 144-161.
- Prince, G.D., and Burgess, P.M., 2013, Numerical modeling of falling-stage topset aggradation: implications for distinguishing between forced and unforced regressions in the geological record: *Journal of Sedimentary Research*, v. 83.9, p. 767-781.
- Poyatos-Moré, M., Jones, G.D., Brunt, R.L., Hodgson, D.M., Wild, R.J. and Flint, S.S., 2016, Mud-dominated basin-margin progradation: processes and implications: *Journal of Sedimentary Research*, v. 86.8, p. 863-878.
- Rich, J.L., 1951. Three critical environments of deposition, and criteria for recognition of rocks deposited in each of them. *Geological Society of America Bulletin*, 62(1), pp.1-20.
- Sclater, J. G., and Christie, P., 1980, Continental stretching; an explanation of the post-Mid-Cretaceous subsidence of the central North Sea basin: *Journal of Geophysical Research*, v. 85.B7, p. 3711-3739.
- Steckler, M. S., Mountain, G. S., Miller, K. G., and Christie-Blick, N., 1999, Reconstruction of Tertiary progradation and clinothem development on the New Jersey passive margin by 2-D backstripping: *Marine Geology*, v. 154.1-4, p. 399-420.
- Steel, R., and Olsen, T., 2002, Clinothems, clinothem trajectories and deepwater sands, in *Proceedings Sequence-stratigraphic models for exploration and production: Evolving methodology, emerging models and application histories: Gulf Coast Section SEPM 22nd Research Conference*, Houston, Texas, p. 367-381.