



UNIVERSITY OF LEEDS

This is a repository copy of *The use of polymeric meshes for Pelvic Organ Prolapse: current concepts, challenges and future perspectives*.

White Rose Research Online URL for this paper:  
<http://eprints.whiterose.ac.uk/147644/>

Version: Accepted Version

---

**Article:**

Mancuso, E [orcid.org/0000-0003-1742-1656](https://orcid.org/0000-0003-1742-1656), Downey, C [orcid.org/0000-0001-9818-8002](https://orcid.org/0000-0001-9818-8002), Doxford-Hook, E et al. (2 more authors) (2020) The use of polymeric meshes for Pelvic Organ Prolapse: current concepts, challenges and future perspectives. *Journal of Biomedical Materials Research - Part B Applied Biomaterials*, 108 (3). pp. 771-789. ISSN 1552-4973

<https://doi.org/10.1002/jbm.b.34432>

---

© 2019 Wiley Periodicals, Inc. This is the peer reviewed version of the following article: Mancuso, E , Downey, C , Doxford-Hook, E et al. (2019) The use of polymeric meshes for Pelvic Organ Prolapse: current concepts, challenges and future perspectives. *Journal of Biomedical Materials Research - Part B Applied Biomaterials*. ISSN 1552-4973, which has been published in final form at <https://doi.org/10.1002/jbm.b.34432>. This article may be used for non-commercial purposes in accordance with Wiley Terms and Conditions for Use of Self-Archived Versions.

**Reuse**

Items deposited in White Rose Research Online are protected by copyright, with all rights reserved unless indicated otherwise. They may be downloaded and/or printed for private study, or other acts as permitted by national copyright laws. The publisher or other rights holders may allow further reproduction and re-use of the full text version. This is indicated by the licence information on the White Rose Research Online record for the item.

**Takedown**

If you consider content in White Rose Research Online to be in breach of UK law, please notify us by emailing [eprints@whiterose.ac.uk](mailto:eprints@whiterose.ac.uk) including the URL of the record and the reason for the withdrawal request.



[eprints@whiterose.ac.uk](mailto:eprints@whiterose.ac.uk)  
<https://eprints.whiterose.ac.uk/>

## List of Figures

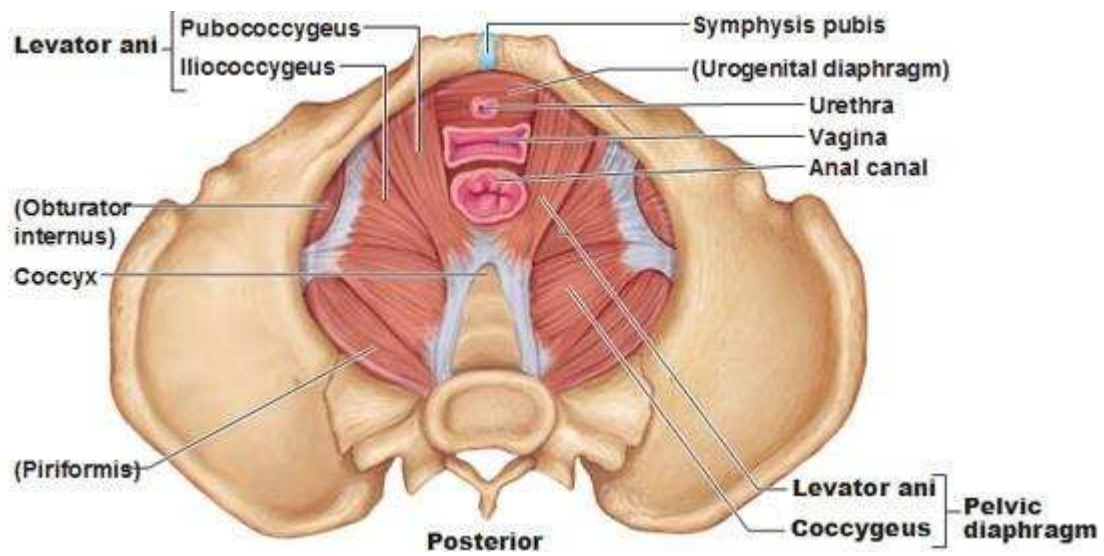


Figure 1: Anatomy of pelvic floor. Source:

<https://pittsburghpelvichealth.wordpress.com/the-basics/>

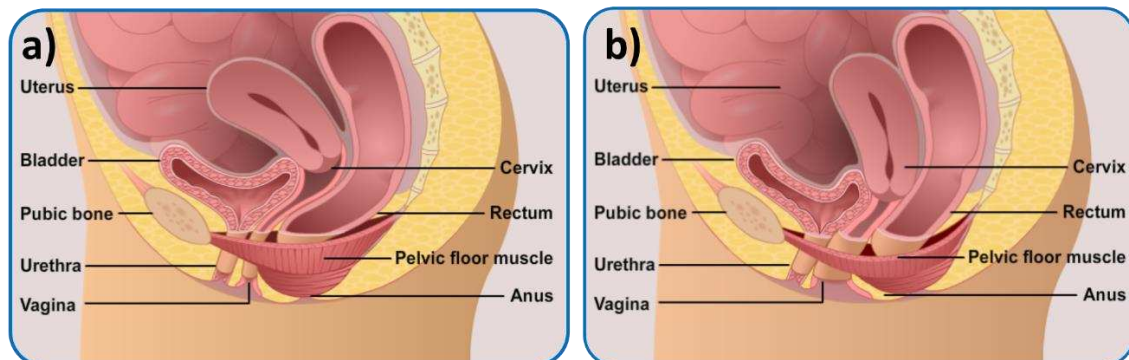
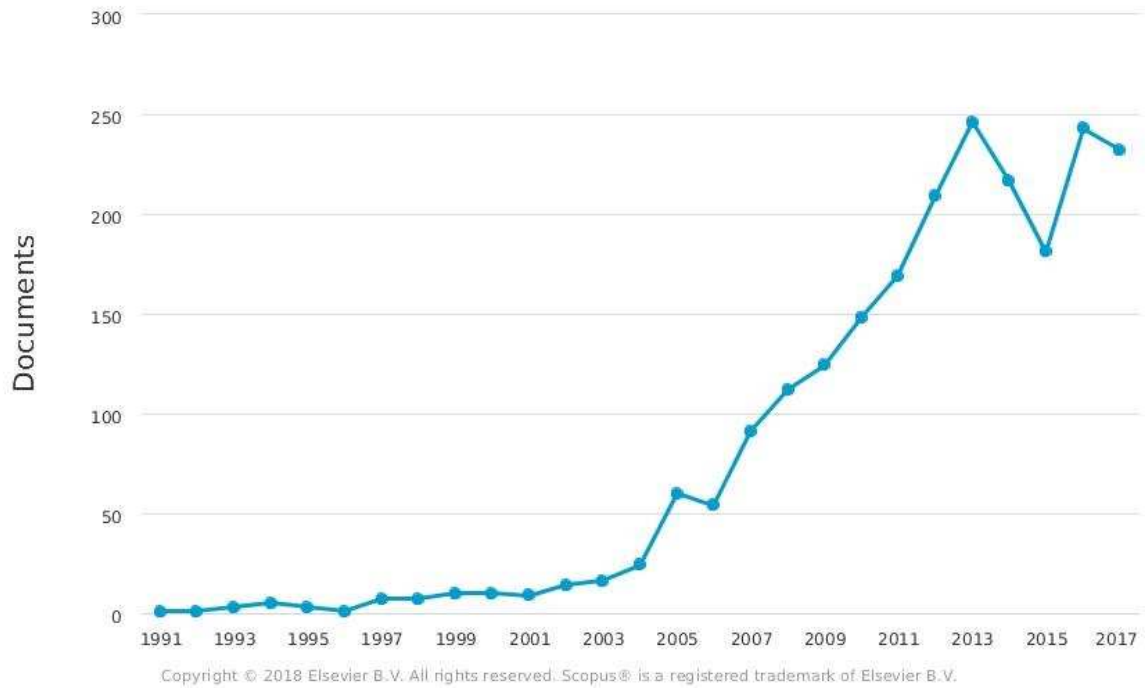
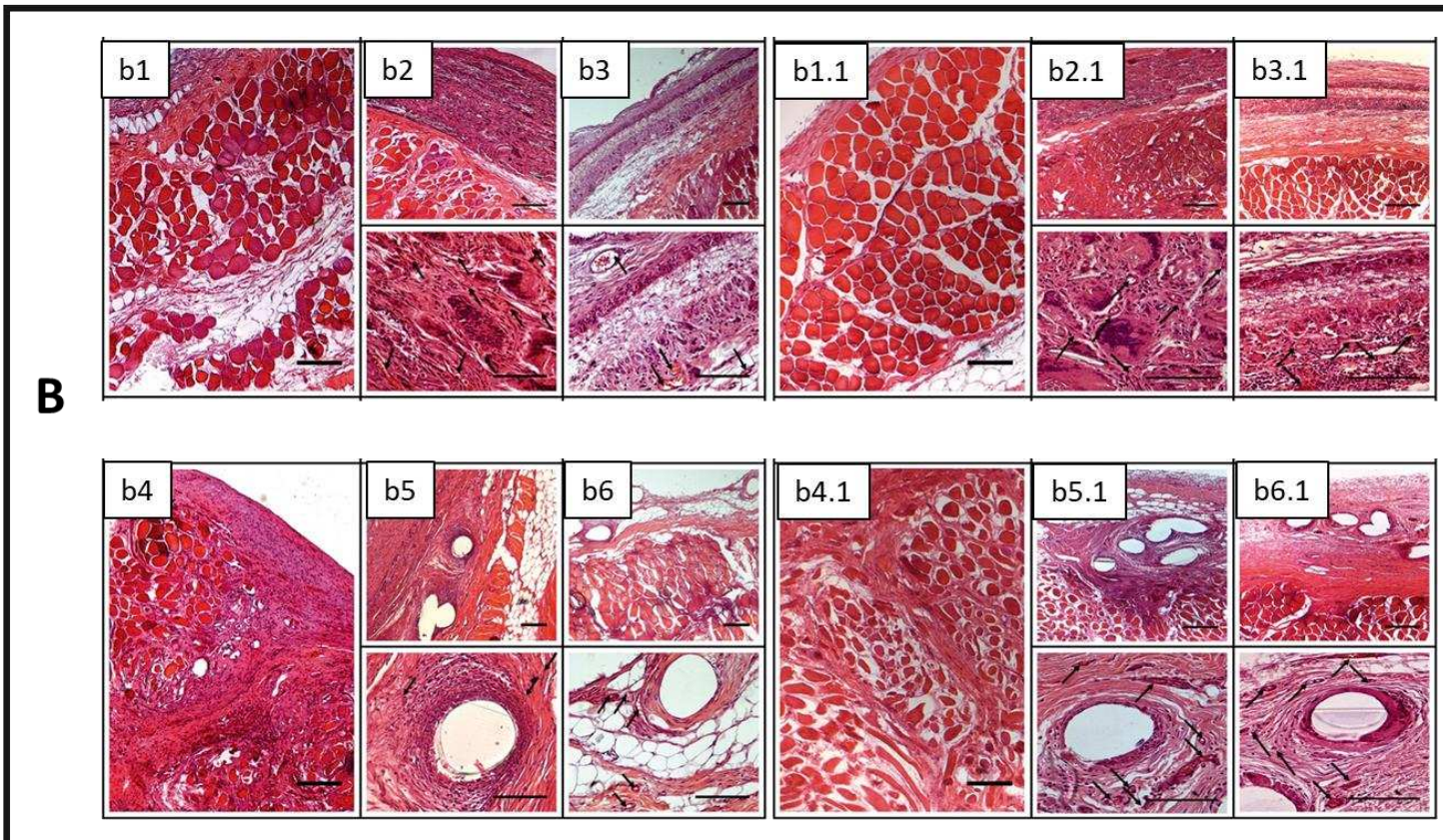
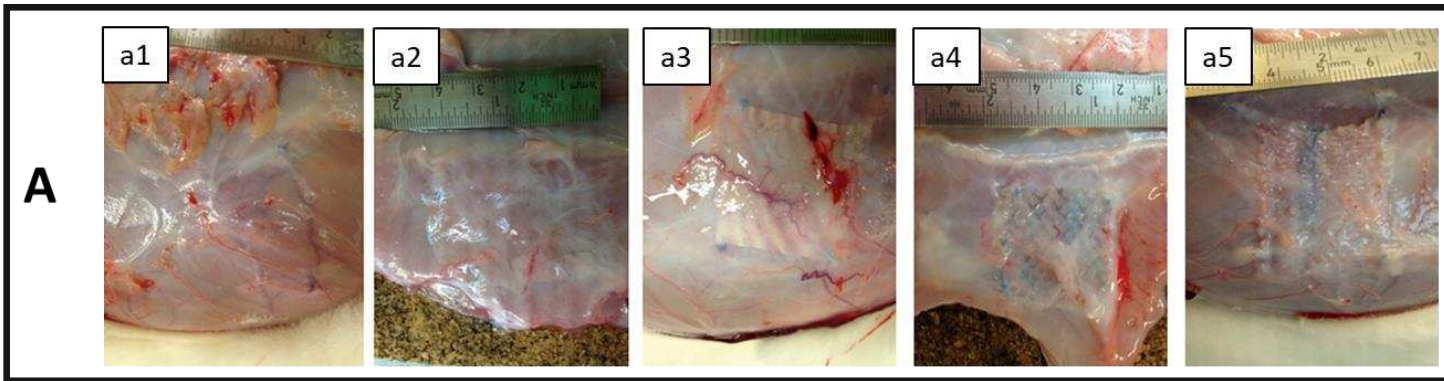


Figure 2: a) Normal pelvic support and b) weakened pelvic support. Source American Urogynecologic Society (<https://www.augs.org/>).



**Figure 3: Number of publications indexed in Scopus between 1991 until 2017 for search topic keywords “mesh, pelvic, organ, prolapse”.**



**Figure 4: A) Macroscopic appearance of a1)sham control, a2) PLA, a3) PU, a4) PVDF and a5) PP 90 days after implantation. B) Hematoxylin and eosin staining. b1 and b1.1, healthy abdominal wall; b2 and b2.2., PLA; b3 and b3.1, PU; b4 and b4.1, sham control; b5 and b5.1, PVDF; b6 and b6.1 PP. After 30 days (b1 to b6) and 90 days (b1.1 to b6.1) of implantation. By 90 days of implantation PLA and PU meshes integrated well into host tissue, where more blood vessels were found. In contrast, the commercial PPL and PVDF meshes showed evidence of sustained inflammation (M1 response) with excessive fibrotic tissue formation around the mesh filaments. Figure adapted from [115].**