



UNIVERSITY OF LEEDS

This is a repository copy of *First high-resolution multi-proxy palaeoenvironmental record of the Late Glacial to Early Holocene transition in the Ría de Arousa (Atlantic margin of NW Iberia)*.

White Rose Research Online URL for this paper:  
<http://eprints.whiterose.ac.uk/147070/>

Version: Published Version

---

**Article:**

García-Moreiras, I, Cartelle, V [orcid.org/0000-0002-8894-7172](https://orcid.org/0000-0002-8894-7172), García-Gil, S et al. (1 more author) (2019) First high-resolution multi-proxy palaeoenvironmental record of the Late Glacial to Early Holocene transition in the Ría de Arousa (Atlantic margin of NW Iberia). *Quaternary Science Reviews*, 215. pp. 308-321. ISSN 0277-3791

<https://doi.org/10.1016/j.quascirev.2019.05.016>

---

© 2019, Elsevier Ltd. This manuscript version is made available under the CC-BY-NC-ND 4.0 license <http://creativecommons.org/licenses/by-nc-nd/4.0/>.

**Reuse**

This article is distributed under the terms of the Creative Commons Attribution-NonCommercial-NoDerivs (CC BY-NC-ND) licence. This licence only allows you to download this work and share it with others as long as you credit the authors, but you can't change the article in any way or use it commercially. More information and the full terms of the licence here: <https://creativecommons.org/licenses/>

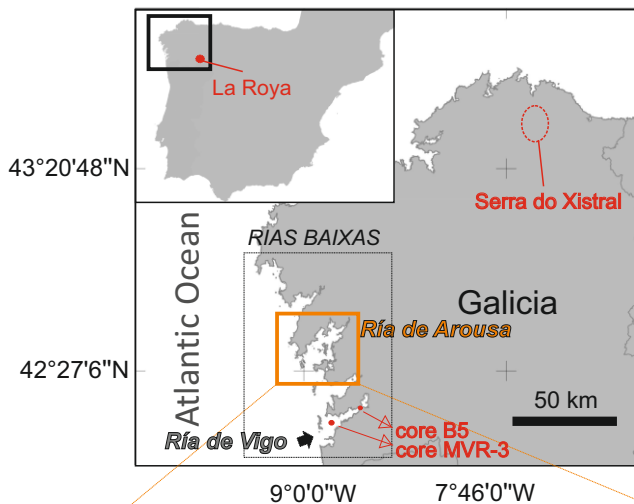
**Takedown**

If you consider content in White Rose Research Online to be in breach of UK law, please notify us by emailing [eprints@whiterose.ac.uk](mailto:eprints@whiterose.ac.uk) including the URL of the record and the reason for the withdrawal request.



[eprints@whiterose.ac.uk](mailto:eprints@whiterose.ac.uk)  
<https://eprints.whiterose.ac.uk/>

a) NW of the Iberian Peninsula



b) Ría de Arousa basin

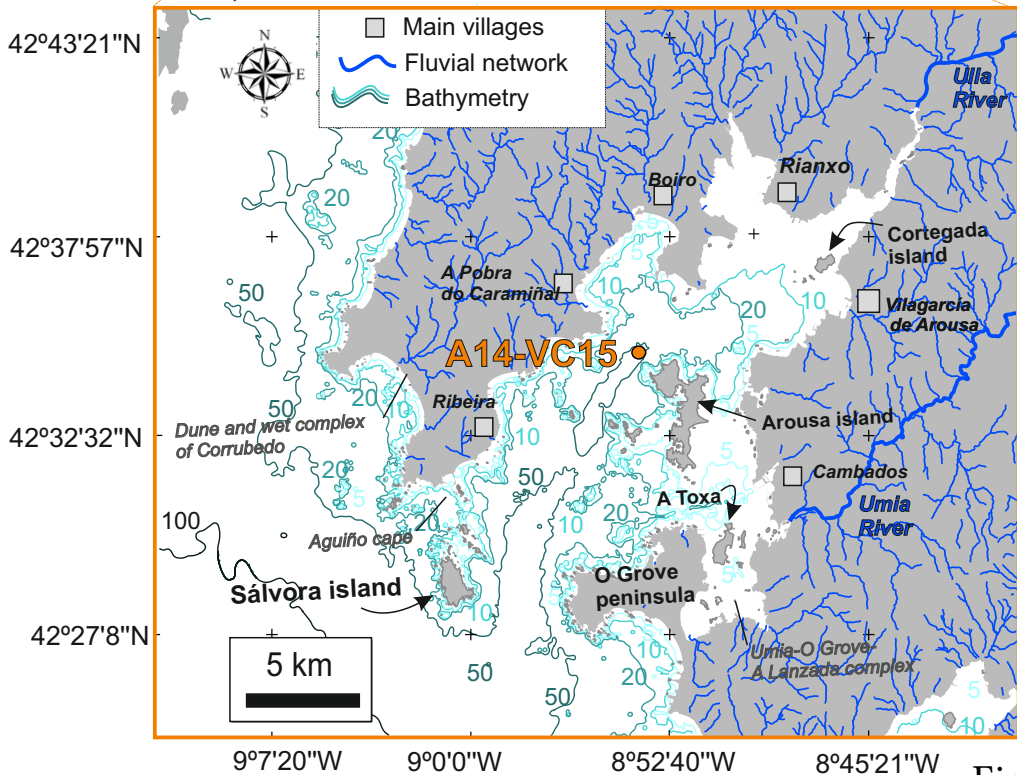


Fig. 1

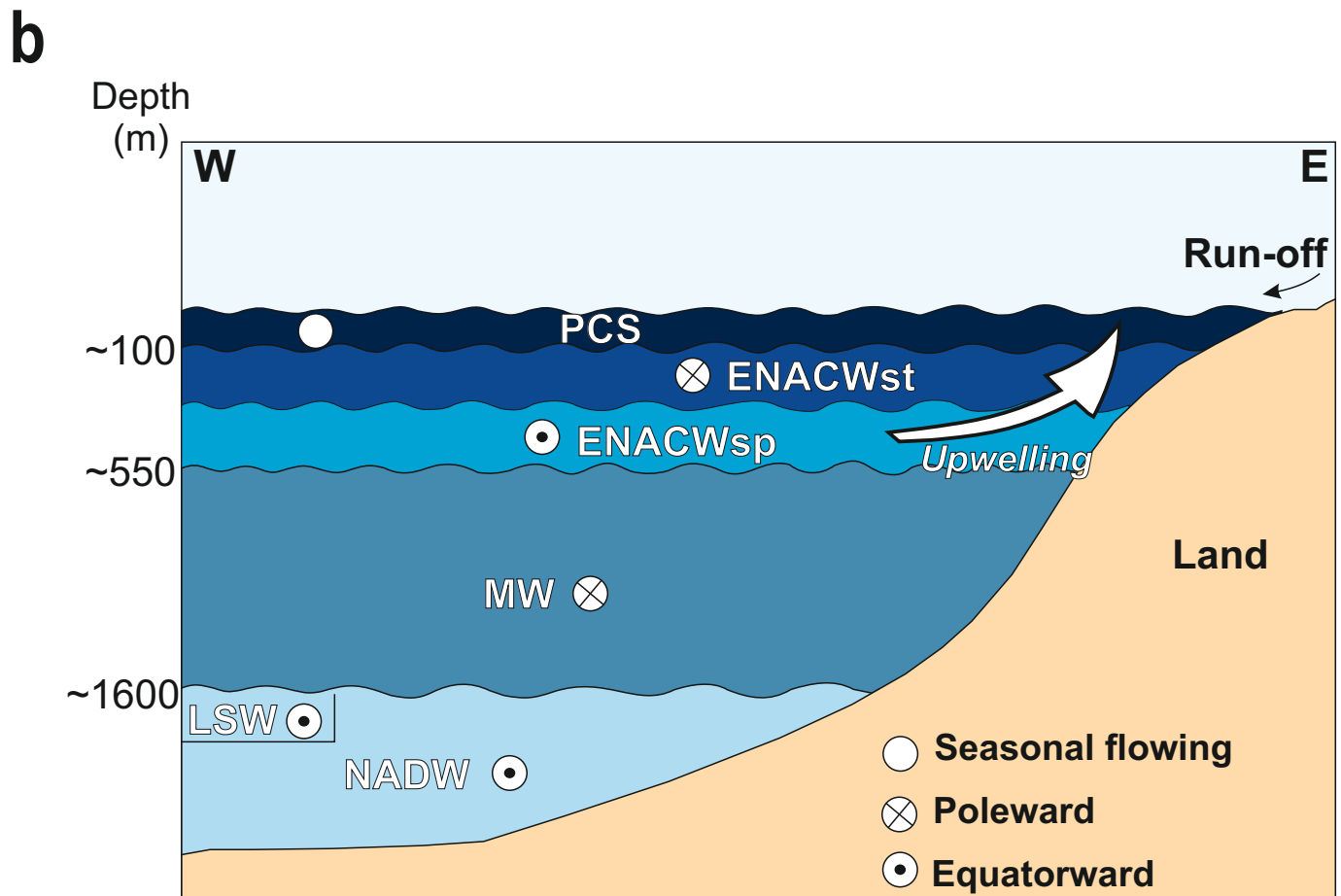
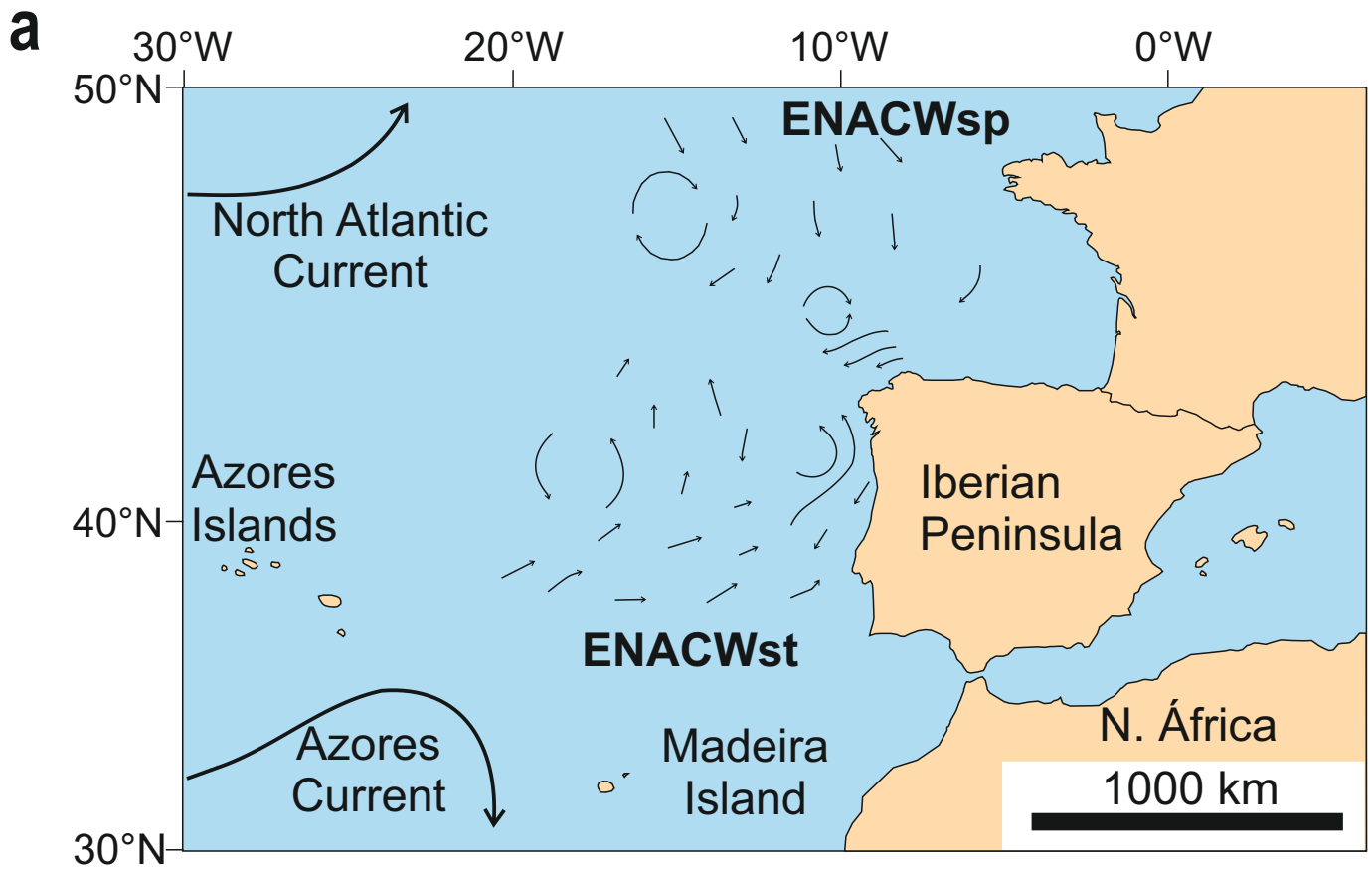


Fig. 2

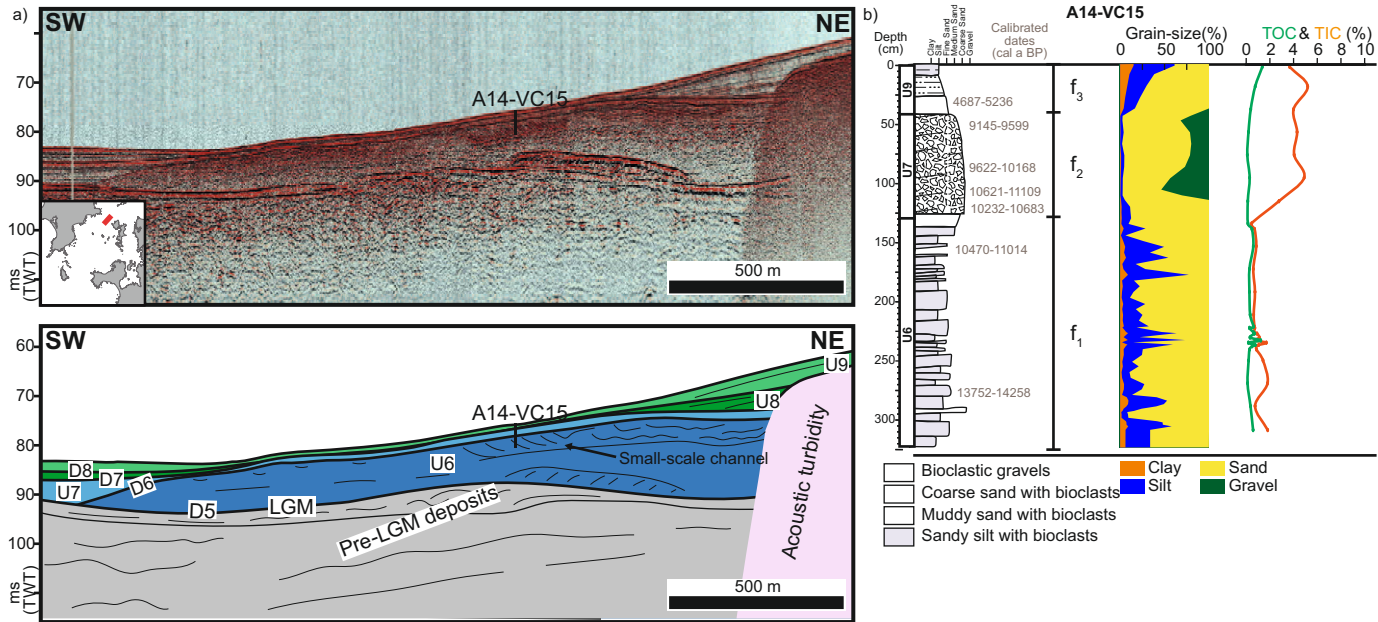


Fig. 3

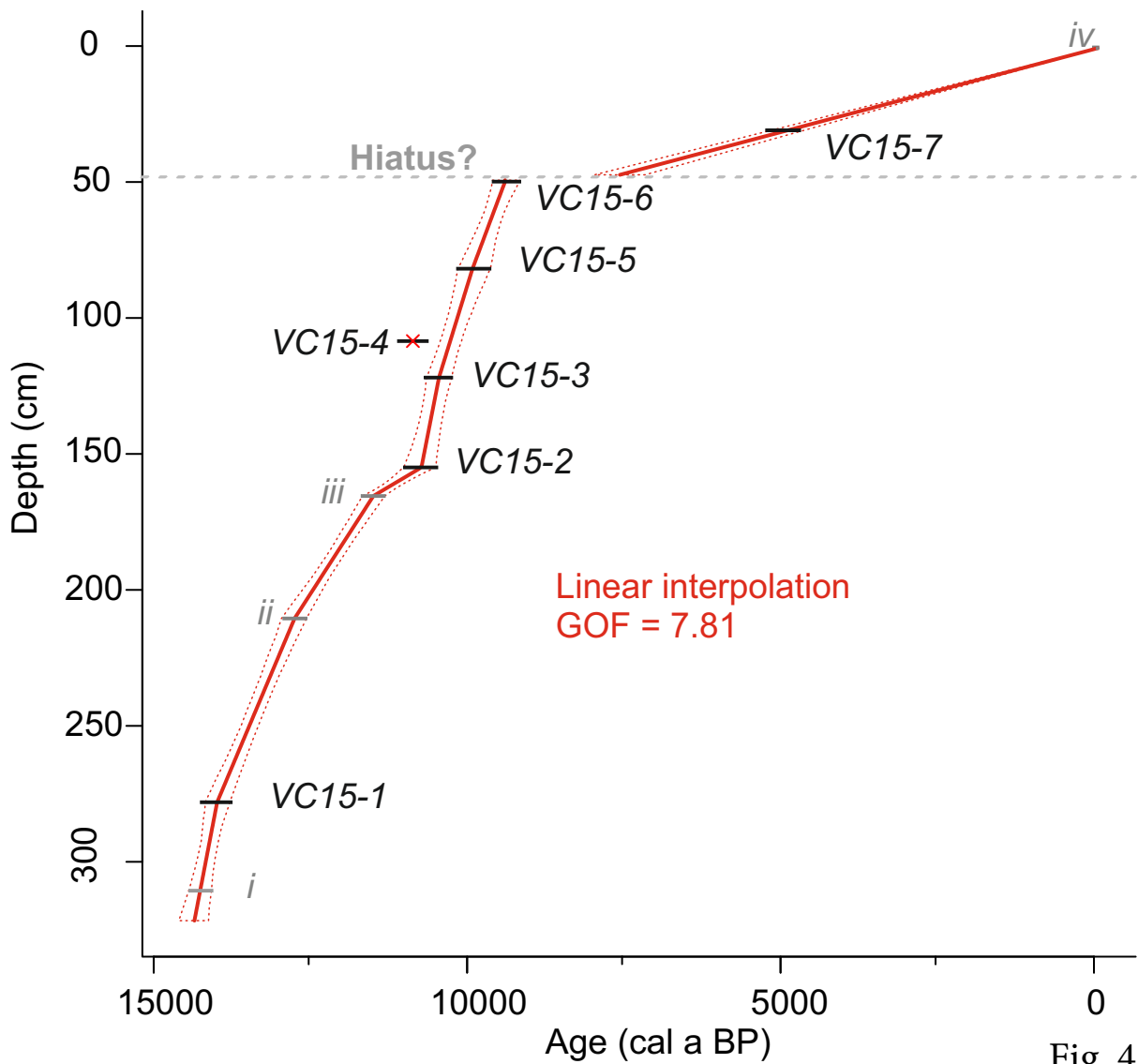


Fig. 4

Accumulation rates ( $\times 10 \text{ grains} \cdot \text{cm}^{-2} \cdot \text{a}^{-1}$ )

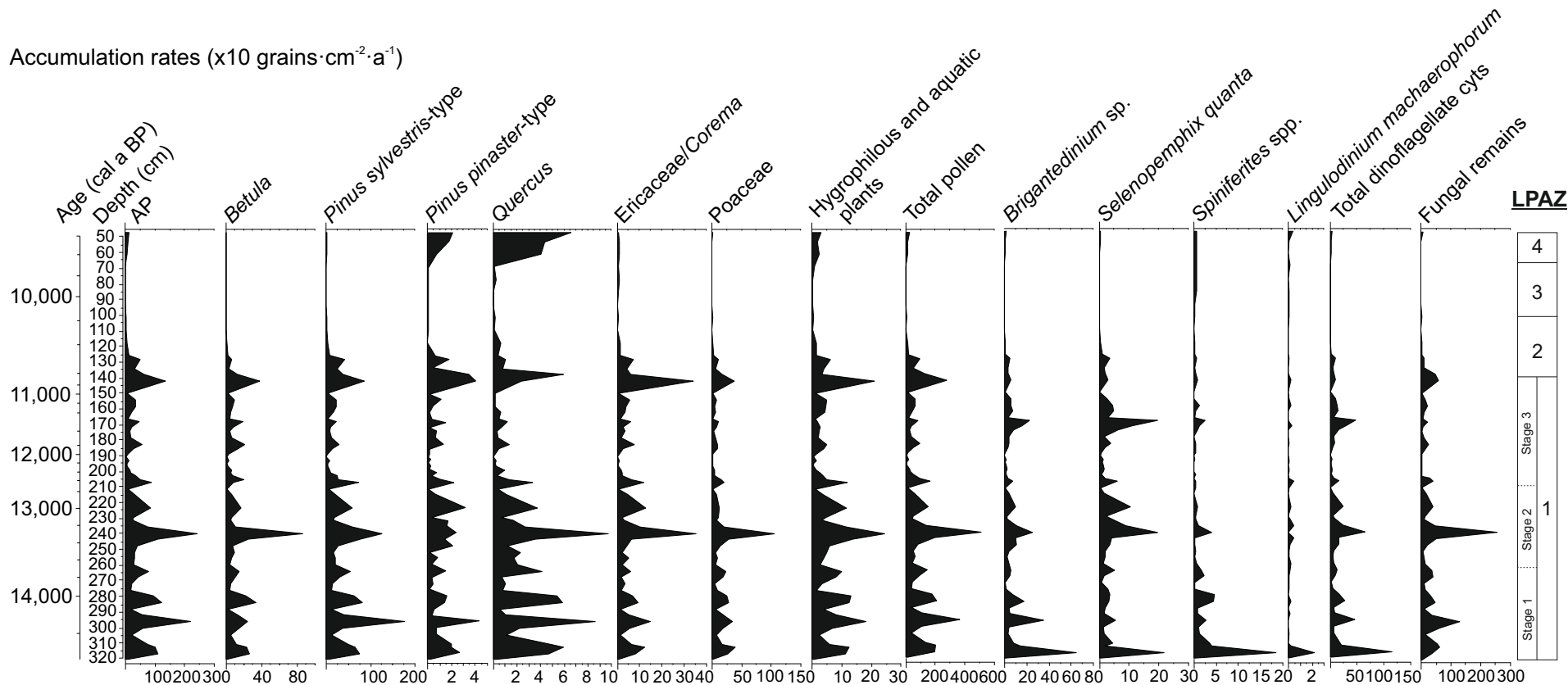


Fig. 5

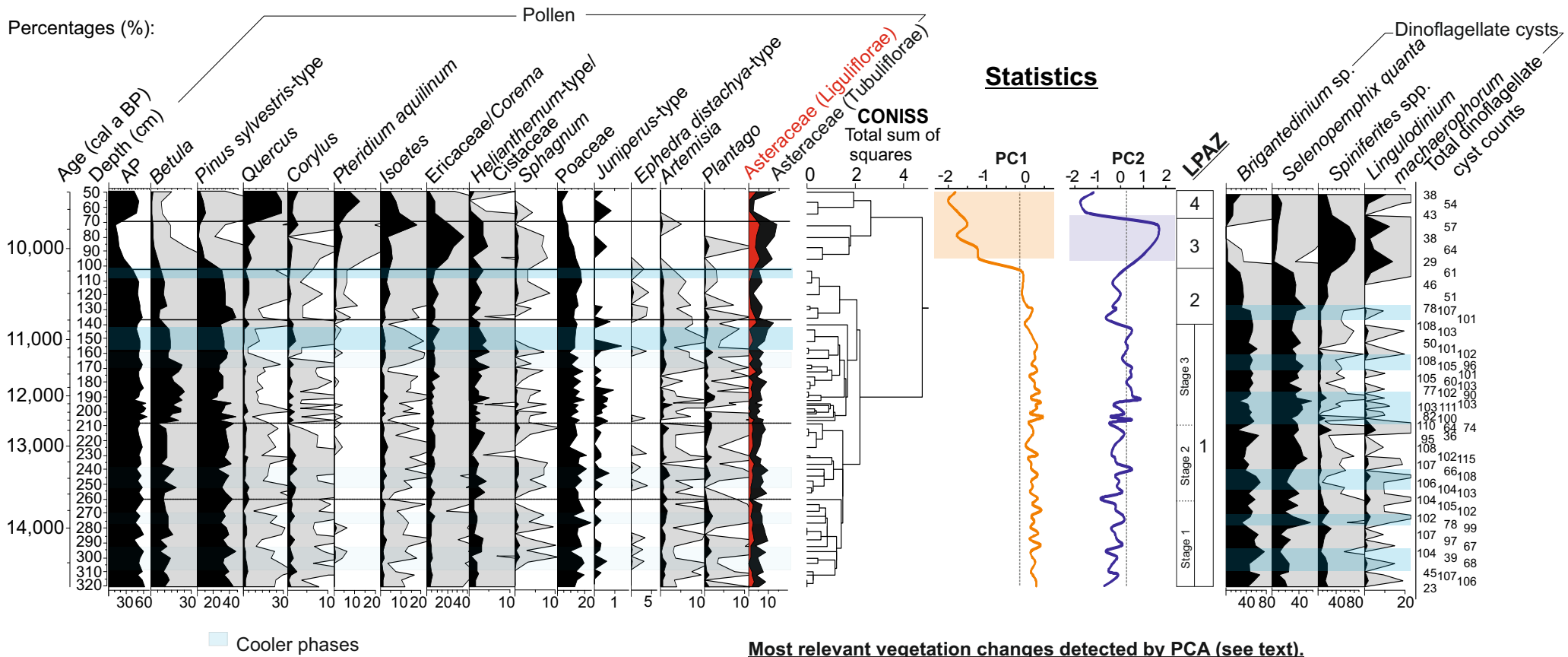


Fig. 6

a) A14-VC15 palaeoenvironmental record from Ria de Arousa (NW Iberia)

b) Regional biostratigraphy

c) Reconstructed temperatures

d) Ice-core  $^{18}\text{O}$  record

e) Climatic phases (INTIMATE)

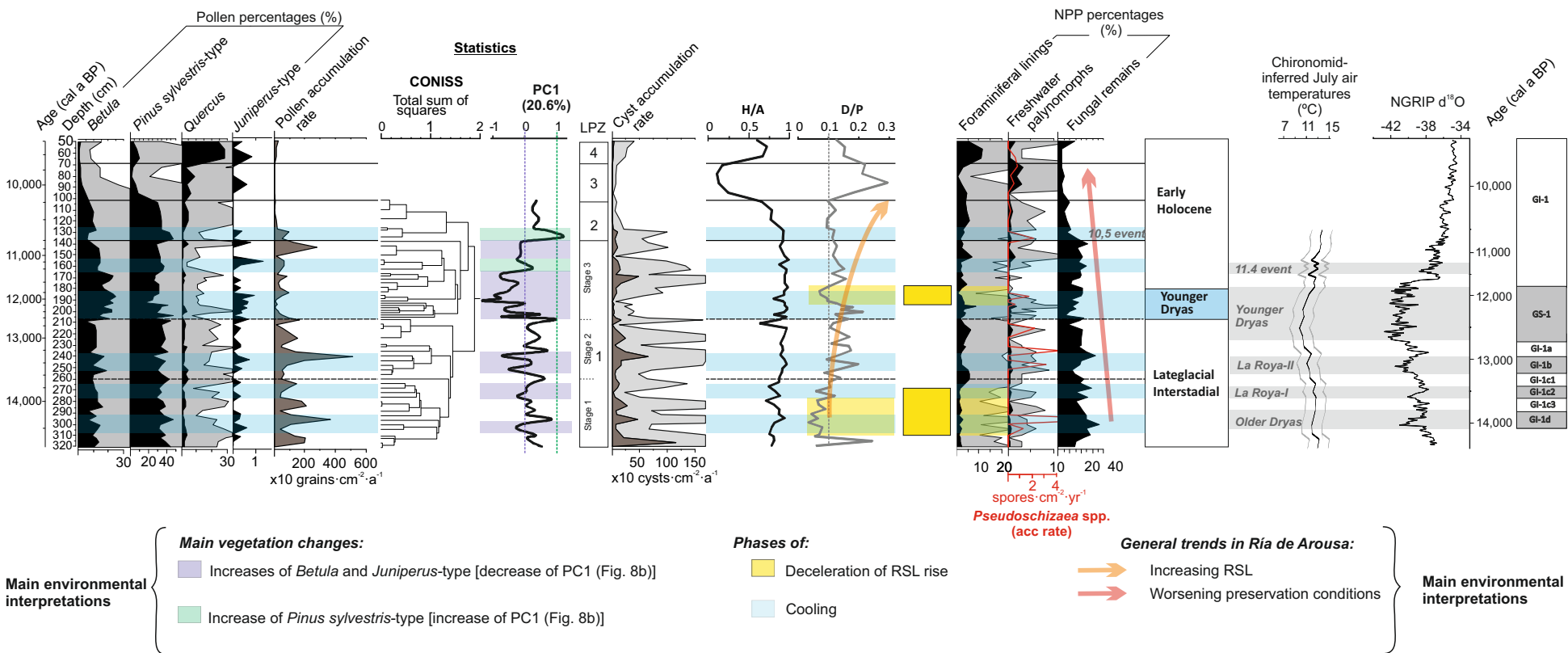
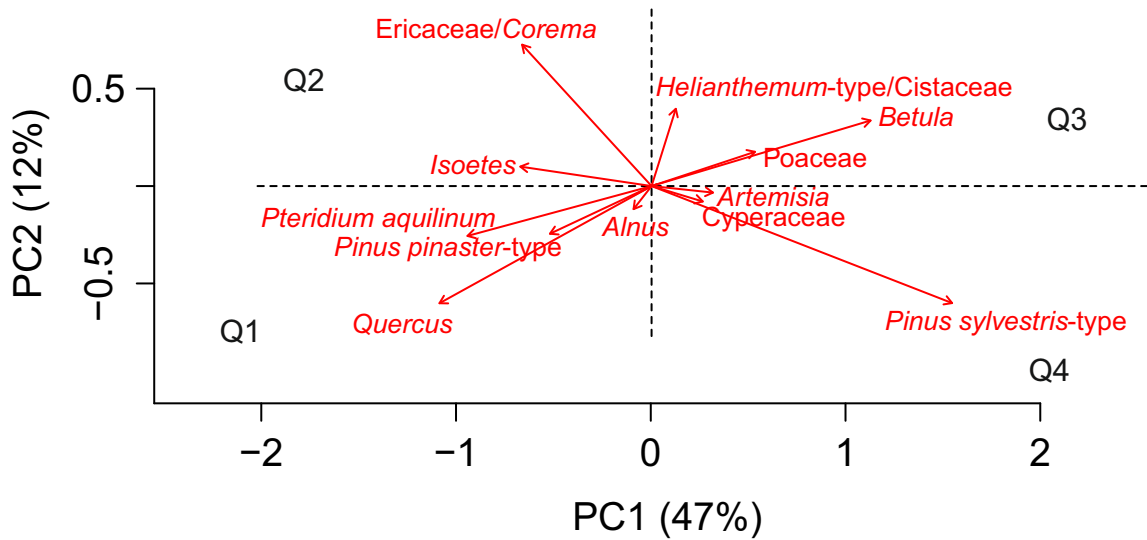


Fig. 7



a) Taxa ordination according to the PCA performed on the entire A14-VC15 pollen record (322-50 cm):



b) Taxa ordination according to the PCA performed on the bottom section of A14-VC15 pollen record (322-100 cm):

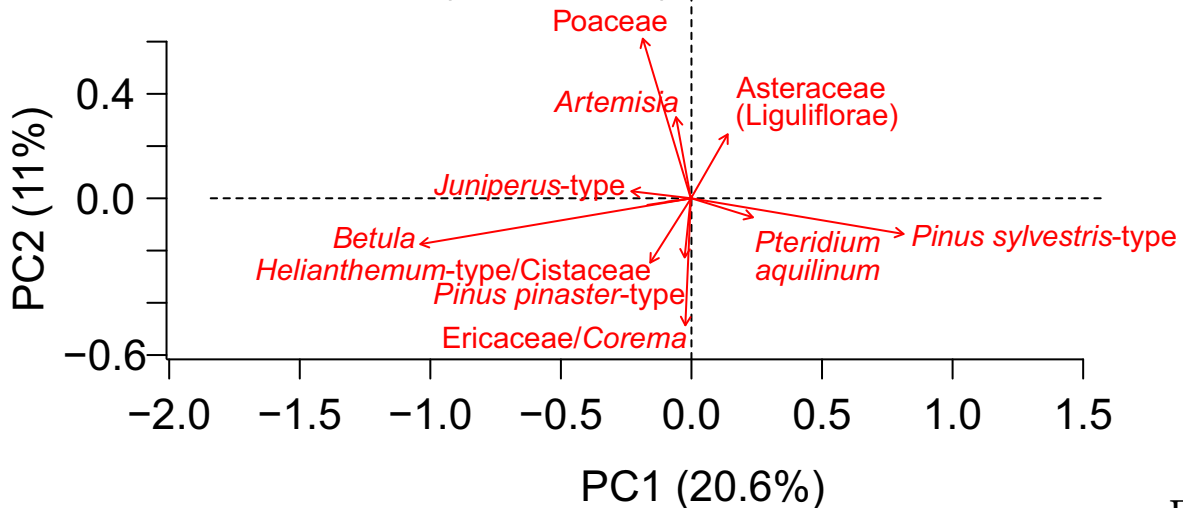


Fig. 8

Ría de Vigo LPAZ 

4	5a	5b	5c	6
---	----	----	----	---

Ría de Arousa LPAZ 

1	2	3	4
---	---	---	---

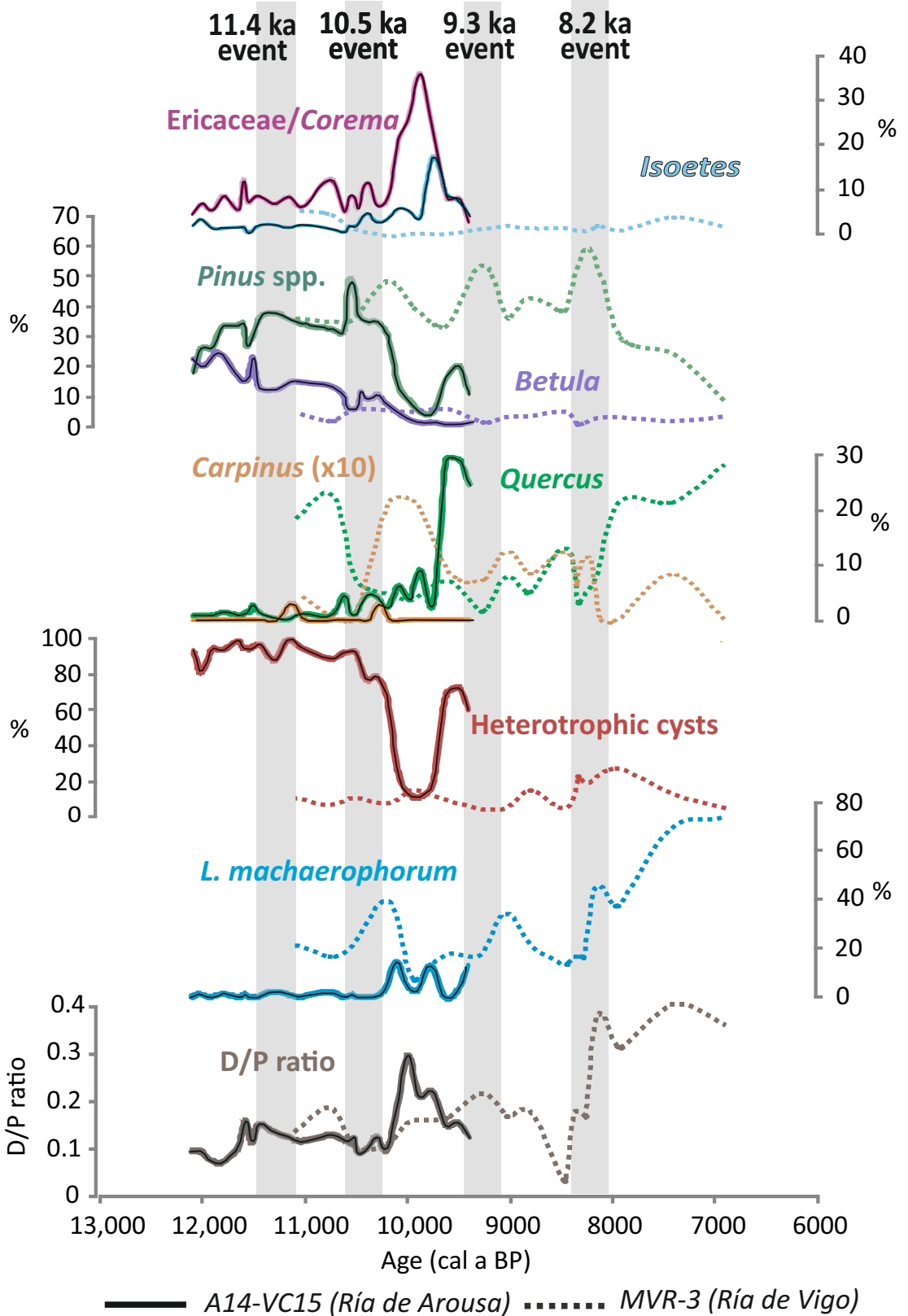
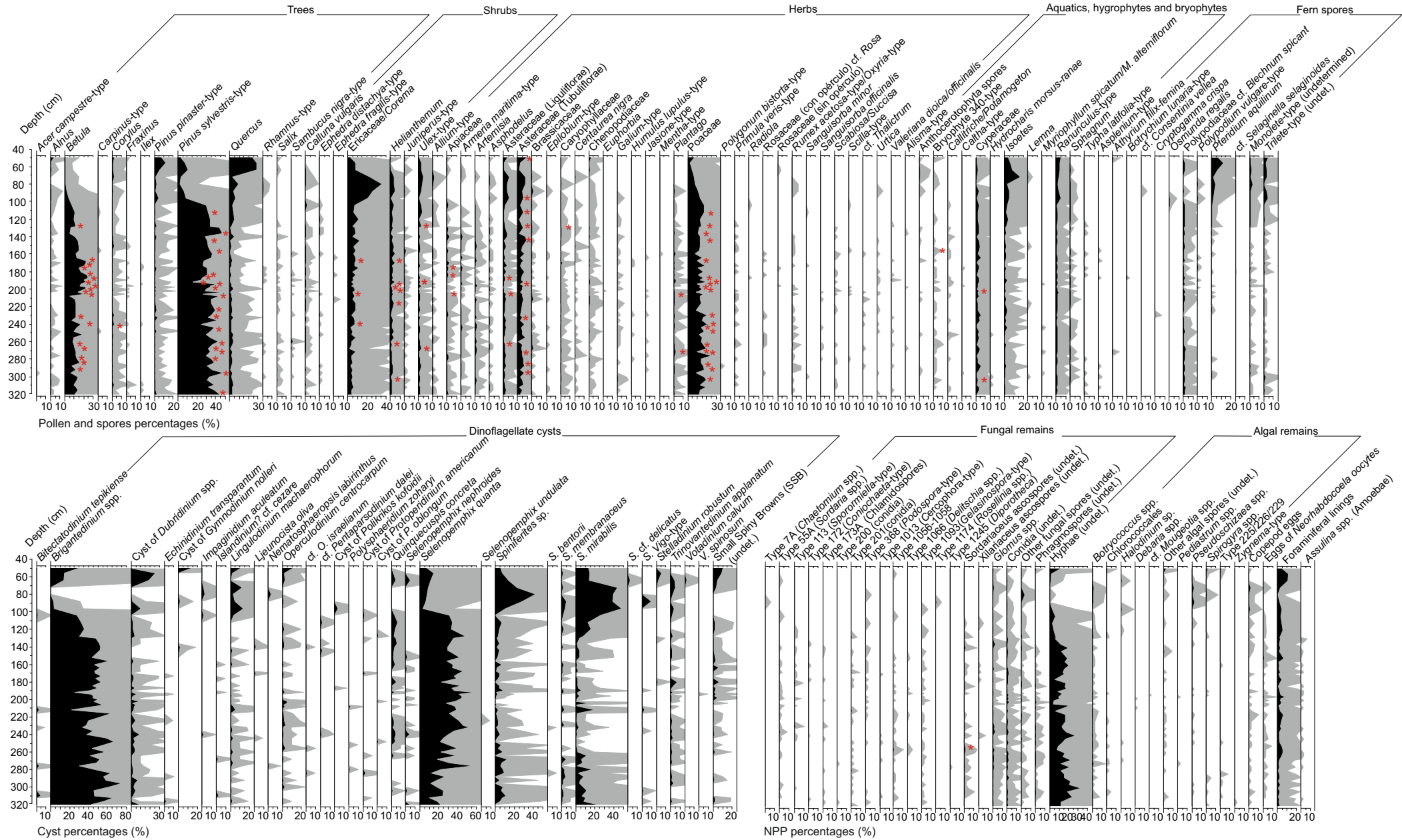
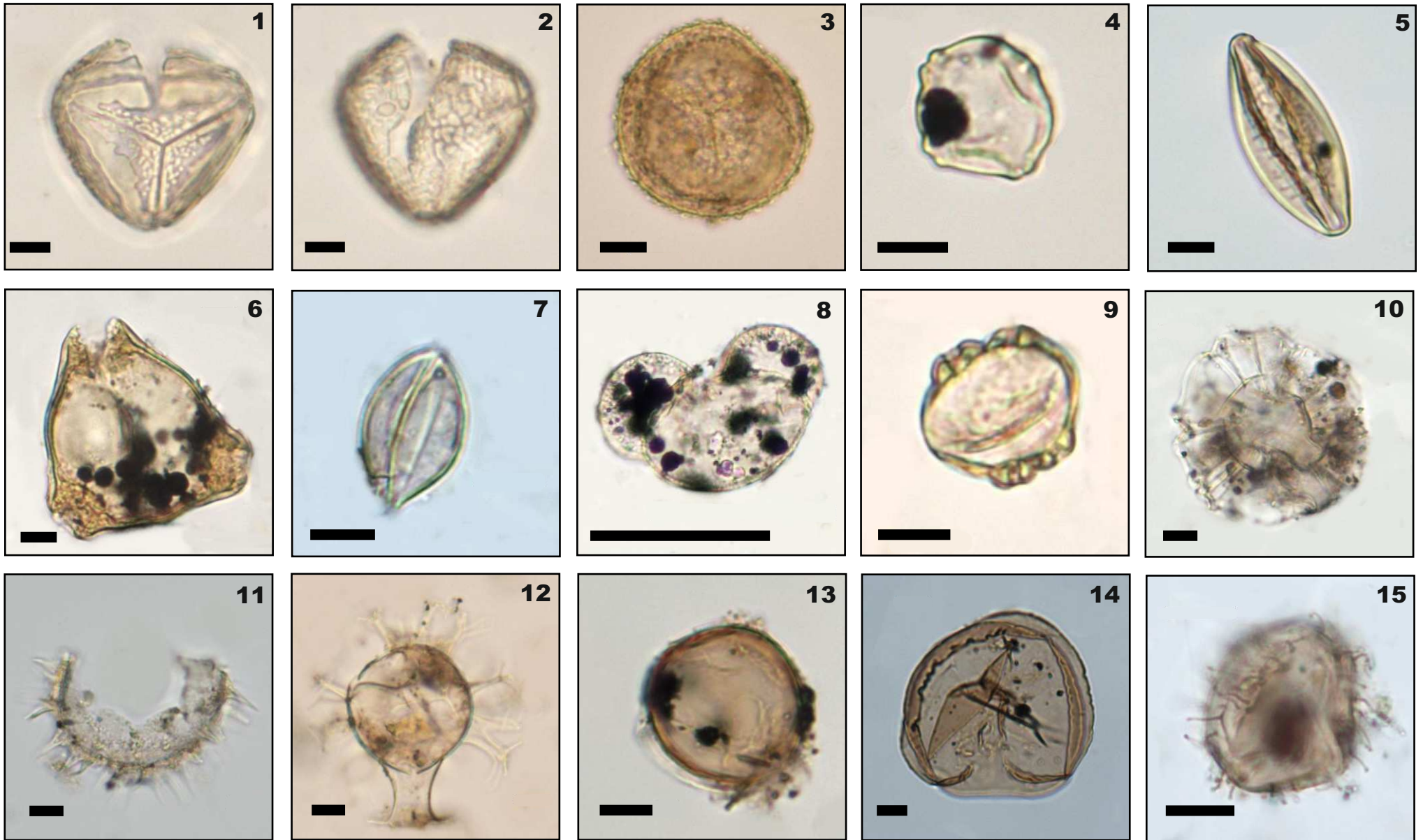


Fig. 9



Supplementary Fig. 1



Supplementary Fig. 2