



Deposited via The University of Leeds.

White Rose Research Online URL for this paper:

<https://eprints.whiterose.ac.uk/id/eprint/147059/>

Version: Published Version

Article:

Tsukagoshi, T, Muto, T, Nomura, H et al. (2019) Discovery of An au-scale Excess in Millimeter Emission from the Protoplanetary Disk around TW Hya. *Astrophysical Journal Letters*, 878 (1). ISSN: 2041-8205

<https://doi.org/10.3847/2041-8213/ab224c>

© 2019. The American Astronomical Society. All rights reserved. Reproduced in accordance with the publisher's self-archiving policy.

Reuse

Items deposited in White Rose Research Online are protected by copyright, with all rights reserved unless indicated otherwise. They may be downloaded and/or printed for private study, or other acts as permitted by national copyright laws. The publisher or other rights holders may allow further reproduction and re-use of the full text version. This is indicated by the licence information on the White Rose Research Online record for the item.

Takedown

If you consider content in White Rose Research Online to be in breach of UK law, please notify us by emailing eprints@whiterose.ac.uk including the URL of the record and the reason for the withdrawal request.



Discovery of An au-scale Excess in Millimeter Emission from the Protoplanetary Disk around TW Hya

Takashi Tsukagoshi¹ , Takayuki Muto², Hideko Nomura^{1,3} , Ryohei Kawabe^{1,4,5} , Kazuhiro D. Kanagawa⁶ , Satoshi Okuzumi³ , Shigeru Ida⁷, Catherine Walsh⁸ , Tom J. Millar⁹ , Sanemichi Z. Takahashi^{1,10} , Jun Hashimoto¹¹, Taichi Uyama^{1,5,12,13} , and Motohide Tamura^{5,11}

¹ Division of Radio Astronomy, National Astronomical Observatory of Japan, Osawa 2-21-1, Mitaka, Tokyo 181-8588, Japan; takashi.tsukagoshi@nao.ac.jp

² Division of Liberal Arts, Kogakuin University, 1-24-2 Nishi-Shinjuku, Shinjuku-ku, Tokyo, 163-8677, Japan

³ Department of Earth and Planetary Sciences, Tokyo Institute of Technology, 2-12-1 Ookayama, Meguro, Tokyo, 152-8551, Japan

⁴ SOKENDAI (The Graduate University for Advanced Studies), 2-21-1 Osawa, Mitaka, Tokyo 181-8588, Japan

⁵ Department of Astronomy, School of Science, University of Tokyo, Bunkyo, Tokyo 113-0033, Japan

⁶ Research Center for the Early Universe, Graduate School of Science, University of Tokyo, Bunkyo, Tokyo 113-0033, Japan

⁷ Earth-Life Science Institute, Tokyo Institute of Technology, 2-12-1 Ookayama, Meguro, Tokyo 152-8550, Japan

⁸ School of Physics and Astronomy, University of Leeds, Leeds LS2 9JT, UK

⁹ Astrophysics Research Centre, School of Mathematics and Physics, Queen's University Belfast, University Road, Belfast BT7 1NN, UK

¹⁰ Department of Applied Physics, Kogakuin University, 1-24-2 Nishi-Shinjuku, Shinjuku-ku, Tokyo, 163-8677, Japan

¹¹ Astrobiology Center, National Institutes of Natural Sciences, 2-21-1 Osawa, Mitaka, Tokyo 181-8588, Japan

¹² Infrared Processing and Analysis Center, California Institute of Technology, Pasadena, CA 91125, USA

¹³ NASA Exoplanet Science Institute, California Institute of Technology, Pasadena, CA 91125, USA

Received 2019 March 25; revised 2019 May 11; accepted 2019 May 17; published 2019 June 6

Abstract

We report the detection of an excess in dust continuum emission at 233 GHz (1.3 mm in wavelength) in the protoplanetary disk (PPD) around TW Hya revealed through high-sensitivity observations at ~ 3 au resolution with the Atacama Large Millimeter/submillimeter Array. The sensitivity of the 233 GHz image has been improved by a factor of 3 with regard to that of our previous cycle 3 observations. The overall structure is mostly axisymmetric, and there are apparent gaps at 25 and 41 au as previously reported. The most remarkable new finding is a few astronomical-unit-scale excess emission in the southwest part of the PPD. The excess emission is located at 52 au from the disk center and is 1.5 times brighter than the surrounding PPD at a significance of 12σ . We performed a visibility fitting to the extracted emission after subtracting the axisymmetric PPD emission and found that the inferred size and the total flux density of the excess emission are 4.4×1.0 au and $250 \mu\text{Jy}$, respectively. The dust mass of the excess emission corresponds to $0.03 M_{\oplus}$ if a dust temperature of 18 K is assumed. Because the excess emission can also be marginally identified in the Band 7 image at almost the same position, the feature is unlikely to be a background source. The excess emission can be explained by a dust clump accumulated in a small elongated vortex or a massive circumplanetary disk around a Neptune-mass-forming planet.

Key words: protoplanetary disks – stars: individual (TW Hya)

1. Introduction

It is widely accepted that protoplanetary disks (PPDs) are the birthplace of planets. Obtaining observational evidence of a forming planet in PPDs is crucial for understanding of the formation and diversity of (exo)planets (Ida & Lin 2004). The detection of a substructure related to a forming planet is a promising way to investigate the planet formation process. Recent high-resolution observations using the Atacama Large Millimeter/submillimeter Array (ALMA) have revealed complex disk substructures, such as multiple, axisymmetric gaps, spiral arms, and lopsided emissions (e.g., DSHARP; Andrews et al. 2018), which are likely related to the planet formation process.

On the other hand, it is theoretically predicted that the forming planet accretes material from a circumplanetary disk (CPD). Such CPDs hold the promise of direct detection with sensitive detectors as a localized small-scale substructure in the PPD, and some theoretical models suggest that CPDs should be detectable at millimeter wavelengths (Zhu et al. 2016). Large-scale nonaxisymmetric substructure in PPDs has been found at millimeter wavelengths for Oph IRS 48 (~ 60 au in azimuthal extent; van der Marel et al. 2013), HD 142527 (~ 150 au; Casassus et al. 2013; Fukagawa et al. 2013), MWC 758

(~ 30 au; Dong et al. 2018), HD 143006 (~ 86 au; Pérez et al. 2018), HD 163296 (~ 17 au; Isella et al. 2018), and HD 135344B (~ 210 au; Cazzoletti et al. 2018). These lopsided substructures are interpreted as the accumulation of dust particles due to a large-scale gas vortex in the PPD. On the other hand, astronomical-unit-scale substructures or nonaxisymmetric components, which are expected to be the signatures of CPDs, have not yet been discovered at these wavelengths (Isella et al. 2014).

TW Hya is the nearest T Tauri star with a distance of 59.5 pc (Gaia Collaboration et al. 2016). The stellar mass is $0.8 M_{\odot}$ and the stellar age is 10 Myr (Andrews et al. 2012). The disk orientation is almost face-on with an inclination of 7° (Qi et al. 2004). High-resolution observations with ALMA have resolved multiple axisymmetric gaps; in particular, deep gaps at ~ 25 and 41 au (Andrews et al. 2016; Tsukagoshi et al. 2016; Huang et al. 2018). Evidence for nonaxisymmetry or small-scale substructure has not yet been reported for the PPD around TW Hya.

In this Letter, we report the results of our high-sensitivity observations at Band 6 using ALMA and the first finding of an astronomical-unit-scale substructure at a radius of 52 au in the PPD around TW Hya. We describe our observations and data

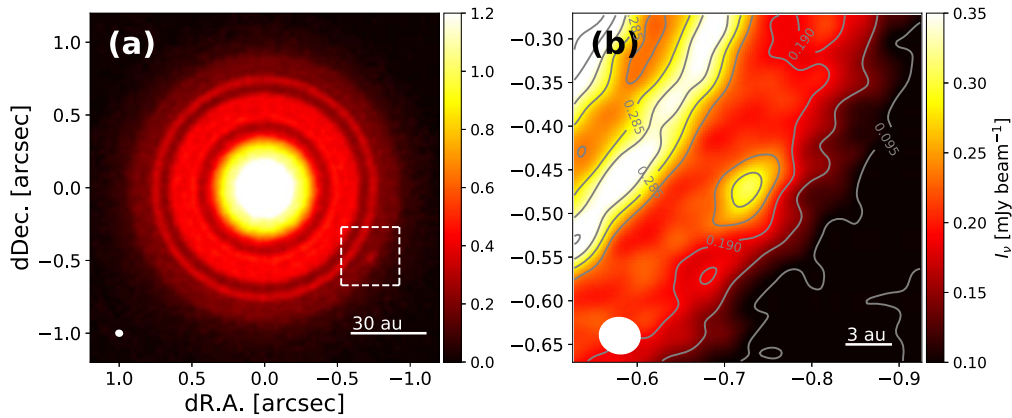


Figure 1. 233 GHz continuum maps. The white ellipse at the bottom left corner of each panel indicates the beam size of the synthesized images. (a) Overall distribution of the 233 GHz continuum emission. (b) Close-up view of the $0''.4 \times 0''.4$ box including the emission feature (white box in the main panel). The contour interval is 5σ , where $1\sigma = 9.1 \mu\text{Jy beam}^{-1}$.

reduction in Section 2. In Section 3, we show the resulting images of the Band 6 continuum emission, and the finding of the astronomical-unit-scale substructure in the TW Hya disk is presented. In Section 4, we discuss the detailed structure and the expected origin of the substructure.

2. Observations

2.1. Sensitive ALMA Observation at Band 6

Our 233 GHz (1.3 mm) continuum observations at Band 6 toward TW Hya were carried out using ALMA on 2017 May 15 with array configuration C40-5 (2016.1.00842.S) and in the period from 2017 November 20 to 25 with C43-8 (2017.1.00520.S). The total on-source integration times were ~ 12 and ~ 200 minutes, respectively. The correlator was configured to detect dual polarizations in four spectral windows with a bandwidth of 1.875 GHz each, resulting in a bandwidth of 7.5 GHz in total. The four spectral windows were tuned to detect continuum emission centered at 225, 227, 239, and 241 GHz. The phase fluctuations of the complex gain due to atmospheric noise were calibrated by observing quasars J1051–3138 or J1103–3251. Quasars J1107–4449, J1058+0133, or J1037–2934 were used for the calibration of the bandpass characteristics and flux scales were determined by observing J1058+0133, J1107–4449, or J1037–2934.

The observed visibilities were reduced and calibrated using the Common Astronomical Software Application (CASA) package (McMullin et al. 2007). The initial flagging of the visibilities and the calibrations for the bandpass characteristics, complex gain, and flux scaling were performed using the pipeline scripts provided by ALMA. After flagging the bad data, the corrected data were concatenated and imaged by CLEAN. The CLEAN map was created by adopting Briggs weighting with a robust parameter of 0.5. We also employed the multiscale CLEAN with scale parameters of $[0, 42, 126]$ mas for better reconstruction of extended emission. After that, self-calibration was applied for the concatenated data set. The spatial resolution of the CLEANed image was 46.88×41.56 mas, full width at half maximum (FWHM) with a position angle of $-78^\circ.9$, corresponding to 2.79×2.48 au. The 1σ root mean square (rms) noise level achieved was $9.1 \mu\text{Jy beam}^{-1}$.

2.2. Data Reduction of the Band 7 Archive Data

To validate the new results revealed by our Band 6 observations, we have also analyzed eight sets of ALMA archival data at Band 7 from Cycle 3. The highest resolution data obtained by Andrews et al. (2016) is included, which is taken at the beginning of 2015 December, two years before our observations. Data reduction has been done in the same manner as for our Band 6 observations described above. Line free channels were used for making the map of continuum emission at Band 7. The center frequency of the concatenated data was 325.4 GHz. The calibrated data were concatenated and imaged by CLEAN with an iterative self-calibration. For the imaging, we adopt Briggs weighting with a robust parameter of -1.0 so that the synthesized beam can be described well by a single Gaussian function. Multiscale CLEAN with scale parameters of $[0, 30, 90]$ mas was employed. The final CLEANed image had a synthesized beam size of 36.4×28.9 mas (2.2×1.7 au) with a position angle of $69^\circ.9$. To reduce phase noise, we have smoothed the final CLEANed image to 50 mas resolution using the *imsmooth* task on CASA. The rms noise level of the resultant image is $27.7 \mu\text{Jy beam}^{-1}$.

3. Results

Figure 1(a) shows the global distribution of the 233 GHz continuum emission. The total flux density from the PPD and the known axisymmetric features, gaps at 25 and 41 au, are consistent with previous works (Andrews et al. 2016; Tsukagoshi et al. 2016; Huang et al. 2018).

In the southwest part of the PPD, the resolved excess of emission is discovered at a radius of 52 au, as shown in Figure 1(b). The peak intensity of this feature is measured to be $308.4 \mu\text{Jy beam}^{-1}$, corresponding to a signal-to-noise ratio of 34. The excess of emission is significant in comparison to the surrounding background emission of the PPD. The excess is clearly detected both in the radial and in the azimuthal profiles as shown in Figure 2. The average of the surrounding emission is measured to be $197.1 \mu\text{Jy beam}^{-1}$ from position angles of $226^\circ\text{--}230^\circ$ and $244^\circ\text{--}248^\circ$; hence, the excess is calculated to be $111.5 \pm 9.1 \mu\text{Jy beam}^{-1}$ ($\sim 12\sigma$), i.e., the emission feature is 1.5 times brighter than the surrounding PPD. There is no clear excess of emission above 3σ in this radial region of the PPD except for the emission feature. We also note that no clear gap-like structure is found at 52 au from the central star.

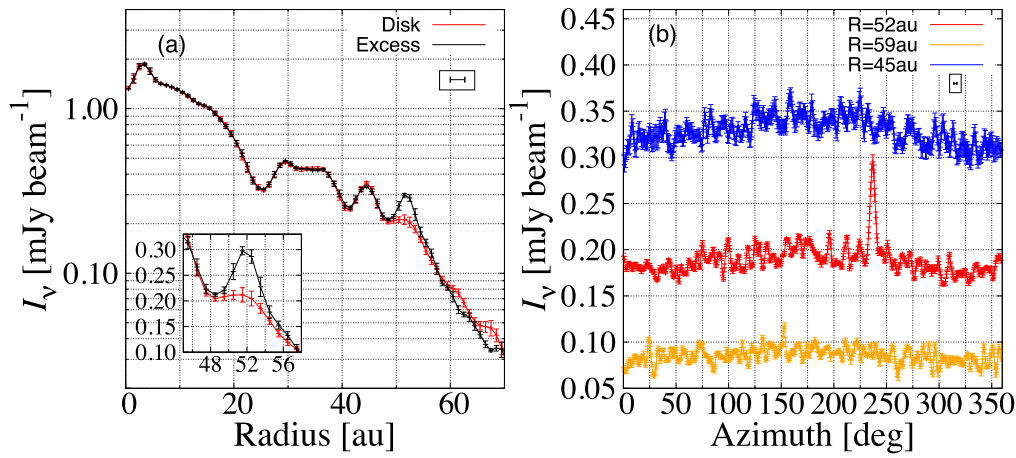


Figure 2. Deprojected radial and azimuthal profiles of the 233 GHz continuum emission. The bar at the top-right corner in the box shows the FWHM of the synthesized beam. The error bars are determined from the standard error through the averaging. (a) Radial profile running through the emission feature (P.A. = 236° – 238°) is shown in black. The red line represents the radial profile averaged over the neighborhood of the emission feature (P.A. = 222° – 236° and 238° – 252°). The panel at the bottom left corner of the left panel shows the close-up view of the radial profile around 52 au on a linear scale. (b) Azimuthal profiles of the emission at radii of 52, 59, and 45 au are shown in red, yellow, and blue, respectively.

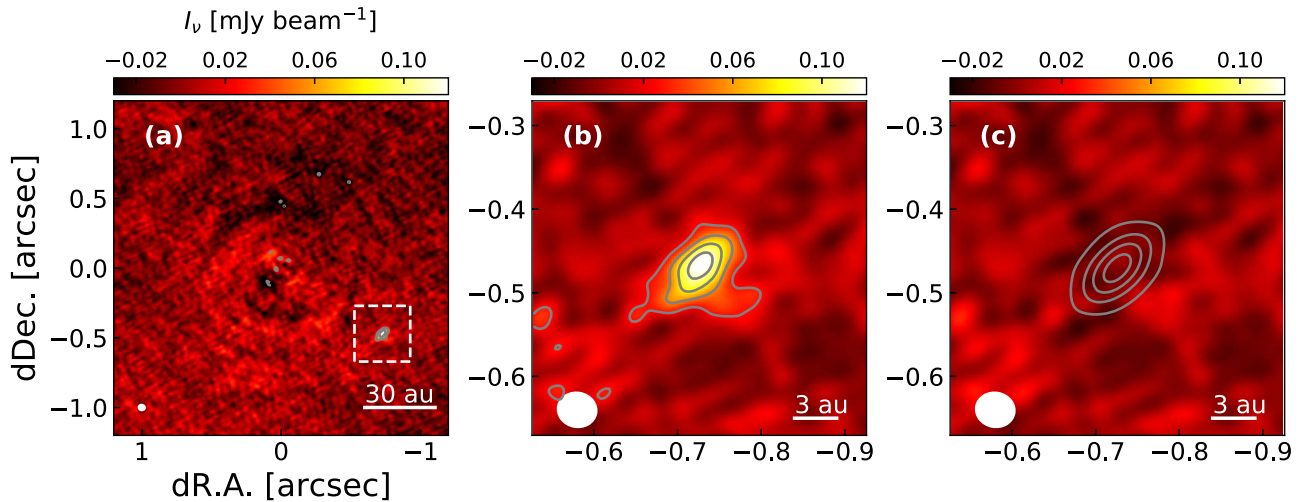


Figure 3. 233 GHz images after the extraction of the emission feature. (a) CLEANed image of the residual emission reconstructed from the visibilities obtained by subtracting the axisymmetric emission in the u - v plane. (b) Close-up view of the $0''.4 \times 0''.4$ box of the residual image (white box in the main panel (a)). The gray contour starts at $\pm 3\sigma$ with an interval of 3σ . (c) Result of the 2D Gaussian fitting to the emission feature (contour) and the difference between the fitted Gaussian and the extracted emission feature (color). The gray contour starts at $\pm 3\sigma$ with an interval of 3σ .

Since the emission from the PPD is almost wholly axisymmetric, the emission feature is extracted by subtracting the axisymmetric background emission in the visibility (i.e., u - v) domain. The size, position, and total flux density of the emission feature are measured by model fitting in the u - v domain using the residual visibilities.

The subtraction process works well as shown in Figures 3(a) and (b). To deduce the structure of the emission feature, we performed a least squares fitting to the subtracted visibilities using the *uvmodelfit* task installed on CASA. A single component described by a Gaussian function was assumed for the model. The modeled visibilities determined by the fitting were converted to an image using CLEAN with the same parameters as for the original image, and the resulting image is shown in Figure 3(c). From the fitting, the peak position of the emission feature is measured to be $(\Delta\alpha, \Delta\delta) = (-726 \pm 1, -471 \pm 1)$ mas from the central star, corresponding to $(-43.2 \pm 0.1, -28.0 \pm 0.1)$ au or a radius of 51.5 ± 0.1 au. The FWHMs of major and minor axes of the fitted Gaussian are

measured to be $(74.7 \pm 3.3) \times (16.2 \pm 3.2)$ mas with a position angle of $-38.3 \pm 2.1^\circ$, corresponding to $(4.4 \pm 0.2) \times (1.0 \pm 0.2)$ au. The total intensity of the fitted Gaussian is $250 \pm 5 \mu\text{Jy}$.

The brightness temperature of the emission feature can be converted from the total flux density. Assuming that the millimeter emission of the PPD behind the resolved feature is uniform, the total flux density of the background inside the feature area is estimated to be $122 \mu\text{Jy}$ from the average of the surrounding emission, and thus the summation of the total flux density inside this area is $372 \mu\text{Jy}$. Therefore, the brightness temperature at the position of the emission feature is converted using the Planck function to be 11.6 K. The brightness temperature is nearly equal to or less than the temperature of the dust disk at 52 au, where ~ 14 – 18 K is expected from the midplane temperature profile (Andrews et al. 2016; Tsukagoshi et al. 2016; Huang et al. 2018), indicating that the emission feature may be partially optically thin.

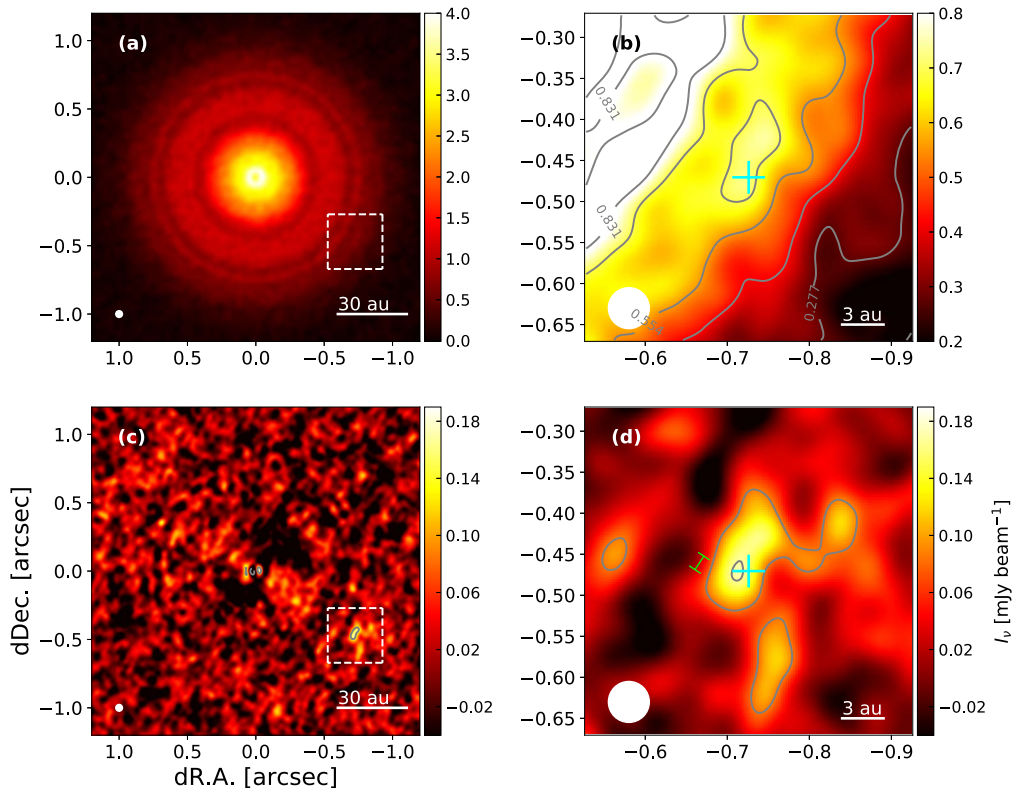


Figure 4. 325 GHz continuum map at 50 mas resolution made from the publicly available data. The white ellipse in the bottom left corner of each panel indicates the beam size of the images. (a) Overall distribution of the emission. (b) Close-up view of the box with white dotted lines in the panel (a). The contour interval is 5σ , where $1\sigma = 27.7 \mu\text{Jy beam}^{-1}$. The cross in cyan indicates the peak position of the emission feature identified in our 233 GHz image. (c) Residual emission after the subtraction of the axisymmetric component from the overall image. The $\pm 5\sigma$ contour is shown. (d) Close-up view of the box with white dotted lines in the panel (c). The contour starts at $\pm 3\sigma$ with an interval of 3σ . The green line on the left of the emission feature indicates the expected Keplerian motion at 52 au for 2 yr.

Assuming optically thin conditions, the mass of the emission feature is estimated from the equation

$$M_{\text{dust}} = \frac{F_{\nu} d^2}{\kappa_{\nu} B(T_{\text{dust}})}, \quad (1)$$

where F_{ν} is the integrated flux density, d is the distance to the source, and $B(T_{\text{dust}})$ is the Planck function for the dust temperature T_{dust} . We employ a dust mass opacity coefficient κ_{ν} of $2.3 \text{ cm}^2 \text{ g}^{-1}$ at a frequency of 233 GHz, which is determined from κ_{ν} of $2.8 \text{ cm}^2 \text{ g}^{-1}$ at a wavelength of $870 \mu\text{m}$ (Andrews et al. 2012) and β , the power-law index of κ_{ν} , of ~ 0.5 . Assuming $T_{\text{dust}} = 18 \text{ K}$ (Huang et al. 2018), the total dust mass of the emission feature is $(2.83 \pm 0.06) \times 10^{-2} M_{\oplus}$, where M_{\oplus} indicates the Earth mass. It should be noted that the estimated mass depends on the uncertainty of the opacity and could be a lower limit because the emission may not be completely optically thin.

The emission feature can also be seen in a high-resolution 325 GHz ALMA image within close proximity to the location of our 233 GHz emission feature. The 325 GHz continuum image we reconstructed from the archive data is shown in Figures 4(a) and (b), and the subtracted image made by using the same procedure as done for our 233 GHz data is shown in Figures 4(c) and (d). It is clear that there is a local emission peak near the position of the emission feature that we found in the 233 GHz map, while the emission seems to be azimuthally elongated. The positional offset between the emission feature at Band 6 and the residual emission at Band 7 is much less than the proper motion of the TW Hya system. If the excess

emission is a background source, the positional offset must be 136 mas for 2 yr in the R.A. direction according to the proper motion of the TW Hya system ($(-68.225, -13.934) \text{ mas yr}^{-1}$; Gaia Collaboration et al. 2016). The positional deviation of the residual emission at Band 7 is within only ~ 50 mas with respect to the emission feature at Band 6, as shown in Figure 4. Therefore, we conclude that the emission feature we found is situated in the PPD and is likely orbiting the central star. Due to the significant phase noise of the Band 7 data, we conservatively conclude that it is unclear whether there is a positional offset due to the Keplerian motion for 2 yr (see Figure 4(d)).

Lastly, we also note that the millimeter flux density fluctuates azimuthally (see the profile at 45 au in Figure 2(b)). The fluctuation might be related to a moving surface brightness asymmetry, which is probably due to disk shadow (Debes et al. 2017), but we do not focus on this structure in this Letter.

4. Discussion

We have found a few astronomical-unit-scale, elongated emission feature in the PPD of TW Hya. Similar asymmetric structures have been found in several other PPDs as listed in Section 1, but the feature in the TW Hya disk is the smallest ever discovered.

In many PPDs, the asymmetric features are interpreted as the dust particles trapped in a gas vortex (e.g., Raettig et al. 2015). The morphology of the emission feature we found may also be interpreted along this line. The width of the gas vortex is

limited to several times the gas scale height. The radial half width of the emission feature is only ~ 0.5 au and is much smaller than the expected gas scale height at this radius, which is $\sim 4\text{--}5$ au (Andrews et al. 2012). The emission feature is azimuthally elongated and the ratio of the azimuthal to the radial widths, or aspect ratio, is ~ 4 . The shape of gas vortices has been investigated by several authors (Lesur & Papaloizou 2009; Richard et al. 2013), and the aspect ratio of stable vortices is of the order of \sim several. The dust particles trapped in a gas vortex are concentrated at the vortex center, but the aspect ratio of the dust distribution is similar to that of gas (Lyra & Lin 2013).

The mean surface density of the emission feature is expected to be ~ 2 times higher than that of the surrounding PPD under the assumption that the temperature at 52 au is constant at 18 K (Huang et al. 2018). If the overall dust-to-gas mass ratio of the TW Hya disk is ~ 100 , the excess emission region may have a dust-to-gas mass ratio of around 50. Such a small overdensity may be realized even with a weak gas vortex.

The gas disk may be full of such “weak vortices” if the PPD is moderately turbulent. A chain of vortices in the same radial location will merge into one vortex (e.g., Ono et al. 2018), but there may be more vortices at different radii. In this sense, the emission feature could be a “tip of the iceberg” of even smaller dust concentrations.

An alternative scenario that may explain why there is only one emission feature is the existence of a planet. If there is a planet accreting gas and dust from the surrounding PPD (e.g., Pollack et al. 1996; Canup & Ward 2002), the temperature and the density may increase locally (e.g., Owen 2014) and a CPD may be formed around the planet. The emission feature may be the remnant of the accretion onto the planet and/or the CPD.

We first make a rough estimate of the planet mass using the radial half width of the emission feature (~ 0.5 au), which may be interpreted as the maximum radius of the putative CPD. The size of the CPD is considered to be several times smaller than the Hill radius $r_H = r_p (M_{\text{pl}}/3M_*)^{1/3}$, where, r_p is the orbital radius of the planet, M_{pl} is the planet mass, and M_* is the mass of the central star. The exact size of the CPD has recently been a topic of active debate. It has been considered as $\sim r_H/3$ (Quillen & Trilling 1998; Ayliffe & Bate 2009) while recent simulations indicate that it may be $\sim r_H/10$ or smaller for a low-mass planet like Neptune (e.g., Wang et al. 2014; Ormel et al. 2015; Szulágyi et al. 2018). The size of the emission feature corresponds to $r_H/3$ for a Neptune mass planet and $r_H/10$ for a 30 Neptune mass planet.

Two observational evidences prefer a lower mass planet. First, the existence of a planet more massive than $\sim 1\text{--}2$ Jovian mass ($\sim 20\text{--}40$ Neptune mass) at ~ 50 au from the central star is ruled out by $3.8 \mu\text{m}$ (L' -band) observations (Ruane et al. 2017). Second, we do not observe any gap structure at $r \sim 50$ au. This requires a low planet mass and/or high viscosity (e.g., Kanagawa et al. 2017). Dipierro & Laibe (2017) discuss that a planet with a mass of $\lesssim \text{several} \times 10^{-5} M_*$, roughly corresponding to Neptune mass, does not form a significant gap in both the gas and dust distributions, while such low-mass planets may still open a gap in a low viscosity ($\alpha \lesssim 10^{-4}$) environment (e.g., Dong et al. 2017, 2018). Since only loose upper limits on the α -parameter of viscosity is given observationally ($\alpha \lesssim \text{several} \times 10^{-3}$; Teague et al. 2016; Flaherty et al. 2018), we consider ~ 1 Neptune mass as an upper limit for the planet mass.

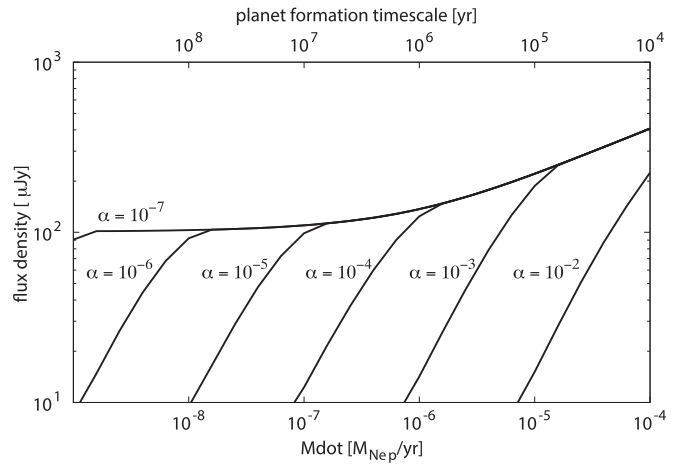


Figure 5. Flux density of the model CPDs for a range of viscous parameters α and mass accretion rates \dot{M} . The horizontal axis shows the mass accretion rate in units of Neptune masses per year. The upper horizontal axis indicates the planet formation timescale, which is calculated by M_{pl}/\dot{M} assuming a constant mass accretion rate. Different solid lines are for calculations with different viscous parameters.

However, it should be noted that the observed emission feature may not be fully accounted for by emission from a CPD. We use a simple model by Zhu et al. (2016) to estimate the flux density at millimeter wavelengths from the CPD with a radius of $r_H/3$ around a Neptune mass planet. Figure 5 shows the flux density of the modeled CPDs for a range of viscous parameters α and mass accretion rates onto the planet \dot{M} . If the mass accretion rate is $10^{-7} M_{\text{Nep}}$ per year, the flux density of the CPD is no larger than $\sim 100 \mu\text{Jy}$. We consider this as an upper limit because the CPD around a low-mass planet may be much smaller in size, resulting in a much smaller emitting area. This value may be compared with the observed emission within a circle with a diameter of 1 au, which is $\sim 60 \mu\text{Jy}$ as the total emission is $\sim 250 \mu\text{Jy}$ within 4.4×1.0 au. Therefore, a part of the excess emission may come from the CPD while the entire emission may be accounted for by the overdensity due to a surrounding envelope-like structure of accreting material around the system of the planet and the CPD.

In short, in the case of the planet scenario, the allowed planet mass range may be limited to 1 Neptune mass or less. The CPD around the putative planet may account for a part of the excess emission, while it is not possible to explain the entire feature. We note that Dong et al. (2018) suggested a ~ 2 Neptune mass planet at 45 au as a cause of gap structures. The putative planet at the location of the emission feature may not coexist with this planet because the orbits are too close together to form a stable system.

With observations at millimeter wavelengths only, it seems difficult to judge whether the hypothetical planet actually exists at the location of the emission feature. The simple CPD model described above suggests that the millimeter emission from the CPD is similar to that of dust concentration within a gas vortex, making it difficult to determine whether the planet exists or not. The most prominent feature of an accreting planet is that the material is heated up to $\gtrsim 1000$ K in the close vicinity of the planet. Therefore, direct imaging observations at infrared wavelengths of the detection of an accretion signature in emission lines may be critical to prove (or rule out) the existence of a planet. Furthermore, high angular resolution observations of molecular line emission may reveal the

kinematics of the emission feature, thus providing further evidence for the presence or otherwise of a vortex.

This Letter makes use of the following ALMA data: ADS/JAO.ALMA#2017.1.00520.S and 2016.1.00842.S. We also use the following public ALMA archive data: ADS/JAO.ALMA#2015.1.00308.S, 2015.1.00686.S, 2016.1.00229.S, 2016.1.00311.S, 2016.1.00440.S, 2016.1.00464.S, 2016.1.00629.S, and 2016.1.01495.S. ALMA is a partnership of ESO (representing its member states), NSF (USA) and NINS (Japan), together with NRC (Canada), NSC and ASIAA (Taiwan), and KASI (Republic of Korea), in cooperation with the Republic of Chile. The Joint ALMA Observatory is operated by ESO, AUI/NRAO, and NAOJ. A part of the data analysis was carried out on the common-use data analysis computer system at the Astronomy Data Center of NAOJ. This work was supported by JSPS KAKENHI grant Nos. 17K14244, 17H01103, 18H05441, and 19K03932. T.J.M. thanks STFC for support under grant reference ST/P000321/1. C.W. acknowledges financial support from STFC (grant reference ST/R000549/1) and the University of Leeds.

Facility: ALMA.

Software: astropy, CASA.

ORCID iDs

Takashi Tsukagoshi  <https://orcid.org/0000-0002-6034-2892>

Hideko Nomura  <https://orcid.org/0000-0002-7058-7682>

Ryohei Kawabe  <https://orcid.org/0000-0002-8049-7525>

Kazuhiro D. Kanagawa  <https://orcid.org/0000-0001-7235-2417>

Satoshi Okuzumi  <https://orcid.org/0000-0002-1886-0880>

Catherine Walsh  <https://orcid.org/0000-0001-6078-786X>

Tom J. Millar  <https://orcid.org/0000-0001-5178-3656>

Sanemichi Z. Takahashi  <https://orcid.org/0000-0003-3038-364X>

Taichi Uyama  <https://orcid.org/0000-0002-6879-3030>

Motohide Tamura  <https://orcid.org/0000-0002-6510-0681>

References

- Andrews, S. M., Huang, J., Pérez, L. M., et al. 2018, *ApJL*, 869, L41
 Andrews, S. M., Wilner, D. J., Hughes, A. M., et al. 2012, *ApJ*, 744, 162
 Andrews, S. M., Wilner, D. J., Zhu, Z., et al. 2016, *ApJL*, 820, L40
 Ayliffe, B. A., & Bate, M. R. 2009, *MNRAS*, 397, 657
 Canup, R. M., & Ward, W. R. 2002, *AJ*, 124, 3404
 Casassus, S., van der Plas, G., Sebastian Perez, M., et al. 2013, *Natur*, 493, 191
 Cazzoletti, P., van Dishoeck, E. F., Pinilla, P., et al. 2018, *A&A*, 619, A161
 Debes, J. H., Poteet, C. A., Jang-Condell, H., et al. 2017, *ApJ*, 835, 205
 Dipierro, G., & Laibe, G. 2017, *MNRAS*, 469, 1932
 Dong, R., Li, S., Chiang, E., & Li, H. 2017, *ApJ*, 843, 127
 Dong, R., Li, S., Chiang, E., & Li, H. 2018, *ApJ*, 866, 110
 Dong, R., Liu, S.-y., Eisner, J., et al. 2018, *ApJ*, 860, 124
 Flaherty, K. M., Hughes, A. M., Teague, R., et al. 2018, *ApJ*, 856, 117
 Fukagawa, M., Tsukagoshi, T., Momose, M., et al. 2013, *PASJ*, 65, L14
 Gaia Collaboration, Brown, A. G. A., Vallenari, A., et al. 2016, *A&A*, 595, A2
 Huang, J., Andrews, S. M., Cleeves, L. I., et al. 2018, *ApJ*, 852, 122
 Ida, S., & Lin, D. N. C. 2004, *ApJ*, 616, 567
 Isella, A., Chandler, C. J., Carpenter, J. M., Pérez, L. M., & Ricci, L. 2014, *ApJ*, 788, 129
 Isella, A., Huang, J., Andrews, S. M., et al. 2018, *ApJL*, 869, L49
 Kanagawa, K. D., Tanaka, H., Muto, T., & Tanigawa, T. 2017, *PASJ*, 69, 97
 Lesur, G., & Papaloizou, J. C. B. 2009, *A&A*, 498, 1
 Lyra, W., & Lin, M.-K. 2013, *ApJ*, 775, 17
 McMullin, J. P., Waters, B., Schiebel, D., Young, W., & Golap, K. 2007, in *ASP Conf. Ser. 376, Astronomical Data Analysis Software and Systems XVI*, ed. R. A. Shaw, F. Hill, & D. J. Bell (San Francisco, CA: ASP), 127
 Ono, T., Muto, T., Tomida, K., & Zhu, Z. 2018, *ApJ*, 864, 70
 Ormel, C. W., Shi, J.-M., & Kuiper, R. 2015, *MNRAS*, 447, 3512
 Owen, J. E. 2014, *ApJ*, 789, 59
 Pérez, L. M., Benisty, M., Andrews, S. M., et al. 2018, *ApJL*, 869, L50
 Pollack, J. B., Hubickyj, O., Bodenheimer, P., et al. 1996, *Icar*, 124, 62
 Qi, C., Ho, P. T. P., Wilner, D. J., et al. 2004, *ApJL*, 616, L11
 Quillen, A. C., & Trilling, D. E. 1998, *ApJ*, 508, 707
 Raettig, N., Klahr, H., & Lyra, W. 2015, *ApJ*, 804, 35
 Richard, S., Barge, P., & Le Dizès, S. 2013, *A&A*, 559, A30
 Ruane, G., Mawet, D., Kastner, J., et al. 2017, *AJ*, 154, 73
 Szulágyi, J., Cilibrasi, M., & Mayer, L. 2018, *ApJL*, 868, L13
 Teague, R., Guilloteau, S., Semenov, D., et al. 2016, *A&A*, 592, A49
 Tsukagoshi, T., Nomura, H., Muto, T., et al. 2016, *ApJL*, 829, L35
 van der Marel, N., van Dishoeck, E. F., Bruderer, S., et al. 2013, *Sci*, 340, 1199
 Wang, H.-H., Bu, D., Shang, H., & Gu, P.-G. 2014, *ApJ*, 790, 32
 Zhu, Z., Ju, W., & Stone, J. M. 2016, *ApJ*, 832, 193