

This is a repository copy of *The process and delivery of CBT for depression in adults: a systematic review and network meta-analysis*.

White Rose Research Online URL for this paper:

<https://eprints.whiterose.ac.uk/146512/>

Version: Published Version

---

**Article:**

López-López, José A., Davies, Sarah R, Caldwell, Deborah M et al. (11 more authors) (2019) The process and delivery of CBT for depression in adults: a systematic review and network meta-analysis. *Psychological Medicine*. pp. 1-11. ISSN 0033-2917

<https://doi.org/10.1017/S003329171900120X>

---

**Reuse**

This article is distributed under the terms of the Creative Commons Attribution (CC BY) licence. This licence allows you to distribute, remix, tweak, and build upon the work, even commercially, as long as you credit the authors for the original work. More information and the full terms of the licence here:

<https://creativecommons.org/licenses/>

**Takedown**

If you consider content in White Rose Research Online to be in breach of UK law, please notify us by emailing [eprints@whiterose.ac.uk](mailto:eprints@whiterose.ac.uk) including the URL of the record and the reason for the withdrawal request.

## Review Article

\*These authors contributed equally to this paper.

**Cite this article:** López-López JA *et al* (2019). The process and delivery of CBT for depression in adults: a systematic review and network meta-analysis. *Psychological Medicine* 1–11. <https://doi.org/10.1017/S003329171900120X>

Received: 11 July 2018

Revised: 1 May 2019

Accepted: 7 May 2019

### Key words:

Cognitive-behavioural therapy; depression; multimedia; network meta-analysis; systematic review

### Author for correspondence:

José A López-López, E-mail: [josealopezlopez@um.es](mailto:josealopezlopez@um.es)

# The process and delivery of CBT for depression in adults: a systematic review and network meta-analysis

José A. López-López<sup>1,2,3</sup>, Sarah R. Davies<sup>1,2</sup>, Deborah M. Caldwell<sup>1,2</sup>, Rachel Churchill<sup>4</sup>, Tim J. Peters<sup>1</sup>, Deborah Tallon<sup>1,2</sup>, Sarah Dawson<sup>1,2</sup>, Qi Wu<sup>5</sup>, Jinshuo Li<sup>5</sup>, Abigail Taylor<sup>1,2</sup>, Glyn Lewis<sup>6</sup>, David S. Kessler<sup>1,2,\*</sup>, Nicola Wiles<sup>1,2,\*</sup> and Nicky J. Welton<sup>1,\*</sup>

<sup>1</sup>Department of Population Health Sciences, Bristol Medical School, University of Bristol, Bristol, UK; <sup>2</sup>Centre for Academic Mental Health, Bristol Medical School, University of Bristol, Bristol, UK; <sup>3</sup>Department of Basic Psychology & Methodology, Faculty of Psychology, University of Murcia, Murcia, Spain; <sup>4</sup>Centre for Reviews and Dissemination, University of York, York, UK; <sup>5</sup>Faculty of Health Sciences, University of York, York, UK and <sup>6</sup>Division of Psychiatry, Faculty of Brain Sciences, University College London, London, UK

## Abstract

Cognitive-behavioural therapy (CBT) is an effective treatment for depressed adults. CBT interventions are complex, as they include multiple content components and can be delivered in different ways. We compared the effectiveness of different types of therapy, different components and combinations of components and aspects of delivery used in CBT interventions for adult depression. We conducted a systematic review of randomised controlled trials in adults with a primary diagnosis of depression, which included a CBT intervention. Outcomes were pooled using a component-level network meta-analysis. Our primary analysis classified interventions according to the type of therapy and delivery mode. We also fitted more advanced models to examine the effectiveness of each content component or combination of components. We included 91 studies and found strong evidence that CBT interventions yielded a larger short-term decrease in depression scores compared to treatment-as-usual, with a standardised difference in mean change of  $-1.11$  (95% credible interval  $-1.62$  to  $-0.60$ ) for face-to-face CBT,  $-1.06$  ( $-2.05$  to  $-0.08$ ) for hybrid CBT, and  $-0.59$  ( $-1.20$  to  $0.02$ ) for multimedia CBT, whereas wait list control showed a detrimental effect of  $0.72$  ( $0.09$  to  $1.35$ ). We found no evidence of specific effects of any content components or combinations of components. Technology is increasingly used in the context of CBT interventions for depression. Multimedia and hybrid CBT might be as effective as face-to-face CBT, although results need to be interpreted cautiously. The effectiveness of specific combinations of content components and delivery formats remain unclear. Wait list controls should be avoided if possible.

## Background

Major depressive disorder is a common psychiatric condition and a leading cause of disability worldwide (Bridges, 2014; World Health Organization, 2018). Globally, depression affects more than 300 million people and is associated with marked personal, social and economic morbidity, loss of functioning and productivity, and high levels of health-care service use (National Institute for Clinical Excellence, 2009; Thapar *et al.*, 2012).

The effects of psychological interventions for treatment of adult depression have been shown to be comparable to those achieved with pharmacological intervention, and are probably longer-lasting (Cuijpers and Gentili, 2017). In particular, cognitive-behavioural therapy (CBT) is a common and effective psychological intervention for the treatment of depression (Churchill *et al.*, 2002; Butler *et al.*, 2006; National Institute for Clinical Excellence, 2009; Shafraan *et al.*, 2009; Lepping *et al.*, 2017). CBT is considered a ‘family’ of related therapies (Beck, 2005; Mansell, 2008), and intervention protocols variously incorporate a range of components such as psychoeducation, homework, behavioural activation, and problem solving. These can be used alone or in multiple combinations.

CBT interventions are complex, as they often include multiple therapeutic components and can be delivered in a number of ways. Whilst more usually administered in a traditional face-to-face setting (either individually or in groups), CBT is increasingly conducted via multimedia platforms (Button *et al.*, 2012). Multimedia CBT interventions can be provided with varying amounts of therapist interaction, with ‘self-help’ or ‘self-directed’ approaches characterised by a standardised treatment protocol that is followed by the patient without face-to-face contact with the therapist (Cuijpers and Kleiboer, 2017). Hybrid CBT interventions, including

© Cambridge University Press 2019. This is an Open Access article, distributed under the terms of the Creative Commons Attribution licence (<http://creativecommons.org/licenses/by/4.0/>), which permits unrestricted re-use, distribution, and reproduction in any medium, provided the original work is properly cited.

both face-to-face sessions and multimedia features, are also possible. Moreover, in a context where CBT is often not accessible for patients who could benefit from it (Shafran *et al.*, 2009; Wiles *et al.*, 2012), multimedia and hybrid interventions constitute promising alternatives to improve coverage for depressed adults (Cuijpers and Kleiboer, 2017).

The proliferation of CBT interventions raises questions about the relative effectiveness of different components and combinations of components of CBT interventions, as well as different delivery formats, and it is important to understand these effects both for clinical practice and for the development of novel interventions, such as hybrid interventions. Attempts to assess the effectiveness of different components/combinations of components of CBT for adult depression have largely taken the form of dismantling studies where two combinations of components are directly compared (Jacobson *et al.*, 1996; Vázquez *et al.*, 2015). Likewise, pairwise meta-analyses of studies comparing two intervention types (e.g. face-to-face *v.* multimedia CBT) have been conducted (Cuijpers *et al.*, 2010). However, the number of components and therapy types that can be examined using these approaches is limited. Furthermore, this does not allow the different process and content components of CBT to be simultaneously assessed. In this paper we explore the use of network meta-analysis to estimate the relative effectiveness of different content components and delivery formats reported in RCTs of CBT for depression, allowing the synthesis of a broader set of studies than dismantling studies and pairwise meta-analyses of a single intervention feature.

Network meta-analysis (NMA) (Higgins and Whitehead, 1996; Caldwell *et al.*, 2005; Dias *et al.*, 2013) allows pooling evidence on multiple interventions from a set of RCTs, each of which compare two or more of the interventions of interest. This provides a more inclusive approach than pairwise meta-analysis, since all pairwise comparisons of interventions can be examined (Melendez-Torres *et al.*, 2015). If each combination of components and delivery method is considered a separate intervention, then NMA could be used to simultaneously compare the different interventions. However, NMA requires that the comparisons made by the RCTs form a connected network, in other words that there is a path of comparisons between any two included interventions. This is unlikely to be the case with complex interventions, such as CBT, because there are a large number of component and delivery combinations. Even if such a network is connected, the resulting analysis may lead to imprecise estimates.

Recently, component-level NMA regression methods have been developed to allow estimation of the additive contribution of components and/or combinations of components of complex interventions – such as CBT interventions – while fully respecting the randomized structure of the evidence (Welton *et al.*, 2009). This approach allows meaningful conclusions on effectiveness of components of complex interventions, whilst overcoming issues with connected networks and low precision with standard NMA. The use of component-level NMA in psychological interventions has been previously illustrated (Welton *et al.*, 2009; Cooper *et al.*, 2012; Caldwell and Welton, 2016) and has the potential to address specific research questions as to what aspects of complex interventions are effective.

In this study, we performed a comprehensive systematic review of RCTs of adult outpatients with depression where the effectiveness of one or more CBT interventions was examined. We aimed to compare the effectiveness of different types of therapy, different components and combinations of components and aspects of

delivery used in CBT interventions. We pooled study results using NMA and component-level NMA.

## Methods

### Study eligibility and selection

An extended description of the methods of this review is available in the published protocol (Davies *et al.*, 2018). Eligible studies were randomised controlled trials (RCT) including adults ( $\geq 18$  years) with a primary diagnosis of depression, in which the effectiveness of a CBT intervention during an acute phase of depression had been compared to treatment-as-usual (TAU), no treatment, wait list, psychological/attention placebo, and/or another CBT intervention. We considered CBT in its broadest sense as a family of related therapies. TAU definitions showed substantial variation across studies (a table with the verbatim descriptions of TAU across studies is provided in Web Appendix 2). In order to fully represent the broad spectrum of severity of depressive symptoms encountered in outpatient settings, we included both studies using standardised diagnostic criteria (DSM-III, DSM-III-R, DSM-IV-TR, DSM-5 or ICD-10) and those using a validated depression symptom questionnaire to identify depression based on a recognised threshold. We excluded studies focused on other disorders, studies involving inpatients, and articles written in languages other than English.

The primary outcome was depression score measured on any scale, with higher scores indicating more depressive symptoms. Our primary analyses focused on short-term effects, using the earliest measure after end of the intervention. We were also interested in mid-term effects (follow-up between 3 and 12 months after end of intervention) and long-term effects (beyond 12 months).

Secondary outcomes included outcomes designed to measure quality of life (with higher scores indicating better quality of life), remission, response, and attrition. For remission the definitions articulated in the primary studies were included. Response was defined as a decrease in depression scores of at least 50% from baseline to follow-up. Attrition related to the intervention phase and was included as an indicator of (inter alia) intervention acceptability.

### Information sources

We searched MEDLINE (1950-), EMBASE, (1974-), PsycINFO (1967-) and the Cochrane Central Register of Controlled trials (CENTRAL) via the specialised register of the Cochrane Common Mental Disorders Group (CCMD-CTR) to 10 June 2016. This register contains over 40 000 reports of RCTs for common mental disorders (see Web Appendix 1 for further details). For the purpose of this network meta-analysis, we included studies identified from four separate searches of the CCMD-CTR, for a suite of Cochrane reviews (Hunot *et al.*, 2010, 2013; Churchill *et al.*, 2013). Each search used a sensitive list of terms for intervention. We did not apply any restrictions on date, language or publication status to the searches. Supplementary searches were conducted for multi-media *v.* face-to-face CBT and complemented with additional searches to ensure that all relevant psychological and control interventions had been included were also conducted. Details of the CCMD-CTR search strategy are reported in Web Appendix 1.

### Data collection and assessment of risk of bias

Two reviewers independently screened titles and abstracts and extracted data from the included studies. Authors of published

studies, protocols, and trial register entries were contacted for additional information when necessary. Risk of bias was assessed by two reviewers independently using the Cochrane risk of bias tool (Higgins *et al.*, 2011).

We included CBT interventions implemented with any combination of content components and delivered in any format. CBT interventions were classified by mode of delivery as either face-to-face CBT, multimedia CBT, or hybrid CBT (defined as multimedia CBT with one or more face-to-face sessions). We also recorded the number and average length of sessions. We defined multimedia CBT as any standardised CBT approach delivered using one, or a combination of, the following: self-help books, audio/video recordings, telephone, computer programmes (both online and desktop), apps, e-mail, or text messages. Web Appendix 2 gives the coding of intervention delivery components that we extracted, based on components commonly found in CBT interventions (Cuijpers and Kleiboer, 2017). The content components were derived using a method adapted from other reviews involving qualitative assessment of the intervention information provided in the trial reports (Faggiano *et al.*, 2008; Hetrick *et al.*, 2015), with reference to the UCL competences framework (University College London, 2018) and the Cognitive Therapy Rating Scale (Blackburn *et al.*, 2001). Potential components were first discussed with the steering group of this project – this group included psychologists, psychiatrists and academic researchers with expertise in CBT. These components were then piloted on the published literature and refined iteratively, in discussion with the author team.

### Data synthesis and statistical analysis

We constructed network plots to illustrate which interventions had been compared within RCTs for each of the outcomes and time periods of interest, with node size and line thickness proportional to the number of patients contributing to each intervention and intervention comparison, respectively.

For continuous outcomes (depression and quality of life scores), we adopted a complete case analysis approach for the change from baseline to follow-up, assumed to follow a Normal likelihood. Due to the different measurement scales used across studies, we pooled results on a standardised scale, summarised as a standardised difference in mean change (sDIMC). This index compares the mean change from baseline to follow-up between two groups in standardised units (Rubio-Aparicio *et al.*, 2018), and is interpreted in the same way as a standardised mean difference. For studies that do not report mean change from baseline, we derived this from the baseline and follow-up scores where the standard error is estimated by assuming a correlation between baseline and follow-up scores. We estimated the correlation between baseline and follow-up scores from studies that report baseline, follow-up and change from baseline summaries, which gave an average value of 0.7. We used this value for studies that only reported baseline and follow-up scores.

For binary outcomes, we used intention-to-treat results (where available). We assumed a binomial likelihood, where the probability of the outcome is modelled on the log-odds scale, giving pooled intervention effects as log odd ratios, which we present as odds ratios (ORs) to facilitate interpretation of our findings. Although we assumed that participants lost to follow-up did not experience the event of interest in our main analyses, we also ran sensitivity analyses assuming the ‘best case scenario’

where all participants lost to follow-up experienced remission/response.

For each outcome we conducted NMAs and component-level NMAs to pool all evidence in the network. We considered models with increasing levels of detail to define interventions in the NMAs, namely: (1) *Therapy Effects Model*, where comparisons were made between TAU, no treatment, wait list, psychological/attention placebo, face-to-face CBT, hybrid CBT, and multimedia CBT; (2) *Main Effects Model*, in which the previous approach was extended to examine the effect of each individual component of CBT interventions, assumed to be additive, in a network meta-regression model; and (3) *Full Interaction Model*, in which each delivery format and combination of components was considered as a separate intervention (Welton *et al.*, 2009). All results are reported relative to TAU as the reference intervention but estimates between any pair of interventions can be obtained. Additional details about the NMA models are provided in Web Appendix 3.

We pre-specified (Davies *et al.*, 2018) characteristics of intervention delivery, including delivery format (group *v.* individual), intensity (defined as the product of the number of sessions and the average length of each session divided by 100), patient-therapist interaction (one-way *v.* two-way), tailored *v.* untailored CBT interventions, and format of multimedia CBT interventions. Where there was sufficient evidence to fit the models, we explored the influence of these potential effect modifiers using network meta-regression. We also performed sensitivity analyses excluding studies at high risk of bias on domains other than blinding and explored small-sample bias by including the inverse standard errors as a covariate using network meta-regression.

The NMAs were implemented in a Bayesian framework using OpenBUGS software (version 3.2.3). We assessed convergence based on two chains, through examination of Brooks-Gelman-Rubin diagnostic plots and history plots. All models presented achieved a satisfactory level of convergence. Model fit was assessed by examining the posterior mean residual deviance and deviance information criterion (DIC). We performed a weighted integration of the evidence through fitting both fixed and random effects network meta-analysis models; however, we only present the random effects model due to severe lack of fit for fixed effect models (see Web Appendix 6). Model fit was satisfactory for the random-effects models presented. Inconsistency was assessed by comparing the DICs of our primary analyses (based on NMA models that assume consistency between direct and indirect evidence) and the DICs yielded by inconsistency models (which provide effect estimates based on direct evidence only).

## Results

### Included studies

We retrieved 91 studies that met our inclusion criteria and reported results on at least one of the relevant outcomes of the review. Figure 1 presents a flow chart summarising the search process and results. A table of characteristics of included studies is provided in Web Appendix 4.

### Definition of interventions

The most common comparators across studies were TAU (31 arms) and wait list (35 arms). We classified 10 interventions as attention placebo and 2 interventions as psychological placebo



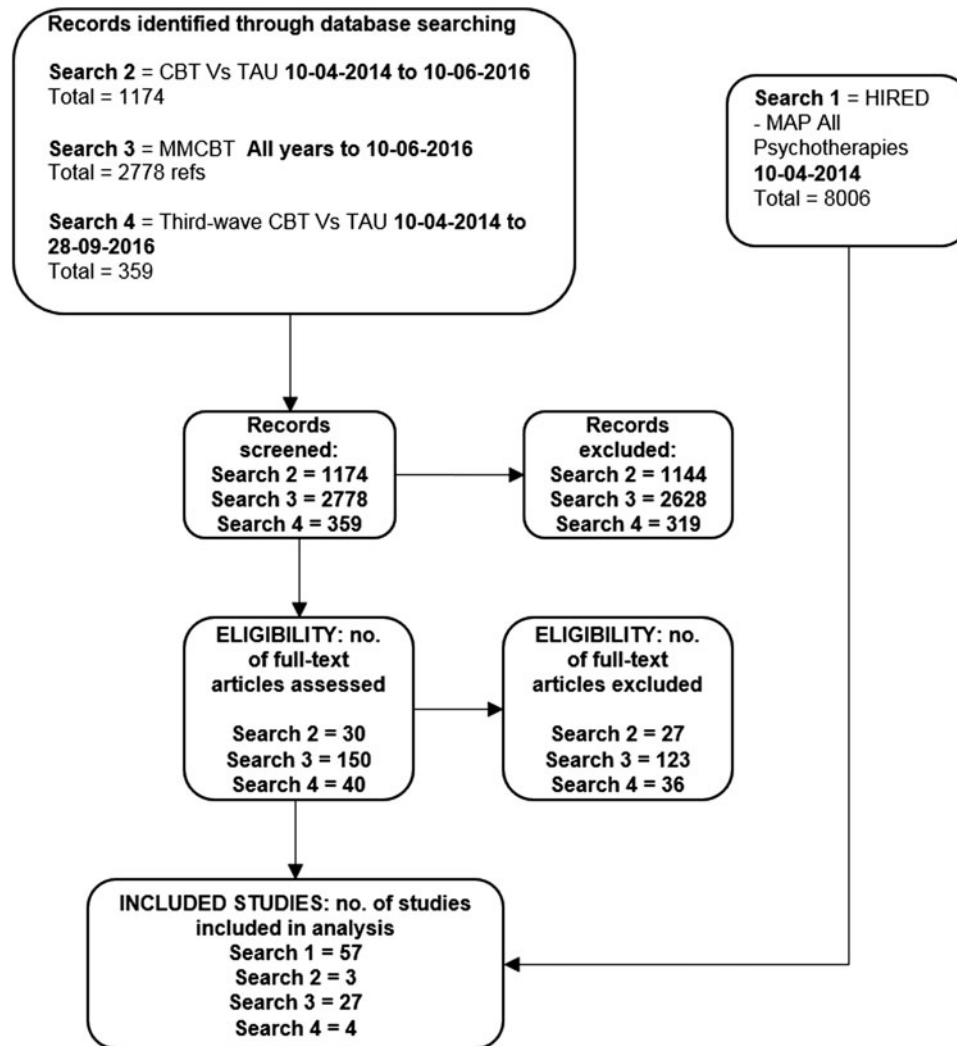


Fig. 1. Flow chart of the systematic review process.

and merged them into a single category. Moreover, ‘no treatment’ was provided in 7 arms across the included studies.

Regarding CBT interventions, we found 86 arms that implemented face-to-face CBT, 7 arms for hybrid CBT, and 29 arms for multimedia CBT. Moreover, we identified the following components across the included studies: cognitive techniques (87 arms), behavioural activation (80 arms), psychoeducation (40 arms), homework (35 arms), problem solving (29 arms), social skills training (29 arms), relaxation (27 arms), goal setting (14 arms), final session (ability to end therapy in a planned manner and to plan for long-term maintenance of gains after treatment ends, 13 arms), mindfulness CBT (5 arms) and acceptance and commitment therapy (ACT, 5 arms). Most CBT interventions included multiple components in their definition. Web Appendix 2 provides a description of other intervention features we extracted including aspects of the treatment sessions, delivery method and multimedia methods.

#### Risk of bias in included studies

Most studies were judged to be at a low or unclear risk of bias for random sequence generation, allocation concealment, attrition

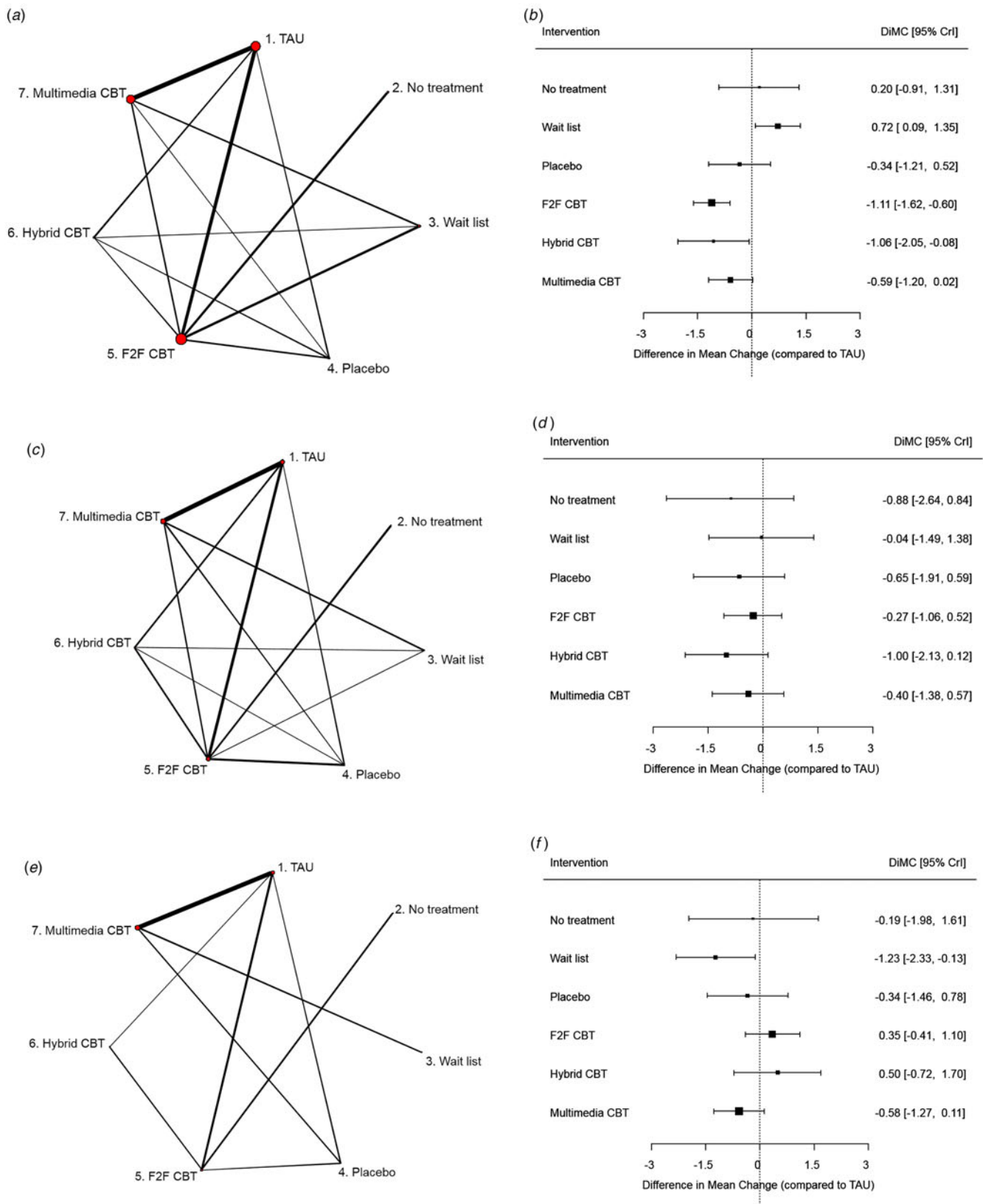
bias and selective reporting. Given the nature of the interventions, most studies were judged to be at high risk of bias for blinding of participants and personnel and for blinding of outcome assessment. A more detailed description of risk of bias assessments is provided in Web Appendix 5 and Web Fig. 1.

#### Therapy-level NMA results

##### Change in depression scores

Change in depression scores at short term was the most widely reported outcome (76 studies, 6973 patients). The structure of the network and the NMA results for this outcome are shown in Figs 2a and 2b. There was evidence of a smaller decrease in depression scores for patients allocated to wait list, compared with patients who received TAU (sDIMC = 0.72, 95% CrI 0.09 to 1.35). All CBT interventions yielded larger decreases in depression score compared with TAU, with the biggest effect yielded by face-to-face CBT (sDIMC = -1.11, 95% CrI -1.62 to -0.60) and more uncertainty for hybrid CBT (sDIMC = -1.06, 95% CrI -2.05 to -0.08) and multimedia CBT (-0.59, -1.20 to 0.02).

Change in depression scores at mid-term was reported in 29 studies including 3441 patients (Figs 2c and 2d). There was no



**Fig. 2.** Network plots (panels a–c) and NMA results (panels d–f) for depression at short term, depression at mid term, and quality of life at short term (Therapy Effects model), respectively. Intervention effects are standardised differences in mean change from baseline, relative to TAU. (a) Network plot for depression at short term. (b) NMA results for depression at short term. (c) Network plot for depression at mid term. (d) NMA results for depression at mid term. (e) Network plot for quality of life at short term. (f) NMA results for quality of life at short term. TAU, treatment as usual; F2F CBT, face-to-face cognitive behavioural therapy; sDiMC, standardised difference in mean change; CrI, credible interval.

evidence to suggest that any of the CBT therapies differed from TAU in depression scores at mid-term, although results suggest that hybrid CBT led to a larger reduction in depression scores compared with TAU (sDIMC =  $-1.00$ ,  $-2.13$  to  $0.12$ ). However, the number of studies was not large enough to obtain precise effect estimates.

Results based on a follow-up period over 12 months were seldom reported across the included studies, which precluded examination of long-term effects.

#### *Change in quality of life scores*

Change in quality of life scores at short term was reported in 15 studies including 2425 patients (Figs 2e and 2f). Intervals around effect estimates are wide as a consequence of the small number of studies contributing to the analysis. Nonetheless, there was evidence of a reduced increase in quality of life scores for wait list compared with TAU (sDIMC =  $-1.23$ , 95% CrI  $-2.33$  to  $-0.13$ ), and results also suggest a reduced increase in quality of life scores for multimedia CBT compared with TAU (sDIMC =  $-0.58$ , 95% CrI  $-1.27$  to  $0.11$ ). Insufficient data were available to produce estimates for mid- and long-term outcomes.

#### *Remission, response, and attrition*

The network plot and forest plot of NMA results for remission are displayed in Figs 3a and 3b, respectively. Results are based on 38 studies including 3391 patients and provide evidence that wait list (OR 0.33, 95% CrI 0.11 to 1.02) and placebo (OR 0.27, 95% CrI 0.07 to 1.03) have lower remission rates than TAU. The ORs for CBT interventions suggest higher remission rates compared to TAU, although the credible intervals are wide and all of them include the null.

Response – according to our definition – was only reported in 15 studies with a total of 1144 patients, and none of these studies included a ‘no treatment’ arm (Fig. 3c). Results show wide intervals for all treatment effect estimates (Fig. 3d), with the most precise estimate yielded by face-to-face CBT and suggesting that this therapy might increase the probability of response to treatment compared to TAU (OR 2.55, 95% CrI 0.77 to 9.51).

Attrition was reported in 75 studies including 8075 patients. The structure of the network and NMA results are shown in Figs 3e and 3f. We found no evidence of a clear difference in attrition rates among interventions.

We only present results at short term, as remission and response were not widely reported at longer follow-up periods and attrition is only meaningful as an indicator of treatment acceptability if it occurs during the intervention phase.

#### *Component-level NMA results*

For each outcome we fitted a main effects component-level NMA model where we estimated the specific effect each component of CBT adds to the ‘average’ CBT effect. We were unable to include mindfulness CBT and ACT components in this analysis, as they were only included in five studies each.

Results from the Main Effects model (where component effects are assumed additive) for change in standardised depression scores at short term are displayed in Fig. 4. The top side of this figure presents ‘main effects’, which are similar to the therapy effects for the comparators with the addition of an ‘average’ CBT effect, whereas the bottom of the figure estimates the effect modification on the overall CBT effect that can be attributed to interventions with a multimedia component, interventions with

cognitive techniques, and so on. The top half of Fig. 4 shows that on average, there was strong evidence of a larger decrease in depression scores in CBT interventions yielded a larger decrease in depression scores compared to TAU (sDIMC =  $-1.77$ , 95%  $-2.57$  to  $-1.01$ ), and an increase for wait list compared to TAU (sDIMC =  $0.75$ ,  $0.09$  to  $1.41$ ). Regarding effect modifiers, there was no evidence of a difference between multimedia and face-to-face CBT interventions (sDIMC =  $0.36$ ,  $-0.24$  to  $0.96$ ). Moreover, results suggest that interventions that reported having included a behavioural activation component yielded a smaller decrease in depression scores compared to other CBT interventions (sDIMC =  $0.54$ ,  $-0.09$  to  $1.16$ ). Similar results were found for other outcomes (Web Appendix 6).

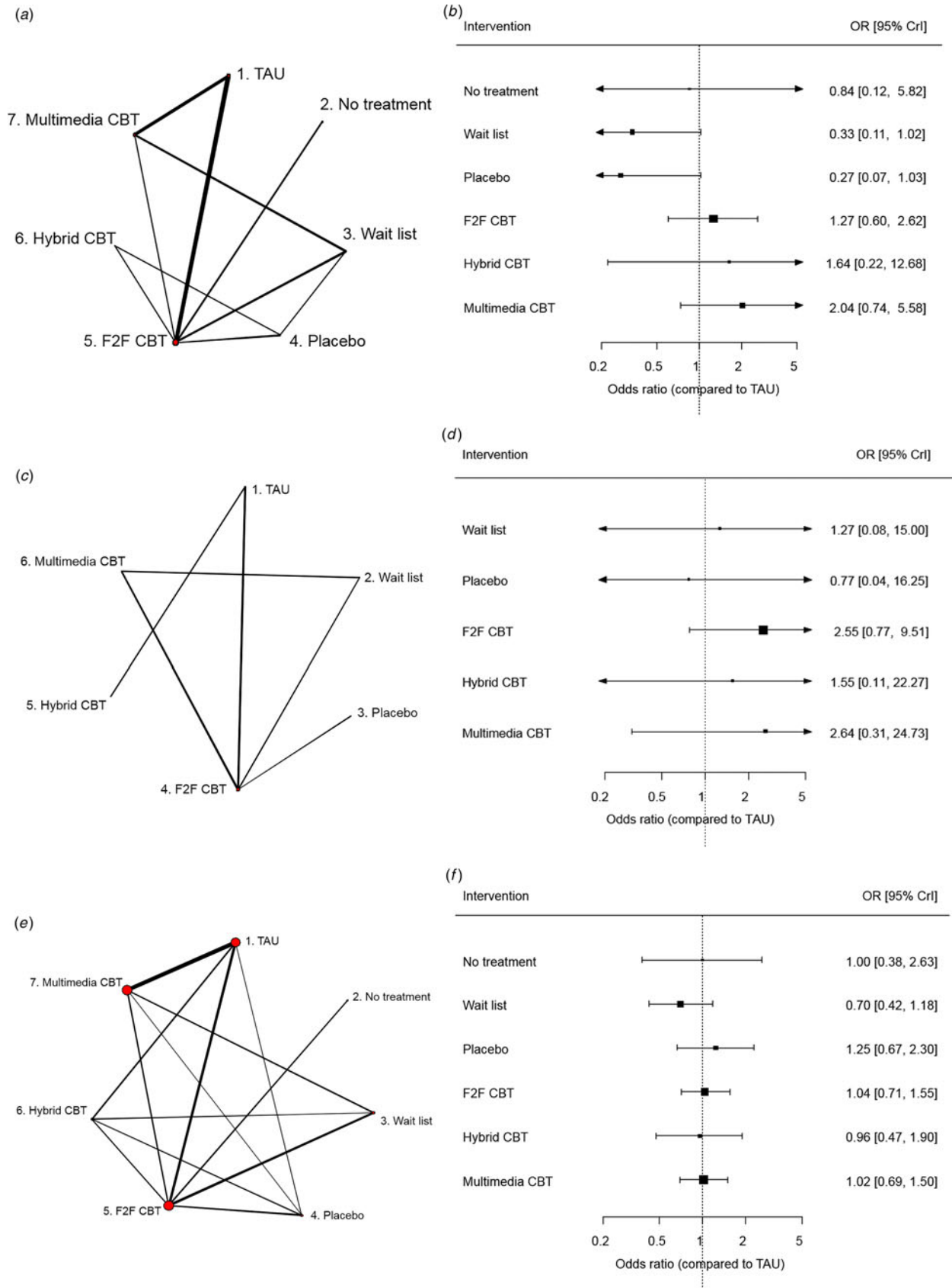
#### *Full interaction component-level NMA model*

We relaxed the assumption of additive component effects by fitting a Full Interaction model, where each combination of content components and delivery mode was considered as a separate CBT intervention. Using the information reported in the primary studies, we were unable to find any combinations of content components that were reported commonly enough to provide precise estimates of treatment effects. Instead, we defined a substantial number of CBT interventions, most of them only implemented only in one study, which yielded very imprecise estimates for most intervention effects. Results for change in depression scores at short term are presented in Web Appendix 6, and results for other outcomes are available on request.

#### *Additional analyses*

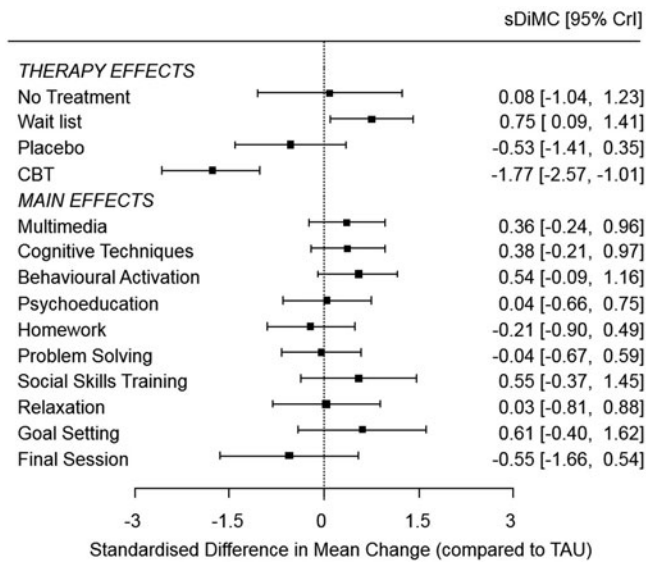
Based on model fit statistics, the therapy effects model presented above gave the best balance between model fit and complexity (according to the DIC). We therefore only explored further effect modifiers in relation to the therapy effects model. Regarding effect modifiers, results suggest that more intense face-to-face CBT interventions might be more effective in decreasing depressive symptoms ( $\beta = -0.072$ , 95% CrI  $-0.168$  to  $0.023$ ), whereas for hybrid and multimedia CBT interventions effect modification for intensity was estimated to be close to 0 although with high levels of uncertainty ( $\beta = -0.010$ ,  $-0.229$  to  $0.210$ ). We found no evidence of effect modification for delivery method (group *v.* individual) neither for face-to-face ( $\beta = -0.025$ ,  $-0.111$  to  $0.065$ ) nor for hybrid and multimedia interventions ( $\beta = -0.043$ ,  $-0.258$  to  $0.175$ ). The influence of other intervention characteristics could not be examined due to lack of comparative evidence – the vast majority of CBT interventions were tailored and included two-way interactions, and the format of multimedia interventions was too heterogeneous across studies to be examined as a factor. We also ran additional analyses excluding studies assessed at high risk of bias for random sequence generation, attrition and/or selective reporting, and found the results were robust to this.

Regarding other types of bias, our analyses assuming a ‘best case scenario’ for missing data in binary outcomes yielded similar conclusions as the main analyses for remission, although there was no evidence of a difference between placebo and TAU (OR 1.21, 95% CrI 0.48 to 3.02). For response, there was evidence of a higher response rate for face-to-face CBT (OR 2.53, 1.46 to 4.68) and weak evidence (e.g. 95% CrI includes the null) of a higher response rate for multimedia CBT (OR 2.11, 0.96 to 5.30), compared to TAU (Web Appendix 6). Moreover, we found evidence of an association between the inverse standard



**Fig. 3.** Network plots (panels a–c) and NMA results (panels d–f) for remission, response, and attrition at short term (Therapy Effects model), respectively. Intervention effects are odds ratios relative to TAU. (a) Network plot for remission at short term. (b) NMA results for remission at short term. (c) Network plot for response at short term. (d) NMA results for response at short term. (e) Network plot for attrition at short term. (f) NMA results for attrition at short term. TAU, treatment as usual; F2F CBT, face-to-face cognitive behavioural therapy; OR, odds ratio; CrI, credible interval.





**Fig. 4.** Component-level NMA results for depression at short term (Main Effects model). Therapy effects for No treatment, Wait list, Placebo, and CBT are standardised differences in mean change from baseline, relative to TAU. Main effects for the CBT effect are interpreted as the additional effects for CBT interventions that contain that effect modifier (adjusted for all other effect modifiers). TAU, treatment as usual; CBT, cognitive behavioural therapy; sDiMC, standardised difference in mean change; CrI, credible interval.

errors and the effect estimates for depression at short term ( $\beta = 0.04, 0.02$  to  $0.07$ ), suggesting that larger studies report changes in depressive symptoms that are closer to the null. This implies that the evidence we reviewed might be affected by small-sample bias.

We compared the model fit of consistency and inconsistency models (Web Appendix 6) and found no evidence of inconsistency between direct and indirect evidence, with the exception of the response outcome. However, the resulting intervention effect estimates displayed in Fig. 3d were very similar under both models.

We also repeated our analyses restricting to studies reporting depression scores using the Beck Depression Inventory (BDI), which was reported in 65 studies with a total of 4517 patients. Results at short and mid-term were comparable to those using standardised scores across scales (Web Appendix 6), although at mid-term there was stronger evidence (e.g. values within the 95% CrI were further away from the null) of an effect of CBT interventions when restricting to studies reporting the BDI.

## Discussion

CBT interventions are complex and currently there is little understanding about which components and/or combinations of components are the most effective in reducing adult depression (Vázquez *et al.*, 2015). Several novel approaches have been proposed for the synthesis of evidence on complex interventions (Higgins *et al.*, 2019). In this review we aimed to tackle this gap by performing a qualitative assessment of the included studies to identify the content components involved in each CBT intervention, and then undertake component-level NMA to examine the effectiveness of specific components and combinations of components.

We conducted a comprehensive systematic review and component-level NMA of RCTs examining the effectiveness of CBT interventions for depressed adults. We included a wide range of CBT interventions, differing in the content components and/or delivery method, and examined a number of relevant outcomes (Rush *et al.*, 2006). We found strong evidence that CBT interventions yielded a larger decrease in depression scores compared to TAU at short term. Results for other outcomes, based on smaller numbers of studies, were unclear. We found little evidence of differential effectiveness of face-to-face *v.* multimedia CBT interventions, and no strong evidence of specific effects of any content components or combinations of components. There was substantial uncertainty around effect estimates for most outcomes and intervention comparisons including attention/psychological placebo, and some differences in treatment effect for which we found weak evidence might be due to chance. Nonetheless, compared with TAU, wait list interventions yielded a smaller decrease in depression scores, smaller increase in quality of life scores and lower remission rates.

The overall beneficial effect of CBT interventions in improving depressive symptoms is not surprising and has been reported before (Butler *et al.*, 2006; Oei and Dingle, 2008; Richards and Richardson, 2012; Cuijpers and Gentili, 2017). Furthermore, our findings are in line with previous studies where multimedia CBT was found to be similarly effective as face-to-face CBT (Cuijpers *et al.*, 2010), although we emphasise the substantial uncertainty in the treatment effect estimates showing no difference between face-to-face and multimedia CBT. Moreover, it has been claimed that psychological interventions yield long-lasting effects (Cuijpers and Gentili, 2017). In this respect, we found some evidence that mid-term results for hybrid and multimedia interventions are similar to short term (albeit wide intervals), whereas short-term face-to-face effects were not maintained to mid-term.

## Limitations

Several limitations need to be acknowledged, which mostly represent common issues faced by systematic reviews in this field and highlight the need for a cautious interpretation of our results. One major problem we found was inconsistent reporting of interventions, with some studies providing sufficient detail about the CBT intervention/s they examined to enable coding of components, while many others only included a vague description often supported by citations to theoretical references (e.g. CBT treatment manuals) or previous applications in a similar context. Thus, our analyses of the specific contribution of different components were limited by the description of the interventions provided in the articles, with the potential risks that some interventions included components that were not reported and that some of the reported components were not received by all patients in the study. The importance of identifying and reporting core components is widely recognised in the field of complex interventions (Durlak and DuPre, 2008; Hoffmann *et al.*, 2014), and we believe that a more consistent and complete reporting of CBT interventions will facilitate the replicability and improve the understanding of the differential effectiveness of these interventions for the treatment of adult depression. Specifically, we call for a wide agreement between clinicians and researchers on the definition of the core content components that might be involved in CBT interventions as a first step, followed by a commitment from the scientific community to refer to this consensus

when reporting CBT interventions in primary studies. In this vein, the UCL framework (University College London, 2018) could be a useful starting point.

Relatedly, transparent reporting of TAU in RCTs is often sub-optimal and, as such, it is typically a heterogeneous grouping in all reviews. TAU is often used as a comparator in RCTs examining one or several CBT interventions, and unlike other reviews in this field, in our systematic review we separated TAU from other comparators to reduce heterogeneity. However, TAU definitions showed substantial variation within and across studies and the intensity of TAU was often not reported, and this potentially introduced additional uncertainty in the estimation of intervention effects. A table with the verbatim descriptions of TAU across studies is provided in Web Appendix 2.

Moreover, most studies included in our systematic review only reported results based on short follow-up periods, which limited our analyses of mid-term and long-term effects, and the number of studies was too small for most outcomes to get precise estimates of intervention effects. Further simulation work is warranted to explore the data requirements, particularly when the aim is to estimate interaction effects in component-level NMA. Furthermore, remission was defined in different ways across studies, which possibly introduced additional heterogeneity in the analysis of this outcome. Conversely, we only analysed response rates for studies that reported it according to our definition, but that yielded a small number of studies.

Last, our definition of 'face-to-face' treatments included therapy delivered on an individual basis or in groups. Whilst there has been some debate in the literature regarding the effectiveness of group *v.* individual CBT, evidence from earlier reviews concluded that, on balance, outcomes are similar for these two formats (Tucker and Oei, 2007; Oei and Dingle, 2008) supporting our decision to combine data accordingly. There was substantial heterogeneity in terms of the nature of the interventions, in particular the multimedia interventions. Whilst others have found that supported computerised interventions are more effective than unguided treatments (Richards and Richardson, 2012), little is known regarding the optimum form and nature of this support and hence given the extent of heterogeneity not only in the amount of support but also the modality of the intervention and combinations of delivery, it was not possible to explore this further.

### Implications for future research and clinical practice

Our results have several implications for research and clinical practice. Technology is increasingly used in the context of CBT interventions for depression, and our study found that multimedia and hybrid CBT might be as effective as face-to-face CBT, although results need to be interpreted cautiously due to substantial uncertainty and potential small-sample biases. The effectiveness of specific combinations of content components and multimedia delivery formats remain unclear. Although this uncertainty could be explored in future trials/dismantling studies, prohibitively large samples are likely to be required to have sufficient power to detect the small differences expected (Mohr *et al.*, 2017). Value of information analyses (Welton *et al.*, 2012) are recommended to assess whether such a trial would represent value for money. Regarding specific content components for CBT interventions, it will be important that there is a full description of techniques consistent with the protocol to enable future

work to build on this. It should also be important to determine the optimal number and length of sessions in order to optimize the use of health resources, and to include longer follow-up periods. Last, our results raise concerns on the use of wait list groups as comparators and suggest that other alternatives should be considered.

Throughout this paper we acknowledge that CBT interventions are complex. Our review addressed some of the features of this complexity (Grant and Calderbank-Batista, 2013; Melendez-Torres *et al.*, 2015), but other qualitative aspects should be considered to maximize treatment adherence and enhance treatment effectiveness for specific patient profiles. The importance of a clear description of both CBT interventions and comparators has been remarked previously (Mansell, 2008), and cannot be emphasised enough. Our study illustrates that CBT interventions are suitable for the treatment of adult depression as a class, but that further research and improvements in reporting of intervention descriptions are needed in order to determine which particular aspects characterise interventions that lead to the best outcomes for most patients.

**Author ORCIDs.**  José A López-López, 0000-0002-9655-3616

**Supplementary material.** The supplementary material for this article can be found at <https://doi.org/10.1017/S003329171900120X>.

**Acknowledgements.** This report is independent research funded by the National Institute for Health Research (Programme Grants for Applied Research, Integrated therapist and online CBT for depression in primary care, RP-PG-0514-20012). The views expressed in this publication are those of the author(s) and not necessarily those of the NHS, the National Institute for Health Research or the Department of Health and Social Care. This study was also supported by the NIHR Biomedical Research Centre at the University Hospitals Bristol NHS Foundation Trust and the University of Bristol. The study was also supported by the MRC ConDuCT-II Hub for Trials Methodology Research. This study was conducted in collaboration with the Bristol Randomised Trials Collaboration (BRTC), a UKCRC Registered Clinical Trials Unit (CTU) in receipt of National Institute for Health Research CTU support funding. This study was also supported by The Centre for the Development and Evaluation of Complex Interventions for Public Health Improvement (DECIPHer), a UKCRC Public Health Research Centre of Excellence. Joint funding (MR/KO232331/1) from the British Heart Foundation, Cancer Research UK, Economic and Social Research Council, Medical Research Council, the Welsh Government and the Wellcome Trust, under the auspices of the UK Clinical Research Collaboration, is gratefully acknowledged.

**Author contributions.** NW, DSK, RC, NJW, DMC, and GL conceived the project. SRD, DMC, SD, DT and RC selected articles for inclusion. SRD and AT extracted data and assessed risk of bias. JALL, NJW, NW, DSK, QW, JL and TJP selected results for inclusion. NJW, JALL and DMC planned the statistical analyses. JALL performed the NMAs. DSK and GL provided clinical expertise. JALL, NJW, NW, DMC, SD and SRD wrote the first draft of the paper and all authors revised it critically for important intellectual content. All authors have approved this version for publication.

We are also grateful to a number of colleagues who are involved with the INTERACT study as co-applicants but who have not participated in drafting this manuscript: David Coyle, Simon Gilbody, Paul Lanham, Una Macleod, Irwin Nazareth, Steve Parrott, Roz Shafran, Katrina Turner, Catherine Wevill and Chris Williams.

**Conflict of interest.** NJW is PI on an MRC grant in collaboration with Pfizer Ltd. Pfizer part fund a junior researcher. The project is purely methodological using historical pain relief data unrelated to this review.

**Ethical standards.** Not applicable. This is a review of published research, where no primary data were used.

## References

- Beck AT (2005) The current state of cognitive therapy: a 40-year retrospective. *Archives of General Psychiatry* **62**, 953–959.
- Blackburn I, James I, Milne D, Baker C, Standart S, Garland A and Reichelt F (2001) The revised cognitive therapy scale (CTS-R): psychometric properties. *Behavioural and Cognitive Psychotherapy* **29**, 431–446.
- Bridges S (2014) Mental health problems. Health Survey from England, Leeds, England. Available at <http://healthsurvey.hscic.gov.uk/media/37739/HSE2014-Ch2-Mental-health-problems.pdf>.
- Butler AC, Chapman JE, Forman EM and Beck AT (2006) The empirical status of cognitive-behavioral therapy: a review of meta-analyses. *Clinical Psychology Review* **26**, 17–31.
- Button KS, Wiles NJ, Lewis G, Peters T and Kessler D (2012) Factors associated with differential response to online cognitive behavioural therapy. *Social Psychiatry and Psychiatric Epidemiology* **47**, 827–833.
- Caldwell DM and Welton NJ (2016) Approaches for synthesising complex mental health interventions in meta-analysis. *Evidence-Based Mental Health* **19**, 16–21.
- Caldwell DM, Ades AE and Higgins JPT (2005) Simultaneous comparison of multiple treatments: combining direct and indirect evidence. *British Medical Journal* **331**, 897–900.
- Churchill R, Honot V, Corney R, Knapp M, Mcguire H, Tylee A and Wessely S (2002) A systematic review of controlled trials of the effectiveness and cost-effectiveness of brief psychological treatments for depression. *Health Technology Assessment* **5**(35).
- Churchill R, Moore THM, Furukawa TA, Caldwell DM, Davies P, Jones H, Shinohara K, Imai H, Lewis G and Hunot V (2013) ‘Third wave’ cognitive and behavioural therapies versus treatment as usual for depression. *Cochrane Database of Systematic Reviews* **10**, CD008705.
- Cooper NJ, Kendrick D, Achana F, Dhiman P, He Z, Wynn P, Le Cozannet E, Saramago P and Sutton AJ (2012) Network meta-analysis to evaluate the effectiveness of interventions to increase the uptake of smoke alarms. *Epidemiologic Reviews* **34**, 32–45.
- Cuijpers P and Gentili C (2017) Psychological treatments are as effective as pharmacotherapies in the treatment of adult depression: a summary from Randomized Clinical Trials and neuroscience evidence. *Research in Psychotherapy: Psychopathology, Process and Outcome* **20**, 147–152.
- Cuijpers P and Kleiboe AM (2017) Self-directed approaches to the treatment of depression. In Derubeis RJ and Strunk DR (eds), *The Oxford Handbook of Mood Disorders*. Oxford, England: Oxford University Press, pp. 469–477.
- Cuijpers P, Donker T, Van Straten A, Li J and Andersson G (2010) Is guided self-help as effective as face-to-face psychotherapy for depression and anxiety disorders? A systematic review and meta-analysis of comparative outcome studies. *Psychological Medicine* **40**, 1943–1957.
- Davies SR, Caldwell DM, López-López JA, Dawson S, Wiles N, Kessler D, Welton NJ and Churchill R (2018) The process and delivery of cognitive behavioural therapy (CBT) for depression in adults: a network meta-analysis. *Cochrane Database of Systematic Reviews* **2018**, CD013140.
- Dias S, Sutton A, Ades A and Welton N (2013) Evidence synthesis for decision making 2: a generalized linear modeling framework for pairwise and network meta-analysis of randomized controlled trials. *Medical Decision Making* **33**, 607–617.
- Durlak J and Dupre E (2008) Implementation matters: a review of research on the influence of implementation on program outcomes and the factors affecting implementation. *American Journal of Community Psychology* **41**, 327–350.
- Faggiano F, Vigna-Taglianti F, Versino E, Zambon A, Borraccino A and Lemma P (2008) School-based prevention for illicit drugs use: a systematic review. *Preventive Medicine* **46**, 385–396.
- Grant ES and Calderbank-Batista T (2013) Network meta-analysis for complex social interventions: problems and potential. *Journal of the Society for Social Work and Research* **4**, 406–420.
- Hetrick S, Bailey A, Rice S, Simmons M, Mckenzie J, Montague A and Parter A (2015) A qualitative analysis of the descriptions of cognitive behavioural therapy (CBT) tested in clinical trials of depressed young people. *Depression and Anxiety* **4**, 172.
- Higgins JPT and Whitehead A (1996) Borrowing strength from external trials in a meta-analysis. *Statistics in Medicine* **15**, 2733–2749.
- Higgins JPT, Altman DG, Gotzsche PC, Juni P, Moher D, Oxman AD, Savovic J, Schulz KF, Weeks L and Sterne JAC (2011) The Cochrane Collaboration’s tool for assessing risk of bias in randomised trials. *British Medical Journal* **343**, d5928.
- Higgins JPT, López-López JA, Becker BJ, Davies SR, Grimshaw JM, Rehfuess EA, Welton NJ, Dawson S, Easterbrook PJ, Moore THM, Petticrew M, Thomas J and Caldwell DM (2019). Synthesizing quantitative evidence: advancing insights from systematic reviews of complex health interventions. *BMJ Global Health* **4**, e000858.
- Hoffmann T, Glasziou P, Milne R, Moher D, Barbour V, Johnston M, Lamb S, Dixon-Woods D and Wyatt J (2014) Better reporting of interventions: template for intervention description and replication (TIDieR) checklist and guide. *British Medical Journal* **348**, g1687.
- Hunot V, Moore THM, Caldwell D, Davies P, Jones H, Furukawa TA, Lewis G and Churchill R (2010) Cognitive behavioural therapies versus treatment as usual for depression. *Cochrane Database of Systematic Reviews* **9**, CD008699.
- Hunot V, Moore THM, Caldwell DM, Furukawa TA, Davies P, Jones H, Honyashiki M, Chen P, Lewis G and Churchill R (2013) ‘Third wave’ cognitive and behavioural therapies versus other psychological therapies for depression. *Cochrane Database of Systematic Reviews* **10**, CD008704.
- Jacobson NS, Dobson KS, Truax PA, Addis ME, Koerner KG, Jackie K, Gortner E and Prince SE (1996) A component analysis of cognitive-behavioral treatment for depression. *Journal of Consulting and Clinical Psychology* **64**, 295–304.
- Lepping P, Whittington R, Sambhi RS, Lane S, Poole R, Leucht S, Cuijpers P, McCabe R and Waheed W (2017) Clinical relevance of findings in trials of CBT for depression. *European Psychiatry* **45**, 207–211.
- Mansell W (2008) The seven C’s of CBT: a consideration of the future challenges for cognitive behaviour therapy. *Behavioural and Cognitive Psychotherapy* **36**, 641–649.
- Melendez-Torres GJ, Bonell C and Thomas J (2015) Emergent approaches to the meta-analysis of multiple heterogeneous complex interventions. *BMC Medical Research Methodology* **15**, 47.
- Mohr DC, Weingardt KR, Reddy M and Schueller SM (2017) Accelerating digital mental health research from early design and creation to successful implementation and sustainment. *Psychiatric Services* **68**, 427–429.
- National Institute for Clinical Excellence (2009) *Depression in Adults: Recognition and Management*. London, England: National Institute for Clinical Excellence. Available at <https://www.nice.org.uk/guidance/cg90> [Accessed 4 October 2018].
- Oei T and Dingle G (2008) The effectiveness of group cognitive behaviour therapy for bipolar depressive disorders. *Journal of Affective Disorders* **107**, 5–21.
- Richards D and Richardson T (2012) Computer-based psychological treatments for depression: a systematic review and meta-analysis. *Clinical Psychology Review* **32**, 329–342.
- Rubio-Aparicio M, Marín-Martínez F, Sánchez-Meca J and López-López JA (2018) A methodological review of meta-analyses of the effectiveness of clinical psychology treatments. *Behavior Research Methods* **50**, 2057–2073.
- Rush J, Kraemer H, Sackeim HA, Fava M, Trivedi MH, Frank E, Ninan P, Thase ME, Gelenberg AJ, Kupfer DJ, Regier DA, Rosenbaum JF, Ray O and Schatzberg AF (2006) Report by the ACNP task force on response and remission in major depressive disorder. *Neuropsychopharmacology* **31**, 1841–1853.
- Shafan R, Clark DM, Fairburn CG, Arntz A, Barlow DH, Ehlers A, Freeston M, Garety PA, Hollon SD, Ost LG, Salkovskis PM and Williams JMG (2009) Mind the gap: improving the dissemination of CBT. *Behaviour Research and Therapy* **47**, 902–909.
- Thapar A, Collishaw S, Pine DS and Thapar AK (2012) Depression in adolescence. *Lancet* **379**, 1056–1067.
- Tucker M and Oei T (2007) Is group more cost effective than individual cognitive behaviour therapy? The evidence is not solid yet. *Behavioural and Cognitive Psychotherapy* **35**, 77–91.
- University College London (2018) *Competency Frameworks for People with CBT*. London, England: University College London. Available at <http://www.ucl.ac.uk/clinical-psychology/competency-maps/cbt-map.html> (Accessed 4 October 2018).

- Vázquez FL, Torres A, Díaz O, Otero P, Blanco V and Hermida E** (2015) Protocol for a randomized controlled dismantling study of a brief telephonic psychological intervention applied to non-professional caregivers with symptoms of depression. *BMC Psychiatry* **15**, 300.
- Welton NJ, Caldwell DM, Adamopoulos E and Vedhara K** (2009) Mixed treatment comparison meta-analysis of complex interventions: psychological interventions in coronary heart disease. *American Journal of Epidemiology* **169**, 1158–1165.
- Welton N, Sutton A, Cooper N, Abrams K and Ades A** (2012) Expected value of information for research prioritisation and study design. In *Evidence Synthesis for Decision Making in Healthcare*. Chichester: Wiley, pp. 251–269.
- Wiles N, Thomas L, Abel A, Ridgway N, Turner N, Campbell J, Garland A, Hollinghurst S, Jerrom B, Kessler D, Kuyken W, Morrison J, Turner K, Williams C, Peters T and Lewis G** (2012) Cognitive behavioural therapy as an adjunct to pharmacotherapy for primary care based patients with treatment resistant depression: results of the CoBaIT randomised controlled trial. *Lancet* **381**, 375–384.
- World Health Organization** (2018) *Depression*. World Health Organization. Available at <http://www.who.int/mediacentre/factsheets/fs369/en/> (Accessed 4 October 2018).