



This is a repository copy of *Parental care and the evolution of terrestriality in frogs*.

White Rose Research Online URL for this paper:
<http://eprints.whiterose.ac.uk/145190/>

Version: Accepted Version

Article:

Vági, B., Végvári, Z., Liker, A. et al. (2 more authors) (2019) Parental care and the evolution of terrestriality in frogs. *Proceedings of the Royal Society B: Biological Sciences*, 286 (1900). 20182737. ISSN 0962-8452

<https://doi.org/10.1098/rspb.2018.2737>

© 2019 The Author(s). This is an author-produced version of a paper subsequently published in *Proceedings of the Royal Society B: Biological Sciences*. Uploaded in accordance with the publisher's self-archiving policy.

Reuse

Items deposited in White Rose Research Online are protected by copyright, with all rights reserved unless indicated otherwise. They may be downloaded and/or printed for private study, or other acts as permitted by national copyright laws. The publisher or other rights holders may allow further reproduction and re-use of the full text version. This is indicated by the licence information on the White Rose Research Online record for the item.

Takedown

If you consider content in White Rose Research Online to be in breach of UK law, please notify us by emailing eprints@whiterose.ac.uk including the URL of the record and the reason for the withdrawal request.



eprints@whiterose.ac.uk
<https://eprints.whiterose.ac.uk/>

Research

Parental care and the evolution of terrestriality in frogs

Balázs Vági¹, Zsolt Végvári^{2,3}, András Liker⁴, Robert P. Freckleton⁵, Tamás Székely⁶

¹Department of Evolutionary Zoology and Human Biology, University of Debrecen, Debrecen, Hungary

²Department of Conservation Zoology, University of Debrecen, Debrecen, Hungary

³Department Hortobágy National Park Directorate, Debrecen, Hungary

⁴Department of Limnology, University of Pannonia, Veszprém, Hungary,

⁵Department of Animal and Plant Sciences, University of Sheffield, Sheffield, United Kingdom

⁶Milner Centre for Evolution, University of Bath, Bath, United Kingdom

Author for correspondence:

Tamás Székely

T.Szekely@bath.ac.uk

Running title: Comparative analyses of frog care

Subject Category

Evolution

Subject Areas

behaviour, evolution

1 Frogs and toads (Anura) exhibit some of the most diverse parental strategies in vertebrates. Identifying
2 the evolutionary origins of parenting is fundamental to understanding the relationships between sexual
3 selection, social evolution and parental care systems of contemporary Anura. Moreover, parenting has
4 been hypothesized to allow the invasion of terrestrial habitats by the ancestors of terrestrial vertebrates.
5 Using comprehensive phylogenetic analyses of frogs and toads based on data from over 1000 species that
6 represent 46 out of 55 Anura families, we test whether parental care is associated with terrestrial
7 reproduction and several life history traits. Here we show that both the duration of care and offspring
8 protection by males and females have co-evolved with terrestrial reproduction. Sexual size dimorphism is
9 also related to care, since large male size relative to female size is associated with increased paternal care.
10 Furthermore, increased egg size and reduced clutch volume are associated with increased care in bivariate
11 but not in multivariate analyses, suggesting that the relationships between care, egg size and clutch volume
12 are mediated by terrestrial reproduction. Taken together, our results suggest that parenting by males and
13 females has co-evolved, and complex parenting traits have evolved several times independently in Anura in
14 response to breeding in terrestrial environments.

15 **1. Introduction**

16 Parental care is a highly diverse social behaviour that has evolved to increase offspring survival,
17 although it tends to be costly to the caregiving parent [1–3]. Frogs and toads (Anura, hereafter frogs) are
18 characterized by a remarkable diversity of care [4,5] that is rivalled among vertebrates only by the older
19 and more speciose bony fishes [6]. Approximately 10–20% of extant frog species exhibit parental
20 behaviour, with the duration of care, the sex of the care provider and the type of care all showing unique
21 diversity and phylogenetic plasticity [5,7,8].

22 Understanding the evolutionary origin and maintenance of frog reproductive diversity is important
23 for understanding the adaptive significance of parental care both on evolutionary and ecological time
24 scales. Firstly, parental care tends to increase offspring survival especially in hostile environments
25 [9,10], and thus, it may have played a key role in the colonization of terrestrial habitats, i.e. not only in
26 the evolution of recent amphibians, but also in early tetrapods, opening the way to the subsequent
27 radiation into terrestrial niches [11]. Because parenting is one of the traits linked to expansion into non-
28 aquatic niches [12,13], identifying correlates of care in extant taxa will help us to understand major
29 transitions such as the occupation of terrestrial niches by early tetrapods. Secondly, parental care is an
30 ideal system to understand interactions between individuals that has been extensively investigated in
31 experimental and game-theoretic analyses of social interactions [14–16]. Since parenting influences
32 offspring survival and reproduction, parental decisions often impact on reproductive success and
33 population dynamics [14]. Third, phylogenetic comparative analyses are important to uncover ecological
34 and life-history predictors of parenting: they add a time axis to social interactions and link ecological and
35 evolutionary time scales [8,17,18], although these studies rarely cover a whole order of organisms [but
36 see 19,20].

37 Frog parental care is immensely diverse, and it includes simple types of care such as
38 constructing a foam nest or attending the eggs, as well as more elaborated forms such as internal
39 brooding of offspring [4,5,12], or cooperation between parents to attend and provide food for the
40 growing offspring [18]. Reproductive modes, i.e. the variation in nesting sites and the environment
41 where tadpoles develop, are also linked to care [5,7,21], although it is not clear whether these
42 associations hold for different care types, e.g. male-only, female-only and/or biparentally caring species,
43 or are relevant only at certain stages of reproduction [13].

44 Terrestrial environments are hostile for anamniotic eggs, given the high risks of desiccation and
45 exposure to diseases, parasites and predators although predation risk tends to be high in aquatic
46 environments as well. Therefore, egg attendance and egg protection, including urination on the eggs to
47 keep them moist, may considerably increase offspring survival in terrestrial environments [10,22]. In

48 addition, several frogs show extensive post-hatch care by carrying the tadpoles (or froglets) on their
49 backs or in specialized brooding organs [21,23]. Terrestrially reproducing frogs may have endotrophic
50 larvae that develop in a protected chamber, or directly developing embryos which skip larval phase and
51 hatch as fully-developed froglets [5,13]. These offspring rely upon parental provisions until they reach
52 the next stage of their development (e.g., metamorphosis, hatching or birth). Consequently, anurans
53 may enhance offspring care by extending the duration of care, by providing more protection for the
54 offspring and/or by increasing nutrient provisioning in nutrient-scarce environments. These behaviours
55 enable the offspring to spend a longer period of their development in a safe place [18,24,25].

56 Here we investigate three hypothesized drivers of parental care. We focus on the evolution of
57 care by scoring aspects of care on a finer scale and, to our knowledge, we present the most detailed
58 phylogenetic analyses of parenting in any taxa. First, we test whether terrestrial vs aquatic reproduction
59 relates to different care types, since caring is expected to provide protection against hostile
60 environments [5,10,13]. Second, we investigate whether life history variables including egg size and
61 clutch size correlate with the duration of care, protection and nourishment provided by any of the
62 parents. Specifically, we hypothesize that large eggs are associated with longer care and more
63 protection than small eggs [1,5,26]. Third, sexual selection has been linked to parental care since
64 Trivers' [27] seminal idea (reviewed by [1,9,28]), therefore we also investigate whether intense sexual
65 selection is associated with reduced care provisioning [29–31]. We use sexual size dimorphism (SSD)
66 as a proxy for the intensity of sexual selection [30,31]. Note that SSD as an indicator of sexual selection
67 has been debated in frogs, since SSD may reflect selections acting on females, e.g. to increase
68 fecundity [32–34]. Nonetheless, large size in males is associated with high reproductive success in
69 several species of frogs (reviewed by [5,35]) due to competition for mates or female choice [36–39], with
70 the latter processes being clearly linked to sexual selection.

71 To address these objectives, we use a comprehensive dataset that represents 46 out of 55 extant
72 anuran families. We analyse three main components of care: duration of care, protection of eggs and
73 young, and nutrient transfer to offspring. We consider these separately, because complex social traits
74 such as caring may have multiple components that evolve independently, or traded off against each
75 other and thus respond to different selection pressures [40–43]. Second, instead of combining male-only
76 care, female-only care and biparental care into a single variable (for instance, presence or absence of
77 care by either parent), we treat care by males and females separately, since ecological and life-history
78 variables may exert stronger effects on one sex than on the other. For instance, reproductive effort such
79 as egg size and clutch volume may be an important constraint of female care, whereas the intensity of
80 sexual competition may be an important constraint of male care [8,42,43]. Our work demonstrates that

81 these distinctions are important, since some of the relationships between care components and
82 ecological and life history variables differ between males and females.

83

84 **2. Methods**

85 **(a) Data collection**

86 We compiled the initial dataset from comprehensive phylogenetic comparative publications which
87 contain information on parental care in frogs [8,13,18,26,42,44,45]. Next, we augmented this dataset
88 with data from primary research publications (see Supporting Information), online databases [46,47],
89 and peer-reviewed books [5,48,49]. Our final database holds information from 1044 species; 399 of
90 these species exhibit some form of care. 46 of 55 Anura families are represented in our database that
91 hold approximately 95% of extant species (electronic supplementary material, table S1).

92

93 **(b) Parental care variables**

94 We used 4 variables for coding parental care. First, type of care was scored on a five point scale: 0—no
95 care; 1—male-only care; 2—female-only care; 3—biparental care; 4—care either by the male or the female.
96 Because the latter (i.e. uniparental care either by male or female) was reported only from seven
97 species, we excluded these species from the analyses. We considered biparental care if both parents
98 participate in offspring care. In the analysis of the number of care-providing parents, male-only care and
99 female-only care (scores 1 and 2) were combined as uniparental care, whereas score 3 was kept as
100 biparental care.

101 Second, we scored the duration of care based on discrete ontogenetic stages of the offspring
102 (egg, tadpole and juvenile care), and recorded the most advanced stage when a particular caring
103 behaviour has been reported. Care duration was defined as 0—no care; 1—egg care; 2—tadpole care; 3—
104 juvenile care. Care duration was scored separately for males and females.

105 Third, we scored offspring protection as a separate variable on a 6 point scale: 0—no protection;
106 1—offspring protected in a nest but not attended by parent(s); 2—parental attendance; 3—carrying on the
107 back of parent(s); 4—carrying in a closed organ (brooding pouch, dermal invagination, stomach or vocal
108 sack) of parent(s); 5—viviparity. This scoring was based on the logic that protection is more effective
109 when eggs or offspring are enclosed (e.g., in a brooding pouch, stomach, vocal sack, skin invagination)
110 rather than exposed on the back of the parent(s). The highest level of protection appears to be in
111 viviparous species because in these species the offspring only leave the reproductive tract of the mother
112 in a well-developed stage. Protection was scored separately for males and females.

113 Fourth, nourishment was categorized as follows: 0—exotrophic tadpoles feed mainly on external
114 food sources after depleting their yolk provided in the egg; 1—feeding tadpoles by trophic eggs or skin
115 secretion; 2—endotrophic tadpoles and directly developing species (which complete metamorphosis
116 inside the egg) reach metamorphoses nourishing only upon the egg's yolk. Nourishment was only
117 provided by the female except in two species in which the males provision the offspring (*Ecnomiohyla*
118 *raborum*, *Rhinoderma darwini* [5,50]). Consequently the latter two species were excluded from the
119 analyses of nourishment.

120 In order to investigate the consistency of our parental care scores with three published datasets
121 that scored parenting as a binary variable (presence/ absence) [13,26,44], we calculated the
122 correlations between these four datasets. The association between our dataset and the three
123 independent datasets were highly significant (electronic supplementary material, table S2).

124

125 (c) Life-history variables

126 Egg size was defined as the diameter of the egg (vitelline) in millimetres, excluding the gelatinous
127 capsule. Clutch size was defined as the number of eggs laid during one egg-laying event. We use clutch
128 volume (calculated as egg volume in cm^3 multiplied by clutch size) instead of clutch size in bivariate
129 analyses, because clutch volume appears to be a more appropriate indicator of female reproductive
130 expenditure than clutch size alone. However, to separate the potential effects of egg size and clutch
131 size in multivariate analyses, we included egg size and clutch size in the models. Snout-vent length
132 (SVL) was calculated separately for males and females, computed as mean values across all available
133 data for a given species. Body size (mean SVL) was calculated as the average of male and female
134 SVLs (in mm) for each species, whereas sexual size dimorphism was $\log_{10}(\text{SVL}_{\text{male}} / \text{SVL}_{\text{female}})$. Clutch
135 size, clutch volume and egg size were transformed to logarithmic scale to ensure homoscedasticity. If
136 several data points were available for a given species, we calculated their arithmetic mean.

137 Terrestrial reproduction and direct development were treated as binary variables (present or
138 absent), following previous classifications [13,21]. Terrestrial reproduction included floating foam nest on
139 water, as in this case the eggs themselves are included in an air-filled chamber, and also viviparity and
140 egg-brooding in different organs (pouches, stomach, vocal sac) provided by terrestrial parents. In
141 contrast, members of the genus *Pipa* which lay eggs in water and brood by aquatic parents were
142 considered aquatic breeders. We established these categories because anuran eggs are adapted
143 primarily to aquatic development and placing them outside water exposing them to hostile conditions,
144 and we considered the strategy for this challenge as an important aspect of parental care.

145

146 **(d) Phylogeny**

147 We used a comprehensive amphibian phylogenetic tree (the consensus tree from [51]) which included
148 the majority of species in our database. Archaeobatrachians were treated as all anurans outside the
149 Neobatrachia clade, and basal Neobatrachians as all Neobatrachians outside the Hyloidea and
150 Ranoidea clade (figure 1 and electronic supplementary material, figure S1). In figure 1a–c we used
151 Grafen-transformed branch lengths for better visualisation.

152 Anuran phylogenies tend to hold consistent patterns, at least in the topology of deeper nodes
153 [51,52]. Since most variation in care is between genera and families, our results appear to be robust to
154 different phylogenetic hypotheses. Nonetheless, to check the sensitivity of our results to alternative
155 phylogenies, we re-analysed the major models using an alternative tree: a composite tree based on
156 [53]. We augmented the latter tree [53] with 145 additional species inserted next to their closest species
157 (whenever known), based on recent phylogenetic information. Nodes were collapsed to polytomies
158 when no further information was available on the phylogenetic relationships within a genus. The species
159 we added manually are listed in electronic supplementary material, table S7, along with the references
160 for their phylogenetic relationships. We use the branch lengths of the original trees [51,53]. In composite
161 phylogeny we assumed half branch length for the new species we included using ‘phytools’ package
162 [54] in R 3.1.0 [55]. Importantly, the results using the alternative phylogeny were highly consistent with
163 those of the main phylogeny (see table 1, electronic supplementary material, tables S3–S6).

164

165 **(e) Comparative analyses**

166 We tested associations between parental care and life history variables using Phylogenetic Least
167 Squares (PGLS) [56–58]. This approach controls for the non-independence among species by
168 incorporating a variance–covariance matrix that represents their phylogenetic relationships. All analyses
169 incorporated phylogenetic dependence by estimating Pagel’s λ [58]. We built separate multipredictor
170 PGLS models for each parental care variable (i.e., care duration by females, care duration by males;
171 protection by females, protection by males, nourishment by females) in which one of the care variables
172 was the dependent variable, and log clutch size, log egg size, average SVL, sexual dimorphism,
173 terrestrial reproduction and direct development were the predictors.

174 We also included the higher nodes (i.e., superfamily ID, see supporting data s2) as a factor in
175 PGLS models [53,59]. This was to control for the lack of variation in key traits within higher taxa: for
176 traits that do not vary within higher nodes, the effective level of replication and appropriate degrees of
177 freedom can be questioned. Due to the lack of variation within clades, three species-poor lineages
178 (‘Crown Hyloidea’ that includes Alsodidae, Ceratophryidae, Hylodidae, Odontophrynidae and

179 Rhinodermatidae, 12 species in total; Heleophrynidae, 2 species; and Sooglossoidea, 3 species) were
180 excluded from analyses that included higher node as factor. Higher nodes were not included in analyses
181 on trophic egg feeding (Nourishment excluding species in Nourishment category 2) – in this case, most
182 of the clades showed little variance to the trait.

183 We tested multicollinearity between predictors using variance inflation factor (VIF) analysis: all
184 predictors had VIF values less than 5 ($VIF_{\max} = 2.02$). In multiple regression models, we included six
185 predictor variables (see table 1) except in models of nourishment we did not include developmental
186 mode since nourishment and developmental mode were correlated by definition. All analyses were
187 carried out using R 3.1.0 [55] with ‘caper’ package [60].

188

189 3. Results

190 Types of care varied across Anura, with each type of care occurring in several clades (figure 1; electronic
191 supplementary material, table S1). Major clades exhibited substantial variations in sex of care provider,
192 protection and nourishment (figure 1): exceptional diversity was exhibited by five clades that include
193 Eleutherodactylidae, Dendrobatidae, Leptodactylidae and Microhylidae, figure S1).

194 Care duration, protection and nourishment were not different between species with female-only
195 care, male-only care and biparental care (Phylogenetic Generalised Least Squares PGLS, care
196 duration: figure S2, $F_{2,379} = 0.716$; $p = 0.489$; protection: $F_{2,375} = 0.502$; $p = 0.610$; nourishment: $F_{2,370} =$
197 0.502 ; $p = 0.426$), nor between uniparental and biparental species (PGLS, care duration: $F_{1,387} = 0.415$;
198 $p = 0.520$; protection: $F_{1,382} = 0.788$; $p = 0.375$; nourishment: $F_{1,378} = 1.694$; $p = 0.194$). Thus, males and
199 females provide similar extents of care in anurans. Interestingly, the extent of parental care by males
200 was associated with the extent of female care both in care duration (PGLS; $F_{1,1006} = 8.674$; $p < 0.0001$)
201 and protection ($F_{1,1005} = 54.58$; $p < 0.0001$).

202 Terrestrial reproduction was a key factor associated with parental care (figure 1). All forms of care
203 were more common in terrestrial taxa than in aquatic ones (figure 2) including protection by males (5.5%
204 and 46.5% of aquatic and terrestrial taxa, respectively), protection by females (1% and 39.0%), and
205 nourishment (5.0% and 34.5%). Terrestrial reproduction was associated with increased levels of care by
206 both males and females (figure 2 and electronic supplementary material, table S3). Consequently, the
207 number of caring parents was significantly higher in terrestrial frogs than in aquatic ones (PGLS; $F_{1,591} =$
208 80.47 ; $p < 0.0001$).

209 Large eggs and small clutches were associated with extended parenting and protection by both
210 sexes, and provisioning by the female (figure 3 and electronic supplementary material, table S4).
211 However, since egg size and clutch volume often depend on body size, we also investigated the

212 relationship between egg size, clutch volume and care by including body size as an explanatory variable
213 in phylogenetically corrected models (table S5). When body size was statistically controlled for, neither
214 egg size nor clutch volume remained correlated with care with the exception of nourishment, and small
215 clutch volume remained associated with male care (electronic supplementary material, table S5).

216 Sexual size dimorphism was associated with male care but not female care (electronic
217 supplementary material, table S4 and figure S3). However, male care was associated with increased
218 male size relative to female size (table S4). The latter relationship remained significant when absolute
219 body size was controlled for in the analysis (table S5). The latter relationship between size dimorphism
220 and body size suggests that Anura exhibit an allometric relationship between sizes of males and
221 females known as Rensch's rule [44,61] (PGLS; $F_{1,430} = 7.39$; $p = 0.007$).

222 Terrestrial reproduction remained the main predictor of both care duration and offspring
223 protection in multipredictor analyses, but not for nourishment (table 1). These results suggest that the
224 relationships between life history and care we uncovered using bivariate analyses (electronic
225 supplementary material, table S4) may be mediated by terrestrial reproduction. Nevertheless, in multi-
226 predictor models male-biased size dimorphism remained associated with male care (table 1), and
227 nourishment remained associated with clutch size and body size.

228 Trophic egg feeding (i.e, exotrophic tadpoles feed on external food sources versus tadpoles fed
229 by trophic eggs or skin secretion) was associated with sexual dimorphism and clutch volume (electronic
230 supplementary material, tables S3–S4), and these relationships remained significant after controlling for
231 body size (table S5, S6).

232

233 4. Discussion

234 Our comprehensive phylogenetic analyses of the extent of male and female care show that care is
235 extremely variable both within and among major clades of frogs. Not only the presence or absence of
236 care varies – that has been uncovered by previous studies [18,26] – but also the type and duration of
237 care are highly variable. In contrast to reptiles and mammals, in which the females are the main care
238 provider, or to birds in which biparental care is the predominant form of care [9,62], in frogs female-only,
239 male-only and biparental care are all widespread among various lineages, and the involvement of males
240 and females in care is comparable. Because in ~20% of newts and salamanders (urodeles) one of the
241 parents guards the eggs or the offspring [5,9,63,64], and caecilians in which females feed their offspring
242 using an excretion of their skin [65,66], the overall richness of caring is spectacular in amphibians. This
243 suggests that over the course of amniote evolution, the phylogenetically younger tetrapod clades (e.g.,
244 reptiles, birds and mammals) became specialised to a limited set of care patterns [62].

245 Consistently with previous studies [11–13], we found that the transition towards terrestrial
246 reproduction facilitated parental care. Moreover, our work advances the understanding of evolutionary
247 relationships by showing that terrestrial reproduction is related to all forms of both male and female
248 care, except nourishment. Thus, when early tetrapods invaded terrestrial niches, both males and
249 females may have been under the effects of selection forces to improve the survival of their offspring, so
250 that both males and females evolved various forms of care provisioning in response to terrestrial
251 reproduction. Therefore, the subsequent canalization of parental care largely towards females (e.g., in
252 reptiles and mammals) and cooperation by both sexes (in birds) may have been the result of additional
253 selective pressures that the ancestors of these clades faced during their radiation into various ecological
254 niches. This implies that the predominance of maternal care coevolved with internal fertilization [67, but
255 see 68]. In urodeles, where internal fertilization is more frequent, only phylogenetically basal external
256 fertilizers with aquatic reproduction appear to provide paternal care [5,63], although clutch attending by
257 females is widespread especially in those with terrestrial reproduction [63].

258 We also found that egg size and clutch volume are related to parental care, although these
259 associations became non-significant by including terrestriality in the models. On the one hand, terrestrial
260 egg-layers have larger eggs and smaller clutches than aquatically reproducing frogs [8,13,26], which
261 may be predicted by other factors besides parental care, such as selection on offspring size [69] or
262 protection against the hostile environment [11]. However, egg size and clutch size were no longer
263 associated with care duration and protection when body size was statistically controlled. Therefore, the
264 associations between egg size, clutch size and parenting showed by previous studies [8,13,26] may
265 have been mediated by other factors, e.g. body size and/or terrestrial reproduction. On the other hand,
266 increased nutrient transfer to the offspring is associated with reduced clutch size, which seems to be the
267 result of an increased investment to individual offspring [3] traded off against fecundity. Moreover,
268 trophic egg feeding is also associated with reduced egg size [table S6], implying that mothers may
269 reduce the cost egg production using this type of nourishment.

270 Finally, the evolutionary relationship between male care and size dimorphism has been debated
271 [32-34], and our results using fine-scaled care variables, multi-predictor models and more extensive
272 taxonomic coverage than previous studies, confirm that male care is associated with sexual size
273 dimorphism [44]. We suggest two mutually non-exclusive explanations for the increased male size
274 (relative to female size) with the extent of male care. On the one hand, sexual selection may favour
275 larger males in male caring species if females prefer large males and/or large males are more
276 successful in coercive mating [38,39], provided that these males are more successful in nursing the
277 offspring. On the other hand, male care may reduce the fecundity selection pressure on females, so that

278 female size decreases in those species in which the males provide care [44,61]. To distinguish between
279 these scenarios, further experimental and phylogenetic analyses are warranted [9,17].

280 Here we treat parental care as an invariable trait for a given species, although this assumption
281 suits some species better than others. For example, *Allobates femoralis* exhibits variation in parenting
282 since females transport tadpoles but this behaviour is only provoked by the absence of the father that is
283 normally the care-providing parent [41]. Therefore, future phylogenetic analyses should pay attention to
284 the flexibility of care provisioning [41,70]. Care provision can be further tuned by variation in the
285 ecological [25,71,72] or social environment [41], and this plasticity not only enables better adaptation to
286 seasonal and unpredictable changes of the environment, but it may also act as the origin of evolutionary
287 changes in the extent of care [41,45] or in parental roles [41,43,45]. Field-based and laboratory-based
288 studies will likely add more examples for this plasticity and would help in identifying environmental
289 factors which provokes shifts.

290 In summary, parental care is predicted by ecological and life history variables in frogs. Care is a
291 complex social trait and specific aspects of care have different predictors in males and females. Further
292 analyses are needed to investigate the impacts of climate, reproductive modes and mating systems on
293 care strategies. Since new forms of parental care are cropping up [71,72], field-based studies of yet
294 unstudied species are needed to explore breeding systems (including parenting) in frogs that live in
295 remote areas and/or inhabit extreme environments. Taken together, studies of anuran parental care
296 provide important contributions to the understanding of reproduction, evolution and diversification in the
297 most threatened vertebrate class of the Anthropocene.

298
299 **Data accessibility.** All relevant data are within the paper and its Supporting Information files, and will be available in an
300 appropriate public repository after acceptance of the manuscript.

301 **Authors' contributions.** BV and TS conceived the study. BV, ZV, RPF and TS designed the analyses, BV collected data,
302 BV and ZV conducted analyses. All authors wrote the paper.

303 **Competing interests.** The authors have declared that no competing interests exist.

304 **Funding.** The authors were supported by the Hungarian Scientific Research Fund (NKFIH 116310, KKP-126949). TS was
305 also funded by a Wolfson Merit Award from the Royal Society.

306 **Acknowledgements.** E. Mizsei helped constructing the figures. We thank R. A. Pyron for providing phylogenetic data, G.
307 Katona for his help in data collection. We appreciate the comments of I. Gomez-Mestre, L. Kratochvil, K. Summers and two
308 anonymous reviewers, whose suggestions substantially improved our work.

309

310 References

311 1. Clutton-Brock TH. 1991 *The evolution of parental care*. Princeton: Princeton Univ. Press.

- 312 2. Székely T, Moore AJ, Komdeur J. 2010 *Social behaviour: genes, ecology and evolution*.
313 Cambridge: Cambridge Univ. Press.
- 314 3. Smiseth PT, Kölliker M, Royle NJ. 2012 What is parental care? In *The evolution of parental care*
315 (eds Royle NJ, Smiseth PT, Kölliker M), pp. 1 – 17. Oxford: Oxford Univ. Press.
- 316 4. Crump ML. 1995 Parental care. In: *Amphibian biology, volume 2: Social behavior* (eds
317 Heathvole H, Sullivan BK), pp. 518 – 567. Chipping Norton: Surrey Beatty & Sons.
- 318 5. Wells KD 2007. Parental care. In *The ecology and behaviour of amphibians* (Wells KD).
319 Chicago and London: Univ. of Chicago Press, pp. 516 – 556.
- 320 6. Mank JE, Promislow DEL, Avise JC 2005 Phylogenetic perspectives in the evolution of parental
321 care in ray-finned fishes. *Evolution* **59**, 1570 – 1578. (doi: 10.1554/04-734)
- 322 7. Duellman WE, Trueb L 1986 *Biology of amphibians*. New York: McGraw-Hill.
- 323 8. Summers K, McKeon CS, Heying H, Patrick W. 2007 Social and environmental influences on
324 egg size evolution in frogs. *J. Zool.* **271**, 225 – 232. (doi: 10.1111/j.1469-7998.2006.00213.x)
- 325 9. Balshine S. 2012 Patterns of parental care in vertebrates. In *The evolution of parental care* (eds
326 Royle NJ, Smiseth PT, Kölliker M). Oxford: Oxford Univ. Press, pp. 62 – 80.
- 327 10. Poo S, Bickford DP. 2013 The adaptive significance of egg attendance in a South-East Asian
328 tree frog. *Ethology* **119**, 1 – 9. (doi: 10.1111/eth.12108)
- 329 11. Martin KL, Carter AL 2013 Brave new propagules: terrestrial embryos in anamniotic eggs.
330 *Integr. Comp. Biol.* **53**, 233 – 247. (doi: 10.1093/icb/ict018)
- 331 12. Crump ML. 1996 Parental care among the Amphibia. *Adv. Stud. Behav.* **25**, 109 – 144. (doi:
332 10.1016/S0065-3454(08)60331-9)
- 333 13. Gomez-Mestre I, Pyron RA, Wiens JJ. 2012 Phylogenetic analyses reveal unexpected patterns
334 in the evolution of reproductive modes in frogs. *Evolution* **66**, 3687 – 3700. (doi: 10.1111/j.1558-
335 5646.2012.01715.x)
- 336 14. McNamara JM, Weissing FJ. 2010 Evolutionary game theory. In: *Social behaviour: genes,*
337 *ecology and evolution* (eds Székely T, Moore AJ, Komdeur J), pp. 88 – 106. Cambridge:
338 Cambridge Univ. Press.
- 339 15. Houston AI, Székely T, McNamara JM. 2013 The parental investment models of Maynard
340 Smith: a retrospective and prospective view. *Anim. Behav.* **86**, 667 – 674. (doi:
341 10.1016/j.anbehav.2013.08.001)
- 342 16. Barta Z, Székely T, Liker A, Harrison F. 2014 Social role specialization promotes cooperation
343 between parents. *Am. Nat.* **183**, 747 – 761. (doi: 10.1086/676014)
- 344 17. Székely T, Reynolds JD 1995 Evolutionary transitions in parental care in shorebirds. *Proc. R.*
345 *Soc. B* **262**, 57 – 64. (doi: 10.1098/rspb.1995.0176)

- 346 18. Brown JL, Morales V, Summers K. 2010 A key ecological trait drove the evolution of biparental
347 care and monogamy in an amphibian. *Am. Nat.* **175**, 436 – 446. (doi: 10.1086/650727)
- 348 19. West HER, Capellini I 2016 Male care and life history traits in mammals. *Nat. Commun.* **7**,
349 11854. (doi: 10.1038/ncomms11854)
- 350 20. Remes V, Freckleton R, Tökölyi J, Liker A, Székely T 2015 The evolution of parental
351 cooperation in birds. *PNAS* **112**, 12603 – 13608. (doi: 10.1073/pnas.1512599112)
- 352 21. Haddad CFB, Prado CPA. 2005 Reproductive modes in frogs and their unexpected diversity in
353 the Atlantic Forest of Brazil. *BioScience* **55**, 208 – 217. (doi: 10.1641/0006-
354 3568(2005)055[0724:RMIFC]2.0.CO;2)
- 355 22. Bickford DP. 2004 Differential parental care behaviors of arboreal and terrestrial microhylid
356 frogs from Papua New Guinea. *Behav. Ecol. Sociobiol.* **55**, 402 – 409. (doi: 10.1007/s00265-
357 003-0717-x)
- 358 23. Köhler F, Günther R. 2008 The radiation of microhylid frogs (Amphibia: Anura) on New Guinea:
359 A mitochondrial phylogeny reveals parallel evolution of morphological and life history traits and
360 disproves the current morphology-based classifications. *Mol. Phylogenet. Evol.* **47**, 353 – 365.
361 (doi: 10.1016/j.ympev.2007.11.032)
- 362 24. Shine R. 1978 Propagule size and parental care: the “safe harbour” hypothesis. *J. Theor. Biol.*
363 **75**, 417 – 424. (doi: 10.1016/0022-5193(78)90353-3)
- 364 25. McKeon CS, Summers K. 2013 Predator driven reproductive behavior in a tropical frog. *Evol.*
365 *Ecol.* **27**, 725 – 737. (doi: 10.1007/s10682-013-9641-3)
- 366 26. Summers K, McKeon CS, Heying H. 2006 The evolution of parental care and egg size: a
367 comparative analysis in frogs. *Proc. R. Soc. B* **273**, 687 – 692. (doi: 10.1098/rspb.2005.3368)
- 368 27. Trivers RL. 1972 Parental investment and sexual selection. In *Sexual selection and the descent*
369 *of man* (ed Campbell B), pp. 136 – 179. Chicago: Aldine-Atherton.
- 370 28. Klug H, Alonso SH, Bonsall MB. 2012 Theoretical foundations of parental care. In *The evolution*
371 *of parental care* (eds Royle NJ, Smiseth PT, Kölliker M), pp. 21 – 39. Oxford: Oxford Univ.
372 Press.
- 373 29. Queller DC. 1997 Why do females care more than males? *Proc. R. Soc. Lond. B* **264**, 1555 –
374 1557. (doi: 10.1098/rspb.1997.0216)
- 375 30. Jennions MD, Kokko H. 2010 Sexual selection. In *Evolutionary behavioral ecology* (eds
376 Westneat DE, Fox CW), pp. 343 – 364. Oxford: Oxford Univ. Press.
- 377 31. Janicke T, Häderer IK, Lajeunesse MJ, Anthes N. 2016 Darwinian sex roles confirmed across
378 the animal kingdom. *Sci. Adv.* **2**, e1500983. (doi: 10.1126/sciadv.1500983)

- 379 32. Monnet JM, Cherry MI. 2002 Sexual size dimorphism in anurans. *Proc. R. Soc. Lond. B* **269**,
380 2301 – 2307. (doi: 10.1098/rspb.2002.2170)
- 381 33. Kupfer A. 2007 Sexual size dimorphism: an overview. In *Sex, size and gender roles:*
382 *evolutionary studies of sexual size dimorphism* (eds Fairbairn DJ, Blanckenhorn WU, Székely
383 T), pp. 50 – 59. Oxford: Oxford Univ. Press.
- 384 34. Monroe MJ, Alonzo SH. 2014 Sexual size dimorphism is not associated with the evolution of
385 parental care in frogs. *Ecol. Evol.* **4**, 3991 – 3998. (doi: 10.1002/ece3.1263)
- 386 35. Arak A. 1983 Male-male competition and mate choice in anuran amphibians. In *Mate choice* (ed
387 Bateson P), pp. 181 – 205. Cambridge: Cambridge Univ. Press.
- 388 36. Davies NB, Halliday TR 1979. Competitive mate searching in male common toads, *Bufo bufo*.
389 *Anim. Behav.* **27**, 1253 – 1267. (doi: 10.1016/0003-3472(79)90070-8)
- 390 37. Ryan MJ. 1980 Female mate choice in a neotropical frog. *Science* **209**, 523 – 525. (doi:
391 10.1126/science.209.4455.523)
- 392 38. Rausch AM, Sztatecsny M, Jehle R, Ringler E, Hödl W. 2014 Male body size and parental
393 relatedness, but not nuptial colouration influence paternity success during scramble competition
394 in *Rana arvalis*. *Behaviour* **151**, 1869 – 1884. (doi: 10.1163/1568539X-00003220)
- 395 39. Vági B, Hettyey A. 2016 Intraspecific and interspecific competition for mates: *Rana temporaria*
396 males are effective satyrs of *Rana dalmatina* females. *Behav. Ecol. Sociobiol.* **70**, 1477 – 1484.
397 (doi: 10.1007/s00265-016-2156-5)
- 398 40. Székely T, Remeš V, Freckleton RP, Liker A. 2013 Why care? Inferring the evolution of complex
399 social behaviour. *J. Evol. Biol.* **26**, 1381 – 1391. (doi: 10.1111/jeb12148)
- 400 41. Ringler E, Pašukonis A, Tecumseh Fitch W, Huber L, Hödl W, Ringler M. 2015 Flexible
401 compensation of uniparental care: female poison frogs take over when males disappear. *Behav.*
402 *Ecol.* **26**, 1219 – 1225. (doi: 10.1093/beheco/arv069)
- 403 42. Zamudio KR, Bell RC, Nali RC, Haddad CFB, Prado CPA. 2016 Polyandry, predation and the
404 evolution of frog reproductive modes. *Am. Nat.* **188**, S41 – S61. (doi: 10.1086/687547)
- 405 43. Goyes Vallejos J, Grafe TU, Ahmad Sah HH, Wells KD. 2017 Calling behavior of males and
406 females of a Bornean frog with male parental care and possible sex role reversal. *Behav. Ecol.*
407 *Sociobiol.* **71**, 95. (doi: 10.1007/s00265-017-2323-3)
- 408 44. Han X, Fu J. 2013 Does life history shape sexual size dimorphism in anurans? A comparative
409 analysis. *BMC Evol. Biol.* **13**, 27. (doi: 10.1186/1471-2148-13-27)
- 410 45. Delia J, Bravo-Valencia L, Warkentin KM. 2017 Patterns of parental care in neotropical
411 glassfrogs: fieldwork alters hypotheses of sex-role evolution. *J. Evol. Biol.* **30**, 898 – 914. (doi:
412 10.1111/jeb.13059)

- 413 46. Amphibiaweb 2018 [cited 2018 March 18]. Berkeley: University of California. Available from
414 <https://www.amphibiaweb.org>.
- 415 47. IUCN. 2018 *The IUCN Red List of Threatened Species*. Version 2018-1 [cited 2018 March 18].
416 Available from <https://www.iucnredlist.org>.
- 417 48. Stuart SN, Hoffmann M, Chanson JS, Cox NA, Berridge RJ, Ramani P et al., eds 2008
418 *Threatened amphibians of the world*. Barcelona: Lynx Edition.
- 419 49. Glaw F, Vences M. 2007 *A field guide to the amphibians and reptiles of Madagascar*. Cologne:
420 Vences & Glaw Verlags GbR.
- 421 50. Hansen RW. 2012 About our cover: *Ecnomiohyla rabborum*. *Herpetological Review* **42**, 3.
- 422 51. Jetz W, Pyron RA. 2018 The interplay of past diversification and evolutionary isolation with
423 present imperilment across the amphibian tree of life. *Nat. Ecol. Evol.* (doi: 10.1038/s41559-
424 018-0515-5)
- 425 52. Feng YJ, Blackburn DC, Liang D, Hillis DM, Wake DB, Cannatella DC et al. 2017
426 Phylogenomics reveal rapid, simultaneous diversification of three major clades of Gondwanan
427 frogs at the Cretaceous–Paleogene boundary. *PNAS* **114**, E5864 – E5870. (doi:
428 10.1073/pnas.1704632114)
- 429 53. Pyron RA, Wiens JJ. 2011 A large-scale phylogeny of Amphibia including over 2800 species,
430 and a revised classification of extant frogs, salamanders, and caecilians. *Mol. Phylogenet. Evol.*
431 **61**, 543 – 583. (doi: 10.1073/pnas.1704632114)
- 432 54. Revell LJ 2012 phytools: an R package for phylogenetic comparative biology (and other things).
433 *Methods Ecol. Evol.* **3**, 217 – 223. (doi: 10.1111/j.2041-210X.2011.00169.x)
- 434 55. R-Core-Team R 2013 Version 3.1.0 [cited 18 March 2018]. *A language and environment for*
435 *statistical computing*. Available from: <http://www.r-project.org/>.
- 436 56. Martins EP, Hansen TF. 1997 Phylogenies and the comparative method: A general approach to
437 incorporating phylogenetic information into the analysis of interspecific data. *Am. Nat.* **149**, 646
438 – 667. (doi: 10.1086/303188)
- 439 57. Pagel M. 1999 Inferring the historical patterns of biological evolution. *Nature* **401**, 877 – 884.
440 (doi: 10.1038/44766)
- 441 58. Freckleton RP, Harvey PH, Pagel M. 2002 Phylogenetic analysis and comparative data: a test
442 and review of evidence. *Am. Nat.* **160**, 712 – 726. (doi: 10.1086/343873)
- 443 59. Frost DR, Grant T, Faivovich JN, Bain RH, Haas A, Haddad CFB et al. 2006 The amphibian
444 tree of life. *Bulletin of the American Museum of Natural History* **297**, 1 – 291. (doi:
445 10.1206/0003-0090(2006)297[0001:TATOL]2.0.CO;2)

- 446 60. Orme D. 2013 *The caper package: comparative analysis of phylogenetics and evolution in R*. R
447 package version, 5 [cited 18 March 2018]. Available from: [https://cran.r-](https://cran.r-project.org/web/packages/caper/)
448 [project.org/web/packages/caper/](https://cran.r-project.org/web/packages/caper/)
- 449 61. Fairbairn DJ, Blanckenhorn WU, Székely T. 2007 *Sex, size and gender roles: evolutionary*
450 *studies of sexual size dimorphism*. Oxford: Oxford Univ. Press.
- 451 62. Reynolds JD, Goodwin NB, Freckleton RP. 2002 Evolutionary transitions in parental care and
452 live-bearing in Vertebrates. *Phil. Trans. Roy. Soc.* **357**, 269 – 281. (doi:
453 10.1098/rstb.2001.0930)
- 454 63. Nussbaum RA 1985 *The evolution of parental care in salamanders*. Ann Arbor: The University
455 of Michigan Press.
- 456 64. Tóth Z, Hoi H, Hettyey A 2011 Intraspecific variation in the egg-wrapping behaviour of female
457 smooth newts, *Lissotriton vulgaris*. *Amphibia-Reptilia* **32**:77 – 82. (doi:
458 10.1163/017353710X543001)
- 459 65. Kupfer A, Müller H, Antoniazzi AM, Jared C, Greven H, Nussbaum RA et al. 2006 Parental
460 investment by skin feeding in a caecilian amphibian. *Nature* **440**, 926 – 929. (doi:
461 0.1038/nature04403)
- 462 66. Kupfer A, Maxwell E, Reinhard S, Kuehnel S 2016 The evolution of parental investment in
463 caecilian amphibians: a comparative approach. *Biol. J. Linn. Soc.* **119**, 4 – 14. (doi:
464 10.1111/bj.12805)
- 465 67. Gross MR, Shine R 1981 Parental care and the mode of fertilization in ectothermic vertebrates.
466 *Evolution* **35**, 775-793. (doi: 10.1111/j.1558-5646.1981.tb04937.x)
- 467 68. Beck CW 1998 Mode of fertilization and parental care in anurans. *Anim. Behav.* **55**, 439 – 449.
468 (doi: 10.1006/anbe.1997.0619)
- 469 69. Nussbaum RA. 1987 Parental care and egg size in salamanders: An examination of the safe
470 harbor hypothesis. *Res. Popul. Ecol.* **29**, 27 (doi: 10.1007/BF02515423)
- 471 70. Simon MP. 1983 The ecology of parental care in a terrestrial breeding frog from New Guinea.
472 *Behav. Ecol. Sociobiol.* **14**, 61 – 67. (doi: 10.1007/BF00366657)
- 473 71. Poelman EH, van Wijngaarden RPA, Raaijmakers CE. 2013 Amazon poison frogs (*Ranitomeya*
474 *amazonica*) use different phytohelm characteristics to determine their suitability for egg and
475 tadpole deposition. *Evol. Ecol.* **27**, 661 – 647. (doi: 10.1007/s10682-013-9633-3)
- 476 72. Schulte LM, Lötters S. 2013 The power of the seasons: rainfall triggers parental care in poison
477 frogs. *Evol. Ecol.* **27**, 711 – 723. (doi: 10.1007/s10682-013-9637-z)

- 478 73. Gururaja KV, Dinesh KP, Priti H, Ravikath G. 2014 Mud-packing frog: a novel breeding
479 behaviour and parental care in a stream-dwelling new species of *Nyctibatrachus* (Amphibia,
480 Anura, Nyctibatrachidae). *Zootaxa* **3796**, 033 – 061. (doi: 10.11646/zootaxa.3796.1.2)
- 481 74. Iskandar DT, Evans BJ, McGuire AJ. 2014 A novel reproductive mode in frogs: a new species
482 of fanged frog with internal fertilization and birth of tadpoles. *PLoS ONE* **9**, e115884. (doi:
483 10.1371/journal.pone.0119988)

485 **Figure legends**

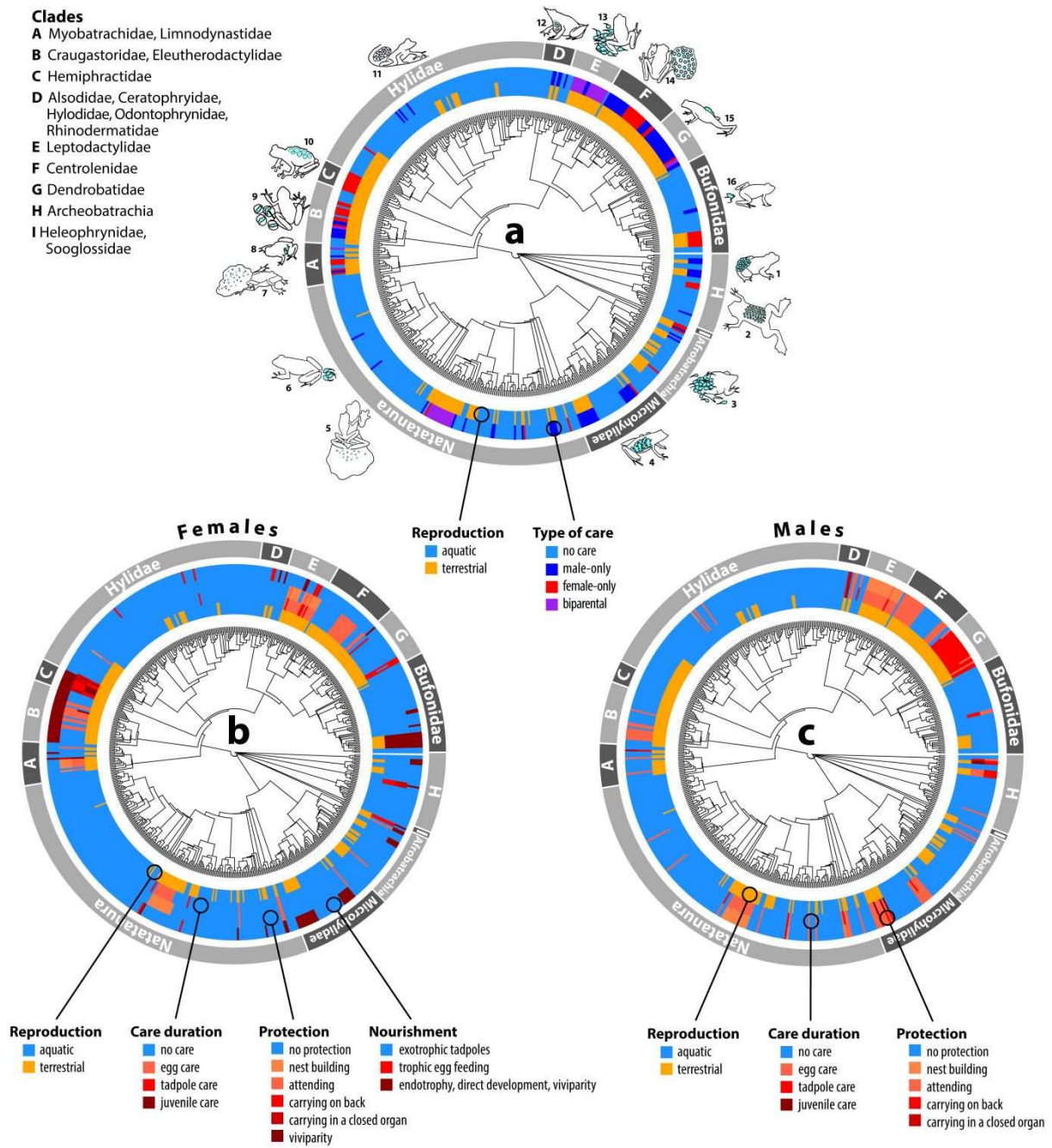
486 **Figure 1.** Phylogenetic distribution of parental care and breeding habitat in frogs. (a) Type of care (592
 487 species). (1) Alytidae (*Alytes* sp., male egg transport), (2) Pipidae (*Pipa* sp., eggs embedded in the
 488 dorsal skin of female), (3) Hemisotidae (*Hemisus* sp, tadpole guarding by the female), (4) Microhylidae
 489 (*Sphenophryne cornuta*, juvenile transport by the male), (5) Rhacophoridae (*Rhacophorus* sp., foam
 490 nest made by both parents), (6) Dicroglossidae (*Limnonectes larvaepartus*, viviparity: live birth to
 491 larvae), (7) Limnodynastidae (*Limnodynastes peronii*, foam nest made by the female), (8)
 492 Myobatrachidae (*Assa darlingtoni*, male carry tadpoles in inguinal pouches), (9) Eleutherodactylidae
 493 (*Eleutherodactylus coqui*, direct developing eggs guarded by the male), (10) Hemiphractidae
 494 (*Flectonotus* sp., eggs carried in dorsal pouch of the female), (11) Hylidae (*Hypsiboas boans*, male
 495 guard eggs in constructed mud pool), (12) Rhinodermatidae (*Rhinoderma darwini*, tadpoles reared in
 496 vocal sac of the male), (13) Leptodactylidae (*Leptodactylus podicipinus*, the pair constructs the foam
 497 nest, the female guard the tadpoles), (14) Dendrobatidae (*Ranitomeya imitator*, the male transports
 498 tadpoles, the female feeds tadpoles in cooperation with the male), (16) Bufonidae (*Nimbaphrynoides*
 499 sp., viviparity: live birth to toadlets). (b) Diversity of female care (care duration, protection and
 500 nourishment, 594 species). (c) Diversity of male care (care duration and protection, 593 species).
 501 Grafen-transformed branch lengths are shown. 0 refers to no care in a particular trait, whereas 3, 5 and
 502 2 refer to the most advanced stage in offspring development in care duration, protection (for males and
 503 females separately) and nourishment (for females), respectively.

504
 505 **Figure 2.** Care duration, offspring protection and nourishment in relation to aquatic and terrestrial
 506 reproduction in frogs. Number of species exhibiting different extent of care duration, offspring protection
 507 and nourishment (on the left) and the extent of female and male parental care in aquatic and terrestrial
 508 species (mean + SD; on the right). Red shades represent female care, blue shades represent male
 509 care.

510
 511 **Figure 3.** Parental care in relation to life histories in frogs. Egg size and clutch volume are plotted
 512 against offspring care, protection and nourishment in females (red) and males (blue, *see statistics in*
 513 *electronic supplementary material, table S4–S5*). The variables were scored as follows. Care duration:
 514 0–no care; 1–egg care; 2–tadpole care; 3–juvenile care; Protection: 0–no protection; 1–nest building; 2–
 515 attending; 3–carrying on back; 4–carrying in a closed organ; 5–viviparity; Nourishment: 0–exotrophic
 516 tadpoles; 1–trophic egg feeding; 2–endotrophic tadpoles, direct development or viviparity.

518

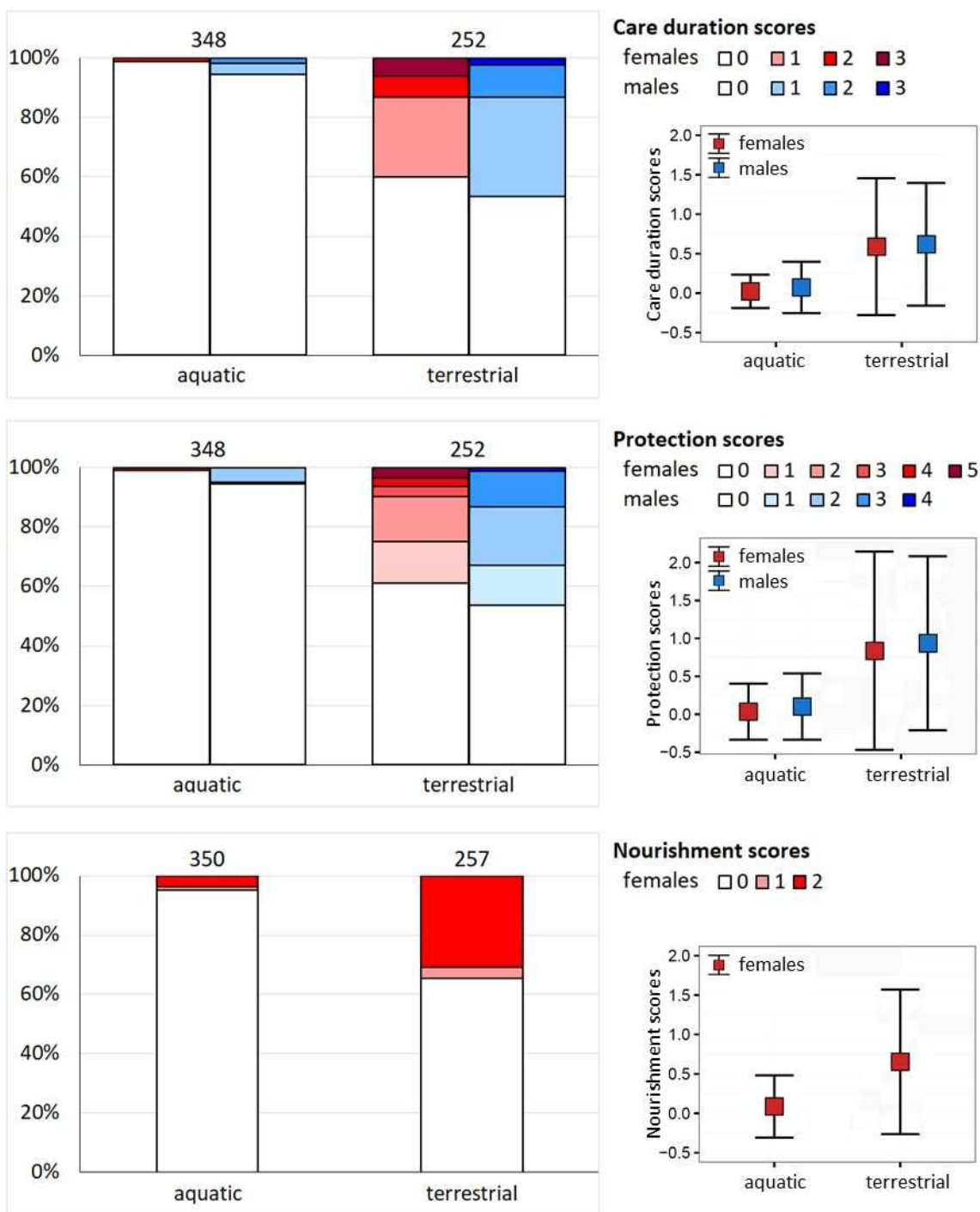
519 **Figure 1**



520

521

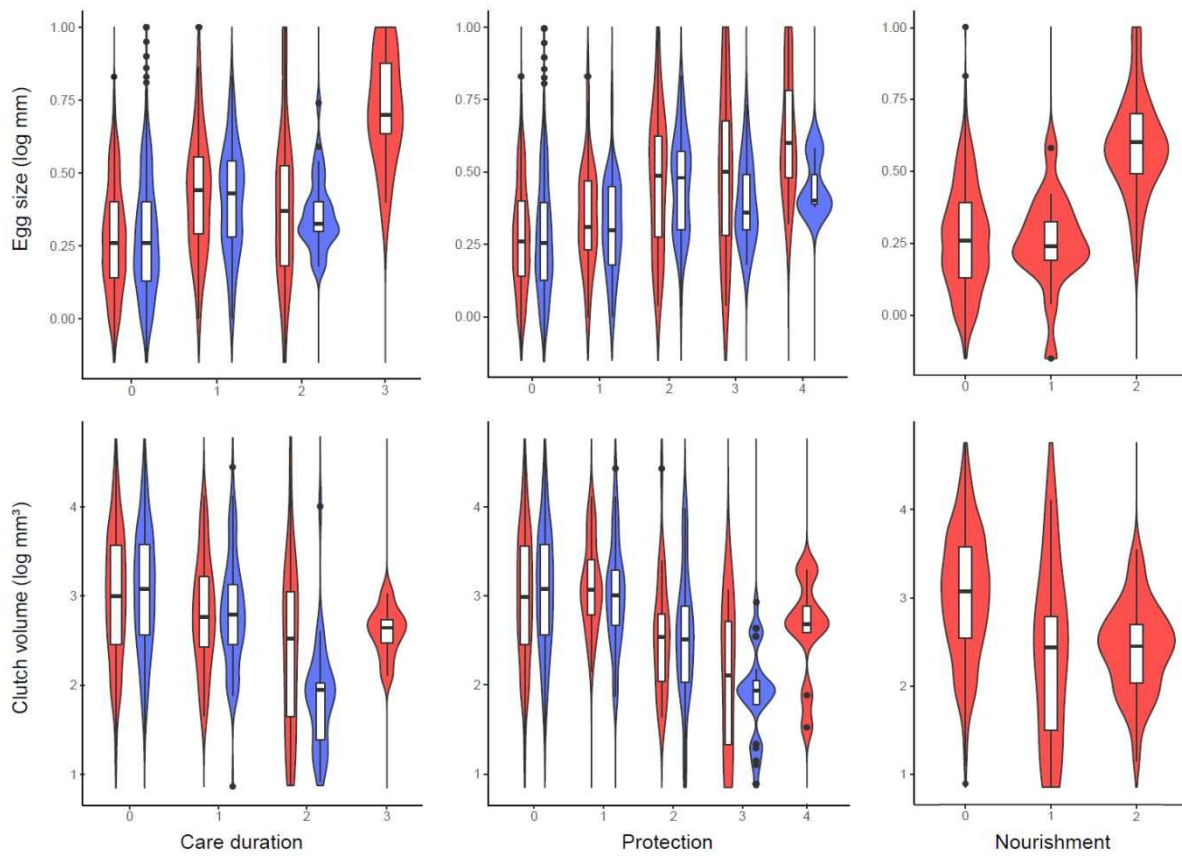
523
524 **Figure 2**



525

527
528
529

Figure 3



530
531

533 **Table 1.** Parental care in relation to ecology, life-history and sexual dimorphism in Anura using
534 phylogenetically corrected generalized linear squares (PGLS) models. Multipredictor PGLS models for
535 each care variable are provided separately for males and females; note that only females provide
536 nourishment. Higher node was included in the models except for nourishment (see Methods). Italics
537 indicate significant predictors. Egg size is provided as diameter in mm. Clutch volume is calculated as
538 egg volume \times clutch size and provided as mm³. Clutch volume and egg size were log-transformed prior
539 to the analyses. Body size refers to the average snout-vent length (SVL) in mm. Sexual size dimorphism
540 was calculated as $\log_{10}(SVL_{\text{male}} / SVL_{\text{female}})$. We provide parameter estimates with standard error ($\beta \pm$
541 *SE*), the corresponding *t* and *P* values, and the adjusted R^2 for the model including $F(df_{\text{effect}}, df_{\text{error}})$ and
542 *P* values, respectively.

Care duration	by females			by males		
	$\beta \pm SE$	<i>T</i>	<i>P</i>	$\beta \pm SE$	<i>t</i>	<i>P</i>
Terrestrial reproduction	0.227 ± 0.103	2.209	0.028	0.278 ± 0.093	3.000	0.003
Direct development	-0.386 ± 0.224	1.721	0.087	-0.015 ± 0.197	0.077	0.938
Clutch size	0.007 ± 0.056	0.130	0.897	-0.006 ± 0.053	0.110	0.913
Egg size	0.011 ± 0.177	0.061	0.951	0.009 ± 0.166	0.052	0.959
Body size	-0.001 ± 0.001	0.407	0.685	0.002 ± 0.001	1.421	0.157
Sexual dimorphism	-0.110 ± 0.388	0.282	0.778	1.070 ± 0.376	2.842	0.005
Model	0.155	2.961 (18, 175)	0.0001	0.175	3.254 (18, 174)	< 0.0001

Protection	by females			by males		
	$\beta \pm SE$	<i>T</i>	<i>P</i>	$\beta \pm SE$	<i>t</i>	<i>P</i>
Terrestrial reproduction	0.426 ± 0.137	3.113	0.002	0.414 ± 0.158	2.626	0.009
Direct development	-0.452 ± 0.295	1.532	0.127	0.086 ± 0.332	0.261	0.795
Clutch size	0.045 ± 0.087	0.524	0.601	-0.016 ± 0.097	0.168	0.867
Egg size	-0.059 ± 0.285	0.209	0.835	0.084 ± 0.310	0.272	0.786
Body size	0.000 ± 0.001	0.038	0.969	0.001 ± 0.002	0.656	0.513
Sexual dimorphism	-0.208 ± 0.640	0.325	0.746	2.156 ± 0.701	3.075	0.002
Model	0.282	5.231 (18, 176)	< 0.0001	0.125	2.539 (18, 176)	< 0.001

Nourishment	by females			by females excluding species with endotrophic tadpoles, direct development and viviparity		
	$\beta \pm SE$	<i>T</i>	<i>P</i>	$\beta \pm SE$	<i>t</i>	<i>P</i>
Terrestrial reproduction	0.018 ± 0.098	0.186	0.853	0.014 ± 0.055	0.265	0.792
Clutch size	-0.180 ± 0.053	3.389	< 0.001	-0.066 ± 0.030	2.162	0.032
Egg size	0.119 ± 0.169	0.706	0.481	-0.195 ± 0.097	2.010	0.046

Body size	0.003 ± 0.001	2.043	0.042	0.003 ± 0.001	3.513	0.001
Sexual dimorphism	-0.148 ± 0.373	0.398	0.691	0.162 ± 0.347	0.208	0.437
Model	0.194	3.781 (17, 179)	< 0.0001	0.060	3.283 (5, 174)	0.007

Research

Parental care and the evolution of terrestriality in frogs

Balázs Vági¹, Zsolt Végvári^{2,3}, András Liker⁴, Robert P. Freckleton⁵, Tamás Székely⁶

¹Department of Evolutionary Zoology and Human Biology, University of Debrecen, Debrecen, Hungary

²Department of Conservation Zoology, University of Debrecen, Debrecen, Hungary

³Department Hortobágy National Park Directorate, Debrecen, Hungary

⁴Department of Limnology, University of Pannonia, Veszprém, Hungary,

⁵Department of Animal and Plant Sciences, University of Sheffield, Sheffield, United Kingdom

⁶Milner Centre for Evolution, University of Bath, Bath, United Kingdom

Author for correspondence:

Tamás Székely

T.Szekely@bath.ac.uk

Running title: Comparative analyses of frog care

Subject Category

Evolution

Subject Areas

behaviour, evolution

1 Frogs and toads (Anura) exhibit some of the most diverse parental strategies in vertebrates. Identifying
2 the evolutionary origins of parenting is fundamental to understanding the relationships between sexual
3 selection, social evolution and parental care systems of contemporary Anura. Moreover, parenting has
4 been hypothesized to allow the invasion of terrestrial habitats by the ancestors of terrestrial vertebrates.
5 Using comprehensive phylogenetic analyses of frogs and toads based on data from over 1000 species that
6 represent 46 out of 55 Anura families, we test whether parental care is associated with terrestrial
7 reproduction and several life history traits. Here we show that both the duration of care and offspring
8 protection by males and females have co-evolved with terrestrial reproduction. Sexual size dimorphism is
9 also related to care, since large male size relative to female size is associated with increased paternal care.
10 Furthermore, increased egg size and reduced clutch volume are associated with increased care in bivariate
11 but not in multivariate analyses, suggesting that the relationships between care, egg size and clutch volume
12 are mediated by terrestrial reproduction. Taken together, our results suggest that parenting by males and
13 females has co-evolved, and complex parenting traits have evolved several times independently in Anura in
14 response to breeding in terrestrial environments.

15 **1. Introduction**

16 Parental care is a highly diverse social behaviour that has evolved to increase offspring survival,
17 although it tends to be costly to the caregiving parent [1–3]. Frogs and toads (Anura, hereafter frogs) are
18 characterized by a remarkable diversity of care [4,5] that is rivalled among vertebrates only by the older
19 and more speciose bony fishes [6]. Approximately 10–20% of extant frog species exhibit parental
20 behaviour, with the duration of care, the sex of the care provider and the type of care all showing unique
21 diversity and phylogenetic plasticity [5,7,8].

22 Understanding the evolutionary origin and maintenance of frog reproductive diversity is important
23 for understanding the adaptive significance of parental care both on evolutionary and ecological time
24 scales. Firstly, parental care tends to increase offspring survival especially in hostile environments
25 [9,10], and thus, it may have played a key role in the colonization of terrestrial habitats, i.e. not only in
26 the evolution of recent amphibians, but also in early tetrapods, opening the way to the subsequent
27 radiation into terrestrial niches [11]. Because parenting is one of the traits linked to expansion into non-
28 aquatic niches [12,13], identifying correlates of care in extant taxa will help us to understand major
29 transitions such as the occupation of terrestrial niches by early tetrapods. Secondly, parental care is an
30 ideal system to understand interactions between individuals that has been extensively investigated in
31 experimental and game-theoretic analyses of social interactions [14–16]. Since parenting influences
32 offspring survival and reproduction, parental decisions often impact on reproductive success and
33 population dynamics [14]. Third, phylogenetic comparative analyses are important to uncover ecological
34 and life-history predictors of parenting: they add a time axis to social interactions and link ecological and
35 evolutionary time scales [8,17,18], although these studies rarely cover a whole class-order of organisms
36 [but see 19,20].

37 Frog parental care is immensely diverse, and it includes simple types of care such as
38 constructing a foam nest or attending the eggs, as well as more elaborated forms such as internal
39 brooding of offspring [4,5,12], or cooperation between parents to attend and provide food for the
40 growing offspring [18]. Reproductive modes, i.e. the variation in nesting sites and the environment
41 where tadpoles develop, are also linked to care [5,7,21], although it is not clear whether these
42 associations hold for different care types, e.g. male-only, female-only and/or biparentally caring species,
43 or are relevant only at certain stages of reproduction [13].

44 Terrestrial environments are hostile for anamniotic eggs, given the high risks of desiccation and
45 exposure to diseases, parasites and predators although predation risk tends to be high in aquatic
46 environments as well. Therefore, egg attendance and egg protection, including urination on the eggs to
47 keep them moist, may considerably increase offspring survival in terrestrial environments [10,22]. In

48 addition, several frogs show extensive post-hatch care by carrying the tadpoles (or froglets) on their
49 backs or in specialized brooding organs [21,23]. Terrestrially reproducing frogs may have endotrophic
50 larvae that develop in a protected chamber, or directly developing embryos which skip larval phase and
51 hatch as fully-developed froglets [5,13]. These offspring rely upon parental provisions until they reach
52 the next stage of their development (e.g., metamorphosis, hatching or birth). Consequently, anurans
53 may enhance offspring care by extending the duration of care, by providing more protection for the
54 offspring and/or by increasing nutrient provisioning in nutrient-scarce environments. These behaviours
55 enable the offspring to spend a longer period of their development in a safe place [18,24,25].

56 Here we investigate three hypothesized drivers of parental care. We focus on the evolution of
57 care by scoring aspects of care on a finer scale and, to our knowledge, we present the most detailed
58 phylogenetic analyses of parenting in any taxa. First, we test whether terrestrial vs aquatic reproduction
59 relates to different care types, since caring is expected to provide protection against hostile
60 environments [5,10,13]. Second, we investigate whether life history variables including egg size and
61 clutch size correlate with the duration of care, protection and nourishment provided by any of the
62 parents. Specifically, we hypothesize that large eggs are associated with longer care and more
63 protection than small eggs [1,5,26]. Third, sexual selection has been linked to parental care since
64 Trivers' [27] seminal idea (reviewed by [1,9,28]), therefore we also investigate whether intense sexual
65 selection is associated with reduced care provisioning [29–31]. We use sexual size dimorphism (SSD)
66 as a proxy for the intensity of sexual selection [30,31]. Note that SSD as an indicator of sexual selection
67 has been debated in frogs, since SSD may reflect selections acting on females, e.g. to increase
68 fecundity [32–34]. Nonetheless, large size in males is associated with high reproductive success in
69 several species of frogs (reviewed by [5,35]) due to competition for mates or female choice [36–39], with
70 the latter processes being clearly linked to sexual selection.

71 To address these objectives, we use a comprehensive dataset that represents 46 out of 55 extant
72 anuran families. We analyse three main components of care: duration of care, protection of eggs and
73 young, and nutrient transfer to offspring. We consider these separately, because complex social traits
74 such as caring may have multiple components that evolve independently, or traded off against each
75 other and thus respond to different selection pressures [40–43]. Second, instead of combining male-only
76 care, female-only care and biparental care into a single variable (for instance, presence or absence of
77 care by either parent), we treat care by males and females separately, since ecological and life-history
78 variables may exert stronger effects on one sex than on the other. For instance, reproductive effort such
79 as egg size and clutch volume may be an important constraint of female care, whereas the intensity of
80 sexual competition may be an important constraint of male care [8,42,43]. Our work demonstrates that

81 these distinctions are important, since some of the relationships between care components and
82 ecological and life history variables differ between males and females.

83

84 **2. Methods**

85 **(a) Data collection**

86 We compiled the initial dataset from comprehensive phylogenetic comparative publications which
87 contain information on parental care in frogs [8,13,18,26,42,44,45]. Next, we augmented this dataset
88 with data from primary research publications (see Supporting Information), online databases [46,47],
89 and peer-reviewed books [5,48,49]. Our final database holds information from 1044 species; 399 of
90 these species exhibit some form of care. 46 of 55 Anura families are represented in our database that
91 hold approximately 95% of extant species (electronic supplementary material, table S1).

92

93 **(b) Parental care variables**

94 We used 4 variables for coding parental care. First, type of care was scored on a five point scale: 0—no
95 care; 1—male-only care; 2—female-only care; 3—biparental care; 4—care either by the male or the female.
96 Because the latter (i.e. uniparental care either by male or female) was reported only from seven
97 species, we excluded these species from the analyses. We considered biparental care if both parents
98 participate in offspring care. In the analysis of the number of care-providing parents, male-only care and
99 female-only care (scores 1 and 2) were combined as uniparental care, whereas score 3 was kept as
100 biparental care.

101 Second, we scored the duration of care based on discrete ontogenetic stages of the offspring
102 (egg, tadpole and juvenile care), and recorded the most advanced stage when a particular caring
103 behaviour has been reported. Care duration was defined as 0—no care; 1—egg care; 2—tadpole care; 3—
104 juvenile care. Care duration was scored separately for males and females.

105 Third, we scored offspring protection as a separate variable on a 6 point scale: 0—no protection;
106 1—offspring protected in a nest but not attended by parent(s); 2—parental attendance; 3—carrying on the
107 back of parent(s); 4—carrying in a closed organ (brooding pouch, dermal invagination, stomach or vocal
108 sack) of parent(s); 5—viviparity. This scoring was based on the logic that protection is more effective
109 when eggs or offspring are enclosed (e.g., in a brooding pouch, stomach, vocal sack, skin invagination)
110 rather than exposed on the back of the parent(s). The highest level of protection appears to be in
111 viviparous species because in these species the offspring only leave the reproductive tract of the mother
112 in a well-developed stage. Protection was scored separately for males and females.

113 Fourth, nourishment was categorized as follows: 0—exotrophic tadpoles feed mainly on external
114 food sources after depleting their yolk provided in the egg; 1—feeding tadpoles by trophic eggs or skin
115 secretion; 2—endotrophic tadpoles and directly developing species (which complete metamorphosis
116 inside the egg) reach metamorphoses nourishing only upon the egg's yolk. Nourishment was only
117 provided by the female except in two species in which the males provision the offspring (*Ecnomiohyla*
118 *raborum*, *Rhinoderma darwini* [5,50]). Consequently the latter two species were excluded from the
119 analyses of nourishment.

120 In order to investigate the consistency of our parental care scores with three published datasets
121 that scored parenting as a binary variable (presence/ absence) [13,26,44], we calculated the
122 correlations between these four datasets. The association between our dataset and the three
123 independent datasets were highly significant (electronic supplementary material, table S2).

124

125 (c) Life-history variables

126 Egg size was defined as the diameter of the egg (vitelline) in millimetres, excluding the gelatinous
127 capsule. Clutch size was defined as the number of eggs laid during one egg-laying event. We use clutch
128 volume (calculated as egg volume in cm^3 multiplied by clutch size) instead of clutch size in bivariate
129 analyses, because clutch volume appears to be a more appropriate indicator of female reproductive
130 expenditure than clutch size alone. However, to separate the potential effects of egg size and clutch
131 size in multivariate analyses, we included egg size and clutch size in the models. Snout-vent length
132 (SVL) was calculated separately for males and females, computed as mean values across all available
133 data for a given species. Body size (mean SVL) was calculated as the average of male and female
134 SVLs (in mm) for each species, whereas sexual size dimorphism was $\log_{10}(\text{SVL}_{\text{male}} / \text{SVL}_{\text{female}})$. Clutch
135 size, clutch volume and egg size were transformed to logarithmic scale to ensure homoscedasticity. If
136 several data points were available for a given species, we calculated their arithmetic mean.

137 Terrestrial reproduction and direct development were treated as binary variables (present or
138 absent), following previous classifications [13,21]. Terrestrial reproduction included floating foam nest on
139 water, as in this case the eggs themselves are in included in an air-filled chamber, and also viviparity
140 and egg-brooding in different organs (pouches, stomach, vocal sac) provided by terrestrial parents. In
141 contrast, members of the genus *Pipa* which lay eggs in water and brood by aquatic parents were
142 considered aquatic breeders. We established these categories because anuran eggs are adapted
143 primarily to aquatic development and placing them outside water exposing them to hostile conditions,
144 and- we considered the strategy for this challenge as an important aspect of parental care. We scored
145 reproduction as aquatic when the eggs are laid in water (including foam nests floating on water surface),

146 ~~and terrestrial when eggs are deposited in a terrestrial environment. The latter included species with~~
147 ~~internal brooding and viviparity.~~

148

149 **(d) Phylogeny**

150 We used a comprehensive amphibian phylogenetic tree (the consensus tree from [51]) which included
151 the majority of species in our database. Archaeobatrachians were treated as all anurans outside the
152 Neobatrachia clade, and basal Neobatrachians as all Neobatrachians outside the Hyloidea and
153 Ranoidea clade (figure 1 and electronic supplementary material, figure S1). In figure 1a–c we used
154 Grafen-transformed branch lengths for better visualisation.

155 Anuran phylogenies tend to hold consistent patterns, at least in the topology of deeper nodes
156 [51,52]. Since most variation in care is between genera and families, our results appear to be robust to
157 different phylogenetic hypotheses. Nonetheless, to check the sensitivity of our results to alternative
158 phylogenies, we re-analysed the major models using an alternative tree: a composite tree based on
159 [53]. We augmented the latter tree [53] with 145 additional species inserted next to their closest species
160 (whenever known), based on recent phylogenetic information. Nodes were collapsed to polytomies
161 when no further information was available on the phylogenetic relationships within a genus. The species
162 we added manually are listed in electronic supplementary material, table S7, along with the references
163 for their phylogenetic relationships. We use the branch lengths of the original trees [51,53]. In composite
164 phylogeny we assumed half branch length for the new species we included using ‘phytools’ package
165 [54] in R 3.1.0 [55]. Importantly, the results using the alternative phylogeny were highly consistent with
166 those of the main phylogeny (see table 1, electronic supplementary material, tables S3–S6).

167

168 **(e) Comparative analyses**

169 We tested associations between parental care and life history variables using Phylogenetic Least
170 Squares (PGLS) [56–58]. This approach controls for the non-independence among species by
171 incorporating a variance–covariance matrix that represents their phylogenetic relationships. All analyses
172 incorporated phylogenetic dependence by estimating Pagel’s λ [58]. We built separate multipredictor
173 PGLS models for each parental care variable (i.e., care duration by females, care duration by males;
174 protection by females, protection by males, nourishment by females) in which one of the care variables
175 was the dependent variable, and log clutch size, log egg size, average SVL, sexual dimorphism,
176 terrestrial reproduction and direct development were the predictors.

177 We also included the higher nodes (i.e., superfamily ID, see supporting data s2) as a factor in
178 PGLS models [53,59]. This was to control for the lack of variation in key traits within higher taxa: for

179 traits that do not vary within higher nodes, the effective level of replication and appropriate degrees of
180 freedom can be questioned. Due to the lack of variation within clades, three species-poor lineages
181 ('Crown Hyloidea' that includes Alsodidae, Ceratophryidae, Hylodidae, Odontophrynidae and
182 Rhinodermatidae, 12 species in total; Heleophrynidae, 2 species; and Sooglossioidea, 3 species) were
183 excluded from analyses that included higher node as factor. Higher nodes were not included in analyses
184 on trophic egg feeding (Nourishment excluding species in Nourishment category 2) – in this case, most
185 of the clades showed little variance to the trait.

186 We tested multicollinearity between predictors using variance inflation factor (VIF) analysis: all
187 predictors had VIF values less than 5 ($VIF_{\max} = 2.02$). In multiple regression models, we included six
188 predictor variables (see table 1) except in models of nourishment we did not include developmental
189 mode since nourishment and developmental mode were correlated by definition. All analyses were
190 carried out using R 3.1.0 [55] with 'caper' package [60].

191

192 3. Results

193 Types of care varied across Anura, with each type of care occurring in several clades (figure 1; electronic
194 supplementary material, table S1). Major clades exhibited substantial variations in sex of care provider,
195 protection and nourishment (figure 1): exceptional diversity was exhibited by five clades that include
196 Eleutherodactylidae, Dendrobatidae, Leptodactylidae and Microhylidae, figure S1).

197 Care duration, protection and nourishment were not different between species with female-only
198 care, male-only care and biparental care (Phylogenetic Generalised Least Squares PGLS, care
199 duration: figure S2, $F_{2,379} = 0.716$; $p = 0.489$; protection: $F_{2,375} = 0.502$; $p = 0.610$; nourishment: $F_{2,370} =$
200 0.502 ; $p = 0.426$), nor between uniparental and biparental species (PGLS, care duration: $F_{1,387} = 0.415$;
201 $p = 0.520$; protection: $F_{1,382} = 0.788$; $p = 0.375$; nourishment: $F_{1,378} = 1.694$; $p = 0.194$). Thus, males and
202 females provide similar extents of care in anurans. Interestingly, the extent of parental care by males
203 was associated with the extent of female care both in care duration (PGLS; $F_{1,1006} = 8.674$; $p < 0.0001$)
204 and protection ($F_{1,1005} = 54.58$; $p < 0.0001$).

205 Terrestrial reproduction was a key factor associated with parental care (figure 1). All forms of care
206 were more common in terrestrial taxa than in aquatic ones (figure 2) including protection by males (5.5%
207 and 46.5% of aquatic and terrestrial taxa, respectively), protection by females (1% and 39.0%), and
208 nourishment (5.0% and 34.5%). Terrestrial reproduction was associated with increased levels of care by
209 both males and females (figure 2 and electronic supplementary material, table S3). Consequently, the
210 number of caring parents was significantly higher in terrestrial frogs than in aquatic ones (PGLS; $F_{1,591} =$
211 80.47 ; $p < 0.0001$).

212 Large eggs and small clutches were associated with extended parenting and protection by both
213 sexes, and provisioning by the female (figure 3 and electronic supplementary material, table S4).
214 However, since egg size and clutch volume often depend on body size, we also investigated the
215 relationships between egg size, clutch volume and care by including body size as an explanatory
216 variable in phylogenetically corrected models (table S5). When body size was statistically controlled for,
217 neither egg size nor clutch volume remained correlated with care with the exception of nourishment, and
218 small clutch volume remained associated with male care (electronic supplementary material, table S5).

219 Sexual size dimorphism was associated with male care but not female care (electronic
220 supplementary material, table S4 and figure S3). However, male care was associated with increased
221 male size relative to female size (table S4). The latter relationship remained significant when absolute
222 body size was controlled for in the analysis (table S5). The latter relationship between size dimorphism
223 and body size suggests that Anura exhibit an allometric relationship between sizes of males and
224 females known as Rensch's rule [44,61] (PGLS; $F_{1,430} = 7.39$; $p = 0.007$).

225 Terrestrial reproduction remained the main predictor of both care duration and offspring
226 protection in multipredictor analyses, but not for nourishment (table 1). These results suggest that the
227 relationships between life history and care we uncovered using bivariate analyses (electronic
228 supplementary material, table S4) may be mediated by terrestrial reproduction. Nevertheless, in multi-
229 predictor models male-biased size dimorphism remained associated with male care (table 1), and
230 nourishment remained associated with clutch size and body size.

231 Trophic egg feeding (i.e, exotrophic tadpoles feed on external food sources versus tadpoles fed
232 by trophic eggs or skin secretion) was associated with sexual dimorphism and clutch volume (electronic
233 supplementary material, tables S3–S4), and these relationships remained significant after controlling for
234 body size (table S5, S6).

235

236 4. Discussion

237 Our comprehensive phylogenetic analyses of the extent of male and female care show that care is
238 extremely variable both within and among major clades of frogs. Not only the presence or absence of
239 care varies – that has been uncovered by previous studies [18,26] – but also the type and duration of
240 care are highly variable. In contrast to reptiles and mammals, in which the females are the main care
241 provider, or to birds in which biparental care is the predominant form of care [9,62], in frogs female-only,
242 male-only and biparental care are all widespread among various lineages, and the involvement of males
243 and females in care is comparable. Because in ~20% of newts and salamanders (urodeles) one of the
244 parents guards the eggs or the offspring [5,9,63,64], and caecilians in which females feed their offspring

245 using an excretion of their skin [65,66], the overall richness of caring is spectacular in amphibians. This
246 suggests that over the course of amniote evolution, the phylogenetically younger tetrapod clades (e.g.,
247 reptiles, birds and mammals) became specialised to a limited set of care patterns [62].

248 Consistently with previous studies [11–13], we found that the transition towards terrestrial
249 reproduction facilitated parental care. Moreover, our work advances the understanding of evolutionary
250 relationships by showing that terrestrial reproduction is related to all forms of both male and female
251 care, except nourishment. Thus, when early tetrapods invaded terrestrial niches, both males and
252 females may have been under the effects of selection forces to improve the survival of their offspring, so
253 that both males and females evolved various forms of care provisioning in response to terrestrial
254 reproduction. Therefore, the subsequent canalization of parental care largely towards females (e.g., in
255 reptiles and mammals) and cooperation by both sexes (in birds) may have been the result of additional
256 selective pressures that the ancestors of these clades faced during their radiation into various ecological
257 niches. This implies that the predominance of maternal care coevolved with internal fertilization [67, but
258 see 68]. In urodeles, where internal fertilization is more frequent, only phylogenetically basal external
259 fertilizers with aquatic reproduction appear to provide paternal care [5,63], although clutch attending by
260 females is widespread especially in those with terrestrial reproduction [63].

261 We also found that egg size and clutch volume are related to parental care, although these
262 associations became non-significant by including terrestriality in the models. On the one hand, terrestrial
263 egg-layers have larger eggs and smaller clutches than aquatically reproducing frogs [8,13,26], which
264 may be predicted by other factors besides parental care, such as selection on offspring size [69] or
265 protection against the hostile environment [11]. However, egg size and clutch size were no longer
266 associated with care duration and protection when body size was statistically controlled. Therefore, the
267 associations between egg size, clutch size and parenting showed by previous studies [8,13,26] may
268 have been mediated by other factors, e.g. body size and/or terrestrial reproduction. On the other hand,
269 increased nutrient transfer to the offspring is associated with reduced clutch size, which seems to be the
270 result of an increased investment to individual offspring [3] traded off against fecundity. Moreover,
271 trophic egg feeding is also associated with reduced egg size [table S6], implying that mothers may
272 reduce the cost egg production using this type of nourishment.

273 Finally, the evolutionary relationship between male care and size dimorphism has been debated
274 [32-34], and our results using fine-scaled care variables, multi-predictor models and more extensive
275 taxonomic coverage than previous studies, confirm that male care is associated with sexual size
276 dimorphism [44]. We suggest two mutually non-exclusive explanations for the increased male size
277 (relative to female size) with the extent of male care. On the one hand, sexual selection may favour
278 larger males in male caring species if females prefer large males and/or large males are more

279 successful in coercive mating [38,39], provided that these males are more successful in nursing the
280 offspring. On the other hand, male care may reduce the fecundity selection pressure on females, so that
281 female size decreases in those species in which the males provide care [44,61]. To distinguish between
282 these scenarios, further experimental and phylogenetic analyses are warranted [9,17].

283 Here we treat parental care as an invariable trait for a given species, although this assumption
284 suits some species better than others. For example, *Allobates femoralis* exhibits variation in parenting
285 since females transport tadpoles but this behaviour is only provoked by the absence of the father that is
286 normally the care-providing parent [41]. Therefore, future phylogenetic analyses should pay attention to
287 the flexibility of care provisioning [41,70]. Care provision can be further tuned by variation in the
288 ecological [25,71,72] or social environment [41], and this plasticity not only enables better adaptation to
289 seasonal and unpredictable changes of the environment, but it may also act as the origin of evolutionary
290 changes in the extent of care [41,45] or in parental roles [41,43,45]. Field-based and laboratory-based
291 studies will likely add more examples for this plasticity and would help in identifying environmental
292 factors which provokes shifts.

293 In summary, parental care is predicted by ecological and life history variables in frogs. Care is a
294 complex social trait and specific aspects of care have different predictors in males and females. Further
295 analyses are needed to investigate the impacts of climate, reproductive modes and mating systems on
296 care strategies. Since new forms of parental care are cropping up [71,72], field-based studies of yet
297 unstudied species are needed to explore breeding systems (including parenting) in frogs that live in
298 remote areas and/or inhabit extreme environments. Taken together, studies of anuran parental care
299 provide important contributions to the understanding of reproduction, evolution and diversification in the
300 most threatened vertebrate class of the Anthropocene.

301

302 **Data accessibility.** All relevant data are within the paper and its Supporting Information files, and will be available in an
303 appropriate public repository after acceptance of the manuscript.

304 **Authors' contributions.** BV and TS conceived the study. BV, ZV, RPF and TS designed the analyses, BV collected data,
305 BV and ZV conducted analyses. All authors wrote the paper.

306 **Competing interests.** The authors have declared that no competing interests exist.

307 **Funding.** The authors were supported by the Hungarian Scientific Research Fund (NKFIH 116310, KKP-126949). TS was
308 also funded by a Wolfson Merit Award from the Royal Society.

309 **Acknowledgements.** E. Mizsei helped constructing the figures. We thank R. A. Pyron for providing phylogenetic data, G.
310 Katona for his help in data collection. We appreciate the comments of I. Gomez-Mestre, L. Kratochvil, K. Summers and two
311 anonymous reviewers, whose suggestions substantially improved our work.

312

313 **References**

- 314 1. Clutton-Brock TH. 1991 *The evolution of parental care*. Princeton: Princeton Univ. Press.
- 315 2. Székely T, Moore AJ, Komdeur J. 2010 *Social behaviour: genes, ecology and evolution*.
- 316 Cambridge: Cambridge Univ. Press.
- 317 3. Smiseth PT, Kölliker M, Royle NJ. 2012 What is parental care? In *The evolution of parental care*
- 318 (eds Royle NJ, Smiseth PT, Kölliker M), pp. 1 – 17. Oxford: Oxford Univ. Press.
- 319 4. Crump ML. 1995 Parental care. In: *Amphibian biology, volume 2: Social behavior* (eds
- 320 Heathcote H, Sullivan BK), pp. 518 – 567. Chipping Norton: Surrey Beatty & Sons.
- 321 5. Wells KD 2007. Parental care. In *The ecology and behaviour of amphibians* (Wells KD).
- 322 Chicago and London: Univ. of Chicago Press, pp. 516 – 556.
- 323 6. Mank JE, Promislow DEL, Avise JC 2005 Phylogenetic perspectives in the evolution of parental
- 324 care in ray-finned fishes. *Evolution* **59**, 1570 – 1578. (doi: 10.1554/04-734)
- 325 7. Duellman WE, Trueb L 1986 *Biology of amphibians*. New York: McGraw-Hill.
- 326 8. Summers K, McKeon CS, Heying H, Patrick W. 2007 Social and environmental influences on
- 327 egg size evolution in frogs. *J. Zool.* **271**, 225 – 232. (doi: 10.1111/j.1469-7998.2006.00213.x)
- 328 9. Balshine S. 2012 Patterns of parental care in vertebrates. In *The evolution of parental care* (eds
- 329 Royle NJ, Smiseth PT, Kölliker M). Oxford: Oxford Univ. Press, pp. 62 – 80.
- 330 10. Poo S, Bickford DP. 2013 The adaptive significance of egg attendance in a South-East Asian
- 331 tree frog. *Ethology* **119**, 1 – 9. (doi: 10.1111/eth.12108)
- 332 11. Martin KL, Carter AL 2013 Brave new propagules: terrestrial embryos in anamniotic eggs.
- 333 *Integr. Comp. Biol.* **53**, 233 – 247. (doi: 10.1093/icb/ict018)
- 334 12. Crump ML. 1996 Parental care among the Amphibia. *Adv. Stud. Behav.* **25**, 109 – 144. (doi:
- 335 10.1016/S0065-3454(08)60331-9)
- 336 13. Gomez-Mestre I, Pyron RA, Wiens JJ. 2012 Phylogenetic analyses reveal unexpected patterns
- 337 in the evolution of reproductive modes in frogs. *Evolution* **66**, 3687 – 3700. (doi: 10.1111/j.1558-
- 338 5646.2012.01715.x)
- 339 14. McNamara JM, Weissing FJ. 2010 Evolutionary game theory. In: *Social behaviour: genes,*
- 340 *ecology and evolution* (eds Székely T, Moore AJ, Komdeur J), pp. 88 – 106. Cambridge:
- 341 Cambridge Univ. Press.
- 342 15. Houston AI, Székely T, McNamara JM. 2013 The parental investment models of Maynard
- 343 Smith: a retrospective and prospective view. *Anim. Behav.* **86**, 667 – 674. (doi:
- 344 10.1016/j.anbehav.2013.08.001)
- 345 16. Barta Z, Székely T, Liker A, Harrison F. 2014 Social role specialization promotes cooperation
- 346 between parents. *Am. Nat.* **183**, 747 – 761. (doi: 10.1086/676014)

- 347 17. Székely T, Reynolds JD 1995 Evolutionary transitions in parental care in shorebirds. *Proc. R.*
348 *Soc. B* **262**, 57 – 64. (doi: 10.1098/rspb.1995.0176)
- 349 18. Brown JL, Morales V, Summers K. 2010 A key ecological trait drove the evolution of biparental
350 care and monogamy in an amphibian. *Am. Nat.* **175**, 436 – 446. (doi: 10.1086/650727)
- 351 19. West HER, Capellini I 2016 Male care and life history traits in mammals. *Nat. Commun.* **7**,
352 11854. (doi: 10.1038/ncomms11854)
- 353 20. Remes V, Freckleton R, Tökölyi J, Liker A, Székely T 2015 The evolution of parental
354 cooperation in birds. *PNAS* **112**, 12603 – 13608. (doi: 10.1073/pnas.1512599112)
- 355 21. Haddad CFB, Prado CPA. 2005 Reproductive modes in frogs and their unexpected diversity in
356 the Atlantic Forest of Brazil. *BioScience* **55**, 208 – 217. (doi: 10.1641/0006-
357 3568(2005)055[0724:RMIFC]2.0.CO;2)
- 358 22. Bickford DP. 2004 Differential parental care behaviors of arboreal and terrestrial microhylid
359 frogs from Papua New Guinea. *Behav. Ecol. Sociobiol.* **55**, 402 – 409. (doi: 10.1007/s00265-
360 003-0717-x)
- 361 23. Köhler F, Günther R. 2008 The radiation of microhylid frogs (Amphibia: Anura) on New Guinea:
362 A mitochondrial phylogeny reveals parallel evolution of morphological and life history traits and
363 disproves the current morphology-based classifications. *Mol. Phylogenet. Evol.* **47**, 353 – 365.
364 (doi: 10.1016/j.ympev.2007.11.032)
- 365 24. Shine R. 1978 Propagule size and parental care: the “safe harbour” hypothesis. *J. Theor. Biol.*
366 **75**, 417 – 424. (doi: 10.1016/0022-5193(78)90353-3)
- 367 25. McKeon CS, Summers K. 2013 Predator driven reproductive behavior in a tropical frog. *Evol.*
368 *Ecol.* **27**, 725 – 737. (doi: 10.1007/s10682-013-9641-3)
- 369 26. Summers K, McKeon CS, Heying H. 2006 The evolution of parental care and egg size: a
370 comparative analysis in frogs. *Proc. R. Soc. B* **273**, 687 – 692. (doi: 10.1098/rspb.2005.3368)
- 371 27. Trivers RL. 1972 Parental investment and sexual selection. In *Sexual selection and the descent*
372 *of man* (ed Campbell B), pp. 136 – 179. Chicago: Aldine-Atherton.
- 373 28. Klug H, Alonso SH, Bonsall MB. 2012 Theoretical foundations of parental care. In *The evolution*
374 *of parental care* (eds Royle NJ, Smiseth PT, Kölliker M), pp. 21 – 39. Oxford: Oxford Univ.
375 Press.
- 376 29. Queller DC. 1997 Why do females care more than males? *Proc. R. Soc. Lond. B* **264**, 1555 –
377 1557. (doi: 10.1098/rspb.1997.0216)
- 378 30. Jennions MD, Kokko H. 2010 Sexual selection. In *Evolutionary behavioral ecology* (eds
379 Westneat DE, Fox CW), pp. 343 – 364. Oxford: Oxford Univ. Press.

- 380 31. Janicke T, Häderer IK, Lajeunesse MJ, Anthes N. 2016 Darwinian sex roles confirmed across
381 the animal kingdom. *Sci. Adv.* **2**, e1500983. (doi: 10.1126/sciadv.1500983)
- 382 32. Monnet JM, Cherry MI. 2002 Sexual size dimorphism in anurans. *Proc. R. Soc. Lond. B* **269**,
383 2301 – 2307. (doi: 10.1098/rspb.2002.2170)
- 384 33. Kupfer A. 2007 Sexual size dimorphism: an overview. In *Sex, size and gender roles:
385 evolutionary studies of sexual size dimorphism* (eds Fairbairn DJ, Blanckenhorn WU, Székely
386 T), pp. 50 – 59. Oxford: Oxford Univ. Press.
- 387 34. Monroe MJ, Alonzo SH. 2014 Sexual size dimorphism is not associated with the evolution of
388 parental care in frogs. *Ecol. Evol.* **4**, 3991 – 3998. (doi: 10.1002/ece3.1263)
- 389 35. Arak A. 1983 Male-male competition and mate choice in anuran amphibians. In *Mate choice* (ed
390 Bateson P), pp. 181 – 205. Cambridge: Cambridge Univ. Press.
- 391 36. Davies NB, Halliday TR 1979. Competitive mate searching in male common toads, *Bufo bufo*.
392 *Anim. Behav.* **27**, 1253 – 1267. (doi: 10.1016/0003-3472(79)90070-8)
- 393 37. Ryan MJ. 1980 Female mate choice in a neotropical frog. *Science* **209**, 523 – 525. (doi:
394 10.1126/science.209.4455.523)
- 395 38. Rausch AM, Sztatecsny M, Jehle R, Ringler E, Hödl W. 2014 Male body size and parental
396 relatedness, but not nuptial colouration influence paternity success during scramble competition
397 in *Rana arvalis*. *Behaviour* **151**, 1869 – 1884. (doi: 10.1163/1568539X-00003220)
- 398 39. Vági B, Hettyey A. 2016 Intraspecific and interspecific competition for mates: *Rana temporaria*
399 males are effective satyrs of *Rana dalmatina* females. *Behav. Ecol. Sociobiol.* **70**, 1477 – 1484.
400 (doi: 10.1007/s00265-016-2156-5)
- 401 40. Székely T, Remeš V, Freckleton RP, Liker A. 2013 Why care? Inferring the evolution of complex
402 social behaviour. *J. Evol. Biol.* **26**, 1381 – 1391. (doi: 10.1111/jeb12148)
- 403 41. Ringler E, Pašukonis A, Tecumseh Fitch W, Huber L, Hödl W, Ringler M. 2015 Flexible
404 compensation of uniparental care: female poison frogs take over when males disappear. *Behav.*
405 *Ecol.* **26**, 1219 – 1225. (doi: 10.1093/beheco/arv069)
- 406 42. Zamudio KR, Bell RC, Nali RC, Haddad CFB, Prado CPA. 2016 Polyandry, predation and the
407 evolution of frog reproductive modes. *Am. Nat.* **188**, S41 – S61. (doi: 10.1086/687547)
- 408 43. Goyes Vallejos J, Grafe TU, Ahmad Sah HH, Wells KD. 2017 Calling behavior of males and
409 females of a Bornean frog with male parental care and possible sex role reversal. *Behav. Ecol.*
410 *Sociobiol.* **71**, 95. (doi: 10.1007/s00265-017-2323-3)
- 411 44. Han X, Fu J. 2013 Does life history shape sexual size dimorphism in anurans? A comparative
412 analysis. *BMC Evol. Biol.* **13**, 27. (doi: 10.1186/1471-2148-13-27)

- 413 45. Delia J, Bravo-Valencia L, Warkentin KM. 2017 Patterns of parental care in neotropical
414 glassfrogs: fieldwork alters hypotheses of sex-role evolution. *J. Evol. Biol.* **30**, 898 – 914. (doi:
415 10.1111/jeb.13059)
- 416 46. Amphibiaweb 2018 [cited 2018 March 18]. Berkeley: University of California. Available from
417 <https://www.amphibiaweb.org>.
- 418 47. IUCN. 2018 *The IUCN Red List of Threatened Species*. Version 2018-1 [cited 2018 March 18].
419 Available from <https://www.iucnredlist.org>.
- 420 48. Stuart SN, Hoffmann M, Chanson JS, Cox NA, Berridge RJ, Ramani P et al., eds 2008
421 *Threatened amphibians of the world*. Barcelona: Lynx Edition.
- 422 49. Glaw F, Vences M. 2007 *A field guide to the amphibians and reptiles of Madagascar*. Cologne:
423 Vences & Glaw Verlags GbR.
- 424 50. Hansen RW. 2012 About our cover: *Ecnomiohyla rabborum*. *Herpetological Review* **42**, 3.
- 425 51. Jetz W, Pyron RA. 2018 The interplay of past diversification and evolutionary isolation with
426 present imperilment across the amphibian tree of life. *Nat. Ecol. Evol.* (doi: 10.1038/s41559-
427 018-0515-5)
- 428 52. Feng YJ, Blackburn DC, Liang D, Hillis DM, Wake DB, Cannatella DC et al. 2017
429 Phylogenomics reveal rapid, simultaneous diversification of three major clades of Gondwanan
430 frogs at the Cretaceous–Paleogene boundary. *PNAS* **114**, E5864 – E5870. (doi:
431 10.1073/pnas.1704632114)
- 432 53. Pyron RA, Wiens JJ. 2011 A large-scale phylogeny of Amphibia including over 2800 species,
433 and a revised classification of extant frogs, salamanders, and caecilians. *Mol. Phylogenet. Evol.*
434 **61**, 543 – 583. (doi: 10.1073/pnas.1704632114)
- 435 54. Revell LJ 2012 phytools: an R package for phylogenetic comparative biology (and other things).
436 *Methods Ecol. Evol.* **3**, 217 – 223. (doi: 10.1111/j.2041-210X.2011.00169.x)
- 437 55. R-Core-Team R 2013 Version 3.1.0 [cited 18 March 2018]. *A language and environment for*
438 *statistical computing*. Available from: <http://www.r-project.org/>.
- 439 56. Martins EP, Hansen TF. 1997 Phylogenies and the comparative method: A general approach to
440 incorporating phylogenetic information into the analysis of interspecific data. *Am. Nat.* **149**, 646
441 – 667. (doi: 10.1086/303188)
- 442 57. Pagel M. 1999 Inferring the historical patterns of biological evolution. *Nature* **401**, 877 – 884.
443 (doi: 10.1038/44766)
- 444 58. Freckleton RP, Harvey PH, Pagel M. 2002 Phylogenetic analysis and comparative data: a test
445 and review of evidence. *Am. Nat.* **160**, 712 – 726. (doi: 10.1086/343873)

- 446 59. Frost DR, Grant T, Faivovich JN, Bain RH, Haas A, Haddad CFB et al. 2006 The amphibian
447 tree of life. *Bulletin of the American Museum of Natural History* **297**, 1 – 291. (doi:
448 10.1206/0003-0090(2006)297[0001:TATOL]2.0.CO;2)
- 449 60. Orme D. 2013 *The caper package: comparative analysis of phylogenetics and evolution in R*. R
450 package version, 5 [cited 18 March 2018]. Available from: [https://cran.r-](https://cran.r-project.org/web/packages/caper/)
451 [project.org/web/packages/caper/](https://cran.r-project.org/web/packages/caper/)
- 452 61. Fairbairn DJ, Blanckenhorn WU, Székely T. 2007 *Sex, size and gender roles: evolutionary*
453 *studies of sexual size dimorphism*. Oxford: Oxford Univ. Press.
- 454 62. Reynolds JD, Goodwin NB, Freckleton RP. 2002 Evolutionary transitions in parental care and
455 live-bearing in Vertebrates. *Phil. Trans. Roy. Soc.* **357**, 269 – 281. (doi:
456 10.1098/rstb.2001.0930)
- 457 63. Nussbaum RA 1985 *The evolution of parental care in salamanders*. Ann Arbor: The University
458 of Michigan Press.
- 459 64. Tóth Z, Hoi H, Hettyey A 2011 Intraspecific variation in the egg-wrapping behaviour of female
460 smooth newts, *Lissotriton vulgaris*. *Amphibia-Reptilia* **32**:77 – 82. (doi:
461 10.1163/017353710X543001)
- 462 65. Kupfer A, Müller H, Antoniazzi AM, Jared C, Greven H, Nussbaum RA et al. 2006 Parental
463 investment by skin feeding in a caecilian amphibian. *Nature* **440**, 926 – 929. (doi:
464 0.1038/nature04403)
- 465 66. Kupfer A, Maxwell E, Reinhard S, Kuehnel S 2016 The evolution of parental investment in
466 caecilian amphibians: a comparative approach. *Biol. J. Linn. Soc.* **119**, 4 – 14. (doi:
467 10.1111/bij.12805)
- 468 67. Gross MR, Shine R 1981 Parental care and the mode of fertilization in ectothermic vertebrates.
469 *Evolution* **35**, 775-793. (doi: 10.1111/j.1558-5646.1981.tb04937.x)
- 470 68. Beck CW 1998 Mode of fertilization and parental care in anurans. *Anim. Behav.* **55**, 439 – 449.
471 (doi: 10.1006/anbe.1997.0619)
- 472 69. Nussbaum RA. 1987 Parental care and egg size in salamanders: An examination of the safe
473 harbor hypothesis. *Res. Popul. Ecol.* **29**, 27 (doi: 10.1007/BF02515423)
- 474 70. Simon MP. 1983 The ecology of parental care in a terrestrial breeding frog from New Guinea.
475 *Behav. Ecol. Sociobiol.* **14**, 61 – 67. (doi: 10.1007/BF00366657)
- 476 71. Poelman EH, van Wijngaarden RPA, Raaijmakers CE. 2013 Amazon poison frogs (*Ranitomeya*
477 *amazonica*) use different phytohelm characteristics to determine their suitability for egg and
478 tadpole deposition. *Evol. Ecol.* **27**, 661 – 647. (doi: 10.1007/s10682-013-9633-3)

- 479 72. Schulte LM, Lötters S. 2013 The power of the seasons: rainfall triggers parental care in poison
480 frogs. *Evol. Ecol.* **27**, 711 – 723. (doi: 10.1007/s10682-013-9637-z)
- 481 73. Gururaja KV, Dinesh KP, Priti H, Ravikath G. 2014 Mud-packing frog: a novel breeding
482 behaviour and parental care in a stream-dwelling new species of *Nyctibatrachus* (Amphibia,
483 Anura, Nyctibatrachidae). *Zootaxa* **3796**, 033 – 061. (doi: 10.11646/zootaxa.3796.1.2)
- 484 74. Iskandar DT, Evans BJ, McGuire AJ. 2014 A novel reproductive mode in frogs: a new species
485 of fanged frog with internal fertilization and birth of tadpoles. *PLoS ONE* **9**, e115884. (doi:
486 10.1371/journal.pone.0119988)

488 **Figure legends**

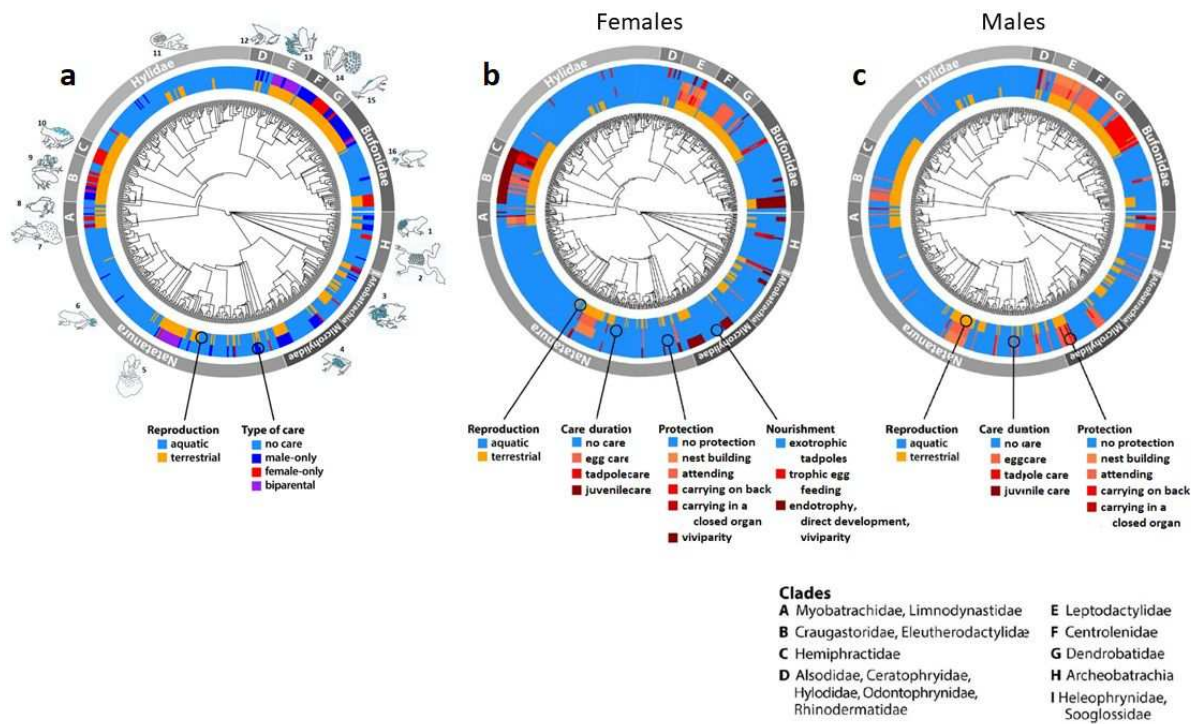
489 **Figure 1.** Phylogenetic distribution of parental care and breeding habitat in frogs. (aA) Type of care (592
 490 species). (1) Alytidae (*Alytes* sp., male egg transport), (2) Pipidae (*Pipa* sp., eggs embedded in the
 491 dorsal skin of female), (3) Hemisotidae (*Hemisus* sp, tadpole guarding by the female), (4) Microhylidae
 492 (*Sphenophryne cornuta*, juvenile transport by the male), (5) Rhacophoridae (*Rhacophorus* sp., foam
 493 nest made by both parents), (6) Dicroglossidae (*Limnonectes larvaepartus*, viviparity: live birth to
 494 larvae), (7) Limnodynastidae (*Limnodynastes peronii*, foam nest made by the female), (8)
 495 Myobatrachidae (*Assa darlingtoni*, male carry tadpoles in inguinal pouches), (9) Eleutherodactylidae
 496 (*Eleutherodactylus coqui*, direct developing eggs guarded by the male), (10) Hemiphractidae
 497 (*Flectonotus* sp., eggs carried in dorsal pouch of the female), (11) Hylidae (*Hypsiboas boans*, male
 498 guard eggs in constructed mud pool), (12) Rhinodermatidae (*Rhinoderma darwini*, tadpoles reared in
 499 vocal sac of the male), (13) Leptodactylidae (*Leptodactylus podicipinus*, the pair constructs the foam
 500 nest, the female guard the tadpoles), (14) Dendrobatidae (*Ranitomeya imitator*, the male transports
 501 tadpoles, the female feeds tadpoles in cooperation with the male), (16) Bufonidae (*Nimbaphrynoides*
 502 sp., viviparity: live birth to toadlets). (bB) Diversity of female care (care duration, protection and
 503 nourishment, 594 species). (cC) Diversity of male care (care duration and protection, 593 species).
 504 Grafen-transformed branch lengths are shown. 0 refers to no care in a particular trait, whereas 3, 5 and
 505 2 refer to the most advanced stage in offspring development in care duration, protection (for males and
 506 females separately) and nourishment (for females), respectively.

507
 508 **Figure 2.** Care duration, offspring protection and nourishment in relation to aquatic and terrestrial
 509 reproduction in frogs. Number of species exhibiting different extent of care duration, offspring protection
 510 and nourishment (on the left) and the extent of female and male parental care in aquatic and terrestrial
 511 species (mean + SD; on the right). Red shades represent female care, blue shades represent male
 512 care.

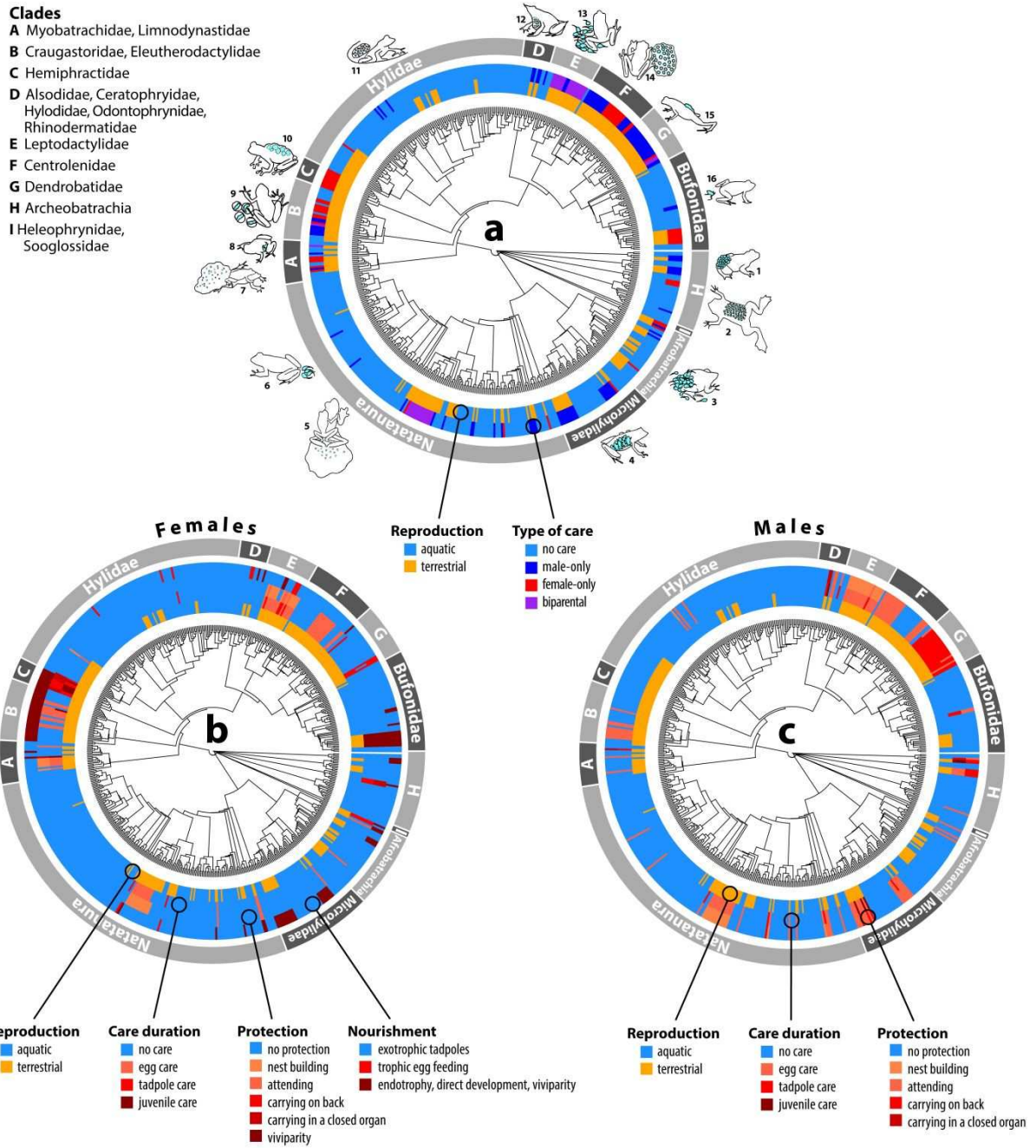
513
 514 **Figure 3.** Parental care in relation to life histories in frogs. Egg size and clutch volume are plotted
 515 against offspring care, protection and nourishment in females (red) and males (blue, *see statistics in*
 516 *electronic supplementary material, table S4–S5*). The variables were scored as follows. Care duration:
 517 0–no care; 1–egg care; 2–tadpole care; 3–juvenile care; Protection: 0–no protection; 1–nest building; 2–
 518 attending; 3–carrying on back; 4–carrying in a closed organ; 5–viviparity; Nourishment: 0–exotrophic
 519 tadpoles; 1–trophic egg feeding; 2–endotrophic tadpoles, direct development or viviparity.

521

522 **Figure 1**



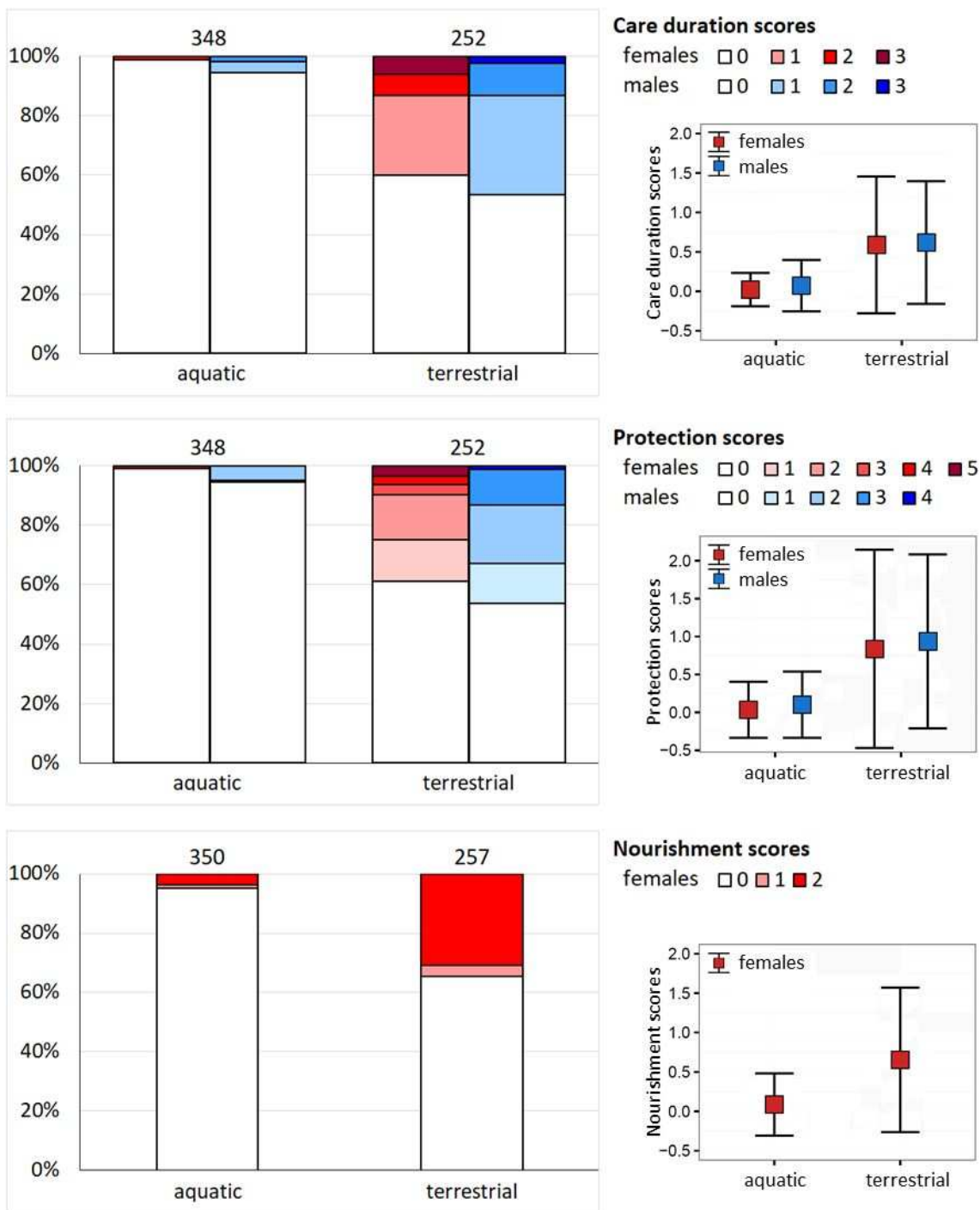
523



524

525

527
528 **Figure 2**

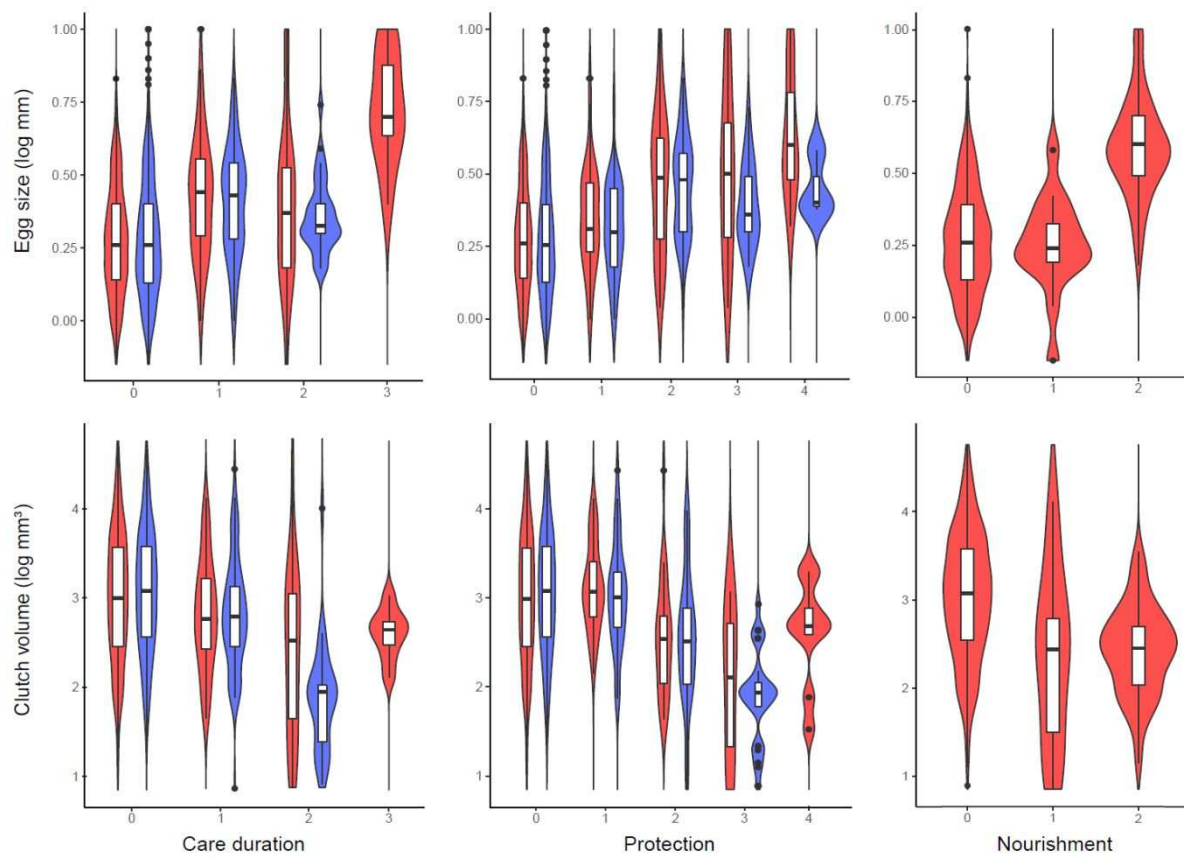


529

531

532 **Figure 3**

533



534

535

537 **Table 1.** Parental care in relation to ecology, life-history and sexual dimorphism in Anura using
538 phylogenetically corrected generalized linear squares (PGLS) models. Multipredictor PGLS models for
539 each care variable are provided separately for males and females; note that only females provide
540 nourishment. Higher node was included in the models except for nourishment (see Methods). Italics
541 indicate significant predictors. Egg size is provided as diameter in mm. Clutch volume is calculated as
542 egg volume \times clutch size and provided as mm³. Clutch volume and egg size were log-transformed prior
543 to the analyses. Body size refers to the average snout-vent length (SVL) in mm. Sexual size dimorphism
544 was calculated as $\log_{10}(SVL_{\text{male}} / SVL_{\text{female}})$. We provide parameter estimates with standard error ($\beta \pm$
545 *SE*), the corresponding *t* and *P* values, and the adjusted R^2 for the model including $F(df_{\text{effect}}, df_{\text{error}})$ and
546 *P* values, respectively.

Care duration	by females			by males		
	$\beta \pm SE$	<i>T</i>	<i>P</i>	$\beta \pm SE$	<i>t</i>	<i>P</i>
Terrestrial reproduction	0.227 ± 0.103	2.209	0.028	0.278 ± 0.093	3.000	0.003
Direct development	-0.386 ± 0.224	1.721	0.087	-0.015 ± 0.197	0.077	0.938
Clutch size	0.007 ± 0.056	0.130	0.897	-0.006 ± 0.053	0.110	0.913
Egg size	0.011 ± 0.177	0.061	0.951	0.009 ± 0.166	0.052	0.959
Body size	-0.001 ± 0.001	0.407	0.685	0.002 ± 0.001	1.421	0.157
Sexual dimorphism	-0.110 ± 0.388	0.282	0.778	1.070 ± 0.376	2.842	0.005
Model	0.155	2.961 (18, 175)	0.0001	0.175	3.254 (18, 174)	< 0.0001

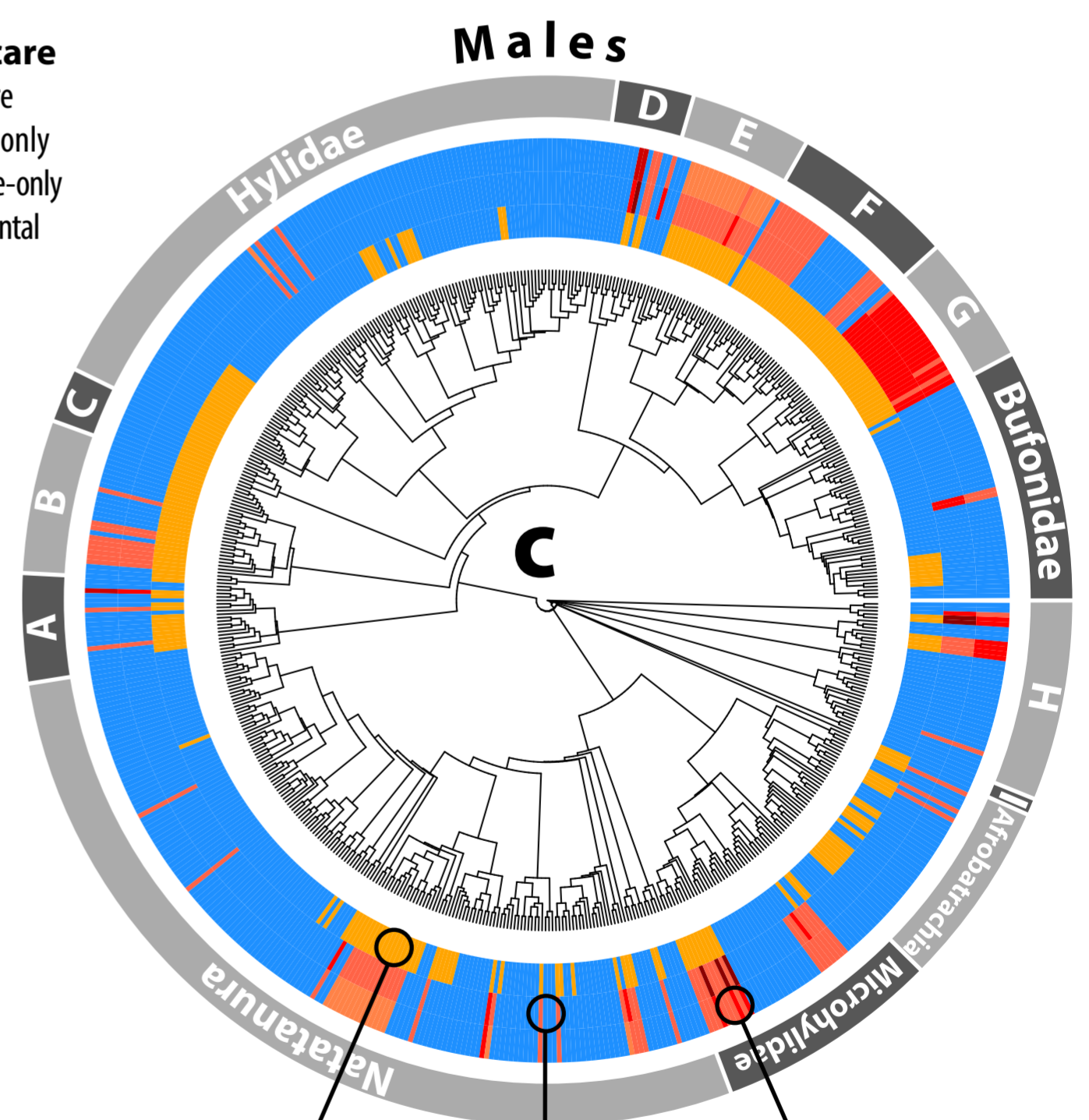
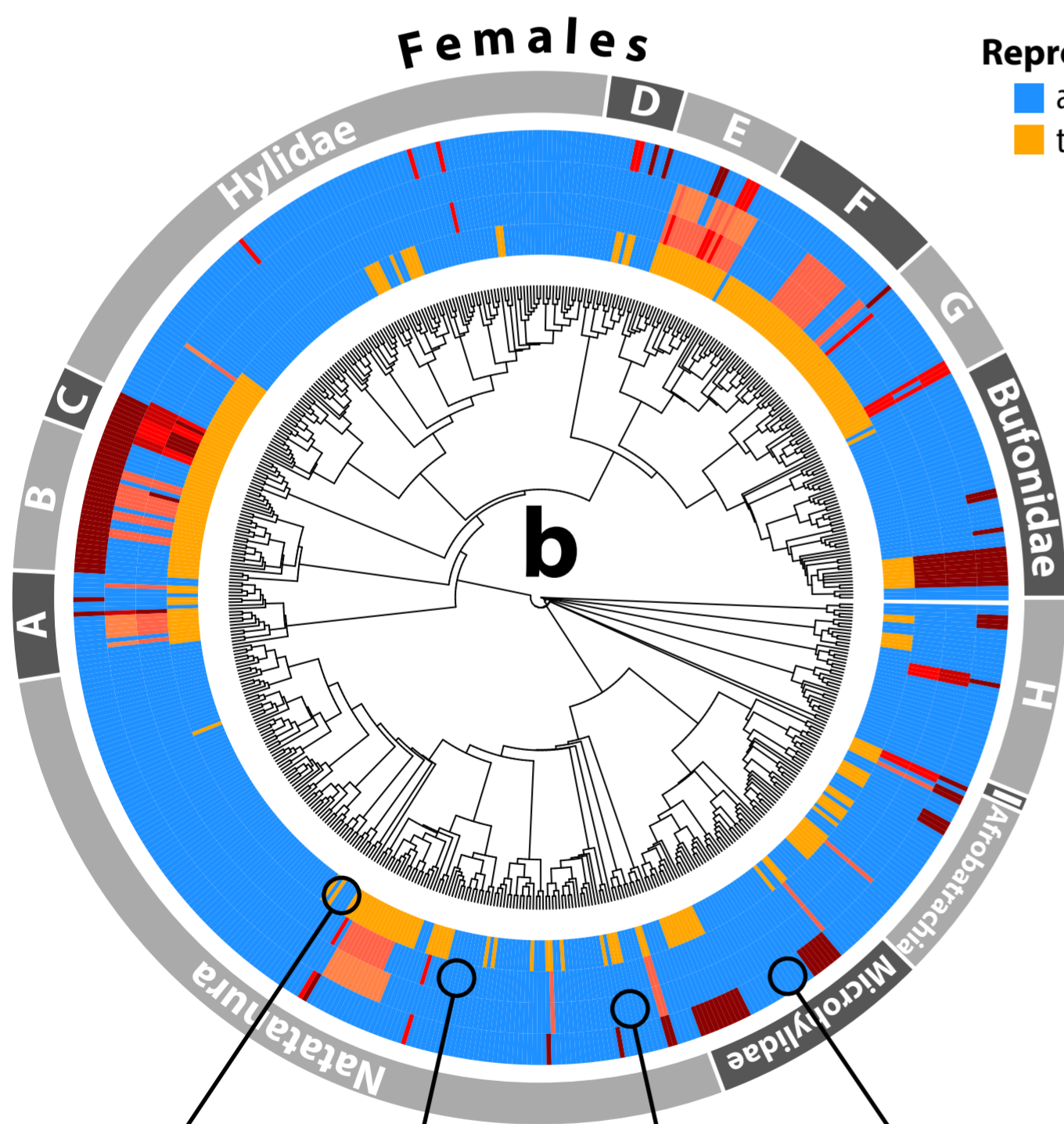
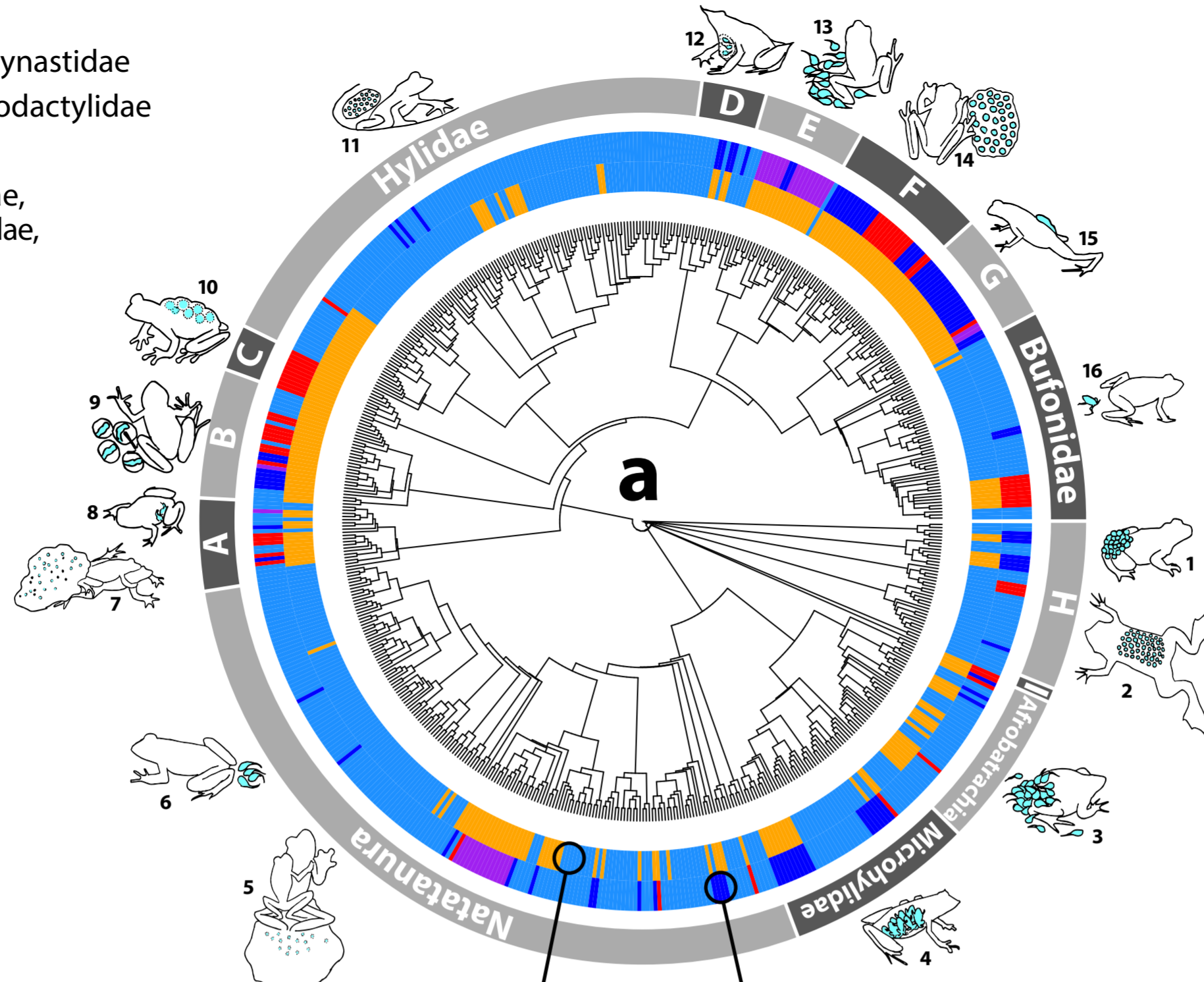
Protection	by females			by males		
	$\beta \pm SE$	<i>T</i>	<i>P</i>	$\beta \pm SE$	<i>t</i>	<i>P</i>
Terrestrial reproduction	0.426 ± 0.137	3.113	0.002	0.414 ± 0.158	2.626	0.009
Direct development	-0.452 ± 0.295	1.532	0.127	0.086 ± 0.332	0.261	0.795
Clutch size	0.045 ± 0.087	0.524	0.601	-0.016 ± 0.097	0.168	0.867
Egg size	-0.059 ± 0.285	0.209	0.835	0.084 ± 0.310	0.272	0.786
Body size	0.000 ± 0.001	0.038	0.969	0.001 ± 0.002	0.656	0.513
Sexual dimorphism	-0.208 ± 0.640	0.325	0.746	2.156 ± 0.701	3.075	0.002
Model	0.282	5.231 (18, 176)	< 0.0001	0.125	2.539 (18, 176)	< 0.001

Nourishment	by females			by females excluding species with endotrophic tadpoles, direct development and viviparity		
	$\beta \pm SE$	<i>T</i>	<i>P</i>	$\beta \pm SE$	<i>t</i>	<i>P</i>
Terrestrial reproduction	0.018 ± 0.098	0.186	0.853	0.014 ± 0.055	0.265	0.792
Clutch size	-0.180 ± 0.053	3.389	< 0.001	-0.066 ± 0.030	2.162	0.032
Egg size	0.119 ± 0.169	0.706	0.481	-0.195 ± 0.097	2.010	0.046

Body size	0.003 ± 0.001	2.043	0.042	0.003 ± 0.001	3.513	0.001
Sexual dimorphism	-0.148 ± 0.373	0.398	0.691	0.162 ± 0.347	0.208	0.437
Model	0.194	3.781 (17, 179)	< 0.0001	0.060	3.283 (5, 174)	0.007

Clades

- A** Myobatrachidae, Limnodynastidae
- B** Craugastoridae, Eleutherodactylidae
- C** Hemiphractidae
- D** Alsodidae, Ceratophryidae, Hylodidae, Odontophrynidae, Rhinodermatidae
- E** Leptodactylidae
- F** Centrolenidae
- G** Dendrobatidae
- H** Archeobatrachia
- I** Heleophrynidae, Sooglossidae



Reproduction
 ■ aquatic
 ■ terrestrial

Type of care
 ■ no care
 ■ male-only
 ■ female-only
 ■ biparental

Reproduction
 ■ aquatic
 ■ terrestrial

Care duration
 ■ no care
 ■ egg care
 ■ tadpole care
 ■ juvenile care

Protection
 ■ no protection
 ■ nest building
 ■ attending
 ■ carrying on back
 ■ carrying in a closed organ
 ■ viviparity

Nourishment
 ■ exotrophic tadpoles
 ■ trophic egg feeding
 ■ endotrophy, direct development, viviparity

Reproduction
 ■ aquatic
 ■ terrestrial

Care duration
 ■ no care
 ■ egg care
 ■ tadpole care
 ■ juvenile care

Protection
 ■ no protection
 ■ nest building
 ■ attending
 ■ carrying on back
 ■ carrying in a closed organ