



This is a repository copy of *Identification of house price bubbles using user cost in a state space model*.

White Rose Research Online URL for this paper:  
<http://eprints.whiterose.ac.uk/144004/>

Version: Accepted Version

---

**Article:**

Zhang, H. [orcid.org/0000-0002-8727-4906](http://orcid.org/0000-0002-8727-4906), Hudson, R., Metcalf, H. et al. (1 more author) (2015) Identification of house price bubbles using user cost in a state space model. *Applied Economics*, 47 (56). pp. 6088-6101. ISSN 0003-6846

<https://doi.org/10.1080/00036846.2015.1064078>

---

This is an Accepted Manuscript of an article published by Taylor & Francis in *Applied Economics* on 07 July 2015, available online:  
<http://www.tandfonline.com/10.1080/00036846.2015.1064078>

**Reuse**

Items deposited in White Rose Research Online are protected by copyright, with all rights reserved unless indicated otherwise. They may be downloaded and/or printed for private study, or other acts as permitted by national copyright laws. The publisher or other rights holders may allow further reproduction and re-use of the full text version. This is indicated by the licence information on the White Rose Research Online record for the item.

**Takedown**

If you consider content in White Rose Research Online to be in breach of UK law, please notify us by emailing [eprints@whiterose.ac.uk](mailto:eprints@whiterose.ac.uk) including the URL of the record and the reason for the withdrawal request.



[eprints@whiterose.ac.uk](mailto:eprints@whiterose.ac.uk)  
<https://eprints.whiterose.ac.uk/>

## Identification of house price bubbles using user cost in a state space model

Hanxiong Zhang, Robert Hudson, Hugh Metcalf and Viktor Manahov

This paper studies how much variation in *house prices* results from *non-fundamental factors*. We propose a relative valuation approach to quantifying a *bubble* in housing by incorporating the housing User Cost into a State-Space model. We find UK *house prices* were under-valued from January 1995 to May 2001 and subsequently moved into a *bubble* over the period to October 2012. Our results support the bounded rationality hypothesis in the long-run. However, we also find that the irrational and the rational expectation hypotheses can coexist in the short-run when explosive *bubbles* are driven by *price dynamics*.

*JEL Classification:* C51; G02; G12.

## I. Introduction

Conventional wisdom suggests that assuming rational expectations and the rational behaviour of market participants, any asset should be priced based on its *fundamental value* which is normally defined as the summation of discounted future *cash inflows*. A persistent and substantial divergence between *market price* and the *fundamental value* of an asset is evidence of a *bubble*. In an efficient market, where the current asset *price* has fully, instantaneously and correctly reflected all relevant information, there are no *bubbles*. However, there are a number of papers in the literature suggesting that *house prices* may contain a *bubble* element (for example, Case and Shiller (2003) for the US, Black et al. (2006) for the UK and Xiao and Tan (2007) for Hong Kong). From an academic perspective, it is interesting to investigate how much variation in *house prices* results from *bubbles*. From a practical perspective, the quantification of *bubbles* in *house prices* will make market participants aware of the size of their risk exposure and can help them to detect early signals of the possibility of a financial market crash (Reinhart and Rogoff, 2009). These signals drive investors to respond rationally and adjust *house prices* toward their fair value. Furthermore, policy-makers can use information about the existence and size of *bubbles* in order to stabilize the market.

Black et al. (2006) find that *intrinsic bubbles*, which depend on the Bounded Rationality Hypothesis, have an important role to play in determining actual *house prices* in the UK over the period from 1973Q4 through 2004Q3 by using a Vector Autoregression (VAR) based time-varying risk present value model. Our paper considers if their result is supported by using a User Cost Framework based State Space model and, in particular, whether the bounded rationality hypothesis describes the UK housing market in the short-run.

Regarding the study of asset *price bubbles*, the literature can be broadly classified into two groups, namely, indirect bubble tests and direct bubble tests. The indirect bubble tests attempt to overcome the econometric limitations of standard tests by implementing sophisticated cointegration and unit root tests to *price-dividend* or analogous relationships (Al-Anaswah and Wilfling, 2011). The indirect bubble tests literature includes Diba and Grossman (1988), Evans (1991) and McMillan (2007) and Phillips et al. (2011) for the stock market, Phillips and Yu (2011) for US *house prices* and Kivedal (2013) for UK *house prices*. One essential limitation of the indirect bubble tests is that they cannot generate a time series of the bubble component. By contrast, the direct bubble tests explicitly identify the deviation of asset prices from the determined fundamental values, and use the discrepancies to generate a *bubble* time series. The direct bubble tests includes Himmelberg et al. (2005) for the US, Black et al. (2006) for the UK and Xiao and Tan (2007) for Hong Kong. Given the fundamental value is typically inferred, rather than directly observed, the estimation of *bubbles* varies with respect to the selection of datasets and models. As our paper aims to extract a bubble time series and investigate the path of the *bubble*, the methodology of this paper follows the direct bubble tests.

Although many papers in the literature agree about the presence of *bubbles* in financial markets, there are controversies about the features of a *bubble*. Under the Rational Expectation Hypothesis, Abreu and Brunnermeier (2003) argue that an asset *bubble* can persist despite the presence of rational arbitrageurs. Rational *bubbles* occur when *asset prices* continue to rise because people believe that they will be able to sell the overpriced asset at a higher price in the future (Black et al., 2006, Diba and Grossman, 1988). Therefore, rational *bubbles* are associated with explosive conditional expectations. Housing literature supporting the rational expectation hypothesis includes Phillips and Yu (2011) for the US and Xiao and Tan (2007) for Hong Kong.

Under the Bounded Rationality Expectation Hypothesis, Froot and Obstfeld (1991) suggest *intrinsic bubbles* or *bounded rational bubbles* do not continuously diverge but periodically revert toward their *fundamental value* and are statistically correlated with fundamental variables. The bounded rationality bubble captures the idea that *asset prices* overreact to relevant information about *fundamentals*. Empirical literature supporting the bounded rationality expectation hypothesis includes Black et al. (2006) for the UK. Under the Irrational Expectation Hypothesis, *irrational bubbles*, also named *momentum bubbles*, are independent of fundamental values (Black et al., 2006). An irrational bubble results from people being driven by price alone, whereby people buy after price increases and sell after price decrease. Empirical literature supporting the irrational expectation hypothesis includes Case and Shiller (2003), Kivedal (2013) for the US, Brooks et al. (2001) and McMillan and Speight (2010) for the UK.

The majority of the empirical literature has one major drawback. It uses statistical tests to assess the rationality of *house price bubbles* over the whole of some predefined period. This means that the rationality of *house prices* is regarded as a static condition. However, it is reasonable to anticipate that the rationality of *house prices* may evolve over time due to varying underlying market factors, such as regulatory, technological and expectation changes.

We contribute to the literature in two respects. Firstly, we propose a relative valuation approach to quantifying a *bubble* in housing by incorporating the present value of housing User Cost into a State Space Model. The idea is to spot *bubbles* as they emerge, not just after they have collapsed. This approach bases the estimation of fundamental housing value on the user cost framework which takes *mortgage rates, taxes, rent levels, expected capital gain* and people's *risk premium* into account in a comprehensive assessment of all relevant factors. Subsequently, the unobservable *bubble* time series is estimated by taking advantages of a Kalman filter within a

state space model. Our approach is a relative valuation approach which contrasts to the discounted cash flow valuation approach used in many previous studies such as that of Black et al. (2006) and Xiao and Tan (2007). The key advantage of a relative valuation approach, especially when contrasted with the present value approach, is that house purchase *prices* are not necessarily the summation of discounted future values. Moreover, a relative valuation approach is much more likely to reflect people's psychology and expectations than a discounted cash flow valuation approach in the short-run, since it is an attempt to measure relative and not intrinsic value (Damodaran, 2002, p.949). The present value model also has the disadvantage of being extremely sensitive to the quality of inputs, such as the estimate of the *discount rate*.

Secondly, our results favour the bounded rational *bubbles* in the long-run. However, there is also evidence to support the *irrational and rational bubbles* can coexist in the short-run when *explosive bubbles* are driven by price dynamics. Furthermore, the rationality of *house price bubbles* evolves over time. Our results suggest that people's expectations and economic behaviour might be biased due to cognitive and psychological limitations which, in turn, indicate people might act in an irrational way in the short-run. However, people learn from their mistakes and attempt to satisfy by acting as rationally as possible in the long-run.

The remainder of the paper is structured as follows. Section II outlines the methodology of using the User Cost Framework within a State-Space Model. Section III gives a description of the data. Section IV reports the empirical results and discussion. Section V concludes the paper.

## **II. Empirical Methodology**

Given that *house price*  $p_t$  is a combination of *fundamental element*  $p_t^f$  (which is a function of the *fundamental price-rent ratio*  $pr_t^f$  and the *rental*  $r_t$ ), *non-fundamental or bubble element*  $b_t$  and

model *misspecification error*  $\varepsilon_t$  (Wu, 1997, Xiao and Tan, 2007), see equation (1), we propose an approach to quantify *housing bubbles* using a combination of market indicator and existing econometric models, namely a User Cost framework within a State Space Model.

$$p_t = f(p_t^f, b_t, \varepsilon_t) = f(pr_t^f, r_t, b_t, \varepsilon_t) = \beta_1 pr_t^f + \beta_2 r_t + \beta_3 b_t + \varepsilon_t \quad (1)$$

Throughout the paper, the lower case letters represent the natural log of the underlying variables.  $\beta_1$ ,  $\beta_2$  and  $\beta_3$  are the relevant elasticities.  $\beta_1 = \beta_2 = \beta_3 = 1$  would be the special case of equilibrium. In equation (1), the *fundamental house price-rent ratio*  $pr_t^f$  and the *bubble*  $b_t$  are not directly observable. As the first step, this paper uses the user cost framework to estimate the *fundamental house price-rent ratio*  $pr_t^f$ . As a second step it uses a linear state space model to estimate the unobservable *bubble* time series  $b_t$ .

#### *The user cost step*

The user cost of ownership and the implied *fundamental price-rent ratio* is the most complete framework to assess when *home prices* are misaligned (Finicelli, 2007) out of those in the simple market indicators.

The user cost framework suggests that people should be indifferent between renting and purchasing, given the same cost and housing attributes (Himmelberg et al., 2005). The *user cost of holding a house*, in percentage terms, is the sum of six components, as shown in equation (2).

$$UC_t = R_t^m + PT_t + MC_t + RP_t - MT_t(R_t^m + PT_t) - CG_{t+1} \quad (2)$$

$R_t^m$  is the *mortgage rate*,  $PT_t$  is the *property tax rate*,  $MC_t$  is the *depreciation rate of the property* or its *maintenance cost*,  $RP_t$  is the *risk premium* reflecting the larger uncertainty of purchasing relative to renting.  $MT_t$  is the *marginal tax rate* for the house buyer. As *nominal*

*mortgage payments* and *property taxes* are tax deductible in many tax regimes, they often provide an offsetting benefit to the home owner.  $CG_{t+1}$  is the *expected capital gain* from owning the house for one year.

In the equilibrium condition, the annual *cost of owning a house* should equal the average corresponding *market rent*, see equation (3):

$$R_t = P_t^f \times UC_t \quad (3)$$

$R_t$  is actual *market rent*,  $P_t^f$  is the *fundamental housing price*. Equation (3) implies the *fundamental house price-rent ratio* is the inverse of *user cost*, say  $P_t^f / R_t = 1/UC_t$ .

As a second step, this paper incorporates the user cost based *fundamental house price-rent ratio* into the state space model.

#### *The state space model step*

A state space model consists of two equations: a measurement equation and a state equation. The measurement equation illustrates the relation between observed variables and unobserved state variables. The state equation illustrates the dynamics of the unobserved state variables, normally in the form of a VAR( $I$ ) in the state vector.

Once a model has been expressed in a state space form, some important algorithms can be applied, the Kalman filter being central. The Kalman filter is a recursive procedure for estimating the optimal estimator of the state vector at time  $t$ , based on the information available at time  $t$ .

The Kalman filter assures the estimation of the state vector is continually updated as new information becomes available. When the disturbance and the initial state vector follow a normal



distribution, the likelihood function can be accurately calculated via what is known as the ‘prediction error decomposition’ (Hamilton, 1994, chapter 13).

Based on the existing literature (Wu, 1997, Xiao and Tan, 2007) and equation (1), this paper defines the following state space model.

Measurement equation:

$$p_t = c_1 pr_t^f + c_2 r_t + b_t + \epsilon_1 \quad (4)$$

$p_t$  is the log *house price*,  $pr_t^f$  is the log *fundamental price-rent ratio* which is calculated as  $\log(1/UC_t)$ ,  $r_t$  is the log *rent*, and  $b_t$  is the level of any *bubble* in log scale.

State equation:

$$b_t = c_3 b_{t-1} + \epsilon_2 \quad (5)$$

Where,  $c_1, c_2$  and  $c_3$  are the relevant elasticities.  $\epsilon_1$  and  $\epsilon_2$  are the *error terms* for the measurement and state equations.  $\epsilon_1 \sim NID(0, \sigma_{\epsilon_1}^2)$ ,  $\epsilon_2 \sim NID(0, \sigma_{\epsilon_2}^2)$ ,  $E(\epsilon_1, \epsilon_2') = 0$ ,  $E(\epsilon_1, b_0') = 0$  and  $E(\epsilon_2, b_0') = 0$ .  $b_0'$  is the initial state vector.  $\sigma_{\epsilon_1}^2$  and  $\sigma_{\epsilon_2}^2$  are the variances of the error terms for the measurement and state equations. To guarantee nonnegative variance estimates, variances are defined as exponential functions of the  $\epsilon_1$  and  $\epsilon_2$ . When  $c_3 > 1$ , the deviation from fundamental value  $b_t$  has an explosive path and this would support the rational bubble hypothesis (Phillips et al., 2011).

The state space model has five unknown parameters,  $\Psi = (c_1, c_2, c_3, \sigma_{\epsilon_1}^2, \sigma_{\epsilon_2}^2)'$ .  $\Psi$  are termed as hyperparameters and are estimated by Maximum Likelihood Estimation (MLE) using the Marquardt algorithm, in this paper.

Basically, one cannot determine the scale of the state variable, putting the coefficient of state variable  $b_t$  equals to 1 is one way to achieve scaling. It is not possible to both estimate a coefficient for  $b_t$  and the variance of  $\epsilon_2$  because they play effectively the same role of scaling the unobserved stationary component  $b_t$ .

There are no constants in equation (4) and equation (5), given that the expected value of housing will be zero when the *fundamental value* and *bubble* are both zero. The rationale for using an AR(1) for the bubble process is based on the assumption that people will naively extrapolate the most recent price deviation level into the next period (Wu, 1997). The state space model step simplifies the model building process relative to Wu (1997) and Black et al. (2006) while maintaining the advantages of a state space model. Unlike regular time series regressions, the stationarity of a time series is not required in a state space model (Commandeur and Koopman, 2007, p.134).

Both Wu (1997) and Xiao and Tan (2007) presume the *bubble* is rational and use the first log differenced variables in their measurement equations, therefore, they estimate changes in *bubble* size rather than the level of *bubble*. Consequently, they are unable to make an absolute statement about the proportion of *bubble* in each price index (Xiao and Tan, 2007). Furthermore, Xiao and Tan (2007) treat the model *specification error* as the state variable and then estimate the house price *bubble* as the residual of the measurement equation.

Theoretically, any factor that is not in the pricing model will contribute to the *specification errors* of that model. Thus the *bubble* component is a part of the *specification error*. If the goal of the model is to estimate a price *bubble*, one needs to decompose the *error term* into two parts, namely, the *bubble* component and the remaining *non-bubble specification error* component

(Wu, 1997, Xiao and Tan, 2007). Unfortunately, from a purely statistical point of view, there is no way to do this. Therefore, it is necessary to make an assumption, based on economic intuition, about the distribution of the *bubble* component and *non-bubble specification error* component. In contrast to Xiao and Tan (2007), we treat the *bubble* as a state variable which follows an AR(1) process. In addition, the *non bubble specification error* of a well-defined linear state space model should be an *i.i.d.* process (Commandeur and Koopman, 2007, p.134).

The state space model with user cost framework suffers from some potential drawbacks. For instance, the model assumes the *bubble* follows a linear Gaussian process. If the natural log of *bubble* is a non-linear, non-Gaussian process, the particle filter instead of the Kalman filter appears more suitable (Arulampalam et al., 2002). This refinement is left for future research.

### **III. Data Description**

The data included in this study are the UK *Halifax House Price Index* (HPI), a *House Rent Index* (HRI) which is derived from the UK *Retail Price Index* component of rents for housing, and the composite *mortgage rate* of banks and building societies from the Bank of England. The monthly UK time series data are all collected from DataStream with a time span from January 1995 to October 2013. The start and end dates are determined by the availability of data for the monthly composite mortgage rate. This paper sets  $HPI = HRI = 100$  in November 2003.

Because the annual *capital gain* at any point is calculated as the price appreciation over the next 12 months, we estimate the equations from January 1995 to October 2012, except where specifically mentioned.

The *Halifax HPI* is the UK's longest running monthly house price series with data covering the whole country. The *Halifax HPI* is calculated using hedonic regression, using mortgage

completion data from the Halifax which is the largest UK mortgage provider. Black et al. (2006) use the *Nationwide HPI* covers quarterly periods from 1973Q4 through 2004Q3 which is also calculated using hedonic regression, but using data from the Nationwide Building Society's mortgage lending. Our dataset is comparable to Black et al. (2006) but extends the study to a recent sample and provides a greater number of observations, which will enhance the power of any statistical tests employed.

Black et al. (2006) deflate all the nominal variables by the *Retail Price Index* (all items) thus providing prices in real terms. In this paper, however, all the variables are in nominal terms for two reasons. Firstly, 'there is a great deal of confusion about the role of inflation expectations in the demand for housing' (Schwab, 1982). Some argue that the *nominal interest rate* and *inflation* are major determinants of the demand for housing (Poterba, 1984). Others suggest inflation expectations are independent of the demand for housing; and that only deflated variables are relevant (Arcelus and Meltzer, 1973). Schwab (1982) suggests that the truth lies somewhere between these two extremes. Therefore, it is interesting to study whether the linkages between *house prices* and its determinants can be replicated in nominal terms. Secondly, the bulk of people when deciding between owning and renting tend to compare the cost of holding a home and renting a home per year in nominal instead of real terms (Brunnermeier and Julliard, 2008). Akerlof and Shiller (2010, p41) suggest people often fail to exclude the effect of *inflation* on their investments.

Insert Fig. 1 Here

Fig. 1 plots the *House Price Index* against the *House Rent Index* in natural log scale. Given the paper uses index data based at 100 in November 2003 to proxy *house price* and *rent*, it is not surprising to see the figure of *House Rent Index* is relatively close to the figure of the *House*

*Price Index*, even when *house prices* are significantly overvalued. Fig. 1 suggests that the UK *house prices* dramatically boomed from January 1995 to June 2007 and subsequently moved into a recession over the period to October 2012. By contrast, UK *rentals* slowly but steadily increased from January 1995 to October 2012. Over the full sample the correlation between the two variables is 0.91, while for the sub-period November 2003 through October 2012, the correlation coefficient is almost 0 which implies that house prices could be temporally independent of rentals.

Regarding the calculation of *user cost*, we follow the standard in the user cost literature in presuming that the *maintenance and depreciation rate*  $MC_t = 2\%$  per year (Finicelli, 2007, Girouard et al., 2006, Himmelberg et al., 2005). In accordance with the UK Mortgage Interest Relief at Source (MIRAS) scheme, over some historic periods, a borrower has paid the lender the interest less the tax relief. The rate of relief was 20% for 1994-1995, from 1995-96 to 1997-98 it was 15% and for 1998-99 and 1999-2000 it was 10%. The relief on mortgage interest repayments was removed on 6 April 2000. Accordingly we set the UK *marginal tax rate*  $MT_t = 20\%$  from April 1994 to March 1995,  $MT_t = 15\%$  from April 1995 to March 1998,  $MT_t = 10\%$  from April 1998 to March 2000, and  $MT_t = 0$  thereafter. We exclude *property tax* and set  $PT_t = 0$  for two reasons. Firstly, property tax payment is not deductible from income tax under the UK tax system. Secondly, in the UK, the tenant rather than the landlord is responsible for paying the *property tax*. As *property tax* is usually not included in the rent, *property tax* should also be removed from the *user cost*.

In the literature, the *expected capital gain*  $CG_t$  is often proxied by the past  $n$ -period moving average of the *Consumer Price Index* (CPI) and/or the forward looking long-run CPI (Finicelli, 2007, Himmelberg et al., 2005). However, there are several issues with these proxies. Initially, in

the UK, the calculation of CPI does not consider *house prices* due to houses being regarded as investment goods rather than consumption goods (Gooding, 2013). Secondly, using past  $n$ -period moving averages to proxy *expected capital gains* imposes a very naïve and restrictive view of the way individuals form their expectations.

Unlike previous papers in the literature, this paper uses the *ex post* realized annual *house price return* to proxy the *ex ante* expected annual *capital gain*,  $CG_{t+1}$ .

$$CG_{t+1} = \frac{P_{t+1} - P_t}{P_t} \quad (6)$$

The rationale is that if people are rational when forming their *capital gain* expectations, the expectation error should be independent and normally distributed with a mean of zero on average over time. An approach incorporating pure rational expectation is difficult to implement in reality, however, it is reasonable to estimate the historical equilibrium house prices from an *ex post* rational perspective. The unbiased annual *expected capital gain* at any point is the price appreciation over the next year so we eliminate problems of biased expectations by construction. The unbiased *expected capital gain* also captures the effect of many unobservable *fundamental factors*, such as supply restrictions and regulations.

In line with the rationale used for the *expected capital gain*  $CG_{t+1}$ , the *risk premium* of owning a house relative to renting  $RP_t$ , is calculated as the *ex post* annual *house price return* minus *ex post* annual *rental changes*.

$$RP_t = CG_{t+1} - \frac{R_{t+1} - R_t}{R_t} = \frac{P_{t+1} - P_t}{P_t} - \frac{R_{t+1} - R_t}{R_t} \quad (7)$$

McCulley (2008) argues that liquidity is not measured properly by the traditional monetary aggregate, but by people's state of mind, in particular their 'appetite for risk'. Therefore, the

dynamic *risk premium*  $RP_t$  would capture market liquidity. However, this method is redundant when estimating the perfect *capital gain* and *risk premium* beyond the end period of the sample data, as it assumes investors are *ex post* rational.

Fig. 2 plots the *fundamental price-rent ratio*  $P_t^f / R_t$ , which is the inverse of the *user cost* time series. The *fundamental house price-rent ratio* ranges from 13 to 40.66 with a mean of 20.8 and standard deviation of 6.17. In Fig. 2 the graph shows a dramatic fall right at the start of 1995 because of the cut in the *marginal tax rate* and the sharp increase of the *risk premium* and *expected capital gain*. Driven by the low *mortgage rates* and high *expected capital gain*, the ratio rebounded sharply from the local bottom of 15 in May 2002 to a peak of 40.66 by December 2011. The implied fundamental price for investors to buy a house on average is approximately 20.8 times the market *rent* between 1995 and 2013, *ceteris paribus*.

Insert Fig. 2 Here

Table 1 presents the preliminary statistics about the *house price (HPI)*, *rent (HRI)* and *fundamental price-rent ratio* using natural logs. An augmented Dickey-Fuller (ADF) unit root test shows that the three variables are non-stationary in levels at the conventional significance levels. However, the three variables are all stationary at the 5% significance level after taking first differences. The Johansen maximum eigenvalue test shows that *house price*  $p_t$ , *rent*  $r_t$  and the *fundamental price-rent ratio*  $pr_t$  are cointegrated at the 5% significance level, meaning that *house prices* have a long-run stable relationship with the *fundamental variables*. Thereby, speculative or market shocks may drive *house prices* away from market fundamentals in the short-run but fundamentals will eventually drive the *house prices* to converge to the equilibrium in the long-run.

Insert Table 1 Here

#### IV. Empirical Results and Discussion

##### *The estimation of bubbles*

Table 2 displays the empirical results of the state space model, equations (4) through (5). All the three coefficients  $c_1$ ,  $c_2$  and  $c_3$  are statistically significant different from 0 at the 1% level. According to the authors' calculation, the statistical significance for the hypothesis  $c_1 = 1$  can be rejected at the 1% significance level but the hypothesis  $c_2 = 1$  cannot be rejected at the conventional significance level. Therefore, it will be somewhat problematic to set  $c_1 = c_2 = 1$  in equation (4). An ADF unit root test shows that the *deviation*  $b_t$  is nonstationary in levels but stationary after first differencing at the 1% significance levels. In Table 2, the diagnostic tests concerning the residuals of the State Space model suggest that the residuals are independent, homoscedastic and normally distributed. Therefore, the assumptions for the state space model are fulfilled (Commandeur and Koopman, 2007, p.90).

Insert Table 2 Here

Fig. 3 plots the *deviations from fundamental value*  $b_t$ . When the price-deviation is above 0 this indicates the price is above its fundamental value and *vice versa*. From Fig. 3, the UK *house prices* are undervalued from January 1995 to May 2001 and subsequently move into being overvalued over the period to October 2012. The *deviations from fundamental value*  $b_t$  range from -22% in January 1995 to 64% in August 2007 which is indeed a quite substantial range. Hit by the Subprime Crisis, the *deviation*  $b_t$  sharply decreased to 33% by April 2009; recovered to 39% in April 2010; and decreased to 27% by October 2012. Given that the *price deviations from*



*fundamental value*  $b_t$  are substantial and persistent, the figures indicate that  $b_t$  reflects a *bubble* process.

The findings of Fig. 3 are broadly consistent with the existing UK housing literature. However, our approach is much more comprehensive and reliable than the simple *price-income ratio* and *price-rent ratio* as it takes *mortgage rates, taxes, rent levels, expected capital gain* and people's *risk premium* into account in a comprehensive assessment of all relevant factors (Girouard et al., 2006, Himmelberg et al., 2005). Compare to the findings of the *price-income ratio* and *price-rent ratio* in Girouard et al. (2006), the size of *deviations from fundamental*  $b_t$  in Fig. 3 are much more modest. Furthermore, our approach simplifies the model building process while maintaining the advantages of a state space model and shows compatible empirical findings with those of Black et al. (2006).

Insert Fig. 3 Here

Following Phillips et al. (2011), the recursive ADF statistics for the log house price  $p_t$  and log rent  $r_t$  are plotted in Fig. 4 to investigate whether the *bubbles*  $b_t$  are explosive rational bubbles or not. For each variable, we estimate the following ADF test specification:

$$x_t = \alpha + \delta x_{t-1} + \sum_{i=1}^l \beta_i \Delta x_{t-i} + \varepsilon_t, \quad \varepsilon_t \sim NID(0, \sigma^2) \quad (8)$$

The null hypothesis is  $H_0: \delta = 1$  and the right-tailed alternative hypothesis is  $H_1: \delta > 1$ . In forward recursive regressions, equation (8) is estimated repeatedly, using subsets of the sample data incremented by one observation at each pass. The first sample period is from January 1995 to December 1997. The optimal lag length is determined using the top-down procedure as in Phillips et al. (2011). The more the ADF statistics exceed the right-tailed ADF critical value, the

stronger the support for explosive behavior. If *house prices* are more explosive than *rentals* then it can be concluded that *rational bubbles* are present (Phillips et al., 2011).

It is evident from Fig. 4 that the *rental*  $r_t$  is always non-explosive. However, the *house price*  $p_t$  is explosive between October 1999 and April 2008, supporting the evidence of *rational bubbles* in the UK *house prices* prior to the Subprime Crisis. The ADF statistics for the *bubble*  $b_t$  is highly consistent with those of *house price*. The presence of *rational bubbles* suggests some non-fundamental factors such as peoples' biased forward looking expectations, played an important role in driving UK house prices from October 1999 to April 2008. The findings of Fig. 4 are roughly consistent with Phillips and Yu (2011) for US *house prices* but contrast to Black et al. (2006) for the UK.

Insert Fig. 4 Here

*What drives house price bubbles to evolve over time?*

Froot and Obstfeld (1991) suggest that the *deviations of prices from fundamental values*  $b_t$  can be interpreted by nonlinear deterministic functions of the *fundamentals* of asset value alone. When this is true, then, the deviations of prices from fundamental values are *intrinsic bubbles*. *Intrinsic bubbles* depend on the hypothesis of bounded rationality and self-fulfilling expectations. *Intrinsic bubbles* do not continuously diverge but periodically revert toward their *fundamental* value. The bounded rationality hypothesis argues that people form expectations and make decisions to help them satisfice rather than make theoretically optimal decisions. Therefore, people make mistakes in the short-run, but learn from their mistakes in the long-run. The bounded rationality hypothesis essentially implies that there is cointegration or long-run equilibrium between *fundamental factors* and house price *bubbles*. Moreover, intrinsic bubbles

will be more highly correlated with *fundamental factors* than with *prices* themselves (Black et al., 2006), meaning that the dominant driving force is *fundamentals* rather than *price* dynamics.

When the *bubbles* are not significantly related to *fundamental variables* but to lagged *price* dynamics, then, the *bubbles* are *momentum bubbles* and reflect the backward looking irrational expectation hypothesis. The irrational expectation hypothesis suggests that people buy after price increases and sell after price falls (Case and Shiller, 2003, Shiller, 1990). Alhashimi and Dwyer (2004) suggest that people buy homes infrequently, with a tiny proportion of households active at any one time. Thus changes in the behaviour of a few people could, regionally at least, have substantial influences on aggregate *house prices*. Kogan et al. (2006) demonstrate that long-run survival and asset price impact are two independent concepts. Irrational people can survive and even dominate rational people at least temporarily.

In an attempt to distinguish between the competing bounded rationality and irrationality hypotheses, Table 3 exhibits the Johansen cointegration tests for *bubbles* and the relevant variables. Cointegration is superior to correlation in terms of revealing long-run dynamic causal relationships between variables (Hamilton, 1994, chapter 19). From Table 3, *bubbles*  $b_t$  and *house prices*  $p_t$  are not cointegrated at the conventional significance levels. However, *bubbles*  $b_t$ , *fundamental price-rent ratios*  $pr_t^f$  and *rents*  $r_t$  are cointegrated at the 5% significance level. Table 3 implies that there is no long-run equilibrium between house price *bubbles* and *price* dynamics. However, there exists a stable dynamic relationship between *bubbles* and *fundamentals* in the long-run. Thereby, Table 3 supports the bounded rationality expectation hypothesis in the long-run, which is consistent with Black et al. (2006).

Insert Table 3 Here

In order to highlight the short-run dynamic characteristics of house price *bubbles* given the long-run cointegration (equilibrium) relationship, we run an Error Correction Model (ECM) as shown in equation (9).

$$\Delta b_t = \alpha + \beta_1 \Delta r_t + \beta_2 \Delta pr_t^f + \beta_3 cointeq_{t-1} + \varepsilon_t \quad (9)$$

Where  $\Delta b_t$  is the *change in house price bubbles*,  $\Delta r_t$  is the *change in rent*,  $\Delta pr_t^f$  is the *change in the fundamental price-rent ratio*,  $cointeq_{t-1}$  is the first lagged *cointegration* term generated for the bubble  $b_t$ , the fundamental price-rent ratio  $pr_t^f$  and the House Rent Index  $r_t$  over the full sample. In equation (9),  $\beta_1$  and  $\beta_2$  capture the short-run effects of *fundamental factors* on house price *bubbles*.  $\beta_3$  measures the speed of error correction at which *bubbles* adjust to the equilibrium state after an overreaction to fundamentals. From Table 4, the coefficient on the *changes in rent*  $\beta_1$  is statistically significant at a 10% significance level. Thus the *change in rent*  $\Delta r_t$  has statistically weak short-run effects on the *changes in house price bubbles*  $\Delta b_t$ , *ceteris paribus*. The coefficient for the *changes in fundamental price-rent ratio*  $\beta_2$  is statistically insignificant, which challenges the hypothesis that *fundamental price-rent ratio*  $pr_t^f$  has significant short-run effects on changes in bubbles.  $\beta_3$  is statistically significant and negative, suggesting that deviation from equilibrium are corrected at the rate of about 0.76% per month. As a comparison, Table 4 also shows the results of regressing the *changes in bubbles*  $\Delta b_t$  against the lagged *changes in house prices*  $\Delta p_{t-1}$ , see equation (10).

$$\Delta b_t = \alpha + \beta \Delta p_{t-1} + \varepsilon_t \quad (10)$$

Insert Table 4 Here

The coefficient on the lagged *changes in house prices* is 0.3046 and statistically significant at the 1% significance level, suggesting that 1% *changes in house prices* could drive subsequent house prices *bubbles* changes by 0.3% in the short-run. Thus the *changes in bubbles* are highly correlated with *price* dynamics rather than *fundamentals*, suggesting that the dominant driving force in *bubbles* is people's overreaction to house price movements rather than *fundamentals*. Thereby, Table 4 seems to support the irrational expectation hypothesis in the short-run which appears to contrast with Black et al. (2006).

We check the robustness of the irrational expectation hypothesis in the short-run by running a recursive OLS regression of equation (10). The first sample is from January 1995 to December 1997. It is evident from Fig. 5 that the coefficients for the lagged *changes in house prices* are statistically significant between May 2003 and October 2012 with values ranging from 0.21 to 0.38, which are consistent with Table 4 and supports the irrational expectation hypothesis in the short-run.

In contrast to the majority of housing literature, our findings so far suggest that the rationality of the *house prices* may evolve over time. In the short-run, *non-fundamental factors*, in particular, people's expectations of large price increases might have an amplification impact on demand if people overact to *fundamentals* and believe that *house price* increases will continue. This feedback process drives *house prices* to go up even in an explosive way for a while. Rational and irrational bubbles could coexist (e.g. in the period from May 2003 to April 2008 in the UK), when the explosion of *bubbles* are driven by *price* dynamics. When people perceive that *prices* cannot go up, *prices* could then fall as a result of diminished demand: the *bubble* bursts (Case and Shiller, 2003). In the long-run, the coordination of rational people drives *house prices* to converge to their *fundamentals*.

Insert Fig. 5 Here

## V. Conclusions

This paper studies how much variation in *house prices* results from *non-fundamental factors* by quantifying the size of *housing bubbles*. The paper contributes to the literature both methodologically and empirically. Using a user cost framework within a state space model has clear methodological advantages. As a first step, the *fundamental house price-rent ratio* is calculated using the user cost framework which has the benefit compared to many prior papers of incorporating all the relevant variables affecting house price *fundamentals*. In the second step, the method can advantageously estimate the level of any *bubble* by incorporating the *fundamental price-rent ratio* into a state space model by taking advantage of a Kalman filter.

Our empirical results indicate that UK *house prices* were undervalued from January 1995 to May 2001 and subsequently moved into a *bubble* over the period to October 2012. As a proportion, of *house price* the *bubble* ranged from -22% to 64% in log scale, which is indeed a quite substantial range. The magnitude of this range indicates that any modelling of *house prices* without the consideration of a *bubble* element, or the *non-fundamental* components, will be somewhat problematic.

From a theoretical viewpoint our results favour the bounded rationality hypothesis in the long-run. However, the results provide a strong evidence to support the coexistence of rational and the irrational expectation hypotheses in the short-run. Furthermore, in contrast to the majority of the existing literature, the results show that the rationality of house price *bubbles* evolves over time. Our empirical findings suggest that people's expectations and economic behaviours might be biased due to cognitive and psychology limitations which, in turn, indicate the market might be

inefficient at least temporarily. However, people learn from their mistakes and attempt to satisfice by acting as rationally as possible in the long-run.

From a practical perspective, the quantification of *bubbles* in house prices can make market participants aware of the size of their risk exposure and can help them to detect early signals of the possibility of a financial market crash. For financial institutions, periodically assessing the state of the housing market, rational diversification and timely rebalancing of portfolios may help them prevent losses similar to those suffered in the Subprime Crisis. Signals regarding a bubble may drive investors to respond rationally and adjust *house prices* toward their fair value. Furthermore, policy-makers can use information about the existence and size of *bubbles* in order to set policies to stabilize the market.

There are several avenues for future research in this area. The method can be applied to other markets and time periods and compared to other approaches. Detailed consideration of the various components of the user cost can also give a guide to the relative influences of different factors on house prices and the size of any bubble component. This understanding is potentially very useful for policy formation.

## References

- ABREU, D. & BRUNNERMEIER, M. K. 2003. Bubbles and crashes. *Econometrica*, 71, 173-204.
- AHKING, F. W. 2002. Model mis-specification and Johansen's co-integration analysis: an application to the US money demand. *Journal of Macroeconomics*, 24, 51-66.
- AKERLOF, G. A. & SHILLER, R. J. 2010. *Animal Spirits: How Human Psychology Drives the Economy, and Why It Matters for Global Capitalism (New in Paper)*, Princeton University Press.
- AL-ANASWAH, N. & WILFLING, B. 2011. Identification of speculative bubbles using state-space models with Markov-switching. *Journal of Banking and Finance*, 35, 1073-1086.
- ALHASHIMI, H. & DWYER, W. 2004. Is there such an entity as a housing market? *10th Annual Pacific Rim Real Estate Conference*. Bangkok.
- ARCELUS, F. & MELTZER, A. H. 1973. The markets for housing and housing services. *Journal of Money, Credit and Banking*, 5, 78-99.
- ARULAMPALAM, M. S., MASKELL, S., GORDON, N. & CLAPP, T. 2002. A tutorial on Particle Filters for online nonlinear/non-Gaussian Bayesian tracking. *Signal Processing, IEEE Transaction*, 50, 174 - 188.



- BARKOULAS, J. & BAUM, C. F. 1997. A re-examination of the fragility of evidence from cointegration-based tests of foreign exchange market efficiency. *Applied Financial Economics*, 7, 635-643.
- BLACK, A., FRASER, P. & HOESLI, M. 2006. House prices, fundamentals and bubbles. *Journal of Business Finance and Accounting*, 33, 1535-1555.
- BRUNNERMEIER, M. K. & JULLIARD, C. 2008. Money illusion and housing frenzies. *Review of Financial Studies*, 21, 135-180.
- CASE, K. E. & SHILLER, R. J. 2003. Is there a bubble in the housing market? *Brookings Papers on Economic Activity*, 34, 299-362.
- COMMANDEUR, J. J. F. & KOOPMAN, S. J. 2007. *An Introduction to State Space Time Series Analysis*, Oxford, Oxford University Press.
- DAMODARAN, A. 2002. *Investment Valuation: Tools and Techniques for Determining the Value of Any Asset*, Wiley.
- DIBA, B. T. & GROSSMAN, H. I. 1988. Explosive rational bubbles in stock prices? *The American Economic Review*, 78, 520-530.
- ENDERS, W. 2010. *Applied Econometric Time-Series*, New York, John Wiley and Sons.

- EVANS, G. W. 1991. Pitfalls in testing for explosive bubbles in asset prices. *The American Economic Review*, 81, 922-930.
- FINICELLI, A. 2007. House Price Developments and Fundamentals in the United States.
- FROOT, K. A. & OBSTFELD, M. 1991. Intrinsic bubbles: The case of stock prices. *The American Economic Review*, 81, 1189-1214.
- GIROUARD, N., KENNEDY, M., VAN DEN NOORD, P. & ANDRÉ, C. 2006. Recent house price developments: The role of fundamentals. OECD Economics Department Working Papers No. 475.
- GOODING, P. 2013. Consumer Prices Index and Retail Prices Index: The 2013 Basket of Goods and Services. Office for National Statistics.
- HAMILTON, J. D. A. 1994. *The Time Series Analysis*, Princeton University Press.
- HIMMELBERG, C., MAYER, C. & SINAI, T. 2005. Assessing high house prices: Bubbles, fundamentals and misperceptions. *Journal of Economic Perspectives*, 19, 67-92.
- KIVEDAL, B. K. 2013. Testing for rational bubbles in the US housing market. *Journal of Macroeconomics*, 38, Part B, 369-381.
- KOGAN, L., ROSS, S. A., WANG, J. & WESTERFIELD, M. M. 2006. The price impact and survival of irrational traders. *The Journal of Finance*, 61, 195-229.

- MCCULLEY, P. A. 2008. The liquidity conundrum. *CFA Institute Conference Proceedings Quarterly*, 25, 1-4.
- MCMILLAN, D. G. 2007. Bubbles in the dividend–price ratio? Evidence from an asymmetric exponential smooth-transition model. *Journal of Banking and Finance*, 31, 787-804.
- MCMILLAN, D. G. & SPEIGHT, A. 2010. Bubbles in UK house prices: evidence from ESTR models. *International Review of Applied Economics*, 24, 437-452.
- PHILLIPS, P. C. B., WU, Y. & YU, J. 2011. Explosive behavior in the 1990s NASDAQ: When did exuberance escalate asset values? *International Economic Review*, 52, 201-226.
- PHILLIPS, P. C. B. & YU, J. 2011. Dating the timeline of financial bubbles during the subprime crisis. *Quantitative Economics*, 2, 455-491.
- POTERBA, J. M. 1984. Tax subsidies to owner-occupied housing: An asset-market approach. *The Quarterly Journal of Economics*, 99, 729-752.
- REINHART, C. M. & ROGOFF, K. S. 2009. The aftermath of financial crises. *American Economic Review*, 99, 466-72.
- SCHWAB, R. M. 1982. Inflation expectations and the demand for housing. *The American Economic Review*, 72, 143-153.

SHILLER, R. J. 1990. Market volatility and investor behavior. *The American Economic Review*, 80, 58-62.

WU, Y. 1997. Rational bubbles in the stock market: Accounting for the US stock-price volatility. *Economic Inquiry*, 35, 309-319.

XIAO, Q. & TAN, G. K. R. 2007. Signal extraction with Kalman filter: A study of the Hong Kong property price bubbles. *Urban Studies*, 44, 865-888.

TABLES

**Table 1 Descriptive Statistics**

	House Price Index $p_t$	House Rent Index $r_t$	F. Price/Rent Ratio $pr_t^f$
No. of Observations	214	214	214
Mean	4.4274	4.6110	2.9989
Median	4.6054	4.6054	2.9433
Maximum	4.9631	4.8551	3.7053
Minimum	3.7645	4.3142	2.5657
Standard Deviation	0.4057	0.1448	0.2571
ADF test	-0.0456	-0.9607	-1.8733
Johansen Test		22.436** (21.132)	

Notes: F.Price/Rent ratio  $pr_t^f$  is the fundamental price-rent ratio. For Augmented Dickey-Fuller (ADF) tests, the values are statistics. The Johansen maximum eigenvalue test tests the null hypothesis that there is no cointegration against the alternative that there is at most one cointegrating vector. The figure in parenthesis under the maximum eigenvalue statistic is the 5% critical value. The Johansen maximum eigenvalue test applies to the House Price Index  $p_t$ , House Rent Index  $r_t$  and fundamental price-rent ratio  $pr_t^f$ . The ADF testing procedure follows Enders (2010). The Johansen test includes a drift but no linear deterministic in the VECM for the purpose of enhancing temporal stability (Barkoulas and Baum, 1997, Ahking, 2002). \*\* and \*\*\* stand for statistical significance at the 5% and 1% significance level, respectively. The lower case letters represent the natural log of the underlying variables. The optimal lag length for the ADF test and Johansen maximum eigenvalue test are determined by the Schwarz Information Criterion (SIC). All the three variables are stationary after first difference at the 5% significance level. Throughout the paper, the estimation sample ranges from January 1995 to October 2012, except where specifically mentioned.

**Table 2 Maximum Likelihood Estimates of Hyperparameters**

$p_t = c_1 pr_t^f + c_2 r_t + b_t + \epsilon_1$					Equation (4)
$b_t = c_3 b_{t-1} + \epsilon_2$					Equation (5)
$c_1$	$c_2$	$c_3$	$\sigma_{\epsilon_1}$	$\sigma_{\epsilon_2}$	SIC
0.047*** (0.015)	0.888*** (0.083)	0.999*** (0.004)	0.0000027	0.0147	-5.446
<b>Diagnostic testing for the standardized prediction errors of the State Space Model</b>					
Independence Test (Box- Ljung statistic)		Homoscedasticity Test (Breusch-Pagan statistic)		Normality Test (Jarque-Bera statistic)	
8.213		3.031		1.88	

Notes:  $p_t$  is the house price.  $c_1$ ,  $c_2$  and  $c_3$  are the coefficients on the fundamental price-rent ratio  $pr_t^f$ , the House Rent Index  $r_t$  and the deviation from fundamental value  $b_t$ , respectively.

$\sigma_{\epsilon_1}$  and  $\sigma_{\epsilon_2}$  are the standard deviations of error terms for the measurement and state equations.

See Fig 2 for the calculation of fundamental price-rent ratio at the raw data level. SIC refers to the Schwarz Information Criterion. Standard errors are in parentheses. \* and \*\*\* represent statistically significance at the 10% and 1% significance level, respectively. The lower case letters represent the natural log of the underlying variables. This paper uses the Marquardt algorithm to optimize the likelihood function. Following the testing procedure of Enders (2010), the ADF unit root test statistics for the deviation from fundamental value  $b_t$  and the differenced deviation from fundamental value  $\Delta b_t$  are -1.4352 and -4.3914, respectively. So, the deviation from fundamental value  $b_t$  is nonstationary in level but stationary after first difference. The null hypothesis for the Box-Ljung test is that the residuals are independent at Q(10). The null hypothesis for the Breusch-Pagan test is that the residuals are homoscedastic. The null hypothesis for the Jarque-Bera test is that the residuals follow a normal distribution.

**Table 3 Johansen Maximum Eigenvalue Cointegration Tests on Bubbles**

Variables			Maximum Eigenvalue Statistic
$b_t$	$pr_t^f$	$r_t$	23.4359**
$b_t$	$p_t$		3.9705

Notes:  $b_t$  is the bubble.  $pr_t^f$  is the fundamental price-rent ratio.  $p_t$  is the House Price Index.  $r_t$  the House Rent Index. The optimal lag length for the Johansen test is determined by the SIC. The Johansen test including a drift but no linear deterministic in the VECM. \*\* represent statistically significance at the 5% level. The null hypothesis is no cointegration.

**Table 4 Regressions of Bubbles on Fundamentals and Price Dynamics**

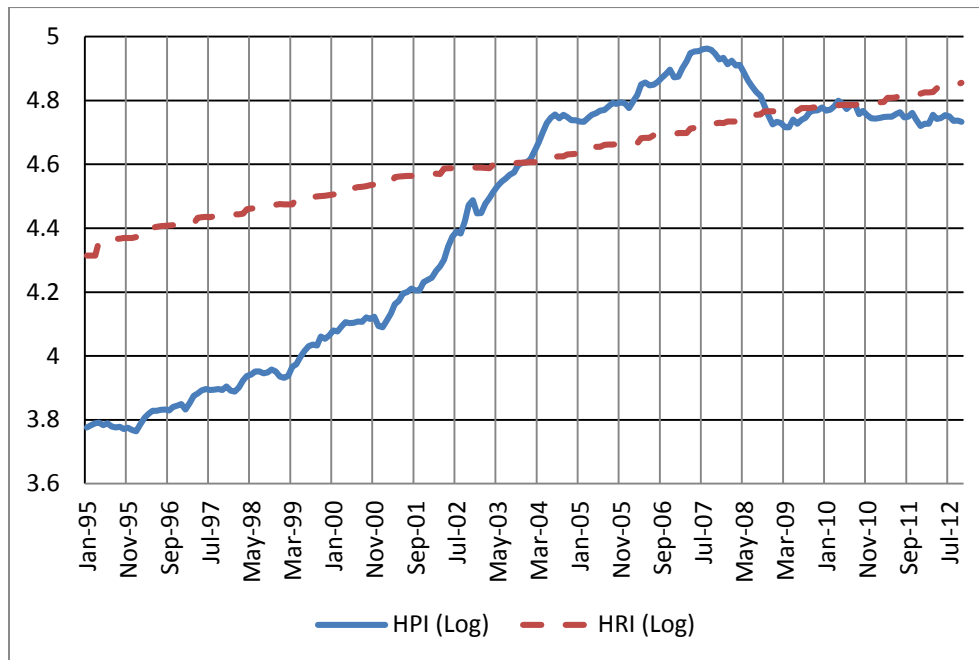
$\Delta b_t = \alpha + \beta_1 \Delta r_t + \beta_2 \Delta pr_t^f + \beta_3 cointeq_{t-1} + \varepsilon_t$				Equation (9)
$\alpha$	$\beta_1$	$\beta_2$	$\beta_3$	$R^2$
0.0036***	-0.5477*	-0.0113	-0.0076**	0.12
(0.0011)	(0.3330)	(0.0179)	(0.0034)	
$\Delta b_t = \alpha + \beta \Delta p_{t-1} + \varepsilon_t$				Equation (10)
$\alpha$	$\beta$			$R^2$
0.0009	0.3046***			0.20
(0.001)	(0.0661)			

Notes:  $\Delta b_t$  is the change in housing price bubbles,  $\Delta r_t$  is the change in rent,  $\Delta pr_t^f$  is the change in fundamental price-rent ratio,  $cointeq_{t-1}$  is the first lagged cointegration term generated for the bubble  $b_t$ , the fundamental price-rent ratio  $pr_t^f$  and the House Rent Index  $r_t$ .  $\alpha$  is constant,  $\beta_i$  is the corresponding coefficient.  $\Delta p_{t-1}$  is the first lagged changes in house prices. \*\*\* represent significance at 1% significance level. Standard errors are in parentheses. \*\* represent significant at 5% level. \* represent significant at 10% level.



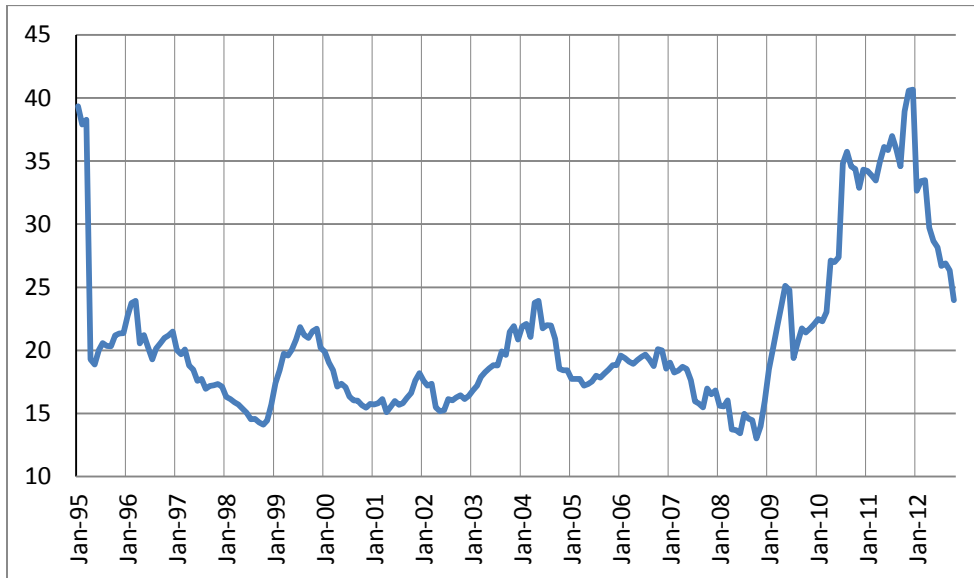
FIGURES

Figure 1 House Price Index (Log) vs. House Rent Index (Log)



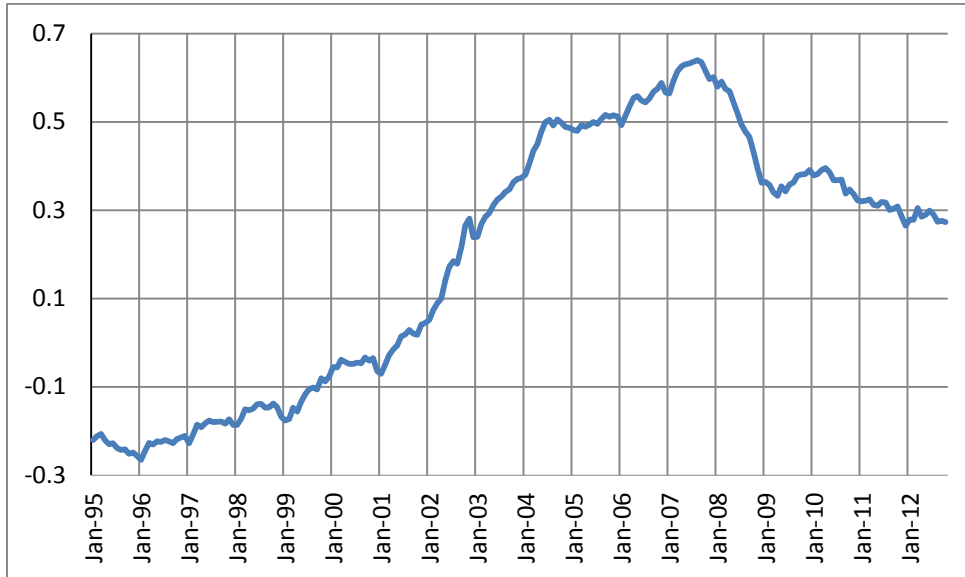
Notes: HPI (Log) and HRI (Log) stand for the Halifax House Price Index and House Rent Index in the natural log scale, respectively. The HRI is derived from the UK Retail Price Index component of rents for housing. This paper sets  $HPI = HRI = 100$  in November 2003.

**Figure 2 Fundamental Price-Rent Ratio  $P_t^f/R_t$**



Notes:  $P_t^f/R_t = 1/UC_t = 1/(R_t^m + PT_t + MC_t + RP_t - MT_t(R_t^m + PT_t) - CG_{t+1})$ .  $P_t^f/R_t$  is the Fundamental Price-Rent Ratio.  $UC_t$  is the User Cost of holding a house per year.  $R_t^m$  is the composite mortgage rate from Bank of England. Property Tax rate  $PT_t = 0$ , Maintenance Cost  $MC_t = 2\%$ , Risk Premium for the larger uncertainty of purchasing relative to renting  $RP_t$  is the difference between the house price appreciation and rent appreciation over next 12 months.  $MT_t = 20\%$  from April 1994 to March 1995,  $MT_t = 15\%$  from April 1995 to March 1998,  $MT_t = 10\%$  from April 1998 to March 2000, and  $MT_t = 0$  thereafter. Expected Capital Gain  $CG_{t+1}$  is proxied by the house price appreciation over next 12 months. The expected capital gains from November 2012 to October 2013 are missing, as the paper assumes investors are *ex post* rational.

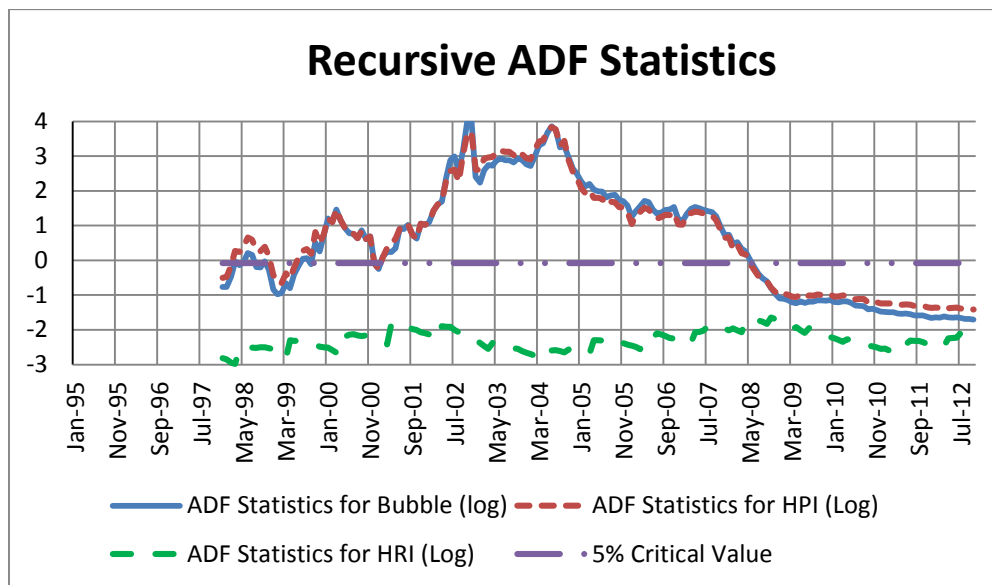
**Figure 3 Deviation from Fundamental Value  $b_t$**



Notes: See Table 2 for the estimation of deviation from fundamental value  $b_t$  in natural log scale.

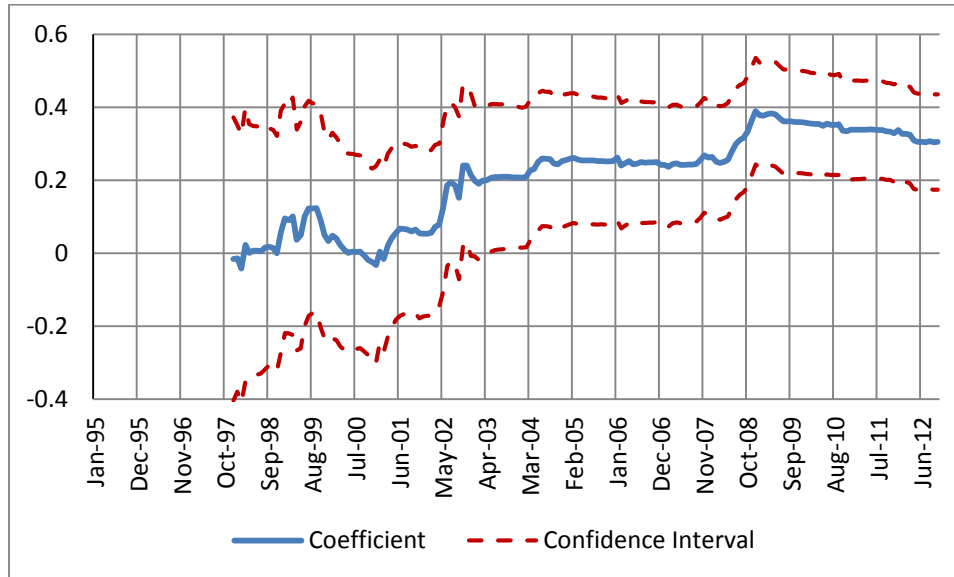
When the price-deviation is above 0 this indicates the price is above its fundamental value and *vice versa*.

**Figure 4 Recursive ADF Tests for Rational Bubbles**



Notes: The figure plots the recursive values of the ADF statistics for the house price bubble  $b_t$ , House Price Index (HPI)  $p_t$ , House Rent Index (HRI)  $r_t$  against the 5% critical value for an explosive alternative. The 5% critical value is from Phillips et al. (2011), which is quite different from the typical Dickey-Fuller 5% critical value. The first sample period is from January 1995 to December 1997. For each variable, we estimate the following ADF test specification:  $x_t = \alpha + \delta x_{t-1} + \sum_{i=1}^l \beta_i \Delta x_{t-i} + \varepsilon_t$ ,  $\varepsilon_t \sim NID(0, \sigma^2)$  as Equation (8). The null hypothesis is  $H_0: \delta = 1$  and the right-tailed alternative hypothesis is  $H_1: \delta > 1$ . The optimal lag length is determined using the top-down procedure as in Phillips et al. (2011).

**Figure 5 Recursive Testing for Irrational Bubble Hypothesis**



Notes: Recursive regression of equation (10),  $\Delta b_t = \alpha + \beta \Delta p_{t-1} + \varepsilon_t$ . The first sample is from January 1995 to December 1997. The solid line represents for the coefficient  $\beta$ . The dashed line represents the confidence interval for the coefficient at the 5% significance level. A statistically significant coefficient implies lagged changes in house prices  $\Delta p_{t-1}$  would drive the changes in house price bubbles  $\Delta b_t$ , which, in turn, support the irrational expectation hypothesis.