

# SCIENTIFIC REPORTS



OPEN

## Experimental and simulation results of the adsorption of Mo and V onto ferrihydrite

Loredana Brinza<sup>1,2</sup>, Hong Phuc Vu<sup>2,3</sup>, Mariana Neamtu<sup>1</sup> & Liane G. Benning<sup>2,4,5</sup>

This study aims to highlight discrepancies between experimental and simulation linked to the mechanisms of Mo and V adsorption onto ferrihydrite (FHY) nanoparticles. We have measured adsorption capacities and uptake efficiencies and then fitted and compared these with outputs from various geochemical and adsorption models that were run as a function of pH, surface area (SA) and ferrihydrite particles size distributions. Our results revealed that the experimental data for the Mo system could be fitted very well, but this was not the case for the V system, when a model default value for the SA of FHY of  $600 \text{ m}^2 \text{ g}^{-1}$  was used. The discrepancy in the results for the V system can be explained by the lack of specific V species and/or associated constants in databases and variation in software versions, which change the outputted chemical species. Our comparative results also confirm that any experimental variables used as modelling inputs need to be checked carefully prior to any modelling exercises.

Beside their important role as micronutrients for living organisms<sup>1–4</sup>, Mo and V are considered good paleo environmental proxies<sup>5–9</sup>, but they act also as pollutants as well as catalysts<sup>10,11</sup>. Their interactions with iron oxyhydroxides in surface and polluted waters, seawater and sediments affect their mobility and cycles in these environments. Adsorption, one of the most important interactions taking place at the mineral-water interface, strongly controls the fate and availability of Mo and V.

Ferrihydrite (FHY) is an iron oxyhydroxide often called “amorphous ferric oxide” or “hydrous ferric oxide,” which can be found in different environmental media such as soils, iron-rich or polluted waters (e.g., mine tailings and acid mine drainage), deep oceans, lake sediments, hydrothermal vents or hot- and cold-spring deposits<sup>5,12–15</sup>. FHY is often associated with a variety of other amorphous or crystalline minerals<sup>16–21</sup> and has a well-documented ability to adsorb or co-precipitate many ions including toxic or trace metals<sup>18,20,22–29</sup>. There are two types of FHY: 2-line and 6-line ferrihydrite, differing in water contents, surface areas, particle sizes and naturally crystallinity<sup>18,19</sup>. For 2-line FHY, Hiemstra and Riemsdijk<sup>30</sup> suggested that single-coordinated surface groups dominate and that these groups are present in two structural configurations: at the edge of a single Fe-octahedron or at a single corner of two adjacent Fe-octahedrons<sup>30</sup>. One of the main characteristics of FHY is its very large surface area (SA). However, yet a common value is not available and a huge range of SAs (from 120 to  $840 \text{ m}^2 \text{ g}^{-1}$ ) has been reported for synthetic and natural 2 and 6 line-FHY<sup>19,22,31</sup>. As a result of this high surface area, FHY can adsorb cations (e.g.,  $\text{Cd}^{2+}$ ,  $\text{Cu}^{2+}$ ,  $\text{Pb}^{2+}$ ,  $\text{Co}^{2+}$ ,  $\text{Mn}^{2+}$ ,  $\text{Cr}^{3+}$ ,  $\text{Cr}^{6+}$ ,  $\text{Ni}^{2+}$ ,  $\text{Zn}^{2+}$ ,  $\text{Ag}^+$ ), anions (e.g.,  $\text{PO}_4^{3-}$ ,  $\text{MoO}_4^{2-}$ ,  $\text{HVO}_4^{2-}$ ,  $\text{VO}_2(\text{OH})_2^-$ ,  $\text{VO}_3(\text{OH})^{2-}$ ,  $\text{WO}_4^{2-}$ ) and organics (herbicides: 7 chloro-3-methylquinoline-8-carboxylic acid, thi-azafluron; mugineic acid and p-hydroxybenzoic acid)<sup>19,20,32–43</sup>.

Despite the large variations in SA reported, in most sorption modelling codes, the highest values for FHY SA (i.e., 600, 700 or  $750 \text{ m}^2 \text{ g}^{-1}$ ) are most often used as defaults<sup>15,33,41,44–46</sup>. Furthermore, adsorption of metal species onto oxyhydroxides is often modelled using a variety of surface complexation models: the generalized two layer model called Diffuse Layer Model (DLM), the Constant Capacitance Model (CCM), the CD-MUSIC Layer Model (CDM)<sup>15,33,47,48</sup> or the Triple Layer Model (TLM)<sup>45,49</sup>. The selection of a particular model for a specific system depends on the chemistry of the system (e.g., metal concentration, ionic strengths, presence of other ions, etc.),

<sup>1</sup>Alexandru Ioan Cuza University of Iasi, Institute for Interdisciplinary Research, Science Research Department, Iasi, 700107, Romania. <sup>2</sup>University of Leeds, School of Earth & Environment, Earth Surface Sciences Inst, Leeds, LS2 9JT, West Yorkshire, United Kingdom. <sup>3</sup>University of Melbourne, The Faculty of Science, School of Earth Sciences, Melbourne, Victoria, 3010, Australia. <sup>4</sup>GFZ German Research Centre for Geosciences, D-14473, Potsdam, Germany. <sup>5</sup>Department of Earth Sciences, Free University of Berlin, 12249, Berlin, Germany. Correspondence and requests for materials should be addressed to L.B. (email: [loredana.brinza@uaic.ro](mailto:loredana.brinza@uaic.ro)) or L.G.B. (email: [benning@gfz-potsdam.de](mailto:benning@gfz-potsdam.de))

the number of assumptions and the experience/expertise of researchers. For example, Dzombak and Morel<sup>30</sup> recommended the DLM model as the most suitable for modelling ion adsorption onto iron oxyhydroxides<sup>32</sup>, and Gustafsson<sup>33</sup> created a version of this DML model for hydrous ferric oxides (HFO) using the Visual Minteq code<sup>33,44,50</sup>.

When we started with this current study we realized that simulations of Mo and V adsorption onto FHY as a function of pH were scarce<sup>15,46</sup>, and that those existing had only been done for systems at high ionic strength (IS). For example, Gustafsson<sup>33</sup> used the DLM and CDM models to fit Mo sorption onto FHY at ionic strength of 0.01 M. The initial fit were not very good and this led to a model optimization by generating new species and appropriate constants (i.e.,  $\text{FeOMo}(\text{OH})_5$  with  $\log K = 17.96$  for DLM and  $\text{FeOMo}(\text{OH})_5^{0.5}$  with  $\log K = 18.28$  and  $\text{FeOMoO}_3^{-1.5}$  with  $\log K = 11.17$  for CDM). Such an optimization, improved the DLM fit and after adding more species (i.e.,  $\text{Fe}_2\text{O}_2\text{MoO}^{2-}$  with  $\log K = 18.71$ ;  $\text{FeOH}_2^{2+} \dots \text{MoO}_4^{2-}$  with  $\log K = 11.06$ ) this model could thus be used to model Mo adsorption in onto HFO's in soils<sup>15,33</sup>. Similarly, using the CDM model for V sorption onto FHY, Larsson *et al.*<sup>46</sup> aimed to optimize surface complexation constants of V species at the FHY surface. He modelled this for complex systems and at high IS<sup>46</sup>, yet the results revealed that a full understanding of the adsorption is still lacking.

Information about sorption mechanism is often obtained through X-Ray Absorption Spectroscopy (XAS) measurements<sup>15,45,46,51,52</sup>. These studies showed that Mo sorbed to FHY forms an edge sharing bidentate complex at pH of 4.2 and 7.3, and an additional corner-sharing bidentate complex at pH 4.2<sup>15</sup>. XAS analyses of Mo adsorbed onto goethite indicated that with decreasing pH, the Mo (VI) coordination environment changes from a tetrahedral (inner-sphere surface species via corner- and edge-sharing attachment with iron octahedra) to an octahedral coordination. Moreover, under acidic conditions an additional  $\text{MoO}_6$  polymer attached to the octahedral iron suggested the formation of surface Mo-polymers<sup>52</sup>. For the V system, Peacock and Sherman<sup>45</sup> showed that V adsorbed onto goethite at pH between 3 and 9 as a bidentate, corner-sharing inner sphere complex, and that possibly a  $\text{VO}_2(\text{O}, \text{OH})_2$  edge sharing complex was present at a pH of 8.3<sup>45</sup>. Larsson *et al.*<sup>46</sup> also found that V adsorbs to FHY at pH values of 3.6, 3.9, 6.5 and 9.39 as an edge-sharing vanadate complex<sup>46</sup>. Despite this seeming plethora of data, the molecular configuration of Mo and V surface complexes adsorbed onto FHY surfaces remain poorly known, and additional studies covering a wider range of environmental conditions is needed in order to better develop surface complexation models.

We try to fill this gap in part by combining detailed experimental measurements of Mo and V adsorption (single ion in solution) onto FHY over the pH range between 4 to 9, over 22 h, and also at low IS (0.001) with modelling using different codes and databases. The results will improve our understanding of Mo and V uptake processes onto FHY.

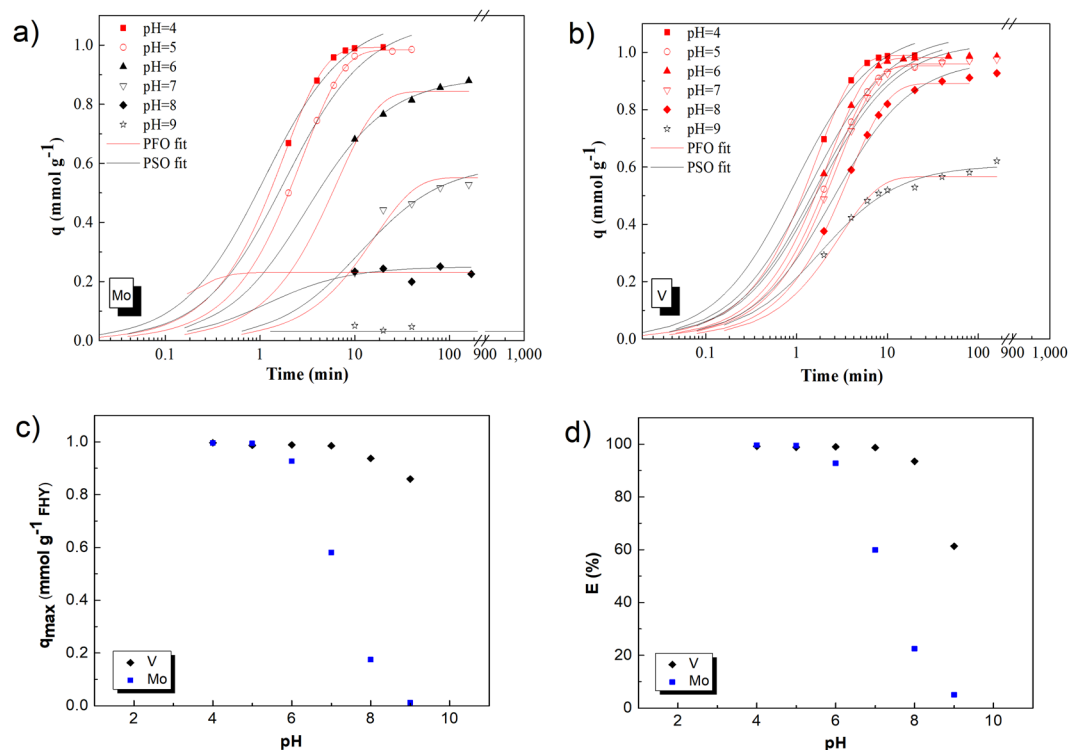
## Results and Discussions

**Ferrihydrite characteristics.** The measured BET surface area of the FHY synthesized in this study was  $200 \pm 16 \text{ m}^2 \text{ g}^{-1}$ . This value falls within the wide range of SA reported for FHY (between 120 and  $840 \text{ m}^2 \text{ g}^{-1}$ ). This low value will likely lead to differences in experimental data vs. simulations (where  $600 \text{ m}^2 \text{ g}^{-1}$  is the default<sup>33</sup>). Our potentiometric titrations (Table S1; Supplementary Information, SI) revealed a FHY point of zero charge (PZC) of 7.96, a result in agreement with previous literature findings<sup>24,25</sup> which indicates that below this pH the FHY surface is positively charged whereas above this pH the surface is negatively charged. Particle/aggregate size measurements by dynamic light scattering (DLS) showed that FHY was present as large aggregates in solution with aggregate sizes ranging between 3 and  $150 \mu\text{m}$ . The average was  $75 \mu\text{m}$  and this size and a single 2-line FHY particle size previously determined by TEM of  $4 \text{ nm}$ <sup>53</sup> will be used in the simulations. Full details of all FHY characterizations are presented in the SI.

**Mo and V adsorption: pH effects and kinetics.** Mo and V loadings on FHY, expressed as uptake capacities (q) and removal efficiencies (E, kinetics discussed in the SI, Fig. S2) are plotted in Fig. 1. The results reveal that for both metals the uptake capacities and removal efficiencies follow similar trends, reaching equilibrium values after ~20 minutes and decreasing in both cases with increasing pH.

For both Mo and V, the derived kinetic parameters are strongly dependent on pH and a faster and greater uptake occurred at lower pH, while a slower and lower sorption occurred at a pH near and above the PZC. These trends matched the uptake-pH profiles (Fig. 1c and d). The experimental data showed that sorption occurred after a short induction time (10–20 min). The data were fitted with pseudo-first (PFO) and pseudo-second (PSO) order kinetic models (Fig. 1)<sup>54–56</sup> and in Table 1 we summarized the kinetic parameters obtained from the fitting. For the Mo system, the experimental data at pH 4 and 5 were fitted very well by the PFO kinetic model, while the data at pH 6 and 7 were better described by the PSO kinetic model. The R-squared for fitting data at pH above 8 was low, suggesting that the employed models are unsuitable. For the V system, the PFO kinetic model fitted very well the data over the pH interval between 4 and 8, whereas the PSO kinetic model better described the adsorption at pH 9 ( $R^2 = 0.990$  for PSO as opposed to  $R^2 = 0.977$  for PFO, Table 1). Similar outputs were obtained, when all experimental data were fitted (see Table S2, for comparison).

For the two systems, two main components are considered as: Mo/V ions in solution and functional groups at the FHY surface. Whereas the first component is set as a constant (matching geochemical modeling), the second component changes with/if there is a change in pH (as seen in our potentiometric titration results, Table S1). At low pH, the protonated sites on the FHY surface are in excess, allowing the anions to bind quickly, thus following a PFO kinetic path via chemisorption. As pH increases towards the PZC, the number of positive charged reactive sites decreased, thus adsorption efficiency also decreases and a PSO kinetic path prevails, which implies physisorption. The results also reveal that V adsorbed onto the FHY surface over a larger range in pH compared to Mo, an observation that can be explained by the difference in the anions' valence and deprotonation stages. Vanadium, with three deprotonation stages, could have more available vanadate species to bind onto the FHY



**Figure 1.** The kinetics of molybdenum (a) and vanadium (b) adsorption onto ferrihydrite at different pH values in the mono-sorbate systems. Symbols represent experimental data, and lines show the fits to a pseudo-first (PFO) and - second (PSO) order kinetic model. The influence of pH on molybdenum and vanadium adsorption onto ferrihydrite is also shown: the experimental results are expressed as uptake capacity (c) and removal efficiency (d). Experimental conditions:  $C_{i,Mo/V} = 100 \mu\text{M}$  metal and  $C_{FHY} = 0.1 \text{ g L}^{-1}$ . Errors in metal concentrations were smaller than the size of the symbols.

surface over the tested pH range. However, as we show later, such a stoichiometric mass balance based argument is not supported by the geochemical modelling results.

In terms of Mo and V removal (Fig. 1d) the data reveal that at pH below 7, V was almost fully removed from solution, yet this efficiency decreased at pH 9 (down to 60%). Mo was almost fully removed from solution at a pH below 6 and its removal efficiency decreased to 60% at pH 7, 22% at pH 8, and 5% at pH 9. For V, at a pH above 7 the removal efficiency profile has a sharper decrease compared to its uptake capacity profile (Fig. 1c) a difference likely a consequence of the fact that the uptake capacity takes into account the adsorbent characteristics, whereas the removal efficiency is a pure expression of metal removal calculated from metal concentration in the supernatant.

Comparing our data to previous studies on Mo<sup>33</sup> and V<sup>46</sup> sorption revealed similar trends. For example, for V, our data matches well with the data in Naeem *et al.*<sup>57</sup>, especially as the properties of the FHY they used were similar to ours ( $SA = 231 \text{ m}^2 \text{ g}^{-1}$ ,  $PZC = 8$ ), and the experiments were conducted under similar experimental conditions (i.e., IS 0.01; ca. 1 mM V and  $1.4 \text{ g L}^{-1}$  dry mass)<sup>57</sup>. Another V adsorption study carried out by Trefry and Metz<sup>6</sup> showed that 80% of the V was removed by  $2 \text{ g L}^{-1}$  FHY within two minutes from synthetic seawater (pH 8 and IS 0.7) that was spiked with  $200 \mu\text{M}$  V. Our experimental data, obtained at much lower IS (averaging 0.001), represent important additions that combined with the other new data will be used in the optimisation of sorption models.

When the adsorption behaviour was tested at constant pH (pH 4, 5 and 8; Fig. 2) the data revealed that at low pH, in both systems, slightly more acid was needed as the anions were adsorbed onto the protonated FHY surfaces (Fig. 2a and c). In contrary at high pH more base (1.7 mL for Mo and 3.2 mL for V, at pH 8) than acid was required for the system to maintain the constant pH during the adsorption (Fig. 2b and d). The acid and base addition led to a final IS, averaging a value of 0.0012 for V and 0.0005 for Mo systems.

The difference in acid and base volumes added during the adsorption of the two anions are likely related to anion size and valence, which control the adsorption bonding environment and support the potentiometric titration and pH dependent adsorption behaviour for Mo and V (Fig. 1).

Qualitatively, this indirect approach of evaluating sorption mechanisms confirms that at a pH below the PZC, anion adsorption onto the protonated FHY surface occurred with hydroxyl release, whereas, at high pH lower adsorption of bi (for Mo) and tri (for V) valent anions onto the negatively charged FHY surface was associated with release of protons.

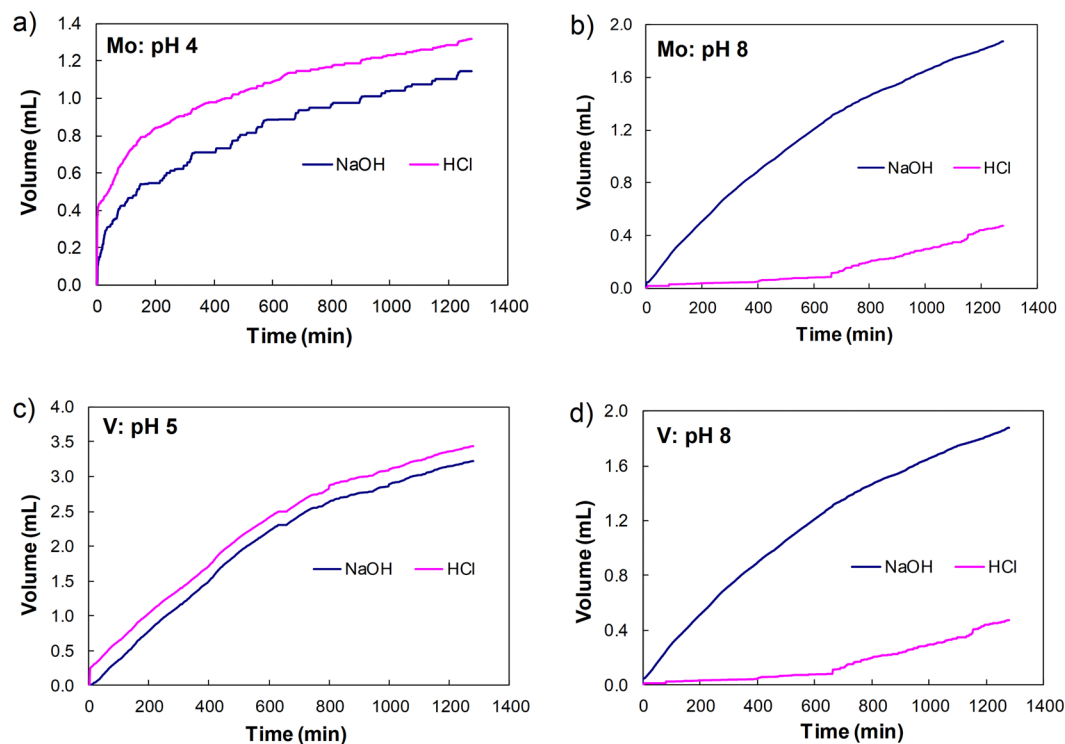
PFO						PSO					N
Mo/pH	q (mmol g <sup>-1</sup> )	k1 (min <sup>-1</sup> )	R <sup>2</sup>	Adj. R <sup>2</sup>	AAD	q (mmol g <sup>-1</sup> )	k2 (g mmol <sup>-1</sup> min <sup>-1</sup> )	R <sup>2</sup>	Adj. R <sup>2</sup>	AAD	
4	0.992 ± 0.001	0.553 ± 0.004	<b>0.9999</b>	<b>0.9999</b>	0.123	1.095 ± 0.003	0.824 ± 0.160	0.993	0.991	0.118	7
5	0.983 ± 0.002	0.354 ± 0.003	<b>0.9998</b>	<b>0.9998</b>	0.103	1.080 ± 0.037	0.507 ± 0.102	0.984	0.981	0.107	8
6	0.843 ± 0.017	0.154 ± 0.019	0.9927	0.9908	0.057	0.889 ± 0.005	0.358 ± 0.021	<b>0.999</b>	<b>0.9995</b>	0.011	6
7	0.551 ± 0.019	0.061 ± 0.009	0.968	0.9628	0.025	0.594 ± 0.022	0.148 ± 0.033	<b>0.974</b>	<b>0.9705</b>	0.036	8
8	0.214 ± 0.011	48.440	0.867	0.848	0.0004	0.214 ± 0.013	1.3*10 <sup>-28</sup>	0.867	0.848	0.0004	9*
9	0.031 ± 0.006	53.0370	0.376	0.251	0.001	0.031 ± 0.007	1.9*10 <sup>-46</sup>	0.376	0.251	0.001	7*
V/pH	q (mmol g <sup>-1</sup> )	k1(min <sup>-1</sup> )	R <sup>2</sup>	Adj. R <sup>2</sup>	AAD	q (mmol g <sup>-1</sup> )	k2(g mmol <sup>-1</sup> min <sup>-1</sup> )	R <sup>2</sup>	Adj. R <sup>2</sup>	AAD	
4	0.989 ± 0.0000002	0.601 ± 0.000009	<b>1</b>	<b>1</b>	0.116	1.07 ± 0.029	0.978 ± 0.197	0.993	0.992	0.109	7
5	0.953 ± 0.003	0.394 ± 0.005	<b>0.9997</b>	<b>0.9996</b>	0.092	1.048 ± 0.031	0.588 ± 0.108	0.988	0.986	0.099	8
6	0.981 ± 0.001	0.442 ± 0.0029	<b>0.9999</b>	<b>0.9908</b>	0.076	1.062 ± 0.027	0.672 ± 0.12	0.989	0.987	0.086	8
7	0.959 ± 0.003	0.351 ± 0.004	<b>0.9996</b>	<b>0.9996</b>	0.058	1.034 ± 0.028	0.563 ± 0.098	0.984	0.982	0.070	9
8	0.891 ± 0.006	0.267 ± 0.007	<b>0.9986</b>	<b>0.9984</b>	0.068	0.973 ± 0.025	0.411 ± 0.057	0.988	0.986	0.081	9
9	0.566 ± 0.012	0.332 ± 0.033	0.980	0.977	0.019	0.606 ± 0.010	0.898 ± 0.101	<b>0.991</b>	<b>0.990</b>	0.028	10

**Table 1.** Summary of the pseudo-first order (PFO) and pseudo-second order (PSO) kinetic model parameters of Mo and V adsorption onto FHY; best fits highlighted by statistical parameters\* (here R<sup>2</sup> and Adj R<sup>2</sup> values) marked in bold. \*R<sup>2</sup>, Adj. R<sup>2</sup>, average absolute deviation (AAD) and the residuals of the fit are statistic parameters based on which the choice of which model better fits the experimental data was done. R<sup>2</sup> and Adj. R<sup>2</sup> parameters were needed to differentiate between the best fits of scenarios in which different and all numbers of data points were fitted, respectively. R<sup>2</sup> allows comparison between PFO and PSO kinetic models with different numbers of data points – i.e., time when equilibrium was reached but not including the equilibrium platter (varied function of pH). Adj.R<sup>2</sup> allows comparison between the models when the same number of data points were considered – i.e., data including equilibrium (see also Table S2 in SI). Where the R<sup>2</sup> and the Adj. R<sup>2</sup> parameters were very similar, then the minimal value of AAD and the uniformity of residual profile were used to decide the best fit of the model. Plots of the data fitted up to equilibrium and the obtained associated parameters are presented above, whereas the results from fitting all the data points at equilibrium are displayed for comparison in the SI.

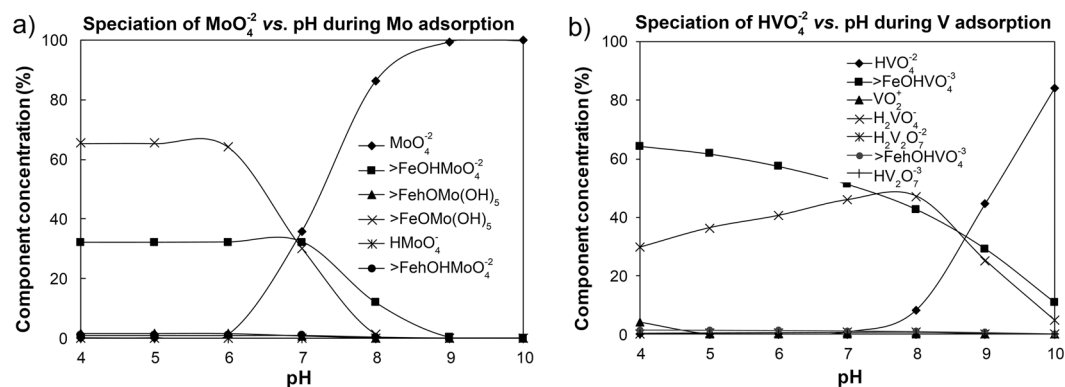
**Geochemical modelling of Mo and V speciation in solution and their adsorption simulation onto ferrihydrite.** Geochemical modelling helped determine speciation of Mo and V in solution that can interact with the FHY surface. Full details about the used codes and databases and assumptions are detailed in the methods and the SI. The results reveal clear differences between the Mo and V speciation modelling outputs from the GW code<sup>58</sup> (Fig. S1a,c and b,d) and VM<sup>44,50</sup> codes (Fig. S4e,f). These discrepancies may be due to differences in codes database inputs (e.g., intrinsic constants, species type). We suggest that databases should be checked, compiled and universally formatted so that they can be read and used by all geochemical modelling codes.

The use of VM code to simulate adsorption as opposed to GW, was done because it contains dedicated models for sorption processes. When the experimental data were compared with the sorption simulation using the VM code<sup>44,50</sup> (Fig. 3), the data showed that free molybdate in solution dominated at a pH above 6, increasing rapidly (to 100%) at pH > 9. At pH < 6, Mo was associated with the FHY surface as FeOMo(OH)<sub>5</sub> (65%) and FeOHMoO<sub>4</sub><sup>-2</sup> (33%) species. The proportions of these complexes decrease with increasing pH, and at pH 7 there were equimolar concentrations of all species. At high pH, free molybdate (MoO<sub>4</sub><sup>-2</sup>) remained dissolved and not adsorbed. This trend explains the decrease in Mo removal efficiency (to 60%) with increasing pH obtained experimentally (Fig. 1d). Interesting however is the fact that the surface associated Mo species (Table S3) differed markedly between the various databases tested and the molybdate dissociation stoichiometries were also inconsistent among the studied databases.

For the V system (Fig. 3b), the modelling revealed that the percentage of vanadate (HVO<sub>4</sub><sup>-2</sup>) in solution was low at pH < 8 (<8%) but increased to 45% and 85% at pH 9 and 10, respectively. Thus below pH 8 most of the V in the system is adsorbed onto FHY, supporting the experimental results (see Fig. 1c and d). At pH 4, ~64% of the V species were adsorbed onto FHY as FeOHVO<sub>4</sub><sup>-3</sup>, whereas 30% was present as the monovalent free vanadate (H<sub>2</sub>VO<sub>4</sub><sup>-</sup>) species. The importance of the V surface complex, FeOHVO<sub>4</sub><sup>-3</sup>, decreased with increasing pH, while monovalent vanadate reached a maximum of 50% at pH 8, followed by a sharp decrease at high pH. Thus, at pH 8 only 40% of the total FeOHVO<sub>4</sub><sup>-3</sup> species can explain the adsorbed V, while the remaining non-sorbed species are made up of 10% divalent vanadate (HVO<sub>4</sub><sup>-2</sup>) and 50% monovalent vanadate anion (H<sub>2</sub>VO<sub>4</sub><sup>-</sup>) (Fig. 3b). These modelling results match well our experimental trends (Fig. 1), yet, quantitatively, the simulation results explain only ~40–50% of experimental data. To explore the causes of this difference we investigated variation in species in the available databases. We tested: (i) values of intrinsic and dissociation constants; (ii) their origin (i.e., reference); (iii) whether the experimental conditions at which the constants were obtained from were similar to the ones in this study, and (iv) what the variations in species parameters are in each database. It became clear that for example the Feo\_dlm.mdb database (used in previous version of the VM code) contains additional V surface associated species besides “=FehOHVO<sub>4</sub><sup>3-2</sup>”. These are “=FehH<sub>2</sub>VO<sub>4</sub>”; “=FehHVO<sub>4</sub>”; “=FehVO<sub>4</sub><sup>2-2</sup>”, which correspond to the expected protonation/deprotonation stoichiometry of the reaction in solution and on surfaces.



**Figure 2.** The profiles of hydrochloric acid (0.1 N) (pink line) and sodium hydroxide (0.1 N) (blue line) added to the molybdenum (a and b) and vanadium (c and d) absorption systems during their adsorption onto ferrihydrite at low pH (4 for molybdenum, (a) and 5 for vanadium, (c) and high pH (8 for both anions, (b) and d)).

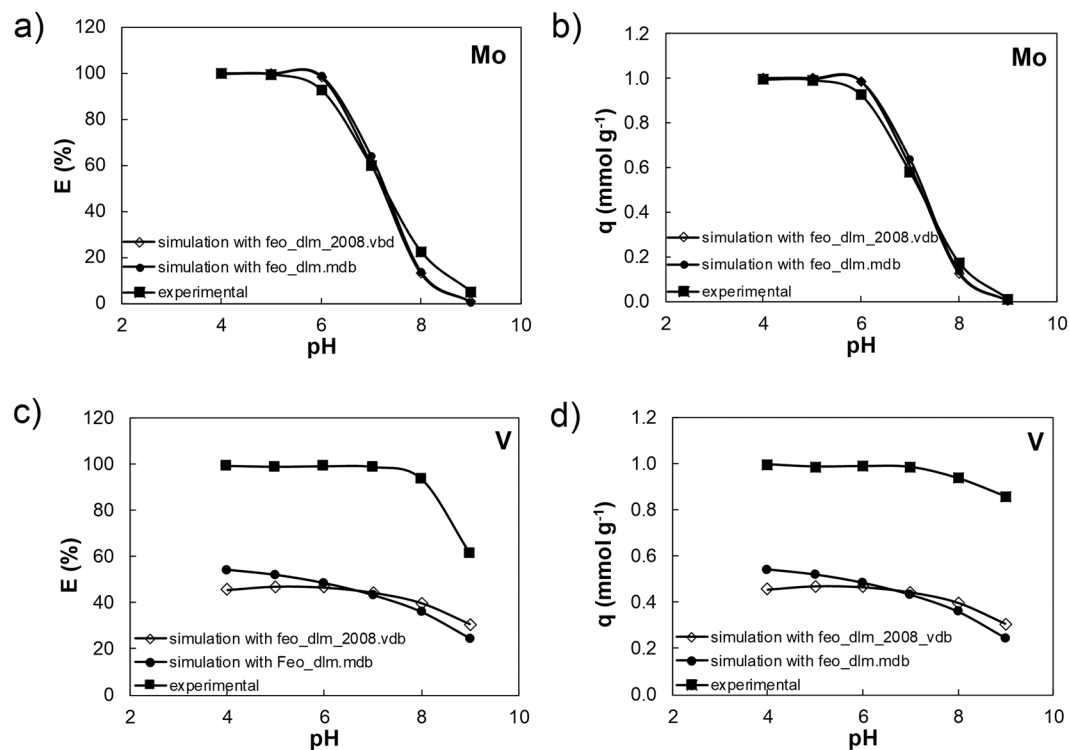


**Figure 3.** Molybdenum and vanadium surface sites distribution among the dissolved and adsorbed species as a function of pH.

However, these species were excluded in the latest database. Furthermore, different values for the sole surface associated species, “=FehOHVO<sub>4</sub><sup>3-</sup>”, were found in various databases (i.e., -0.73 in the current database, 16.63 in M4\_feo\_dlm.vdb database, 13.57 in Dzombak and Morel<sup>30</sup>). Finally, looking for the references cited as the source of these constants (i.e., Cruy 2000 and CruyDrag2002) did reveal that these entries must be incomplete/erroneous as no data or equivalent references could be found.

Combining the species distribution derived from the geochemical modelling and adsorption simulation, with the experimental potentiometric titration results, lead us to conclude that adsorption proceeded as follows: below the PZC of FYH (<8) multi protonated anions bind to the positively charged FHY surfaces likely via inner sphere complexes, while at pH values above the PZC the anions only adsorb weakly, probably via outer sphere complexes.

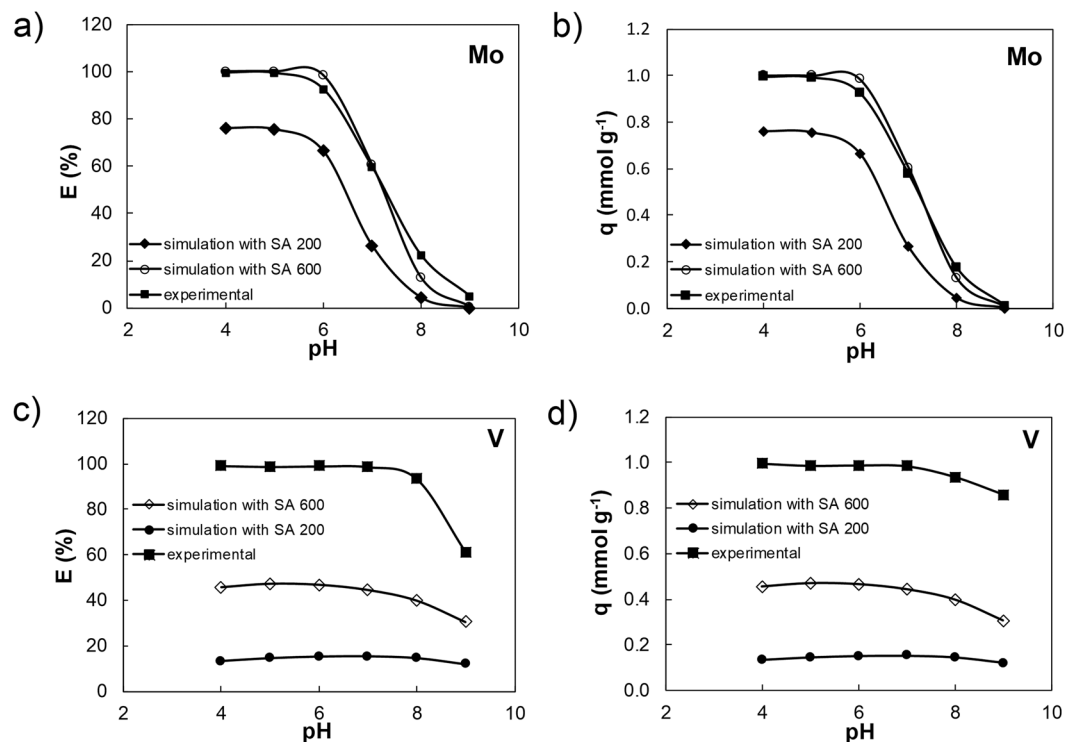
**Effect of code version and database.** For Mo, the simulation results from the two Visual Minteq versions and their associated databases are similar and consistent with the experimental data. However, it has to be noted that this agreement, in E (Fig. 4a) as well as q (Fig. 4b) is only valid when the code default value for the FHY surface area of 600 m<sup>2</sup> g<sup>-1</sup> was used.



**Figure 4.** Comparison between the Mo (a and b) and V (c and d) experimental data and simulation results (using a surface area  $600 \text{ m}^2 \text{ g}^{-1}$ ) expressed as E (%) (a and c) and  $q$  ( $\text{mmol g}^{-1}$ ) (b and d) using Visual Minteq. 2.32 code<sup>44</sup> with databases feo\_dlm.mdb vs. Visual Minteq3 code<sup>50</sup> with databases feo\_dlm\_2008.vdb.

Comparing the entries in the databases for Mo surface species (Table S3), shows that the  $=\text{FeOHMoO}_4^{2-}$  species is present in both databases (feo\_dlm.mdb and feo\_dlm\_2008.vdb) and that the  $\text{FeOMo}(\text{OH})_5$  species ( $\log K = 17.96$ ) from the “feo\_dlm.mdb” database (used for Visual Minteq code) was replaced by the  $=\text{FeMoO}_4^-$  species ( $\log K = 9.5$ ) in the “M4\_feo\_dlm.vdb” database (used for MINTEQA2 code). This replacement was done based on computational optimization but it does not seem to follow stoichiometry in terms of protonation/deprotonation (i.e.,  $\text{H}_2\text{MoO}_4 \rightleftharpoons \text{H}^+ + \text{HMoO}_4^-$ ,  $pK_{a1}$  and  $\text{HMoO}_4^- \rightleftharpoons \text{H}^+ + \text{MoO}_4^{2-}$ ,  $pK_{a2}$ ). In a previous study, Gustafsson<sup>33</sup> simulated Mo adsorption onto FHY using the DLM and CD-MUSIC models using the DLM code parameters from Dzombak and Morel<sup>30</sup>: a specific SA of  $600 \text{ m}^2 \text{ g}^{-1}$ , a fixed site density of  $0.205 \text{ mol sites mol}^{-1}$  Fe and the  $\log K$  of the surface complexation reactions defining the formation of the protonated  $\text{FeOH}_2^+$  species and the deprotonated  $\text{FeO}^-$  species were set at 7.29 and  $-8.93$ , respectively. Gustafsson<sup>33</sup> concluded that in order to better describe the experimental results, beside replacing the  $\text{FeOMoO}_4^-$  ( $\log K = 9.5$ ) with the  $\text{FeOHMoO}_4^{2-}$  ( $\log K = 3.14$ ) species in the databases, a new species, defined as  $\text{FeOMo}(\text{OH})_5$  ( $\log K = 17.96$ ) was necessary to improve the fits. The initial  $\log K$  of  $\text{FeOHMoO}_4^{2-}$  of 2.4, estimated from linear free-energy relationships, was recalculated in FITEQL resulting in a new value of 3.14. In addition, Gustafsson<sup>33</sup> suggested that besides the two existing monodentate surface complexes in the DLM model, another surface complex, i.e., a bidentate complex  $\text{Fe}_2\text{O}_2\text{XO}_2$ , could be important. Gustafsson and Tiberg<sup>15</sup> also modelled Mo adsorption using the triple plane CD-MUSIC model but using different parameters for FHY (i.e., SA =  $650 \text{ m}^2 \text{ g}^{-1}$ , PZC = 8.1, site densities of  $6.25 \text{ sites/nm}^2$  and  $1.55 \text{ sites/nm}^2$ , inner and outer Stern layer capacities of  $1.15 \text{ Fm}^{-2}$  and  $0.9 \text{ Fm}^{-2}$ )<sup>15</sup>. They found that it was necessary to include an additional outer sphere complex (i.e.,  $\text{FeOH}_2^{1/2+} \cdots \text{MoO}_4^{2-}$  with a  $\log K = 11.06$ , calculated using PEST<sup>59</sup>, to complement the existing ( $\text{Fe}_2\text{O}_2\text{MoO}_2^-$  with a  $\log K = 18.71$ ). Only this way could they fit well the experimental results.

In contrary, when we modelled V adsorption with VM 2.32<sup>44</sup> using the feo\_dlm.mdb database (Fig. 4c and d), the predicted removal efficiency and uptake capacity were  $\sim 50\%$  lower than what our experimental results. A similar trend was observed from the simulation with the updated version (VM 3), using the feo\_dlm\_2008.vdb database<sup>50</sup> (Fig. 4c and d), clearly showing that the used databases lack crucial solution and surface V species. If standard vanadate deprotonation pathways are considered ( $\text{H}_3\text{VO}_4 \rightleftharpoons \text{H}^+ + \text{H}_2\text{VO}_4^-$ ,  $pK_{a1}$ ;  $\text{H}_2\text{VO}_4^- \rightleftharpoons \text{H}^+ + \text{HVO}_4^{2-}$ ,  $pK_{a2}$ ;  $\text{HVO}_4^{2-} \rightleftharpoons \text{H}^+ + \text{VO}_4^{3-}$ ,  $pK_{a3}$ ) dissociation constants for these three species should be present but: (i) the database comp\_2008.vdb contains only mono-protonate vanadate species,  $\text{HVO}_4^{2-}$ ; (ii) the database, thermo.vdb, only vanadate  $\text{VO}_4^{3-}$  species (with  $\log K = -13.49$ ) and; (iii) the feo\_dlm.mdb database (used with the VM 2.32 code<sup>44</sup>) contains four vanadate surface associated species, with the corresponding  $\log K$ s, but only three of these follow the stoichiometric vanadate dissociation stages (Table S4). In contrast, the database linked to the newer version of the VM software (VM 3) contains only one V species,  $\text{FehOHVO}_4^{3-}$  with a  $\log K$  of  $-0.73$  (Table S4), and values for the V species  $\text{FehOHVO}_4^{3-}$ : vary between  $-0.73$  and  $-16.63$  in the different databases. This comparison reveals that modelling of Mo and V sorption onto FHY is



**Figure 5.** Comparison of the Mo (a and b) and V (c and d) experimental and simulation adsorption results (using Visual Minteq3 code<sup>50</sup> with feo\_dlm\_2008.vdb database). Data are expressed as E (%) (a and c) and  $q$  (mmol g<sup>-1</sup>) (b and d), using an experimentally determined surface area of 200 m<sup>2</sup> g<sup>-1</sup>, compared to the code's default value of 600 m<sup>2</sup> g<sup>-1</sup>.

currently still difficult because the appropriate species and their dissociation constants need to be first experimentally determined. Furthermore, caution and cross-checking all existing constants prior to performing simulations has always to be done because as we show the results can differ substantially.

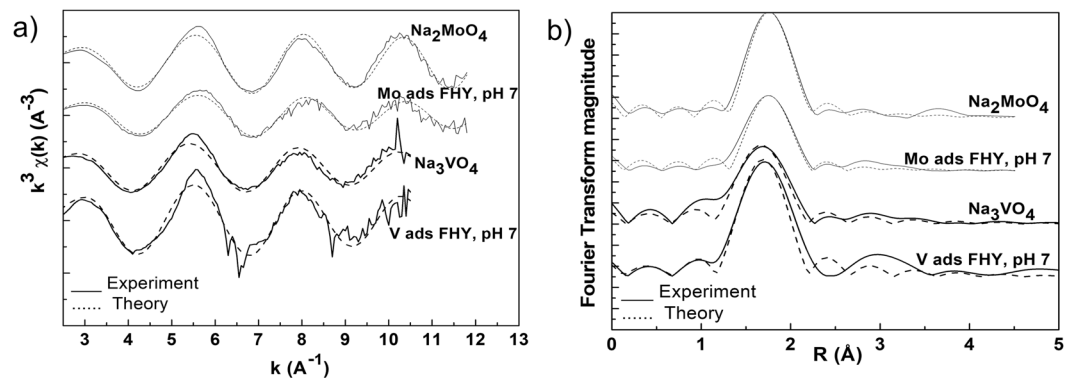
**Effect of surface area and particle size.** As mentioned above surface area for FHY can vary dramatically (between 120 and 840 m<sup>2</sup> g<sup>-1</sup>). We tested how using our measured SA (i.e., 200 m<sup>2</sup> g<sup>-1</sup>) changes the adsorption outputs compared to the default value of 600 m<sup>2</sup> g<sup>-1</sup>. Although our SA value was a third of the default SA, a good match for the Mo between the two SA values was achieved, both in terms of E (%) and  $q$  (mmol g<sup>-1</sup>), yet they were both ~1/3 higher than the experimental results (Fig. 5a and b).

For V, our measured lower SA model path plotted ~1/3 lower than the default high SA path, yet both did not fit the experimental values (Fig. 5c and d). This discrepancy could also likely be due to the SA measuring protocol, which includes a freeze-drying pre-treatment of the slurry. The existing SA measurement protocol has used dry solid as opposed to hydrated slurry that is dispersed in solution during the sorption. Thus, it is better to develop new high-resolution techniques that have capability to measure SA in solution.

In addition, the removal efficiency (E, %) trend at pH above 7, decreased smoothly in the simulations, yet sharply in the experimental results. This discrepancy is likely a consequence of the lack of V species within databases at pH > 7–8.

Finally, we tested the effect of particle size variations that we measured by DLS and TEM (see methods and SI for further information) on the adsorption capacity. Using values that varied between individual particles of 4 nm in diameter and all the way to aggregate sizes of 75 μm (Fig. S5) revealed no change in adsorption profiles, indicating that apparently particle sizes does not seem to have an effect (which is theoretically invalid) or that the model calculations are not sensitive enough for variations in particle size.

**Experimental and modelling cross-correlations from EXAFS measurements.** We confirmed these results by high resolution X-ray adsorption spectroscopy (XAS), which gave us a direct measure of Mo and V bonding onto FHY surface at pH 7. Our XAS measurements (Fig. 6a) revealed matching amplitudes, shapes and positions to the used molybdate and vanadate standards in the Mo- and V-  $k^3 \chi(k)$  weighted K edge EXAFS spectra of Mo and V adsorbed onto FHY show. Moreover, the phase corrected Fourier transformed spectra (Fig. 6b) showed four coordinated oxygen atoms at distances of 1.76 Å for Mo and 1.70 Å for V, indicating tetrahedral coordinated molybdate and vanadate species adsorbed onto FHY. An additional peak at a distance around 2.8 Å for V and 3.7 Å for Mo, could suggest a scattering signal from potential neighbouring iron surface sites. Fitting a second shell was constrained by the quality of the collected data (i.e., the  $k$  space range, especially for V; 3–10 Å<sup>-1</sup>). In addition, it proved difficult to find Mo/V/Fe containing minerals/compounds with similar



Sample	Path	Path Degeneracy	Bond distance $R_s$ , Å	$\sigma^2$ <sup>#</sup>	R-factor <sup>§</sup>
Na <sub>2</sub> MoO <sub>4</sub>	Mo-O	4	1.76±0.01	0.001±0.001	0.007
Na <sub>2</sub> MoO <sub>4</sub> *	Mo-O	4	1.76		
Mo ads FHY, pH7	Mo-O	4	1.76±0.01	0.03±0.001	0.008
Na <sub>3</sub> VO <sub>4</sub>	V-O	4	1.70±0.02	0.003±0.004	0.01
Na <sub>3</sub> VO <sub>4</sub> ·3H <sub>2</sub> O**	V-O	3	1.72		
	V-O	1	1.70		
V ads FHY, pH7	V-O	4	1.70±0.02	0.002±0.004	0.02

**Figure 6.** Molybdenum and Vanadium  $k^3 \chi(k)$  weighted K edge EXAFS spectra (a) and phase-corrected Fourier-transform (b) of EXAFS spectra for the experimental samples together with the Na<sub>2</sub>MoO<sub>4</sub> and Na<sub>3</sub>VO<sub>4</sub> standards (\*Na<sub>2</sub>MoO<sub>4</sub> structure (ICSD 4156) after Matsumoto *et al.*<sup>64</sup>; \*\*Na<sub>3</sub>VO<sub>4</sub>·3H<sub>2</sub>O structure (ICSD 62533) after Kato and Takayama-Muromachi<sup>65</sup>). Below is a table with derived data with  $\sigma^2$ <sup>#</sup> representing the mean-square disorder in the distribution of interatomic distances<sup>62</sup> and R-factor<sup>§</sup> the sum of the residual<sup>62</sup>.

structures (e.g., corner or edge sharing of Mo/V tetrahedra bonded to Fe octahedra), needed to generate appropriate paths. Unfortunately, the previous studies also lack this piece of information. However, we tested various possibilities and these are explained in more detail in the SI.

A comparison with literature data proved difficult because only few XAS studies on Mo adsorption onto FHY at similar conditions exist. Most available data are from experiments at higher IS and at different Mo and FHY concentrations<sup>5,13,15,33</sup>. For example, at an IS of 0.01 and a pH of 7.3, Gustafsson and Tiberg<sup>15</sup> showed that Mo forms an edge sharing bidentate complex<sup>15</sup>, which was similar to the findings of Kasiwabara *et al.*<sup>5,13</sup> at pH 6 and 8 and IS of 0.01<sup>5,13</sup>.

For V adsorbed onto FHY at IS of 0.01 and pH 3.3, 3.6, 6.5 and 9.3, EXAFS spectra from Larsson *et al.*<sup>46</sup> revealed that vanadate was bound primarily as an edge sharing bidentate complex with V-Fe distances around 2.8 Å<sup>46</sup>. For goethite, Peacock and Sherman (year 2004)<sup>45</sup>, showed that V adsorbs at pH 3 to 9 and high IS (0.1) as a bidentate corner sharing inner sphere complex with a possible contribution from a VO<sub>2</sub>(O, OH)<sub>2</sub> edge sharing complex at pH 8.3.

Knowing that a decrease of IS leads to an increase of Stern layer thickness at sorbent surfaces<sup>32</sup>, explains the slight differences in Mo and V adsorbed surface species. At the lower IS and neutral pH represented by our data, the fingerprint interpretation of the Mo and V signals for further shells may empirically suggest contributions from tetrahedral molybdate and vanadate species forming corner and edge sharing outer sphere complexes. However, this possibility has to be confirmed by further analyses over a larger k-space interval.

## Summary

We showed that combining experimentally derived FHY characteristics for surface area (~200 m<sup>2</sup> g<sup>-1</sup>), surface charge (PZC 7.89), particle/aggregate size (4 nm to 75 μm) with quantitative and pH dependent adsorption data resulted in V having a higher affinity for FHY surface sites compared to Mo, a difference easily explained by the V and Mo anion sizes and valences. In addition, the sorption experiments revealed a change in the sorption mechanism as a function of the pH and anion valence. The comparison with the modelling outputs using the GW<sup>58</sup> and VM<sup>50</sup> codes showed a reasonable agreement for Mo, but quantitative differences for V. Furthermore, the comparison between the adsorption simulation outputs and the experimental results revealed that: varying SA, using different geochemical codes and different databases, lead to rather large differences in outputs:

- qualitatively, the important Mo and V- FHY surface species were FeOMo(OH)<sub>5</sub> and FeOHMoO<sub>4</sub><sup>-2</sup> for Mo and FeOHVO<sub>4</sub><sup>-3</sup> for V; however, this V species only partially described the experimental results;
- quantitatively, for Mo the simulated pH adsorption edge (and removal efficiency) matched the experimental results only when the code default SA for FHY (600 m<sup>2</sup> g<sup>-1</sup>) was used, for V the simulated pH-adsorption edge was ca. 50% lower than experimental results, over the entire pH range.



These discrepancies are likely a consequence of incomplete databases (i.e., presence or absence of appropriate and inappropriate species with or without accurate logK constants) as well as differences in adsorbent characteristics (i.e., surface area, particle geometry and size, dissociation constants, etc.).

This comparison leads us to suggest that the modelling of experimental data using geochemical speciation modelling and adsorption simulations for Mo and V currently still require more experimental data for the models to match the experimental data. Although our limited EXAFS results (only at pH 7) provides a direct assessment of the Mo and V surface species, what is needed is data over a much wider chemical space in terms of pH and ionic strengths. Combined with a rigorous check of used database entries and a quantitative assessments of possible species involved in the adsorption is needed, in order to choose the correct stoichiometric species, and to identify the sources of intrinsic constants.

Finally, our results showed that improvements in geochemical databases and models are required before more quantitative insight of the geochemical processes occurring in various media and environmental conditions related to Mo and V sorption to FHY can be made.

## Methods

**Ferrihydrite synthesis and characterization.** Two-line ferrihydrite (FHY) was synthesized following the method of Cornell and Schwertmann<sup>22</sup>. All solutions were prepared from analytical grade from Fisher Scientific. Once synthesized, consecutive washing of the ferrihydrite slurry using MilliQ water was done until the total dissolved solid (TDS) (measured with Water PAL Sprinte™ Industries TDS meter) was very low (~10 ppm). The resulting slurry was subsequently stored in a sealed polypropylene bottle at 4 °C and pH 7. In all adsorption experiments (described below) FHY was used as a slurry because drying the FHY would result in changes in its characters such as surface area, particle size and crystallinity. It is, however, noted that the results described in this work were reported as dried weight for FHY. The conversion from wet slurry to dried weight for FHY was done taking into account the density of the slurry which was previously determined by drying sacrificial slurry samples overnight at 40–50 °C.

For phase identification and surface area determinations, FHY was also freeze-dried (EC Modulyo freeze drier at –50 °C and 7 mbar) followed by analyses. Its surface area (SA) was determined by the Brunauer, Emmett and Teller method (BET, Micromeritics Gemini V, He gas, evacuation rate of 100 mmHg min<sup>–1</sup>, 765 mmHg, 5 seconds equilibration time) while for phase identification we used X-Ray Diffraction (XRD, Bruker D8, angle 5–70°, step size 0.01, power 40 kV and 30 mA). The FHY particle size distribution in solution at variable IS (0, 0.01, 0.7 and 1) was measured by dynamic light scattering (DLS, Malvern Mastersizer). In addition, the FHY surface charge properties were measured using potentiometric titrations of freshly synthesized FHY and using a Man-Tech Inc. auto-titration system equipped with an automatic burette (PC-Titrate™) and three ports: a precise glass pH electrode, a high-resolution titrant injector and a thermometer.

Synchrotron-based X-ray absorption spectroscopy (XAS) was used to investigate the valence state and bonding environment (interatomic distances, coordination number, and species of the neighbours of the absorbing atom) of Mo and V associated with FHY after adsorption. XAS measurements were carried out at station 16.5 at the Daresbury Laboratory, (the Synchrotron Radiation Source, SRS)<sup>60</sup> for Mo, and at the I18-Microfocus spectroscopy beamline (the Diamond Light Source, DLS)<sup>61</sup> for V. The I18-Microfocus spectroscopy station set-up was as described in Brinza *et al.*<sup>53</sup>. Slurry samples from the adsorption experiments were examined in fluorescence mode, while standards (Na<sub>2</sub>MoO<sub>4</sub>, K<sub>2</sub>MoO<sub>4</sub> and MoO<sub>3</sub> for Mo and Na<sub>3</sub>VO<sub>4</sub> and V<sub>2</sub>O<sub>5</sub> for V, diluted with boron nitride) were investigated in transmission mode. Na<sub>2</sub>MoO<sub>4</sub> and Na<sub>3</sub>VO<sub>4</sub> were used as guidance to generate modelling (single and multiple scattering) paths for fitting the experimental data in the range of 2–10 for k<sup>3</sup>-weighted EXAFS and 1–3.5 for Fourier Transform (FT). Data normalization and analysis were done using the Athena and Artemis software - both part of the Demeter package<sup>62</sup>. The goodness of EXAFS data fitting is given by R factor, which represents the absolute misfit between the theory and the data<sup>62</sup>.

**Adsorption experiments.** Adsorption studies were carried out in batch mode (in 500 mL beakers) with FHY slurries (equivalent to 0.1 gL<sup>–1</sup>) equilibrated with a 100 μM metal-containing solution (Mo or V) at room temperature (25 °C ± 2) and under continuous stirring (300 rpm). All experiments were conducted under N<sub>2</sub> atmosphere to minimise CO<sub>2</sub> in the system. Slurry aliquots were taken at a specific times (0; 10; 20; 40; 80; 160; 320 and 1280 minutes) to be able to derive and then model the Mo and V adsorption kinetics<sup>54,63</sup>. Solution samples were separated by filtration from the solids using 0.4 μm syringe filter and then analysed using inductively coupled plasma optical emission spectrometry (ICP-OES, Perkin Elmer Optima ICP-OES; detection limit Mo 0.6 μg L<sup>–1</sup> and V 0.9 μg L<sup>–1</sup>). The effect of pH was studied across the pH range between 4 and 9. All adsorption experiments were carried out using a potentiometric titrator (Radiometer 865 from Titra-Lab®), by adding acid (0.1 N HCl) or base (0.1 N NaOH) at a flow rate of max. 1 mL min<sup>–1</sup>. Acid and base volumes added for each experiment at a specific pH were monitored and collected by the TitraMaster 85 (V4.0) software. The experiments were carried out at an ionic strength value of max 0.0012 for V and 0.0005 for Mo systems.

The experimental results of the pH dependent adsorption studies were plotted as *q* against pH and *E* against pH, where *q* is the metal uptake capacity (mmol g<sup>–1</sup>) and *E* is the uptake efficiency in % (the formulas are detailed in the SI).

The adsorption kinetics (expressed as *q* against time (and *E* against time, see SI)) were then modelled using both a pseudo-first order kinetic model (PFO) and pseudo-second order kinetic model (PSO)<sup>54–56</sup> to calculate kinetic rates and weighed uptake capacity values and to derive adsorption mechanisms.

**Geochemical modelling and adsorption simulation.** It is important to note that the term “modelling” was used for the speciation calculation of elements in solution and the term “simulation” was used for the adsorption modelling.

Parameter	Value	Reference
Ionic strength	0.001	This study
Mo(VI) or V(V) concentration	100 $\mu$ M	This study
Ferrihydrite surface area (measured)	200 $\text{m}^2 \text{g}^{-1}$ <sup>#</sup>	This study
Ferrihydrite particles concentration (Cp)	0.1 $\text{g L}^{-1}$ or 0.935 $\text{mM}$ <sup>‡</sup>	This study
Radius of a considered spherical particle	4 nm and 75000 nm*	This study
logK for = FeOMo(OH) <sub>5</sub>	17.96	Feo_dlm_2008
logK for = FehOMo(OH) <sub>5</sub>		
logK for = FeOHMoO <sub>4</sub> <sup>-2</sup>	3.14	Feo_dlm_2008
logK for = FehOHMoO <sub>4</sub> <sup>-2</sup>		
logK for = FeOHVO <sub>4</sub> <sup>-3</sup>	-0.73	Feo_dlm_2008
logK for = FehOHVO <sub>4</sub> <sup>-3</sup>		

**Table 2.** Parameters used in the VM adsorption simulation. <sup>‡</sup>Cp is calculated as 0.935 mM (assuming a ferrihydrite stoichiometry of Fe:H<sub>2</sub>O:H as 1:3:-3, with FHY molecular weight of 106.86  $\text{g mol}^{-1}$ ). <sup>#</sup>Measured surface area (200  $\text{m}^2 \text{g}^{-1}$ ) was also used in the adsorption simulation in order to compare the simulation results with the experimental data. A value of 600  $\text{m}^2 \text{g}^{-1}$  for the surface area is the default for the HFO model. \*Particle shape and size chosen in the simulation: spheres with sizes between 4 nm (measured by TEM<sup>53</sup> and 75000 nm (measured in solution, this study).

*Geochemist's Workbench*® 6.0. The speciation modelling using *Geochemist's Workbench*® 6.0 code<sup>58</sup> aimed to identify the aqueous or solid species present in the adsorption systems as well as the saturation limits for Mo and V compounds. The speciation modelling is also to determine the optimal conditions and the metal speciation as a function of pH in the experimental adsorption studies. Speciation diagrams as a function of pH were calculated using the thermodynamic data “thermo2000.dat” for Mo (VI) and “thermo\_minteq.dat” for V (V) at standard conditions (i.e., T = 25 °C, P = 1.013 bar).

*Visual Minteq* (VM). Adsorption simulations of the experimental adsorption studies were done with the geochemical software *Visual Minteq* (VM) version 2.32<sup>44</sup> and version 3.0<sup>50</sup> using the experimental adsorption conditions (e.g., pH, IS, metal and sorbent concentrations, temperature, pressure, CO<sub>2</sub> free systems, measured and empirically derived SA and particles size (PS) properties, etc.). VM can be used to compute equilibrium among dissolved, adsorbed, solid, and gas phases in a system at specified conditions. It is based on the MINTEQA2 version 4.0 code which was compiled in Visual Basic 6.0 in 2005<sup>44</sup> and updated in 2008 and 2012. The code includes extensive databases such as: thermodynamic database (i.e., thermo.mdb), components database (i.e., comp.mdb), solids database (i.e., type6.mdb), Dissolved Organic Matter (DOM) complex database (gaussian.mdb) and complexation database (feo-dlm.mdb), but also options for surface complexation models (e.g., 2pK<sub>a</sub>-DLM, 2pK<sub>a</sub>-TLM, 2pK<sub>a</sub>-CCM, HFO-DLM and more recently Fh-2site, Fh-3site). Adsorption data were modelled with the Hydrus Ferric Oxide (HFO) model, and a diffuse layer model (DLM) with 2pK. The HFO model contains as default SA of 600  $\text{m}^2 \text{g}^{-1}$  (in the 2.30 version SA is fixed at the default value, whereas the version 3.0 allows changes in SA); two type of sites with densities of 2.25 sites/nm<sup>2</sup> and 0.056 sites/nm<sup>2</sup>; FHY surface sites concentration 0.07496  $\text{mmol L}^{-1}$  and 0.00187  $\text{mmol L}^{-1}$ ; FHY molecular weight 106.86  $\text{g mol}^{-1}$ ; the FHY atoms stoichiometry: of Fe<sup>+3</sup>:H<sub>2</sub>O:H<sup>+</sup> as 1:3:-3\*; with log K's of the surface complexation reactions defining the formation of the protonated FeOH<sub>2</sub><sup>+</sup> and deprotonated FeO<sup>-</sup> species as 7.29 and -8.93, respectively. In addition, it contains optional particle geometry choices from: plane, cylinder and sphere, and adjustable particle sizes. In our model one shape with two sizes was selected (Table 2; additional discussion in SI). Adsorption simulations were done using the following databases: thermo.mdb (thermo.vdb in VM 3.0 version), type6.mdb type6.vdb in VM 3.0 version), comp.mdb (comp\_2008.vdb in VM 3.0 version) and gaussian.mdb (gaussian.vdb in VM 3.0 version) and two complexation databases: feo\_dlm.mdb (feo\_dlm\_2008.vdb in VM 3.0 version) as available with VM codes<sup>44,50</sup>. A third complexation database, M4\_feo\_dlm.vdb, was also discussed in SI.

For the simulated uptake capacities, the amount of Mo and V taken up by FHY was solely quantified from the concentrations of the surface associated species (in mmols), which were summed and normalized to 1 g of FHY. The adsorption simulation outputs using the VM code<sup>44,50</sup> (varying code version with associated databases and FHY parameters SA (and PS, in SI)) were compared with the experimental results and discussed. With this study we aimed only to compare our new experimental data on Mo and V adsorption with existing databases and model outputs and not to change modelling codes or databases.

## References

- Mendel, R. R. Molybdenum: biological activity and metabolism. *Dalton Trans* **7**, 3404–3409 (2005).
- Mendel, R. R. & Schwarz, G. Molybdoenzymes and molybdenum cofactor in plants. *Critical Reviews In Plant Sciences* **18**, 33–69 (1999).
- Burgess, B. K. & Lowe, D. J. Mechanism of Molybdenum Nitrogenase. *Chem Rev* **96**, 2983–3012 (1996).
- Mukherjee, B. *et al.* Vanadium—an element of atypical biological significance. *Toxicology Letters* **150**, 135–143 (2004).
- Kashiwabara, T., Takahashi, Y., Tanimizu, M. & Usui, A. Molecular-scale mechanisms of distribution and isotopic fractionation of molybdenum between seawater and ferromanganese oxides. *Geochimica et Cosmochimica Acta* **75**, 5762–5784, <https://doi.org/10.1016/j.gca.2011.07.022> (2011).

6. Trefry, J. H. & Metz, S. Role of hydrothermal precipitates in the geochemical cycling of vanadium. *Letters to Nature* **432**, 531–534 (1989).
7. Metz, S. & Trefry, J. H. Scavenging of vanadium by Iron Oxides in Hydrothermal Plumes. *Eos* **69**, 148 (1988).
8. Shieh, C.-S. & Duedall, I. W. Role of amorphous ferric oxyhydroxide in removal of anthropogenic vanadium from seawater. *Marine Chemistry* **25**, 121–139 (1988).
9. Siebert, C., Nagler, T. F., Blanckenburg, F. V. & Kramers, J. D. Molybdenum isotope records as a potential new proxy for paleoceanography. *Earth and Planetary Science Letters* **211**, 159–171 (2003).
10. Price, S. W. T. *et al.* Chemical imaging of single catalyst particles with scanning [small mu]-XANES-CT and [small mu]-XRF-CT. *Physical Chemistry Chemical Physics* **17**, 521–529 (2014).
11. Zhao, J. *et al.* Role of molybdenum at the iron oxides surface. *Journal of Catalysis* **148**, 194–197 (1994).
12. Blanchard, P. E. R. *et al.* Investigating the Geochemical Model for Molybdenum Mineralization in the JEB Tailings Management Facility at McClean Lake, Saskatchewan: An X-ray Absorption Spectroscopy Study. *Environmental Science & Technology* **49**, 6504–6509, <https://doi.org/10.1021/acs.est.5b00528> (2015).
13. Kashiwabara, T., Takahashi, Y. & Tanimizu, M. XAFS study on the mechanism of isotopic fractionation of molybdenum during its adsorption on ferromanganese oxides. *Geochemical Journal* **43**, e31–e36 (2009).
14. Essilfie-Dughan, J., Pickering, I. J., Hendry, M. J., George, G. N. & Kotzer, T. Molybdenum speciation in uranium mine tailings using X-ray absorption spectroscopy. *Environ Sci Technol.* **45**, 455–460, doi:410.1021/es102954b Epub102010 Dec 102913 (2011).
15. Gustafsson, J. P. & Tiberg, C. Molybdenum binding to soil constituents in acid soils: An XAS and modelling study. *Chemical Geology* **417**, 279–288, <https://doi.org/10.1016/j.chemgeo.2015.10.016> (2015).
16. Poulton, S. W. & Raiswell, R. The low temperature geochemical cycle of iron: from continental fluxes to marine sediment deposition. *American Journal of Science* **302**, 774–805 (2002).
17. Crawford, R. J., Harding, I. H. & Mainwaring, D. E. The Zeta potential of iron and chromium hydrous oxides during adsorption and coprecipitation of aqueous heavy metals. *Journal of Colloid and interface science* **181**, 561–570 (1996).
18. Cornell, R. M. & Schwertmann, U. *The Iron Oxides: Structure, Properties, Reactions, Occurrences and Uses.* (Wiley-VCH GmbH&KGaA, 2003).
19. Jambor, J. L. & Dutrizac, J. E. Occurrence and constitution of natural and synthetic ferrihydrite, a widespread iron oxyhydroxide. *Chemical Reviews* **98**, 2549–2586 (1998).
20. Trivedi, P. & Lisa, A. Ni and Zn sorption to amorphous versus crystalline iron oxides: Macroscopic studies. *Journal of Colloid and Interface Science* **244**, 221–229 (2001).
21. Turner, D. R. & Hunter, K. A. The biogeochemistry of Iron in Seawater. (eds John Wiley & Sons Ltd: Chichester, United Kingdom. 410, 2002).
22. Cornell, R. M. & Schwertmann, U. *The Oxides in the Laboratory.* (Wiley-VCH, 2000).
23. Dyer, J. A., Trivedi, P., Scrivner, N. C. & Sparks, D. L. Surface complexation modeling of zinc sorption onto ferrihydrite. *Journal of Colloid and Interface Science* **270**, 56–65 (2004).
24. Dyer, J. A., Trivedi, P., Scrivner, N. C. & Sparks, D. L. Lead sorption onto ferrihydrite. 2. Surface complexation modeling. *Environmental Science Technology* **37**, 915–922 (2003).
25. Trivedi, P., Dyer, J. A. & Sparks, D. L. Lead sorption onto ferrihydrite. 1. A macroscopic and spectroscopic assessment. *Environmental Science Technology* **37**, 908–914 (2003).
26. Scheinost, A. S. C., Bend, S., Pandya, K. I. & Sparks, D. L. Kinetic controls on Cu and Pb sorption by ferrihydrite. *Environmental Science and Technology* **35**, 1090–1096 (2001).
27. Spadini, L., Schindler, P. W., Charlet, L., Manceau, A. & Ragnarsdottir, K. V. Hydrous ferric oxide: evaluation of Cd–HFO surface complexation models combining CdK EXAFS data, potentiometric titration results, and surface site structures identified from mineralogical knowledge. *Journal of Colloid and Interface Science* **266**, 1–18 (2003).
28. Waychunas, G. A., Fuller, C. C. & Davis, J. A. Surface complexation and precipitate geometry for aqueous Zn(II) sorption on ferrihydrite I: X-ray absorption extended fine structure spectroscopy analysis. *Geochimica et Cosmochimica Acta* **66**, 1119–1137 (2002).
29. Waychunas, G. A., Fuller, C. C., Rea, B. A. & Davis, J. A. Wide angle X-ray scattering (WAXS) study of “two-line” ferrihydrite structure: Effect of arsenate sorption and counterion variation and comparison with EXAFS results. *Geochimica et Cosmochimica Acta* **60**, 1765–1781 (1996).
30. Hiemstra, T. & Van Riemsdijk, W. H. A surface structural model for ferrihydrite I: Sites related to primary charge, molar mass, and mass density. *Geochimica et Cosmochimica Acta* **73**(15), 4423–4436 (2009).
31. Schwaminger, S. P. *et al.* Formation of iron oxide nanoparticles for the photooxidation of water: Alteration of finite size effects from ferrihydrite to hematite. *Scientific Reports* **7**, 12609, <https://doi.org/10.1038/s41598-017-12791-9> (2017).
32. Dzombak, D. A. & Morel, F. M. M. *Surface Complexation Modeling: Hydrous Ferric Oxide.* (A Wiley Intersciences Publications, 1990).
33. Gustafsson, J. P. Modelling molybdate and tungstate adsorption to ferrihydrite. *Chemical Geology* **200**, 105–115 (2003).
34. Loan, M., Parkinson, G. M. & Richmond, W. R. The effect of zinc sulfide on phase transformations of ferrihydrite. *American Mineralogist* **90**, 258–261 (2005).
35. Sannino, F. *et al.* Sorption of arsenate and dichromate on polymerin, Fe(OH)(x)-polymerin complex and ferrihydrite. *Journal of Hazardous Materials* **166**, 1174–1179, <https://doi.org/10.1016/j.jhazmat.2008.12.015> (2009).
36. Kooner, Z. S. Comparative study of adsorption behavior of copper, lead, and zinc onto goethite in aqueous systems. *Environmental Geology* **21**, 242–250 (1993).
37. Li, F., Koopal, L. & Tan, W. Roles of different types of oxalate surface complexes in dissolution process of ferrihydrite aggregates. *Scientific Reports* **8**, 2060, <https://doi.org/10.1038/s41598-018-20401-5> (2018).
38. Rout, K., Mohapatra, M. & Anand, S. 2-line ferrihydrite: synthesis, characterization and its adsorption behaviour for removal of Pb(II), Cd(II), Cu(II) and Zn(II) from aqueous solutions. *Dalton Transactions* **41**, 3302–3312 (2012).
39. Rojo, I. *et al.* In *3rd Symposium on Nuclear Materials held at the EMRS 2008 Spring Meeting.* 474–478 (Elsevier Science Bv).
40. Song, Y., Swedlund, P. J. & Singhal, N. Copper(II) and Cadmium(II) Sorption onto Ferrihydrite in the Presence of Phthalic Acid: Some Properties of the Ternary Complex. *Environmental Sciences and Technology* **42**, 4008–4013 (2008).
41. Tiberg, C. & Gustafsson, J. P. Phosphate effects on cadmium(II) sorption to ferrihydrite. *Journal of Colloid and Interface Science* **471**, 103–111, <https://doi.org/10.1016/j.jcis.2016.03.016> (2016).
42. Iwai, T. & Hashimoto, Y. Adsorption of tungstate (WO<sub>4</sub>) on birnessite, ferrihydrite, gibbsite, goethite and montmorillonite as affected by pH and competitive phosphate (PO<sub>4</sub>) and molybdate (MoO<sub>4</sub>) oxyanions. *Applied Clay Science* **143**, 372–377, <https://doi.org/10.1016/j.clay.2017.04.009> (2017).
43. Das, S., Essilfie-Dughan, J. & Jim Hendry, M. Sequestration of molybdate during transformation of 2-line ferrihydrite under alkaline conditions. *Applied Geochemistry* **73**, 70–80, <https://doi.org/10.1016/j.apgeochem.2016.08.003> (2016).
44. Visual Minteq. 2.32 v. 2.32. (KTH, Stockholm, Sweden, 2005).
45. Peacock, C. L. & Sherman, D. M. Vanadium(V) adsorption onto goethite (α-FeOOH) at pH 1.5 to 12: a surface complexation model based on ab initio molecular geometries and EXAFS spectroscopy. *Geochimica et Cosmochimica Acta* **68**, 1723–1733, <https://doi.org/10.1016/j.gca.2003.10.018> (2004).

46. Larsson, M. A., Persson, I., Sjöstedt, C. & Gustafsson, J. P. Vanadate complexation to ferrihydrite: X-ray absorption spectroscopy and CD-MUSIC modelling. *Environmental Chemistry* **14**, 141–150 (2017).
47. Goldberg, S., Lesch, S. M. & Suarez, D. L. Predicting molybdenum adsorption by soils using soil chemical parameters in the constant capacitance model. *Soil Science Society American Journal* **66**, 1836–1842 (2002).
48. Gustafsson, J. P., Dassman, E. & Backstrom, M. Towards a consistent geochemical model for prediction of uranium(VI) removal from groundwater by ferrihydrite. *Applied Geochemistry* **24**, 454–462, <https://doi.org/10.1016/j.apgeochem.2008.12.032> (2009).
49. Fariña, A. O., Peacock, C. L., Fiol, S., Antelo, J. & Carvin, B. A universal adsorption behaviour for Cu uptake by iron (hydr)oxide organo-mineral composites. *Chemical Geology* **479**, 22–35, <https://doi.org/10.1016/j.chemgeo.2017.12.022> (2018).
50. Visual Minteq, 3 v. 3 (KTH, Stockholm, Sweden, 2012).
51. González, A. G. et al. Chemical and structural characterization of copper adsorbed on mosses (Bryophyta). *Journal of Hazardous Materials* **308**, 343–354, <https://doi.org/10.1016/j.jhazmat.2016.01.060> (2016).
52. Arai, Y. *X-ray Absorption Spectroscopic Investigation of Molybdenum Multinuclear Sorption Mechanism at the Goethite-Water Interface*. Vol. 44 (2010).
53. Brinza, L., Vu, H. P., Shaw, S., Mosselmans, J. F. W. & Benning, L. G. Effect of Mo and V on the Hydrothermal Crystallization of Hematite from Ferrihydrite: An *in Situ* Energy Dispersive X-ray Diffraction and X-ray Absorption Spectroscopy Study. *Crystal Growth & Design* **15**, 4768–4780, <https://doi.org/10.1021/acs.cgd.5b00173> (2015).
54. Simonin, J.-P. On the comparison of pseudo-first order and pseudo-second order rate laws in the modeling of adsorption kinetics. *Chemical Engineering Journal* **300**, 254–263, <https://doi.org/10.1016/j.cej.2016.04.079> (2016).
55. Ho, Y. S. & McKay, G. A Comparison of Chemisorption Kinetic Models Applied to Pollutant Removal on Various Sorbents. *Process Safety and Environmental Protection* **76**, 332–340, <https://doi.org/10.1205/095758298529696> (1998).
56. Lagergren, S. Zur theorie der sogenannten adsorption gelöster stoffe, *Kungliga Svenska Vetenskapsakademiens. Handlingar* **24**, 1–39 (1886).
57. Naeem, A., Westerhoff, P. & Mustafa, S. Vanadium removal by metal (hydr)oxide adsorbents. *Water Research* **41**, 1596–1602 (2007).
58. The Geochemist's Workbench - A User's Guide to Rxn, Act2, React, and Gtplot v. Release 4.0 (University of Illinois, 2002).
59. PEST — Calibration and Uncertainty Analysis for Complex Environmental Models (Watermark Numerical Computing, Brisbane, Australia, 2015).
60. Bilsborrow, R. et al. A wide-aperture dynamically focusing sagittal monochromator for X-ray spectroscopy and diffraction. *Journal of Synchrotron Radiation* **13**, 54–58 (2006).
61. Mosselmans, F. et al. I18-the microfocus spectroscopy beamline at the Diamond Light Source. *Journal of Synchrotron Radiation*, <https://doi.org/10.1107/s0909049509032282> (2009).
62. Ravel, B. & Newville, M. A. ATHENA, ARTEMIS, HEPHAESTUS: data analysis for X-ray absorption spectroscopy using IFEFFIT. *Journal of Synchrotron Radiation* **12**, 537–541 (2005).
63. Wu, F.-C., Tseng, R.-L., Huang, S.-C. & Juang, R.-S. Characteristics of pseudo-second-order kinetic model for liquid-phase adsorption: A mini-review. *Chemical Engineering Journal* **151**, 1–9, <https://doi.org/10.1016/j.cej.2009.02.024> (2009).
64. Matsumoto, K., Kobayashi, A. & Sasaki, Y. The crystal structure of sodium molybdate dihydrate, Na<sub>2</sub>MoO<sub>4</sub>·2H<sub>2</sub>O. *Bulletin of the Chemical Society Japan* **48**, 1009–1013 (1975).
65. Kato, K. & Takayama, M. E. Die Struktur des Trinatriumvanadatdihydrats. *Acta Crystallographica C* **39**, 1030–1032 (1983).

## Acknowledgements

European Community under the Sixth Framework (FP6), Marie Curie Actions Early-Stage Training (EST) Fellowships: BIOTRACS (Bio-transformation of trace elements in aquatic systems) working on “The interaction of trace metals and iron-based nanoparticles in contrasting marine settings” contract number MEST-CT-2004-514262 is acknowledged for funding. CCLRC, SRS, Daresbury (Grant 47113) and Diamond Light Source (CM-1946-2) are acknowledged for the beam time. The article-processing charge is covered from the Contract no. 34PFE, funded by the Romanian Ministry of Research and Innovation within Program 1 - Development of the national RD system, Subprogram 1.2 - Institutional Performance - RDI excellence funding projects.

## Author Contributions

L.G.B. was awarded the synchrotron beamtime for Mo-XAS at the SRS, UK, while L.B. carried out the V-XAS experiments at the DLS, UK. L.G.B. coordinated and supervised the studies as part of her granted European funding (see above). L.B. and H.P.V. performed the lab based and synchrotron experiments, measurements and data processing. Solution modelling were done by L.B. and H.P.V., while kinetic modelling and adsorption simulation were done by L.B., L.B., H.P.V., M.N. and L.G.B. have been involved in the manuscript writing. L.G.B. and M.N. critically examined the results and improved the clarity of the manuscript.

## Additional Information

**Supplementary information** accompanies this paper at <https://doi.org/10.1038/s41598-018-37875-y>.

**Competing Interests:** The authors declare no competing interests.

**Publisher's note:** Springer Nature remains neutral with regard to jurisdictional claims in published maps and institutional affiliations.



**Open Access** This article is licensed under a Creative Commons Attribution 4.0 International License, which permits use, sharing, adaptation, distribution and reproduction in any medium or format, as long as you give appropriate credit to the original author(s) and the source, provide a link to the Creative Commons license, and indicate if changes were made. The images or other third party material in this article are included in the article's Creative Commons license, unless indicated otherwise in a credit line to the material. If material is not included in the article's Creative Commons license and your intended use is not permitted by statutory regulation or exceeds the permitted use, you will need to obtain permission directly from the copyright holder. To view a copy of this license, visit <http://creativecommons.org/licenses/by/4.0/>.

© The Author(s) 2019