



This is a repository copy of *Mesenchymal stromal cells for acute graft-versus-host disease: response at 1 week predicts probability of survival.*

White Rose Research Online URL for this paper:  
<https://eprints.whiterose.ac.uk/141257/>

Version: Published Version

---

**Article:**

Galleu, A., Milojkovic, D., Deplano, S. et al. (21 more authors) (2019) Mesenchymal stromal cells for acute graft-versus-host disease: response at 1 week predicts probability of survival. *British Journal of Haematology*, 185 (1). pp. 89-92. ISSN 0007-1048

<https://doi.org/10.1111/bjh.15749>

---

**Reuse**

This article is distributed under the terms of the Creative Commons Attribution (CC BY) licence. This licence allows you to distribute, remix, tweak, and build upon the work, even commercially, as long as you credit the authors for the original work. More information and the full terms of the licence here:  
<https://creativecommons.org/licenses/>


**Takedown**

If you consider content in White Rose Research Online to be in breach of UK law, please notify us by emailing [eprints@whiterose.ac.uk](mailto:eprints@whiterose.ac.uk) including the URL of the record and the reason for the withdrawal request.



[eprints@whiterose.ac.uk](mailto:eprints@whiterose.ac.uk)  
<https://eprints.whiterose.ac.uk/>

# Mesenchymal stromal cells for acute graft-versus-host disease: response at 1 week predicts probability of survival

Antonio Galleu,<sup>1,2</sup> Dragana Milojkovic,<sup>3</sup>  
 Simona Deplano,<sup>3</sup> Richard Szydlo,<sup>4</sup>  
 Sandra Loaiza,<sup>3</sup> Robert Wynn,<sup>5</sup>  
 David I. Marks,<sup>6</sup> Deborah Richardson,<sup>7</sup>  
 Kim Orchard,<sup>7</sup> Edward Kanfer,<sup>3</sup>  
 Eleni Tholouli,<sup>5</sup> Muhammad Saif,<sup>5</sup>  
 Ponni Sivaprakasam,<sup>6</sup> Sarah Lawson,<sup>8</sup>  
 Adrian Bloor,<sup>9</sup> Antonio Pagliuca,<sup>10</sup>  
 Victoria Potter,<sup>10</sup> Varun Mehra,<sup>10</sup>   
 John A. Snowden,<sup>11</sup>  Ajay Vora,<sup>12</sup>  
 Bhuvan Kishore,<sup>13</sup> Hannah Hunter,<sup>14</sup>  
 Jane F. Apperley,<sup>3,4</sup> and  
 Francesco Dazzi<sup>1,2,3,4</sup> 

<sup>1</sup>King's College London, <sup>2</sup>King's Health Partners  
 Cancer Research UK Centre, <sup>3</sup>Imperial College  
 Healthcare NHS Trust, <sup>4</sup>Imperial College  
 London, London, <sup>5</sup>Central Manchester University  
 Hospital, Manchester, <sup>6</sup>University Hospitals  
 Bristol, Bristol, <sup>7</sup>University Hospital  
 Southampton, Southampton, <sup>8</sup>Birmingham  
 Women's and Children's Hospitals, Birmingham,  
<sup>9</sup>The Christie NHS Foundation Trust,  
 Manchester, <sup>10</sup>King's College Hospital NHS  
 Trust, London, <sup>11</sup>Sheffield Teaching Hospitals  
 NHS Foundation Trust, <sup>12</sup>Sheffield Children's  
 Hospital, Sheffield, <sup>13</sup>Heart of England, NHS  
 Foundation Trust, Birmingham, and <sup>14</sup>Plymouth  
 Hospitals NHS Trust, Plymouth, UK

Received 3 October 2018; accepted for  
 publication 11 December 2018

Correspondence: Francesco Dazzi, Regenerative  
 Medicine, School of Cancer & Pharmaceutical  
 Sciences, The Rayne Institute, King's College  
 London, 123 Coldharbour Lane, SE5 9NU,  
 London.

E-mail: francesco.dazzi@kcl.ac.uk

J.F.A. and F.D. contributed equally to this  
 study.

## Summary

Mesenchymal stromal cells (MSCs) have been successfully used for the treatment of steroid-resistant graft-versus-host-disease (GvHD). However, the lack of early predictors of clinical responses impacts on the time at which to add further treatment and consequently the design of informative clinical trials. Here, we present the UK experience of one of the largest cohorts of GvHD patients undergoing MSC infusions so far reported. We show that clinical responses assessed as early as 1 week after MSC infusion predict patients' overall survival. In our cohort, cell dose, patients' age and type of organ involvement are crucial factors associated with clinical responses.

**Keywords:** cellular therapies, GvHD, mesenchymal cells, clinical research, stromal cells.

Acute graft-versus-host disease (aGvHD) is a life-threatening complication of allogeneic haematopoietic stem cell transplantation (HSCT) and one of the major factors limiting its success (Ferrara *et al*, 2009). Currently there is no established strategy to treat steroid-resistance in aGvHD patients, which

is associated with a dismal prognosis. Mesenchymal stromal cells (MSCs) are a heterogeneous population of cells with potent immunosuppressive activity (Marigo & Dazzi, 2011). They have been extensively tested as a salvage option to treat steroid-resistant aGvHD patients and convincingly shown to

improve the survival of responding patients (Le Blanc *et al*, 2008; von Dalowski *et al*, 2016). Despite these encouraging results, there is still a pressing need to identify reliable factors that can be used as early predictors of treatment outcome, to identify those patients more likely to respond and the most effective administration regimen. An improved understanding of these issues would significantly optimize MSC treatment and help clinicians to better define the role of MSCs in the armamentarium of GvHD therapy.

In this study, we present the retrospective analysis of a cohort of 60 steroid-resistant aGvHD patients treated with bone marrow-derived MSCs at several Centres in the UK between May 2008 and December 2014. MSCs were manufactured at Imperial College Healthcare NHS Trust and administered for compassionate use [according to Regulation (EC) No 1394/2007]. aGvHD was biopsy proven in 45 patients, whilst in the remaining patients the diagnosis was based on clinical features after excluding alternative causes. Patients were considered to be steroid-refractory when they failed to respond to high-dose methylprednisolone ( $\geq 2$  mg/kg body-weight) after 6 days or if GvHD progressed after 3 days. Detailed demographics of patients are summarized in Table S1. Response to MSC treatment was assessed 1 week after administration. In accordance with previous experiences (Resnick *et al*, 2013; von Dalowski *et al*, 2016), responses were defined as complete (CR) in the event of complete disappearance of all symptoms and signs of the disease in all organs or partial (PR) when an improvement of at least 50% was observed in at least one organ affected by aGvHD. Stable or progressive disease were classified as no response (NR). Informed consent was obtained from all patients in accordance with the local ethics committee requirements. Data were analysed as of last data collection in June 2015. Additional details are available in the Data S1.

The median time from HSCT to MSC treatment was 62 days (range: 12–929 days), the median time from GvHD diagnosis to MSCs was 60 days (range: 11–905 days). Thirty-four patients received 1 MSC dose, while 16, 6 and 1 patients were treated with 2, 3 and 4 doses, respectively. The median

dose of MSCs was  $2.6 \times 10^6$ /kg body-weight per infusion (range:  $0.6$ – $15.6 \times 10^6$ /kg body-weight). No significant adverse reactions were observed.

We selected to assess clinical responses 1 week after the first dose to obtain an early predictor of clinical outcome. Overall, 32 patients (53%) responded to MSCs, with 1 (1.6%) and 31 (51.6%) patients achieving CR or PR, respectively. Amongst patients who received multiples doses, in most cases subsequent doses did not change the type of response obtained after the first dose, with the exception of two patients. One patient responded to the first dose with a PR, received a second one but relapsed a week after. The second patient achieved PR after the first dose and CR after the second.

The estimated median overall survival (OS) of all patients was 104 days [95% confidence interval (CI): 0–215 days] (Fig 1A), with a median follow-up of 741 days for patients alive (range 461–2521 days). Response to MSCs had a major impact on OS, with a longer estimated OS in responding patients compared with non-responders (Fig 1B). We evaluated the association between OS and gender, age, pre-MSCT therapy, interval from HSCT or aGvHD diagnosis to MSC treatment, grade of aGvHD, organ involved and the response to MSCs. By using both univariate and multivariate analysis, we found that the presence of any kind of response (CR or PR) assessed after 1 week from the first MSC infusion and the organ affected by GvHD were strong predictors for survival (Table SII).

We investigated whether we could identify factors associated with clinical responses. We found that patient gender, pre-MSCT therapy, interval from HSCT or aGvHD diagnosis to MSC treatment and grade of aGvHD did not affect clinical responses (Table SII). Conversely, organ involvement, age at HSCT and the dose of MSC infused were significantly associated with the response rate to MSC infusions (Table SII). The proportion of responders was 67% ( $n = 28$ ) amongst patients with involvement of gut, skin or both, but only 22% ( $n = 4$ ) amongst those with liver involvement (alone or in combination with skin and/or gut). Patients

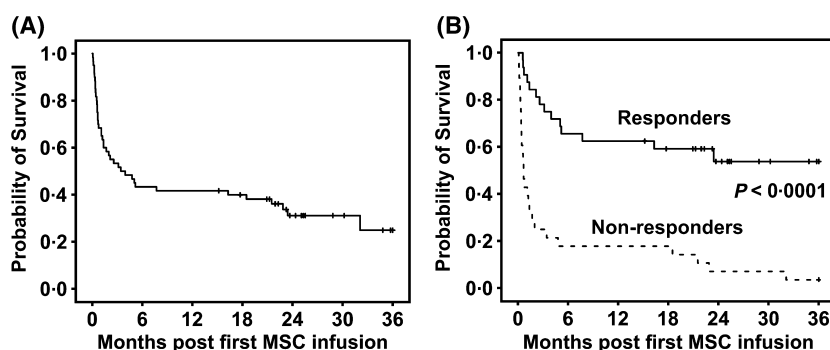


Fig 1. Probability of survival following MSC treatment. (A) Probability of survival of the whole cohort of patients. (B) Probability of survival of responders and non-responders. log-rank test,  $P < 0.0001$ ; hazard ratio: 0.2. Median survival in responders was not reached, while it was 20 days (95% CI 11–29 days) in non-responders. Overall survival estimates start from mesenchymal stromal cell (MSC) infusion.

younger than 20 years fared better, with 88% ( $n = 15$ ) of them responding to MSCs. Conversely, only 30% ( $n = 7$ ) and 43% ( $n = 6$ ) of those aged 20–50 years or older than 50 years responded, respectively. Lastly, higher response rates (77%,  $n = 13$ ) were observed in patients receiving MSC doses  $>3.0 \times 10^6/\text{kg}$  compared with patients receiving  $1.5\text{--}3.0 \times 10^6/\text{kg}$  (56%,  $n = 18$ ) or  $<1.5 \times 10^6/\text{kg}$  (9%,  $n = 1$ ) (Table SII). All these 3 factors remained significant in multivariate logistic regression analysis (Table I).

Our data demonstrate that clinical responses at 1 week after MSC infusion can be considered an early predictor of clinical outcome. Such an approach is in contrast with the current practice of evaluating responses at 28 days (Resnick *et al*, 2013; von Dalowski *et al*, 2016) and might understate the rate and magnitude of clinical responses. In fact, the rate of CR in our cohort is very low compared to other studies (Le Blanc *et al*, 2008; Sánchez-Guijo *et al*, 2014). In our study we could not document whether our responding patients eventually achieved CR at later time points, because we were unable to retrieve consistent data after day 7. However, the obtainment of any kind of response (either PR or CR) was sufficient to affect OS. This is consistent with previous studies in patients who, like ours, were refractory to several lines of treatment (Resnick *et al*, 2013; Kurtzberg *et al*, 2014; von Dalowski *et al*, 2016; Muroi *et al*, 2016; Dotoli *et al*, 2017; Servais *et al*, 2018). In contrast, other groups have reported that, when MSCs were administered soon after steroids, only CR are associated with improved OS (Le Blanc *et al*, 2008; Kebriaei *et al*, 2009; Sánchez-Guijo *et al*, 2014). The results of a very recent study seem to explain the differences and reconcile the inconsistency. Although patients who have been heavily pre-treated before MSC infusion achieve CR less frequently than those who receive MSCs as second line, the OS of the two groups does not differ, regardless of the response achieved (CR or PR) (Bader *et al*, 2018).

An early assessment of the response has therefore the advantage of providing crucial information to enable prompt management of alternative approaches both in clinical practice and in the context of clinical trials.

Because of the retrospective nature of the study, the dose range of MSCs was large, thereby allowing us to identify a significant association between higher doses and a positive response. This observation is in contrast with other reports (Ball *et al*, 2013; von Dalowski *et al*, 2016) but the discrepancy could be ascribed to the fact that, in those studies, the dose ranges were too narrow and the number of patients too small to identify any correlation between response and dose. Our data have been confirmed by a recent multicentre prospective study, in which patients who received doses of  $3\text{--}4 \times 10^6/\text{kg}$  body-weight had better responses and longer survival rates than those who received  $1\text{--}2 \times 10^6/\text{kg}$  body-weight (Servais *et al*, 2018). Our study confirms that patient age and the affected organ significantly affect responses to MSCs (Resnick *et al*, 2013; Sánchez-Guijo *et al*, 2014). In contrast, we could not find any association between GvHD

Table I. Multivariate logistic regression analysis for disease response.

	N	Odds ratio (95% CI)	P
Patient age, years			
<20	17	1.00	
20–50	23	0.10 (0.02–0.72)	0.022
>50	14	0.45 (0.05–4.66)	0.46
aGvHD organ, <i>n</i>			
Skin or Gut or Skin + Gut	42	1.00	
Other	18	0.10 (0.01–0.78)	0.028
MSC dose, $\times 10^6/\text{kg}$ body-weight			
<1.5	11	1.00	
1.5–3.0	32	6.90 (0.55–86.50)	0.14
>3.0	17	28.22 (1.70–477.04)	0.021

aGvHD, acute graft-versus-host disease; CI, confidence interval; MSC, mesenchymal stromal cell.

grade (Resnick *et al*, 2013) or time from GvHD to MSCs (Ball *et al*, 2013) and response to MSCs.

In summary, our data strengthen the role of the MSC recipient (Galleu *et al*, 2017) rather than the one of MSC donor or source in predicting clinical responses. This observation is supported by the findings of other groups (Le Blanc *et al*, 2008; Kebriaei *et al*, 2009; von Dalowski *et al*, 2016), whereby when MSCs from the same donor were used to treat several patients, only a proportion of them achieved remission. Such a perspective suggests that the variability in MSC manufacturing bears a limited impact (Trento *et al*, 2018). Overall, these findings provide an innovative angle that could be harnessed to improve the complex design of future clinical studies for the treatment of GvHD with MSCs.

## Acknowledgements

This work was partly supported by the Bloodwise Specialist Programme (14019 and 12006) (to F.D.), Bloodwise Clinical Research Training Fellowship (15029) (to A.G.). J.F.A. is a NIHR Senior Investigator and together with S.D., E.K., S.L., D.M. and R.S. acknowledge the support of the NIHR Imperial College Biomedical Research Centre. The authors would like to thank the late John Davis and Steve Marley who immensely contributed to the development of manufacturing clinical grade MSCs, Shab Uddin and Emma Bray, from the John Goldman Centre for Cellular Therapy Imperial College Healthcare NHS Trust, who contributed to the manufacturing of MSCs.

## Authorship Contributions

A.G. and S.D. collected and elaborated the data; R.S. and A.G. performed the statistical analysis; A.G. analysed the results and prepared the figures. D.M., R.W., D.M., D.R., K. O., E.K., E.T., M.S., P.S., S.L., A.B., A.P., J.A.S., A.V., B.K., H.H., J.F.A. and F.D. provided the data on patients; S.L. provided clinical grade MSCs, A.G. and F.D. wrote the original

draft of the manuscript; all authors contributed to the final version of the manuscript.

### Conflict of Interest Disclosures

Since 2016, J.A.S. has been Chair of NHS England Specialized Commissioning Clinical Reference Group for Blood and Marrow Transplantation. The other authors declare no competing financial interests.

### References

- Bader, P., Kuçi, Z., Bakhtiar, S., Basu, O., Bug, G., Dennis, M., Greil, J., Barta, A., Kállay, K.M., Lang, P., Lucchini, G., Pol, R., Schulz, A., Sykora, K.-W., von Luetichau, I., Herter-Sprie, G., Uddin, M.A., Jenkin, P., Alsultan, A., Buechner, J., Stein, J., Kelemen, A., Jarisch, A., Soerensen, J., Salzmänn-Manrique, E., Hutter, M., Schäfer, R., Seifried, E., Klingebiel, T., Bonig, H. & Kuçi, S. (2018) Effective treatment of steroid and therapy-refractory acute graft-versus-host disease with a novel mesenchymal stromal cell product (MSC-FFM). *Bone Marrow Transplantation*, **53**, 852–862.
- Ball, L.M., Bernardo, M.E., Roelofs, H., van Tol, M.J., Contoli, B., Zwaginga, J.J., Avanzini, M.A., Conforti, A., Bertaina, A., Giorgiani, G., Jol-van der Zijde, C.M., Zecca, M., Le Blanc, K., Frassoni, F., Egeler, R.M., Fibbe, W.E., Lankester, A.C. & Locatelli, F. (2013) Multiple infusions of mesenchymal stromal cells induce sustained remission in children with steroid-refractory, grade III-IV acute graft-versus-host disease. *British Journal of Haematology*, **163**, 501–509.
- von Dalowski, F., Kramer, M., Wermke, M., Wehner, R., Rollig, C., Alakel, N., Stolz, F., Parmentier, S., Sockel, K., Krech, M., Schmitz, M., Platzbecker, U., Schetelig, J., Bornhauser, M. & von Bonin, M. (2016) Mesenchymal stromal cells for treatment of acute steroid-refractory graft versus host disease: clinical responses and long-term outcome. *Stem Cells*, **34**, 357–366.
- Dotoli, G.M., De Santis, G.C., Orellana, M.D., de Lima Prata, K., Caruso, S.R., Fernandes, T.R., Rensi Colturato, V.A., Kondo, A.T., Hamerschlag, N., Simões, B.P. & Covas, D.T. (2017) Mesenchymal stromal cell infusion to treat steroid-refractory acute GvHD III/IV after hematopoietic stem cell transplantation. *Bone Marrow Transplantation*, **52**, 859–862.
- Ferrara, J.L., Levine, J.E., Reddy, P. & Holler, E. (2009) Graft-versus-host disease. *Lancet*, **373**, 1550–1561.
- Galleu, A., Rifo-Vasquez, Y., Trento, C., Lomas, C., Dolcetti, L., Cheung, T.S., von Bonin, M., Barbieri, L., Halai, K., Ward, S., Weng, L., Chakraverty, R., Lombardi, G., Watt, F.M., Orchard, K., Marks, D.L., Apperley, J., Bornhauser, M., Walczak, H., Bennett, C. & Dazzi, F. (2017) Apoptosis in mesenchymal stromal cells induces in vivo recipient-mediated immunomodulation. *Science Translational Medicine*, **9**, eaam7828.
- Kebriaei, P., Isola, L., Bahceci, E., Holland, K., Rowley, S., McGuirk, J., Devetten, M., Jansen, J., Herzig, R., Schuster, M., Monroy, R. & Uberti, J. (2009) Adult human mesenchymal stem cells added to corticosteroid therapy for the treatment of acute graft-versus-host disease. *Biology of Blood and Marrow Transplantation*, **15**, 804–811.
- Kurtzberg, J., Prockop, S., Teira, P., Bittencourt, H., Lewis, V., Chan, K.W., Horn, B., Yu, L., Talano, J.A., Nemecek, E., Mills, C.R. & Chaudhury, S. (2014) Allogeneic human mesenchymal stem cell therapy (remestemcel-L, Prochymal) as a rescue agent for severe refractory acute graft-versus-host disease in pediatric patients. *Biology of Blood and Marrow Transplantation*, **20**, 229–235.
- Le Blanc, K., Frassoni, F., Ball, L., Locatelli, F., Roelofs, H., Lewis, I., Lanino, E., Sundberg, B., Bernardo, M.E., Remberger, M., Dini, G., Egeler, R.M., Bacigalupo, A., Fibbe, W. & Ringden, O. (2008) Mesenchymal stem cells for treatment of steroid-resistant, severe, acute graft-versus-host disease: a phase II study. *Lancet*, **371**, 1579–1586.
- Marigo, I. & Dazzi, F. (2011) The immunomodulatory properties of mesenchymal stem cells. *Seminars in Immunopathology*, **33**, 593–602.
- Muroi, K., Miyamura, K., Okada, M., Yamashita, T., Murata, M., Ishikawa, T., Uike, N., Hidaka, M., Kobayashi, R., Imamura, M., Tanaka, J., Ohashi, K., Taniguchi, S., Ikeda, T., Eto, T., Mori, M., Yamaoka, M. & Ozawa, K. (2016) Bone marrow-derived mesenchymal stem cells (JR-031) for steroid-refractory grade III or IV acute graft-versus-host disease: a phase II/III study. *International Journal of Hematology*, **103**, 243–250.
- Resnick, I.B., Barkats, C., Shapira, M.Y., Stepensky, P., Bloom, A.L., Shimoni, A., Mankuta, D., Varda-Bloom, N., Rheingold, L., Yeshurun, M., Bielorai, B., Toren, A., Zuckerman, T., Nagler, A. & Or, R. (2013) Treatment of severe steroid resistant acute GVHD with mesenchymal stromal cells (MSC). *American Journal of Blood Research*, **3**, 225–238.
- Sánchez-Guijo, F., Caballero-Velázquez, T., López-Villar, O., Redondo, A., Parody, R., Martínez, C., Olavarría, E., Andreu, E., Prósper, F., Díez-Campelo, M., Regidor, C., Villaron, E., López-Corral, L., Caballero, D., Cañizo, M.-C. Del & Pérez-Simon, J.A. (2014) Sequential third-party mesenchymal stromal cell therapy for refractory acute graft-versus-host disease. *Biology of Blood and Marrow Transplantation: Journal of the American Society for Blood and Marrow Transplantation*, **20**, 1580–1585.
- Servais, S., Baron, F., Lechanteur, C., Seidel, L., Selleslag, D., Maertens, J., Baudoux, E., Zachee, P., Van Gelder, M., Noens, L., Kerre, T., Lewalle, P., Schroyens, W., Ory, A. & Beguin, Y. (2018) Infusion of bone marrow derived multipotent mesenchymal stromal cells for the treatment of steroid-refractory acute graft-versus-host disease: a multicenter prospective study. *Oncotarget*, **9**, 20590–20604.
- Trento, C., Bernardo, M.E., Nagler, A., Kuçi, S., Bornhäuser, M., Köhl, U., Strunk, D., Galleu, A., Sanchez-Guijo, F., Gaipa, G., Intronà, M., Bukauskas, A., Le Blanc, K., Apperley, J., Roelofs, H., Van Campenhout, A., Beguin, Y., Kuball, J., Lazzari, L., Avanzini, M.A., Chabannon, C., Bonini, C. & Dazzi, F. (2018) Manufacturing mesenchymal stromal cells for the treatment of graft-versus-host disease: a survey amongst centers affiliated to the European Society of Blood and Marrow Transplantation. *Biology of Blood and Marrow Transplantation*, **24**, 2365–2370.

### Supporting Information

Additional supporting information may be found online in the Supporting Information section at the end of the article.

**Data S1.** Materials and methods.

**Table SI.** Patients' characteristics.

**Table SII.** Univariate analyses of probabilities of survival and disease response.