



Deposited via The University of Leeds.

White Rose Research Online URL for this paper:

<https://eprints.whiterose.ac.uk/id/eprint/139640/>

Version: Accepted Version

Article:

Westbrook, JA, Wood, SL, Cairns, DA et al. (2019) Identification and validation of DOCK4 as a potential biomarker for risk of bone metastasis development in patients with early breast cancer. *The Journal of pathology*, 247 (3). pp. 381-391. ISSN: 0022-3417

<https://doi.org/10.1002/path.5197>

This article is protected by copyright. All rights reserved. This is the peer reviewed version of the following article: Identification and validation of DOCK4 as a potential biomarker for risk of bone metastasis development in patients with early breast cancer, which has been published in final form at <https://doi.org/10.1002/path.5197>. This article may be used for non-commercial purposes in accordance with Wiley Terms and Conditions for Use of Self-Archived Versions.

Reuse

Items deposited in White Rose Research Online are protected by copyright, with all rights reserved unless indicated otherwise. They may be downloaded and/or printed for private study, or other acts as permitted by national copyright laws. The publisher or other rights holders may allow further reproduction and re-use of the full text version. This is indicated by the licence information on the White Rose Research Online record for the item.

Takedown

If you consider content in White Rose Research Online to be in breach of UK law, please notify us by emailing eprints@whiterose.ac.uk including the URL of the record and the reason for the withdrawal request.

Identification and validation of DOCK4 as a potential biomarker for risk of bone metastasis development in patients with early breast cancer

Jules A. Westbrook^{1,2}, Steven L. Wood^{1,2}, David A. Cairns^{2,4}, , Kathryn McMahon³, Renu Gahlaut³, Helene Thygesen³, Mike Shires³, Stephanie Roberts², Helen Marshall⁴, Maria R. Oliva¹, Mark J. Dunning⁵, Andrew M. Hanby³, Peter J. Selby^{2,3}, Valerie Speirs^{3,6}, Georgia Mavria³, Robert E. Coleman¹, Janet E. Brown^{1,2*}

¹Academic Unit of Clinical Oncology, Department of Oncology and Metabolism, University of Sheffield, UK; ²Clinical and Biomedical Proteomics Group, Leeds Institute of Cancer and Pathology, University of Leeds, UK; ³Leeds Institute of Cancer and Pathology, University of Leeds, UK; ⁴Clinical Trials Research Unit, Leeds Institute of Clinical Trials Research, University of Leeds, UK; ⁵Institute for Translational Neuroscience, Department of Neuroscience, University of Sheffield, UK; ⁶Institute of Medical Sciences, University of Aberdeen, UK.

Conflicts of interest: Prof Janet Brown received fees from Novartis and Amgen for Advisory Boards and Speakers Bureaux; Prof Rob Coleman received consultancy fees from Amgen, Astellas and Boehringer Ingelheim, and lecture fees from Amgen. All other authors declared no conflicts.

**Correspondence to: Janet E Brown, Academic Unit of Clinical Oncology, Department of Oncology and Metabolism, University of Sheffield, Weston Park Hospital, Whitham Road, Sheffield S10 2SJ, UK. E-mail j.e.brown@sheffield.ac.uk*

This article has been accepted for publication and undergone full peer review but has not been through the copyediting, typesetting, pagination and proofreading process, which may lead to differences between this version and the Version of Record. Please cite this article as doi: 10.1002/path.5197

ABSTRACT

Skeletal metastasis occurs in around 75% of advanced breast cancers, with the disease incurable once cancer cells disseminate to bone, but there remains an unmet need for biomarkers to identify patients at high risk of bone recurrence. This study aimed to identify such a biomarker and to assess its utility in predicting response to adjuvant zoledronic acid.

We used quantitative proteomics (SILAC-MS), to compare protein expression in a bone-homed variant (BM1) of the human breast cancer cell line MDA-MB-231 with parental non-bone-homing cells to identify novel biomarkers for risk of subsequent bone metastasis in early breast cancer. SILAC-MS showed that Dedicator of cytokinesis protein 4 (DOCK4) was upregulated in bone-homing BM1 cells, confirmed by Western blotting. BM1 cells also had enhanced invasive ability compared with parental cells which could be reduced by DOCK4-shRNA.

In a training Tissue Microarray (TMA) comprising 345 patients with early breast cancer, immunohistochemistry followed by Cox regression revealed that high DOCK4 expression correlated with histological grade ($p=0.004$) but not oestrogen receptor status ($p=0.19$) or lymph node involvement ($p=0.15$). A clinical validation TMA used tissue samples and the clinical database from the large AZURE adjuvant study ($n=689$). Adjusted Cox regression analyses showed that high DOCK4 expression in the control arm (no zoledronic acid) was significantly prognostic for first recurrence in bone (HR 2.13, 95%CI 1.06-4.30, $p=0.034$). No corresponding association was found in patients who received zoledronic acid (HR 0.812, 95%CI 0.176-3.76, $p=0.790$), suggesting that treatment with zoledronic acid may counteract the higher risk for bone relapse from high DOCK4-expressing tumours.

High DOCK4 expression was not associated with metastasis to non-skeletal sites when these were assessed collectively. In conclusion, high DOCK4 in early breast cancer is significantly

associated with aggressive disease and with future bone metastasis and is a potentially useful biomarker for subsequent bone metastasis risk.

Keywords: DOCK4; Bone metastasis; breast cancer; biomarker; proteomics

INTRODUCTION

Despite substantial progress in early detection and treatment, breast cancer still accounts for 15% of female cancer-related deaths, with skeletal metastasis occurring in over 70% of patients with advanced disease [1]. Relapse in bone typically occurs years after apparently successful treatment of early breast cancer and a period of tumour dormancy. Bone-targeted agents such as bisphosphonates [2] and denosumab [3] are widely used to treat the skeletal complications of established bone metastases, but have also recently been the focus of several large adjuvant studies in early breast cancer to assess their potential to reduce the frequency of relapse in bone and subsequent breast cancer mortality. The phase III AZURE trial (BIG01/04-ISRCTN79831382) recruited 3360 patients with stage II/III breast cancer randomised (1:1) to 5 years of standard adjuvant therapy alone (control) or standard therapy with zoledronic acid (zoledronate) [4]. Although there was no significant difference in invasive disease-free survival in the overall population, zoledronate improved disease outcomes for women who were >5 years postmenopausal at diagnosis and a meta-analysis of 26 randomised trials (N=18,766), demonstrated that bone recurrences (HR=0.72; 95%CI 0.60, 0.86, 2p=0.0002) and breast cancer deaths (HR 0.82; 95%CI 0.73, 0.93, 2p=0.002) were reduced by adjuvant bisphosphonates in post-menopausal women [5]. Breast cancer practice has changed as a result of these studies, but they also highlight the unmet need for biomarkers to identify patients with early breast cancer who are most at risk of developing bone recurrence, thus permitting tailoring of treatment to patients most likely to benefit and sparing patients who would not benefit, from potential complications [6].

Proteomic studies are yielding key information about breast cancer metastasis to bone [7–9] and, in a recent proteomics-based study, validated in 571 patients, we showed that the proteins CAPG and GIPC1 had both prognostic and predictive potential as biomarkers of bone metastasis [10]. In the current study, we hypothesized that proteins, identified by proteomics

and up-regulated in breast cancer cells which have a propensity to home to bone, would be potential biomarkers for metastasis and could play key mechanistic roles in the process of metastatic dissemination to bone.

MATERIALS AND METHODS

[EdQ: please provide city, state or province, country details for each supplier at first mention, including suppliers of software]

[EdQ: for all primary antibodies please provide catalogue/clone number, dilution used, supplier, (with city, state or province, country details at first mention of supplier)]

Proteomic studies (Further details to those below are given in the text and in supplementary material, Figure S1).

Cell culture and SILAC (Stable Isotope Labelling by Amino acids in Cell culture)

The human breast cancer cell line MDA-MB-231 (“PCC”, parental control cells, obtained originally from ATCC) and a bone-homing variant (“BM1”, bone metastatic cells) [11] (the latter supplied by Prof. Joan Massagué, Sloan-Kettering Institute, New York), were used in a ‘classical’ SILAC experiment [12,13]. PCC and BM1 cells were cultured in ‘heavy’ SILAC medium and ‘light’ medium for ~10 doublings to ensure >95% isotope label incorporation (Heavy media), and all cells were used within 10 doublings. ‘Heavy’ SILAC media consisted of DMEM containing L-arginine ($^{13}\text{C}_6$, $^{15}\text{N}_4$) and L-lysine ($^{13}\text{C}_6$, $^{15}\text{N}_2$) (R10K8, DMEM-15, Dundee Cell Products, Dundee, UK) supplemented with dialysed (10 kDa molecular weight cut-off [MWCO]) foetal bovine serum (D-FBS100, Dundee Cell Products, Dundee, UK). ‘Light’ media was DMEM but without the heavy isotopes (R0K0) and with 10% dialysed (10 kDa MWCO) foetal bovine serum.

LC-MS/MS

Equal amounts of protein (40 μ g) from light- and heavy-labelled samples were combined, reduced, alkylated, and separated on a 1D SDS-PAGE gel. LC-MS-MS was performed by Dundee Cell products, Dundee, Scotland, UK. Ten slices of the gel-resolved proteins were cut and proteins were digested into peptides using trypsin. Tryptic peptides were separated using a nanoflow LC-System coupled to an LTQ-Orbitrap mass spectrometer (ThermoFisher Scientific, Warrington, UK).

Quantitation and bioinformatics analysis

Quantitation was performed using the software Max Quant (<http://www.maxquant.org/downloads.htm>), with peptide ratios calculated for each arginine- and/or lysine-containing peptide as the peak area of labelled arginine/lysine divided by the peak area of non-labelled arginine/lysine for each single-scan mass spectrum. Peptide ratios for all arginine- and lysine-containing peptides sequenced for each protein were averaged. Data output from Max Quant were analysed further using Excel and R (v. 3.2, <http://www.r-project.org/>) to select differentially expressed proteins.

Western blotting

The differential expression of DOCK4, and confirmation of DOCK4 knockdown, was assessed in cell lysates using Western blotting and an infra-red (IR) immunodetection system (LI-COR Biosciences, Nebraska, USA), as well as by Enhanced ChemiLuminescence (ECL, Promega, Southampton, UK). Primary antibodies used were: DOCK4 (Abcam, Cambridge, UK: ab56743, mouse monoclonal, 0.1 μ g/mL); beta-tubulin (Abcam ab6046, rabbit polyclonal, 1/5000 dilution). Secondary antibodies were: #925-68070 IRDye 680RD goat anti-mouse IgG (H+L), LI-COR Biosciences, 1/5000 dilution, for detection of DOCK4 in the 700 nm channel (red); #925-32211 IRDye 800CW goat anti-rabbit IgG (H+L), LI-COR Biosciences, 1/5000 dilution, for detection of beta-tubulin in the 800 nm channel (green). For ECL secondary antibodies were Goat-anti-mouse-HRP (Abcam, ab 6789) and goat anti-rabbit-HRP (Abcam, Ab6721, both 1:2,500). Normalised densitometric data from six replicate runs of the fluorescent-

antibody immunoprobed samples, (and three blots from the ECL-visualized samples), were tested for significance using Student's t-test.

Generation of cell lines with stable DOCK4 knockdown and 3D invasion assay

DOCK4 expression was knocked down in the BM1 and PCC cell lines by lentiviral delivery of a validated shRNA targeting DOCK4 (shR), with the use of an empty vector (cv) as control [14]. Wild-type (wt) cells were also studied as a control. Inclusion of a GFP marker protein within the lentiviral vectors enabled FACS separation of vector-bearing clones and subsequent culture of pure cell populations. Infected cells were selected by FACS sorting 48 h after lentiviral infection. Confirmation of knockdown of DOCK4 protein expression was carried out by Western blotting as described above. Quantification of the blots was performed by densitometric scanning.

To study the effects of reduced expression of DOCK4 protein in PCC and BM1, an invasion assay was carried out using the IncuCyte® platform (Essen BioScience, Welwyn Garden City, UK) following the manufacturer's instructions for a 'scratch-wound' procedure. In brief, triplicate wells of an ImageLock 96-well plate (Essen BioScience 4379) were over-laid with thin Matrigel onto which wt, cv cells or shR treated cells of PCC (50 000 cells /well) and BM1 cell lines (100 000 cells/well) were seeded (50 000 cells/well and 100 000 cells/well, respectively), and a homogeneous scratch was created using the Incucyte® WoundMaker tool when the cell monolayer was confluent. This system enables assessment of both cell invasion and migration ability in a single assay. Cell invasion/migration was assessed by measuring the closure of the scratch introduced on the confluent cell monolayer. Experiments were performed in triplicate using independent cultures of cells. Data were analysed using IncuCyte® software and Excel.

Patients, samples and immunohistochemistry

All analyses on patient samples were performed with Ethics approval (Leeds training set, 06/Q1206/180; AZURE validation set 55/03/182).

Initial studies of DOCK4 expression were performed using a training TMA comprising 345 specimens with defined tumour type, grade, ER, lymph node (LN) and overall survival (OS) data, from breast tumours diagnosed at the Leeds Teaching Hospitals NHS Trust (1987–2005). Samples were stained using a rabbit polyclonal DOCK4 antibody (1:100, Bethyl Laboratories Inc, Montgomery, TX, USA; A302-263A) and corroborated in a smaller cohort with a mouse monoclonal antibody (1:50, Abcam; Ab56743). Additional details are provided in supplementary material, Supplementary materials and methods.

The main analyses for correlations with risk of bone metastasis were performed on TMAs constructed from primary tumours from a sub-set of patients within the overall AZURE trial (n = 689). Due to the relatively high prevalence of bone metastatic outcomes and the long follow-up (median 84 months [interquartile range 66-93]), these TMAs provide an excellent resource for validation of protein biomarkers emerging from our proteomics studies. Protein expression was assessed using the Bethyl DOCK4 antibody (A302-263A). DOCK4-specificity for this antibody was confirmed by immunohistochemistry using FFPE cell pellets from BM1 cells with and without DOCK4 knockdown (supplementary material, Figure S2). Full gel images for the antibodies using ECL as the visualization method with use of positive and negative control cell-lines are included (supplementary material, Figure S3).

Digital images of immunostained TMA cores were created using a digital scanner (Aperio Scan Scope XT, Milton Keynes, UK). Cytoplasmic staining assessment in the invasive margins of primary breast tumours was carried out independently by two trained operators, blinded to outcome data, under the supervision of an experienced breast histopathologist (AMH) who also adjudicated discrepant scores. The level of agreement of the two scores was measured using Cohen's kappa coefficient. All scores were based upon intensity of staining and not the number

of positive cells. Staining intensity was ranked based on a three tier ordinal categorical system used to rank the tumours based on intensity of cytoplasmic staining [15,16] where 1 = weak staining; 2 = moderate, easily perceived staining; 3 = strong/intense staining, i.e. the scoring was based on staining intensity only.

Statistical analyses

All immunohistochemical analyses followed REMARK guidelines [17]. Statistical analyses evaluated the associations between protein expression and relevant clinical and pathological variables (e.g. ER/PR/HER2 status) using Fisher's Exact test (categorical variables) and the Kruskal-Wallis test (continuous variables), before assessing prognostic and predictive associations with time-to-event data (time to first distant recurrence, time to first skeletal recurrence, time to first non-skeletal recurrence) using Cox proportional hazards regression, the Kaplan-Meier estimate of the survival function and the log-rank test. Time to first distant recurrence was defined as the time from the date of randomisation to the date of the distant recurrence. In analyses, other types of events were censored, e.g. if a local recurrence occurred prior to any distant recurrence, the patient would be censored at the date of the local recurrence. Time to first skeletal recurrence and first non-skeletal recurrence were defined similarly. Time to first skeletal recurrence irrespective of all other previous recurrences was also investigated. Time to event analysis was first performed within treatment arms to identify prognostic associations with the biomarkers. The predictive heterogeneity of effect between treatment arms for time to distant events was assessed in multivariable analysis by including an interaction term in the Cox proportional hazard regressions for treatment arm and biomarker (while adjusting for systemic therapy plan, ER status and lymph node involvement). All significance tests were two-sided and were designated significant at the 5% level.

RESULTS

This article is protected by copyright. All rights reserved.

Proteomic identification of proteins specifically associated with breast cancer bone metastasis

Proteins identified in the ‘forward’ and ‘reciprocal’ labelling experiments (supplementary material, Figure S1) were aligned and the most robust, highest quality, data were extracted for analysis using the following stringent selection criteria: protein identified in both datasets; ≥ 2 so-called razor+unique peptides assigned to identifications (clarifies assignment of protein identification); equal numbers of peptides and razor+unique peptides assigned to identifications. This resulted in 2006 proteins taken forward for analysis out of a total of 2999 identified in the complete data set (Full proteomic data are available on the publicly accessible database ORDA (<https://orda.shef.ac.uk/>)).

The aligned dataset was filtered further by using a 1.75-fold cut-off to distinguish change (up or down) in protein expression, resulting in 48 proteins up-regulated in BM1 relative to PCC cells (supplementary material, Table S1). These were prioritized for further study using literature evidence of relevance to bone metastasis, the magnitude of the differential expression fold change and evidence (where available) of non-association with lung metastases, based on correlation with our other proteomic datasets that included a MDA-MB-231 variant which specifically homes to lung (10, 11). This allowed us to identify proteins likely to be involved in breast cancer metastasis to bone. Consequently, four proteins had potential for further consideration: Deducator of cytokinesis protein 4 (DOCK4, fold-change 2.7), SerpinB2 (fold-change 15.6), cell-division cycle protein 20 homolog (CDC20, fold-change 3.7), and pericentrin (fold-change 2.5). While all four have published evidence linking them to breast cancer we focused on DOCK4 for further investigation and clinical validation based on its published role in cell migration including breast cancer cell migration, metastasis [18-21] and tumour angiogenesis (14), processes known to be integral to dissemination of tumour cells and

development of bone metastases. Moreover, DOCK4 functions as a guanine nucleotide exchange factor for the GTPase Rac1, a key regulator of motility [14,19,20] and localises at actin-rich protrusions in migrating breast cancer cells [19], whilst SNPs within the promoter region of *DOCK4* have been detected in breast cancer [22].

Confirmation of DOCK4 upregulation in BM1 cells

Analysis of DOCK4 expression levels by Western blotting in the BM1 and PCC cell-lines showed a 2-fold increase in DOCK4 expression within the bone homing BM1 cell line compared to parental PCC (Figure 1A,C). Increased expression of DOCK4 within BM1 cell total cell lysates was also confirmed using ECL-based visualization.

DOCK4 is upregulated during breast cancer cell-motility

There was significant knockdown of DOCK4 protein expression in the BM cell type following lentiviral delivery of DOCK4 shRNA (shR) compared with the empty vector (cv) control (Figure 1B,D). In the wound healing assay, BM1 cells (control vector) had enhanced invasive and migratory ability compared with the PCC cells, with 13% and 39% wound closure at 6 and 12 h respectively, compared to 9 and 20% for PCC at 6 and 12 h (Figure 1E,F). Invasion through Matrigel was reduced in cells with DOCK4 knockdown (shR) compared to control, with significant differences in wound closure observed for both cell types at 6 h and 12 h, and with a greater effect seen at 6 h.

Association between DOCK4 expression and tumour grade in local breast tumour array

DOCK4 expression was initially assessed in a local breast tumour array of 345 unselected breast tumours (88% ductal, 9% lobular, 3% other) with patient data available on tumour grade (18% Grade 1, 44% Grade 2, 38% Grade 3) oestrogen receptor (ER), and axillary lymph node (LN) involvement. Examples of typical staining patterns are shown in Figure 2. Analysis revealed a

significant association between DOCK4 expression and histological tumour type ($p = 0.002$) and tumour grade ($p=0.004$) with 86.4% Grade 3 and 77.3% grade 2 ductal carcinomas expressing moderate/high DOCK4 (as opposed to 62.5% grade 1 carcinomas), but no association with ER status (positive versus negative, $p=0.185$) or LN status (involved versus not involved, $p=0.15$). These data suggested that DOCK4 expression was associated with tumour aggressiveness and further supported our selection of DOCK4 for clinical validation in the AZURE patient cohort.

Clinical validation of DOCK4 expression in breast cancer patients in the AZURE study.

Independent scoring of stained TMAs by two trained operators (JW and SR) under the supervision of AMH yielded a Cohen's kappa coefficient value of 0.86, signifying excellent agreement. Possible associations between clinical outcomes and immunohistochemistry scores for DOCK4 were tested for 689 patients in the AZURE study (330 control arm, 359 zoledronate arm). Demographic data for these patients are similar to those of the whole AZURE population (Table 1). DOCK4 had no significant associations with age, lymph node involvement, ER status, tumour grade (though this approached significance, $p = 0.062$), menopausal status, systemic therapy, chemotherapy and statin use. HER2 status was not a mandated assessment but was available for 307 participants. DOCK4 was significantly associated with HER2 status with a smaller proportion of patients with low DOCK4 being HER2 positive ($P<0.001$). However, adjustment for HER2 status had no impact on subsequent statistical analyses in either control or zoledronate arms.

AZURE patients: Association of DOCK4 expression with distant event recurrence.

Control arm. Initial analyses considered possible associations between DOCK4 expression (scored as 1, 2 or 3) and disease-free survival (DFS) for distant recurrence components of DFS.

Whilst we found no statistically significant association between DOCK4 and first event in non-skeletal sites, taken as a group ($p = 0.08$, Figure 3A) or in any distant site ($p = 0.475$, Figure 3D) higher DOCK4 was significantly associated with increased risk of developing first event as skeletal recurrence whether only in bone ($p = 0.043$, Figure 3C) or in bone and other distant sites concurrently ($p = 0.033$, Figure 3B).

Subsequently, dichotomised TMA expression scores were used where high DOCK4 expression (score of 3) was compared with low DOCK4 expression (score of 1 or 2). Using these categories, Kaplan-Meier estimates of the survival function for time to distant recurrence confirmed that high DOCK4 is significantly prognostic for first distant recurrence involving bone only (HR 2.1; 95% CI 1.09, 4.15, $p = 0.024$, Figure 4A). For first distant event involving both skeletal and other site(s) concurrently, although the same trend was observed, the association did not reach significance (HR 1.6; 95%CI 0.88, 3.05, $p = 0.113$, Figure 4C).

Where the first distant event was in non-skeletal sites (taken as a group), the corresponding dichotomised analyses (Figure 4E), suggested a non-significant reduced risk of non-skeletal events with high DOCK4 (HR = 0.2; 95%CI 0.03, 1.51, $p = 0.12$). In the dichotomised analyses, we found no association between high DOCK4 and first skeletal event, whether or not other distant events had occurred first, (HR = 1.3; 95%CI 0.73, 2.33, $p = 0.373$), suggesting that the inclusion of metastasis in other sites, before eventual spread to bone, counters the significant association seen with the bone only analyses.

Zoledronate arm.

In the zoledronate arm, dichotomised analyses revealed no association between DOCK4 and bone only distant events (HR 0.6; 95%CI 0.14, 2.62, $p = 0.488$, Figure 4B), ie the increased risk of bone-only first event posed by high DOCK4 in the control arm was abolished by zoledronate.

This suggests that DOCK4 may act as a predictive biomarker for prevention of bone metastases by zoledronate. This was confirmed by examining Kaplan-Meier plots for DOCK4 high and DOCK4 low comparing control and zoledronate patients for the various events (supplementary material, Figure S5). Figure S5B clearly shows the reduction in bone metastasis-only risk as a first event (HR 0.1; 95% CI 0.03, 0.5, $p=0.003$) in patients with high DOCK4 treated with zoledronate.

For the first event involving bone and other sites concurrently, there was no significant association seen in the zoledronate group (Figure 4D).

Cox proportional hazards regressions adjusted for systemic therapy plan, ER status, HER2 status and lymph node involvement

Control arm. Adjusted analyses (Table 2) confirmed that high DOCK4 expression was significantly prognostic for skeletal only events (HR 2.13, 95% CI 1.06, 4.30, $p = 0.034$). Similar analyses for first recurrence events involving the skeleton and other site(s) concurrently showed no significant association (HR 1.63, 95%CI [0.86, 3.12], $p = 0.137$; Table 2). No significant association was found in these adjusted analyses for non-skeletal distant events when assessed collectively. Analysis of relationships to other individual metastatic sites was not possible with this data-set.

Zoledronate arm. The significant prognostic effect of DOCK4 for skeletal only metastases seen in the control arm patients was not observed in the zoledronate arm (HR 0.812, 95%CI [0.18, 3.76], $p = 0.790$) (Table 2), suggesting again that the increased risk for skeletal metastasis in patients with high DOCK4 levels at baseline, may be counteracted by treatment with zoledronate. This was tested formally by including an interaction term in the Cox proportional hazards regressions for treatment arm and DOCK4 level for time to first event, skeletal only. These analyses suggested a predictive effect for treatment with zoledronate (HR 0.12 95%CI

0.03, 0.56; likelihood ratio test $p=0.063$, [hazard ratio <1 indicates improvement with zoledronate]), though this did not reach significance.

Overall survival and menopausal status

As shown in Figure 4I,J and supplementary material, Figure S5I,J, although there appeared to be a trend towards high DOCK4 producing worse outcome, DOCK4, expression level did not impact significantly on overall survival in either the control or the zoledronate arms. When post-menopausal and pre-menopausal patients were analysed separately, although similar associations with bone metastasis to the full group were observed, there was a loss of statistical significance and this may be due to the smaller numbers involved.

DISCUSSION

Breast cancer bone metastasis causes significant morbidity and biomarkers which can predict the development of bone metastases are badly needed. In this translational study, SILAC-MS-based comparison of bone homing and non-homing cell variants and functional *in vitro* work, coupled with rigorous clinical validation enabled us to identify DOCK4 as a potential biomarker for this purpose.

Our discovery science used MDA-MB-231 and its bone-homing variant BM1. The MDA-MB-231 cell line is regarded as ‘gold standard’ for this type of research as it was derived from a pleural effusion of a breast cancer patient with widespread tumour metastasis, many years after resection of the primary tumour [23]. Furthermore, the validity of this approach has already been proven in our previous work in which the importance of the proteins CAPG and GIPC1 as biomarkers was discovered and subsequently clinically validated [10]. Here, we focused on DOCK4, a key guanine nucleotide exchange factor (GEF) regulating the activation of the small

GTPase Rac1 (19,20,24,25). DOCK4-mediated activation of Rac1 has been demonstrated to promote actin reorganization and the formation of lamellipodia at the leading edge of breast cancer cells [19] as well as the formation of lateral filopodia, and blood vessel lumen morphogenesis within tumour angiogenesis [14].

DOCK4 was expressed in parental MDA-MB-231 cells (PCC), but was more abundant in the bone-homing variant (BM1). DOCK4 knockdown inhibited the migration of both PCC and BM cell-lines with inhibition being greater at 6 h than 12 h post assay-initiation, suggesting that DOCK4-mediated cell invasion may be important in the earlier stages of breast cancer cell-migration. However, enhanced cell-migration and invasiveness resulting from high DOCK4 expression is only one aspect of the bone-homing cells which makes them bone homing. In particular, c-MAF targets and other proteins elevated in the bone homing cells might drive the bone-homing phenotype as well as DOCK4. Our observation that, in patients, high DOCK4 is specifically associated with first distant metastasis in bone, may be linked to these factors, including those in the bone micro-environment. Notably, in this regard, the specific association of high DOCK4 with bone metastasis at any time, is lost once metastasis has occurred elsewhere. This presumably indicates the substantially altered metastatic environment influencing bone metastasis once non-bone metastases have occurred. Association with bone as first metastatic site is lost in zoledronate-treated patients suggesting that zoledronate treatment reduces the risk of bone metastasis to a level similar to that in non-high DOCK4 patients.

This work has shown that DOCK4 has a similar prognostic and predictive profile to CAPG and GIPC1 for the prognosis of skeletal-only relapse within control arm patients. DOCK4 was also similar to the previously discovered markers in not being predictive of non-skeletal recurrence events within control arm patients. Treatment with zoledronate abolished the association of high levels of all three of these proteins in development of skeletal-only metastasis.

DOCK4 expression is induced by the cytokine transforming growth factor- β (TGF β) acting via the Smad pathway, and this is a key step in TGF β 's pro-metastatic effect [21]. GIPC1 is also a key scaffolding protein which functions to transmit signals from the TGF β -receptor and its co-receptor endoglin to downstream Smad-phosphorylation [26]. TGF β is a regulator of numerous steps within metastasis including intravasation, extravasation and cancer-cell survival at distant organ sites [27]. The transcription factor c-MAF has recently been identified as a key regulator of breast cancer bone metastasis [28,29]. c-MAF expression is induced by TGF β and a recent patent application showed that DOCK4-expression correlates with MAF-expression within primary tumours [30]. Examination of our quantitative proteomic data set identified 36 proteins also present in the c-MAF gene set (a panel of 109 genes in total). Within the 36 proteins quantified by proteomics, 15 proteins displayed the same change (increase or decrease of expression within bone-homing cells compared to parental cells) as the relevant gene transcripts in response to c-MAF expression. DOCK4 may therefore be a component of a protein panel which responds to elevated c-MAF expression within bone homing breast cancer cells.

As well as being a prognostic biomarker, our data also provide evidence that DOCK4 is a potential predictive biomarker in terms of the treatment effect of zoledronate for bone as first metastatic site, since the addition of zoledronate appears to reduce the risk of patients with high DOCK4 levels to that of patients with lower DOCK4 levels. There was also a substantial HR in favour of a treatment effect when an interaction term was included in the Cox proportional hazards regression, though this fell short of statistical significance and additional testing in a further patient cohort is needed before DOCK4 can be confirmed as a predictive biomarker.

Our current study is supported further through analysis of *DOCK4* gene expression within a publicly available database where high *DOCK4* transcript levels predicted distant bone metastatic spread of breast cancer (supplementary material, Figure S4)

Interestingly, *DOCK4* was not prognostic for DFS in terms of metastasis at non-skeletal sites, taken as a group (N=28). Indeed, data for the control arm in Figure 4 and Table 2 (and supplementary material, Figure S5) suggest that high *DOCK4* may be associated with a reduction in the occurrence of non-skeletal metastasis, an effect which is not seen in the zoledronate arm. Whilst zoledronate is advantageous in terms of preventing skeletal metastasis in *DOCK4* high patients, it may also remove a potentially advantageous effect for non-skeletal metastases. Whilst our data do not point to any particular mechanistic explanation for this effect, it is possible that zoledronate may have effects other than on the skeleton and, in this respect, we note the negative impact of zoledronate on overall survival in pre-menopausal women recently reported, where in non-postmenopausal patients with MAF-positive tumours, zoledronate was associated with worse invasive-disease-free survival and overall survival [28]. Clearly, these factors need to be borne in mind in the consideration of *DOCK4* as a predictive biomarker for zoledronate response in bone metastasis prevention.– Because our analyses included non-skeletal sites as a single group, they do not exclude the possibility of *DOCK4* association with a less common site for metastatic spread than the skeleton.

There are some limitations to the current study. Although the number of patients available for analysis from the AZURE study considerably exceeds that required for statistical powering, there is currently no equivalent independent sample set available for further validation. Also, breast cancer metastasis to bone involves numerous autocrine and paracrine signalling events [31], and these and the directionality and recruitment of key signalling pathways that migration

involves, is clearly not replicated within the invasion assay used in the current study. More complex tools to assess this are not currently available.

Further studies of the mechanistic role of DOCK4 in breast cancer bone metastasis and implications for pharmacological inhibition is justified by our work.

Acknowledgements:

We thank the patients in the AZURE study. We thank Cancer Research UK for the award of a Clinician Scientist Fellowship (to JEB, C18605/A 10048) and for support to Sheffield ECOMC, Yorkshire Cancer Research for a project award (S315 to JEB, REC, VS), Breast Cancer Now for pilot and project grant awards (2012MaySP047 and 2016MayPR74 to GM and VS) and the UK Medical Research Council for a Career Development Fellowship [G0802416] to DAC. We also thank Adam Davison and Liz Straszynsky for assistance with cell sorting, and Paul Morris for assistance with immunohistochemistry.

Author contribution statement

JW, SW, KM, RG, HT, MO, MD, SR, AH, PS, VS GM, RC and JB conceived and/or carried out the experiments (KM, VS and GM contributed the data in the training cohort). JW, DC, SW, HM, AH, MD, PS, VS, GM, RC and JB analysed the data, all authors were involved in writing the manuscript and had final approval of the submitted version.

SUPPLEMENTARY MATERIAL ONLINE

Supplementary materials and methods YES

Supplementary figure legends NO, because legends are embedded with the figures in a single Word file

Figure S1. Schematic showing the key steps in the SILAC proteomic approach used

Figure S2. Testing antibody specificity by immunostaining of FFPE-cells

Figure S3. Testing antibody specificity by Western blotting of cell-lysates

Figure S4. Gene expression analysis of DOCK4 expression and time to bone metastasis

Figure S5. Univariate associations of distant recurrence outcomes with biomarker expression for DOCK4 low and DOCK4 high

Table S1. Proteomic results for up-regulated proteins within the SILAC comparison of parental (PCC) and bone-homing (BM1) MDA-MB-231 cells

REFERENCES

1. Macedo F, Ladeira K, Pinho F, Saraiva N, Bonito N, Pinto L, et al. Bone Metastases: An Overview. *Oncol Rev.* 2017;11(1):321. doi:10.4081/oncol.2017.321.
2. Singh T, Kaur V, Kumar M, et al. The critical role of bisphosphonates to target bone cancer metastasis: an overview. *J Drug Target* 2015; 23: 1-15.
3. Casas A, Llombart A, Martin M. Denosumab for the treatment of bone metastases in advanced breast cancer. *Breast* 2013; 22: 585-592.
4. Coleman RE, Marshall H, Cameron D, et al. Breast-cancer adjuvant therapy with zoledronic acid. *N Engl J Med* 2011; 365: 1396-1405.
5. Early Breast Cancer Trialists' Collaborative. Adjuvant bisphosphonate treatment in early breast cancer: meta-analyses of individual patient data from randomised trials. *Lancet* 2015; 386: 1353-1361.
6. Rathbone EJ, Brown JE, Marshall HC, et al. Osteonecrosis of the jaw and oral health-related quality of life after adjuvant zoledronic acid: an adjuvant zoledronic acid to reduce recurrence trial subprotocol (BIG01/04). *J Clin Oncol* 2013; 31: 2685-2691.
7. Santana-Codina N, Carretero R, Sanz-Pamplona R, et al. A transcriptome-proteome integrated network identifies endoplasmic reticulum thiol oxidoreductase (ERp57) as a hub that mediates bone metastasis. *MolCell Proteomics* 2013; 12: 2111-2125.

8. Lam SW, Jimenez CR, Boven E. Breast cancer classification by proteomic technologies: current state of knowledge. *Cancer Treat Rev* 2014; 40: 129-138.
9. Dumont B, Castronovo V, Peulen O, *et al.* Differential proteomic analysis of a human breast tumor and its matched bone metastasis identifies cell membrane and extracellular proteins associated with bone metastasis. *J Proteome Res* 2012; 11: 2247-2260.
10. Westbrook JA, Cairns DA, Peng J, *et al.* CAPG and GIPC1: Breast Cancer Biomarkers for Bone Metastasis Development and Treatment. *J Natl Cancer Inst* 2016; 108.
11. Kang Y, Siegel PM, Shu W, *et al.* A multigenic program mediating breast cancer metastasis to bone. *Cancer Cell* 2003; 3: 537-549.
12. Ong SE, Blagoev B, Kratchmarova I, *et al.* Stable isotope labeling by amino acids in cell culture, SILAC, as a simple and accurate approach to expression proteomics. *Mol Cell Proteomics* 2002; 1: 376-386.
13. Ong SE, Mann M. A practical recipe for stable isotope labeling by amino acids in cell culture (SILAC). *Nat Protoc* 2006; 1: 2650-2660.
14. Abraham S, Scarcia M, Bagshaw RD, *et al.* A Rac/Cdc42 exchange factor complex promotes formation of lateral filopodia and blood vessel lumen morphogenesis. *Nat Commun* 2015; 6: 7286.
15. Simpkins SA, Hanby AM, Holliday DL, *et al.* Clinical and functional significance of loss of caveolin-1 expression in breast cancer-associated fibroblasts. *J Pathol* 2012; 227: 490-498.
16. Hornigold N, Craven RA, Keen JN, *et al.* Upregulation of Hic-5 in glomerulosclerosis and its regulation of mesangial cell apoptosis. *Kidney Int* 2010; 77: 329-338.
17. McShane LM, Altman DG, Sauerbrei W, *et al.* REporting recommendations for tumor MARKer prognostic studies (REMARK). *Nat Clin Pract Urol* 2005; 2: 416-422.
18. Kawada K, Upadhyay G, Ferandon S, *et al.* Cell migration is regulated by platelet-derived growth factor receptor endocytosis. *Mol Cell Biol* 2009; 29: 4508-4518.
19. Hiramoto-Yamaki N, Takeuchi S, Ueda S, *et al.* Ephexin4 and EphA2 mediate cell migration through a RhoG-dependent mechanism. *J Cell Biol* 2010; 190: 461-477.
20. Kobayashi M, Harada K, Negishi M, *et al.* Dock4 forms a complex with SH3YL1 and regulates cancer cell migration. *Cell Signal* 2014; 26: 1082-1088.
21. Yu JR, Tai Y, Jin Y, *et al.* TGF-beta/Smad signaling through DOCK4 facilitates lung adenocarcinoma metastasis. *Genes Dev* 2015; 29: 250-261.
22. Jalali A, Ebrahimi H, Ohadi M, *et al.* New variations in the promoter regions of human DOCK4 and RAP1A genes, and coding regions of RAP1A in sporadic breast tumors. *Avicenna J Med Biotechnol* 2009; 1: 117-123.

23. Cailleau R, Olive M, Cruciger QV. Long-term human breast carcinoma cell lines of metastatic origin: preliminary characterization. *In Vitro* 1978; 14: 911-915.
24. Brugnera E, Haney L, Grimsley C, *et al.* Unconventional Rac-GEF activity is mediated through the Dock180-ELMO complex. *Nat Cell Biol* 2002; 4: 574-582.
25. Cote JF, Vuori K. Identification of an evolutionarily conserved superfamily of DOCK180-related proteins with guanine nucleotide exchange activity. *J Cell Sci* 2002; 115: 4901-4913.
26. Lee NY, Ray B, How T, *et al.* Endoglin promotes transforming growth factor beta-mediated Smad 1/5/8 signaling and inhibits endothelial cell migration through its association with GIPC. *J Biol Chem* 2008; 283: 32527-32533.
27. Valastyan S, Weinberg RA. Tumor metastasis: molecular insights and evolving paradigms. *Cell* 2011; 147: 275-292.
28. Coleman R, Hall A, Albanell J, *et al.* Effect of MAF amplification on treatment outcomes with adjuvant zoledronic acid in early breast cancer: a secondary analysis of the international, open-label, randomised, controlled, phase 3 AZURE (BIG 01/04) trial. *Lancet Oncol* 2017; 18: 1543-1552.
29. Pavlovic M, Arnal-Estape A, Rojo F, *et al.* Enhanced MAF oncogene expression and breast cancer bone metastasis. *J Natl Cancer Inst* 2015; 107: djv256.
30. Gomis RR, inventor. Method for the diagnosis, prognosis and treatment of metastatic cancer. 2018. European Patent Office, EP3272880, <https://data.epo.org/publication-server/rest/v1.0/publication-dates/20180411/patents/EP3272880NWA3/document.pdf>
31. Kang Y. Dissecting tumor-stromal interactions in breast cancer bone metastasis. *Endocrinol Metab (Seoul)* 2016; 31: 206-212.
- *32. Wang Y, Klijn JG, Zhang Y, *et al.* Gene-expression profiles to predict distant metastasis of lymph-node-negative primary breast cancer. *Lancet* 2005; **365**: 671-679.
- *33. Schroeder M, Haibe-Kains B, Culhane A, *et al.* breastCancerVDX. R package version 1.16.0.2011. DOI: [10.18129/B9.bioc.breastCancerVDX](https://doi.org/10.18129/B9.bioc.breastCancerVDX).
- *34. Hothorn T, Hornik K, Zeileis A. Unbiased Recursive Partitioning: A conditional inference framework. *J Computat Graphical Statistics* 2006; **3**: 651-674.

*35. Therneau TM, Grambsch PM. Modeling Survival Data: Extending the Cox Model. Springer-Verlag. New York 2000.

*Cited only in supplementary material.

Legends to Figures

Figure 1. Expression of DOCK4 in BM and PCC cell lines and the effects of knockdown

by shRNA. (A–C) DOCK4 was confirmed to be of higher expression in BM1 cell type by

Western blotting (2.0-fold induction, $p = 0.027$), and 81% and 88% knock-down of DOCK4

protein expression was achieved in PCC and BM1 cells, respectively. Representative whole-gel

lane images are shown. wt = wild type (no vector); cv = control vector; shR = shRNA. (E,F)

Invasion / migration assay. The ability of PCC and BM1 cells to move through Matrigel™

matrix was assessed using a scratch-wound assay. Significant differences between the control

vector and DOCK4 knock-down cells were seen at the 6 h and 12 h time points.

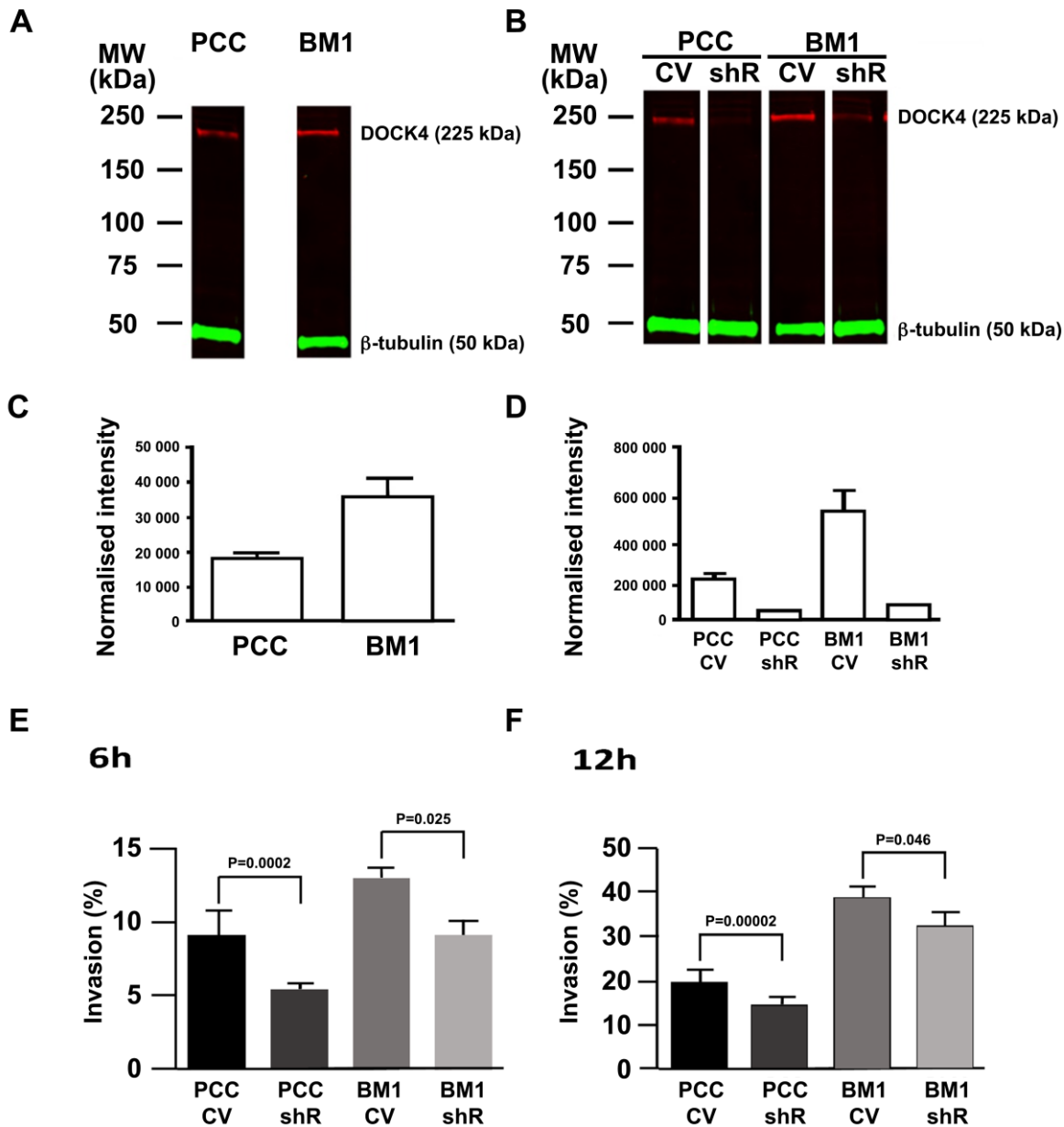


Figure 2. Examples of immunostaining for DOCK 4 in TMA cores from patients in the AZURE study.

Examples of protein expression intensity scores for DOCK4 protein as assessed using immunohistochemistry and visualised at magnification of 20X. The scoring was based on the intensity of staining in the cytoplasmic compartment of the tumour cells only. Scale bar = 200 μ m.

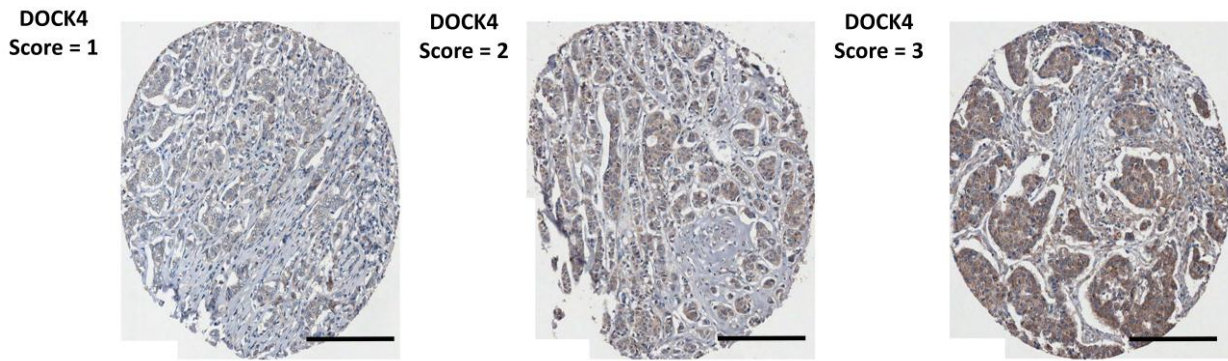


Figure 3. Association of DOCK4 with DFS events. Kaplan-Meier estimates of the relationship between expression of DOCK4 and (A) non-skeletal DFS events (B) skeletal DFS events (where other distant events may have been recorded at the same time); (C) solely skeletal DFS events (where no other distant event was recorded at the same time) and (D) any DFS events (where first event was recorded at any distant site) in patients in the control arm of the AZURE trial (n = 434). P-value is from the logrank test for testing equality of survival functions.

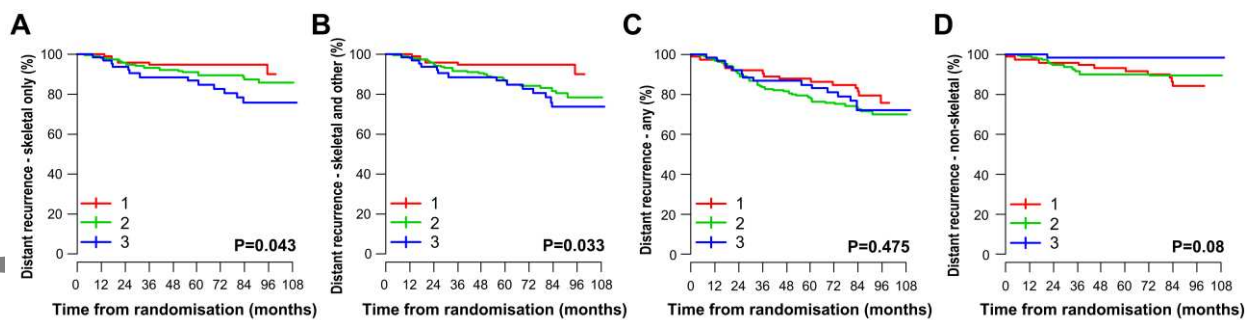


Figure 4. Univariate associations of distant recurrence outcomes with biomarker expression in control and zoledronate arms. (Estimates are from Cox proportional hazards regressions) Kaplan-Meier estimates of the survival function for time to distant recurrence (DR) and overall survival for control and zoledronate arms. Numbers 1 to 3 refer to the DOCK4 staining intensity scores. These were dichotomised, ie DOCK4 low (1 and 2); DOCK4 high (3). Comparisons shown to be significant are also significant in analyses adjusting for the effect of systemic therapy plan, ER status and lymph node involvement. (A,B): Skeletal only; (C,D): skeletal and other; (E,F): Non-skeletal; (G,H): First skeletal irrespective of whether other distant

events have occurred previously (ie bone metastasis-free survival). (I,J): Overall Survival (OS).
P-values refer to the logrank test. For definitions of non-skeletal, skeletal and other and skeletal
only see legend to Table 1.

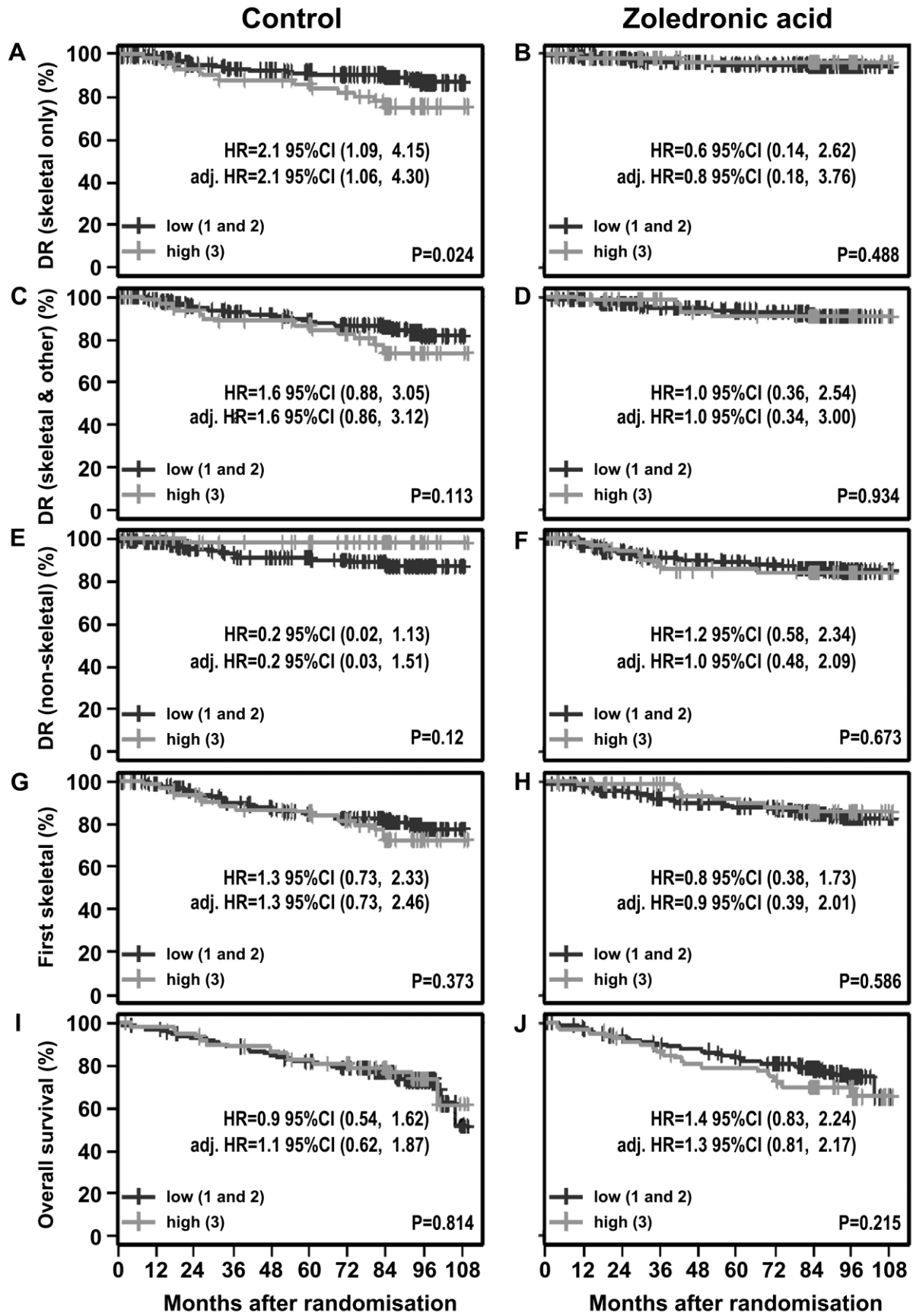


Table 1. Characteristics of the patients whose tissue was assessed on TMAs in this study (as at baseline on the AZURE study) and first disease-free survival (DFS) events. Non-skeletal (first distant recurrence event does not include any skeletal component); Skeletal and other (first distant recurrence event reported includes both skeletal and other sites of metastasis, as well as skeletal only); Skeletal only (first distant recurrence event only skeletal - this group is a subset of those classified as skeletal and other).

Characteristic	DOCK4 dataset		Full AZURE trial population	
	Zoledronate (n=359)	Control (n=330)	Zoledronate (N=1681)	Control (n=1678)
Age (years) Median (range)	50 (26, 75)	51 (32, 79)	51 (20-89)	51 (21, 89)
Axillary lymph nodes - no. (%)				
0	4 (1.2)	4 (1.2)	29 (1.7)	32 (1.9)
1-3	223 (67.6)	223 (67.6)	1041 (61.9)	1032 (61.5)
≥4	103 (31.2)	103 (31.2)	604 (35.9)	608 (36.2)
Tumour stage - no. (%)				
T1	115 (32.0)	116 (35.2)	542 (32.2)	523 (31.2)
T2	196 (54.6)	163 (49.4)	851 (50.6)	867 (51.7)
T3	37 (10.3)	43 (13)	227 (13.5)	228 (13.6)
T4	11 (3.1)	8 (2.4)	58 (3.5)	59 (3.5)
Histological grade - no. (%)				
1	26 (7.2)	23 (7.0)	145 (8.6)	140 (8.3)
2	144 (40.1)	130 (39.4)	731 (43.5)	708 (42.2)
3	187 (52.1)	174 (52.7)	765 (45.5)	787 (46.9)
Not specified		3 (0.9)		
Missing	2 (0.6)			
ER status - no. (%)				
ER positive	255 (77.3)	255 (77.3)	1319 (78.5)	1316 (78.4)
ER negative	80 (22.3)	72 (21.8)	349 (20.8)	355 (21.2)
ER unknown	1 (0.3)	3 (9)	13 (0.8)	7 (0.4)
PR status - no. (%)				
PR positive	126 (35.1)	102 (30.9)	725 (43.1)	698 (41.6)
PR negative	63 (17.5)	73 (22.1)	382 (22.7)	424 (25.3)
PR unknown	169 (47.1)	153 (46.4)	571 (34.0)	548 (32.7)
Missing	1 (0.3)	2 (0.6)		
HER2 status - no. (%)				
HER2 positive	38 (10.6)	48 (12.7)	192 (11.4)	223 (13.3)
HER2 negative	106 (29.5)	84 (26.0)	648 (38.5)	603 (35.9)
HER2 unknown/not measured	209 (58.3)	197 (61.2)	831 (49.5)	843 (50.1)
Missing	6 (1.7)	1 (0.3)		
Menopausal status - no. (%)				
Pre-menopausal	167 (46.5)	151 (45.8)	751 (44.7)	752 (44.8)
≤ 5 years since menopause	53 (14.8)	54 (16.4)	247 (14.7)	244 (14.5)
> 5 years since menopause	112 (31.2)	97 (29.4)	519 (30.9)	522 (31.1)
Menopausal status unknown	27 (7.5)	28 (8.5)	164 (9.8)	160 (9.5)
Planned systemic therapy - no. (%)				
Endocrine therapy alone	24 (6.7)	17 (5.2)	76 (4.5)	74 (4.5)
Chemotherapy alone	79 (22.0)	72 (21.8)	362 (21.5)	360 (21.5)
Endocrine therapy plus chemotherapy	256 (71.3)	241 (73.0)	1243 (73.9)	1243 (74.1)
Type of chemotherapy				
Anthracyclins - no. (%)	328 (91.4)	307 (93.0)	1567 (97.6)	1564 (97.6)
Taxanes - no. (%)	48 (13.4)	41 (12.4)	390 (24.3)	385 (24.0)
Timing of chemotherapy				
Neo-adjuvant	14 (3.3)	11 (3.3)	104 (6.5)	104 (6.5)
Post-operative	345 (96.7)	319 (96.7)	1501 (93.5)	1499 (93.5)
Statin use - no. (%)	19 (5.3)	15 (4.5)	97 (5.8)	101 (6.0)
Type of first disease-free survival event - no. (%)				
Loco-regional recurrence	26 (7.2)	17 (5.2)	79 (4.7)	78 (4.7)
Distant recurrence	68 (18.9)	74 (22.4)	332 (19.8)	341 (20.3)
Distant and loco-regional recurrence	5 (1.4)	3 (0.9)	18 (1.1)	21 (1.3)
Death without prior recurrence	11 (3.1)	13 (3.9)	53 (3.2)	44 (2.6)
First distant recurrence is nonskeletal - no. (%)				
	46 (12.8)	28 (8.5)	194 (11.5)	165 (9.8)

First distant recurrence includes skeletal and other - no. (%)				
	27(7.5)	49 (14.8)	156 (9.3)	197 (11.7)
First distant recurrence is skeletal only - no. (%)				
	16 (4.5)	38 (11.5)	97 (5.8)	140 (8.3)

Table 2. Cox regression analysis for associations between protein IHC and distant recurrence events by AZURE trial arm.

Reference category in each multivariable model is DOCK4 low (1 or 2) Comparisons shown to be significant are also significant in analyses adjusting for the effect of systemic therapy plan, ER status, HER2 status and lymph node involvement. Time to first bone metastasis is defined as time to the first skeletal distant recurrence, irrespective of whether other distant recurrence has occurred earlier (ie bone metastasis-free survival). For definitions of non-skeletal, skeletal plus other and skeletal only, see legend to Table 1. NB: n = number of events and N = number at risk.

		Standard Treatment				Standard Treatment + Zoledronic Acid			
		N (at risk)	n (events)	HR (95% CI)	p-value	N (at risk)	n (events)	HR (95% CI)	p-value
Nonskeletal distant recurrence	Unadj	330	28	0.154 [0.021,1.131]	0.066	359	46	1.162 [0.577,2.342]	0.674
	Adj	329	28	0.201 [0.027,1.506]	0.118	353	46	0.999 [0.478,2.086]	0.997
Distant recurrence including skeletal	Unadj	330	49	1.642 [0.883,3.052]	0.117	359	27	0.96 [0.363,2.535]	0.934
	Adj	329	49	1.634 [0.855,3.121]	0.137	353	26	0.999 [0.336,2.967]	0.998
Skeletal only distant recurrence	Unadj	330	38	2.121 [1.085,4.148]	0.028	359	16	0.595 [0.135,2.619]	0.493
	Adj	329	38	2.133 [1.058,4.304]	0.034	353	16	0.812 [0.176,3.756]	0.79
Bone metastasis at any time	Unadj	330	62	1.302 [0.728,2.328]	0.374	359	49	0.81 [0.38,1.728]	0.586
	Adj	329	62	1.344 [0.734,2.46]	0.338	353	47	0.882 [0.387,2.012]	0.765