



UNIVERSITY OF LEEDS

This is a repository copy of *Topography design in model membranes: Where biology meets physics*.

White Rose Research Online URL for this paper:
<http://eprints.whiterose.ac.uk/139552/>

Version: Accepted Version

Article:

Chand, S, Beales, P orcid.org/0000-0001-9076-9793, Claeysens, F et al. (1 more author) (2019) Topography design in model membranes: Where biology meets physics. *Experimental Biology and Medicine*, 244 (4). pp. 294-303. ISSN 1535-3702

<https://doi.org/10.1177/1535370218809369>

© 2018 by the Society for Experimental Biology and Medicine. This is an author produced version of a paper published in *Experimental Biology and Medicine*. Reprinted by permission of SAGE Publications.

Reuse

Items deposited in White Rose Research Online are protected by copyright, with all rights reserved unless indicated otherwise. They may be downloaded and/or printed for private study, or other acts as permitted by national copyright laws. The publisher or other rights holders may allow further reproduction and re-use of the full text version. This is indicated by the licence information on the White Rose Research Online record for the item.

Takedown

If you consider content in White Rose Research Online to be in breach of UK law, please notify us by emailing eprints@whiterose.ac.uk including the URL of the record and the reason for the withdrawal request.



eprints@whiterose.ac.uk
<https://eprints.whiterose.ac.uk/>

Topography design in model membranes: where biology meets physics

Running title: spatial and curved patterns in artificial lipid membranes

Sarina Chand^{a,c}, Paul Beales^b, Frederik Claeysens^c, Barbara Ciani^{a†}

^aCentre for Membrane Structure and Dynamics, Krebs Institute and Department of Chemistry, University of Sheffield, Sheffield, S3 7HF, UK

^bSchool of Chemistry and Astbury Centre for Structural Molecular Biology, University of Leeds, Leeds, LS2 9JT, UK

^cThe Kroto Research Institute, University of Sheffield, Sheffield, S3 7HQ, UK

[†]Dainton Building, Department of Chemistry, University of Sheffield, Sheffield, S3 7HF, UK; email: b.ciani@sheffield.ac.uk

Abstract

Phospholipid membranes are necessary for the compartmentalisation of chemistries within biological cells and for initiation and propagation of cell signalling. The morphological and chemical complexity of cellular membranes represent a challenge for dissecting the biochemical processes occurring at these interfaces. Therefore, investigations of the biological events occurring at the membrane require suitable models able to reproduce the complexities of this surface. Solid-supported lipid bilayers (SLB) are simplified physical replicas of biological membranes that allow the bottom-up reconstruction of the molecular mechanisms occurring at cellular interfaces. In this brief review we introduce how the properties of SLBs can be tuned to mimic biological membranes, highlighting the engineering approaches for creating spatially resolved patterns of lipid bilayers and supported membranes with curved geometries. Additionally, we present how SLBs have

been employed to reconstitute the biophysical basis of molecular mechanisms involved in intercellular signalling and more recently, membrane trafficking.

Keywords

Solid-supported lipid bilayers, membrane patterning, membrane curvature, synthetic biology, *in vitro* reconstitution.

Impact Statement

Artificial membranes with complex topography aid the understanding of biological processes where membrane geometry plays a key regulatory role. In this review, we highlight how emerging material and engineering technologies have been employed to create minimal models of cell signalling pathways, *in vitro*. These artificial systems allow life scientists to answer ever more challenging questions in regards to mechanisms in cellular biology. *In vitro* reconstitution of biology is an area that draws on the expertise and collaboration between biophysicists, material scientists and biologists and has recently generated a number of high impact results, some of which are also discussed in this review.

Introduction

Phospholipid membranes allow for compartmentalization of chemical signals within a biological cell. They separate the extracellular milieu from the cytoplasmic interior, defining a cell's boundaries and delimit all the organelles within its cytosol. They also protect the genome from the cytosolic environment and attack from nucleases. Biological membranes are dynamic structures that permit bidirectional transport of cargo, cellular communication and signalling. Therefore, they are more than just a diffusion barrier and participate in cellular signalling, serving as scaffolds and surfaces for protein complexes¹.

The phospholipid bilayer has been known as a functional two-dimensional fluid since the 1970s² with the first bilayer structure based on amphiphilic phospholipids presented in 1925³. Today, our understanding of molecular processes at the biological membrane has been built upon studies performed on models of the cell membrane. These include structures such as liposomes, giant unilamellar vesicles, monolayers and polymer-supported lipid bilayers^{4,5}(Figure 1).

The planar lipid bilayers or solid-supported lipid bilayers (SLB) are model systems constructed via self-assembly of lipids on a solid support. They can be engineered to exhibit similar fluid properties of crowded natural cell membranes, displaying lateral diffusion coefficients between $1 \mu\text{m}^2 \text{s}^{-1}$ (similar to cell membranes) or slightly faster diffusion rates up to $3\text{-}4 \mu\text{m}^2 \text{s}^{-1}$, depending on the physical properties of the support interface⁶. The lateral diffusion of lipids in SLBs is also influenced by the liquid-crystalline properties of the bilayer that change with lipid composition⁷ and is confined to the plane of the solid support where the lipid leaflets fluidity is sustained by a ~ 1 nm layer water parting the bilayer from the substrate⁸.

SLBs have been utilized to investigate membrane organization⁹, protein self-assembly¹⁰, membrane remodelling^{11,12} and deduce mechanisms for spatial and temporal initiation of

cell signalling at the plasma membrane¹³⁻¹⁵. The major impact from investigating biochemical processes occurring at the membrane could be in the field of drug development, given that around 50% of drugs target transmembrane proteins¹⁶.

Importantly, SLBs can be designed to be more than just a flat lipid bilayer. Solid support and membrane bilayer morphology can be easily altered to more accurately mimic a system of interest. Specifically, the spatial organization and mechanical deformation of supported membranes can be manipulated by patterning the underlying substrate with modern micro and nanofabrication techniques (Table 1).

In this mini-review, we introduce the technologies to engineer spatially-resolved flat lipid bilayers and SLBs containing patterns of membrane curvature. We discuss how these artificial systems facilitate the study of the biological pathways controlled by the interplay between cellular membranes and membrane-interacting proteins.

Towards building a realistic model of the cell membrane

Cellular membranes exhibit heterogeneity in lipid composition and display a variety of shapes and morphologies, which are necessary for specialization of function. For example, asymmetry in cholesterol lateral composition at the plasma membrane plays a role in the compartmentalisation of protein complexes and in activating and regulating cell signalling via membrane trafficking^{17,18}. The function of membrane-bound organelles is linked to their complex morphologies. An exquisite example is the continuous membrane network of the endoplasmic reticulum (ER), with its closely packed membrane sheets. The ER membrane architecture maximizes the surface areas for protein synthesis, whereas the tubules in the peripheral are used for contacting other membrane organelles¹⁹. Some organelles change morphology progressively to acquire diverse functions, such as endosomes 'maturing' into multivesicular bodies during cargo trafficking to the lysosomes²⁰.

The earliest model system of a cell membrane was the black lipid membrane, developed by Mueller in the 1960s²¹ but it was not very versatile (Figure 1A). Today, liposomes and giant unilamellar vesicles (GUVs) (Figure 1B) offer the possibility to study the role of lipid composition and membrane mechanics in the context of protein-membrane interactions⁴. Generally, GUVs are more appropriate models for studying how a wide range of membrane physical parameters affects their interaction with other molecules. Nonetheless, SLBs offer specific advantages for quantifying kinetic processes at the molecular level since they are amenable to coupling with surface-sensitive analysis techniques, such as surface plasmon resonance (SPR) and quartz microbalance (QCM-D). Low and high-resolution imaging techniques such as atomic force microscopy (AFM), fluorescence recovery after photobleaching (FRAP) and total internal reflection microscopy (TIRF) permit image acquisition of membrane topography, quantification of membrane fluidity and localization of protein assemblies at the supported membrane²².

There is a choice of methods available to produce SLBs, depending on the extent of surface coverage and the type of solid-support. The direct vesicle fusion²³ method is performed in aqueous buffers and involves liposome interaction, deformation and spontaneous rupture into a single lipid bilayer, coating uniformly the solid substrate, usually silica or mica (Figure 1C). It is the most straightforward and commonly used approach to form SLBs, although it is less suitable to form membranes containing a high proportion of cholesterol, which impacts negatively on the efficiency of vesicle rupture²⁴. In the solvent-assisted lipid bilayer method, the bilayer is formed following gradual exchange of a water-miscible organic solvent with an aqueous buffer solution, over lipids deposited onto the solid support²⁵. The method is suitable to form bilayers onto a wide range of surfaces (e.g. silicon dioxide and gold²⁶) since it does not require an interaction between lipid vesicles and the surface. In the Langmuir-Blodgett (LB) technique^{27,28}, a lipid monolayer formed at an air-water interface is transferred to a hydrophilic surface. This

technique can be used to produce asymmetric lipid bilayers, which mimic natural cell membranes more closely and are not accessible with the vesicle fusion method (Figure 1D). Recently, spin coating has also been established as a facile method to deposit membranes onto a variety of solid supports^{29,30}.

A major difference between reconstituted flat lipid bilayers and biological membranes is the lack of the bulk aqueous phase of the cytosol underneath the lipid leaflet, which confers fluidity to cellular membranes. The small hydration layer, spacing the membrane from the solid support, does not accurately mimic the properties of the cellular cytosol. Therefore, in SLBs the solid support and the lipid bilayer are not fully decoupled and the nature of the surface can have major effects on the properties of the membrane. For instance, stable lipid bilayers can form around highly curved substrates, such as 100 nm diameter silica nanoparticles³¹, by means of electrostatic interactions between the lipid vesicles and the silica support. Moreover, supported lipid bilayers can adapt to changes induced by substrate plasticity^{32,33}, a behaviour that can be exploited to control the mechanical properties of the membrane.

In biological membranes, cytoskeletal scaffolds disengage the lipid leaflets from the bulk phase of the cytosol. Synthetic materials that exhibit mechanical properties similar to those of the cytoskeleton, can be sandwiched between the bilayer and the solid-support. For example, polymer brushes³⁴ or generic polymer nanofibers³⁵ can be used to recapitulate the function of actin networks and provide the reconstituted lipid bilayer with fluidity properties close to those observed in biological membranes. These polymer-supported SLBs can also be spatially patterned and incorporate proteins of interest^{36,37} (Figure 1E). Conversely, SLBs have also been used also to reconstitute the assembly of cytoskeletal proteins, such as the polymerization of an actin scaffold on an SLB formed by vesicles containing ponticulin, an initiator of actin self-assembly³⁸.

Engineering of spatially patterned bilayers to investigate cell signalling

SLBs can be engineered as spatially-organized patterns of lipid bilayers with specific compositions. Several methods for spatial patterning of membranes have been developed based on approaches where either the membrane is locally confined by the substrate topography (e.g. microcontact printing)^{39–41} or alternatively, parts of the membrane are removed after lipid bilayer deposition (e.g. photolithographic techniques)^{42–45}. Therefore, solid-supports can be engineered to introduce *ad-hoc* morphological features to study the biological process of interest. An overview of methods for patterning solid-supports is presented in Table 1 and summarized below.

Micro-contact printing is a fairly versatile approach to form patterned membranes. It is based on a form of soft lithography as it utilizes soft elastomers, typically polydimethylsiloxane (PDMS)³⁹. The PDMS surface is patterned and used as a contact stamp to transfer a thin layer of material onto a substrate. Its main limitations include stamp deformation or stretching and compressing of the stamp, introducing unwanted features into the pattern. During transfer, the ink can laterally spread into unwanted regions not replicating the desired pattern⁴⁶. Polymer 'lift-off' techniques are a form of microcontact printing where a thin layer of a sacrificial material (aluminium or a polymer) is patterned onto glass. Once a SLB has formed, the material is etched away removing lipids in the patterned regions^{47–49} (Figure 2A).

Currently, the techniques that can fabricate membrane arrays with the highest resolution are electron beam⁵⁰ and scanning probe lithography⁴², which can reproduce features down to 10 nm in size (Table 1). Scanning probe lithography uses an AFM tip to pattern substrates, meaning that features with size beyond the diffraction limit, which limits the achievable resolution in conventional lithography, are accessible via this technique. Other

types of scanning probe lithography either involve removal of material from the surface of the substrate (thermal scanning probe lithography)⁴³ or use diffusion at the tip of the scanning probe to coat patterns onto substrates, such as alkanethiol arrays on gold substrates (dip-pen lithography)^{44,51}. Patterned bilayers can be formed by removal of lipids from a membrane through the use of UV/ozone photolithography^{52,53} or using atomic force microscopy⁵⁴. Multi-photon lithography exploits the chemical changes occurring in substrates that can simultaneously absorb two or more photons, such as hydrogels, natural polymers and even proteins⁵⁵. The critical size of the features generated with this technique can be as small as 100 nm, since the chemical transformations occur in a region with a volume of few attolitres⁵⁶.

Patterned SLBs provide an advanced platform for the investigation of complex biological processes at the molecular level. For instance, they can be used to study molecular processes occurring during endocytosis⁵⁷, cell-cell interactions⁵⁸ and communication^{59,60}. Lipid membranes can be spatially-organized with micrometre size diffusion barriers and employed to study molecular processes occurring within confined geometries, such as the molecular details of T-cell activation⁶¹. Similarly, patterned arrays of lipid bilayers⁶² can be used as sensor arrays for cell adhesion^{13,63}. Physical barriers for lipid diffusion can be made using masks created from materials that prevent membrane formation (e.g. metals, some polymers). These barriers are usually taller than the average height of a lipid bilayer (~ 4 nm) but recently, it has been shown that graphene⁶⁴ offers the possibility to create diffusion barriers as thin as one-atom.

The role of transmembrane receptor spatial organization in intercellular signalling has been extensively studied using patterned SLBs⁶⁵. At the plasma membrane, internal and external inputs can alter the spatial organization of cell surface receptors. For instance, intercellular signalling requires close contact between transmembrane receptors to allow direct communication between neighbouring cells. Reproducing *in vitro* an intercellular

junction is a complex task but a combination of solid-state nanolithography and supported lipid bilayer techniques can reveal the interplay between spatial organization and transmembrane receptor activity⁶⁶. For example, Green et al.⁶⁷ used electron beam lithography to create physical barriers to lipid bilayer lateral mobility creating membrane corrals containing the tyrosine kinase receptor Ephrin A1 (EphA1). This system was used to guide breast cancer cells to the EphA1-patterned membranes via the interaction with the cognate receptor Ephrin A2 (EphA2), thereby creating a semi-synthetic junction. This spatial setup of ephrin receptors revealed the relevant molecules involved in the endocytosis of EphA2, an important step in the regulation of the EphA2 receptor signalling pathway⁶⁷.

Similar experimental approaches have been applied to the investigation of events involved in the mechanical regulation of cell surface proteins. For instance, patterned SLBs have been employed to study the relationship between the organization of Epidermal Growth Factor Receptor (EGFR) and its phosphorylation levels⁶⁸ and for the understanding of Ras signalling at a single-molecule level⁶⁹.

Engineering curved membranes to understand the mechanisms of membrane remodelling

Membrane geometry and cellular signalling are intimately connected⁷⁰, particularly in biological processes where macromolecular assembly at the membrane is regulated by curvature^{1,71,72}. Membrane shape and lipid composition are features of membrane organelles, which are not only evolutionarily conserved but are also finely controlled to maintain spatial segregation of molecules during membrane trafficking^{73,74}. Interestingly, over a specific threshold ($\sim 0.8 \mu\text{m}^{-1}$), curvature appears to regulate the spatial organization of lipid phases including cholesterol⁷⁵, and also the segregation of lipids such

as hexadecanoic acid⁷⁶ and cardiolipin⁷⁷. Importantly, local membrane curvature also controls the segregation of curvature-sensing proteins⁷⁸(Figure 2B). For instance, lipidated proteins appear to be selectively recruited by regions of specific membrane curvature⁷⁹. The correlation between substrate curvature and lipid organization underlines the feedback mechanisms that regulate the interaction between the membrane and protein assemblies active at the membrane⁸⁰. Therefore, methods to introduce regions of curvature in model membranes are highly desirable to study biological mechanisms where lipid sorting and membrane deformation are crucial mechanistic steps in recruiting protein complexes to membranes⁸¹, such as membrane trafficking.

Curved supported membranes are formed via direct fusion of lipid vesicles onto the pre-patterned solid-support. Localized regions of curvatures can be introduced in lipid bilayers by means of grooves, edges or other non-flat features at the surface of the solid-support. For example, patterns of curvature in SLBs can be produced by manufacturing, with a focussed-ion beam, cylindrical concavities on a chromium-coated coverslip onto which the lipid bilayers are assembled⁸². Alternatively, nanopits⁸³ and nanoparticles⁸⁴ can be used to guide the formation of regions of local curvature in lipid bilayers. It is worth noting that there is a physical limit to the curvature achievable for a phospholipid membrane on a solid support. This was exemplified by the study of Roiter et al.⁸⁵ which explored the behaviour of membranes deposited on surfaces decorated with nanoparticles. They observed that lipid bilayers form continuously on silica nanoparticles smaller than 1.2 nm or larger than 22 nm, whilst pore formation in the membrane around the particle was likely within this size range.

Non-flat membranes facilitate the investigation of processes in which an asymmetric segregation of lipids occurs laterally or between the leaflets of the membrane at very high curvatures (e.g. tens of nm)⁸⁶. Coupling between lipid structures and curvature preference is a consequence of the interactions between different lipid shapes, which prefer to

arrange as locally curved bilayers^{75,87}. Lipid sorting can be a key signal to drive transmembrane protein clustering⁸⁸ and cell signalling^{89,90}. For instance, lysophosphatidic acid displays an inverted cone shape that confers its tendency to populate regions of membranes with positive curvature^{87,91,92} (Figure 2C).

Complex membrane topographies containing curves and ridges⁹³ can enable the investigation of how protein complexes remodel phospholipid membranes. Membrane remodelling proteins (and assemblies thereof) display curved structures, which are used for sensing curvature and for inducing further membrane bending^{1,81,94}. Special types of SLBs have been recently developed to specifically follow membrane remodelling reactions. The SUPported bilayers with Excess membrane Reservoir (SUPER)^{95,96} are supported bilayers, assembled on micron-scale silica beads in a manner that results in generating a loosely fitted membrane on the solid support (Figure 2D). The excess membrane allows for membrane remodelling processes to occur in the presence of the solid support and be monitored by fluorescence and electron microscopy. These supported membranes have been successfully used to reveal the physical basis of membrane remodelling promoted by protein crowding⁹⁷ or performed by endocytic^{98–101} and autophagic proteins¹⁰². Similarly, the supported membrane tubes (SMrT)¹⁰³ are synthetic membranes mimicking membrane tethers pulled by proteins^{104,105} that can be used to study the impact of local curvature on protein-membrane interactions¹⁰¹.

A unique membrane remodelling protein complex has recently received attention in the membrane biophysics community, the Endosomal Sorting Complex Required for Transport (ESCRT). ESCRT function is vital for key cellular processes such as multivesicular body biogenesis (MVB), cytokinesis, neuron pruning, plasma and nuclear membrane repair and viral budding^{106,107} (Figure 3A). In all these processes, the topology of membrane deformation by ESCRT is the same: the budding occurs away from the cytosol¹⁰⁸, in contrast, for example, to bud formation by dynamin in endocytosis^{101,109}.

Given its unique activity, the biophysics and biochemistry of budding and scission reactions by the ESCRT complex have been the focus of intense investigations. The assembly of ESCRT proteins into a functional complex have been reconstituted with GUVs^{110,111} and onto SLBs to dissect the biophysical basis of membrane remodelling in the context of multivesicular body formation. The main scission machinery of ESCRT, namely ESCRT-III, has been observed to assemble into concentric circle-like structures on lipid bilayers^{112,113} (Figure 3B). These studies suggested a potential mechanism for membrane deformation that involve flat 'spirals' of ESCRT-III acting like springs. ESCRT-III spirals undertake lateral compression on the membrane and incorporate elastic energy, which leads to membrane deformation upon energy release (Figure 3C)¹¹³. In another study, SLBs were used to decipher how the growth of ESCRT-III circular structures is self-regulated and how ESCRT-mediated membrane remodelling is coupled to ATP hydrolysis¹¹⁴.

ESCRT proteins assemble and stabilize the neck of a budding membrane; therefore, membrane curvature plays a role in protein recruitment and assembly at these locations¹⁰⁶. Lee et al.⁸² created a SLB with features resembling membrane bud necks by assembling a lipid bilayer on a substrate with 100 nm deep invaginations, presenting regions of negative curvature (Figure 3D). TIRF microscopy was used to monitor the assembly of the human ESCRT-III complex at the membrane, which revealed clustering of the proteins specifically at the invaginations in the membrane, demonstrating ESCRT activity at membrane bud necks⁸² (Figure 3E).

Perspective and Conclusions

We have presented a brief overview of the solid supported lipid bilayer technology and reviewed the fabrication of spatial and curved patterns in the context of the *in vitro* reconstitutions of biological processes at the membrane.

Flat synthetic membranes are a powerful tool to investigate how the biophysics of lipid-lipid interactions contributes to the assembly of complex biological structures^{115–117}. Advances in the engineering of structural features in solid supports is allowing the generation of ever more complex spatial or curvature patterned bilayers, thus creating more realistic mimics of cellular membranes. SLBs with rough surfaces facilitate the systematic dissection of the interplay between curvature and lipid sorting and crucially, how these physical properties are coupled and controlled in a complex biological process. Lipid phases can be coupled with nanometre-scale curvature patterns¹¹⁸, providing a strategy for organizing a controlled segregation of biomolecules and lipids.

A yet unmet challenge in the SLB field is the *in vitro* reconstruction of more complex biological membranes, such as the nuclear envelope. The nuclear envelope is a double membrane¹¹⁹ in which transmembrane proteins couple the inner membrane to chromatin and the outer membrane relay signals from the cytoskeleton¹²⁰. Such an *in vitro* model would allow the study of the molecular basis of epigenetic mechanisms and nuclear envelope membrane repair in physiological and diseased contexts¹²¹. Whilst SLBs comprised of multiple bilayers have been recently developed^{48,122}, we are still far from being able to design a fit-for-purpose model of this structure. Therefore, it appears that the field is ripe for moving towards increasing complexity with the destination of yet more complex models allowing us to interrogate biological mechanisms and/or reconstruct cell biology from the bottom-up.

Author contributions

All authors contributed equally to the writing and editing of this manuscript.

Funding

BC and FC thanks the EPSRC for a studentship to Sarina Chand under the DTA scheme (EP/L505055/1). BC and PB thanks the EPSRC (grants EP/M027821/1 and EP/M027929/1) for funding.

Declaration of Conflicting Interests

The authors declared no potential conflicts of interest with respect to the research, authorship, and/or publication of this article.

References

1. Beales PA, Ciani B, Cleasby AJ. Nature's lessons in design: Nanomachines to scaffold, remodel and shape membrane compartments. *Phys Chem Chem Phys* 2015; **17**: 15489–15507.
2. Singer SJ, Nicolson GL. The Fluid Mosaic Model of the Structure of Cell Membranes. *Science* 1972; **175**: 720–731.
3. Gorter E, Grendel F. on Bimolecular Layers of Lipoids on the Chromocytes of the Blood. *J Exp Med* 1925; **41**: 439–443.
4. Lagny TJ, Bassereau P. Bioinspired membrane-based systems for a physical approach of cell organization and dynamics: Usefulness and limitations. *Interface Focus* 2015; **5**: 20150038.

5. Loose M, Schwille P. Biomimetic membrane systems to study cellular organization. *J Struct Biol* 2009; **168**: 143–151.
6. Groves JT, Ulman N, Boxer SG. Micropatterning fluid lipid bilayers on solid supports. *Science* 1997; **275**: 651–653.
7. Chapman D. Phase transitions and fluidity characteristics of lipids and cell membranes. *Q Rev Biophys* 1975; **8**: 185–235.
8. Zwang TJ, Fletcher WR, Lane TJ, Johal MS. Quantification of the layer of hydration of a supported lipid bilayer. *Langmuir* 2010; **26**: 4598–4601.
9. Morigaki K, Tanimoto Y. Evolution and development of model membranes for physicochemical and functional studies of the membrane lateral heterogeneity. *Biochim Biophys Acta* 2018; **1860**: 2012–2017.
10. Yip CM, Darabie AA, McLaurin JA. A β 42-peptide assembly on lipid bilayers. *J Mol Biol* 2002; **318**: 97–107.
11. Stachowiak JC, Schmid EM, Ryan CJ, Ann HS, Sasaki DY, Sherman MB, Geissler PL, Fletcher DA, Hayden CC. Membrane bending by protein crowding. *Nat Cell Biol* 2012; **14**: 944–949.
12. Marklew CJ, Booth A, Beales PA, Ciani B. Membrane remodelling by a lipidated endosomal sorting complex required for transport-III chimera, *in vitro*. *Interface Focus* 2018; **8**: 20180035.
13. Groves JT, And LKM, Bertozzi CR, Mahal L, Bertozzi CR, And LKM, Bertozzi CR, Mahal L, Bertozzi CR, And LKM, Bertozzi CR. Control of cell adhesion and growth with micropatterned supported lipid membranes. *Langmuir* 2001; **17**: 5129–5133.
14. DeMond AL, Mossman KD, Starr T, Dustin ML, Groves JT. T cell receptor microcluster transport through molecular mazes reveals mechanism of translocation.

Biophys J 2008; **94**: 3286–3292.

15. Mossman KD, Campi G, Groves JT, Dustin ML. Immunology: Altered TCR signaling from geometrically repatterned immunological synapses. *Science* 2005; **310**: 1191–1193.
16. Yin H, Flynn AD. Drugging Membrane Protein Interactions. *Annu Rev Biomed Eng* 2016; **18**: 51–76.
17. Lingwood D, Simons K. Lipid rafts as a membrane-organizing principle. *Science* 2010; **327**: 46–50.
18. Ewers H, Helenius A. Lipid-mediated endocytosis. *Cold Spring Harb Perspect Biol* 2011; **3**: 1–14.
19. Zhang H, Hu J. Shaping the Endoplasmic Reticulum into a Social Network. *Trends Cell Biol* 2016; **26**: 934–943.
20. Woodman PG, Futter CE. Multivesicular bodies: co-ordinated progression to maturity. *Curr Opin Cell Biol* 2008; **20**: 408–414.
21. Mueller P, Rudin DO, Ti Tien H, Wescott WC. Reconstitution of cell membrane structure in vitro and its transformation into an excitable system. *Nature* 1962; **194**: 979–980.
22. Schwille P, Diez S. Synthetic biology of minimal systems. *Crit Rev Biochem Mol Biol* 2009; **44**: 223–242.
23. Kalb E, Frey S, Tamm LK. Formation of supported planar bilayers by fusion of vesicles to supported phospholipid monolayers. *BBA - Biomembr* 1992; **1103**: 307–316.
24. Hardy GJ, Nayak R, Zauscher S. Model cell membranes: Techniques to form

- complex biomimetic supported lipid bilayers via vesicle fusion. *Curr Opin Colloid Interface Sci* 2013; **18**: 448–458.
25. Tabaei SR, Jackman JA, Kim SO, Zhdanov VP, Cho NJ. Solvent-Assisted Lipid Self-Assembly at Hydrophilic Surfaces: Factors Influencing the Formation of Supported Membranes. *Langmuir* 2015; **31**: 3125–3134.
 26. Tabaei SR, Choi JH, Haw Zan G, Zhdanov VP, Cho NJ. Solvent-assisted lipid bilayer formation on silicon dioxide and gold. *Langmuir* 2014; **30**: 10363–10373.
 27. Tamm LK, McConnell HM. Supported phospholipid bilayers. *Biophys J* 1985; **47**: 105–113.
 28. Blodgett KB. Films Built by Depositing Successive Monomolecular Layers on a Solid Surface. *J Am Chem Soc* 1935; **57**: 1007–1022.
 29. Simonsen AC, Bagatolli LA. Structure of Spin-Coated Lipid Films and Domain Formation in Supported Membranes Formed by Hydration. Epub ahead of print 2004. DOI: 10.1021/la048683.
 30. Boye TL, Jeppesen JC, Maeda K, Pezeshkian W, Solovyeva V, Nylandsted J, Simonsen AC. Annexins induce curvature on free-edge membranes displaying distinct morphologies. *Sci Rep* 2018; **8**: 10309.
 31. Mornet S, Lambert O, Duguet E, Brisson A. The formation of supported lipid bilayers on silica nanoparticles revealed by cryoelectron microscopy. *Nano Lett* 2005; **5**: 281–285.
 32. Stubbington L, Arroyo M, Staykova M. Sticking and sliding of lipid bilayers on deformable substrates. *Soft Matter* 2017; **13**: 181–186.
 33. L. Stubbington, Arroyo M, Staykova M. Stress relaxation in lipid bilayers on deformable substrates, stick or slip. *Soft Matter* 2016; **00**: 1–6.

34. Blakeston AC, Alswieleh AM, Heath GR, Roth JS, Bao P, Cheng N, Armes SP, Leggett GJ, Bushby RJ, Evans SD. New poly(amino acid methacrylate) brush supports the formation of well-defined lipid membranes. *Langmuir* 2015; **31**: 3668–3677.
35. Yi F, Xu J, Smith AM, Parikh AN, Lavan DA. Nanofiber-supported phospholipid bilayers. *Soft Matter* 2009; **5**: 5037–5041.
36. Johnson A, Madsen J, Chapman P, Alswieleh A, Al-Jaf O, Bao P, Hurley CR, Cartron ML, Evans SD, Hobbs JK, Hunter CN, Armes SP, Leggett GJ. Micrometre and nanometre scale patterning of binary polymer brushes, supported lipid bilayers and proteins. *Chem Sci* 2017; **8**: 4517–4526.
37. Xia S, Cartron M, Morby J, Bryant DA, Hunter CN, Leggett GJ. Fabrication of Nanometer- and Micrometer-Scale Protein Structures by Site-Specific Immobilization of Histidine-Tagged Proteins to Aminosiloxane Films with Photoremovable Protein-Resistant Protecting Groups. *Langmuir* 2016; **32**: 1818–1827.
38. Johnson B, Colyer J, Bushby RJ, Evans SD. Self-Assembly of Actin Scaffolds at Ponticulin-Containing Supported Phospholipid Bilayers. *Biophys J* 2006; **90**: L21–L23.
39. Wilbur JL, Kim E, Xia Y, Whitesides GM. Lithographic molding: A convenient route to structures with sub-micrometer dimensions. *Adv Mater* 1995; **7**: 649–652.
40. Wilbur James L, Kumar A, Biebuyck HA, Kim E, Whitesides GM. Microcontact printing of monolayers : applications in microfabrication. *Nanotechnology* 1996; **7**: 452–457.
41. Lenz P, Ajo-Franklin CM, Boxer SG. Patterned supported lipid bilayers and monolayers on poly(dimethylsiloxane). *Langmuir* 2004; **20**: 11092–11099.

42. Krämer S, Fuierer RR, Gorman CB. Scanning probe lithography using self-assembled monolayers. *Chem Rev* 2003; **103**: 4367–4418.
43. Hua Y, Saxena S, Lee JC, King WP, Henderson CL. Direct three-dimensional nanoscale thermal lithography at high speeds using heated atomic-force microscope cantilevers. In: Lercel MJ (ed). International Society for Optics and Photonics, p. 65171L.
44. Salaita K, Wang Y, Mirkin CA. Applications of dip-pen nanolithography. *Nat Nanotechnol* 2007; **2**: 145–155.
45. Callis PR. Two-photon-induced fluorescence. *Annu Rev Phys Chem* 1997; **48**: 271–297.
46. Perl A, Reinhoudt DN, Huskens J. Microcontact printing: limitations and achievements. *Adv Mater* 2009; **21**: 2257–2268.
47. Zhu Y, Moran-Mirabal J. Micropatterning of Phase-Segregated Supported Lipid Bilayers and Binary Lipid Phases through Polymer Stencil Lift-Off. *Langmuir* 2016; **34**: 11021–11028.
48. Zhu Y, Negmi A, Moran-Mirabal J. Multi-stacked supported lipid bilayer micropatterning through polymer stencil lift-off. *Membranes (Basel)* 2015; **5**: 385–398.
49. Jackson BL, Groves JT. Hybrid protein-lipid patterns from aluminum templates. *Langmuir* 2007; **23**: 2052–2057.
50. Chen Y. Nanofabrication by electron beam lithography and its applications: A review q. *Microelectron Eng* 2015; **135**: 57–72.
51. Ginger DS, Zhang H, Mirkin CA. The Evolution of Dip-Pen Nanolithography. *Angew Chemie - Int Ed* 2004; **43**: 30–45.

52. Yu CH, Parikh AN, Groves JT. Direct patterning of membrane-derivatized colloids using in-situ UV-ozone photolithography. *Adv Mater* 2005; **17**: 1477–1480.
53. Shi J, Chen J, Cremer PS. Sub-100 nm patterning of supported bilayers by nanoshaving lithography. *J Am Chem Soc* 2008; **130**: 2718–2719.
54. Jackson BL, Groves JT. Scanning Probe Lithography on Fluid Lipid Membranes Supported Bilayer Deposition. *J Am Chem Soc* 2004; **126**: 13878–13879.
55. Selimis A, Mironov V, Farsari M. Direct laser writing: Principles and materials for scaffold 3D printing. *Microelectron Eng* 2014; **132**: 83–89.
56. Li L, Fourkas JT. Multiphoton polymerization. *Mater Today* 2007; **10**: 30–37.
57. Zhao W, Hanson L, Lou HY, Akamatsu M, Chowdary PD, Santoro F, Marks JR, Grassart A, Drubin DG, Cui Y, Cui B. Nanoscale manipulation of membrane curvature for probing endocytosis in live cells. *Nat Nanotechnol* 2017; **12**: 750–756.
58. Moulick RG, Panaitov G, Choi SE, Mayer D, Offenhäusser A. Patterning artificial lipid bilayer on nanostructured surfaces. *Int J Nanomedicine* 2018; **13**: 55–58.
59. McConnell HM, Watts TH, Weis RM, Brian AA. Supported planar membranes in studies of cell-cell recognition in the immune system. *BBA - Rev Biomembr* 1986; **864**: 95–106.
60. Jung H, Robison AD, Cremer PS. Detecting protein-ligand binding on supported bilayers by local pH modulation. *J Am Chem Soc* 2009; **131**: 1006–1014.
61. Watts TH, Gaub HE, Mcconnell HM. T-cell-mediated association of peptide antigen and major histocompatibility complex protein detected by energy transfer in an evanescent wave-field. *Nature* 1986; **320**: 179–181.
62. Cremer PS, Yang T. Creating spatially addressed arrays of planar supported fluid

- phospholipid membranes. *Journal of the American Chemical Society* 1999; **121**: 8130–8131.
63. Biswas KH, Hartman KL, Zaidel-Bar R, Groves JT. Sustained α -catenin Activation at E-cadherin Junctions in the Absence of Mechanical Force. *Biophys J* 2016; **111**: 1044–1052.
64. Li W, Chung JK, Lee YK, Groves JT. Graphene-Templated Supported Lipid Bilayer Nanochannels. *Nano Lett* 2016; **16**: 5022–5026.
65. Manz BN, Groves JT. Spatial organization and signal transduction at intercellular junctions. *Nat Rev Mol Cell Biol* 2010; **11**: 342–352.
66. Nair PM, Salaita K, Petit RS, Groves JT. Using patterned supported lipid membranes to investigate the role of receptor organization in intercellular signaling. *Nat Protoc* 2011; **6**: 523–539.
67. Greene AC, Lord SJ, Tian A, Rhodes C, Kai H, Groves JT. Spatial organization of epha2 at the cell-cell interface modulates trans-endocytosis of ephrina1. *Biophys J* 2014; **106**: 2196–2205.
68. Stabley D, Retterer S, Marshall S, Salaita K. Manipulating the lateral diffusion of surface-anchored EGF demonstrates that receptor clustering modulates phosphorylation levels. *Integr Biol (United Kingdom)* 2013; **5**: 659–668.
69. Lee YK, Low-Nam ST, Chung JK, Hansen SD, Lam HYM, Alvarez S, Groves JT. Mechanism of SOS PR-domain autoinhibition revealed by single-molecule assays on native protein from lysate. *Nat Commun* 2017; **8**: 15061.
70. Schmick M, Bastiaens PIH. The interdependence of membrane shape and cellular signal processing. *Cell* 2014; **156**: 1132–1138.
71. Reynwar BJ, Illya G, Harmandaris VA, Müller MM, Kremer K, Deserno M.

- Aggregation and vesiculation of membrane proteins by curvature-mediated interactions. *Nature* 2007; **447**: 461–464.
72. Arumugam S, Bassereau P. Membrane nanodomains: contribution of curvature and interaction with proteins and cytoskeleton. *Essays Biochem* 2015; **57**: 109–119.
73. Shibata Y, Hu J, Kozlov MM, Rapoport TA. Mechanisms Shaping the Membranes of Cellular Organelles. *Annu Rev Cell Dev Biol* 2009; **25**: 329–354.
74. Heald R, Cohen-Fix O. Morphology and function of membrane-bound organelles. *Curr Opin Cell Biol* 2014; **26**: 79–86.
75. Parthasarathy R, Yu C, Groves JT. Curvature-Modulated Phase Separation in Lipid Bilayer Membranes. *Langmuir* 2006; **22**: 5095–5099.
76. Cheney PP, Weisgerber AW, Feuerbach AM, Knowles MK. Single lipid molecule dynamics on supported lipid bilayers with membrane curvature. *Membranes (Basel)* 2017; **7**: 15.
77. Boyd KJ, Alder NN, May ER. Buckling under Pressure: Curvature-Based Lipid Segregation and Stability Modulation in Cardiolipin-Containing Bilayers. *Langmuir* 2017; **33**: 6937–6946.
78. Hsieh WT, Hsu CJ, Capraro BR, Wu T, Chen CM, Yang S, Baumgart T. Curvature sorting of peripheral proteins on solid-supported wavy membranes. *Langmuir* 2012; **28**: 12838–12843.
79. Larsen JB, Kennard C, Pedersen SL, Jensen KJ, Uline MJ, Hatzakis NS, Stamou D. Membrane Curvature and Lipid Composition Synergize To Regulate N-Ras Anchor Recruitment. *Biophys J* 2017; **113**: 1269–1279.
80. Vanni S, Hirose H, Barelli H, Antony B, Gautier R. A sub-nanometre view of how membrane curvature and composition modulate lipid packing and protein

- recruitment. *Nat Commun* 2014; **5**: 4916.
81. McMahon HT, Boucrot E. Membrane curvature at a glance. *J Cell Sci* 2015; **128**: 1065–1070.
82. Lee I-H, Kai H, Carlson L-A, Groves JT, Hurley JH. Negative membrane curvature catalyzes nucleation of endosomal sorting complex required for transport (ESCRT)-III assembly. *Proc Natl Acad Sci* 2015; **112**: 15892–15897.
83. Samiee KT, Moran-Mirabal JM, Cheung YK, Craighead HG. Zero Mode Waveguides for Single-Molecule Spectroscopy on Lipid Membranes. *Biophys J* 2006; **90**: 3288–3299.
84. Black JC, Cheney PP, Campbell T, Knowles MK. Membrane curvature based lipid sorting using a nanoparticle patterned substrate. *Soft Matter* 2014; **10**: 2016–2023.
85. Roiter Y, Ornatska M, Rammohan AR, Balakrishnan J, Heine DR, Minko S. Interaction of lipid membrane with nanostructured surfaces. *Langmuir* 2009; **25**: 6287–6299.
86. Cooke IR, Deserno M. Coupling between lipid shape and membrane curvature. *Biophys J* 2006; **91**: 487–95.
87. Callan-Jones A, Sorre B, Bassereau P. Curvature-driven lipid sorting in biomembranes. *Cold Spring Harb Perspect Biol* 2011; **3**: A004648.
88. Toulmay A, Prinz WA. Direct imaging reveals stable, micrometer-scale lipid domains that segregate proteins in live cells. *J Cell Biol* 2013; **202**: 35–44.
89. Head BP, Patel HH, Insel PA. Interaction of membrane/lipid rafts with the cytoskeleton: Impact on signaling and function: Membrane/lipid rafts, mediators of cytoskeletal arrangement and cell signaling. *Biochim Biophys Acta - Biomembr* 2014; **1838**: 532–545.

90. Foster DA. Phosphatidic acid and lipid-sensing by mTOR. *Trends Endocrinol Metab* 2013; **24**: 272–278.
91. Kooijman EE, Chupin V, de Kruijff B, Burger KNJ. Modulation of membrane curvature by phosphatidic acid and lysophosphatidic acid. *Traffic* 2003; **4**: 162–174.
92. Kooijman EE, Chupin V, Fuller NL, Kozlov MM, De Kruijff B, Burger KNJ, Rand PR. Spontaneous curvature of phosphatidic acid and lysophosphatidic acid. *Biochemistry* 2005; **44**: 2097–2102.
93. Hoopes MI, Faller R, Longo ML. Lipid domain depletion at small localized bends imposed by a step geometry. *Langmuir* 2011; **27**: 2783–2788.
94. Zimmerberg J, Kozlov MM. How proteins produce cellular membrane curvature. *Nat Rev Mol Cell Biol* 2006; **7**: 9–19.
95. Pucadyil TJ, Schmid SL. Supported bilayers with excess membrane reservoir: A template for reconstituting membrane budding and fission. *Biophys J* 2010; **99**: 517–525.
96. Neumann S, Pucadyil TJ, Schmid SL. Analyzing membrane remodeling and fission using supported bilayers with excess membrane reservoir. *Nat Protoc* 2013; **8**: 213–222.
97. Stachowiak JC, Schmid EM, Ryan CJ, Ann HS, Sasaki DY, Sherman MB, Geissler PL, Fletcher DA, Hayden CC. Membrane bending by protein-protein crowding. *Nat Cell Biol* 2012; **14**: 944–949.
98. Wang L, Johnson A, Hanna M, Audhya A. Eps15 membrane-binding and -bending activity acts redundantly with Fcho1 during clathrin-mediated endocytosis. *Mol Biol Cell* 2016; **27**: 2675–2687.
99. Dar S, Pucadyil TJ. The pleckstrin-homology domain of dynamin is dispensable for

- membrane constriction and fission. *Mol Biol Cell* 2017; **28**: 152–160.
100. Mattila JP, Shnyrova A V., Sundborger AC, Hortelano ER, Fuhrmans M, Neumann S, Müller M, Hinshaw JE, Schmid SL, Frolov VA. A hemi-fission intermediate links two mechanistically distinct stages of membrane fission. *Nature* 2015; **524**: 109–113.
 101. Roux A, Koster G, Lenz M, Sorre B, Manneville J-B, Nassoy P, Bassereau P. Membrane curvature controls dynamin polymerization. *Proc Natl Acad Sci* 2010; **107**: 4141–4146.
 102. Hervás JH, Landajuela A, Antón Z, Shnyrova A V., Goñi FM, Alonso A. Human ATG3 binding to lipid bilayers: Role of lipid geometry, and electric charge. *Sci Rep* 2017; **7**: 15614.
 103. Dar S, Kamerkar SC, Pucadyil TJ. Use of the supported membrane tube assay system for real-time analysis of membrane fission reactions. *Nat Protoc* 2017; **12**: 390–400.
 104. Roux A, Cappello G, Cartaud J, Prost J, Goud B, Bassereau P. A minimal system allowing tubulation with molecular motors pulling on giant liposomes. *Proc Natl Acad Sci* 2002; **99**: 5394–5399.
 105. Leduc C, Campàs O, Zeldovich KB, Roux A, Jolimaitre P, Bourel-Bonnet L, Goud B, Joanny J-F, Bassereau P, Prost J. Cooperative extraction of membrane nanotubes by molecular motors. *Proc Natl Acad Sci U S A* 2004; **101**: 17096–101.
 106. Hurley JH. ESCRTs are everywhere. *EMBO J* 2015; **34**: 2398–2407.
 107. Olmos Y, Carlton JG. The ESCRT machinery: New roles at new holes. *Curr Opin Cell Biol* 2016; **38**: 1–11.
 108. Hurley JH, Hanson PI. Membrane budding and scission by the ESCRT machinery:

It's all in the neck. *Nat Rev Mol Cell Biol* 2010; **11**: 556–566.

109. Daumke O, Roux A, Haucke V, et al. BAR domain scaffolds in dynamin-mediated membrane fission. *Cell* 2014; **156**: 882–892.
110. Wollert T, Hurley JH. Molecular mechanism of multivesicular body biogenesis by ESCRT complexes. *Nature* 2010; **464**: 864–869.
111. Wollert T, Wunder C, Lippincott-Schwartz J, Hurley JH. Membrane scission by the ESCRT-III complex. *Nature* 2009; **458**: 172–177.
112. Hanson PI, Roth R, Lin Y, Heuser JE. Plasma membrane deformation by circular arrays of ESCRT-III protein filaments. *J Cell Biol* 2008; **180**: 389–402.
113. Chiaruttini N, Redondo-Morata L, Colom A, Humbert F, Lenz M, Scheuring S, Roux A. Relaxation of Loaded ESCRT-III Spiral Springs Drives Membrane Deformation. *Cell* 2015; **163**: 866–879.
114. Mierzwa BE, Chiaruttini N, Redondo-Morata L, Moser Von Filseck J, König J, Larios J, Poser I, Müller-Reichert T, Scheuring S, Roux A, Gerlich DW. Dynamic subunit turnover in ESCRT-III assemblies is regulated by Vps4 to mediate membrane remodelling during cytokinesis. *Nat Cell Biol* 2017; **19**: 787–798.
115. Miles P, Cassidy P, Donlon L, Yarkoni O, Frankel D. In vitro assembly of a viral envelope. *Soft Matter* 2015; **11**: 7722–7727.
116. Miles P, Frankel D. Lipid directed assembly of the HIV capsid protein. *Soft Matter* 2014; **10**: 9562–9567.
117. Boura E, Ivanov V, Carlson LA, Mizuuchi K, Hurley JH. Endosomal sorting complex required for transport (ESCRT) complexes induce phase-separated microdomains in supported lipid bilayers. *J Biol Chem* 2012; **287**: 28144–28151.

118. Ogunyankin MO, Longo ML. Compositional sorting dynamics in coexisting lipid bilayer phases with variations in underlying e-beam formed curvature pattern. *Analyst* 2013; **138**: 3719–3727.
119. Torbati M, Lele TP, Agrawal A. Ultradonut topology of the nuclear envelope. *Proc Natl Acad Sci* 2016; **113**: 11094–11099.
120. Aureille J, Jma Belaadi N, Guilluy C, Lechler T, Salas RC. Mechanotransduction via the nuclear envelope: a distant reflection of the cell surface. *Curr Opin Cell Biol*; **44**. Epub ahead of print 2017. DOI: 10.1016/j.ceb.2016.10.003.
121. Campsteijn C, Vietri M, Stenmark H. Novel ESCRT functions in cell biology: spiraling out of control? *Curr Opin Cell Biol* 2016; **41**: 1–8.
122. Heath GR, Li M, Polignano IL, Richens JL, Catucci G, O'Shea P, Sadeghi SJ, Gilardi G, Butt JN, Jeuken LJCC. Layer-by-Layer Assembly of Supported Lipid Bilayer Poly-L-Lysine Multilayers. *Biomacromolecules* 2015; **17**: 324–335.
123. Wallraff GM, Hinsberg WD. Lithographic Imaging Techniques for the Formation of Nanoscopic Features. *Chem Rev* 1999; **99**: 1801–1822.
124. Garcia R, Knoll AW, Riedo E. Advanced scanning probe lithography. *Nat Nanotechnol* 2014; **9**: 577–587.
125. Crivello J V., Reichmanis E. Photopolymer materials and processes for advanced technologies. *Chem Mater* 2014; **26**: 553–548.

Tables

Table 1. Outline of the techniques for patterning SLBs, their resolutions and disadvantages/advantages.

Figures

Figure 1. In vitro approaches used as models of the biological membrane. (A) Black lipid membranes are formed when dried down lipids are hydrated with an aqueous medium over an aperture between two aqueous phases. (B) Liposomes (50 nm) or giant unilamellar vesicles (100 μm) that self-assemble into these structures when dried down lipids are hydrated in an aqueous medium. (C) In the vesicle fusion method, liposomes are incubated onto a hydrophilic surface where they fuse, deform and spontaneously rupture to form a uniform, continuous, fluid lipid bilayer (D) Langmuir-Blodgett technique: Lipid monolayers are formed at the air-water interface when lipids are added to an aqueous medium. This monolayer is transferred onto a hydrophilic solid support, this transferal process is done twice to form a lipid bilayer. The green arrow indicates the direction the substrate (grey) is moving to pick up another monolayer of lipids (E) Polymer supported/tethered lipid bilayers are formed on top of a polymer cushion hydrogel and also tethering units such as nickel NTA for anchoring of proteins.

Figure 2: Examples of spatial and curved patterns of lipid bilayers on solid support.

(A) High quality, fully mobile SLBs forming well-defined patterned arrays of phase-segregating DOPC:DSPC (1,2-Dioleoyl-sn-glycero-3-phosphocholine (DOPC) and 1,2-distearoyl-sn-glycero-3-phosphocholine (DSPC)) SLBs through the polymer stencil lift-off technique. DHPE-LR (red) (Lissamine rhodamine-labeled 1,2-dihexadecanoyl-sn-glycero-3-phosphoethanolamine) partitions preferentially with DOPC ($L\alpha$ phase), rendering the

DSPC ($L\beta$ phase) domains dark. The insets are magnified images of the small circular and square patterns. Image reproduced from reference 47 with copyright permission. (B) Curvature-sensing proteins incubated on fluid wavy membranes and visualized via confocal fluorescence microscopy. Partitioning of ENTH-GFP, N-BAR-Alexa Fluor 488 and BIN1 N-BAR-Alexa Fluor 488 into positive-curvature regions. Image reproduced from reference 78 with copyright permission. (C) Spontaneous lipid sorting occurs for specific lipid mixtures. For instance, lysophosphatidic acid (LPA) inverted conical shape matches best positive curvature regions when in combinations with cylindrical lipids such as DOPC and both tend to distribute in the outer membrane leaflet. If present, DOPE (DOPE is 1,2-Dioleoyl-sn-glycero-3-phosphoethanolamine) prefers to occupy the inner membrane leaflet (adapted from reference 87). (D) SUPER templates are formed by exploiting the swelling of membranes in high ionic strength buffers. Fusion of liposomes on size silica nanoparticles (~5 nm) in high ionic strength solution, generates bilayers with excess membranes (adapted from reference 96).

Figure 3. Membrane remodelling by the ESCRT complex. (A) Brief overview of some of the cellular functions of the ESCRT complex in mammalian cells. ESCRT-III remodel membranes away from the cytosol. The core remodelling machinery (ESCRT-III) is indicated as a blue spiral. ESCRT-III organises as circular filaments to stabilise the neck of membranes buds. (B) Atomic force microscopy topographic image of the centre of a Snf7 patch assembled on GUV membrane. Image reproduced from reference 113 with copyright permission. (C) The spiral structure acts as a spring collecting elastic energy which upon release buckles the membrane. (D) 3D surface plot of the atomic force microscopy profile showing lipid bilayer formation on top of the 100-nm-deep invaginated template for negative curvature, which approximates the shape of a nascent HIV-1 bud produced by focused ion beam. Image reproduced from reference 82 with copyright permission. (E) Total internal reflection fluorescence (TIRF) image after 20-minute

incubation with 400 nM of the human ESCRT-III core subunit CHMP4B-Atto488 (DiD fluorescein used as blue marker for lipids). Image reproduced from reference 82 with copyright permission.)

Table 1.

Technique	Patterning process	Lateral Resolution	Advantages	Disadvantages	References
Micro-contact printing	Form of soft lithography that fabricates structures using elastomeric stamps, molds and conformable photomasks.	500 nm	<ul style="list-style-type: none"> •No photo-reactive surfaced needed •Resolution can reach tens of nm 	<ul style="list-style-type: none"> •Stamp deformation •Shrinking/swelling of the stamp •Ink diffusion 	40,46
Photo-lithography	Uses light to transfer a pattern from a photo-mask to a light sensitive chemical (photoresist), on a substrate.	<100 nm	<ul style="list-style-type: none"> •Exact control of pattern shape and size •Patterning over the entire surface 	<ul style="list-style-type: none"> •Requires extremely clean operating conditions •Not effective for creating non-flat shapes 	123
Scanning probe lithography	Set of nano-lithographic methods to pattern materials using scanning probes.	10 nm	<ul style="list-style-type: none"> •High resolution as the process bypasses the diffraction limit. 	<ul style="list-style-type: none"> •Slower process in comparison to photolithography. 	42,54,124
Electron beam lithography	A beam of electrons is scanned over a surface covered with an electron-sensitive resist, removing regions of exposed or non-exposed resist to draw a pattern.	<10 nm	<ul style="list-style-type: none"> •High resolution •Direct writing of custom patterns. 	<ul style="list-style-type: none"> •Beam drift and backscattering electrons can cause physical defects. 	50,125
Multi-photon lithography (direct laser writing)	Structuring is achieved by direct fabrication using near infrared femtosecond lasers to induce polymerization at the focal point.	100 nm	<ul style="list-style-type: none"> •Does not require a photo-mask or multiple processing steps. •3D Fabrication 	<ul style="list-style-type: none"> •Short working distance required with objective lens limits the height of the fabricated structures. 	45,55,56

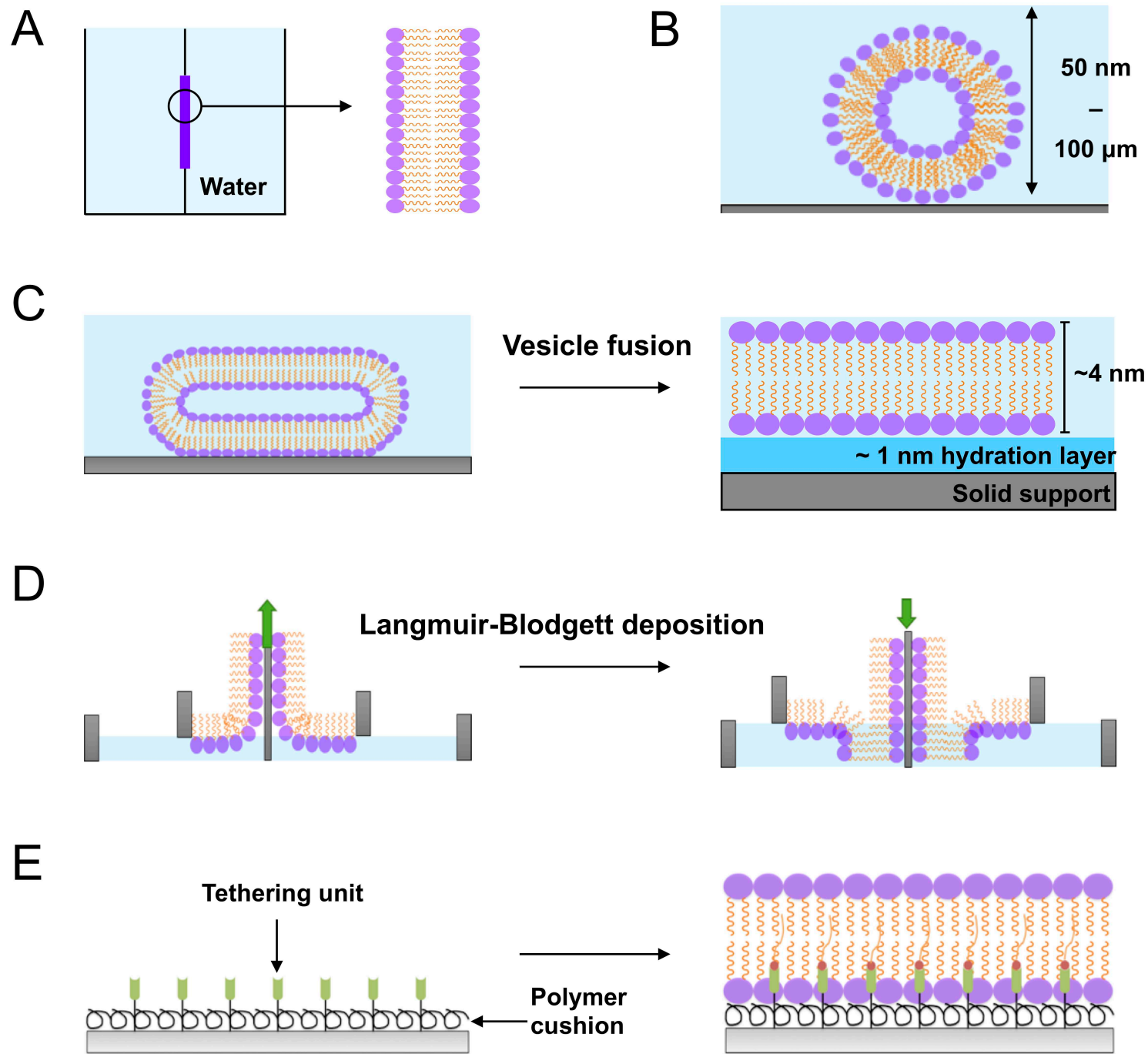


Figure 1

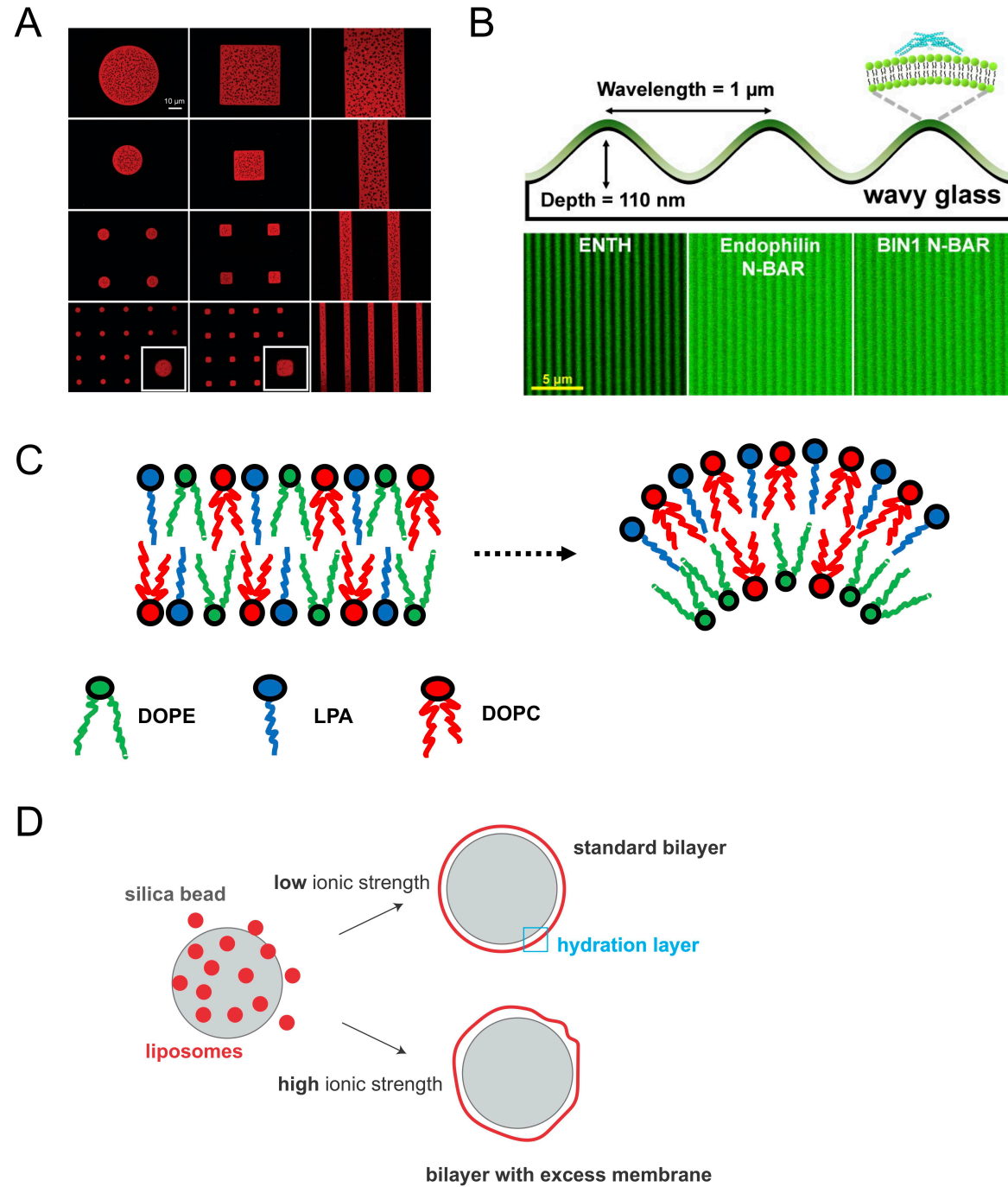


Figure 2

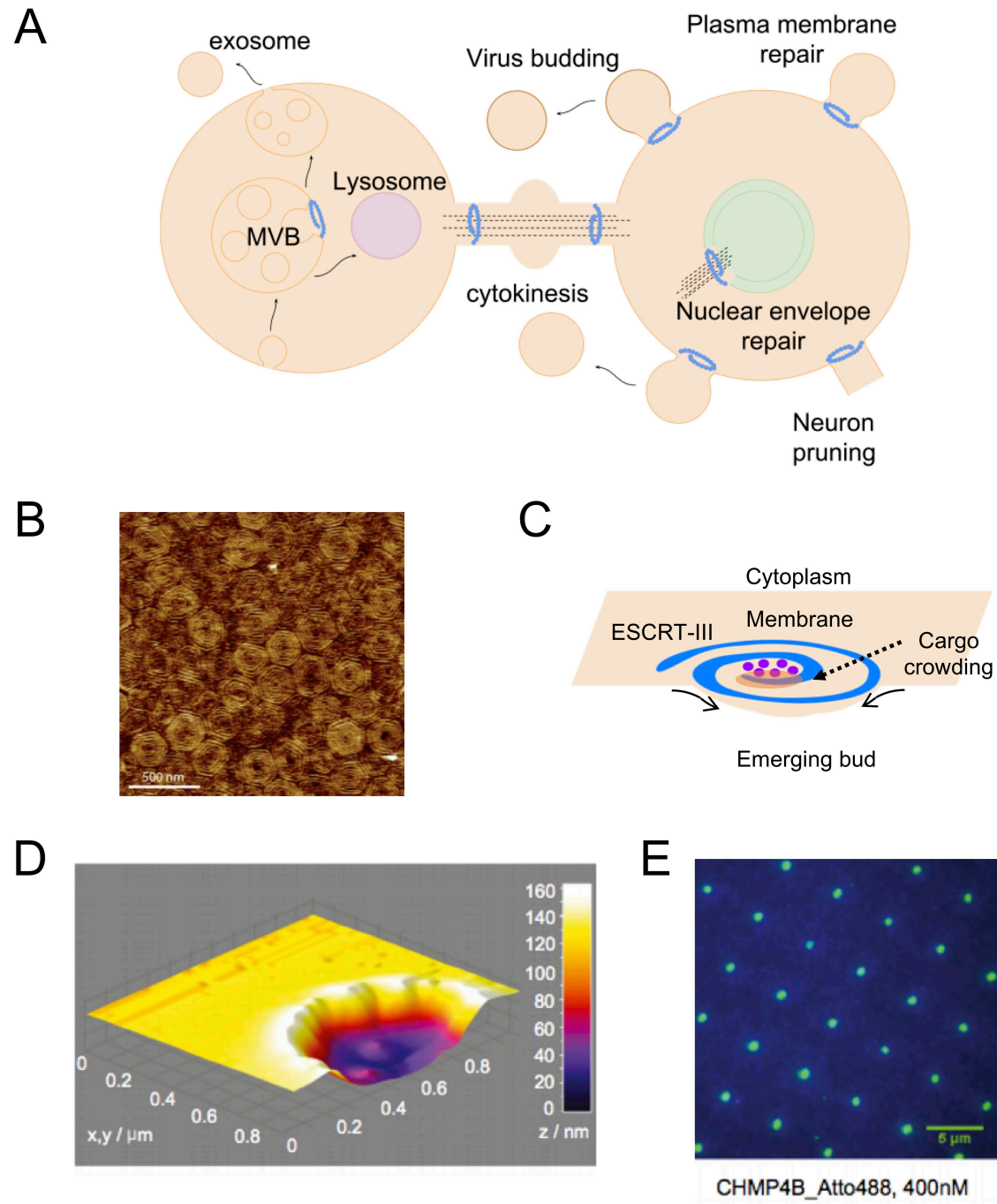


Figure 3