



Deposited via The University of Sheffield.

White Rose Research Online URL for this paper:

<https://eprints.whiterose.ac.uk/id/eprint/1391/>

Article:

McGonigle, A.J.S. (2005) Volcano remote sensing with ground-based spectroscopy. *Philosophical Transactions of the Royal Society A: Mathematical, Physical and Engineering Sciences*, 363 (1837). pp. 2915-2929. ISSN: 1471-2962

<https://doi.org/10.1098/rsta.2005.1668>

Reuse

Items deposited in White Rose Research Online are protected by copyright, with all rights reserved unless indicated otherwise. They may be downloaded and/or printed for private study, or other acts as permitted by national copyright laws. The publisher or other rights holders may allow further reproduction and re-use of the full text version. This is indicated by the licence information on the White Rose Research Online record for the item.

Takedown

If you consider content in White Rose Research Online to be in breach of UK law, please notify us by emailing eprints@whiterose.ac.uk including the URL of the record and the reason for the withdrawal request.

Volcano remote sensing with ground-based spectroscopy

BY ANDREW J. S. MCGONIGLE

*Department of Geography, University of Sheffield, Winter Street,
Sheffield S10 2TN, UK
(a.mcgonigle@shef.ac.uk)*

The chemical compositions and emission rates of volcanic gases carry important information about underground magmatic and hydrothermal conditions, with application in eruption forecasting. Volcanic plumes are also studied because of their impacts upon the atmosphere, climate and human health. Remote sensing techniques are being increasingly used in this field because they provide real-time data and can be applied at safe distances from the target, even throughout violent eruptive episodes. However, notwithstanding the many scientific insights into volcanic behaviour already achieved with these approaches, technological limitations have placed firm restrictions upon the utility of the acquired data. For instance, volcanic SO₂ emission rate measurements are typically inaccurate (errors can be greater than 100%) and have poor time resolution (*ca* once per week). Volcanic gas geochemistry is currently being revolutionized by the recent implementation of a new generation of remote sensing tools, which are overcoming the above limitations and are providing degassing data of unprecedented quality. In this article, I review this field at this exciting point of transition, covering the techniques used and the insights thereby obtained, and I speculate upon the breakthroughs that are now tantalizingly close.

Keywords: volcanology; remote sensing; spectroscopy

1. Introduction

In June 1991, Mt Pinatubo in the Philippines exploded violently, propelling material some 35 km high into the stratosphere (e.g. Newhall *et al.* 2002). This was the world's largest eruption in 80 years and ten times greater than Mt St Helens. Yet, in spite of the enormous loss of life that could have followed, it is estimated that only a few hundred people died as a result. In what is regarded to be the most successful volcanic-hazard mitigation in history, some 80 000 people were safely evacuated shortly before the beginning of this eruption, saving many thousands of lives. Scientists had been carefully monitoring the volcano's behaviour, since activity commenced some months previously, and correctly forecasted this climax to the eruption. One of their key lines of evidence was a rapid tenfold increase in the volcano's SO₂ emission rate (flux), observed with ground-based spectroscopy (Daag *et al.* 1996).

One contribution of 17 to a Triennial Issue 'Astronomy and earth science'.



Figure 1. Volcanic gas emissions from Mt Etna. (a) Crater degassing. (b) Individual fumaroles on a crater rim.

Volcanoes emit gases to the atmosphere both during and between eruptions. These can be exsolved from magma and released through major craters and vents: the so-called primary emissions (see figure 1), which are the focus of most remotely sensed volcanic gas observations. Additionally, volcanoes may release fluids from, or interact with, groundwaters (hydrothermal systems; Symonds *et al.* 1994), and gases can be diffusely emitted through volcanic flanks. The most abundant chemical species in volcanic plumes are H_2O and CO_2 , and other significant components include SO_2 , HCl , HF and H_2S . These gases carry important information about underground conditions such as magmatic composition, volume, transport and degassing dynamics. As such, gas chemical composition and flux are routinely measured at a number of volcanoes worldwide to provide fundamental scientific insights. As the concentration of gas in magma and the dynamics of its escape to the atmosphere are arguably the primary drivers of volcanic activity, strongly influencing whether an eruption is explosive or effusive and triggering rapid switches between these regimes (Sparks 2003), these data are also valuable for forecasting eruptions.

Volcanic gases have important impacts upon the atmosphere and climate (Robock 2000), which must be correctly accounted for in climate change models. In particular, volcanic SO_2 is converted to radiatively active sulphate aerosol, which reflects sunlight back to space (Graf *et al.* 1997). Some scientists think this effect may have been responsible for prehistoric mass extinction events. More recently, aerosol from the Mt Pinatubo eruption cooled the troposphere, entirely offsetting the anthropogenic greenhouse effect for a limited duration. This eruption also caused stratospheric heating, an alteration in global stratospheric circulation patterns and an approximately 20% reduction in Antarctic ozone levels (McCormick *et al.* 1995).

A third motivation for interest in these emissions is the serious environmental and medical impacts they can have (Delmelle *et al.* 2002). For instance, at Masaya volcano, Nicaragua, atmospheric SO_2 concentrations are elevated over a downwind area greater than 1000 km^2 , resulting in loss of revenues from coffee plantations and exposing approximately 50 000 people to levels exceeding World Health Organization air quality standards. One of the world's worst environmental disasters was precipitated by the 1783–1784 eruption of Laki in Iceland, which released over a hundred million tonnes of SO_2 (Thordarson *et al.*

1996). This gas formed a blanket of haze that covered much of Europe, causing destruction of agricultural crops, contamination of pasture and human morbidity and mortality. Benjamin Franklin, then acting as ambassador to France, was one of the first to note the correlation between this volcanic pollution and the anomalously cold weather experienced in Europe and North America at that time.

The conventional method of measuring volcanic gases is to collect a gas sample directly, then transport it to the laboratory for subsequent analysis. Collection methodologies include bubbling gases from vents through alkaline solutions or pumping the gases through base-treated filters, which act as acid traps (Symonds *et al.* 1994). While direct sampling is the most detailed and accurate source of degassing data, this approach suffers a number of limitations: first, routine surveillance may be difficult or impossible owing to the risks involved, which can restrict observations to low-temperature vents that are not representative of the volcano as a whole; second, the samples' chemical compositions may be altered in storage; and third, analysis may involve delays (during volcanic crises data are often required immediately). In comparison, the geophysical techniques used to monitor volcanoes: seismology and geodesy (ground-deformation measurements), enable data to be acquired each second or so from autonomous installed units. While there have been a few efforts to obtain high time resolution continuous geochemical data by direct sampling, for instance using electrochemical sensors, this approach is not yet widespread.

Over the last 30 years, ground-based remote sensing techniques have been increasingly used for volcanic plume measurements, significantly broadening the surveillance capability of volcanic gas geochemistry. The primary advantage of these approaches is safety, as monitoring can take place multiple kilometres from the targets, allowing, in principle, the acquired data to resemble more closely seismic and geodetic data, in respect of continuous monitoring (particularly throughout violent eruptive phases), high time resolution (seconds to minutes) and near-real-time data evaluation. Remote sensing is also non-invasive, thereby avoiding sample-contamination issues; it involves integrated measurements across the whole plume, thus capturing the volcano's bulk degassing behaviour, and it can provide fluxes, which are difficult to extrapolate from directly sampled data.

Spectroscopic plume observations can also be made from space. This began rather serendipitously, when an anomalously high 'ozone' signal was observed over Mexico by the Total Ozone Mapping Spectrometer, following the 1982 eruption of El Chichón. It was soon recognized that this corresponded to absorption of ultraviolet (UV) radiation by volcanic SO₂ (Krueger 1983), and satellite sensors have been used for volcanic plume monitoring ever since (e.g. Bluth *et al.* 1993). However, in view of the inferior spatial and temporal resolution of these instruments, and their higher detection limits relative to ground-based remote sensing devices, they are of limited value in eruption monitoring at present. Rather, their primary utility is in measuring SO₂ burdens of clouds from large explosive eruptions, which cannot be constrained from the ground; a number of significant advances in our understanding of volcanic impacts upon the atmosphere have thus been obtained. As the satellite sensors are being improved constantly (e.g. Carn & Bluth 2003; Carn *et al.* 2005; the newest generation can image far lower altitude plumes than possible hitherto), an

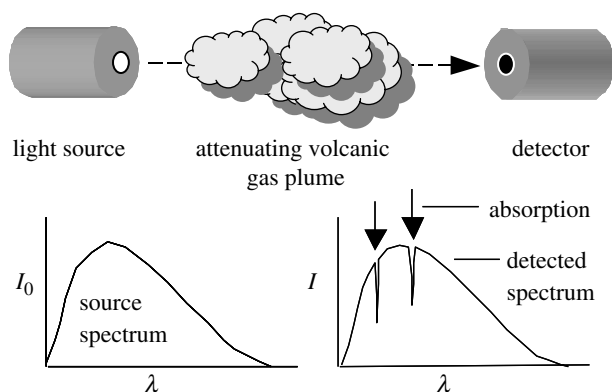


Figure 2. Transmission of radiation (in this case from an artificial lamp) through a volcanic plume, before detection by a spectrometer. The emitted source spectrum $I_0(\lambda)$ and the measured spectrum $I(\lambda)$ differ depending upon the composition of absorbing species in the plume.

exciting future prospect will be increased synchronous applications of space-borne and ground-based volcano remote sensing.

In this article, I outline the two most applied ground-based volcanic plume remote sensing techniques: UV and Fourier transform infrared (FTIR) spectroscopy. A description of some of the observations made, and volcanological insights gleaned, will then be presented, culminating in a discussion of future research prospects.

2. Methodologies

(a) Generic background

The techniques described here are based upon measurements of the spectra of electromagnetic radiation that has been attenuated by passing through a volcanic plume (figure 2). Depending upon the methodology used and the volcano studied, the radiation source may be natural, e.g. direct sunlight, scattered skylight, hot rocks or active lava bodies, or artificial, e.g. a lamp. As each of the volcanic gas species has a unique molecular structure, they have characteristic absorption features, e.g. a particular wavelength will be attenuated to a different extent by each gas present. Therefore, by examining an appropriate spectral window, the presence of these species can be inferred from the distinctive ‘bar-code’ spectral imprints they impress upon the incident radiation. This principle is used to determine gas concentrations quantitatively, using the Beer–Lambert Law:

$$I(\lambda) = I_0(\lambda)\exp[-\sigma(\lambda)NL].$$

$I(\lambda)$ and $I_0(\lambda)$ are the intensities of the radiation measured by the instrument at wavelength λ , when the plume is present and absent from the optical path, respectively; $\sigma(\lambda)$ is the absorption cross-section of the absorbing molecule, a quantitative measure of how strongly it attenuates light. The product of the mean concentration of the attenuating species (N) and the width (L) of the plume viewed (the column amount) can thus be found. In practice, these are

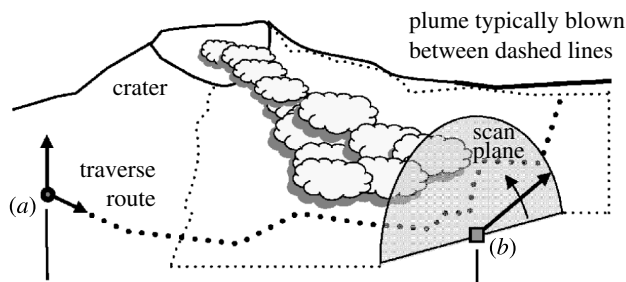


Figure 3. Configurations for making UV SO_2 flux measurements by (a) traversing underneath the volcanic plume with a vertically pointing spectrometer and (b) scanning from a fixed position below the plume.

simultaneously obtained for all volcanic species of interest, using computational fitting routines, which scale $\sigma(\lambda)$ for each gas, across a spectral window.

(b) Ultraviolet spectroscopy

The most commonly used ground-based volcanic plume remote sensing technique is UV spectroscopic measurement of volcanic SO_2 fluxes. Attention has been focused on SO_2 because of its strong UV absorption features, low background atmospheric concentrations and relatively high plume abundances: typically it is the third most ubiquitous species, behind H_2O and CO_2 . In contrast, it is extremely difficult to sense volcanic H_2O and CO_2 remotely because of their high ambient concentrations. SO_2 flux measurements have been made for 30 years with correlation spectrometers (e.g. Stoiber *et al.* 1983), which were recently upgraded with laptop PC controlled USB-powered spectrometers (in particular Ocean Optics Inc. USB2000s; McGonigle *et al.* 2002; Galle *et al.* 2003), which are considerably smaller, lighter, cheaper and less power consuming. During flux measurements, the USB2000 is optical fibre coupled to a vertically pointing telescope, then the plume is traversed from below, by foot, boat, aircraft or road vehicle, and overhead scattered skylight spectra are continuously acquired and saved, as are positional data from a handheld GPS receiver (figure 3a).

The spectra are then processed to determine overhead SO_2 column amounts. First, all spectra collected underneath the plume are divided by a spectrum acquired outside it, according to the Beer–Lambert law, thereby isolating the attenuation of the skylight UV radiation by the plume. As a slight departure from the generic methodology outlined above, the resulting spectra are then high-pass filtered, before being fitted with the SO_2 absorption cross-section, itself identically filtered. This methodology, termed differential optical absorption spectroscopy, removes the possible interference of spectrally broadband attenuation from the plume aerosols. The GPS data are then used to resolve the component of motion perpendicular to the plume transport direction, corresponding to each spectrum acquired underneath the plume; a cross-sectional profile of the plume SO_2 column amounts is thus generated. By integrating across this, then multiplying by the plume transport speed, the SO_2 flux value is obtained.

While most measurements are made by manually traversing the plume (data typically have a time resolution of a few days and are often sustained only for the

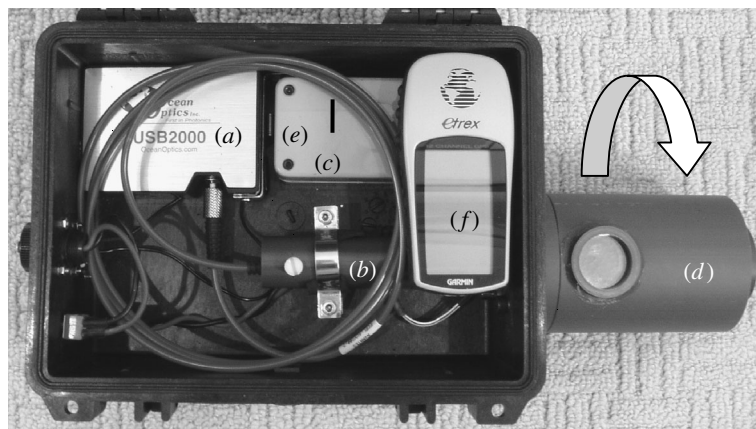


Figure 4. Device for automated scanning SO_2 flux measurements. Skylight is coupled into the USB2000 (a) using a telescope (b) and optical fibre (c). A rotating mirror, located in the protective housing (d), pans the instrument's field of view across the scan plane (see figure 3b) — the stepper control board is contained inside (e). The measurement position, required for the flux calculation, is found using the handheld GPS (f). Spectral acquisition and mirror rotation are controlled using a laptop PC.

duration of a field campaign, e.g. one to two months), a new monitoring configuration, based on scanning the plume from below with a USB2000, has recently been developed (Edmonds *et al.* 2003a; McGonigle *et al.* 2003; figures 3b and 4). With knowledge of the plume's height, which can be determined, for instance by tomographic analysis of the plume profiles observed with two or more scanners, fluxes can be computed in a similar manner to the traverse case. Such a system was automated at the Soufrière Hills volcano, Montserrat, and has been collecting data autonomously since 2002. This is an outstanding example of the value added to volcanological monitoring by rapid capitalization upon new technological opportunities (Edmonds *et al.* 2003a).

While SO_2 fluxes are the most ubiquitous of all ground-based remotely sensed volcanic data, and have provided many valuable scientific insights, they are limited in their utility by large errors (potentially greater than 100%). These primarily originate in the standard practice of using readings from ground-based anemometers as proxies for wind speeds at the plume altitude, typically hundreds of metres above the surface. In addition, the SO_2 flux measurements use scattered skylight, and, while this makes alignment trivial, the flux calculation relies upon the somewhat naïve assumption that the collected light has been scattered into the spectrometer's field of view from above the plume and has thence travelled in a straight vertical line downwards. In reality, the sampled radiation can be scattered above, within (perhaps multiple times from aerosols) and/or below the plume; there has yet to be a rigorous characterization of errors arising from this.

(c) *Fourier transform infrared spectroscopy*

FTIR spectrometers, operating in the near- to mid-infrared wavelength range, are capable of measuring column amounts of gases such as HCl, H_2O , SO_2 , HF, CO_2 , SiF_4 , OCS and CO in volcanic plumes (e.g. Notsu *et al.* 1993; Francis *et al.*

1998). With the miniaturization of FTIR spectrometers for military applications, commercial field-portable devices became available in the 1990s. In many cases, SO₂ flux data are open to highly divergent explanations; interpretation can be clarified with FTIR-derived multiple gas column amount data, because of the species' different physico-chemical properties. Each acquired FTIR spectrum is analysed by using a radiative transfer model to generate a synthetic spectrum, which simulates the absorption along the optical path length by those atmospheric and volcanic species present. By iteratively varying the latter column amounts until the best fit to the observed spectrum is achieved, the plume composition is determined.

A variety of radiation sources can be used with FTIR spectroscopy: direct sunlight, artificial lamps, hot rocks or active lava bodies. While this provides design flexibility and avoids the scattering problems of the UV skylight measurements, alignment in the latter case is, generally, more straightforward. Likewise, FTIR spectrometers are considerably bulkier and more expensive than the USB2000s, and the retrievals are more complex. For these reasons, this approach has not yet become as widespread as UV spectroscopy among volcanologists. Correlation spectroscopy has also been used, albeit to a far lesser extent than FTIR spectroscopy, for remotely sensing multiple volcanic gas species concentrations.

3. Observations

UV spectroscopy was initially applied in a volcanological context to determine whether observed SO₂ fluxes correlate with changes in activity. The simplest mechanism proposed to affect these rates in advance of an eruption is magma rising to shallow depths, where pressures are insufficient to confine the dissolved gases, such that they exsolve and escape to the atmosphere. This interpretation has been ascribed to the behaviour of a number of volcanic events in the past, such as the increase in flux observed before the 1991 Mt Pinatubo eruption (Daag *et al.* 1996). Likewise, increasing SO₂ emissions from Mt Etna have been noted prior to a number of eruptions (Caltabiano *et al.* 1994).

While predicting the onset of eruptions is a vital task for volcanologists, identifying the end or decline of activity can be equally important, informing resettlement strategies for surrounding areas. Remotely sensed data can also provide useful insights here. For instance, spectroscopic measurements following the cataclysmic 1980 eruption of Mt St Helens revealed a general exponential decline in SO₂ flux over the following 8 years (McGee 1992), suggesting a gradual cessation of activity, as the intruded magma, responsible for the main explosion, was steadily losing its dissolved gases and not being recharged. Smaller eruptions during this period were preceded by elevated SO₂ fluxes, indicating intermittent phases of rising magma (McGee & Sutton 1994).

During eruptions volcanic SO₂ fluxes are elevated as gas is erupted with lava at the surface; however, emission rates can also be modulated by non-magmatic trends, such as solid Earth tides. One of the most surprising insights arising from the UV spectroscopic measurements is that volcanoes can also sustain very large SO₂ emissions with little or no corresponding lava eruption (e.g. Kazahaya *et al.* 2004). An extreme example of this was the passive emission of up to

60 000 tonnes day⁻¹ from Popocatépetl volcano in Mexico during 1997, roughly double the time-averaged SO₂ release from all the volcanoes in the world. A model, whereby gas is released from a bubbly layer at the top of magma chambers, has been proposed to account for such behaviour (Wallace 2001).

SO₂ flux measurements are relatively straightforward to interpret where the gases are free to escape to the atmosphere. However, in many cases the situation is more complicated, e.g. the magmatic gases might bubble through a hydrothermal system, which dissolves each species to a different extent, or fracture networks above the magma chamber can seal, inhibiting gas escape. For these reasons, SO₂ flux data alone have been less successful when applied to predicting the vent-clearing cataclysmic explosions that often begin eruptions. For instance, prior to the eruption of Mt St Helens, and in spite of the presence of magma at shallow depth, measured SO₂ fluxes were very low, owing to a rock carapace, which severely restricted gas release.

The ongoing activity of the Soufrière Hills volcano has been monitored using both UV and FTIR spectroscopy. A degassing model has thus been developed, whereby the emissions are derived from two distinct sources: SO₂ is released from a 'mafic' magma, intruded from depth into the chamber of an 'andesite' magma, itself rich in HCl (Edmonds *et al.* 2001, 2003*b*). The latter magma is relatively viscous; therefore, when extruded through the volcano's conduit, it forms a lava dome at the volcano summit, rather than the lava flows typical of other eruptive styles. These episodes are characterized by elevated HCl fluxes, with exsolution of this gas upon ascent; conversely, HCl fluxes are low when dome growth does not take place. In contrast, SO₂ is emitted discontinuously, depending on the permeability of the system. One proposed sealing mechanism is closure of interconnecting bubble networks in the andesite.

Activity at the Soufrière Hills volcano had apparently stopped during 1998, with cessation of dome growth and seismic signals; yet SO₂ emissions did not decline, but rather continued with higher rates than observed during previous phases of lava extrusion. This provided key evidence that the eruption was not over, and indeed activity was later resumed, highlighting the importance of remote sensing in this context. Gas-measurement-based criteria for identifying the end of this eruption have also been highlighted: persistently low HCl and SO₂ fluxes would indicate that mafic charging of the magma chamber has ended, as has the resulting dome growth.

While FTIR spectroscopy is normally based upon monitoring volcanic gases' absorption of radiation from a hotter background source, Love *et al.* (1998) used FTIR spectroscopy to observe the plume's emitted spectra, in contrast to that of the cold sky background. At Popocatépetl volcano, Mexico, they observed a steady increase in SiF₄/SO₂ ratio over a few days prior to an explosive eruption during February 1997, followed by a rapid tenfold decrease to the pre-eruptive value. Owing to temperature-dependent equilibration between the volcanic species present, this ratio is a proxy for gas temperature and indicated cooling prior to the eruption. The interpretation given was that the gases adiabatically expanded as the conduit plug began to give way in advance of the eruption.

Different gases have different pressure-dependent solubilities in magma, so the ratios of volcanic gas concentrations are also important indicators of the depth of exsolution from the melt. For instance, SO₂ is removed at greater depths than HCl; therefore, a high SO₂/HCl ratio is indicative of deep exsolution, and a low

ratio implies shallower degassing. On occasions, volcanoes can manifest 'lava fountaining' behaviour, where gas jets propel lava fragments to heights of several hundred metres. However, whether this gas is exsolved during these episodes, or they are driven by a gas layer previously accumulated at depth, has been a matter of debate. FTIR spectroscopic observations of relatively high SO_2/HCl gas ratios for a lava fountain on Mt Etna during 2000 have clarified this matter by indicating the latter origin of gas in this case (Allard *et al.* 2005). Constraints upon exsolution depths have also been used to map the underground branched magmatic system, which feeds the active vents on Mt Etna (Burton *et al.* 2003).

Even greater scope for interpretation is provided by combining parallel geophysical and remotely sensed volcanic gas observations. Galeras volcano in Colombia has been the focus of considerable scientific attention, following a resurgence of activity in 1988. During this period, a number of explosive eruptions occurred, one of which resulted in the tragic deaths of six scientists and three tourists. Prior to such events reduced SO_2 fluxes were observed, in parallel with increasing 'long-period' seismic signals, analogous to the resonances formed in organ pipes. In retrospect, this behaviour was interpreted to indicate sealing and pressurization of gas within the system, followed by explosive release (Stix *et al.* 1993; Fischer *et al.* 1994). One proposed mechanism for this was precipitation of minerals, arising from a hydrothermal system, in gas pathways to the surface. In cases where hydrothermal interactions are suspected, FTIR spectroscopic data act as valuable adjuncts to UV spectroscopic SO_2 fluxes in clarifying interpretation, given the different water solubilities of the gases (e.g. HCl , SO_2 and HF) accessible to the former approach (e.g. Symonds *et al.* 2001).

The UV flux measurements, made at many targets worldwide, have been used to derive a total global volcanic SO_2 emission of approximately 20 Mton yr^{-1} (e.g. Stoiber *et al.* 1987); from this the total fluxes of other volcanic species have been calculated. While this volcanic flux is only around one-fifth of the total anthropogenic release, sulphate loading of the atmosphere may be comparable from the two sources, as the former emitters are, generally, at higher altitudes, where aerosol lifetimes are longer. This is highly significant, as anthropogenic sulphate is presently considered to be the most important factor offsetting the anthropogenic greenhouse effect. Recently, USB2000s have been adapted for remotely sensed measurements of two other volcanogenic gases: NO_2 and BrO (Bobrowski *et al.* 2003). The former observation supports a recent report that volcanoes may have played a significant role in generating biologically available forms of nitrogen, via thermal fixation, during the evolution of the early Earth (Mather *et al.* 2004). The BrO data indicate that volcanoes may constitute a significant (yet hitherto largely overlooked) supply of bromine to the lower atmosphere, with potentially important impacts upon tropospheric ozone chemistry.

4. The future

Ground-based remote sensing has provided invaluable insights into volcanic behaviour, which in many cases could not have been obtained in any other way, owing to the hazards of working closer to the source. These data can be used as proxies for underground magma mass and migration, changes in temperature,

sealing or opening of systems and depth of degassing, and they have assisted eruption forecasting measures. However, until recently, they have suffered from a number of significant limitations, such that their full potential has yet to be realized: first, flux measurements have large errors (potentially greater than 100%), primarily owing to the anemometric proxies used for plume speeds; second, they normally have low time resolution (*ca* one week) and are typically sustained for a few months at most; and third, measurements of multiple species (often vital for accurate geochemical interpretation) are not widespread, owing to the complexity and expense of FTIR spectroscopy. For these reasons, while degassing is arguably the primary driver of volcanic activity, determining much observed seismicity and ground deformation, measurements of the latter phenomena are presently considered to be of greater utility in volcano monitoring.

The volcanological application of the USB spectrometers heralds a new era for volcanic gas geochemistry. Automated scanning versions of these devices have been developed over the last few years and enable acquisition of high time resolution (a few minutes) sustained SO₂ fluxes. In addition, it has been demonstrated very recently that accurate plume transport speeds can be measured using two vertically pointing USB2000s, located underneath the plume at different distances from the source (McGonigle *et al.* 2005; Williams-Jones *et al.* in press). By cross-correlating the overhead SO₂ column amount time-series from these devices, the time of transit of individual plume ‘parcels’ can be obtained, allowing accurate flux measurements (errors less than 10%). By combining these two approaches, truly unprecedented sustained flux data will become available, in respect of time resolution and accuracy. In addition to the gases already measured, the USB2000 shows potential for remote measurements of other volcanogenic species, such as ClO. While these devices are unlikely to replace FTIR spectroscopy as the standard remote sensing technique for multiple volcanic gas column amount measurements, at least not in the near future, they could prove to be a useful and relatively inexpensive adjunct in this regard.

As a proxy for eruptive activity, SO₂ suffers the disadvantage of being readily removed by hydrothermal systems. CO₂, which exsolves from magma deeper, and is comparatively water insoluble, is a far more useful magmatic tracer. Unfortunately, it is notoriously difficult to measure volcanic CO₂ using remote sensing, owing to its high ambient concentrations. While FTIR spectroscopic observation of this species has been achieved in volcanic plumes (Burton *et al.* 2000), this has been performed only with an artificial lamp source, a configuration that is not widely applicable and requires relatively close access to the source. A number of research groups have tried, without success to date, to develop instruments for spectroscopic CO₂ measurements, using scattered skylight as the radiation source. One possible solution is pressure modulation radiometry, which measures vertically resolved gas profiles and may be able to spatially filter out much of the background CO₂ signal. While LIDAR are capable of making volcanic CO₂ flux measurements, these devices are power consuming and not field portable at present. A new radiometric technique for monitoring H₂O fluxes has recently been developed and applied at a number of Japanese volcanoes.

O’Dwyer *et al.* (2003) have measured SO₂/H₂S ratios with a USB spectrometer and deuterium bulb source over open optical paths (figure 5) and by pumping

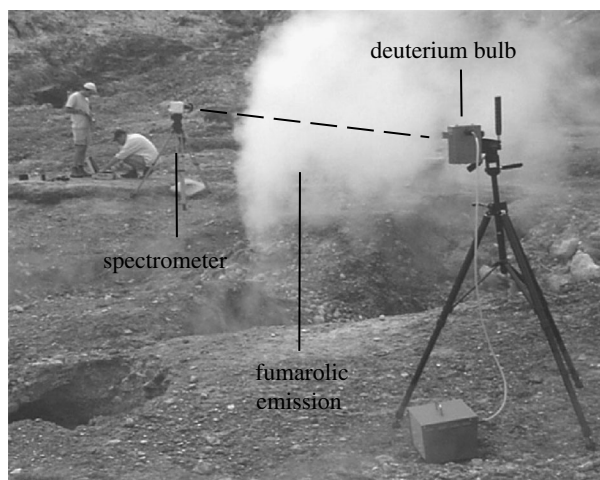


Figure 5. Spectroscopic measurements of $\text{H}_2\text{S}/\text{SO}_2$ ratios, using a USB spectrometer and deuterium bulb, at Solfatara, Campi Flegrei, Italy. Dashed line denotes optical path. Photograph courtesy of Miles Padgett.

fumarolic gas into an optical cell. With ruggedization, the latter configuration shows potential for sustained autonomous operation; and by adding further spectrometer channels it could potentially monitor HCl , CO_2 and H_2O , in addition. More complex variations of this, based on laser spectroscopy, have been developed, which measure isotope ratios and are thus capable of providing additional geochemical information.

With the development and implementation of the above technologies, spectacular breakthroughs in volcanology are foreseen during the coming decade, in two particular ways. First, the great improvements in accuracy and time resolution of SO_2 flux time-series will enable rigorous corroboration of degassing data with geophysical datasets (seismic, geodetic, thermal and acoustic). Such inter-parametric analyses were hindered by the poor degassing data previously available, yet are a key to increasing our volcanological understanding, given growing evidence for the interconnectedness of these phenomena (e.g. [Watson *et al.* 2000](#)). Second, these technological improvements will allow the first detailed flux-data-based testing and parameterization of numerical volcanic conduit models (e.g. [Melnik & Sparks 1999](#)). The gas data will thus progress from being primarily a useful means of cataloguing volcanic behaviour in retrospect to playing a more vital role in forecasting eruptions, thereby attaining a status more commensurate with the great importance of degassing in driving volcanic activity.

While our understanding of the effects of plumes from explosive eruptions upon the stratosphere is relatively advanced, less is known about the impacts of smaller plumes upon the troposphere. With better and more widely distributed ground-based remote sensing technologies, in parallel with novel satellite sensors, this situation will improve as global volcanic fluxes become better constrained, both spatially and temporally. Further investigations into the conversion of SO_2 to sulphate aerosol will provide additional insights here; however, it remains to be seen whether USB2000 observations alone can provide sufficient accuracy to

improve our present understanding of this phenomenon. Better characterization of the important radiative forcing role played by tropospheric volcanic plumes would help improve climate change models, at a time when accurate climate forecasting has never been so important.

The author is supported by a NERC post-doctoral fellowship. Pierre Delmelle and David Pyle are thanked for their conscientious reviews, which have greatly improved the quality of this paper.

References

- Allard, P., Burton, M. & Muré, P. 2005 Spectroscopic evidence for a lava fountain driven by previously accumulated magmatic gas. *Nature* **433**, 407–410. (doi:10.1038/nature03246.)
- Bluth, G. J. S., Schnetzler, C. C., Kreuger, A. J. & Walter, L. S. 1993 The contribution of explosive volcanism to global atmospheric sulfur-dioxide concentrations. *Nature* **366**, 327–329. (doi:10.1038/366327a0.)
- Bobrowski, N., Hönninger, G., Galle, B. & Platt, U. 2003 Detection of bromine monoxide in a volcanic plume. *Nature* **423**, 273–276. (doi:10.1038/nature01625.)
- Burton, M. R., Oppenheimer, C., Horrocks, L. A. & Francis, P. W. 2000 Remote sensing of CO₂ and H₂O emission rates from Masaya volcano, Nicaragua. *Geology* **28**, 915–918. (doi:10.1130/0091-7613(2000)028<0915:RSOCAH>2.3.CO;2.)
- Burton, M. R., Allard, P., Muré, P. & Oppenheimer, C. 2003 FTIR remote sensing of fractional magma degassing and Mount Etna, Sicily. In *Volcanic degassing* (ed. C. Oppenheimer, D. M. Pyle & J. Barclay), pp. 281–293. London: The Geological Society.
- Caltabiano, T., Romano, R. & Budetta, G. 1994 SO₂ flux measurements at Mount Etna (Sicily). *J. Geophys. Res.* **99**, 12 809–12 819. (doi:10.1029/94JD00224.)
- Carn, S. A. & Bluth, G. J. S. 2003 Prodigious sulfur dioxide emissions from Nyamuragira volcano, DR Congo. *Geophys. Res. Lett.* **30**, 2211. (doi:10.1029/2003GL018465.)
- Carn, S. A., Strow, L. L., de Souza-Machado, S., Edmonds, Y. & Hannon, S. 2005 Quantifying tropospheric volcanic emissions with AIRS: the 2002 eruption of Mt Etna (Italy). *Geophys. Res. Lett.* **32**, L02301. (doi:10.1029/2004GL021034.)
- Daag, A. S. *et al.* 1996 Monitoring sulfur dioxide emission at Mount Pinatubo. In *Fire and mud: eruptions and lahars of Mount Pinatubo Philippines* (ed. C. G. Newhall & R. S. Punongbayan), pp. 409–414. Seattle: University of Washington Press.
- Delmelle, P., Stix, J., Baxter, P. J., Garcia-Alvarez, J. & Barquero, J. 2002 Atmospheric dispersion, environmental effects and potential health hazard associated with the low-altitude gas plume of Masaya volcano, Nicaragua. *Bull. Volcanol.* **64**, 423–434. (doi:10.1007/s00445-002-0221-6.)
- Edmonds, M., Pyle, D. & Oppenheimer, C. 2001 A model for degassing at the Soufrière Hills Volcano, Montserrat, West Indies, based on geochemical data. *Earth Planet. Sci. Lett.* **186**, 159–173. (doi:10.1016/S0012-821X(01)00242-4.)
- Edmonds, M., Herd, R. A., Galle, B. & Oppenheimer, C. M. 2003a Automated, high time-resolution measurements of SO₂ flux at Soufrière Hills Volcano, Montserrat. *Bull. Volcanol.* **65**, 578–586. (doi:10.1007/s00445-003-0286-x.)
- Edmonds, M., Oppenheimer, C., Pyle, D. M., Herd, R. A. & Thompson, G. 2003b SO₂ emissions from Soufrière Hills volcano and their relationship to conduit permeability, hydrothermal interaction and degassing regime. *J. Volcanol. Geotherm. Res.* **124**, 23–43. (doi:10.1016/S0377-0273(03)00041-6.)
- Fischer, T. P., Morrissey, M. M., Calvache, M. L., Gomez, D., Torres, R., Stix, J. & Williams, S. N. 1994 Correlations between SO₂ flux and long-period seismicity at Galeras Volcano. *Nature* **368**, 135–137. (doi:10.1038/368135a0.)
- Francis, P., Burton, M. & Oppenheimer, C. 1998 Remote measurements of volcanic gas compositions by solar FTIR spectroscopy. *Nature* **396**, 567–570. (doi:10.1038/25115.)

- Galle, B., Oppenheimer, C., Geyer, A., McGonigle, A. J. S., Edmonds, M. & Horrocks, L. A. 2003 A miniaturised UV spectrometer for remote sensing of SO₂ fluxes: a new tool for volcano surveillance. *J. Volcanol. Geotherm. Res.* **119**, 241–254. (doi:10.1016/S0377-0273(02)00356-6.)
- Graf, H. F., Feichter, J. & Langmann, B. 1997 Volcanic sulfur emissions: estimates of source strength and its contribution to the global sulphate distribution. *J. Geophys. Res.* **102**, 10 727–10 738. (doi:10.1029/96JD03265.)
- Kazahaya, K., Shinohara, H., Uto, K., Odai, M., Nakahori, Y., Mori, H., Iino, H., Miyashita, M. & Hirabayashi, J. 2004 Gigantic SO₂ emission from Miyakejima volcano, Japan, caused by caldera collapse. *Geology* **32**, 425–428. (doi:10.1130/G20399.1.)
- Krueger, A. J. 1983 Sighting of El-Chichón sulphur-dioxide clouds with the Nimbus-7 total ozone mapping spectrometer. *Science* **220**, 1377–1379.
- Love, S. P., Goff, F., Counce, D., Siebe, C. & Delgado, H. 1998 Passive infrared spectroscopy of the eruption plume at Popocatepetl volcano, Mexico. *Nature* **396**, 563–567. (doi:10.1038/25109.)
- Mather, T. A., Pyle, D. M. & Allen, A. G. 2004 Volcanic source for fixed nitrogen in the early Earth's atmosphere. *Geology* **32**, 905–908. (doi:10.1130/G20679.1.)
- McCormick, M. P., Thomason, L. W. & Trepte, C. R. 1995 Atmospheric effects of the Mt Pinatubo eruption. *Nature* **373**, 399–404. (doi:10.1038/373399a0.)
- McGee, K. A. 1992 The structure, dynamics and chemical composition of non-eruptive plumes from Mt St. Helens, 1980–1988. *J. Volcanol. Geotherm. Res.* **51**, 269–282. (doi:10.1016/0377-0273(92)90127-Y.)
- McGee, K. A. & Sutton, A. 1994 Eruptive activity at Mount-St-Helens, Washington, USA, 1984–1988—a gas geochemistry perspective. *Bull. Volcanol.* **56**, 435–446. (doi:10.1007/s004450050053.)
- McGonigle, A. J. S., Oppenheimer, C., Galle, B., Mather, T. A. & Pyle, D. M. 2002 Walking traverse and scanning DOAS measurements of volcanic gas emission rates. *Geophys. Res. Lett.* **29**, 1985. (doi:10.1029/2002GL015827.)
- McGonigle, A. J. S., Oppenheimer, C., Galle, B., Edmonds, M., Caltabiano, T., Salerno, G., Burton, M. & Mather, T. A. 2003 Volcanic sulphur dioxide flux measurements at Etna, Vulcano and Stromboli obtained using an automated scanning static ultraviolet spectrometer. *J. Geophys. Res.* **108**, 2455. (doi:10.1029/2002JB002261.)
- McGonigle, A. J. S., Inguaggiato, S., Aiuppa, A., Hayes, A. R. & Oppenheimer, C. 2005 Accurate measurement of volcanic SO₂ flux: determination of plume transport speed and integrated SO₂ concentration with a single device. *Geochem. Geophys. Geosyst.* **6**, Q02003.
- Melnik, O. & Sparks, R. S. J. 1999 Nonlinear dynamics of lava dome extrusion. *Nature* **402**, 37–41. (doi:10.1038/46950.)
- Newhall, C. G., Power, J. A. & Punongbayan, R. S. 2002 Pinatubo eruption—'To make grow'. *Science* **295**, 1241–1242. (doi:10.1126/science.1069838.)
- Notsu, K., Mori, T., Igarashi, G., Tohjima, Y. & Wakita, H. 1993 Infrared spectral radiometer: a new tool for remote measurement of SO₂ of volcanic gas. *Geochem. J.* **27**, 361–366.
- O'Dwyer, M., McGonigle, A. J. S., Padgett, M. J., Oppenheimer, C. & Inguaggiato, S. 2003 Real time measurements of volcanic H₂S/SO₂ ratios by UV spectroscopy. *Geophys. Res. Lett.* **30**, 1652. (doi:10.1029/2003GL017246.)
- Robock, A. 2000 Volcanic eruptions and climate. *Rev. Geophys.* **38**, 191–219. (doi:10.1029/1998RG000054.)
- Sparks, R. S. J. 2003 Dynamics of magma degassing. In *Volcanic degassing* (ed. C. Oppenheimer, D. M. Pyle & J. Barclay), pp. 5–22. London: The Geological Society.
- Stix, J. *et al.* 1993 A model of degassing at Galeras volcano, Colombia, 1988–1993. *Geology* **21**, 963–967. (doi:10.1130/0091-7613(1993)021<0963:AMODAG>2.3.CO;2.)
- Stoiber, R. E., Malinconico, L. L. & Williams, S. N. 1983 Use of the correlation spectrometer at volcanoes. In *Forecasting volcanic events* (ed. H. Tazieff & J. C. Sabroux), pp. 425–444. Amsterdam: Elsevier.
- Stoiber, R. E., Williams, S. N. & Huebert, B. 1987 Annual contribution of sulphur dioxide to the atmosphere by volcanoes. *J. Volcanol. Geotherm. Res.* **33**, 1–8. (doi:10.1016/0377-0273(87)90051-5.)

- Symonds, R. B., Rose, W. I., Bluth, G. J. S. & Gerlach, T. M. 1994 Volcanic gas studies—methods, results, and applications. *Rev. Mineral.* **30**, 1–66.
- Symonds, R. B., Gerlach, T. M. & Reed, M. H. 2001 Magmatic gas scrubbing: implications for volcano monitoring. *J. Volcanol. Geotherm. Res.* **108**, 303–341. (doi:10.1016/S0377-0273(00)00292-4.)
- Thordarson, T., Self, S., Oskarsson, N. & Hulsebosch, T. 1996 Sulfur, chlorine and fluorine degassing and atmospheric loading by the 1783–1784 AD Laki (Skaftar fires) eruption in Iceland. *Bull. Volcanol.* **58**, 205–225. (doi:10.1007/s004450050136.)
- Wallace, P. J. 2001 Volcanic SO₂ emissions and the abundance and distribution of exsolved gas in magma bodies. *J. Volcanol. Geotherm. Res.* **108**, 85–106. (doi:10.1016/S0377-0273(00)00279-1.)
- Watson, I. M. *et al.* 2000 The relationship between degassing and deformation at Soufrière Hills volcano, Montserrat. *J. Volcanol. Geotherm. Res.* **98**, 117–126. (doi:10.1016/S0377-0273(99)00187-0.)
- Williams-Jones, G., Horton, K., Garbeil, H., Mouginiis-Mark, P. J., Harris, A. J. L., Sutton, A. J. & Elias, T. In press. Accurately measuring volcanic plume velocities with multiple UV spectrometers. *Bull. Volcanol.*

AUTHOR PROFILE

Andrew J. S. McGonigle



Andrew J. S. McGonigle was born in 1973. He grew up in Edinburgh, graduating from St Andrews University with an M. Sci. degree in theoretical physics in 1995. After spending a year working for a charity in Zambia, he returned to university to study for a D.Phil. in laser physics at the University of Oxford. He then worked for a start-up company, before joining the Department of Geography at the University of Cambridge in 2001 as a research associate. From 2002 to 2005 he was a NERC Post-doctoral Research Fellow at Cambridge, developing and applying spectroscopic techniques for monitoring emissions from power stations, volcanoes and biomass burning. He is presently a DTI Academic Research Fellow at the University of Sheffield. Photograph: helicopter-borne UV spectroscopic measurements of SO₂ flux at Stromboli volcano, courtesy of Saibbo Inguaggiato.