



Deposited via The University of Leeds.

White Rose Research Online URL for this paper:

<https://eprints.whiterose.ac.uk/id/eprint/136530/>

Version: Accepted Version

---

**Article:**

Botteri, G, Salvadó, L, Gumà, A et al. (2018) The BACE1 product sAPP $\beta$  induces ER stress and inflammation and impairs insulin signaling. *Metabolism*, 85. pp. 59-75. ISSN: 0026-0495

<https://doi.org/10.1016/j.metabol.2018.03.005>

---

© 2018 Elsevier Inc. Licensed under the Creative Commons Attribution-NonCommercial-NoDerivatives 4.0 International License (<http://creativecommons.org/licenses/by-nc-nd/4.0/>).

**Reuse**

This article is distributed under the terms of the Creative Commons Attribution-NonCommercial-NoDerivs (CC BY-NC-ND) licence. This licence only allows you to download this work and share it with others as long as you credit the authors, but you can't change the article in any way or use it commercially. More information and the full terms of the licence here: <https://creativecommons.org/licenses/>

**Takedown**

If you consider content in White Rose Research Online to be in breach of UK law, please notify us by emailing [eprints@whiterose.ac.uk](mailto:eprints@whiterose.ac.uk) including the URL of the record and the reason for the withdrawal request.

# THE BACE1 PRODUCT sAPP $\beta$ INDUCES ER STRESS AND INFLAMMATION AND IMPAIRS INSULIN SIGNALING

Gaia Botteri<sup>1,2,3,4</sup>, Laia Salvadó<sup>1,2,3,4</sup>, Anna Gumà<sup>2,3,5</sup>, D. Lee Hamilton<sup>6</sup>, Paul J. Meakin<sup>6</sup>, Gemma Montagut<sup>6</sup>, Michael L.J. Ashford<sup>6</sup>, Victoria Ceperuelo-Mallafre<sup>3,7</sup>, Sonia Fernández-Veledo<sup>3,7</sup>, Joan Vendrell<sup>3,7</sup>, María Calderón-Dominguez<sup>2,8,9</sup>, Dolores Serra<sup>2,8,9</sup>, Laura Herrero<sup>2,8,9</sup>, Javier Pizarro<sup>1,2,3,4</sup>, Emma Barroso<sup>1,2,3,4</sup>, Xavier Palomer<sup>1,2,3,4</sup>, and Manuel Vázquez-Carrera<sup>1,2,3,4</sup>

<sup>1</sup>Pharmacology Unit, Department of Pharmacology, Toxicology and Therapeutic Chemistry, Faculty of Pharmacy and Food Sciences, University of Barcelona. <sup>2</sup>Institut de Biomedicina de la Universitat de Barcelona (IBUB). <sup>3</sup>Centro de Investigación Biomédica en Red de Diabetes y Enfermedades Metabólicas Asociadas (CIBERDEM), Instituto de Salud Carlos III, Barcelona, Spain. <sup>4</sup>Institut de Recerca Sant Joan de Déu (IR-SJD), Esplugues de Llobregat, Barcelona. <sup>5</sup>Department of Biochemistry and Molecular Biology, Faculty of Biology, University of Barcelona, Barcelona, Spain. <sup>6</sup>Division of Molecular and Clinical Medicine, School of Medicine, Ninewells Hospital & Medical School, University of Dundee, Dundee, UK. <sup>7</sup>Hospital Universitari de Tarragona Joan XXIII, Institut d'Investigació Sanitària Pere Virgili, Universitat Rovira i Virgili, Tarragona, Spain. <sup>8</sup>Department of Biochemistry and Physiology, Faculty of Pharmacy and Food Sciences, University of Barcelona. <sup>9</sup>Centro de Investigación Biomédica en Red de Fisiopatología de la Obesidad y la Nutrición (CIBEROBN), Instituto de Salud Carlos III, Barcelona, Spain

**Keywords:** BACE1, CREB, insulin resistance, NF- $\kappa$ B, palmitate, PGC-1 $\alpha$ , sAPP $\beta$ .

**Corresponding author:** Manuel Vázquez-Carrera. Unitat de Farmacologia. Facultat de Farmàcia.

Avinguda Joan XXIII 27-31. E-08028 Barcelona. Spain. Phone 93 4024531. Fax 93 4035982

E-mail: [mvazquezcarrera@ub.edu](mailto:mvazquezcarrera@ub.edu)

## Abstract

### Objective

$\beta$ -secretase/ $\beta$ -site amyloid precursor protein (APP)-cleaving enzyme 1 (BACE1) is a key enzyme involved in Alzheimer's disease that has recently been implicated in insulin-independent glucose uptake in myotubes. However, it is presently unknown whether BACE1 and the product of its activity, soluble APP $\beta$  (sAPP $\beta$ ), contribute to lipid-induced inflammation and insulin resistance in skeletal muscle cells.

### Materials/Methods

Studies were conducted in mouse C2C12 myotubes, skeletal muscle from *Bace1*<sup>-/-</sup> mice and mice treated with sAPP $\beta$  and adipose tissue and plasma from obese and type 2 diabetic patients.

### Results

We show that BACE1 inhibition or knockdown attenuates palmitate-induced endoplasmic reticulum (ER) stress, inflammation, and insulin resistance and prevents the reduction in Peroxisome Proliferator-Activated Receptor  $\gamma$  Co-activator 1 $\alpha$  (PGC-1 $\alpha$ ) and fatty acid oxidation caused by palmitate in myotubes. The effects of palmitate on ER stress, inflammation, insulin resistance, PGC-1 $\alpha$  down-regulation, and fatty acid oxidation were mimicked by soluble APP $\beta$  *in vitro*. BACE1 expression was increased in subcutaneous adipose tissue of obese and type 2 diabetic patients and this was accompanied by a decrease in PGC-1 $\alpha$  mRNA levels and by an increase in sAPP $\beta$  plasma levels of obese type 2 diabetic patients compared to obese non-diabetic subjects. Acute sAPP $\beta$  administration to mice reduced PGC-1 $\alpha$  levels and increased inflammation in skeletal muscle and decreased insulin sensitivity.

### Conclusions

Collectively, these findings indicate that the BACE1 product sAPP $\beta$  is a key determinant in ER stress, inflammation and insulin resistance in skeletal muscle and gluconeogenesis in liver.

## 1. Introduction

1 The primary site of insulin stimulated glucose disposal is skeletal muscle, which can account for up to 90%  
2 of glucose clearance [1]. As a result, loss of skeletal muscle insulin sensitivity is believed to be critical in  
3  
4 the pathogenesis of type 2 diabetes mellitus (T2DM) [2,3]. In fact, one of the earliest detectable defects in  
5  
6 individuals at risk of T2DM is impaired skeletal muscle insulin sensitivity [4,5]. A range of evidence  
7  
8 suggests that insulin resistance in skeletal muscle is induced by increased levels of plasma non-esterified  
9  
10 free fatty acids (NEFAs) [6,7] and/or changes in adipokine levels caused by obesity [8]. It has long been  
11  
12 recognized that elevated plasma NEFA levels cause insulin resistance in humans [9]. The mechanisms  
13  
14 underlying the association between elevated NEFA and insulin resistance are currently unclear, but  
15  
16 accumulating evidence points to a link between enhanced NEFA levels and activation of a chronic low-  
17  
18 level inflammatory process [8,10]. Elevated saturated NEFA can induce inflammation, and thus insulin  
19  
20 resistance, through several mechanisms, including accumulation of fatty acid (FA) derivatives (such as  
21  
22 ceramide and diacylglycerol) due to an increased FA flux in skeletal muscle cells that exceeds their  $\beta$ -  
23  
24 oxidation capacity [11,12], activation of toll-like receptors [13], and endoplasmic reticulum (ER) stress  
25  
26 [14,15]. Of note, all these mechanisms converge in the activation of pro-inflammatory signaling pathways,  
27  
28 including I $\kappa$ B kinase  $\beta$  (IKK- $\beta$ )-nuclear factor (NF)- $\kappa$ B, which has been linked to FA-induced impairment  
29  
30 of insulin action in skeletal muscle [16,17]. Thus, IKK- $\beta$  phosphorylates IRS-1 on serine residues,  
31  
32 attenuating the insulin signaling pathway, whereas once activated, NF- $\kappa$ B regulates the expression of  
33  
34 multiple inflammatory mediators, including interleukin 6 (IL-6), monocyte chemoattractant protein 1  
35  
36 (MCP-1), and tumor necrosis factor  $\alpha$  (TNF- $\alpha$ ), which also contribute to insulin resistance [10]. Recent  
37  
38 evidence also points to a possible defect in mitochondrial function induced by FA overload. For instance,  
39  
40 short-term exposure to high circulating FA impairs the mitochondrial membrane potential [6] and tissue  
41  
42 culture studies demonstrate that palmitate overload induces mitochondrial dysfunction associated with  
43  
44 reduced oxidative capacity [17]. Mitochondrial function is transcriptionally controlled by peroxisome  
45  
46 proliferator-activated receptor  $\gamma$  co-activator 1 $\alpha$  (PGC-1 $\alpha$ ) [18] and plays a critical role in skeletal muscle  
47  
48 metabolic function. Some [19,20] but not all [21] studies indicate a reduction in PGC-1 $\alpha$  expression and or  
49  
50  
51  
52  
53  
54  
55  
56  
57  
58  
59  
60  
61  
62  
63  
64  
65

1  
2 function in the skeletal muscle of prediabetic and diabetic subjects. Collectively, these data indicate a  
3 possible molecular link between elevated circulating FA and the impaired mitochondrial function  
4 sometimes noted in the skeletal muscle of those at risk of T2DM.  
5  
6  
7

8  
9 Interestingly, some Alzheimer's disease (AD) patients exhibit impaired glucose metabolism,  
10 hyperinsulinemia, and insulin resistance [22,23], suggesting that some common pathways may be involved  
11 in the development of both diseases.  $\beta$ -secretase/ $\beta$ -site amyloid precursor protein (APP)-cleaving enzyme 1  
12 (BACE1) is a key enzyme involved in AD that has recently been implicated in insulin-independent glucose  
13 metabolism [24]. APP is first cleaved by either BACE1 or  $\alpha$ -secretase enzyme, generating extracellular  
14 soluble APP $\beta$  (sAPP $\beta$ ) or sAPP $\alpha$ , respectively. Following BACE1 cleavage, the APP C-terminal fragment  
15 C99 can be cleaved by  $\gamma$ -secretase, raising the levels of amyloid- $\beta$  (A $\beta$ ) peptides and leading to amyloid  
16 aggregation and plaque formation [25]. It has been reported that BACE1-deficient mice are protected  
17 against high-fat diet (HFD)-induced glucose intolerance [26], although the mechanisms involved remain  
18 unclear. More recently, it has been shown that inhibition of muscle BACE1 activity increases insulin-  
19 independent glucose uptake and GLUT4 translocation [24]. Of note, the saturated FA palmitate and  
20 ceramide increase BACE1 protein levels in C2C12 myotubes [24], probably by post-translational  
21 stabilization of the protein [27], suggesting that  $\beta$ -secretase might contribute to the effects of saturated  
22 NEFA on inflammation and insulin resistance in skeletal muscle cells. In the present study, we examined  
23 whether BACE1 activity and its product sAPP $\beta$  contribute to insulin resistance in skeletal muscle.  
24  
25  
26  
27  
28  
29  
30  
31  
32  
33  
34  
35  
36  
37  
38  
39  
40  
41  
42  
43  
44  
45  
46  
47  
48  
49  
50  
51  
52  
53  
54  
55  
56  
57  
58  
59  
60  
61  
62  
63  
64  
65

## 2. Materials and Methods

### 2.1. Cell culture

1  
2  
3  
4 Mouse C2C12 myoblasts (ATCC) were maintained in Dulbecco's modified Eagle's medium (DMEM)  
5  
6 supplemented with 10% fetal bovine serum (FBS), 50 units/ml penicillin and 50 mg/ml streptomycin.  
7  
8 When cells reached confluence, the medium was switched to the differentiation medium containing  
9  
10 DMEM and 2% horse serum, which was changed every other day. After 4 additional days, the  
11  
12 differentiated C2C12 cells had fused into myotubes. Lipid-containing media were prepared by conjugation  
13  
14 of non-esterified fatty acids (NEFA) with NEFA-free bovine serum albumin. Briefly, palmitic acid was  
15  
16 dissolved in ethanol and diluted 1:100 in DMEM containing 2% (w/v) NEFA-free bovine serum albumin.  
17  
18 Myotubes were incubated in serum-free DMEM containing 2% bovine serum albumin in either the  
19  
20 presence (palmitate-treated cells) or absence (control cells) of NEFA. Cell viability was assessed using the  
21  
22 **LDH Cytotoxicity Assay Kit from Thermo Scientific (Waltham, MA, USA).**  
23  
24

25  
26  
27 Human LHCN-M2 myoblasts were maintained, grown and differentiated to myotubes as previously  
28  
29 described [28].  
30

### 2.2. Mice

31  
32  
33 Male *Bace1*<sup>-/-</sup> mice and wild-type (WT) littermate controls on the C57Bl6/J background were sacrificed  
34  
35 under isoflurane anesthesia. WT and *Bace1*<sup>-/-</sup> mice were fed a standard diet or a high-fat diet (HFD)  
36  
37 containing, by energy, 45% fat, 20% protein and 35% carbohydrate (catalogue number 58V8, TestDiet®,  
38  
39 Purina Mills) for 20 weeks. Skeletal muscle (gastrocnemius) and epididymal adipose tissue samples were  
40  
41 frozen in liquid nitrogen and then stored at -80°C. For quantification of sAPPβ, plasma and skeletal muscle  
42  
43 were obtained from mice fed a standard diet or a HFD (Research Diets D08061110) for 3 months. For  
44  
45 quantification of sAPPβ and Aβ42, plasma of these mice was concentrated (30 kDa Amicon Ultra 15 ml  
46  
47 filter) by centrifugation and subjected to SDS-PAGE.  
48  
49

50  
51  
52 In a second study male C57BL/6 mice were randomly distributed into two groups (n=6 each) and  
53  
54 intramuscular (gastrocnemius) injection of vehicle (PBS plus 4% urea) or 5 μg of sAPPβ was performed.  
55  
56  
57 Twelve hours later animals were sacrificed and the skeletal muscle gastrocnemius was excised.  
58  
59

1  
2 In a third study male C57BL/6 mice were randomly distributed into two groups (n=6 each) and vehicle or  
3  
4 10 µg of sAPPβ was administered (i.p.) twice (20.00 h and 8.00 h) before starting either a glucose  
5  
6 tolerance test (GTT) or an insulin tolerance test (ITT). In the GTT animals received 2 g/Kg body weight of  
7  
8 glucose by ip injection, and blood was collected from the tail vein after 0, 15, 30, 60 and 120 min. In the  
9  
10 ITT each animal received 0.5 IU/Kg of body weight of insulin.

11  
12 All animal care, experimental protocols and procedures were performed in accordance to the Animal  
13  
14 Scientific Procedures Act (1986), with approval of the University of Barcelona and Dundee ethics  
15  
16 committees.

### 20 **2.3.Subjects**

21  
22 Subjects were recruited by the Endocrinology Department at the University Hospital Joan XXIII  
23  
24 (Tarragona, Spain) in accordance with the Helsinki Declaration (2008). All participants gave their  
25  
26 informed consent and the study was approved by the respective local Ethic Committee review board of the  
27  
28 participating Hospital. Donors were classified as lean or obese based on body mass index (BMI) following  
29  
30 World Health Organization criteria (WHO). T2D subjects were diagnosed according WHO criteria. All  
31  
32 patients had fasted overnight before collection of blood samples. Anthropometric and biochemical  
33  
34 variables from the two cohorts used are presented in Supplementary Tables S1 and S2. All subjects were of  
35  
36 white origin and reported that their body weight had been stable for at least 3 months prior to the study.  
37  
38 They had no systemic disease other than obesity, and all had been free of infection in the previous month  
39  
40 before the study. Primary liver disease, cardiovascular disease, arthritis, acute inflammatory disease,  
41  
42 infectious disease, neoplastic and renal diseases were specifically excluded by biochemical evaluation.  
43  
44 Serum was immediately separated by centrifugation and stored at -80° C until analysis. Subjects were  
45  
46 stratified according to age, gender and BMI. The hospital ethics committee approved the study and  
47  
48 informed consent for biobanking surgically removed tissue was obtained from all participants in  
49  
50 accordance with the Declaration of Helsinki. All patients had fasted overnight before collection of adipose  
51  
52 tissue and blood. Visceral (VAT) and subcutaneous (SAT) adipose tissue was obtained during scheduled  
53  
54 non-acute surgical procedures including laparoscopic surgery for hiatus hernia repair or cholecystectomies.  
55  
56  
57  
58  
59  
60

1  
2  
3  
4  
5  
6  
7  
8  
9  
10  
11  
12  
13  
14  
15  
16  
17  
18  
19  
20  
21  
22  
23  
24  
25  
26  
27  
28  
29  
30  
31  
32  
33  
34  
35  
36  
37  
38  
39  
40  
41  
42  
43  
44  
45  
46  
47  
48  
49  
50  
51  
52  
53  
54  
55  
56  
57  
58  
59  
60  
61  
62  
63  
64  
65

Serum fasting glucose, insulin, triglycerides, total cholesterol and high-density lipoprotein were determined by standard enzymatic methods. Insulin resistance was estimated using homeostasis model assessment index-insulin resistance (HOMA-IR). For clinical and anthropometrical variables, normal distributed data were expressed as mean value $\pm$ SD, and variables with no Gaussian distribution values were expressed as median (25th–75th quartiles). For analysis of expression variables that do not follow a Gaussian distribution, values were analyzed by non-parametrical tests (Kruskal-Wallis). When data were normally distributed, differences in clinical variables, laboratory parameters or expression variables between groups were compared by ANOVA with post hoc Scheffe correction.

Total RNA was extracted from adipose tissue using the RNeasy Lipid Tissue Midi Kit (Qiagen Science, Hilden, Germany). Total RNA quantity was measured at 260 nm and purity was assessed by the OD260/OD280 ratio. One microgram of RNA was reverse transcribed with random primers using the Reverse Transcription System (Applied Biosystems, Foster City, CA). Quantitative gene expression was evaluated by Real-time PCR (qPCR) on a 7900HT Fast Real-Time PCR System using TaqMan Low Density Arrays (Applied Biosystems, micro fluidic cards) (BACE1 Hs01121195\_m1 and PPARGC1A Hs01016719\_m1). Results were calculated using the comparative Ct method (2<sup>-</sup> DD Ct), and expressed relative to the expression of the housekeeping genes cyclophilin 1A (PPIA) (Hs 04194521\_s1) and 18S (Hs 03928985\_g1).

For western blot analysis of sAPP $\beta$  in human serum samples, serum albumin and the major subclasses of gamma globulin (IgG) were removed using Amicon Ultra-0.5 centrifugal Filter devices (Millipore) following Pierce Albumin/IgG Removal Kit (Pierce Biotechnology, Boston, MA).

#### 2.4. RNA preparation and quantitative Real-Time RT-PCR

The relative levels of specific mRNAs were assessed by Real Time RT-PCR, as previously described [28]. Primer sequences used are displayed in supplemental Table S3.

## 2.5. Immunoblotting

1 Isolation of total and nuclear extracts was performed as described elsewhere [28]. Western blot analysis  
2 was performed using antibodies against total and phospho-Akt (Ser<sup>473</sup>), adenylate cyclase, BACE1, **CHOP**,  
3 total and phospho-CREB (Ser<sup>133</sup>), total and phospho-eIF2 $\alpha$ , GRP78/BiP, insulin receptor  $\beta$ -subunit  
4 (IR $\beta$ ), **NRF1**, total and phospho-PKA (Thr<sup>197</sup>), **total and p-STAT3** (Tyr<sup>705</sup>) (Cell Signaling Technology  
5 Inc., Danvers, MA), OXPHOS (Mito Sciences, Eugene, OR), A $\beta$ 42 (Biolegend), sAPP $\beta$  (Covance,  
6 Alnwick, UK), PGC-1 $\alpha$  (Abcam, Cambridge, United Kingdom), GAPDH, I $\kappa$ B $\alpha$ , lamin B, Oct-1, p65,  
7 PPAR $\alpha$ , PPAR $\beta/\delta$ , prohibitin (Santa Cruz), total and phospho-IRS-1 (Ser<sup>307</sup>) (Millipore, Billerica, MA)  
8 and  $\beta$ -actin (Sigma, St. Louis, MO). Detection was achieved using the Western Lightning® Plus-ECL  
9 chemiluminescence kit (PerkinElmer, Waltham, MA). The equal loading of proteins was assessed by  
10 Ponceau S staining. The size of detected proteins was estimated using protein molecular-mass standards  
11 (Bio-Rad, Hercules, CA). For validation, we used a protein marker (Precision Plus Protein Dual Color  
12 Standards 1610374; Bio-Rad, Hercules, CA, USA), on the same blots. All of these commercially available  
13 antibodies showed a single distinct band at the molecular weight indicated in the datasheets.  
14  
15  
16  
17  
18  
19  
20  
21  
22  
23  
24  
25  
26  
27  
28  
29  
30  
31  
32  
33

## 2.6. Electrophoretic mobility shift assay (EMSA)

34 The electrophoretic mobility shift assay (EMSA) was performed as previously described [28].  
35  
36  
37  
38  
39  
40  
41

## 2.7. Fatty acid oxidation (FAO) assay

42 Total FAO was measured as previously described [29].  
43  
44  
45  
46  
47  
48

## 2.8. Protein kinase A (PKA) activity and cAMP levels

49 Commercial kits were used to assess PKA activity (Enzo Life Sciences, Farmingdale, NY) and cAMP  
50 levels (Biovision, Milpitas, CA).  
51  
52  
53  
54

## 2.9. Deoxy-D-glucose, 2-[1,2-<sup>3</sup>H(N)] uptake experiments

1  
2  
3  
4  
5  
6  
7  
8  
9  
10  
11  
12  
13  
14  
15  
16  
17  
18  
19  
20  
21  
22  
23  
24  
25  
26  
27  
28  
29  
30  
31  
32  
33  
34  
35  
36  
37  
38  
39  
40  
41  
42  
43  
44  
45  
46  
47  
48  
49  
50  
51  
52  
53  
54  
55  
56  
57  
58  
59  
60  
61  
62  
63  
64  
65

Cells were starved for 24 h and washed twice with HEPES buffer (20 mmol/l HEPES [pH 7.4], 140 mmol/l NaCl, 2.5 mmol/l MgSO<sub>4</sub>, 5 mmol/l KCl, 1 mmol/l CaCl<sub>2</sub>). Cells were preincubated with HEPES buffer for 1 h and incubated for 30 min in the presence or absence of 100 nmol/l insulin, followed by treatment with deoxy-D-glucose,2-[1,2-<sup>3</sup>H(N)] (37,000 Bq/ml; Amersham Biosciences) for 20 min. The uptake was stopped by adding 10 μmol/l cytochalasin B. After washing with ice-cold 0.9% NaCl three times, cells were lysed with 0.1 mol/l NaOH. Non-specific uptake was measured in the presence of 10μmol/l cytochalasin B and was subtracted from all the values.

#### 2.10. Pyruvate tolerance test (PTT)

For PTT analysis, mice were fasted for 15 h and intraperitoneally injected with pyruvate (2 g /Kg). Blood was taken from tail vein at 0, 15, 30, 45, 60, 75, 90, 105, and 120 min after pyruvate injection and blood glucose was measured with a glucometer.

#### 2.11. Statistical Analyses

Results were normalised to levels in control groups and are expressed as means ± S.D. Significant differences were established by either the Student's t test or one-way and two-way ANOVA, according to the number of groups compared, using GraphPad Prism software (GraphPad Software Inc. V4.03, San Diego, CA). When significant variations were found by two-way ANOVA, the Tukey-Kramer multiple comparison post-test was performed. Differences were considered significant at P<0.05.

### 3. Results

#### 3.1. Palmitate increases *Bace1* expression through an NF- $\kappa$ B-dependent mechanism

It has been previously reported that palmitate treatment increases BACE1 protein levels in C2C12 myotubes through post-translational stabilization of BACE1 protein caused by palmitate and ceramide [24,27]. However, it was unknown whether transcriptional mechanisms were involved. Interestingly, palmitate increased *Bace1* mRNA levels in C2C12 myotubes (Figure 1A). Since palmitate increases NF- $\kappa$ B activity in myotubes [12] and *Bace1* is under the transcriptional control of NF- $\kappa$ B [30], we evaluated whether palmitate-induced NF- $\kappa$ B activation was responsible for the increase in *Bace1* expression by using the NF- $\kappa$ B inhibitor parthenolide [31]. Parthenolide prevented the palmitate-induced increase in *Bace1* mRNA levels (Figure 1B), suggesting that palmitate increases its expression by activating NF- $\kappa$ B. Therefore, the observed increase in BACE1 protein levels following palmitate exposure (Figure 1C) might be the result of the reported post-translational stabilization of BACE1 protein [24,27], but also of *Bace1* increased expression. When mice were fed a HFD we also observed an increase in the mRNA and protein levels of BACE1 in the skeletal muscle and white adipose tissue of these mice compared to those fed a standard diet (Figure 1D-G), suggesting that the transcriptional mechanism may also operate *in vivo*.

#### 3.2. BACE1 inhibition prevents palmitate-induced ER stress, inflammation, and insulin resistance

Next, we hypothesized that BACE1 might contribute to some of the deleterious effects of palmitate, including ER stress, inflammation, and insulin resistance. To elucidate this, we used the BACE1 inhibitor Merck-3 (M3), reported to inhibit BACE1 activity in C2C12 cells [24,27]. M3 treatment significantly attenuated the palmitate-mediated increase in the expression of ER stress markers (*sXbp1*, *Atf3*, *Chop*, and *Bip*) (Figures 2A and B). Given the association of ER stress with inflammation and insulin resistance [15], we also evaluated the effect of M3 on palmitate-induced *Tnf- $\alpha$*  and *Il-6* expression. The increase in *IL-6* and *Tnf- $\alpha$*  expression caused by palmitate was significantly blunted in the presence of M3 (Figure 2B). As expected, palmitate exposure reduced protein levels of the NF- $\kappa$ B inhibitor I $\kappa$ B $\alpha$ , whereas in the presence of palmitate plus M3, this reduction was blunted (Figure 2C). Consistent with this, the nuclear protein

1  
2 levels of the NF- $\kappa$ B subunit p65 were raised by palmitate, but this increase was abolished when cells were  
3 co-incubated with the FA and M3 (Figure 2C). Likewise, NF- $\kappa$ B DNA-binding activity increased (complex  
4 I) in nuclear extracts from palmitate-exposed cells, whereas the binding activity in cells co-incubated with  
5 palmitate and M3 was similar to that observed in control cells (Figure 2D).  
6

7  
8 When we evaluated the insulin signaling pathway, we observed that, in agreement with a previous study  
9 reporting that ER stress reduced insulin receptor (IR) levels in adipocytes [32], protein levels of IR $\beta$  were  
10 reduced in palmitate-exposed cells, which was prevented by M3 (Figure 2E). In line with activation of the  
11 NF- $\kappa$ B pathway, IRS1 phosphorylation at Ser<sup>307</sup> was increased in palmitate-exposed cells and this was  
12 blocked by M3 (Figure 2E). Finally, palmitate reduced insulin-stimulated Akt phosphorylation, whereas  
13 this reduction was reversed in cells co-incubated with palmitate and M3 (Figure 2F).  
14  
15  
16  
17  
18  
19  
20  
21  
22  
23  
24

### 25 **3.3. BACE1 inhibition prevents the reduction in Pgc-1 $\alpha$ expression caused by palmitate**

26  
27 PGC-1 $\alpha$  regulates the activity of several transcription factors that control the expression/function of genes  
28 involved in FAO, including PPAR $\alpha$  and PPAR $\beta/\delta$  [33]. Since palmitate increases BACE1 protein levels  
29 and we reported that this FA reduces the expression of *Pgc-1 $\alpha$*  [12], we next evaluated whether BACE1  
30 inhibition prevented the reduction in *Pgc-1 $\alpha$*  levels. Palmitate caused a reduction in *Pgc-1 $\alpha$*  mRNA levels  
31 that was prevented by M3 (Figure 2G). Similarly, PGC-1 $\alpha$  protein levels showed a significant reduction in  
32 palmitate-exposed cells, but this reduction was not observed when cells were co-incubated with palmitate  
33 plus M3 (Figure 2H). In agreement with these changes, palmitate induced a reduction in the mRNA and  
34 protein levels of PPAR $\alpha$  and PPAR $\beta/\delta$ , which in turn regulate *Pgc-1 $\alpha$*  expression [34], but their levels  
35 were restored in cells co-incubated with palmitate plus M3 (Figure 2G and H). The expression of PPAR-  
36 target genes such as *Acox*, *Cpt-1 $\alpha$*  and *Mcad*, as well as *I $\kappa$ B $\alpha$* , which is also under the transcriptional  
37 control of PPAR $\alpha$  [35], were reduced by palmitate (with the exception of *Cpt-1 $\alpha$* ) and restored when cells  
38 were incubated with the FA plus M3 (Figure 2I). Given that PGC-1 $\alpha$  regulates PPAR $\alpha$  transcriptional  
39 activity [36], we assessed the DNA-binding activity of this transcription factor by performing EMSA.  
40 PPAR $\alpha$  DNA-binding activity (complex I) was reduced by palmitate, in agreement with the reduction in  
41  
42  
43  
44  
45  
46  
47  
48  
49  
50  
51  
52  
53  
54  
55  
56  
57  
58  
59  
60  
61  
62  
63  
64  
65

PGC-1 $\alpha$  protein levels, whereas this reduction was partially prevented in cells co-incubated with palmitate and M3 (Figure 2J). It is worth pointing out that incubation of the cells only with the M3 compound significantly increased mRNA levels of *Ppar $\alpha$* , *Ppar $\beta/\delta$* , *Pgc-1 $\alpha$* , and the PPAR-target gene *Cpt-1 $\alpha$*  (Supplementary Figure 1A), suggesting that basal expression of these genes may be repressed by BACE1 activity.

### 3.4. Bace1 knockdown increases PGC-1 $\alpha$ in myotubes and skeletal muscle

To clearly demonstrate that BACE1 modulates PGC-1 $\alpha$ , we used genetic approaches. Knockdown of *Bace1* by siRNA transfection in C2C12 cells (Supplementary Figure 1B and C) led to a significant increase in the expression and the protein levels of PGC-1 $\alpha$ , PPAR $\alpha$ , and PPAR $\beta/\delta$  (Figure 3A and B). In addition, expression of the PPAR-target genes *Cpt-1 $\alpha$* , *Acox* and *Mcad* was significantly increased by *Bace1* knockdown, whereas expression of *Chop*, *Tnf- $\alpha$* , and *Mcp-1* were reduced (Figure 3C). Moreover, I $\kappa$ B $\alpha$  and IR $\beta$  protein levels were also increased, whereas phospho-IRS1 (Ser<sup>307</sup>) levels were decreased (Figure 3D). In agreement with this, a significant increase in PGC-1 $\alpha$  expression and protein levels in skeletal muscle from *Bace1*-deficient mice was observed (Figures 3E and F). Moreover, PPAR $\alpha$  and PPAR $\beta/\delta$  expression and protein levels were also enhanced. Likewise, the expression of *I $\kappa$ b $\alpha$* , *Cpt-1 $\alpha$* , *Acox*, and *Mcad* was increased in *Bace1*-deficient mice, whereas *Mcp-1*, *Tnf- $\alpha$* , and *Chop* expression was decreased compared with wild-type littermates (Figure 3G). Similarly, the protein levels of I $\kappa$ B $\alpha$  and IR $\beta$  were increased in the skeletal muscle of *Bace1*-deficient mice compared with wild-type littermates, whereas phospho-eIF2 $\alpha$ , which induces *Chop* levels, and phospho-IRS1 (Ser<sup>307</sup>) were decreased (Figure 3H).

### 3.5. Bace1 knockdown prevents the reduction in PGC1 $\alpha$ expression and the inflammatory process caused by a HFD in skeletal muscle

When we evaluated the effects of a HFD in the skeletal muscle of wild-type and BACE1-deficient mice, a reduction in *Pgc-1 $\alpha$*  expression was observed in wild-type mice fed a HFD, but the increase in the expression of this co-activator displayed in BACE1<sup>-/-</sup> mice prevented the reduction in *Pgc-1 $\alpha$*  mRNA levels

1 when these mice were fed a HFD (Figure 3I). Consistent with the reduction in *Pgc-1α* expression, *Ppara*  
2 mRNA levels were also down-regulated in the skeletal muscle of wild-type mice fed a HFD, whereas this  
3 reduction was prevented in BACE1<sup>-/-</sup> mice fed the HFD. Likewise, the HFD reduced *Iκbα* expression,  
4 whereas that of *Tnf-α* and *Il-6* was increased in wild-type mice and these changes were prevented in  
5 BACE1-deficient mice fed a HFD (Figure 3I).  
6  
7  
8  
9

### 10 11 12 13 **3.6. sAPPβ mimics the effects of palmitate**

14 BACE1 cleaves APP releasing sAPPβ, which we hypothesized might be responsible for the effects caused  
15 by BACE1 in palmitate-exposed cells. sAPPβ concentration was selected after performing curve-  
16 concentration studies (Supplementary Figures 1D-G). sAPPβ caused a reduction similar to that caused by  
17 palmitate in *Pgc-1α* mRNA (Figure 4A) and protein levels (Figure 4B). In agreement with this, the mRNA  
18 levels of *Ppara* and *Pparβ/δ* and several of their target genes involved in FAO, including *Cpt-1α*, *Acox*  
19 and *Mcad* were decreased by sAPPβ (Figure 4A). The effect of sAPPβ on the expression of these genes  
20 differed from that of palmitate only in the case of *Cpt-1α* expression. No changes were observed in the  
21 expression levels of *Cpt-1α*, *Acox*, *Mcad* and *Pparβ/δ* when myotubes were exposed to sAPPα, whereas,  
22 in contrast to sAPPβ, *Pgc-1α* and *Ppara* expression was increased (Supplementary Figure 2A). Consistent  
23 with the reported regulation of mitochondrial oxidative phosphorylation (OXPHOS) genes by PGC-  
24 1α [37], palmitate and sAPPβ reduced the protein levels of complexes I, II, III, IV and V (Figure 4C). In  
25 addition, sAPPβ elicited a significant increase in the expression of *Atf3*, *Chop*, *Tnf-α*, and *IL-6*, whereas  
26 IκBα expression was reduced (Figure 4D). Likewise, sAPPβ caused an increase in nuclear p65 protein  
27 levels, a reduction in IRβ, an increase in phospho-IRS1 (Ser<sup>307</sup>) and a consequent reduction in insulin-  
28 stimulated Akt phosphorylation, identical to that observed for palmitate (Figures 4E-H). No changes were  
29 observed in the expression or protein levels of ER stress and inflammation markers following sAPPα  
30 treatment (Supplementary Figures 2B and C). Consistent with the reduction in the attenuation of the insulin  
31 signaling pathway, sAPPβ also reduced insulin-stimulated glucose uptake, whereas sAPPα did not (Figure  
32 4I). Since our findings indicate that BACE1 activity and sAPPβ regulate the expression of genes involved  
33  
34  
35  
36  
37  
38  
39  
40  
41  
42  
43  
44  
45  
46  
47  
48  
49  
50  
51  
52  
53  
54  
55  
56  
57  
58  
59  
60  
61  
62  
63  
64  
65

1  
2 in FAO, we next determined whether the changes in the expression of these genes affected FAO in  
3 myotubes exposed to palmitate in the presence or absence of M3 and to sAPP $\beta$ . Palmitate significantly  
4 reduced FAO and this effect was blunted by co-incubation with M3, while sAPP $\beta$  caused a reduction in  
5 FAO similar to that observed for palmitate (Figure 4J).  
6  
7  
8  
9

### 10 **3.7. BACE1 expression and plasma sAPP $\beta$ levels are increased in type 2 diabetic patients**

11  
12 Next, we explored whether the relationship between BACE1 and PGC-1 $\alpha$  was also observed in humans. In  
13 subcutaneous white adipose tissue (WAT) *BACE1* expression was increased in obese and especially in type  
14 2 diabetic patients compared with lean subjects (Figure 5A). Interestingly, this increase was accompanied  
15 by a reduction in *PGC-1 $\alpha$*  mRNA levels. These changes were not observed in visceral WAT, where the  
16 expression of BACE1 was higher than in subcutaneous WAT (Supplementary Figures 2D). Interestingly,  
17 mice fed a HFD exhibited higher plasma sAPP $\beta$  levels compared to mice fed a standard diet, whereas no  
18 changes were observed in A $\beta$ 42 (Figure 5B). In humans, although no changes were observed between  
19 obese and lean subjects (Figure 5C), a significant increase was observed in plasma sAPP $\beta$  levels from type  
20 2 diabetic patients compared with obese non-diabetic subjects (Figure 5D). Interestingly, a unique  
21 intramuscular injection of sAPP $\beta$  in gastrocnemius muscle resulted in an increase in the expression of  
22 *Chop* and *Atf3*, whereas *BiP* levels were not affected (Figure 5E). sAPP $\beta$  also upregulated *Tnf $\alpha$*  and *Il-6*  
23 expression (Figure 5F), whereas a reduction in *Pgc-1 $\alpha$*  and *Ppara* mRNA levels was observed (Figure 5G).  
24 Likewise, PGC-1 $\alpha$  and I $\kappa$ B $\alpha$  protein levels were decreased in skeletal muscle following *in situ*  
25 administration of sAPP $\beta$ , while phospho-eIF2 $\alpha$  and BiP protein levels were enhanced (Figure 5H).  
26  
27  
28  
29  
30  
31  
32  
33  
34  
35  
36  
37  
38  
39  
40  
41  
42  
43  
44  
45  
46  
47  
48

### 49 **3.8. sAPP $\beta$ administration to mice induces ER stress, inflammation and reduces PGC-1 $\alpha$**

50  
51 Surprisingly, intraperitoneal acute administration of sAPP $\beta$  (10  $\mu$ g/mouse) before (20.00 h) and after (8.00  
52 h) an overnight fasting to conduct a GTT resulted in a reduction in blood glucose levels (Figure 6A) and  
53 decreased the AUC of plasma glucose levels in the GTT (Figure 6B). In contrast, the AUC of plasma  
54 glucose levels was increased by sAPP $\beta$  in the ITT, indicating a reduction in insulin sensitivity (Figure 6B).  
55  
56  
57  
58  
59  
60  
61  
62  
63  
64  
65

1 sAPP $\beta$  administration caused an increase in the plasma levels of this peptide (Supplementary Figure 2E)  
2 similar to that caused by HFD and this led to upregulation of *Atf3*, *Tnf $\alpha$*  and *IL-6* expression in skeletal  
3 muscle, whereas no significant changes were observed in *BiP* and *Chop* (Figure 6C). Consistent with the  
4 increased expression of inflammatory markers, the protein levels of I $\kappa$ B $\alpha$  were decreased by sAPP $\beta$   
5 administration, whereas BiP protein abundance was increased (Figure 6D). sAPP $\beta$  administration also  
6 reduced *Pgc-1 $\alpha$*  expression and protein levels and the mRNA abundance of *Ppara* in skeletal muscle  
7 (Figures 6E-F). Consistent with the reduction in insulin sensitivity suggested by the ITT, IR $\beta$  protein  
8 abundance was reduced and the levels of phospho-IRS1 (Ser<sup>307</sup>) were enhanced by sAPP $\beta$  in skeletal  
9 muscle (Figure 6G). In epididymal white adipose tissue we observed similar changes to those reported in  
10 skeletal muscle following sAPP $\beta$  treatment (Supplementary Figure 2H). Given the discrepancy between  
11 the GTT and the ITT, we examined sAPP $\beta$  effects in liver. Hepatic *Pgc-1 $\alpha$* , *Ppara* and *Ikb $\alpha$*  expression,  
12 protein levels of PGC-1 $\alpha$  and of its downstream transcription factor, nuclear respiratory factor 1 (NRF-1),  
13 and proteins of the insulin signaling pathway, were reduced by sAPP $\beta$  (Figure 6H-J). In contrast, *Bip*,  
14 *Chop* and *Tnf $\alpha$*  expression was upregulated (Figure 6H). PGC-1 $\alpha$  promotes hepatic gluconeogenesis by  
15 regulating the expression of rate-limiting gluconeogenic genes such as PEPCCK and G6Pase [38] and in  
16 agreement with the reduction in plasma glucose levels and in hepatic *Pgc-1 $\alpha$*  expression in mice treated  
17 with sAPP $\beta$ , these mice also exhibit a reduction in hepatic *Pepck* and *G6Pase* expression (Figure 6H). To  
18 clearly demonstrate that sAPP $\beta$  affects gluconeogenesis in liver we performed a PTT. As shown in Figure  
19 6K, sAPP $\beta$  repressed glucose synthesis from pyruvate.

### 3.9. BACE1 regulates CREB phosphorylation

46 Next, we focused on the potential mechanisms by which BACE1 and sAPP $\beta$  regulate the expression of  
47 *Pgc-1 $\alpha$* , since its reduction seems to be the main step driving the changes caused by palmitate-induced up-  
48 regulation of  $\beta$ -secretase. *Pgc-1 $\alpha$*  expression is regulated by the transcription factor CREB [39,40]. CREB  
49 is activated following phosphorylation at Ser<sup>133</sup> by PKA, which is allosterically activated by cAMP [41].  
50 Phosphorylated CREB then interacts with the transcription co-activator CREB-binding protein to initiate

1 the transcription and translation of CREB-target genes, such as *Pgc-1 $\alpha$*  [33]. Of note, it has previously  
2 been reported that elevated BACE1 protein levels reduce CREB phosphorylation, PKA activity, and cAMP  
3 levels in neuroblastoma cells and rat primary cortical neurons, contributing to memory and cognitive  
4 deficits typical of AD [42]. We hypothesized that palmitate-induced BACE1 protein levels might affect  
5 CREB phosphorylation, leading to decreased *Pgc-1 $\alpha$*  expression, which contributes to reduce FAO,  
6 thereby exacerbating inflammation and insulin resistance. First, we examined whether BACE1 inhibition  
7 and sAPP $\beta$  affected the PKA/CREB pathway. Exposure to palmitate and sAPP $\beta$  reduced phospho-CREB  
8 (Ser<sup>133</sup>) levels, whereas the reduction caused by palmitate was prevented by pre-treatment with M3  
9 (Figures 7A and B). Consistent with this, increased levels of phospho-CREB were observed following  
10 *Bace1* knockdown in myotubes and in skeletal muscle of BACE1<sup>-/-</sup> mice (Figures 7C and D). Exposure to  
11 palmitate reduced phospho-protein levels (Thr<sup>197</sup>) of the catalytic subunit of PKA (Figure 7E), which is  
12 required for full catalytic activity of this kinase [43], and this reduction was blunted by M3. sAPP $\beta$  caused  
13 a stronger reduction in phospho-PKA protein levels than that observed for palmitate (Figure 7F). Likewise,  
14 *Bace1* knockdown in myotubes and BACE1-deficiency in skeletal muscle resulted in increased levels of  
15 phospho-PKA (Figure 7G and H). In addition, PKA activity was reduced following exposure to sAPP $\beta$  and  
16 palmitate, the latter being reversed by pre-treatment with M3 (Figure 7I). Finally, cells exposed to  
17 palmitate and sAPP $\beta$  also showed a reduction in cAMP levels, whereas M3 pre-treatment prevented the  
18 reduction caused by the FA (Figure 7J). Moreover, Chen et al. [42] demonstrated that BACE1 may also  
19 reduce the cAMP/PKA/CREB pathway by interacting with adenylate cyclase. To examine whether  
20 palmitate affects the interaction between BACE1 and adenylate cyclase, we performed protein co-  
21 immunoprecipitation. In agreement with the increase in protein levels caused by palmitate, this FA raised  
22 the interaction between adenylate cyclase and BACE1, whereas this increase was prevented in cells  
23 exposed to palmitate plus M3 (Figure 7K).

24 We then examined whether sAPP $\beta$  also affected the interaction between BACE1 and AC. Interestingly,  
25 mice treated with sAPP $\beta$  showed an increase in the protein levels of BACE1 in skeletal muscle (Figure  
26 8A), suggesting that it has a similar effect to that shown for palmitate. In addition, sAPP $\beta$  enhanced the

1 expression of *Bace1* and reduced the mRNA levels of *Pgc-1α* in C2C12 myotubes and these changes were  
2 prevented by the NF-κB inhibitor parthenolide, suggesting that they were dependent on the activation of  
3 this transcription factor (Figure 8B). Likewise, the protein levels of both BACE1 and PGC-1α showed the  
4 same behavior (Figure 8C). Finally, co-immunoprecipitation studies demonstrated that C2C12 myotubes  
5 exposed to sAPPβ showed enhanced interaction between BACE1 and AC and that this interaction was  
6 prevented by parthenolide (Figure 8D). Moreover, this interaction was also increased in the skeletal muscle  
7 of mice treated with sAPPβ (Figure 8E).

#### 18 4. Discussion

19 The findings of the present study indicate that the increase in BACE1 levels caused by palmitate can  
20 contribute to lipid-induced ER stress, inflammation, and insulin resistance in skeletal muscle cells and  
21 these effects can be attenuated by BACE1 inhibition. Our findings demonstrate that the BACE1 product  
22 sAPPβ mimicked most of the effects of palmitate. This is the first time these network interactions have  
23 been demonstrated and add an important dimension to the mechanisms driving insulin resistance.

24 The changes caused by palmitate and sAPPβ might be the result of the reduction in PGC-1α. Furthermore,  
25 the effects observed in skeletal muscle from *Bace1*-deficient mice confirmed that BACE1 contributes to  
26 reduce PGC-1α levels. This transcriptional co-activator preserves OXPHOS genes [37] and co-activates  
27 and increases the expression of transcription factors involved in FAO, such as PPARα and PPARβ/δ  
28 [33,34]. Therefore, the reduction in PGC-1α levels caused by palmitate and sAPPβ may reduce FAO,  
29 increasing the amount of palmitate available and ultimately exacerbating ER stress, inflammation, and  
30 insulin resistance. In addition, PGC-1α has a role in inflammation in skeletal muscle. For instance, PGC-  
31 1α knockout mice show higher basal mRNA expression of *Tnf-α* and *Il-6* in skeletal muscle compared with  
32 wild-type mice [44-46].

1  
2 Although it has been reported that A $\beta$ 42 induces hepatic insulin resistance by activating the  
3 JAK2/STAT3/SOCS1 pathway [47], we did not observe changes in these pathway in C2C12 myotubes  
4 exposed to sAPP $\beta$  or in mice treated with this peptide (Supplementary Figure 3).  
5  
6

7  
8  
9 On the other hand, despite it has been previously reported that PGC-1 $\alpha$  regulates *Bace1* promoter in  
10 neurons [48], in myotubes this mechanism does not seem operate, since when *Pgc-1 $\alpha$*  was overexpressed  
11 in human LHCN-M2 cells, no changes were observed in the expression of *Bace1* (Supplementary Figure  
12 4). On the other hand, CREB binding to the PGC-1 $\alpha$  promoter plays a key role in activating *PGC-1 $\alpha$*   
13 expression in skeletal muscle [33], and a previous study reported that BACE1 reduces CREB  
14 phosphorylation in neurons [42]. In addition, CREB is phosphorylated by PKA following activation by  
15 cAMP. Our findings suggest that BACE1 activity down-regulates PGC-1 $\alpha$  levels by attenuating the cAMP-  
16 PKA-CREB pathway. In neurons, there are conflicting results about whether the effects of BACE1 on the  
17 cAMP/PKA/CREB pathway are dependent on its enzymatic activity and A $\beta$  levels [42,49]. Tong et al. [49]  
18 reported that A $\beta$ -(1-42) suppressed CREB phosphorylation in cortical neurons. In contrast, Chen et al. [42]  
19 demonstrated that enhanced BACE1 levels reduced CREB phosphorylation, PKA activity, and cAMP  
20 content in neurons and mouse brains, and that these effects were independent of BACE1 activity and A $\beta$   
21 levels. These latter authors reported that BACE1 interacts via its transmembrane domain with adenylate  
22 cyclase to inactivate the cAMP/PKA/CREB pathway. Our findings also show that palmitate exposure,  
23 likely as the result of the increase in BACE1 protein levels, enhances its interaction with adenylate cyclase,  
24 a mechanism that may also contribute to reduce cAMP levels, as previously reported [42]. **Although it has  
25 been reported that endogenous carnitine stores in L6 myotubes are low [50] and this may lead to cytotoxic  
26 responses of the myocytes when incubated for 24 with palmitate alone, we did not observe differences in  
27 cell viability or in some of the parameters analyzed in the absence or in the presence of carnitine for 16 h  
28 (Supplementary Figure 5).**  
29  
30  
31  
32  
33  
34  
35  
36  
37  
38  
39  
40  
41  
42  
43  
44  
45  
46  
47  
48  
49  
50  
51  
52  
53  
54  
55  
56  
57  
58  
59  
60  
61  
62  
63  
64  
65

1  
2 The levels of sAPP $\beta$  were increased in plasma of mice fed a HFD, which is consistent with the reported  
3 increase in myotubes incubated with the FA-derivative ceramide [24], whereas the levels of A $\beta$ -42 were  
4 not altered. In humans we found that *BACE1* expression was increased in the subcutaneous WAT of obese  
5 and, especially in type 2 diabetic patients compared with lean subjects and this increase was accompanied  
6 by a reduction in *PGC-1 $\alpha$*  mRNA levels. In agreement with the increase in BACE1 expression in  
7 subcutaneous WAT, sAPP $\beta$  plasma levels were also enhanced in obese type 2 diabetic patients compared  
8 with obese non-diabetic subjects. The lack of increase in obese subjects compared with lean subjects  
9 suggests that the increase in the levels of plasma sAPP $\beta$  might be associated with the transition from  
10 obesity to T2DM. Acute administration of sAPP $\beta$  to mice elicited similar effects to those observed *in vitro*,  
11 causing an upregulation of the markers of ER stress, inflammation and insulin resistance in skeletal muscle.  
12  
13 Interestingly, our findings show that sAPP $\beta$  mimics the effects of palmitate and both increase the levels of  
14 BACE1 through an NF- $\kappa$ B-dependent mechanism. In fact, it has been reported that NF- $\kappa$ B increases  
15 BACE1 expression by promoter transactivation [30]. Moreover, inhibition of NF- $\kappa$ B prevented the  
16 interaction between BACE1 and AC. Therefore, these data suggest that palmitate and sAPP $\beta$  increase the  
17 protein levels of BACE1 and as a result of this increase BACE1 binds and inhibits the activity of AC,  
18 ultimately leading to the reduction of the cAMP-PKA-CREB pathway and the reduction in *Pgc-1 $\alpha$*   
19 expression (Figure 8E).  
20  
21  
22  
23  
24  
25  
26  
27  
28  
29  
30  
31  
32  
33  
34  
35  
36  
37  
38  
39  
40  
41

42 Mice treated with sAPP $\beta$  showed a reduction in insulin sensitivity in the ITT, but surprisingly, plasma  
43 glucose levels were reduced by sAPP $\beta$  administration. **No significant changes were observed in insulin**  
44 **levels during the GTT (Supplementary Figure 6).** In liver, PGC-1 $\alpha$  promotes hepatic gluconeogenesis [43],  
45 and sAPP $\beta$  reduced hepatic PGC-1 $\alpha$  levels and the expression of genes regulated by this transcriptional co-  
46 activator involved in gluconeogenesis. Since PGC-1 $\alpha$  has opposite effects on hepatic and muscle insulin  
47 sensitivity [51], and gluconeogenesis strongly contributes to sustain plasma glucose levels under fasting  
48 conditions, for instance when glycogen stores are low after an overnight fast, the net result of a decrease in  
49 PGC-1 $\alpha$  levels following sAPP $\beta$  treatment is a reduction in plasma glucose levels.  
50  
51  
52  
53  
54  
55  
56  
57  
58  
59  
60

1  
2 On the basis of our findings, we propose that BACE1 and its product sAPP $\beta$  contribute to lipid-induced  
3  
4 ER stress, inflammation, and insulin resistance in skeletal muscle, and that targeting BACE1 may provide a  
5  
6 new therapeutic option for the prevention and treatment of insulin resistance and T2DM.  
7  
8  
9

## 10 11 12 13 14 15 16 **Funding**

17  
18 This study was partly supported by funds from the Spanish Ministerio de Economía y Competitividad  
19  
20 (SAF2012-30708 and SAF2015-64146-R to MVC, SAF2013-45887-R to LH, SAF2014-52223-C2-1-R to  
21  
22 DS, SAF2015-65019-R to SFV and PI14/00228 to JV), the Generalitat de Catalunya (2014SGR-13 to  
23  
24 MVC and 2014SGR465 to DS), Diabetes UK Grants (Grant nos. 08/0003681 and 12/0004458 to MLJA),  
25  
26 European Union ERDF funds, and the European Foundation for the Study of Diabetes (EFSD)/Janssen-  
27  
28 Rising Star and L'Oréal-UNESCO "For Women in Science" research fellowships to LH. CIBER de  
29  
30 Diabetes y Enfermedades Metabólicas Asociadas (CIBERDEM) is an Instituto de Salud Carlos III project  
31  
32 (Grant CB07/08/0003 to MVC and CB07/08/0012 to JV). CIBER Fisiopatología de la Obesidad y la  
33  
34 Nutrición (CIBEROBN) (Grant CB06/03/0001 granted to DS). GB was supported by a FPI grant from the  
35  
36 Spanish Ministerio de Economía y Competitividad. SFV acknowledges support from the Miguel Servet  
37  
38 tenure-track program (CP10/00438 and CPII16/00008) from the Fondo de Investigación Sanitaria (FIS) co-  
39  
40 financed by the ERDF. We would like to thank the University of Barcelona's Language Advisory Service  
41  
42 for revising the manuscript.  
43  
44  
45  
46  
47  
48

## 49 **Conflicts of Interest**

50  
51  
52  
53 The authors have no conflicts of interest associated with this manuscript.  
54  
55  
56  
57  
58  
59

## Author's contribution

1  
2  
3 GB, LS, AG, AMGF, DLH, SFV, PJM, GM, MLJA, MCD, DS, LH, EB, XP and MVC processed the  
4  
5 samples, analyzed and prepared the data, and were involved in drafting the article. GB, AG, GM, MLJA,  
6  
7 SFV, JV, DS, LH, and XP contributed to data interpretation and revised the article. MVC designed the  
8  
9 experiments, interpreted the data, and was primarily responsible for writing the manuscript. All authors  
10  
11 approved the final version of the manuscript.  
12  
13  
14  
15  
16  
17

## References

- 18  
19  
20  
21 1. DeFronzo RA, Gunnarsson R, Björkman O, Olsson M, Wahren J. Effects of insulin on peripheral  
22 and splanchnic glucose metabolism in noninsulin-dependent (type II) diabetes mellitus. *J Clin*  
23 *Invest* 1985;76:149-155.
- 24 2. Kelley DE, Goodpaster BH, Storlien L. Muscle triglyceride and insulin resistance. *Annu Rev Nutr*  
25 2002;22:325-346.
- 26 3. Abdul-Ghani MA, DeFronzo RA. Pathogenesis of insulin resistance in skeletal muscle. *J Biomed*  
27 *Biotechnol* 2010;476279.
- 28 4. Savage DB, Petersen KF, Shulman GI. Disordered lipid metabolism and the pathogenesis of insulin  
29 resistance. *Physiol Rev* 2007;87:507-520.
- 30 5. Rothman DL, Magnusson I, Cline G, Gerard D, Kahn CR, Shulman RG, Shulman GI. Decreased  
31 muscle glucose transport/phosphorylation is an early defect in the pathogenesis of non-insulin-  
32 dependent diabetes mellitus. *Proc Natl Acad Sci U S A* 1995;92:983-987.
- 33 6. Daniele G, Eldor R, Merovci A, Clarke GD, Xiong J, Tripathy D, Taranova A, Abdul-Ghani M,  
34 DeFronzo RA. Chronic reduction of plasma free fatty acid improves mitochondrial function and  
35 whole-body insulin sensitivity in obese and type 2 diabetic individuals. *Diabetes* 2014;63:2812-  
36 2820.
- 37 7. Chavez AO, Kamath S, Jani R, Sharma LK, Monroy A, Abdul-Ghani MA, Centonze VE,  
38 Sathyanarayana P, Coletta DK, Jenkinson CP, Bai Y, Folli F, Defronzo RA, Tripathy D. Effect of  
39 short-term free Fatty acids elevation on mitochondrial function in skeletal muscle of healthy  
40 individuals. *J Clin Endocrinol Metab* 2010;95:422-429.
- 41 8. Schenk S, Saberi M, Olefsky JM. Insulin sensitivity: modulation by nutrients and inflammation. *J*  
42 *Clin Invest* 2008;118:2992-3002.
- 43 9. Boden G. Role of fatty acids in the pathogenesis of insulin resistance and NIDDM. *Diabetes*  
44 1997;46:3-10.
- 45 10. Wellen KE, Hotamisligil GS. Inflammation, stress, and diabetes. *J Clin Invest* 2005;115:1111-  
46 1119.
- 47 11. Coll T, Eyre E, Rodríguez-Calvo R, Palomer X, Sánchez RM, Merlos M, Laguna JC, Vázquez-  
48 Carrera M. Oleate reverses palmitate-induced insulin resistance and inflammation in skeletal  
49 muscle cells. *J Biol Chem* 2008;283:11107-11116.
- 50 12. Chaurasia B, Summers SA. Ceramides - Lipotoxic Inducers of Metabolic Disorders.  
51 *Trends Endocrinol Metab* 2015;26:538-550.
- 52 13. Senn JJ. Toll-like receptor-2 is essential for the development of palmitate-induced insulin  
53 resistance in myotubes. *J Biol Chem* 2006;281:26865-26875.
- 54  
55  
56  
57  
58  
59  
60  
61  
62  
63  
64  
65

14. Salvadó L, Coll T, Gómez-Foix AM, Salmerón E, Barroso E, Palomer X, Vázquez-Carrera M. Oleate prevents saturated-fatty-acid-induced ER stress, inflammation and insulin resistance in skeletal muscle cells through an AMPK-dependent mechanism. *Diabetologia* 2013;56:1372-1382.
15. Salvadó L, Palomer X, Barroso E, Vázquez-Carrera M. Targeting endoplasmic reticulum stress in insulin resistance. *Trends Endocrinol Metab* 2015;26:438-448.
16. Kim JK, Kim YJ, Fillmore JJ, Chen Y, Moore I, Lee J, Yuan M, Li ZW, Karin M, Perret P, Shoelson SE, Shulman GI. Prevention of fat-induced insulin resistance by salicylate. *J Clin Invest* 2001;108:437-446.
17. Lipina C, Macrae K, Suhm T, Weigert C, Blachnio-Zabielska A, Baranowski M, Gorski J, Burgess K, Hundal HS. Mitochondrial substrate availability and its role in lipid-induced insulin resistance and proinflammatory signaling in skeletal muscle. *Diabetes* 2013;62:3426-3436.
18. Handschin C, Spiegelman BM. Peroxisome proliferator-activated receptor gamma coactivator 1 coactivators, energy homeostasis, and metabolism. *Endocr Rev* 2006;27:728-735.
19. Patti ME, Butte AJ, Crunkhorn S, Cusi K, Berria R, Kashyap S, Miyazaki Y, Kohane I, Costello M, Saccone R, Landaker EJ, Goldfine AB, Mun E, DeFronzo R, Finlayson J, Kahn CR, Mandarino LJ. Coordinated reduction of genes of oxidative metabolism in humans with insulin resistance and diabetes: Potential role of PGC1 and NRF1. *Proc Natl Acad Sci U S A* 2003;100:8466-8471.
20. Mootha VK, Lindgren CM, Eriksson KF, Subramanian A, Sihag S, Lehar J, Puigserver P, Carlsson E, Ridderstråle M, Laurila E, Houstis N, Daly MJ, Patterson N, Mesirov JP, Golub TR, Tamayo P, Spiegelman B, Lander ES, Hirschhorn JN, Altshuler D, Groop LC. PGC-1alpha-responsive genes involved in oxidative phosphorylation are coordinately downregulated in human diabetes. *Nat Genet* 2003;34:267-273.
21. Gallagher IJ, Scheele C, Keller P, Nielsen AR, Remenyi J, Fischer CP, Roder K, Babraj J, Wahlestedt C, Hutvagner G, Pedersen BK, Timmons JA. Integration of microRNA changes in vivo identifies novel molecular features of muscle insulin resistance in type 2 diabetes. *Genome Med* 2010;1;2:9.
22. Janson J, Laedtke T, Parisi JE, O'Brien P, Petersen RC, Butler PC. Increased risk of type 2 diabetes in Alzheimer disease. *Diabetes* 2004;53:474-481.
23. Strachan MW, Reynolds RM, Marioni RE, Price JF. Cognitive function, dementia and type 2 diabetes mellitus in the elderly. *Nat Rev Endocrinol* 2001;7:108-114.
24. Hamilton DL, Findlay JA, Montagut G, Meakin PJ, Bestow D, Jalicy SM, Ashford ML. Altered amyloid precursor protein processing regulates glucose uptake and oxidation in cultured rodent myotubes. *Diabetologia* 2014;57:1684-1692.
25. LaFerla FM, Green KN, Oddo S. Intracellular amyloid-beta in Alzheimer's disease. *Nat Rev Neurosci* 2007;8:499-509.
26. Meakin PJ, Harper AJ, Hamilton DL, Gallagher J, McNeilly AD, Burgess LA, Vaanholt LM, Bannon KA, Latcham J, Hussain I, Speakman JR, Howlett DR, Ashford ML. Reduction in BACE1 decreases body weight, protects against diet-induced obesity and enhances insulin sensitivity in mice. *Biochem J* 2012;441:285-296.
27. Puglielli L, Ellis BC, Saunders AJ, Kovacs DM. Ceramide stabilizes beta-site amyloid precursor protein-cleaving enzyme 1 and promotes amyloid beta-peptide biogenesis. *J Biol Chem* 2003;278:19777-19783.
28. Salvadó L, Barroso E, Gómez-Foix AM, Palomer X, Michalik L, Wahli W, Vázquez-Carrera M. PPAR $\beta/\delta$  prevents endoplasmic reticulum stress-associated inflammation and insulin resistance in skeletal muscle cells through an AMPK-dependent mechanism. *Diabetologia* 2014;57:2126-2135.
29. Herrero L, Rubí B, Sebastián D, Serra D, Asins G, Maechler P, Prentki M, Hegardt FG. Alteration of the malonyl-CoA/carnitine palmitoyltransferase I interaction in the cell impairs glucose-induced insulin secretion. *Diabetes* 2005;54:462-471.
30. Buggia-Prevot V, Sevalle J, Rossner S, Checler F. NFkappaB-dependent control of BACE1 promoter transactivation by Abeta42. *J Biol Chem* 2008;283:10037-10047.
31. Hehner SP, Heinrich M, Bork PM, Vogt M, Ratter F, Lehmann V, Schulze-Osthoff K, Dröge W, Schmitz ML. Sesquiterpene lactones specifically inhibit activation of NF-kappa B by preventing the degradation of I kappa B-alpha and I kappa B-beta. *J Biol Chem* 1998;273:1288-1297.

- 1  
2  
3  
4  
5  
6  
7  
8  
9  
10  
11  
12  
13  
14  
15  
16  
17  
18  
19  
20  
21  
22  
23  
24  
25  
26  
27  
28  
29  
30  
31  
32  
33  
34  
35  
36  
37  
38  
39  
40  
41  
42  
43  
44  
45  
46  
47  
48  
49  
50  
51  
52  
53  
54  
55  
56  
57  
58  
59  
60  
61  
62  
63  
64  
65
32. Zhou L, Zhang J, Fang Q, Liu M, Liu X, Jia W, Dong LQ, Liu F. Autophagy-mediated insulin receptor down-regulation contributes to endoplasmic reticulum stress-induced insulin resistance. *Mol Pharmacol* 2009;76:596-603.
  33. Kang C, Li Ji L. Role of PGC-1 $\alpha$  signaling in skeletal muscle health and disease. *Ann N Y Acad Sci* 2012;1271:110-117.
  34. Hondares E, Pineda-Torra I, Iglesias R, Staels B, Villarroya F, Giralto M. PPARdelta, but not PPARalpha, activates PGC-1alpha gene transcription in muscle. *Biochem Biophys Res Commun* 2007;354:1021-1027.
  35. Buroker NE, Barboza J, Huang JY. The IkappaBalpha gene is a peroxisome proliferator-activated receptor cardiac target gene. *FEBS J* 2009;276:3247-3255.
  36. Vega RB, Huss JM, Kelly DP. The coactivator PGC-1 cooperates with peroxisome proliferator-activated receptor alpha in transcriptional control of nuclear genes encoding mitochondrial fatty acid oxidation enzymes. *Mol Cell Biol* 2000;20:1868-1876.
  37. Wenz T, Rossi SG, Rotundo RL, Spiegelman BM, Moraes CT. Increased muscle PGC-1alpha expression protects from sarcopenia and metabolic disease during aging. *Proc Natl Acad Sci U S A* 2009;106:20405-20410.
  38. Yoon, J.C., P. Puigserver, G. Chen, J. Donovan, Z. Wu, J. Rhee, G. Adelmant, J. Stafford, C.R. Kahn, D.K. Granner, et al. 2001. Control of hepatic gluconeogenesis through the transcriptional coactivator PGC-1. *Nature* 413:131-138.
  39. Wu Z, Huang X, Feng Y, Handschin C, Feng Y, Gullicksen PS, Bare O, Labow M, Spiegelman B, Stevenson SC. Transducer of regulated CREB-binding proteins (TORCs) induce PGC-1alpha transcription and mitochondrial biogenesis in muscle cells. *Proc Natl Acad Sci U S A* 2006;103:14379-14384.
  40. Herzig S, Long F, Jhala US, Hedrick S, Quinn R, Bauer A, Rudolph D, Schutz G, Yoon C, Puigserver P, Spiegelman B, Montminy M. CREB regulates hepatic gluconeogenesis through the coactivator PGC-1. *Nature* 2001;413:179-183.
  41. Gonzalez GA, Montminy MR. Cyclic AMP stimulates somatostatin gene transcription by phosphorylation of CREB at serine 133. *Cell* 1989;59:675-680.
  42. Chen Y, Huang X, Zhang YW, Rockenstein E, Bu G, Golde TE, Masliah E, Xu H. Alzheimer's  $\beta$ -secretase (BACE1) regulates the cAMP/PKA/CREB pathway independently of  $\beta$ -amyloid. *J Neurosci* 2012;32:11390-11395.
  43. Shoji S, Titani K, Demaille JG, Fischer EH. Sequence of two phosphorylated sites in the catalytic subunit of bovine cardiac muscle adenosine 3':5'-monophosphate-dependent protein kinase. *J Biol Chem* 1979;254:6211-6214.
  44. Handschin C, Spiegelman BM. The role of exercise and PGC1alpha in inflammation and chronic disease. *Nature* 2008;454:463-469.
  45. Handschin C. Peroxisome proliferator-activated receptor-gamma coactivator-1alpha in muscle links metabolism to inflammation. *Clin Exp Pharmacol Physiol* 2009;36:1139-1143.
  46. Arnold AS, Egger A, Handschin C. PGC-1 $\alpha$  and myokines in the aging muscle - a mini-review. *Gerontology* 2011;57:37-43.
  47. Zhang Y, Zhou B, Deng B, Zhang F, Wu J, Wang Y, Le Y, Zhai Q. Amyloid- $\beta$  induces hepatic insulin resistance in vivo via JAK2. *Diabetes* 2013;62:1159-66.
  48. Wang R, Li JJ, Diao S, Kwak YD, Liu L, Zhi L, Büeler H, Bhat NR, Williams RW, Park EA, Liao FF. Metabolic stress modulates Alzheimer's  $\beta$ -secretase gene transcription via SIRT1-PPAR $\gamma$ -PGC-1 in neurons. *Cell Metab* 2013;17:685-694.
  49. Tong L, Thornton PL, Balazs R, Cotman CW. Beta -amyloid-(1-42) impairs activity-dependent cAMP-response element-binding protein signaling in neurons at concentrations in which cell survival is not compromised. *J Biol Chem* 2001;276:17301-17306
  50. Koves, T.R., J.R. Ussher, R.C. Noland, D. Slentz, M. Mosedale, O. Ilkayeva, J. Bain, R. Stevens, J.R.B. Dyck, C.B. Newgard, G.D. Lopaschuk, D.M. Muoio. Mitochondrial overload and incomplete fatty acid oxidation contribute to skeletal muscle insulin resistance. *Cell Metab* 2008;7:45-56.

51. Liang, H., B. Balas, P. Tantiwong, J. Dube, B.H. Goodpaster, R.M. O'Doherty, R.A. DeFronzo, A. Richardson, N. Musi, and W.F. Ward. Whole body overexpression of PGC-1alpha has opposite effects on hepatic and muscle insulin sensitivity. *Am. Endocrinol. Metab.* 2009; 296:E945-954.

1  
2  
3  
4  
5  
6  
7  
8  
9  
10  
11  
12  
13  
14  
15  
16  
17  
18  
19  
20  
21  
22  
23  
24  
25  
26  
27  
28  
29  
30  
31  
32  
33  
34  
35  
36  
37  
38  
39  
40  
41  
42  
43  
44  
45  
46  
47  
48  
49  
50  
51  
52  
53  
54  
55  
56  
57  
58  
59  
60  
61  
62  
63  
64  
65

## Figure legends

1  
2 **FIG. 1.** Palmitate modulates *Bace1* mRNA expression in myotubes. **A**, mRNA abundance of *Bace1* from  
3 mouse C2C12 myotubes incubated in the presence or absence (Ct: control, white bars) of 0.5 mM palmitate  
4 (Pal, black bars) for different times. The graphs show quantification of the *aprt*-normalized mRNA levels,  
5 expressed as a percentage of control samples  $\pm$  SD of six independent experiments. **B**, *Bace1* mRNA levels  
6 in mouse C2C12 myotubes incubated in the presence or absence (Ct: control) of 0.5 mM palmitate (Pal) or  
7 0.5 mM palmitate plus 10  $\mu$ M parthenolide (Parth) for 8 h. Data are means samples  $\pm$  SD of six  
8 independent experiments. **C**, Cell lysates from C2C12 myotubes incubated in the presence or absence (Ct:  
9 control) of 0.5 mM palmitate (Pal) for 8 and 16 h were assayed for Western-blot analysis with antibodies  
10 against BACE1 and  $\beta$ -actin. The graphs show quantification of normalized protein levels expressed as a  
11 percentage of control samples  $\pm$  SD of four independent experiments. Skeletal muscle and white adipose  
12 tissue from male mice fed a standard diet (Control, CT) or a high-fat diet (HFD) (n=5 per group) for 12  
13 weeks. mRNA abundance (**D**) and protein levels (**E**) of BACE1 in skeletal muscle. mRNA abundance (**F**)  
14 and protein levels (**G**) of BACE1 in white adipose tissue. \*\*\*p<0.001, \*\*p<0.01 and \*p<0.05 vs. control.  
15  
16  
17  
18  
19  
20  
21  
22  
23  
24  
25  
26  
27  
28  
29  
30  
31  
32  
33  
34  
35  
36  
37  
38  
39  
40  
41  
42  
43  
44  
45  
46  
47  
48  
49  
50  
51  
52  
53  
54  
55  
56  
57  
58  
59  
60  
61  
62  
63  
64  
65

**FIG. 2.** BACE1 inhibition attenuates palmitate-induced ER stress, inflammation, and insulin resistance in  
myotubes. Mouse C2C12 myotubes were incubated in the presence or absence (Ct: control) of 0.5 mM  
palmitate (Pal) or palmitate 0.5 mM plus 100 nM Merck 3 (M3) for 16 h. **A**, spliced *Xbp1* (*sXbp1*) mRNA  
levels. uXBP1, unspliced XBP1. **B**, *Atf3*, *Chop*, *Tnf- $\alpha$* , *Il-6*, and *BiP* mRNA levels. The graphs show  
quantification of *aprt*-normalized mRNA levels, expressed as a percentage of control samples  $\pm$  SD of six  
independent experiments. **C**, Cell lysates were subjected to Western blot analysis with antibodies against  
 $\text{I}\kappa\text{B}\alpha$  and p65. The graphs show quantification of normalized protein levels expressed as a percentage of  
control samples  $\pm$  SD of four independent experiments. **D**, Autoradiograph of EMSA performed with a  $^{32}\text{P}$ -  
labeled NF- $\kappa\text{B}$  nucleotide and crude nuclear protein extract (NE) from C2C12 myotubes. Two main  
specific complexes (I and II) based on competition with a molar excess of unlabeled probe are shown. The

1 supershift immune complex (IC) obtained by incubating NE with an antibody (Ab) directed against the p65  
2 subunit of NF- $\kappa$ B is also shown. Competition and supershift studies demonstrated that band I was specific  
3 and mainly consisted of the p65 subunit of NF- $\kappa$ B. Cell lysates were subjected to Western blot analysis  
4 with antibodies against IR $\beta$ , phospho-IRS1 (Ser<sup>307</sup>) (E) and total and phospho-Akt (Ser<sup>473</sup>) (F). Where  
5 indicated, cells were incubated with 100 nM insulin (Ins) for the last 10 min. The graphs show  
6 quantification of normalized protein levels expressed as a percentage of control samples  $\pm$  SD of four  
7 independent experiments. G, *Pgc-1 $\alpha$* , *Ppara $\alpha$*  and *Ppar $\beta/\delta$*  mRNA levels. The graphs show quantification  
8 of *aprt*-normalized mRNA levels, expressed as a percentage of control samples  $\pm$  SD of six independent  
9 experiments. H, PGC-1 $\alpha$ , PPAR $\alpha$  and PPAR $\beta/\delta$  protein levels. I, *I $\kappa$ B $\alpha$* , *Acox*, *Mcad* and *Cpt-1 $\alpha$*  mRNA  
10 levels (n=6). J, Autoradiograph of EMSA performed with a <sup>32</sup>P-labeled PPRE nucleotide and crude nuclear  
11 protein extract (NE) from C2C12 myotubes. Two main specific complexes (I and II) based on competition  
12 with a molar excess of unlabeled probe are shown. The supershift immune complex (IC) obtained by  
13 incubating NE with an antibody (Ab) directed against PPAR $\alpha$  is also shown. PPRE, Peroxisome  
14 proliferator response element.\*\*\*p<0.001, \*\*p<0.01 and \*p<0.05 vs. control, ###p<0.001, ##p<0.01 and  
15 #p<0.05 vs. palmitate-exposed cells. †p<0.05 vs. control cells incubated with insulin.

16  
17  
18  
19  
20  
21  
22  
23  
24  
25  
26  
27  
28  
29  
30  
31  
32  
33  
34  
35  
36  
37  
38  
39 **FIG. 3.** BACE1 deficiency increases PGC-1 $\alpha$  levels. C2C12 cells were transfected with control or BACE1  
40 siRNA for 24 hours and the expression (A) and protein levels (B) of PGC-1 $\alpha$ , PPAR $\alpha$  and PPAR $\beta/\delta$  were  
41 examined (n=4). C, *Chop*, *Tnf- $\alpha$* , *Mcp-1*, *Cpt-1 $\alpha$* , *Acox* and *Mcad* mRNA levels in C2C12 cells transfected  
42 with control or BACE1 siRNA for 24 hours (n=5). D, Cell lysates from C2C12 cells transfected with  
43 control or BACE1 siRNA for 24 hours were subjected to Western blot analysis with antibodies against  
44 I $\kappa$ B $\alpha$  and IR $\beta$  and phospho-IRS1 (Ser<sup>307</sup>). The graphs show quantification of normalized protein levels  
45 expressed as a percentage of control samples  $\pm$  SD of four independent experiments. \*\*\*p<0.001,  
46 \*\*p<0.01 and \*p<0.05 vs. control. Skeletal muscle from *Bace1*-deficient mice show increased expression  
47 and protein levels of genes involved in FA metabolism, inflammation and insulin signaling. Skeletal  
48  
49  
50  
51  
52  
53  
54  
55  
56  
57  
58  
59  
60  
61  
62  
63  
64  
65

1 muscle from male wild-type and BACE1-null mice was used (n=6 per group). mRNA abundance (E) and  
2 protein levels (F) of PGC-1 $\alpha$ , PPAR $\alpha$  and PPAR $\beta/\delta$ . G, mRNA levels of *I $\kappa$ B $\alpha$* , *Mcp-1*, *Tnf- $\alpha$* , *Chop*, *Cpt-*  
3 *1 $\alpha$* , *Acox* and *Mcad*. The graphs show quantification of *aprt*-normalized mRNA levels, expressed as a  
4 percentage of control samples  $\pm$  SD of six independent experiments. H, Cell lysates from wild-type and  
5 BACE1-null mice were subjected to Western blot analysis with antibodies against I $\kappa$ B $\alpha$ , total and  
6 phospho-eIF2 $\alpha$ , IR $\beta$  and phospho-IRS1 (Ser<sup>307</sup>). The graphs show quantification of normalized protein  
7 levels expressed as a percentage of control samples  $\pm$  SD (n=5). \*\*\*p<0.001, \*\*p<0.01 and \*p<0.05 vs.  
8 control. I, *Bace1* knockdown prevents the reduction in *Pgc-1 $\alpha$*  expression caused by an HFD in skeletal  
9 muscle. Skeletal muscle from wild-type and BACE1-null mice fed with a regular chow diet and HFD for  
10 20 weeks. mRNA abundance of *Pgc-1 $\alpha$* , *Ppara $\alpha$* , *Ikb $\alpha$* , *Tnf- $\alpha$*  and *Il-6*. The graphs show quantification of  
11 *aprt*-normalized mRNA levels, expressed as a percentage of control samples  $\pm$  SD (n=5). \*\*\*p<0.001,  
12 \*\*p<0.01 and \*p<0.05 vs. wild-type mice fed a regular chow diet, ####p<0.001 and ##p<0.01 and vs. wild-  
13 type mice fed an HFD.

14  
15  
16  
17  
18  
19  
20  
21  
22  
23  
24  
25  
26  
27  
28  
29  
30  
31  
32 **FIG. 4.** sAPP $\beta$  mimics the effects of palmitate exposure on ER stress, inflammation, and insulin  
33 resistance. Mouse C2C12 myotubes were incubated in the presence or absence (Ct: control) of 0.5 mM  
34 palmitate (Pal) for 16 h or 20 nM sAPP $\beta$  for 24 plus 16 h. A, *Pgc-1 $\alpha$* , *Ppara $\alpha$* , *Ppar $\beta/\delta$* , *Cpt-1 $\alpha$* , *Acox* and  
35 *Mcad* mRNA levels. The graphs show quantification of *aprt*-normalized mRNA levels, expressed as a  
36 percentage of control samples  $\pm$  SD of six independent experiments. Cell lysates were subjected to  
37 Western blot analysis with antibodies against (PGC-1 $\alpha$ ) (B) or different members of the OXPHOS  
38 complexes (n=4) (C). D, *Atf3*, *Chop*, *Tnf- $\alpha$* , *Il-6* and *I $\kappa$ B $\alpha$*  mRNA levels. Cell lysates were subjected to  
39 Western blot analysis with antibody against the p65 subunit of NF- $\kappa$ B (E), IR $\beta$  (F), phospho-IRS1 (Ser<sup>307</sup>)  
40 (G) and phospho-Akt (Ser<sup>473</sup>) (H) (n=4). Where indicated, cells were incubated with 100 nM insulin (Ins)  
41 for the last 10 min. The graphs show quantification of normalized protein levels expressed as a percentage  
42 of control samples  $\pm$  SD of four independent experiments. I, 2-DG uptake was assessed without or with  
43 insulin (n=6). cells were incubated with 20 nM sAPP $\beta$  or sAPP $\alpha$  for 24 plus 16 h. \*p<0.05 vs. control.

1  
2  
3  
4  
5  
6  
7  
8  
9  
10  
11  
12  
13  
14  
15  
16  
17  
18  
19  
20  
21  
22  
23  
24  
25  
26  
27  
28  
29  
30  
31  
32  
33  
34  
35  
36  
37  
38  
39  
40  
41  
42  
43  
44  
45  
46  
47  
48  
49  
50  
51  
52  
53  
54  
55  
56  
57  
58  
59  
60  
61  
62  
63  
64  
65

###p<0.001 vs. insulin-stimulated cells. **J**, BACE1 inhibition and sAPP $\beta$  regulate FAO oxidation (FAO) in C2C12 myotubes. Total FAO rate represented as the sum of acid-soluble products plus CO<sub>2</sub> oxidation. Mouse C2C12 myotubes were incubated in the presence or absence (Ct: control) of 0.5 mM palmitate (Pal), incubated with 100 nM Merck 3 alone for 24 plus 16 h (M3), pre-incubated with Merck3 for 24 h and then incubated with palmitate 0.5 mM plus 100 nM Merck3 for 16 h (Pal+M3) or cells were incubated with 20 nM sAPP $\beta$  for 24 plus 16 h (n=4). \*\*\*p<0.001, \*\*p<0.01 and \*p<0.05 vs. control. ###p<0.001, ##p<0.01 and #p<0.05 vs. palmitate-exposed cells, †††p<0.001 vs. control cells incubated with insulin.

**FIG. 5.** Increased *BACE1* expression in subcutaneous adipose tissue is accompanied by enhanced plasma levels of sAPP $\beta$  in type 2 diabetic subjects. **A**, qRT-PCR analysis of *BACE1* and *PGC-1 $\alpha$*  in subcutaneous adipose tissue of lean (n=18), obese (n=21) and type 2 diabetic patients (T2D) (n=23). The mRNA expression of each gene was normalized to GAPDH. Values are reported as mean  $\pm$  SEM. **B**, sAPP $\beta$  and A $\beta$ 42 in the plasma of mice fed a control diet (Ct, white bars) or a HFD (black bars) for 3 weeks. Ponceau S staining served as loading controls. \*\*\*p<0.001 vs. mice fed a regular diet. Representative images of plasma sAPP $\beta$  levels in obese and lean subjects (**C**) and type 2 diabetic (T2D) and obese subjects (**D**). Ponceau S staining served as loading controls. \*p<0.05 vs. obese subjects. Intramuscular (i.m.) injection of sAPP $\beta$  in the gastrocnemius muscle of mice reduces *PGC-1 $\alpha$*  levels. **E**, *Chop*, *Atf3*, *BiP*, *Tnf- $\alpha$* , and *Il-6* mRNA levels. **F**, *Pgc-1a*, and *Ppara $\alpha$*  mRNA abundance. The graphs show quantification of apt-normalized mRNA levels, expressed as a percentage of control samples  $\pm$  SD (n=6 per group). **G**, Protein extracts from gastrocnemius muscle of mice treated with sAPP $\beta$  (i.m.injection) or vehicle were subjected to Western blot analysis with antibodies against *PGC-1 $\alpha$* , *BiP*, total and phospho-eIF2 $\alpha$  and *I $\kappa$ B $\alpha$* . The graphs show quantification of normalized protein levels expressed as a percentage of control samples  $\pm$  SD (n=6 per group). \*\*\*p<0.001, \*\*p<0.01 and \*p<0.05 vs. control mice treated with vehicle.

1  
2  
3  
4  
5  
6  
7  
8  
9  
10  
11  
12  
13  
14  
15  
16  
17  
18  
19  
20  
21  
22  
23  
24  
25  
26  
27  
28  
29  
30  
31  
32  
33  
34  
35  
36  
37  
38  
39  
40  
41  
42  
43  
44  
45  
46  
47  
48  
49  
50  
51  
52  
53  
54  
55  
56  
57  
58  
59  
60  
61  
62  
63  
64  
65

**FIG. 6.** sAPP $\beta$  administration to mice reduces PGC-1 $\alpha$  in skeletal muscle and liver, reduces insulin sensitivity and lowers basal glucose levels. sAPP $\beta$  or vehicle was administered to mice (i.p.) (10  $\mu$ g/mouse) before (20.00 h) and after (8.00 h) an overnight fasting to conduct either a GTT or a ITT. **A**, plasma basal glucose levels 6 hours later the last administration of sAPP $\beta$  (n=6 per group). **B**, GTT and ITT and area under the curve (AUC). Data are presented as the mean  $\pm$  S.D. (n=6 per group). **C**, *Atf3*, *BiP*, *Chop*, *Tnf- $\alpha$* , and *IL-6* mRNA levels in skeletal muscle from mice treated with vehicle or sAPP $\beta$ . The graphs show quantification of aprt-normalized mRNA levels, expressed as a percentage of control samples  $\pm$  SD (n=6 per group). **D**, *I $\kappa$ B $\alpha$*  and BiP protein levels in skeletal muscle from mice treated with vehicle or sAPP $\beta$  (n=5 per group). **E**, *Pgc-1 $\alpha$* , and *Ppar $\alpha$*  mRNA abundance. PGC-1 $\alpha$ , phospho-CREB (Ser<sup>133</sup>), phospho-PKA (Thr<sup>197</sup>) (**F**), IR $\beta$ , and phospho-IRS1 (Ser<sup>307</sup>) (**G**) protein levels in skeletal muscle from mice treated with vehicle or sAPP $\beta$  (n=5 per group). **H**, *Pgc-1 $\alpha$* , *Ppar $\alpha$* , *I $\kappa$ B $\alpha$* , *Atf3*, *BiP*, *Chop*, *Tnf- $\alpha$* , *IL-6*, *Pepck*, and *G6Pase* mRNA abundance in liver from mice treated with vehicle or sAPP $\beta$  (n=6 per group). **I**, PGC-1 $\alpha$  and NRF-1 protein levels in liver from mice treated with vehicle or sAPP $\beta$  (n=5 per group). **J**, IR $\beta$ , and phospho-IRS1 (Ser<sup>307</sup>) protein levels in liver from mice treated with vehicle or sAPP $\beta$  (n=5 per group). **K**, Pyruvate tolerance test and AUC (n=4 per group). \*\*\*p<0.001, \*\*p<0.01 and \*p<0.05 vs. control.

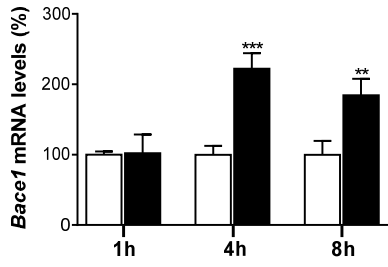
42  
43  
44  
45  
46  
47  
48  
49  
50  
51  
52  
53  
54  
55  
56  
57  
58  
59  
60  
61  
62  
63  
64  
65

**FIG. 7.** BACE1 regulates the cAMP-PKA-CREB pathway in myotubes. Mouse C2C12 myotubes were incubated in the presence or absence (Ct: control) of 0.5 mM palmitate (Pal) or pre-incubated with 100 nM Merck 3 (M3) for 24 h and then incubated with palmitate 0.5 mM plus 100 nM M3 for 16 h or cells were incubated with 20 nM sAPP $\beta$  for 40 h. **A**, **B**, Cell lysates were subjected to Western blot analysis with antibodies against total and phospho-CREB (Ser<sup>133</sup>). Phospho-CREB (Ser<sup>133</sup>) protein levels in C2C12 cells transfected with control or BACE1 siRNA for 24 hours (**C**) or in skeletal muscle from wild-type and *Bace1*-deficient mice (**D**) (n=4-6 per group). Phospho-PKA (Thr<sup>197</sup>) protein levels in C2C12 myotubes exposed to palmitate or palmitate plus M3 (**E**) or exposed to sAPP $\beta$  (**F**) (n=4-6 per group). Phospho-PKA

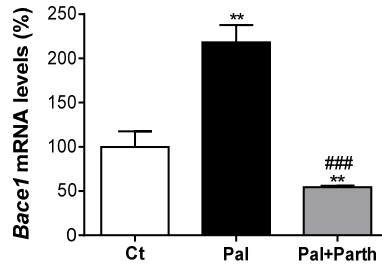
1 (Thr<sup>197</sup>) protein levels in C2C12 cells transfected with control or BACE1 siRNA for 24 h (G) or in skeletal  
2 muscle from wild-type and *Bace1*-deficient mice (H). The graphs show quantification of normalized  
3 protein levels expressed as a percentage of control samples  $\pm$  SD (n=4-6 per group). PKA activity (I) and  
4 cAMP levels (J) (n=5). K, C2C12 protein extracts were immunoprecipitated using an adenylate cyclase  
5 antibody and then subjected to SDS-PAGE and immunoblotted with an anti-BACE1 antibody. No  
6 immunoprecipitation was observed with the unrelated antibody OCT1, indicating that the effect of the anti-  
7 BACE1 antibody was specific. \*\*\*p<0.001, \*\*p<0.01 and \*p<0.05 vs. control, ###p<0.001, ##p<0.01 and  
8 #p<0.05 vs. palmitate-exposed cells.  
9  
10  
11  
12  
13  
14  
15  
16  
17  
18  
19  
20  
21  
22

23 **FIG. 8.** sAPP $\beta$  increases BACE1 levels and its interaction with AC. A, BACE1 protein levels in skeletal  
24 muscle from mice treated with vehicle or sAPP $\beta$  (i.p.) (10  $\mu$ g/mouse) twice in a day. PGC-1 $\alpha$  and BACE1  
25 mRNA (B) and protein (C) levels in mouse C2C12 myotubes incubated in the presence or absence (Ct:  
26 control) of 20 nM sAPP $\beta$  for 24 plus 16 h or 20 nM sAPP $\beta$  plus 10  $\mu$ M parthenolide (Parth). The graphs  
27 show quantification of the *aprt*-normalized mRNA levels, expressed as a percentage of control samples  $\pm$   
28 SD of six independent experiments. \*\*\*p<0.001 vs. control. ###p<0.001 vs. sAPP $\beta$ -exposed cells. C2C12  
29 myotubes (D) and skeletal muscle from mice treated with vehicle or sAPP $\beta$  (E) protein extracts were  
30 immunoprecipitated using an adenylate cyclase antibody and then subjected to SDS-PAGE and  
31 immunoblotted with an anti-BACE1 antibody. No immunoprecipitation was observed with the unrelated  
32 antibody OCT1, indicating that the effect of the anti-BACE1 antibody was specific. F, Proposed  
33 mechanism by which the lipid-induced increase in BACE1 and sAPP $\beta$  reduce PGC-1 $\alpha$  and exacerbates  
34 lipid-induced ER stress, inflammation and insulin resistance in skeletal muscle and reduce gluconeogenesis  
35 in liver.  
36  
37  
38  
39  
40  
41  
42  
43  
44  
45  
46  
47  
48  
49  
50  
51  
52  
53  
54  
55  
56  
57  
58  
59  
60  
61  
62  
63  
64  
65

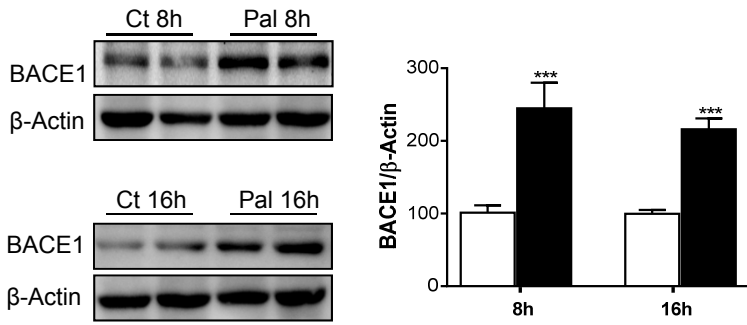
**A**



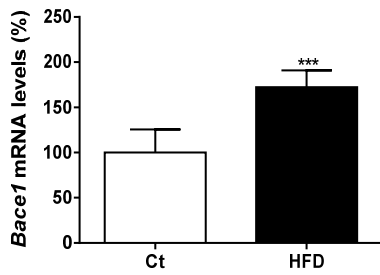
**B**



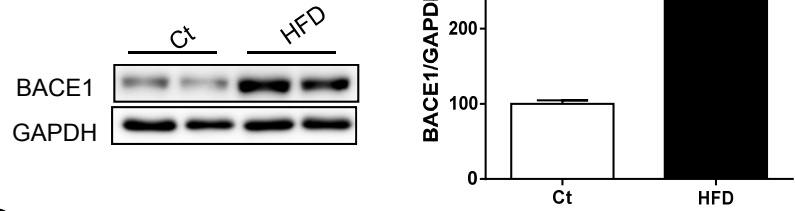
**C**



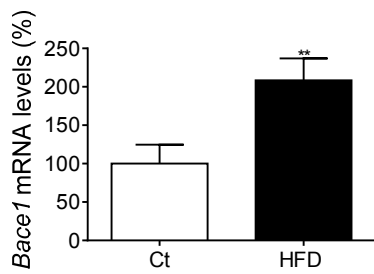
**D**



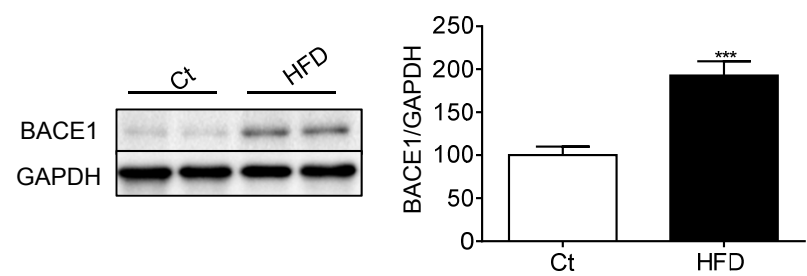
**E**



**F**



**G**



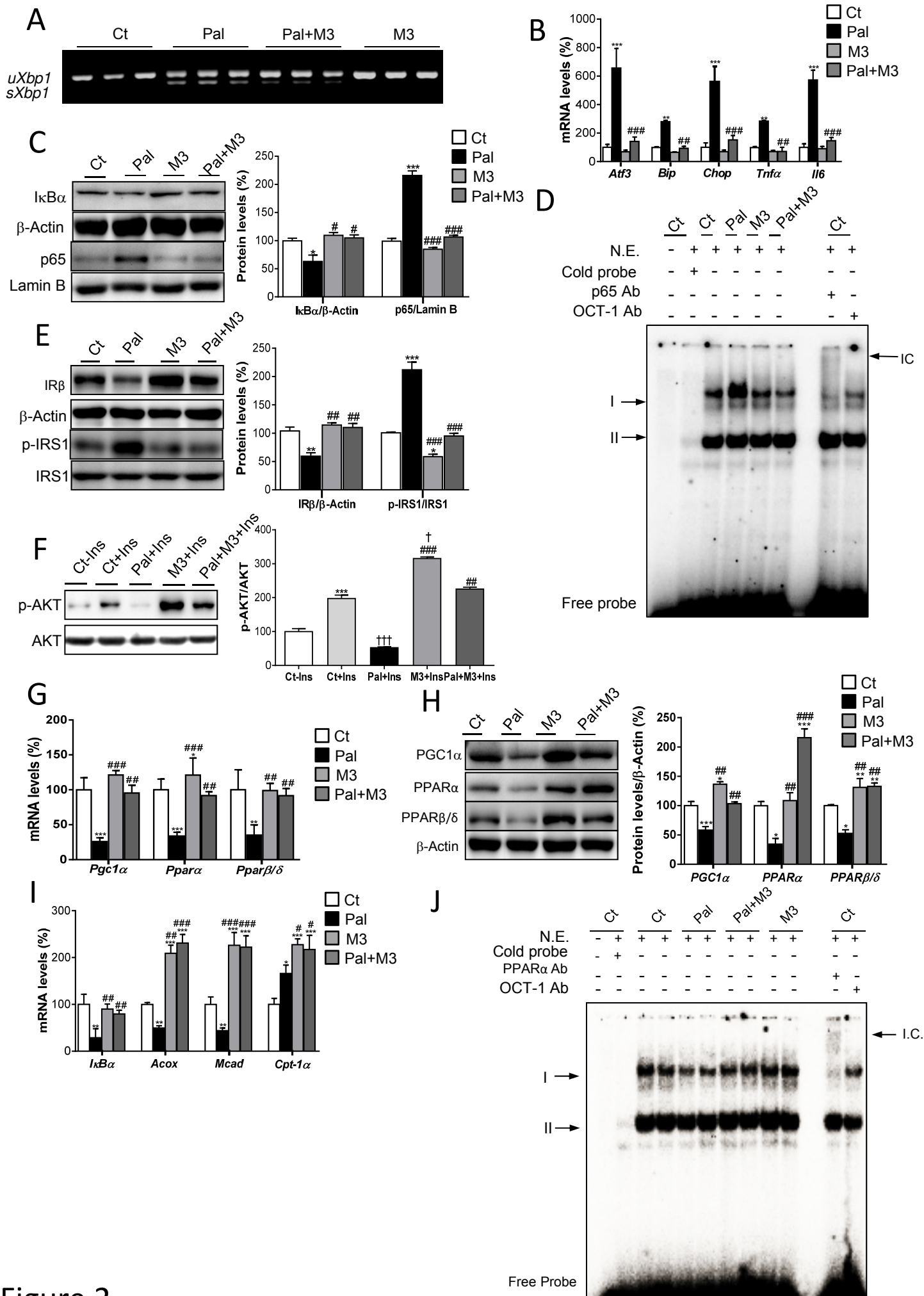


Figure 2

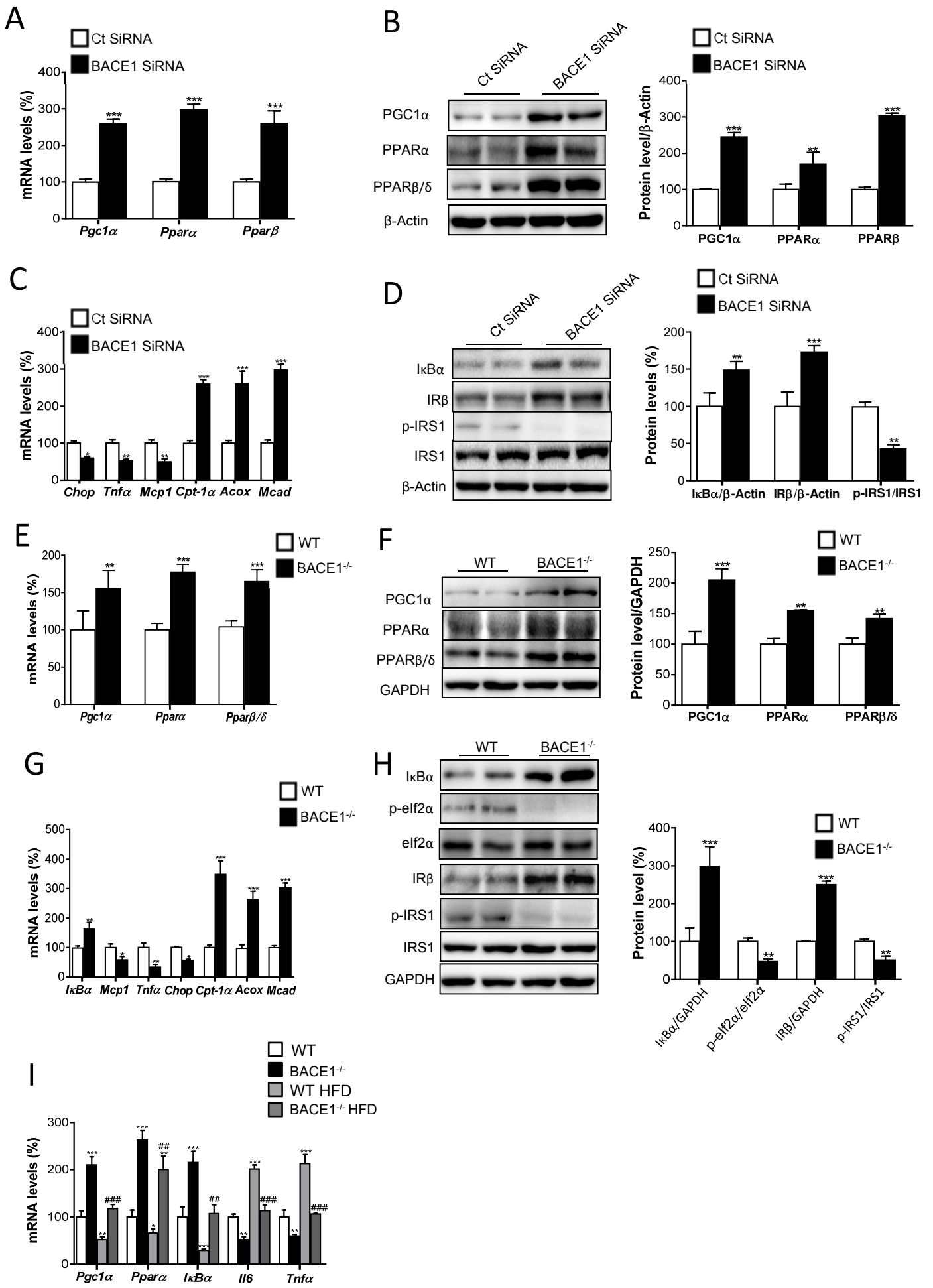


Figure 3

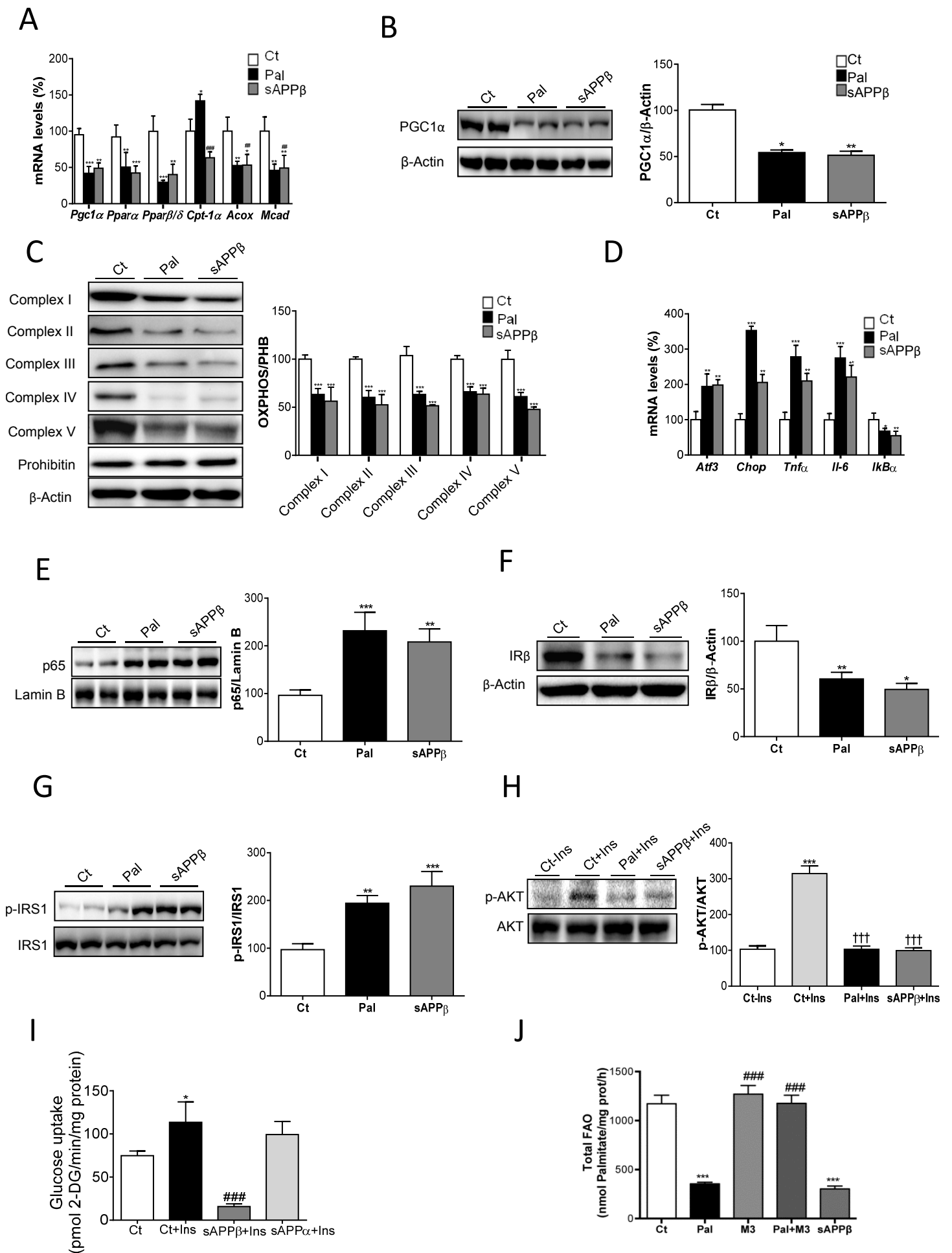


Figure 4

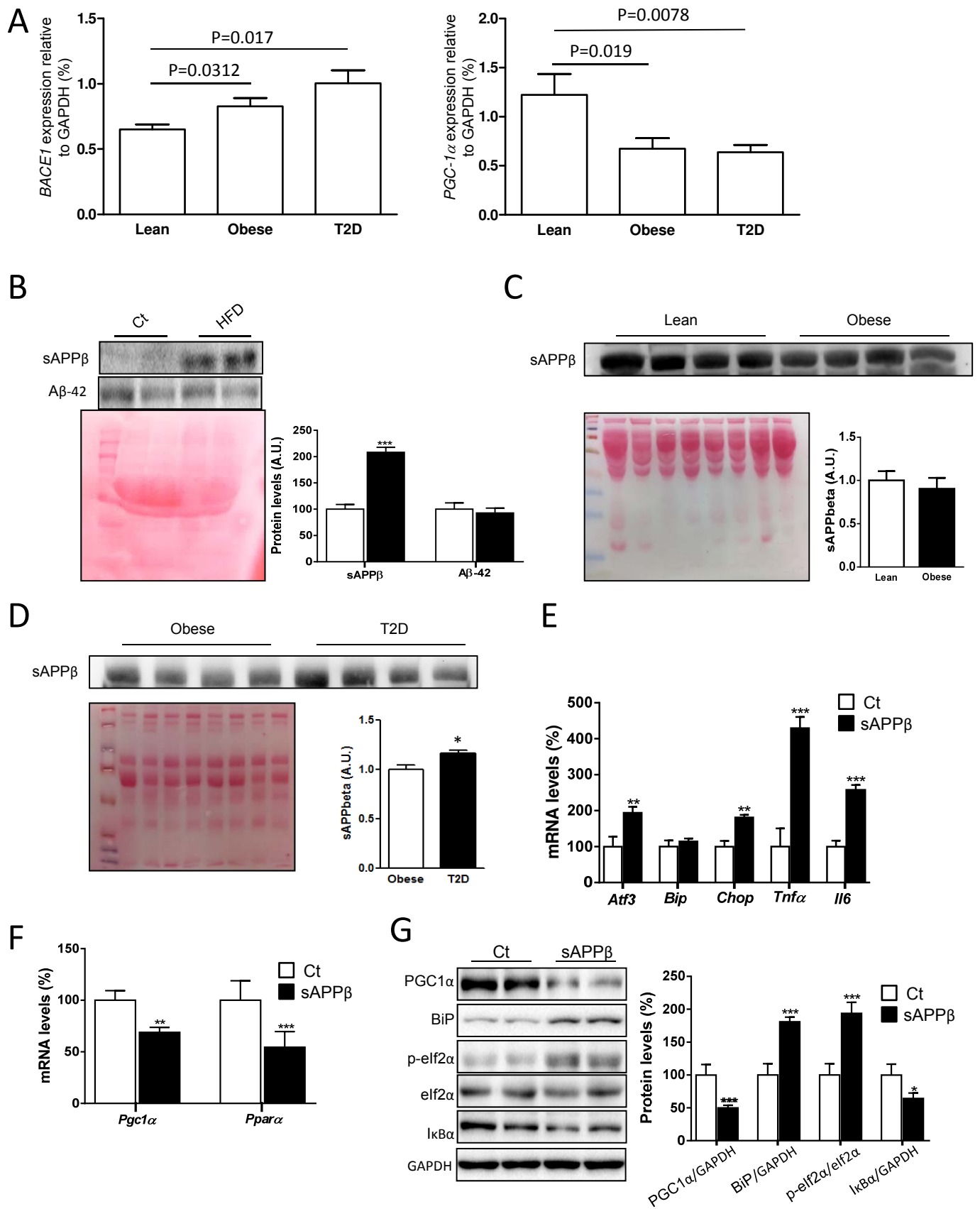


Figure 5

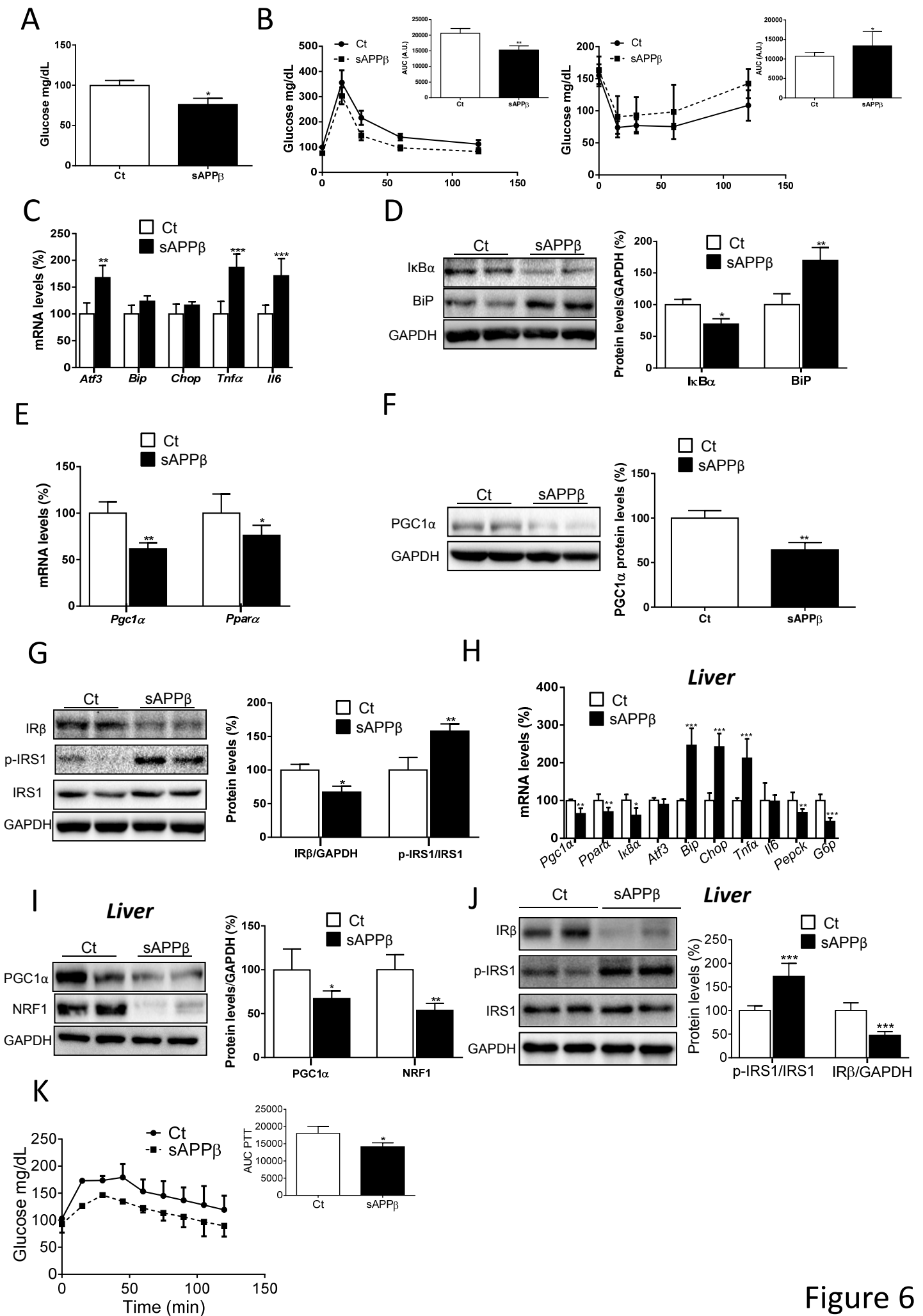


Figure 6

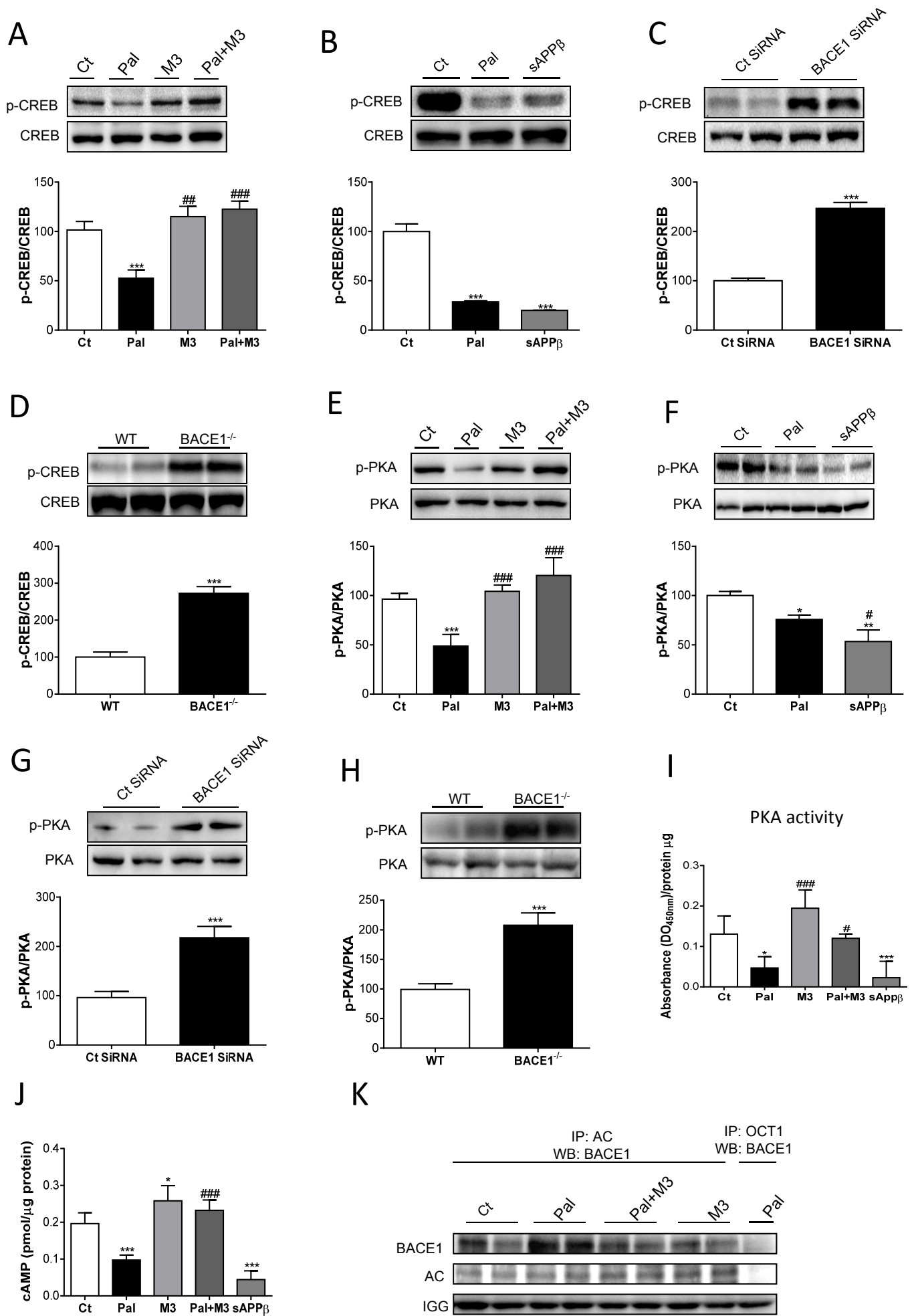
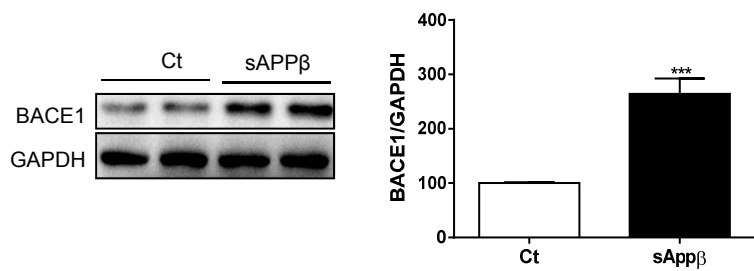
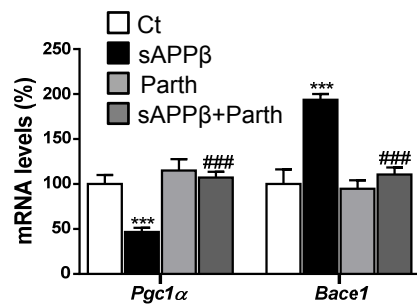


Figure 7

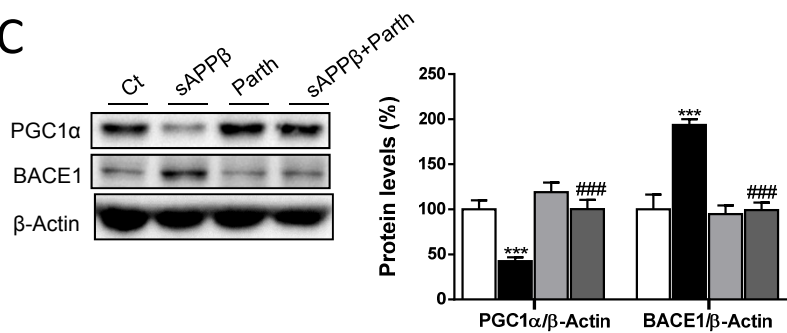
**A**



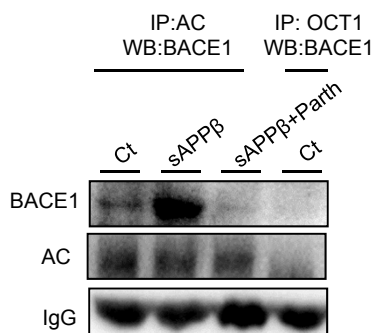
**B**



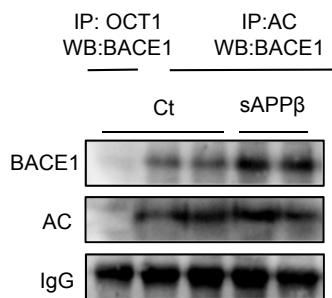
**C**



**D**



**E**



**F**

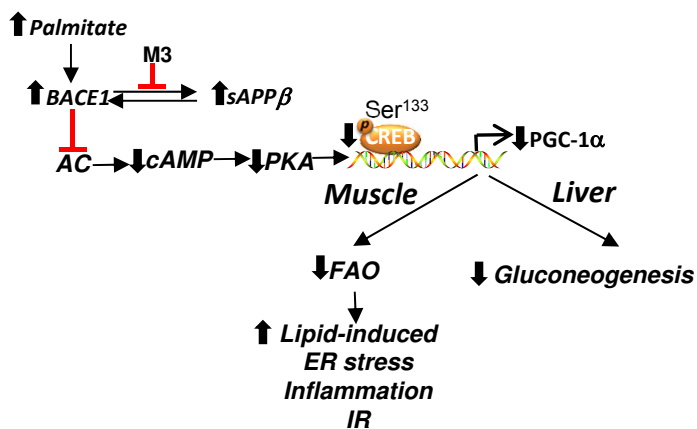


Figure 8

**Supplementary Material**

[Click here to download Supplementary Material: Supplemental Material bis.doc](#)

**Supplementary Material**

[Click here to download Supplementary Material: Supplementary Data.pptx](#)