



Deposited via The University of York.

White Rose Research Online URL for this paper:

<https://eprints.whiterose.ac.uk/id/eprint/129854/>

Version: Published Version

Article:

Ndosi, M, Wright-Hughes, Alexander, Brown, S et al. (2017) Prognosis of the infected diabetic foot ulcer: a 12-month prospective observational study. *Diabetic Medicine*. pp. 78-88. ISSN: 0742-3071

<https://doi.org/10.1111/dme.13537>

Reuse


This article is distributed under the terms of the Creative Commons Attribution-NonCommercial-NoDerivs (CC BY-NC-ND) licence. This licence only allows you to download this work and share it with others as long as you credit the authors, but you can't change the article in any way or use it commercially. More information and the full terms of the licence here: <https://creativecommons.org/licenses/>

Takedown

If you consider content in White Rose Research Online to be in breach of UK law, please notify us by emailing eprints@whiterose.ac.uk including the URL of the record and the reason for the withdrawal request.

Research: Complications

Prognosis of the infected diabetic foot ulcer: a 12-month prospective observational study

M. Ndosi^{1,2} , A. Wright-Hughes³, S. Brown³, M. Backhouse⁴, B. A. Lipsky⁵, M. Bhogal⁶, C. Reynolds³, P. Vowden⁷, E. B. Jude^{8,9}, J. Nixon³ and E. A. Nelson¹⁰

¹Department of Nursing and Midwifery, University of the West of England, Bristol, ²Academic Rheumatology Unit, University Hospitals Bristol NHS Foundation Trust, Bristol, ³Clinical Trials Research Unit, University of Leeds, Leeds, ⁴Leeds Institute of Rheumatic and Musculoskeletal Medicine, University of Leeds, Leeds, ⁵Division of Medical Sciences, University of Oxford, Oxford, ⁶School of Biomedical Sciences, University of Leeds, Leeds, ⁷Bradford Royal Infirmary, Bradford, ⁸Tameside and Glossop Integrated Care NHS Foundation Trust, Ashton-Under-Lyne, ⁹University of Manchester, Manchester and ¹⁰School of Healthcare, University of Leeds, Leeds, UK

Accepted 25 October 2017

Abstract

Aims To determine clinical outcomes and explore prognostic factors related to ulcer healing in people with a clinically infected diabetic foot ulcer.

Methods This multicentre, prospective, observational study reviewed participants' data at 12 months after culture of a diabetic foot ulcer requiring antibiotic therapy. From participants' notes, we obtained information on the incidence of wound healing, ulcer recurrence, lower extremity amputation, lower extremity revascularization and death. We estimated the cumulative incidence of healing at 6 and 12 months, adjusted for lower extremity amputation and death using a competing risk analysis, and explored the relationship between baseline factors and healing incidence.

Results In the first year after culture of the index ulcer, 45/299 participants (15.1%) had died. The ulcer had healed in 136 participants (45.5%), but recurred in 13 (9.6%). An ipsilateral lower extremity amputation was recorded in 52 (17.4%) and revascularization surgery in 18 participants (6.0%). Participants with an ulcer present for ~2 months or more had a lower incidence of healing (hazard ratio 0.55, 95% CI 0.39 to 0.77), as did those with a PEDIS (perfusion, extent, depth, infection, sensation) perfusion grade of ≥ 2 (hazard ratio 0.37, 95% CI 0.25 to 0.55). Participants with a single ulcer on their index foot had a higher incidence of healing than those with multiple ulcers (hazard ratio 1.90, 95% CI 1.18 to 3.06).

Conclusions Clinical outcomes at 12 months for people with an infected diabetic foot ulcer are generally poor. Our data confirm the adverse prognostic effect of limb ischaemia, longer ulcer duration and the presence of multiple ulcers.

Diabet. Med. 35, 78–88 (2018)

Introduction

One of the most common and serious complications of diabetes mellitus is the development of a foot ulcer, which occurs in up to a quarter of patients over their lifetime [1]. These diabetic foot ulcers, which primarily result from peripheral nerve damage and arterial disease, are associated with substantial morbidity, often including hospitalization and lower extremity amputation, as well as increased mortality [2]. These complications also lead to substantial healthcare costs and loss of productivity [3–5]. Over half of

diabetic foot ulcers are clinically infected at presentation [6], and these infected diabetic foot ulcers are especially associated with poor outcomes [7–12].

Understanding factors associated with diabetic foot ulcer healing may better inform prevention and management strategies. Prospective data on clinical outcomes of infected diabetic foot ulcer are scarce. Two large inception cohort studies [5,13–15] assessed factors associated with diabetic foot ulcer healing, but neither specifically recruited people with infected ulcers and both were limited to specialist centres. Ince *et al.* [13] and Jeffcoate *et al.* [14] found that among people attending one diabetic foot ulcer clinic for whom there was a 1-year follow-up, there was a relationship between time to healing and ulcer area, peripheral arterial disease, ulcer site and diabetes duration. The European Study Group on Diabetes and the Lower Extremity (Eurodiale)

Correspondence to: Mwidimi Ndosi. E-mail: mwidimi.ndosi@uwe.ac.uk. M.N. and A.W.H., and J.N. and E.A.N., contributed equally to this paper. This is an open access article under the terms of the Creative Commons Attribution-NonCommercial-NoDerivs License, which permits use and distribution in any medium, provided the original work is properly cited, the use is non-commercial and no modifications or adaptations are made.

What's new?

- This is the first prospective study to estimate the incidence of healing and prognostic factors associated with healing in people with a clinically infected diabetic foot ulcer, and specifically in the presence of competing risks of amputation and death.
- Outcomes for people with a clinically infected diabetic foot ulcer are poorer than previously thought; in the first year after presentation with an infected ulcer, 15.1% of our participants had died and 17.4% underwent at least partial lower extremity amputation.
- Healing incidence within 1 year was 44.5% (95% CI 38.9 to 50.1). Three key factors served as the best independent predictors of healing: PEDIS (perfusion, extent, depth, infection, sensation) perfusion grade; the absence of multiple foot ulcers; and shorter ulcer duration.

study [5,15] in people with a new diabetic foot ulcer presenting to one of 14 diabetic foot ulcer clinics, and for whom there was a 1-year follow-up, identified independent predictors of delayed healing as: older age; male sex; larger ulcer size; heart failure; inability to stand or walk without help; end-stage renal disease; peripheral neuropathy; and peripheral arterial disease [15]. Current guidelines for the management of infected diabetic foot ulcer [16–20] highlight the importance of prevention, early diagnosis and appropriate therapy delivered by a multidisciplinary team.

Our group recently completed a large, multicentre, cross-sectional study that compared culture results from swab and tissue specimens concurrently obtained from people with a diabetic foot ulcer with suspected infection (the Concordance in Diabetic Foot Ulcer Infection [CODIFI] study) [21]. This study collected comprehensive clinical details, including ulcer classification using both the PEDIS (perfusion, extent, depth, infection, sensation) [22] and the Wagner systems, and wound culture results. After gaining additional funding we obtained consent from participants to enrol them in a prospective observational study to assess the 12-month clinical outcomes of people with a clinically infected diabetic foot ulcer and to explore prognostic factors related to the incidence of wound healing.

Methods**Study design and participants**

The CODIFI study enrolled 400 participants between November 2011 and May 2013. Participants were recruited from community podiatry-led and multi-disciplinary diabetic foot ulcer clinics. Eligibility criteria were: diagnosis of diabetes mellitus; foot ulcer suspected of being infected based on clinical signs and symptoms using Infectious

Diseases Society of America/International Working Group on the Diabetic Foot [16,20] criteria and clinical judgement; plan to treat with antibiotics for their infected ulcer; and age ≥ 18 years with written consent provided.

Mid-way through recruitment, we obtained ethics approval for an amendment (November 2012) to enable us to conduct a case note review at 12 months after CODIFI study enrolment. This allowed us to obtain consent prospectively from all subsequently enrolled participants for the 12-month case note review and retrospectively from those previously enrolled in CODIFI who were still alive (by telephone using an ethically approved verbal consent script). We also obtained ethics approval to perform the case note review for enrolled participants who had since died.

Assessments/case note review

At enrolment for the CODIFI study [21] we recorded the following data: baseline demographics; diabetes history; clinical ulcer details (wound duration and site, aetiology, PEDIS and Wagner classification); type, if any, of antibiotic or antimicrobial treatment; and culture results from swab and tissue samples taken from the ulcer.

For the 12-month outcome assessment, research nurses or podiatrists at each participating centre conducted a detailed case note review seeking information on participant status and outcomes relating to the index ulcer, including: whether or not it healed, and if so, the date of healing; index ulcer recurrence; ipsilateral lower limb revascularization procedures; ipsilateral lower extremity amputation; or death in the 12 months following enrolment.

Statistical analysis**Sample size**

We expected to obtain consent from at least 200 participants. Assuming a diabetic foot ulcer healing rate of 50%, this would provide an estimate of healing with a precision (half width of the 95% CI) of $\pm 6.9\%$. It would also allow us to include a maximum of 10 parameter estimates in an exploratory prognostic model of time to healing [23].

Population

Analyses were conducted on the follow-up population, which consisted of the sample of all registered and consented CODIFI participants for whom a subsequent case note review was completed. To explore the generalizability of our results, baseline characteristics of all CODIFI participants included vs not included in the follow-up population were compared, with differences explored using the chi-squared and *t*-test as appropriate.

12-month outcomes

We summarized the outcome of study participants by ulcer-related events (wound healing, wound recurrence, lower

extremity amputation, limb revascularization, and death) as well as the time to the event. Using competing risk analysis (with cumulative incidence functions) we estimated the cumulative incidence of healing at 6 and 12 months. Because either amputation or death would preclude further observation of healing of the index ulcer, for unhealed ulcers we considered death and amputation to be competing risks; thus, we provided healing estimates (with 95% CIs) and cumulative incidence curves of the time to healing, in the presence of competing risks. We censored participants who were alive and without lower extremity amputation or healing of their index ulcer at 12 months post-baseline or the date of their case note review, if this took place before the 12-month follow-up.

Prognostic factors relating to healing

To explore the relationship of baseline factors with cumulative incidence (rate) of healing, we used a proportional sub-distribution hazards model [24] for competing risks data. Using exploratory univariable analyses (single explanatory variable), we first tested the association between each prespecified baseline prognostic factor (Table 1) separately with incidence of healing. Then, we explored associations between prognostic factors found to be significantly associated with healing using the chi-squared test. We then entered all prespecified factors in a preliminary multivariable (multiple explanatory variables) analysis to examine their independent effects on healing. Lastly, we entered factors that achieved statistical significance at the 10% level into a final multivariable model. For all analyses, we present hazard ratios (HRs) with 95% CIs and *P* values for prognostic factors we found significantly associated with healing at the 5% level.

Missing data

We assumed that missing data for participants in the follow-up population (e.g. date of healing, baseline covariates) were missing at random and imputed these values using multiple imputation [25]. Characteristics of participants with and without missing data were compared to explore the pattern of missing data. We performed separate imputation analyses according to the participants' healed status with an imputation model that included all factors considered in the prognostic model, centre, and other outcomes of interest (recurrence, revascularization, amputation and death). We made a total of 10 imputations using the Markov chain Monte Carlo method [26], and combined results using Rubin's rules [27].

Results

Consent and participant characteristics

We were able to include a total of 299 participants for the 12-month follow-up analyses in this study. Of these, investigators obtained consent from 250 participants (155 written

Table 1 Candidate prognostic factors for healing of infected diabetic foot ulcer

Baseline clinical characteristics	Baseline microbiology ⁺
<ul style="list-style-type: none"> • Age • Ulcer type (ischaemic or neuro-ischaemic / neuropathic) • Wagner system ulcer grade • PEDIS classification: perfusion (grade ≥ 2 indicates peripheral arterial disease), extent, depth, infection, sensation • Ulcer anatomical site • Incident or recurrent ulcer • Diabetes duration (in years) • HbA_{1c} level (collected as DCCT %) • Insulin therapy (yes or no) • Type of diabetes (1 or 2) • Wound duration (in months) • On antibiotic therapy* (yes or no) • Antimicrobial dressing on ulcer* 	<ul style="list-style-type: none"> • Presence of <i>any</i> reported pathogens • Identification of most prevalent pathogens: <ul style="list-style-type: none"> → Obligate anaerobes → Gram-positive cocci → Gram-negative bacilli → Enterobacteriaceae → Gram-positive bacilli → <i>Staphylococcus aureus</i> (all types) → Methicillin-resistant <i>S. aureus</i> → <i>Streptococcus</i> spp → <i>Enterococcus</i> spp → Coagulase-negative staphylococci → <i>Corynebacterium</i> spp → <i>Pseudomonas</i> spp

DCCT, Diabetes Control and Complications Trial.

⁺As reported in either swab or tissue sample

*This refers to participants who were reported as receiving antibiotic therapy, or having an antimicrobial dressing on their ulcer, at the time immediately prior to their baseline assessment and wound culture.

and 95 by telephone), and for 49 participants who had died but had clinical data available. Figure 1 summarizes the participant flow for this study. The main reason for exclusion was no response to our request for consent (55/400 participants, 14%). As shown in Table 2, baseline characteristics were largely similar for those included and excluded; however, participants included in the follow-up population were slightly older (mean age 64 vs 59 years; *P*=0.001), had more recurrent ulcers (30.4% vs 18.8%; *P*=0.0217), and had more serious infections (65.2% vs 53.5% grade 3 or 4 infection; *P*=0.0352).

Missing data

There were minimal missing data for participants included in the follow-up population. Date of healing was missing for 12 participants; 4% of all participants and 8.8% of healed participants. There was no clear evidence, however, of a pattern of missing data when comparing participants' baseline characteristics. There were also missing data for the baseline covariates diabetes duration, extent of ulcer, ulcer type and recurrent ulcer for two participants (0.7%), ulcer duration for four participants (1.3%), antimicrobial dressing and HbA_{1c} for five participants (1.7%) and previous

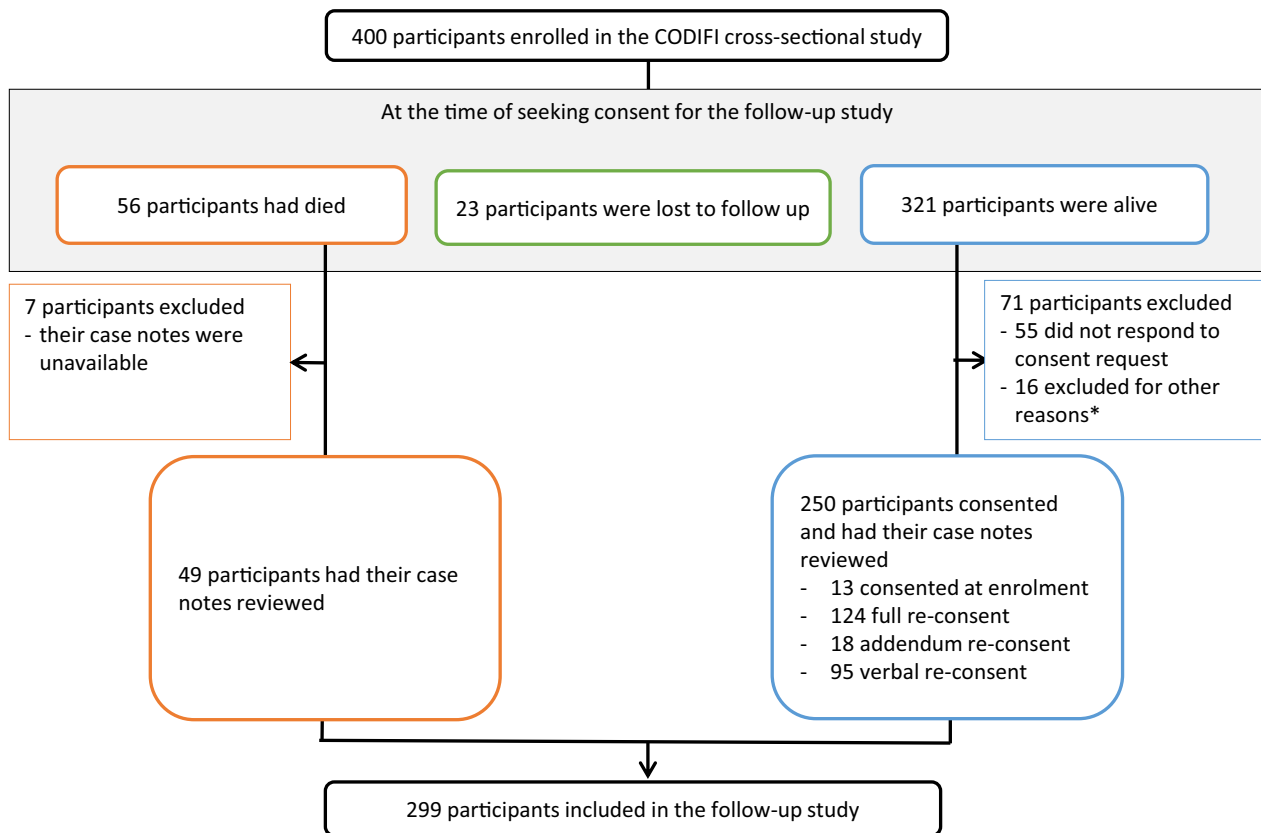


FIGURE 1 Participant flow diagram. *Other reasons for exclusion: consent was not attained for unknown reasons (11 participants); lacked capacity to consent (2 participants); provided incomplete consent (1 participant); declined to consent (1 participant); consented but case note review not completed (1 participant).

antibiotic regimen for 15 participants (5%). Given the low level of missing data and the use of multiple imputation based on all factors considered in the prognostic model to mitigate against bias, missing data in the long-term follow-up population are unlikely to have biased the statistical analysis.

12-month clinical outcomes

Table 3 summarizes the 12-month clinical outcomes, based on whether or not the index ulcer healed. Healing of the index ulcer at 12 months occurred in 136 participants (45.5%). Among these, ulcer recurrence was reported within the 12 months of follow-up in 13 participants (9.6%). A substantial minority of participants underwent a surgical procedure of the affected lower extremity, with 52 (17.4%) having an amputation of some part of the foot and 18 (6.0%) undergoing revascularization surgery, 10 (3.3%) of whom underwent both revascularization surgery and amputation. Furthermore, 45 participants (15.1%) had died within the 12 month follow-up period.

Time to healing and other clinical outcomes

For participants whose index ulcer healed, the median (range) time to healing was 4.5 (0.5–12.9) months ($n=136$,

missing $n=12$). Adverse events generally occurred relatively early in the clinical course of treatment. For those with a recurrence of the index ulcer, the median (range) time of recurrence was 1.7 (0.3–10.7) months post-healing. For those who underwent revascularization surgery, the median (range) time to surgery was 3.0 (0.1–9.5) months. For those who underwent a lower extremity amputation, the median (range) time to amputation was 2.0 (0.0–10.6) months. Finally, for those who died during the 12-month follow-up, the median (range) time to death was 5.6 (0.6–11.5) months.

The estimated incidence of healing, accounting for competing events of amputation or death, was 27.5% (95% CI 22.4, 32.5) at 6 months and 44.5% (95% CI 38.9, 50.1) at 12 months. Figure 2 shows the estimated cumulative incidence curves of the time to healing and the competing risks of death and amputation.

Prognostic factors associated with healing

Table 4 summarizes participants' healed status, estimated HRs (95% CI) and P values for baseline factors identified by the explorative univariable, preliminary multivariable and final multivariable analyses as significantly associated with the incidence of healing.

Table 2 Baseline characteristics of participants included vs not included in the 12-month observational study

Participant characteristics	Included in this study, N=299	Not included in this study, N=101
Mean (SD) age*, years	64.3 (12.8)	59.3 (14.2)
Sex: male, n (%)	233 (77.9)	83 (82.2)
Type of facility, n (%)		
Hospital ward	38 (12.7)	15 (14.9)
Outpatient clinic	241 (80.6)	78 (77.2)
Community clinic	20 (6.7)	8 (7.9)
Diabetes type, n (%)		
Type 1	40 (13.4)	18 (17.8)
Type 2	259 (86.6)	83 (82.2)
Mean (SD) diabetes duration, years	17.2 (11.1)	15.5 (10.5)
Mean (SD) HbA _{1c}		
mmol/mol	70.6 (24.51)	75.3 (26.20)
%	8.61 (2.24)	9.04 (2.40)
Current diabetes treatment, n (%)		
Oral hypoglycaemic	77 (26.6)	30 (31.3)
Insulin	126 (43.6)	42 (43.8)
Both insulin and oral hypoglycaemic	85 (29.4)	24 (25.0)
Other	1 (0.3)	0 (0.0)
None	10 (3.3)	5 (5.0)
Foot with index ulcer, n (%)		
Right foot	150 (50.2)	55 (54.5)
Number of ulcers on index foot, n (%)		
Single ulcer	222 (74.2)	82 (81.2)
Multiple ulcers	77 (25.8)	19 (18.8)
Index ulcer location, n (%)		
Apex (i.e. tip of toe)	31 (10.4)	16 (15.8)
Interdigital	18 (6.0)	7 (6.9)
Plantar	133 (44.5)	39 (38.6)
Dorsum	38 (12.7)	18 (17.8)
Digital	70 (23.4)	20 (19.8)
Other	7 (2.3)	1 (1.0)
Duration of index ulcer, months		
Median (IQR)Range	1.8 (0.7 to 6.0) (0.1 to 75.0)	1.8 (0.7 to 4.6) (0.2 to 144.0)
Ulcer recurrence [†] , n (%)		
Incident (first)	206 (68.9)	82 (81.2)
Recurrent (repeat)	91 (30.4)	19 (18.8)
Ulcer type, n (%)		
Ischaemic or neuro-ischaemic	142 (47.5)	54 (53.5)
Neuropathic only	155 (51.8)	47 (46.5)
PEDIS classification, n (%)		
Perfusion		
Grade 1: no symptoms/signs of PAD	147 (49.2)	53 (52.5)
Grade 2: symptoms or signs of PAD, no critical limb ischaemia	146 (48.8)	46 (45.5)
Grade 3: critical limb ischaemia	6 (2.0)	2 (2.0)
Depth/tissue loss		
Grade 1: superficial full-thickness ulcer not penetrating structures deeper than the dermis	96 (32.1)	35 (34.7)
Grade 2: ulcer penetrating below dermis to subcutaneous structures	100 (33.4)	34 (33.7)
Grade 3: all subsequent layers of foot, including bone/joint	103 (34.4)	32 (31.7)
Infection		
Grade 1: no symptoms/signs of inflammation	0 (0.0)	2 (2.0)
Grade 2: inflammation of skin/subcutaneous tissue only	104 (34.8)	45 (44.6)
Grade 3: extensive erythema deeper than skin/subcutaneous tissue	185 (61.9)	52 (51.5)
Grade 4: systemic inflammatory response syndrome	10 (3.3)	2 (2.0)
Sensation		
Grade 1: no loss of protective sensation	20 (6.7)	7 (6.9)
Grade 2: loss of protective sensation	279 (93.3)	94 (93.1)
Wagner classification, n (%)		
Grade 1: superficial diabetic ulcer	104 (34.8)	32 (31.7%)
Grade 2: ulcer extension ligament, tendon, joint capsule or deep fascia without abscess or osteomyelitis	93 (31.1)	41 (40.6)
Grade 3: deep ulcer with abscess, osteomyelitis or joint sepsis	96 (32.1)	26 (25.7)

Table 2 (Continued)

Participant characteristics	Included in this study, N=299	Not included in this study, N=101
Grade 4: gangrene localized to portion of forefoot or heel	5 (1.7)	2 (2.0)
Grade 5: extensive gangrenous involvement of the entire foot	1 (0.3)	0 (0.0)
Antimicrobial dressing on ulcer, n (%)	175 (58.5)	66 (65.3)
Currently on antibiotic therapy, n (%)	139 (46.5)	48 (47.5)
Pathogens reported, n (%)	263 (88.0)	90 (89.1)

PAD, peripheral arterial disease.

**t*-test for difference in age between groups $P=0.001$.

[†]Chi-squared test for association between ulcer recurrence and group $P=0.0217$

[‡]Chi-squared test for association between infection grades (Grade 1/2 vs 3/4) and group $P=0.0352$.

Table 3 Cross-tabulation of index ulcer healing status against other 12-month clinical outcomes

Clinical outcome	Index ulcer healed, n (%)	Index ulcer not healed, n (%)	Total, n (%)
Participant died			
Yes	8 (2.7)	37 (12.4)	45 (15.1)
No	128 (42.8)	126 (42.1)	254 (84.9)
Total	136 (45.5)	163 (54.5)	299 (100.0)
Amputation (of/ on the index foot)?			
Yes	12 (4.0)*	40 (13.4)	52 (17.4)
No	124 (41.5)	123 (41.1)	247 (82.6)
Total	136 (45.5)	163 (54.5)	299 (100.0)
Revascularization surgery?			
Yes	8 (2.7)	10 (3.3)	18 (6.0)
No	128 (42.8)	153 (51.2)	281 (94.0)
Total	136 (45.5)	163 (54.5)	299 (100.0)
Index ulcer recurred?			
Yes	13 (9.6)	NA	13 (4.3)
No	123 (90.4)	NA	123 (90.4)
Total	136 (100.0)	NA	136 (100.0)

*For two participants amputation occurred after reported healing of the index ulcer due to another non-index ulcer on the index foot, either present at baseline or developed subsequently. For 10 participants amputation occurred prior to healing of the index ulcer with the amputation being on the index foot but of a different site to that of the index ulcer due to another non-index ulcer on the index foot, either present at baseline or developed subsequently.

Univariable analyses showed that 11 of the prespecified factors were potentially associated (based on a P value <0.1) with the incidence of healing of the index ulcer. The incidence of healing was higher if there was only one ulcer (rather than multiple) on the index foot, or if coagulase-negative staphylococci were identified from a culture of the ulcer. The incidence of healing was lower if the index ulcer: (i) had a PEDIS perfusion grade of ≥ 2 ; (ii) was classified as ischaemic; (iii) had been present for ~ 2 months or longer prior to CODIFI enrolment; (iv) had a Wagner grade of ≥ 2 ; (v) had a PEDIS depth grade of ≥ 2 ; (vi) had a PEDIS infection

grade of ≥ 3 ; (vii) was covered with an antimicrobial dressing at baseline; or (viii) had methicillin-resistant *Staphylococcus aureus* (MRSA) identified from the ulcer culture (Table 4).

When fitting all potential prognostic factors into a multivariable proportional sub-distribution hazards model (a preliminary analysis), then into a final analysis model, only four remained statistically significantly associated with the incidence of healing (excluding age; Table 4). The incidence of healing was higher if: (i) there was only one ulcer on the index foot (HR 1.9, 95% CI 1.18 to 3.06); or (ii) coagulase-negative staphylococci was identified from the ulcer culture (HR 1.53, 95% CI 0.98 to 2.40). The incidence of healing was lower if the index ulcer: (i) had a PEDIS perfusion grade of ≥ 2 ; (HR 0.37, 95% CI 0.25 to 0.55) or (ii) had been present for ~ 2 months or longer prior to CODIFI enrolment (HR 0.55, 95% CI 0.39 to 0.77).

Associations between factors

Table 5 summarizes pairwise associations between factors related to the incidence of healing. Several factors that were statistically significantly associated with healing in the univariable analysis were no longer statistically significant in the multivariable analysis (ulcer type, PEDIS depth, PEDIS infection, Wagner grade, antimicrobial dressing at baseline, and MRSA isolation).

Pairwise associations between various factors that met statistical significance ($P < 0.05$; cross-tabulations quantifying these associations are presented in Table S1) included ulcer type, and PEDIS perfusion, PEDIS depth, PEDIS infection and Wagner grades. Among these, only PEDIS perfusion grade remained statistically significant in the multivariable analysis, with a higher grade associated with ischaemic ulcers, greater depth, more severe infection and higher Wagner grades. Ischaemic ulcers were also associated with having multiple ulcers on the index foot, a longer-duration ulcer, and a lower rate of isolation of coagulase-negative staphylococci from the ulcer culture, all of which were statistically significant in the multivariable analysis. The presence of an antimicrobial dressing on the ulcer at baseline did not remain statistically significant in the multivariable

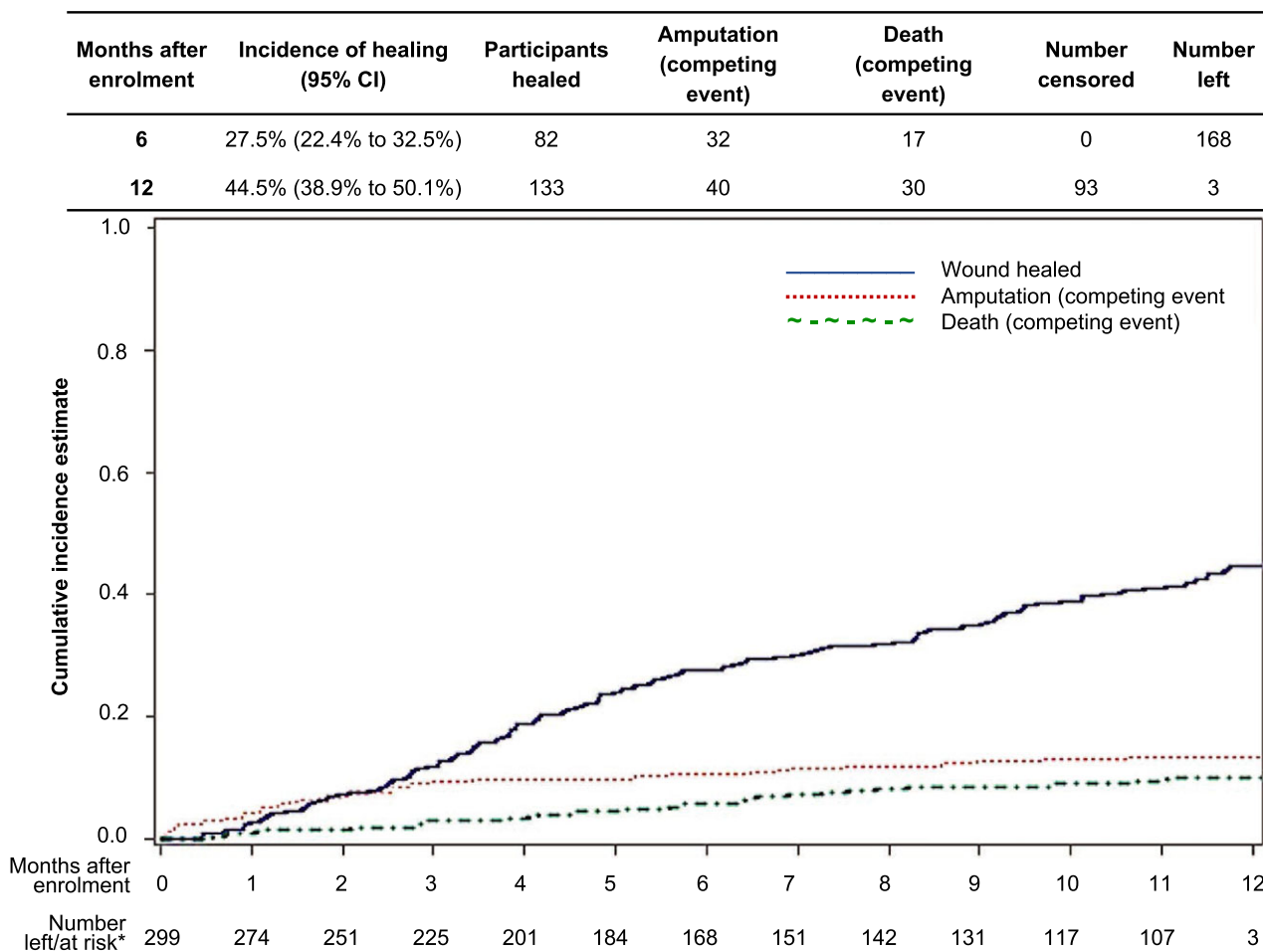


FIGURE 2 Healing estimates and cumulative incidence functions of the time to healing in the presence of competing risks of death or amputation. *This refers to the number of participants left in the 'risk' set consisting of those uncensored without an event (healing, death, or amputation).

analysis, but was associated with a higher perfusion grade and a longer ulcer duration. Isolation of MRSA from the ulcer culture was associated with ulcer type, and was more frequently reported from cultures of ischaemic ulcers. Interestingly, isolation on ulcer culture of MRSA was inversely associated with isolation of coagulase-negative staphylococci, each being only reported in the absence of the other.

Discussion

In this large, prospective study with 12 months' follow-up, we found that three key factors served as the best independent predictors of healing of an infected diabetic foot ulcer: the PEDIS perfusion grade; the absence of multiple foot ulcers; and a shorter ulcer duration. A lower perfusion grade suggests the presence of peripheral arterial disease, which previous studies have shown to be an important predictor of poor outcomes (i.e. lack of healing and lower extremity amputation) in people with a diabetic foot ulcer [5,13–15]. In the present study, among the five PEDIS domains, perfusion (indicating peripheral arterial disease) was shown to be the only independent predictor of healing. Ulcer

duration and presence of multiple ulcers have also been reported as significant predictors for non-healing in other studies [28,29].

The participants in the present study with a clinically suspected diabetic foot ulcer infection had poorer outcomes than reported in previously published studies, which enrolled people with various types of diabetic foot ulcers [5,13–15]. We found a 12-month incidence of healing of 44.5%, while Prompers *et al.* [5], Ince *et al.* [13] and Jeffcoate *et al.* [14] reported healing rates at 12 months of 77% and 68.3%, respectively. In addition, we found that during 12 months of follow-up for their infected diabetic foot ulcer, 17.4% of our participants underwent at least partial lower extremity amputation and 15.1% died, compared with 22% for amputation and 6% deaths in the study by Prompers *et al.* [5] and 5.9% for amputation or death (reported as combined) in the study by Ince *et al.* [13]. These differences may have arisen because we specifically recruited people with a suspected infected diabetic foot ulcer, whereas Prompers *et al.* [5] included only people presenting with a new foot ulcer and excluded those treated at the participating centres for an ulcer on the ipsilateral foot during the previous 12

Table 4 Healing status by baseline factors, univariable and multivariable analysis for factors with a significant univariable association with the incidence of healing

Baseline factor*	Healed (%)	Not healed (%)	Reference level†	Exploratory univariable analysis HR (95%CI) P	Preliminary multivariable analysis HR (95%CI) P	Final multivariable analysis HR (95% CI) P
Ulcer type						
Ischaemic or neuro-ischaemic	49 (34.5)	93 (65.5)	Neuropathic	0.5 (0.35 to 0.71) P<0.0001	1.09 (0.59 to 2.02) P=0.7837	
Neuropathic only	85 (54.8)	70 (45.2)				
Wagner grade						
Grade 1	56 (53.8)	48 (46.2)	Grade 1			
Grade 2	41 (44.1)	52 (55.9)		0.65 (0.44 to 0.98) P=0.0397	0.56 (0.25 to 1.23) P=0.1477	
Grade 3, 4 or 5	39 (38.2)	63 (61.8)		0.55 (0.36 to 0.82) P=0.0038	0.59 (0.25 to 1.37) P=0.2159	
PEDIS: perfusion						
Grade 1	85 (57.8)	62 (42.2)	Grade 1	0.44 (0.31 to 0.62) P<0.0001	0.43 (0.22 to 0.83) P=0.0113	0.37 (0.25 to 0.55) P<0.0001
Grade ≥2	51 (33.6)	101 (66.4)				
PEDIS: depth						
Grade 1	51 (53.1)	45 (46.9)	Grade 1			
Grade 2	47 (47.0)	53 (53.0)		0.70 (0.47 to 1.05) P=0.0843	1.61 (0.74 to 3.49) P=0.2311	
Grade 3	38 (36.9)	65 (63.1)		0.54 (0.35 to 0.83) P=0.0046	1.16 (0.47 to 2.91) P=0.7451	
PEDIS: infection‡						
Grade 2	55 (52.9)	49 (47.1)	Grade 2	0.65 (0.46 to 0.91) P=0.0135	0.91 (0.59 to 1.41) P=0.6831	
Grade 3	78 (42.2)	107 (57.8)				
Grade 4	3 (30.0)	7 (70.0)				
Wound duration						
<56 days	77 (53.8)	66 (46.2)	<56 days	0.54 (0.39 to 0.76) P=0.0004	0.46 (0.30 to 0.70) P=0.0003	0.55 (0.39 to 0.77) P=0.0005
≥56 days	56 (36.8)	96 (63.2)				
Prior antimicrobial dressing on ulcer						
Yes	69 (39.4)	106 (60.6)	No	0.65 (0.46 to 0.91) P=0.0123	0.77 (0.52 to 1.14) P=0.1934	
No	64 (53.8)	55 (46.2)				
Only one (rather than ≥2) ulcer on index foot						
Yes	113 (50.9)	109 (49.1)	No	1.96 (1.25 to 3.07) P=0.0034	1.91 (1.15 to 3.17) P=0.0122	1.90 (1.18 to 3.06) P=0.0081
No	23 (29.9)	54 (70.1)				
Coagulase-negative <i>Staphylococcus</i> reported						
Yes	24 (63.2)	14 (36.8)	No	1.69 (1.11 to 2.59) P=0.0147	1.98 (1.08 to 3.61) P=0.0270	1.53 (0.98 to 2.40) P=0.0603
No	112 (42.9)	149 (57.1)				
Methicillin-resistant <i>S. aureus</i> reported						
Yes	8 (29.6)	19 (70.4)	No	0.50 (0.26 to 0.97) P=0.0419	0.67 (0.28 to 1.63) P=0.3802	
No	128 (47.1)	144 (52.9)				
Age (continuous - per 5 year increase)§				1.02 (0.95 to 1.09) P=0.5887	1.11 (1.02 to 1.22) P=0.0169	1.11 (1.03 to 1.19) P=0.0081

HR, hazard ratio. Bold numbers indicate the direction in which the event is more likely to occur (healing or not healing).

*The following factors reported in Table 1 were also included in the exploratory univariable and preliminary multivariable analysis, however, no significant associations were detected at the 10% level: diabetes duration; diabetes type: type 2 vs type 1; insulin therapy; HbA_{1c}; ulcer extent; PEDIS sensation grade; incident or recurrent ulcer; ulcer location; previous antibiotic therapy; any reported pathogens; overall anaerobes; Gram-positive cocci; Gram-negative bacilli; Enterobacteriaceae; Gram-positive bacilli; MSSA; Streptococcus; Enterococcus excluding vancomycin resistant, *Corynebacterium*; *Pseudomonas*.

†The reference level refers to the level of the factor used as the reference in the HRs, i.e. participants with ischaemic ulcers compared with the reference neuropathic ulcers have a lower rate of healing with a HR of 0.5 in univariable analysis.

‡PEDIS infection grades 3 and 4 were combined in the analysis.

§The association with age was not supported when age was explored categorically at various 'splits' in the data.

months and those with a life expectancy of <1 year; compared with our participants, we would expect their population to have had a better prognosis from the outset. Ince *et al.* [13] recruited participants from a heterogeneous clinic population. They also used conventional survival

analyses to estimate healing rates, which neither accounted nor adjusted for the competing events of amputation or death; this probably overestimates the incidence of healing.

A more complex issue is the association we found between culturing coagulase-negative staphylococci and higher

Table 5 Association (*P* values) between factors found to be statistically significant in the univariable analysis

Ulcer type	Wagner grade	PEDIS perfusion	PEDIS depth	PEDIS infection	Single ulcer	Wound duration	Antimicrobial dressing	MRSA cultured	CoNS cultured	
	<0.0001	<0.0001 <0.0001	<0.0001 <0.0001 <0.0001	0.0036 <0.0001 0.0002	0.0300	0.0219 0.0423	0.0012 <0.0001	0.0042	0.0453	Ulcer type
				<0.0001						Wagner grade
										PEDIS perfusion
										PEDIS Depth
										PEDIS Infection
							0.0201			Single ulcer
										Wound duration
									0.0376	Antimicrobial dressing
										MRSA cultured
										CoNS cultured

CoNS, *Coagulase-negative Staphylococcus*

Numbers are the *P* values of significant associations between factors.

Note that shaded cells in the top row and final column indicate factors that were no longer statistically significant in the multivariable analysis (ulcer type, Wagner grade, PEDIS dept, PEDIS infection, presence of antimicrobial dressing, MRSA cultured). Whilst unshaded cells indicate factors (PEDIS perfusion, single ulcer, would duration, CoNS cultured) that remained significant. In the body of the table, unshaded cells containing a *P* value indicate associations where neither of the factors remained significant in the multivariable model, whilst unshaded cells indicate associations where at least one of the two factors remained significant in the multivariable model. Cells without a *P* value indicate non-significant associations at the 5% level.

incidence of healing. This is a group of relatively avirulent organisms, and the fact that their presence was inversely related to the presence of the more virulent MRSA may explain the association with healing. There were no statistically significant associations between ulcer healing and any other ulcer culture results, including whether or not the microbiology laboratory reported growth of any microorganisms. Unlike other studies, we found no significant association between the incidence of healing and prognostic factors such as glycaemic control [30], duration of diabetes [5,13], ulcer site, sex [15], wound area or wound depth [28]. Noteworthy is that poor arterial perfusion often leads to 'punched out' ulcers that are likely to be deeper than non-ischaeamic ulcers [23]. Our analyses suggest that it is the poor perfusion (peripheral arterial disease) rather than the depth of the ulcer that leads to impaired healing.

We also found a higher incidence of ulcer healing among older participants, but this finding was not consistently supported when we explored age categorically at various 'splits' in the data. As there is no apparent biological basis for this finding or support from results of other studies [31], we think it is likely to be spurious.

To our knowledge, this is the first prospective study of people with infected diabetic foot ulcers to estimate methodically the cumulative incidence of healing, to report the time to healing, and to identify factors associated with the incidence of healing while adjusting for competing risks. Taking these factors into consideration, we found that conventional survival analysis would have overestimated the incidence of healing in the present study by almost 10%.

As this study recruited participants from 25 centres across England, ranging from large teaching hospitals to small primary healthcare centres, these results are likely to be generalizable to outcomes of diabetic foot ulcers across England, and perhaps in other higher-income countries. This is also the first large study of outcomes of diabetic foot ulcers conducted since publication of the 2011 UK National Institute for Health and Care Excellence (NICE) guidelines on management of diabetic foot problems [17], which have been updated by new guidelines [19]. The poor outcomes we found in the present study may suggest that either the guideline recommendations have not been widely implemented or they are not very effective. The current NICE guidelines [19] recommend placing systems across all care settings designed to prevent and manage diabetic foot problems; however, a recent UK national audit [32] found that the implementation of the NICE guidelines was not universal.

Diagnosing whether or not a diabetic foot ulcer is infected can be difficult, especially in the presence of peripheral neuropathy or limb ischaemia, but authorities generally agree that it should be based on finding signs or symptoms of inflammation, purulence and possibly other 'secondary' clinical findings [16,18]. Of the participants enrolled in the main CODIFI study [21], 12% had a swab or tissue sample growing no pathogens isolated, but almost half were receiving antibiotic therapy and two-thirds were using an antimicrobial dressing. Furthermore, deficiencies in specimen collection, transport or processing may have led to false-negative cultures.

The present study has three key limitations. First, our 12-month case note review was an extension to the original

CODIFI study [21], resulting in incomplete follow-up for those who could not be re-contacted, did not re-consent for the study extension or where case notes were unavailable, leading to 25% of participants lost to follow-up. We did not include participants lost to follow-up because of the assumptions required in order to impute data for multiple outcomes (healing, amputation, death), and the timing of these outcomes. The characteristics of participants included and participants not included were largely similar, but participants included were slightly older, with more recurrent ulcers and more severe infections.

Second, as we did not require retrospective consent for case note review of participants who had died prior to our ethics amendment for this study, attrition bias may have contributed to the slightly older age, more severe infection and the overall inflated death rate. Among the 377 participants for whom we had follow-up data and known survival status at the point of consent, 56 (14.9%) had died. As this includes deaths outside of the 12-month follow-up period, we believe the minimum death rate within the 12-month follow-up period was 13% (49/377) and the maximum 16.4% (49/299).

Third, we do not have 12-month data on whether or not infection resolved. Although resolution of infection is important for ulcer healing, our study design focused on healing, and the consequences of non-healing. Our case note review included data on antibiotics prescribed to participants prior to baseline sampling and immediately after sampling. This allowed us to assess the relationship between the various outcomes of interest and the pathogens isolated from the diabetic foot ulcer, as well as the antibiotic regimens prescribed. We think it would be useful if a future prospective study explored the relationship between healing of an infected ulcer and the appropriateness of anti-infective therapy, determined by whether the antibiotic therapy was active against the isolated organisms.

In conclusion, the present study has confirmed that people with a clinically infected diabetic foot ulcer have a poor prognosis. Our results also confirmed that the presence of limb ischaemia, multiple foot ulcers and a longer ulcer duration were most predictive of poor 12-month outcomes. These findings should be useful to clinicians in various care settings to help identify people most at risk of poor outcomes who may need prioritization for increased interventions or referral to specialist centres. Our findings on prognostic factors or diabetic foot ulcer healing should also be useful to inform the design and analysis of future clinical studies.

Funding sources

This paper presents independent research funded by the National Institute for Health Research (NIHR) Health Technology Assessment Programme, HTA 09/75/01. The views expressed are those of the authors and not necessarily those of the National Health Service, the NIHR or the

Department of Health. The funder was not involved in the preparation of the study protocol, the running of the study or the analysis or preparation of this paper.

Competing interests

E.A.N. was a member of the HTA Commissioning Board (2011–2015). The remaining authors have no competing interests.

Acknowledgements

The authors wish to thank the members of the study steering committee: Prof. John Deeks, Prof. Rose Cooper, Dr Roger Gadsby, Prof. Anne-Maree Keenan and Mrs Christine Thomas, who was the patient representative. The authors wish to thank the following researchers for their contribution in this study: Prof. Christopher Dowson who was a co-applicant on the study grant; Dr Michael Edmonds who was a co-applicant on the study grant; and Mr Tom Dickie who was a co-applicant on the study grant and contributed patients to the study. The authors also wish to thank the following research collaborators across 25 hospitals, and their teams: Prof. Peter Vowden (Bradford Teaching Hospitals, Bradford), Dr Kilimangalam Narayanan (Queen Elizabeth Hospital, Gateshead), Prof. Satyan Rajbhandari (Chorley and South Ribble Hospital, Chorley), Dr Cuong Dang (North Manchester General Hospital, Manchester), Dr Deirdre Maguire (Harrogate District Hospital, Harrogate), Dr Robert Moisey (Huddersfield Royal Infirmary, Huddersfield), Dr Simon Ashwell (James Cook University Hospital, Middlesbrough), Dr Frank Bowling (Manchester Royal Infirmary, Manchester), Dr Varadarajan Baskarn (New Cross Hospital, Wolverhampton), Dr Ketan Dhatariya (Norfolk and Norwich University Hospital, Norwich), Dr Ryan D'Costa (Pinderfields General Hospital, Wakefield), Dr Mujahid Saeed (Queen Elizabeth Hospital, Birmingham), Dr Sunil Sharma (Queen Elizabeth Hospital, King's Lynn), Dr Paul Smith (Royal Lancaster Infirmary, Lancaster), Dr Deepak Bhatnagar (Royal Oldham Hospital, Oldham), Dr Khaled Dukhan (South Tyneside District Hospital, South Shields), Dr Jonathan Bodansky (St James's University Hospital, Leeds), Dr Edward Jude (Tameside General Hospital, Lancashire), Dr Harpal Randeve (University Hospital Coventry, Coventry), Dr Yashica Nathan (University Hospital Lewisham, Lewisham), Dr Fahmy Hanna (University Hospital of North Staffordshire, Stoke-on-Trent), Dr Sony Anthony (University Hospital of North Tees, Stockton-on-Tees) and Dr Parag Singhal (Weston General Hospital, Weston-Super-Mare).

Author contributions

All authors also contributed to the writing of this manuscript and read and approved the final manuscript. Further to this

contribution, E. A. Nelson is the lead grant holder. M. Ndosi is the clinical coordinator for the 12-month follow up study and drafted this manuscript. A. Wright-Hughes is the trial statistician and conducted the analysis and drafted this manuscript. S. Brown is a co-applicant on the study grant and the statistical guarantor. M. Backhouse was the clinical coordinator for the initial CODIFI study. M. Bhogal is the trial manager. C. Reynolds is the data manager. B. A. Lipsky, P. Vowden, E. Jude, and J. Nixon were co-applicants on the study grant. All authors have fulfilled the four ICMJE authorship criteria.

References

- Singh N, Armstrong DG, Lipsky BA. Preventing foot ulcers in patients with diabetes. *JAMA* 2005; **293**: 217–228.
- Brownrigg JRW, Davey J, Holt PJ, Davis WA, Thompson MM, Ray KK, et al. The association of ulceration of the foot with cardiovascular and all-cause mortality in patients with diabetes: a meta-analysis. *Diabetologia* 2012; **55**: 2906–2912.
- Vileikyte L, Rubin RR, Leventhal H. Psychological aspects of diabetic neuropathic foot complications: an overview. *Diabetes Metab Res Rev* 2004; **20**(Suppl. 1): S13–18.
- Boulton AJ, Kirsner RS, Vileikyte L. Clinical practice. Neuropathic diabetic foot ulcers. *N Engl J Med* 2004; **351**: 48–55.
- Prompers L, Huijberts M, Schaper N, Apelqvist J, Bakker K, Edmonds M, et al. Resource utilisation and costs associated with the treatment of diabetic foot ulcers. Prospective data from the Eurodiale Study. *Diabetologia* 2008; **51**: 1826–1834.
- Prompers L, Huijberts M, Apelqvist J, Jude E, Piaggese A, Bakker K, et al. High prevalence of ischaemia, infection and serious comorbidity in patients with diabetic foot disease in Europe. Baseline results from the Eurodiale study. *Diabetologia* 2007; **50**: 18–25.
- Faglia E, Favales F, Morabito A. New ulceration, new major amputation, and survival rates in diabetic subjects hospitalized for foot ulceration from 1990 to 1993: a 6.5-year follow-up. *Diabetes Care* 2001; **24**: 78–83.
- Moulik PK, Mtonga R, Gill GV. Amputation and mortality in new-onset diabetic foot ulcers stratified by etiology. *Diabetes Care* 2003; **26**: 491–494.
- Ghanassia E, Villon L, Thuan Dit Dieudonne JF, Boegner C, Avignon A, Sultan A. Long-term outcome and disability of diabetic patients hospitalized for diabetic foot ulcers: a 6.5-year follow-up study. *Diabetes Care* 2008; **31**: 1288–1292.
- Morbach S, Furchert H, Groblinghoff U, Hoffmeier H, Kersten K, Klauke GT, et al. Long-term prognosis of diabetic foot patients and their limbs: amputation and death over the course of a decade. *Diabetes Care* 2012; **35**: 2021–2027.
- Holman N, Young RJ, Jeffcoate WJ. Variation in the recorded incidence of amputation of the lower limb in England. *Diabetologia* 2012; **55**: 1919–1925.
- Kerr M. Foot care for people with diabetes: the economic case for change. NHS Diabetes Kidney Care, 2012.
- Ince P, Kendrick D, Game F, Jeffcoate W. The association between baseline characteristics and the outcome of foot lesions in a UK population with diabetes. *Diabet Med* 2007; **24**: 977–981.
- Jeffcoate WJ, Chipchase SY, Ince P, Game FL. Assessing the outcome of the management of diabetic foot ulcers using ulcer-related and person-related measures. *Diabetes Care* 2006; **29**: 1784–1787.
- Pickwell KM, Siersma VD, Kars M, Holstein PE, Schaper NC. Eurodiale consortium. Diabetic foot disease: impact of ulcer location on ulcer healing. *Diabetes Metab Res Rev* 2013; **29**: 377–383.
- Lipsky BA, Berendt AR, Cornia PB, Pile JC, Peters EJ, Armstrong DG, et al. 2012 Infectious Diseases Society of America clinical practice guideline for the diagnosis and treatment of diabetic foot infections. *Clin Infect Dis* 2012; **54**: e132–173.
- NICE. Diabetic foot problems: Inpatient management of diabetic foot problems. Manchester: National Institute for Health and Clinical Excellence, 2011.
- Lipsky BA, Aragon-Sanchez J, Diggle M, Embil J, Kono S, Lavery L, et al. IWGDF guidance on the diagnosis and management of foot infections in persons with diabetes. *Diabetes Metab Res Rev* 2016; **32**(Suppl 1): 45–74.
- NICE. Diabetic foot problems: prevention and management. *Nice Guideline NG19*. London: National Institute for Health and Care Excellence, 2015.
- Schaper NC, Van Netten JJ, Apelqvist J, Lipsky BA, Bakker K, International Working Group on the Diabetic Foot. Prevention and management of foot problems in diabetes: A Summary Guidance for Daily Practice 2015, based on the IWGDF guidance documents. *Diabetes Res Clin Pract* 2017; **124**: 84–92.
- Nelson A, Backhouse M, Wright-Hughes A, Bhogal M, Brown S, Nixon J, et al. Extent of disagreement and difference between tissue and swab samples from infected diabetic foot ulcers: the CODIFI Study. *Diabetologia* 2014; **57**: S471–S472.
- Schaper N. Diabetic foot ulcer classification system for research purposes: a progress report on criteria for including patients in research studies. *Diabetes Metab Res Rev* 2004; **20**: S90–S95.
- Irving G, Hargreaves S. Venous and arterial leg ulceration. *InnovAiT* 2009; **2**: 415–422.
- Fine JP, Gray RJ. A proportional hazards model for the subdistribution of a competing risk. *J Am Stat Assoc* 1999; **94**: 496–509.
- Little RJA, Rubin DB. *Statistical analysis with missing data*, 2nd ed. Chichester: Wiley, 2002.
- Brooks S, Gelman A, Jones G, Meng X-L. *Handbook of Markov Chain Monte Carlo*. Monte Carlo: CRC Press, 2011.
- Rubin DB. *Multiple Imputation for Nonresponse in Surveys*. New York: John Wiley & Sons Inc, 1987.
- Margolis DJ, Allen-Taylor L, Hoffstad O, Berlin JA. Diabetic neuropathic foot ulcers: the association of wound size, wound duration, and wound grade on healing. *Diabetes Care* 2002; **25**: 1835–1839.
- Fife CE, Horn SD, Smout RJ, Barrett RS, Thomson B. A Predictive Model for Diabetic Foot Ulcer Outcome: The Wound Healing Index. *Adv Wound Care* 2016; **5**: 279–287.
- Christman AL, Selvin E, Margolis DJ, Lazarus GS, Garza LA. Hemoglobin A1c predicts healing rate in diabetic wounds. *J Invest Dermatol* 2011; **131**: 2121–2127.
- Prompers L, Schaper N, Apelqvist J, Edmonds M, Jude E, Mauricio D, et al. Prediction of outcome in individuals with diabetic foot ulcers: focus on the differences between individuals with and without peripheral arterial disease. The EURODIALE Study. *Diabetologia* 2008; **51**: 747–755.
- Health and Social Care Information Centre. *National Diabetes Foot Care Audit Report 2014–2015*. London: Health and Social Care Information Centre, 2016.

Supporting Information

Additional Supporting Information may be found in the online version of this article:

Table S1. Cross tabulations of factors with a significant association ($P < 0.005$).