



Deposited via The University of Sheffield.

White Rose Research Online URL for this paper:

<https://eprints.whiterose.ac.uk/id/eprint/128748/>

Version: Accepted Version

Article:

Zavvos, V., Buxton, A.T., Evans, C. et al. (2017) A prospective, proteomics study identified potential biomarkers of encapsulating peritoneal sclerosis in peritoneal effluent. *Kidney International*, 92 (4). pp. 988-1002. ISSN: 0085-2538

<https://doi.org/10.1016/j.kint.2017.03.030>

Reuse

This article is distributed under the terms of the Creative Commons Attribution-NonCommercial-NoDerivs (CC BY-NC-ND) licence. This licence only allows you to download this work and share it with others as long as you credit the authors, but you can't change the article in any way or use it commercially. More information and the full terms of the licence here: <https://creativecommons.org/licenses/>

Takedown

If you consider content in White Rose Research Online to be in breach of UK law, please notify us by emailing eprints@whiterose.ac.uk including the URL of the record and the reason for the withdrawal request.



A prospective, proteomics study identified potential biomarkers of encapsulating peritoneal sclerosis in peritoneal effluent.

Journal:	<i>Kidney International</i>
Manuscript ID	KI-05-16-0757.R2
Article Type:	Clinical Investigation
Date Submitted by the Author:	14-Mar-2017
Complete List of Authors:	Zavvos, Vasileios; University of Patras School of Medicine, Department of Nephrology; Academic Nephrology Unit & Sheffield Kidney Institute, University of Sheffield, UK Buxton, Anthony; Academic Nephrology Unit & Sheffield Kidney Institute, University of Sheffield, UK Evans, Caroline; Proteomics Unit, Chemical Engineering, University of Sheffield Lambie, Mark; Institute of Applied Clinical Sciences, Keele University, UK Davies, Simon; Institute of Applied Clinical Sciences, Keele University, UK Topley, Nicholas; Cardiff University, School of Medicine, Institute of Nephrology Wilkie, Martin; Academic Nephrology Unit & Sheffield Kidney Institute, University of Sheffield, UK Summers, Angela; Kidney Research Laboratories, Manchester Royal Infirmary Brenchley, Paul; Kidney Research Laboratories, Manchester Royal Infirmary Goumenos, DS; Department of Nephrology, University Hospital of Patras, Patras, Greece johnson, tim; Sheffield University, Sheffield Kidney Institute
Keywords:	peritoneal dialysis, proteomic analysis, peritoneal membrane
Subject Area:	Dialysis

SCHOLARONE™
Manuscripts

[QUERY TO AUTHOR: title and abstract rewritten by Editorial Office - not subject to change]

A prospective, proteomics study identified potential biomarkers of encapsulating peritoneal sclerosis in peritoneal effluent.

Vasileios Zavvos^{1,2}, Anthony T Buxton², Caroline Evans³, Mark Lambie⁴, Simon J Davies⁴, Nicholas Topley⁵, Martin Wilkie², Angela Summers⁶, Paul Brenchley⁶, Dimitrios S Goumenos¹ & Timothy S Johnson².

¹ Department of Nephrology, University Hospital of Patras, Greece

² Academic Nephrology Unit & Sheffield Kidney Institute, University of Sheffield, UK

³ Proteomics Unit, Chemical Engineering, University of Sheffield

⁴ Institute of Applied Clinical Sciences, Keele University, UK

⁵ Wales Kidney Research Unit, Division of Infection and Immunity, Cardiff University School of Medicine, Cardiff, UK

⁶ Kidney Research Laboratories, Manchester Royal Infirmary

Corresponding Author

Professor Tim Johnson

Academic Nephrology Unit & Sheffield Kidney Institute

Room K120, Department of Infection and Immunity,

The Medical School

University of Sheffield

Beech Hill Road

Sheffield S10 2RZ

United Kingdom

Email: t.johnson@sheffield.ac.uk

Tel: +44 (0) 7809 157953

Running Headline: Biomarkers of EPS in peritoneal effluent proteome

Word Count: 3978

Abstract:

Encapsulating peritoneal sclerosis (EPS) is a potentially devastating complication of peritoneal dialysis (PD). Diagnosis is often delayed due to the lack of effective and accurate diagnostic tools. We therefore examined peritoneal effluent for potential biomarkers that could predict or confirm the diagnosis of EPS and would be valuable in stratifying at-risk patients, and driving appropriate interventions. Using prospectively collected samples from the Global Fluid Study and a cohort of Greek PD patients, we utilized 2D SDS-PAGE/MS and iTRAQ to identify changes in the peritoneal effluent proteome from patients diagnosed with EPS and controls matched for treatment exposure. We employed a combinatorial peptide ligand library to compress the dynamic range of protein concentrations, to aid identification of low-abundance proteins. In patients with stable membrane function, fibrinogen γ -chain and heparan sulphate proteoglycan core protein progressively increased over time on PD. In patients who developed EPS, collagen- α 1(I), γ -actin and Complement factors B and I were elevated up to five years prior to diagnosis. Orosomucoid-1 and α 2-HS-glycoprotein chain-B were elevated about one year before diagnosis, while apolipoprotein A-IV and α 1-antitrypsin were decreased compared to controls. Dynamic range compression resulted in an increased number of proteins detected with improved resolution of protein spots, compared to the full fluid proteome. Intelectin-1, dermatopontin, gelsolin and retinol binding protein-4 were elevated in proteome-mined samples from patients with EPS compared to patients that had just commenced peritoneal dialysis. Thus, prospective analysis of peritoneal effluent uncovered proteins indicative of inflammatory and pro-fibrotic injury worthy of further evaluation as diagnostic/prognostic markers.

Keywords: peritoneal dialysis, encapsulating peritoneal sclerosis, biomarkers, proteomics

Introduction:

Encapsulating peritoneal sclerosis (EPS) is a rare complication of peritoneal dialysis (PD) resulting in significant morbidity and mortality⁽¹⁾. Overall reported life-time risk ranges from 0.54%⁽²⁾ to 3.3%⁽³⁾. Incidence increases with the duration of PD treatment⁽⁴⁻⁶⁾, ranging from 0.7%⁽⁴⁾ to 8.1%⁽⁵⁾ at 5 years and from 2.1%⁽⁴⁾ to 19.4%⁽⁶⁾ at 8 years. The development of EPS has been associated with numerous factors including glucose load, rapid solute transport status and intraperitoneal inflammation, requirement for icodextrin use, ultrafiltration failure associated with reduced free water transport, modality change, young age and genetic predisposition⁽⁷⁻¹⁴⁾.

The pathogenesis of EPS remains poorly defined but multiple “hits” appear to be required in patients predisposed to peritoneal injury by uremia and dialysis solution exposure.⁽¹⁵⁾ Although episodic infection, epithelial-to-mesenchymal transition (EMT)⁽¹⁶⁾ and the involvement of uncontrolled inflammatory cascades (TGF-beta, VEGF etc.)⁽¹⁷⁻²⁰⁾ may be contributory factors, to date no single definitive pathway has been identified.

Clinical signs of EPS include persistent or recurrent bowel dysfunction and nutritional impairment⁽¹⁾. Diagnosis is confirmed at laparotomy or on PET/CT imaging⁽²¹⁾, but the rarity of the disorder, variable presentation and lack of screening tools frequently lead to delayed diagnosis. Peritoneal dialysis effluent (PDE) biomarkers that could predict the onset or confirm the diagnosis of EPS would allow the development of prognostic tools and, potentially, the identification of future therapeutic targets. Proteomics technologies provide us with powerful tools for an in-depth exploration of the PDE proteome, yet relevant studies have been few and to date preliminary⁽²²⁻³⁸⁾.

In the present study, we have used an optimised proteomics approach to detect prospective changes in the PDE proteome of clinically well-described patients from the Global Fluid Study (GFS) cohort who subsequently developed EPS. Controls were patients from the same cohort with stable membrane function who did not subsequently develop EPS. EPS and stable patients were matched for time on treatment or time to developing EPS/stopping PD. The aim of this study was to identify

1
2 proteins in the drained PD effluent whose measurement might predict the onset of EPS. Further
3
4 analysis, using a cohort of Greek PD patients, utilized methods to allow detection of lower abundance
5
6 proteins by using a combinatorial peptide ligand library (CPLL). Based on these experiments, our data
7
8 identifies proteins whose expression changes in EPS patients and in some cases are expressed in
9
10 PDE significantly in advance of clinical diagnosis. These data support growing evidence that EPS is
11
12 preceded by inflammatory and fibrotic peritoneal injury and would seem worthy of further exploration
13
14 as candidate markers of EPS diagnosis and monitoring.
15
16
17
18
19
20
21
22
23
24
25
26
27
28
29
30
31
32
33
34
35
36
37
38
39
40
41
42
43
44
45
46
47
48
49
50
51
52
53
54
55
56
57
58
59
60

Results:

Determination of protein changes with time on PD in patients with stable peritoneal membrane function

To ascertain the time-course of changes in the levels of proteins in PDE, samples from 5 patients with at least 10 sequentially collected effluent samples spanning a period of >4 years on PD, were analysed by 2D PAGE. Over 800 protein spots were consistently detectable in all samples when analysed by PDQuest. The majority of these proteins were relatively constant in expression providing confidence of the validity and fidelity of the methodology selected (Figure 1). PDQuest identified approximately 25 spots that either increased (x2) or were reduced (x2) in intensity in a progressive manner with dialysis duration. Of these, however, only 2 spots were consistently changed in greater than 4 out of the 5 patient samples evaluated. Mass spectrometry identified these proteins as fibrinogen γ -chain (Figure 2a) and Heparan-Sulphate Proteoglycan (HSPG) (Figure 2b). Based on spot intensities, fibrinogen γ -chain began to be elevated after approximately 30% of total dialysis duration before plateauing while HSPG levels showed a progressive increase over the entire duration of PD treatment.

Determination of protein changes in patients that developed EPS

A. 2D SDS PAGE MS proteomics

To determine which proteins were changing in patients who were ultimately diagnosed with EPS, 6 UK patients from the GFS, who had EPS diagnosis confirmed by CT scan, and who had ≥ 4 sequential samples prior to this diagnosis were selected. Each of these patients was matched to a patient from the same centre according to the following criteria: equal exposure to PD treatment, comparable sampling points from the time of initiation of PD, stable membrane function and lack of any evidence indicative of EPS (see Supplemental Table 1 for time point matching details). The Dodeca gel system that was used for the study runs a maximum of 12 gels, so 6 EPS gels and 6

1
2
3
4
5
6
7
8
9
10
11
12
13
14
15
16
17
18
19
20
21
22
23
24
25
26
27
28
29
30
31
32
33
34
35
36
37
38
39
40
41
42
43
44
45
46
47
48
49
50
51
52
53
54
55
56
57
58
59
60

matched control sample gels was the maximum comparison that could be performed in a single experiment. Twenty four spots were identified in all the EPS patients as being differentially altered over time compared to the matched patients control samples. Of these, 2 spots were identified as being altered consistently in all of the 6 EPS patients in comparison to the control patients. Collagen- α 1(I) became elevated in EPS patients (Figure 3a) typically after 30% of total dialysis duration, while γ -actin (Figure 3b) was frequently elevated very early (124-1043 days) and remained elevated throughout the entire duration of PD (maximum duration was 2868 days) until EPS was diagnosed clinically. In 5 out of the 6 EPS patients, changes in spots subsequently identified as complement factors B and factor I were seen (Figure 4). The complement factor B spot was either not present or barely detectable in matched patients with stable membrane function, but was elevated (in some patients up to 6 years before EPS was diagnosed) and remained elevated (above matched control levels) in those patients who were subsequently diagnosed with EPS. The Complement factor I spot was present in both patient groups and decreased slightly with duration of PD. It was, however, at consistently higher density at each time point in those who subsequently were diagnosed with EPS. α 1-antitrypsin and apolipoprotein A-IV spots appeared at noticeably lower intensity in 3 out of 6 EPS patients.

B. Isobariq tagging for relative and absolute quantification (iTRAQ) proteomics.

2D SDS-PAGE is a labour-intensive approach, with analysis limited by the accuracy of spot mapping software that subsequently needs a high degree of manual mapping and is subject to data losses. To address these issues we optimised a mass spectrometry based iTRAQ protocol for use with PDE samples and repeated the comparisons in one EPS and matched control sample pair. An 8 iTRAQ approach was used allowing comparison of 4 time points from each patient. A limitation of iTRAQ is the low rate of protein detection, however 72 proteins had sufficient sequence recognition to allow for robust protein identification (Table 1). Of these, by performing ratio analysis of the isobariq tag from each patient at each time point it was possible to identify 4 consistent trends (Figure 5).

Orosomucoid-1 and α -2-HS-glycoprotein chain B were both elevated in the EPS patient approximately 12 months prior to diagnosis, while Apolipoprotein A-IV was always lower in EPS. There was also a late drop in serotransferrin levels at EPS onset.

Protein mining.

From both SDS-PAGE and iTRAQ it was evident that >95% of the total protein load detected was highly abundant serum proteins such as albumin and IgG (Figure 6A). This meant that <5% of the proteins being analysed were ones of potential interest. To address this, a protein-mining approach was used employing the Bio-Rad[®] ProteoMiner[™] enriching system to reduce the dynamic range of abundant protein concentrations, while maintaining the relative levels of less abundant proteins. In comparison to the full fluid proteome where approximately 800 spots were identified (many of which were related) (Figure 6A), post ProteoMiner[™] analysis the same protein concentration yielded >2000 discrete protein spots that were all well resolved (Figure 6B).

Determination of lower abundance proteins changing in patients that developed EPS using 2D SDS-PAGE/MS proteomics on samples subjected to ProteoMiner.

Protein mining required a starting protein mass of approximately 15mg, to produce 60 μ g of protein for proteomic analysis. In the GFS cohort, sufficient individual patient PDE was not available for this type of analysis. However, as part of a collaborative study with the University of Patras, Greece, we were able to obtain significant PDE volumes from 3 patients with suspected EPS. These samples were compared to 3 prevalent patients with stable membrane function who had been on PD for >5 years and with 3 incident patients from the same centre. All 9 samples were subjected to ProteoMiner[™] analysis, fractionated by 2D-SDS PAGE and compared using PDQuest[™]. From this analysis, three spots were detected that were elevated only in the PDE of patients with EPS. Intelectin-1 (Figure 7a) was barely detectable in patients just starting PD or in patients who had been on PD for >5 years. However, in patients with suspected EPS a strong protein spot was visible.

1
2 Likewise, dermatopontin (Figure 7b) was also strongly expressed in EPS patients, but was only mildly
3 elevated in 1 of the 3 prevalent patients and not at all in patients starting PD. Retinol binding protein-4
4 (RBP-4) was also identified as increasing in EPS patients (not shown). There were numerous
5 additional spots seen but we were subsequently unable to identify them in our MS analysis.
6
7
8
9

10 11 12 **Patient pooling to facilitate protein mining and ITRAQ on the GFS cohort**

13
14
15 To combine the benefit of protein-mining, the sequential sampling of patients in the GFS, the
16 power of the iTRAQ approach and provide sufficient protein for meaningful analysis, we combined
17 GFS effluent samples from several patients into 4 groups based on time on dialysis for both stable PD
18 patients and for those developing EPS. Samples were pooled in to Group 1; within 6 months of EPS
19 or stopping dialysis, Group 2; 6-12 months prior to stopping dialysis, Group 3; 12-24 months prior to
20 stopping dialysis and Group 4; >24 months before cessation of dialysis. Each pool of fluid (~18mg of
21 protein, see supplemental table 2 for pool composition detail) was protein-mined using proteominer,
22 iTRAQ-labelled and analysed by MS as previously described (Figure 8).
23
24
25
26
27
28
29
30
31

32
33 Analysis identified >2,000 detectable proteins and sequence recognition allowed robust
34 identification of 136 of these proteins. Hierarchical cluster analysis showed a clear demarcation of
35 proteins found between those who develop EPS and the control-matched patient samples (Figure 9a).
36 Heat map analysis (Figure 9b) demonstrated higher levels of many of these proteins in the EPS
37 effluent samples across all time points analysed. Subsequent analysis of the ratios of relative
38 changes in individual proteins between EPS and non-EPS patients with time was disappointing, in that
39 consistent progressive changes with time for individual proteins were limited compared to numerous
40 ratio shifts at individual time points. Nevertheless, the data confirmed the previously observed
41 increases in intelectin-1 expression and a small reduction in Apolipoprotein with both A-II & A-chains
42 being reduced in samples from patients subsequently developing EPS. Interestingly, despite
43 numerous changes being observed at each time point only two additional proteins appeared to change
44 progressively. Multiple Haemoglobin subunits were dramatically increased within the last 12 months in
45
46
47
48
49
50
51
52
53
54
55
56
57
58
59
60

1
2 EPS patients despite no macroscopic evidence of blood in the PDE samples, whilst Gelsolin showed a
3
4 progressive accumulation with time (Figure 10).
5
6
7

8 **Discussion:**

9
10 The combination of uraemic milieu and chronic exposure to PD solutions induce the
11 development of structural changes in the peritoneum⁽³⁹⁻⁴⁰⁾. There is significant interest as to whether
12 these histological changes can be correlated with or predicted by changes in effluent proteins
13 (irrespective of source) and whether the levels of these proteins are altered with duration of PD. Such
14 protein changes, if consistent, might provide easily detectable effluent biomarkers of distinct peritoneal
15 pathology or have routine prognostic value. In the present study we chose to screen for effluent
16 proteins in defined groups of PD patients using a broad-based proteomics approach. We used
17 prospectively collected PDE samples from the uniquely characterized patients in the GFS cohort to
18 examine if specific proteins were identifiable and ask if any of these were specifically changed in
19 patients who subsequently developed EPS. The 16 proteins identified across all proteomics
20 approaches, (which employed up to 10 patients that developed EPS, matched with 18 with stable
21 function) are summarized in table 2. Given that the function of some of these proteins is already
22 known, we can hypothesise as to their potential role in EPS.
23
24
25
26
27
28
29
30
31
32
33
34
35
36
37
38

39 Fibrin deposition is a feature of peritoneal fibrosis and EPS pathology⁽¹⁵⁾. Fibrin is derived from
40 fibrinogen and both are involved in inflammatory processes. In PDE fibrinogen γ -chain increases
41 during peritonitis and declines after successful treatment⁽²⁸⁾. Our results indicate that the amount of
42 fibrinogen γ -chain in PDE begins to increase after 6-18 months on PD and plateaus thereafter. As
43 major histopathological changes in the dialysed peritoneum begin to manifest fully after ~2 years on
44 PD⁽³⁹⁾, the pattern of fibrinogen γ -chain elevation might reflect the evolution of processes that
45 contribute to the establishment of peritoneal fibrosis. Fibrinogen γ -chain may thus become elevated
46 as fibrogenesis is initiated and plateau when fibrosis becomes established. Peritoneal fibrosis is also
47 characterised by increased turnover of extracellular matrix (ECM). This process might be reflected by
48
49
50
51
52
53
54
55
56
57
58
59
60

1
2 the progressive increases of HSPGs⁽⁴¹⁾ in PDE, as they are key components of basement
3
4 membranes.

5
6 Using 2D SDS-PAGE/MS, we observed increases in the concentrations of collagen- α 1(I) and
7
8 γ -actin in the PDE of 6 patients subsequently diagnosed with EPS. These changes were not seen in
9
10 the matched control patients. Elevation of collagen- α 1(I) may reflect increased ECM turnover and the
11
12 deposition of type-I collagen in the peritoneal tissues⁽⁴²⁾. Expression of collagen- α 1(I) mRNA is up-
13
14 regulated in EPS patient peritoneum, while its accumulation in the sub-mesothelial compact zone and
15
16 EPS-derived tissue has been demonstrated by immunostaining⁽⁴³⁻⁴⁴⁾. Remodelling of γ -actin
17
18 cytoskeleton is a feature of EMT⁽⁴⁵⁾. Early elevation of γ -actin in PDE might be the result of its release
19
20 from damaged peritoneal tissues⁽⁴⁶⁾. Interestingly, the changes in γ -actin are consistent with the
21
22 observed increases seen in gelsolin in the pooled EPS cohort samples. Gelsolin is an actin-binding
23
24 protein that is a key regulator of actin filament assembly and disassembly and one of the most potent
25
26 members of the actin-severing gelsolin/villin superfamily. Its elevation might help to explain the
27
28 increased γ -actin levels observed in PDE.
29
30
31

32 In contrast, α 1-antitrypsin and apolipoprotein A-IV were both at noticeably lower levels in patients
33
34 diagnosed with EPS. α 1-antitrypsin (1-PI) is an inhibitor of ECM proteases including plasmin and
35
36 suppresses the inflammatory response in PDE by inhibiting PAF biosynthesis. Blocking of 1-PI by
37
38 oxidants during inflammatory process allows for increased production of PAF and unrestrained
39
40 synthesis of inflammatory mediators⁽⁴⁷⁾. Apolipoprotein A-IV has anti-inflammatory⁽⁴⁸⁾ properties.
41
42 Therefore, lower levels of 1-PI and apo A-IV may indicate an active inflammatory process which might
43
44 contribute to EPS development⁽⁴⁹⁾. The latter is further supported by the observed increases in
45
46 Complement factor expression⁽⁴³⁾. Complement Factor I and factor B were consistently detected prior
47
48 to (years before) and remained elevated in all patients who subsequently developed EPS. Upon
49
50 activation of the alternative pathway, Factor B is cleaved by complement factor D yielding the catalytic
51
52 subunit Bb. The active subunit Bb associates with C3b to form the alternative pathway C3-
53
54 convertase, driving subsequent complement activation and inflammation. Factor I (also known as
55
56
57
58
59
60

1
2 C3b/C4b inactivator) is a key regulator of downstream complement activity and its elevated levels are
3
4 a further indicator of ongoing inflammatory activation in EPS patients.
5

6 Using iTRAQ analysis we demonstrated alterations in the effluent concentrations of acute
7
8 phase proteins (APP). Orosomucoid-1 and a2-HS-glycoprotein chain B were both elevated in EPS
9
10 patients >12 months prior to diagnosis whilst Apolipoprotein A-IV was always low in EPS patients.
11
12 Orosomucoid-1 is a major APP. Its concentration increases several-fold in response to inflammation,
13
14 infection or systemic tissue injury⁽⁵⁰⁻⁵¹⁾. In PD patients, its dialysate levels increase during
15
16 peritonitis⁽⁵²⁾. Alpha2-Heremans–Schmid glycoprotein (AHSG), or fetuin-A, has been suggested as a
17
18 negative APP of inflammation⁽⁵³⁾ but as a positive APP of injury⁽⁵⁴⁾ and as an antagonist of TGF- β ⁽⁵⁵⁾.
19
20 The observed increase of these two molecules in the PDE, months before the onset of overt EPS,
21
22 might underline a potential prognostic value. Serotransferrin is the major iron transporter and is down-
23
24 regulated in inflammatory conditions⁽⁵⁶⁻⁵⁷⁾. The observed late drop of serotransferrin levels might thus
25
26 also reflect an increased inflammatory event that is critical in the establishment of full-blown EPS
27
28 symptoms and pathology.
29
30
31

32 Complex biological samples are characterised by a high dynamic range of protein
33
34 concentrations⁽⁵⁸⁾, posing a major challenge in proteomic analyses⁽⁵⁹⁾ as less abundant components
35
36 are far more likely to be useful as biomarkers. Combinatorial peptide ligand libraries (CPLL) can
37
38 compress the dynamic range by altering the proportion of abundant versus non-abundant proteins⁽⁶⁰⁾.
39
40 This approach was preferred over depletion protocols, where proteins of potential interest may also be
41
42 removed non-specifically by sticking to depleted proteins such as albumin. Recovery of <1% of
43
44 treated protein, increased the number and improved resolution of spots, indicating that proteome-
45
46 mining was successful and increasing the sensitivity of 2D SDS-PAGE. Variability in spot intensities
47
48 indicates that quantitative information was not lost during the mining process. Comparisons between
49
50 gels from CPLL-mined samples identified that intelectin-1, dermatopontin and retinol binding protein-4
51
52 appeared to be elevated in PD patients diagnosed with EPS compared to matched controls or those
53
54 just starting on PD. Intelectin-1 is an adipocytokine involved in intestinal host defences⁽⁶¹⁾.
55
56
57
58
59
60

1
2 Dermatopontin is an ECM protein that regulates the function of TGF- β by interacting with the
3 proteoglycan decorin⁽⁶²⁾. Its presence in PDE might thus indicate increased turnover and accumulation
4 of ECM in the peritoneum⁽⁶³⁾, being consistent with changes in Collagen 1 and HSPG.
5
6

7
8 Overall the primary aim of this study was to identify early biomarkers for subsequent validation
9 that would predict later risk of EPS. This has been successful in identifying changes in Collagen
10 α 1(1), γ -Actin, complement I & B as well as anti-trypsin up to 3 to 5 years before EPS onset, with
11 Gelsolin, Apo AII, Apo-AIV & haemoglobin β changing at least 2 years before onset, although caution
12 should be exercised with these time frames due to the large variation in time on PD between the
13 matched populations. The study also identified late markers such as serotransferrin, Orosomucoid-1,
14 Alpha-2-HS-glycoprotein chain B and intellectin-1 which may have diagnostic value when combined
15 with symptoms. One could further hypothesise that this data supports the multiple hit theory of EPS
16 with early, mid and late protein changes in that there may be a time-point where a “second hit” drives
17 the process into the EPS pathway post an initial hit priming the system (eg. reflected by changes in
18 Collagen I and Actin). From that time on, the inflammatory and other processes that lead to the
19 development of EPS may need 6-12 months to fully develop into a recognisable clinical syndrome. Its
20 thus likely, and reflected here, that biomarkers would fall into the same 2 categories.
21
22
23
24
25
26
27
28
29
30
31
32
33
34
35
36

37 While of interest, the robustness of our findings is significantly limited by the low number of
38 patients available for suitable stratification and the limited numbers that can be compared in these
39 proteomic approaches. The GFS is one of the world’s largest PD cohort studies, yet has limited EPS-
40 to-control matching options, resulting in some differences in descriptive data to remain apparent. As
41 with all previous studies in this area, it is possible that differences in measured and unmeasured
42 confounders could be biasing the results. Further, the selected proteomics approach was not able to
43 determine the source of the proteins identified in this analysis and a possible spill-over effect from
44 plasma cannot be excluded which needs to be addressed in ongoing investigations.
45
46
47
48
49
50
51
52
53

54 Previous studies have suggested that a number of proteins, primarily inflammatory biomarkers
55 (IL-6, TNF- α , MCP-1, CCL-15, PAI-1), were slightly increased in the PDE of patients who
56
57
58
59
60

1
2 subsequently developed EPS^(10,49,64-65), but were not identified by our proteomics approach. Previous
3
4 studies used a targeted ELISA based approach, which has high sensitivity and subsequently
5
6 resolution. Proteins identifiable with ELISA may subsequently fall below the detection limit of the
7
8 proteomics approaches described, especially where protein-mining was not undertaken. Further, the
9
10 proteomic technique may be unable to see the protein in the matrix used. Protein spots may not
11
12 resolve, while high-matching criteria (4 peptides minimum) may have disadvantaged detection of
13
14 smaller proteins. Alternatively, proteins may have not flown in the MS or not label with an isobariq tag.
15
16 Finally, the small number of patients, the frequency of the change (i.e. spot changes in >75% of
17
18 comparisons) or its magnitude could impede identification. Multiplexing approaches are more
19
20 sensitive and quantitative, and could have been used here. However the investigator must select the
21
22 list of proteins to measure, which precludes discovery of new protein involvement. Further these
23
24 approaches demand high sample number and would not add power to the results described due to the
25
26 very small number of EPS samples in the GFS cohort.
27
28

29
30 In contrast, the strengths of this study lie in its prospective nature, its unbiased nature and
31
32 multiple proteomic approaches. Prospective analysis has resulted in identifying changes that occur
33
34 consistently over time (and prior to disease onset in many cases), are robust across multiple
35
36 comparisons and differentiate between EPS and control patients. The discovery-based approach, has
37
38 allowed the analysis to be undertaken without prejudice for already known proteins and pathways,
39
40 thus reducing protein selection bias and potentially allowing the discovery of novel markers of
41
42 peritoneal fibrosis and EPS.
43
44

45
46 Collectively, the study results demonstrate that progressive and consistent changes in th e
47
48 PDE proteome can be identified in PDE samples derived from patients who subsequently developed
49
50 EPS. The majority of the proteins identified in EPS patients are consistent with their potential
51
52 involvement in inflammation, the acute phase response, fibrogenesis and ECM turnover (Table 2).
53
54 This novel data supports the need for further investigation using classical measurement techniques.
55
56 Future studies should focus on the quantitative investigation of the proteins identified here and in other
57
58
59
60

1
2 studies, in large, multicenter, well-stratified PD patient cohorts to provide robust validation of the use of
3
4 these proteins as potential predictive and diagnostic tools, either individually or as part of a fingerprint.
5
6
7
8
9
10
11
12
13
14
15
16
17
18
19
20
21
22
23
24
25
26
27
28
29
30
31
32
33
34
35
36
37
38
39
40
41
42
43
44
45
46
47
48
49
50
51
52
53
54
55
56
57
58
59
60

For Peer Review Only

Methods

(Comprehensive description of methods used provided in supplementary material)

Patient Cohorts, Matching and Sample Collection

Patients were drawn from the Global Fluid Study (GFS)⁽⁶⁶⁾ and a smaller single-centre cohort from the University of Patras, Greece. The GFS cohort provided prospectively collected effluent samples from patients with confirmed diagnosis of EPS and control patients primarily matched for treatment exposure (time on PD or time to EPS/stopping PD) and centre (Supplemental tables 1&2). The Greek cohort provided single, large volume samples from nine selected patients, needed for the optimization of Proteominer™ for use with PDE. The study was conducted adhering to the tenets of the Declaration of Helsinki and informed consent was obtained from all patients. Ethical approval was obtained from the Multi-Centre Research Ethics Committee for Wales covering the UK, whilst local country ethics were obtained for other contributing countries. The clinical and demographic characteristics of participating patients from both cohorts are summarised in Table 3a and 3b, respectively.

Sample preparation

Total protein was precipitated using acetone/100%TCA, and resolubilised in buffer. 60µg of protein were loaded on pH 4-7 immobilised pH gradient (IPG) strips (Bio-Rad Laboratories Ltd., Hercules, CA, U.S.A.).

Two-dimensional electrophoresis

Isoelectric focusing (IEF) was performed in a PROTEAN IEF system using a four-step protocol and subsequently, proteins were fractionated on a 20 x 23cm 10% polyacrylamide gel using a PROTEAN Plus Dodeca Cell system (Bio-Rad Laboratories Ltd., Hercules, CA, U.S.A.).

Gel fixing and silver staining

1
2 Gels were fixed using 40% methanol and 10% acetic acid and silver-stained as described
3
4 elsewhere.⁽⁶⁷⁾
5

6 **Gel Imaging**

7
8 Gels were scanned on a Genetools densitometer (transmission) and PDQuest v8.0 (Bio-Rad
9
10 Laboratories Ltd., Hercules, CA, U.S.A.) was used for image analysis.
11
12

13 **Proteome mining**

14
15
16 Proteominer™ (Biorad, Laboratories Ltd., Hercules, CA, U.S.A.) was employed, using a 20µl of
17
18 beads to 10 mg of protein ratio and a two-step elution protocol.⁽⁶⁸⁾
19
20

21 **iTRAQ labeling**

22
23 Sample labeling with iTRAQ reagents was performed as described elsewhere.⁽⁶⁹⁾ Briefly,
24
25 100 µg of protein from each sample was reduced, alkylated and digested with trypsin, prior to labeling
26
27 (iTRAQ® Reagents – 8plex, AB Sciex™, Framingham, MA, USA).
28
29
30

31 **Strong Cation Exchange (SCX) Fractionation of Peptides**

32
33 Briefly, SCX was carried out using a PolySULFOETHYL™ A Column (PolyLC, Columbia, MD)
34
35 5µm particle size of 200mm length × 2.1mm id, 200 Å pore size, on a BioLC HPLC unit (Dionex,
36
37 Surrey, UK). The chromatogram was monitored through a UV Detector (Dionex/LC Packings,
38
39 Amsterdam, the Netherlands), at 214 nm.
40
41
42

43 **Mass Spectrometry (MS)**

44
45 Mass spectrometry was performed using a Q-Star XL Hybrid ESI Quadrupole time-of-flight
46
47 tandem mass spectrometer, ESI-qQ-TOF-MS/MS (Applied Biosystems; MDS-Sciex) coupled to an
48
49 online capillary liquid chromatography system (U3000, Thermo, Hemel Hempstead, UK). Peptides
50
51 were separated on a PepMap C-18 RP capillary column (LC Packings).
52
53
54
55
56
57
58
59
60

MS Data Analysis

Peak list conversion was performed using the mascot.dll embedded script (V1.6) coupled with Analyst QS 1.1.1 (ABSCIEX, Framingham, MA, USA). Protein identification and relative quantification was carried out in Phenyx v2.6 (GeneBio S.A., Geneva, Switzerland), using a human protein database. False discovery rate (FDR) was calculated using a decoy database automatically created by reversing the sequences from the target database⁽⁷⁰⁾ and was found to be 1%. Figures show exemplar data and samples for iTRAQ were pooled and thus do not include standard errors. For Figure 7, multiple samples from 2D-gels run concurrently have been combined to provide a mean and therefore the standard errors were calculated..

Disclosures

SD, NT, ML and MW have all received research funding (unrestricted research grant) from Baxter Healthcare for this and related research. All other authors declare no conflict of interest.

Funding

This research was funded by an unrestricted educational grant from Baxter Healthcare with additional financial support from the Sheffield Kidney Research foundation.

Wales Kidney Research Unit receives central infrastructure support from Health and Social Care Research Wales (HCRW). The GLOBAL Fluid study received unrestricted educational funding from Baxter Healthcare, Renal Division.

Acknowledgements

Infrastructure support for the establishment of the GLOBAL fluid study was provided as unrestricted educational grants from Baxter Healthcare Renal Division and the International Society for Peritoneal

1
2 Dialysis. This study was officially endorsed by the ISPD (www.ispd.org) and by the British Renal
3 Society (BRS) (www.britishrenal.org). The authors would like to acknowledge the support of Anna-
4 Clare Smith, Kathryn Craig, Maureen Fallon and Charlotte James in the co-ordination of the GLOBAL
5 study and the following clinical staff in the centres in co-ordination of sample and clinical data
6 collection; Hilary Huxtable SRN., Renal Unit, Morriston Hospital, Swansea, UK; Gill Gilbert RGN BSc
7 (Hons), Ipswich Hospital NHS Trust; Catherine Jones RGN and Jane Hollis RGN BSc (Hons),
8 Cambridge University Hospitals NHS Foundation Trust; Jung-Ju Seo, RN, MS., Kyungpook National
9 University Hospital, Daegu, South Korea; Kei-Lim Shin, RN., Yeungnam University Hospital, Daegu,
10 South Korea; Sung Hee Chung, R.N., Ph.D., Hyonam Kidney Laboratory, Soon Chun Hyang
11 University, Seoul, South Korea; Joanne Leblanc-Chiasson, RN, Rachel Belliveau, RN, Régina
12 Arsenault, RN, research assistant, Dr Georges-L.-Dumont Hospital, Moncton, New-Brunswick,
13 Canada; Kathy Yetzer RN and Donna Hackman RN, Division of Nephrology and Immunology,
14 Department of Medicine, University of Alberta, Edmonton, Canada and the nursing team on the PD
15 Unit at the University Hospital of Wales, Cardiff.
16
17
18
19
20
21
22
23
24
25
26
27
28
29
30
31
32
33
34

35 The GLOBAL Fluid Study Investigators are:

36 Nicholas Topley[‡], John D Williams[‡], Kieron L Donovan[‡], James Chess[‡], Simon J. Davies[†], Mark
37 Lambie[†], Yong-Lim Kim[¶], Jun-Young Do[¶], Hi-Bahl Lee^{**}, Hyunjin Noh^{**}, Paul F. Williams^{|||}, Sara
38 Davison^{††}, Marc Dorval^{‡‡}, Angela Summers^{§§}, Andrew J Williams[§]
39
40
41
42
43
44

45 [‡]Institute of Nephrology, Cardiff University School of Medicine, Heath Park, Cardiff, UK

46 [†] Institute for Science and Technology in Medicine, Keele University, Stoke on Trent, UK

47 [¶]Division of Nephrology, Yeungnam University Hospital, Daegu, South Korea

48 ^{**}Hyonam Kidney Laboratory, Soon Chun Hyang University, Seoul, South Korea

49 ^{|||}Ipswich Hospital NHS Trust Ipswich Hospital, Heath Road, Ipswich, UK and Cambridge University
50 Hospitals NHS Foundation Trust, Hills Road, Cambridge, UK
51
52
53
54
55
56
57
58
59
60

1
2 §Renal Unit, Morriston Hospital, Abertawe and Bro Morgannwg local Health Board, Swansea, UK
3

4 ¶Division of Nephrology and Clinical Research Center for ESRD in Korea, Kyungpook National
5
6 University Hospital, Daegu, South Korea
7

8 †† Division of Nephrology and Immunology, Department of Medicine, University of Alberta, Edmonton,
9
10 Canada
11

12 ‡‡ Division of Nephrology, Dr. Georges-L.-Dumont University Hospital Centre, •Moncton, New
13
14 Brunswick, Canada
15

16
17 §§Renal Research Laboratories, Manchester Royal Infirmary, Oxford Road, Manchester, UK
18
19
20
21
22
23
24
25
26
27
28
29
30
31
32
33
34
35
36
37
38
39
40
41
42
43
44
45
46
47
48
49
50
51
52
53
54
55
56
57
58
59
60

References:

1. Kawaguchi Y, Kawanishi H, Mujais S et al. Encapsulating peritoneal sclerosis: definition, etiology, diagnosis, and treatment. International Society for Peritoneal Dialysis Ad Hoc Committee on Ultrafiltration Management in Peritoneal Dialysis. *Perit Dial Int*. 2000;20 (Suppl 4): S43-65.
2. Afthentopoulos IE, Passadakis P, Oreopoulos DG et al. Sclerosing peritonitis in continuous ambulatory peritoneal dialysis patients: one center's experience and review of the literature *Adv Ren Replace Ther*. 1998 Jul;5(3):157-67.
Erratum in
 - *Adv Ren Replace Ther* 1998 Oct;5(4):353.
3. Summers AM, Clancy MJ, Syed F et al. Single-center experience of encapsulating peritoneal sclerosis in patients on peritoneal dialysis for end-stage renal failure. *Kidney Int*. 2005 Nov;68(5):2381-8.
4. Kawanishi H, Kawaguchi Y, Fukui H et al. Encapsulating peritoneal sclerosis in Japan: a prospective, controlled, multicenter study. *Am J Kidney Dis*. 2004 Oct;44(4):729-37.
5. Brown MC, Simpson K, Kerssens JJ, et al. Encapsulating peritoneal sclerosis in the new millennium: a national cohort study. *Clin J Am Soc Nephrol*. 2009 Jul;4(7):1222-9. doi: 10.2215/CJN.01260209. Epub 2009 Jun 18.
6. Rigby RJ, Hawley CM. Sclerosing peritonitis: the experience in Australia. *Nephrol Dial Transplant*. 1998 Jan;13(1):154-9.
7. Johnson DW, Cho Y, Livingston BE, et al. Encapsulating peritoneal sclerosis: incidence, predictors, and outcomes. *Kidney Int*. 2010 May;77(10):904-12. doi: 10.1038/ki.2010.16. Epub 2010 Mar 10.
8. Korte MR, Sampimon DE, Lingsma HF, et al. Risk factors associated with encapsulating peritoneal sclerosis in Dutch EPS study. *Perit Dial Int*. 2011 May-Jun;31(3):269-78. doi: 10.3747/pdi.2010.00167. Epub 2011 Mar 31.
9. Morelle J, Sow A, Hautem N et al. Interstitial Fibrosis Restricts Osmotic Water Transport in Encapsulating Peritoneal Sclerosis. *J Am Soc Nephrol*. 2015 Oct;26(10):2521-33. doi: 10.1681/ASN.2014090939. Epub 2015 Jan 30.
10. Sampimon DE, Korte MR, Barreto DL, et al. Early diagnostic markers for encapsulating peritoneal sclerosis: a case-control study. *Perit Dial Int*. 2010 Mar-Apr;30(2):163-9. doi: 10.3747/pdi.2009.00022. Epub 2010 Feb 1.
11. Lambie ML, John B, Mushahar L, et al. The peritoneal osmotic conductance is low well before the diagnosis of encapsulating peritoneal sclerosis is made. *Kidney Int*. 2010 Sep;78(6):611-8. doi: 10.1038/ki.2010.186. Epub 2010 Jun 23.
12. Balasubramaniam G, Brown EA, Davenport A, et al. The Pan-Thames EPS study: treatment and

- 1
2 outcomes of encapsulating peritoneal sclerosis. *Nephrol Dial Transplant*. 2009 Oct;24(10):3209-15.
3 doi: 10.1093/ndt/gfp008. Epub 2009 Feb 11.
4
- 5 13. Yamamoto R, Otsuka Y, Nakayama M, et al. Risk factors for encapsulating peritoneal sclerosis in
6 patients who have experienced peritoneal dialysis treatment. *Clin Exp Nephrol*. 2005 Jun;9(2):148-52.
7
- 8 14. Summers AM, Brenchley PE. An international encapsulating peritoneal sclerosis registry and DNA
9 bank: why we need one now. *Perit Dial Int*. 2006 Sep-Oct;26(5):559-63.
10
- 11 15. Honda K, Oda H. Pathology of encapsulating peritoneal sclerosis. *Perit Dial Int*. 2005 Apr;25 Suppl
12 4:S19-29.
13
- 14 16. Yañez-Mo M, Lara-Pezzi E, Selgas R, et al. Peritoneal dialysis and epithelial-to-mesenchymal
15 transition of mesothelial cells. *N Engl J Med*. 2003 Jan 30;348(5):403-13.
16
- 17 17. Margetts PJ, Bonniaud P, Liu L, et al. Transient overexpression of TGF- β 1 induces epithelial
18 mesenchymal transition in the rodent peritoneum. *J Am Soc Nephrol*. 2005 Feb;16(2):425-36. Epub
19 2004 Dec 8.
20
- 21 18. Patel P, Sekiguchi Y, Oh KH, et al. Smad3-dependent and -independent pathways are involved in
22 peritoneal membrane injury. *Kidney Int*. 2010 Feb;77(4):319-28. doi: 10.1038/ki.2009.436. Epub 2009
23 Dec 2.
24
- 25 19. Io H, Hamada C, Ro Y, et al. Morphologic changes of peritoneum and expression of VEGF in
26 encapsulated peritoneal sclerosis rat models. *Kidney Int*. 2004 May;65(5):1927-36.
27
- 28 20. Braun N, Reimold F, Biegger D, et al. Fibrogenic growth factors in encapsulating peritoneal
29 sclerosis. *Nephron Clin Pract*. 2009;113(2):c88-95. doi: 10.1159/000228540. Epub 2009 Jul 14.
30
- 31 21. Tarzi RM, Lim A, Moser S, et al. Assessing the validity of an abdominal CT scoring system in the
32 diagnosis of encapsulating peritoneal sclerosis. *Clin J Am Soc Nephrol*. 2008 Nov;3(6):1702-10. doi:
33 10.2215/CJN.01820408. Epub 2008 Jul 30.
34
- 35 22. Bruschi M, Candiano G, Santucci L, et al. Combinatorial Peptide Ligand Library and two
36 dimensional electrophoresis: new frontiers in the study of peritoneal dialysis effluent in pediatric
37 patients. *J Proteomics*. 2015 Feb 26;116:68-80. doi: 10.1016/j.jprot.2015.01.003. Epub 2015 Jan 10.
38
- 39 23. Oliveira E, Araújo JE, Gómez-Meire S, et al. Proteomics analysis of the peritoneal dialysate
40 effluent reveals the presence of calcium-regulation proteins and acute inflammatory response.
41 *Clin Proteomics*. 2014 Apr 17;11(1):17. doi: 10.1186/1559-0275-11-17. e-Collection 2014.
42
- 43 24. Wen Q, Zhang L, Mao HP, et al. Proteomic analysis in peritoneal dialysis patients with different
44 peritoneal transport characteristics. *Biochem Biophys Res Commun*. 2013 Aug 30;438(3):473-8. doi:
45 10.1016/j.bbrc.2013.07.116. Epub 2013 Aug 2.
46
- 47 25. Yang MH, Wang HY, Lu CY, et al. Proteomic profiling for peritoneal dialysate: differential protein
48 expression in diabetes mellitus. *Biomed Res Int*. 2013;2013:642964. doi: 10.1155/2013/642964. Epub
49 2013 May 28.
50
51
52
53
54
55
56
57
58
59
60

- 1
2
3 26. Wu HY, Liao AC, Huang CC, et al. Comparative proteomic analysis of peritoneal dialysate from
4 chronic glomerulonephritis patients. *Biomed Res Int*. 2013;2013:863860. doi: 10.1155/2013/863860.
5 Epub 2013 May 14.
- 6
7 27. Zhang L, Wen Q, Mao HP, et al. Developing a reproducible method for the high-resolution
8 separation of peritoneal dialysate proteins on 2-D gels. *Protein Expr Purif*. 2013 Jun;89(2):196-202.
9 doi: 10.1016/j.pep.2013.03.010. Epub 2013 Apr 2.
- 10
11 28. Tyan YC, Su SB, Ting SS, et al. A comparative proteomic analysis of peritoneal dialysate before
12 and after the occurrence of peritonitis episode by mass spectrometry. *Clin Chim Acta*. 2013
13 May;420:34-44. doi: 10.1016/j.cca.2012.10.010. Epub 2012 Oct 15.
- 14
15 29. Wang HY, Lin CY, Chien CC, et al. Impact of uremic environment on peritoneum: a proteomic
16 view. *J Proteomics*. 2012 Apr 3;75(7):2053-63. doi: 10.1016/j.jprot.2012.01.011. Epub 2012 Jan 16.
- 17
18 30. Pešić I, Dihazi GH, Müller GA, et al. Short-term increase of glucose concentration in PDS results
19 in extensive removal and high glycation level of vital proteins during continuous ambulatory peritoneal
20 dialysis. *Nephrol Dial Transplant*. 2011 Aug;26(8):2674-83. doi: 10.1093/ndt/gfq793. Epub 2011 Feb 1.
- 21
22 31. Cuccurullo M, Evangelista C, Vilasi A, et al. Proteomic analysis of peritoneal fluid of patients
23 treated by peritoneal dialysis: effect of glucose concentration. *Nephrol Dial Transplant*. 2011
24 Jun;26(6):1990-9. doi: 10.1093/ndt/gfq670. Epub 2010 Nov 15.
- 25
26 32. Lechner M, Kratochwill K, Lichtenauer A, et al. A proteomic view on the role of glucose in
27 peritoneal dialysis. *J Proteome Res*. 2010 May 7;9(5):2472-9. doi: 10.1021/pr9011574.
- 28
29 33. Wang HY, Tian YF, Chien CC, et al. Differential proteomic characterization between normal
30 peritoneal fluid and diabetic peritoneal dialysate. *Nephrol Dial Transplant*. 2010 Jun;25(6):1955-63.
31 doi: 10.1093/ndt/gfp696. Epub 2010 Jan 6.
- 32
33 34. Lin WT, Tsai CC, Chen CY, et al. Proteomic analysis of peritoneal dialysate fluid in patients with
34 dialysis-related peritonitis. *Ren Fail*. 2008;30(8):772-7. doi: 10.1080/08860220802248969.
- 35
36 35. Dihazi H, Müller CA, Mattes H, et al. Proteomic analysis to improve adequacy of hemo- and
37 peritoneal dialysis: Removal of small and high molecular weight proteins with high- and low-flux filters
38 or a peritoneal membrane. *Proteomics Clin Appl*. 2008 Jul;2(7-8):1167-82. doi:
39 10.1002/prca.200780143. Epub 2008 Jul 10.
- 40
41 36. Raaijmakers R, Pluk W, Schröder CH, et al. Proteomic profiling and identification in peritoneal fluid
42 of children treated by peritoneal dialysis. *Nephrol Dial Transplant*. 2008 Jul;23(7):2402-5. doi:
43 10.1093/ndt/gfn212. Epub 2008 Apr 19.
- 44
45 37. Sritippayawan S, Chiangjong W, Semangoen T, et al. Proteomic analysis of peritoneal dialysate
46 fluid in patients with different types of peritoneal membranes. *J Proteome Res*. 2007 Nov;6(11):4356-
47 62. Epub 2007 Oct 9.
- 48
49 38. Brewis IA, Topley N. Proteomics and peritoneal dialysis: early days but clear potential.
50 *Nephrol Dial Transplant*. 2010 Jun;25(6):1749-53. doi: 10.1093/ndt/gfq145. Epub 2010 Mar 26.
- 51
52 39. Williams JD, Craig KJ, Topley N, et al. Morphologic changes in the peritoneal membrane of
53 patients with renal disease. *J Am Soc Nephrol*. 2002 Feb;13(2):470-9.
- 54
55
56
57
58
59
60

- 1
2 40. Mateijsen MA, van der Wal AC, Hendriks PM, et al. Vascular and interstitial changes in the
3 peritoneum of CAPD patients with peritoneal sclerosis. *Perit Dial Int*. 1999 Nov-Dec;19(6):517-25.
4
5
6 41. Osada S, Hamada C, Shimaoka T, et al. Alterations in proteoglycan components and
7 histopathology of the peritoneum in uraemic and peritoneal dialysis (PD) patients. *Nephrol Dial*
8 *Transplant*. 2009 Nov;24(11):3504-12. doi: 10.1093/ndt/gfp268
9
10 42. Fielding CA, Jones GW, McLoughlin RM, et al. IL-6 Signaling Drives Fibrosis in Unresolved
11 Inflammation. *Immunity* 2014; 40; 40-50. (doi 10.1016/j.immuni.2013.10.022)
12
13 43. Reimold FR, Braun N, Zsengeller ZK, et al. Transcriptional patterns in peritoneal tissue of
14 encapsulating peritoneal sclerosis, a complication of chronic peritoneal dialysis. *PLoS One*.
15 2013;8(2):e56389. doi: 10.1371/journal.pone.0056389. Epub 2013 Feb 13.
16
17 44. Guo H, Leung JC, Lam MF, et al. Smad7 transgene attenuates peritoneal fibrosis in uremic rats
18 treated with peritoneal dialysis. *J Am Soc Nephrol*. 2007 Oct;18(10):2689-703. Epub 2007 Sep 12.
19
20 45. Haynes J, Srivastava J, Madson N, et al. Dynamic actin remodeling during epithelial-to-
21 mesenchymal transition depends on increased moesin expression. *Mol Biol Cell*. 2011
22 Dec;22(24):4750-64. doi: 10.1091/mbc.E11-02-0119. Epub 2011 Oct 26.
23
24 46. Mejean C, Roustan C, Benyamin Y. Anti-actin antibodies. Detection and quantitation of total and
25 skeletal muscle actin in human plasma using a competitive ELISA. *J Immunol Methods*. 1987 May
26 4;99(1):129-35.
27
28 47. Mariano F, Tetta C, Montrucchio G, et al. Role of alpha 1-proteinase inhibitor in restraining
29 peritoneal inflammation in CAPD patients. *Kidney Int*. 1992 Sep;42(3):735-42.
30
31 48. Recalde D, Ostos MA, Badell E, et al. Human apolipoprotein A-IV reduces secretion of
32 proinflammatory cytokines and atherosclerotic effects of a chronic infection mimicked by
33 lipopolysaccharide. *Arterioscler Thromb Vasc Biol*. 2004 Apr;24(4):756-61. Epub 2004 Jan 29.
34
35 49. Lambie M, J. Chess J, Summers A, et al. Peritoneal Inflammation Precedes Encapsulating
36 Peritoneal Sclerosis: Results from the GLOBAL Fluid Study. *Nephrol Dial Transplant*. 2016
37 Mar;31(3):480-6
38
39 50. Fournier T, Medjoubi-N N, Porquet D. Alpha-1-acid glycoprotein. *Biochim Biophys Acta*. 2000 Oct
40 18;1482(1-2):157-71.
41
42 51. Hochepped T, Berger FG, Baumann H, et al. Alpha(1)-acid glycoprotein: an acute phase protein
43 with inflammatory and immunomodulating properties. *Cytokine Growth Factor Rev*. 2003
44 Feb;14(1):25-34.
45
46 52. Bohenek WS, Johnson CA, Ateshkadi A, et al. Effect of peritonitis on plasma and dialysate alpha
47 1-acid glycoprotein concentrations in peritoneal dialysis patients. *Clin Pharm*. 1993 Aug;12(8):602-5.
48
49 53. Li W, Zhu S, Li J, et al. A hepatic protein, fetuin-A, occupies a protective role in lethal systemic
50 inflammation. *PLoS One* 2011 Feb 8;6(2):e16945. doi: 10.1371/journal.pone.0016945.
51
52
53
54
55
56
57
58
59
60

- 1
2
3 54. Tuttolomondo A, Di Raimondo D, Di Sciacca R, et al. Fetuin-A and CD40 L plasma levels in acute
4 ischemic stroke: differences in relation to TOAST subtype and correlation with clinical and laboratory
5 variables. *Atherosclerosis*. 2010 Jan;208(1):290-6. doi: 10.1016/j.atherosclerosis.2009.07.032. Epub
6 2009 Jul 23.
7
8
9 55. Demetriou M, Binkert C, Sukhu B, et al. Fetuin/alpha2-HS glycoprotein is a transforming growth
10 factor-beta type II receptor mimic and cytokine antagonist. *J Biol Chem*. 1996 May 31;271(22):12755-
11 61.
12
13 56. van Campenhout A, van Campenhout CM, Lagrou AR, et al. Transferrin modifications and lipid
14 peroxidation: implications in diabetes mellitus. *Free Radic Res*. 2003 Oct;37(10):1069-77.
15
16 57. Tombini M, Squitti R, Cacciapaglia F, et al. Inflammation and iron metabolism in adult patients with
17 epilepsy: Does a link exist? *Epilepsy Res*. 2013 Dec;107(3):244-52. doi:
18 10.1016/j.eplesyres.2013.09.010. Epub 2013 Sep 28.
19
20 58. Hortin GL, Sviridov D, Anderson NL. High-abundance polypeptides of the human plasma proteome
21 comprising the top 4 logs of polypeptide abundance. *Clin Chem*. 2008 Oct;54(10):1608-16. doi:
22 10.1373/clinchem.2008.108175. Epub 2008 Aug 7.
23
24 59. Hortin GL, Sviridov D. The dynamic range problem in the analysis of the plasma proteome.
25 *J Proteomics*. 2010 Jan 3;73(3):629-36. doi: 10.1016/j.jprot.2009.07.001. Epub 2009 Jul 17.
26
27 60. Hartwig S, Lehr S. Combination of highly efficient hexapeptide ligand library-based sample
28 preparation with 2D DIGE for the analysis of the hidden human serum/plasma proteome.
29 *Methods Mol Biol*. 2012;854:169-80. doi: 10.1007/978-1-61779-573-2_12.
30
31 61. Schaffler A, Neumeier M, Herfarth H, et al. Genomic structure of human omentin, a new
32 adipocytokine expressed in omental adipose tissue. *Biochim Biophys Acta*. 2005 Dec 30;1732(1-3):96-
33 102. Epub 2005 Dec 19.
34
35 62. Okamoto O, Fujiwara S, Abe M, et al. Dermatopontin interacts with transforming growth factor beta
36 and enhances its biological activity. *Biochem J*. 1999 Feb 1;337 (Pt 3):537-41.
37
38 63. Gambichler T, Skrygan M, Czempel V, et al. Differential expression of connective tissue growth
39 factor and extracellular matrix proteins in lichen sclerosis. *J Eur Acad Dermatol Venereol*. 2012
40 Feb;26(2):207-12. doi: 10.1111/j.1468-3083.2011.04037.x. Epub 2011 Mar 24.
41
42 64. Goodlad C, Tam FW, Ahmad S, et al. Dialysate cytokine levels do not predict encapsulating
43 peritoneal sclerosis. *Perit Dial Int*. 2014 Sep-Oct;34(6):594-604. doi: 10.3747/pdi.2012.00305.
44
45 65. Lopes Barreto D, Struijk DG, Krediet RT. Peritoneal effluent MMP-2 and PAI-1 in encapsulating
46 peritoneal sclerosis. *Am J Kidney Dis*. 2015 May;65(5):748-53. doi: 10.1053/j.ajkd.2014.10.022.
47
48 66. Lambie M, Chess J, Donovan KL, et al. Independent effects of systemic and local peritoneal
49 inflammation on membrane function and survival of PD patients: results from the GLOBAL Fluid Study.
50 *J Am Soc Nephrol* 2013; 24: 2071–2080 (doi: 10.1681/ASN.2013030314)
51
52
53
54
55
56
57
58
59
60

- 1
2
3
4 67. Blum,H., Beier,H. and Gross,H.J. Improved silver staining of plant proteins, RNA and DNA in
5 polyacrylamide gels. *Electrophoresis* (1987) 8, 93-99
6
- 7
8 68. Candiano G, Dimuccio V, Bruschi M, et al. Combinatorial peptide ligand libraries for urine
9 proteome analysis: investigation of different elution systems. *Electrophoresis* 2009 Jul;30(14):2405-11.
10 doi: 10.1002/elps.200800762.
- 11
12 69. Pham TK, Roy S, Noirel J, et al. A quantitative proteomic analysis of biofilm adaptation by the
13 periodontal pathogen *Tannerella forsythia*. *Proteomics*. 2010 Sep;10(17):3130-41.
14 doi: 10.1002/pmic.200900448.
- 15
16 70. Ow SY, Cardona T, Taton A, et al. Quantitative shotgun proteomics of enriched heterocysts from
17 *Nostoc* sp. PCC 7120 using 8-plex isobaric peptide tags. *J Proteome Res*. 2008 Apr;7(4):1615-28. doi:
18 10.1021/pr700604v. Epub 2008 Feb 22.
- 19
20 71. Elias JE, Gygi SP. Target-decoy search strategy for increased confidence in large-scale protein
21 identifications by mass spectrometry. *Nat Methods*. 2007 Mar;4(3):207-14.
22
23
24
25
26
27
28
29
30
31
32
33
34
35
36
37
38
39
40
41
42
43
44
45
46
47
48
49
50
51
52
53
54
55
56
57
58
59
60
-

1
2 **Legends:**
3
4
5

6 **Figure 1: Exemplar images showing the changes in the PD fluid proteome over 4 years on**
7 **dialysis in a patient with stable membrane function using 2D PAGE**
8
9

10 10 PDE samples spanning days 9 to 1410 of peritoneal dialysis of approximately 2 ml volume were
11 precipitated with 3.5 volume of acetone/10% TCA and the pellet was re-solubilised in buffer. A volume
12 equivalent to 60µg of protein was subjected to isoelectric focusing on a pH 4-7 IPG strip (Bio-Rad)
13 using passive rehydration with proteins further separated on a Bio-Rad Dodeca gel system and
14 fractionated overnight. Each gel was recovered and silver stained using the Blum method. Gels were
15 scanned on a Genetools densitometer (transmission), entered into PDQuest software and spot
16 patterns compared. Exemplar images from GFS patient G01-029 (stable membrane function).
17
18
19
20
21
22
23
24
25
26
27

28 **Figure 2: Fibrinogen γ -chain (a) and Heparan sulphate proteoglycan (b) are elevated in PD fluid**
29 **with time on PD in a patient with stable membrane function (exemplar images).**
30
31

32 Exemplar images from patient G05-068 (stable membrane function). 10 PD fluid samples were
33 available, ranging from day 30 through to day 3013 on PD that were analysed for spot changes as in
34 figure 1. Protein spots 6001 (a) and 6003 (b) were identified as changing with time on PD by
35 PDQUEST software based on spot volume density. These were excised from the gel and subjected to
36 MALDI-TOF Mass spectrometry. The proteins were identified as fibrinogen γ -chain (a) and heparan
37 sulphate proteoglycan (HSPG) (b). Graphs show a single spot volume density at all 10 timepoints
38 from 1 x 10 gel run. Fibrinogen γ chain gel images depict changes occurring between 2 ½ & 5 years
39 where as HSPG shows images up to 3 years.
40
41
42
43
44
45
46
47
48
49
50
51

52 **Figure 3: Collagen a(1)I (a) and γ -actin (b) are elevated in a patient with EPS 5 years before EPS**
53 **diagnosis (exemplar images)**
54

55 Exemplar images from GFS patients G05-072 (confirmed EPS) and G05-068 (stable membrane
56
57
58
59
60

1
2 function). 5 PD fluid samples were available from patient G05-072, spanning days 1043 to 2868 of
3 PD. These were matched to 5 samples from patient G05-068, based on time from start of PD and
4 comparative 2D SDS-PAGE proteomics undertaken as in figure 1. Two spots as identified with a black
5 arrow in both panels were seen to be consistently elevated in all EPS patients at all time points which
6 was confirmed by volume densitometric analysis. This protein spots were excised from the gel and
7 subjected to MALDI-TOF mass spectrometry. The proteins were identified as a fragment of collagen
8 $\alpha 1(I)$ (a) and as γ -actin (b). Of note, the spot identified by a white arrow in panel (a) at 55kDa was
9 only elevated in this single EPS patient. Graphs show a single spot volume density at all 5 time points
10 from 1 x 10 gel run with the first 5 bars being the identified spot in the EPS sample and the second 5
11 bars the stable patient plotted in chronological area.
12
13
14
15
16
17
18
19
20
21
22
23
24
25

26 **Figure 4: Complement factors I and B increase in EPS 5 years before diagnosis (exemplar**
27 **images).**

28
29 Exemplar images from GFS patients G05-072 (confirmed EPS) and G05-068 (stable membrane
30 function). 5 PD fluid samples were available from patient G05-072, spanning days 1043 to 2868 of
31 PD. These were matched to 5 samples from patient G05-068 based on time from start of PD and
32 comparative 2D SDS-PAGE proteomics performed as figure 1. Two spots that were elevated by
33 volume densitometry in EPS in this and 3 out of 4 other patient comparison runs were identified as
34 complement factor I (black arrow) and complement factor B (white arrow).
35
36
37
38
39
40
41
42
43
44
45
46
47
48

49 **Figure 5: iTRAQ identifies 4 proteins with altered levels in an EPS patient compared to a**
50 **matched control.**

51 Four PD samples from patient G05-072 (confirmed EPS) were matched with 4 PD samples from
52 patient G05-068 (stable membrane function), by time to finishing dialysis. Each sample was
53 precipitated in 3 volumes of acetone/10% TCA, re-dissolved & then buffer exchanged into
54 triethylammonium bicarbonate (TEAB). 50 μ g of protein was denatured in tris-(2-
55
56
57
58
59
60

1
2 carboxyethyl)phosphine and reduced in methylmethane-thiosulfonate prior to trypsin digestion. Each
3
4 sample was then labelled with a different isobariq tag using the 8 label iTRAQ system. All samples
5
6 were mixed, fractionated by RP-HPLC and proteins identified by MODI-TOF MS. For each of 72
7
8 proteins detected, the ratio of each protein was calculated based on the abundance of each isobariq
9
10 tag within that protein sample. Using this approach 4 proteins showed consistent trends.
11
12 Orosomuroid-1 and α 2-HS-glycoprotein chain B were both elevated in the EPS patient some 12
13
14 months before diagnosis, while Apolipoprotein A-IV was always low in EPS with a dramatic late drop in
15
16 serotransferrin. Data shown represents fold change in the confirmed EPS patient compared to the
17
18 patient with stable membrane function and is from a single experimental run.
19
20
21
22
23

24 **Figure 6: ProteoMiner allows detection of lower abundance proteins in PD fluid**

25
26 A PD fluid volume equivalent to 15mg of protein was reduced to 500 μ l volume using a 3kDa molecular
27
28 weight cut off concentrator. 10mg of protein was then subjected to the low abundance protein
29
30 enrichment using the Bio-Rad ProteoMiner™ system using 20 μ l of beads. 100 μ g of eluted protein
31
32 and that from the original PD fluid samples was precipitated using 3 volume acetone/10% TCA and
33
34 comparative analysis performed using 2D SDS PAGE proteomic analysis as in figure 1. The total
35
36 number of resolved protein spots was calculated using PDQUEST.
37
38
39
40

41 **Figure 7: In protein mined PD fluid Intelectin-1 (a) and dermatopontin (b) are elevated in EPS.**

42
43 From a Greek cohort of PD fluid samples (University of Patras), fluid was taken from 3 patients with
44
45 suspected EPS (2 of them confirmed post-portem), 3 patients who had remained on PD for more than
46
47 5 years but had no signs of EPS (late controls) and 3 patients with samples taken within the first
48
49 month of starting PD (early controls). A volume equivalent to 15mg of protein was concentrated and
50
51 subjected to ProteoMiner™ enrichment as in figure 6. Samples were then subjected to 2D SDS-
52
53 PAGE analysis as in figure 1, with spots identified as different between the EPS (column 1), late
54
55 controls (column 2) and early controls (column 3) identified using PDQUEST. Spot 7203 (a) was
56
57
58
59
60

1 identified as being elevated in all 3 patients with EPS, which was confirmed by subsequent volume
2 densitometry measurement of the spot in all 9 samples. Spot 1001 (b) was identified as being
3 elevated in all 3 patients with EPS and one of the late controls, which was confirmed by subsequent
4 volume densitometry measurement of the spot in all 9 samples. These spots were subsequently
5 excised from the gel and identified by MALDI-TOF as intelectin-1 (a) and Dermatoptin (b). Spot
6 volume densitometry from all 3 patients in each group was averaged with data presented as
7 mean \pm SEM in the 2 bar graphs. Significance was determined by 1 way ANOVA, * $p < 0.05$, ** $p < 0.01$
8 compared to early PD control group.
9
10
11
12
13
14
15
16
17
18
19
20

21 **Figure 8: Analysis of pooled samples at four matched time-points using iTRAQ after treatment**
22 **with Proteominer.**
23

24 Patient samples were pooled into 4 groups based on time (>24 mths, 12-24 mths, 6-12 mths , <6
25 mths) to developing EPS or stopping PD. Each pool consisted of equal amounts of protein from each
26 sample available. Post pooling they were processed using ProteoMiner™, iTRAQ labelled,
27 fractionated by RP HPLC and then subjected to tandem MS.
28
29
30
31
32
33
34
35

36 **Figure 9: Hierarchical Cluster analysis (a) and heatmap (b) of proteins detected from proteome-**
37 **mined pooled EPS PD effluent iTRAQ analysis.**
38
39

40 The relative contribution of each pooled cohort to the total level of each protein identified was made
41 based on the abundance of each isobaric tag. The proteins detected in each cohort were then used to
42 position each as a hierarchical cluster. E=EPS, N=Normal (stable PD), E1/N1 = >24 mths, E2/N2 = 12-
43 24, E3/N3 = 6-12 mths and E4/N4= <6Mths to EPS or stopping PD (a). The variation in each protein
44 detected in each cohort was then plotted as a heat map (b). Arrows indicate Intelectin-1 and Gelsolin.
45
46
47
48
49
50
51 Data is from a single run.
52
53
54
55

56 **Figure 10: Relative changes in proteins showing progressive variation with time in pooled**
57

1
2 **cohorts of EPS patients subjected to protein mining and ITRAQ analysis.**
3

4 Relative levels of intelectin-1, Gelsolin, Apolipoprotein A-II and Heamaglobin beta subunit were
5 determined by calculating the ratio to the >24-month cohort level in the patients not developing EPS.
6
7 Data represents ratio to >24month stable patient from a single run of pooled samples.
8
9

10
11
12
13 **Table 1: Proteins detectable by iTRAQ in PD fluid**
14

15 Total proteins identified in PD fluid samples by iTRAQ. Identification is based on at least 3 different
16 identifiable sequences within a protein.
17
18
19
20

21 **Table 2: Top potential hits for EPS bio markers from 2D PAGE & iTRAQ proteomics**
22

23 From all 2D SDS-PAGE proteomics using mined and un-mined samples plus iTRAQ studies, proteins
24 that were significantly altered in at least 75% of patients with EPS and less than 10% of non-EPS
25 patients were short-listed as those most likely to have value as prognostic or diagnostic markers of
26 EPS. For 2D gels data shows number of patients showing the change out of total evaluated.
27
28
29
30
31
32
33

34 **Table 3: Patient Demographics for (a) the GFS and (b) the University of Patras cohorts.**
35

36 Figures are given as mean (SD), median (range) and percentages as appropriate. For iTRAQ
37 analysis of protein mined samples (a), GFS effluent samples were pooled into 4 groups based on time
38 to developing EPS or stopping PD: Group 1; < 6 months prior to EPS or stopping dialysis, Group 2; 6-
39 12 months prior to stopping dialysis, Group 3; 12 to 24 months prior to stopping dialysis and Group 4;
40 greater than 24 months before cessation of dialysis (see also figure 8). Each group consisted of 5 to 7
41 patient samples.
42
43
44
45
46
47
48

49 Comorbidity was documented using the validated Stoke Comorbidity Index, which both categorizes
50 patients into low-risk (score 0), intermediate-risk (score 1–2), and high-risk (score >2) groups and
51 enables analysis by individual comorbid conditions within the index⁽³⁹⁾.
52
53
54

55 For the ProteoMiner™ experiments, a single peritoneal fluid sample was obtained from each of nine
56
57
58
59
60

1
2
3
4
5
6
7
8
9
10
11
12
13
14
15
16
17
18
19
20
21
22
23
24
25
26
27
28
29
30
31
32
33
34
35
36
37
38
39
40
41
42
43
44
45
46
47
48
49
50
51
52
53
54
55
56
57
58
59
60

selected patients from a cohort of Greek PD patients (b).

For Peer Review Only

Patients and Methods

Patient Cohorts, Matching and Sample Collection

Patients were drawn from two cohorts, the Global Fluid Study (GFS), an international, multi-centre, prospective, observational cohort study seeking to relate peritoneal membrane function to local and systemic biomarkers as predictors of predefined clinical endpoints (e.g. patient survival, membrane injury)⁽⁶⁶⁾, and a smaller single-centre cohort of Greek patients. GFS recruited incident (within first 90 days of PD) and prevalent patients from 10 participating centres from the UK, Korea and Canada between June 2002 and December 2008. Dialysate sampling was from a 4-hour peritoneal equilibration test (PET) using a 2.27% glucose bag, with simultaneous clinical data collected and stored in a purpose built Peritoneal Dialysis Access database (PDDb). The study was conducted adhering to the tenets of the Declaration of Helsinki and informed consent was obtained from all patients. Ethical approval was obtained from the Multi-Centre Research Ethics Committee for Wales covering the UK, whilst local country ethics were obtained for other contributing countries.

For this analysis, EPS patients were identified according to ISPD guidelines⁽¹⁾ in 5 UK centres. For 2D gel proteomics, Global patients were matched primarily on the duration of PD and centre, which in some comparisons required 2 control patients. Closer matching was not possible due to the limited number of patients having prolonged exposure to PD. For ITRAQ proteomics, Global patients were matched based on time to EPS. For pooled studies, 10 EPS patients and 18 with stable membrane function were divided into 4 time segments of <6 months, 6 to 12 months, 12 to 24 months and >24 months from EPS or stopping PD (supplemental table 1). Each pool consisted of between 5 and 7 samples which together made up a minimum amount of 18.8mg of starting protein. This protein pool was made up using equivalent protein amounts from all patients contributing to the pool. The

1
2
3 demographic and clinical characteristics of these patients and their controls, including
4 the number of samples analysed and their temporal matching is summarized in Table
5
6
7 3a.

8
9 To optimise ProteoMiner™ for use with PDE, experiments requiring larger
10 dialysate volumes, samples from a smaller PD effluent repository based at the
11 University Hospital of Patras, Greece were used. This repository was created in
12 2009 with the aim to collect samples of peritoneal tissue and PDE, to study potential
13 correlations between effluent markers of inflammation and fibrosis and biopsy
14 findings at catheter placement and removal. The project, was approved by the Ethics
15 Committee of the University Hospital of Patras and informed consent was obtained
16 from incident (scheduled for peritoneal catheter placement) and prevalent patients
17 receiving PD treatment in the same centre. 100ml PDE samples from overnight (8-
18 hour) dwells (Physioneal® 40 Glucose 1.36% w/v, Baxter Healthcare Ltd.) were
19 collected at recruitment (within the first month from PD start for incident patients) and
20 at 6-month intervals thereafter. Samples were also obtained at PD stop, due to
21 kidney transplant or transfer to hemodialysis. At each sampling visit, clinical and
22 demographic data were collected and stored in a database. For the present analysis
23 a single sample from each of nine selected patients was analysed. Selected patients
24 included three incident patients, three prevalent patients with >5 years on PD and
25 stable membrane function and three prevalent patients with suspected EPS based on
26 clinical presentation. In two of the latter, EPS diagnosis was confirmed at autopsy.
27 The third patient was lost to follow up after having been transferred to hemodialysis
28 at another institution. The demographic and clinical characteristics of these patients
29 are summarized in Table 3b.

30 31 32 33 34 35 36 37 38 39 40 41 42 43 44 45 46 47 48 49 50 51 52 53 54 **Sample preparation**

55 All samples were stored in -80° C and thawed for aliquoting and just prior to
56 use in experiments. Total protein was precipitated using 3.5 volumes of acetone
57
58
59
60

1
2
3 chilled at -20°C and 0.5 volumes of 100%TCA for every volume of sample.
4
5 Subsequently, samples were centrifuged in a Sigma 3-18 centrifuge (Sigma
6
7 Laborzentrifugen GmbH, Germany) at 4248 RCF for 40 minutes, at a temperature of
8
9 10°C . The protein pellet was re-solubilised in 500 μl of buffer containing 8M urea, 2M
10
11 thiourea, 4% CHAPS, 0.2% (v/v) ampholytes (pH 4–7, 100 mM DTT, 40 mM
12
13 Tris–base, and 0.0002% bromophenol blue in 18.2M Ohm water. To facilitate re-
14
15 solubilisation, samples were vortexed for 30 seconds and sonicated in a cold water
16
17 bath for 15 minutes. Following re-solubilisation, protein concentration was
18
19 determined using the Thermo Scientific Pierce 660nm Protein Assay (Thermo Fisher
20
21 Scientific Rockford, IL., U.S.A), according to manufacturer's instructions. A volume
22
23 corresponding to 60 μg of protein was increased to a final volume of 350 μl by adding
24
25 solubilisation buffer. This volume was loaded on a pH 4-7 immobilised pH gradient
26
27 (IPG) strip (Bio-Rad Laboratories Ltd., Hercules, CA, U.S.A.), covered with 3ml of
28
29 mineral oil and left overnight to allow complete absorption on the strip.
30
31

32 33 **Isoelectric Focusing**

34
35 Loaded IPG strips were subjected to isoelectric focusing (IEF) using a
36
37 PROTEAN IEF system (Bio-Rad Laboratories Ltd., Hercules, CA, U.S.A.). Default
38
39 temperature was set to 20°C . A four-step programme was used as follows: Step 1:
40
41 250V over 4.5 hours. Step 2: linear increase up to 10,000V over 2.5 hours. Step 3:
42
43 instant increase up to 10,000V until 50,000 V*h were completed. Step 4: instant
44
45 decrease down to 500V until 70,000 V*h were completed.
46
47
48

49 50 **SDS-PAGE**

51
52 Following isoelectric focusing, IPG strips were bathed in 2% DTT followed by
53
54 2.5% iodoacetamide in equilibration buffer for 15 minutes. Equilibration buffer
55
56 contained 36% (w/v) urea, 20% glycerol, 2% SDS and 0.005M Tris-HCl (pH 8.8).
57
58 Proteins were subsequently fractionated on a 20 x 23cm 10% polyacrylamide gel
59
60

1
2
3 containing 0.1% SDS, 2.5% Rhinohide™ (Invitrogen™), 0.05% APS, 0.025% TEMED
4
5 and 0.375M Tris-HCl. After casting the gels in the casting chamber, 1ml of 50:50
6
7 water saturated butan-2-ol was added on top of each gel to remove air bubbles and
8
9 create a flat surface where the IPG could be applied. 1% overlay agarose (with
10
11 Bromophenol Blue to observe dye front) secured the IPG. Gels were allowed to set
12
13 for 2 hours, then washed 3 times with ultra-pure water and finally washed with
14
15 running buffer (25 mM Tris, 192 mM glycine, 0.1% SDS, pH 8.3) and stored at 4°C
16
17 until use. For SDS-PAGE a PROTEAN Plus Dodeca Cell system was used (Bio-Rad
18
19 Laboratories Ltd., Hercules, CA, U.S.A.). Voltage was set to 80V for a minimum of 4
20
21 hours and then turned down to 40V until electrophoresis was complete.
22
23
24

25 **Gel fixing and silver staining**

26
27 After electrophoresis, each gel bathed in fixing solution containing 40%
28
29 methanol and 10% acetic acid in deionized water for 2 hours. Subsequently gels
30
31 were washed with 30% ethanol in water, 3 times for 20 minutes each. For silver
32
33 staining, an optimised protocol based on the method described by Blum et al. was
34
35 used⁽⁶⁷⁾ First gels bathed in 0.035% sodium thiosulfate for 90 seconds and then
36
37 were washed with deionized water 3 times, 20 seconds each. Subsequently, 0.2%
38
39 silver nitrate, 0.02% formaldehyde solution was added for 20 minutes and then gels
40
41 were washed again 3 times with deionized water, for 20 seconds each. Silver
42
43 solution was followed by the developer solution containing 3% sodium carbonate,
44
45 0.003% sodium thiosulfate pentahydrate and 0.05% formaldehyde. The developer
46
47 solution was decanted after 5 minutes, provided that visualization of protein spots
48
49 was clear. Two 30 second washes with water followed before the stop solution
50
51 containing 0.5% glycine was added for 10 minutes. Finally, the stop solution was
52
53 decanted and gels were washed with water twice, for 30 minutes each time.
54
55
56
57

58 **Gel Imaging**

1
2
3 Gels were scanned on a Genetools densitometer (transmission). PD Quest
4
5 v8.0 (Bio-Rad Laboratories Ltd., Hercules, CA, U.S.A.) was used for analysis of the
6
7 gel images.
8
9

10 11 **Proteome mining**

12
13 This was undertaken using the Proteominer™ small capacity kit (Biorad,
14
15 Laboratories Ltd., Hercules, CA, U.S.A.). A volume of sample corresponding to
16
17 15mg of protein was centrifuged using a 3kDa cut-off filter until reduced to 500µl.
18
19 Subsequently, volumes corresponding to 10mg of protein were mined as per
20
21 manufacturer's instructions using a ratio of 20µl of beads to 10 mg of protein. Elution
22
23 with 8M urea/2% CHAPS rehydrated with 5% acetic acid, was followed by a second
24
25 elution using 4% boiling SDS, 25mM DTT to increase recovery⁽⁶⁸⁾ Finally, protein
26
27 concentration was determined prior to isoelectric focusing or iTRAQ.
28
29
30

31 **iTRAQ**

32
33 iTRAQ provides a method for simultaneous protein identification and relative
34
35 quantification in multiplex format. It is a widely used quantitative proteomic strategy in
36
37 clinical proteomic research, including for biomarker discovery. During
38
39 iTRAQ analysis, peptides from each sample (post proteolytic digestion preparation
40
41 step) are labeled with one of the set of reagents, then combined. The iTRAQ
42
43 reagents are isobaric and thus a labeled peptide set (for a specific amino acid
44
45 sequence) will have the same mass in all samples at this stage. Peptide identity and
46
47 the samples in which it is found is determined by tandem mass spectrometry, which
48
49 selects a specific set of peptides for fragmentation to yield sequence ions and ions
50
51 for relative quantification. This data provides information on the relative abundance
52
53 of a particular peptide across all samples within the experiment. Quantification data
54
55 is based on unique low mass 'reporter ion' (to each iTRAQ label). Reporter ion
56
57 intensity information is used to calculate fold change relative to a designated control.
58
59
60

1
2
3 We used an in house statistical analysis pipeline, as detailed in Pham et al. 2010⁽⁶⁹⁾
4
5 to i) integrate all the peptide measurement data to the protein level and ii) to
6
7 determine proteins altered in level between samples (p value <0.05). Sample labeling
8
9 with iTRAQ reagents was performed as described elsewhere⁽⁷⁰⁾ and as
10
11 recommended by the manufacturer. One hundred micrograms of protein from each
12
13 sample (or pool) was reduced, alkylated then digested with trypsin, prior to labeling
14
15 (iTRAQ[®] Reagents – 8plex, AB Sciex[™], Framingham, MA, USA).
16
17
18
19
20
21
22
23

24 **Strong Cation Exchange (SCX) Fractionation of Peptides**

25
26
27
28 The fractionation was performed as described elsewhere⁽⁴¹⁾. Briefly, SCX was
29
30 carried out using a PolySULFOETHYL[™] A Column (PolyLC, Columbia, MD) 5 µm
31
32 particle size of 200 mm length × 2.1 mm id, 200 Å pore size, on a BioLC HPLC unit
33
34 (Dionex, Surrey, UK). The 60-min gradient was generated between Buffer A (10 mM
35
36 KH₂PO₄ and 25% acetonitrile, pH 3.0), and Buffer B (10 mM KH₂PO₄, 25%
37
38 acetonitrile and 500 mM KCl, pH 3.0), and consisted of 100% A for 5 min, 5–30% B
39
40 for 40 min, 30–100% B for 5 min, 100% B for 5 min and finally 100% A for 5 min. The
41
42 chromatogram was monitored through a UV Detector (Dionex/LC Packings,
43
44 Amsterdam, the Netherlands), at 214 nm. Individual SCX fractions were pooled for
45
46 subsequent nano-LC-MS/MS analysis. Pooled fractions were dried in a vacuum
47
48 concentrator (Eppendorf, Hamburg, Germany), and stored at –20°C prior to analysis
49
50
51 by mass spectrometry.
52
53
54

55 **Mass Spectrometry (MS)**

56
57
58
59
60

1
2
3 Each peptide fraction was re-dissolved in 20 μ l of 0.1% formic acid and 3%
4 acetonitrile and then 6 μ l of sample was injected into the nano-LC-ESI-MS/MS
5 system for analysis. Mass spectrometry was performed using a Q-Star XL Hybrid
6 ESI Quadrupole time-of-flight tandem mass spectrometer, ESI-qQ-TOF-MS/MS
7 (Applied Biosystems; MDS-Sciex) coupled to an online capillary liquid
8 chromatography system (U3000, Thermo, Hemel Hempstead, UK). Peptides were
9 separated on a PepMap C-18 RP capillary column (LC Packings), with a constant
10 flow rate of 0.3 μ l/min. The LC gradient started with 3% Buffer B (0.1% formic acid in
11 97% acetonitrile) and 97% Buffer A (0.1% formic acid in 3% acetonitrile) for 3 min,
12 followed by 3–30% Buffer B for 90 min, then 90% Buffer B for 7 min, and finally 3%
13 Buffer B for 8 min. The mass spectrometer was set to perform data acquisition in the
14 positive ion mode, with a selected mass range of 400–1,600 m/z . Peptides with +2 to
15 +4 charge states were selected for tandem mass spectrometry, and the time of
16 summation of MS/MS events was set to 3 sec. The two most abundantly charged
17 peptides above a threshold of five counts were selected for MS/MS, and dynamically
18 excluded for 60 sec with a ± 50 mmu mass tolerance.
19
20
21
22
23
24
25
26
27
28
29
30
31
32
33
34
35
36
37

38 MS Data Analysis

39 Peak list conversion was performed using the mascot.dll embedded script
40 (V1.6) coupled with Analyst QS 1.1.1 (ABSCIEX, Framingham, MA, USA) with
41 MS/MS group summations and the iTRAQ region deisotoping removed. Protein
42 identification and relative quantification was carried out in Phenyx v2.6 (GeneBio
43 S.A., Geneva, Switzerland), using a human protein database. General search
44 parameters allowed for MS and MS/MS tolerance up to 0.1 Da and one missed
45 cleavage. Fixed protein modifications included iTRAQ lysine and iTRAQ N-terminus
46 (+304 Da) and methyl-thiol of cysteines (+46 Da), variable modifications were
47 oxidation of methionine (+16 Da). The acceptance parameters for peptide
48
49
50
51
52
53
54
55
56
57
58
59
60

1
2
3 identification were peptide length ≥ 6 , z-score ≥ 5.0 and p-value $\leq 1.0 \times 10^{-4}$. False
4
5 discovery rate (FDR) was calculated using a decoy database automatically created
6
7 by reversing the sequences from the target database⁽⁷¹⁾ and was found to be 1%.
8
9 Bias normalization for whole proteome analyses were also performed by correcting
10
11 the bias median ratio of each comparison toward unity. Figures show exemplar data
12
13 and samples for iTRAQ were pooled and thus do not include standard errors. For
14
15 Figure 7, multiple samples from 2D-gels have been combined to provide a mean and
16
17 therefore the standard error was calculated.
18
19
20
21
22
23
24
25
26
27
28
29
30
31
32
33
34
35
36
37
38
39
40
41
42
43
44
45
46
47
48
49
50
51
52
53
54
55
56
57
58
59
60

Peer Review Only

Supplemental Table 1: Patient sample matching for 2D gel comparisons

Patient Code EPS vs Stable PD	Days from starting PD				
	Point 1	Point 2	Point 3	Point 4	Point 5
G05-072 vs. G05-068	1043 vs 1089	1448 vs 1490	2429 vs 2430	2538 vs 2564	2868 vs 2013
G05-134 vs G01-029	9 vs 9	181 vs 203	376 vs 203	933 vs 870	-
G03-016 vs G03-022	772 vs 828	870 vs 869	1141 vs 1136	1297 vs 1213	-
G01 001 vs G01 030	1204 vs 1142	1567 vs 1497	2177 vs 2241	2350 vs 2439	-
G01-001 vs G01-15	774 vs 785	960 vs 953	1142 vs 1165	1346 vs 1347	-
G05-018 vs G03-006	34 vs 90	258 vs 294	435 vs 447	664 vs 665	-
G05-72 vs G0157	2009 vs 2170	2429 vs 2382	2638 vs 2501	2868 vs 2737	-

EPS and stable PD patient samples were matched at up to 5 time points from the date of starting PD for 2D Gel proteomic analysis. Each comparison shows the day that the sample was collected from the EPS patient versus the day from the stable PD patient

**Supplemental table 2: Breakdown of EPS and control sample pooling for
iTRAQ analysis on protein mined PDE**

Patient Code	Condition	<6 months	6-12 Mths	12-24 Mths	>24 Months	Number of Time points
G05-072	EPS	Y	Y	Y	Y	4
G05-134	EPS	Y		Y		2
G03-016	EPS	Y		Y	Y	3
G05-092	EPS	Y				1
G05-010	EPS	Y	Y			2
G01-008	EPS		Y	Y	Y	3
G05-029	EPS		Y			1
G05-018	EPS		Y	Y		2
G01-001	EPS				Y	1
G02-052	EPS				Y	1
EPS pooled @ each time point		5	5	5	5	
G05-042	Stable PD	Y				1
G05-002	Stable PD	Y				1
G03-006	Stable PD	Y				1
G05-093	Stable PD	Y	Y			2
G03-021	Stable PD	Y		Y		2
G05-050	Stable PD	Y				1
G05-090	Stable PD		Y			1
G05-123	Stable PD		Y			1
G01-011	Stable PD		Y	Y	Y	3
G05-077	Stable PD		Y			1
G05-119	Stable PD			Y		1
G05-026	Stable PD			Y		1
G03-018	Stable PD			Y	Y	2
G05-085	Stable PD			Y		1
G05-041	Stable PD				Y	1
G01-031	Stable PD				Y	1
G05-069	Stable PD				Y	1
G01-069	Stable PD				Y	1
G02-066	Stable PD				Y	1
Stable pooled @ each time point		6	5	6	7	

EPS samples were pooled by time to developing EPS or stopping PD with stable function into cohorts of <6 months, 6-12 months, 12-24 months and >24 months. Each pool contained samples that together gave a minimum of 18.8 mg of protein. All patients (5 to 7) in a pool contributed an equal amount of protein. Some patients contributed to all pools, and some just 1. Y denotes inclusion in the pool. GXX denotes the centre and the following number the patient at that centre.

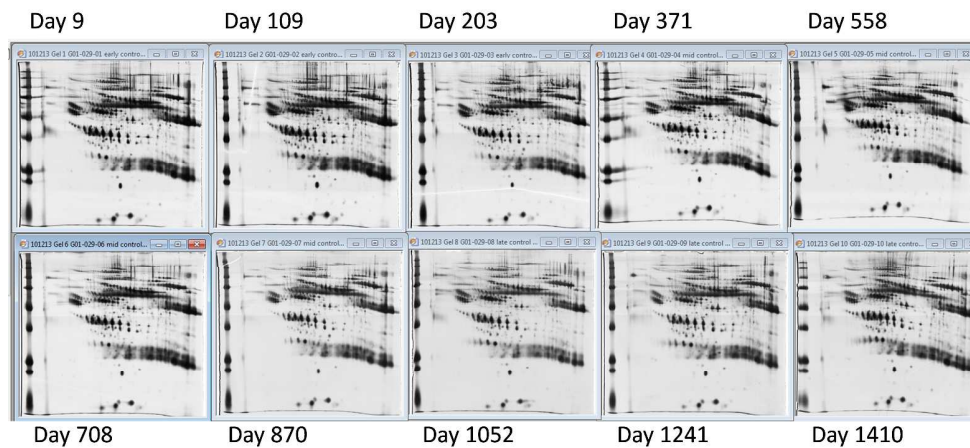


Figure 1: Exemplar images showing the changes in the PD fluid proteome over 4 years on dialysis in a patient with stable membrane function using 2D PAGE

10 PDE samples spanning days 9 to 1410 of peritoneal dialysis of approximately 2 ml volume were precipitated with 3.5 volume of acetone/10% TCA and the pellet was re-solubilised in buffer. A volume equivalent to 60µg of protein was subjected to isoelectric focusing on a pH 4-7 IPG strip (Bio-Rad) using passive rehydration with proteins further separated on a Bio-Rad Dodeca gel system and fractionated overnight. Each gel was recovered and silver stained using the Blum method. Gels were scanned on a Genetools densitometer (transmission), entered into PDQuest software and spot patterns compared. Exemplar images from GFS patient G01-029 (stable membrane function).

Figure 1
1270x952mm (120 x 120 DPI)

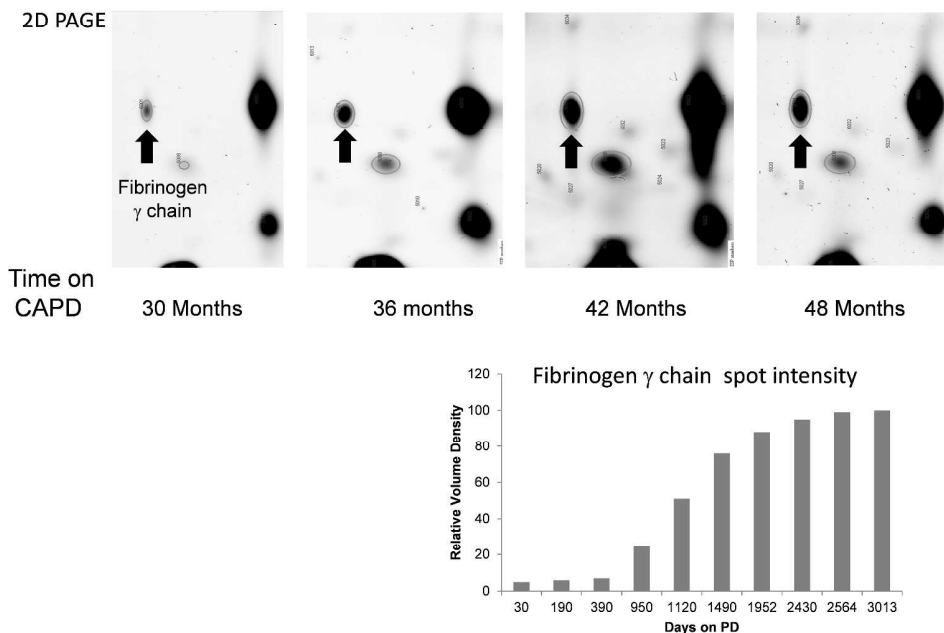


Figure 2: Fibrinogen γ -chain (a) and Heparan sulphate proteoglycan (b) are elevated in PD fluid with time on PD in a patient with stable membrane function (exemplar images).

Exemplar images from patient G05-068 (stable membrane function). 10 PD fluid samples were available, ranging from day 30 through to day 3013 on PD that were analysed for spot changes as in figure 1. Protein spots 6001 (a) and 6003 (b) were identified as changing with time on PD by PDQUEST software based on spot volume density. These were excised from the gel and subjected to MALDI-TOF Mass spectrometry. The proteins were identified as fibrinogen γ -chain (a) and heparan sulphate proteoglycan (HSPG) (b). Graphs show a single spot volume density at all 10 timepoints from 1 x 10 gel run. Fibrinogen γ chain gel images depict changes occurring between 2 1/2 & 5 years where as HSPG shows images up to 3 years.

Figure 2a
1270x952mm (120 x 120 DPI)

AMV

1
2
3
4
5
6
7
8
9
10
11
12
13
14
15
16
17
18
19
20
21
22
23
24
25
26
27
28
29
30
31
32
33
34
35
36
37
38
39
40
41
42
43
44
45
46
47
48
49
50
51
52
53
54
55
56
57
58
59
60

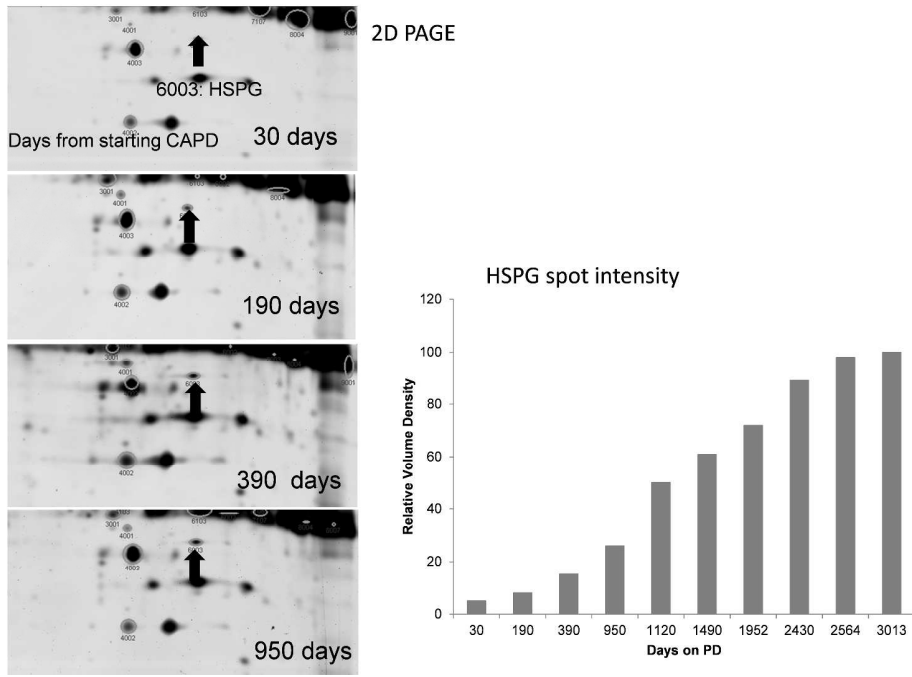


Figure 2: Fibrinogen γ -chain (a) and Heparan sulphate proteoglycan (b) are elevated in PD fluid with time on PD in a patient with stable membrane function (exemplar images).

Exemplar images from patient G05-068 (stable membrane function). 10 PD fluid samples were available, ranging from day 30 through to day 3013 on PD that were analysed for spot changes as in figure 1. Protein spots 6001 (a) and 6003 (b) were identified as changing with time on PD by PDQUEST software based on spot volume density. These were excised from the gel and subjected to MALDI-TOF Mass spectrometry. The proteins were identified as fibrinogen γ -chain (a) and heparan sulphate proteoglycan (HSPG) (b). Graphs show a single spot volume density at all 10 timepoints from 1 x 10 gel run. Fibrinogen γ chain gel images depict changes occurring between 2 1/2 & 5 years where as HSPG shows images up to 3 years.

Figure 2b
1270x952mm (120 x 120 DPI)

NY

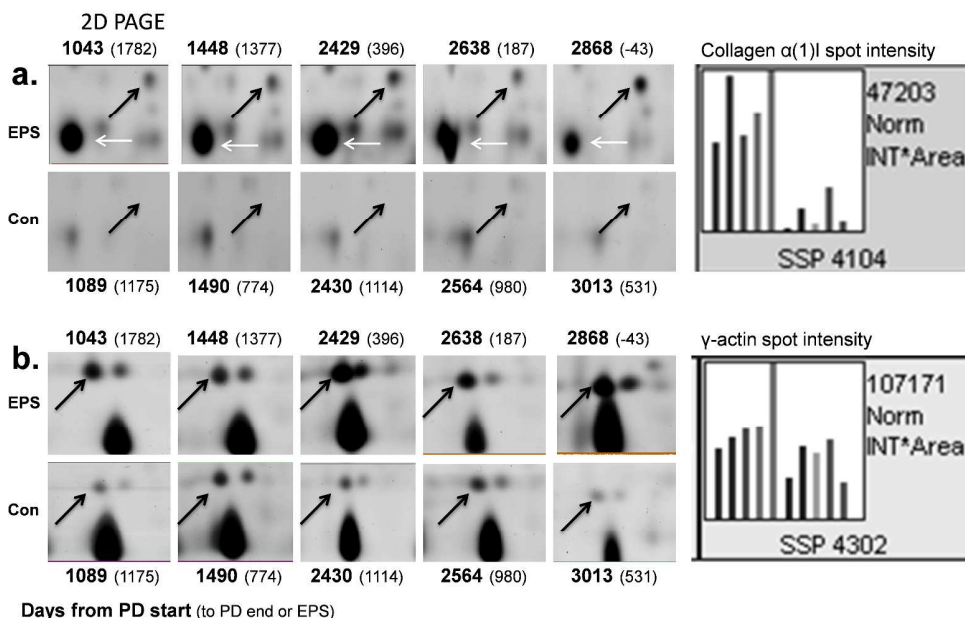
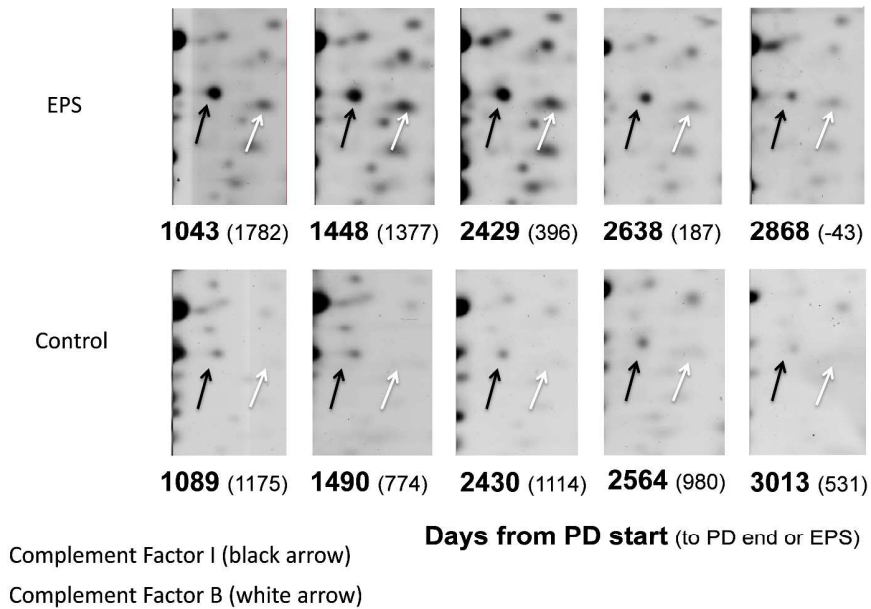


Figure 3: Collagen α(1)I (a) and γ-actin (b) are elevated in a patient with EPS 5 years before EPS diagnosis (exemplar images)

Exemplar images from GFS patients G05-072 (confirmed EPS) and G05-068 (stable membrane function). 5 PD fluid samples were available from patient G05-072, spanning days 1043 to 2868 of PD. These were matched to 5 samples from patient G05-068, based on time from start of PD and comparative 2D SDS-PAGE proteomics undertaken as in figure 1. Two spots as identified with a black arrow in both panels were seen to be consistently elevated in all EPS patients at all time points which was confirmed by volume densitometric analysis. This protein spots were excised from the gel and subjected to MALDI-TOF mass spectrometry. The proteins were identified as a fragment of collagen α1(I) (a) and as γ-actin (b). Of note, the spot identified by a white arrow in panel (a) at 55kDa was only elevated in this single EPS patient. Graphs show a single spot volume density at all 5 time points from 1 x 10 gel run with the first 5 bars being the identified spot in the EPS sample and the second 5 bars the stable patient plotted in chronological area.

Figure 3a, Figure 3b
1270x952mm (120 x 120 DPI)





32 Figure 4: Complement factors I and B increase in a patient with EPS 5 years before diagnosis (exemplar
33 images).!! † Exemplar images from GFS patients G05-072 (confirmed EPS) and G05-068 (stable membrane
34 function). 5 PD fluid samples were available from patient G05-072, spanning days 1043 to 2868 of
35 PD. These were matched to 5 samples from patient G05-068 based on time from start of PD and
36 comparative 2D SDS-PAGE proteomics performed as figure 1. Two spots that were elevated by volume
37 densitometry in EPS in this and 3 out of 4 other patient comparison runs were identified as complement
38 factor I (black arrow) and complement factor B (white arrow).!! †

39 Figure 4
40 1270x952mm (120 x 120 DPI)

41
42
43
44
45
46
47
48
49
50
51
52
53
54
55
56
57
58
59
60

Only

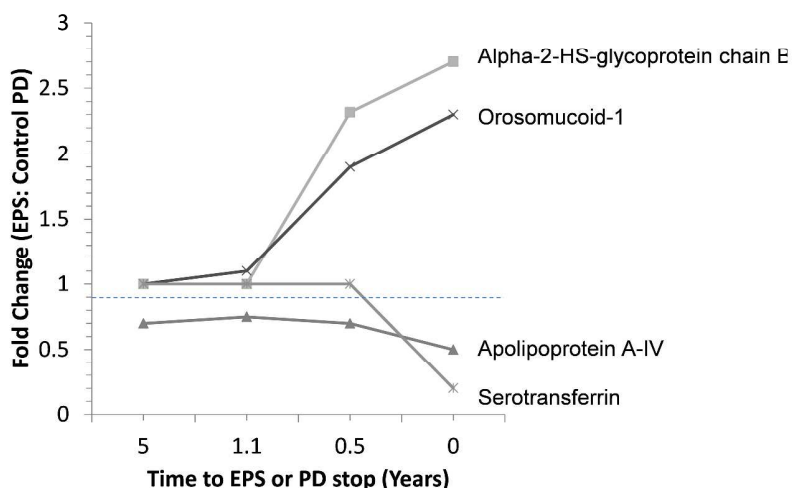
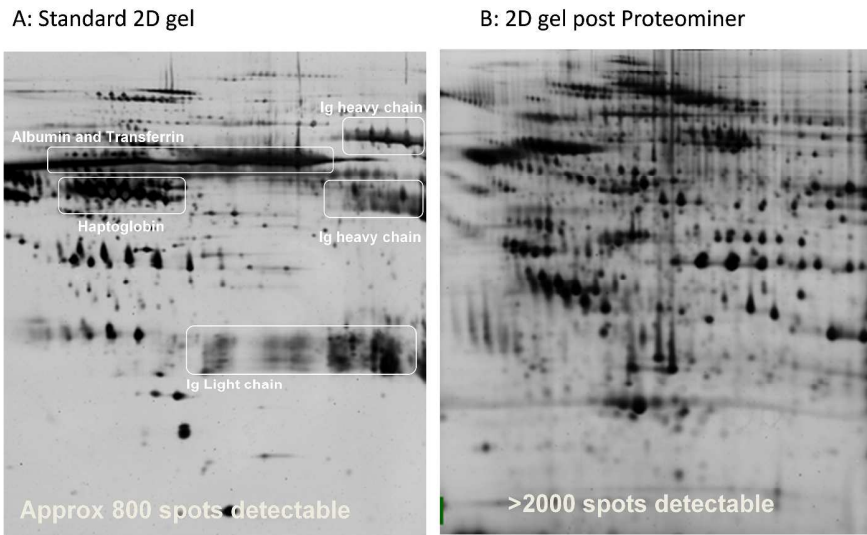


Figure 5: iTRAQ identifies 4 proteins with altered levels in an EPS patient compared to a matched control. Four PD samples from patient G05-072 (confirmed EPS) were matched with 4 PD samples from patient G05-068 (stable membrane function), by time to finishing dialysis. Each sample was precipitated in 3 volumes of acetone/10% TCA, re-dissolved & then buffer exchanged into triethylammonium bicarbonate (TEAB). 50 µg of protein was denatured in tris-(2-carboxyethyl)phosphine and reduced in methylmethane-thiosulfonate prior to trypsin digestion. Each sample was then labelled with a different isobariq tag using the 8 label iTRAQ system. All samples were mixed, fractionated by RP-HPLC and proteins identified by MODI-TOF MS. For each of 72 proteins detected, the ratio of each protein was calculated based on the abundance of each isobariq tag within that protein sample. Using this approach 4 proteins showed consistent trends. Orosomuroid-1 and α2-HS-glycoprotein chain B were both elevated in the EPS patient some 12 months before diagnosis, while Apolipoprotein A-IV was always low in EPS with a dramatic late drop in serotransferrin. Data shown represents fold change in the confirmed EPS patient compared to the patient with stable membrane function and is from a single experimental run.

Figure 5
1270x952mm (120 x 120 DPI)





32 Figure 6: ProteoMiner™ allows detection of lower abundance proteins in PD fluid

33 A PD fluid volume equivalent to 15mg of protein was reduced to 500µl volume using a 3kDa molecular
 34 weight cut off concentrator. 10mg of protein was then subjected to the low abundance protein enrichment
 35 using the Bio-Rad ProteoMiner™ system using 20µl of beads. 100 µg of eluted protein and that from the
 36 original PD fluid samples was precipitated using 3 volume acetone/10% TCA and comparative analysis
 37 performed using 2D SDS PAGE proteomic analysis as in figure 1. The total number of resolved protein spots
 38 was calculated using PDQUEST.

39 Figure 6A, Figure 6B
 40 1270x952mm (120 x 120 DPI)

41
42
43
44
45
46
47
48
49
50
51
52
53
54
55
56
57
58
59
60

Only

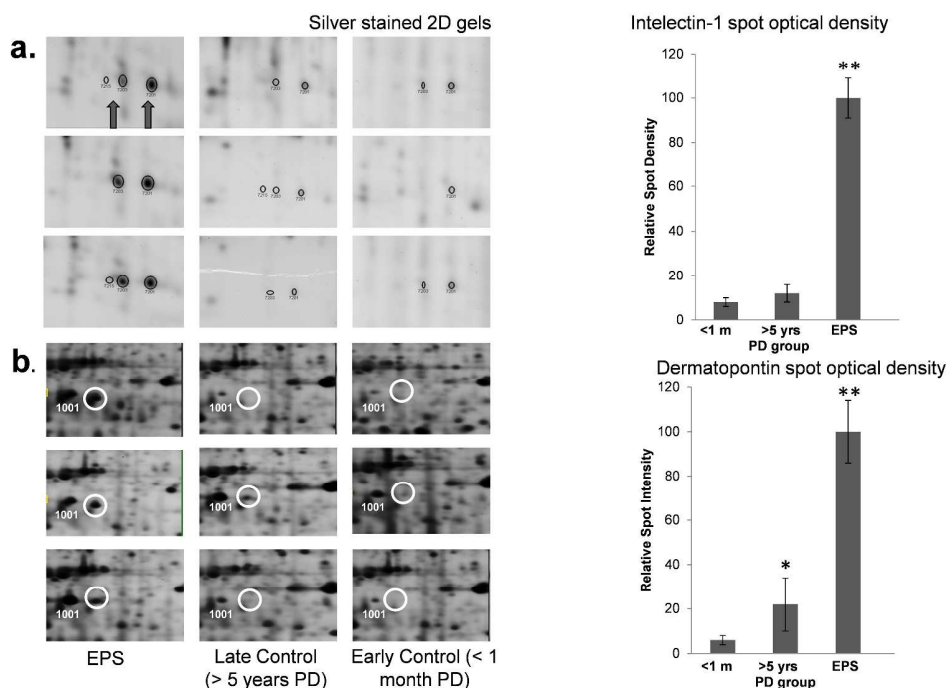


Figure 7: In protein mined PD fluid Intelectin-1 (a) and dermatopontin (b) are elevated in EPS. From a Greek cohort of PD fluid samples (University of Patras), fluid was taken from 3 patients with suspected EPS (2 of them confirmed post-portem), 3 patients who had remained on PD for more than 5 years but had no signs of EPS (late controls) and 3 patients with samples taken within the first month of starting PD (early controls). A volume equivalent to 15mg of protein was concentrated and subjected to ProteoMiner™ enrichment as in figure 6. Samples were then subjected to 2D SDS-PAGE analysis as in figure 1, with spots identified as different between the EPS (column 1), late controls (column 2) and early controls (column 3) identified using PDQUEST. Spot 7203 (a) was identified as being elevated in all 3 patients with EPS, which was confirmed by subsequent volume densitometry measurement of the spot in all 9 samples. Spot 1001 (b) was identified as being elevated in all 3 patients with EPS and one of the late controls, which was confirmed by subsequent volume densitometry measurement of the spot in all 9 samples. These spots were subsequently excised from the gel and identified by MALDI-TOF as intelectin-1 (a) and Dermatopontin (b). Spot volume densitometry from all 3 patients in each group was averaged with data presented as mean±SEM in the 2 bar graphs. Significance was determined by 1 way ANOVA, * p<0.05, ** p<0.01 compared to early PD control group.

Figure 7a, Figure 7b
1270x952mm (120 x 120 DPI)

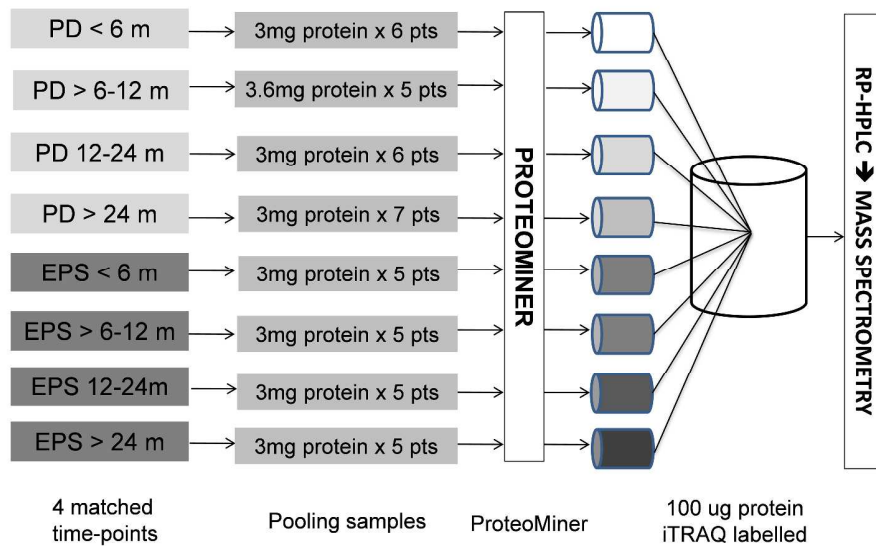


Figure 8: Analysis of pooled samples at four matched time-points using iTRAQ after treatment with ProteoMiner™. Patient samples were pooled into 4 groups based on time (>24 mths, 12-24 mths, 6-12 mths, <6 mths) to developing EPS or stopping PD. Each pool consisted of equal amounts of protein from each sample available. Post pooling they were processed using ProteoMiner™, iTRAQ labelled, fractionated by RP HPLC and then subjected to tandem MS.

Figure 8
1270x952mm (120 x 120 DPI)

Only

1
2
3
4
5
6
7
8
9
10
11
12
13
14
15
16
17
18
19
20
21
22
23
24
25
26
27
28
29
30
31
32
33
34
35
36
37
38
39
40
41
42
43
44
45
46
47
48
49
50
51
52
53
54
55
56
57
58
59
60

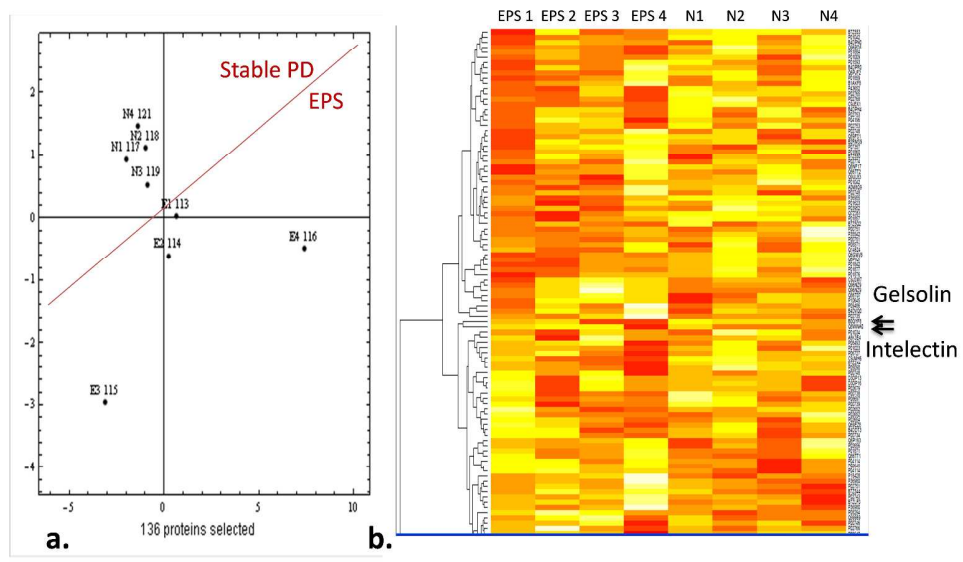


Figure 9: Hierarchical Cluster analysis (a) and heatmap (b) of proteins detected from proteome-mined pooled EPS PD effluent iTRAQ analysis. The relative contribution of each pooled cohort to the total level of each protein identified was made based on the abundance of each isobariq tag. The proteins detected in each cohort were then used to position each as a hierarchical cluster. E=EPS, N=Normal (stable PD), E1/N1 = >24 mths, E2/N2 = 12-24, E3/N3 = 6-12 mths and E4/N4= <6Mths to EPS or stopping PD (a). The variation in each protein detected in each cohort was then plotted as a heat map (b). Arrows indicate Intellectin-1 and Gelsolin. Data is from a single run.

Figure 9a, Figure 9b
1270x952mm (120 x 120 DPI)

only

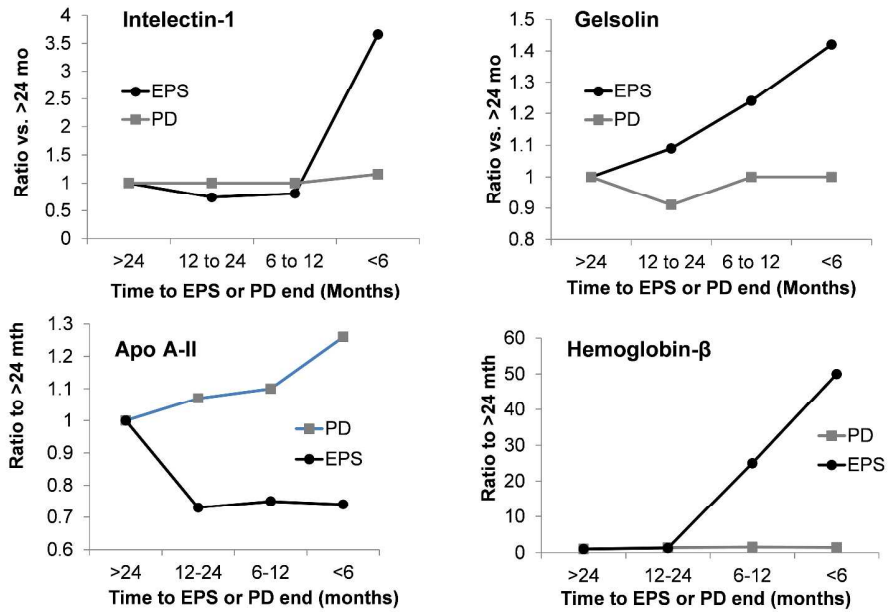


Figure 10: Relative changes in proteins showing progressive variation with time in pooled cohorts of EPS patients subjected to protein mining and ITRAQ analysis. Relative levels of intelectin-1, Gelsolin, Apolipoprotein A-II and Heamaglobin beta subunit were determined by calculating the ratio to the >24-month cohort level in the patients not developing EPS. Data represents ratio to >24month stable patient from a single run of pooled samples.

Figure 10
1270x952mm (120 x 120 DPI)

Only

Table 1: Proteins detectable by iTRAQ in whole proteome F

1		
2		
3		
4		
5		
6		
7	Serum albumin	Zinc-alpha-2-glycoprotein (Zn-alpha-2-glycoprotein)
8	Serotransferrin (Transferrin)	Beta-2-microglobulin form pl 5.3
9	cDNA FLJ78387	Ig gamma-2 chain C region
10	Short peptide from AAT (SPAAT)	Fibrinopeptide A
11		
12		
13	Haptoglobin beta chain	Alpha-1B-glycoprotein
14		
15	Fibrinogen alpha chain, isoform CRA_c	Alpha-1-acid glycoprotein 2 (AGP 2) (OMD 2)
16	Apolipoprotein A-I(1-242)	Complement component 4A (Rodgers blood group)
17	Cyclosporin A transporter 1	cDNA FLJ53691, highly similar to Serotransferrin
18	Trypstatin	Fibrinogen beta chain, isoform CRA_e
19	Apolipoprotein A-IV (ApoA-IV) (ApoA-IV)	Low molecular weight growth-promoting factor
20		
21		
22	Alpha-1-acid glycoprotein 1 (AGP 1) (OMD 1)	Alpha-2-HS-glycoprotein chain B
23	Complement C3c alpha' chain fragment 2	Complement factor H
24	Ig gamma-3 chain C region	LVV-hemorphin-7
25	Ig alpha-1 chain C region	cDNA FLJ51265, similar to Beta-2-glycoprotein 1
26		
27		
28	Alpha-2-HS-glycoprotein chain B	Putative uncharacterized protein AZGP1
29	Hemopexin	Complement factor B Bb fragment
30	Alpha-1-antichymotrypsin His-Pro-less	Ig kappa chain V-III region NG9
31	Fibrinogen gamma chain, isoform CRA_a	Leucine-rich alpha-2-glycoprotein (LRG)
32	Alpha-2-macroglobulin (Alpha-2-M)	Ig kappa chain V-III region CLL
33	Ig kappa chain C region	Histidine-rich glycoprotein, isoform CRA_a
34	Transthyretin	Cystatin-C
35	HCG1778670	Complement component C9b
36	Retinol binding protein 4, plasma, isoform CRA_a	Myosin-reactive immunoglobulin heavy chain variable region
37	cDNA FLJ53327, highly similar to Gelsolin	Complement factor D
38		Ig kappa chain V-I region EU
39		
40		
41		
42		
43		
44		
45		
46		
47		
48		
49		
50		
51		
52		
53		
54		
55		
56		
57		
58		
59		
60		

VD fluid

1
2
3
4
5
6
7
8 Vitamin D-binding protein (DBP) (VDB)

9 Antithrombin

10 Cryocryoglobulin CC1 kappa light chain variable region

11 Cryocryoglobulin CC2 lambda light chain variable region

12 cDNA FLJ37971 fis, clone CTONG2009958, highly similar to
13 CERULOPLASMIN (EC 1.16.3.1)

14 cDNA FLJ39644 fis, clone SMINT2004037, highly similar to CHLORIDE
15 CHANNEL PROTEIN 7

16 cDNA FLJ52255, highly similar to Angiotensinogen

17 Thrombin heavy chain [CHAIN 1]

18 Apolipoprotein C-III (Apo-CIII) (ApoC-III)

19 Ugl-Y3

20 Inter-alpha-trypsin inhibitor heavy chain H1 (Inter-alpha-inhibitor heavy chain
21 1) (ITI heavy chain H1) (ITI-HC1) (SHAP)

22 Prostaglandin-H2 D-isomerase (PGD2 synthase) (PGDS2) (PGDS)

23 IGL@ protein

24 Nuclear fragile X mental retardation-interacting protein 2 (82-FIP)

25 Full-length cDNA clone CS0DD006YL02 of Neuroblastoma of Homo sapiens
26 (human)

27 Zinc finger protein 527

28 Uncharacterized protein C7orf62

29 Kelch-like protein 3 [ISOFORM C]

30 Myosin-reactive immunoglobulin light chain variable region
31
32
33
34
35
36
37
38
39
40
41
42
43
44
45
46
47
48
49
50
51
52
53
54
55
56
57
58
59
60

1
2
3
4
5
6
7
8
9
10
11
12
13
14
15
16
17
18
19
20
21
22
23
24
25
26
27
28
29
30
31
32
33
34
35
36
37
38
39
40
41
42
43
44
45
46
47
48
49
50
51
52
53
54
55
56
57
58
59
60

For Peer Review Only

Table 2: Top potential hits for EPS bio markers

	Change in EPS PDE			
	2D Gel		ITRAQ	
	FP	MP	FP	MP
γ-Actin	↑			
Collagen(α1) 1	↑			
α1 antitrypsin	↓		↓	
α-2-HS-glycoprotein B			↑	↑
Serotransferrin			↑	
Complement C4B			↑	
Complement B	↑			↑
Complement I	↑			↑
Apolipoprotein A-IV	↓		↓	↓
Orosomucoid-1			↑	↑
Intelectin-1		↑		↑
Dermatopontin		↑		
RBP-4		↑		
Gelsolin				↑
Haemoglobin b				↑
Apolipoprotein A-II				↓

1
2
3
4 from 2D PAGE & iTRAQ proteomics
5
6
7
8
9
10
11

12 Frequency of occurrence in 2D gels (times of change)
13
14

15
16 6/6 patients (early./ elevated >3 yrs before EPS)
17
18 6/6 patients (early / > 3 yrs before EPS)
19
20 3/6 patients plus iTRAQ (slow reduction with time -v low at EPS)
21
22
23
24 NA. (mid/ 6 -12 months before EPS)
25
26
27 NA (early / > 12 months before EPS)
28
29
30 NA (early / > 12 months before EPS)
31
32
33 5/6 patients (early/elevated upto 6 years before EPS)
34
35 5/6 patients (early /elevated up to 6 years before EPS)
36
37
38 3/6 plus iTRAQ (late / from 12 months . -80% at EPS)
39
40
41 NA. (Early / > 1 yr before EPS)
42
43 3/3 patients & pooled (late/within 6 months of EPS)
44
45 3/3 patients (unknown)
46
47 3/3 patients (unknown)
48
49 Pooled. (Mid / elevated up to 1 year before EPS)
50
51 Pooled (late / elevated up to 12 months before EPS)
52
53
54 Pooled (late/ low for up to 12 mths before EPS)
55
56

57
58
59
60

1
2
3
4
5
6
7
8
9
10
11
12
13
14
15
16
17
18
19
20
21
22
23
24
25
26
27
28
29
30
31
32
33
34
35
36
37
38
39
40
41
42
43
44
45
46
47
48
49
50
51
52
53
54
55
56
57
58
59
60

For Peer Review Only

Table 3a: Global Fluid Study cohort - Demographic Data

	2D Gels		iTRAQ pool			
			Group 1		Group 2	
	EPS (6 patients, 33 samples)	Control (6 patients, 33 samples)	EPS (5 patients, 5 samples)	Control (6 patients, 6 samples)	EPS (5 patients, 5 samples)	Control (5 patients, 5 samples)
Age (years)	54.8 (15.4)	51.8 (16.5)	45.6 (12.4)	55.0 (14.4)	48.5 (16.3)	54.3 (11.2)
Male Gender	66.70%	66.70%	60%	17%	40%	60%
Comorbidity (Low/Medium /High)	50.0/50.0/0%	50/33.3/16.7%	60.0/40.0/0%	50.0/33.3/16.7%	60.0/40.0/0%	60.0/0/40.0%
Previous peritonitis episodes	0 (0-4)	1 (0-4)	1 (0-6)	2 (0-6)	2 (0-5)	2 (0-3)
Months From PD Start	35.2 (26.0)	33.9 (25.2)	55.1 (24.8)	72.4 (51.2)	73.3 (44.2)	42.6 (15.8)
Months Until PD End	29.5 (21.9)	30.4 (16.7)	1.8 (3.5)	1.8 (0.6)	8.9 (2.2)	8.8 (2.3)
Urine volume (mls)	663 (0-2128)	816 (0-2092)	60 (0-120)	0 (0-940)	170 (0-1322)	120 (0-1508)
Icodextrin Usage	36.40%	26.50%	40%	66.70%	20%	24%
APD usage	21.20%	30.30%	60.00%	80.00%	40%	80%
Dialysate IL-6 (pg/ml)	13.9 (0.1- 134.2)	7.0 (0.0-87.8)	75.9 (24.1- 134.2)	24.8 (10.1- 45.1)	10.7 (2.7-79.8)	12.9 (2.4-52.9)
Plasma IL-6 (pg/ml)	3.8 (0.5-54.7)	1.1 (0.2-4.0)	3.9 (0.7-11.1)	4.1 (0.6-8.8)	3.3 (0.9-9.6)	4.2 (4.1-13.9)
Serum Albumin (g/L)	33.9 (8.2)	36.9 (4.7)	30.0 (10.2)	33.4 (5.5)	35.0 (5.2)	35.8 (3.6)
D/P Cr	0.72 (0.14)	0.69 (0.12)	0.88 (0.08)	0.89 (0.15)	0.92 (0.19)	0.81 (0.14)

ed samples

Group 3		Group 4	
EPS (5 patients, 5 samples)	Control (6 patients, 6 samples)	EPS (5 patients, 6 samples)	Control (7 patients, 7 samples)
48.8 (17.0)	53.1 (18.4)	47.4 (20.8)	60.5 (19.8)
80%	83.00%	40%	71%
40.0/60.0/0%	33.3/50.0/16.7%	40.0/60.0/0%	57.1/42.9/0%
1 (0-4)	2 (0-4)	0.5 (0-2)	1 (0-4)
38.6 (29.4)	31.5 (17.6)	30.1 (24.6)	32.8 (22.4)
15.5 (8.9)	15.6 (2.0)	47.9 (11.9)	47.9 (8.6)
295 (0-1570)	604 (0-1160)	550 (0-2004)	1216 (0-1305)
60.00%	68.20%	33.30%	79.20%
40%	66.60%	0%	0.00%
14.6 (7.7- 1902.9)	42.5 (0.7- 116.1)	10.2 (4.6-45.1)	4.3 (2.9-13.8)
4.4 (0.5-31.2)	2.0 (0.6-12.6)	3.4 (0.9-10.1)	1.0 (0.0-5.4)
29.8 (10.6)	35.7 (4.7)	33.3 (9.2)	38.8 (3.9)
0.74 (0.12)	0.83 (0.08)	0.70 (0.14)	0.64 (0.09)

Table 3b: University of Patras cohort - Demographic Data

	EPS (n=3)	Controls (n=3)	New starters (n=3)
Age (years)	59 (30-64)	56 (50-80)	45 (43-60)
Male Gender	67%	33%	33%
Comorbidity (Low/Medium/High)	67/0/33%	67/33/0%	33/67/0%
Previous peritonitis episodes	1 (0-4)	0	0
Months From PD Start	108 (61-178)	85 (68-97)	<1
Urine volume (mls)	0 (0-200)	800 (500-1000)	1000 (600-1700)
Icodextrin Usage	67%	33%	0%
APD usage	33%	33%	33%
Serum Albumin (g/L)	32 (29-33)	34 (32-38)	40 (36-40)
D/P Cr	0.89 (0.74-0.91)	0.62 (0.58-0.76)	0.72 (0.67-0.73)

1
2
3
4
5
6
7
8
9
10
11
12
13
14
15
16
17
18
19
20
21
22
23
24
25
26
27
28
29
30
31
32
33
34
35
36
37
38
39
40
41
42
43
44
45
46
47
48
49
50
51
52
53
54
55
56
57
58
59
60

For Peer Review Only