



This is a repository copy of *Eplerenone attenuates pathological pulmonary vascular rather than right ventricular remodeling in pulmonary arterial hypertension*.

White Rose Research Online URL for this paper:  
<http://eprints.whiterose.ac.uk/128177/>

Version: Published Version

---

**Article:**

Boehm, M., Arnold, N., Braithwaite, A. et al. (11 more authors) (2018) Eplerenone attenuates pathological pulmonary vascular rather than right ventricular remodeling in pulmonary arterial hypertension. *BMC Pulmonary Medicine*, 18. 41.

<https://doi.org/10.1186/s12890-018-0604-x>

---

**Reuse**

This article is distributed under the terms of the Creative Commons Attribution (CC BY) licence. This licence allows you to distribute, remix, tweak, and build upon the work, even commercially, as long as you credit the authors for the original work. More information and the full terms of the licence here:  
<https://creativecommons.org/licenses/>

**Takedown**

If you consider content in White Rose Research Online to be in breach of UK law, please notify us by emailing [eprints@whiterose.ac.uk](mailto:eprints@whiterose.ac.uk) including the URL of the record and the reason for the withdrawal request.



[eprints@whiterose.ac.uk](mailto:eprints@whiterose.ac.uk)  
<https://eprints.whiterose.ac.uk/>

RESEARCH ARTICLE

Open Access



# Eplerenone attenuates pathological pulmonary vascular rather than right ventricular remodeling in pulmonary arterial hypertension

Mario Boehm<sup>1</sup>, Nadine Arnold<sup>2</sup>, Adam Braithwaite<sup>2</sup>, Josephine Pickworth<sup>2</sup>, Changwu Lu<sup>1</sup>, Tatyana Novoyatleva<sup>1</sup>, David G. Kiely<sup>3</sup>, Friedrich Grimminger<sup>1</sup>, Hossein A. Ghofrani<sup>1</sup>, Norbert Weissmann<sup>1</sup>, Werner Seeger<sup>1</sup>, Allan Lawrie<sup>2</sup>, Ralph T. Schermuly<sup>1\*</sup> and Baktybek Kojonazarov<sup>1</sup>

## Abstract

**Background:** Aldosterone is a mineralocorticoid hormone critically involved in arterial blood pressure regulation. Although pharmacological aldosterone antagonism reduces mortality and morbidity among patients with severe left-sided heart failure, the contribution of aldosterone to the pathobiology of pulmonary arterial hypertension (PAH) and right ventricular (RV) heart failure is not fully understood.

**Methods:** The effects of Eplerenone (0.1% Inspra® mixed in chow) on pulmonary vascular and RV remodeling were evaluated in mice with pulmonary hypertension (PH) caused by Sugen5416 injection with concomitant chronic hypoxia (SuHx) and in a second animal model with established RV dysfunction independent from lung remodeling through surgical pulmonary artery banding.

**Results:** Preventive Eplerenone administration attenuated the development of PH and pathological remodeling of pulmonary arterioles. Therapeutic aldosterone antagonism – starting when RV dysfunction was established – normalized mineralocorticoid receptor gene expression in the right ventricle without direct effects on either RV structure (Cardiomyocyte hypertrophy, Fibrosis) or function (assessed by non-invasive echocardiography along with intra-cardiac pressure volume measurements), but significantly lowered systemic blood pressure.

**Conclusions:** Our data indicate that aldosterone antagonism with Eplerenone attenuates pulmonary vascular rather than RV remodeling in PAH.

**Keywords:** PAH, Eplerenone, Right ventricle

## Background

Pulmonary arterial hypertension (PAH) is a devastating disorder characterized by aberrant remodeling of pulmonary arteries that results in sustained pulmonary vasoconstriction, progressively increases pulmonary vascular resistance (PVR) and right ventricular (RV) afterload [1–3]. The persistent increase in afterload maintains high shear stress on the RV myocardium and

leads to structural RV remodeling. Current interventions approved for PAH therapy consist of vasodilators that relieve the pulmonary vasoconstrictive component of the disease while the underlying pathological lung and heart remodeling progresses. Therefore, future treatment strategies need to go beyond vasodilation by targeting maladaptive remodeling processes in both, pulmonary vasculature and RV myocardium.

An accumulating body of evidence suggests that dysregulation of the Renin-Angiotensin-Aldosterone-System (RAAS) contributes to the pathogenesis of PAH [4–7]. In particular, the potential contribution of aldosterone – a mineralocorticoid hormone critically involved in

\* Correspondence: [Ralph.Schermuly@innere.med.uni-giessen.de](mailto:Ralph.Schermuly@innere.med.uni-giessen.de)

<sup>1</sup>Universities of Giessen and Marburg Lung Center (UGMLC), Excellence Cluster Cardio-Pulmonary System (ECCPS), Member of the German Center for Lung Research (DZL), Aulweg 130, 35392, Giessen, Germany  
Full list of author information is available at the end of the article

systemic blood pressure regulation – to PAH pathogenesis has recently drawn attention. Elevated levels of circulating aldosterone were found in PH patients and correlate with key cardio-pulmonary indices [8]. In line, PH rat models demonstrate increased plasma and lung tissue aldosterone concentrations that correlate with cardio-pulmonary hemodynamics as well as pulmonary vascular remodeling [8, 9] pointing towards a causative role for aldosterone signaling in mediating adverse lung remodeling as seen in PAH development. Pharmacological aldosterone antagonism by the FDA approved drugs Spironolactone or Eplerenone, respectively, directly reduced the pathologic pulmonary vascular remodeling in PAH animal models [10].

On a cellular level, it was demonstrated that aldosterone induces oxidative stress, endothelial dysfunction, inflammation and fibrosis within the pulmonary vasculature. In pulmonary artery smooth muscle cells (PASMCs), aldosterone promotes proliferation, viability and apoptosis resistance [10, 11]. In pulmonary artery endothelial cells (PAECs), aldosterone activates oxidant stress signaling pathways that decrease the bioavailability of the vasodilator nitric oxide, increases inflammation, promotes fibrosis and increases cell proliferation and migration [9, 12, 13]. In PAH, both PASMCs and PAECs are considered key cell types, whose aberrant activation is thought to drive maladaptive remodeling of the pulmonary vasculature.

Aldosterone activation is also associated with decreased diuresis which elevates blood volume and thereby blood pressure. Thus, by closely monitoring electrolytes (sodium/fluid retention and potassium/magnesium wasting), diuretics in combination with aldosterone antagonists effectively reduce blood volume, thereby cardiac load and thus decrease RV wall stress in patients with severe left heart failure [14]. Retrospectively, Spironolactone and Eplerenone therapy have shown direct beneficial effects on the RV in patients with PAH [15]. However, in an experimental rat model of RV failure independent from afterload, RAAS inhibition with Losartan (angiotensin II receptor blocker) and Eplerenone had no direct effects on either RV structure or function [16].

Eplerenone itself is a small molecule suggested to selectively compete with aldosterone for mineralocorticoid receptor binding and as compared with the nonselective mineralocorticoid receptor antagonist Spironolactone has lower affinity for progesterone and androgen receptor binding which is associated with drug-induced gynecomastia, breast pain and impotence [17]. Eplerenone is clinically FDA approved for the treatment of left-sided heart failure and systemic hypertension [18].

Taken together, clinical and experimental data suggest that increased circulating aldosterone levels contribute to the pathogenesis of PAH. To test this hypothesis, we

investigated whether pharmacological aldosterone antagonism with Eplerenone attenuates pathological remodeling of the lung and the RV in experimental mouse models. In order to differentiate afterload-dependent from direct myocardial effects, we utilized the SuHx and a pulmonary artery banding (PAB) mouse model.

## Methods

All experiments were performed according to the institutional guidelines that comply with national and international regulations (EU directive 2010/63). The local authorities for animal research approved the study protocol (Regierungspräsidium Giessen, Germany, Gi 32/2013 and The UK Home Office under PPL 40/3517).

## Animal models

Adult male C57BL/6 J mice were purchased from Charles River Laboratories (Sulzfeld, Germany and United Kingdom) and housed under controlled conditions with free access to rodent chow and tap water.

Mice were kept for three weeks under normobaric hypoxia (~ 10% O<sub>2</sub>) and were concomitantly given an injection of sugen5416 (20 mg/kg dissolved in MCC, Tocris) once per week subcutaneously. All animals were randomly assigned for either placebo (standard diet, hereafter referred to as SuHx) or Eplerenone therapy (hereafter referred to as Epl) starting on day one for additional three weeks. Effective dosing was estimated according to prior reports demonstrating efficacy of 200 mg/kg Eplerenone administration [19, 20], wherefore 50 mg Inspra® tablets were homogenized and mixed into standard rodent chow (Altromin, Lage, Germany) to receive a final concentration of 0.1% Eplerenone mixed in chow. Based on prior uptake data, this concentration was estimated to result in ~ 200 mg/kg/d Eplerenone. Control animals were kept under normobaric conditions without sugen5416 injections and were fed standard diet for the entire study period (hereafter referred to as cntrl). Maintained pressure overload was surgically induced by pulmonary artery banding (PAB) as described before [21–23]. PAB-challenged animals were randomly assigned for either placebo (hereafter referred to as PAB) or Eplerenone (0.1% mixed in chow, hereafter referred to as Epl) therapy starting one week after disease commencement for additional two weeks. Control animals underwent the identical surgical procedure without pulmonary artery clipping and were fed control diet for the entire study period (hereafter referred to as sham).

## Heart function assessment

All animals underwent non-invasive transthoracic imaging under continuous isoflurane anesthesia (1.5–2%)

to measure RV cardiac output (CO), RV internal diameter (RVID), tricuspid annular plane systolic excursion (TAPSE) and myocardial performance index (MPI) in a blinded manner as described before [24, 25]. Total pulmonary resistance index (TPRI) was calculated as RV systolic pressure divided by echocardiographically determined CI. Subsequently, intra-cardiac catheterization was performed in all animals as previously reported [21, 26]. Terminally, all mice were euthanized by exsanguination and the RVs dissected for tissue weight measurements.

### Histomorphology

Formalin fixed tissue samples were dehydrated, paraffin embedded, sectioned (5  $\mu$ m) and stained for Alcian Blue Elastic van Gieson (ABVEG), alpha smooth muscle actin ( $\alpha$ SMA) and von Willebrand factor (vWF) or picrosirius red and wheat germ agglutinin (WGA) as described before [22, 26, 27].

### Gene expression analysis

Total mRNA was extracted from frozen mouse RV tissues, subsequently transcribed into cDNA and qPCR was performed. Intron-spanning mouse-specific primers for mineralocorticoid receptor (5'-CCGAGATCGTG TATGCAGGC-3' and 5'-CGCACGAACTGAAGGCT GAT-3'), Collagen 1A1 (Col1A1; 5'-CCGGCTCCTGC TCCTCTTAG-3' and 5'-CCTCGGGTTTCCACGTC TCA-3'), Collagen 3A1 (Col3A1; 5'-CCAGGAGCCA GTGGCCATAA-3' and 5'-GGGGCACCAGGAGAAC CATT-3') and porphobilinogen deaminase (PBGD; 5'-GGGAA CCAGCTCTCTGAGGA-3' and 5'-GAATTC TGCAGCTCATCCA-3') were designed using sequence information from the NCBI database and were purchased from Metabion (Martinsried, Germany). Target gene Ct values were normalized to the housekeeping gene PBGD and expression was calculated as percentage of sham controls.

### Data analysis

All data are presented as mean  $\pm$  SD analyzed with one-way ANOVA followed by Newman-Keuls multiple comparison post-hoc test. Differences were considered statistically significant for  $p < 0.05$ .

## Results

### Eplerenone attenuates SuHx-induced PH and pulmonary vascular remodeling

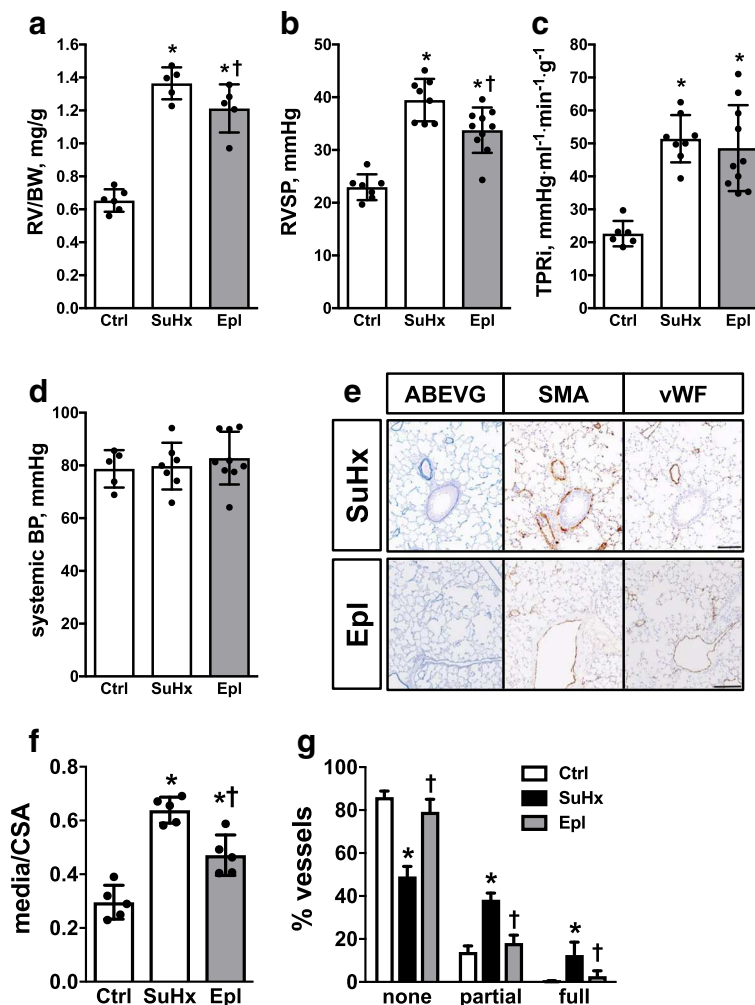
Oral Eplerenone administration (0.1% mixed in chow) for three consecutive weeks significantly attenuated the development of PH in the SuHx mouse model (Sugen-5416 injection followed by chronic hypoxia) demonstrated by reduced RV hypertrophy ( $1.2 \pm 0.1$  vs.  $1.4 \pm 0.1$ ,  $p < 0.05$ ) (RV/BW, Fig. 1a) and reduced RV systolic

pressure ( $33.8 \pm 4.3$  vs.  $39.5 \pm 4.0$  mmHg,  $p < 0.05$ ) (RVSP, Fig. 1b) as compared with controls. Total pulmonary resistance index tended to decrease upon Eplerenone administration ( $48.6 \pm 13.0$  vs.  $51.4 \pm 7.2$  mmHg·ml<sup>-1</sup>·min<sup>-1</sup>·g<sup>-1</sup>,  $p > 0.05$ ) (TPRI, Fig. 1c) without affecting systemic blood pressure ( $82.8 \pm 10.0$  vs.  $79.7 \pm 8.8$  mmHg,  $p > 0.05$ ) (systemic BP, Fig. 1d) indicating a selective direct effect on the diseased pulmonary circulation. Reduced remodeling of pulmonary arteries was demonstrated by histomorphology (Fig. 1e) and quantified as medial hypertrophy ( $0.47 \pm 0.08$  vs.  $0.64 \pm 0.05$ ,  $p < 0.05$ ) (media/cross sectional vessel area, Fig. 1f) and percentage of muscularized pulmonary arterioles (Fig. 1g).

### Eplerenone therapy reduces systemic blood pressure upon chronic RV pressure overload without direct effects on RV structure or function

Therapeutic efficacy of Eplerenone – starting after one week when animals in both PAB groups showed comparable signs of established RV dysfunction (data not shown) – normalized mineralocorticoid receptor gene expression in the RV ( $92 \pm 12\%$  vs.  $118 \pm 8\%$ ,  $p < 0.05$ ) (Fig. 2a) without affecting RV hypertrophy ( $1.3 \pm 0.4$  vs.  $1.1 \pm 0.2$ ,  $p > 0.05$ ) (RV/BW, Fig. 2b), RV systolic blood pressure ( $54.0 \pm 13.7$  vs.  $55.7 \pm 8.7$  mmHg,  $p > 0.05$ ) (RVSP, Fig. 2c) or cardiac output ( $9.8 \pm 2.2$  vs.  $10.3 \pm 1.8$  ml·min<sup>-1</sup>,  $p > 0.05$ ) (Fig. 2d) as compared with placebo controls, demonstrating no direct cardioprotective effects of Eplerenone on the RV. Importantly, systemic blood pressure dropped down ( $52.0 \pm 11.3$  vs.  $69.8 \pm 6.5$  mmHg,  $p < 0.05$ ) (Fig. 2e) indicating effective dosing and a significant systemic impact of Eplerenone on the stressed heart. Pressure-volume analysis (Fig. 2f) demonstrated unchanged contractility by RV end-systolic elastance ( $1.04 \pm 0.08$  vs.  $1.02 \pm 0.11$  mmHg· $\mu$ l<sup>-1</sup>,  $p > 0.05$ ) (Ees, Fig. 2g). In addition, echocardiography revealed no change in RV dilatation (unchanged RV internal diameter ( $2.4 \pm 0.1$  vs.  $2.1 \pm 0.3$  mm,  $p > 0.05$ ) (RVID, Fig. 2h)) and tricuspid annular plane systolic excursion ( $1.0 \pm 0.1$  vs.  $1.0 \pm 0.1$  mm,  $p > 0.05$ ) (TAPSE, Fig. 2i) upon Eplerenone therapy as compared with placebo controls.

Furthermore, chronic pressure overload-induced structural RV adaptation remained unaltered by Eplerenone therapy as total RV collagen content ( $8.6 \pm 1.4$  vs.  $8.5 \pm 0.4\%$ ,  $p > 0.05$ ) (Fig. 3a), *Col1A1* ( $147 \pm 7$  vs.  $159 \pm 14\%$ ,  $p > 0.05$ ) (Fig. 3b) and *Col3A1* ( $196 \pm 25$  vs.  $227 \pm 23\%$ ,  $p > 0.05$ ) (Fig. 3c) gene expression were not affected. Also, pharmacological aldosterone antagonism had no effect on cardiomyocyte hypertrophy ( $23.9 \pm 0.6$  vs.  $20.9 \pm 0.8$   $\mu$ m,  $p > 0.05$ ) (CM diameter, Fig. 3d) and heart failure marker gene expression ( $221 \pm 6$  vs.  $220 \pm 16\%$ ,  $p > 0.05$  for ANP, Fig. 3e and  $167 \pm 10$  vs.  $154 \pm 4\%$ ,  $p > 0.05$  for BNP, Fig. 3f).



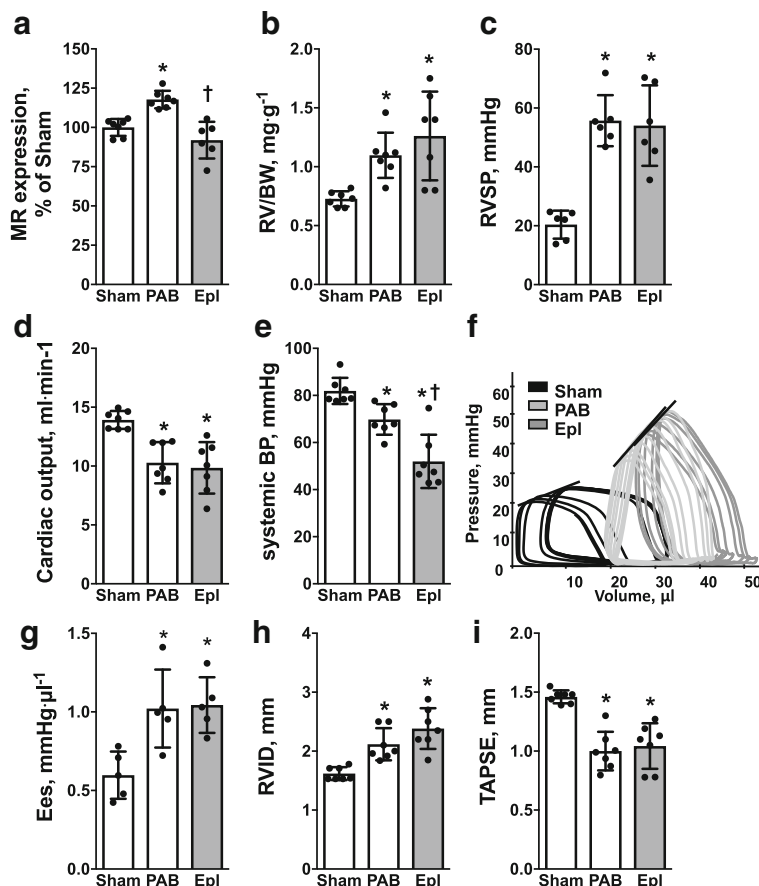
**Fig. 1** Eplerenone attenuates SuHx-induced PH and pulmonary vascular remodeling. Preventive Eplerenone administration (Inspra®, 0.1% mixed in chow) to mice attenuated the development of SuHx-induced RV hypertrophy (RV/BW, mg/g; **a**) and increased RV systolic pressure (RVSP, mmHg; **b**). Total pulmonary resistance index (TPRi, ml<sup>-1</sup>·min<sup>-1</sup>·g<sup>-1</sup>; **c**) and systemic blood pressure (systemic BP, mmHg; **d**) remained unaltered by Eplerenone administration. Representative lung sections stained for Alcian Blue Elastic van Gieson (ABEVG), smooth muscle actin (SMA) and von Willebrand factor (vWF) are shown in **e**. Medial hypertrophy is presented as ratio of media to cross sectional area [CSA] (**f**). Remodeling of pulmonary blood vessels is demonstrated by muscularization (percentage of vessels). *n* = 5–10 mice per group; \*: *p* < 0.05 vs. ctrl; †: *p* < 0.05 vs. SuHx

**Discussion**

The current study demonstrates that oral administration of an aldosterone receptor antagonist attenuates maladaptive remodeling of the pulmonary vasculature without direct effects on RV structure and function in rodent models. Eplerenone decreased SuHx-induced remodeling of small pulmonary arteries without affecting the systemic circulation. In a PAB mouse model, Eplerenone induced systemic hypotension in animals with established RV dysfunction - most likely due to cardiac unloading - while RV structure and function remained unaffected, demonstrating no direct cardioprotective effects independent from afterload. Taken together, these data suggest that aldosterone plays a pathological role in maladaptive remodeling of the pulmonary vasculature

rather than the RV. The therapeutic effect of Eplerenone on the diseased pulmonary circulation, however, remains to be characterized (including the effects of Eplerenone on PASCs and PAECs).

The development of PH in mice following vascular endothelial growth factor receptor (VEGFR) blockade and chronic hypoxia (SuHx model) was effectively attenuated by concomitant treatment with the oral available aldosterone antagonist Eplerenone (Inspra®, 0.1% mixed in standard chow) through reduced remodeling of small pulmonary arteries. Eplerenone was oral available and efficacious by decreasing RV systolic pressure and hypertrophy without affecting the systemic circulation - showing a direct effect on the pulmonary circulation. We estimated 0.1% Eplerenone mixed in chow to result in ~

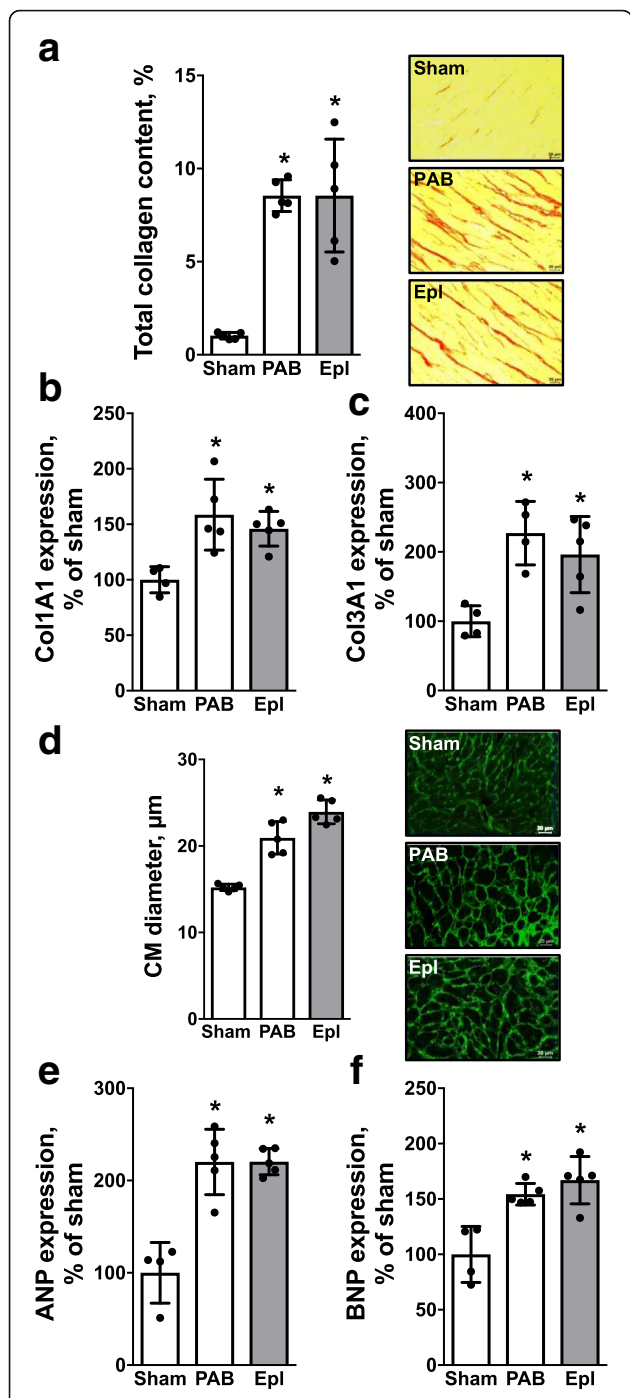


**Fig. 2** Eplerenone reduces systemic blood pressure without direct effects on RV structure and function upon PAB. Eplerenone therapy normalizes RV mineralocorticoid receptor gene expression (MR expression, percentage of sham; **a** without affecting RV hypertrophy (RV/BW, mg/g; **b** RV systolic pressure (RVSP, mmHg; **c** or cardiac output (ml·min<sup>-1</sup>, **d** while systemic blood pressure (systemic BP, mmHg; **e** dropped down significantly. Representative pressure-volume loops with lined end-systolic elastances (**f**). Quantification of end-systolic elastance (Ees, mmHg·μl<sup>-1</sup>; **g**), echocardiography-derived RV internal diameter (RVID, mm; **h**) and Tricuspid annular plane systolic excursion (TAPSE, mm; **i**) reveal no difference between PAB and Eplerenone treated mice. *n* = 5–7 mice per group; \*: *p* < 0.05 vs. ctrl; †: *p* < 0.05 vs. PAB

200 mg/kg/d effective dosing, confirmed by PH attenuation in the SuHx model, while an exact free plasma concentration for Eplerenone is not available, may vary between animals and is a clear limitation to this study. Though, a pathological role for aldosterone in maladaptive remodeling of pulmonary arteries has previously been described in PH rat models. In monocrotaline-induced PH, pharmacological aldosterone antagonism with either Spironolactone or Eplerenone decreased vascular hyperplasia and vessel thickening [10, 11]. Also, aldosterone antagonism has been shown to reduce neointimal hyperplasia in rats with SuHx-induced PH [10]. These data are consistent with the decreased pulmonary vascular remodeling observed in the current study, which show that preventive Eplerenone administration reduced vascular thickening. On a cellular level, previous studies have demonstrated that aldosterone activates an Akt/mTOR/Raptor axis that promotes pulmonary artery smooth muscle cell (PASMC)

proliferation, cell migration, viability and apoptosis resistance [10, 11]. It was shown that chronic hypoxia itself selectively induces aldosterone synthesis autonomously in pulmonary artery endothelial cells (PAECs) by upregulation of the steroidogenic acute regulator protein (StAR). Elevated aldosterone levels were linked to vasoconstriction by PAEC-derived endothelin 1 release, reactive oxidant signaling, reduced nitric oxide bioavailability and fibrosis [9, 12, 13]. In PAH, both PASMCs and PAECs are considered key cell types whose aberrant activation leads to pulmonary vascular remodeling that results in a sustainably increased RV afterload.

Therapeutic strategies for the treatment of PAH aim to halt or even reverse maladaptive lung remodeling thereby reducing RV afterload, wall stress, myocardial oxygen consumption, and ischemia to improve the contractile state of the heart. Currently, RV afterload and wall stress reduction in PAH is achieved through



**Fig. 3** Eplerenone has no direct effect on pressure overload-induced structural RV remodeling. Pharmacological aldosterone antagonism with Eplerenone had no effect on RV total collagen content assessed by picosirius red stains (percentage of the total RV; **a**), *Col1A1* (percentage of sham; **b**) and *Col3A1* gene expression (percentage of sham; **c**). Eplerenone did not affect cardiomyocyte hypertrophy (CM diameter, µm; **d**), ANP (**e**) or BNP gene expression (percentage of sham; **f**). *n* = 4–5 mice per group; \**p* < 0.05 vs. cntrl

pulmonary vasodilation [28]. Extensive work from the field of left-sided heart failure has already revealed that in addition to vasodilation, cardiac unloading through blood volume reduction via RAAS inhibition beneficially affects cardiac structure and function [14, 17]. In line, several reports link dysfunctional RAAS activation to PAH pathogenesis [4, 5, 7]. However, experimental and clinical data demonstrate that RAAS blockade has no or only minor direct beneficial effects on the RV myocardium despite systemic unloading, suggesting that the response to RAAS therapy might be critically different between the LV and the RV [16, 29, 30]. The current study extends these observations into oral administration of Eplerenone in mice with isolated RV pressure overload independent from afterload in a dosage that has proven efficacy in attenuating pathologic pulmonary vascular remodeling. Beneficial effects observed in PH animal models might be secondary due to afterload reductions. Here, Eplerenone therapy starting when RV dysfunction was established had no direct effect on the RV myocardium while systemic blood pressure dropped down. Interestingly, Eplerenone lowered the systemic blood pressure only when administered to animals with established RV dysfunction but not in the preventive SuHx model, pointing towards a differential role in the stressed RV which might be more vulnerable to aldosterone antagonism. Similar observations were made in a study addressing the effects of RAAS inhibition on the RV in a chronic pressure overload rat model [16].

A clinical role for Eplerenone has been described in cardiovascular protection, was confirmed in several clinical trials in patients with left-sided heart failure (RALES, EPHEBUS, ENPHASIS-HF) and has been extensively characterized in models of LV remodeling [14, 31, 32]. However, the molecular mechanisms are not fully understood. A growing body of evidence suggests that Eplerenone mediates its effects in part through competing with aldosterone for mineralocorticoid receptor binding – however, the mechanistic insights how Eplerenone might affect mineralocorticoid receptor expression, as it was observed in this study, are still elusive. In heart failure mouse models, genetic inactivation of the mineralocorticoid receptor signaling pathway improved LV function [33]. Specifically, cardiomyocyte but not fibroblast restricted mineralocorticoid receptor deficiency improved LV function and reduced LV dilation upon trans-aortic constriction pointing towards a key role for cardiomyocyte mineralocorticoid receptor signaling in the pathogenesis of left heart failure [34]. In line, Eplerenone therapy in wildtype animals with heart failure improved LV function and reduced LV dilation [35]. Whether elevated cardiac mineralocorticoid receptor signaling is a disease consequence or drives heart failure progression is not clear. In the current study, we

report increased mineralocorticoid receptor gene expression directly in the hypertrophied RV – suggesting increased mineralocorticoid receptor signaling - which was normalized by Eplerenone therapy without functional or structural RV improvements. These data show that increased mineralocorticoid receptor activation is rather a disease consequence than a driver of RV heart failure pathogenesis.

## Conclusions

In summary, this study reports a benefit of pharmacological aldosterone antagonism with Eplerenone in PAH by directly targeting the pulmonary vasculature while further studies are warranted to fully characterize the therapeutic benefit of Eplerenone on the diseased pulmonary vasculature and dissect the mechanistic role of aldosterone in PAH pathophysiology. The clinical relevance of aldosterone antagonism as a therapeutic approach for PAH is currently being evaluated in clinical trials. Patients are recruited for a Phase 2, dose-ranging, randomized, placebo controlled study (→→→→[ClinicalTrials.gov](#) identifier: NCT01712620) that is designed to compare the effectiveness of Spironolactone in treating PAH versus placebo. By targeting the maladaptive pulmonary vascular remodeling processes, that current PAH therapies do not, aldosterone antagonism with Spironolactone is expected to improve exercise capacity and endothelial dysfunction in PAH. To find out whether an enhanced cardiopulmonary fitness (exercise capacity and RV function) improves the quality of life, Spironolactone in combination with an endothelin receptor type A blocker will be administered to PAH patients with a LV ejection fraction > 50% in a prospective, double blind, placebo-controlled phase 4 study ([ClinicalTrials.gov](#) identifier: NCT02253394).

## Acknowledgements

We thank Christina Vroom and Elena Jenike for technical assistance.

## Funding

This work was supported by the Universities of Giessen and Marburg Lung Center (UGMLC), Excellence Cluster Cardio-Pulmonary System (ECCPS), German Center for Lung Research (DZL), Collaborative Research Center (CRC) 1213, British Heart Foundation Senior Basic Science Research Fellowship (FS/13/48/30453), British Heart Foundation Project Grant (PG/06/125/21633), National Institute for Health Research, Sheffield Clinical Research Facility.

## Availability of data and materials

The datasets used and analyzed during the current study are available from the corresponding author on reasonable request.

## Authors' contributions

MB, AL, RTS and BK designed and performed experiments, analyzed and interpreted data. MB wrote the manuscript. NA, AB, JP, CL and TN performed experiments, analyzed and interpreted data. DGK, FG, HAG, NW and WS analyzed and interpreted data. All authors were involved in critically revising the manuscript.

## Ethics approval and consent to participate

All experiments were performed according to the institutional guidelines that comply with national and international regulations (EU directive 2010/63). The local authorities for animal research approved the study protocol (Regierungspräsidium Giessen, Germany, Gi 32/2013 and The UK Home Office under PPL 40/3517).

## Consent for publication

Not applicable.

## Competing interests

The authors declare that they have no competing interests.

## Publisher's Note

Springer Nature remains neutral with regard to jurisdictional claims in published maps and institutional affiliations.

## Author details

<sup>1</sup>Universities of Giessen and Marburg Lung Center (UGMLC), Excellence Cluster Cardio-Pulmonary System (ECCPS), Member of the German Center for Lung Research (DZL), Aulweg 130, 35392, Giessen, Germany. <sup>2</sup>Department of Infection, Immunity and Cardiovascular Disease, University of Sheffield, Sheffield, UK. <sup>3</sup>Sheffield Pulmonary Vascular Disease Unit, Royal Hallamshire Hospital, Sheffield, UK.

Received: 3 July 2017 Accepted: 23 February 2018

Published online: 02 March 2018

## References

- Schermlay RT, Ghofrani HA, Wilkins MR, Grimminger F. Mechanisms of disease: pulmonary arterial hypertension. *Nat Rev Cardiol*. 2011;8(8):443–55.
- Rabinovitch M. Molecular pathogenesis of pulmonary arterial hypertension. *J Clin Invest*. 2008;118(7):2372–9.
- Leopold JA, Maron BA. Molecular mechanisms of pulmonary vascular remodeling in pulmonary arterial hypertension. *Int J Mol Sci*. 2016;17(5)
- Morrell NW, Danilov SM, Satyan KB, Morris KG, Stenmark KR. Right ventricular angiotensin converting enzyme activity and expression is increased during hypoxic pulmonary hypertension. *Cardiovasc Res*. 1997;34(2):393–403.
- de Man FS, Tu L, Handoko ML, Rain S, Ruiter G, Francois C, Schali J, Dorfmueller P, Simonneau G, Fadel E, et al. Dysregulated renin-angiotensin-aldosterone system contributes to pulmonary arterial hypertension. *Am J Respir Crit Care Med*. 2012;186(8):780–9.
- Maron BA, Leopold JA. Emerging concepts in the molecular basis of pulmonary arterial hypertension: part II: Neurohormonal signaling contributes to the pulmonary vascular and right ventricular Pathophenotype of pulmonary arterial hypertension. *Circulation*. 2015;131(23):2079–91.
- Orte C, Polak JM, Haworth SG, Yacoub MH, Morrell NW. Expression of pulmonary vascular angiotensin-converting enzyme in primary and secondary plexiform pulmonary hypertension. *J Pathol*. 2000;192(3):379–84.
- Maron BA, Opatowsky AR, Landzberg MJ, Loscalzo J, Waxman AB, Leopold JA. Plasma aldosterone levels are elevated in patients with pulmonary arterial hypertension in the absence of left ventricular heart failure: a pilot study. *Eur J Heart Fail*. 2013;15(3):277–83.
- Maron BA, Zhang YY, White K, Chan SY, Handy DE, Mahoney CE, Loscalzo J, Leopold JA. Aldosterone inactivates the endothelin-B receptor via a cysteinyl thiol redox switch to decrease pulmonary endothelial nitric oxide levels and modulate pulmonary arterial hypertension. *Circulation*. 2012;126(8):963–74.
- Aghamohammadzadeh R, Zhang YY, Stephens TE, Arons E, Zaman P, Polach KJ, Matar M, Yung LM, Yu PB, Bowman FP, et al. Up-regulation of the mammalian target of rapamycin complex 1 subunit raptor by aldosterone induces abnormal pulmonary artery smooth muscle cell survival patterns to promote pulmonary arterial hypertension. *FASEB J*. 2016;30(7):2511–27.
- Preston IR, Sagliani KD, Warburton RR, Hill NS, Fanburg BL, Jaffe IZ. Mineralocorticoid receptor antagonism attenuates experimental pulmonary hypertension. *Am J Physiol Lung Cell Mol Physiol*. 2013;304(10):L678–88.
- Leopold JA, Dam A, Maron BA, Scribner AW, Liao R, Handy DE, Stanton RC, Pitt B, Loscalzo J. Aldosterone impairs vascular reactivity by decreasing glucose-6-phosphate dehydrogenase activity. *Nat Med*. 2007;13(2):189–97.



13. Maron BA, Oldham WM, Chan SY, Vargas SO, Arons E, Zhang YY, Loscalzo J, Leopold JA. Upregulation of steroidogenic acute regulatory protein by hypoxia stimulates aldosterone synthesis in pulmonary artery endothelial cells to promote pulmonary vascular fibrosis. *Circulation*. 2014;130(2):168–79.
14. Pitt B, Zannad F, Remme WJ, Cody R, Castaigne A, Perez A, Palensky J, Wittes J. The effect of spironolactone on morbidity and mortality in patients with severe heart failure. Randomized Aldactone evaluation study investigators. *N Engl J Med*. 1999;341(10):709–17.
15. Brown NJ. Aldosterone and end-organ damage. *Curr Opin Nephrol Hypertens*. 2005;14(3):235–41.
16. Borgdorff MA, Bartelds B, Dickinson MG, Steendijk P, Berger RM. A cornerstone of heart failure treatment is not effective in experimental right ventricular failure. *Int J Cardiol*. 2013;169(3):183–9.
17. Nappi JM, Sieg A. Aldosterone and aldosterone receptor antagonists in patients with chronic heart failure. *Vasc Health Risk Manag*. 2011;7:353–63.
18. Craft J. Eplerenone (Inspra), a new aldosterone antagonist for the treatment of systemic hypertension and heart failure. *Proc (Baylor Univ Med Cent)*. 2004;17(2):217–20.
19. Keidar S, Hayek T, Kaplan M, Pavlotzky E, Hamoud S, Coleman R, Aviram M. Effect of eplerenone, a selective aldosterone blocker, on blood pressure, serum and macrophage oxidative stress, and atherosclerosis in apolipoprotein E-deficient mice. *J Cardiovasc Pharmacol*. 2003;41(6):955–63.
20. Keidar S, Kaplan M, Pavlotzky E, Coleman R, Hayek T, Hamoud S, Aviram M. Aldosterone administration to mice stimulates macrophage NADPH oxidase and increases atherosclerosis development: a possible role for angiotensin-converting enzyme and the receptors for angiotensin II and aldosterone. *Circulation*. 2004;109(18):2213–20.
21. Boehm M, Lawrie A, Wilhelm J, Ghofrani HA, Grimminger F, Weissmann N, Seeger W, Schermuly RT, Kojonazarov B. Maintained right ventricular pressure overload induces ventricular-arterial decoupling in mice. *Exp Physiol*. 2017;102(2):180–9.
22. Janssen W, Schymura Y, Novoyatleva T, Kojonazarov B, Boehm M, Wietelmann A, Luitel H, Murmann K, Krompiec DR, Tretyn A, et al. 5-HT2B receptor antagonists inhibit fibrosis and protect from RV heart failure. *Biomed Res Int*. 2015;2015:438403.
23. Shi L, Kojonazarov B, Elgheznawy A, Popp R, Dahal BK, Bohm M, Pullamsetti SS, Ghofrani HA, Godecke A, Jungmann A, et al. miR-223-IGF-IR signalling in hypoxia- and load-induced right-ventricular failure: a novel therapeutic approach. *Cardiovasc Res*. 2016;111(3):184–93.
24. Sawai R, Al-Tamari HM, Sedding D, Kojonazarov B, Muecke C, Teske R, Capecchi MR, Weissmann N, Grimminger F, Seeger W, et al. Pro-proliferative and inflammatory signaling converge on FoxO1 transcription factor in pulmonary hypertension. *Nat Med*. 2014;20(11):1289–300.
25. Budas GR, Boehm M, Kojonazarov B, Viswanathan G, Tian X, Veeraju S, Novoyatleva T, Grimminger F, Hinojosa-Kirschenbaum F, Ghofrani HA, et al. ASK1 inhibition halts disease progression in preclinical models of pulmonary arterial hypertension. *Am J Respir Crit Care Med*. 2017.
26. Hameed AG, Arnold ND, Chamberlain J, Pickworth JA, Paiva C, Dawson S, Cross S, Long L, Zhao L, Morrell NW, et al. Inhibition of tumor necrosis factor-related apoptosis-inducing ligand (TRAIL) reverses experimental pulmonary hypertension. *J Exp Med*. 2012;209(11):1919–35.
27. Lawrie A, Hameed AG, Chamberlain J, Arnold N, Kennerley A, Hopkinson K, Pickworth J, Kiely DG, Crossman DC, Francis SE. Paigen diet-fed apolipoprotein E knockout mice develop severe pulmonary hypertension in an interleukin-1-dependent manner. *Am J Pathol*. 2011;179(4):1693–705.
28. Hoeper MM, McLaughlin W, Dalaan AM, Satoh T, Galie N. Treatment of pulmonary hypertension. *Lancet Respir Med*. 2016;4(4):323–36.
29. Therrien J, Provost Y, Harrison J, Connelly M, Kaemmerer H, Webb GD. Effect of angiotensin receptor blockade on systemic right ventricular function and size: a small, randomized, placebo-controlled study. *Int J Cardiol*. 2008;129(2):187–92.
30. van der Bom T, Winter MM, Bouma BJ, Groenink M, Vliegen HW, Pieper PG, van Dijk AP, Sieswerda GT, Roos-Hesselink JW, Zwinderman AH, et al. Effect of valsartan on systemic right ventricular function: a double-blind, randomized, placebo-controlled pilot trial. *Circulation*. 2013;127(3):322–30.
31. Pitt B, Remme W, Zannad F, Neaton J, Martinez F, Roniker B, Bittman R, Hurley S, Kleiman J, Gatlin M. Eplerenone, a selective aldosterone blocker, in patients with left ventricular dysfunction after myocardial infarction. *N Engl J Med*. 2003;348(14):1309–21.
32. Zannad F, McMurray JJ, Krum H, van Veldhuisen DJ, Swedberg K, Shi H, Vincent J, Pocock SJ, Pitt B. Eplerenone in patients with systolic heart failure and mild symptoms. *N Engl J Med*. 2011;364(1):11–21.
33. Montes-Cobos E, Li X, Fischer HJ, Sasse A, Kugler S, Didie M, Toischer K, Fassnacht M, Dressel R, Reichardt HM. Inducible knock-down of the mineralocorticoid receptor in mice disturbs regulation of the renin-angiotensin-aldosterone system and attenuates heart failure induced by pressure overload. *PLoS One*. 2015;10(11):e0143954.
34. Lothar A, Berger S, Gilsbach R, Rosner S, Ecke A, Barreto F, Bauersachs J, Schutz G, Hein L. Ablation of mineralocorticoid receptors in myocytes but not in fibroblasts preserves cardiac function. *Hypertension*. 2011;57(4):746–54.
35. Kuster GM, Kotlyar E, Rude MK, Siwik DA, Liao R, Colucci WS, Sam F. Mineralocorticoid receptor inhibition ameliorates the transition to myocardial failure and decreases oxidative stress and inflammation in mice with chronic pressure overload. *Circulation*. 2005;111(4):420–7.

Submit your next manuscript to BioMed Central and we will help you at every step:

- We accept pre-submission inquiries
- Our selector tool helps you to find the most relevant journal
- We provide round the clock customer support
- Convenient online submission
- Thorough peer review
- Inclusion in PubMed and all major indexing services
- Maximum visibility for your research

Submit your manuscript at  
[www.biomedcentral.com/submit](http://www.biomedcentral.com/submit)

