

# Hierarchical formation of Westerlund 1: a collapsing cluster with no primordial mass segregation?

Mario Gennaro,<sup>1,2★</sup> Simon P. Goodwin,<sup>3</sup> Richard J. Parker,<sup>3†</sup> Richard J. Allison<sup>4</sup>  
and Wolfgang Brandner<sup>2</sup>

<sup>1</sup>*Space Telescope Science Institute, 3700 San Martin Drive, Baltimore, MD 21218, USA*

<sup>2</sup>*Max-Planck-Institut für Astronomie, Königstuhl 17, D-69117 Heidelberg, Germany*

<sup>3</sup>*Department of Physics and Astronomy, University of Sheffield, Sheffield S3 7RH, UK*

<sup>4</sup>*Zentrum für Astronomie der Universität Heidelberg, Institut für Theoretische Astrophysik, Albert-Ueberle-Str. 2, D-69120 Heidelberg, Germany*

Accepted 2017 August 11. Received 2017 August 11; in original form 2015 October 1

## ABSTRACT

We examine the level of substructure and mass segregation in the massive, young cluster Westerlund 1. We find that it is relatively smooth, with little or no mass segregation, but with the massive stars in regions of significantly higher than average surface density. While an expanding or bouncing-back scenario for the evolution of Westerlund 1 cannot be ruled out, we argue that the most natural model to explain these observations is one in which Westerlund 1 formed with no primordial mass segregation and at a similar or larger size than we now observe.

**Key words:** stars: kinematics and dynamics – open clusters and associations: individual: Westerlund 1.

## 1 INTRODUCTION

How do stars form? The answer to this apparently simple, but crucial, question is still unclear. We know stars form in dense molecular clouds, in numbers from a few up to millions of objects. Observations find that after about 10 Myr, roughly 10 per cent of these stars are in bound, potentially long-lived star clusters (Lada & Lada 2003; Lada 2010). However, it is unclear if stars predominantly form in dense clusters which are then destroyed, whether they form in low-density hierarchies in which some collapse to form clusters or a mixture of both of these mechanisms.

In the ‘clustered’ star formation scenario, most stars form in dense, bound clusters, but most of these clusters are destroyed by gas expulsion (e.g. Tutukov 1978; Lada, Margulis & Dearborn 1984; Goodwin & Bastian 2006; Baumgardt & Kroupa 2007), or by their birth environments (e.g. Kruijssen et al. 2011). In the scenario for ‘hierarchical’ star formation, stars form in complex hierarchical distributions and a small fraction are locally bound and able to collapse to form star clusters (e.g. André 2002; Peretto, André & Belloche 2006; Allison et al. 2009b; Bressert et al. 2010; Caputo, de Vries & Portegies Zwart 2014; Longmore et al. 2014).

The differences between these two possible extremes of star formation are important. In clustered star formation almost all stars spend time in dense environments which will alter their multiplicity, and can perturb discs and affect planet formation (Kroupa 1995;

Adams et al. 2004; Parker & Quanz 2012; Vincke, Breslau & Pfallner 2015). However, in hierarchical star formation, a significant fraction of stellar systems could avoid interactions and disperse almost unaltered into the field.

The density at which stars form could also influence the way in which massive stars form (e.g. Zinnecker & Yorke 2007). In clustered star formation, massive stars would almost certainly form via competitive accretion as there is not enough space between stars to form individual massive cores (e.g. Bonnell et al. 1997). On the contrary, in hierarchical star formation, massive stars would be expected to form monolithically (e.g. Krumholz, Klein & McKee 2007) as there is no massive cluster in place at their formation in which they can assemble.

The feedback from massive stars into the galactic environment is also enhanced in dense star clusters (where the most massive stars can ‘gang-up’, Lopez et al. 2011). Therefore, the impact of massive stars on larger scales could change significantly depending on their typical birth environment.

Detailed observations of young star clusters should help distinguish between formation models. In both clustered and hierarchical star formation, there should be around 10 per cent of stars in  $\sim 1$  pc clusters after around 5–10 Myr in order to fit the observations. In clustered star formation, we expect that the cluster has always been dense, and probably denser in the past as it has at some point had to expel its residual gas (Banerjee & Kroupa 2015). In hierarchical star formation, the cluster may have been less dense in the past and has collapsed down to its current state (e.g. Allison et al. 2009b).

It is possible to place constraints on the past state of a cluster/association by looking at the distributions of the most massive

\* E-mail: [gennaro@stsci.edu](mailto:gennaro@stsci.edu)

† Royal Society Dorothy Hodgkin Fellow.

stars (mass segregation and relative local densities) in tandem with the degree of structure in the cluster (Parker 2014; Parker et al. 2014; Wright et al. 2014).

In this paper, we examine the distributions of massive stars and the structure of the massive cluster Westerlund 1 (Wd 1, Westerlund 1961). Wd 1 is an  $\sim 5$  Myr old,  $\sim 2$  pc across (half-mass radius of  $\sim 1$  pc, see Brandner et al. 2008), and  $\sim 5 \times 10^4 M_{\odot}$  cluster making it the most massive young cluster in the Galaxy (Clark et al. 2005; Andersen et al. 2017).

The paper is organized as follows. In Sections 2–5, we describe the data, catalogue selection, stellar models and determination of individual stellar masses. In Section 6, we present a structural analysis of Westerlund 1. In Section 7 we provide a discussion, and we conclude in Section 8.

## 2 THE DATA

The data set used in the present analysis has been extensively described in Brandner et al. (2008, hereafter B08) and used also in Gennaro et al. (2011, hereafter G11). We refer the reader to these two papers for a full description of the data reduction and analysis process. In the following, we briefly summarize the reduction steps and mainly emphasize the differences in the analysis which have been introduced in this work with respect to the previous two papers.

ESO NTT/SofI  $J$ ,  $H$  and  $K_S$  broad-band observations of Wd 1 (RA<sub>J2000</sub> = 16<sup>h</sup>47<sup>m</sup>03<sup>s</sup>, Dec<sub>J2000</sub> =  $-45^{\circ}50'37''$ ) and of a nearby comparison field (offset by  $\approx 7$  arcmin to the east and  $\approx 13$  arcmin to the south of Wd 1), each covering an area of 4.5 arcmin  $\times$  4.5 arcmin, were retrieved from the ESO archive (PI: J.Alves). The reduction process is the same as in B08, performed using the eclipse jitter routines (Devillard 2001). Point spread function (PSF) fitting photometry was derived using the IRAF implementation of DAOPHOT (Stetson 1987).

The catalogue of stellar objects was obtained by positional matching of the lists of  $J$ ,  $H$  and  $K_S$  detections. The total number of stars is 6201 for the Wd 1 field and 4874 for the comparison field. As in B08 and G11, we did not use the  $H$ -band measurements in the analysis. The reason is that the largest colour baseline is attained in the  $J - K_S$  colour. Using this colour, the cluster sequence in the colour-magnitude diagram (CMD) appears to be better separated from the fore- and background contamination, thus providing the most useful information for photometric member selection. Also, the larger colour baseline provides more reliable estimates for the reddening value, giving better constraints on the average extinction towards the cluster and therefore on the stellar masses, which we infer from comparison of photometry and isochrones (see Section 5).

There are some small differences in the photometric calibration process compared to B08 and G11 though. Photometric zero-points and colour terms were computed by comparison of instrumental magnitudes of relatively isolated, bright sources with counterparts in the 2MASS Point Source Catalogue (2MASS-PSC, Skrutskie et al. 2006), similar to B08. However, we have refined the selection process for the 2MASS reference stars and improved the fitting procedure for the magnitude comparison. The results are very similar to B08, with an average difference in zero-points of a few hundredths of magnitudes (the random uncertainty on the zero-point being of the order of 1.5 thousandth magnitudes). The change in the calibration's colour term is similarly very small and, when limiting the comparison to the main sequence (MS) stars of Wd 1, the  $J - K$  colour with the current calibration is redder by only 0.005 mag compared to B08 and G11.

We make our full photometric catalogue available; the catalogue contains all the SofI detections with magnitudes calibrated in the 2MASS system. The stars that survive the selection process (see Section 3) and that are actually used in this work are marked by additional flags. We also provide the photometric mass determinations and additional information extracted from the 2MASS-PSC (Bonanos 2007; Negueruela, Clark & Ritchie 2010). An example of the information available in the catalogue is provided in Table 1, the full version is available online.

### 2.1 Saturated stars

The brightest stars that are present in Wd 1 can easily saturate the SofI detector. In the following, we will use the term saturated to indicate both (a) stars with fluxes implying counts above the detector's full-well capacity and (b) stars that are bright enough to enter the non-linear response regime of the detector even without literally saturating it. The adopted SofI observations have a non-linear regime limit corresponding to  $\sim 9.1$  mag in the  $K_S$  band (see B08).

DAOPHOT cannot directly deal with saturated stars, therefore their magnitudes cannot be estimated with the same techniques adopted for the non-saturated ones. For B08 and G11, saturation of the brightest stars was not a problem. Since in those papers, the authors were dealing with the intermediate- and low-mass content of Wd 1, well below the saturation limit, they could choose to neglect the very bright members. However, in order to properly quantify the degree of mass segregation of Wd 1 throughout the largest possible mass spectrum, it is crucial to include the brightest and most massive objects in the present analysis. This has been accomplished by expanding the catalogue of sources with near-infrared magnitude measurements in two ways:

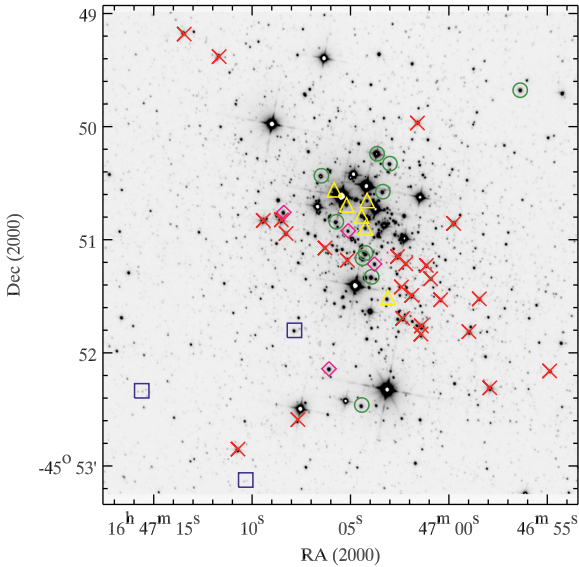
(i) 2MASS-PSC stars: first, the stars from the 2MASS-PSC were included in our source list. The 2MASS-PSC catalogue for the same area was positionally matched with the SofI catalogue, after excluding the saturated sources from the latter. For the stars in common, we adopted the magnitudes obtained from the SofI images, given the better spatial resolution. We removed from the 2MASS-PSC all the sources for which a '0' read flag was present in any of the  $JHK_S$  bands. A total of 35 sources was added to the catalogue in this way. After applying the photometric selection of Section 3, the number of 2MASS-PSC sources considered as members is reduced to 28. Of these, 25 are brighter than the SofI saturation limit of  $K_S = 9.1$  mag, corresponding to masses larger than  $\sim 30 M_{\odot}$ . The remaining three stars are considered as point sources in the 2MASS-PSC. However, from visual inspection, we determined that these 2MASS detections correspond to small SofI 'aggregates' of three or four detections. This is a result of the poorer 2MASS angular resolution of  $\sim 2$  arcsec in the Galactic plane, compared to a typical full width at half-maximum of our SofI images of about 0.75 arcsec. Because of this ambiguity in the identification, our matching algorithm is not able to assign these three 2MASS detections to any of their nearby SofI detections. Therefore, they are considered as 'isolated' 2MASS objects without SofI counterparts. Given their small number, given that they span a large range of magnitudes (and therefore masses) and also given that for increasing magnitude the number of SofI detections of similar magnitude rapidly increases, these possibly spuriously isolated 2MASS sources do not affect the outcome of our analysis, and therefore they were left in our catalogue.

(ii) Repaired-PSF stars: a second group of objects was added to our original SofI catalogue. These are stars that have entered the non-linear regime of the SofI camera in either the  $J$ ,  $H$  or  $K_S$

**Table 1.** Selected rows and columns from the full photometric catalogue (available online). The online catalogue additionally contains for each star (when available): (1) a flag indicating whether it has been kept in the analysis after  $3\sigma$  clipping, (2) a flag indicating whether it has been removed from the catalogue using statistical field subtraction, (3) its membership probability, (4) photometric errors and (5) optical photometry<sup>a,b</sup>.

RA [deg]	Dec [deg]	Source –	$M_{\text{NIR}}$ [ $M_{\odot}$ ]	$M_{\text{OPT}}$ [ $M_{\odot}$ ]	$J_{\text{SofI}}$ [mag]	$K_{\text{SofI}}$ [mag]	$J_{2\text{M}}$ [mag]	$K_{2\text{M}}$ [mag]	$ID_{\text{N}}^a$ –	Sp. type <sub>N</sub> <sup>a</sup> –	$ID_{\text{B}}^b$ –	Sp. type <sub>B</sub> <sup>b</sup> –
251.734 07	−45.867 23	SofI	5.4	–	15.51	14.17	15.57	13.70	–	–	–	–
251.768 29	−45.874 32	PSF-rep	37.5	37.4	9.84	8.47	–	–	W238	B1Iab	238	O9.5Ia–B0.5Ia
251.762 28	−45.838 76	PSF-rep	38.0	37.0	9.58	8.44	–	–	W5	B0.5Ia+	5,WR77f(S)	WN10–11h/B0–1Ia+
251.758 96	−45.853 53	2MASS	35.7	31.3	–	–	10.30	8.60	W24	O9Iab	–	–
251.768 29	−45.846 44	Neg	–	35.5	–	–	–	–	W34	B0Ia	–	–
251.784 79	−45.845 92	Bon	–	26.1	–	–	–	–	–	–	72,WR77sc(A)	WN7b,X

Notes. <sup>a</sup>From Negueruela et al. (2010); <sup>b</sup>From Bonanos (2007).



**Figure 1.** SOFI  $K_S$  band image of Wd 1. Superimposed are the position of 2MASS sources with  $K_S \leq 9.1$  (red crosses), the other isolated 2MASS sources with  $K_S > 9.1$  mag (blue squares) and sources for which magnitudes were derived by PSF reconstruction (green circles). These are the only sources which survive the  $3\sigma$  clipping procedure in the near-infrared CMD described in Section 3. The position of the stars without near-infrared magnitude measurements but with optical magnitudes are displayed as magenta diamonds (stars from Bonanos 2007) and yellow triangles (stars from Negueruela et al. 2010).

band, but for which photometry from the SofI images could still be attempted using the unsaturated wings of their light profiles. In order to do so, we used our own adaptation of the `STARFINDER` code (Diolaiti et al. 2000), obtaining photometry in all three  $J$ ,  $H$  or  $K_S$  bands for 50 additional stars. Magnitude zero-points for the repaired stars were obtained by matching their catalogue with the 2MASS-PSC catalogue. The total number of repaired stars also found in the 2MASS-PSC is 23. For these matched stars, we adopted 2MASS-PSC magnitudes. The photometric error of the 2MASS-PSC for bright sources is indeed smaller than the precision that can be achieved by using only the PSF wings. The remaining 27 stars were added to our final catalogue of detections. From the latter, only 10 are kept in the list of Wd 1 members, after our photometric selection described in Section 3. The remaining 17 display near-infrared colours which indicate that they are fore- or background stars. All the objects which were added to our original SofI catalogue are displayed in Fig. 1, overplotted on the SofI  $K_S$  band image. The repaired-PSF stars are green circles. The 2MASS-PSC sources are

in turn divided into two groups:  $K_S \leq 9.1$  mag (red crosses) and  $K_S > 9.1$  mag (blue squares).

## 2.2 Stars without near-infrared photometry

In order to make our catalogue as complete as possible, we matched the list of all the stars detected in the near-infrared with the catalogues of Bonanos (2007) and Negueruela et al. (2010). The first study identifies massive stars in the Wd 1 field through photometric variability in optical bands. The second is the most complete up-to-date spectroscopic study of massive stars in Wd 1. We will refer to the stars in these catalogues as ‘optical’ sources in contrast to the near-infrared ones. Given the way these two catalogues are built, we consider all their stars as members of Wd 1; therefore, no additional selection was imposed to the lists of optical detections. We matched the catalogues of optical sources with the full list of near-infrared ones, obtaining an overlap of 63 stars in total within the SofI field of view. Among the whole set of optical sources, 10 do not have a measurement of their near-infrared magnitudes, 4 from Bonanos (2007) and 6 from Negueruela et al. (2010). These stars are marked in Fig. 1.

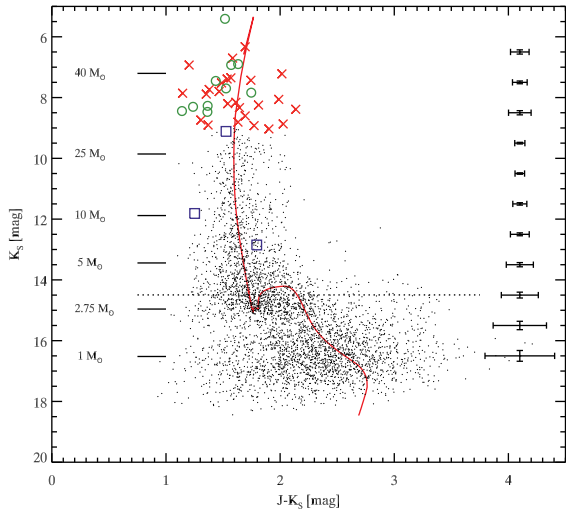
## 3 CATALOGUE SELECTION

We adopted the same statistical membership selection scheme of G11, which is based on measuring the density of stars in the  $J$  versus  $K_S$  magnitude–magnitude space. The density in one point is computed by summing up the contributions of all stars. These contributions are computed as Gaussians centred on the individual measurements, with corresponding covariance matrices (a case of variable, 2D, kernel density estimation). The densities for the science frame and the comparison field are computed separately and the contrast between the two is used as a measure of membership probability.

Once that the membership probability is computed, the catalogue selection is done as follows: for each star a uniform random number between 0 and 1 is drawn and compared with the membership probability of that star. If the former is larger than the latter, the star is rejected. This way slightly different catalogues are obtained for different drawings. However, the whole Wd 1 MS is easily distinguishable from the fore- and background contaminants and most of the stars with  $M \gtrsim 3 M_{\odot}$  have large membership probabilities. Therefore, the different catalogues are very similar in this mass regime and variations are observed only below  $M \sim 3 M_{\odot}$ . We have nevertheless verified that there are no significant variations of our results from one random realization of the catalogue to the other, therefore, from now on we will limit our analysis to only one particular realization. Furthermore, in our analysis, we limit

**Table 2.** Number of sources from each catalogue.

Original catalogue	Total detections	After clipping	After subtraction
SofI	5994	4638	3949
Repaired-PSF	42	28	28
2MASS	27	10	10
Bonanos 2007	8	4	4
Neguieruela et al. 2010	9	6	6
Total	6080	4686	3997



**Figure 2.** CMD for the stars detected in the near-infrared after statistical field subtraction and  $3\sigma$  clipping: SofI detections (black dots), 2MASS sources brighter than  $K_S = 9.1$  (red crosses), the other isolated 2MASS sources with  $K_S \in [10.4, 14.2]$  mag (blue squares) and sources for which magnitudes were derived by PSF reconstruction through wings fitting (green circles). The red solid line is the 4 Myr isochrone described in Section 4. Some mass values are indicated for reference. The dotted line indicates the magnitude limit corresponding to 50 per cent completeness, equivalent to the MS mass limit of  $3.5 M_\odot$  adopted for mass segregation estimates.

ourselves to stars more massive than  $3.5 M_\odot$ , because this is the mass at which the average completeness for the SofI observations drops to 50 per cent (G11).

In addition to the probabilistic subtraction, we apply a  $3\sigma$  clipping to the catalogue to exclude all the stars whose photometry is inconsistent with the adopted isochrone of Section 4 which traces the bulk of Wd 1 population (see again G11). The number of objects from each source catalogue before and after the clipping and statistical subtraction steps are summarized in Table 2; the CMD for the 3997 selected members is shown in Fig. 2.

#### 4 STELLAR MODELS

For the determination of stellar masses, we compared our photometry with stellar models. The adopted isochrone is the 4 Myr, solar composition isochrone described in G11. It is a match of an isochrone from Marigo et al. (2008), well suited for describing the MS of Wd 1 and an isochrone from Degl’Innocenti et al. (2008), better suited for the stars that are still in the pre-main-sequence (PMS) phase. The match between the two isochrones is done at  $4 M_\odot$ . According to these models, an  $\sim 2.75 M_\odot$  star is just on the zero-age MS position, with more massive stars in the MS and less massive still in the PMS. The turn-off mass, i.e. the mass for which

central hydrogen exhaustion occurs, is approximately  $40 M_\odot$ . After hydrogen exhaustion stars rapidly expand and strongly increase their luminosity during their short lived post-MS phase.

The age and distance adopted are the same as in G11, i.e.  $t = 4$  Myr and  $DM = 13.0$  mag, corresponding to 4.0 kpc. The reddening value was derived by fitting the vertical upper-MS part of the isochrone to the stars in the magnitude interval  $K_S \in [9.1, 13.5]$  and colour  $J - K_S \in [1.2, 2.0]$ . We obtained the reddening value by minimizing the quantity:

$$\sum_j |(J - K_S)_j - (J - K_S)_{\text{isoc}}|$$

where  $j$  runs over the selected stars and the isochrone colour is taken at the same  $K_S$  of the  $j$ th star. Once the  $J - K_S$  reddening has been estimated, extinction  $A_{K_S}$  is computed using the extinction law by Nishiyama et al. (2006). Given the slightly different photometric calibration, the derived value of  $A_{K_S}$  changes from 0.907 mag of G11 to 0.913 mag in this work, a negligible difference.

#### 5 INDIVIDUAL MASSES

The stellar mass for the objects with near-infrared photometry was determined with a maximum-likelihood method, by comparing the measured magnitudes with the isochrone of Section 4. For the  $i$ th star, we assumed Gaussian photometric errors and computed the probability of the photometric data, given the mass (i.e. the likelihood):

$$p(\mathbf{d}_i | m) = \frac{1}{2\pi |\boldsymbol{\Sigma}_i|^{1/2}} \times \exp \left\{ -\frac{1}{2} [\mathbf{M}(m) - \mathbf{d}_i]^T \boldsymbol{\Sigma}_i^{-1} [\mathbf{M}(m) - \mathbf{d}_i] \right\}; \quad (1)$$

where  $\mathbf{d}_i = (J_i, K_{S_i})$ , with  $\boldsymbol{\Sigma}_i$  being the covariance matrix for the individual star (magnitude errors and their covariance) and  $|\boldsymbol{\Sigma}_i|$  its determinant. The matrix is derived as described in appendix B of G11.  $\mathbf{M}(m) = (J(m), K_S(m))$  are the values of the magnitudes predicted by our chosen model, for stellar mass  $m$ .

The probability distribution function (pdf) of the mass given, the data,  $p(m|d)$ , is proportional to the product of  $p(d|m)$  and  $p(m)$ , the latter being the probability of the model (prior). In G11 the authors found that, for the range of masses of interest here, the width of the likelihood (as a function of mass) for individual stars was of a few per cent of the peak mass or less. Given that, for simplicity, we adopt here a flat prior for  $m$  throughout the observed mass range; therefore, the mass pdf is proportional (though with different units) to the likelihood. We use the mode of the likelihood as our mass estimate for the individual stars.

The sorted list of stellar masses is what really matters for our analysis, while the exact mass values are not of fundamental importance. We do not expect any systematic uncertainty in our results to arise from the choice of the prior.

From Fig. 2, it is possible to see that the 50 per cent completeness magnitude (dotted line), which we adopt as a cut-off for our analysis, corresponds to a region where the isochrone assumes the same magnitude values multiple times. This degeneracy corresponds to the PMS to MS transition, where the lower mass PMS stars which are about to enter the zero-age MS are actually brighter than slightly more massive stars already in MS. The likelihood function for stars observed in this region can thus show multiple peaks and so the mode, which we adopt as a mass estimator, will correspond to point



of the isochrone which is closer to the measured magnitudes (see Gennaro, Prada Moroni & Tognelli 2012, for a detailed description). Nevertheless, this mass ambiguity affects only the lowest mass stars and it is not important for our general analysis and conclusions, which are mostly focused on the behaviour of the massive stars.

### 5.1 Mass of the optical sources

For the 10 sources without near-infrared detections described in Section 2.2, we estimated the mass in a similar way as for the ones with near-infrared detections, but using  $R$  and  $I$  magnitudes. Since these stars are all upper-MS objects, it was sufficient to use the 4 Myr MS isochrone by Marigo et al. (2008), provided in the appropriate photometric filter system. Given the  $A_{K_S} = 0.913$  mag, estimated from the near-infrared observations, we calculated the corresponding  $A_R$  and  $A_I$  values by adopting  $A_J/A_{K_S} = 3.02$  value from the Nishiyama et al. (2006) reddening law, which is determined only down to  $J$  band and extended it to shorter wavelengths using the  $A_R/A_J = 2.66$  and  $A_I/A_J = 1.70$  by Cardelli et al. (1989).

## 6 STRUCTURE AND MASS SEGREGATION IN Wd 1

We quantify the structure and mass segregation in Wd 1 in three ways: using the  $Q$ -parameter (Cartwright & Whitworth 2004), the mass segregation ratio  $\Lambda_{\text{MSR}}$  (Allison et al. 2009a) and the local surface density ratio for massive stars  $\Sigma_{\text{LDR}}$  (Maschberger & Clarke 2011; Parker et al. 2014). We will quickly summarize these methods below, but we direct the reader to Parker et al. (2014) and Parker & Goodwin (2015) for a detailed discussion of these methods, their pros and cons, and variations on them.

The  $Q$ -parameter takes the ratio of the average minimum spanning tree (MST) path length,  $\bar{m}$ , to the average distance between stars,  $\bar{s}$ , to quantify the level of substructure:

$$Q = \frac{\bar{m}}{\bar{s}}. \quad (2)$$

If  $Q < 0.7$  there is significant ‘clumpiness’, if  $Q > 0.9$  the structure is smooth with increasing central concentration with increasing values of  $Q$ . (Essentially, clumpy regions will contain many more short connections.)

The  $\Lambda_{\text{MSR}}$  mass segregation ratio compares the MST length connecting the  $N_{\text{MST}}$  most massive stars (or any subset of stars),  $l_{\text{subset}}$ , with the average MST length of large ensembles of sets of  $N_{\text{MST}}$  random stars,  $\langle l_{\text{average}} \rangle$ . There is a dispersion associated with the average length of random MSTs, which is roughly Gaussian and can be quantified as the standard deviation of the lengths  $\langle l_{\text{average}} \rangle \pm \sigma_{\text{average}}$ . However, we conservatively estimate the lower (upper) uncertainty as the MST length which lies 1/6 (5/6) of the way through an ordered list of all the random lengths (corresponding to a 66 per cent deviation from the median value,  $\langle l_{\text{average}} \rangle$ ). This determination prevents a single outlying object from heavily influencing the uncertainty.  $\Lambda_{\text{MSR}}$  is thus given by

$$\Lambda_{\text{MSR}} = \frac{\langle l_{\text{average}} \rangle^{+5/6} / l_{\text{subset}}}{l_{\text{subset}}^{-\sigma_{1/6}} / l_{\text{subset}}}, \quad (3)$$

and quantifies the extent to which the MST length of the most massive stars is likely to be randomly sampled. In this work, we utilize 100 random ensembles to estimate the uncertainty on  $\Lambda_{\text{MSR}}$ . If  $\Lambda_{\text{MSR}} > 1$ , the most massive stars are concentrated (mass segregated), if  $\Lambda_{\text{MSR}} < 1$  the massive stars are more widely dispersed than expected at random.

Maschberger & Clarke (2011) quantified the relative spatial distribution of massive stars compared to the cluster average using the  $\Sigma - m$  plot, which plots the local surface density,  $\Sigma$  around each star as a function of its mass,  $m$ .  $\Sigma$  is given by

$$\Sigma = \frac{N - 1}{\pi r_N^2}, \quad (4)$$

where  $r_N$  is the distance to the  $N$ th nearest neighbouring star (we adopt  $N = 10$  throughout this work). The median density of the chosen subset of stars is then compared to the median density for the entire distribution (Küpper et al. 2011; Parker et al. 2014) to obtain the local surface density ratio,  $\Sigma_{\text{LDR}}$ :

$$\Sigma_{\text{LDR}} = \frac{\bar{\Sigma}_{\text{subset}}}{\bar{\Sigma}_{\text{all}}} \quad (5)$$

The significance of this measure of the local density of a subset of stars compared to the cluster is defined by a Kolmogorov–Smirnov (KS) test between the  $\Sigma$  values of the subset against the  $\Sigma$  values of the rest.

The  $\Sigma_{\text{LDR}}$  measure compares the local surface densities of the most massive stars with the average local surface density and examines the probability that the most massive stars are in regions of higher surface density than would be expected at random.

Note that  $\Lambda_{\text{MSR}}$  and  $\Sigma_{\text{LDR}}$  will both find ‘mass segregation’ when the most massive stars are at the centre of a single cluster. However, they measure different types of ‘mass segregation’: the relative positions of the massive stars for  $\Lambda_{\text{MSR}}$  and the local surface densities for  $\Sigma_{\text{LDR}}$ , and so it is quite possible to have a ‘signal’ in one but not the other method (see Parker & Goodwin 2015).

Both methods rely on the determination of individual stellar masses for all cluster members. In a future paper, we will study the full effects of observational uncertainties on  $\Lambda_{\text{MSR}}$  and  $\Sigma_{\text{LDR}}$ ; however, we note from our previous work that uncertainties on individual stellar masses of up to 30 per cent would not alter a strong signature of mass segregation (Parker et al. 2011).

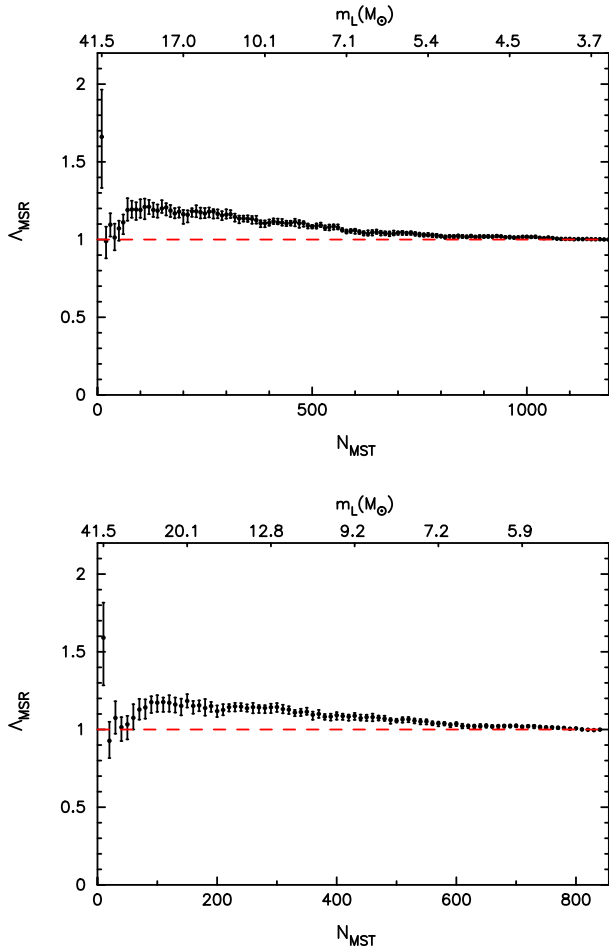
We examine two samples from the data, one in which we assume completeness above  $5 M_{\odot}$ , and one above  $3.5 M_{\odot}$ . We find little difference between these two samples.

### 6.1 Substructure in Wd 1

We calculate  $Q$  for our two samples, and find  $Q = 0.90$  for all stars above  $5 M_{\odot}$ , and  $Q = 0.87$  for all stars above  $3.5 M_{\odot}$ . These  $Q$ -values are those of a fairly smooth, somewhat centrally concentrated cluster which matches what the eye sees in Fig. 1. (Note that elongation can bias  $Q$  somewhat to lower values than would be expected; Bastian et al. 2009.)

A value of  $Q \sim 0.9$  for Wd 1 is interesting. There is no evidence for any significant substructure or subclustering (which would give  $Q < 0.7$ ). But there is also no evidence for a significant central concentration. A  $Q \sim 0.9$  would suggest a density distribution with a power law of  $r^{-2}$  (possibly slightly shallower; Cartwright & Whitworth 2004).

It is unclear what biases there could be in the determination of  $Q$ . If significant numbers of low-mass stars are missed in the central regions, then  $Q$  would be lowered (this would also lower both  $\Lambda_{\text{MSR}}$  and  $\Sigma_{\text{LDR}}$ , see Parker, Maschberger & Alves de Oliveira 2012). Missing low-mass stars near high-mass stars would probably lower  $Q$  somewhat as well by producing artificial ‘holes’ around massive stars (this would artificially increase  $\Lambda_{\text{MSR}}$  and lower  $\Sigma_{\text{LDR}}$ ). Therefore, we suggest that the measured  $Q \sim 0.9$  is probably a lower limit on the true  $Q$ .



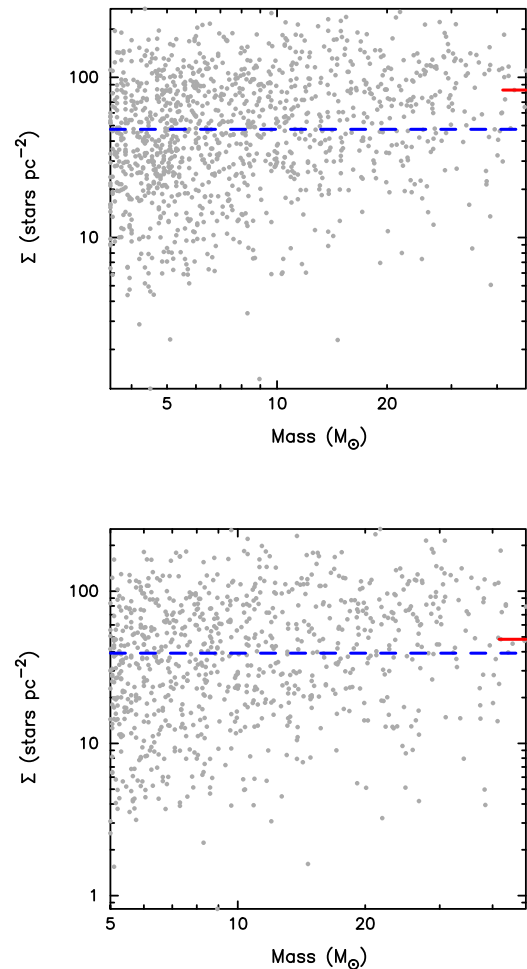
**Figure 3.** The evolution of  $\Lambda_{\text{MSR}}$  for increasing values of  $N_{\text{MST}}$ . The red dashed line indicates  $\Lambda_{\text{MSR}} = 1$ , i.e. no mass segregation. The top axis indicates the minimum stellar mass within the  $N_{\text{MST}}$  subset of the most massive stars. The two panels show computations considering all the stars with  $M > 3.5 M_{\odot}$  (top) and all the stars with  $M > 5 M_{\odot}$  (bottom).

## 6.2 Mass segregation in Wd 1

In Fig. 3, we show  $\Lambda_{\text{MSR}}$  as a function of  $N_{\text{MST}}$  for the  $>5 M_{\odot}$  and  $>3.5 M_{\odot}$  samples. The values for  $\Lambda_{\text{MSR}}$  are very similar for both mass cuts.  $\Lambda_{\text{MSR}} = 1.6^{+0.2}_{-0.3}$  for the 10 most massive stars ( $>40 M_{\odot}$ ) but is consistent with unity for lower masses.

This is, at best, marginal evidence for mass segregation, and then only in the most massive stars. Likewise, the dip in  $\Lambda_{\text{MSR}}$  which appears below  $41.5 M_{\odot}$  cannot be considered as a significant feature. Parker & Goodwin (2015) show that any value of  $\Lambda_{\text{MSR}}$  below 2 should be treated with caution, especially for low values of the  $N_{\text{MST}}$  stars used to construct it. In particular, they show that a random distribution of points can sometimes give an apparent signature of mass segregation. If a region is truly mass segregated (e.g. the Orion nebula Cluster; Allison et al. 2009a),  $\Lambda_{\text{MSR}}$  takes values very much larger than 2.

Any biases in the observations will almost certainly increase the apparent significance of any mass segregation as they will involve missing low-mass stars near high-mass stars and hence artificially increasing the length of random MSTs (see Ascenso, Alves & Lago 2009). Therefore, this value of  $\Lambda_{\text{MSR}}$  should be taken as an upper limit on the true value.



**Figure 4.** The stellar surface density,  $\Sigma$ , as a function of stellar mass. The blue dashed line indicates the median surface density for the full sample, and the solid red line indicates the median surface density for the most massive stars. The top panel shows all stars with  $M > 3.5 M_{\odot}$ , the bottom all stars with  $M > 5 M_{\odot}$ .

## 6.3 Local surface densities of massive stars in Wd 1

In Fig. 4, we show the plots of surface density as a function of stellar mass to determine  $\Sigma_{\text{LDR}}$  for both the  $>5 M_{\odot}$  and  $>3.5 M_{\odot}$  samples. The panels show the surface densities for all stars for the  $>3.5 M_{\odot}$  sample (top panel) and the  $>5 M_{\odot}$  sample (bottom panel). In both panels, the mean surface density is shown by the blue, dashed line and the mean of the surface densities for the 10 most massive stars by the red line.

In both cases, we find that the local surface density around the most massive stars is higher than that around low-mass stars. In the  $>5 M_{\odot}$  sample, the difference is a factor of 1.23 which has a KS test  $p$ -value of 0.06; in the  $>3.5 M_{\odot}$  sample the difference is a factor of 1.76 with a  $p$ -value of 0.04.

The raw values of  $\Sigma_{\text{LDR}}$  are different in the two samples because the total number of stars in each sample is different which results in a higher average surface density in the  $>3.5 M_{\odot}$  sample (top panel) so the raw values should be treated with some caution.

However, both samples show that the most massive stars in Wd 1 are located in regions of significantly higher-than-average surface density.

For  $\Sigma_{\text{LDR}}$ , the effect of incompleteness near massive stars would be to reduce a signal (i.e. missing low-mass stars near massive stars would artificially lower their local surface density). Therefore, we conclude that the massive stars in Wd 1 are almost certainly found in regions of higher-than-average surface density.

#### 6.4 Comparison with previous work

It should be noted that the result of little or no mass segregation in Wd 1 (and if any, only above  $40 M_{\odot}$ ) contradicts that of G11. The difference is due to the method used in G11 in fitting IMF slopes in different areas which involves two sets of somewhat arbitrary ‘binning’ (see their section 8.3). We suggest that the problems with binning and fitting slopes (especially at the high-mass end where there are few stars) resulted in an overestimate of the degree of mass segregation.

Parker & Goodwin (2015) discuss the problems of determining mass segregation. They conclude that  $\Lambda_{\text{MSR}}$  is the most reliable method of determining ‘classical’ mass segregation. In particular, it does not involve determining an IMF slope with all of its associated problems, rather it simply tests the hypothesis that the most massive stars are compatible with being a random subset of all stars. As discussed above, *all* methods are biased by possible biases in the data such as missing low-mass stars near high-mass stars. However,  $\Lambda_{\text{MSR}}$  is biased in such a way that it is an upper limit on the true  $\Lambda_{\text{MSR}}$ , whilst IMF fitting would be biased such that it would find a flatter slope and hence ‘find’ mass segregation.

#### 6.5 Summary of observational results

The spatial analysis of Wd 1 can be summarized as follows.

Wd 1 shows little evidence of substructure with a  $Q$ -value of  $\sim 0.9$  which is slightly centrally concentrated (a density profile of roughly  $\sim r^{-2}$ ).

Wd 1 shows only marginal evidence for stars  $> 40 M_{\odot}$  being a factor of  $\sim 1.5$  times more concentrated than random, and no evidence of any other stars being mass segregated at all.

Wd 1 shows good evidence (KS test  $p$ -values of  $\sim 0.05$ ) of the most massive stars being in regions of higher local surface density than other stars.

The most probable bias would be to miss low-mass stars near high-mass stars. The result of such a bias would be that the measured value of  $Q$  is a lower limit, of  $\Lambda_{\text{MSR}}$  an upper limit, and of  $\Sigma_{\text{LDR}}$  a lower limit.

## 7 DISCUSSION

The results of our analysis of the structure of Wd 1 and the relative distributions of its high- and low-mass stars enable us to speculate on the initial conditions and evolution of Wd 1.

Parker et al. (2014) examine the evolution of  $Q$ ,  $\Lambda_{\text{MSR}}$  and  $\Sigma_{\text{LDR}}$  in a selection of  $N$ -body simulations with a variety of different initial conditions (clumpy, hot, cool, smooth, etc.). They find the following general conclusions.

First,  $Q$  either stays the same or increases with time. In unbound regions, the initial structure (and hence the  $Q$ -parameter) is ‘frozen-in’ and does not change with time. In bound regions, any substructure is erased and  $Q$  increases. Therefore, the current  $Q$  is an upper limit on the initial  $Q$ .

Secondly,  $\Sigma_{\text{LDR}}$  increases with time. Massive stars are able to gain a ‘retinue’ of low-mass stars over time which increases their

local surface density. Therefore, the current  $\Sigma_{\text{LDR}}$  is an upper limit on the initial  $\Sigma_{\text{LDR}}$ .

Finally,  $\Lambda_{\text{MSR}}$  can evolve in a number of ways. The most massive stars can dynamically mass segregate as a bound cluster collapses (see Allison et al. 2009b), but a mass-segregated cluster can also be dynamically destroyed by multiple instability or binary formation leading to the ejection of the most massive stars (see also Allison et al. 2010; Allison & Goodwin 2011; Parker et al. 2014). Therefore, the current value of  $\Lambda_{\text{MSR}}$  must be interpreted carefully.

We can also include additional information on the dynamics of Wd 1 which suggests the region is close to having a virial velocity dispersion,<sup>1</sup> and is possibly subvirial (Cottaar et al. 2012).

### 7.1 The formation and evolution of Wd 1

What were the initial conditions of Wd 1?

First, Wd 1 may have formed with or without any primordial mass segregation.

Secondly, in its initial size, there are three general scenarios which we can imagine for Wd 1.

(1) Expanded. Wd 1 was initially much denser than we see now and has expanded to its current size (initial size  $< 1$  pc).

(2) Static. Wd 1’s initial conditions were very similar to what we see now (initial size  $\sim 2$  pc).

(3) Collapsing. Wd 1 was initially larger and dynamically cool, and is collapsing (initial size  $> 3$  pc).

Note that there is also a possible ‘hybrid’ scenario.

(4) Collapse and bounce. Wd 1 formed at a similar or larger size than we see now, collapsed to a denser state than we see now and has ‘bounced’ to its current size (e.g. Allison et al. 2009b; Allison & Goodwin 2011).

First, it is worth considering what mechanisms would be responsible for the behaviour in each of the scenarios.

Wd 1 will presumably have formed from a GMC significantly more massive than the mass of stars we now see. It is impossible to guess the star formation efficiency of the GMC which formed Wd 1, but a value of around 10 per cent seems reasonable (with potentially very significant local-to-global variations).

In the expanded scenario, the expulsion of the gas remaining after star formation would presumably be the driver of the expansion (e.g. Goodwin & Bastian 2006; Baumgardt & Kroupa 2007), although it is worth noting that stellar dynamics alone can cause significant expansion of clusters (Gieles, Moeckel & Clarke 2012; Moeckel et al. 2012; Parker & Meyer 2012; Parker & Dale 2013; Pfallner & Kaczmarek 2013; Banerjee & Kroupa 2017).

In the collapsing scenario, Wd 1 must have been relatively cool (low virial ratio) otherwise it would not be able to collapse. In this case, the effect of gas loss is nowhere near as dramatic as for that from a relaxed cluster due to the strong dependence of the effect of gas expulsion on the global virial ratio (Goodwin & Bastian 2006; Goodwin 2009; Smith et al. 2013, Lee & Goodwin 2016).

In the static case, one could imagine a situation where Wd 1 was initially cool enough that the gas loss was balanced (this would not need to be exact; we would still class as ‘static’ changes in radius between 1.5 or 2.5 pc and the current 2 pc size).

In the collapse and bounce case, Wd 1 forms dynamically cool (as in the collapsing scenario), collapses, reaches a very dense state

<sup>1</sup> This is that the velocity dispersion is close to that expected for a region in virial equilibrium, although we note that it is probably not in statistical equilibrium.

and ‘bounces’ due to heating from dynamical mass segregation, and possibly massive binary formation (see Allison et al. 2009b; Allison & Goodwin 2011).

Note that the bulk dynamical effects of mass-loss due to stellar evolution will be relatively small. With a standard IMF, a massive cluster is expected to have lost  $\sim 10$  per cent of its mass in 5 Myr (Trani, Mapelli & Bressan 2014). From an initially virialized cluster, this would cause an expansion by a factor of  $\sim 10$  per cent. Therefore, stellar evolution is irrelevant in our discussion of significant expansion or collapse, although we note that if the cluster was significantly mass segregated, mass-loss would occur in the central region of the cluster (a region with high local binding energy). If those stars lost significant mass, the cluster could potentially expand at a faster rate than if it was not mass segregated.

It is important to note that in each of these cases the *dynamical* age of Wd 1 is very different, and it is from this difference that we might hope to disentangle the history.

The *current* crossing time of Wd 1 with a mass of  $5 \times 10^4 M_{\odot}$  and a radius of 2 pc – and assuming it is virialized – is  $\sim 0.2$  Myr. Therefore, the physical age of 5 Myr is roughly 25 current crossing times.

In the expanded and bounced scenarios, Wd 1 will be (much) more than 25 crossing times old, in the static scenario it will be roughly 25 crossing times old, and in the collapsing scenario it will be (much?) less than 25 crossing times old. Therefore, different scenarios produce a present-day cluster with very different dynamical ages.

Dynamical age is important in erasing initial substructure, but mostly in that dynamical evolution causes some level of dynamical mass segregation.

In a cluster, the time-scale  $t(M)$  of a star of mass  $M$  to reach energy equipartition (hence to mass segregate) is

$$t(M) \sim \frac{\bar{m}}{M} \frac{N}{8 \ln N} t_{\text{cross}}, \quad (6)$$

where  $\bar{m}$  is the average mass of a star in the cluster (about  $0.4 M_{\odot}$ ),  $N$  is the total number of stars in the cluster and  $t_{\text{cross}}$  is the crossing time of the cluster.

Depending on the *dynamical* age of Wd 1, it is a different number of crossing times old, and so the mass to which mass segregation can occur changes. If we assume Wd 1 is in virial equilibrium (i.e. the static case) and take  $R = 2$  pc and  $M_{\text{cl}} = 5 \times 10^4 M_{\odot}$  then in 5 Myr we would expect to mass segregate down to  $\sim 20 M_{\odot}$ . (This is somewhat lower than the  $\sim 40 M_{\odot}$  down to which we possibly see mass segregation.)

Now, we consider each of the scenarios in turn.

**Expanded or collapse/bounce scenarios.** In both of these scenarios, Wd 1 would have been significantly denser at some point in the past than it is now. In its densest phase, the crossing time would have been much shorter allowing significant dynamical evolution to have occurred.

The effects of significant dynamical evolution would have been to erase any substructure and to allow dynamical mass segregation of the most massive stars to occur.

Dynamical mass segregation of the most massive stars occurs very rapidly in a dense state (e.g. Allison et al. 2009b) meaning that mass segregation would be expected even if it was not primordial (primordial mass segregation would be difficult to distinguish from dynamical mass segregation in such a system).

Therefore, the initial (or very early)  $\Lambda_{\text{MSR}}$  should have been significantly  $> 1$ , i.e. much higher than we now observe it to be. However, this mass segregation produces marginally stable ‘trapezium-

like’ systems which sometimes decay (Allison & Goodwin 2011). Usually the decay of such systems ejects some of the most massive stars and creates a signature of ‘inverse mass segregation’ (i.e.  $\Lambda_{\text{MSR}} < 1$ ; see Allison & Goodwin 2011; Parker et al. 2014), but it is possible for a mass-segregated cluster to move to a state where mass segregation is minimal. This is unlikely in such a scenario, but not so unlikely as to render the scenarios completely untenable.

The expansion must also be such that the cluster has had a chance to revitalize by its current 4–5 Myr age which is quite possible (see e.g. Banerjee & Kroupa 2013) but would require a little fine-tuning. And after the expansion, there must have been sufficient time for the initially mass-segregated massive stars to accumulate a retinue of low-mass stars to increase their local surface density to the significantly higher than average values now seen. Recent work by Parker & Wright (2016) has shown that a collapse and bounce would likely ‘freeze in’ an artificially high velocity dispersion, making the cluster appear to be supervirial when in fact it is in virial equilibrium (though perhaps not in statistical equilibrium). Whilst these simulations contain at least 10 times fewer stars than Wd 1, the artificially high velocity dispersion is caused by the high degree of violent relaxation, which in turn is a function of the initial conditions, including a high initial stellar density,  $10^4 M_{\odot} \text{pc}^{-3}$ , rather than the number of stars. Simulations with a lower initial density, and a less violent, more prolonged collapse, do not display this effect (Parker & Wright 2016). If the collapse and bounce scenario had already occurred for Wd 1, we would therefore expect to see a high-velocity dispersion. Given that Cottaar et al. (2012) measure a velocity dispersion consistent with a (sub)virial state for Westerlund 1, we suggest that the collapse and bounce scenario is unlikely.

**Static.** It is possible that we see Wd 1 at an age of 5 Myr as appearing quite similar to how it formed – a 2 pc diameter, somewhat elongated, roughly virialized, bound cluster.

Wd 1 is, at most, mass segregated to  $\sim 40 M_{\odot}$ . From our argument above (see equation 6), we would expect mass segregation in the static case to a mass probably somewhat lower ( $\sim 20 M_{\odot}$ ) than we actually observe it, although not significantly so given the number of assumptions we are making.

However, Wd 1 is segregated to roughly the level we would expect from an initially unsegregated cluster. Any primordial mass segregation would be enhanced, and the only way to fail to see evidence of primordial mass segregation would be if it was such that it matched what is expected dynamically (which raises the question of how Wd 1 ‘knew’ to primordially segregate to match the effect of dynamics).

As shown by Parker et al. (2014), we would expect  $\mathcal{Q}$  to rise somewhat from its initial value as substructure is erased.

During evolution, we would also expect the massive stars to collect significant retinues of low-mass stars into their potential wells. Thus, we would expect  $\Lambda_{\text{MSR}}$  to be slightly greater than unity, but not much (see Parker et al. 2014, their fig. 6 top row), and  $\Sigma_{\text{LDR}}$  to show a quite significant signature (see Parker et al. 2014, their fig. 7 top row).

An elongated cluster is quite plausible in a static model as it has not had time to completely erase any primordial anisotropies (in both velocity and/or spatial structure).

**Collapsing.** In a collapsing model, Wd 1 could have formed at maybe roughly twice the size we see now and be collapsing into a dense cluster; it cannot have formed at much more than twice the size we see now in order to have collapsed to its current state in 5 Myr. This is a more massive version of the scenario



for the formation of the ONC proposed by Allison & Goodwin (2011).<sup>2</sup>

As mass segregation is driven by dynamics, we would expect it to be somewhat slower than the prediction for the denser static case given above (which resulted in a lower limit of  $\sim 20 M_{\odot}$ ), and we estimate that the collapsing scenario would mass segregate Wd 1 down to a mass of 40–50  $M_{\odot}$ . This is a better fit to the observed value to which mass segregation is seen, but we would be hesitant to make too much of this as it involves many assumptions about the evolution.

The same arguments apply to massive stars collecting retinues of low-mass stars, erasure of substructure and elongation as in the static case.

**Summary.** With the current data, it is impossible to completely rule out any scenario for the evolution of Wd 1. It may have expanded, be collapsing, have collapsed and bounced, or have formed similar to the way we now see it. However, we can make some arguments as to which are the most likely.

Some dynamical mass segregation is expected in all scenarios as the effect of relaxation will be to remove energy from the most massive stars. In the collapsing or static scenarios, dynamics would be expected to give a signature very similar to what we observe (minor mass segregation of only the most massive stars). The massive stars have had sufficient time to collect a retinue of lower mass stars to give them a high relative surface density, and elongation would be a memory of anisotropic/clumpy initial conditions which have not been erased as the cluster is not dynamically evolved enough to have done this.

However, in the expanded or collapse/bounce scenarios, many different possible mass segregation signatures can arise (from very mass segregated to inverse mass segregation), so they require a little ‘luck’ in finishing in a state in which any primordial/dynamical mass segregation is erased such that  $\Lambda_{\text{MSR}} \sim 1$  at the end. If the cluster was lucky enough to expand with  $\Lambda_{\text{MSR}} \sim 1$ , then the massive stars would have had sufficient time to collect a retinue of lower mass stars.

It is very worth noting that in both the static and collapsing scenarios, the mass segregation is exactly what would be expected from dynamics alone, and therefore suggests that Wd 1 was *not* primordially mass segregated. In the expanded or collapse/bounce scenarios, primordial mass segregation may have been present, but significant dynamical segregation would have occurred, and then have been erased.

It is unclear whether the absence of primordial mass segregation has any implications for theories of star formation. Primordial mass segregation appeared to be ubiquitous in early simulations advocating competitive accretion as the dominant channel of massive star formation (Bonnell et al. 1997, 2001). However, in recent simulations that include more diverse physical processes such as feedback, primordial mass segregation is not present (Parker, Dale & Ercolano 2015; Parker & Dale 2017).

## 8 SUMMARY AND CONCLUSION

At  $\sim 5 \times 10^4 M_{\odot}$  and 4–5 Myr old Wd 1 is the most massive young cluster in the Galaxy. We have used a combination of near-infrared photometry from NTT/SofI (B08) and the 2MASS Point Source

Catalogue (Skrutskie et al. 2006) as well as optical photometry (Bonanos 2007; Negueruela et al. 2010) to analyse the distribution of stars, and massive stars in particular, in Wd 1.

We analyse the distribution of stars to look for substructure using the  $Q$ -parameter (Cartwright & Whitworth 2004). We also look at the relative distributions of massive stars with the  $\Lambda_{\text{MSR}}$  mass segregation ratio (Allison et al. 2009a) and also the relative local surface densities of massive stars with the  $\Sigma_{\text{LDR}}$  local surface density ratio (Maschberger & Clarke 2011; Parker et al. 2014). We find that Wd 1:

- (i) is relatively smooth, and slightly centrally concentrated with  $Q \sim 0.9$ ;
- (ii) shows little evidence for mass segregation with  $\Lambda_{\text{MSR}} = 1.6$ , but even then only for stars with masses  $> 40 M_{\odot}$ ;
- (iii) has massive stars preferentially in regions of higher-than-average surface density.

It is also known that Wd 1 is at most virialized and quite possibly subvirial (Cottaar et al. 2012).

We critically examine three possible models for the past evolution of Wd 1: that it formed smaller, larger (and possibly bounced back to its current radius) or roughly the same size as it is now. Our favoured model is that Wd 1 formed at a similar or lower density to its current values, with no primordial mass segregation. This readily explains the low-velocity dispersion of Wd 1, its lack of mass segregation, and why the most massive stars are in regions of high local surface density, and why Wd 1 is fairly smooth, but elongated (see e.g. Parker et al. 2014). Any model in which Wd 1 was much denser in the past requires an element of fine-tuning in explaining why there is no signature of mass segregation (either positive or negative), and if there is a signature why it matches the prediction from a static or collapsing model so well.

## ACKNOWLEDGEMENTS

This paper is based on observations collected at the European Southern Observatory, La Silla, Chile, and retrieved from the ESO archive (Program ID 67.C-0514).

RJP acknowledges support from the Royal Society in the form of a Dorothy Hodgkin Fellowship.

## REFERENCES

- Adams F. C., Hollenbach D., Laughlin G., Gorti U., 2004, *ApJ*, 611, 360  
 Allison R. J., Goodwin S. P., 2011, *MNRAS*, 415, 1967  
 Allison R. J., Goodwin S. P., Parker R. J., Portegies Zwart S. F., de Grijs R., Kouwenhoven M. B. N., 2009a, *MNRAS*, 395, 1449  
 Allison R. J., Goodwin S. P., Parker R. J., de Grijs R., Portegies Zwart S. F., Kouwenhoven M. B. N., 2009b, *ApJ*, 700, L99  
 Allison R. J., Goodwin S. P., Parker R. J., Portegies Zwart S. F., de Grijs R., 2010, *MNRAS*, 407, 1098  
 André P., 2002, *Ap&SS*, 281, 51  
 Andersen M., Gennaro M., Brandner W., Stolte A., de Marchi G., Meyer M. R., Zinnecker H., 2017, *A&A*, 602, A22  
 Ascenso J., Alves J., Lago M. T. V. T., 2009, *Ap&SS*, 324, 113  
 Banerjee S., Kroupa P., 2013, *ApJ*, 764, 29  
 Banerjee S., Kroupa P., 2015, *MNRAS*, 447, 728  
 Banerjee S., Kroupa P., 2017, *A&A*, 597, A28  
 Bastian N., Gieles M., Ercolano B., Gutermuth R., 2009, *MNRAS*, 392, 868  
 Baumgardt H., Kroupa P., 2007, *MNRAS*, 380, 1589  
 Bonanos A. Z., 2007, *AJ*, 133, 2696  
 Bonnell I. A., Bate M. R., Clarke C. J., Pringle J. E., 1997, *MNRAS*, 285, 201

<sup>2</sup> The degree to which a distribution can collapse depends on the initial virial ratio and the degree of substructure. A cool, very clumpy distribution can collapse by a factor of 2–3 (Allison & Goodwin 2011).

- Bonnell I. A., Bate M. R., Clarke C. J., Pringle J. E., 2001, *MNRAS*, 323, 785
- Brandner W., Clark J. S., Stolte A., Waters R., Negueruela I., Goodwin S. P., 2008, *A&A*, 478, 137 (B08)
- Bressert E. et al., 2010, *MNRAS*, 409, L54
- Caputo D. P., de Vries N., Portegies Zwart S., 2014, *MNRAS*, 445, 674
- Cardelli J. A., Clayton G. C., Mathis J. S., 1989, *ApJ*, 345, 245
- Cartwright A., Whitworth A. P., 2004, *MNRAS*, 348, 589
- Clark J. S., Negueruela I., Crowther P. A., Goodwin S. P., 2005, *A&A*, 434, 949
- Cottaar M., Meyer M. R., Andersen M., Espinoza P., 2012, *A&A*, 539, A5
- Degl'Innocenti S., Prada Moroni P. G., Marconi M., Ruoppo A., 2008, *Ap&SS*, 316, 25
- Devillard N., 2001, in Harnden F. R., Jr, Primini F. A., Payne H. E., eds, *ASP Conf. Ser. Vol. 238, Astronomical Data Analysis Software and Systems X*. Astron. Soc. Pac., San Francisco, p. 525
- Diolaiti E., Bendinelli O., Bonaccini D., Close L., Currie D., Parmeggiani G., 2000, *A&AS*, 147, 335
- Gennaro M., Brandner W., Stolte A., Henning T., 2011, *MNRAS*, 412, 2469 (G11)
- Gennaro M., Prada Moroni P. G., Tognelli E., 2012, *MNRAS*, 420, 986
- Gieles M., Moeckel N., Clarke C. J., 2012, *MNRAS*, 426, L11
- Goodwin S. P., 2009, *Ap&SS*, 324, 259
- Goodwin S. P., Bastian N., 2006, *MNRAS*, 373, 752
- Kroupa P., 1995, *MNRAS*, 277, 1491
- Kruijssen J. M. D., Pelupessy F. I., Lamers H. J. G. L. M., Portegies Zwart S. F., Icke V., 2011, *MNRAS*, 414, 1339
- Krumholz M. R., Klein R. I., McKee C. F., 2007, *ApJ*, 656, 959
- Küpfer A. H. W., Maschberger T., Kroupa P., Baumgardt H., 2011, *MNRAS*, 417, 2300
- Lada C. J., 2010, *Phil. Trans. R. Soc. A*, 368, 713
- Lada C. J., Lada E. A., 2003, *ARA&A*, 41, 57
- Lada C. J., Margulis M., Dearborn D., 1984, *ApJ*, 285, 141
- Lee P. L., Goodwin S. P., 2016, *MNRAS*, 460, 2997
- Longmore S. N. et al., 2014, in Beuther H., Klessen R. S., Dullemond C. P., Henning T., eds, *Protostars and Planets VI*. Univ. Arizona Press, Tucson, AZ, p. 291
- Lopez L. A., Krumholz M. R., Bolatto A. D., Prochaska J. X., Ramirez-Ruiz E., 2011, *ApJ*, 731, 91
- Marigo P., Girardi L., Bressan A., Groenewegen M. A. T., Silva L., Granato G. L., 2008, *A&A*, 482, 883
- Maschberger T., Clarke C. J., 2011, *MNRAS*, 416, 541
- Moeckel N., Holland C., Clarke C. J., Bonnell I. A., 2012, *MNRAS*, 425, 450
- Negueruela I., Clark J. S., Ritchie B. W., 2010, *A&A*, 516, A78
- Nishiyama S. et al., 2006, *ApJ*, 638, 839
- Parker R. J., 2014, *MNRAS*, 445, 4037
- Parker R. J., Dale J. E., 2013, *MNRAS*, 432, 986
- Parker R. J., Dale J. E., 2017, *MNRAS*, 470, 390
- Parker R. J., Goodwin S. P., 2015, *MNRAS*, 449, 3381
- Parker R. J., Meyer M. R., 2012, *MNRAS*, 427, 637
- Parker R. J., Quanz S. P., 2012, *MNRAS*, 419, 2448
- Parker R. J., Wright N. J., 2016, *MNRAS*, 457, 3430
- Parker R. J., Bouvier J., Goodwin S. P., Moraux E., Allison R. J., Guieu S., Güdel M., 2011, *MNRAS*, 412, 2489
- Parker R. J., Maschberger T., Alves de Oliveira C., 2012, *MNRAS*, 426, 3079
- Parker R. J., Wright N. J., Goodwin S. P., Meyer M. R., 2014, *MNRAS*, 438, 620
- Parker R. J., Dale J. E., Ercolano B., 2015, *MNRAS*, 446, 4278
- Peretto N., André P., Belloche A., 2006, *A&A*, 445, 979
- Pfalzner S., Kaczmarek T., 2013, *A&A*, 559, A38
- Skrutskie M. F. et al., 2006, *AJ*, 131, 1163
- Smith R., Goodwin S., Fellhauer M., Assmann P., 2013, *MNRAS*, 428, 1303
- Stetson P. B., 1987, *PASP*, 99, 191
- Trani A. A., Mapelli M., Bressan A., 2014, *MNRAS*, 445, 1967
- Tutukov A. V., 1978, *A&A*, 70, 57
- Vincke K., Breslau A., Pfalzner S., 2015, *A&A*, 577, A115
- Westerlund B., 1961, *AJ*, 66, 57
- Wright N. J., Parker R. J., Goodwin S. P., Drake J. J., 2014, *MNRAS*, 438, 639
- Zinnecker H., Yorke H. W., 2007, *ARA&A*, 45, 481

## SUPPORTING INFORMATION

Supplementary data are available at [MNRAS](https://www.mnras.org) online.

**Table 1.** Selected rows and columns from the full photometric catalogue.

Please note: Oxford University Press is not responsible for the content or functionality of any supporting materials supplied by the authors. Any queries (other than missing material) should be directed to the corresponding author for the article.

This paper has been typeset from a  $\text{\TeX}/\text{\LaTeX}$  file prepared by the author.