



UNIVERSITY OF LEEDS

This is a repository copy of *Oestrogen receptor β (ER β) regulates osteogenic differentiation of human dental pulp cells.*

White Rose Research Online URL for this paper:
<http://eprints.whiterose.ac.uk/122348/>

Version: Accepted Version

Article:

Alhodhodi, A, Alkharobi, H, Humphries, M et al. (5 more authors) (2017) Oestrogen receptor β (ER β) regulates osteogenic differentiation of human dental pulp cells. *Journal of Steroid Biochemistry and Molecular Biology*, 174. pp. 296-302. ISSN 0960-0760

<https://doi.org/10.1016/j.jsbmb.2017.10.012>

© 2017 Elsevier Ltd. This manuscript version is made available under the CC-BY-NC-ND 4.0 license <http://creativecommons.org/licenses/by-nc-nd/4.0/>

Reuse

Items deposited in White Rose Research Online are protected by copyright, with all rights reserved unless indicated otherwise. They may be downloaded and/or printed for private study, or other acts as permitted by national copyright laws. The publisher or other rights holders may allow further reproduction and re-use of the full text version. This is indicated by the licence information on the White Rose Research Online record for the item.

Takedown

If you consider content in White Rose Research Online to be in breach of UK law, please notify us by emailing eprints@whiterose.ac.uk including the URL of the record and the reason for the withdrawal request.



eprints@whiterose.ac.uk
<https://eprints.whiterose.ac.uk/>

Oestrogen receptor (ER β) regulates osteogenic differentiation of human dental pulp cells.

¹Aishah Alhodhodi, ¹Hanaa Alkharobi, ²Matthew Humphries, ¹Hasanain Alkhafaji, ^{1,3}Reem El-Gendy, ¹Georg Feichtinger, ²Valerie Speirs* and ¹James Beattie*

¹ Dept of Oral Biology, Wellcome Trust Brenner Building, St James University Hospital, University of Leeds

²Leeds Institute of Cancer and Pathology, University of Leeds, UK

³Dept. of Oral Pathology, Faculty of Dentistry, Suez Canal University, Ismailia, Egypt

*Authors for correspondence

- V.Speirs@leeds.ac.uk
- J.Beattie@leeds.ac.uk

Abstract

Human dental pulp cells (hDPCs) express oestrogen receptor (ER) isoforms ER α , ER β 1 and ER β 2, as well as a 7-transmembrane G protein-coupled receptor, GPR30, that mediates rapid oestrogen signalling. Following osteogenic differentiation of these cells ER β 1 and ER β 2 were up regulated approximately 50-fold while ER α and GPR30 were down regulated, but to a much lesser degree (approximately 2-fold). ER β was characterised as a 59 kDa protein following SDS-PAGE. ER β was detected in both nuclear and cytoplasmic cell compartments following immunofluorescence of cultured cells. Furthermore isoform specific antibodies detected both ER β 1 and ER β 2 in DPC cultures and *in situ* analysis of ER β expression in decalcified tooth/pulp sections identified the odontoblast layer of pulp cells juxtaposed to the tooth enamel as strongly reactive for both ER β isoforms. Finally the use of isoform specific agonists identified ER β as the main receptor responsible for the pro-osteogenic effect of oestrogenic hormones in this tissue.

Introduction

Tooth loss (edentulism) is associated with reduction of alveolar bone mass in post-menopausal women [1-3] and can be counteracted by oestrogen replacement therapy [4-7]. Similarly alterations in local and systemic oestrogen concentrations as seen during use of chemical contraception or in patients undergoing adjuvant therapeutic strategies in hormone dependant breast cancer is associated with challenges to periodontal health [8-10]. Despite these important epidemiological findings very little is known about the mechanism of action of oestradiol (E_2) within the cells and tissues of the oral cavity. In most cells E_2 binds to cytosolic oestrogen receptors (ERs) which translocate to the nucleus and regulate gene expression in association with other trans and cis acting factors. In addition a cell membrane associated 7TM G protein linked ER (GPR30) is associated with the acute E_2 action in many cells.[11, 12] Several tissues within the oral cavity contain populations of mesenchymal stem cells (MSCs) [13-16] which are able to differentiate into a matrix mineralising phenotype and this can be stimulated by the action of E_2 [17, 18]. Accordingly, ER mRNA and protein is expressed in niche MSC populations in the oral cavity including those from periodontal ligament- PDLCs- [19, 20] and dental pulp- DPCs [21, 22] although the proteins remain rather poorly characterised in these tissues. Two classical ER isoforms have been described- ER α and ER β - which are structurally and functionally related but which represent two different gene products [23, 24]. Although PDLCs and DPCs are reported to express both ER isoforms, the literature is conflicted with regard to which ER isoform(s) are involved in the differentiation of cells to a matrix mineralising phenotype [25-28] and there is little information on the contribution of ER isoforms to the differentiation of stem cell populations from other tissue niches within the oral cavity. For these reasons we have characterised ER isoform expression and function in DPCs isolated from healthy third molars at the cellular and whole tissue level using qRT-PCR, Western blotting, IHC and IF. In addition we have used isoform specific agonists to determine the activity of ER α and ER β during differentiation of these cells to a matrix mineralisation phenotype.

Materials

Phenol red free α -MEM, dextran charcoal stripped serum (DCS) and phosphate buffered saline (PBS) was from Lonza (Slough, UK); penicillin/streptomycin (PS), L-glutamine, L-ascorbic acid and dexamethasone, were from Sigma (Dorset, UK). Collagenase (Type I), was from Life Technologies (UK). Tissue culture plastic was from Corning (Amsterdam, Netherlands). 4,4',4''-(4-Propyl-[1H]-pyrazole-1,3,5-triyl) trisphenol (PPT) and 2,3-bis(4-Hydroxyphenyl)-propionitrile (DPN) were from Tocris Bioscience (Abingdon, UK). Details of anti-ER β antibodies are provided in Supplementary Table 1. HRP conjugated secondary antibodies anti-mouse (ab97046), anti-rabbit (ab6721) and anti- β actin (ab8227) were from Abcam. For IF, Texas Red – goat anti-mouse IgG (T6390), Alexa Fluor 594 goat anti-rabbit IgG (A11037) and Alexa Fluor 488 donkey anti-mouse IgG (A21202) were from Life Technologies, UK. NP40 cell lysis buffer (FNN0021) was from Invitrogen UK. BCA protein assay reagent, WB stripping buffer (46430) and TaqMan primers and probes for qRT-PCR were from ThermoScientific, UK. Reagents for WB including 4-15% gradient gels, PVDF membranes and molecular weight markers were from BioRad, UK. Tissue culture treated glass slides for IF were from Falcon, UK. All other reagents were of analytical grade or better.

Methods

Tissue culture

Isolation, growth and differentiation of DPCs were essentially as described previously [29] with the exception that cells were maintained and passaged in Phenol Red free α MEM containing, 10% dextran charcoal-stripped serum (PR-DCS). Similarly all experiments (qRT-PCR, WB, IF, IHC and *in vitro* bioassay) were done in cells grown in this medium. Unless otherwise stated experiments were performed on DPCs derived from healthy pulps from three separate donors and triplicate technical replicates were performed in each instance.

qRT-PCR

Details of mRNA purification, cDNA synthesis, and qRT-PCR and data analysis have also been described previously [29, 30]. Routinely osteogenic markers ALP, OCN, Runx2 and oestrogen receptor isoforms ER α , ER β 1, ER β 2 and GPR30 were assayed using TaqMan probes and primers. GAPDH or HGPRT were used as house-keeping genes. Assay identifiers for TaqMan qRT-PCR reactions are presented in Supplementary Table 2.

Western blot

DPCs were cultured for 7, 14 or 21 day under basal or osteogenic conditions and cell lysates were prepared using NP40 cell lysis buffer. Protein was quantified using Pierce™ BCA protein assay and lysates were stored at -20 °C prior to analysis. Lysates containing equivalent amounts of protein (typically 30-50 ug) were diluted in x4 Laemmli sample buffer containing β -mercaptoethanol (5% final concentration) and electrophoresed through 4-15% gradient SDS-PAGE gels for 1h at 120 V. Proteins were transferred to PVDF semi dry membranes using the Trans-Blot Turbo (BioRad) for 10 minutes. Membranes were blocked with TBS containing 5% BSA and 0.1% Tween20 (blocking buffer) for at least 1hour on a shaker at room temperature. Subsequently, membranes were incubated overnight room temperature (RT) with anti-ER- β antibodies Ab 288 and MC10 (1:200; a kind gift from Dr John Hawse [31]) in TBS containing 0.1% Tween20 (TBS-T). These antibodies have been extensively validated for specificity in WB applications [31, 32] Membranes were washed x5 with TBS-T and incubated with anti-mouse horseradish peroxidase (HRP) conjugated secondary antibody (1:100000) for 2 hours at room temperature in TBS-T. Membranes were washed x4 with TBST and x1 with TBS, and developed with ECL substrate. Images were processed and stored on the Gel-Doc system (Bio-Rad). For quantitation and densitometry blots were stripped with WB stripping buffer and re-probed with anti- β actin.

Immunofluorescence (IF)

DPCs at passage 4 were seeded in PR-DCS into a 4- chamber polystyrene vessel containing tissue culture treated glass slides (Falcon). At 70 % confluence cells were washed once with PBS and fixed using ice cold methanol for 10 min. Methanol was aspirated and slides left to air dry at RT for 15 min then stored at 4C. Prior to IF slides were rehydrated in PBS for 5 min. Each chamber was blocked using 4 drops of 0.5% skimmed milk in PBS (blocking buffer - BB) for 1 hour and 100 μ l of diluted primary antibody (ab 78946; 1:50 in BB) was applied for 1 hour followed by 3 x 5 min washes in PBS. A control in which primary antibody was omitted was included. Secondary antibody (Alexa Fluor or Texas-Red conjugated) diluted 1:300 in BB was applied for 30 min. After 3x15 min washes with PBS slides were mounted using Prolong gold mountant plus DAPI. Slides were allowed to cure overnight at RT and covered with tin foil prior to imaging with a Zeiss microscope.

Immunohistochemistry (IHC)

Dental pulp tissues were obtained from freshly extracted human third molars as described previously [29]. Pulp tissue was gently separated by sterilized tweezers and the tissue then preserved in 4% formaldehyde for paraffin embedding and sectioning. Tissues were

processed in a VIP Tissue processor (Sakura) through 70 % EtOH, 90 % EtOH, 4 changes of 100 % EtOH, 3 changes of 100 % xylene and 3 changes of wax, prior to paraffin embedding. 5 µm sections were cut using a Leitz rotary microtome and mounted on glass slides using a 40 °C water bath and slides incubated at 37 °C overnight prior to staining. Slides were de-waxed at 70 °C on hot plates for 30 minutes prior to antigen retrieval. This was performed in order to enhance the detection of antigen using Mena Path Revelation buffer solution (cat no MP-607-X500) in the Mena Path pressure cooker containing 500 ml distilled water for 40 minutes. Slides were then immersed in PBST (1x PBS containing 0.2% Tween 20) buffer and all remaining steps performed at room temperature. Slides were washed in PBST and blocked with 100 µl Novacastra peroxidase (cat no RE7101) for 15 minutes followed by PBST wash. 100 µl of protein blocking solution (Novacastra - cat no RE7102) was added for 15 minutes. Primary anti-ERβ antibody (PPG5/10 or 57/3 both Serotec) was diluted in Zymed antibody diluent and applied for 1 hour and followed by 3x5 min washes in PBST. Both antibodies have been extensively validated for use in IHC [31, 33, 34]. Post primary antibody block (Novolink polymer cat no RE7112) was applied for 30 min followed by 3x5 min PBS washes. The slides then were incubated in diluted DAB chromogen (1:20 v/v) (cat no RE7105) for 5 min. The slides were counterstained in Mayer's Haematoxylin for 1 min and washed under running tap water, then in Scott's tap water substitute for 2 minutes followed by a further wash in running tap water. The slides were dehydrated in a series of graded ethanols (25% for 15 seconds, 50% for 2 minutes, 70% for 5 minutes, and 100% for 5 minutes) and were immersed in xylene 3 times for 3 minutes. The slides were mounted in DPX and left overnight to set prior to scanning using the ScanScope™ system at x20 magnification, and then visualised using ImageScope™ software. For staining of serial sections from demineralised tooth freshly extracted human third molars were washed with dH₂O and any attached tissue was removed. Teeth were placed in 10% EDTA solution (300 mg of NaOH was added to the solution to enhance the dissolving process). The solution was changed every 2-3 days. The decalcification process was monitored weekly by x-ray until teeth were completely translucent. Decalcified teeth were paraffin embedded and sectioned as described for pulp tissue.

In vitro bioassay

ALP activity was assayed as described previously [35] with some modifications. Briefly DPCs were grown to confluence in PF-DCS. ER agonist (DPN or PPT) was added at the indicated concentrations in osteogenic differentiation medium. Medium (inclusive of ER agonists) was changed at days 4, 7 and 10 and cultures were terminated at day 14. Cells were lysed by the addition of 200ul 0.1% Triton X-100 followed by three cycles of freeze-thawing. Lysates were centrifuged (5 min; 10000g) and 20ul was assayed for ALP activity.

Data are presented as nmol p-nitrophenol (pNP) formed per ug DNA and represent mean \pm SD (n=3).

Statistics

Data were analysed by Student's unpaired t-test (densitometry) or by two way Anova followed by Bonferroni's multiple comparisons test (bioassay) (GraphPad Prism v 7.0) In both instance differences were considered significant at $p < 0.05$.

Results

Treatment of DPCs with dexamethasone (Dx) and ascorbic acid (AA) caused osteogenic differentiation of DPCs as evidenced by up regulation of early (ALP) and late (OCN) markers of osteogenesis. The transcription factor RunX2 important for the process of osteogenic differentiation was also up regulated at both early (1wk) and late (3wk) time points (Fig 1). In addition differentiated cell cultures stained positively for both ALP and Alizarin Red an indicator of matrix mineralisation (data not shown). Therefore under our culture conditions differentiation of DPCs was achieved and confirmed recent findings from our laboratories [29]. We next investigated the expression of ER isoforms during differentiation of DPCs. As well as ER α and ER β we also investigated the expression of the more recently described membrane associated G protein linked ER – GPR30. We found that there was a consistent up regulation of both isoforms of ER β which we examined (- β 1 and - β 2) at each time point. Therefore ER β 1 was up regulated 27 ± 7 , 57 ± 21 and 63 ± 23 fold at days 7, 14 and 21 respectively in differentiating DPCs (mean \pm SEM; n=3). For ER β 2 corresponding values were 32 ± 9 , 53 ± 15 and 53 ± 8 fold at days 7, 14 and 21 (mean \pm SEM; n=3). – Fig2. For the other two isoforms of ER examined there was a tendency for down regulation especially at the later time points. Therefore at 21 days in culture ER α and GPR30 were down regulated to 62 ± 15 and $64\pm 0.5\%$ respectively of the levels seen in undifferentiated DPCs.

Because ER β protein has been largely uncharacterised in DPCs we used 2 extensively validated Mabs to detect ER β in lysates prepared from undifferentiated (B) and differentiated (O) cell cultures - see Methods section. WBs indicated a protein of Mr 59kDa which is close to the theoretical Mr for ER β 1 (59.2 kDa) - Fig3 .A non-specific cross reacting species was also apparent at Mr \sim 65 kDa. This has previously been described in the ER β inducible cell line used to validate Ab288 [32]. Of note however densitometric analysis (Fig 3b) indicated that ER β levels in lysates from osteogenically differentiated cells did not differ from lysates prepared from undifferentiated cells (p=0.46). As such this data is not consistent with qRT-PCR data reported in Fig2 indicating increased ER β 1 and β 2 mRNA in differentiated cells (see Discussion section). The presence of ER β protein was confirmed by IF using clearly showing the presence of the protein in the cytosol and nucleus of DPCs (Fig4). In addition the presence of both β 1 and β 2 isoforms was confirmed by IHC using validated and non-cross reactive ER β isoform specific antibodies (Fig 5) and both ER β isoforms were detected in whole pulps obtained after sectioning decalcified third molars (Fig 6). Interestingly in these whole tooth sections staining for ER β 2 was particularly evident in the peripheral pulp (sub-enamel) layer of tissue which contains mature and precursor odontoblast cells.

Finally we investigated a possible functional role for ER during differentiation of DPCs using alkaline phosphatase (ALP) activity as a marker of osteogenic differentiation as described previously in our laboratories [29]. PPT is a selective agonist of ER α (410-fold v β) whereas DPN is an ER β selective agonist (70-fold v α) [36, 37]. Fig 7 shows that DPN stimulates ALP activity in a dose dependent fashion over the concentration range 10^{-8} – 10^{-5} M whilst PPT had little effect on ALP activity. These data suggest that the osteogenic promoting activity of E₂ in DPCs is mediated by the ER β isoform.

Discussion

Our observation of ER expression in DPCs confirms previous reports of expression in these cells [21, 22]. Although we report for the first time up regulation of both ER β 1 and ER β 2 in DPCs during osteogenic differentiation, increased expression of ER β during osteogenic differentiation of closely related periodontal ligament stem cells (PDLSCs) has been described previously [38]. We characterised ER β protein in DPC lysates by WB and in cells and whole pulp sections by IF and IHC with a panel of validated antibodies directed towards different epitopes of ER β (Supplementary Table 1). In WB we found a main reactive band with a Mr for the ER β species in DPC of 59 kDa (Figure 3). In addition a higher Mr species was identified in WB studies (approx.66kDa). Higher Mr non-specific reactivity with both Ab288 and MC10 has been described although specific reactivity was confirmed at 59kDa using doxycycline inducible ER β in the MDA-MB-231 breast cancer cell line [32]. The epitopes recognised by each of the antibodies used in WB lie within the N-terminal portion of ER β protein and as such would be expected to recognise both ER β 1 and ER β 2 isoforms. However we found no evidence of ER β 2 species (Mr 55.5 kDa). Despite the fact that many studies have examined ER β isoforms expression by WB in different tissues [38-42] in most instances these antibodies have not been validated for specific isoform detection using this technique and this area requires further investigation. Although previous studies have assumed that current commercially available pan-ER β antibodies detect mainly the ER β 1 isoform in WB of cell lysates we note that in our experiments β 1 and β 2 specific antisera were unreactive with DPC lysate despite previous reports of specific reactivity of these reagents in human Leydig cells [43], colorectal carcinoma cells [44] and breast tumour tissue [45]. Although there may be several reasons for this (sensitivity, specificity, and epitope availability) we note that the lack of reactivity of the ER β 1 specific antibody on WB confirms the findings of an extensive validation study reported recently by Nelson et al [32]. In contrast both ER β 1 and ER β 2 species were detected by IHC (Fig5), a methodology for which the antibodies used have been extensively validated (see above) and this confirms our qRT-PCR data.

There are some functional studies describing E₂ action in cells and tissues within the oral cavity [25, 26, 46-48]. PDLCs isolated from ovariectomized (OVX) rats showed decreased matrix mineralisation compared to cells derived from sham operated controls and E₂ treatment of OVX derived cell cultures enhanced the osteogenic differentiation of these cultures [28]. Subsequent siRNA transfection of PDLCs suggested a role for both ER α and ER β isoforms in E₂ mediated action [27, 28]. However, in direct contrast two studies have used siRNA transfection to show that ER β is the main ER isoform involved in E₂ stimulated osteogenic differentiation of PDLCs [25, 26]. Although these latter studies are consistent with our findings of ER β activity in DPCs using isoform specific agonists (Fig 7) this area requires further investigation. There is also conflicting data concerning the signalling pathways used by E₂ during stimulation of osteogenic differentiation of DPCs with reports that activation [18] or inhibition [17] of NF- κ B is required for differentiation of DPCs to a matrix mineralising phenotype. In stem cells from apical papillae (SCAP) E₂ is reported to stimulate osteogenesis via activation of the MAPK pathway [49] although whether this pathway is activated in DPCs is currently unknown. Although there are no other reports on GPR30 expression in dental tissues recent studies using membrane impermeable E₂ conjugates and phytoestrogens suggest that this cell membrane ER can be activated in DPCs and PDLCs [46, 50] and this is an area worthy of further study.

We report dissociation between ER β mRNA and protein expression. ER β 1 and β 2 mRNA is up regulated several fold during osteogenic differentiation of DPCs but such changes are not translated into differences in protein levels (Figs 2 and 3). A disconnection between ER β mRNA and protein levels has been reported by other workers [51, 52], with work on breast cancer suggesting this may be as a result of translational control [53, 54]. This is also an area worthy of further investigation. Finally differentiation of DPCs in our laboratories is achieved with dexamethasone and ascorbic acid and it is important to confirm that changes in ER β expression are due to differentiation per se and not to the independent action of either agent. Although a previous report suggested that dexamethasone had no effect on ER β mRNA expression in discrete rat CNS nuclei [51] it will be important to establish that ER β is up regulated under dexamethasone free differentiating conditions. The osteogenic differentiation of stem cells derived from subcutaneous adipose tissue (ASCs) and bone marrow (BM-MSCs) in the absence of dexamethasone has been described previously [55] and such experiments on DPCs are currently underway in our laboratories.

Acknowledgements

AA and HA acknowledges the Royal Embassy of Saudi Arabia – Cultural Bureau (UK) for financial support. RE acknowledges WELMEC, a Centre of Excellence in Medical

Engineering funded by the Wellcome Trust and EPSRC, under grant number WT 088908/Z/09/Z for financial support. We thank Dr John Hawse (Department of Biochemistry and Molecular Biology, Mayo Clinic, Rochester, Minnesota) for kindly providing monoclonal anti-ER β MC10.

References

1. Daniell, H.W., *Postmenopausal tooth loss. Contributions to edentulism by osteoporosis and cigarette smoking.* Arch Intern Med, 1983. **143**(9): p. 1678-82.
2. Krook, L., et al., *Experimental studies on osteoporosis.* Methods Achiev Exp Pathol, 1975. **7**: p. 72-108.
3. Rowe, D.J., *Bone loss in the elderly.* J Prosthet Dent, 1983. **50**(5): p. 607-10.
4. Grodstein, F., G.A. Colditz, and M.J. Stampfer, *Post-menopausal hormone use and tooth loss: a prospective study.* J Am Dent Assoc, 1996. **127**(3): p. 370-7, quiz 392.
5. Grodstein, F., G.A. Colditz, and M.J. Stampfer, *Tooth loss and hormone use in postmenopausal women.* Compend Contin Educ Dent Suppl, 1998(22): p. S9-16.
6. Norderyd, O.M., et al., *Periodontal status of women taking postmenopausal estrogen supplementation.* J Periodontol, 1993. **64**(10): p. 957-62.
7. Paganini-Hill, A., *The benefits of estrogen replacement therapy on oral health. The Leisure World cohort.* Arch Intern Med, 1995. **155**(21): p. 2325-9.
8. Taichman, L.S., et al., *Periodontal Health in Women With Early-Stage Postmenopausal Breast Cancer Newly on Aromatase Inhibitors: A Pilot Study.* J Periodontol, 2015. **86**(7): p. 906-16.
9. Dzeletovic, B., et al., *Dental pulp blood flow and its oscillations in women with different estrogen status.* J Endod, 2012. **38**(9): p. 1187-91.
10. Karthik, S.J., et al., *Evaluation of estrogen receptor and circulating estradiol levels in pre- and postmenopausal women with periodontal disease.* J Int Acad Periodontol, 2009. **11**(3): p. 202-5.
11. Carmeci, C., et al., *Identification of a gene (GPR30) with homology to the G-protein-coupled receptor superfamily associated with estrogen receptor expression in breast cancer.* Genomics, 1997. **45**(3): p. 607-17.
12. Prossnitz, E.R., et al., *Estrogen signaling through the transmembrane G protein-coupled receptor GPR30.* Annu Rev Physiol, 2008. **70**: p. 165-90.
13. Gronthos, S., et al., *Postnatal human dental pulp stem cells (DPSCs) in vitro and in vivo.* Proc Natl Acad Sci U S A, 2000. **97**(25): p. 13625-30.
14. Morscheck, C., et al., *Isolation of precursor cells (PCs) from human dental follicle of wisdom teeth.* Matrix Biology, 2005. **24**(2): p. 155-165.
15. Seo, B.-M., et al., *Investigation of multipotent postnatal stem cells from human periodontal ligament.* The Lancet, 2004. **364**(9429): p. 149-155.
16. Sonoyama, W., et al., *Characterization of the apical papilla and its residing stem cells from human immature permanent teeth: a pilot study.* Journal of endodontics, 2008. **34**(2): p. 166-171.
17. Wang, Y., et al., *Estrogen deficiency inhibits the odonto/osteogenic differentiation of dental pulp stem cells via activation of the NF-kappaB pathway.* Cell Tissue Res, 2013. **352**(3): p. 551-9.
18. Wang, Y., et al., *10(-7) m 17beta-oestradiol enhances odonto/osteogenic potency of human dental pulp stem cells by activation of the NF-kappaB pathway.* Cell Prolif, 2013. **46**(6): p. 677-84.
19. Jonsson, D., et al., *Immunocytochemical demonstration of estrogen receptor beta in human periodontal ligament cells.* Arch Oral Biol, 2004. **49**(1): p. 85-8.

20. Morishita, M., A. Shimazu, and Y. Iwamoto, *Analysis of oestrogen receptor mRNA by reverse transcriptase-polymerase chain reaction in human periodontal ligament cells*. Arch Oral Biol, 1999. **44**(9): p. 781-3.
21. Inaba, T., et al., *Expression status of mRNA for sex hormone receptors in human dental pulp cells and the response to sex hormones in the cells*. Arch Oral Biol, 2013. **58**(8): p. 943-50.
22. Jukic, S., et al., *Estrogen receptors in human pulp tissue*. Oral Surg Oral Med Oral Pathol Oral Radiol Endod, 2003. **95**(3): p. 340-4.
23. Jia, M., K. Dahlman-Wright, and J.A. Gustafsson, *Estrogen receptor alpha and beta in health and disease*. Best Pract Res Clin Endocrinol Metab, 2015. **29**(4): p. 557-68.
24. Warner, M., S. Nilsson, and J.A. Gustafsson, *The estrogen receptor family*. Curr Opin Obstet Gynecol, 1999. **11**(3): p. 249-54.
25. Liang, L., et al., *Effect of estrogen receptor beta on the osteoblastic differentiation function of human periodontal ligament cells*. Arch Oral Biol, 2008. **53**(6): p. 553-7.
26. Mamalis, A., et al., *Oestrogen regulates proliferation, osteoblastic differentiation, collagen synthesis and periostin gene expression in human periodontal ligament cells through oestrogen receptor beta*. Arch Oral Biol, 2011. **56**(5): p. 446-55.
27. Pan, F., et al., *Oestrogen receptors are involved in the osteogenic differentiation of periodontal ligament stem cells*. Biosci Rep, 2011. **31**(2): p. 117-24.
28. Zhang, B., et al., *Estrogen deficiency leads to impaired osteogenic differentiation of periodontal ligament stem cells in rats*. Tohoku J Exp Med, 2011. **223**(3): p. 177-86.
29. Alkharobi, H., et al., *IGFBP-2 and -3 co-ordinately regulate IGF1 induced matrix mineralisation of differentiating human dental pulp cells*. Stem Cell Res, 2016. **17**(3): p. 517-522.
30. El-Gendy, R., et al., *Osteogenic differentiation of human dental pulp stromal cells on 4555 Bioglass(R) based scaffolds in vitro and in vivo*. Tissue Eng Part A, 2013. **19**(5-6): p. 707-15.
31. Wu, X., et al., *Development, characterization, and applications of a novel estrogen receptor beta monoclonal antibody*. J Cell Biochem, 2012. **113**(2): p. 711-23.
32. Nelson, A.W., et al., *Comprehensive assessment of estrogen receptor beta antibodies in cancer cell line models and tissue reveals critical limitations in reagent specificity*. Mol Cell Endocrinol, 2017. **440**: p. 138-150.
33. Critchley, H.O., et al., *Wild-type estrogen receptor (ERbeta1) and the splice variant (ERbetacx/beta2) are both expressed within the human endometrium throughout the normal menstrual cycle*. J Clin Endocrinol Metab, 2002. **87**(11): p. 5265-73.
34. Saunders, P.T., et al., *ERbeta1 and the ERbeta2 splice variant (ERbetacx/beta2) are expressed in distinct cell populations in the adult human testis*. J Clin Endocrinol Metab, 2002. **87**(6): p. 2706-15.
35. Kim, J.G., et al., *Stimulating effects of quercetin and phenamil on differentiation of human dental pulp cells*. Eur J Oral Sci, 2013. **121**(6): p. 559-65.
36. Meyers, M.J., et al., *Estrogen receptor-beta potency-selective ligands: structure-activity relationship studies of diarylpropionitriles and their acetylene and polar analogues*. J Med Chem, 2001. **44**(24): p. 4230-51.
37. Stauffer, S.R., et al., *Pyrazole ligands: structure-affinity/activity relationships and estrogen receptor-alpha-selective agonists*. J Med Chem, 2000. **43**(26): p. 4934-47.
38. Tang, X., et al., *Up-regulation of estrogen receptor-beta expression during osteogenic differentiation of human periodontal ligament cells*. J Periodontal Res, 2008. **43**(3): p. 311-21.
39. Crider, A., et al., *Dysregulation of estrogen receptor beta (ERbeta), aromatase (CYP19A1), and ER co-activators in the middle frontal gyrus of autism spectrum disorder subjects*. Mol Autism, 2014. **5**(1): p. 46.
40. Hamilton-Burke, W., et al., *Phosphorylation of estrogen receptor beta at serine 105 is associated with good prognosis in breast cancer*. Am J Pathol, 2010. **177**(3): p. 1079-86.

41. Shatalova, E.G., et al., *Estrogen and cytochrome P450 1B1 contribute to both early- and late-stage head and neck carcinogenesis*. *Cancer Prev Res (Phila)*, 2011. **4**(1): p. 107-15.
42. Tam, A., et al., *Estradiol increases mucus synthesis in bronchial epithelial cells*. *PLoS One*, 2014. **9**(6): p. e100633.
43. Carpino, A., et al., *Detection of aromatase and estrogen receptors (ERalpha, ERbeta1, ERbeta2) in human Leydig cell tumor*. *Eur J Endocrinol*, 2007. **157**(2): p. 239-44.
44. Wong, N.A., et al., *ERbeta isoform expression in colorectal carcinoma: an in vivo and in vitro study of clinicopathological and molecular correlates*. *J Pathol*, 2005. **207**(1): p. 53-60.
45. Shaaban, A.M., et al., *Nuclear and cytoplasmic expression of ERbeta1, ERbeta2, and ERbeta5 identifies distinct prognostic outcome for breast cancer patients*. *Clin Cancer Res*, 2008. **14**(16): p. 5228-35.
46. Manokawinchoke, J., et al., *Estradiol induces osteoprotegerin expression by human dental pulp cells*. *Odontology*, 2016. **104**(1): p. 10-8.
47. Morishita, M., et al., *The effects of oestrogen on osteocalcin production by human periodontal ligament cells*. *Arch Oral Biol*, 1998. **43**(4): p. 329-33.
48. Morishita, M., et al., *Estradiol enhances the production of mineralized nodules by human periodontal ligament cells*. *J Clin Periodontol*, 1999. **26**(11): p. 748-51.
49. Li, Y., et al., *17beta-estradiol promotes the odonto/osteogenic differentiation of stem cells from apical papilla via mitogen-activated protein kinase pathway*. *Stem Cell Res Ther*, 2014. **5**(6): p. 125.
50. Luo, L.J., et al., *Genistein regulates the IL-1 beta induced activation of MAPKs in human periodontal ligament cells through G protein-coupled receptor 30*. *Arch Biochem Biophys*, 2012. **522**(1): p. 9-16.
51. Suzuki, S. and R.J. Handa, *Regulation of estrogen receptor-beta expression in the female rat hypothalamus: differential effects of dexamethasone and estradiol*. *Endocrinology*, 2004. **145**(8): p. 3658-70.
52. Vinayagam, R., et al., *Association of oestrogen receptor beta 2 (ER beta 2/ER beta cx) with outcome of adjuvant endocrine treatment for primary breast cancer--a retrospective study*. *BMC Cancer*, 2007. **7**: p. 131.
53. Smith, L., et al., *Differential regulation of oestrogen receptor beta isoforms by 5' untranslated regions in cancer*. *J Cell Mol Med*, 2010. **14**(8): p. 2172-84.
54. Smith, L., et al., *Expression of oestrogen receptor beta isoforms is regulated by transcriptional and post-transcriptional mechanisms*. *Biochem J*, 2010. **429**(2): p. 283-90.
55. Kim, J.H., et al., *Hypoxia Suppresses Spontaneous Mineralization and Osteogenic Differentiation of Mesenchymal Stem Cells via IGFBP3 Up-Regulation*. *Int J Mol Sci*, 2016. **17**(9).

Figure Legends

Fig 1 qRT-PCR analysis of osteogenic marker expression in differentiating DPCs. *ALP*, *OCN* and *Runx2* expression was determined at 7 and 21 day time points and show up regulation of early (ALP), late (OCN) and time independent (RunX2) osteogenic markers.

.Fig 2 qRT-PCR analysis of ER isoform expression in differentiating DPCs. *ER α* , *ER β 1*, *ER β 2* and *GPR30* expression was determined at 7, 14 and 21 day time points in basal and differentiated cultures of DPCs. ER β 1 and β 2 isoforms were up regulated following differentiation and ER α and GPR30 were down regulated to a lesser degree.

Fig 3 (a) WB of ER β in lysates of basal (B) and osteogenically differentiated (O) DPCs at 7 and 14 days. Blots were probed with ab 288. Mr for main reactive species is indicated. Similar results were obtained with Mab MC10. This experiment was repeated 3 times for each antibody and representative data is shown. (b) Densitometric analysis of ER β protein in basal (b) and osteogenically differentiated (o) DPC lysates. WBs were stripped and re-probed with β actin as loading control. Triplicate tracks from each of 4 separate blots were analysed and data are represented as mean \pm SD n=10 basal; n=11 osteogenic AU = arbitrary units. P=0.46.

Fig 4 IF detection of ER β expression in DPCs. Cells were grown in tissue culture treated glass slides and processed for IF detection of ER β . DAPI (top), ER β (middle) and merged (bottom) images are shown

Fig 5 IHC detection of ER β expression in dental pulp tissue. Pulp tissue was isolated from healthy third molars and processed for IHC. Pan-ER β , ER β 1 and ER β 2 isoform detection is shown (arrowed) in relevant figure panels. In negative controls primary antibody was omitted.

Fig 6 Demineralised tooth sections were stained with H&E, pan ER β , ER β 1 and ER β 2. For H&E panel the location of residual enamel matrix (O) along with dental pulp (P) is indicated. Strong staining of ER β 2 in the odontoblast layer is indicated by arrows.

Fig 7 *In vitro* bioassay of selective ER agonists. AP activity was used as a marker of osteogenic differentiation in DPCs. ER α selective (PPT) and ER β selective (DPN) activity was determined over the concentration range 0-10 μ M. Data represent triplicate technical replicates and this experiment was repeated 3 times. Data are presented as mean \pm SD;

n=3. In some instances symbol size is larger than SD. Analysis was by two-way Anova followed by Bonferroni's multiple comparisons test * $p < 0.05$; ** $p < 0.0001$.

Supplementary Tables

Table 1S Details for ER β antibodies used in the current study.

Table 2S TaqMan assay identifiers for qRT-PCR Further details are available at <http://www.appliedbiosystems.com>

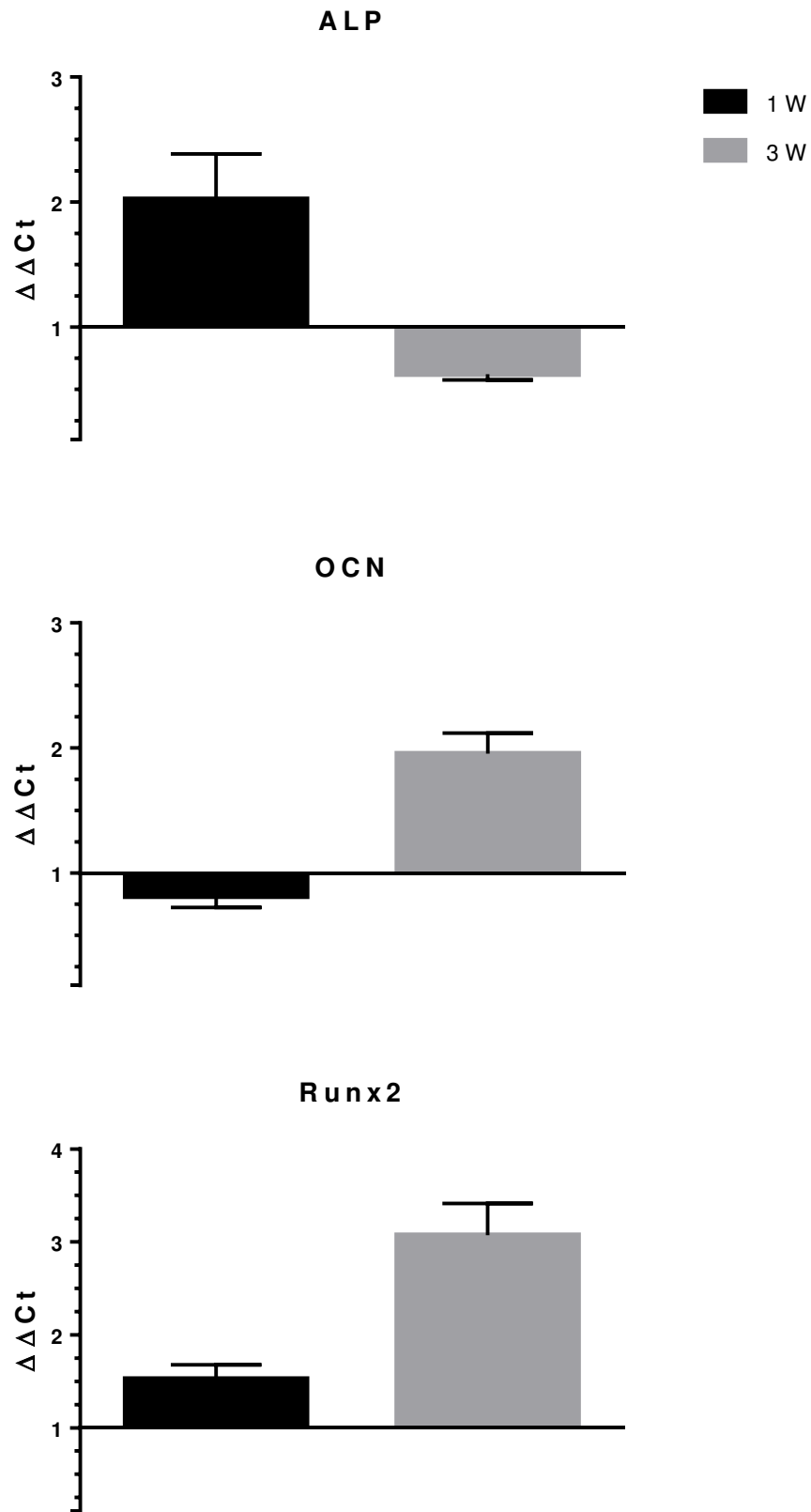
Figure 1

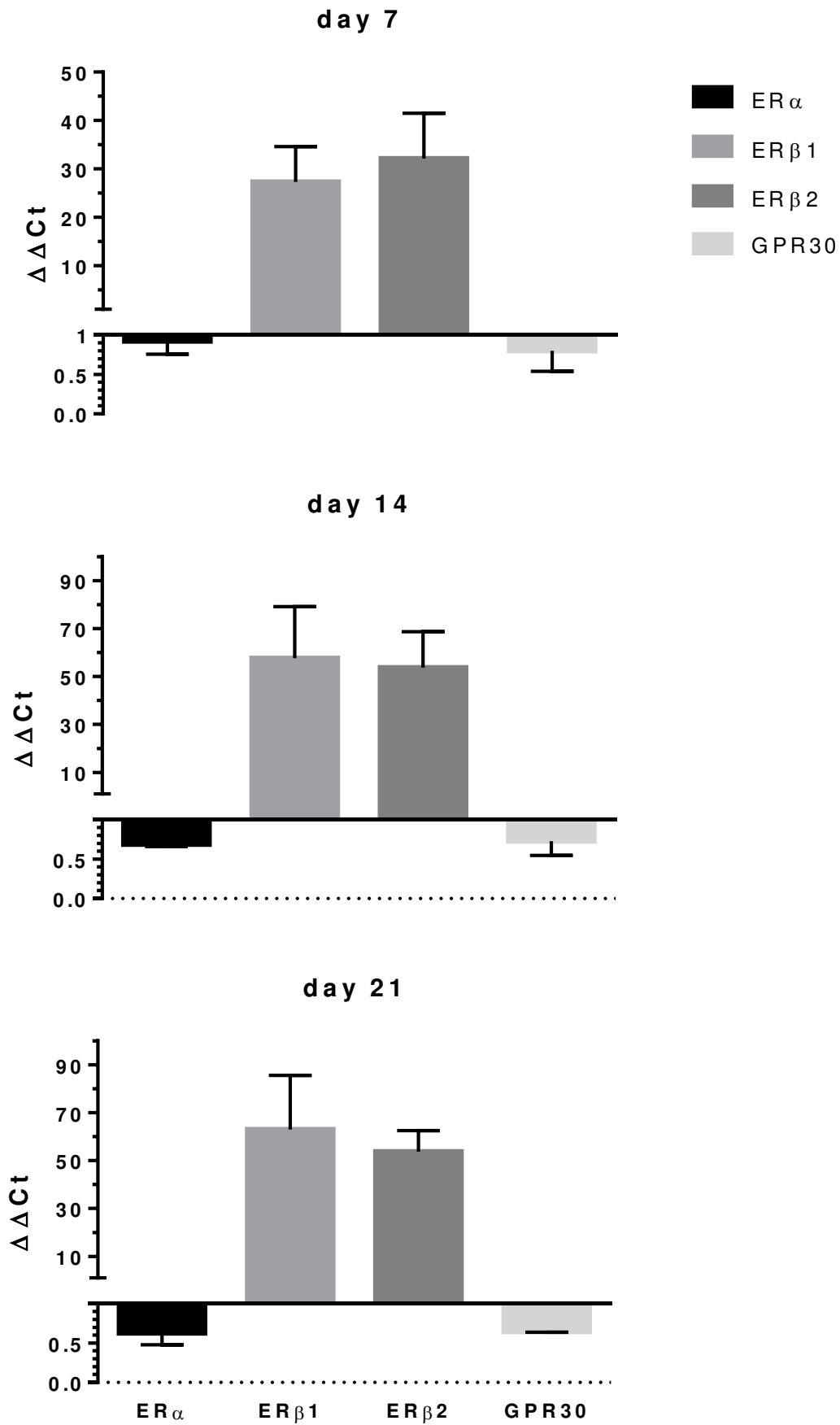
Figure 2

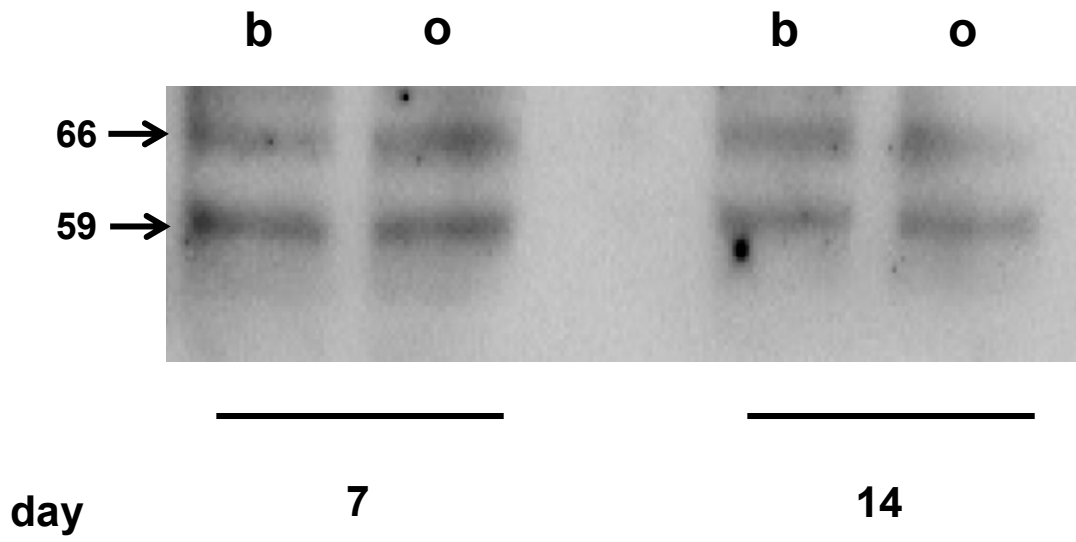
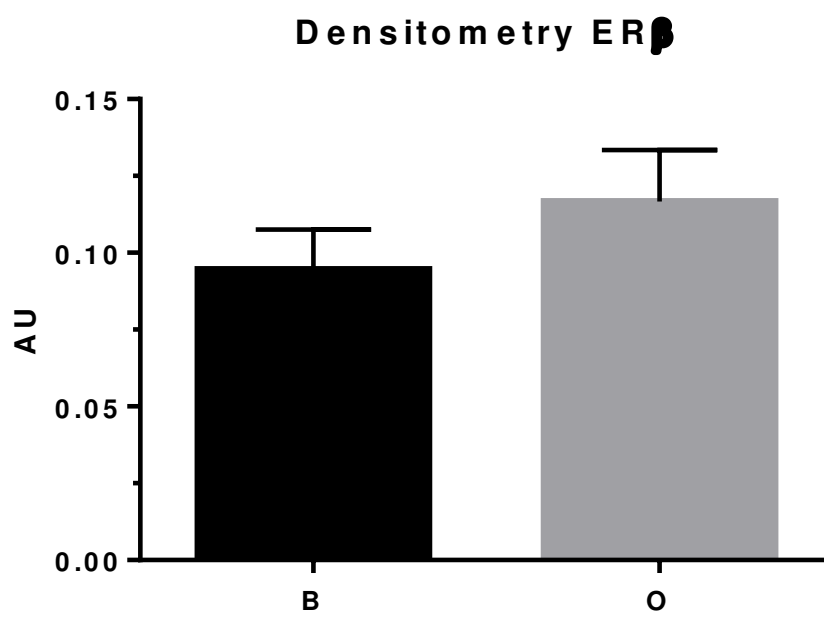
Figure 3a**Figure 3b**

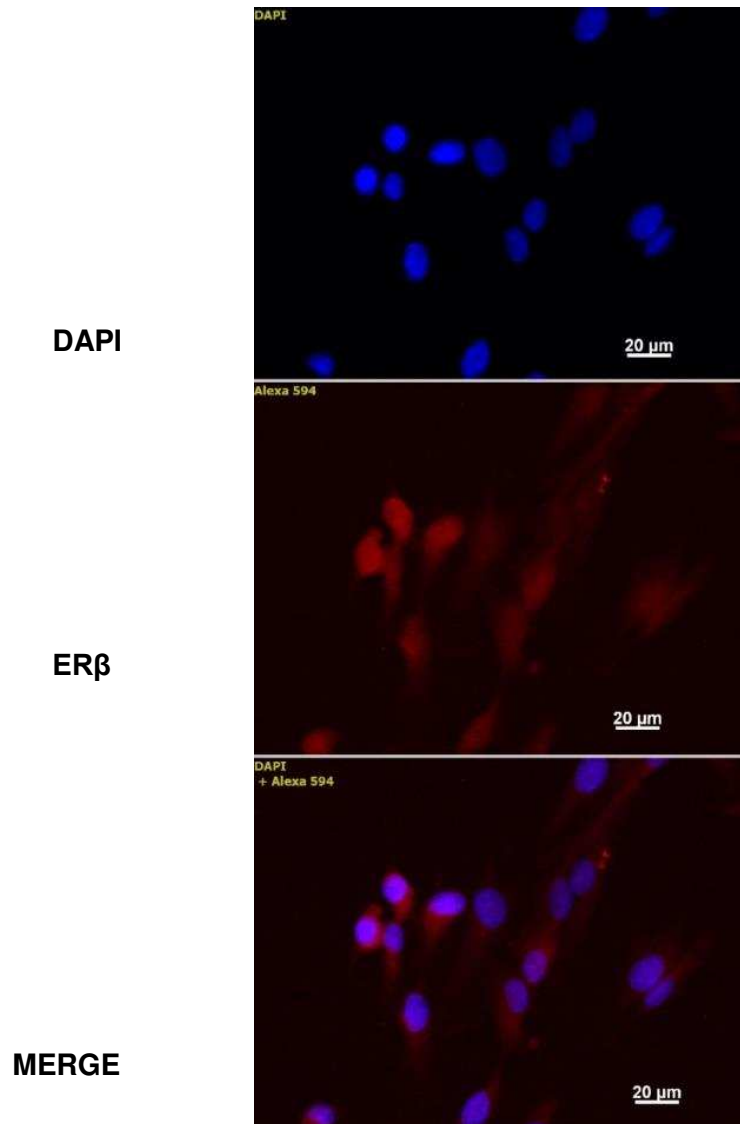
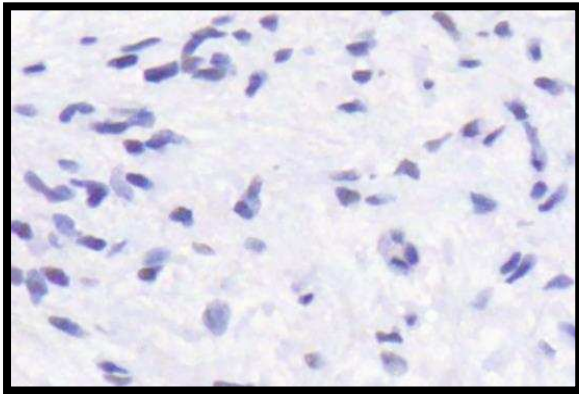
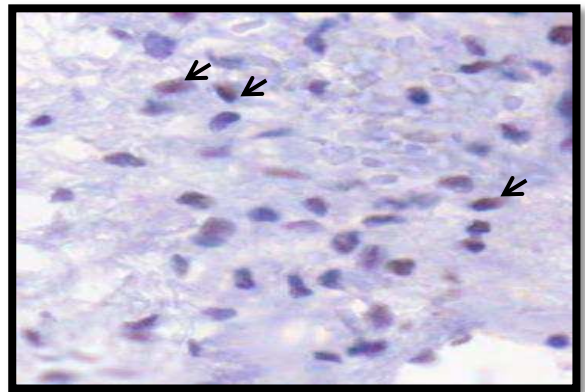
Figure 4

Figure 5

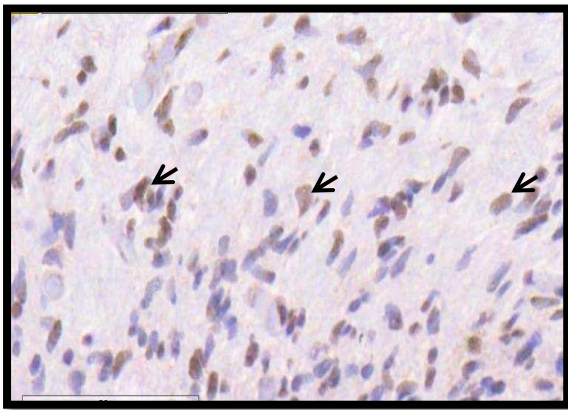
-ve control



ER β



ER β 1



ER β 2

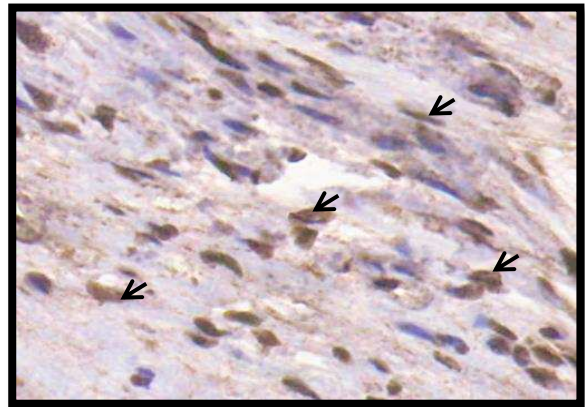


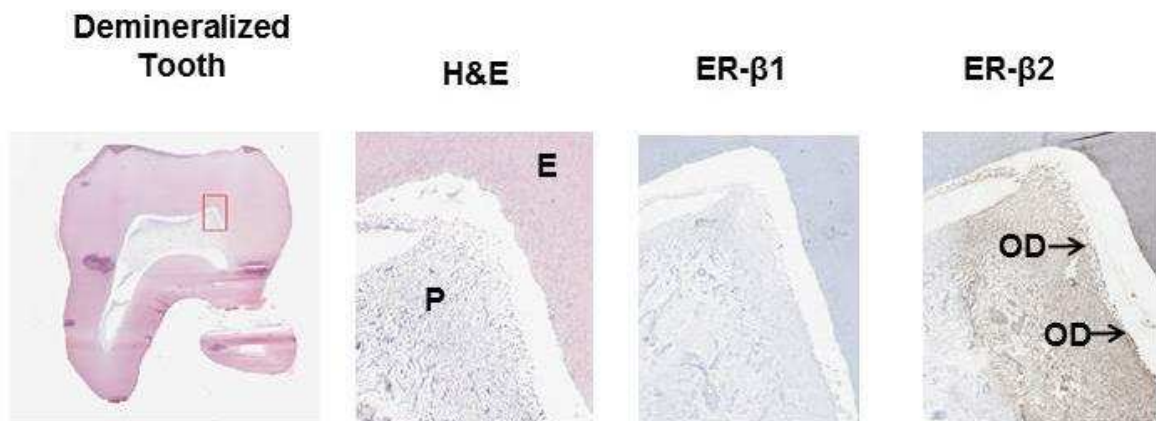
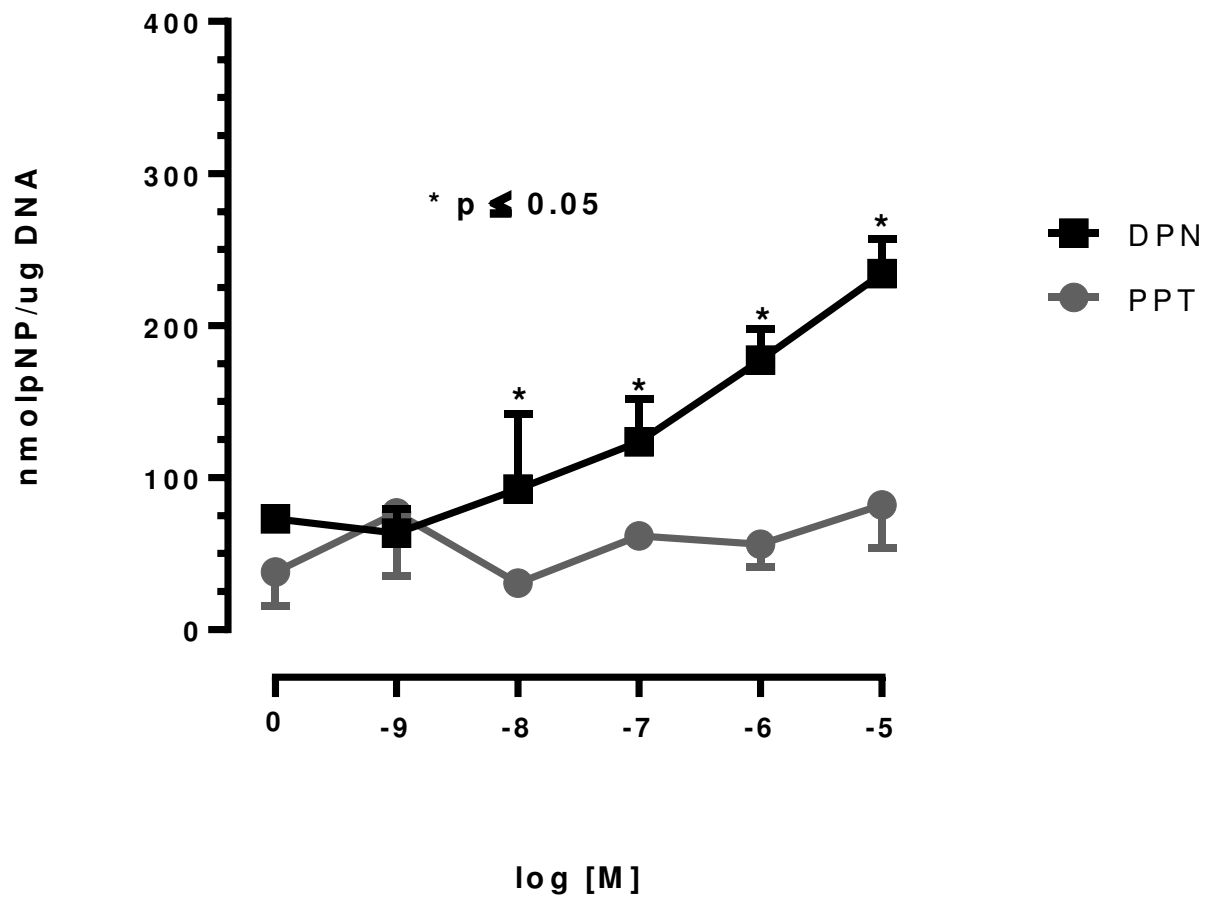
Figure 6

Figure 7

Supplementary Table 1

	<u>Supplier</u>	<u>Host</u>	<u>Epitope</u>	<u>Application</u>
ab 78946	Abcam	rabbit polyclonal	peptide (S105)	IF
ab 288	Abcam	mouse monoclonal	ER β 1-153	WB
MC10	Wu et al [31]	mouse monoclonal	ER β 1-140	WB
PPG5/10	Thermofisher	mouse monoclonal	C-terminal (β 1)	IHC
57/3	GeneTex	mouse monoclonal	C-terminal (β 2)	IHC

IF immunofluorescence; WB Western blot; IHC immunohistochemistry

Supplementary Table 2

Gene name	Taqman[®] gene expression assay number
<i>GAPDH</i>	Hs99999905_m1
<i>HGPRT</i>	Hs03929098_m1
<i>ALP</i>	Hs01029144_m1
<i>Runx2</i>	Hs00231692_m1
<i>OCN</i>	Hs00609452_g1
<i>ERα</i>	Hs00174860_m1
<i>ERβ1</i>	Hs01100359_m1
<i>ERβ2</i>	Hs01105520_m1
<i>GPR30</i>	Hs01116133_m1