



Deposited via The University of Leeds.

White Rose Research Online URL for this paper:

<https://eprints.whiterose.ac.uk/id/eprint/116035/>

Version: Published Version

Article:

Mabikwa, OV, Greenwood, DC, Baxter, PD et al. (2017) Erratum to: Assessing the reporting of categorised quantitative variables in observational epidemiological studies. BMC Health Services Research, 17 (1). 307.

<https://doi.org/10.1186/s12913-017-2237-9>

Reuse

Items deposited in White Rose Research Online are protected by copyright, with all rights reserved unless indicated otherwise. They may be downloaded and/or printed for private study, or other acts as permitted by national copyright laws. The publisher or other rights holders may allow further reproduction and re-use of the full text version. This is indicated by the licence information on the White Rose Research Online record for the item.

Takedown

If you consider content in White Rose Research Online to be in breach of UK law, please notify us by emailing eprints@whiterose.ac.uk including the URL of the record and the reason for the withdrawal request.

ERRATUM

Open Access



Erratum to: Assessing the reporting of categorised quantitative variables in observational epidemiological studies

Onkabetse V. Mabikwa^{1*}, Darren C. Greenwood¹, Paul D. Baxter¹ and Sarah J. Fleming²

Erratum

Upon publication of the original article [1], it was noticed that on page 3 in Fig. 1, the textbox appearing with the word “methodological” should read “Identification”. This has now been acknowledged and corrected in this erratum. This has now been incorporated in the new Fig. 1 shown below.

Author details

¹Division of Epidemiology and Biostatistics, LICAMM, School of Medicine, University of Leeds, Leeds, UK. ²Section of Epidemiology and Biostatistics, LICAP, School of Medicine, University of Leeds, Leeds, UK.

Received: 6 April 2017 Accepted: 6 April 2017

Published online: 26 April 2017

Reference

1. Mabikwa OV, Greenwood DC, Baxter PD, Fleming SJ. Assessing the reporting of categorised quantitative variables in observational epidemiological studies. *BMC Health Serv Res.* 2017;17(1):201.

* Correspondence: umovm@leeds.ac.uk

¹Division of Epidemiology and Biostatistics, LICAMM, School of Medicine, University of Leeds, Leeds, UK

Full list of author information is available at the end of the article



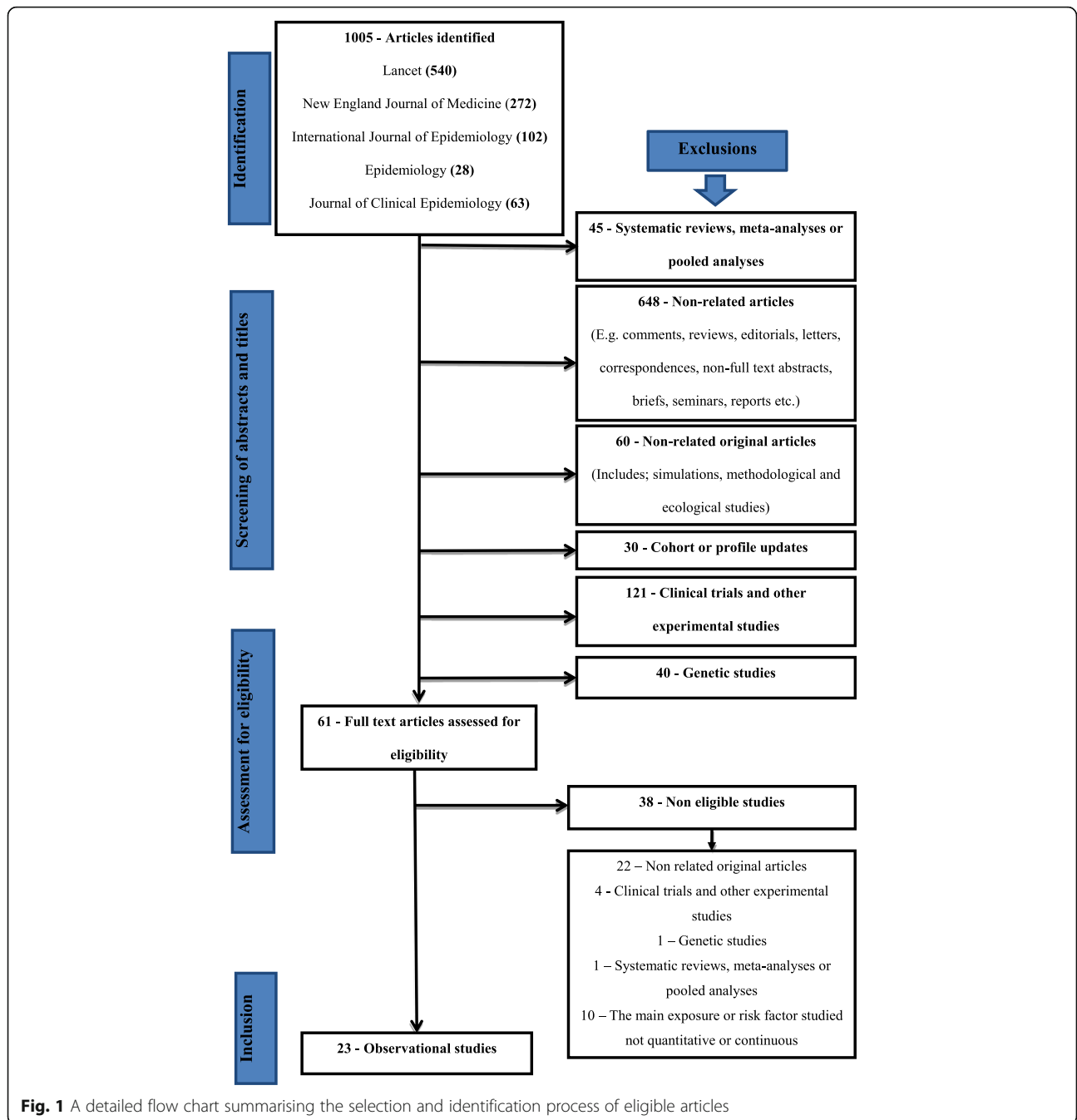


Fig. 1 A detailed flow chart summarising the selection and identification process of eligible articles