



UNIVERSITY OF LEEDS

This is a repository copy of *The textility of marking: performers' annotations as indicators of the creative process in performance*.

White Rose Research Online URL for this paper:  
<http://eprints.whiterose.ac.uk/113067/>

Version: Accepted Version

---

**Article:**

Payne, E [orcid.org/0000-0003-2109-8126](https://orcid.org/0000-0003-2109-8126) and Schuiling, F (2017) The textility of marking: performers' annotations as indicators of the creative process in performance. *Music and Letters*, 98 (3). pp. 438-464. ISSN 0027-4224

<https://doi.org/10.1093/ml/gcx055>

---

(c) 2017, The Author. Published by Oxford University Press. All rights reserved. This is a pre-copyedited, author-produced PDF of an article accepted for publication in *Music & Letters* following peer review. The version of record, 'Payne, E and Schuiling, F (2017) The textility of marking: performers' annotations as indicators of the creative process in performance. *Music and Letters*, 98 (3). pp. 438-464,' is available online at:  
<https://doi.org/10.1093/ml/gcx055>

**Reuse**

Items deposited in White Rose Research Online are protected by copyright, with all rights reserved unless indicated otherwise. They may be downloaded and/or printed for private study, or other acts as permitted by national copyright laws. The publisher or other rights holders may allow further reproduction and re-use of the full text version. This is indicated by the licence information on the White Rose Research Online record for the item.

**Takedown**

If you consider content in White Rose Research Online to be in breach of UK law, please notify us by emailing [eprints@whiterose.ac.uk](mailto:eprints@whiterose.ac.uk) including the URL of the record and the reason for the withdrawal request.



[eprints@whiterose.ac.uk](mailto:eprints@whiterose.ac.uk)  
<https://eprints.whiterose.ac.uk/>

Musical examples for:

Payne, E. & Schuiling, F. (2017). The textility of marking: Performers' annotations as indicators of the creative process in performance. *Music & Letters*, 98(3), 438–464.

The published article can be accessed here: <https://doi.org/10.1093/ml/gcx055>

The image shows a musical score for 'Clouds' (bb. 11-14) with handwritten annotations. The score is written in treble clef with a key signature of two flats. It features several measures of music with dynamic markings: *p* (piano) at measure 11, *f* (forte) at measure 12, and *mp* (mezzo-piano) at measure 13. There are handwritten annotations including 'Gd' and 'Fd' at the top left, 'DT' at the top left of measure 13, 'D#' and 'E+' at the bottom left, and 'F+' at the bottom right. A legend indicates that a square symbol means 'finger as notated but without l.h. 1'. There are also handwritten notes like 'raise 1-hr.2' and '6' under some notes. The score includes slurs, ties, and various fingering indications.

Ex. 1. Trial sheet for 'Clouds' (bb. 11–14).

The image shows a musical score for Basset Clarinet in A with handwritten annotations. The score is written in treble clef with a key signature of one sharp (F#). It features several measures of music with dynamic markings: *mf* (mezzo-forte) at measure 18, *f* (forte) at measure 19, and *mp* (mezzo-piano) at measure 20. There are handwritten annotations including '18' at the top left, 'F# A E G Eb' at the top left, 'RR L R' at the top left of measure 18, 'L' at the top left of measure 19, 'RRL' at the top left of measure 20, and 'L E!' at the top right. There are also handwritten notes like 'Basset Clarinet in A' and a star symbol at the bottom left. The score includes slurs, ties, and various fingering indications.

Ex. 2. Downer's annotations in response to problematic fingering combinations, section I, 'Clouds' (basset clarinet part).

A musical score for the basset clarinet part of 'Clouds', section I. The score is written on a grand staff with a treble clef and a key signature of one sharp (F#). The music consists of a series of chords in the upper register and a melodic line in the lower register. Handwritten annotations include a large five-pointed star on the left, a double-headed arrow above the upper register with the text 'R-R' in the center, and a bracket under the lower register with the text '> breath sound'.

Ex. 3. Downer's annotations in response to problematic fingering combinations, section I, 'Clouds' (basset clarinet part).

A musical score for the basset clarinet part of 'Czardas', section I, measures 10-18. The score is written on a grand staff with a treble clef and a key signature of two flats (Bb, Eb). The tempo is marked 'Andante con molto rubato'. Handwritten annotations include large, wavy lines above the staff with the text 'R' and 'R' written inside them. The score includes dynamic markings: *p* (piano) at measure 12, *pp* (pianissimo) at measure 13, *p* at measure 16, and *poco mp* (poco mezzo-piano) at measure 18. A trill is marked with 'tr.' and a flat sign above a note in measure 18.

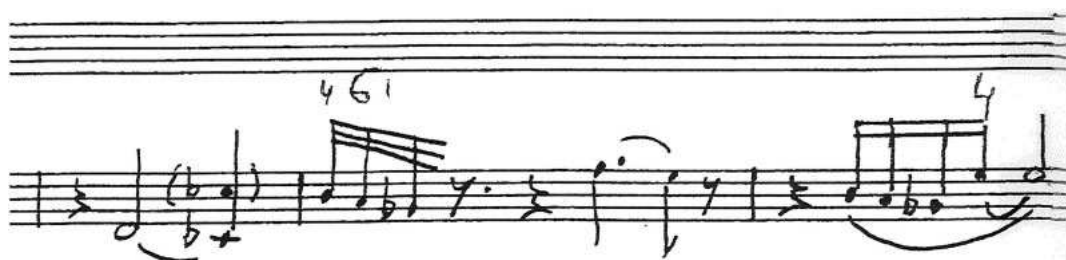
Ex. 4. 'Czardas' (bb. 10-18) with Archibald's annotations (basset clarinet part).



Ex. 5. 'Czardas' (b. 61) with Archibald's annotations (basset clarinet part).



Ex. 6. Wierbos's copy of Kneushoorn, with 'Begin F' in the margins.



Ex. 7. Boenwas with trombone positions added by Wierbos.

Handwritten musical score for 'East of the Sun (West of the Moon)'. The score consists of two staves. The top staff contains a melodic line with notes and rests, and the bottom staff contains a bass line with notes and rests. Above the staves, there are handwritten chord symbols: F#7, C#-7, Eb7, Abm, Dbs, and Dbm7. Below the staves, there are handwritten fingering numbers (1-4) and other markings indicating finger positions for the trombone.

Ex. 8. East of the Sun (West of the Moon) with trombone positions added by Wierbos

# KEHANG

The score is titled "KEHANG" and is marked with a tempo of "a." (allegretto). It consists of several systems of staves:

- Piano (p):** The first system shows the piano part with treble (t.) and bass (tz.) clefs. The second system continues the piano part with similar clefs.
- Violins (vl.) and Cellos/Double Basses (vc, cb):** The piano part is accompanied by violin (vl.), viola (vc), and cello/double bass (cb) parts.
- Viola (tr.):** A separate staff for the trumpet part is transcribed under the viola part. It includes a section with a box containing rhythmic notation:  $\begin{matrix} \times & \times & \times & \times & \times \\ \downarrow & \downarrow & \downarrow & \downarrow & \downarrow \end{matrix}$ .
- Rehearsal Markers:** The score includes "1<sup>a</sup> volta" and "2<sup>a</sup> volta" markings above the piano part.

EX. 9. Kehang with the 'entry motif', a trumpet part transcribed under the viola part and the same part written at the bottom of the page