



This is a repository copy of *Animal bone*.

White Rose Research Online URL for this paper:  
<http://eprints.whiterose.ac.uk/112977/>

Version: Published Version

---

**Book Section:**

Albarella, U. [orcid.org/0000-0001-5092-0532](https://orcid.org/0000-0001-5092-0532) (2003) *Animal bone*. In: Germany, M., (ed.) *Excavations at Great Holts Farm, Boreham, Essex, 1992-1994*. East Anglian Archaeology 105 . Oxbow Books , pp. 193-200.

---

**Reuse**

Unless indicated otherwise, fulltext items are protected by copyright with all rights reserved. The copyright exception in section 29 of the Copyright, Designs and Patents Act 1988 allows the making of a single copy solely for the purpose of non-commercial research or private study within the limits of fair dealing. The publisher or other rights-holder may allow further reproduction and re-use of this version - refer to the White Rose Research Online record for this item. Where records identify the publisher as the copyright holder, users can verify any specific terms of use on the publisher's website.

**Takedown**

If you consider content in White Rose Research Online to be in breach of UK law, please notify us by emailing [eprints@whiterose.ac.uk](mailto:eprints@whiterose.ac.uk) including the URL of the record and the reason for the withdrawal request.



[eprints@whiterose.ac.uk](mailto:eprints@whiterose.ac.uk)  
<https://eprints.whiterose.ac.uk/>

# **Excavations at Great Holts Farm, Boreham, Essex, 1992–94**

**by Mark Germany**

with contributions by

Umberto Albarella, Nigel Brown, Richard  
Darrah, Brenda Dickinson, Thomas Finney,  
Diana Friendship-Taylor, Alison Locker,  
Graham Lott, Hilary Major, Scott Martin,  
Hazel Martingell, Simon Mays, Peter  
Murphy, Katherine Reidy, Mark Robinson,  
John Shepherd, Sasha Smith, R. Stevenson,  
Wendy Toomey, Sue Tyler, Ros Tyrrell,  
Helen Walker, David Williams and  
Patricia E.J. Wiltshire

illustrations by

Iain Bell, Mark Germany, Hazel Martingell,  
Stewart McNeil and Nick Nethercoat

**East Anglian Archaeology**  
Report No. 105, 2003

**Heritage Conservation**  
Essex County Council

# Part 4. Zoological Evidence

## I. Human bone

by S. Mays

Fourteen cremations were discovered but only the bone from three of them, 43, 122 and 185, was analysed; the bone from the remaining eleven was either undatable or too sparse and fragmentary for study. All three cremations had been heavily truncated by ploughing and this limited the amount of data which could be obtained from them. Nevertheless, there were some points of interest worth recording.

An adult corpse yields about 2kg of bone (Trotter and Hixon 1974). The Great Holts Farm burials are all very incomplete, probably in the main reflecting plough damage.

In each burial the bone was white in colour. According to Shipman *et al.* (1984) this suggests a firing temperature of above c. 940°C. A few additional fragments of unburnt bone were found in context 5060.

Mean fragment size was about 7–10 mm in each burial. The small size of the fragments meant that few could be identified to skeletal element.

Contexts 5332 and 5211 contained some animal bone. In 5332 there were only a few fragments of animal bone, none of which were identifiable to species. In 5211 most of the bone fragments which were identifiable were animal bone rather than human, only a few identifiable human fragments were present. The animal bone from this context which could be identified to species and skeletal element all came from the forelimb of a cow (carpals and metacarpal).

Animal bone fragments are quite frequent findings from cremation burials during Romano-British and other periods when cremation was practised. In such instances the question arises as to whether the animal fragments represent deliberate burning of animal remains with the corpse or whether they are pieces of bone lying around in the pyre area which were inadvertently burnt and collected with the human remains. The few fragments in context 5332 may well represent inadvertent inclusions, but the bones from 5211 must surely represent deliberate offering(s). The animal remains from 5211 to some extent recall those found in a Romano-British cremation from Brougham, Cumbria, where some bone fragments from the rear leg of a horse were found with an adult male (Mays *nd*).

Context	Cremation	Phase	Age	Sex	Weight of bone (grams)
5332	185	II.3	Adult	Unknown	204*
5211	122	II.3	Adult	Unknown	137
5060	43	II.3	Adult	Unknown	50

\* the bone from this burial was poorly sorted, so the weight includes significant extraneous material (soil and stones)

Table 62 Cremated bone

## II. Animal bone

by U. Albarella

### Summary

A small assemblage of animal bones was recovered mainly from late 3rd/4th-century AD contexts. The majority of the bones are in excellent condition and derive from the waterlogged conditions of phase II.2 well 567. Beef was the most commonly eaten meat, but a variety of other resources including some wild animals, were also exploited. The size of cattle was very large and might indicate that these animals were recent imports from the continent. The simultaneous presence of sparrowhawk and thrush bones may represent early evidence of hawking, although the use of the raptor as a decoy is perhaps more likely. The evidence from the mammal and bird bones appears to corroborate the interpretation, derived from the study of the plant remains and fish bones, of a relatively affluent life-style and overseas contacts for the Great Holts Farm inhabitants.

### Methods

Animal bones from most contexts were hand-collected. Small samples were taken and wet-sieved (mesh size 0.5mm) from a number of 'dry' contexts. These samples were mainly aimed at the recovery of plant remains, and produced no animal bones. This is probably due to the acidic conditions of the soil.

Due to the instability of the surrounding soil, the waterlogged fills from the bottom of the well had to be removed mechanically in blocks. Samples from these blocks were taken and water-sieved through a 0.5mm mesh. These produced quite a few bones, mainly of birds and fishes (Table 64).

The mammal bones were recorded following a modified version of the method described in Davis (1992) and Albarella and Davis (1994). In brief, all teeth (lower and upper) and a restricted suite of parts of the postcranial skeleton were recorded and used in counts. These are: skull (zygomaticus), scapula (glenoid articulation), distal humerus, distal radius, proximal ulna, carpal 2–3, distal metacarpal, pelvis (ischial part of acetabulum), distal femur, distal tibia, calcaneum (sustentaculum), lateral part of the astragalus, naviculo-cuboid, distal metatarsal and proximal phalanges (1, 2 and 3). At least 50% of a given part had to be present for it to be counted.

For birds the following were always recorded: scapula (articular end), proximal coracoid, distal humerus, proximal ulna, proximal carpometacarpus, distal femur, distal tibiotarsus, distal tarsometatarsus.

Horncores with a complete transverse section and 'non-countable' elements of particular interest were recorded, but not included in the counts.

Wear stages were recorded for all P4s and dP4s as well as for the lower molars of cattle, caprines and pig, both isolated and in mandibles. Tooth wear stages follow Grant (1982) for cattle and pig and Payne (1973, 1987) for caprines.

Measurements are listed in the archive. These in general follow von den Driesch (1976). All pig measurements follow Payne and Bull (1988). Humerus HTC and BT and tibia Bd measurements were taken for all species as suggested by Payne and Bull (1988) for pigs.

### Provenance and preservation

All animal bones derive either from fills of pits and ditches or from well 567 (Table 63). The bones from pits and ditches were moderately well preserved, whereas the bones from the well were generally in excellent condition, due to the waterlogged environment. However, a few cattle metapodials from the well (context 6459) had very eroded surfaces, which suggest that they had been subject to aerobic conditions for some time, and therefore the backfilling of the well does not represent a single event. Context 6459 is at the top of the sequence of waterlogged levels located at the bottom of the well (Fig. 33) and may thus represent the top level of the initial backfilling. Unfortunately, we do not know the condition of the bones above, because part of the well contents was removed by machine.

A few bones had been gnawed by carnivores, although this condition was not particularly common. No gnawing marks were recognised on the bones from the well.

The bones from the well were probably in a primary deposit, as were those from context 6082 in bath-house 414, as suggested by the presence of a pig astragalus and calcaneum in articulation.

The bone condition, the context, and the small quantity of material from other phases suggest that there is no significant residual or intrusive material in the late Roman assemblage.

### Overview of the bone assemblage

Cattle is by far the most common species (Table 63), as is typical of sites of full Roman tradition (see King 1984, but also table 6 in Robinson and Wilson 1987). Due to the lack of 'whole earth' samples, we cannot establish to what extent this is due to a recovery bias, but it seems improbable that better recovery could have significantly altered the frequencies of the main species.

The assemblage from the late Roman well seems to be related to some special activities and can hardly be used for establishing the relative economic importance of the different animals. The hand-collected assemblage from the well is mainly represented by elements of cattle skull and feet (Table 65). Most metapodials were complete. Cut marks, almost certainly due to skinning, were found on carpals, metapodials and phalanges (Plates VI and VII).

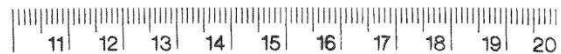
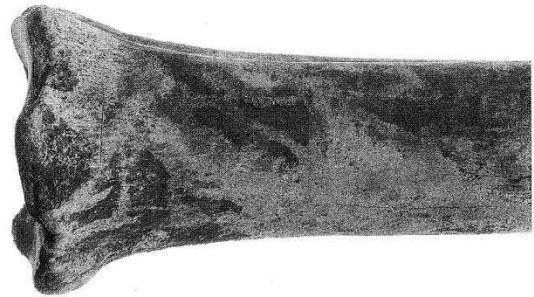


Plate VI Cattle metatarsal with cut mark, probably due to skinning

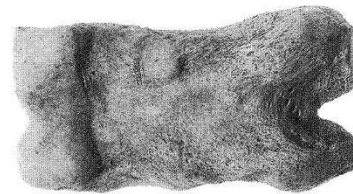


Plate VII Cattle 1st phalanx with cut marks, probably due to skinning

	Early Roman	Late Roman (3rd/4th cent. AD)		Medieval	Total	
	(1st/2nd cent.)	Well 567	Other contexts			total
Cattle ( <i>Bos taurus</i> )	6	64	28	92	3	101
Caprine ( <i>Ovis/Capra</i> )	-	2	6	8	1	9
(sheep ( <i>Ovis aries</i> ))		(1)	(-)	(1)	(1)	(2)
(goat ( <i>Capra hircus</i> ))		(-)	(-)	(-)	(-)	(-)
Pig ( <i>Sus scrofa</i> )	1	1	5	6	-	7
Equid ( <i>Equus</i> sp.)	-	-	5	5	1	6
Dog ( <i>Canis familiaris</i> )	-	-	-	-	2	2
Cat ( <i>Felis catus</i> )	-	-	1	1	-	1
Red deer ( <i>Cervus elaphus</i> )	-	+	1	1	-	1
Hare ( <i>Lepus</i> sp.)	-	1	1	2	-	2
Chicken/pheasant/guinea fowl ( <i>Gallus/Phasianus/Numida</i> )	-	1	2	3	-	3
Goose (Anserinae)	-	2	-	2	-	2
Bird (Aves)	-	-	-	-	2	2
<b>Total</b>	<b>7</b>	<b>71</b>	<b>49</b>	<b>120</b>	<b>9</b>	<b>136</b>

Table 63 Number of identified specimens (NISP) by taxon, at Great Holts Farm (hand-collected assemblage). + = present, but not 'countable' (Davis 1992). Figures in brackets for sheep and goat are included in the total for caprine

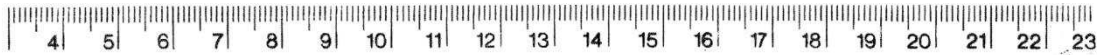


Plate VIII Sawn antler tine

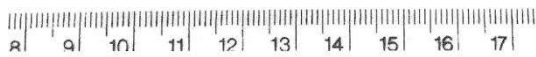


Plate IX Arthropathic cattle metatarsal

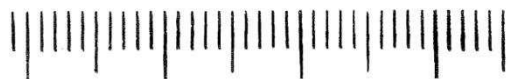
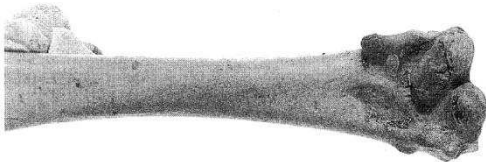


Plate X Woodcock humerus with cut marks (mm scale)

This sort of deposit can be associated with primary butchery wastes or tanning wastes (see Schmid 1972 and Serjeantson 1989). The lack of horncores, generally associated with these sort of deposits, may be due to the fact that they were used elsewhere for making tools. Evidence of horn and antler working has indeed been found in other parts of the site. Five cattle horncores, three chopped from the skull, and two antler fragments, one sawn at the base (Plate VIII), were recovered from the late Roman period. The sawn antler is the only one to have been found in the well. The tip of this antler is worn, probably due to some kind of use.

The cattle bones from the well derive from mature animals, some of them with severe arthropathies (Plate IX), a condition generally associated with working stress generated by ploughing or by pulling carts (Jewell 1963, Bartosiewicz *et al.* 1993). However, the absence of similar conditions in cattle — probably also used for traction — from other sites suggests that the nature of the terrain may also have been a factor.

The metric data are listed in the archive. These can be useful as part of a more general database of metric data from Roman sites. The eleven complete cattle metapodials are particularly valuable in this respect and are discussed in the next section.

Several species of bird were found, mainly in the sieved samples from the well (Tables 63 and 64). Most of the duck and goose bones are relatively small and may derive from wild animals. Woodcock and plover provide tasty meat, and, when found in sites of later periods, tend to be associated with people of high status (*e.g.* Maltby 1982; Albarella and Davis 1996). The fact that they were eaten by the inhabitants of Great Holts Farm is demonstrated by the presence of cut marks on one of the woodcock bones (Plate X). Woodcock remains have been found in several other Roman sites and are particularly common at Exeter (Maltby 1979). The intriguing presence of both sparrowhawk and thrushes is discussed below. This variety of birds, together with the presence of wild

	6459 (V= c. 60l)	6461 (V= c. 30l)	6462 (V= c. 60l)	6463 (V= c. 105l)	6465 (V= c. 15l)	Total
Cattle ( <i>Bos taurus</i> )	–	–	–	1	–	1
Hare ( <i>Lepus</i> sp.)	1	–	–	–	–	1
Chicken/Pheasant/guinea fowl ( <i>Gallus/Phasianus/Numida</i> )	16	–	1	–	–	17
Goose ( <i>Anserinae</i> )	4	–	–	2	–	6
Duck ( <i>Anatinae</i> )	3	2	2	–	–	7
Sparrowhawk ( <i>Accipter nisus</i> )	–	–	–	1	–	1
Woodcock ( <i>Scolopax rusticola</i> )	11	1	9	1	–	22
Golden/Grey Plover ( <i>Pluvialis</i> sp.)	1	–	–	–	–	1
Thrush ( <i>Turdus</i> cf. <i>merula</i> )	33	4	33	56	5	131
Total	69	7	45	61	5	187
Fish	5	3	34	62	–	104
<b>Grand total</b>	<b>74</b>	<b>10</b>	<b>79</b>	<b>123</b>	<b>5</b>	<b>291</b>

Table 64 Number of identified specimens (NISP) by taxon from phase II.2 well 567 (sieved collection). 6459–6465 are the different contexts at the bottom of the well. ‘V’ is the volume of the sample sieved from that context

mammals such as red deer and hare (Table 63) appears to corroborate the interpretation derived from the plant remains of a relatively affluent life-style at Great Holts Farm.

#### The cattle metapodials

The size and shape of the eleven cattle metapodials found in the fills at the bottom of phase II.2 well 567 are compared to those from other Roman sites in eastern England (Figs 119–120).

It is clear that both the metacarpals and metatarsals at Great Holts Farm are from very large animals. The metatarsals are particularly massive (Fig. 119), and this can only be marginally due to their abnormally splayed out distal ends.

The difference in size between the Great Holts Farm animals and those from other sites is very marked (for both lengths and distal widths of metacarpals and metatarsals  $p < 0.01$  according to a two-tailed Student’s t-test).

Though larger, these specimens are not much more robust than those from other sites (Fig. 120). The metacarpals from three Roman sites considered here (Great Holts Farm, Colchester, and Lincoln), seem to cluster in two groups (Fig. 120 top). It is tempting to suggest that the specimens in the ‘more gracile’ group, which are more numerous, belong to cows and the more robust ones to oxen (it is unlikely that such a high number of bulls could be kept on site). However, a clear shape difference between females and castrates only occurs in some cattle breeds (see Fock 1966; Albarella 1997). Ox metapodials can appear more female-like or male-like according to their breeds and, presumably, to the age of castration. Furthermore, difference in shape between different breeds or populations can be even larger than between different sexes. However, when this is the case, the difference is generally more pronounced in metatarsals than in metacarpals (Albarella 1997), the former being less sexually dimorphic (Grigson 1982; Higham 1969; Howard 1963). In the case of the Roman sites considered here the clustering can be detected in the distribution of the metacarpals (Fig. 120 top), but not of the metatarsals (Fig. 120 bottom) and it is therefore more probably due to a sex difference than to the contemporary presence of two different breeds.

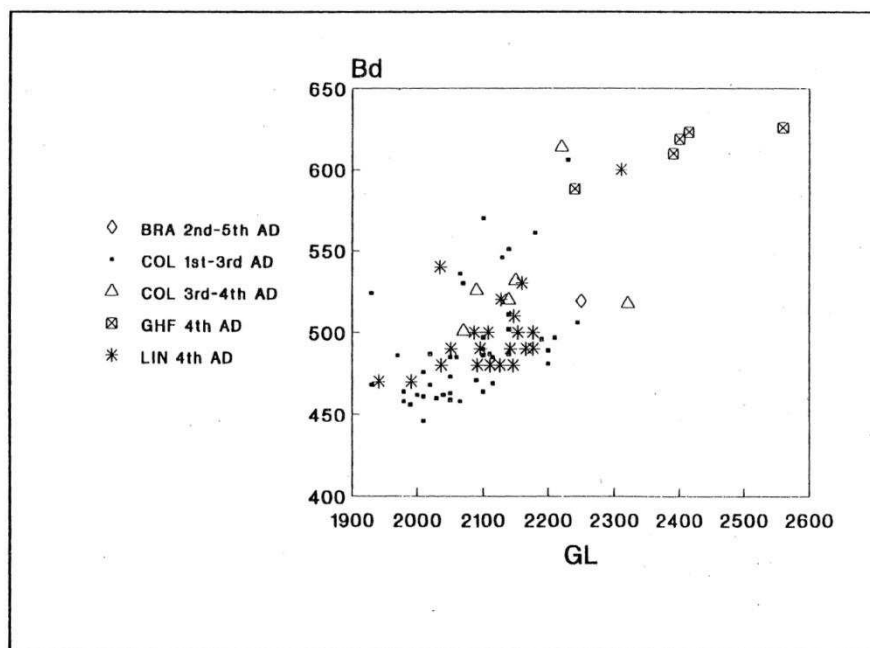
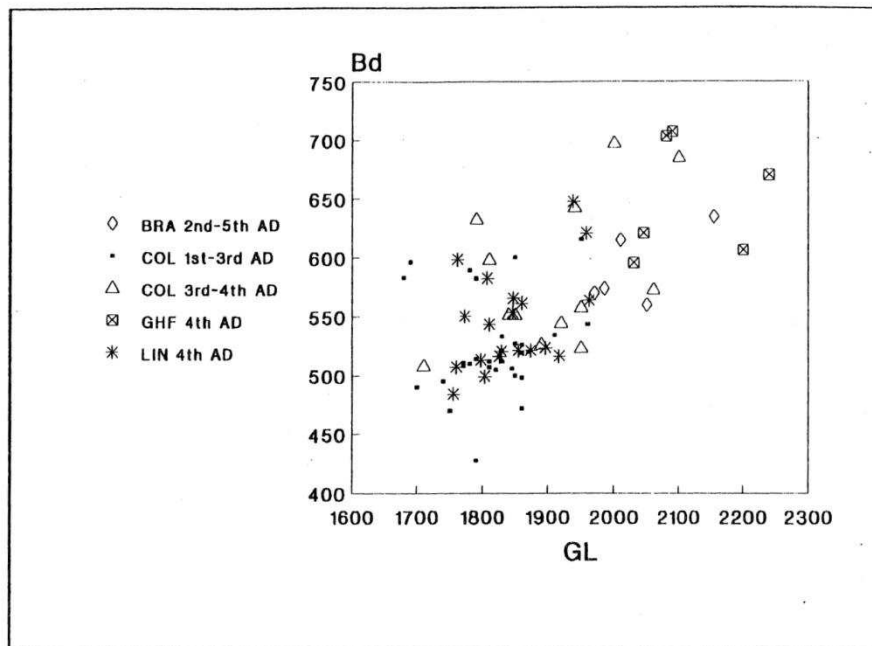
	6459	6460	6462	6463	Total
Cranium	2	–	–	1	3
Teeth (max. & mand.)	8	1	6	1	16
Radius	–	–	1	–	1
Tibia	–	1	–	–	1
Carpal	–	–	2	–	2
Calcaneus	1	–	–	–	1
Metacarpal	6	–	1	–	7
Metatarsal	9	–	1	–	10
Phalanges (1, 2 & 3)	14	–	9	–	23
<b>Total</b>	<b>40</b>	<b>2</b>	<b>20</b>	<b>2</b>	<b>64</b>

Table 65 Representation of cattle body parts by number of identified specimens (NISP) from phase II.2 well 567 (hand collected assemblage). 6459–6463 are the different contexts at the bottom of the well

The assumption that the metapodials from Great Holts Farm derive from both females and castrates is important for our interpretation of their large size. Indeed this hypothesis rules out the possibility that the large size of the Great Holts Farm animals is due to the fact that they were all oxen, whereas most of the bones from the other sites are from females. My suggestion is that the Great Holts Farm animals rather belong to a genuinely larger and perhaps different type of cattle.

In his study of the Dutch Eastern River area Lauwerier (1988) has argued that the cattle found in Romanised sites reflect the import and subsequent improvement of the stock through interbreeding. In one site, Druten (3rd century AD), there is contemporary presence of two size groups, which Lauwerier interprets as being derived from two different populations: a larger, imported type and a smaller, native one. The 4th-century cattle from another site, Nijmegen, are intermediate in size between the two Druten Groups and might be the consequence of subsequent interbreeding. No large animals were found in Dutch regions outside the Roman empire.

A remarkable difference in the size of cattle from *Germania Romana* and *Germania Libera* was noted by Teichert (1984). The cattle from the Roman provinces were definitely larger, although a few large cattle were also



Size of cattle metacarpals (top) and metatarsals (bottom) at Great Holts Farm and other Roman sites. BRA = Braintree (Smoothy 1993), COL = Colchester (Luff 1993), GHF = Great Holts Farm, LIN = Lincoln (Dobney *et al.* 1996). GL = greatest length, Bd = distal breadth, SD = smallest breadth of diaphysis. Measurements in tenths of mm.

Figure 119 Size of cattle metacarpals (top) and metatarsals (bottom)

found in the area occupied by the Germans. This suggests the existence of some trade between the Germans and the Romans. With the retreat of the Romans, large cattle were no longer to be found north of the Alps (Teichert 1984).

Dobney *et al.* (1996) have noticed an increase in size of the Lincoln cattle from the 1st/2nd century to the 3rd. In the 4th century there is greater variation, but the very large animals found in the 3rd century are no longer present. Although caution is necessary, due to the very small number of measurements from the 3rd century, Dobney *et al.* (1996) also raise the possibility that the largest specimens may be recent Roman imports, and that later animals may represent the product of interbreeding between local and imported stock.

Reviewing cattle size from European archaeological sites, Audoin-Rouzeau (1991) also suggests that the large Roman cattle found in northern Europe were the product of importation rather than local improvement.

Using the average multiplying factor for males and females recommended by von den Driesch and Boessneck (1974), the height of cattle from Great Holts Farm has been calculated as being *c.* 130cm. This makes them similar in size to the larger group from 3rd-century Druten and in the upper range of the large cattle from *Germania Romana*. They are also larger than the largest 3rd-century cattle from Lincoln. Few Roman sites have similarly large cattle (see Audoin-Rouzeau 1991) and, interestingly, some of them are from Italy (see also King 1994).

On the basis of the evidence discussed above my suggestion is that the cattle from Great Holts may represent imported rather than native stock and, due to their very large size, recent imports, which have not interbred with local populations.

### Sparrowhawk and thrushes

The distal part of a sparrowhawk tarsometatarsus (context 6463) and many thrush post-cranial bones were collected from the waterlogged samples from the bottom of the well (Table 64; Fig. 33).

Thrush bones have been identified as such (*Turdus* sp.), rather than starling (*Sturnus vulgaris*) on the basis of the morphological criteria suggested by Stewart (1992), in particular those which apply to the proximal carpometacarpus. The size of the bones is also more compatible with *Turdus* rather than *Sturnus*. Large size overlap occurs between the different *Turdus* species (Stewart 1992) and therefore specific identification of these bones has not been possible. However, the bones are of a medium-large size and they certainly do not belong to the rather small redwing (*Turdus iliacus*). When compared with the metric data presented in Stewart (1992), they seem to fit particularly well with the distribution of the blackbird (*Turdus merula*), and are quite consistently larger than any of the song thrush (*Turdus philomelos*) bones, but partly overlap with the larger fieldfare (*Turdus pilaris*) and mistle thrush (*Turdus viscivorus*).

The thrush bones are derived from various parts of the body, but no skulls were found. This might be due to the fragmentation of these fragile elements, although a genuine lack of heads, probably connected to their early separation and discard, cannot be excluded.

Sparrowhawk bones have only occasionally been found on Roman sites in Britain (Parker 1988), but they are much more common in later periods. In a number of medieval sites they are found as complete skeletons, and

they are generally interpreted as tame birds used for hawking (Mulkeen and O'Connor 1997). Sparrowhawks are unlikely birds to be found in archaeological sites for any other reasons, as they do not scavenge, and are too small and tough to make valuable meat or feathers. At Great Holts Farm there is only one bone rather than the whole skeleton, though it is possible that the rest of the body was in fact in the well but was not collected.

Thrushes occur much more commonly in Roman sites (Parker 1988), and they are generally interpreted as eaten birds (Coy 1987).

Turdids are among the birds most commonly caught by the wild sparrowhawk, and much more so by the trained bird, for which they can represent as many as 90% of the prey (Prummel 1997). It is therefore tempting to correlate the presence of sparrowhawks and thrushes and to suggest that the raptor was a tamed bird kept to catch passerines and possibly other birds, such as woodcocks. However, we do not have evidence that hawking was practised in Europe before the 4th–5th century (Prummel 1997) and in Britain until mid Saxon times (Parker 1988). Due to the almost total absence of any pictorial or literary evidence, it is obvious that the Romans were not commonly engaged in hawking.

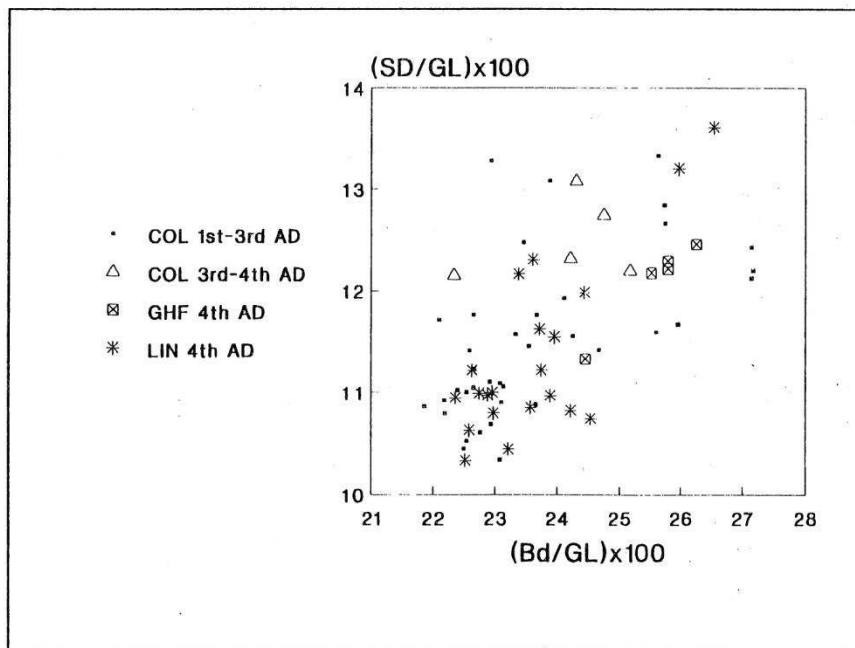
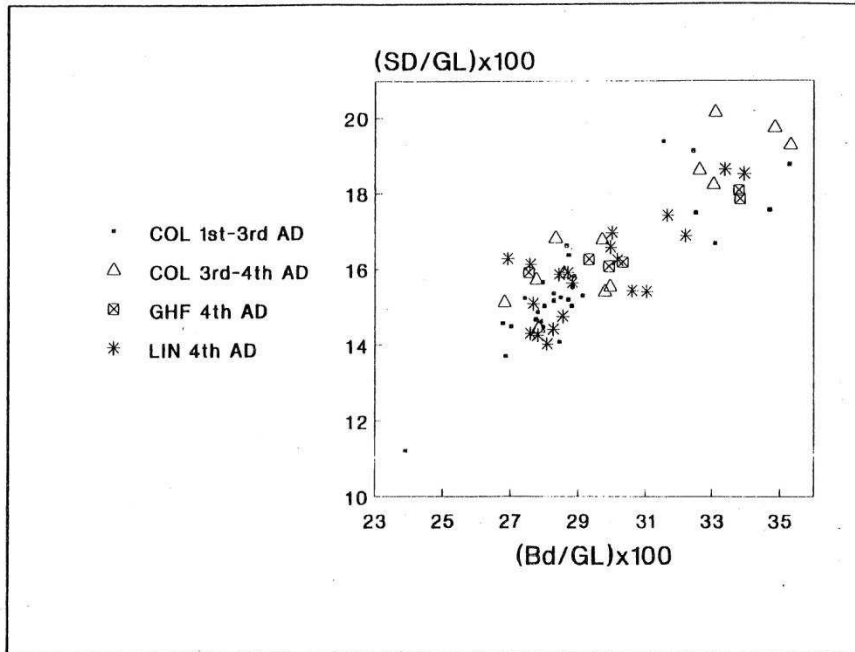
Nevertheless, falconry is very ancient; it was practised as early as the 8th century BC by the Assyrians (Epstein 1943). Although Romans were obviously not keen falconers, it is unlikely they were totally unaware of this practice. There is a passage in an epigram of Martial (40–102 AD), in which there is quite definite reference to hawking. Epstein (1943) suggests that 'it is just possible that (...) a few Roman gentlemen, who had learned it in one of Rome's Asiatic or African provinces, practised this sport'.

The well 567 at Great Holts Farm was an integral part of building 416 and was probably covered by a portico. Its indoor location is also confirmed by the absence of weed seeds deriving from the local vegetation and by the presence of insects of indoor habitats. It is assumed that the well deposit is represented by material intentionally dumped in the well, derived from human activities.

We can therefore rule out the possibility that the bird bones do not have an anthropogenic origin, a hypothesis which had to be taken into account in view of the absence of cut marks on the thrush bones. Since both the sparrowhawk and the thrushes are the product of human activities, the possibility that they represent an early case of hawking must be raised. As discussed above there are hardly any other reasons why a sparrowhawk should be kept or killed and its association with such a high number of thrush bones could be significant. Another possibility is that the sparrowhawk was used as a decoy to attract and catch small birds, as suggested by Reilly (1985) for his remains of hobby (*Falco subbuteo*) bones from the site of Settefinestre in Italy and as depicted in the 'Small Hunt' mosaic at Piazza Armerina in Sicily (4th century AD) (Parker 1988, Reilly 1985).

Whatever the explanation, it is not here suggested that the date of the introduction of hawking in Europe should be moved back by one or two centuries. The occasional case of falconry may have occurred anywhere in the Roman Empire and, since it was not part of a widespread phenomenon, may have escaped the attention of the pictorial and literary sources of the time. Whether interpreted as an early case of hawking or as the use of





Shape of cattle metacarpals (top) and metatarsals (bottom). COL = Colchester (Luff 1993), GHF = Great Holts Farm, LIN = Lincoln (Dobney *et al.* 1996). GL = greatest length, Bd = distal breadth, SD = smallest breadth of diaphysis. These diagrams are size independent: the higher the value the more robust is the specimen.

Figure 120 Shape of cattle metacarpals (top) and metatarsals (bottom)

raptors as decoys, the presence of the sparrowhawk possibly reinforces the overseas connections and the upper class life-style of the inhabitants at Great Holts Farm.

### Conclusions

The small assemblage of mammal and bird bones from Great Holts Farm provides an interesting insight into the life and economy of a Roman farmstead in Essex. As is common for Roman sites in the north-western Provinces of Europe, beef was the most commonly eaten meat. A variety of other resources, including wild mammals, birds and fishes attest to the prosperous life-style of the Great Holts Farm inhabitants. This is somewhat surprising, due to the rather unpretentious flooring of the building which initially indicated that we were dealing with a low status site.

The assumed wealth of the site is confirmed by the presence of a number of 'exotic' plants, such as Mediterranean stone-pine (*Pinus pinea*), sweet chestnut (*Castanea sativa*), walnut (*Juglans regia*), grape (*Vitis vinifera*) and olive (*Olea europaea*). Of these species only the olive was definitely imported, but all others, although they can grow in Britain, are typical Mediterranean plants. The presence of the Spanish mackerel (*Scomber scombrus*), and possibly of the scad (*Trachurus trachurus*) among the fish remains also suggests imported goods, perhaps in the form of stored fish.

The evidence from the mammal and bird bones also points to overseas contacts, although no exotic species were found. The first piece of evidence is represented by the size of the cattle remains. This is very large and suggests the presence of non-native, recently imported livestock. The second piece of evidence is the simultaneous presence of a sparrowhawk tarsometatarsus and a large number of thrush bones. This is tentatively interpreted as an early indication of hawking or, alternatively, of the use of the raptor as a decoy. Both these would suggest a connection between the Great Holts Farm inhabitants and the southern Provinces or Rome itself.

### III. Fish bone

by A. Locker

A small assemblage of fish bones was recovered from four contexts within late 3rd/early 4th-century well 567. Samples from the contexts were sieved through a 0.5mm mesh and the following species were identified: Eel (*Anguilla anguilla*), Herring (*Clupea harengus*), Pike (*Esox lucius*), Scad (*Trachurus trachurus*), Scombridae and plaice/flounder (*Pleuronectes platessa/Platichthys flesus*). These are tabulated in Table 66, unidentified vertebrae have been included, but not indeterminate fragments.

### Discussion

The site is 13km from the Blackwater Estuary, and of the species identified only pike and eel are representative of local river fishing. Flatfishes could have been caught on lines or in shoreline traps along the local coastline. Herring would have been seasonally available; the annual migration of separate populations could have given rise to a winter fishery in November and December off the Essex coastline, if current migrations have any relevance to the Roman period (Cushing 1982, 61).

	6450	6461	6462	6463	Total
Eel	1sk	0	0	0	1
Herring	0	0	0	1sk	
	2v	0	17v	19v	39
Pike	3v	0	0	3v	6
Scad	0	0	6v	0	6
Scombridae	0	0	0	3v	3
Plaice/flounder	1sk	0	0	4sk	
	9v	0	3v	14v	31
Unidentified	0	3v	6v	0	9
<b>Total</b>	<b>16</b>	<b>3</b>	<b>32</b>	<b>44</b>	<b>95</b>

Table 66 Fish bones from phase II.2 well 567

The scad vertebrae are from a mature fish, this pelagic species would have been caught offshore, although found in the North Sea it has not been regarded as a prime food fish in Britain, but it is valued in the Mediterranean (Wheeler 1978, 246). Together with the scombrid precaudal vertebrae, which are closer to the Spanish mackerel (*Scomber japonicus*) than the more northerly distributed mackerel (*Scomber scombrus*), it is feasible that the scad and ?Spanish mackerel remains may represent stored fish imported from the Mediterranean, possibly in amphorae. The well also contained some seeds of imported species such as the olive and Mediterranean stone pine and it appears that a variety of imported foods were brought to the site.

Spanish mackerel vertebrae were also identified from 1st/2nd-century deposits at Gorhambury villa, Herts (Locker 1990, 212) and also from six heads in a 1st-century amphorae from Winchester Palace, London, on which the inscription described the contents as *liquamen* and the property of Lucius Tettius Africanus from Antipolis, modern Antibes (Yule 1989).

A larger assemblage of Roman fish bones combined from a number of sites in Colchester contained a high proportion of indeterminate material and many more species, often represented by a single bone. In contrast to the Great Holts Farm assemblage the species all represented local exploitation of rivers and the North Sea (Locker 1992, 278 and Locker 1987) and there was no evidence of wealth through imports of luxury items.

Despite the small size of the fish assemblage from the well, Great Holts Farm has provided more valuable data regarding the range of possible imports from the Mediterranean during the Roman period.

### IV. Marine mollusca

by K. Reidy

The shells were washed and counted, the left and right valves of the oyster shell were separated and then divided into those which could be measured (whole valves) and those which could not be measured (fragmented valves). A minimum number of individuals (MNI) was calculated by adding together the totals of measurable and unmeasurable valves for both left and right valves. The highest of the two was taken to be the MNI. There were few other species present and their presence was merely noted.

## Bibliography

- Adam, J-P. 1984 *La Construction Romaine* (Paris)
- Adkins, L. and Needham, S. 1985 'New research on a Late Bronze Age enclosure at Queen Mary's Hospital, Carshalton', *Surrey Archaeol. Collect.* **76**, 11-50
- Albarella, U. 1997 'Shape variation of cattle metapodials: age, sex or breed? Some examples from medieval and post-medieval sites', *Proc. 7th ICAZ Conference Konstanz*
- Albarella, U. and Davis, S. 1994 *The Saxon and medieval animal bones excavated 1985-1989 from West Cotton, Northamptonshire*, Ancient Monuments Laboratory Report 17/92 (London)
- Albarella, U. and Davis, S. 1996 'Mammals and birds from Launceston Castle, Cornwall: decline in status and the rise of agriculture', *Circaea* **12**(1), 1996 for 1994, 1-156
- Aldsworth, F. and Rudling, D. 1996 'Excavations at Bignor Roman villa, West Sussex 1985-90', *Sussex Archaeol. Collect.* **133**, 103-88
- Allason-Jones, L. 1993 'Small finds' in Casey, P.J. and Davies, J.L. *Excavations at Segontium (Caernarfon) Roman Fort 1975-1979*, Counc. Brit. Archaeol. Res. Rep. **90**, 165-210
- Allen, R.H. and Sturdy, R.G. 1980 'The environmental background', in Buckley, D.G. (ed.) *Archaeology in Essex to AD1500*, Counc. Brit. Archaeol. Rep. **34**, 1-7
- Allen, T., Darvill, T., Green, S. and Jones, M. 1993 *Excavations at Roughground Farm, Lechlade, Gloucestershire: a prehistoric and Roman landscape*, Thames Valley Landscapes: the Cotswold Water Park, Vol. 1 (Oxford Archaeological Unit)
- Anderson S. Th. 1979 *Identification of wild grasses and cereal pollen*, Danmarks Geologiske Undersogelse Årborg 1978, 69-92
- Andrews, G. 1985 'The coarse wares', in Hinchliffe, J. and Sparey-Green, C., *Excavations at Brancaster, 1974 and 1977*, E. Anglian Archaeol. **23**, 82-116
- Arthur, P. and Williams, D.F. 1992 'Campanian wine, Roman Britain and the third century AD', *J. Roman Archaeol.* **5**, 250-60
- Atkinson, M. 1995 'A Late Bronze Age enclosure at Broomfield, Chelmsford', *Essex Archaeol. Hist.* **26**, 1-23
- Atkinson, M. and Preston, S.J. 1998 'The Late Iron Age and Roman settlement at Elms Farm, Heybridge, Essex, excavations 1993-5: an interim report', *Britannia* **XXIX**, 85-110
- Atkinson, M. and Preston, S. 2001 'Prehistoric settlement and burials at Elms Farm, Heybridge', *Essex Archaeol. Hist.* **32**, 42-74
- Audoin-Rouzeau, F. 1991 *La taille du buf domestique en Europe de l'antiquité aux temps modernes* (Valbonne, CNRS)
- Baillie, M.G.L. 1995 *A slice through time* (Batsford, London)
- Bang, P. 1987 *Collins Guide to Animal Tracks and Signs* (London)
- Barford, P. and Major, H. 1992 'Later Bronze Age loomweights from Essex', *Essex Archaeol. Hist.* **23**, 117-120
- Barrett, J. 1989 'Food, gender and metal: questions of social reproduction', in Sorensen, M. and Thomas, R. (eds.), *The Bronze Age Transition in Europe*, Brit. Archaeol. Rep. Int. Series **59**, 304-320
- Barton, K.J. 1962 'Settlements of the Iron Age and pagan Saxon periods at Linford, Essex', *Trans. Essex Archaeol. Soc.* **3** series 1, 57-104
- Bartosiewicz, L., van Neer, W. and Lentacker, A. 1993 'Metapodial asymmetry in draft cattle', *International J. Osteoarchaeol.* **3**, 69-75
- Bassett, S.R. 1982 *Saffron Walden: excavations and research 1972-80*, Chelmsford Archaeol. Trust. Rep. **2**, Counc. Brit. Archaeol. Rep. **45**, 5-9
- Bedwin, O. 1992 'Early Iron Age settlement at Maldon and the Maldon burh: excavations at Beacon Green 1987', *Essex Archaeol. Hist.* **23**, 10-24
- Bennett, K.D., Whittington G., and Edwards, K.J. 1994 'Recent plant nomenclatural changes and pollen morphology in the British Isles', *Quaternary Newsletter* **73**, 1-6 (Quaternary Research Association)
- Betts, I.M. 1992 'Roman tile from Eccles, Kent, found at Colchester', in Crummy, P. *Excavations at Culver Street, the Gilbert School, and other sites in Colchester 1971-1985*, Colchester Archaeol. Rep. **6**, 259-260
- Betts, I.M. 1998 'The Roman Tile', in Cool, H.E.M. and Philo, C. (eds.), *Roman Castleford, Excavations 1974-85 Vol 1: The small finds*, Yorkshire Archaeol. **4**, 225-232
- Black, E.W. 1995 'Voussoirs and wall-tiles', in Blockley, K., Blockley, M., Blockley, P., Frere, S.S. and Stow, S., *Excavations in Marlowe Car Park and surrounding areas*, Archaeol. Canterbury **V**, 1267-93
- Boardman, S. and Jones, G. 1990 'Experiments on the effects of charring cereal plant components', *J. Archaeol. Sci.* **17**, 1-11
- Boon, G.C. 1972-73 'Roman glassware from Caerwent 1855-1925', *Monmouthshire Antiq.* **3**, 111-23
- Bouchner, M. 1982 *A Field Guide in Colour to Animal Tracks and Traces*, (London)
- Bradley, R., Lobb, S., Richards, J. and Robinson, M. 1980 'Two Late Bronze Age settlements on the Kennet gravels: excavation at Aldermaston Wharf and Knight's Farm, Burghfield, Berkshire' *Proc. Prehist. Soc.* **46**, 217-96
- Briscoe, T. 1983 'Anglo-Saxon pot stamps' in Brown, D., Campbell, J. and Hawkes, S.C. (eds.), *Anglo-Saxon Stud. Archaeol. Hist.* **2**, 1-36
- Bristow, C.R. 1985 *Geology of the Country Around Chelmsford*, (HMSO)
- Brodribb, G. 1979 'A survey of tile from the Roman bath house at Beauport Park, Battle, E. Sussex', *Britannia* **X**, 139-56
- Brodribb, G. 1987 *Roman Brick and Tile* (Gloucester)
- Brown, N. 1988a 'A Late Bronze Age enclosure at Lofts Farm, Essex', *Proc. Prehist. Soc.* **54**, 249-302
- Brown, N. 1988b 'A Late Bronze Age settlement on the Boulder Clay plateau: excavations at Broads Green 1986', *Essex Archaeol. Hist.* **19**, 1-14

- Brown, N. 1992 'Prehistoric pottery', in Bedwin, O. 'Early Iron Age settlement at Maldon and the Maldon burh: excavations at Beacon Green 1987', *Essex Archaeol. Hist.* **23**, 10–24
- Brown, N. 1995a 'Prehistoric pottery', in Atkinson, M., 'A Late Bronze Age enclosure at Broomfield, Chelmsford' *Essex Archaeol. Hist.* **26**, 1–23
- Brown, N. 1995b 'Later Bronze Age and Early to Middle Iron Age pottery', in Wymer, J., and Brown, N., *North Shoebury: Settlement and Economy in South-East Essex 1500 BC–AD 1500*, E. Anglian Archaeol. **75**, 77–87
- Brown, N. 2001 'Prehistoric pottery', in Buckley, D.G., Hedges, J.D. and Brown, N., 'Excavations at Springfield Cursus, Essex', *Proc. Prehist. Soc.* **67**, 101–62
- Brown, N. forthcoming a '1979–85 Prehistoric pottery', in Buckley, D.G., and Hedges, J.D., *Excavations at Springfield Lyons, Essex: I. Prehistoric*, E. Anglian Archaeol.
- Brown, N. forthcoming b 'Prehistoric pottery', in Havis, R. and Brooks, H., *Excavations at Stansted Airport, 1986–91* (2 vols), E. Anglian Archaeol.
- Brown, N. and Lavender, N. 1994 'Late Bronze Age sites at Gt. Baddow, and settlement in the Chelmer Valley, Essex, 1500BC–500BC', *Essex Archaeol. Hist.* **25**, 115–6
- Buck, F.D. 1954 *Coleoptera (Lagriidae to Meloidae)*, Royal Entomological Society Handbook for the Identification of British Insects 5, pt. 9 (London)
- Buckley, D.G. and Hedges, J.D. 1987 *The Bronze Age and Saxon Settlements at Springfield Lyons, Essex: An Interim Report*, Essex County Council Occas. Pap. **5**
- Buckley, D.G. and Hedges, J.D. in prep. *Excavations at Springfield Lyons, Essex: I. Prehistoric*, E. Anglian Archaeol.
- Buckley, D.G., Major, H. and Milton, B. 1988 'Excavation of a possible Neolithic long barrow or mortuary enclosure at Rivenhall, Essex, 1986', *Proc. Prehist. Soc.* **54**, 77–91
- Buckley, D.G. and Major, H. 1995 'Quernstones', in Wymer, J.J. and Brown, N.R., *Excavations at North Shoebury: Settlement and Economy in South-East Essex 1500BC–AD1500*, E. Anglian Archaeol. **75**, 72–73
- Buckley, D.G. and Major, H. 1998a 'The quernstones', in Cool, H.E.M. and Philo, C. (eds.), *Roman Castleford, Excavations 1974–85 Vol 1: The Small Finds*, Yorkshire Archaeol. **4**, 240–47
- Buckley, D.G. and Major, H. 1998b 'The quernstones', in Clarke, C.P. *Excavations South of Chignall Roman Villa, Essex, 1977–81*, E. Anglian Archaeol. **83**, 91–93
- Callaghan, T.V. and Sheffield, E. 1985 '*Pteridium aquilinum*: weed or resource?', *Proc. Royal Soc. Edinburgh* **86B**, 461
- Carter, G.A. 1998 *Excavations at the Orsett 'Cock' Enclosure, Essex, 1976*, E. Anglian Archaeol. **86**, 44
- Carver, M.O.H., Donaghey, S. and Sumpter, A.B. 1978 'Riverside structures and a well in Skeldergate and buildings in Bishophill', *The Archaeology of York: The Colonia 4/1*
- Clark, J.G.D. and Fell, C.I. 1953 'The Early Iron Age site at Mickle Moor Hill, West Harling, Norfolk, and its pottery', *Proc. Prehist. Soc.* **19**, 1–40
- Clarke, C.P. 1998 *Excavations South of Chignall Roman villa, Essex, 1977–81*, E. Anglian Archaeol. **83**
- Clarke, G. 1979 *Pre-Roman and Roman Winchester Part II: The Roman Cemetery at Lankhills*, (Oxford)
- Clarke, G. 1982 'The Roman villa at Woodchester', *Britannia* **13**, 197–228
- Clarke, R. forthcoming *A medieval moated settlement and windmill: excavation at Boreham Airfield, Essex 1996*, E. Anglian Archaeol. Occas. Pap.
- Cleal, R. 1982 'The Late Neolithic in Eastern England', in Bradley, R. and Gardiner, J. (eds), *Neolithic Studies: a Review of Some Current Research*, Brit. Archaeol. Rep. **133**
- Cool, H. and Price, J. 1987 'The glass', in Meates, G.W., *The Roman villa at Lullingstone, Kent: 2, the wall-paintings and finds*, Kent Archaeol. Soc. Monograph, **3**
- Cool, H. and Price, J. 1995 *Roman vessel glass from excavations in Colchester, 1971–85*, Colchester Archaeol. Rep. **8** (Colchester)
- Corley, M.F.V., Crundwell, A.C., Dull, R., Hill, M.O. and Smith, A.J.E. 1981 'Mosses of Europe and the Azores: an annotated list of species, with synonyms from the recent literature', *J. Bryol.* **11** (4), 609–690
- Couchman, C. 1976 'Work undertaken by Essex County Council Archaeology Section, 1974–76', *Essex Archaeol. Hist.* **8**, 160–61
- Cowan, C. 1995 'A possible mansio in Roman Southwark: excavations at 15–23 Southwark Street, 1980–1986', *Trans. London Middlesex Archaeol. Soc.* **43**, 3–192
- Coy, J. 1987 'Non-domestic faunal resources in South-West England', in Balaam, N.D., Levitan, B. and Straker, V. (eds.), *Studies in palaeoeconomy and environment in South-West England*. Brit. Archaeol. Rep. Brit. Ser. **181**, 9–29 (Oxford)
- Cram, L. 1998 'Human and animal foot impressed tiles', in Cool, H.E.M. and Philo, C. (eds.), *Roman Castleford, Excavations 1974–85 Vol 1: The Small Finds*, Yorkshire Archaeol. **4**, 232–8
- Cram, L. and Fulford, M. 1979 'Silchester tile making – the faunal environment', in McWhirr (ed.), *Roman Brick and Tile*, Brit. Archaeol. Rep. Int. Ser. **68**, 201–9
- Crummy, N. 1983 *The Roman small finds from excavations in Colchester 1971–9*, Colchester Archaeol. Rep. **3**
- Cunningham, C.M. 1985 'A typology for post-Roman pottery in Essex', in Cunningham, C.M. and Drury, P.J., *Post-medieval sites and their pottery: Moulsham Street, Chelmsford*, Chelmsford Archaeol. Trust Rep. **5**, Counc. Brit. Archaeol. Res. Rep. **54**, 1–16
- Cushing, D.H. 1982 *Climate and Fisheries* (Academic Press)
- Daniels, R.E. and Eddy, A. 1985 *Handbook of European Sphagna* (Natural Environment Research Council, Institute of Terrestrial Ecology, Huntingdon)
- Dark, K. and Dark, P. 1997 *The Landscape of Roman Britain* (Sutton Publishing)
- Darling, M.J. 1993 *Caister-on-Sea: Excavations by Charles Green 1951–1955*, E. Anglian Archaeol. **60**
- Darrah, R. forthcoming 'Metalwork and wood technology', in Ashwin, T., Gill, D. and Tester, A. (eds.), *Excavations at Scole 1993–1994*, E. Anglian Archaeol.
- Davis, S. 1992 *A rapid method for recording information about mammal bones from archaeological sites*, Ancient Monuments Laboratory Report **71/92** (London)

- Déchelette, J. 1904 *Les Vases céramiques ornés de la Gaule romaine* (Paris)
- Dickinson, B. 1986 'Potters' stamps and signatures on the samian', in Miller, L., Schofield, J. and Rhodes, M. *The Roman Quay at St Magnus House, London*, London Middlesex Archaeol. Soc. Spec. Pap. 8, 186-98
- Dimbleby, G.W. 1985 *The palynology of archaeological sites* (Academic Press, London)
- Dobney, K., Jaques, D. and Irving, B. 1996 *Of butchers and breeds. Report on vertebrate remains from various sites in the City of Lincoln*, Lincoln Archaeol. Stud. 5
- Drury, P.J. 1976 'Braintree: Excavations and Research 1971-76', *Essex Archaeol. Hist.* 8, 1-143
- Drury, P.J. 1978 *Excavations at Little Waltham 1970-71*, Chelmsford Excavation Committee Report 1, Counc. Brit. Archaeol. Res. Rep. 26
- Drury, P.J. 1979 'Excavations at Rawreth, 1968', *Essex Archaeol. Hist.* 9, 20-47
- Drury, P.J. 1988 *The Mansio and other sites in the south-eastern sector of Caesaromagus*, Chelmsford Archaeol. Trust Rep. 31, Counc. Brit. Arch. Res. Rep. 66
- Drury, P.J. and Rodwell, W.J. 1980 'Settlement in the Later Iron Age and Roman periods', in Buckley, D.G. (ed.), *Archaeology in Essex to AD 1500*, Counc. Brit. Archaeol. Res. Rep. 34, 59-75
- Drury, P.J., Rodwell, W.J. Wickenden, N.P. 1982 'Finds from the probable site of a Roman villa at Dawes and Heath, Thundersley, Essex', *Essex Archaeol. Hist.* 13, 66-8
- Drury, P.J. and Wickenden, N.P. 1982 'An Early Anglo-Saxon settlement within the Romano-British Small Town at Heybridge, Essex', *Medieval Archaeol.* 26 1-40
- Duncan-Jones, R.P. 1982 *The Roman Economy* (Cambridge University Press, 2nd edition)
- ECC 1991a *Great Holts Farm, Boreham, Essex: Archaeological Fieldwalking Report* (Essex County Council internal publication)
- ECC 1991b *Site Manual* (Essex County Council internal publication)
- ECC 1992 *Great Holts Farm, Boreham, Essex: Research Design 1992-93*, (Essex County Council internal publication)
- ECC 1994 *Great Holts Farm, Boreham, Essex: Revised Project Design (Phase II)*, (Essex County Council internal publication)
- ECC 1996a *A130 Improvements, Downhouse Farm, West Hanningfield, Essex: Assessment of Phase I excavation* (Essex County Council internal publication)
- ECC 1996b *Great Holts Farm, Boreham, Essex: Assessment Report (Phase II)*, (Essex County Council internal publication)
- Ecclestone, J. and Havis, R. 1996 'Late Iron Age and Roman occupation at Hatfield Peverel: excavations at Sandford Quarry 1994', *Essex Archaeol. Hist.* 27, 13-21
- Edwards, D. 1977 'The air photographs collection of the Norfolk Archaeological Unit: second report', in Wade-Martins, P. (ed.), *E. Anglian Archaeol.* 5, 236
- Edwards, J. 1984 *The Roman Cookery of Apicius* (Hutchinson, London)
- Edwards, K.J. 1989 'The cereal pollen record and early agriculture', in Milles, A., Williams, D. and Gardner, N. (eds.), *The Beginnings of Agriculture*, Symposia of the Association for Environmental Archaeology 8, *Brit. Archaeol. Rep. Int. Ser.* 496, 113-35
- Ellis, P., Evans, J., Hannaford, H., Hughes, G. and Jones, A. 1994 'Excavations in the Wroxeter hinterland 1988-1990: the archaeology of the Shrewsbury bypass', *Shropshire Hist. Archaeol.* 69, 1-119
- Epstein, H.J. 1943 'The origin and earliest history of falconry', *Isis* XXXIV(98), 497-509
- Farrar, R.A.H. 1973 'The techniques and sources of Romano-British Black-Burnished Ware', in Detsicas, A. (ed.), *Current Research in Romano-British Coarse Pottery*, Counc. Brit. Archaeol. Res. Rep. 10, 67-103
- Faulkner, N. 1994 'Later Roman Colchester', *Oxford J. Archaeol.* 13(1), 93-120
- Finney, T. 1996 *The examination of industrial debris from Great Holts Farm, Boreham, Essex*, Ancient Monuments Laboratory Rep. 33/96
- Fitch, J. (ed.) 1996 *A select guide to Essex churches and chapels*, (Paul Watkins, Stamford)
- Fock, J. 1966 *Metrische Untersuchungen an Metapodien einiger Europäischer Rinderrassen*, (Dissertation, University of Munich)
- Fowler, W.W. 1890 *The Coleoptera of the British Islands 4* (London, L. Reeve)
- Fulford, M. 1975 'The pottery', in Cunliffe, B., *Excavations at Portchester Castle, Vol. 1: Roman*, Rep. Res. Comm. Soc. Antiq. London 32, 271-367
- Fulford, M.G. and Bird, J. 1975 'Imported pottery from Germany in Late Roman Britain', *Britannia* 6, 171-81
- Garton, D., and Salisbury, C.R. 1995 'A Romano-British wood-lined well at Wild Goose Cottage, Lound, Nottinghamshire', *Trans. Thorton Soc. Nottinghamshire* XCIX, 15-43
- Gibson, S. in prep. 'The archaeology of the Anglian Water Crossing to Great Horkesley fresh water trunk main', *Essex Archaeol. Hist.*
- Gillam, J. 1976 'Coarse fumed ware in north Britain and beyond', *Glasgow Archaeol. J.* 4 57-80
- Gillam, J. 1979 'Romano-Saxon pottery: an alternative interpretation', in Casey, P.J. (ed.), *The end of Roman Britain*, *Brit. Archaeol. Rep. Brit. Ser.* 71, 103-18
- Gilman, P.J. 1991 'Excavations in Essex 1990', *Essex Archaeol. Hist.* 22, 157
- Gilman, P.J. and Bennett, A. 1991 'Work of the Essex County Council Archaeology Section, 1990', *Essex Archaeol. Hist.* 22, 139
- Going, C.J. 1987 *The Mansio and other sites in the south-eastern sector of Caesaromagus: the Roman pottery*, Counc. Brit. Archaeol. Res. Rep. 62
- Going, C.J. 1992a 'The other pottery', in Wickenden, N.P., *The Temple and other sites in the north-eastern sector of Caesaromagus*, Counc. Brit. Archaeol. Res. Rep. 75, 93-115

- Going, C.J. 1992b 'Economic long waves in the Roman period? A reconnaissance of the Romano-British ceramic evidence', *Oxford J. Archaeol.* **11**(1), 93–117
- Going, C.J. 1993a 'The Roman period', in Clark, A. (ed.), *Excavations at Mucking Volume 1: the site atlas*, English Heritage Archaeol. Rep. 20, 20–1
- Going, C.J. 1993b 'The Roman pottery', in Rodwell, W.J., and Rodwell, K.A., *Rivenhall: Investigations of a Villa, Church and Village, 1950–1977*, Counc. Brit. Archaeol. Res. Rep. **80**, 64–70
- Going, C.J. 1996 'The Roman countryside', in Bedwin, O. (ed.), *The Archaeology of Essex: Proceedings of the Writtle Conference*, 95–107 (Essex County Council, Chelmsford)
- Going, C.J. and Ford, B. 1988 'Romano-British pottery', in Wickenden, N.P., *Excavations at Great Dunmow, Essex; a Romano-British Small Town in the Trinovantian Civitas*, Chelmsford Archaeol. Trust Rep. **7**, E. Anglian Archaeol. **41**, 60–76
- Goodburn, D. 1991 'A Roman timber framed building tradition', *Archaeol. J.* **148**, 190–19
- Goodburn, R. 1981 *Chedworth Roman Villa* (National Trust)
- Grant, A. 1982 'The use of tooth wear as a guide to the age of domestic ungulates', in Wilson, B., Grigson, C. and Payne, S. (eds.), *Ageing and sexing animal bones from archaeological sites*, Brit. Archaeol. Rep. Brit. Ser. **109**, 91–108
- Green, H.J.M. 1982 'The origins and development of cruck construction in Eastern England', in Drury, P.J. (ed.), *Structural reconstruction: approaches to the interpretation of the excavated remains of buildings*, Brit. Archaeol. Rep. Brit. Ser. **110**, 87–99
- Green, J. 1952 'The food of *Typhaea stercorea* (L.) (Col. Mycetophagidae)', *Entomologist's Monthly Magazine* **88**, 62
- Greene, K. 1986 *The Archaeology of the Roman Economy* (Batsford, London)
- Gregory, T. 1991 *Excavations in Thetford, 1980–1982, Fison Way*, E. Anglian Archaeol. **53**
- Gregory, T. 1996 *A Romano-British Farmyard at Weeting, Norfolk*, E. Anglian Archaeol. Occ. Pap. **1**
- Greig, J.R.A. 1988 'The interpretation of some Roman well fills from the midlands of England', in Kuester, H. (ed.) *Der prähistorische Mensch und seine Umwelt*, 367–377 (Konrad Theiss, Stuttgart)
- Grieve, M. 1931 *A Modern Herbal* (Jonathan Cape)
- Grigson, C. 1982 'Sex and age determination of some bones and teeth of domestic cattle: a review of the literature', in Wilson, B., Grigson, C. and Payne, S. (eds.), *Ageing and sexing animal bones from archaeological sites*, Brit. Archaeol. Rep. Brit. Ser. **109**, 7–24 (Oxford)
- Grose, D.F. 1991 'Early Imperial Roman cast glass: the translucent coloured and colourless fine wares', in Newby, M. and Painter, K., *Roman glass: two centuries of art and invention*, Soc. Antiq. London Occas. Pap. **XIII**, 1–18
- Guido, M. 1978 *The glass beads of the prehistoric and Roman periods in Britain and Ireland*, Rep. Res. Comm. Soc. Antiq. London **35**
- Gurney, D. 1985 'The Roman pottery' in Pryor, F., et al. *The Fenland Project, Number 1: Archaeology and Environment in the Lower Welland Valley, Volume 1*, E. Anglian Archaeol. **27**, 121–151
- Gurney, D. 1986 *Settlement, Religion and Industry on the Roman Fen-Edge, Norfolk*, E. Anglian Archaeol. **31**
- Gurney, D. 1995 'The Roman pottery', in Rickett, R., *The Anglo-Saxon Cemetery at Spong Hill, North Elmham, Part VII: the Iron Age, Roman and Early Saxon Settlement*, E. Anglian Archaeol. **73**, 94–126
- Hadman, J. 1978 'Aisled buildings in Roman Britain' in Todd, M. (ed.), *Studies in the Romano-British Villa*, 187–95
- Hall, D. 1996 *The Fenland Project, Number 10: Cambridgeshire Survey, the Isle of Ely and Wisbech*, E. Anglian Archaeol. **79**, 176–77
- Harden, D.B. 1979 'Glass vessels', in Clarke, G. *The Roman cemetery at Lankhills*, Winchester Stud. **3**, pre-Roman and Roman Winchester **2**, 209–20 (Oxford)
- Harden, D.B. and Price, J. 1971 'The glass', in Cunliffe, B., *Excavations at Fishbourne, 1961–1969: Vol. 2 The Finds*, Rep. Res. Comm. Soc. Antiq. London **27** (Leeds)
- Hartley, B.R. 1989 'Samian potters' stamps and decorated ware', in Frere, S.S. and Wilkes, J.J., *Strageath: Excavations within the Roman fort 1973–1986*, Britannia Monogr. Ser. **9**, 212–18
- Hartley, B.R., Pengelly, H. and Dickinson, B. 1994 'Samian ware', in Mahaney, C. (ed.), *Roman Alcester: southern extramural area, 1964–1966*, *Excavations Vol. 1*, Counc. Brit. Archaeol. Res. Rep. **96**, 93–119
- Hartley, K.F. 1995 'The mortaria', in Gurney, D., *The Anglo-Saxon Cemetery at Spong Hill, North Elmham, Part VII: the Iron Age, Roman and Early Saxon Settlement*, E. Anglian Archaeol. **73**, 97–98
- Hartley, K.F. 1998 'The fabrics', in Clarke, C.P., *Excavations South of Chignall Roman Villa, Essex, 1977–81*, E. Anglian Archaeol. **83**, 108–9
- Hattatt, R. 1987 *Brooches of Antiquity* (Oxford)
- Havis, R. 1993 'Roman Braintree: excavations 1984–90', *Essex Archaeol. Hist.* **24**, 22–68
- Havis, R. and Brooks, H. forthcoming *Excavations at Stansted Airport, 1986–91* (2 vols), E. Anglian Archaeol.
- Hawkes, C.F.C and Hull, M.R. 1947 *Camulodunum. First Report on the Excavations at Colchester 1930–1939*, Rep. Res. Comm. Soc. Antiq. London **14**
- Hedges, J.D. and Buckley, D.G. 1981 *Springfield cursus and the cursus problem*, Essex County Council Occas. Pap. **1**
- Helbaek, H. 1964 'The Isca grain, a Roman plant introduction in Britain', *New Phytol.* **3**, 158–164
- Hermet, F. 1934 *La Graufesenque (Condatomago)*, (Paris)
- Hickin, N.E. 1963 *The Woodworm Problem* (London, Hutchinson)
- Higham, C. 1969 'The metrical attributes of two samples of bovine limb bones', *J. Zoology* **157**, 63–74 (London)
- Hillman, G.C. 1981 'Reconstructing crop husbandry practices from charred remains of crops', in Mercer, R. (ed.), *Farming Practice in British Prehistory*, 123–62 (Edinburgh University Press)

- Hinton, H.E. 1940-41 'The Ptinidae of economic importance', *Bull. Entomological Research* 31, 331-81
- Hinton, H.E. 1945 *A monograph of the beetles associated with stored products 1* (London, British Museum: Natural History)
- Hodder, I. 1982 *Excavations at Wendons Ambo, The Archaeology of the M11, vol. 2*
- Horsley, K. and Wallace, C.R. 1998 'The Late Iron Age and Roman pottery', in Wallis, S. and Waughman, M., *Archaeology and Landscape in the Lower Blackwater Valley*, E. Anglian Archaeol. 82, 142-57
- Horsley, K. 1993 'The Roman pottery' in Havis, R., 'Roman Braintree: excavations 1984-90', *Essex Archaeol. Hist.* 24, 31-44
- Howard, M. 1963 'The metrical determination of the metapodials and skulls of cattle', in Mourant, A.E. and Zeuner, F.E. (eds.), *Man and Cattle*, 91-100 (London, Royal Anthropological Institute of Great Britain and Ireland)
- Howe, M.D., Perrin, J.R. and Mackreth, D.F. 1980 *Roman Pottery from the Nene Valley: A Guide*, Peterborough City Museum Occ. Pap. 2
- Huggins, R.M. 1979 'Excavation of a late Roman site at Sewardstone Hamlet, Waltham Holy Cross, Essex, 1968-75', *Essex Archaeol. Hist.* 10 (3rd ser.), 174-188
- Hull, M.R. 1958 *Roman Colchester*, Rep. Res. Comm. Soc. Antiq. London 20
- Hull, M.R. 1963 *The Roman Potter's Kilns of Colchester*, Rep. Res. Comm. Soc. Antiq. London 21
- Hylton, T. and Zeepvat, R.J. 1994 'Objects of copper alloy, silver and gold', in Williams, R.J. and Zeepvat, R.J., *Bancroft: a Late Bronze Age/Iron Age settlement, Roman villa and temple-mausoleum*, Bucks. Archaeol. Soc. Monograph Ser. 7, Volumes I and II
- Isings, C. 1957 *Roman Glass From Dated Finds*, (Groningen)
- Jackson, R. 1985 'The objects of iron', in Bidwell, P.T. *The Roman Fort of Vindolanda*, English Heritage Archaeol. Rep. 1, 131-51
- Jermyn, S.T. 1974 *Flora of Essex* (Fingringhoe)
- Jewell, P. 1963 'Cattle from British archaeological sites', in Mourant A.E. and Zeuner F.E. (eds.), *Man and Cattle*, 80-91 (London, Royal Anthropological Institute of Great Britain and Ireland)
- Johnson, S. 1983 *Burgh Castle, Excavations by Charles Green 1958-61*, E. Anglian Archaeol. 20
- Jones, M.U. and Rodwell, W.J. 1973 'The Romano-British pottery kilns at Mucking', *Essex Archaeol. Hist.* 5 (3rd Ser.), 13-47
- Kay, Q.O.N. 1971 '*Anthemis cotula*', *J. Ecol.* 59, 623-36
- Kenward, H.K. 1975 'The biological and archaeological implications of the beetle *Aglenus brunneus* (Gyllenhal) in ancient faunas', *J. Archaeol. Sci.* 2, 63-9
- Kenward, H.K. 1976 'Further archaeological records of *Aglenus brunneus* (Gyllenhal) in Britain and Ireland, including confirmation of its presence in the Roman period', *J. Archaeol. Sci.* 3, 275-7
- Kenward, H.K. 1982 'Insect communities and death assemblages, past and present', in Hall, A.R. and Kenward, H.K. (eds.), *Environmental Archaeology in the Urban Context*, Counc. Brit. Archaeol. Res. Rep. 43, 71-8
- Kenward, H.K., Hall, A.R. and Jones, A.K.G. 1980 'A tested set of techniques for the extraction of plant and animal macrofossils from waterlogged archaeological deposits', *Sci. Archaeol.* 22, 3-15
- King, A. 1984 'Animal bones and the dietary identity of military and civilian groups in Roman Britain, Germany and Gaul', in Blagg, T. and King, A., *Military and Civilian in Roman Britain*, Brit. Archaeol. Rep. Brit. Ser. 136, 187-217 (Oxford)
- King, A. 1994 'Mammiferi', in Arthur P. (a cura di). *Il complesso archeologico di Carminiello ai Mannesi, Napoli (scavi 1983-84)*, 367-406 (Galatina, Congedo)
- Kloet, G.S. and Hincks, W.D. 1977 *A check list of British insects, 2nd edition (revised) part 3: Coleoptera and Strepsiptera*, Royal Entomological Society Handbook for the Identification of British Insects 11, pt. 3 (London)
- Koch, K. 1989 *Die Käfer Mitteleuropas Ökologie 2* (Krefeld, Goecke and Evers)
- Korber-Grohne, U. 1964 *Bestimmungsschlüssel für subfossile Juncus-Samen und Gramineen-Früchte* (August Lax, Hildeheim)
- Lauwerier, R. 1988 *Animals in Roman Times in the Dutch Eastern River Area* (Amersfoort, ROB)
- Lavender, N.J. 1993 'A *'principia*' at Boreham, near Chelmsford, Essex: excavations 1990', *Essex Archaeol. Hist.* 24, 1-21
- Lavender, N.J. 1996 'A Roman site at the New Source Works, Castle Heddingham: excavations 1992', *Essex Archaeol. Hist.* 27, 22-34
- Lavender, N.J. 1997 'Middle Iron Age and Romano-British settlement at Great Dunmow: excavations at Buildings Farm 1993', *Essex Archaeol. Hist.* 28, 47-92
- Lavender, N.J. 1999 'Bronze Age and medieval sites at the A12 Boreham interchange, Chelmsford: excavations 1993', *Essex Archaeol. Hist.* 30, 1-43
- Leary, R.S. 1995 'Roman pottery', in Wymer, J.J. and Brown, N.R., *Excavations at North Shoebury: Settlement and Economy in South-East Essex 1500BC-AD1500*, E. Anglian Archaeol. 75, 92-100
- Leech, R. 1981 'The excavation of a Romano-British farmstead and cemetery on Bradley Hill, Somerton, Somerset', *Britannia* XII, 177-252
- Lethbridge, T.C. 1951 *A Cemetery at Lackford, Suffolk: Report on the Excavation of a Cemetery of the Pagan Anglo-Saxon Period in 1947*, Cambridge Antiq. Soc. Quarto Publications New Ser. VI
- Liddell, M.D. 1931 'A Roman house at Lodge Farm', *Proc. Hants. Field Club Archaeol. Soc.* 10, 225-36
- Locker, A. 1987 *The Fish Bones from Culver Street, Colchester*, Ancient Monuments Laboratory Rep. 166/87
- Locker, A. 1990 'The fish bones', in Neal, D.S., Wardle, A. and Hunn, J., *Excavation of the Iron Age, Roman and Medieval Settlement at Gorhambury, St Albans*, English Heritage Archaeol. Rep. 2, 212
- Locker, A. 1992 'The fish bones' in Crummy, P., *Excavations at Culver Street, the Gilbert School, and other sites in Colchester 1971-1985*, Colchester Archaeol. Rep. 6, 278-280
- Longworth, I.H. 1971 'The Prehistoric pottery', in Wainwright, G.J., and Longworth, I.H., *Durrington Walls: Excavations*

- 1966–68, Res. Rep. Comm. Soc. Antiq. London 29
- Luff, R. 1993 *Animal Bones from Excavations in Colchester, 1971–85* (Colchester Archaeological Trust)
- Lyne, M.A.B. and Jefferies, R.S. 1979 *The Alice Holt/Farnham Roman Pottery Industry*, Counc. Brit. Archaeol. Res. Rep. 30
- Major, H. 1987 'Fired-clay objects', in Buckley, D.G. and Hedges, J.D., *The Bronze Age and Saxon Settlements at Springfield Lyons, Essex*, Essex County Council Occas. Pap. 5, 11
- Major, H. 1993 'The Roman brick and tile', in Lavender, N.J., 'A *'principia'* at Boreham: excavations 1990', *Essex Archaeol. Hist.* 24, 9–13
- Major, H. 1997 'Miscellaneous finds', in Lavender, N.J., 'Middle Iron Age and Romano-British settlement at Great Dunmow: excavations at Buildings Farm 1993', *Essex Archaeol. Hist.* 28, 47–92
- Major, H. 1999a 'Querns and millstones', in Bedwin, O. and Bedwin, M., *A Roman malthouse: excavations at Stebbing Green, Essex, 1998*, E. Anglian Archaeol. Occas. Pap. 6, 17–19
- Major, H. 1999b 'The metalwork', in Brown, N., *The Archaeology of Ardleigh, Essex: Excavations 1955–80*, E. Anglian Archaeol. 90
- Major, J. in prep. a 'The querns', in Allen, P.T., *Caesaromagus: excavation of Roman Chelmsford 1980–93*, E. Anglian Archaeol.
- Major, J. in prep. b 'Roman brick and tile', in Allen, P.T., *Caesaromagus: excavation of Roman Chelmsford 1980–93*, E. Anglian Archaeol.
- Major, J. in prep. c 'The querns', in Atkinson, M. and Preston, S.J., *Elms Farm: excavations at the Late Iron Age and Roman settlement at Heybridge, Essex, 1993–5*, E. Anglian Archaeol.
- Major, H. and Turrell, R. in prep. 'Roman brick and tile', in Atkinson, M. and Preston, S.J., *Elms Farm: excavations at the Late Iron Age and Roman settlement at Heybridge, Essex, 1993–5*, E. Anglian Archaeol.
- Maltby, M. 1979 *The Animal Bones from Exeter 1971–1975*, Exeter Archaeol. Rep. 2
- Maltby, M. 1982 'Animal and bird bones', in Higham, R., 'Excavations at Okehampton Castle, Devon. Part 2: the Bailey', *Devon Archaeol. Soc.* 40, 114–135
- Manning, W.H. 1985 *Catalogue of the Romano-British Iron Tools, Fittings and Weapons in the British Museum* (London)
- Marsh, G. 1978 'Early second century fine wares in the London area', in Arthur, P. and Marsh, G. (eds.), *Early Fine Wares in Roman Britain*, Brit. Archaeol. Rep. Brit. Ser. 57, 119–223
- Martin, T.S. 1996 'A group of finds from the vicinity of the Noah's Ark Roman villa at Brightlingsea, Essex', *Essex Archaeol. Hist.* 27, 311–319
- Martin, T.S. 1998 'The Roman pottery' in Garwood, A., 'A Late Iron Age and Roman site at Shillingstone Field, Great Sampford', *Essex Archaeol. Hist.* 29, 33–48
- Martin, T.S. 2000 'The Roman pottery', in Medlycott, M., 'Prehistoric, Roman and post-medieval material from Harlow: investigations at Church Langley 1989–94', *Essex Archaeol. Hist.* 31, 33–94
- Martin-Kilcher, S. 1987 *Die Römischen Amphoren aus Augst und Kaiseraugst* (Bern)
- Mattingly, H. 1923–93 *The Roman Imperial Coinage Vols I–X*
- Mays, S.A. (nd) *A cremation from Brougham*, (Manuscript on file, Ancient Monuments Laboratory, English Heritage)
- McWhirr, A. (ed.) 1979 *Roman Brick and Tile*, Brit. Archaeol. Rep. Int. Ser. 68, 97–189
- Medlycott, M. 1996 'A medieval farm and its landscape: excavations at Stebbingford, Felsted 1993', *Essex Archaeol. Hist.* 27, 102–181
- Mees, A.W. 1995 *Modellsignierte Dekorationen auf südgallicher Terra Sigillata* (Stuttgart)
- Miles, D. 1984 *Archaeology at Barton Court Farm, Abingdon, Oxon*, Counc. Brit. Archaeol. Res. Rep. 50
- Moffet, L. 1989 *Economic activities at Rocester, Staffordshire in the Roman, Saxon and medieval periods: the evidence from charred plant remains*, Ancient Monuments Laboratory Report 15/89 (English Heritage, London)
- Monaghan, J. 1987 *Upchurch and Thameside Roman Pottery: a ceramic typology for northern Kent, first to third centuries AD*, Brit. Archaeol. Rep. Brit. Ser. 173
- Moore, P.D., Webb, J.A. and Collinson, M.E. 1991 *Pollen Analysis* (2nd edition, Blackwell Scientific Publications, Oxford)
- Moray-Williams, A. 1909 'The Romano-British establishment at Stroud, near Petersfield, Hants', *Archaeol. J.* 66, 33
- Morris, P. 1979 *Agricultural Buildings in Roman Britain*, Brit. Archaeol. Rep. Brit. Ser. 70, 55–65
- Mulkeen, S. and O'Connor, T. 1997 'Raptors in towns: first faltering steps towards an ecological model', *International J. Osteoarchaeology* (special edition)
- Murphy, P. 1984 'Carbonised cereals and crop weeds from buildings 38, 41 and 45', in Crummy, P., *Excavations at Lion Walk, Balcerne Lane and Middleborough, Colchester* Archaeol. Rep. 3, 105, 108, 110 and microfiche
- Murphy, P. 1992 'Environmental studies: Culver Street', in Crummy, P., *Excavations at Culver Street, the Gilbert School, and other sites in Colchester 1971–85*, Colchester Archaeol. Rep. 6, 273–289 and microfiche
- Murphy, P. 1996a 'Environmental archaeology', in Bedwin, O. (ed.), *The Archaeology of Essex: Proceedings of the Writtle Conference*, 168–180 (Essex County Council: Chelmsford)
- Murphy, P. 1996b 'Plant remains', in Gregory, T. and Gurney, D., *A Romano-British farmyard at Weeting, Norfolk*, E. Anglian Archaeol. Occas. Pap. 1, 35–6
- Myres, J.N.L. 1986 *The English Settlements*, Oxford History of England
- Neal, D.S., Wardle, A. and Hunn, J. 1990 *Excavations of the Iron Age, Roman, and Medieval Settlement at Gorhambury, St Albans*, English Heritage Archaeol. Rep. 14
- Neal, D.S. 1987 'Excavations at Magiovinium, Buckinghamshire, 1978–80', *Rec. Buckinghamshire* 29, 1–124
- Needham, S., 1991 *Excavation and Salvage at Runnymede Bridge, 1978: the Late Bronze Age Waterfront Site* (London)



- Needham, S., 1993 'The structure of settlement and ritual in the Late Bronze Age of south-east Britain', in Mordant, C. and Richard, A. (eds), *L'habitat à l'occupation du sol à l'Age du Bronze en europe, Actes du Colloque International de Lons-le-Sauvier, 16-19 Mai 1990*, Editions du Comité des Travaux historique et scientifique: Documents Prehistorique 4, 49-69
- Oswald, A. and Buxton, L.H.D. 1937 'A Roman fortified villa at Norton Disney, Lincs.', *Antiq. J.* 17, 138-78
- Oswald, F. 1936-7 *Index of Figure-Types on Terra Sigillata ('Samian Ware')*, (Liverpool)
- Oxford Archaeotechnics 1992 *Holts Farm, Boreham, Essex: Magnetic Survey*
- Parker, A.J. 1988 'The birds of Roman Britain', *Oxford J. Archaeol.* 7(2), 197-226
- Parminter, Y. 1990 'The pottery', in Neal, D.S, Wardle, A. and Hunn, J., *Excavation of the Iron Age, Roman and Medieval Settlement at Gornahbury, St Albans*, English Heritage Archaeol. Rep. 14
- Payne, S. 1973 'Kill-off patterns in sheep and goats: the mandibles from Asvan Kale', *Anatolian Studies* 23, 281-303
- Payne, S. 1987 'Reference codes for wear states in the mandibular cheek teeth of sheep and goats', *J. Archaeol. Sci.* 14, 609-614
- Payne, S. and Bull, G. 1988 'Components variation in measurements of pig bones and teeth, and the use of measurements to distinguish wild from domestic pig remains', *Archaeozoologia* 2, 27-65
- Peacock, D.P.S. 1977 'Roman amphorae: typology, fabric and origins', *Colln. De L'Ecole Francaise de Rome* 32, 261-78
- Peacock, D.P.S. 1987 'Iron Age and Roman quern production at Lodsworth, West Sussex', *Antiq. J.* 67, 61-85
- Peacock, D.P.S. and Williams, D.F. 1986 *Amphorae and the Roman Economy* (London)
- Perrin, R. 1996 'Roman pottery', in Mackreth, D.F., *Orton Hall Farm: a Roman and Early Anglo-Saxon Farmstead*, E. Anglian Archaeol. 76
- Price, J. 1978 'Trade in glass', in du Plat Taylor, J. and Cleere, H. (eds.), *Roman Shipping and Trade: Britain and the Rhine Provinces*, Counc. Brit. Archaeol. Res. Rep. 24 (London)
- Prummel, W. 1997 'Evidence of hawking (falconry) from bird and mammal bones', *International J. Osteoarchaeol.*, (special edition)
- Rawes, B. 1981 'The Romano-British site at Brockworth, Glos.', *Britannia* XII, 45-78
- Reaney, P.H. 1935 *The Place Names of Essex* (Cambridge University Press)
- Reece, R. 1991 *Roman Coins from 140 Sites in Britain*
- Rees, S.E. 1979 *Agricultural Implements in Prehistoric and Roman Britain*, Brit. Archaeol. Rep. Brit. Ser. 69, 59-61
- Reilly, K. 1985 'Gli uccelli' in Ricci A. (a cura di), *Settefinestre. Una villa schiavistica nell'Etruria Romana*, Vol. III, 299-302 (Modena, Panini)
- Rhodes, M. 1980 'Leather footwear' in Jones, D.M. *Excavations at Billingsgate Buildings, Lower Thames Street, London, 1974*, London Middlesex Archaeol. Soc. Spec. Pap. 4, 99-128
- Richmond, I. 1963 'Roman Essex', in Powell, W.R. (ed.), 'A History of the County of Essex', *Victoria County History* 3, 1-24
- Ricken, H. 1948 *Die Bilderschüsseln der römischen Töpfer von Rheinzabern* (Tafelband, Speyer)
- Ricken, H. and Fischer, C. 1963 *Die Bilderschüsseln der römischen Töpfer von Rheinzabern*, (Textband, Bonn)
- Rickett, R. 1995 *The Anglo-Saxon Cemetery at Spong Hill, North Elmham, Part VII: the Iron Age, Roman and Early Saxon Settlement*, E. Anglian Archaeol. 73
- Roberts, W.I. 1982 *Romano-Saxon Pottery*, Brit. Archaeol. Rep. Brit. Ser. 106
- Robinson, M. and Wilson, B. 1987 'A survey of environmental archaeology in the South Midlands', in Keeley, H. (ed.), *Environmental Archaeology: a Regional Review*, Vol. II, 16-100 Historic Buildings Monuments Comm. England, Occas. Pap. 1
- Rodwell, K.A. 1988 *The Prehistoric and Roman Settlement at Kelvedon, Essex*, Counc. Brit. Archaeol. Res. Rep. 63
- Rodwell, W. 1978 'Rivenhall and the emergence of first century villas in Northern Essex', in Todd, M. (ed.), *Studies in the Romano-British Villa*, 11-32
- Rodwell, W.J. and Rodwell, K.A. 1985 *Rivenhall: investigations of a villa, church, and village, 1950-1977*, Chelmsford Archaeol. Trust Rep. 4, Counc. Brit. Archaeol. Res. Rep. 55
- Rogers, G.B. 1974 *Poteries sigillées de la Gaule centrale*, Gallia Supplément XXVIII (Paris)
- Rogerson, A. 1977 'Roman wells at Scole', in Wade-Martins, P. (ed.) E. Anglian Archaeol. 5, 111-17
- Rook, T. 1987 'The Roman villa site at Dicket Mead', *Hertfordshire Archaeol.* 9, 79-175
- Russell, M. 1990 'Strange symbols of some kind: the problems surrounding stamped Roman clay walls', *Bull. Inst. Archaeol.* 27, 87-117
- Salaman, R.A. 1986 *Dictionary of leather-working tools c.1700-1950: and the tools of allied trades*, (London)
- Schleiermacher, M. 1982 'Römische leder und textiltunde aus Köln', *Archäologisches Korrespondenzblatt* 12, 205-16
- Schmid, E. 1972 *Atlas of Animal Bones* (Amsterdam-London-New York, Elsevier)
- Selkirk, A. and Selkirk, W. (eds.) 1996 'Piddington', *Curr. Archaeol.* 146, 57-64
- Serjeantson, D. 1989 'Animal remains and the tanning trade', in Serjeantson, D. and Waldron, T. (eds.), *Diet and Craft in Towns*, Brit. Archaeol. Rep. Brit. Ser. 199, 129-146 (Oxford)
- Shepherd, J.D. 1986 'The glass', in McWhirr, A., *Houses in Roman Cirencester*, 117-21 (Cirencester)
- Shipman, P., Forster, G. and Schoeninger, M. 1984 'Burnt bones and teeth: an experimental study of colour, morphology, crystal structure and shrinkage', *J. Archaeol. Sci.* 11, 307-25

- Smith, A.J.E. 1978 *The Moss Flora of Britain and Ireland*, (Cambridge University Press)
- Smith, J.T. 1963 'Romano-British aisled houses', *Archaeol. J.* **120**, 1–27
- Smith, J.T. 1978 'Villas as a key to social structure', in Todd, M. (ed.), *Studies in the Romano-British Villa*, 149–73 (Leicester University Press)
- Smoothy, M.D. 1993 'The animal bone', in Havis, R., 'Roman Braintree: excavations 1984–90', *Essex Archaeol. Hist.* **24**, 52–61
- Stace, C. 1991 *New Flora of the British Isles* (Cambridge University Press)
- Stead, I.M. 1976 *Excavations at Winterton Roman Villa*, Dept. Envir. Archaeol. Rep. **9**
- Stead, I.M. and Rigby, V. 1986 *Baldock: the Excavation of a Roman and Pre-Roman Settlement, 1968–72*, Britannia Monogr. Ser. **7**, 42–43
- Stephen, M. 1988 'The mystery of Walkfares', in Burgess, E. and Rance, M. (eds.), *Boreham, History, Tales and Memories of an Essex Village*, 85–7 (Boreham Histories Project Group)
- Stewart, J.R. 1992 *The Turdidae of Pin Hole Cave, Derbyshire*, (unpublished MSc dissertation)
- Straker, V. 1984 'First and second century carbonised grain from Roman London', in Van Zeist, W. and Casparie, W.A., *Plants and Ancient Man, Studies in Palaeoethnobotany*, 323–9 (Rotterdam)
- Stokes, M. 1984 'Anglo-Saxon pottery and die-stamps', *Medieval Ceramics* **7**
- Taylor, H.M. and Taylor, J. 1965 *Anglo-Saxon Architecture* (Cambridge University Press)
- Teichert, M. 1984 'Size variation in cattle from Germania Romana and Germania Libera', in Grigson, C. and Clutton-Brock, J. (eds.), *Animals and Archaeology: 4. Husbandry in Europe*, Brit. Archaeol. Rep. Int. Ser. **227**, 93–103
- Thompson, I. 1982 *Grog-tempered 'Belgic' Pottery of South-eastern England*, Brit. Archaeol. Rep. Brit. Ser. **106**
- Tottenham, C.E. 1954 *Coleoptera Staphylinidae section (a) Piestinae to Euaesthetinae*, Royal Entomological Society Handbook for the Identification of British Insects **4**, pt. 8a (London)
- Townend, P. and Hinton, P. 1978 'Glass', in Bird, J., Graham, A.H., Sheldon, H. and Townend, P. (eds.), *Southwark Excavations, 1972–1974*, Surrey Archaeol. Soc./London Middlesex Archaeol. Soc. Joint Pub. **1**
- Trotter, M. and Hixon, B.B. 1974 'Sequential changes in weight, density and percentage ash weight human skeletons from an early foetal period through old age', *Anatomical Record* **179**, 1–18
- Turner, R. 1999 *Excavations of an Iron Age Settlement and Roman Religious Complex at Ivy Chimneys, Witham, Essex 1978–83*, E. Anglian Archaeol. **88**
- Turner-Walker, C. and Wallace, C. 1999 'The Iron Age and Roman pottery' in Turner, R., *Excavations of an Iron Age Settlement and Roman Religious Complex at Ivy Chimneys, Witham, Essex 1978–83*, E. Anglian Archaeol. **88**, 123–79
- Van der Veen, M. 1989 'Charred grain assemblages from Roman-period corn driers in Britain', *Archaeol. J.* **146**, 302–319
- Van der Veen, M. 1994 'Grain from the forecourt granary', in Bidwell, P. and Speak, S., *Excavations at South Shields Roman Fort, Volume 1*, Soc. Antiq. Newcastle upon Tyne Monogr. Ser. **4**, 243–258
- von den Driesch, A. 1976 *A guide to the measurement of animal bones from archaeological sites*, Peabody Museum Bulletin 1 (Cambridge Mass., Harvard University)
- von den Driesch, A. and Boessneck, J. 1974 'Kritische Ammerkungen zur iderristhöhenberechnung aus Längenmassen vor- und frühgeschichtlicher Tierknochen', *Säugetierkundliche Mitteilungen* **22**, 325–348
- Walker, J.J. 1910 '*Holoparamesus caularum* Aubé, and *Aglenus brunneus*, Gyllenhall, near Oxford', *Entomologist's Monthly Magazine* **46**, 91–2
- Walker, J.J. 1916 'Granary beetles at Cothill, Berks', *Entomologist's Monthly Magazine* **52**, 16–17
- Wallace, C. 1993a 'The pottery', in Lavender, N.J., 'A principia at Boreham, near Chelmsford, Essex: excavations 1990', *Essex Archaeol. Hist.* **24**, 1–21
- Wallace, C. 1993b 'Notes on the dating of Late Shell-tempered Ware in Essex', *J. Roman Pottery Stud.* **6**, 123–26
- Wallace, C. 1995 'A Roman rural shrine at Boreham? The Bulls Lodge excavation of 1990 reinterpreted', *Essex Archaeol. Hist.* **26**, 264–69
- Wallace, C. 1997 'The Late Iron Age and Roman pottery', in Lavender, N.J., 'Middle Iron Age and Romano-British settlement at Great Dunmow: excavations at Buildings Farm 1993', *Essex Archaeol. Hist.* **28**, 66–81
- Wallace, C. and Turner-Walker, C. 1998 'The Roman pottery', in Clarke, C.P., *Excavations South of Chignall Roman Villa, Essex, 1977–81*, E. Anglian Archaeol. **83**, 98–112
- Wallis, S. and Waughman, M. 1998 *Archaeology and the Landscape in the Lower Blackwater Valley*, E. Anglian Archaeol. **82**
- Webster, G. 1999 'Bronze (copper alloy), silver and gold', in Turner, R., *Excavations of an Iron Age Settlement and Roman Religious Complex at Ivy Chimneys, Witham, Essex 1978–83*, E. Anglian Archaeol. **88**
- Weller, S.G.P. 1974 'A late fourth-century cremation from Billericay, Essex', *Antiq. J.* **54**, 282–285
- Wheeler, A. 1978 *Key to the Fishes of Northern Europe* (Warne)
- Wheeler, R.E.M. 1943 *Maiden Castle, Dorset*, Rep. Res. Comm. Soc. Antiq. London **XII**
- White, K.D. 1970 *Roman Farming*
- Wickenden, N.P. 1987 'Prehistoric settlement and the Romano-British Small Town at Heybridge, Essex', *Essex Archaeol. Hist.* **17**, 7–68
- Wickenden, N. 1992 *The temple and other sites in the north-eastern sector of Caesaromagus*, Counc. Brit. Archaeol. Res. Rep. **75**
- Wickenden, N.P. 1996 'The Roman towns of Essex', in Bedwin, O. (ed.), *The archaeology of Essex: proceedings of the Writtle Conference*, 76–94 (Essex County Council: Chelmsford)
- Wickenden, N. and Drury, P.J. 1988 'The building material', in Drury, P.J., *The Mansio and other sites in the south-eastern sector of Caesaromagus*, Chelmsford Archaeol. Trust Rep. **31**, Counc. Brit. Arch. Res. Rep. **66**, 77–90

- Willcox, G.H. 1977 'Exotic plants from Roman waterlogged sites in London', *J. Archaeol. Sci.* **4**, 269–282
- Williams, D. 1979 'The plant remains', in Kenward, H.K. and Williams, D. *Biological evidence from the Roman warehouses in Coney Street*, The Past Environment of York **14/2**, 52–6
- Williams, D.F. 1994 'Campanian amphorae', in Bidwell, P. and Speak, S., *Excavations at South Shields Roman Fort*, London, 217–19
- Williams, D.F. 1997 'Amphorae', in Monaghan, J., *Roman Pottery from York* (York Arch. Trust)
- Williams, R.J. and Zeepvat, R.J. 1994 *Bancroft: a Late Bronze Age/Iron Age Settlement, Roman Villa and Temple-mausoleum*, Bucks. Archaeol. Soc. Monograph Ser. 7, volumes I and II
- Williamson, T. 1987 'Early co-axial field systems on the East Anglian Boulder Clays', *Proc. Prehist. Soc.* **53**, 419–32
- Willis, S. 1996 'The Romanization of pottery assemblages in the east and north-east of England during the first century AD: a comparative analysis', *Britannia* **XXVII**, 179–221
- Wilmot, T. 1982 'Excavations at Queen Street, City of London, 1953 and 1960, and Roman timber-lined wells in London', *Trans. London Middlesex Archaeol. Soc.* **33**, 1–78
- Wilson, M. 1984 'The other pottery', in Frere, S.S., *Verulamium Excavations, Vol. III*, Oxford Univ. Comm. Archaeol. Monogr. **1**, 200–263
- Wiltshire, P.E.J., Edwards K.J., and Bond, S. 1994 Microbially-derived metallic sulphide spherules, pollen and the waterlogging of archaeological sites, in Davis, O.K. (ed.), *Aspects of Archaeological Palynology: Methodology and Applications*, American Assoc. Stratigraphic Palynologists Contributions Series **29**, 207–21
- Wright, M.E. 1996 'Querns', in May, J., *Dragonby: report on excavations at an Iron Age and Romano-British settlement in North Lincolnshire*, Oxbow Monograph 61, 365–76
- Wymer, J.J. and Brown, N. 1995 *Excavations at North Shoebury: Settlement and Economy in South-East Essex 1500 BC–AD 1500*, E. Anglian Archaeol. **75**
- Young, C.J. 1977 *Oxfordshire Roman Pottery*, Brit. Archaeol. Rep. **43**
- Yule, B. 1989 'Excavations at Winchester Palace, Southwark', *The London Archaeol.* **6(2)** 31–39