

This is a repository copy of *LIFE-SHARE Project: Developing a Digitisation Strategy Toolkit*.

White Rose Research Online URL for this paper:

<https://eprints.whiterose.ac.uk/11255/>

Proceedings Paper:

Shipman, B., Herring, M., Potter, N. et al. (1 more author) (2010) LIFE-SHARE Project: Developing a Digitisation Strategy Toolkit. In: Lalmas, M., Jose, J., Rauber, A., Sebastiani, F. and Frommholz, I., (eds.) Research and Advanced Technology for Digital Libraries. Lecture Notes in Computer Science. European Conference on Research and Advanced Technology for Digital Libraries (ECDL) 2010, 06-10 Dec 2010 Springer , Berlin , 502 -505.

<https://doi.org/10.1007/978-3-642-15464-5>

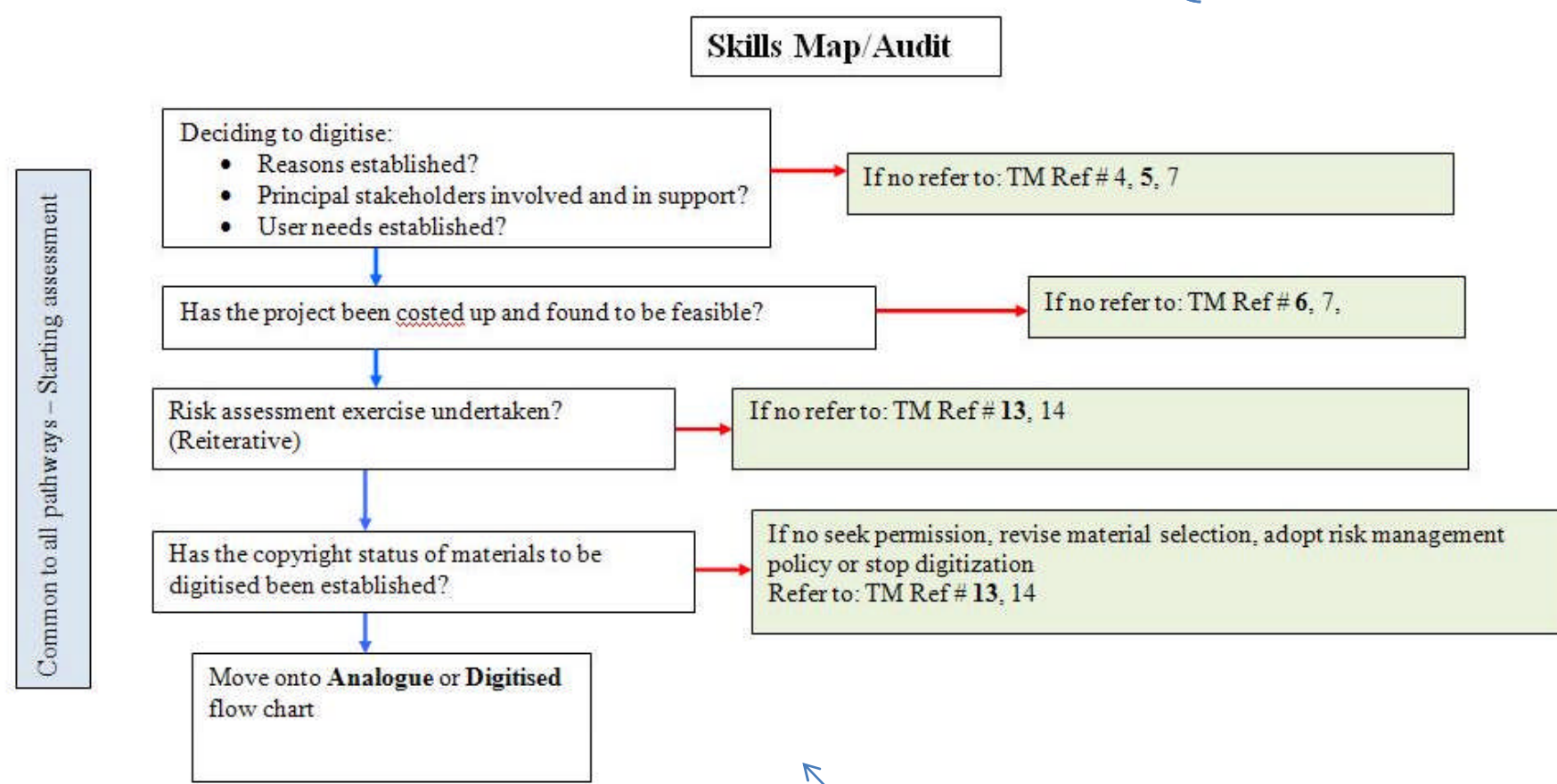
Reuse

Items deposited in White Rose Research Online are protected by copyright, with all rights reserved unless indicated otherwise. They may be downloaded and/or printed for private study, or other acts as permitted by national copyright laws. The publisher or other rights holders may allow further reproduction and re-use of the full text version. This is indicated by the licence information on the White Rose Research Online record for the item.

Takedown

If you consider content in White Rose Research Online to be in breach of UK law, please notify us by emailing eprints@whiterose.ac.uk including the URL of the record and the reason for the withdrawal request.

The Skills map has been created as a guide through all stages of a digitisation project. At each stage it prompts you to assess whether you have the necessary skills and knowledge to proceed. If not, you will be directed to relevant training materials.



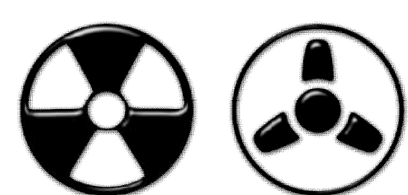
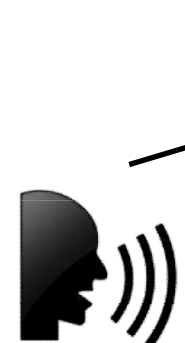
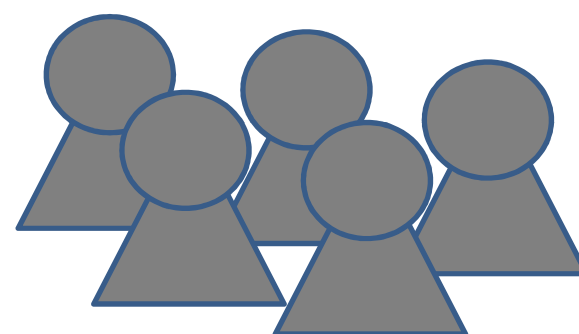
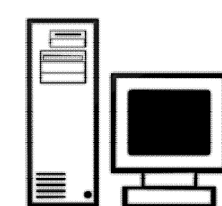
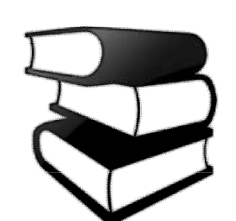
Resources are vital to support any digitisation strategy. Much of the information you need could already have been produced by someone else. However, there are times when internal resources are necessary. It is useful to create technical guidelines for file formats or metadata standards. These may differ from externally recommended standards to reflect local requirements. Resources are needed at every stage of the lifecycle.

Access can be provided by a range of infrastructure already existing within an institution such as digital libraries, repositories and virtual learning environments. If this is not fit for purpose external services such as JORUM and a multitude of subject based archives and repositories may be useful. Both internal and external infrastructure can also support the Ingest and Preservation stages of the lifecycle.

The LIFE model (www.life.ac.uk) provides a useful structure to explore digitisation. A modified version is used for the strategy toolkit. At each stage of the digital lifecycle, policies, infrastructure and resources are provided to assist in the establishment and delivery of the strategy.



Virtual Learning Environment



Infrastructure is key to developing an ongoing digitisation strategy. It may be that the digitising itself is out-sourced but it is still necessary to have infrastructure to support a range of related activities such as metadata creation, storage and access. LIFE-SHARE is exploring how the White Rose Libraries could share infrastructure. This could involve sharing equipment and expertise in a variety of different ways.

Staff and their knowledge are essential to developing a good digitisation strategy. To support the development of your strategy it can be useful to carry out a survey of staff skills. Not all staff may use their digitisation skills in their current job so a survey may provide details of unknown expertise you could benefit from.

The LIFE-SHARE project received funding from JISC in September 2009 to explore digitisation across the three White Rose Universities of Leeds, Sheffield and York.

The project runs from September 2009 to February 2011. The aim of the project is to identify and establish institutional and consortial strategies and infrastructure for the creation, curation and preservation of a variety of digital content.

For more information check out our website at:
<http://www.leeds.ac.uk/library/projects/lifeshare/>

or email us at:
lifeshare@leeds.ac.uk