



UNIVERSITY OF LEEDS

This is a repository copy of *Spatial variability of fluvial blanket peat erosion rates for the 21st Century modelled using PESERA-PEAT*.

White Rose Research Online URL for this paper:
<http://eprints.whiterose.ac.uk/109436/>

Version: Supplemental Material

Article:

Li, P, Irvine, B, Holden, J orcid.org/0000-0002-1108-4831 et al. (1 more author) (2017)
Spatial variability of fluvial blanket peat erosion rates for the 21st Century modelled using PESERA-PEAT. CATENA, 150. pp. 302-316. ISSN 0341-8162

<https://doi.org/10.1016/j.catena.2016.11.025>

© 2016 Elsevier B.V. Licensed under the Creative Commons Attribution-NonCommercial-NoDerivatives 4.0 International
<http://creativecommons.org/licenses/by-nc-nd/4.0/>

Reuse

Unless indicated otherwise, fulltext items are protected by copyright with all rights reserved. The copyright exception in section 29 of the Copyright, Designs and Patents Act 1988 allows the making of a single copy solely for the purpose of non-commercial research or private study within the limits of fair dealing. The publisher or other rights-holder may allow further reproduction and re-use of this version - refer to the White Rose Research Online record for this item. Where records identify the publisher as the copyright holder, users can verify any specific terms of use on the publisher's website.

Takedown

If you consider content in White Rose Research Online to be in breach of UK law, please notify us by emailing eprints@whiterose.ac.uk including the URL of the record and the reason for the withdrawal request.



eprints@whiterose.ac.uk
<https://eprints.whiterose.ac.uk/>

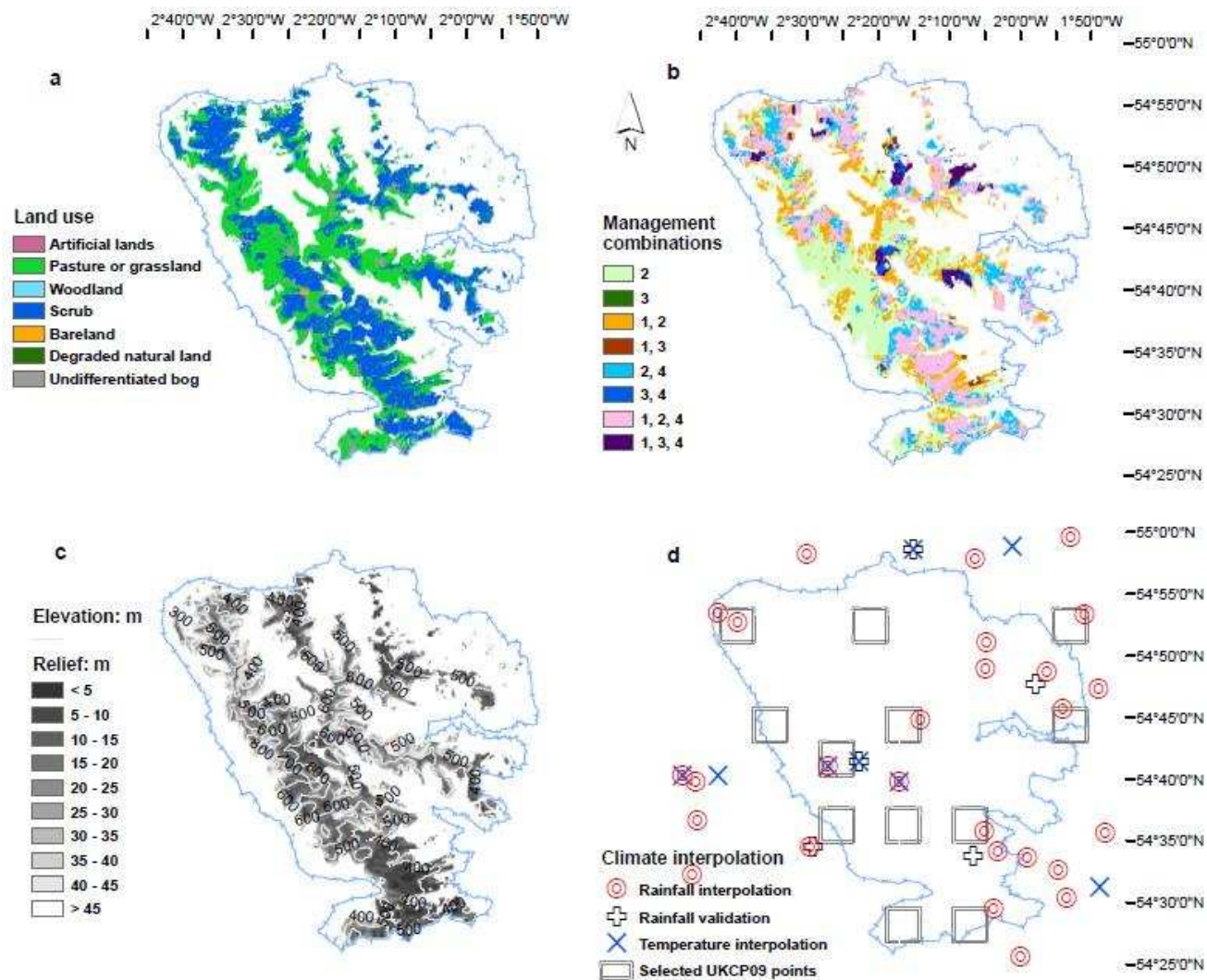
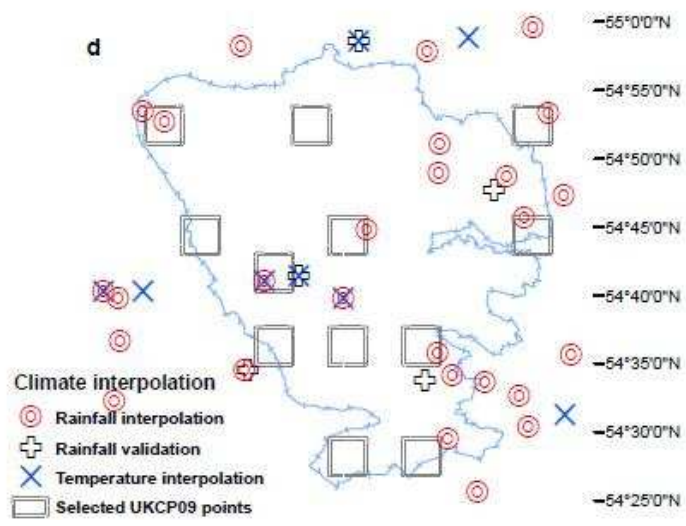
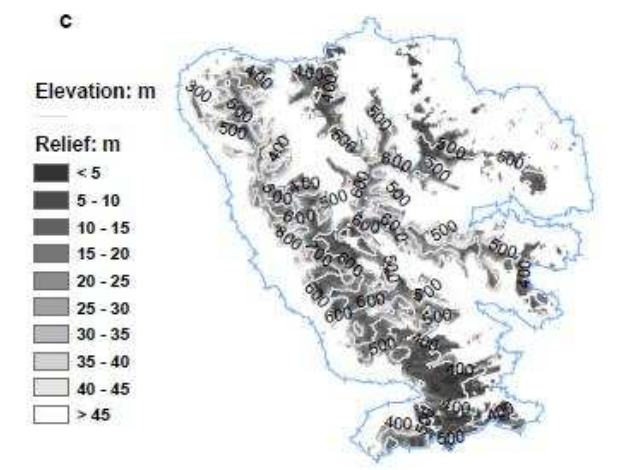
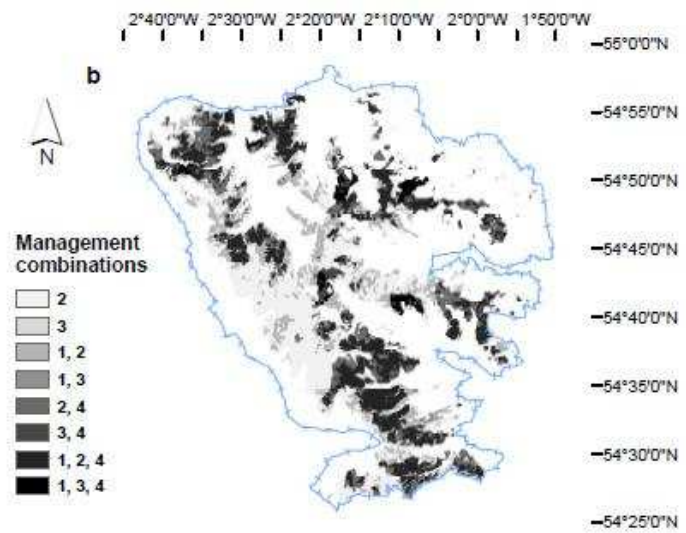
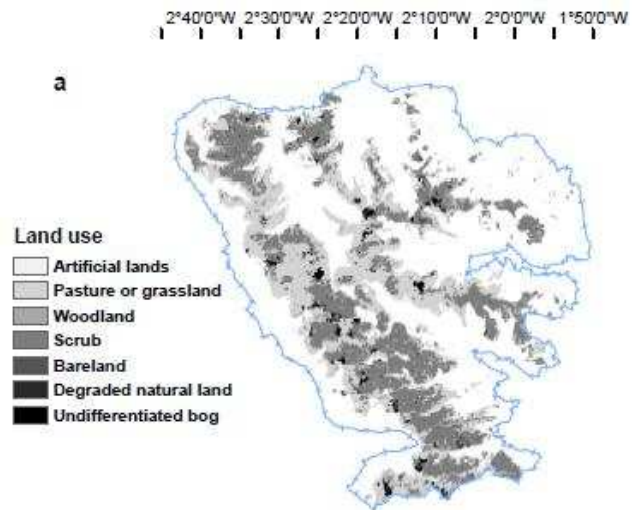


Figure 1 Maps of the study site (North Pennines), including land cover for blanket peatlands (a); management combinations within blanket peatlands (b), each code represents a management option: 1 = artificial drainage; 2 = light grazing; 3 = overgrazing; 4 = managed burning; local relief (c); points selected for climate interpolation (d).



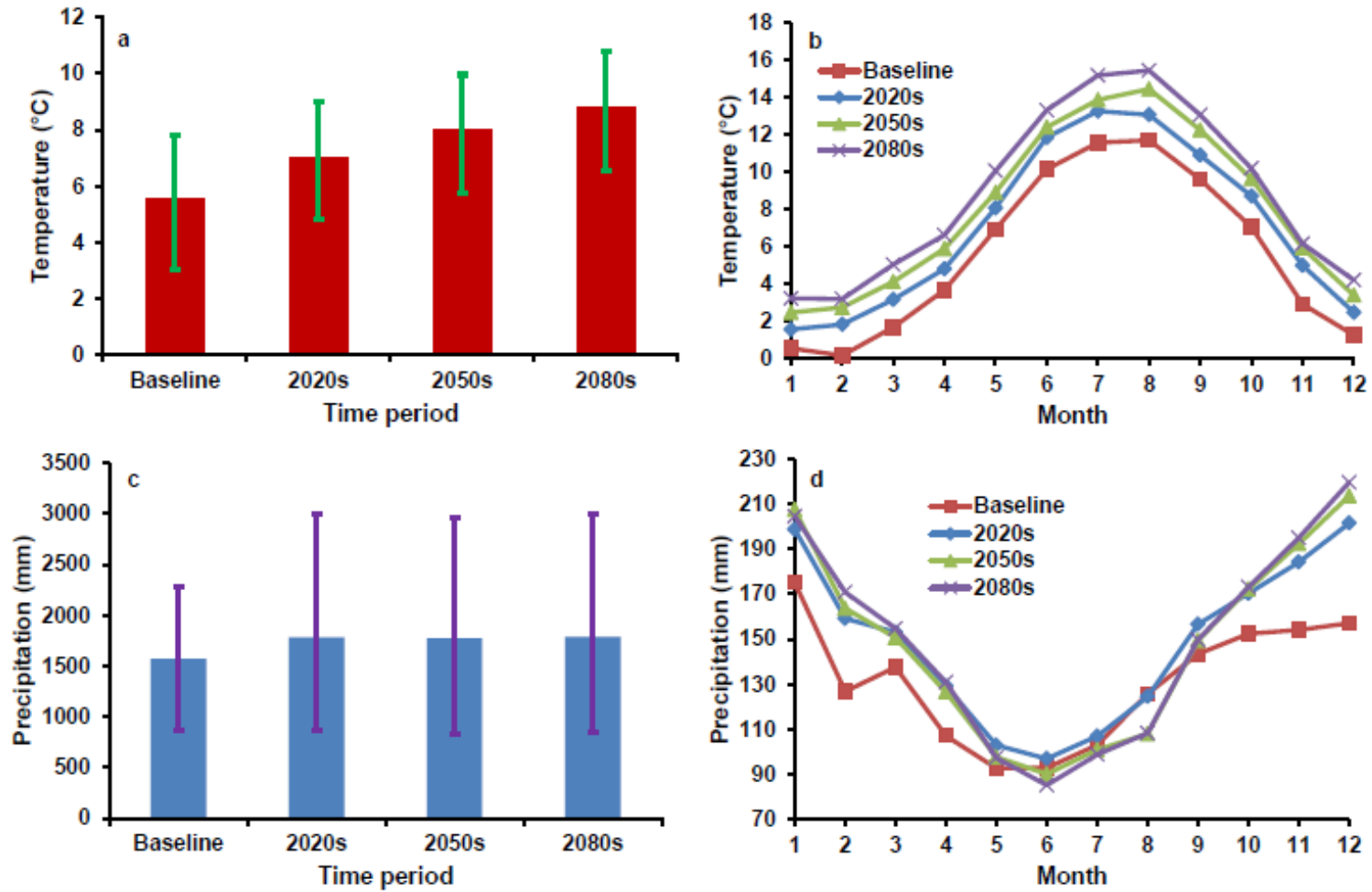


Figure 2 Change of mean annual and monthly temperature (a and b) and precipitation (c and d) for the North Pennines blanket peatlands evaluated based on the MIDAS baseline (1961-1990) climate records and future (2020s, 2050s and 2080s) climate projections derived from MIDAS baseline data and UKCP09 projections. Error bars show the range of mean annual temperature and precipitation. Month 1-12 corresponds to January - December.

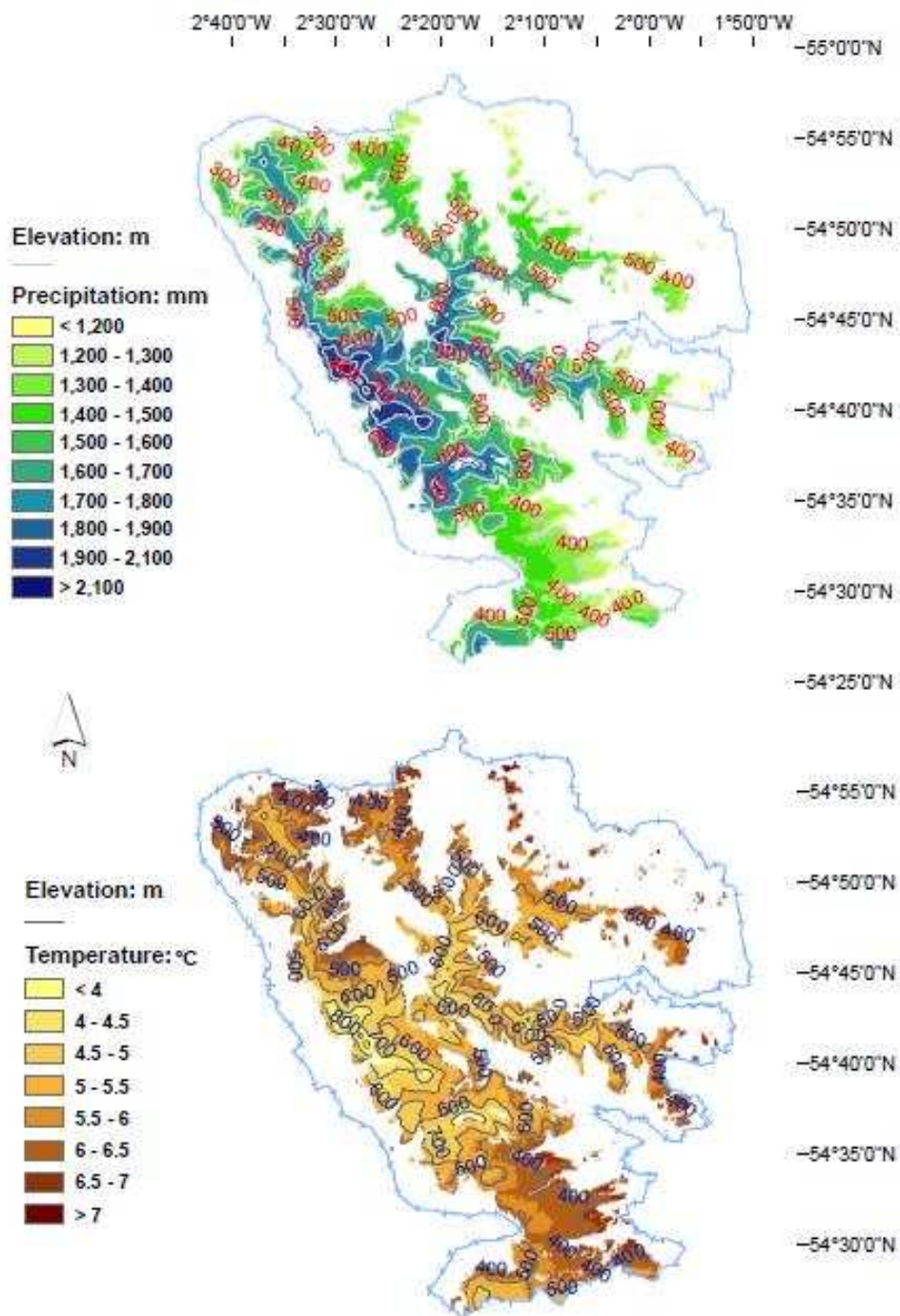
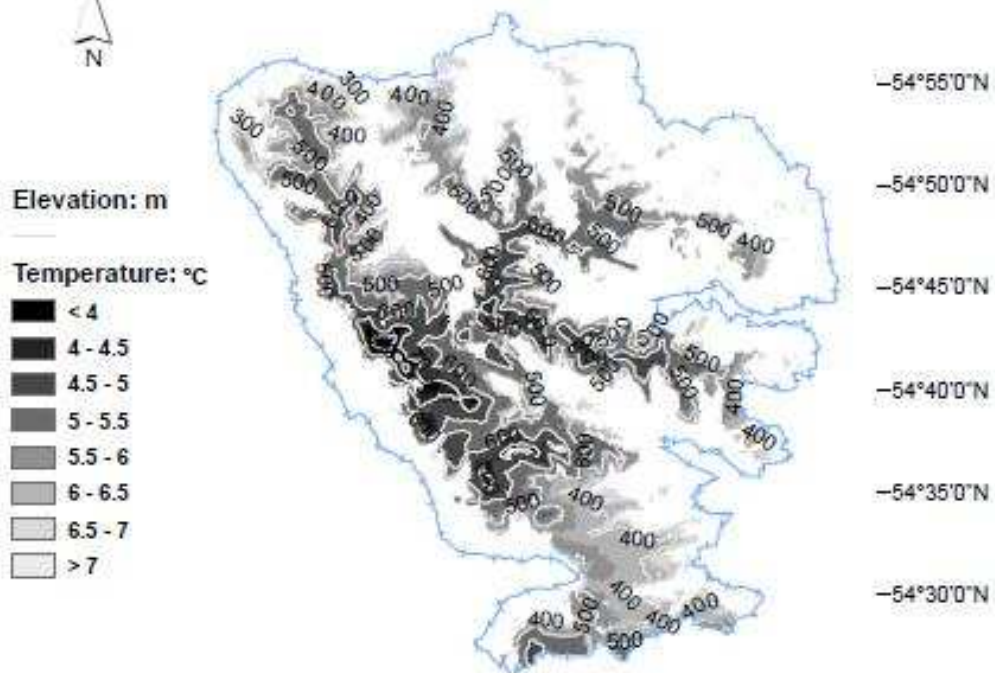
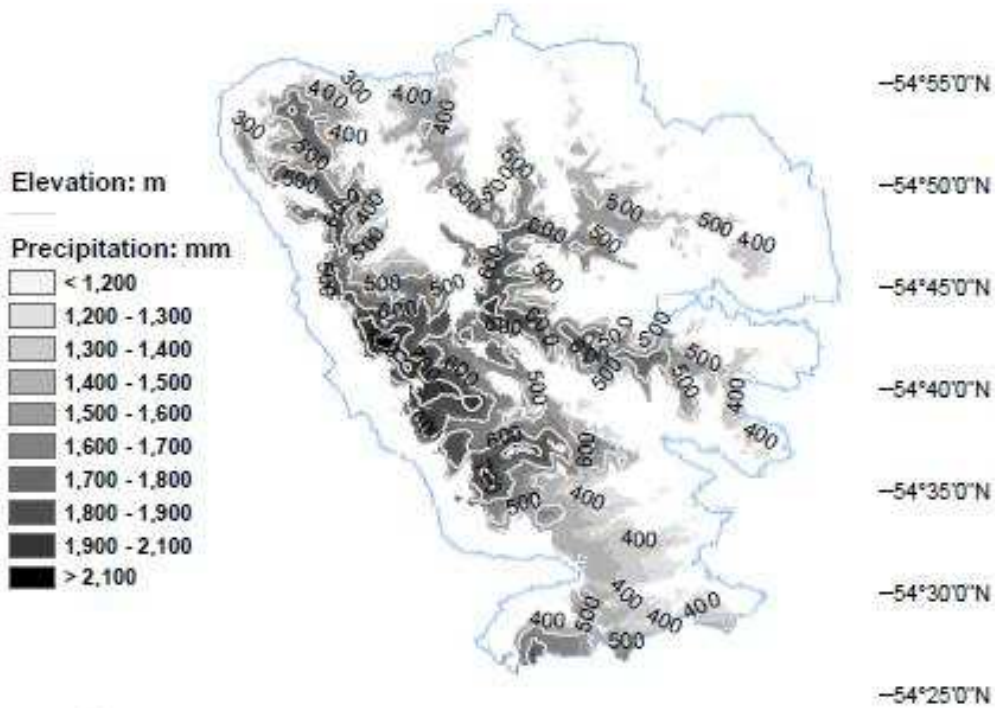


Figure 3 Mean annual precipitation temperature derived from the MIDAS baseline (1961-1990) records and elevation of North Pennines blanket peatlands.

2°40'0"W 2°30'0"W 2°20'0"W 2°10'0"W 2°0'0"W 1°50'0"W



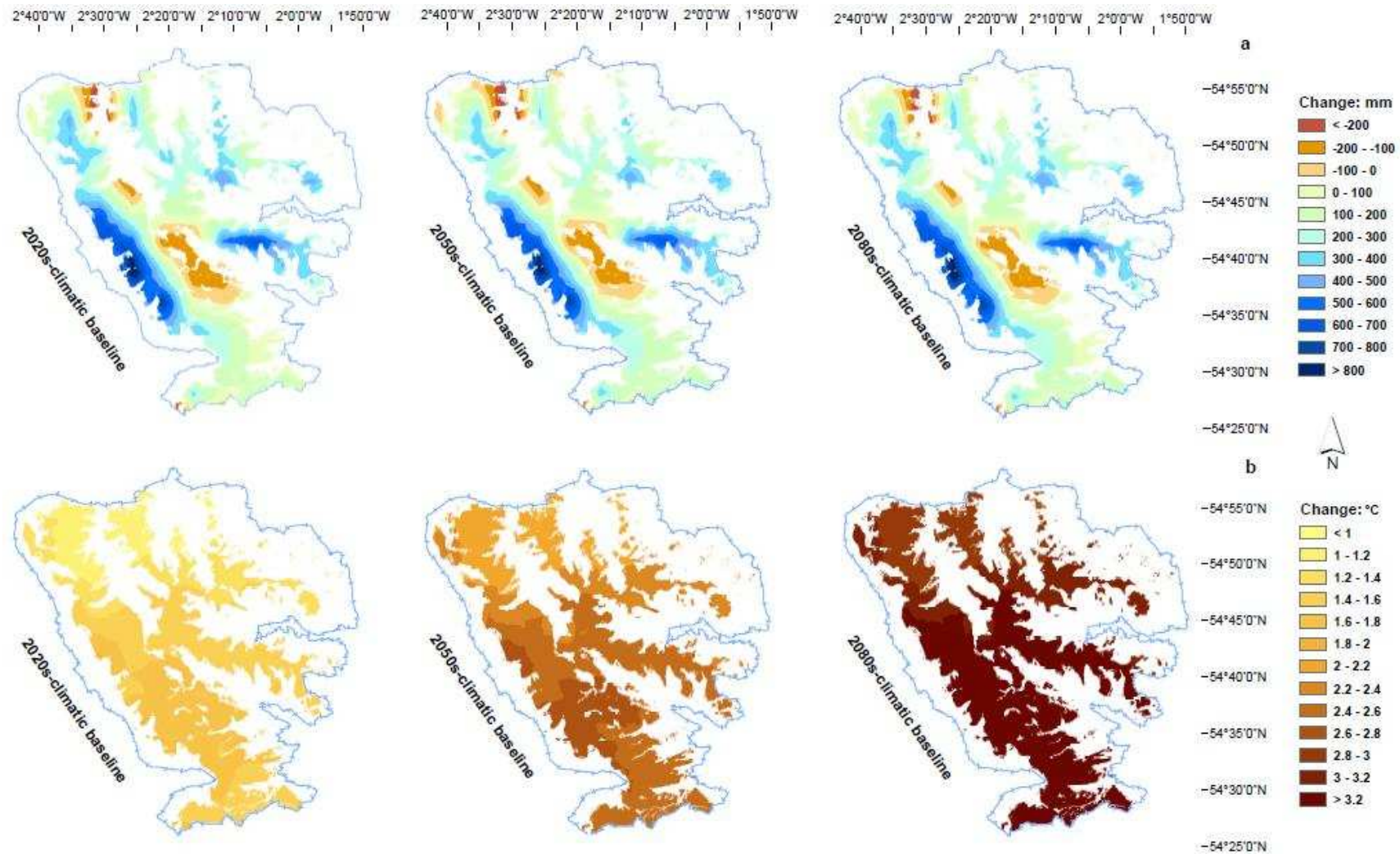


Figure 4 Spatial patterns of changes in mean annual precipitation (a) and temperature (b) for the North Pennines blanket based on the MIDAS baseline (1961-1990) climate records and future (2020s, 2050s and 2080s) climate projections derived from MIDAS baseline data and UKCP09 projections.

2°40'0"W 2°30'0"W 2°20'0"W 2°10'0"W 2°0'0"W 1°50'0"W



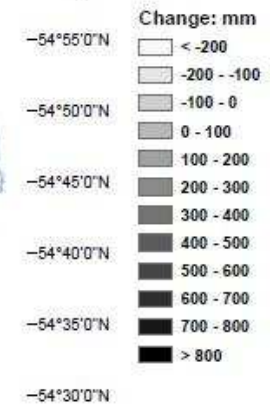
2°40'0"W 2°30'0"W 2°20'0"W 2°10'0"W 2°0'0"W 1°50'0"W



2°40'0"W 2°30'0"W 2°20'0"W 2°10'0"W 2°0'0"W 1°50'0"W



a

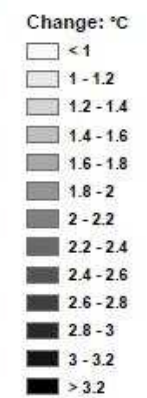


-54°55'0"N
-54°50'0"N
-54°45'0"N
-54°40'0"N
-54°35'0"N
-54°30'0"N

b



-54°55'0"N



-54°50'0"N

-54°45'0"N

-54°40'0"N

-54°35'0"N

-54°30'0"N

-54°25'0"N

2°40'0"W 2°30'0"W 2°20'0"W 2°10'0"W 2°0'0"W 1°50'0"W



2°40'0"W 2°30'0"W 2°20'0"W 2°10'0"W 2°0'0"W 1°50'0"W



2°40'0"W 2°30'0"W 2°20'0"W 2°10'0"W 2°0'0"W 1°50'0"W



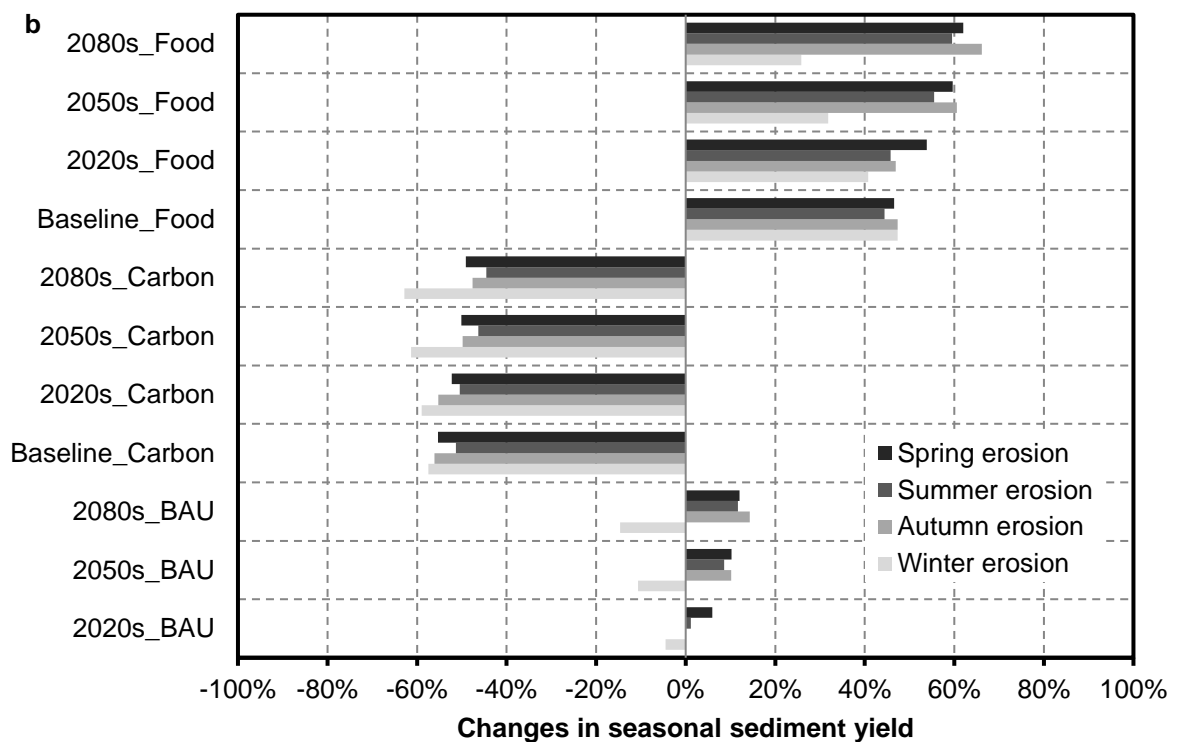
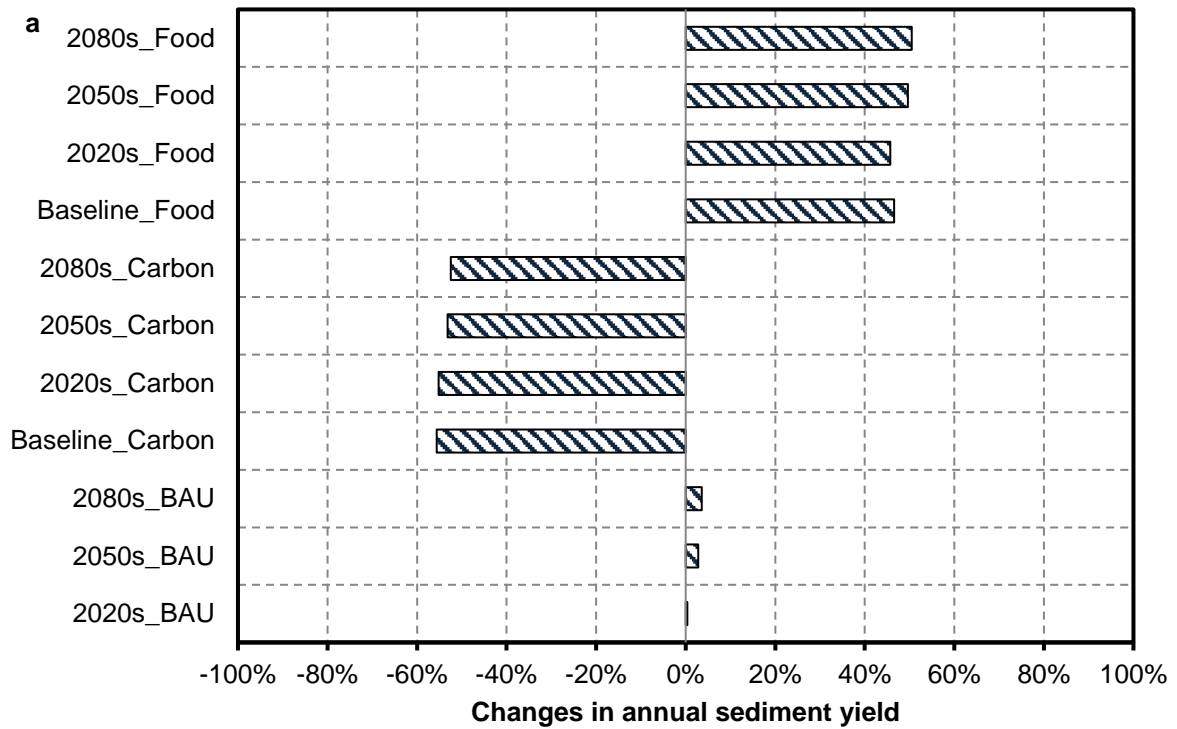


Figure 5 Predicted response of mean annual (a) and seasonal (b) sediment yield for the North Pennines blanket peatlands. 'Baseline', '2020s', '2050s' and '2080s' represent the climate condition of 1961-1990, 2010-2039, 2040-2069 and 2070-2099, while 'BAU', 'Carbon' and 'Food' represent land management conditions of Business-As-Usual, carbon storage and food security.

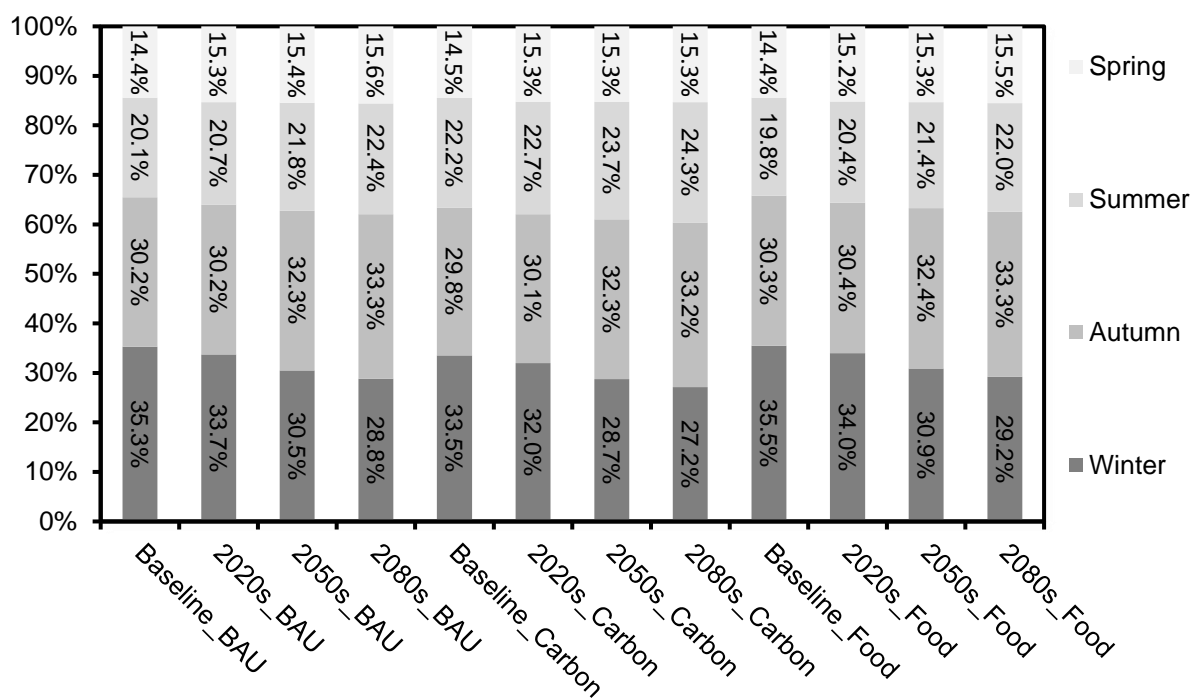
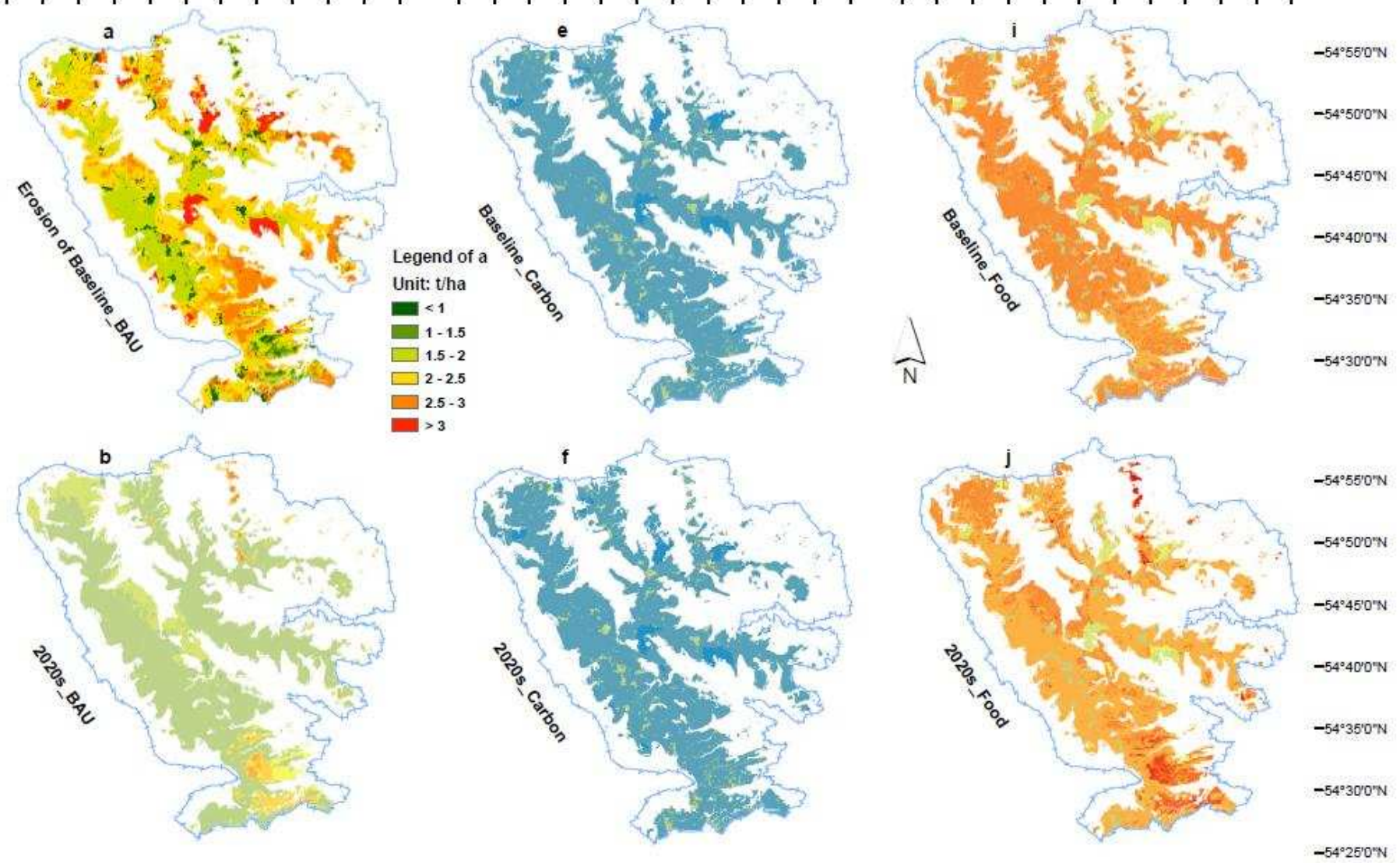


Figure 6 Predicted seasonal distribution of erosion averaged over the whole blanket peat-covered area of the North Pennines. 'Baseline', '2020s', '2050s' and '2080s' represent the climate condition of 1961-1990, 2010-2039, 2040-2069 and 2070-2099, while 'BAU', 'Carbon' and 'Food' represent land management conditions of Business-As-Usual, carbon storage and food security.

2°40'0"W 2°30'0"W 2°20'0"W 2°10'0"W 2°0'0"W 1°50'0"W 2°40'0"W 2°30'0"W 2°20'0"W 2°10'0"W 2°0'0"W 1°50'0"W 2°40'0"W 2°30'0"W 2°20'0"W 2°10'0"W 2°0'0"W 1°50'0"W



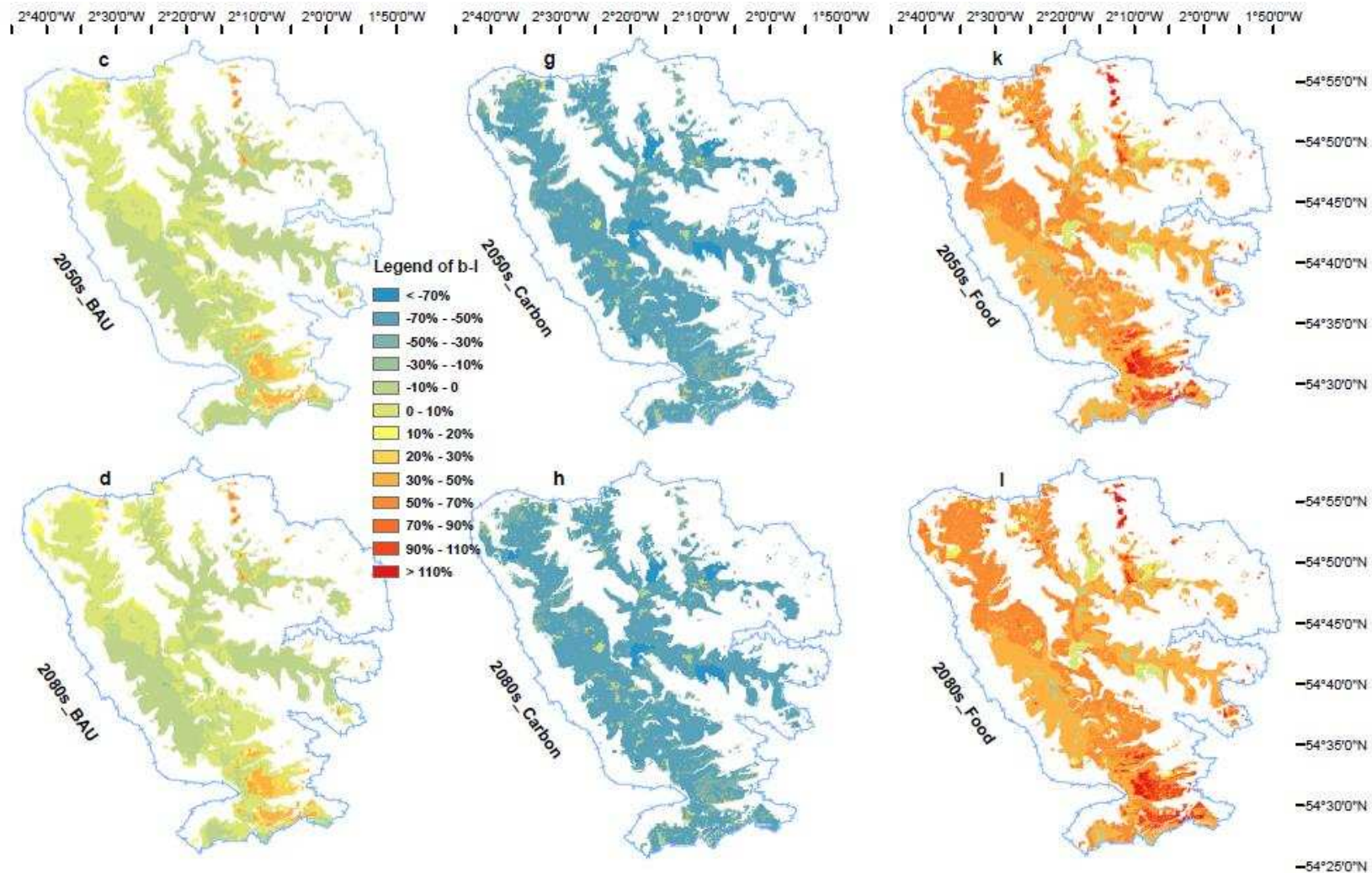
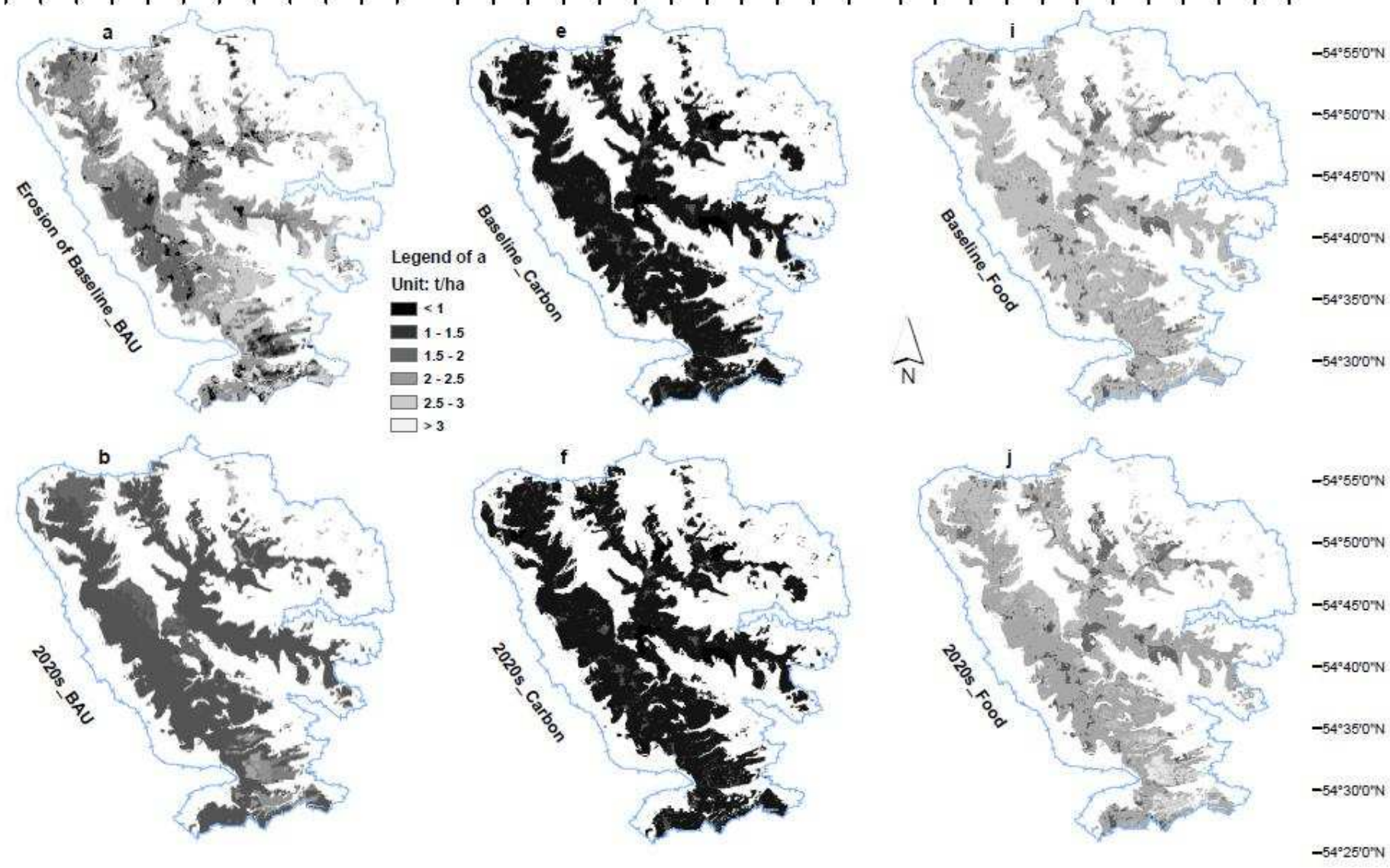
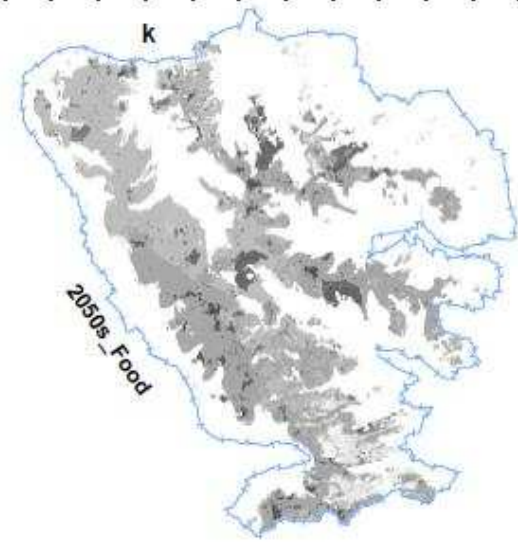
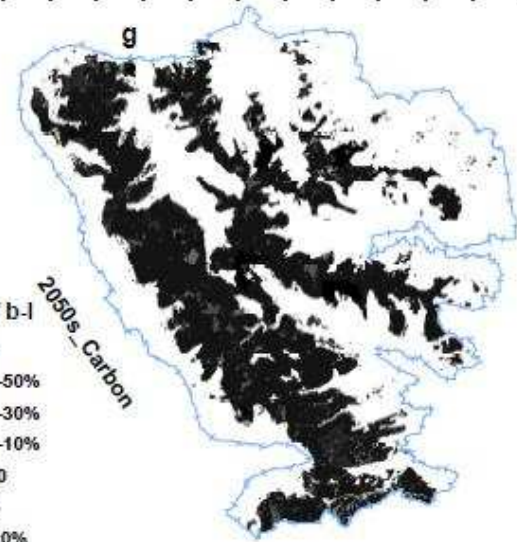
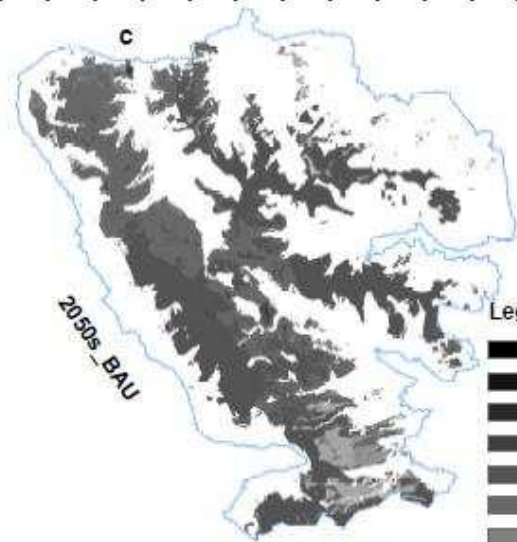


Figure 7 Predicted mean annual erosion under the 'Baseline_BAU' scenario (a) and changes of mean annual erosion from the 'Baseline_BAU' scenario for other scenarios (b-l). 'Baseline', '2020s', '2050s' and '2080s' represent the climate condition of 1961-1990, 2010-2039, 2040-2069 and 2070-2099, while 'BAU', 'Carbon' and 'Food' represent management conditions of Business-As-Usual, carbon storage and food security.

2°40'0"W 2°30'0"W 2°20'0"W 2°10'0"W 2°0'0"W 1°50'0"W 2°40'0"W 2°30'0"W 2°20'0"W 2°10'0"W 2°0'0"W 1°50'0"W 2°40'0"W 2°30'0"W 2°20'0"W 2°10'0"W 2°0'0"W 1°50'0"W



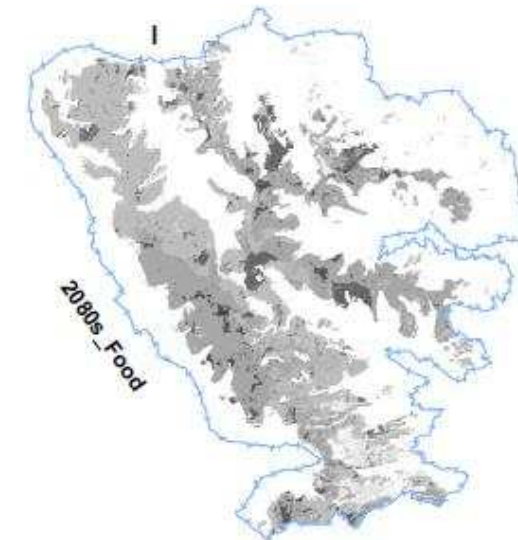
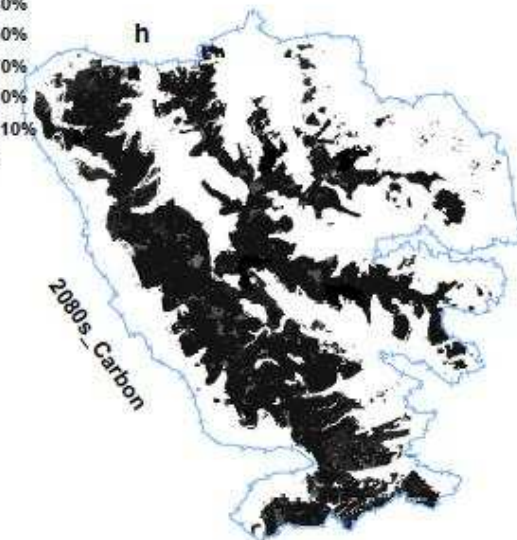
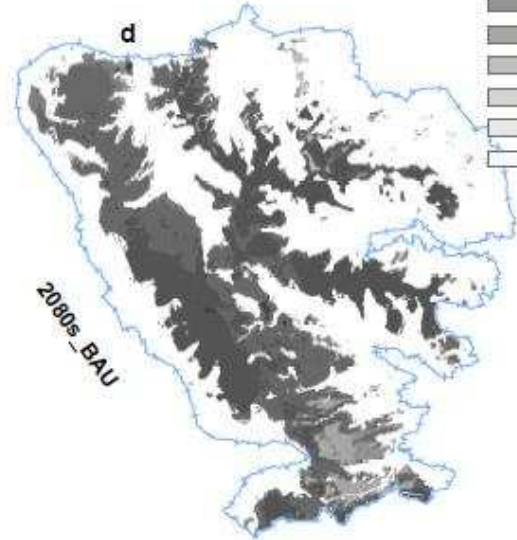
2°40'0"W 2°30'0"W 2°20'0"W 2°10'0"W 2°0'0"W 1°50'0"W 2°40'0"W 2°30'0"W 2°20'0"W 2°10'0"W 2°0'0"W 1°50'0"W 2°40'0"W 2°30'0"W 2°20'0"W 2°10'0"W 2°0'0"W 1°50'0"W



-54°55'0"N
-54°50'0"N
-54°45'0"N
-54°40'0"N
-54°35'0"N
-54°30'0"N

Legend of b-l

- < -70%
- 70% - -50%
- 50% - -30%
- 30% - -10%
- 10% - 0
- 0 - 10%
- 10% - 20%
- 20% - 30%
- 30% - 50%
- 50% - 70%
- 70% - 90%
- 90% - 110%
- > 110%



-54°55'0"N
-54°50'0"N
-54°45'0"N
-54°40'0"N
-54°35'0"N
-54°30'0"N
-54°25'0"N

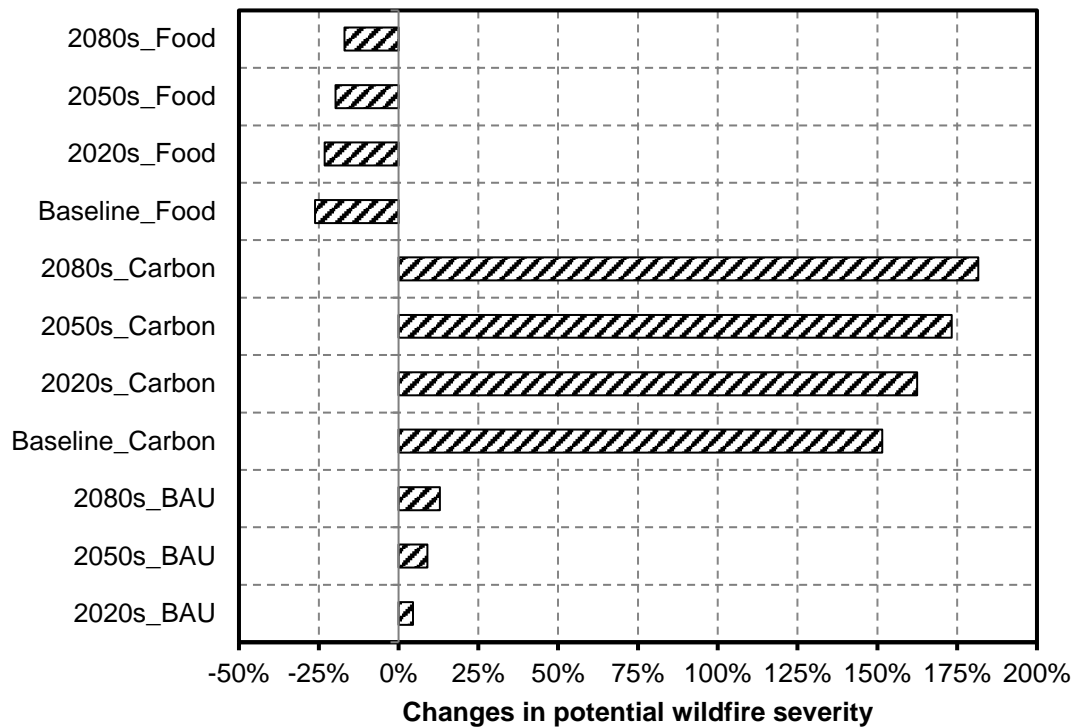


Figure 8 Predicted response of mean annual potential wildfire severity in blanket peatlands of the North Pennines to environmental change. 'Baseline', '2020s', '2050s' and '2080s' represent the climate condition of 1961-1990, 2010-2039, 2040-2069 and 2070-2099, while 'BAU', 'Carbon' and 'Food' represent land management conditions of Business-As-Usual, carbon storage and food security