



This is a repository copy of *A geomorphological overview of glacial landforms on the Icelandic continental shelf*.

White Rose Research Online URL for this paper:
<http://eprints.whiterose.ac.uk/10366/>

Article:

Spagnolo, M. and Clark, C.D. (2009) A geomorphological overview of glacial landforms on the Icelandic continental shelf. *Journal of Maps* , 2009. pp. 37-52. ISSN 1744-5647

<https://doi.org/10.4113/jom.2009.1049>

Reuse

Unless indicated otherwise, fulltext items are protected by copyright with all rights reserved. The copyright exception in section 29 of the Copyright, Designs and Patents Act 1988 allows the making of a single copy solely for the purpose of non-commercial research or private study within the limits of fair dealing. The publisher or other rights-holder may allow further reproduction and re-use of this version - refer to the White Rose Research Online record for this item. Where records identify the publisher as the copyright holder, users can verify any specific terms of use on the publisher's website.

Takedown

If you consider content in White Rose Research Online to be in breach of UK law, please notify us by emailing eprints@whiterose.ac.uk including the URL of the record and the reason for the withdrawal request.



eprints@whiterose.ac.uk
<https://eprints.whiterose.ac.uk/>

Glacial Geomorphology of the Icelandic Continental Shelf

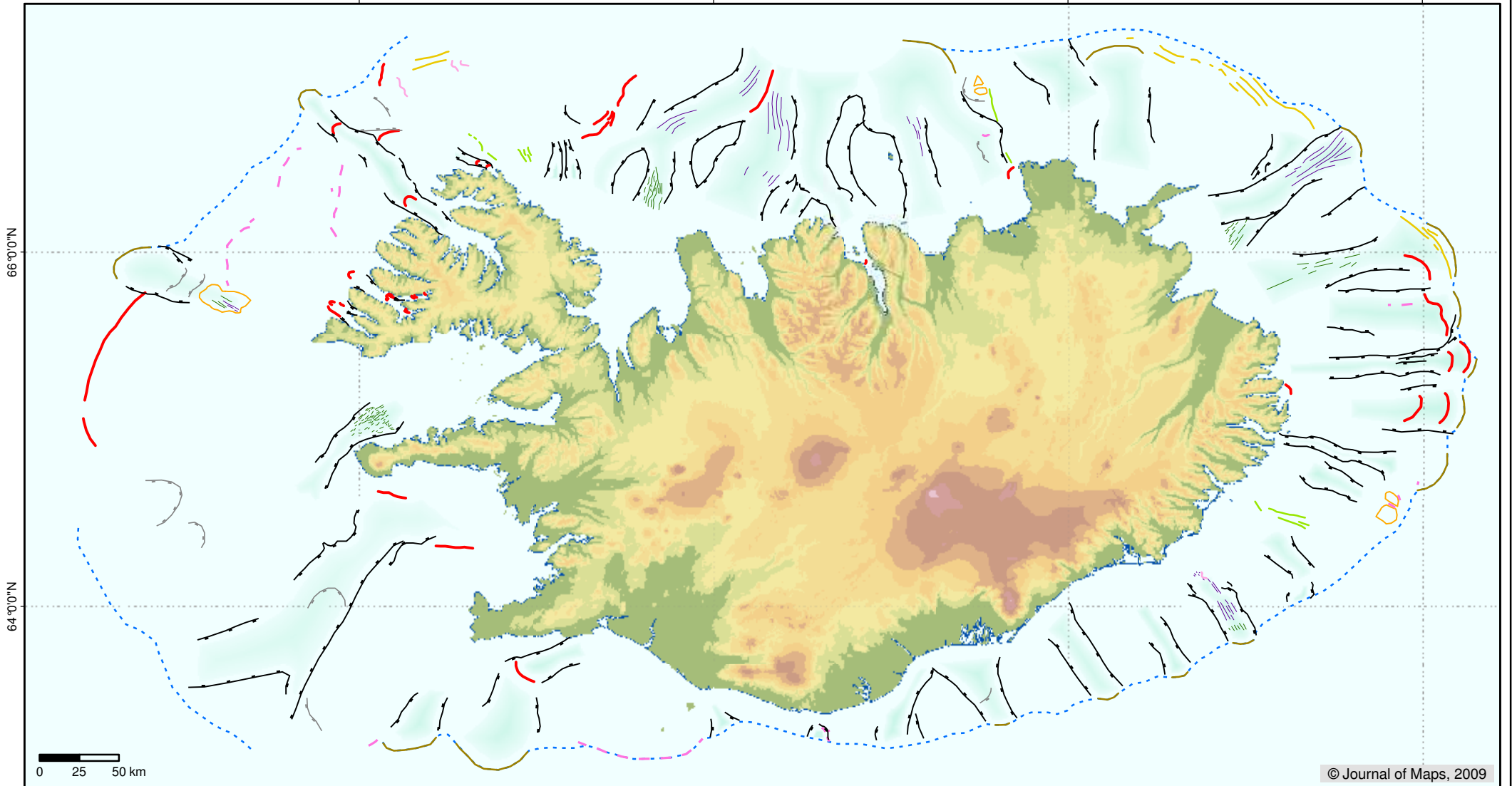
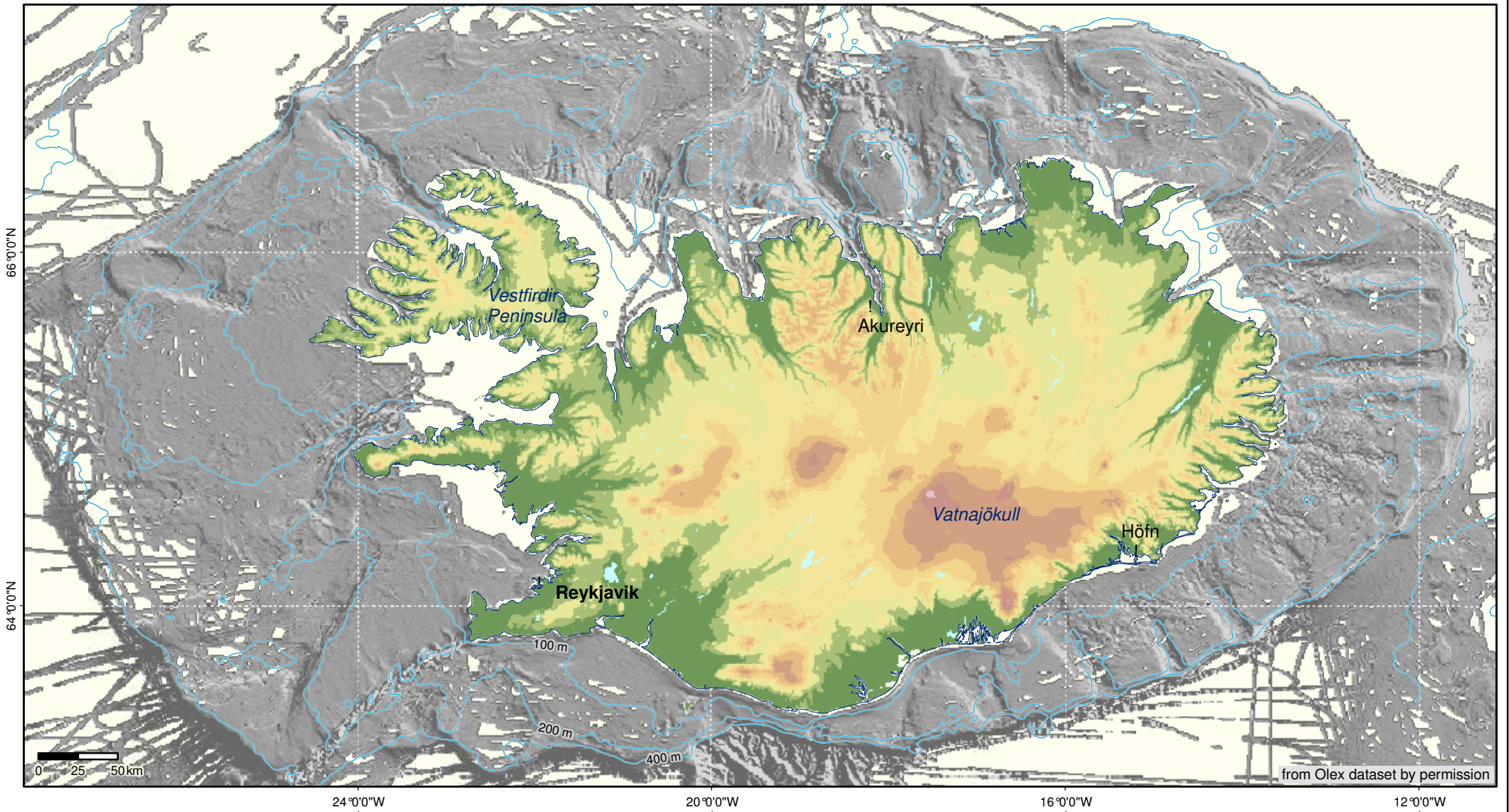
Projected coordinate system
Equidistant Cylindrical

Matteo Spagnolo & Chris D. Clark

Map datum
WGS 84

Department of Geography
University of Sheffield

Mapped on shaded images derived from Olex 5 m bathymetric DTM



Olex data

- shaded bathymetry
- no data
- 200 m isobaths from IBCAO
- elevation from GTOPO30
- shelf break (if visible)

Glacial landforms

- trough edge and axis
- bulging trough mouth
- streamlined drift
- streamlined bedrock
- moraine
- speculative*
- moraine
- melt water channel
- esker

Other landforms (origin uncertain)

- other prominent break of slope
- enclosed depression
- shelf-break groove

Denmark Strait
North Atlantic Ocean
0 500 km
IBCAO bathymetry from Jakobsson et al. 2008