

This is a repository copy of *Widening Access to Postgraduate Study and the Professions::Technical Supplement to the Understanding the Student strand report*.

White Rose Research Online URL for this paper:

<https://eprints.whiterose.ac.uk/103361/>

Version: Published Version

Monograph:

Hancock, Sally orcid.org/0000-0001-8488-2765, Wakeling, Paul orcid.org/0000-0001-7387-4145 and Hampden-Thompson, Gillian orcid.org/0000-0002-4882-4565 (2015)

Widening Access to Postgraduate Study and the Professions::Technical Supplement to the Understanding the Student strand report. Research Report. University of York, Department of Education

Reuse

This article is distributed under the terms of the Creative Commons Attribution-NonCommercial-NoDerivs (CC BY-NC-ND) licence. This licence only allows you to download this work and share it with others as long as you credit the authors, but you can't change the article in any way or use it commercially. More information and the full terms of the licence here: <https://creativecommons.org/licenses/>

Takedown

If you consider content in White Rose Research Online to be in breach of UK law, please notify us by emailing eprints@whiterose.ac.uk including the URL of the record and the reason for the withdrawal request.

HEFCE Postgraduate Support Scheme 2014/15

Widening Access to Postgraduate Study and the Professions

Technical Supplement to the *Understanding the Student* strand report

Sally Hancock, University of York

Paul Wakeling, University of York

Gillian Hampden-Thompson, University of Sussex

1. Background to the study

The growing consensus over the economic, social and cultural benefits of postgraduate study has not been matched by a detailed understanding of who progresses to postgraduate study, and why. Similarly limited is our understanding of the barriers to postgraduate study. The lack of robust empirical data on these issues is particularly concerning in the context of a reported decline in UK postgraduate student numbers in recent years (see, for example *Times Higher Education* 10 January 2013), and has led to calls for more research on postgraduate education by a number of organisations (1994 Group 2012; British Academy 2012; HEC 2012; Lindley and Machin 2013; Milburn 2012; NUS 2012).

Existing research

Existing research into postgraduate education in the UK shows that only a minority of postgraduate students enter their course immediately following their undergraduate degree (House 2010; HEFCE 2013a, 2013b Wakeling and Hampden-Thompson 2013). This finding calls into question the validity of many commonly-cited surveys of graduates, which report graduate activity soon after the completion of an undergraduate degree (e.g. the Destinations of Leavers from Higher Education survey [DLHE], which takes place six months after graduation). As a result, we know relatively little about graduates' activities over later years, and universities remain largely uninformed as to the prior activities of returning postgraduates.

The deficiency of data on both graduate pathways and entrants to postgraduate study presents a significant hindrance to the development of meaningful policies aimed at widening participation to postgraduate study. It is clear that inequalities exist in the transition to postgraduate study. Recent research conducted by Wakeling and Hampden-Thompson (2013) noted that even after academic attainment is controlled for:

- men are more likely than women to progress to both postgraduate taught and research courses;
- certain ethnic groups are less likely to progress (notably Black Caribbean and Bangladeshi groups);

- graduates of more selective universities typically have higher rates of progression;
- graduates from lower socio-economic backgrounds remain underrepresented in the postgraduate population

In order to provide rigorous new evidence on the factors associated with both progression and non-progression to postgraduate study, the Understanding the Student strand (UtS) sought to develop three large quantitative datasets. In what follows, a detailed overview of the research process is presented.

2. Research design

Three distinct datasets were created for the project:

1. **The Pathways Beyond Graduation (PbG) survey:** a large-scale survey of first-degree alumni from the six consortium institutions who graduated in 2009 or 2012
2. **The Pathways to Postgraduate Study (PtPG) survey:** a large-scale survey of first-year taught postgraduates students at the six consortium institutions in each of the academic years 2013/14 and 2014/15
3. **The Admissions Study:** an analysis of application data from the six consortium institutions, including an analysis of both applicant characteristics and course applications

The key activities undertaken by the research team are summarised in the project timeline (table 2.1), overleaf.

2014	March	Development of Pathways Beyond Graduation (PbG) survey Expert review and cognitive testing of PbG survey
	April	Pilot PbG survey
	May	Development and approval of final PbG survey PbG survey live
		Development of Pathways to Postgraduate Study (PtPG) survey (2013/14 cohort) Institutional review of PtPG 2013/14 survey
	June	Development and approval of final PtPG survey
	June - July	PtPG 2013/14 survey live
	August	Institutions review Admissions Study data model Cleaning and preliminary analysis of PbG survey data
	September	Development of PtPG survey (2014/15 cohort) Institutional review and approval of PtPG 2014/15 survey
		First look report for PbG survey shared with institutions
	October	Institutions submit Admissions Study data Cleaning and preliminary analysis of PtPG 2013/14 survey data
	October- November	PtPG 2014/15 survey live
	November	First look report for PtPG 2013/14 survey shared with institutions
2015	December - February	Cleaning and preliminary analysis of Admissions Study data
	March	First look report for Admissions Study data shared with institutions
	April - July	Main analysis and report drafting

Table 2.1 Project timeline

Ethical issues

Ethical approval was obtained from the University of York's Education Ethics Committee. Approval was secured for each aspect of data collection. Survey participants provided informed consent directly to the research team, and their participation in the research was voluntary. Data from the 2014/15 Pathways to Postgraduate Study survey were shared in aggregate form with an independent research organisation, CFE, who were commissioned by the UtS strand to carry out further research on recipients of the Postgraduate Support Scheme (PSS) scholarships at the six consortium institutions.

Prior to the collection of admissions data, an information sharing agreement was prepared for consortium institutions, setting out the terms and conditions for the transfer, storage and analysis of data. Each dataset contained only anonymised data, and was stored securely according to EU data protection regulation. All outputs arising from the strand present findings in such a way so that individuals retain anonymity.

3. Sampling

3.1 Selection of institutions

Institutions were chosen to participate in the study on the basis of an existing partnership forged under the Postgraduate Support Scheme. The six English higher education institutions featured in the study had formed a consortium and were cooperating in the areas of academic innovation, finance and intervention, with the shared aim of proposing solutions to achieve fair access to postgraduate study. Cross-institutional organisational protocols, together with dedicated project managers, were therefore already established when data collection commenced, which greatly facilitated the implementation of the surveys and collation of admissions data.

Each participating university is a member of the Russell Group¹. The institutions vary in size, with postgraduate numbers ranging from <5,000 to >10,000; and, in terms of

¹ For further information, please see <http://www.russellgroup.ac.uk/>

geography, spanning the North West, the North East and the West Midlands of England. Together, they account for at least 10% of UK-domiciled postgraduate students outside London. Four institutions are based in medium to large cities, while two are campus universities. While it is important to note the distinctive characteristics of the participating institutions, many of the pressures facing these institutions, particularly with regard to postgraduate study, affect the UK higher education sector as a whole – for example, concerns over the recruitment and retention of UK-domiciled students and under-represented groups, and of postgraduate finance and the effect of rising undergraduate tuition fees. It is therefore likely that the findings arising from this study will have resonance beyond its empirical base. However, it is not possible formally to generalise our findings beyond the six institutions.

3.2 Selection of alumni, students and application data

The Pathways Beyond Graduation (PbG) survey targeted all UK-domiciled first-degree alumni from the six institutions, who had graduated in 2009 or 2012. Both cohorts would have been charged an annual undergraduate tuition fee of £3,000+, with 2009 alumni being the first year group subject to this level of fees. The difference between these two groups in terms of time since graduation was also of interest. The 2009 cohort were approximately five years post-graduation at the time of the survey, and we would expect around three-quarters of those progressing to postgraduate study to have done so within this time². The 2012 cohort had graduated approximately 18 months prior to the survey launch. We hypothesised that a significant number of these alumni would be comparatively less established in a particular career, and therefore likely to be considering the individual benefits of participating in postgraduate study.

The Pathways to Postgraduate Study (PtPG) survey ran twice, targeting all first-year UK domiciled taught postgraduates at the six institutions, in the academic years 2013/14 and 2014/15. This included students on Taught Master's degrees (e.g. MA, MSc), or courses leading to either a Postgraduate Certificate in Education with

² Recent research by HEFCE reported that 75% of those who progress to postgraduate study do so within four years of completing their undergraduate degree (HEFCE 2013a).

Qualified Teacher Status, other Postgraduate Certificate or a Postgraduate Diploma. Integrated Master's students were not included in the PtPG sample since these are first degrees and funded in the same manner as other undergraduate qualifications by HEFCE.

The Admissions Study included all applications to taught postgraduate programmes at the six consortium institutions during the 2013/14 and 2014/15 application cycles (i.e. applicants intending to begin their postgraduate course in either Autumn 2014 or 2015). All applications were included in the sample, regardless of the eventual outcome (i.e. offer, enrolment). If an applicant had applied to more than one course over the two application cycles, up to three applications were included (see section 4.3 for further details).

As per the PbG and PtPG surveys, non-UK domiciled students were excluded from the exercise. This decision reflects the study's focus on the demand for postgraduate study from the home market, and on anticipated policy developments relating to the financing of UK postgraduates. Accordingly, Integrated Master's students were also excluded from the Admissions Study data model. Applicants to Research Master's programmes were only included if the taught component of their course exceeded the requirement to produce original work³. This meant that students applying to MRes degrees were included in the Admissions Study population.

4. Data collection

4.1 Pathways Beyond Graduation survey

The Pathways Beyond Graduation (PbG) survey aimed to expand current understanding of progression to postgraduate study by examining the background characteristics, present circumstances and motivations of alumni who had progressed to postgraduate courses, as well as the background characteristics, present circumstances and rationales of those who had not progressed. The latter

³ MRes qualifications are taught degrees intended as preparation for a PhD (as part of a 1+3 route, for instance). These are typically not research degrees since the taught component is larger than the dissertation.

group was of particular interest to the research team, since the reasons for non-progression are not well explained by existing research. The research team was especially concerned to ascertain the extent to which non-progression relates to a matter of choice (i.e. alumni do not wish to enter further study), or signifies an unrealised aspiration (i.e. alumni do wish to progress, but are constrained by issues of information, finance, prior academic performance, confidence, and so on).

The PbG survey collected data on: personal characteristics; academic background; graduating and present debt from undergraduate degree; activities since graduation, including applications to, offers for, and participation in postgraduate study; recent employment history; and, future plans. A key feature of the survey design was that it enabled the research team to explore associations between background characteristics and the post-graduation choices and trajectories of alumni⁴.

Regarding postgraduate entrants, the survey allowed for a detailed examination of: the extent to which graduates change subject area or institution at postgraduate level; the factors associated with immediate or delayed entry; the place of postgraduate study amid graduates' early labour market experiences; the association between undergraduate debt and progression; and, strategies for financing postgraduate tuition fees and maintenance. Having agreed the scope of the survey with consortium members, the research team developed the survey, including question design and the use of question and branching logic iteratively over a period of approximately six weeks.

Most of the survey questions were closed; so to say, respondents chose from a range of prescribed answers, with the option to select 'Other' and provide additional information in an open text box. Depending on the nature of the questions, some permitted only one answer, whereas other questions followed a multiple-choice design; allowing for several answers to be selected. A number of questions took the form of a scale, where respondents indicate the strength of their agreement or disagreement with a selection of statements (e.g. relating to motivations for

⁴ Background characteristics recorded in the PbG and PtPG surveys matched the widening participation performance indicators collected by the Higher Education Statistics Agency (for further information, see <https://www.hesa.ac.uk/pis>).

undertaking postgraduate study). Closed questions were preferred in this instance since they reduce both survey completion time and cognitive load, which means the survey is both less intrusive and less demanding for the participant (Cohen et al. 2011: p. 382). Closed questions were considered beneficial for the research team since they reduce the likelihood of coding error, and generate frequencies which can then be subjected to statistical analysis. A small number of necessary open questions were included in the survey; for example, regarding future plans, since the research team did not wish to in any way limit participants' responses to this issue. The questionnaire was developed with reference to existing instruments used in the Futuretrack study⁵ and statutory data collection undertaken by institutions to meet the requirements of the Higher Education Statistics Agency (HESA).

Following the development of a first draft, the research team implemented three different quality checks in the month prior to the survey launch. The first of these was a period of expert review. Expert reviewers were selected at the discretion of each consortium institution, and included both academic and support staff. Expert reviewer comments were fed back to the research team, and necessary amendments to the survey design and questions followed. Concurrent to this, the research team conducted cognitive interviews with alumni from one of the consortium institutions ($n=5$). Cognitive interviews involve checking the comprehension and interpretation of proposed survey questions, with individuals within or similar to those in the research population. Cognitive interviews are found to strengthen survey design, particularly with regard to ensuring question clarity and content validity (for further information, see for example Cohen et al. 2011, pp. 188-9). The research team considered feedback from these interviews, which included comments on question ordering and answer options, and a number of changes were made to the survey as a result.

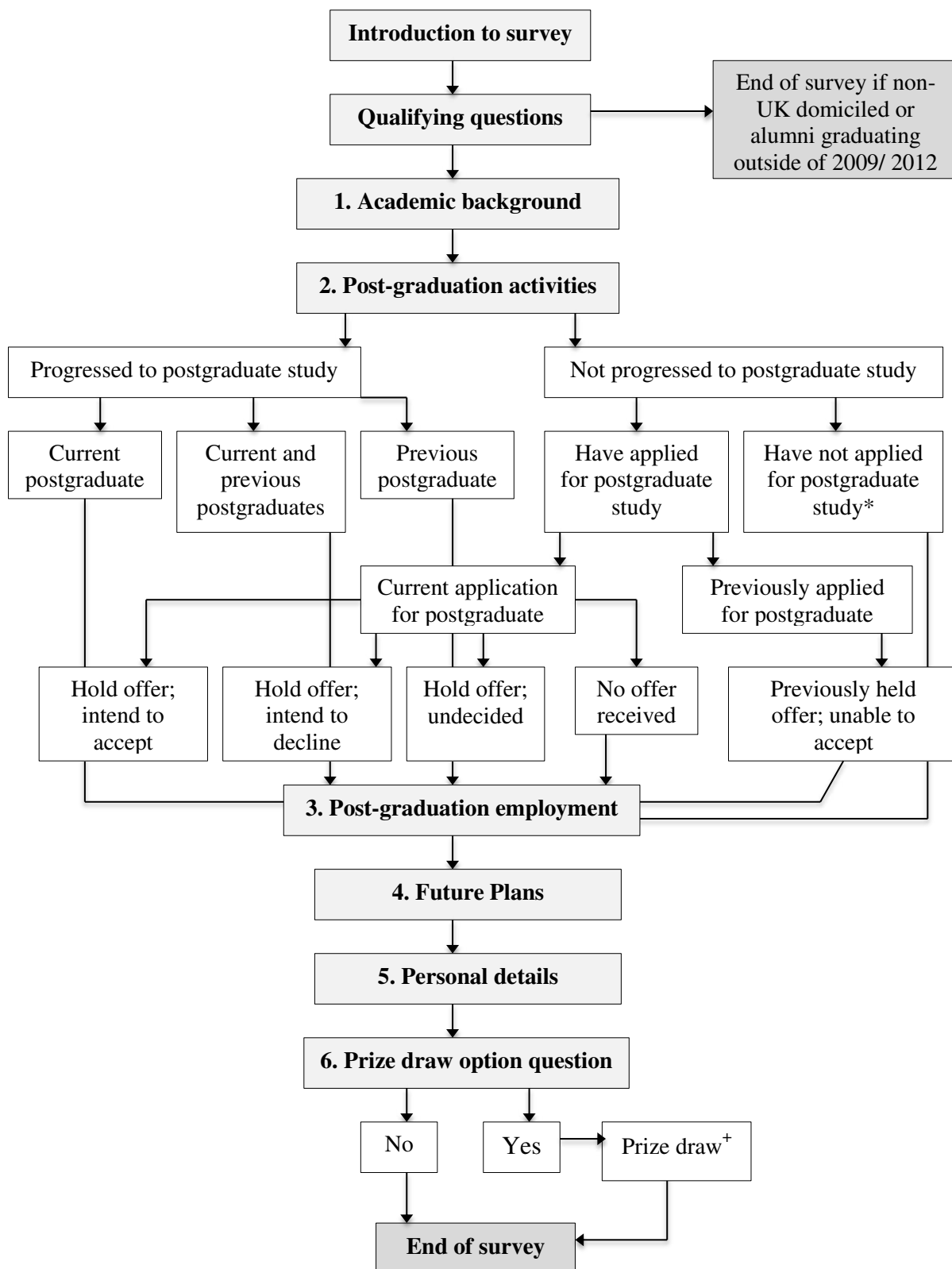
Following on from these two stages of consultation, a pilot survey was launched for two weeks in late April 2014. The pilot was distributed to alumni from two of the consortium institutions, who had graduated in either 2010 or 2011. As was the case for all surveys undertaken for the UtS strand, the pilot was hosted online, using

⁵ See: <http://www2.warwick.ac.uk/fac/soc/ier/futuretrack/> We gratefully acknowledge advice and support from Professor Kate Purcell and Ritva Ellison from the Futuretrack project.

Qualtrics software. As with the later PbG and PtPG surveys, institutions were asked to distribute the survey to eligible participants directly. To ensure that each participant could respond to the survey only once, institutions were instructed to append a unique identifier to the survey invitation URL. This measure enabled the research team to delete duplicates and target the mid-point survey reminders appropriately. Reminders were employed since these are known to increase response rates (Dillman et al. 2009). The use of a unique identifier also ensured the integrity of the incentives scheme associated with the survey. For details of the incentives and prize draws administered for the UtS surveys, please see Appendix A.

The pilot survey closed at the end of April. The research team assessed the feedback provided by participants (in the form of an open text box at the end of survey), and examined completion rates and average completion time. The pilot was considered a success, having attracted a valuable number of eligible respondents who completed the survey fully ($n=621$). The research team made minor amendments, before each institution approved a final draft of the survey in early May. A full copy of the final survey can be found in Appendix B. Figure 4.1, overleaf, illustrates the survey path.

The survey launched in mid-May 2014, and was hosted online for four weeks. As with the pilot survey, alumni were contacted directly by their institutions to participate, and each received a URL with unique identifier. Alumni were incentivised to participate with guaranteed low-value rewards for the first 150 returns per institution, and an end of survey 'star prize' draw per institution (see Appendix A for further details). Three targeted reminders were sent to eligible participants at regular intervals; and, as expected, reminders were associated with a 'boost' in responses during the pilot survey. The survey closed with an overall response rate of 8.4% ($n=2,882$ [eligible responses only]). Table 4.1, below, details survey responses for each institution (institutions are anonymised; labeled from A – F with a randomly assigned letter).



*These respondents were asked whether, and why, they would consider applying for postgraduate study in section 4, Future Plans.

⁺ The prize draw was conducted separately, so as to ensure respondents' personal details were not linked to survey data; thus retaining anonymity.

Figure 4.1 Pathways Beyond Graduation survey path

Institution	Survey invitations (n)	Responses (n)	Response rate (%)
F	3,417	388	11.4
C	5,083	569	11.2
B	3,445	368	10.7
D	8,125	630	7.8
A	6,011	443	7.4
E	8,134	484	6.0
Consortium total	34,215	2,882	8.4

Table 4.1 Pathways Beyond Graduation survey response rates, by institution

4.2 Pathways to Postgraduate Study survey

The Pathways to Postgraduate Study (PtPG) survey was particularly concerned to examine motivations for undertaking further study, as well as factors perceived to have facilitated this transition and future intentions following on from the completion of a postgraduate course. As with the PbG survey, a critical component of the survey design was the detailed recording of background characteristics and present personal circumstances, allowing the research team to identify any relationships which may exist between these variables and other outcomes, such as programme or institution selection, source of finance and future aspirations.

As noted earlier, the PtPG survey aimed to gather new evidence in relation to demand for and access to postgraduate study. Existing data were considered limited with regard to these issues. There is, for example, no reliable socio-economic indicator in the Higher Education Statistics Agency's postgraduate student record (House, 2010). Institutions tend not to collect data on the prior and present employment and personal circumstances of enrolling postgraduates (e.g. whether or not they have caring responsibilities). Institutions typically do ask applicants to specify an intended funding source, but this may change by the time an applicant enrolls; and, in many cases, postgraduates will rely upon numerous sources to balance their tuition and living costs. Recent research by HEFCE notes that, in particular, very little is known about the circumstances of part-time postgraduates, and how the decision to pursue further study relates to the prior and present activities additionally undertaken by these individuals (HEFCE, 2013b).

The PtPG study collected data on: personal characteristics; academic background; graduating and present debt from undergraduate degree; current postgraduate course; motivations for postgraduate study; activities since graduation, including any previous postgraduate courses, employment history; and, future plans. Many sections of the PtPG survey overlapped with the PbG survey and, where appropriate, the research team applied the same questions and logic decisions to this survey also. Thus, questions followed the format of the PbG survey, in that most were closed, with a combination of single and multiple choice, and scales. For the reasons previously stated, open questions were kept to a minimum. A first draft of the survey was prepared by late May, and sent to consortium institutions for review.

Institutions approved a final draft by early June, and the PtPG survey for the academic year 2013/14 launched in mid-June 2014; running for four weeks until mid-July. Individual institutions once again administered the distribution of the survey directly, appending a unique identifier to the survey invitation link provided by the research team. As with the PbG survey, an incentive scheme and prize draw, detailed in Appendix A, were established; and institutions sent out up to two targeted reminders in order to increase participation. The PtPG 2013/14 survey attracted an overall response rate of 12.9% (n=1,171 [eligible responses only]). Returns for each institution are detailed in Table 4.2, below.

Institution	Survey invitations (n)	Responses (n)	Response rate (%)
F	689	218	31.6
D	864	172	19.9
C	1,124	198	17.6
A	2,013	234	11.6
E	2,370	193	8.1
B	2,019	156	7.7
Consortium total	9,079	1,171	12.9

Table 4.2 Pathways to Postgraduate Study survey (2013/14) response rates, by institution

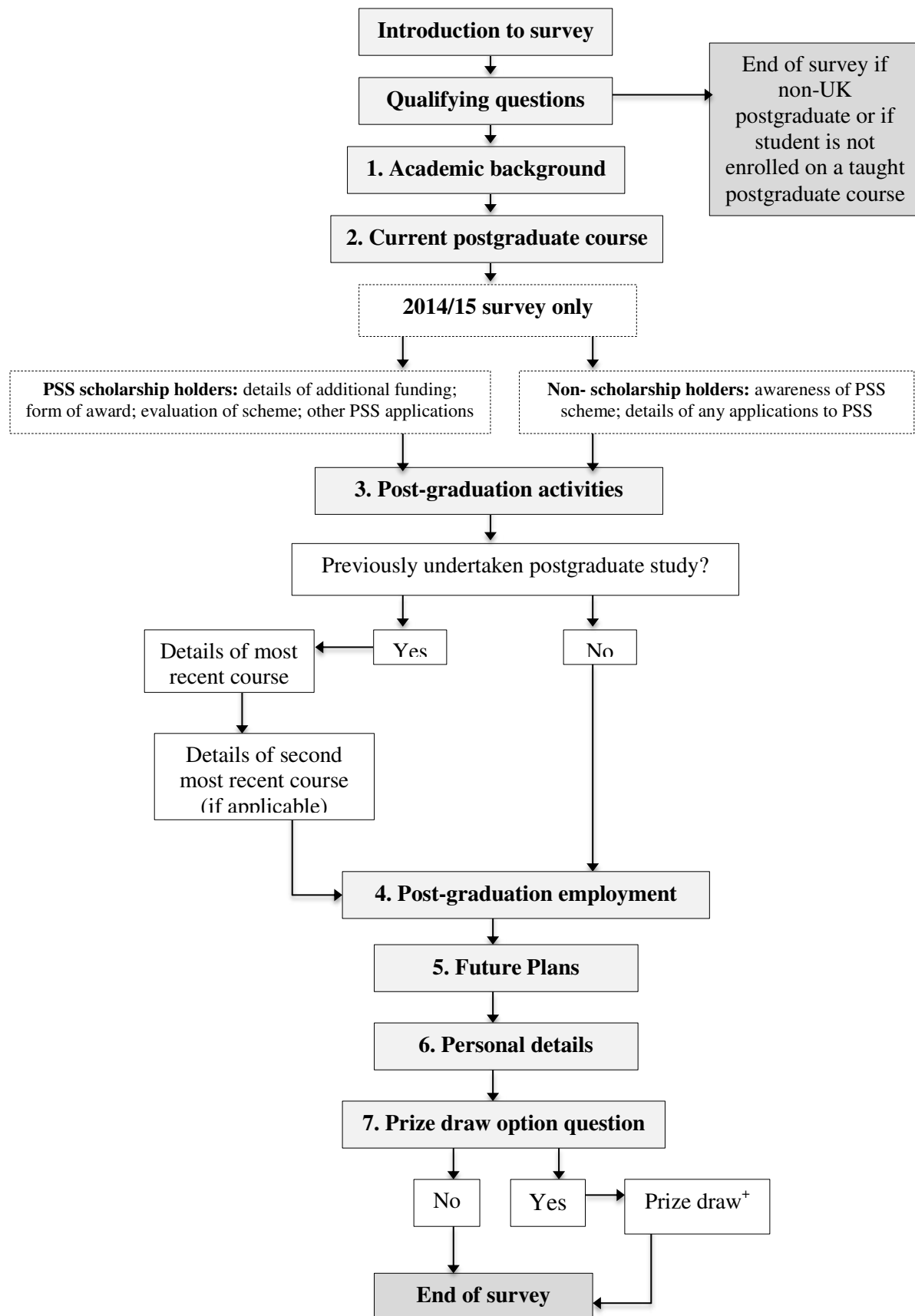
For the academic year 2014/15, two PtPG surveys were developed. The content of this survey repeated that used for 2013/14 postgraduates, but included a new section relating to Postgraduate Support Scheme (PSS) scholarships. As a result,

two surveys were prepared: one intended for scholarship holders, and one for all other taught postgraduates. Scholarship holders were asked how they had found out about the scheme, whether they had made applications to other PSS initiatives, and for their comments on both positive and negative aspects of the scholarship scheme. All other postgraduates were asked if they had heard about the scheme, and whether they had applied. A copy of the 2014/15 PtPG Scholarships Holders' survey can be found in Appendix C. Overleaf, Figure 4.2, shows the survey path for the PtPG survey, noting the additional content of the 2014/15 survey.

First drafts of both PtPG 2014/15 surveys were complete by September 2014. Institutions reviewed these surveys in the same month and a final, approved version was prepared by late September. The survey launched in mid-October 2014, to coincide with the beginning of the new academic year. As per the previous PtPG survey, an accompanying incentive scheme and prize draw was established (see Appendix A); and institutions sent out targeted reminders. The survey was live for four weeks, and closed with a response rate of 24.3% ($n=2,166$ [eligible responses only]). Table 4.3, below, details the survey returns for each institution.

	Survey invitations (n)	Responses (n)	Response rate (%)
F	813	352	43.3
C	1,015	295	29.1
D	1,304	353	27.1
A	1,506	388	25.8
B	1,157	269	23.2
E	3,130	509	16.3
Consortium total	8,925	2,166	24.3

Table 4.3 Pathways to Postgraduate Study survey (2014/15) response rates, by institution



⁺ The prize draw was conducted separately, so as to ensure respondents' personal details were not linked to survey data; thus retaining anonymity.

Figure 4.2 Pathways to Postgraduate Study survey path

4.3 The Admissions study

The Admissions Study constituted the final aspect of data collection within the UtS strand. The study was designed to capture the characteristics of: a) applicants to postgraduate courses; b) offer holders; and, c) enrolling students, over the 2013/14 and 2014/15 application cycles.

The Admissions Study was considered a critical component of the UtS strand, since very little is currently known about the characteristics of those who apply to postgraduate study, and the variables associated with receiving an offer and enrolling. Existing research on postgraduate admissions tends to present analysis of aggregate numbers. The Admissions Study sought to examine the potential interactions between applicants' background characteristics and outcomes (i.e. offers, enrolments), in order to identify potential inequalities and other significant differences associated with varying applicant outcomes.

All UK domiciled applicants (and all applications made by these individuals) during the 2013/14 and 2014/15 application cycles were included in the Admissions Study. A first draft of the data model, detailing the requested data, was circulated to institutions in August 2014. Institutions reviewed this model and provided feedback to the York research team. A final model, which can be seen in Appendix D, was prepared in September 2014. In summary, institutions agreed to provide information on the following:

- **Applicants:** gender; birth year; disability status; correspondence postcode; nationality; highest qualification year; school type; socio-economic status; institutional widening participation indicator
- **Applications:** date application submitted; mode of study; course title; subject area; qualification type; offer; application to the postgraduate support scheme (2014-15 application cycle only); enrolment; funding source

	Institutions						Total
	A	B	C	D	E	F	
Applicants							
Total	6,882	5,954	4,213	7,307	10,357	4,290	39,003
Applications							
2012/13	3,735	3,264	2,297	3,917	5,333	2,502	21,048
2013/14	3,816	3,244	2,509	4,529	5,631	2,111	21,840
Total	7,551	6,508	4,806	8,446	10,694	4,613	42,888

Table 4.4 Admissions study returns, by institution

Institutions submitted these data at the end of October 2015 using a secure drop-box facility. The research team undertook initial checking of the data, leading to some necessary clarifications from institutions, and with some additional submissions occurring. The initial dataset consisted of information on 39,519 applicants and 43,196 applications. Following receipt, a process of data validation and cleaning was undertaken to ensure consistency across the institutions and to check data quality. This resulted in the deletion of 516 duplicate applicant records and 174 duplicate applications.

In a relatively small number of cases, an applicant had made more than three applications in the period. In such cases, if an application had resulted in enrolment, that application was kept. The remaining applications for every applicant with more than three applications were each assigned a random number and then sorted into descending order by applicant. The three applications records with the lowest number were kept (two for applicants who had enrolled), with others dropped. Table 4.4 above details the final numbers of applicants and applications for each institution.

5 Data analysis

5.1 Survey data

Data from the PbG and PtPG surveys were subjected to a process of cleaning and analysis. After each survey had closed, data were downloaded from the online survey software as SPSS files. Data were then cleaned, meaning that ineligible submissions from individuals outside of the research population were removed from the dataset, and that variables and values were labelled and formatted for analysis. Datasets for each institution were eventually combined in order to form one complete dataset for each survey. Once cleaned and merged, these SPSS files were then imported into the statistical software Stata, which was used to perform all subsequent analysis.

With the exception of the deletion of ineligible responses, each survey dataset retained all variables and responses from the online surveys. However, the research team created several new variables for the purposes of analysis. For example, undergraduate and postgraduate course titles were re-coded based on subject area into the following categories: Arts and Humanities; Social Sciences; Science, Technology, Engineering and Mathematics (STEM); and, Other. Participants' age was transformed from continuous to categorical data (i.e. from years into age groups). Postcode data were used to create the new variables of POLAR2 and POLAR3, to indicate the participation rate of young people in higher education within a local area⁶. Information on participant and parental employment status and occupation were used to create new variables indicating socio-economic status (labelled as 'Achieved NS-SEC' for alumni/ postgraduates, and 'Parental NS-SEC' for parents)⁷.

Missing values, which occur when a respondent provides no answer to a question, or states that they refuse to provide information, were excluded from analysis.

⁶ For further information, please see <https://www.hefce.ac.uk/analysis/yp/POLAR/>

⁷ Respondents' own and parental occupations were entered as free text which was then converted to SOC2010 classifications using CASCOT software, developed by the Warwick Institute for Employment Research (see: <http://www2.warwick.ac.uk/fac/soc/ier/software/cascot/>). NS-SEC was derived from the SOC2010 categories in combination with employment status using the method detailed by ONS. For further information, please see <http://www.ons.gov.uk/ons/guide-method/classifications/current-standard-classifications/soc2010/soc2010-volume-3-ns-sec--rebased-on-soc2010--user-manual/index.html>

'First look' reports for the PbG survey, containing descriptive statistics of un-weighted survey data were prepared for consortium partners in September 2014. Individual reports were provided for each institution, containing anonymous comparator information for the other consortium institutions. First look reports for the PtPG survey (2013/14 cohort), containing similar content, were shared with partners in October 2014.

Bias analysis

We undertook a bias analysis to assess how, and to what extent, respondents differed from individuals who were eligible to but did not respond to the survey.

For the PbG survey, institutions provided population data for 2009 and 2012 alumni on key variables. This allowed for a bias analysis of the aggregate data; so to say, the distribution of population data on certain key variables was compared to the distribution within the survey sample. This comparison is shown in table 5.1, overleaf, which shows the bias analysis for each institution (anonymised and labelled from A – F) and for each cohort (2009 and 2012). As can be seen, for the variables undergraduate degree classification, gender and subject area there are considerable discrepancies between percentages reported for the sample and population. In order to reduce this bias, data were weighted so that the sample better reflected the research population. The approach taken, and calculation of these weights, is detailed in the next section.

An aggregate bias analysis was performed for both PtPG surveys (2013/14 and 2014/15 cohorts). This comparison was undertaken using data submitted as part of the Admissions Study. Tables 5.2 and 5.3 (below) show the results of the bias analysis for each survey cohort. As with the PbG survey data, prior to commencing inferential analysis, the research team calculated and applied weights to these data in order to reduce bias. The method and calculation for these weights is detailed in the following section.

2009 Sample Population (%)													
	A		B		C		D		E		F		
Sex													
Male	47.3	45.5	44.3	47.0	41.0	47.6	34.5	37.5	39.6	46.5	38.6	45.6	
Female	51.3	54.5	54.9	53.0	59.0	52.4	65.5	62.5	58.8	53.5	60.3	54.6	
Mode of study													
Full-time	98.2	94.2	97.0	96.2	99.3	99.8	96.9	95.4	99.5	97.1	100.0	98.4	
Part-time	1.8	3.5	3.0	3.4	0.7	0.22	3.1	4.6	0.5	2.9	0.0	1.6	
Degree class													
I	20.2	16.1	23.0	21.1	24.1	13.7	24.6	14.4	26.3	15.0	25.8	21.5	
lii	61.3	56.0	61.5	61.4	54.5	52.8	59.2	58.5	53.6	53.5	53.6	55.3	
liii	10.7	17.8	11.1	13.6	15.2	18.6	11.5	20.2	12.4	19.1	15.0	17.5	
III	0.6	1.1	3.0	2.8	2.1	2.2	1.6	2.3	0.5	2.5	2.6	4.7	
Ordinary	1.8	1.0	0.7	0.0	1.4	0.0	1.6	0.6	5.2	0.1	1.6	1.0	
Pass	0.0	0.0	0.0	1.0	0.0	0.9	0.0	4.1	0.0	3.3	0.0	0.0	
Subject													
Arts and Humanities	25.6	30.1	35.8	39.4	27.4	25.6	39.8	38.5	16.5	17.8	28.7	40.8	
Social Sciences	17.2	24.0	22.1	26.7	18.6	28.4	14.9	25.5	15.1	24.8	16.6	21.0	
STEM	46.9	46.0	30.5	34.0	32.7	46.0	26.7	36.0	47.4	57.4	42.7	38.1	
Other	9.4	0.0	11.6	0.0	21.2	0.0	18.6	0.0	21.1	0.0	12.1	0.0	
2012 Sample Population (%)													
	A		B		C		D		E		F		
Sex													
Male	37.1	45.5	39.8	45.5	38.2	47.4	33.8	63.5	43.2	44.5	41.9	46.8	
Female	62.4	54.4	58.8	54.5	60.5	52.5	64.7	36.5	56.4	55.5	57.8	53.2	
Mode of study													
Full-time	98.3	95.8	97.3	97.2	100.0	100.0	98.6	96.9	99.6	97.1	99.7	99.6	
Part-time	0.9	17	2.2	2.8	0.0	0.0	1.2	3.1	0.4	2.89	0.3	0.9	
Degree class													
I	28.5	19.5	21.9	24.6	28.1	16.3	26.0	17.8	27.1	17.9	28.2	22.0	
lii	60.3	57.7	64.3	59.6	55.7	54.7	60.3	59.2	52.7	53.5	55.5	58.1	
liii	8.2	14.5	12.5	12.8	7.9	14.4	11.5	14.9	13.7	17.1	11.9	16.0	
III	0.4	1.0	0.5	1.4	1.3	1.8	0.5	1.6	0.7	2.4	2.2	3.5	
Ordinary	0.9	0.8	0.0	0.0	1.8	0.0	0.5	0.5	2.2	0.0	0.3	0.4	
Pass	0.0	0.0	0.0	1.6	0.0	1.9	0.0	5.0	0.0	1.7	0.0	0.0	
Subject													
Arts and Humanities	28.0	31.8	31.1	40.3	23.1	21.4	30.9	38.4	16.4	22.5	30.8	38.9	
Social Sciences	10.4	23.2	16.9	25.6	16.1	29.2	11.8	25.2	13.0	26.1	20.9	27.9	
STEM	45.6	44.9	37.2	34.1	38.7	49.4	30.9	36.4	49.0	51.4	32.2	33.2	
Other	15.9	0.0	14.9	0.0	22.0	0.0	26.4	0.0	21.6	0.0	16.1	0.0	

Table 5.1 Pathways Beyond Graduation Survey non-response bias

2013/14 Sample Population (%)												
	A		B		C		D		E		F	
Sex												
Male	27.3	37.8	42.6	42.7	43.4	46.4	40	43.9	37.8	39.7	39.5	43.9
Female	72.2	62.2	56.7	57.3	55.0	53.6	59.3	56.1	61.6	60.3	57.8	56.1
Mode of study												
Full-time	61.2	82.1	61.2	65.5	66.0	68.4	98.2	72.1	67.6	80.0	83.1	90.4
Part-time	38.0	11.6	38.1	34.4	33.5	29.5	1.2*	25.9	31.3	14.0	16.4	4.8
	-	6.3	-	0.1	-	2.1	-	1.9	-	6.0	-	4.8
School type												
State	84.9	91.0	84.1	73.0	84.0	65.8	84.9	83.1	79.9	84.2	84.2	88.1
Independent	12.1	9.0	14.6	22.8	13.9	23.9	13.4	16.9	19.0	15.8	13.5	11.9
Other	3.0	0.0	1.3	4.2	2.1	10.3	1.7	0	1.1	0.0	2.3	0.0
Subject												
Arts and Humanities	26.3	11.3	13.0	5.7	17.8	12.5	19.6	13.0	15.8	18.2	35.6	39.4
Social Sciences	47.4	45.6	64.1	73.1	40.2	30.4	42.4	51.1	38.3	44.2	33.9	30.7
STEM	26.3	43.0	22.8	21.2	42.1	57.1	38.0	35.9	45.8	37.6	30.4	29.9
Type of postgraduate course												
Taught Master's degree	88.0	72.4	70.5	47.7	77.8	61.2	85.5	56.0	86.0	54.2	89.0	71.1
Postgraduate Diploma	4.7	17.4	4.5	5.3	4.0	4.9	2.9	5.4	5.7	2.0	0.9	0.1
Postgraduate Certificate	3.9	10.1	7.1	26.6	8.1	31.9	0.0	27.0	1.0	28.4	2.3	25.2
PGCE leading to QTS	3.4		18.0		10.1		11.6		7.3		7.8	
Research Masters degree	-	-	-	0.1	-	-	-	0.2	-	6.8	-	3.6
Masters of Business Administration	-	-	-	4.5	-	2.0	-	0.9	-	-	-	-
Other	-	0.1	-	15.8	-	0.1	-	10.5	-	8.7	-	-

Table 5.2. Pathways to Postgraduate Study survey (2013/14) non-response bias

Note: * part-time students were mistakenly omitted from the distribution of surveys at this institution.

Weighting

In order to correct for bias in the data, a set of poststratification weights were calculated. This approach uses existing respondents to represent their nonrespondent peers (Gelman and Carlin, 2002). It requires good information about the base population, which in this case was available for both surveys through institutional alumni and student record databases. Using these records it was possible to generate expected cell values in a cross-tabulation of variables of interest. Weights are derived such that when multiplied by the achieved response, the proportion in a given cell is equal to the proportion in the population for that cell⁸. This corrects for bias through systematic differences in the characteristics of nonrespondents, but it does rely on the strong assumption that nonrespondents do not differ from respondents in unobserved characteristics.

⁸ The weight is the reciprocal of the probability of response for a given cell.

2014/15 Sample Population (%)												
	A		B		C		D		E		F	
Sex												
Male	30.9	37.6	34.2	40.0	44.6	45.0	37.3	42.0	33.5	40.3	38.6	42.4
Female	67.6	62.4	62.3	60.0	54.5	55.0	60.7	58.0	64.1	59.7	60.7	57.6
Mode of study												
Full-time	77.4	76.5	76.4	81.9	79.4	72.1	84.6	76.2	64.1	80.3	80.3	88.4
Part-time	22.6	16.9	22.7	17.9	18.7	26.6	15.1	22.4	34.7	14.2	19.4	5.1
Distance learning	-	6.5	-	0.2	-	1.2	-	1.5	-	5.5	-	6.5
School type												
State	82.9	84.0	81.1	70.8	80.8	66.5	85.3	80.5	80.1	85.4	82.3	86.1
Independent	14.1	14.6	16.7	22.2	16.5	15.3	11.2	19.5	17.2	14.6	15.0	13.9
Other	3.0	1.4	2.2	7.0	2.7	18.2	3.5	0.0	2.7	0.0	2.7	0.0
Subject												
Arts and Humanities	25.6	10.7	17.8	5.4	23.2	10.8	23.3	11.2	15.0	15.0	31.0	35.4
Social Sciences	37.2	44.2	65.0	76.6	36.6	32.8	41.1	56.9	48.3	47.3	35.8	37.8
STEM	37.2	45.1	17.2	17.9	40.1	56.5	35.6	31.9	36.6	37.7	33.2	26.8
Type of postgraduate course												
Taught Master's degree (e.g. MA, MSc)	88.4	74.0	69.4	55.2	82.4	67.3	86.1	54.8	85.9	60.3	84.7	77.2
Postgraduate Diploma	6.7	18.7	1.5	1.8	2.7	4.7	1.7	4.3	2.2	4.4	4.6	3.7
Postgraduate Certificate	3.4	6.6	1.5	29.0	5.4	26.0	0.3	29.6	2.2	2.2	1.7	17.7
PGCE leading to QTS	1.6		27.6		9.5		11.9		9.8		9.1	
Research Masters degree	-	-	-	0.0	-	-	-	0.5	-	6.9	-	1.3
Masters of Business Administration	-	-	-	3.3	-	1.2	-	1.7	-	-	-	-
Other	-	0.7	-	10.7	-	0.8	-	9.3	-	6.3	-	-

Table 5.3. Pathways to Postgraduate Study survey (2014/15) non-response bias

For both the PbG and PtPG surveys two sets of weights have been derived. One set provides weights for each institution and is used when undertaking calculations which involve comparisons across the six consortium universities. The other gives a weight across the whole consortium and is used when aggregating the responses across institution. For the alumni survey, respondents were weighted according to the classification they achieved on their first degree. For the PtPG survey, type of postgraduate course was used as the weighting variable. The derived weights give a good approximation to population values on other variables.

As can be seen from Tables 4.1 – 4.3, response rates were disappointing, although not substantially out of line with similar surveys. Student surveys with the very highest response rates, such as the Destination of Leavers from Higher Education (DLHE) survey and the National Student Survey have very substantial institutional and third party support which was far beyond that available to our project. Response rates to the PtPG survey approached and in some cases slightly exceeded those

achieved in the Higher Education Academy's Postgraduate Taught Experience Survey. We think the PtPG 2014/15 survey achieved the highest response rate of our surveys because of (i) accumulated experience across the project in the institutions of targeting survey invitations; (ii) students being early in their programmes at the point of the survey and hence better placed to respond; (iii) possibly a greater awareness of the topic given publicity about scholarships and the Postgraduate Support Scheme in general at the time of the survey.

5.2 The Admissions study

Admissions data from each institution were merged together to form one large dataset, which contained information on both applicants and applications. This necessitated the creation of a new variable, indicating which consortium institution a particular applicant or application was associated with. Doing so ensured that from this single dataset, comparative analysis could be run on a cross-institutional basis.

Where necessary, data were re-coded from text into numeric form and, as with the survey data, some new variables were created. Examples of these new variables include: age group; POLAR2 and POLAR3 (from applicants' correspondence postcode); subject area (based on postgraduate course title); and, nationality (British or Non-British). Missing values were also assigned a numeric value. Once these amendments were complete, data were imported into Stata for statistical analysis.

First look reports, containing descriptive statistics in a format similar to those created for the PbG and PtPG surveys, were distributed to institutions in March 2015. Substantive inferential analysis followed, focusing on the potential interactions between background characteristics, offers and enrolments in order to identify the presence of inequalities and other significant associations between certain variables (e.g. subject area, mode of study, funding source) and differing applicant outcomes. Since the Admissions Study data constituted the full population of applicants and applications for two cycles specified in the study, rather than a sample of this population, it was not necessary to run a bias analysis ahead of undertaking inferential analysis.

References

1994 Group (2012) *The Postgraduate Crisis*. London: 1994 Group.

The British Academy (2012). *Postgraduate Funding: the Neglected Dimension*. London: The British Academy.

Cohen, L., Manion, L., Morrison, K. and Bell, R. (2011) *Research Methods in Education (Seventh Edition)*. London: Routledge.

Dillman, D. A., Smyth, J. D. and Christian, L. M. (2009) *Mail and Internet Surveys: the Tailored Design Method (Third Edition)*. New York: John Wiley and Sons.

Gelman, A. and Carlin, J. B. (2002). Poststratification and weighting adjustments. In R. M. Groves, D. A. Dillman, J. L. Eltinge and R. J. A. Little, eds. *Survey Nonresponse*, New York: John Wiley and Sons, pp. 289 – 302.

Higher Education Commission (HEC) (2012). *Postgraduate Education: an Independent Inquiry by the Higher Education Commission*. London: Higher Education Commission.

HEFCE (2013a) *Trends in transition from first-degree to postgraduate study: qualifiers between 2002-03 and 2010-11*. Bristol: HEFCE.

Higher Education Funding Council for England (HEFCE) (2013b) *Trends in Transition from First Degree to Postgraduate Study: Qualifiers Between 2002-03 and 2010-11*. Bristol: HEFCE.

House, G. (2010) *Postgraduate Education in the UK*. Oxford: Higher Education Policy Institute and The British Library.

Lindley, J. and Machin, S. (2013) *The Postgraduate Premium: Revisiting Trends in Social Mobility and Educational Inequalities in Britain and America*. London: The Sutton Trust.

Milburn, A. (2012). *University Challenge: How Higher Education Can Advance Social Mobility: a progress report by the Independent Reviewer on Social Mobility and Child Poverty*. London: The Cabinet Office.

National Union of Students (NUS) (2012). *Steps Towards a Fairer System of Postgraduate Funding in England*. London: NUS.

Wakeling, P. and Hampden-Thompson, G. (2013). *Transition to higher degrees across the UK: an analysis of regional, institutional and individual differences*. York: Higher Education Academy.

Appendix A. Survey incentives and prize draws

	Incentives	
	Each institution	Cross-consortium
Pilot survey	£5 Amazon voucher for first 60 respondents	-
PbG survey	£5 Amazon voucher for first 150 respondents Prize draw of 1 x £500 Amazon voucher	-
PtPG Study survey (2013/14)	£5 Amazon voucher for first 100 respondents	Prize draw of 1 x £500 and 2 x £200 Amazon vouchers
PtPG Study survey (2014/15)	£5 Amazon voucher for first 100 respondents*	Prize draw of 1 x £500 and 2 x £200 Amazon vouchers

* PSS scholarship holders were excluded from the incentive scheme since cooperation with research relating to the PSS scheme was a condition of their award. These students were however eligible for entry into the consortium prize draw.

Appendix B. Pathways Beyond Graduation survey



Introduction

Welcome to the Pathways Beyond Graduation Survey

This survey is intended for UK alumni of the University of Manchester, who completed their undergraduate degree in 2009 or 2012.

All respondents who qualify and complete the survey can enter into a prize draw to win a £500 Amazon voucher. The first 150 respondents who qualify and complete the survey will receive a £5 Amazon voucher.

This survey has been commissioned as part of a government-funded project to enable UK universities, policy-makers and funding bodies to better understand the activities of alumni in the years immediately following graduation.

The UK government has acknowledged that access to postgraduate study is an increasingly important aspect of the widening participating agenda and social mobility more generally. Your answers in this survey will generate a better understanding of who progresses to postgraduate study, and why.

Completing the survey

This survey will ask about your activities since graduating, including any employment you may have undertaken and whether you have entered into postgraduate study. We are particularly interested in the extent to which graduates considered progression to postgraduate study.

On average, the survey takes 20 minutes to complete, depending on how many questions are relevant to you.

There are four sections to the survey:

1. Academic background
2. Activities since graduating
3. Future plans
4. Personal characteristics

Please answer as many questions as you can. Except for those which direct you through the survey, none of the questions are compulsory. Where answers are provided, please select the option that is the best fit to your situation, or enter your response into the 'other' box, where appropriate. The survey will not allow you to move backwards; however, there is an option to save your responses and complete the survey at a future time. The option to 'save and continue' works by placing a cookie* on your browser which keeps track of your survey progress.

All responses must be submitted by midnight of Thursday 12th June, 2014.

The information you provide will be treated in confidence and stored securely according to EU data protection regulation. The survey has received full approval from the ethics committee of the Department of Education, University of York, which is leading the survey. No outputs arising from the project will cite findings in a way that enables you, your university or employers to be identified, nor will such details be passed to any other individuals or organisations, including the alumni offices of participating universities. By beginning the survey, you acknowledge that you have read this information and agree to participate in this research.

If you have any questions about the survey or the project, please contact sally.hancock@york.ac.uk.

*A cookie is a small text file which helps your web browser navigate through a particular website. The cookie can then be read back later by the web browser as required. The use of cookies is a convenient way of allowing a computer to remember specific information relating to a website which has been visited. For further information about cookies including a detailed [definition](#), please consult [All About Cookies](#).

Block 1 (Qualifying questions)

In which year did you complete your undergraduate degree at the University of Manchester?

2009

☐

2012

☐

Other

☐

Thank you for your interest in the Pathways Beyond Graduation Survey. We do not require any further information from you at this stage.

At the University of Manchester, were you a UK ('home' student), an EU student or an international student?

UK student (i.e. 'home student')

☐

EU student

☐

International student

☐

Thank you for your interest in the Pathways Beyond Graduation Survey. We do not require any further information from you at this stage.

Block 2 (Academic background)

Section 1. Academic background

In this first section of the survey, we will ask about your academic background up until the point that you completed your undergraduate degree.

Thinking back to when you were 14, which type of school did you attend?

- ☐ State secondary school
 ☐ Don't know
☐ Selective state secondary school (e.g. grammar school)
 ☐ Prefer not to answer
☐ Private/independent school
 ☐ Other (please specify)
☐ State secondary special school (e.g. for children with disabilities or special needs)

What was your highest qualification when you entered undergraduate study? (In some cases, more than one may apply, e.g. you may have an A Level and a BTEC. Please select all that apply.)

- ☐ GCE A-levels or Scottish (SQC) Higher or Advanced Higher levels
 ☐ Open University (OU) credits
☐ International Baccalaureate (IB) diploma or certificate
 ☐ Mature student admitted on basis of previous experience (without formal APEL/APL) and/or institution's own entrance examinations
☐ BTEC or SVQ
 ☐ Modern Apprenticeship (Including Advanced Modern Apprenticeship)
☐ GNVQ
 ☐ No formal qualification
☐ GCSE/'O' level qualifications only; SCE 'O' grades and Standard grades
 ☐ Don't know
☐ Access Course (QAA recognised)
 ☐ Prefer not to answer
☐ Access Course (not QAA recognised)
 ☐ Other (please specify)
☐ Foundation course at Further Education (FE) level

Prior to your undergraduate study, did you participate in a programme aimed at widening participation to higher education? Examples of these programmes include the AimHigher programme, Sutton Trust summer schools or an event organised by a university, e.g. as part of an Access programme. Please select all that apply.

- ☐ AimHigher programme
 ☐ Event organised by school
☐ University supported Access programme
 ☐ Sutton Trust summer school
☐ Did not attend a widening participation programme(s)
 ☐ Don't know
☐ Event organised by university
 ☐ Prefer not to answer
☐ Residential course organised by university
 ☐ Other (please specify)

Please specify which type of undergraduate degree you completed.

- ☐ Bachelor's degree (e.g. BA, BSc, BEd, LLB)
☐ Integrated/ undergraduate Master's degree (e.g. MBIol, MChem, MEng, MMath, MPhys, M Psych, MSci)
☐ Other (please specify)

Please specify which type of honours degree you completed.

- ☐ Single Honours (i.e. one subject)
☐ Joint or Dual Honours (i.e. two subjects)
☐ Combined honours (e.g. two or more subjects)
☐ Don't know
☐ Other (please specify)

Please specify the subject of your undergraduate degree.

If your degree subject is not listed here, please select 'other' and you will be prompted to enter this on the next page.

If 'other', please specify the subject of your undergraduate degree.

Please specify the two main subjects of your undergraduate degree.

If one or both of your degree subjects are not listed here, please select 'other' and you will be prompted to enter this on the next page.

Subject 1

Subject 2

If 'other', please specify the subject(s) of your undergraduate degree.

As an undergraduate, were you a full time or part time student?

- ☐ Full time student
- ☐ Part time student
- ☐ Sometimes full time and sometimes part time

Did you study on campus or by distance learning?

- ☐ On campus
- ☐ On campus with one year placement
- ☐ By distance learning
- ☐ Sometimes on campus and sometimes by distance

Which class of undergraduate degree were you awarded?

- ☐ First Class Honours
- ☐ Upper Second Class Honours
- ☐ Lower Second Class Honours
- ☐ Unclassified Second Class Honours
- ☐ Third Class Honours
- ☐ Ordinary Degree (unclassified)
- ☐ Did not complete
- ☐ Other (please specify)

How did you pay for your undergraduate tuition fees? Please select all that apply.

- | | |
|--|--|
| <input type="checkbox"/> Formal loan (e.g. from Student Loans Company, bank) | <input type="checkbox"/> Government grant |
| <input type="checkbox"/> Loan from family/ personal acquaintance | <input type="checkbox"/> Income from a job |
| <input type="checkbox"/> Gift from family/ personal acquaintance | <input type="checkbox"/> My own savings |
| <input type="checkbox"/> Fee waiver (e.g. scholarship) | <input type="checkbox"/> Other (please specify) <input type="text"/> |
| <input type="checkbox"/> Sponsorship (e.g. employer, armed services) | |

How did you pay for your living costs during your undergraduate studies? Please select all that apply.

- | | |
|--|--|
| <input type="checkbox"/> Formal loan (e.g. from Student Loans Company, bank) | <input type="checkbox"/> Government grant |
| <input type="checkbox"/> Loan from family/ personal acquaintance | <input type="checkbox"/> Income from a job |
| <input type="checkbox"/> Gift from family/ personal acquaintance | <input type="checkbox"/> My own savings |
| <input type="checkbox"/> Scholarship or bursary | <input type="checkbox"/> Other (please specify) <input type="text"/> |
| <input type="checkbox"/> Sponsorship (e.g. employer, armed services) | |

How much total student debt did you have when you completed your undergraduate degree that you needed to repay?

Please include only student debt from your undergraduate studies. Do not include mortgages or existing debt prior to your undergraduate study, or debt accrued from post-graduate activities, e.g. postgraduate study.

- ☐ None
- ☐ Up to £4,999
- ☐ £5,000-£9,999
- ☐ £10,000-£14,999
- ☐ £15,000-£19,999
- ☐ £20,000-£24,999
- ☐ £25,000-£29,999
- ☐ Over £30,000
- ☐ Don't know
- ☐

☐ Prefer not to say

How much total student debt do you have left to repay now?

- ☐ None
- ☐ Up to £4,999
- ☐ £5,000-£9,999
- ☐ £10,000-£14,999
- ☐ £15,000-£19,999
- ☐ £20,000-£24,999
- ☐ £25,000-£29,999
- ☐ Over £30,000
- ☐ Don't know
- ☐ Prefer not to say

Block 3 (Post-graduation activities)

Section 2. Post-graduation activities

This section of the survey focuses on your activities since completing your undergraduate degree. We ask about employment, postgraduate study and other activities which you may have undertaken.

Which one of the following activities best describes what you are doing in your life now?

- | | |
|---|--|
| <input type="radio"/> Further study at postgraduate level (e.g. Masters, PhD) | <input type="radio"/> Retired |
| <input type="radio"/> Further study not at postgraduate level | <input type="radio"/> Travelling |
| <input type="radio"/> Employment (full-time or part-time) | <input type="radio"/> Looking after the home |
| <input type="radio"/> Paid internship | <input type="radio"/> Period of unemployment |
| <input type="radio"/> Unpaid internship | <input type="radio"/> Caring for dependents |
| <input type="radio"/> Unpaid volunteering (not including internship) | <input type="radio"/> Other activity (please specify) <input type="text"/> |
| <input type="radio"/> Started/continued my own business | |

Since you completed your undergraduate degree, which of the following activities have you undertaken? Please select all that apply.

- | | |
|--|---|
| <input type="checkbox"/> » Further study at postgraduate level (e.g. Masters, PhD) | <input type="checkbox"/> » Retired |
| <input type="checkbox"/> » Further study not at postgraduate level | <input type="checkbox"/> » Travelling |
| <input type="checkbox"/> » Employment (full-time or part-time) | <input type="checkbox"/> » Looking after the home |
| <input type="checkbox"/> » Paid internship | <input type="checkbox"/> » Period of unemployment |
| <input type="checkbox"/> » Unpaid internship | <input type="checkbox"/> » Caring for dependents |
| <input type="checkbox"/> » Unpaid volunteering (not including internship) | <input type="checkbox"/> » Other activity (please specify) <input type="text"/> |
| <input type="checkbox"/> » Started/continued my own business | |

Which of the following statements most accurately describes your current situation?

- ☐ I am currently studying at postgraduate level and have not studied at this level before
- ☐ I am currently studying at postgraduate level and have previously studied on a different programme at this level
- ☐ I have previously studied at postgraduate level, but I am not doing so at present
- ☐ Other (please specify)

Block 3a: Current postgraduates

Please answer the following questions about your current postgraduate course.

Please specify the main subject of your postgraduate course.

If your postgraduate course subject is not listed here, please select 'other' and you will be prompted to enter this on the next page.

If 'other', please specify the subject of your current postgraduate course.

At which institution are you studying for your postgraduate course?

If you are undertaking a postgraduate course overseas, please select 'other', and you will be asked to provide details of this course on the next page.

If 'other', please specify the following for your postgraduate course:

Institution

Country

Which type of postgraduate course are you undertaking?

- ☐ Taught Master's degree (e.g. MA, MSc)
- ☐ Research Master's degree (e.g. MPhil, MRes)
- ☐ PhD/DPhil/ Professional Doctorate (e.g. EngD, EdD)
- ☐ PGCE leading to QTS
- ☐ PG Diploma
- ☐ PG Certificate
- ☐ Other (please specify)

As a postgraduate, are you a full time or part time student?

- ☐ Full time student
- ☐ Part time student
- ☐ Sometimes full time and sometimes part time

Do you study on campus or by distance learning?

- ☐ On campus
- ☐ On campus with work placement
- ☐ By distance learning
- ☐ Sometimes on campus and sometimes by distance

Are you currently engaged in any of the following activities, alongside your postgraduate studies? Please select all that apply.

- | | |
|---|---|
| <input type="checkbox"/> Additional study not at postgraduate level | <input type="checkbox"/> Unpaid volunteering |
| <input type="checkbox"/> Employment (full-time or part-time) | <input type="checkbox"/> Travelling |
| <input type="checkbox"/> Paid internship | <input type="checkbox"/> Looking after the home |
| <input type="checkbox"/> Unpaid internship | <input type="checkbox"/> Caring for dependants |
| <input type="checkbox"/> Started/continued my own business | <input type="checkbox"/> Other activity (please specify) <input type="text"/> |

Why did you decide to undertake postgraduate study?

Please select the three most important reasons from the list below.

- | | |
|--|---|
| <input type="checkbox"/> Because there was funding available | <input type="checkbox"/> To change my career |
| <input type="checkbox"/> To expand my knowledge of a chosen subject | <input type="checkbox"/> To develop particular skills |
| <input type="checkbox"/> To fulfil a lifestyle choice | <input type="checkbox"/> To pursue an intellectual interest |
| <input type="checkbox"/> To enhance my earnings | <input type="checkbox"/> To enable progression to a higher degree (e.g. PhD) |
| <input type="checkbox"/> There were no suitable jobs when I graduated from my first degree | <input type="checkbox"/> To delay entry into the labour market |
| <input type="checkbox"/> To gain practical experience | <input type="checkbox"/> To enter a profession which requires or favours this qualification |
| <input type="checkbox"/> To make a greater personal impact on society | <input type="checkbox"/> To progress my career |
| <input type="checkbox"/> To access professional networking opportunities | <input type="checkbox"/> Other (please specify) <input type="text"/> |

How do you pay for your postgraduate tuition fees? Please select all that apply.

☐ Formal loan (e.g. from bank)

☐ Loan from family/ personal acquaintance

☐ Gift from family/ personal acquaintance

☐ Fee waiver (e.g. departmental scholarship)

☐ Sponsorship (e.g. employer, armed services)

☐ Research studentship (e.g. UK Research Council)

☐ Government grant

☐ Income from a job

☐ My own savings

☐ Other (please specify)

How are you paying for your living costs during your postgraduate studies? Please select **all** that apply.

☐ Formal loan (e.g. from bank)

☐ Loan from family/ personal acquaintance

☐ Gift from family/ personal acquaintance

☐ Scholarship or bursary (e.g. departmental scholarship)

☐ Sponsorship (e.g. employer, armed services)

☐ Research studentship (e.g. UK Research Council)

☐ Government grant

☐ Income from a job

☐ My own savings

☐ Other (please specify)

Have you **applied** for any other postgraduate courses? (For example, you may have applied for other postgraduate courses at the time you applied for your current course, or you may have submitted applications previously).

☐ Yes

☐ No

☐ Don't know

☐ Prefer not to answer

Please list up to five postgraduate courses to which you have previously applied (do not include your current course).

	Institution	Main Subject
Course 1	<input type="text"/>	<input type="text"/>
Course 2	<input type="text"/>	<input type="text"/>
Course 3	<input type="text"/>	<input type="text"/>
Course 4	<input type="text"/>	<input type="text"/>
Course 5	<input type="text"/>	<input type="text"/>

From the reasons listed below, please indicate why you chose this postgraduate course over those others to which you applied.

	Agree	Somewhat Agree	Disagree
Funding was available for this course	<input type="radio"/>	<input type="radio"/>	<input type="radio"/>
I picked this course because of its content	<input type="radio"/>	<input type="radio"/>	<input type="radio"/>
Personal reasons (e.g. family, friends or care commitment to dependants informed my choice)	<input type="radio"/>	<input type="radio"/>	<input type="radio"/>
This course has a good reputation	<input type="radio"/>	<input type="radio"/>	<input type="radio"/>
This course offers better employment prospects	<input type="radio"/>	<input type="radio"/>	<input type="radio"/>
I picked this course because I wanted to study at the same institution I had studied at before	<input type="radio"/>	<input type="radio"/>	<input type="radio"/>
It is less expensive to undertake this course (e.g. it enables me to live at home)	<input type="radio"/>	<input type="radio"/>	<input type="radio"/>
I wished to relocate	<input type="radio"/>	<input type="radio"/>	<input type="radio"/>
I picked this course because I wanted to study at this institution	<input type="radio"/>	<input type="radio"/>	<input type="radio"/>
This course offers professional networking opportunities	<input type="radio"/>	<input type="radio"/>	<input type="radio"/>
I did not receive offers from the other course(s) to which I applied	<input type="radio"/>	<input type="radio"/>	<input type="radio"/>
Other (please specify) <input type="text"/>	<input type="radio"/>	<input type="radio"/>	<input type="radio"/>

Did you seek advice from any of the following sources when applying for or undertaking postgraduate study? Please select **yes** or **no** for each item.

	Yes	No
Personal contacts (e.g. family or friends)	<input type="radio"/>	<input type="radio"/>
Speaking to current students and/or alumni of current postgraduate institution/ course	<input type="radio"/>	<input type="radio"/>
Academic or support staff at my current postgraduate	<input type="radio"/>	<input type="radio"/>

institution		
University careers service	<input type="radio"/>	<input type="radio"/>
Academic or support staff at my undergraduate institution	<input type="radio"/>	<input type="radio"/>
UCAS	<input type="radio"/>	<input type="radio"/>
Open day at my current postgraduate institution	<input type="radio"/>	<input type="radio"/>
Professional Association	<input type="radio"/>	<input type="radio"/>
University rankings (e.g. Times Higher, the Guardian, QS)	<input type="radio"/>	<input type="radio"/>
My employer	<input type="radio"/>	<input type="radio"/>
Website of my current postgraduate institution	<input type="radio"/>	<input type="radio"/>
Bank or financial advisor	<input type="radio"/>	<input type="radio"/>
Unistats website	<input type="radio"/>	<input type="radio"/>
Other website or news source (please specify)	<input type="radio"/>	<input type="radio"/>
<input type="text"/>		
Other (please specify)	<input type="radio"/>	<input type="radio"/>
<input type="text"/>		
No advice consulted	<input type="radio"/>	<input type="radio"/>

Block 3bi: Previous postgraduates (most recent course)

The following questions are about your previous postgraduate course(s).

Please specify how many postgraduate courses you have previously undertaken. (For example, you may have completed both a Master's degree and a PGCE, or, a Master's degree and a PhD.)

Please answer the following questions about your previous postgraduate course.

If you have completed more than one postgraduate course, please answer these questions about your most recent postgraduate course. There will be an opportunity to provide details about the other postgraduate course(s) you have undertaken later in the survey.

Please specify the main subject of your previous postgraduate course.

If your postgraduate course subject is not listed here, please select 'other' and you will be prompted to enter this on the next page.

If 'other', please specify the subject of your previous postgraduate course.

At which institution did you study for this previous postgraduate course?

If you studied for your previous postgraduate course overseas, please select 'other', and you will be asked to provide details of this course on the next page.

If 'other', please specify the following for your postgraduate course:

Institution	<input type="text"/>
Country	<input type="text"/>

Which type of postgraduate course was this?

- ☐ Taught Master's degree (e.g. MA, MSc)
☐ Research Master's degree (e.g. MPhil, MRes)
☐ PhD/DPhil/ Professional Doctorate (e.g. EngD, EdD)
☐ PGCE leading to QTS
☐ PG Diploma
☐ PG Certificate
☐ Other (please specify)

During this postgraduate course, were you a full time or part time student?

- ☐ Full time student
- ☐ Part time student
- ☐ Sometimes full time and sometimes part time

During this postgraduate course, did you study on campus or by distance learning?

- ☐ On campus
- ☐ On campus with work placement
- ☐ By distance learning
- ☐ Sometimes on campus and sometimes by distance

During this postgraduate course, were you engaged in any of the following activities alongside your studies? Please select all that apply.

- ☐ Started/continued my own business
- ☐ Travelling
- ☐ Caring for dependants
- ☐ Period of unemployment
- ☐ Looking after the home
- ☐ Unpaid volunteering (not including internship)
- ☐ Additional study at postgraduate level
- ☐ Additional study not at postgraduate level
- ☐ Employment (full-time or part-time)
- ☐ Unpaid internship
- ☐ Other activity (please specify)
- ☐ Paid internship

Please indicate whether the following reasons were important in influencing your decision to undertake this postgraduate course.

If a reason was important, please indicate whether you think that this postgraduate course enabled it to be fulfilled.

	Important		If Important, was it fulfilled?		
	Yes	No	Fulfilled	Partially fulfilled	Unfulfilled
To pursue an intellectual interest	<input type="radio"/>	<input type="radio"/>	<input type="radio"/>	<input type="radio"/>	<input type="radio"/>
To expand my knowledge of a chosen subject	<input type="radio"/>	<input type="radio"/>	<input type="radio"/>	<input type="radio"/>	<input type="radio"/>
To gain practical experience	<input type="radio"/>	<input type="radio"/>	<input type="radio"/>	<input type="radio"/>	<input type="radio"/>
To develop particular skills	<input type="radio"/>	<input type="radio"/>	<input type="radio"/>	<input type="radio"/>	<input type="radio"/>
To progress my career	<input type="radio"/>	<input type="radio"/>	<input type="radio"/>	<input type="radio"/>	<input type="radio"/>
To enhance my earnings	<input type="radio"/>	<input type="radio"/>	<input type="radio"/>	<input type="radio"/>	<input type="radio"/>
To change my career	<input type="radio"/>	<input type="radio"/>	<input type="radio"/>	<input type="radio"/>	<input type="radio"/>
To enter a profession which requires or favours this qualification	<input type="radio"/>	<input type="radio"/>	<input type="radio"/>	<input type="radio"/>	<input type="radio"/>
To access professional networking opportunities	<input type="radio"/>	<input type="radio"/>	<input type="radio"/>	<input type="radio"/>	<input type="radio"/>
Because funding was available	<input type="radio"/>	<input type="radio"/>	<input type="radio"/>	<input type="radio"/>	<input type="radio"/>
To delay entry into the labour market	<input type="radio"/>	<input type="radio"/>	<input type="radio"/>	<input type="radio"/>	<input type="radio"/>
There were no suitable jobs when I graduated from my first degree	<input type="radio"/>	<input type="radio"/>	<input type="radio"/>	<input type="radio"/>	<input type="radio"/>
To enable progression to a higher degree (e.g. PhD)	<input type="radio"/>	<input type="radio"/>	<input type="radio"/>	<input type="radio"/>	<input type="radio"/>
To make a greater personal impact on society	<input type="radio"/>	<input type="radio"/>	<input type="radio"/>	<input type="radio"/>	<input type="radio"/>
To fulfil a lifestyle choice	<input type="radio"/>	<input type="radio"/>	<input type="radio"/>	<input type="radio"/>	<input type="radio"/>
Other (please specify)	<input type="radio"/>	<input type="radio"/>	<input type="radio"/>	<input type="radio"/>	<input type="radio"/>

How did you pay the postgraduate tuition fees for this course? Please select all that apply.

- ☐ Formal loan (e.g. from bank)
- ☐ Loan from family/ personal acquaintance
- ☐ Gift from family/ personal acquaintance
- ☐ Fee waiver (e.g. departmental scholarship)
- ☐ Sponsorship (e.g. employer, armed services)
- ☐ Research studentship (e.g. UK Research Council)
- ☐ Government grant
- ☐ Income from a job
- ☐ My own savings
- ☐ Other (please specify)

How did you cover your living costs during this postgraduate course? Please select all that apply.

- ☐ Formal loan (e.g. from bank)
- ☐ Loan from family/ personal acquaintance
- ☐ Research studentship (e.g. UK Research Council)
- ☐ Government grant

- ☐ Gift from family/ personal acquaintance
- ☐ Income from a job
- ☐ Scholarship or bursary (e.g. departmental scholarship)
- ☐ My own savings
- ☐ Sponsorship (e.g. employer, armed services)
- ☐ Other (please specify)

Did you apply for any other postgraduate courses in addition to this postgraduate course? (For example, you may have applied for a postgraduate course before, at the time of applying to, or since this postgraduate course).

- ☐ Yes
- ☐ No
- ☐ Don't know
- ☐ Prefer not to answer

Please list up to five postgraduate courses to which you have previously applied (do not include the postgraduate course that you previously undertook).

	Institution	Main Subject
Course 1	<input type="text"/>	<input type="text"/>
Course 2	<input type="text"/>	<input type="text"/>
Course 3	<input type="text"/>	<input type="text"/>
Course 4	<input type="text"/>	<input type="text"/>
Course 5	<input type="text"/>	<input type="text"/>

Why did you choose this postgraduate course over those others to which you applied?

Please select the three most important reasons from the list below.

- ☐ I favoured the content of my course
- ☐ Personal reasons (e.g. family, friends or care commitment to dependants informed my choice)
- ☐ My course offered professional networking opportunities
- ☐ Funding was available for my course
- ☐ I did not receive offers from the other course(s) to which I applied
- ☐ My course offered better employment prospects
- ☐ I wished to relocate
- ☐ It was less expensive to undertake my course (e.g. it enabled me to live at home)
- ☐ I favoured the institution at which I studied
- ☐ Other (please specify)
- ☐ My course had a good reputation

Did you seek advice from any of the following sources when applying for or undertaking this postgraduate course? Please select yes or no for each item.

	Yes	No
Professional Association	<input type="radio"/>	<input type="radio"/>
Unistats website	<input type="radio"/>	<input type="radio"/>
University careers service	<input type="radio"/>	<input type="radio"/>
University rankings (e.g. Times Higher, the Guardian, QS)	<input type="radio"/>	<input type="radio"/>
Open day at my current postgraduate institution	<input type="radio"/>	<input type="radio"/>
My employer	<input type="radio"/>	<input type="radio"/>
Bank or financial advisor	<input type="radio"/>	<input type="radio"/>
Academic or support staff at my undergraduate institution	<input type="radio"/>	<input type="radio"/>
Personal contacts (e.g. family or friends)	<input type="radio"/>	<input type="radio"/>
UCAS	<input type="radio"/>	<input type="radio"/>
Academic or support staff at my current postgraduate institution	<input type="radio"/>	<input type="radio"/>
Website of my current postgraduate institution	<input type="radio"/>	<input type="radio"/>
Speaking to current students and/or alumni of current postgraduate institution/ course	<input type="radio"/>	<input type="radio"/>
Other website or news source (please specify) <input type="text"/>	<input type="radio"/>	<input type="radio"/>
Other (please specify) <input type="text"/>	<input type="radio"/>	<input type="radio"/>
No advice consulted	<input type="radio"/>	<input type="radio"/>

Block 3bii: Previous postgraduates (second most recent PG course)

Please answer the following questions about your second most recent postgraduate course.

Please specify the main subject of this postgraduate course.

If your postgraduate course subject is not listed here, please select 'other' and you will be prompted to enter this on the next page.

If 'other', please specify the subject of your previous postgraduate course.

At which institution did you study for this postgraduate course?

If you studied for your previous postgraduate course overseas, please select 'other', and you will be asked to provide details of this course on the next page.

If 'other', please specify the following for your postgraduate course:

Institution	<input type="text"/>
Country	<input type="text"/>

Which type of postgraduate course was this?

- ☐ Taught Master's degree (e.g. MA, MSc)
☐ Research Master's degree (e.g. MPhil, MRes)
☐ PhD/DPhil/ Professional Doctorate (e.g. EngD, EdD)
☐ PGCE leading to QTS
☐ PG Diploma
☐ PG Certificate
☐ Other (please specify)

During this postgraduate course, were you a full time or part time student?

- ☐ Full time student
☐ Part time student
☐ Sometimes full time and sometimes part time

During this postgraduate course, did you study on campus or by distance learning?

- ☐ On campus
☐ On campus with work placement
☐ By distance learning
☐ Sometimes on campus and sometimes by distance

During this postgraduate course, were you engaged in any of the following activities alongside your studies? Please select **all** that apply.

- | | |
|---|---|
| <input type="checkbox"/> Unpaid internship | <input type="checkbox"/> Started/continued my own business |
| <input type="checkbox"/> Additional study at postgraduate level | <input type="checkbox"/> Travelling |
| <input type="checkbox"/> Looking after the home | <input type="checkbox"/> Period of unemployment |
| <input type="checkbox"/> Employment (full-time or part-time) | <input type="checkbox"/> Additional study not at postgraduate level |
| <input type="checkbox"/> Unpaid volunteering (not including internship) | <input type="checkbox"/> Other activity (please specify) <input type="text"/> |
| <input type="checkbox"/> Caring for dependants | <input type="checkbox"/> Paid internship |

Please indicate whether the following reasons were important in influencing your decision to undertake this postgraduate course.

If a reason was important, please indicate whether you think that your previous postgraduate course enabled it to be fulfilled.

Important	If Important, was it fulfilled?
<input type="text"/>	<input type="text"/>

	Yes	No	Fulfilled	Partially fulfilled	Unfulfilled
To pursue an intellectual interest	<input type="radio"/>	<input type="radio"/>	<input type="radio"/>	<input type="radio"/>	<input type="radio"/>
To expand my knowledge of a chosen subject	<input type="radio"/>	<input type="radio"/>	<input type="radio"/>	<input type="radio"/>	<input type="radio"/>
To gain practical experience	<input type="radio"/>	<input type="radio"/>	<input type="radio"/>	<input type="radio"/>	<input type="radio"/>
To develop particular skills	<input type="radio"/>	<input type="radio"/>	<input type="radio"/>	<input type="radio"/>	<input type="radio"/>
To progress my career	<input type="radio"/>	<input type="radio"/>	<input type="radio"/>	<input type="radio"/>	<input type="radio"/>
To enhance my earnings	<input type="radio"/>	<input type="radio"/>	<input type="radio"/>	<input type="radio"/>	<input type="radio"/>
To change my career	<input type="radio"/>	<input type="radio"/>	<input type="radio"/>	<input type="radio"/>	<input type="radio"/>
To enter a profession which requires or favours this qualification	<input type="radio"/>	<input type="radio"/>	<input type="radio"/>	<input type="radio"/>	<input type="radio"/>
To access professional networking opportunities	<input type="radio"/>	<input type="radio"/>	<input type="radio"/>	<input type="radio"/>	<input type="radio"/>
Because funding was available	<input type="radio"/>	<input type="radio"/>	<input type="radio"/>	<input type="radio"/>	<input type="radio"/>
To delay entry into the labour market	<input type="radio"/>	<input type="radio"/>	<input type="radio"/>	<input type="radio"/>	<input type="radio"/>
There were no suitable jobs when I graduated from my first degree	<input type="radio"/>	<input type="radio"/>	<input type="radio"/>	<input type="radio"/>	<input type="radio"/>
To enable progression to a higher degree (e.g. PhD)	<input type="radio"/>	<input type="radio"/>	<input type="radio"/>	<input type="radio"/>	<input type="radio"/>
To make a greater personal impact on society	<input type="radio"/>	<input type="radio"/>	<input type="radio"/>	<input type="radio"/>	<input type="radio"/>
To fulfil a lifestyle choice	<input type="radio"/>	<input type="radio"/>	<input type="radio"/>	<input type="radio"/>	<input type="radio"/>
Other (please specify)	<input type="radio"/>	<input type="radio"/>	<input type="radio"/>	<input type="radio"/>	<input type="radio"/>

How did you pay the postgraduate tuition fees for this course? Please select all that apply.

<input type="checkbox"/> Formal loan (e.g. from bank)	<input type="checkbox"/> Research studentship (e.g. UK Research Council)
<input type="checkbox"/> Loan from family/ personal acquaintance	<input type="checkbox"/> Government grant
<input type="checkbox"/> Gift from family/ personal acquaintance	<input type="checkbox"/> Income from a job
<input type="checkbox"/> Fee waiver (e.g. departmental scholarship)	<input type="checkbox"/> My own savings
<input type="checkbox"/> Sponsorship (e.g. employer, armed services)	<input type="checkbox"/> Other (please specify) <input type="text"/>

How did you cover your living costs during this postgraduate course? Please select all that apply.

<input type="checkbox"/> Formal loan (e.g. from bank)	<input type="checkbox"/> Research studentship (e.g. UK Research Council)
<input type="checkbox"/> Loan from family/ personal acquaintance	<input type="checkbox"/> Government grant
<input type="checkbox"/> Gift from family/ personal acquaintance	<input type="checkbox"/> Income from a job
<input type="checkbox"/> Scholarship or bursary (e.g. departmental scholarship)	<input type="checkbox"/> My own savings
<input type="checkbox"/> Sponsorship (e.g. employer, armed services)	<input type="checkbox"/> Other (please specify) <input type="text"/>

Did you apply for any other postgraduate courses in addition to this postgraduate course? (For example, you may have applied for a postgraduate course before, at the time of applying to, or since this postgraduate course).

☐ Yes

☐ No

☐ Don't know

☐ Prefer not to answer

Please list up to five postgraduate courses to which you have previously applied (do not include the postgraduate course that you previously undertook).

	Institution	Main Subject
Course 1	<input type="text"/>	<input type="text"/>
Course 2	<input type="text"/>	<input type="text"/>
Course 3	<input type="text"/>	<input type="text"/>
Course 4	<input type="text"/>	<input type="text"/>
Course 5	<input type="text"/>	<input type="text"/>

Why did you choose this postgraduate course over those others to which you applied?

Please select the three most important reasons from the list below.

- ☐ My course offered professional networking opportunities
 ☐ I wished to relocate
- ☐ Funding was available for my course
 ☐ My course offered better employment prospects
- ☐ It was less expensive to undertake my course (e.g. it enabled me to live at home)
 ☐ I favoured the content of my course
- ☐ I favoured the institution at which I studied
 ☐ I did not receive offers from the other course(s) to which I applied
- ☐ My course had a good reputation
 ☐ Other (please specify)
- ☐ Personal reasons (e.g. family, friends or care commitment to dependants informed my choice)

Did you seek advice from any of the following sources when applying for or undertaking this postgraduate course?
Please select yes or no for each item.

	Yes	No
University rankings (e.g. Times Higher, the Guardian, QS)	<input type="radio"/>	<input type="radio"/>
Professional Association	<input type="radio"/>	<input type="radio"/>
University careers service	<input type="radio"/>	<input type="radio"/>
Academic or support staff at my undergraduate institution	<input type="radio"/>	<input type="radio"/>
UCAS	<input type="radio"/>	<input type="radio"/>
Website of my current postgraduate institution	<input type="radio"/>	<input type="radio"/>
My employer	<input type="radio"/>	<input type="radio"/>
Bank or financial advisor	<input type="radio"/>	<input type="radio"/>
Academic or support staff at my current postgraduate institution	<input type="radio"/>	<input type="radio"/>
Open day at my current postgraduate institution	<input type="radio"/>	<input type="radio"/>
Speaking to current students and/or alumni of current postgraduate institution/ course	<input type="radio"/>	<input type="radio"/>
Unistats website	<input type="radio"/>	<input type="radio"/>
Personal contacts (e.g. family or friends)	<input type="radio"/>	<input type="radio"/>
Other website or news source (please specify) <input type="text"/>	<input type="radio"/>	<input type="radio"/>
Other (please specify) <input type="text"/>	<input type="radio"/>	<input type="radio"/>
No advice consulted	<input type="radio"/>	<input type="radio"/>

Block 3c: Non postgraduates

Have you ever applied for postgraduate study?

- ☐ Yes, I have an offer of a place for the next academic session
☐ Yes, I have previously been offered a place but was unable to take it up
☐ Yes, I have applied but I was not offered a place
☐ No, I have not applied
☐ Don't know
☐ Prefer not to answer

Block 3ci: Applied and PG offer for next season

Please specify the main subject of the postgraduate course for which you have an offer.

If your postgraduate course subject is not listed here, please select 'other' and you will be prompted to enter this on the next page.

If 'other', please specify the main subject(s) of the postgraduate course for which you have an offer.

At which institution is the postgraduate course for which you have an offer?

If this postgraduate course is overseas, please select 'other', and you will be asked to provide details of this course on the next page.

If 'other', please specify the following for the postgraduate course for which you have an offer:

Institution	<input type="text"/>
Country	<input type="text"/>

Which type of postgraduate course do you have an offer for?

- ☐ Taught Master's degree (e.g. MA, MSc)
☐ Research Master's degree (e.g. MPhil, MRes)
☐ PhD/DPhil/ Professional Doctorate (e.g. EngD, EdD)
☐ PGCE leading to QTS
☐ PG Diploma
☐ PG Certificate
☐ Other (please specify)

Did you apply for full time study or part time study?

- ☐ Full time study
☐ Part time study
☐ A combination of full time and part time study

Please indicate how important the following reasons were in influencing your decision to apply for postgraduate study.

	Very Important	Somewhat Important	Not Important
To pursue an intellectual interest	<input type="radio"/>	<input type="radio"/>	<input type="radio"/>
To expand my knowledge of a chosen subject	<input type="radio"/>	<input type="radio"/>	<input type="radio"/>
To gain practical experience	<input type="radio"/>	<input type="radio"/>	<input type="radio"/>
To develop particular skills	<input type="radio"/>	<input type="radio"/>	<input type="radio"/>
To progress my career	<input type="radio"/>	<input type="radio"/>	<input type="radio"/>
To enhance my earnings	<input type="radio"/>	<input type="radio"/>	<input type="radio"/>
To change my career	<input type="radio"/>	<input type="radio"/>	<input type="radio"/>
To enter a profession which requires or favours this qualification	<input type="radio"/>	<input type="radio"/>	<input type="radio"/>
To access professional networking opportunities	<input type="radio"/>	<input type="radio"/>	<input type="radio"/>
Because funding was available	<input type="radio"/>	<input type="radio"/>	<input type="radio"/>
To delay entry into the labour market (e.g. I did not want to work)	<input type="radio"/>	<input type="radio"/>	<input type="radio"/>
There were no suitable jobs when I graduated from my first degree	<input type="radio"/>	<input type="radio"/>	<input type="radio"/>
To enable progression to a higher degree (e.g. PhD)	<input type="radio"/>	<input type="radio"/>	<input type="radio"/>
To make a greater personal impact on society	<input type="radio"/>	<input type="radio"/>	<input type="radio"/>
To fulfil a lifestyle choice	<input type="radio"/>	<input type="radio"/>	<input type="radio"/>
Other (please specify) <input type="text"/>	<input type="radio"/>	<input type="radio"/>	<input type="radio"/>

Do you intend to take up your postgraduate course offer?

- ☐ Yes
☐ No
☐ Don't know
☐ Prefer not to say

Block 3ci.a Applied, PG offer, intend to accept

Will you study on campus or by distance learning?

- ☐ On campus
☐ By distance learning
☐ Sometimes on campus and sometimes by distance

Are you likely to engage in any of the following activities alongside your studies? Please select **all** that apply.

- | | |
|---|---|
| <input type="checkbox"/> Looking after the home | <input type="checkbox"/> Unpaid volunteering (not including internship) |
| <input type="checkbox"/> Travelling | <input type="checkbox"/> Caring for dependants |
| <input type="checkbox"/> Additional study at postgraduate level | <input type="checkbox"/> Started/continued my own business |
| <input type="checkbox"/> Period of unemployment | <input type="checkbox"/> Employment |
| <input type="checkbox"/> Unpaid internship | <input type="checkbox"/> Other activity (please specify) <input type="text"/> |
| <input type="checkbox"/> Additional study not at postgraduate level | <input type="checkbox"/> Paid internship |

How do you intend to pay for your postgraduate tuition fees? Please select all that apply.

- | | |
|--|--|
| <input type="checkbox"/> Formal loan (e.g. from bank) | <input type="checkbox"/> Research studentship (e.g. UK Research Council) |
| <input type="checkbox"/> Loan from family/ personal acquaintance | <input type="checkbox"/> Government grant |
| <input type="checkbox"/> Gift from family/ personal acquaintance | <input type="checkbox"/> Income from a job |
| <input type="checkbox"/> Fee waiver (e.g. departmental scholarship) | <input type="checkbox"/> My own savings |
| <input type="checkbox"/> Sponsorship (e.g. employer, armed services) | <input type="checkbox"/> Other (please specify) <input type="text"/> |

How do you intend to cover your living costs during your postgraduate studies? Please select all that apply.

- | | |
|---|--|
| <input type="checkbox"/> Formal loan (e.g. from bank) | <input type="checkbox"/> Research studentship (e.g. UK Research Council) |
| <input type="checkbox"/> Loan from family/ personal acquaintance | <input type="checkbox"/> Government grant |
| <input type="checkbox"/> Gift from family/ personal acquaintance | <input type="checkbox"/> Income from a job |
| <input type="checkbox"/> Scholarship or bursary (e.g. departmental scholarship) | <input type="checkbox"/> My own savings |
| <input type="checkbox"/> Sponsorship (e.g. employer, armed services) | <input type="checkbox"/> Other (please specify) <input type="text"/> |

Did you apply for any other postgraduate courses in addition to the one for which you have an offer? (For example, you may have applied for other postgraduate courses when you applied to the course for which you currently have an offer, or you may have submitted applications previously).

- ☐ Yes
☐ No
☐ Don't know
☐ Prefer not to answer

Please list up to five other postgraduate courses to which have you have applied.

	Institution	Main Subject
Course 1	<input type="text"/>	<input type="text"/>
Course 2	<input type="text"/>	<input type="text"/>
Course 3	<input type="text"/>	<input type="text"/>
Course 4	<input type="text"/>	<input type="text"/>
Course 5	<input type="text"/>	<input type="text"/>

Why do you intend to choose this postgraduate course over those others to which you applied?

Please select the three most important reasons from the list below.

- | | |
|--|--|
| <input type="checkbox"/> I wish to relocate | <input type="checkbox"/> It is less expensive to undertake my favoured course (e.g. it enables me to live at home) |
| <input type="checkbox"/> I did not receive offers from the other course(s) to which I applied | <input type="checkbox"/> My favoured course offers better employment prospects |
| <input type="checkbox"/> Funding is available for my favoured course | <input type="checkbox"/> I favour the institution at which I will study |
| <input type="checkbox"/> Personal reasons (e.g. family, friends or care commitment to dependants informed my choice) | <input type="checkbox"/> My favoured course has a good reputation |
| <input type="checkbox"/> I favour the content of my proposed course | <input type="checkbox"/> Other (please specify) <input type="text"/> |
| <input type="checkbox"/> My favoured course offers professional networking opportunities | |

Block 3ci.b Applied, PG offer, intend to decline

Which of the following statements best describe why you have decided to decline your postgraduate course offer? Please select all that apply.

- | | |
|---|---|
| <input type="checkbox"/> I didn't/ won't meet academic conditions | <input type="checkbox"/> The course is not suitable |
|---|---|

- ☐ I want to focus upon my career/ something else
 ☐ I don't know what postgraduate study will lead to
- ☐ I changed my mind
 ☐ I don't want to be an academic
- ☐ I found employment
 ☐ I don't think I'm suited to postgraduate study (e.g. because of ability or personality)
- ☐ Personal reasons (e.g. cannot move away from family)
 ☐ I did not want to leave my job
- ☐ It was not feasible (e.g. there are no suitable courses in my local area, flexible working is not possible in my job)
 ☐ I'm fed up with studying
- ☐ It is too expensive
 ☐ Other (please specify)
- ☐ There is no funding or other source of financial support available to me

Did you apply for any other postgraduate courses in addition to the one for which you received an offer? (For example, you may have applied for other postgraduate courses when you applied to the course for which you received an offer, or you may have submitted applications previously).

- ☐ Yes
☐ No
☐ Don't know
☐ Prefer not to answer

Please list up to five other postgraduate courses to which you have applied.

	Institution	Main Subject
Course 1	<input type="text"/>	<input type="text"/>
Course 2	<input type="text"/>	<input type="text"/>
Course 3	<input type="text"/>	<input type="text"/>
Course 4	<input type="text"/>	<input type="text"/>
Course 5	<input type="text"/>	<input type="text"/>

Block 3ci.c Applied, PG offer, undecided

Which of the following statements best describe why you are undecided about whether to accept your postgraduate course offer? Please select all that apply.

- ☐ I want to focus on my career/ something else
 ☐ I think postgraduate study is too expensive
- ☐ I don't know what postgraduate study will lead to
 ☐ I am unsure whether I'm suited to postgraduate study (e.g. because of ability or personality)
- ☐ Personal reasons (e.g. the compatibility of commitments to family, friends or care of dependants to undertaking postgraduate study)
 ☐ I am unsure whether it will be feasible (e.g. postgraduate study will clash with my current living arrangements, flexible working is difficult in my job)
- ☐ I am unsure of how I will fund my fees and living costs (e.g. I don't yet know whether I will receive funding or another source of financial support)
 ☐ I don't want to be an academic
- ☐ I am unsure whether the course is suitable
 ☐ Other (please specify)
- ☐ I am unsure whether I want to continue studying

If you accept your offer, do you intend to study on campus or by distance learning?

- ☐ On campus
☐ By distance learning
☐ Sometimes on campus and sometimes by distance

If you accept your offer, are you likely to engage in any of the following activities alongside your studies? Please select all that apply.

- ☐ Unpaid volunteering (not including internship)
 ☐ Additional study not at postgraduate level
- ☐ Unpaid internship
 ☐ Looking after the home
- ☐ Travelling
 ☐ Employment
- ☐ Caring for dependants
 ☐ Period of unemployment
- ☐ Started/continued my own business
 ☐ Other activity (please specify)
- ☐ Additional study at postgraduate level
 ☐ Paid internship

If you accept your offer, how do you intend to pay for your postgraduate tuition fees? Please select all that apply.

- | | |
|---|---|
| <input type="radio"/> Formal loan (e.g. from bank) | <input type="radio"/> Research studentship (e.g. UK Research Council) |
| <input type="radio"/> Loan from family/ personal acquaintance | <input type="radio"/> Government grant |
| <input type="radio"/> Gift from family/ personal acquaintance | <input type="radio"/> Income from a job |
| <input type="radio"/> Fee waiver (e.g. departmental scholarship) | <input type="radio"/> My own savings |
| <input type="radio"/> Sponsorship (e.g. employer, armed services) | <input type="radio"/> Other (please specify) <input type="text"/> |

If you accept your offer, how do you intend to cover your living costs during your postgraduate studies? Please select all that apply.

- | | |
|--|---|
| <input type="radio"/> Formal loan (e.g. from bank) | <input type="radio"/> Research studentship (e.g. UK Research Council) |
| <input type="radio"/> Loan from family/ personal acquaintance | <input type="radio"/> Government grant |
| <input type="radio"/> Gift from family/ personal acquaintance | <input type="radio"/> Income from a job |
| <input type="radio"/> Scholarship or bursary (e.g. departmental scholarship) | <input type="radio"/> My own savings |
| <input type="radio"/> Sponsorship (e.g. employer, armed services) | <input type="radio"/> Other (please specify) <input type="text"/> |

Did you apply for any other postgraduate courses in addition to the one for which you have an offer? (For example, you may have applied for other postgraduate courses when you applied to the course for which you currently have an offer, or you may have submitted applications previously).

- ☐ Yes
- ☐ No
- ☐ Don't know
- ☐ Prefer not to answer

Please list up to five other postgraduate courses to which have you have applied.

	Institution	Main Subject
Course 1	<input type="text"/>	<input type="text"/>
Course 2	<input type="text"/>	<input type="text"/>
Course 3	<input type="text"/>	<input type="text"/>
Course 4	<input type="text"/>	<input type="text"/>
Course 5	<input type="text"/>	<input type="text"/>

Block 3cii: previously held PG offer, unable to take up

Please answer the following questions about the postgraduate offer you previously received but did not take up.

Please specify the main subject of the postgraduate course for which you previously received an offer.

If your postgraduate course subject is not listed here, please select 'other' and you will be prompted to enter this on the next page.

If 'other', please specify the main subject(s) of the postgraduate course to which you applied.

From which institution did you receive an offer for postgraduate study?

If the institution from which you received an offer is overseas, please select 'other', and you will be asked to provide details on the next page.

If 'other', please specify the following for the postgraduate course for which you received an offer.

Institution	<input type="text"/>
Country	<input type="text"/>

Which type of postgraduate course did you receive an offer for?

☐ Taught Master's degree (e.g. MA, MSc)

☐ Research Master's degree (e.g. MPhil, MRes)

☐ PhD/DPhil/ Professional Doctorate (e.g. EngD, EdD)

☐ PGCE leading to QTS

☐ PG Diploma

☐ PG Certificate

☐ Other (please specify)

In which year did you receive an offer?

Did you apply for full time or part time study?

☐ Full time study

☐ Part time study

☐ A combination of full time and part time study

Please indicate how important the following reasons were in influencing your decision to apply for postgraduate study.

	Very Important	Somewhat Important	Not Important
To pursue an intellectual interest	<input type="radio"/>	<input type="radio"/>	<input type="radio"/>
To expand my knowledge of a chosen subject	<input type="radio"/>	<input type="radio"/>	<input type="radio"/>
To gain practical experience	<input type="radio"/>	<input type="radio"/>	<input type="radio"/>
To develop particular skills	<input type="radio"/>	<input type="radio"/>	<input type="radio"/>
To progress my career	<input type="radio"/>	<input type="radio"/>	<input type="radio"/>
To enhance my earnings	<input type="radio"/>	<input type="radio"/>	<input type="radio"/>
To change my career	<input type="radio"/>	<input type="radio"/>	<input type="radio"/>
To enter a profession which requires or favours this qualification	<input type="radio"/>	<input type="radio"/>	<input type="radio"/>
To access professional networking opportunities	<input type="radio"/>	<input type="radio"/>	<input type="radio"/>
Because funding was available	<input type="radio"/>	<input type="radio"/>	<input type="radio"/>
To delay entry into the labour market	<input type="radio"/>	<input type="radio"/>	<input type="radio"/>
There were no suitable jobs when I graduated from my first degree	<input type="radio"/>	<input type="radio"/>	<input type="radio"/>
To enable progression to a higher degree (e.g. PhD)	<input type="radio"/>	<input type="radio"/>	<input type="radio"/>
To make a greater personal impact on society	<input type="radio"/>	<input type="radio"/>	<input type="radio"/>
To fulfil a lifestyle choice	<input type="radio"/>	<input type="radio"/>	<input type="radio"/>
Other (please specify)	<input type="radio"/>	<input type="radio"/>	<input type="radio"/>

Which of the following statements best describe why you did not take up your postgraduate course offer? Please select all that apply.

☐ Personal reasons (e.g. cannot move away from family, friends or dependants)

☐ I was fed up with studying

☐ It was too expensive

☐ The course was not suitable

☐ I didn't think I was suited to postgraduate study (e.g. because of ability or personality)

☐ I didn't want to be an academic

☐ I didn't meet academic conditions

☐ No funding or other source of financial support was available to me

☐ I found employment

☐ I did not want to leave my job

☐ I wanted to focus on my job/ something else

☐ I was unsure whether it would be feasible (e.g. postgraduate study clashed with my living arrangements, flexible working was difficult or not possible in my job)

☐ I didn't know what postgraduate study would lead to

☐ Other (please specify)

☐ I changed my mind

Have you applied for any other postgraduate courses in addition to the one for which you received an offer? (For example, you may have applied for other postgraduate courses when you applied to the course for which you

received an offer, or you may have submitted applications previously or since).

- ☐ Yes
- ☐ No
- ☐ Don't know
- ☐ Prefer not to answer

Please list up to five other postgraduate courses to which have you have applied.

	Institution	Main Subject
Course 1	<input type="text"/>	<input type="text"/>
Course 2	<input type="text"/>	<input type="text"/>
Course 3	<input type="text"/>	<input type="text"/>
Course 4	<input type="text"/>	<input type="text"/>
Course 5	<input type="text"/>	<input type="text"/>

Block 3ciii: previously applied, no PG offer received

Please answer the following questions about the postgraduate course to which you applied.

Please specify the main subject of the postgraduate course to which you applied.

If your postgraduate course subject is not listed here, please select 'other' and you will be prompted to enter this on the next page.

If 'other', please specify the main subject(s) of the postgraduate course to which you applied.

To which institution did you apply for your postgraduate course?

If the institution to which you applied for a postgraduate course is overseas, please select 'other', and you will be asked to provide details on the next page.

If 'other', please specify the following for the postgraduate course to which you applied.

Institution	<input type="text"/>
Country	<input type="text"/>

Which type of postgraduate course did you apply for?

- ☐ Taught Master's degree (e.g. MA, MSc)
- ☐ Research Master's degree (e.g. MPhil, MRes)
- ☐ PhD/DPhil/ Professional Doctorate (e.g. EngD, EdD)
- ☐ PGCE leading to QTS
- ☐ PG Diploma
- ☐ PG Certificate
- ☐ Other (please specify)

Did you apply for full-time study or part-time study?

- ☐ Full time study
- ☐ Part time study
- ☐ A combination of full-time and part-time study

Why did you decide to apply for postgraduate study?

Please select the three most important reasons from the list below.

- ☐ To delay entry into the labour market
- ☐ Because there was funding available
- ☐ To expand my knowledge of a chosen subject
- ☐ To progress my career
- ☐ To access professional networking opportunities
- ☐ To pursue an intellectual interest
- ☐ To enter a profession which requires or favours this qualification
- ☐ To fulfil a lifestyle choice
- ☐ To enable progression to a higher degree (e.g. PhD)
- ☐ To develop particular skills
- ☐ To change my career
- ☐ To make a greater personal impact on society
- ☐ To gain practical experience
- ☐ To enhance my earnings
- ☐ There were no suitable jobs when I graduated from my first degree
- ☐ Other (please specify)

Had you received an offer, did you intend to take up your postgraduate course?

- ☐ Yes
- ☐ No
- ☐ Don't know
- ☐ Prefer not to say

Did you plan to study on campus or by distance learning?

- ☐ On campus
- ☐ By distance learning
- ☐ Sometimes on campus and sometimes by distance

Would you have likely engaged in any of the following activities alongside your postgraduate studies? Please select all that apply.

- ☐ Period of unemployment
- ☐ Looking after the home
- ☐ Travelling
- ☐ Unpaid internship
- ☐ Started/continued my own business
- ☐ Additional study at postgraduate level
- ☐ Additional study not at postgraduate level
- ☐ Employment
- ☐ Unpaid volunteering (not including internship)
- ☐ Caring for dependants
- ☐ Other activity (please specify)
- ☐ Paid internship

How did you intend to pay for your postgraduate tuition fees? Please select all that apply.

- ☐ Formal loan (e.g. from bank)
- ☐ Loan from family/ personal acquaintance
- ☐ Gift from family/ personal acquaintance
- ☐ Fee waiver (e.g. departmental scholarship)
- ☐ Sponsorship (e.g. employer, armed services)
- ☐ Research studentship (e.g. UK Research Council)
- ☐ Government grant
- ☐ Income from a job
- ☐ My own savings
- ☐ Other (please specify)

How did you intend to cover your living costs during your postgraduate studies? Please select all that apply.

- ☐ Formal loan (e.g. from bank)
- ☐ Loan from family/ personal acquaintance
- ☐ Gift from family/ personal acquaintance
- ☐ Scholarship or bursary (e.g. departmental scholarship)
- ☐ Sponsorship (e.g. employer, armed services)
- ☐ Research studentship (e.g. UK Research Council)
- ☐ Government grant
- ☐ Income from a job
- ☐ My own savings
- ☐ Other (please specify)

Block 3civ. Advice Q (for all who have applied to but not yet done PG study)

Did you seek advice from any of the following sources when applying for postgraduate study? Please select yes or no for each item.

	Yes	No
Academic or support staff at my current postgraduate institution	<input type="radio"/>	<input type="radio"/>
Personal contacts (e.g. family or friends)	<input type="radio"/>	<input type="radio"/>
Professional Association	<input type="radio"/>	<input type="radio"/>
UCAS	<input type="radio"/>	<input type="radio"/>

Academic or support staff at my undergraduate institution	<input type="radio"/>	<input type="radio"/>
University careers service	<input type="radio"/>	<input type="radio"/>
Website of my current postgraduate institution	<input type="radio"/>	<input type="radio"/>
Bank or financial advisor	<input type="radio"/>	<input type="radio"/>
My employer	<input type="radio"/>	<input type="radio"/>
Open day at my current postgraduate institution	<input type="radio"/>	<input type="radio"/>
University rankings (e.g. Times Higher, the Guardian, QS)	<input type="radio"/>	<input type="radio"/>
Speaking to current students and/or alumni of current postgraduate institution/ course	<input type="radio"/>	<input type="radio"/>
Unistats website	<input type="radio"/>	<input type="radio"/>
Other website or news source (please specify) <input type="text"/>	<input type="radio"/>	<input type="radio"/>
Other (please specify) <input type="text"/>	<input type="radio"/>	<input type="radio"/>
No advice consulted	<input type="radio"/>	<input type="radio"/>

Block 3d: Post-graduation employment

The following questions are about your **current** and **previous** employment (including employment, self-employment, paid internships, unpaid internships, and unpaid volunteering), **since completing** your undergraduate degree.

How **many** positions (including employment, self-employment, paid internships, unpaid internships, and unpaid volunteering), have you had **since completing** your undergraduate degree?

Block 3di: Position 1

The following questions are about your **most recent** position.

Was or is this position:

- | | |
|---|---|
| <input type="radio"/> Paid employment | <input type="radio"/> Unpaid volunteering |
| <input type="radio"/> Paid internship | <input type="radio"/> Self-employed |
| <input type="radio"/> Unpaid internship | <input type="radio"/> Other (please specify) <input type="text"/> |

What is/ was your job title?

Was or is this position full time or part time?

- | | |
|---------------------------------|---------------------------------|
| <input type="radio"/> Full-time | <input type="radio"/> Part-time |
|---------------------------------|---------------------------------|

In which of the following sectors was or is this position based?

In which 'other' sector was or is this position based?

Please specify the **gross annual pay** you received for this position i.e. per annum salary before income tax, National Insurance and other deductions, and including any overtime, bonuses, commission, tips. If you have worked part-time or in short-term jobs, please estimate your pro-rata salary for the past year.

Annual earnings before tax:

Which of the following qualifications were required for this position? Please select all that apply.

- | | |
|--|---|
| <input type="checkbox"/> A levels or Scottish Highers | <input type="checkbox"/> Other professional/vocational training |
| <input type="checkbox"/> An undergraduate degree in a particular subject | <input type="checkbox"/> Employment experience/training in this organisation in another job |
| <input type="checkbox"/> An undergraduate degree in any subject | <input type="checkbox"/> Employment experience/training in another organisation |
| <input type="checkbox"/> A postgraduate qualification | <input type="checkbox"/> No qualification |

☐ Other academic qualification

Would you consider this position to be a graduate-level appointment, i.e. a 'graduate job'?

Yes

☐

No

☐

Don't know

☐

Block 3dii: Position 2

The following questions are about your second most recent position.

Was or is this position:

☐ Paid employment

☐ Unpaid volunteering

☐ Paid internship

☐ Self-employed

☐ Unpaid internship

☐ Other (please specify)

What is/ was your job title?

Was or is this position full time or part time?

☐ Full-time

☐ Part-time

In which of the following sectors was or is this position based?

In which 'other' sector was or is this position based?

Please specify the gross annual pay you received for this position i.e. per annum salary before income tax, National Insurance and other deductions, and including any overtime, bonuses, commission, tips. If you have worked part-time or in short-term jobs, please estimate your pro-rata salary for the past year.

Annual earnings before tax:

Which of the following qualifications were required for this position? Please select all that apply.

☐ A levels or Scottish Highers

☐ Other professional/vocational training

☐ An undergraduate degree in a particular subject

☐ Employment experience/training in this organisation in another job

☐ An undergraduate degree in any subject

☐ Employment experience/training in another organisation

☐ A postgraduate qualification

☐ No qualification

☐ Other academic qualification

Would you consider this position to be a graduate-level appointment, i.e. a 'graduate job'?

Yes

☐

No

☐

Don't know

☐

Block 3diii: Position 3

The following questions are about your third most recent position.

Was or is this position:

☐ Paid employment

☐ Unpaid volunteering

☐ Paid internship

☐ Self-employed

☐ Unpaid internship

☐ Other (please specify)

What is/ was your job title?

Was or is this position full time or part time?

☐ Full-time

☐ Part-time

In which of the following sectors was or is this position based?

In which 'other' sector was or is this position based?

Please specify the **gross annual pay** you received for this position i.e. per annum salary before income tax, National Insurance and other deductions, and including any overtime, bonuses, commission, tips. If you have worked part-time or in short-term jobs, please estimate your pro-rata salary for the past year.

Annual earnings before tax:

Which of the following qualifications were required for this position? Please select **all** that apply.

☐ A levels or Scottish Highers

☐ Other professional/vocational training

☐ An undergraduate degree in a particular subject

☐ Employment experience/training in this organisation in another job

☐ An undergraduate degree in any subject

☐ Employment experience/training in another organisation

☐ A postgraduate qualification

☐ No qualification

☐ Other academic qualification

Would you consider this position to be a graduate-level appointment, i.e. a 'graduate job'?

Yes

☐

No

☐

Don't know

☐

Block 4: Future plans

Section 3. Future plans

In this section of the survey, we ask a few questions about your plans for the future.

What are your plans and aspirations for the future? You may comment on professional and personal ambitions.

Would you consider applying for a postgraduate course in the future?

☐ Yes

☐ No

☐ Don't know

☐ Prefer not to answer

What are the reasons you might undertake postgraduate study in the future?

Please select the **three** most important reasons from the list below.

☐ If funding is available

☐ To fulfil a lifestyle choice

☐ To enable progression to a higher degree (e.g. PhD)

☐ To pursue an intellectual interest

☐ To change my career

☐ To expand my knowledge of a chosen subject

☐ To access professional networking opportunities

☐ If there were no suitable jobs

☐ To progress my career

☐ To develop particular skills

☐ To gain practical experience

☐ To make a greater personal impact on society

☐ To delay or avoid entry into the labour market

☐ To enter a profession which requires or favours this qualification

☐ To enhance my earnings

☐ Other (please specify)

Which of the following statements best describe why you think that you will not undertake postgraduate study in the future? Please select all that apply.

☐ I don't think I'm suited to postgraduate study (e.g. because of ability or personality)

☐ I want to focus upon something else

☐ I'm fed up with studying

☐ I am in employment

☐ There is no funding or other source of financial support available to me

☐ I do not want to leave my job

☐ It is too expensive

☐ Personal reasons (e.g. relating to friends, family or care of dependants)

☐ I don't know what it will lead to

☐ I didn't/ won't meet academic conditions

☐ I don't want to be an academic

☐ Other (please specify)

☐ There are no feasible options (e.g. there are no courses in my local area, flexible working is not possible in my job)

Block 5: Personal characteristics

Section 4. Personal Characteristics

In this final section of the survey, we ask about your personal characteristics. This information will help us to understand whether demographic and personal characteristics appear to be related to undergraduate study choices and activities undertaken since graduation. Please answer as many questions as you can.

Are you:

☐ Male

☐ Female

☐ Prefer not to say

What is your age?

Which of the following statements best describes your current martial or relationship status?

☐ Single (never married)

☐ Married/ Civil partnership and separated from partner

☐ In a relationship

☐ Divorced

☐ In a relationship and living with partner

☐ Widowed

☐ Married/ Civil partnership and living with partner

☐ Prefer not to answer

What is your ethnic group?

☐ White British

☐ Asian or Asian British - Bangladeshi

☐ Irish Traveller

☐ Chinese

☐ Gypsy or Traveller

☐ Other Asian background

☐ Other White background

☐ Mixed - White and Black Caribbean

☐ Black - African

☐ Mixed - White and Black African

☐ Black - Caribbean

☐ Mixed - White and Asian

☐ Black British

☐ Other Mixed background

☐ Other Black background

☐ Other Ethnic background

☐ Asian or Asian British - Indian

☐ Not known

☐ Asian or Asian British - Pakistani

☐ Prefer not to answer

The next two questions are about the occupations and qualifications of your parents. This includes natural parents, adoptive parents, step-parents, carers or guardians, who were most involved in your upbringing.

Thinking back to when you were 14 years old, what occupations did your parents have?

	Employment status	Job title (if applicable)
Parent 1	<input type="text"/>	<input type="text"/>
Parent 2	<input type="text"/>	<input type="text"/>
Parent 3	<input type="text"/>	<input type="text"/>

Parent 4

Which of the following education qualifications did/ do your parents have? Please select all that apply.

	Parent 1	Parent 2	Parent 3	Parent 4
Undergraduate degree (e.g. BA, BSc)	<input type="checkbox"/>	<input type="checkbox"/>	<input type="checkbox"/>	<input type="checkbox"/>
Higher national certificate or diploma (e.g. BTEC HNC/ HND)	<input type="checkbox"/>	<input type="checkbox"/>	<input type="checkbox"/>	<input type="checkbox"/>
Professional qualifications (e.g. Chartered Builder, Engineer, Accountant, Secretary)	<input type="checkbox"/>	<input type="checkbox"/>	<input type="checkbox"/>	<input type="checkbox"/>
Postgraduate degree (e.g. MA, MSc)	<input type="checkbox"/>	<input type="checkbox"/>	<input type="checkbox"/>	<input type="checkbox"/>
Postgraduate diploma or certificate (e.g. PGCE)	<input type="checkbox"/>	<input type="checkbox"/>	<input type="checkbox"/>	<input type="checkbox"/>
Higher degree (e.g. MPhil, MRes, PhD)	<input type="checkbox"/>	<input type="checkbox"/>	<input type="checkbox"/>	<input type="checkbox"/>
None of the above	<input type="checkbox"/>	<input type="checkbox"/>	<input type="checkbox"/>	<input type="checkbox"/>
Don't know	<input type="checkbox"/>	<input type="checkbox"/>	<input type="checkbox"/>	<input type="checkbox"/>
Prefer not to answer	<input type="checkbox"/>	<input type="checkbox"/>	<input type="checkbox"/>	<input type="checkbox"/>
Other (please specify)	<input type="checkbox"/>	<input type="checkbox"/>	<input type="checkbox"/>	<input type="checkbox"/>
<input type="text"/>				

Please provide the full postcode for your home address when you applied for your undergraduate degree.

Please confirm the region of your home address when you applied for your undergraduate degree.

Which of the following statements, if any, apply to you? Please select all that apply to you.

- ☐ I have a child/children aged under 16 living with me some or all of the time who I care for
- ☐ I have a child/children aged 16 or over living with me some or all of the time who I care for
- ☐ I have adult dependant(s) living with me some or all of the time who I care for
- ☐ I have adult dependant(s) who do not live with me who I care for
- ☐ None of these
- ☐ Prefer not to answer

How many people in total do you currently care for?

1	2	3	4	5	6	7	8	9+	Prefer not to answer
<input type="radio"/>	<input type="radio"/>	<input type="radio"/>	<input type="radio"/>	<input type="radio"/>	<input type="radio"/>	<input type="radio"/>	<input type="radio"/>	<input type="radio"/>	<input type="radio"/>

Do you have any long term illness, health problem or disability?

- ☐ Yes
- ☐ No
- ☐ Prefer not to answer

Please indicate what this/these condition(s) is/are. Please select all that apply.

- ☐ A specific learning difficulty such as dyslexia, dyspraxia or ADHD ☐ Mental health difficulties
- ☐ Blind/partially sighted ☐ Autistic spectrum disorders
- ☐ Deaf/hearing impairment ☐ An unseen illness or disability (e.g. diabetes, epilepsy, asthma)
- ☐ Wheelchair user/mobility difficulties ☐ Other long-term illness or disability (please specify)
- ☐ Personal care support ☐ Prefer not to answer
-

Have you ever been in local authority care or supported by the Foyer Federation?

- ☐ Yes
- ☐ No
- ☐ Prefer not to answer

Please indicate the total amount of time you have spent in local authority care or Foyer Federation accommodation.

- ☐ Less than 1 year
- ☐ 1 year to less than 3 years
- ☐ 3 years to less than 5 years
- ☐ 5 years to less than 10 years
- ☐ 10 or more years
- ☐ Prefer not to answer

Block 6. Prize draw option question

Thank you for being part of the Pathways Beyond Graduation Survey.

Do you wish to be considered to win a £5 Amazon voucher (first 150 respondents) or a £500 Amazon voucher (prize draw)?

If you select yes, you will be asked to provide your email address. Email addresses will be stored separately to survey responses and used solely for the purposes of the prize draw. They will not be passed to any third party without your permission and will be deleted once prizes have been allocated.

- ☐ Yes, I wish to enter the prize draw
- ☐ No, I do not wish to enter the prize draw

Appendix C. Pathways to Postgraduate Study survey (2014/15 version for scholarship holders)

Qualtrics Survey Software

12/03/2015 18:57



Introduction

Welcome to the Pathways to Postgraduate Study Survey

This survey is intended for UK students currently enrolled in a taught postgraduate course at the University of York.

All respondents who qualify and complete the survey can enter into a prize draw to win one £500 or one of two £200 Amazon vouchers.

This survey has been commissioned as part of a government-funded project to enable UK universities, policy-makers and funding bodies to better understand who progresses to taught postgraduate study, and why. The UK government has acknowledged that access to postgraduate study is an increasingly important aspect of the widening participation agenda and social mobility more generally. Your answers in this survey will generate a better understanding of this complex issue.

Completing the survey

This survey will ask about your current taught postgraduate course, as well as: your prior academic background; activities undertaken since completing your undergraduate degree; and, your future plans. In order to make these data meaningful, there is a short 'personal characteristics' section at the end of the survey.

On average, the survey takes 20 minutes to complete, depending on how many questions are relevant to you. There are five sections to the survey:

1. Academic background
2. Your current taught postgraduate course
3. Activities since graduation
4. Future plans
5. Personal characteristics

Please answer as many questions as you can. Except for those which direct you through the survey, none of the questions are compulsory. Where answers are provided, please select the option that is the best fit to your situation, or enter your response into the 'other' box, where appropriate. The survey will not allow you to move backwards; however, there is an option to save your responses and complete the survey at a future time. The option to 'save and continue' works by placing a cookie* on your browser which keeps track of your survey progress.

All responses must be submitted by midnight of 11 November 2014.

The information you provide will be treated in confidence and stored securely according to EU data protection regulation. The survey has received full approval from the ethics committee of the Department of Education, University of York, which is leading the survey. No outputs arising from the project will cite findings in a way that enables you, your university or employers to be identified. Data will be stored and analysed by the research team, which comprises researchers in the Department of Education, University of York and at CFE Research.** Except in aggregate form, data will not be passed to any other individuals or organisations, including participating universities. By beginning the survey, you acknowledge that you have read this information and agree to participate in this research.

If you have any questions about the survey or the project, please contact sally.hancock@york.ac.uk (research officer) or emma.marsden@york.ac.uk (Chair, University of York Education Ethics Committee).

*A cookie is a small text file which helps your web browser navigate through a particular website. The cookie can then be read back later by the web browser as required. The use of cookies is a convenient way of allowing a computer to remember specific information relating to a website which has been visited. For further information about cookies including a detailed definition, please consult [All About Cookies](#)

** CFE Research is an independent not-for-profit company based in Leicester which specialises in research services in education (www.cfe.org.uk). CFE have been contracted by the consortium universities to work on aspects of the research.

Qualifying questions

At the University of York, are you a:

UK student (i.e. 'home student')

☐

EU student

☐

International student

☐

Thank you for your interest in the Pathways to Postgraduate Study Survey. We do not require any further information from you at this stage.

At the University of York, which type of postgraduate course are you undertaking?

☐ Taught Master's degree (e.g. MA, MSc)

☐ PGCE leading to QTS

☐ Postgraduate Diploma

☐ Other postgraduate course

☐ Postgraduate Certificate

Thank you for your interest in the Pathways to Postgraduate Study Survey. We do not require any further information from you at this stage.

Section 1. Academic background**Section 1. Academic background**

In this first section of the survey, we will ask about your academic background up until the point that you completed your undergraduate degree.

Thinking back to when you were 14, which type of school did you attend?

- ☐ Private/independent school
 ☐ Don't know
☐ State secondary special school (e.g. for children with disabilities or special needs)
 ☐ Prefer not to answer
☐ State secondary school
 ☐ Other (please specify)
☐ Selective state secondary school (e.g. grammar school)

What was your highest qualification when you entered undergraduate study? (In some cases, more than one may apply, e.g. you may have an A Level and a BTEC. Please select all that apply.)

If you did not undertake undergraduate study, please select any qualifications that you do have, and select 'I did not undertake undergraduate study' also.

- ☐ GCE A-levels or Scottish (SQC) Higher or Advanced Higher levels
 ☐ Open University (OU) credits
☐ International Baccalaureate (IB) diploma or certificate
 ☐ Mature student admitted on basis of previous experience (without formal APEL/APL) and/or institution's own entrance examinations
☐ BTEC or SVQ
 ☐ Modern Apprenticeship (Including Advanced Modern Apprenticeship)
☐ GNVQ
 ☐ No formal qualification
☐ GCSE/'O' level qualifications only; SCE 'O' grades and Standard grades
 ☐ I did not undertake undergraduate study
☐ Access Course (QAA recognised)
 ☐ Don't know
☐ Access Course (not QAA recognised)
 ☐ Prefer not to answer
☐ Foundation course at Further Education (FE) level
 ☐ Other (please specify)

Prior to your undergraduate study, did you participate in a programme aimed at widening participation to higher education? Examples of these programmes include the AimHigher programme, Sutton Trust summer schools or an event organised by a university, e.g. as part of an Access programme. Please select all that apply.

- ☐ Sutton Trust summer school
 ☐ Event organised by university
☐ University supported Access programme
 ☐ Residential course organised by university
☐ Event organised by school
 ☐ Don't know
☐ AimHigher programme
 ☐ Prefer not to answer
☐ Did not attend a widening participation programme(s)
 ☐ Other (please specify)

Please specify which type of undergraduate degree you completed.

- ☐ Bachelor's degree (e.g. BA, BSc, BEd, LLB)
☐ Integrated/ undergraduate Master's degree (e.g. MBIol, MChem, MEng, MMath, MPhys, M Psych, MSci)
☐ Other (please specify)

Please specify which type of honours degree you completed.

- ☐ Single Honours (i.e. one subject)
☐ Joint or Dual Honours (i.e. two subjects)
☐ Combined honours (e.g. two or more subjects)
☐ Don't know
☐ Other (please specify)

Please specify the subject of your undergraduate degree.

If your degree subject is not listed here, please select 'other' and you will be prompted to enter this on the next page.

If 'other', please specify the subject of your undergraduate degree.

Please specify the two main subjects of your undergraduate degree.

If one or both of your degree subjects are not listed here, please select 'other' and you will be prompted to enter this on the next page.

Subject 1

Subject 2

If 'other', please specify the subject(s) of your undergraduate degree.

At which institution did you study for your undergraduate degree?

If your undergraduate institution is not listed here, please select 'other' and you will be prompted to enter this on the next page.

If 'other', please specify the following for the institution of your undergraduate degree.

Institution

Country

In which year did you begin your undergraduate degree course?

If 'other', please specify the year in which you began your undergraduate degree course:

As an undergraduate, were you a full time or part time student?

- ☐ Full time student
- ☐ Part time student
- ☐ Sometimes full time and sometimes part time

Did you study on campus or by distance learning?

- ☐ On campus
- ☐ On campus with one year placement
- ☐ By distance learning
- ☐ Sometimes on campus and sometimes by distance

Which class of undergraduate degree were you awarded?

- ☐ First Class Honours
- ☐ Upper Second Class Honours
- ☐ Lower Second Class Honours
- ☐ Unclassified Second Class Honours
- ☐ Third Class Honours
- ☐ Ordinary Degree (unclassified)
- ☐ Did not complete
- ☐ Other (please specify)

How did you pay for your undergraduate tuition fees? Please select all that apply.

- | | |
|--|--|
| <input type="checkbox"/> Formal loan (e.g. from Student Loans Company, bank) | <input type="checkbox"/> Government grant |
| <input type="checkbox"/> Loan from family/ personal acquaintance | <input type="checkbox"/> Income from a job |
| <input type="checkbox"/> Gift from family/ personal acquaintance | <input type="checkbox"/> My own savings |

- ☐ Fee waiver (e.g. scholarship) ☐ No tuition fees at time of undergraduate study
- ☐ Sponsorship (e.g. employer, armed services) ☐ Other (please specify)

How did you pay for your living costs during your undergraduate studies? Please select all that apply.

- ☐ Formal loan (e.g. from Student Loans Company, bank) ☐ Government grant
- ☐ Loan from family/ personal acquaintance ☐ Income from a job
- ☐ Gift from family/ personal acquaintance ☐ My own savings
- ☐ Scholarship or bursary ☐ Other (please specify)
- ☐ Sponsorship (e.g. employer, armed services)

How much total student debt did you have when you completed your undergraduate degree that you needed to repay?

Please include only student debt from your undergraduate studies. Do not include mortgages or existing debt prior to your undergraduate study, or debt accrued from post-graduate activities, e.g. postgraduate study.

- ☐ None
- ☐ Up to £4,999
- ☐ £5,000-£9,999
- ☐ £10,000-£14,999
- ☐ £15,000-£19,999
- ☐ £20,000-£24,999
- ☐ £25,000-£29,999
- ☐ Over £30,000
- ☐ Don't know
- ☐ Prefer not to say

How much total student debt do you have left to repay now?

- ☐ None
- ☐ Up to £4,999
- ☐ £5,000-£9,999
- ☐ £10,000-£14,999
- ☐ £15,000-£19,999
- ☐ £20,000-£24,999
- ☐ £25,000-£29,999
- ☐ Over £30,000
- ☐ Don't know
- ☐ Prefer not to say

Section 2. Your current postgraduate course**Section 2. Your current postgraduate course**

In this section of the survey, we ask about your current postgraduate course.

Please specify the main subject of your postgraduate course.

If your postgraduate course subject is not listed here, please select 'other' and you will be prompted to enter this on the next page.

If 'other', please specify the subject of your current postgraduate course.**As a postgraduate, are you a full time or part time student?**

- ☐ Full time student
- ☐ Part time student
- ☐ Sometimes full time and sometimes part time

Do you study on campus or by distance learning?

- ☐ On campus
- ☐ On campus with work placement
- ☐ By distance learning
- ☐ Sometimes on campus and sometimes by distance

In addition to your postgraduate course, are you currently engaged in any of the following activities?**Please select all that apply.**

- | | |
|---|---|
| <input type="checkbox"/> Additional study not at postgraduate level | <input type="checkbox"/> Travelling |
| <input type="checkbox"/> Employment (full-time or part-time) | <input type="checkbox"/> Looking after the home |
| <input type="checkbox"/> Paid internship | <input type="checkbox"/> Caring for dependants |
| <input type="checkbox"/> Unpaid internship | <input type="checkbox"/> None of these |
| <input type="checkbox"/> Started/continued my own business | <input type="checkbox"/> Other activity (please specify) <input type="text"/> |
| <input type="checkbox"/> Unpaid volunteering | |

Why did you decide to undertake postgraduate study?**Please select the three most important reasons from the list below.**

- | | |
|---|--|
| <input type="checkbox"/> To enter a profession which requires or favours this qualification | <input type="checkbox"/> To fulfil a lifestyle choice |
| <input type="checkbox"/> To progress my career | <input type="checkbox"/> There were no suitable jobs when I graduated from my first degree |
| <input type="checkbox"/> To delay entry into the labour market | <input type="checkbox"/> Because there was funding available |
| <input type="checkbox"/> To pursue an intellectual interest | <input type="checkbox"/> To enhance my earnings |
| <input type="checkbox"/> To make a greater personal impact on society | <input type="checkbox"/> To expand my knowledge of a chosen subject |
| <input type="checkbox"/> To access professional networking opportunities | <input type="checkbox"/> To change my career |
| <input type="checkbox"/> To gain practical experience | <input type="checkbox"/> To enable progression to a higher degree (e.g. PhD) |
| <input type="checkbox"/> To develop particular skills | <input type="checkbox"/> Other (please specify) <input type="text"/> |

In addition to your York Masters Opportunity Scholarship, how do you pay for your postgraduate tuition fees? Please select all that apply.

- | | |
|--|--|
| <input type="checkbox"/> Formal loan (e.g. from bank) | <input type="checkbox"/> Government grant |
| <input type="checkbox"/> Loan from family/ personal acquaintance | <input type="checkbox"/> Income from a job |
| <input type="checkbox"/> Gift from family/ personal acquaintance | <input type="checkbox"/> My own savings |
| <input type="checkbox"/> Fee waiver (e.g. departmental scholarship) | <input type="checkbox"/> No other income |
| <input type="checkbox"/> Sponsorship (e.g. employer, armed services) | <input type="checkbox"/> Other (please specify) <input type="text"/> |
| <input type="checkbox"/> Research studentship (e.g. UK Research Council) | |

In addition to your York Masters Opportunity Scholarship, how are you paying for your living costs during your postgraduate studies? Please select all that apply.

- | | |
|---|--|
| <input type="checkbox"/> Formal loan (e.g. from bank) | <input type="checkbox"/> Government grant |
| <input type="checkbox"/> Loan from family/ personal acquaintance | <input type="checkbox"/> Income from a job |
| <input type="checkbox"/> Gift from family/ personal acquaintance | <input type="checkbox"/> My own savings |
| <input type="checkbox"/> Scholarship or bursary (e.g. departmental scholarship) | <input type="checkbox"/> No other income |
| <input type="checkbox"/> Sponsorship (e.g. employer, armed services) | <input type="checkbox"/> Other (please specify) <input type="text"/> |
| <input type="checkbox"/> Research studentship (e.g. UK Research Council) | |

How did you become aware of the York Masters Opportunity Scholarship scheme? Please select all that apply.

- | | |
|--|---|
| <input type="checkbox"/> University website [please specify institution] <input type="text"/> | <input type="checkbox"/> Student support services [please specify institution] <input type="text"/> |
| <input type="checkbox"/> Pathways Beyond Graduation Survey | <input type="checkbox"/> Personal contact, e.g. friend or family |
| <input type="checkbox"/> Academic department [please specify institution] <input type="text"/> | <input type="checkbox"/> Other [please specify] <input type="text"/> |
| <input type="checkbox"/> Careers service [please specify institution] <input type="text"/> | |

To what extent do you agree with the following statements about the York Masters Opportunity Scholarship scheme?

	Strongly disagree	Disagree	Neither agree nor disagree	Agree	Strongly Agree
The information I received about the York Masters Opportunity Scholarship was useful	<input type="radio"/>	<input type="radio"/>	<input type="radio"/>	<input type="radio"/>	<input type="radio"/>
The information I received about the York Masters Opportunity Scholarship was clear	<input type="radio"/>	<input type="radio"/>	<input type="radio"/>	<input type="radio"/>	<input type="radio"/>
I had all the information about the York Masters Opportunity Scholarship that I needed	<input type="radio"/>	<input type="radio"/>	<input type="radio"/>	<input type="radio"/>	<input type="radio"/>
The application for the York Masters Opportunity Scholarship was straightforward to complete	<input type="radio"/>	<input type="radio"/>	<input type="radio"/>	<input type="radio"/>	<input type="radio"/>
The application for the York Masters Opportunity Scholarship was time-consuming	<input type="radio"/>	<input type="radio"/>	<input type="radio"/>	<input type="radio"/>	<input type="radio"/>

As a result of receiving the York Masters Opportunity scholarship, to what extent do you agree or disagree with the following statements? Please select one option per row only

	Strongly disagree	Disagree	Neither Agree nor Disagree	Agree	Strongly Agree
The scholarship enabled me to take up my current studies	<input type="radio"/>	<input type="radio"/>	<input type="radio"/>	<input type="radio"/>	<input type="radio"/>
There is less need for me to take on paid work while I am studying	<input type="radio"/>	<input type="radio"/>	<input type="radio"/>	<input type="radio"/>	<input type="radio"/>
I am more able to participate in university/college life	<input type="radio"/>	<input type="radio"/>	<input type="radio"/>	<input type="radio"/>	<input type="radio"/>
I am more likely to continue and complete my course	<input type="radio"/>	<input type="radio"/>	<input type="radio"/>	<input type="radio"/>	<input type="radio"/>
The scholarship has enabled me to purchase resources for my studies that I would not otherwise have been able to afford	<input type="radio"/>	<input type="radio"/>	<input type="radio"/>	<input type="radio"/>	<input type="radio"/>
I would have enrolled on my course even without the financial support of the York Masters Opportunity Scholarship	<input type="radio"/>	<input type="radio"/>	<input type="radio"/>	<input type="radio"/>	<input type="radio"/>

Which format did your York Masters Opportunity scholarship award take? Please select only one option.

- ☐ Cash award
 ☐ Combination of cash and fee reduction
☐ Fee reduction
 ☐ Don't know

How satisfied are you with the format in which you received your scholarship?

» Cash award	<input type="text"/>
» Fee reduction	<input type="text"/>
» Combination of cash and fee reduction	<input type="text"/>
» Don't know	<input type="text"/>

Did you apply for any of the following postgraduate scholarship schemes for study in 2014-15? Please select all schemes that you applied for.

- ☐ University of Leeds Postgraduate Financial Support Package
☐ The University of Manchester Postgraduate Scholarship Scheme
☐ Newcastle University Postgraduate Scholarship Scheme
☐ The University of Sheffield Postgraduate Scholarship Scheme
☐ Warwick Taught Masters Scholarship Scheme
☐ Other postgraduate scholarship
☐ I did not apply for any other postgraduate scholarships
☐ Prefer not to answer

Please specify the outcome of your application to this scheme(s), i.e. whether or not you were successful in being offered a scholarship.

» University of Leeds Postgraduate Financial Support Package	<input type="text"/>
» The University of Manchester Postgraduate Scholarship Scheme	<input type="text"/>
» Newcastle University Postgraduate Scholarship Scheme	<input type="text"/>
» The University of Sheffield Postgraduate Scholarship Scheme	<input type="text"/>
» Warwick Taught Masters Scholarship Scheme	<input type="text"/>
» Other postgraduate scholarship	<input type="text"/>
» I did not apply for any other postgraduate scholarships	<input type="text"/>
» Prefer not to answer	<input type="text"/>

From the reasons listed below, please indicate why you chose the York Masters Opportunity Scholarship over those other scholarship(s) which you were also offered.

	Strongly disagree	Disagree	Neither agree nor disagree	Agree	Strongly agree
The York Masters Opportunity Scholarship offered a higher financial contribution to my tuition fees and/ or living costs	<input type="radio"/>	<input type="radio"/>	<input type="radio"/>	<input type="radio"/>	<input type="radio"/>
The York Masters Opportunity Scholarship offered a higher financial contribution to my living costs	<input type="radio"/>	<input type="radio"/>	<input type="radio"/>	<input type="radio"/>	<input type="radio"/>
The format of the York Masters Opportunity Scholarship was more useful to me (e.g. it included a cash element in addition to a fee waiver)	<input type="radio"/>	<input type="radio"/>	<input type="radio"/>	<input type="radio"/>	<input type="radio"/>
The York Masters Opportunity Scholarship postgraduate scholarship enabled me to study on my preferred course and/or institution	<input type="radio"/>	<input type="radio"/>	<input type="radio"/>	<input type="radio"/>	<input type="radio"/>
The York Masters Opportunity Scholarship enabled me to study at the same institution I had studied at before	<input type="radio"/>	<input type="radio"/>	<input type="radio"/>	<input type="radio"/>	<input type="radio"/>
The York Masters Opportunity Scholarship enabled me to study in a more cost-efficient way (e.g. it enabled me to save money by living at home, to continue in my current employment)	<input type="radio"/>	<input type="radio"/>	<input type="radio"/>	<input type="radio"/>	<input type="radio"/>
The York Masters Opportunity Scholarship enabled me to study at an institution that better fit my personal circumstances (e.g. convenient for family, friends or a care commitment to dependants)	<input type="radio"/>	<input type="radio"/>	<input type="radio"/>	<input type="radio"/>	<input type="radio"/>
Other [please specify] <input type="text"/>	<input type="radio"/>	<input type="radio"/>	<input type="radio"/>	<input type="radio"/>	<input type="radio"/>

Please use the space below to record any other comments you have on the York Masters Opportunity Scholarship.

Did you apply for any other postgraduate courses? (For example, you may have applied for other postgraduate courses at the time you applied for your current course, or you may have submitted applications previously or since).

- ☐ Yes
☐ No
☐ Don't know
☐ Prefer not to answer

Please list up to five postgraduate courses to which you have applied (do not include your current course).

	Institution	Main Subject
Course 1	<input type="text"/>	<input type="text"/>
Course 2	<input type="text"/>	<input type="text"/>
Course 3	<input type="text"/>	<input type="text"/>
Course 4	<input type="text"/>	<input type="text"/>
Course 5	<input type="text"/>	<input type="text"/>

From the reasons listed below, please indicate why you chose this postgraduate course over those others to which you applied.

	Agree	Somewhat Agree	Disagree
Funding was available for this course	<input type="radio"/>	<input type="radio"/>	<input type="radio"/>
This course offers professional networking opportunities	<input type="radio"/>	<input type="radio"/>	<input type="radio"/>
Personal reasons (e.g. family, friends or care commitment to dependants informed my choice)	<input type="radio"/>	<input type="radio"/>	<input type="radio"/>
This course has a good reputation	<input type="radio"/>	<input type="radio"/>	<input type="radio"/>
I wished to relocate	<input type="radio"/>	<input type="radio"/>	<input type="radio"/>
I picked this course because of its content	<input type="radio"/>	<input type="radio"/>	<input type="radio"/>
It is less expensive to undertake this course (e.g. it enables me to live at home)	<input type="radio"/>	<input type="radio"/>	<input type="radio"/>
I picked this course because I wanted to study at the same institution I had studied at before	<input type="radio"/>	<input type="radio"/>	<input type="radio"/>
This course offers better employment prospects	<input type="radio"/>	<input type="radio"/>	<input type="radio"/>
I picked this course because I wanted to study at this institution	<input type="radio"/>	<input type="radio"/>	<input type="radio"/>
I did not receive offers from the other course(s) to which			

I applied	<input type="radio"/>	<input type="radio"/>	<input type="radio"/>
Other (please specify) <input type="text"/>	<input type="radio"/>	<input type="radio"/>	<input type="radio"/>

Did you seek advice from any of the following sources when applying for or undertaking postgraduate study? Please select yes or no for each item.

	Yes	No
University careers service	<input type="radio"/>	<input type="radio"/>
My employer	<input type="radio"/>	<input type="radio"/>
Personal contacts (e.g. family or friends)	<input type="radio"/>	<input type="radio"/>
Academic or support staff at my current postgraduate institution	<input type="radio"/>	<input type="radio"/>
Academic or support staff at my undergraduate institution	<input type="radio"/>	<input type="radio"/>
Open day at my current postgraduate institution	<input type="radio"/>	<input type="radio"/>
UCAS	<input type="radio"/>	<input type="radio"/>
University rankings (e.g. Times Higher, the Guardian, QS)	<input type="radio"/>	<input type="radio"/>
Speaking to current students and/or alumni of current postgraduate institution/ course	<input type="radio"/>	<input type="radio"/>
Professional Association	<input type="radio"/>	<input type="radio"/>
Website of my current postgraduate institution	<input type="radio"/>	<input type="radio"/>
Bank or financial advisor	<input type="radio"/>	<input type="radio"/>
Unistats website	<input type="radio"/>	<input type="radio"/>
Other website or news source (please specify) <input type="text"/>	<input type="radio"/>	<input type="radio"/>
Other (please specify) <input type="text"/>	<input type="radio"/>	<input type="radio"/>
No advice consulted	<input type="radio"/>	<input type="radio"/>

Section 3. Activities since graduation

Section 3. Activities since graduation

This section of the survey asks about other activities you have undertaken since completing your **undergraduate** degree.

Since you completed your undergraduate degree, which of the following activities have you undertaken?

If you **did not undertake** an undergraduate degree, please think of the activities you have undertaken prior to starting your current postgraduate course.

Please **do not** count your **current postgraduate course** in the list below. Please select **all** that apply.

<input type="checkbox"/> Further study at postgraduate level (e.g. Masters, PhD)	<input type="checkbox"/> » Unpaid volunteering
<input type="checkbox"/> » Additional study not at postgraduate level	<input type="checkbox"/> » Travelling
<input type="checkbox"/> » Employment (full-time or part-time)	<input type="checkbox"/> » Looking after the home
<input type="checkbox"/> » Paid internship	<input type="checkbox"/> » Caring for dependants
<input type="checkbox"/> » Unpaid internship	<input type="checkbox"/> » None of these
<input type="checkbox"/> » Started/continued my own business	<input type="checkbox"/> » Other activity (please specify) <input type="text"/>

3ai. Previous postgraduates (most recent course)

The following questions are about your **previous** postgraduate course(s).

Please specify how **many** postgraduate courses you have previously undertaken. (For example, you may have completed both a Master's degree and a PGCE, or, a Master's degree and a PhD.)

Please **do not** include your current postgraduate course here.

Please answer the following questions about your **previous** postgraduate course.

If you have undertaken **more than one** postgraduate course, please answer these questions about your **most recent** postgraduate course. There will be an opportunity to provide details about the other postgraduate course(s) you have undertaken later in the survey.

Please specify the **main subject** of your previous postgraduate course.

If your postgraduate course subject is not listed here, please select 'other' and you will be prompted to enter this on the next page.

If 'other', please specify the subject of your previous postgraduate course.

At which institution did you study for this previous postgraduate course?

If you studied for your previous postgraduate course overseas, please select 'other', and you will be asked to provide details of this course on the next page.

If 'other', please specify the following for your postgraduate course:

Institution

Country

Which type of postgraduate course was this?

☐ Taught Master's degree (e.g. MA, MSc)

☐ Research Master's degree (e.g. MPhil, MRes)

☐ PhD/DPhil/ Professional Doctorate (e.g. EngD, EdD)

☐ PGCE leading to QTS

☐ PG Diploma

☐ PG Certificate

☐ Other (please specify)

During this postgraduate course, were you a full time or part time student?

☐ Full time student

☐ Part time student

☐ Sometimes full time and sometimes part time

During this postgraduate course, did you study on campus or by distance learning?

☐ On campus

☐ On campus with work placement

☐ By distance learning

☐ Sometimes on campus and sometimes by distance

During this postgraduate course, were you engaged in any of the following activities alongside your studies? Please select all that apply.

☐ Period of unemployment

☐ Started/continued my own business

☐ Additional study at postgraduate level

☐ Unpaid volunteering (not including internship)

☐ Looking after the home

☐ Additional study not at postgraduate level

☐ Employment (full-time or part-time)

☐ Caring for dependants

☐ Unpaid internship

☐ Travelling

☐ Other activity (please specify)

☐ Paid internship

Please indicate whether the following reasons were important in influencing your decision to undertake this postgraduate course.

If a reason was important, please indicate whether you think that this postgraduate course enabled it to be fulfilled.

	Important		If Important, was it fulfilled?		
	Yes	No	Fulfilled	Partially fulfilled	Unfulfilled
To pursue an intellectual interest	<input type="radio"/>	<input type="radio"/>	<input type="radio"/>	<input type="radio"/>	<input type="radio"/>
To expand my knowledge of a chosen subject	<input type="radio"/>	<input type="radio"/>	<input type="radio"/>	<input type="radio"/>	<input type="radio"/>
To gain practical experience	<input type="radio"/>	<input type="radio"/>	<input type="radio"/>	<input type="radio"/>	<input type="radio"/>

To develop particular skills	<input type="radio"/>	<input type="radio"/>	<input type="radio"/>	<input type="radio"/>	<input type="radio"/>
To progress my career	<input type="radio"/>	<input type="radio"/>	<input type="radio"/>	<input type="radio"/>	<input type="radio"/>
To enhance my earnings	<input type="radio"/>	<input type="radio"/>	<input type="radio"/>	<input type="radio"/>	<input type="radio"/>
To change my career	<input type="radio"/>	<input type="radio"/>	<input type="radio"/>	<input type="radio"/>	<input type="radio"/>
To enter a profession which requires or favours this qualification	<input type="radio"/>	<input type="radio"/>	<input type="radio"/>	<input type="radio"/>	<input type="radio"/>
To access professional networking opportunities	<input type="radio"/>	<input type="radio"/>	<input type="radio"/>	<input type="radio"/>	<input type="radio"/>
Because funding was available	<input type="radio"/>	<input type="radio"/>	<input type="radio"/>	<input type="radio"/>	<input type="radio"/>
To delay entry into the labour market	<input type="radio"/>	<input type="radio"/>	<input type="radio"/>	<input type="radio"/>	<input type="radio"/>
There were no suitable jobs when I graduated from my first degree	<input type="radio"/>	<input type="radio"/>	<input type="radio"/>	<input type="radio"/>	<input type="radio"/>
To enable progression to a higher degree (e.g. PhD)	<input type="radio"/>	<input type="radio"/>	<input type="radio"/>	<input type="radio"/>	<input type="radio"/>
To make a greater personal impact on society	<input type="radio"/>	<input type="radio"/>	<input type="radio"/>	<input type="radio"/>	<input type="radio"/>
To fulfil a lifestyle choice	<input type="radio"/>	<input type="radio"/>	<input type="radio"/>	<input type="radio"/>	<input type="radio"/>
Other (please specify)	<input type="radio"/>	<input type="radio"/>	<input type="radio"/>	<input type="radio"/>	<input type="radio"/>

How did you pay the postgraduate tuition fees for this course? Please select all that apply.

- | | |
|--|--|
| <input type="checkbox"/> Formal loan (e.g. from bank) | <input type="checkbox"/> Research studentship (e.g. UK Research Council) |
| <input type="checkbox"/> Loan from family/ personal acquaintance | <input type="checkbox"/> Government grant |
| <input type="checkbox"/> Gift from family/ personal acquaintance | <input type="checkbox"/> Income from a job |
| <input type="checkbox"/> Fee waiver (e.g. departmental scholarship) | <input type="checkbox"/> My own savings |
| <input type="checkbox"/> Sponsorship (e.g. employer, armed services) | <input type="checkbox"/> Other (please specify) <input type="text"/> |

How did you cover your living costs during this postgraduate course? Please select all that apply.

- | | |
|---|--|
| <input type="checkbox"/> Formal loan (e.g. from bank) | <input type="checkbox"/> Research studentship (e.g. UK Research Council) |
| <input type="checkbox"/> Loan from family/ personal acquaintance | <input type="checkbox"/> Government grant |
| <input type="checkbox"/> Gift from family/ personal acquaintance | <input type="checkbox"/> Income from a job |
| <input type="checkbox"/> Scholarship or bursary (e.g. departmental scholarship) | <input type="checkbox"/> My own savings |
| <input type="checkbox"/> Sponsorship (e.g. employer, armed services) | <input type="checkbox"/> Other (please specify) <input type="text"/> |

Did you apply for any other postgraduate courses in addition to this postgraduate course? (For example, you may have applied for a postgraduate course before, at the time of applying to, or since this postgraduate course).

- ☐ Yes
☐ No
☐ Don't know
☐ Prefer not to answer

Please list up to five postgraduate courses to which you have previously applied (do not include the postgraduate course that you previously undertook).

	Institution	Main Subject
Course 1	<input type="text"/>	<input type="text"/>
Course 2	<input type="text"/>	<input type="text"/>
Course 3	<input type="text"/>	<input type="text"/>
Course 4	<input type="text"/>	<input type="text"/>
Course 5	<input type="text"/>	<input type="text"/>

Why did you choose this postgraduate course over those others to which you applied?

Please select the three most important reasons from the list below.

- | | |
|--|---|
| <input type="checkbox"/> I favoured the content of my course | <input type="checkbox"/> My course offered better employment prospects |
| <input type="checkbox"/> Funding was available for my course | <input type="checkbox"/> I favoured the institution at which I studied |
| <input type="checkbox"/> My course had a good reputation | <input type="checkbox"/> I did not receive offers from the other course(s) to which I applied |

- ☐ Personal reasons (e.g. family, friends or care commitment to dependants informed my choice) ☐ I wished to relocate
- ☐ It was less expensive to undertake my course (e.g. it enabled me to live at home) ☐ Other (please specify)
- ☐ My course offered professional networking opportunities

**Did you seek advice from any of the following sources when applying for or undertaking this postgraduate course?
Please select yes or no for each item.**

	Yes	No
Unistats website	<input type="radio"/>	<input type="radio"/>
Speaking to current students and/or alumni of current postgraduate institution/ course	<input type="radio"/>	<input type="radio"/>
UCAS	<input type="radio"/>	<input type="radio"/>
Website of my current postgraduate institution	<input type="radio"/>	<input type="radio"/>
University rankings (e.g. Times Higher, the Guardian, QS)	<input type="radio"/>	<input type="radio"/>
Personal contacts (e.g. family or friends)	<input type="radio"/>	<input type="radio"/>
Academic or support staff at my undergraduate institution	<input type="radio"/>	<input type="radio"/>
Open day at my current postgraduate institution	<input type="radio"/>	<input type="radio"/>
Professional Association	<input type="radio"/>	<input type="radio"/>
University careers service	<input type="radio"/>	<input type="radio"/>
Academic or support staff at my current postgraduate institution	<input type="radio"/>	<input type="radio"/>
My employer	<input type="radio"/>	<input type="radio"/>
Bank or financial advisor	<input type="radio"/>	<input type="radio"/>
Other website or news source (please specify) <input type="text"/>	<input type="radio"/>	<input type="radio"/>
Other (please specify) <input type="text"/>	<input type="radio"/>	<input type="radio"/>
No advice consulted	<input type="radio"/>	<input type="radio"/>

3a.ii. Previous postgraduates (second most recent course)

Please answer the following questions about your **second most recent** postgraduate course.

Please specify the main subject of this postgraduate course.

If your postgraduate course subject is not listed here, please select 'other' and you will be prompted to enter this on the next page.

If 'other', please specify the subject of your previous postgraduate course.

At which institution did you study for this postgraduate course?

If you studied for your previous postgraduate course overseas, please select 'other', and you will be asked to provide details of this course on the next page.

If 'other', please specify the following for your postgraduate course:

Institution	<input type="text"/>
Country	<input type="text"/>

Which type of postgraduate course was this?

- ☐ Taught Master's degree (e.g. MA, MSc)
- ☐ Research Master's degree (e.g. MPhil, MRes)
- ☐ PhD/DPhil/ Professional Doctorate (e.g. EngD, EdD)
- ☐ PGCE leading to QTS
- ☐ PG Diploma
- ☐ PG Certificate

☐ Other (please specify)

During this postgraduate course, were you a full time or part time student?

- ☐ Full time student
- ☐ Part time student
- ☐ Sometimes full time and sometimes part time

During this postgraduate course, did you study on campus or by distance learning?

- ☐ On campus
- ☐ On campus with work placement
- ☐ By distance learning
- ☐ Sometimes on campus and sometimes by distance

During this postgraduate course, were you engaged in any of the following activities alongside your studies? Please select all that apply.

- | | |
|---|---|
| <input type="checkbox"/> Caring for dependants | <input type="checkbox"/> Additional study at postgraduate level |
| <input type="checkbox"/> Travelling | <input type="checkbox"/> Looking after the home |
| <input type="checkbox"/> Period of unemployment | <input type="checkbox"/> Unpaid internship |
| <input type="checkbox"/> Started/continued my own business | <input type="checkbox"/> Additional study not at postgraduate level |
| <input type="checkbox"/> Employment (full-time or part-time) | <input type="checkbox"/> Other activity (please specify) <input type="text"/> |
| <input type="checkbox"/> Unpaid volunteering (not including internship) | <input type="checkbox"/> Paid internship |

Please indicate whether the following reasons were important in influencing your decision to undertake this postgraduate course.

If a reason was important, please indicate whether you think that your previous postgraduate course enabled it to be fulfilled.

	Important		If Important, was it fulfilled?		
	Yes	No	Fulfilled	Partially fulfilled	Unfulfilled
To pursue an intellectual interest	<input type="radio"/>	<input type="radio"/>	<input type="radio"/>	<input type="radio"/>	<input type="radio"/>
To expand my knowledge of a chosen subject	<input type="radio"/>	<input type="radio"/>	<input type="radio"/>	<input type="radio"/>	<input type="radio"/>
To gain practical experience	<input type="radio"/>	<input type="radio"/>	<input type="radio"/>	<input type="radio"/>	<input type="radio"/>
To develop particular skills	<input type="radio"/>	<input type="radio"/>	<input type="radio"/>	<input type="radio"/>	<input type="radio"/>
To progress my career	<input type="radio"/>	<input type="radio"/>	<input type="radio"/>	<input type="radio"/>	<input type="radio"/>
To enhance my earnings	<input type="radio"/>	<input type="radio"/>	<input type="radio"/>	<input type="radio"/>	<input type="radio"/>
To change my career	<input type="radio"/>	<input type="radio"/>	<input type="radio"/>	<input type="radio"/>	<input type="radio"/>
To enter a profession which requires or favours this qualification	<input type="radio"/>	<input type="radio"/>	<input type="radio"/>	<input type="radio"/>	<input type="radio"/>
To access professional networking opportunities	<input type="radio"/>	<input type="radio"/>	<input type="radio"/>	<input type="radio"/>	<input type="radio"/>
Because funding was available	<input type="radio"/>	<input type="radio"/>	<input type="radio"/>	<input type="radio"/>	<input type="radio"/>
To delay entry into the labour market	<input type="radio"/>	<input type="radio"/>	<input type="radio"/>	<input type="radio"/>	<input type="radio"/>
There were no suitable jobs when I graduated from my first degree	<input type="radio"/>	<input type="radio"/>	<input type="radio"/>	<input type="radio"/>	<input type="radio"/>
To enable progression to a higher degree (e.g. PhD)	<input type="radio"/>	<input type="radio"/>	<input type="radio"/>	<input type="radio"/>	<input type="radio"/>
To make a greater personal impact on society	<input type="radio"/>	<input type="radio"/>	<input type="radio"/>	<input type="radio"/>	<input type="radio"/>
To fulfil a lifestyle choice	<input type="radio"/>	<input type="radio"/>	<input type="radio"/>	<input type="radio"/>	<input type="radio"/>
Other (please specify)	<input type="radio"/>	<input type="radio"/>	<input type="radio"/>	<input type="radio"/>	<input type="radio"/>

How did you pay the postgraduate tuition fees for this course? Please select all that apply.

- | | |
|--|--|
| <input type="checkbox"/> Formal loan (e.g. from bank) | <input type="checkbox"/> Research studentship (e.g. UK Research Council) |
| <input type="checkbox"/> Loan from family/ personal acquaintance | <input type="checkbox"/> Government grant |
| <input type="checkbox"/> Gift from family/ personal acquaintance | <input type="checkbox"/> Income from a job |
| <input type="checkbox"/> Fee waiver (e.g. departmental scholarship) | <input type="checkbox"/> My own savings |
| <input type="checkbox"/> Sponsorship (e.g. employer, armed services) | <input type="checkbox"/> Other (please specify) <input type="text"/> |

How did you cover your living costs during this postgraduate course? Please select all that apply.

- | | |
|---|--|
| <input type="checkbox"/> Formal loan (e.g. from bank) | <input type="checkbox"/> Research studentship (e.g. UK Research Council) |
| <input type="checkbox"/> Loan from family/ personal acquaintance | <input type="checkbox"/> Government grant |
| <input type="checkbox"/> Gift from family/ personal acquaintance | <input type="checkbox"/> Income from a job |
| <input type="checkbox"/> Scholarship or bursary (e.g. departmental scholarship) | <input type="checkbox"/> My own savings |
| <input type="checkbox"/> Sponsorship (e.g. employer, armed services) | <input type="checkbox"/> Other (please specify) <input type="text"/> |

Did you apply for any other postgraduate courses in addition to this postgraduate course? (For example, you may have applied for a postgraduate course before, at the time of applying to, or since this postgraduate course).

- ☐ Yes
☐ No
☐ Don't know
☐ Prefer not to answer

Please list up to five postgraduate courses to which you have previously applied (do not include the postgraduate course that you previously undertook).

	Institution	Main Subject
Course 1	<input type="text"/>	<input type="text"/>
Course 2	<input type="text"/>	<input type="text"/>
Course 3	<input type="text"/>	<input type="text"/>
Course 4	<input type="text"/>	<input type="text"/>
Course 5	<input type="text"/>	<input type="text"/>

Why did you choose this postgraduate course over those others to which you applied?**Please select the three most important reasons from the list below.**

- | | |
|--|--|
| <input type="checkbox"/> Personal reasons (e.g. family, friends or care commitment to dependants informed my choice) | <input type="checkbox"/> I did not receive offers from the other course(s) to which I applied |
| <input type="checkbox"/> I wished to relocate | <input type="checkbox"/> It was less expensive to undertake my course (e.g. it enabled me to live at home) |
| <input type="checkbox"/> I favoured the institution at which I studied | <input type="checkbox"/> Funding was available for my course |
| <input type="checkbox"/> My course had a good reputation | <input type="checkbox"/> My course offered better employment prospects |
| <input type="checkbox"/> I favoured the content of my course | <input type="checkbox"/> Other (please specify) <input type="text"/> |
| <input type="checkbox"/> My course offered professional networking opportunities | |

Did you seek advice from any of the following sources when applying for or undertaking this postgraduate course? Please select yes or no for each item.

	Yes	No
Website of my current postgraduate institution	<input type="radio"/>	<input type="radio"/>
Professional Association	<input type="radio"/>	<input type="radio"/>
Academic or support staff at my undergraduate institution	<input type="radio"/>	<input type="radio"/>
Academic or support staff at my current postgraduate institution	<input type="radio"/>	<input type="radio"/>
Personal contacts (e.g. family or friends)	<input type="radio"/>	<input type="radio"/>
My employer	<input type="radio"/>	<input type="radio"/>
Speaking to current students and/or alumni of current postgraduate institution/ course	<input type="radio"/>	<input type="radio"/>
University careers service	<input type="radio"/>	<input type="radio"/>
UCAS	<input type="radio"/>	<input type="radio"/>
Open day at my current postgraduate institution	<input type="radio"/>	<input type="radio"/>
University rankings (e.g. Times Higher, the Guardian, QS)	<input type="radio"/>	<input type="radio"/>
Unistats website	<input type="radio"/>	<input type="radio"/>
Bank or financial advisor	<input type="radio"/>	<input type="radio"/>
Other website or news source (please specify) <input type="text"/>	<input type="radio"/>	<input type="radio"/>
Other (please specify) <input type="text"/>	<input type="radio"/>	<input type="radio"/>
No advice consulted		

3b. Post-graduation employment

The following questions are about your current and previous employment (including employment, self-employment, paid internships, unpaid internships, and unpaid volunteering), since completing your undergraduate degree.

How many positions (including employment, self-employment, paid internships, unpaid internships, and unpaid volunteering), have you had since completing your undergraduate degree?

If you did not undertake an undergraduate degree, please detail your current employment, and employment prior to starting your current postgraduate course.

3bi. Position 1

The following questions are about your most recent position.

Was or is this position:

☐ Paid employment

☐ Unpaid volunteering

☐ Paid internship

☐ Self-employed

☐ Unpaid internship

☐ Other (please specify)

What is/ was your job title?

Was or is this position full time or part time?

☐ Full-time

☐ Part-time

In which of the following sectors was or is this position based?

In which 'other' sector was or is this position based?

Please specify the gross annual pay you received for this position i.e. per annum salary before income tax, National Insurance and other deductions, and including any overtime, bonuses, commission, tips. If you have worked part-time or in short-term jobs, please estimate your pro-rata salary for the past year.

Annual earnings before tax:

Which of the following qualifications were required for this position? Please select all that apply.

☐ A levels or Scottish Highers

☐ Other professional/vocational training

☐ An undergraduate degree in a particular subject

☐ Employment experience/training in this organisation in another job

☐ An undergraduate degree in any subject

☐ Employment experience/training in another organisation

☐ A postgraduate qualification

☐ No qualification

☐ Other academic qualification

Would you consider this position to be a graduate-level appointment, i.e. a 'graduate job'?

Yes

☐

No

☐

Don't know

☐
3bii. Position 2

The following questions are about your second most recent position.

Was or is this position:

- ☐ Paid employment
- ☐ Paid internship
- ☐ Unpaid internship
- ☐ Unpaid volunteering
- ☐ Self-employed
- ☐ Other (please specify)

What is/ was your job title?

Was or is this position full time or part time?

- ☐ Full-time
- ☐ Part-time

In which of the following sectors was or is this position based?

In which 'other' sector was or is this position based?

Please specify the gross annual pay you received for this position i.e. per annum salary before income tax, National Insurance and other deductions, and including any overtime, bonuses, commission, tips. If you have worked part-time or in short-term jobs, please estimate your pro-rata salary for the past year.

Annual earnings before tax:

Which of the following qualifications were required for this position? Please select **all** that apply.

- ☐ A levels or Scottish Highers
- ☐ An undergraduate degree in a particular subject
- ☐ An undergraduate degree in any subject
- ☐ A postgraduate qualification
- ☐ Other academic qualification
- ☐ Other professional/vocational training
- ☐ Employment experience/training in this organisation in another job
- ☐ Employment experience/training in another organisation
- ☐ No qualification

Would you consider this position to be a graduate-level appointment, i.e. a 'graduate job'?

- Yes
- No
- Don't know

3biii. Position 3

The following questions are about your third most recent position.

Was or is this position:

- ☐ Paid employment
- ☐ Paid internship
- ☐ Unpaid internship
- ☐ Unpaid volunteering
- ☐ Self-employed
- ☐ Other (please specify)

What is/ was your job title?

Was or is this position full time or part time?

- ☐ Full-time
- ☐ Part-time

In which of the following sectors was or is this position based?

In which 'other' sector was or is this position based?

Please specify the **gross annual pay** you received for this position i.e. per annum salary before income tax, National Insurance and other deductions, and including any overtime, bonuses, commission, tips. If you have worked part-time or in short-term jobs, please estimate your pro-rata salary for the past year.

Annual earnings before tax:

Which of the following qualifications were required for this position? Please select all that apply.

- | | |
|--|---|
| <input type="checkbox"/> A levels or Scottish Highers | <input type="checkbox"/> Other professional/vocational training |
| <input type="checkbox"/> An undergraduate degree in a particular subject | <input type="checkbox"/> Employment experience/training in this organisation in another job |
| <input type="checkbox"/> An undergraduate degree in any subject | <input type="checkbox"/> Employment experience/training in another organisation |
| <input type="checkbox"/> A postgraduate qualification | <input type="checkbox"/> No qualification |
| <input type="checkbox"/> Other academic qualification | |

Would you consider this position to be a graduate-level appointment, i.e. a 'graduate job'?

- | | | |
|-----------------------|-----------------------|-----------------------|
| Yes | No | Don't know |
| <input type="radio"/> | <input type="radio"/> | <input type="radio"/> |

Section 4. Future Plans

Section 4. Future plans

In this section of the survey we ask a few questions about your plans for the future

Which of the following statements best describes your plans within 6 months after graduating from your current postgraduate course? Please select all that apply.

- | | |
|--|---|
| <input type="checkbox"/> I will be in a (full or part time) job that I have already been offered or accepted | <input type="checkbox"/> I intend to undertake volunteering work |
| <input type="checkbox"/> I intend to go into further study at postgraduate level | <input type="checkbox"/> I intend to undertake an internship |
| <input type="checkbox"/> I intend to be self-employed or undertaking freelance work | <input type="checkbox"/> I intend to take a gap year/break from academic study |
| <input type="checkbox"/> I intend to look for a job | <input type="checkbox"/> I intend to go into further study not at postgraduate level |
| <input type="checkbox"/> I intend to enrol on/begin a graduate scheme or programme | <input type="checkbox"/> I will continue to be employed in my current (full or part time) job |
| <input type="checkbox"/> I intend to set up my own business | <input type="checkbox"/> I am unsure as to what I will do next |
| <input type="checkbox"/> I intend to travel abroad | <input type="checkbox"/> Other (please specify) <input type="text"/> |
| <input type="checkbox"/> I will be self-employed or undertake freelance work | |

What are your plans and aspirations for the longer-term future? You may comment on professional and personal ambitions.

Have you applied for further postgraduate study after your current postgraduate course finishes?

- ☐ Yes, I have applied for postgraduate study and have received an offer
- ☐ Yes, I have applied for postgraduate study and I am awaiting an offer
- ☐ No, I have not yet applied for further postgraduate study
- ☐ Prefer not to say

4ai: Applied for further PG study, hold offer

Please specify the main subject of the postgraduate course for which you have an offer.

If your postgraduate course subject is not listed here, please select 'other' and you will be prompted to enter this on the next page.

If 'other', please specify the main subject(s) of the postgraduate course for which you have an offer.

At which institution is the postgraduate course for which you have an offer?

If this postgraduate course is overseas, please select 'other', and you will be asked to provide details of this course on the next page.

If 'other', please specify the following for the postgraduate course for which you have an offer:

Institution

Country

Which type of postgraduate course do you have an offer for?

- ☐ Taught Master's degree (e.g. MA, MSc)
- ☐ Research Master's degree (e.g. MPhil, MRes)
- ☐ PhD/DPhil/ Professional Doctorate (e.g. EngD, EdD)
- ☐ PGCE leading to QTS
- ☐ PG Diploma
- ☐ PG Certificate
- ☐ Other (please specify)

Did you apply for full time study or part time study?

- ☐ Full time study
- ☐ Part time study
- ☐ A combination of full time and part time study

How do you intend to pay for your postgraduate tuition fees? Please select all that apply.

- | | |
|--|--|
| <input type="checkbox"/> Formal loan (e.g. from bank) | <input type="checkbox"/> Research studentship (e.g. UK Research Council) |
| <input type="checkbox"/> Loan from family/ personal acquaintance | <input type="checkbox"/> Government grant |
| <input type="checkbox"/> Gift from family/ personal acquaintance | <input type="checkbox"/> Income from a job |
| <input type="checkbox"/> Fee waiver (e.g. departmental scholarship) | <input type="checkbox"/> My own savings |
| <input type="checkbox"/> Sponsorship (e.g. employer, armed services) | <input type="checkbox"/> Other (please specify) <input type="text"/> |

How do you intend to cover your living costs during your postgraduate studies? Please select all that apply.

- | | |
|---|--|
| <input type="checkbox"/> Formal loan (e.g. from bank) | <input type="checkbox"/> Research studentship (e.g. UK Research Council) |
| <input type="checkbox"/> Loan from family/ personal acquaintance | <input type="checkbox"/> Government grant |
| <input type="checkbox"/> Gift from family/ personal acquaintance | <input type="checkbox"/> Income from a job |
| <input type="checkbox"/> Scholarship or bursary (e.g. departmental scholarship) | <input type="checkbox"/> My own savings |
| <input type="checkbox"/> Sponsorship (e.g. employer, armed services) | <input type="checkbox"/> Other (please specify) <input type="text"/> |

Please indicate how important the following reasons were in influencing your decision to apply for postgraduate study.

	Very Important	Somewhat Important	Not Important
To pursue an intellectual interest	<input type="radio"/>	<input type="radio"/>	<input type="radio"/>
To expand my knowledge of a chosen subject	<input type="radio"/>	<input type="radio"/>	<input type="radio"/>
To gain practical experience	<input type="radio"/>	<input type="radio"/>	<input type="radio"/>
To develop particular skills	<input type="radio"/>	<input type="radio"/>	<input type="radio"/>
To progress my career	<input type="radio"/>	<input type="radio"/>	<input type="radio"/>
To enhance my earnings	<input type="radio"/>	<input type="radio"/>	<input type="radio"/>
To change my career	<input type="radio"/>	<input type="radio"/>	<input type="radio"/>
To enter a profession which requires or favours this qualification	<input type="radio"/>	<input type="radio"/>	<input type="radio"/>
To access professional networking opportunities	<input type="radio"/>	<input type="radio"/>	<input type="radio"/>
Because funding was available			

To delay entry into the labour market (e.g. I did not want to work)	<input type="radio"/>	<input type="radio"/>	<input type="radio"/>
There were no suitable jobs when I graduated from my first degree	<input type="radio"/>	<input type="radio"/>	<input type="radio"/>
To enable progression to a higher degree (e.g. PhD)	<input type="radio"/>	<input type="radio"/>	<input type="radio"/>
To make a greater personal impact on society	<input type="radio"/>	<input type="radio"/>	<input type="radio"/>
To fulfil a lifestyle choice	<input type="radio"/>	<input type="radio"/>	<input type="radio"/>
Other (please specify) <input type="text"/>	<input type="radio"/>	<input type="radio"/>	<input type="radio"/>

4a.ii. Applied for further PG study, awaiting offer

Please specify the main subject of the postgraduate course to which you have applied.

If your postgraduate course subject is not listed here, please select 'other' and you will be prompted to enter this on the next page.

If 'other', please specify the main subject(s) of the postgraduate course to which you have applied.

At which institution is the postgraduate course to which you have applied?

If this postgraduate course is overseas, please select 'other', and you will be asked to provide details of this course on the next page.

If 'other', please specify the following for the postgraduate course to which you have applied:

Institution	<input type="text"/>
Country	<input type="text"/>

Which type of postgraduate course did you apply for?

- ☐ Taught Master's degree (e.g. MA, MSc)
☐ Research Master's degree (e.g. MPhil, MRes)
☐ PhD/DPhil/ Professional Doctorate (e.g. EngD, EdD)
☐ PGCE leading to QTS
☐ PG Diploma
☐ PG Certificate
☐ Other (please specify)

Did you apply for full time study or part time study?

- ☐ Full time study
☐ Part time study
☐ A combination of full time and part time study

How do you intend to pay for your postgraduate tuition fees? Please select **all** that apply.

- | | |
|--|--|
| <input type="checkbox"/> Formal loan (e.g. from bank) | <input type="checkbox"/> Research studentship (e.g. UK Research Council) |
| <input type="checkbox"/> Loan from family/ personal acquaintance | <input type="checkbox"/> Government grant |
| <input type="checkbox"/> Gift from family/ personal acquaintance | <input type="checkbox"/> Income from a job |
| <input type="checkbox"/> Fee waiver (e.g. departmental scholarship) | <input type="checkbox"/> My own savings |
| <input type="checkbox"/> Sponsorship (e.g. employer, armed services) | <input type="checkbox"/> Other (please specify) <input type="text"/> |

How do you intend to cover your living costs during your postgraduate studies? Please select **all** that apply.

- | | |
|--|--|
| <input type="checkbox"/> Formal loan (e.g. from bank) | <input type="checkbox"/> Research studentship (e.g. UK Research Council) |
| <input type="checkbox"/> Loan from family/ personal acquaintance | <input type="checkbox"/> Government grant |

- ☐ Gift from family/ personal acquaintance
 ☐ Income from a job
☐ Scholarship or bursary (e.g. departmental scholarship)
 ☐ My own savings
☐ Sponsorship (e.g. employer, armed services)
 ☐ Other (please specify)

Please indicate how important the following reasons were in influencing your decision to apply for postgraduate study.

	Very Important	Somewhat Important	Not Important
To pursue an intellectual interest	<input type="radio"/>	<input type="radio"/>	<input type="radio"/>
To expand my knowledge of a chosen subject	<input type="radio"/>	<input type="radio"/>	<input type="radio"/>
To gain practical experience	<input type="radio"/>	<input type="radio"/>	<input type="radio"/>
To develop particular skills	<input type="radio"/>	<input type="radio"/>	<input type="radio"/>
To progress my career	<input type="radio"/>	<input type="radio"/>	<input type="radio"/>
To enhance my earnings	<input type="radio"/>	<input type="radio"/>	<input type="radio"/>
To change my career	<input type="radio"/>	<input type="radio"/>	<input type="radio"/>
To enter a profession which requires or favours this qualification	<input type="radio"/>	<input type="radio"/>	<input type="radio"/>
To access professional networking opportunities	<input type="radio"/>	<input type="radio"/>	<input type="radio"/>
Because funding was available	<input type="radio"/>	<input type="radio"/>	<input type="radio"/>
To delay entry into the labour market (e.g. I did not want to work)	<input type="radio"/>	<input type="radio"/>	<input type="radio"/>
There were no suitable jobs when I graduated from my first degree	<input type="radio"/>	<input type="radio"/>	<input type="radio"/>
To enable progression to a higher degree (e.g. PhD)	<input type="radio"/>	<input type="radio"/>	<input type="radio"/>
To make a greater personal impact on society	<input type="radio"/>	<input type="radio"/>	<input type="radio"/>
To fulfil a lifestyle choice	<input type="radio"/>	<input type="radio"/>	<input type="radio"/>
Other (please specify) <input type="text"/>	<input type="radio"/>	<input type="radio"/>	<input type="radio"/>

Advice Q (for all who have applied for further PG study)

Did you seek advice from any of the following sources when applying for further postgraduate study? Please select yes or no for each item.

	Yes	No
Open day at my current postgraduate institution	<input type="radio"/>	<input type="radio"/>
Academic or support staff at my undergraduate institution	<input type="radio"/>	<input type="radio"/>
Website of my current postgraduate institution	<input type="radio"/>	<input type="radio"/>
UCAS	<input type="radio"/>	<input type="radio"/>
Bank or financial advisor	<input type="radio"/>	<input type="radio"/>
Unistats website	<input type="radio"/>	<input type="radio"/>
Professional Association	<input type="radio"/>	<input type="radio"/>
University careers service	<input type="radio"/>	<input type="radio"/>
University rankings (e.g. Times Higher, the Guardian, QS)	<input type="radio"/>	<input type="radio"/>
Speaking to current students and/or alumni of current postgraduate institution/ course	<input type="radio"/>	<input type="radio"/>
Personal contacts (e.g. family or friends)	<input type="radio"/>	<input type="radio"/>
My employer	<input type="radio"/>	<input type="radio"/>
Academic or support staff at my current postgraduate institution	<input type="radio"/>	<input type="radio"/>
Other website or news source (please specify) <input type="text"/>	<input type="radio"/>	<input type="radio"/>
Other (please specify) <input type="text"/>	<input type="radio"/>	<input type="radio"/>
No advice consulted	<input type="radio"/>	<input type="radio"/>

4aiii. Intend, but not yet applied, for further PG study

The following questions are about the postgraduate course which you intend to apply to. If you are undecided about any of these characteristics, please select 'don't know' in your answer.

Please specify the main subject of the postgraduate course that you intend to apply to.

If your postgraduate course subject is not listed here, please select 'other' and you will be prompted to enter this on the next page.

If 'other', please specify the main subject(s) of the postgraduate course that you intend to apply to.

At which institution is the postgraduate course that you intend to apply to?

If this postgraduate course is overseas, please select 'other', and you will be asked to provide details of this course on the next page.

If 'other', please specify the following for the postgraduate course that you intend to apply to:

Institution	<input type="text"/>
Country	<input type="text"/>

Which type of postgraduate course do you intend to apply to?

- | | |
|--|---|
| <input type="radio"/> Taught Master's degree (e.g. MA, MSc) | <input type="radio"/> PG Diploma |
| <input type="radio"/> Research Master's degree (e.g. MPhil, MRes) | <input type="radio"/> PG Certificate |
| <input type="radio"/> PhD/DPhil/ Professional Doctorate (e.g. EngD, EdD) | <input type="radio"/> Don't know |
| <input type="radio"/> PGCE leading to QTS | <input type="radio"/> Other (please specify) <input type="text"/> |

Did you intend to study full time or part time?

- | | |
|---------------------------------------|--|
| <input type="radio"/> Full time study | <input type="radio"/> A combination of full time and part time study |
| <input type="radio"/> Part time study | <input type="radio"/> Don't know |

How do you intend to pay for your postgraduate tuition fees? Please select all that apply.

- | | |
|--|--|
| <input type="checkbox"/> Formal loan (e.g. from bank) | <input type="checkbox"/> Government grant |
| <input type="checkbox"/> Loan from family/ personal acquaintance | <input type="checkbox"/> Income from a job |
| <input type="checkbox"/> Gift from family/ personal acquaintance | <input type="checkbox"/> My own savings |
| <input type="checkbox"/> Fee waiver (e.g. departmental scholarship) | <input type="checkbox"/> Don't know |
| <input type="checkbox"/> Sponsorship (e.g. employer, armed services) | <input type="checkbox"/> Other (please specify) <input type="text"/> |
| <input type="checkbox"/> Research studentship (e.g. UK Research Council) | |

How do you intend to cover your living costs during your postgraduate studies? Please select all that apply.

- | | |
|---|--|
| <input type="checkbox"/> Formal loan (e.g. from bank) | <input type="checkbox"/> Government grant |
| <input type="checkbox"/> Loan from family/ personal acquaintance | <input type="checkbox"/> Income from a job |
| <input type="checkbox"/> Gift from family/ personal acquaintance | <input type="checkbox"/> My own savings |
| <input type="checkbox"/> Scholarship or bursary (e.g. departmental scholarship) | <input type="checkbox"/> Don't know |
| <input type="checkbox"/> Sponsorship (e.g. employer, armed services) | <input type="checkbox"/> Other (please specify) <input type="text"/> |
| <input type="checkbox"/> Research studentship (e.g. UK Research Council) | |

Please indicate how important the following reasons were in influencing your intention to apply for postgraduate study.

	Very Important	Somewhat Important	Not Important
To pursue an intellectual interest	<input type="radio"/>	<input type="radio"/>	<input type="radio"/>
To expand my knowledge of a chosen subject	<input type="radio"/>	<input type="radio"/>	<input type="radio"/>
To gain practical experience	<input type="radio"/>	<input type="radio"/>	<input type="radio"/>
To develop particular skills	<input type="radio"/>	<input type="radio"/>	<input type="radio"/>
To progress my career	<input type="radio"/>	<input type="radio"/>	<input type="radio"/>
To enhance my earnings	<input type="radio"/>	<input type="radio"/>	<input type="radio"/>
To change my career	<input type="radio"/>	<input type="radio"/>	<input type="radio"/>
To enter a profession which requires or favours this qualification	<input type="radio"/>	<input type="radio"/>	<input type="radio"/>
To access professional networking opportunities			

Because funding was available	<input type="radio"/>	<input type="radio"/>	<input type="radio"/>
To delay entry into the labour market (e.g. I did not want to work)	<input type="radio"/>	<input type="radio"/>	<input type="radio"/>
There were no suitable jobs when I graduated from my first degree	<input type="radio"/>	<input type="radio"/>	<input type="radio"/>
To enable progression to a higher degree (e.g. PhD)	<input type="radio"/>	<input type="radio"/>	<input type="radio"/>
To make a greater personal impact on society	<input type="radio"/>	<input type="radio"/>	<input type="radio"/>
To fulfil a lifestyle choice	<input type="radio"/>	<input type="radio"/>	<input type="radio"/>
Other (please specify) <input type="text"/>	<input type="radio"/>	<input type="radio"/>	<input type="radio"/>

Section 5. Personal characteristics

Section 5. Personal Characteristics

In this final section of the survey, we ask about your personal characteristics. This information will help us to understand whether demographic and personal characteristics appear to be related to postgraduate study choices and activities undertaken prior. Please answer as many questions as you can.

Are you:

☐ Male

☐ Female

☐ Prefer not to say

What is your age?

Which of the following statements best describes your current marital or relationship status?

☐ Single (never married)

☐ Married/ Civil partnership and separated from partner

☐ In a relationship

☐ Divorced

☐ In a relationship and living with partner

☐ Widowed

☐ Married/ Civil partnership and living with partner

☐ Prefer not to answer

What is your ethnic group?

☐ White British

☐ Asian or Asian British - Bangladeshi

☐ Irish Traveller

☐ Chinese

☐ Gypsy or Traveller

☐ Other Asian background

☐ Other White background

☐ Mixed - White and Black Caribbean

☐ Black - African

☐ Mixed - White and Black African

☐ Black - Caribbean

☐ Mixed - White and Asian

☐ Black British

☐ Other Mixed background

☐ Other Black background

☐ Other Ethnic background

☐ Asian or Asian British - Indian

☐ Not known

☐ Asian or Asian British - Pakistani

☐ Prefer not to answer

The next two questions are about the occupations and qualifications of your parents. This includes natural parents, adoptive parents, step-parents, carers or guardians, who were most involved in your upbringing.

Thinking back to when you were 14 years old, what occupations did your parents have?

	Employment status	Job title (if applicable)
Parent 1	<input type="text"/>	<input type="text"/>
Parent 2	<input type="text"/>	<input type="text"/>
Parent 3	<input type="text"/>	<input type="text"/>
Parent 4	<input type="text"/>	<input type="text"/>

Which of the following education qualifications did/ do your parents have? Please select all that apply.

	Parent 1	Parent 2	Parent 3	Parent 4
Undergraduate degree (e.g. BA, BSc)	<input type="checkbox"/>	<input type="checkbox"/>	<input type="checkbox"/>	<input type="checkbox"/>
Higher national certificate or diploma (e.g. BTEC HNC/ HND)	<input type="checkbox"/>	<input type="checkbox"/>	<input type="checkbox"/>	<input type="checkbox"/>
Professional qualifications (e.g. Chartered Builder, Engineer, Accountant, Secretary)	<input type="checkbox"/>	<input type="checkbox"/>	<input type="checkbox"/>	<input type="checkbox"/>
Postgraduate degree (e.g. MA, MSc)	<input type="checkbox"/>	<input type="checkbox"/>	<input type="checkbox"/>	<input type="checkbox"/>
Postgraduate diploma or certificate (e.g. PGCE)	<input type="checkbox"/>	<input type="checkbox"/>	<input type="checkbox"/>	<input type="checkbox"/>
Higher degree (e.g. MPhil, MRes, PhD)	<input type="checkbox"/>	<input type="checkbox"/>	<input type="checkbox"/>	<input type="checkbox"/>
None of the above	<input type="checkbox"/>	<input type="checkbox"/>	<input type="checkbox"/>	<input type="checkbox"/>
Don't know	<input type="checkbox"/>	<input type="checkbox"/>	<input type="checkbox"/>	<input type="checkbox"/>
Prefer not to answer	<input type="checkbox"/>	<input type="checkbox"/>	<input type="checkbox"/>	<input type="checkbox"/>
Other (please specify) <input type="text"/>	<input type="checkbox"/>	<input type="checkbox"/>	<input type="checkbox"/>	<input type="checkbox"/>

Please provide the full postcode for your home address when you applied for your undergraduate degree.

Please confirm the region of your home address when you applied for your undergraduate degree.

Which of the following statements, if any, apply to you? Please select all that apply to you.

- ☐ I have a child/children aged under 16 living with me some or all of the time who I care for
- ☐ I have a child/children aged 16 or over living with me some or all of the time who I care for
- ☐ I have adult dependant(s) living with me some or all of the time who I care for
- ☐ I have adult dependant(s) who do not live with me who I care for
- ☐ None of these
- ☐ Prefer not to answer

How many people in total do you currently care for?

1	2	3	4	5	6	7	8	9+	Prefer not to answer
<input type="radio"/>	<input type="radio"/>	<input type="radio"/>	<input type="radio"/>	<input type="radio"/>	<input type="radio"/>	<input type="radio"/>	<input type="radio"/>	<input type="radio"/>	<input type="radio"/>

Do you have any long term illness, health problem or disability?

- ☐ Yes
- ☐ No
- ☐ Prefer not to answer

Please indicate what this/these condition(s) is/are. Please select all that apply.

- | | |
|---|---|
| <input type="checkbox"/> A specific learning difficulty such as dyslexia, dyspraxia or ADHD | <input type="checkbox"/> Mental health difficulties |
| <input type="checkbox"/> Blind/partially sighted | <input type="checkbox"/> Autistic spectrum disorders |
| <input type="checkbox"/> Deaf/hearing impairment | <input type="checkbox"/> An unseen illness or disability (e.g. diabetes, epilepsy, asthma) |
| <input type="checkbox"/> Wheelchair user/mobility difficulties | <input type="checkbox"/> Other long-term illness or disability (please specify)
<input type="text"/> |
| <input type="checkbox"/> Personal care support | <input type="checkbox"/> Prefer not to answer |

Have you ever been in local authority care or supported by the Foyer Federation?

- ☐ Yes
- ☐ No
- ☐ Prefer not to answer

Please indicate the total amount of time you have spent in local authority care or Foyer Federation accommodation.

- ☐ Less than 1 year
- ☐ 1 year to less than 3 years
- ☐ 3 years to less than 5 years

- ☐ 5 years to less than 10 years
- ☐ 10 or more years
- ☐ Prefer not to answer

Prize draw option question

Thank you for being part of the Pathways to Postgraduate Study Survey.

Do you wish to enter into the prize draw to win a £500 or one of two £200 Amazon vouchers?

If you select yes, you will be asked to provide your email address. Email addresses will be stored separately to survey responses and used solely for the purposes of the prize draw. They will not be passed to any third party without your permission and will be deleted once prizes have been allocated.

☐ Yes, I wish to enter the prize draw

☐ No, I do not wish to enter the prize draw

Appendix D. Admissions study data model

PSS 'Understanding the Student' strand

POSTGRADUATE APPLICATION DATA MODEL

This document sets out a data model for the extraction of application data to inform analysis as part of the 'Understanding the Student' (UtS) strand of work in the *Widening Access to Postgraduate Study and the Professions* project.

Following a consultation exercise, we have amended the model and added clarification in a number of places. We are now asking consortium partners to provide applicant data to the Research Team by the **31 October 2014**.

Data should be provided in a standard format (e.g. tab delimited file). Data will be deposited with the York Research Team via a secure drop box facility.

Population definition:

The populations are:

2013/14 application cycle

all applications submitted for entry to postgraduate taught programmes in academic year 2014/15 (i.e. 2014 entrants). This is defined as applicants who applied on or after 01/09/2013, to **enter in the autumn 2014** enrolment period (which we assume to be September 2014 for the six consortium institutions).

2012/13 application cycle

all applications submitted for entry to postgraduate taught programmes in academic year 2013/14 (i.e. 2013 entrants). This is defined as applicants who applied on or after 01/09/2012, to **enter in the autumn 2013** enrolment period (which we assume to be September 2013 for the six consortium institutions).

We wish to **exclude** from the population:

- Non-UK-domiciled students (i.e. all overseas fee payers, plus students who have home fee status but are ordinarily resident outside the UK)
- Integrated masters (these are undergraduate programmes)
- Research students (but please **include** MRes⁹ programmes)

⁹ HEFCE defines a research degrees as "a postgraduate programme comprising a research component (including a requirement to produce original work) which is larger than any accompanying taught component when measured by student effort." Thus PhDs are research degrees. Taught doctorates may not be (if the thesis is less than 50% of the assessment). Masters by research *are* research degrees. Taught degrees which are intended as preparation for a PhD (as part of a 1+3 route, for instance) are typically *not* research degrees since the taught component is larger than the dissertation.

Applications vs. applicants

One person (applicant) can apply for many courses (applications). For this reason, we need each applicant to be allocated an identifier number (this can be in any reasonable format, but should not be their *actual* identifier number in your student record system). Applicants who have applied for more than one course should have a separate record for each application. In the table below we have separated out applicant and application data. We will use the identifier number to link multiple applications by a single applicant.

Linked data

Items in the table in Courier font indicate those which we anticipate could only be provided via record linkage where an applicant has previously studied at the institution applied to as an undergraduate. We expect that these items would not be captured as part of the usual postgraduate application process.

Some institutions will be able to identify all or most previous students (say since 2004). Others may need to do a manual linking exercise by checking through specific academic years. In the latter case, the ideal would be to check back over the previous ten years. However we recognise that for some institutions this could be a very time-intensive task. If this is the case, then checking the previous three years would capture around two-thirds of those who will go on to postgraduate study.

Paul Wakeling (on behalf of the UtS strand)
September 2014

APPLICANT details

Field	Values	Comments
Gender	<ul style="list-style-type: none">• Male• Female	
Year of birth	YYYY	
Disability status	<ul style="list-style-type: none">• Yes• No• Refused	
Correspondence postcode		The Research Team will derive POLAR3 and a regional measure from postcode data.
Nationality	Please provide using HESA categories if possible	If it is not possible to provide using HESA categories, please provide in the format you do have, accompanied with a note of values and their name
Highest qualification year	YYYY	Please provide if available (and if not, please indicate this when returning data).
Type of secondary school attended	<ul style="list-style-type: none">• State• Independent• Other	Please provide where possible. It is recognised that this is likely to be available principally only for postgraduate applicants who were previously undergraduates in the same institution
Socio-economic background (based on that of household at age 18 using both occupation and postcode – sourced from UG record if possible)	Using NS-SEC category (1-8) or SOC code (if held) AND/OR POLAR category	Please provide where possible. It is recognised that this is likely to be available principally only for postgraduate applicants who were previously undergraduates in the same institution

Field	Values	Comments
Institutional WP indicators (school compacts etc)	<ul style="list-style-type: none"> • WP student • Non-WP student 	Please provide where possible. It is recognised that this is likely to be available principally only for postgraduate applicants who were previously undergraduates in the same institution. Please also provide an explanatory note detailing the meaning of codes used.
Highest qualification level	Preferably using HESA categories for COURSEAIM	Following the consultation exercise, we are no longer asking institutions to provide this field.

APPLICATION details

Field	Values	Comments
Date application submitted	DD/MM/YYYY	
Mode of study applied to	<ul style="list-style-type: none">• Full time• Part-time• Distance learning	
Course title		
Subject area	Using JACS group 18 categories	
Qualification type	<ul style="list-style-type: none">• Professional doctorates (e.g. EngD, DNursSci, VetMD, EdD, DBA, DClinPsy)• Masters degrees (taught e.g. MA, MSc)• Research preparation masters (MRes)• Masters of Business Administration (MBA)• Postgraduate diploma• Postgraduate certificate• Other	Please advise if this data is held in a different format (e.g. course level may be identified only in course title)
Was an offer made?	<ul style="list-style-type: none">• Yes• No	
Was an application to the PSS scheme made for this programme	<ul style="list-style-type: none">• Yes• No	Institutions have indicated that they will need to be derived through linking to separately-held PSS application records

Field	Values	Comments
Did the applicant enrol?	<ul style="list-style-type: none"> • Yes • No 	This is likely to require data linkage to enrolment records.
Funding source	<ul style="list-style-type: none"> • Self • PSS award • Other sponsor • Mixture 	<p>This is likely to require data linkage to enrolment records.</p> <p>Data about PSS awards made will be held outside of the main application system for most institutions, requiring data linkage.</p>