



UNIVERSITY OF LEEDS

This is a repository copy of *Identification of an HIV-1 mutation in spacer peptide 1 that stabilizes the immature CA-SP1 lattice*.

White Rose Research Online URL for this paper:  
<http://eprints.whiterose.ac.uk/102078/>

Version: Supplemental Material

---

**Article:**

Fontana, J, Keller, PW, Urano, E et al. (3 more authors) (2016) Identification of an HIV-1 mutation in spacer peptide 1 that stabilizes the immature CA-SP1 lattice. *Journal of Virology*, 90 (2). pp. 972-978. ISSN 0022-538X

<https://doi.org/10.1128/JVI.02204-15>

---

© 2015, American Society for Microbiology. This is an author produced version of a paper published in *Journal of Virology*. Uploaded in accordance with the publisher's self-archiving policy.

**Reuse**

Unless indicated otherwise, fulltext items are protected by copyright with all rights reserved. The copyright exception in section 29 of the Copyright, Designs and Patents Act 1988 allows the making of a single copy solely for the purpose of non-commercial research or private study within the limits of fair dealing. The publisher or other rights-holder may allow further reproduction and re-use of this version - refer to the White Rose Research Online record for this item. Where records identify the publisher as the copyright holder, users can verify any specific terms of use on the publisher's website.

**Takedown**

If you consider content in White Rose Research Online to be in breach of UK law, please notify us by emailing [eprints@whiterose.ac.uk](mailto:eprints@whiterose.ac.uk) including the URL of the record and the reason for the withdrawal request.



[eprints@whiterose.ac.uk](mailto:eprints@whiterose.ac.uk)  
<https://eprints.whiterose.ac.uk/>

Fig. 1

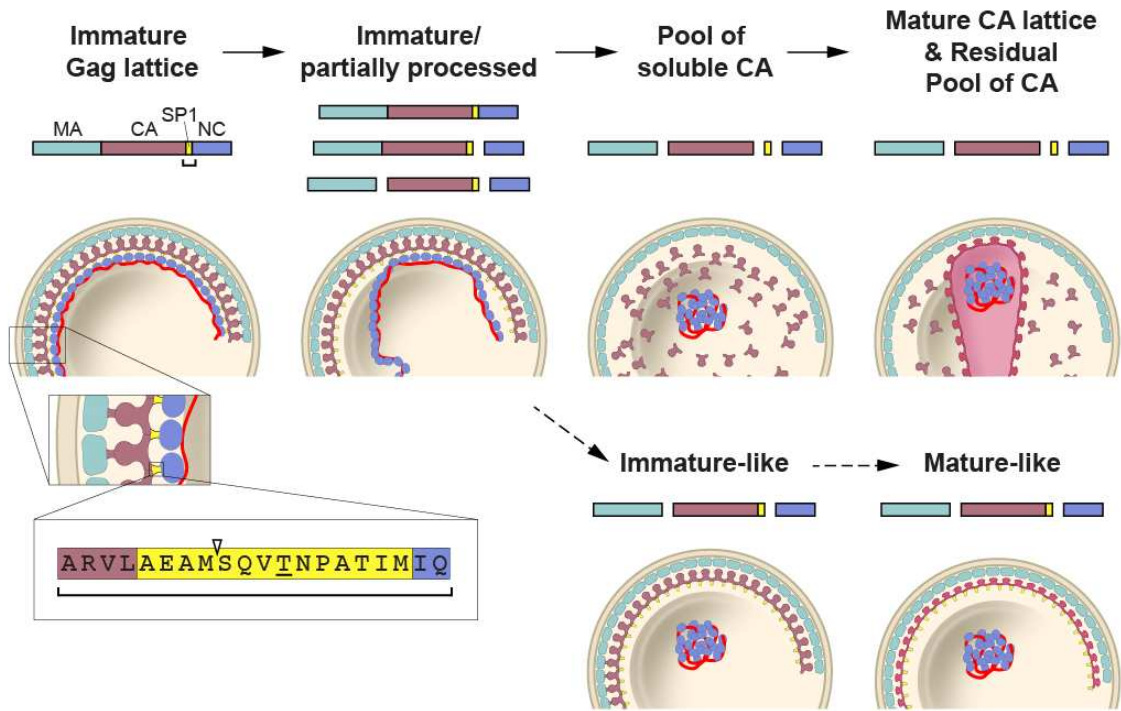


Fig. 2

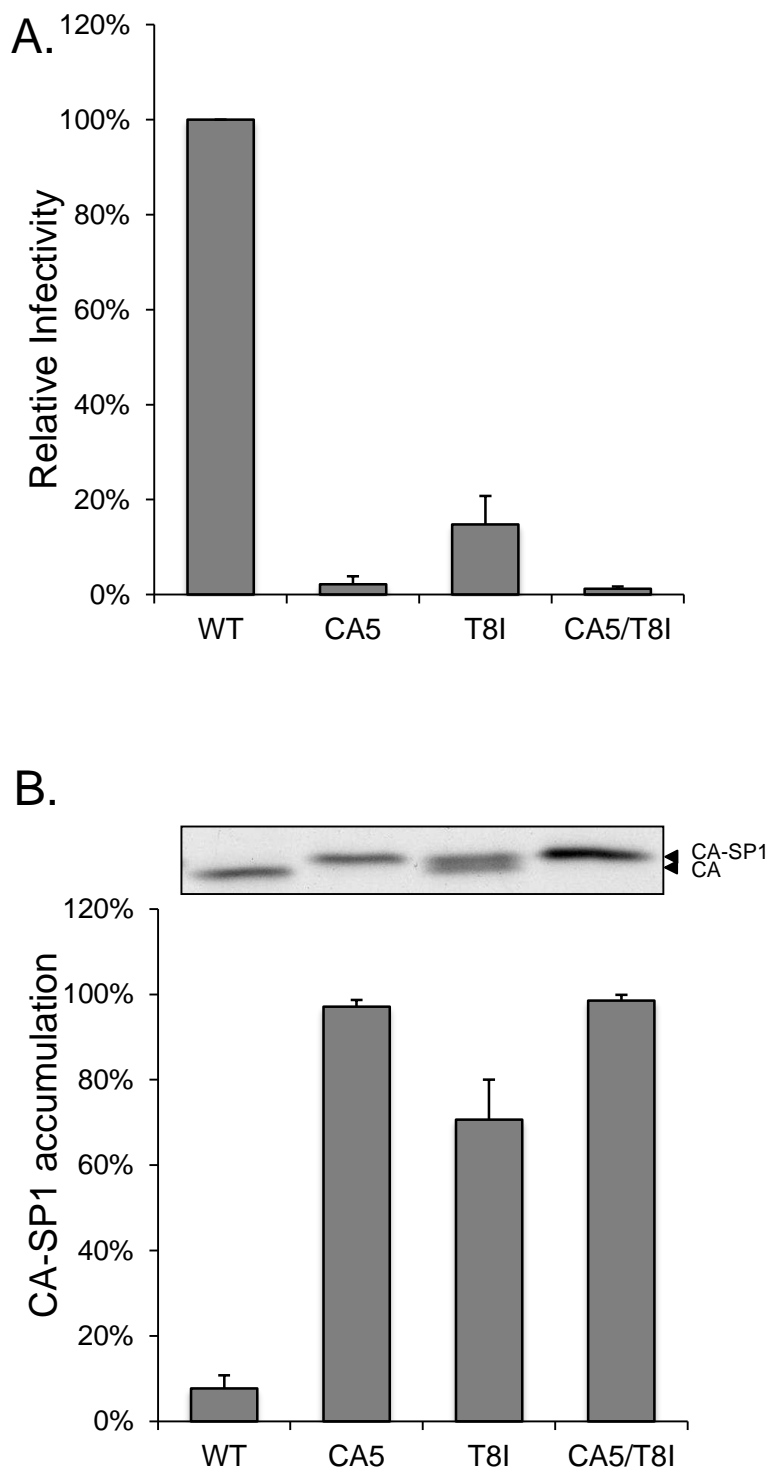
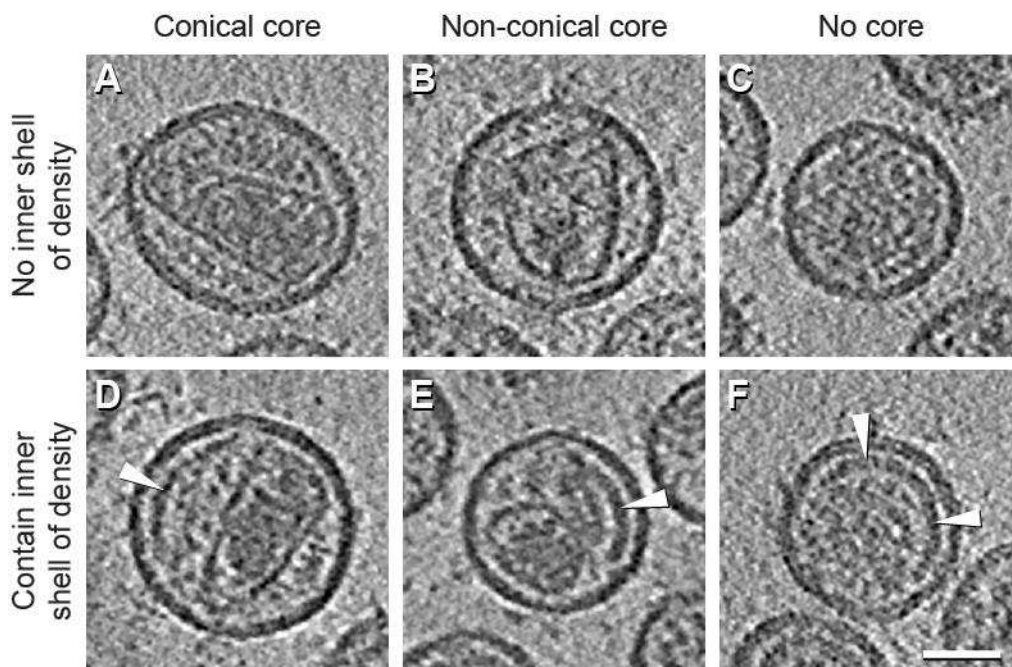


Fig. 3



### G. Morphological quantitation of HIV samples

	Conical core		Non-conical core <sup>1</sup>		No core		Immature
	No inner shell <sup>2</sup>	Contain inner shell <sup>2</sup>	No inner shell <sup>2</sup>	Contain inner shell <sup>2</sup>	No inner shell <sup>2</sup>	Contain inner shell <sup>2</sup>	
WT (n=100)	80	0	16	0	3	0	1
T8I (n=214)	24	7	30	9	12	16	2
CA5 (n=111)	0	0	6	0	10	82	2
CA5-T8I (n=178)	0	0	0	0	1	98	1

<sup>1</sup> Virions with irregular, cylindrical, polyhedral, double-layered or incomplete cores; or with two cores.

<sup>2</sup> Refers to a partial shell of density located underneath the viral envelope.

Fig. 4

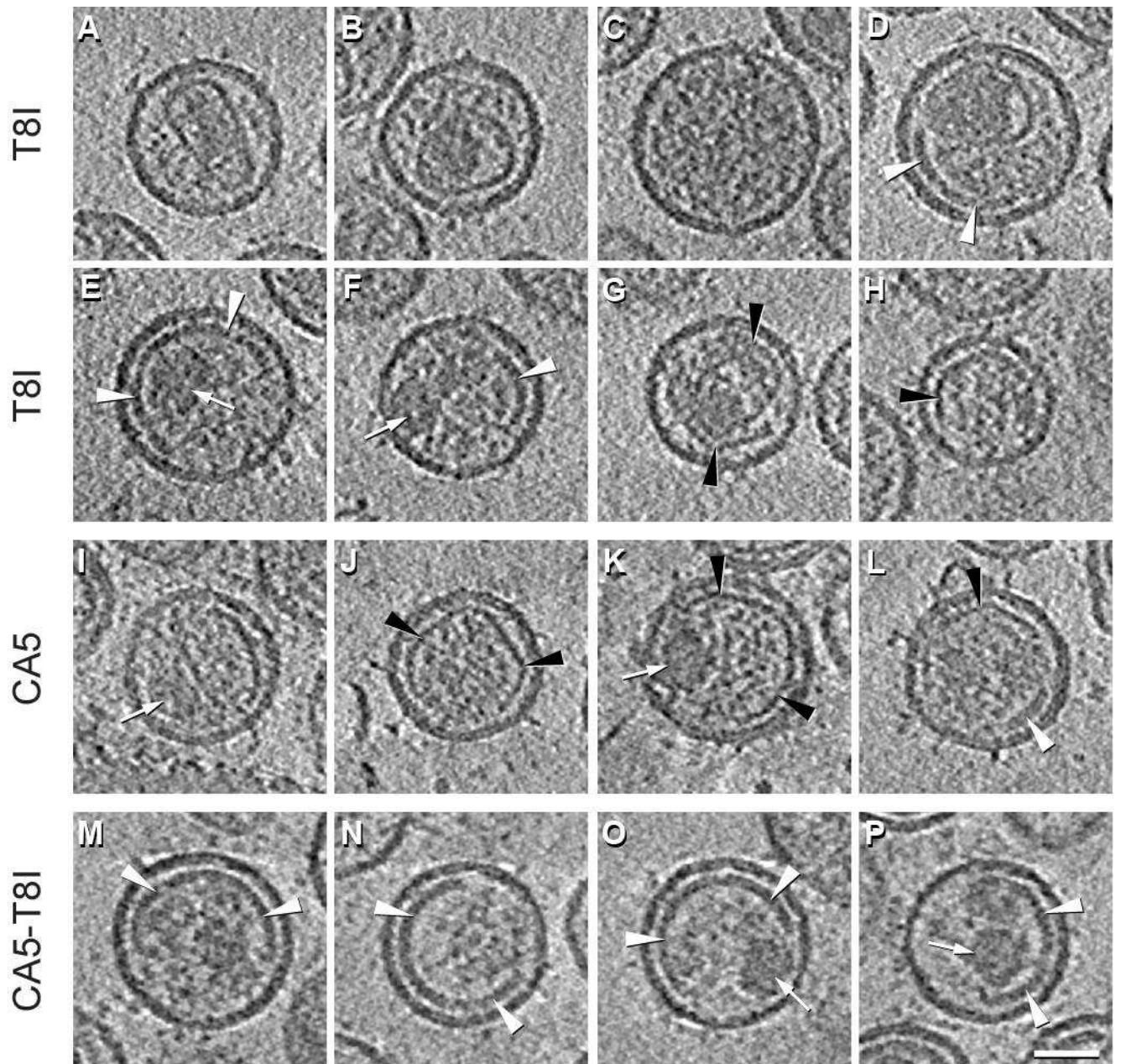


Fig. 5

