



Deposited via The University of Sheffield.

White Rose Research Online URL for this paper:

<https://eprints.whiterose.ac.uk/id/eprint/100254/>

Version: Accepted Version

Proceedings Paper:

Zhong, Q. and Konstantopoulos, G. (2016) Nonlinear Current-Limiting Control for Grid-tied Inverters. In: Proceedings of the 2016 American Control Conference (ACC). 2016 American Control Conference, July 6–8 2016, Boston , MA, USA. IEEE, pp. 7472-7477. ISBN: 978-1-4673-8682-1.

<https://doi.org/10.1109/ACC.2016.7526853>

© 2016 IEEE. Personal use of this material is permitted. Permission from IEEE must be obtained for all other users, including reprinting/ republishing this material for advertising or promotional purposes, creating new collective works for resale or redistribution to servers or lists, or reuse of any copyrighted components of this work in other works

Reuse

Items deposited in White Rose Research Online are protected by copyright, with all rights reserved unless indicated otherwise. They may be downloaded and/or printed for private study, or other acts as permitted by national copyright laws. The publisher or other rights holders may allow further reproduction and re-use of the full text version. This is indicated by the licence information on the White Rose Research Online record for the item.

Takedown

If you consider content in White Rose Research Online to be in breach of UK law, please notify us by emailing eprints@whiterose.ac.uk including the URL of the record and the reason for the withdrawal request.

Nonlinear Current-Limiting Control for Grid-tied Inverters

Qing-Chang Zhong and George C. Konstantopoulos

Abstract—A current-limiting controller with nonlinear dynamics is proposed in this paper for single-phase grid-tied inverters. The inverter is connected to the grid through an *LCL* filter and it is proven that the proposed controller can achieve accurate real and reactive power regulation. By suitably selecting the controller parameters, it is shown by using the nonlinear input-to-state stability theory that the inverter current remains below a given value at all times. This is achieved without external limiters, additional switches or monitoring devices and the controller remains a continuous-time system guaranteeing the boundedness of the system states. Guidelines for selecting the controller parameters are also given to provide a complete controller design procedure. Simulation results of a single-phase grid-tied inverter are presented to verify the desired power regulation of the proposed controller and its current-limiting capability.

I. INTRODUCTION

The large-scale integration of renewable energy sources to the power network during the last decades has started to affect the stable operation of the grid. This has created essential requirements for the grid-connected units to maintain the stability of the network. Since an inverter is usually required to integrate the renewable energy sources to the grid, several controllers have been proposed in the literature for grid-tied inverters to achieve accurate real and reactive power regulation [1], [2], [3]. Although in most of the times, unity power factor is obtained, modern power networks require a flexibility in controlling the reactive power of the inverter as well [1], [2], [4], [5].

Nevertheless, the stability properties of most of the existing controllers for grid-tied inverters have not been adequately exploited. The main reason is the increased complexity of the closed-loop system due to the nonlinear dynamics resulting from the calculation of the real and the reactive power. Most of the existing approaches use small-signal modeling of the system and linearization methods [6], [7], [8], while recently, nonlinear analysis has been conducted in order to strengthen the stability theory [9], [10], [11]. However, several assumptions are usually considered, such as a purely inductive network or constant load and line impedances, while the inner voltage and current control loops are often neglected [12].

The financial support from the EPSRC, U.K. under Grant No. EP/J01558X/1 is greatly appreciated.

Q.-C. Zhong is with the Department of Electrical and Computer Engineering, Illinois Institute of Technology, Chicago, IL 60616, USA, and the Department of Automatic Control and Systems Engineering, The University of Sheffield, Sheffield S1 3JD, U.K.. zhongqc@ieee.org

G. C. Konstantopoulos is with the Department of Automatic Control and Systems Engineering, The University of Sheffield, Sheffield S1 3JD, U.K. g.konstantopoulos@sheffield.ac.uk

Since in most of the cases, the grid is assumed to be stiff, i.e., with relatively constant voltage and frequency, the stability of the grid-tied inverter is directly related to the injected current, which should remain below a given value at all times. Although external limiters and saturation units can be added into the traditional control approaches to achieve the current-limiting property, these can lead to undesired oscillations and instability, due to the lack of a rigorous stability proof [13], [14]. Advanced nonlinear controllers, such as passivity-based or feedback linearization methods, can guarantee the asymptotic performance and the current-limitation, but their dependence on the system parameters and their complicated structure make them difficult to be implemented in practice [9], [15], [16], [17], [18], [19]. As a result, the proof of stability for grid-tied inverters operating with an inherent current-limiting property and independently from the system parameters, considering the nonlinear dynamic model of the system, represents a challenging task and is investigated in the current paper.

A nonlinear control strategy for single-phase grid-tied inverters is proposed in this paper to guarantee closed-loop system stability in the sense of boundedness and a given limit for the inverter current using the nonlinear dynamic model description. The inverter is assumed to be connected to the grid through an *LCL* filter, where the grid is assumed stiff or at least with bounded voltage and frequency close to their rated values. It is shown that the proposed controller can guarantee accurate real and reactive power regulation to the reference values. Particularly, a dynamic virtual resistance, which changes according to a nonlinear expression, and a phase shifting are designed and implemented based on the plant dynamics. Using nonlinear input-to-state stability theory, it is analytically proven that using a suitable controller parameter selection, a given limit for the inverter current can be guaranteed at all times, independently from the reference values of the real and the reactive power. This also leads to the proof of stability in the sense of boundedness for the inverter current, the grid current and the output capacitor voltage. In this way, the main tasks are achieved with an additional mathematical analysis that limits the inverter current below a given value, thus protecting the inverter and the filter at all times. The significant difference between the proposed controller and the existing virtual impedance methods is that the dynamic form of the controller is embedded into the virtual resistance and no additional voltage signals are added in the control design for the real power regulation that further complicate the closed-loop system analysis. Additionally, no external limiters or monitoring systems are required for limiting the inverter current, with the current-limiting being

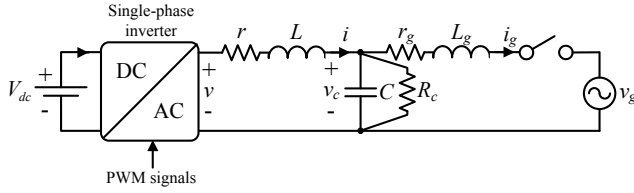


Fig. 1. Grid-tied inverter with LCL filter

an inherent property of the proposed controller, as it is proven for the nonlinear closed-loop system. To complete the design procedure, a guidance for selecting the controller parameters is also presented. Extensive simulation results are provided to verify the current-limiting property of the proposed controller as well as its performance for several changes of the reference values.

The rest of the paper is organized as follows. In Section II, the dynamic model of the grid-tied inverter is presented and the main problem addressed in the present paper is formulated. In Section III, the nonlinear current-limiting controller is proposed and analyzed. The current-limiting property is proven and a framework for selecting the controller parameters is also presented. In Section IV, simulation results are provided for a grid-tied inverter under the proposed controller, while in Section V, some conclusions are drawn.

II. DYNAMIC MODELING AND PROBLEM FORMULATION

The system under consideration is a single-phase inverter connected to the grid via an LCL filter as shown in Fig. 1. The LCL filter consists of the inductances L and L_g with small parasitic resistances in series r and r_g , respectively, and a capacitor C with a large parasitic resistance R_c in parallel. The inverter output voltage and current are denoted as v and i , respectively, v_c is the capacitor voltage and v_g and i_g are the grid voltage and current, respectively. Here, the grid is considered stiff and as a result $v_g = \sqrt{2}V_g \sin \omega_g t$, where V_g is the root-mean-square (RMS) grid voltage and ω_g is the grid angular frequency, although these can vary slightly from their rated values.

The dynamic model of the system is given by the following equations:

$$\begin{aligned} L \frac{di}{dt} &= -ri + v - v_c \\ C \frac{dv_c}{dt} &= i - \frac{v_c}{R_c} - i_g \\ L_g \frac{di_g}{dt} &= v_c - r_g i_g - v_g, \end{aligned} \quad (1)$$

which is obviously linear with state vector $x = [i \ v_c \ i_g]^T$ and control input the inverter voltage v , while v_g represents an uncontrolled external input.

For grid-tied inverters, the main task is to design a controller that achieves accurate real and reactive power regulation to some reference values P_{set} and Q_{set} , respectively. The measured real and the reactive powers P and Q are usually obtained at the capacitor node as the average values

of the instantaneous power expressions over a period T , which for a single-phase inverter become:

$$P = \frac{1}{T} \int_t^{t+T} v_c(\tau) i(\tau) d\tau, \quad (2)$$

$$Q = \frac{1}{T} \int_t^{t+T} v_{cq}(\tau) i(\tau) d\tau, \quad (3)$$

where v_{cq} is the capacitor voltage delayed by $\frac{\pi}{2}$ rad. It is obvious that the power expressions are nonlinear due to the multiplication of the system states, resulting in a nonlinear closed-loop system that is difficult to analyze in terms of stability. This is the main reason why most of the existing methods investigate the linearized model (small-signal) [6], [7], [8]. Therefore, for a solid theory, stability analysis should be conducted on the nonlinear system. The most challenging issue in grid-tied inverter stability is the limitation of the injected current below a given value. This is crucial for the stable and reliable operation of the system, since it should be proven at all times, i.e., during transients or changes of the system parameters, to avoid damage of the inverter and further instabilities at the power network.

The purpose of the proposed paper is to develop a nonlinear control scheme that acts independently from the system parameters, achieves the desired power regulation and guarantees a given limit for the inverter current based on the nonlinear dynamic model of the closed-loop system.

III. THE PROPOSED CURRENT-LIMITING CONTROLLER

A. Characteristics of the controller

In order to achieve the required performance with an inherent current-limiting function, the following controller is proposed

$$v = v_c + (1 - w_q)(v_g \cos \delta + v_{gq} \sin \delta - wi), \quad (4)$$

where $v_{gq} = \sqrt{2}V_g \cos \omega_g t$ and the variables w , w_q and δ represent the controller states with dynamics:

$$\dot{w} = -c_w (P_{set} - P) w_q^2 \quad (5)$$

$$\dot{w}_q = \frac{c_w (w - w_m) w_q}{\Delta w_m^2} (P_{set} - P) - k_w \left(\frac{(w - w_m)^2}{\Delta w_m^2} + w_q^2 - 1 \right) w_q \quad (6)$$

$$\dot{\delta} = -c_\delta (Q_{set} - Q), \quad (7)$$

with c_w , c_δ , w_m , Δw_m and k_w being positive constants. The initial conditions of w , w_q and δ are defined as $w_0 = w_m$, $w_{q0} = 1$ and $\delta_0 = 0$, respectively. Note that v_{gq} can be obtained using a traditional PLL. The PLL dynamics are assumed much faster than the plant and the controller dynamics, which is a common assumption in the analysis of power converters [7], [12].

For system (5)-(6), by considering the Lyapunov function candidate

$$W = \frac{(w - w_m)^2}{\Delta w_m^2} + w_q^2, \quad (8)$$

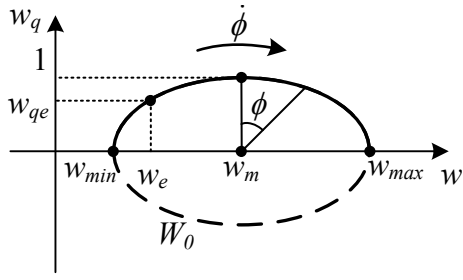


Fig. 2. Controller states w and w_q on the $w - w_q$ plane

its time derivative yields

$$\dot{W} = -2k_w \left(\frac{(w - w_m)^2}{\Delta w_m^2} + w_q^2 - 1 \right) w_q. \quad (9)$$

According to the initial conditions w_0 and w_{q0} , it results in

$$\dot{W} = 0, \quad \forall t \geq 0,$$

which means that

$$W(t) = W(0) = 1, \quad \forall t \geq 0.$$

This implies that both w and w_q start and stay on the ellipse

$$W_0 = \left\{ w, w_q \in \mathbb{R} : \frac{(w - w_m)^2}{\Delta w_m^2} + w_q^2 = 1 \right\},$$

at all times as shown in Fig. 2. By choosing $w_m > \Delta w_m > 0$, the ellipse is defined on the right-half plane resulting that $w \in [w_{min}, w_{max}] = [w_m - \Delta w_m, w_m + \Delta w_m] > 0$ for all $t \geq 0$. Now, using the transformation

$$\begin{aligned} w &= w_m + \Delta w_m \sin \phi \\ w_q &= \cos \phi, \end{aligned}$$

it gives

$$\dot{\phi} = \frac{-c_w (P_{set} - P) w_q}{\Delta w_m}, \quad (10)$$

which means that the states w and w_q will travel on the ellipse W_0 with angular velocity $\dot{\phi}$. This indicates that when $P = P_{set}$, then $\dot{\phi} = 0$ and both w and w_q can converge to some constant values w_e and w_{qe} , respectively, corresponding to the desired equilibrium point.

It should be underlined that by starting from point $(w_m, 1)$ on the $w - w_q$ plane, the controller states w and w_q will be restricted only on the upper semi-ellipse of W_0 . This is due to the fact that the angular velocity $\dot{\phi}$ depends on w_q from (10) and if the states try to reach the horizontal axis, then $w_q \rightarrow 0$ and $\dot{\phi} \rightarrow 0$ independently from the difference $P_{set} - P$. This will make the controller states slow down and remain on the upper semi-ellipse of W_0 , avoiding a limit cycle behavior resulting from the controller dynamics, which would lead to a continuous oscillation around W_0 . Therefore, it is reasonable to state that $w_q \in [0, 1]$ for all $t \geq 0$.

Additionally, the proposed controller introduces an integral structure in (7) to achieve the desired reactive power regulation. Particularly, δ corresponds to the desired phase shifting at the inverter voltage as it is better explained in the analysis that follows.

B. Stability of the closed-loop system

Since $v_g = \sqrt{2}V_g \sin \omega_g t$, then taking into account the trigonometric identities the proposed controller (4) becomes

$$v = v_c + (1 - w_q)(\sqrt{2}V_g \sin(\omega_g t + \delta) - wi), \quad (11)$$

which shows that the controller state δ introduces a necessary phase shifting to the inverter voltage. By applying the proposed controller (11) to the original plant dynamics (1), the inverter current equation results in

$$L \frac{di}{dt} = -(r + (1 - w_q)w) i + (1 - w_q)\sqrt{2}V_g \sin(\omega_g t + \delta). \quad (12)$$

From the previous controller analysis, it holds true that $w \in [w_{min}, w_{max}] > 0$ and $w_q \in [0, 1]$ for all $t \geq 0$. Dynamic equation (12) dictates that the proposed controller introduces a dynamic virtual resistance at the output of the inverter given by the term $(1 - w_q)w$, which changes according to the nonlinear expressions (5)-(6).

For system (12), consider the Lyapunov function candidate

$$V = \frac{1}{2} L i^2. \quad (13)$$

Its time derivative results in

$$\begin{aligned} \dot{V} &= -(r + (1 - w_q)w) i^2 + (1 - w_q)\sqrt{2}V_g i \sin(\omega_g t + \delta) \\ &\leq -(r + (1 - w_q)w_{min}) i^2 + (1 - w_q)\sqrt{2}V_g |i| |\sin(\omega_g t + \delta)|. \end{aligned}$$

This shows that $\dot{V} < 0$ when $|i| > \frac{(1 - w_q)\sqrt{2}V_g |\sin(\omega_g t + \delta)|}{r + (1 - w_q)w_{min}}$, proving that (12) is input-to-state stable (ISS) [20]. Since $(1 - w_q)\sqrt{2}V_g \sin(\omega_g t + \delta)$ is bounded, then the inverter current i is bounded for all $t \geq 0$. According to the ISS property, it holds true that

$$|i| \leq \frac{(1 - w_q)\sqrt{2}V_g}{r + (1 - w_q)w_{min}}, \quad \forall t \geq 0,$$

if initially $i(0)$ satisfies the previous inequality. By choosing

$$w_{min} = \frac{V_g}{I_{max}} \quad (14)$$

then

$$\begin{aligned} |i| &< \frac{(1 - w_q)}{r \frac{I_{max}}{V_g} + (1 - w_q)} \sqrt{2} I_{max} \\ &< \sqrt{2} I_{max}, \end{aligned}$$

since $(1 - w_q) \geq 0$ and $r \frac{I_{max}}{V_g} > 0$. The previous inequality holds for any $t \geq 0$ and for any constant positive I_{max} , and as a result

$$I < I_{max}, \quad \forall t \geq 0,$$

where I is the RMS value of the inverter current, proving that the proposed controller introduces an inherent current-limiting property independently from required power regulation, the nonlinear expressions of P , Q and the dynamics of δ . This is a crucial property since the inverter is protected at all times by limiting the output current, even during transients or if a large reference value P_{set} is applied.

In order to investigate the stability in the sense of boundedness of the rest of the plant states, the dynamics of the

capacitor voltage and grid current become from (1) in the following matrix form:

$$\begin{bmatrix} \frac{dv_c}{dt} \\ \frac{di_g}{dt} \end{bmatrix} = \begin{bmatrix} -\frac{1}{R_c C} & -\frac{1}{C} \\ \frac{1}{L_g} & -\frac{r_g}{L_g} \end{bmatrix} \begin{bmatrix} v_c \\ i_g \end{bmatrix} + \begin{bmatrix} \frac{i}{C} \\ -\frac{v_g}{L_g} \end{bmatrix}, \quad (15)$$

which can be seen as a linear time-invariant system of the form

$$\dot{x} = Ax + u$$

with state $x = [v_c \ i_g]^T$ and input $u = [\frac{i}{C} \ -\frac{v_g}{L_g}]^T$. By choosing

$$P = \begin{bmatrix} C & 0 \\ 0 & L_g \end{bmatrix} > 0$$

it is proven that

$$PA + A^T P = \begin{bmatrix} -\frac{2}{R_c} & 0 \\ 0 & -2r_g \end{bmatrix} < 0$$

which proves that A is Hurwitz and (15) is a bounded-input bounded-state system. Since $v_g = \sqrt{2}V_g \sin \omega_g t$ is bounded and i is bounded from the ISS and the current-limiting properties, then both the capacitor voltage v_c and the grid current i_g are proven to remain bounded at all times.

C. Parameters design

As explained in the previous subsection, the term $(1 - w_q)w$ represents a dynamic virtual resistance at the output of the inverter. Since the ISS analysis and the current-limiting property dictate that w_{min} is selected from (14) corresponding to maximum current I_{max} , then w_{max} will correspond to a minimum current I_{min} as

$$w_{max} = \frac{V_g}{I_{min}}. \quad (16)$$

Note that even when the inverter is not connected to the grid, a small current flows through the LC filter and then I_{min} can be chosen as relatively small corresponding to this small current. This will lead to the calculation of w_m and Δw_m as

$$w_m = \frac{V_g}{2} \left(\frac{1}{I_{min}} + \frac{1}{I_{max}} \right) \quad (17)$$

$$\Delta w_m = \frac{V_g}{2} \left(\frac{1}{I_{min}} - \frac{1}{I_{max}} \right), \quad (18)$$

from the definition of the ellipse W_0 .

Parameter k_w is an arbitrary positive constant since it is multiplied with the term $\frac{(w-w_m)^2}{\Delta w_m^2} + w_q^2 - 1$ in (6), which is zero on the ellipse W_0 . In fact, the role of the k_w is to increase the robustness of the w_q dynamics in an actual implementation due to calculation errors or external disturbances.

Parameters c_w and c_δ affect the dynamic performance of the controller. Particularly, c_w is found in the angular velocity (10) of the controller states w and w_q . Since w and w_q start from point $(w_m, 1)$, travel on the ellipse W_0 and they can reach the point $(w_{min}, 0)$ at the limit of the current after a settling time t_s , then consider a worst case scenario where the controller states travel on the arc of W_0 with central

TABLE I
SYSTEM AND CONTROLLER PARAMETERS

Parameters	Values	Parameters	Values
L, L_g	2.2 mH	ω_g	$2\pi \times 50$ rad/s
r, r_g	0.5 Ω	I_{max}	4 A
C	10 μ F	I_{min}	0.18 A
V_g	110 V	k_w	1000
S_n	500 VA	t_s	0.02 s

angle $\frac{\pi}{2}$ rad and with a maximum angular velocity $\frac{\pi}{2t_s}$ rad/s. This is a worst case scenario because the angular velocity will decrease as soon as P approaches P_{set} according to (10). In this framework, starting from zero real power P and setting the maximum real power $P_{set} = S_n$, where S_n is the rated power of the inverter, then by taking into account that $w_q \leq 1$ ($w_q = 1$ at the worst case), it yields from (10) that

$$\frac{\pi}{2t_s} = \frac{c_w S_n}{\Delta w_m}$$

which gives

$$c_w = \frac{\pi \Delta w_m}{2t_s S_n}. \quad (19)$$

Similarly, parameter c_δ affects the dynamics of δ from (7). As proven from (11), the angle δ is required for the shifting of the phase of the inverter voltage to achieve the required reactive power regulation. By neglecting the small phase shifting caused by the inductor L , and assuming a worst case scenario where Q starts from zero and reaches S_n after a settling time t_s , then this will correspond to a change of $\Delta\delta = \frac{\pi}{2}$. This operation can approximately give $\dot{\delta} \approx \frac{\Delta\delta}{t_s}$, and then from (7) it is

$$\frac{\pi}{2t_s} = c_\delta S_n$$

which gives

$$c_\delta = \frac{\pi}{2t_s S_n}. \quad (20)$$

It should be noted that both (19) and (20) represent a guidance for calculating c_w and c_δ , respectively, and have been obtained for a worst case scenario. In practice larger values can be chosen or equivalently smaller t_s can be used. This means that the values can be increased until a satisfactory response is achieved.

IV. SIMULATION RESULTS

For the verification of the proposed controller, a grid-tied single-phase inverter with an LCL filter is simulated using SimPower systems toolbox of Matlab/Simulink. The system and controller parameters are shown in Table I. A switching frequency of 15kHz is used for the pulse-width-modulation of the inverter and the sinusoidal tracking algorithm PLL is applied to obtain the required v_{gq} for the controller design [1]. The controller parameters c_w and c_δ are directly calculated from (19) and (20), respectively.

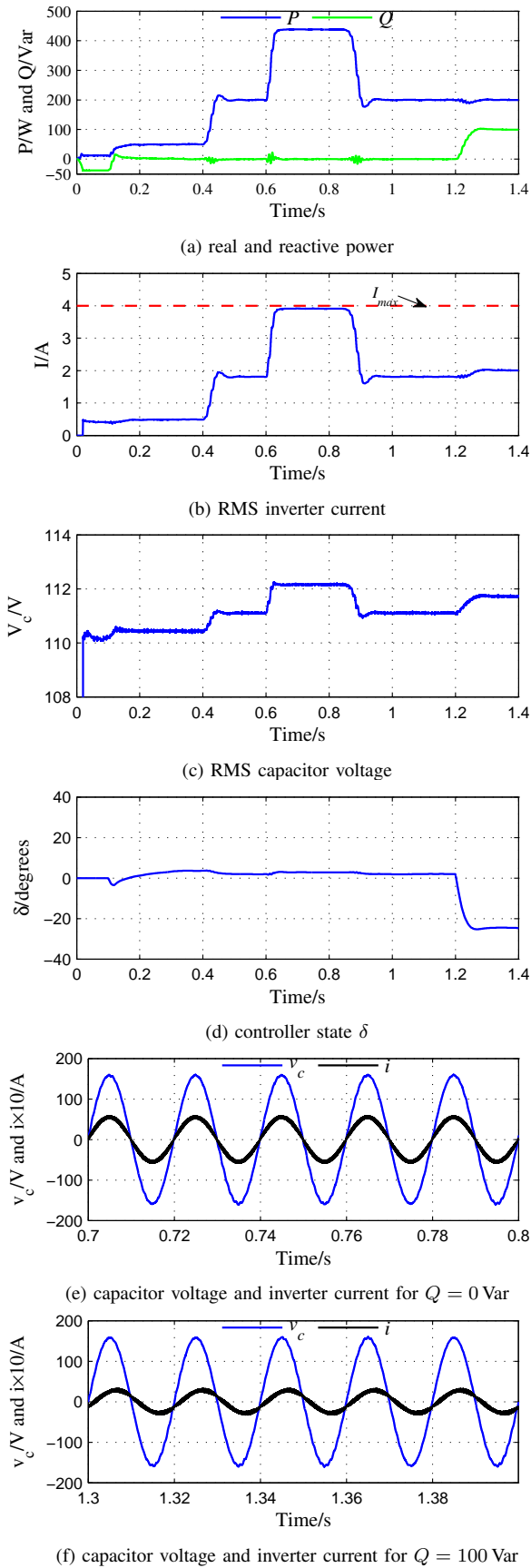
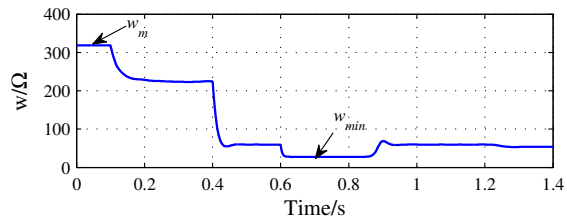


Fig. 3. Simulation results of the single-phase grid-tied inverter with the proposed current-limiting controller

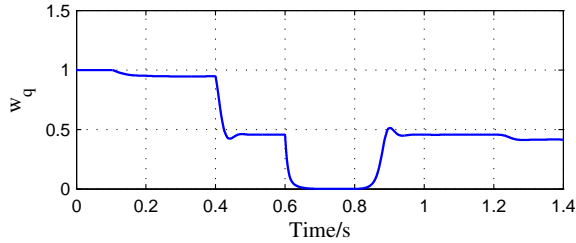
The system response is shown in Fig. 3. Initially the inverter is not connected to the grid and the inverter voltage v is set to v_g with a small negative reactive power being present due to the capacitance of the LCL filter (Fig. 3(a)). At the time instant $t = 0.1$ s, the inverter is connected to the grid and the controller is enabled with $P_{set} = 50$ W and $Q_{set} = 0$ Var resulting in a fast regulation of the real and the reactive power, as observed in Fig. 3(a). The time responses of the RMS values of the inverter current and the capacitor voltage are shown in Fig. 3(b) and (c), respectively. The controller state δ is shown in Fig. 3(d) which is regulated at a small positive constant in order to apply the necessary shifting for the inverter voltage angle to cancel the effect of the L inductor and achieve the required unity power factor. At $t = 0.4$ s, the reference real power becomes $P_{set} = 200$ W and the inverter is regulated at the desired value after a short transient. At $t = 0.6$ s, the reference power increases to $P_{set} = 600$ W that violates the technical limits of the inverter in order to verify the current-limiting property of the inverter. As it is illustrated in Fig. 3(a), the real power is regulated to a lower value because as it can be seen from 3(b), the inverter current tries to violate its maximum value. Therefore, the current-limiting property of the inverter is clearly depicted and the unity power factor is maintained, as it is also clear from the steady-state response of the capacitor voltage and the inverter current in Fig. 3(e). At $t = 0.8$ s, P_{set} changes back to 200 W and the system returns to its previous values. To verify the ability of the inverter to regulate the reactive power, at $t = 1.2$ s the reactive power reference is set to $Q_{set} = 100$ Var and the reactive power is quickly regulated to its desired value. This is also shown from the steady-state response in Fig. 3(f). All of these suitably prove the capability of the proposed controller achieve the main tasks with an inherent current limitation. Finally, the analysis presented in Section III is verified in Fig. 4, where the controller states w and w_q converge to the required steady-state values in Fig. 4(a) and 4(b), respectively, and it is observed that they operate exclusively on the desired upper semi-ellipse of W_0 (Fig. 4(c)).

V. CONCLUSIONS

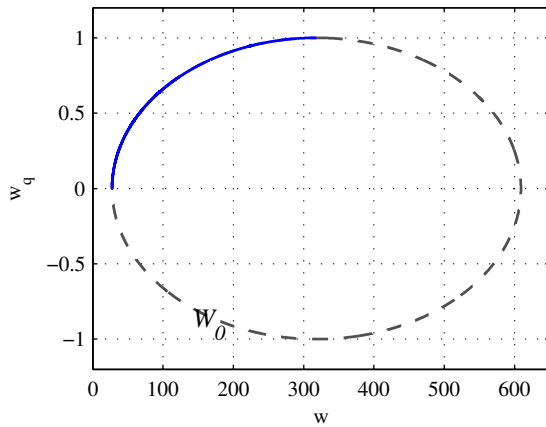
A nonlinear controller with a current-limiting property was proposed for single-phase grid-tied inverters with an LCL filter. The proposed controller can achieve the desired real and reactive power regulation with a guaranteed closed-loop stability in the sense of boundedness. Based on the nonlinear dynamics of the system and using input-to-state stability theory, a given limit for the inverter current is always proven independently from the power reference values. A guidance for selecting all the controller parameters was also presented to obtain the complete controller implementation procedure. The desired performance of the proposed current-limiting controller and the theoretical analysis were verified through extensive simulations.



(a) controller state w



(b) controller state w_q



(c) phase portrait on $w - w_q$ plane

Fig. 4. Controller states w and w_q

REFERENCES

[1] Q.-C. Zhong and T. Hornik, *Control of Power Inverters in Renewable Energy and Smart Grid Integration*. Wiley-IEEE Press, 2013.
 [2] Q.-C. Zhong and G. Weiss, "Synchronverters: Inverters That Mimic Synchronous Generators," *IEEE Trans. Ind. Electron.*, vol. 58, no. 4, pp. 1259–1267, 2011.
 [3] J. M. Guerrero, J. Matas, L. G. de Vicuna, M. Castilla, and J. Miret, "Decentralized control for parallel operation of distributed generation

inverters using resistive output impedance," *IEEE Trans. Ind. Electron.*, vol. 54, no. 2, pp. 994–1004, Nov. 2007.
 [4] Q.-C. Zhong, "Robust droop controller for accurate proportional load sharing among inverters operated in parallel," *IEEE Trans. Ind. Electron.*, vol. 60, no. 4, pp. 1281–1290, Apr. 2013.
 [5] M. Karimi-Ghartemani, "Universal integrated synchronization and control for single-phase dc/ac converters," *IEEE Trans. Power Electron.*, vol. 30, no. 3, pp. 1544–1557, Mar. 2015.
 [6] A. Yazdani and R. Iravani, *Voltage-Sourced Converters in Power Systems: Modeling, Control, and Applications*. John Wiley & Sons, Inc., 2010.
 [7] R. Majumder, "Some Aspects of Stability in Microgrids," *IEEE Trans. Power Syst.*, vol. 28, no. 3, pp. 3243–3252, 2013.
 [8] X. Tang, W. Deng, and Z. Qi, "Investigation of the Dynamic Stability of Microgrid," *IEEE Trans. Power Syst.*, vol. 29, no. 2, pp. 698–706, 2014.
 [9] T.-S. Lee, "Lagrangian modeling and passivity-based control of three-phase AC/DC voltage-source converters," *IEEE Transactions on Industrial Electronics*, vol. 51, no. 4, pp. 892–902, 2004.
 [10] A. Gensior, H. Sira-Ramírez, J. Rudolph, and H. Güldner, "On Some Nonlinear Current Controllers for Three-Phase Boost Rectifiers," *IEEE Trans. Ind. Electron.*, vol. 56, no. 2, pp. 360–370, 2009.
 [11] G. Konstantopoulos, Q.-C. Zhong, B. Ren, and M. Krstic, "Bounded droop controller for parallel operation of inverters," *Automatica*, vol. 53, pp. 320 – 328, 2015.
 [12] J. Schiffer, D. Zonetti, R. Ortega, A. Stankovic, T. Sezi, and J. Raisch, "Modeling of microgrids - from fundamental physics to phasors and voltage sources," 2015, submitted to *Automatica*.
 [13] A. D. Paquette and D. M. Divan, "Virtual Impedance Current Limiting for Inverters in Microgrids With Synchronous Generators," *IEEE Trans. Ind. Appl.*, vol. 51, no. 2, pp. 1630–1638, 2015.
 [14] N. Bottrell and T. C. Green, "Comparison of Current-Limiting Strategies During Fault Ride-Through of Inverters to Prevent Latch-Up and Wind-Up," *IEEE Trans. Power Electron.*, vol. 29, no. 7, pp. 3786–3797, 2014.
 [15] M. Pérez, R. Ortega, and J. R. Espinoza, "Passivity-based PI control of switched power converters," *IEEE Trans. Control Syst. Technol.*, vol. 12, no. 6, pp. 881–890, 2004.
 [16] D. del Puerto-Flores, J. M. A. Scherpen, M. Liserre, M. M. J. de Vries, M. J. Kransse, and V. Giuseppe Monopoli, "Passivity-Based Control by Series/Parallel Damping of Single-Phase PWM Voltage Source Converter," *IEEE Trans. Control Syst. Technol.*, vol. 22, no. 4, pp. 1310–1322, 2014.
 [17] J. R. Espinoza and G. Joos, "State variable decoupling and power flow control in PWM current-source rectifiers," *IEEE Trans. Ind. Electron.*, vol. 45, no. 1, pp. 78–87, 1998.
 [18] J. R. Espinoza, G. Joos, and L. Moran, "Decoupled control of the active and reactive power in three-phase PWM rectifiers based on non-linear control strategies," in *30th Annual IEEE Power Electronics Specialists Conference (PESC 99)*, vol. 1, 1999, pp. 131–136.
 [19] D.-C. Lee, "Advanced nonlinear control of three-phase PWM rectifiers," *IEE Proceedings-Electric Power Applications*, vol. 147, no. 5, pp. 361–366, 2000.
 [20] H. K. Khalil, *Nonlinear Systems*. Prentice Hall, 2001.