

Mechanisms of JAK/STAT pathway negative regulation by the short coreceptor Eye Transformer/Latran

Katherine H. Fisher^a, Wojciech Stec^{a,*}, Stephen Brown^b, and Martin P. Zeidler^a

^aBateson Centre and ^bSheffield RNAi Screening Facility, Department of Biomedical Science, University of Sheffield, Sheffield S10 2TN, United Kingdom

ABSTRACT Transmembrane receptors interact with extracellular ligands to transduce intracellular signaling cascades, modulate target gene expression, and regulate processes such as proliferation, apoptosis, differentiation, and homeostasis. As a consequence, aberrant signaling events often underlie human disease. Whereas the vertebrate JAK/STAT signaling cascade is transduced via multiple receptor combinations, the *Drosophila* pathway has only one full-length signaling receptor, Domeless (Dome), and a single negatively acting receptor, Eye Transformer/Latran (Et/Lat). Here we investigate the molecular mechanisms underlying Et/Lat activity. We demonstrate that Et/Lat negatively regulates the JAK/STAT pathway activity and can bind to Dome, thus reducing Dome:Dome homodimerization by creating signaling-incompetent Dome:Et/Lat heterodimers. Surprisingly, we find that Et/Lat is able to bind to both JAK and STAT92E but, despite the presence of putative cytokine-binding motifs, does not detectably interact with pathway ligands. We find that Et/Lat is trafficked through the endocytic machinery for lysosomal degradation but at a much slower rate than Dome, a difference that may enhance its ability to sequester Dome into signaling-incompetent complexes. Our data offer new insights into the molecular mechanism and regulation of Et/Lat in *Drosophila* that may inform our understanding of how short receptors function in other organisms.

Monitoring Editor

Jonathan Chernoff
Fox Chase Cancer Center

Received: Jul 31, 2015

Revised: Nov 30, 2015

Accepted: Dec 1, 2015

INTRODUCTION

The development of multicellular organisms requires individual cells to coordinate their behavior. Communication events are frequently initiated by secreted ligands, which bind to transmembrane receptors, triggering intracellular signaling cascades. In many cases, these signaling pathways alter target gene expression and modulate cellular behavior. The Janus kinase (JAK)/signal transducer and activa-

tor of transcription (STAT) pathway represents one such communication system. The pathway has been evolutionarily conserved and is essential for many developmental processes, including cellular proliferation, innate immune responses, and stem cell maintenance (Arbouzova and Zeidler, 2006; Bausek, 2013; Morin-Poulard *et al.*, 2013; Amoyel *et al.*, 2014). Furthermore, dysregulation of intercellular signaling is frequently associated with human diseases, including immune disorders and cancers (Teng *et al.*, 2014; Thomas *et al.*, 2015; Villarino *et al.*, 2015). Given the importance of appropriate pathway activation, multiple regulatory mechanisms act at many levels to tightly control both the strength and duration of activity (Arbouzova and Zeidler, 2006; Stec *et al.*, 2013).

In vertebrates, the JAK/STAT pathway transduces signaling of multiple transmembrane receptors, which can bind extracellular cytokines, including interleukins (ILs), growth factors, and interferons. Of these, the IL-6 family of vertebrate cytokine receptors, most similar to *Drosophila* Dome, can be broadly split into two categories: long β -receptors, such as GP130, LIFR β , and OSMR β , and shorter α -receptors, such as IL-6R α , IL-11R α , and IL-13R α 2 (Rahaman *et al.*, 2002; reviewed in Taga and Kishimoto, 1997; Heinrich *et al.*, 2003).

This article was published online ahead of print in MBoC in Press (<http://www.molbiolcell.org/cgi/doi/10.1091/mbc.E15-07-0546>) on December 10, 2015.

*Present address: Research and Development Unit, Celther Polska, 93-193 Lodz, Poland.

Address correspondence to: Martin P. Zeidler (m.zeidler@sheffield.ac.uk).

Abbreviations used: β -gal, β -galactosidase; CHX, cyclohexamide; ET, Eye Transformer; IL, interleukin; JAK, Janus kinase; Lat, Latran; STAT, signal transducer and activator of transcription.

© 2016 Fisher *et al.* This article is distributed by The American Society for Cell Biology under license from the author(s). Two months after publication it is available to the public under an Attribution–Noncommercial–Share Alike 3.0 Unported Creative Commons License (<http://creativecommons.org/licenses/by-nc-sa/3.0>).

"ASCB®," "The American Society for Cell Biology®," and "Molecular Biology of the Cell®" are registered trademarks of The American Society for Cell Biology.

Supplemental Material can be found at:
<http://www.molbiolcell.org/content/suppl/2015/12/07/mbc.E15-07-0546v1.DC1.html>

Associating with specific domains within the cytosolic tail of receptor complexes (Kaplan *et al.*, 1996; Taga and Kishimoto, 1997), four JAKs (JAK1–3 and TYK2) play a central role in the transduction of signaling via their tyrosine kinase activity. Phosphorylating themselves and their receptors in response to ligand binding, the JAKs generate sites to which cytosolic STATs are able to bind (Stahl *et al.*, 1995; Klingmüller *et al.*, 1996; May *et al.*, 1996). Once bound to the receptor complex, the STATs are tyrosine phosphorylated before translocating into the nucleus, where they bind DNA and modulate gene expression.

The *Drosophila* JAK/STAT cascade represents a highly conserved yet lower-complexity system in which to study JAK/STAT signaling. In the fly, only three ligands—Upd, Upd2, and Upd3 (Harrison *et al.*, 1998; Hombria *et al.*, 2005; Wright *et al.*, 2011)—one signaling receptor (Dome; Brown *et al.*, 2001), one JAK (Hopscotch [Hop]; Binari and Perrimon, 1994), and one STAT (STAT92E; Hou *et al.*, 1996; Yan *et al.*, 1996)—make up the complete core signaling cascade. Regulatory mechanisms mediated by factors such as SOCS36E (Stec *et al.*, 2013) and the tyrosine phosphatase PTP61F (Müller *et al.*, 2005) have also been conserved.

Originally identified on the basis of cytokine-binding motifs similar to those present in Dome (Hombria and Brown, 2002), the short receptor Eye Transformer (Et)/Latran (Lat) is located adjacent to the long Dome receptor in the genome and is likely to be the product of an evolutionarily recent duplication event. With a primary structure similar to that of vertebrate α -receptors (Hombria and Brown, 2002), Et/Lat was also identified in two studies that named the protein Eye Transformer (Kallio *et al.*, 2010) and Latran (Makki *et al.*, 2010), respectively, subsequently referred to in this study as Et/Lat. One study focused on the *in vivo* mutant phenotype of Et/Lat, which demonstrated a requirement in innate immune responses. On parasitic wasp infestation, Et/Lat is up-regulated, whereas Dome expression is down-regulated. This increase in the Et/Lat:Dome ratio reduces pathway activity and thus allows hemocyte precursors within the lymph gland to differentiate into lamellocytes, which in turn attempt to smother the wasp egg (Makki *et al.*, 2010). In the second study, Et/Lat was identified in a cell-based RNA interference (RNAi) screen as a negative regulator of JAK/STAT pathway reporter activity. It was shown to bind to Hop and Dome by immunoprecipitation, and this report suggested that Et/Lat does not affect Dome:Hop or Dome:Dome dimer formation (Kallio *et al.*, 2010).

Here we examine the mechanism of Et/Lat negative regulation. We find that Et/Lat is able to bind to Dome and block the formation of Dome homodimers. We further show that Et/Lat can bind to both JAK and STAT proteins to form a complex that is unable to bind to the pathway ligands and therefore unable to trigger the phosphorylation events necessary for signaling. We find that whereas Et/Lat can be degraded via the lysosome, the protein lasts over a much longer time frame than Dome. Therefore we suggest that Et/Lat is able to sequester JAK/STAT signaling components in an inactive but stable complex.

RESULTS AND DISCUSSION

Et/Lat disrupts formation of Dome:Dome dimers

Although it was previously shown that Et/Lat negatively regulates JAK/STAT signaling and binds to the Dome receptor complex, the molecular mechanism underlying this activity is not understood. We first set out to confirm that Et/Lat is indeed a negative regulator of JAK/STAT signaling, using an established STAT92E-responsive luciferase reporter in *Drosophila* Kc₁₆₇ cells (Müller *et al.*, 2005). Although increasing concentrations of cotransfected pathway ligand resulted in higher STAT92E activity, coexpression of additional

Dome had no effect on signaling. However, expression of Et/Lat-HA in these cells dramatically reduced signaling output in a dose-dependent manner (Figure 1A). Furthermore, expression of additional Dome was sufficient to at least partially relieve the Et/Lat-induced suppression (Figure 1A), findings that are similar to those of Makki *et al.* (2010). Consistent with a previous report (Kallio *et al.*, 2010), we found that Et/Lat physically associates with Dome, as shown by coimmunoprecipitation of tagged receptors expressed in cells (Figure 1B). Furthermore, we also found that Et/Lat can itself form homodimers (Figure 1B), although the relative affinity of these associations and their potential functional relevance is not clear.

To better understand the nature of receptor interactions, we tested the effect of Et/Lat on Dome:Dome homodimers. Using coimmunoprecipitation as an assay, we found that increasing levels of Et/Lat can reduce the Dome:Dome interaction (Figure 1C). To confirm the immunoprecipitation results, we also developed a cell-based molecular complementation assay, termed β Blue- β lau, previously used to report Dome dimerization *in vivo* (Brown *et al.*, 2003). In this assay, the *dome*-coding region is fused to two *LacZ* mutants termed $\Delta\alpha$ and $\Delta\omega$. These mutants each produce truncated, enzymatically inactive β -galactosidase (β -gal) proteins (Supplemental Figure S1). However, when brought into close enough proximity (e.g., via interaction of the proteins to which they are fused), they are able to complement one another and thus reconstitute a functional β -gal enzyme (Rossi *et al.*, 1997). We first expressed Dome- $\Delta\alpha$ and Dome- $\Delta\omega$ in Kc₁₆₇ cells before retransfecting them with increasing concentrations of Et/Lat-hemagglutinin (HA). Visualization of β -gal activity showed that higher levels of Et/Lat were able to reduce β -gal activity and complementation (Figure 1D). This suggests that either Dome:Dome dimer formation is reduced or dimer breakdown is enhanced by Et/Lat, with the approaches used here not able to differentiate between these mechanisms. To quantify this more accurately, we went on to use a substrate that is cleaved by β -gal to release luciferin. This luciferin acts as a substrate in a firefly luciferase reaction, giving a quantifiable measurement of β -gal activity (Hannah *et al.*, 2003). Despite higher levels of background associated with this assay, we found that the signal from Dome- $\Delta\alpha$:Dome- $\Delta\omega$ dimers was significantly reduced at the highest doses of both Et/Lat-HA and Dome-HA, with the latter as a positive control (Figure 1E).

Consistent with the reduction in Dome:Dome dimers observed, high doses of Et/Lat-HA were also sufficient to reduce significantly the expression of the STAT92E transcriptional target *socs36E* (Bina *et al.*, 2010; Figure 1F), whereas high Dome-HA levels were not. This indicates that whereas Et/Lat and Dome can both interact with a signaling-competent receptor complex, only Et/Lat has the ability to block downstream signaling.

Et/Lat can bind to intracellular JAK/STAT signaling components

To determine the mechanism underlying how Et/Lat negatively regulates JAK/STAT signaling, we set out to investigate whether Et/Lat could physically associate with other components of the JAK/STAT pathway. Examination of the protein sequence alignments between intracellular Dome and Et/Lat revealed the presence of a conserved potential Hop-binding site located at the same position relative to the transmembrane domain within both molecules (HBS in Figure 2A). This LP motif is similar to the ²⁶⁶LPKS sequence in interferon- γ receptor 1 previously shown to be required for binding to JAK1 (where P is the critical residue required for binding; Kaplan *et al.*, 1996). To test whether this site does indeed confer Hop binding, we mutated the proline at amino acid 925 (P925I). As expected, Dome

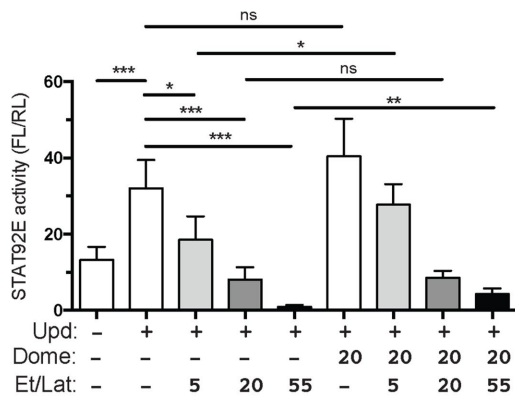
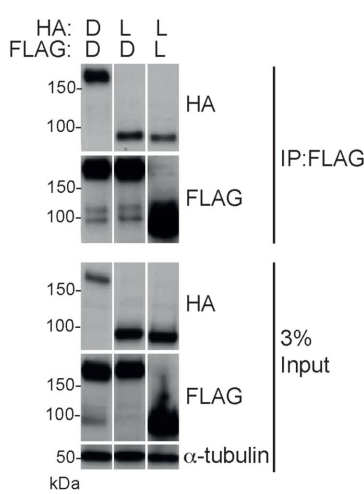
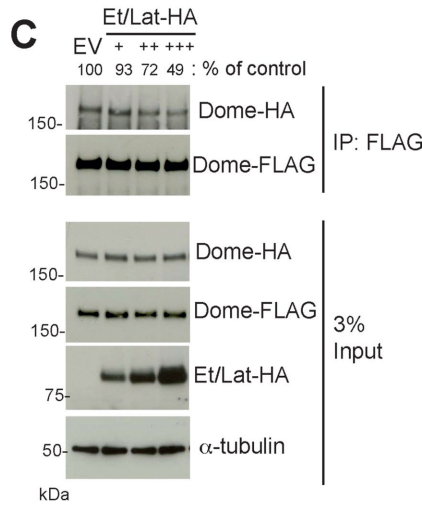
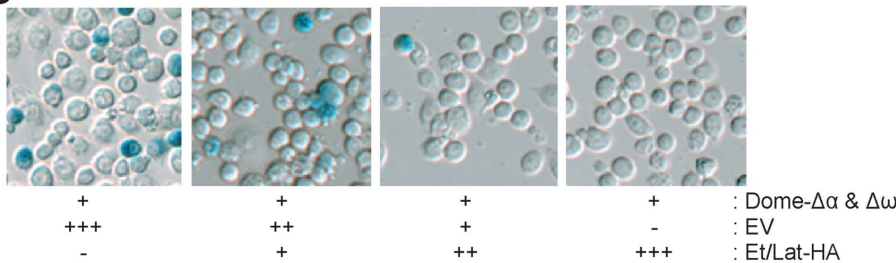
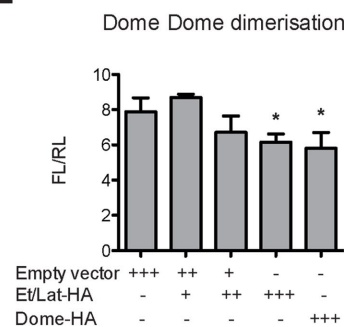
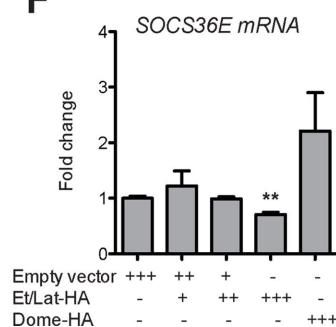
A**B****C****D****E****F**

FIGURE 1: Et/Lat can disrupt formation of Dome homodimers. (A) STAT92E transcriptional reporter activity assay. Pathway activity increases after the cotransfection of Upd ligand. Cotransfection of increasing quantities of Et/Lat blocks signaling capability in a dose-dependent manner. Expression of additional Dome does not significantly alter signaling (column 6) in the absence of Et/Lat but is sufficient to significantly increase signaling inhibited by Et/Lat

P925I showed very little binding to Hop even when coexpressed at high levels (Figure 2B). Furthermore, whereas tyrosine phosphorylation of wild-type Dome was increased after stimulation with Upd2-conditioned medium, the basal phosphorylation level of Dome P925I was lower and remained unchanged upon stimulation (Figure 2B). We went on to test the signaling activity of Dome P925I using a STAT92E-responsive reporter assay. We found that increasing the level of Dome did not affect the reporter activity compared with empty vector-transfected cells. (Figure 2C). However, expression of Dome P925I substantially reduced pathway activity, suggesting that Dome P925I is acting as a dominant-negative receptor, possibly via the formation of heterodimers with endogenous Dome (Figure 2C). Taken together, these data suggest that the LP motif within Dome is a Hop-binding site and also suggest that two Hop molecules are required to form a signaling receptor complex. Given that the sequence and the relative position of this site are conserved between Dome and Et/Lat (Figure 2A), we suggest that this site could also act as a binding site for Hop in Et/Lat. To test this

coexpression (compare column 3 to column 7 and column 5 to column 9). Numbers indicate relative levels of Dome- and Et/Lat-expressing plasmids transfected. (B) Coimmunoprecipitation assays using FLAG-tagged Dome (D) or Et/Lat (L) to pull down HA-tagged Dome or Et/Lat indicate that both Dome and Et/Lat can form both homodimers and heterodimers. Constructs transfected are indicated. α -Tubulin was used as a loading control. (C) Coimmunoprecipitation assays using Dome-FLAG to pull down Dome-HA from cells. Quantification of this blot is shown as percentage of control levels. Increasing the level of Et/Lat cotransfected into cells reduces the amount of Dome-HA that can be coimmunoprecipitated. EV, empty vector. (D) Cells transfected with the Dome- $\Delta\alpha$ and Dome- $\Delta\omega$ dimerization assay and stained with X-gal (blue) to visualize bimolecular complementation. Owing to transient transfection, not every cell expresses both constructs. Increasing amounts of Et/Lat retransfected into previously transfected cells progressively block Dome homodimerization. (E) Dome homodimerization as described in D but quantified using β -Glo reagent to measure β -galactosidase activity levels. (F) Quantitative PCR of the JAK/STAT pathway target gene *socs36E*. mRNA levels are reduced after increased expression of Et/Lat but not after increased Dome. The analysis used unpaired t tests with Welch's correction. * $p < 0.05$, ** $p < 0.01$, and *** $p < 0.001$. ns, not significant.

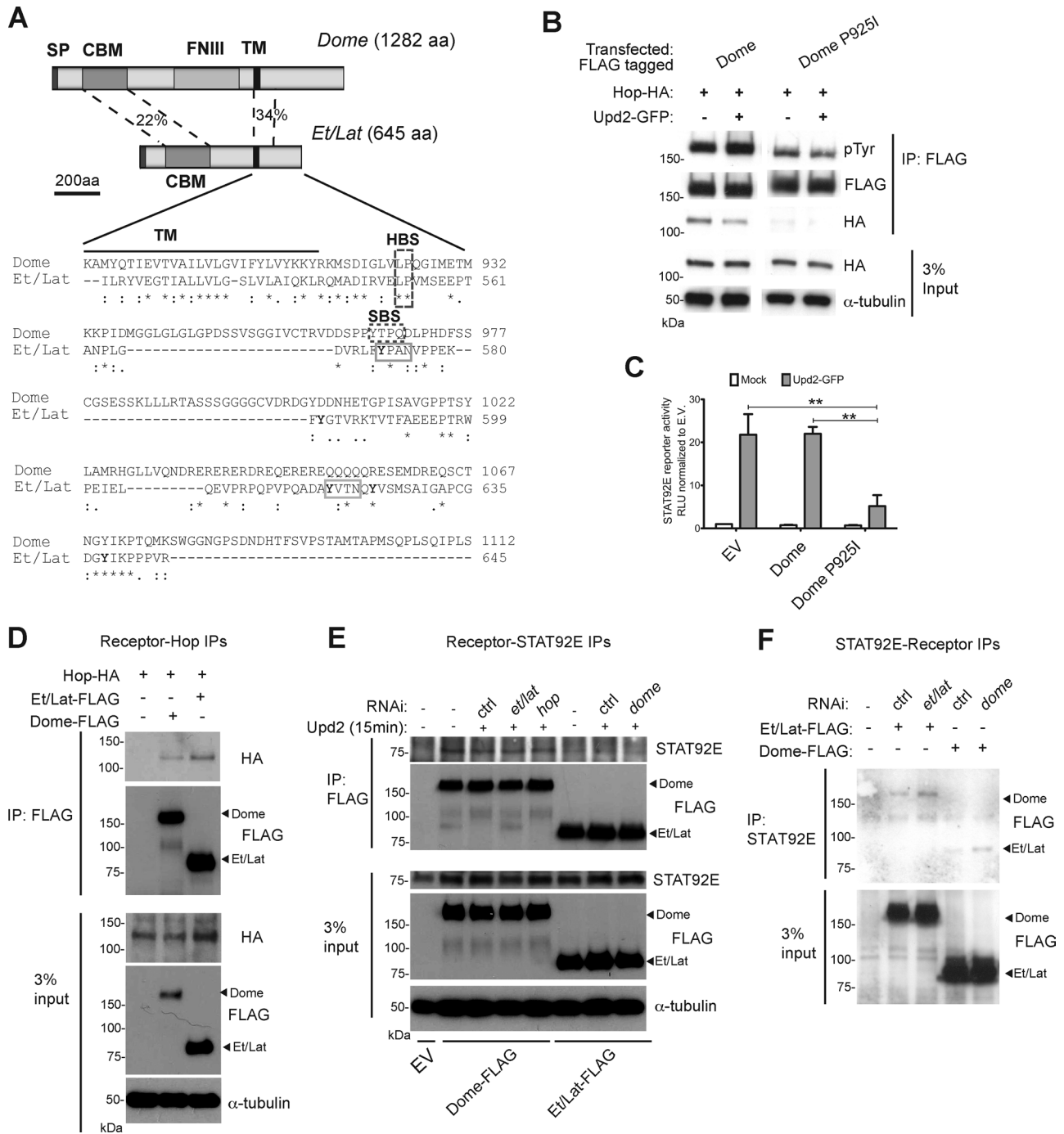


FIGURE 2: Et/Lat can bind to intracellular JAK/STAT components. (A) Visualization of Dome and Et/Lat protein domain structure. Clustal sequence alignment for intracellular portion of Dome and Et/Lat. Transmembrane domain (TM; black bar), putative binding sites for Hop (HBS), and STAT92E (SBS) are highlighted. Tyrosine residues in Et/Lat are shown with bold letters. SP, signal peptide; CBM, cytokine-binding motif; FNIII, fibronectin 3 domains; TM, transmembrane domain; HBS, Hop-binding site; SBS, STAT binding site; aa, amino acids). Percentage identity between the indicated domains. (B) Dome-FLAG can coimmunoprecipitate Hop-HA, but this is greatly reduced when the putative Hop-binding site is mutated (Dome P925I). Tyrosine phosphorylation (pTyr) of Dome is also reduced in the Dome-P925I. (C) STAT92E transcriptional reporter activity assay. JAK/STAT pathway signaling is greatly reduced in cells expressing Dome P925I even in the presence of Upd2 ligand, $**p < 0.01$. (D) Immunoprecipitation assays show that both Dome-FLAG and Et/Lat-FLAG can coprecipitate Hop-HA. (E) Immunoprecipitation assays after transfection of the indicated Dome-FLAG and Et/Lat-FLAG proteins show that both proteins can coprecipitate endogenous STAT92E. dsRNA targeting the labeled mRNAs was added as indicated; ctrl, a nontargeting dsRNA. Knockdown of endogenous Dome (final lane) did not disrupt the ability of Et/Lat to bind to STAT92E. Upd2-conditioned medium was added for 15 min before protein harvesting. EV, empty vector. (F) Immunoprecipitation of endogenous STAT92E from cells expressing FLAG-tagged Dome or Et/Lat shows that both receptors are coprecipitated. Treatment with dsRNAs targeting the endogenous receptors suggests that interactions detected are independent of potential heterodimer formation.

possibility, we also tested for physical interactions between Hop and Et/Lat. As predicted, immunoprecipitation of both Dome and Et/Lat is able to coprecipitate Hop (Figure 2D).

Previous studies of mammalian receptors identified STAT-binding sites within the intracellular domain of multiple cytokine receptors. STAT5 was shown to bind to a YXXL motif in EPO-R (Klingmüller *et al.*, 1996), and STAT3 can associate with GP130 via a YXXQ motif (Stahl *et al.*, 1995). Consistent with these vertebrate receptors, Dome also contains a YXXQ motif, which may represent a STAT92E-binding site (SBS in Figure 2A; Chen *et al.*, 2002). Neither STAT consensus binding motif is present within the Et/Lat intracellular domain; however, five tyrosine residues (highlighted in Figure 2A), including two YXXN sites (solid gray boxes in Figure 2A), are present. Somewhat surprisingly, we find that Et/Lat is able to bind to endogenously expressed STAT92E, an interaction that we detect in reciprocal precipitation experiments of both receptor and STAT92E (Figure 2, E and F). Furthermore, we find that the interaction is not destabilized upon Dome RNAi treatment and is not modulated by addition of ligand (Figure 2, E and F), suggesting that STAT92E is binding directly to Et/Lat in this system. Given the similarity of the glutamine residue within the Dome YXXQ STAT-binding motif and the amide side chain of asparagine, it is tempting to suggest that the two YXXN motifs present in the cytosolic tail of Et/Lat may represent the STAT92E binding sites in this molecule.

Et/Lat is unable to bind Upd ligands

Because Et/Lat is able to bind the key intracellular signaling pathway components Hop and STAT92E, it is possible that an inability to bind to extracellular ligands may explain its negative pathway activity. Despite clear homology between the cytokine-binding motifs of both Dome and Et/Lat (Makki *et al.*, 2010), we investigated whether this molecule was in fact able to bind to any of the Upd family of ligands (Upd, Upd2, Upd3; Harrison *et al.*, 1998; Hombria *et al.*, 2005; Wright *et al.*, 2011). First, we cotransfected cells with green fluorescent protein (GFP)-tagged versions of the Upd, Upd2, and Upd3 cytokines previously shown to be active (Wright *et al.*, 2011), along with HA-tagged Dome or Et/Lat. We find that Et/Lat is unable to bind to any of the pathway ligands at detectable levels under conditions in which interactions with Dome are clearly detected (Figure 3A). We next sought to confirm that the interactions between Dome and pathway ligands were not arising from their coexpression and therefore repeated this experiment using Upd2-conditioned medium. We found that Dome coprecipitated with GFP-tagged ligand present in the conditioned medium, suggesting a stable interaction at the plasma membrane. However, under the same conditions, no interaction was detected between Upd2-GFP and Et/Lat. In addition, RNAi targeting the untranslated region (UTR) of endogenous *dome* mRNA had no effect on this result, indicating that endogenous Dome is not affecting receptor/ligand interactions in this assay and suggesting that Dome:Et/Lat heterodimers are also incapable of binding ligand. This failure to interact with Upd2-GFP suggests that the shorter receptor is either unable to bind ligand or that any interaction that does occur is weaker than the Dome:ligand interaction and is disrupted under the experimental conditions used (Figure 3B).

Although independently identified as a negative regulator of JAK/STAT signaling in a number of assays, the mechanism underlying how Et/Lat expression reduces pathway activity has been unclear. It was previously shown that Dome homodimerization is required to form a functional signaling complex, whereas monomeric Dome is not active (Brown *et al.*, 2003). By inference, a single

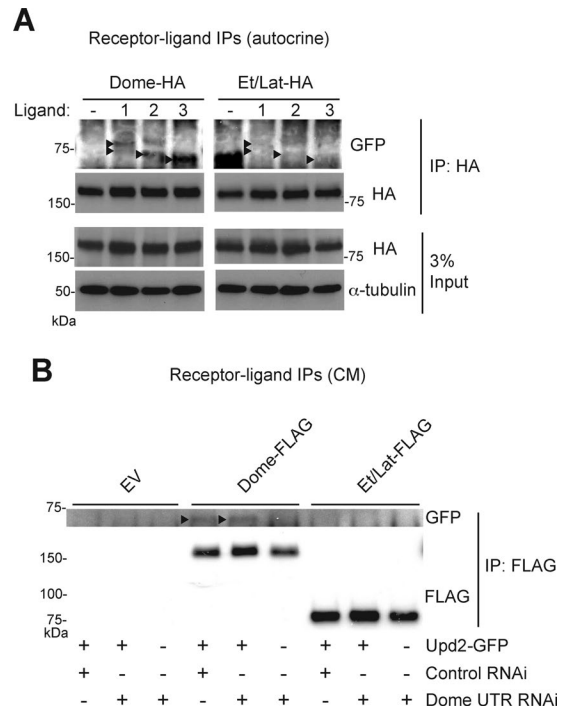


FIGURE 3: Et/Lat cannot bind to pathway ligands. (A) Immunoprecipitation assays show that Dome-FLAG can coprecipitate cotransfected GFP-tagged pathway ligands (black arrowheads). By contrast, no interaction is detected after precipitation of Et/Lat-FLAG. 1, Upd1; 2, Upd2; 3, Upd3. Diffuse banding pattern of ligand-GFP fusions are believed to be affected by posttranslational glycosylation of these secreted proteins. (B) Immunoprecipitation assays show that Upd2-GFP (arrowheads) can be coprecipitated from conditioned medium by cells expressing Dome-FLAG but not by cells expressing empty vector (EV) or Et/Lat-FLAG. Addition of dsRNA targeting the UTR of the *dome* mRNA was used to deplete endogenous Dome from cells, ensuring that the interaction observed is via the transfected FLAG-tagged proteins.

molecule of Dome is either not capable of binding to ligand or unable to transduce signaling in response to binding. Here we demonstrate that Dome can effectively form heterodimers with Et/Lat and that the cytosolic domains of both receptor molecules are capable of binding to Hop and STAT92E. Furthermore, we demonstrate that whereas Dome homodimers are able to bind to each of the three pathway ligands, no such binding could be detected between Et/Lat and Upd, Upd2, or Upd3 (Figure 3).

Our data suggest two potential mechanisms via which Et/Lat negatively regulates downstream pathway activity. First, Et/Lat could act as a negative regulator by forming heterodimers with Dome. This generates receptor complexes containing only one molecule capable of binding to extracellular ligands, an arrangement likely to be incapable of transducing pathway activation to intracellular components. The second potential mechanism is that Et/Lat homodimers may simply bind to positively acting components of the JAK/STAT pathway such as Hop and STAT92E, sequestering these into signaling incompetent complexes. It is most likely that both mechanisms contribute toward negative regulation of the pathway at some level. However, the ability of additional Dome to partly relieve Et/Lat-induced pathway suppression (Figure 1A) argues against a “squelching” mechanism and instead suggests that Et/Lat is likely to negatively regulate JAK/STAT signaling via formation of inactive Dome:Et/Lat heterodimers.

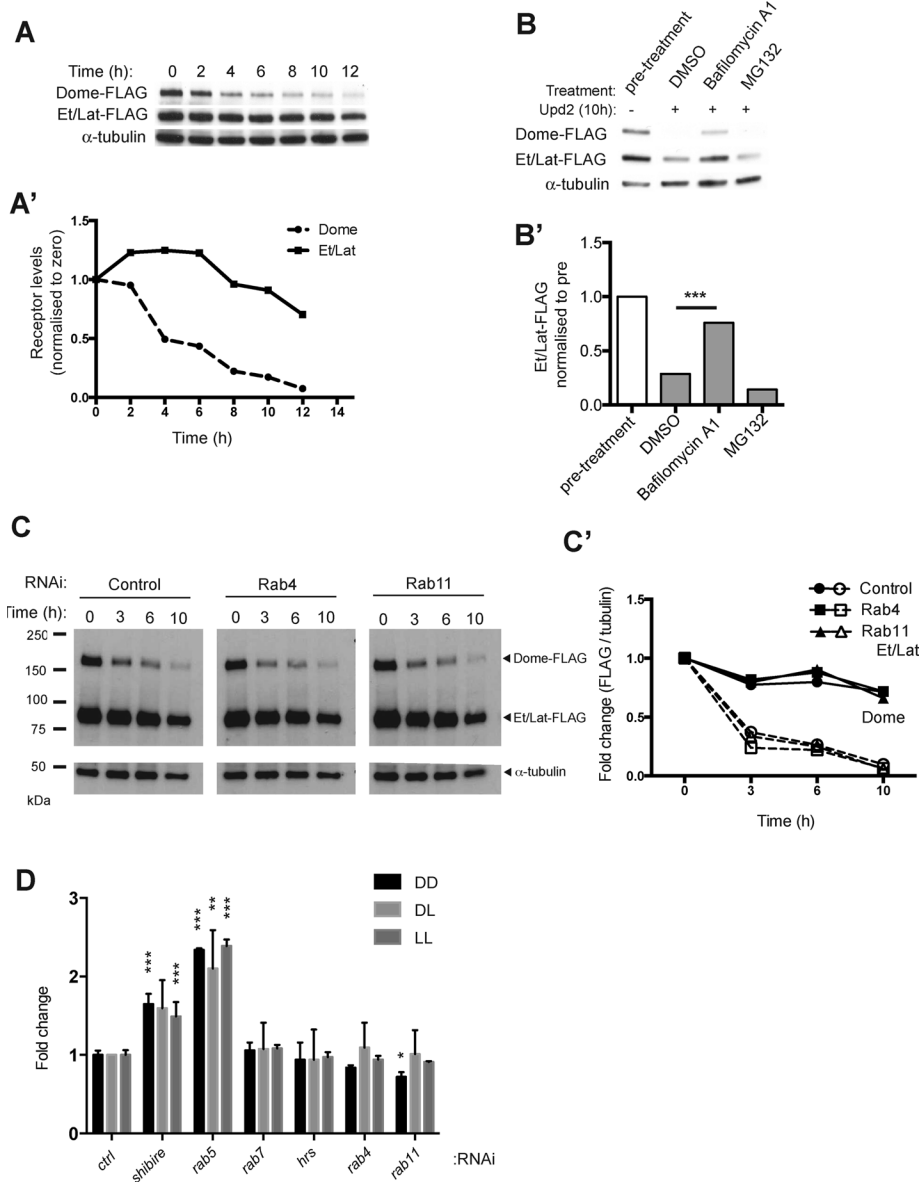


FIGURE 4: Et/Lat is trafficked and degraded in the lysosome via a slower mechanism than that for Dome. (A) Time course of receptor degradation over the indicated time in hours. Cyclohexamide to block new translation and Upd2-conditioned medium were present throughout the assay. (A') Quantification of data shown in A after normalization of FLAG to α -tubulin (Dome-FLAG, dashed line; Et/Lat-FLAG, solid line). (B) Levels of Dome-FLAG and Et/Lat-FLAG 10 h after the addition of cyclohexamide and Upd2 ligand stimulation. By comparison to the dimethyl sulfoxide carrier control, incubation with 0.2 μ M bafilomycin A1 greatly reduced ligand-induced degradation of Dome and Et/Lat, whereas treatment with 10 μ M MG132 did not. (B') Quantification of data shown in B. (C) Time course of Dome-FLAG and Et/Lat-FLAG degradation over the indicated time course after prior treatment with dsRNA targeting the indicated mRNAs. (C') Quantification of receptor levels normalized to α -tubulin and shown by solid lines (Et/Lat-FLAG) and dashed lines (Dome-FLAG). (D) Steady-state levels of Dome:Dome (DD), Dome:Et/Lat (DL), and Et/Lat:Et/Lat (LL) dimers as reported by the β blue- β lau bimolecular complementation and β -Glo assay after 5 d of RNAi treatment. Results are shown as fold changes to control. Control levels were averaged from two wells treated with *rh5* dsRNA. Significant results are shown; all unlabeled bars were not significantly different from controls. * $p < 0.05$, ** $p < 0.01$, *** $p < 0.001$.

Et/Lat has increased protein stability compared to Dome

We and others previously demonstrated that Dome is rapidly internalized and targeted for lysosomal degradation even in the absence of ligand stimulation, a trafficking process that results in attenuation

of signaling (Vidal *et al.*, 2010; Stec *et al.*, 2013; Ren *et al.*, 2015). We therefore investigated whether the turnover dynamics of Et/Lat was similar to that of Dome, using a time-course experiment that involved ligand stimulation in the presence of cyclohexamide (CHX) to block new protein translation. Consistent with previous findings (Stec *et al.*, 2013), we observed a rapid decrease in Dome protein levels (Figure 4, A and A'). By contrast, Et/Lat appeared to be much more stable, showing only a modest decrease in protein levels even after 10 h of stimulation (Figure 4, A and A'). To determine whether this difference was the result of alternative degradation mechanisms, we examined the effect of the proteasomal inhibitor MG132 and the lysosomal inhibitor bafilomycin A1 on the stability of both receptors. As is also the case for Dome, Et/Lat degradation occurs within the lysosome, as shown by the increased stability of the receptor after treatment with bafilomycin A1 (Figure 4, B and B'; Stec *et al.*, 2013).

We next examined whether the greater stability of Et/Lat might be a consequence of its recycling back to the plasma membrane after endocytic uptake. We therefore knocked down Rab4 and Rab11, two molecules key to the recycling of previously endocytosed proteins (Jones *et al.*, 2006), and measured the degradation rate of both Dome and Et/Lat over time (Figure 4C). Even after quantification and normalization for loading differences, we found no change in the stability of either receptor compared with controls (Figure 4, C and C'), suggesting that endocytic recycling does not play a significant role in the differing stability of the Dome and Et/Lat receptors.

Finally, we returned to our blue- β lau complementation assay to examine the steady-state circumstances under which Dome and Et/Lat homodimers and Dome:Et/Lat heterodimers accumulate in cells. We found that knockdown of *shibire* and *Rab5*, which encode components required for the formation of the early endosome, resulted in increased levels of each receptor dimer combination (Figure 4D). By contrast, knockdown of *rab7* or *hrs*, two molecules involved in the formation of the late endosome and multivesicular bodies, respectively, or *rab4* and *rab11*, required for recycling, have no effect on the steady-state levels of receptor complexes (Figure 4D). In the absence of antibodies, we are unable to confirm complete loss of these proteins;

however, if taken at face value, this result suggests that blocking the formation of early endosomes is sufficient to cause an increase in the levels of receptor dimers at the plasma membrane. By contrast, blocking downstream aspects of endocytic trafficking has no effect

on the levels of receptor dimers, suggesting that receptors are no longer dimerized in endosomal compartments.

We suggest that Et/Lat inhibits JAK/STAT signaling via the formation of signaling-incompetent Dome:Et/Lat heterodimers. If Et/Lat were to strongly down-regulate pathway signaling via competitive binding with Dome, this would require higher levels of Et/Lat in relation to Dome. Evidence from previous *in vivo* studies, as well as from our analysis of Et/Lat and Dome stability, suggests that this is indeed the case. *In vivo*, Et/Lat acts within the lymph gland to down-regulate pathway signaling after infestation by the parasitic wasp *Leptopilina boulardi*. Strikingly, infestation not only triggers the up-regulation of Et/Lat expression, but also simultaneously down-regulates *dome* mRNA levels, a combination that is likely to change the relative abundance of receptors present *in vivo* (Makki *et al.*, 2010). In addition to changes in relative gene expression levels, we demonstrated that Et/Lat has a significantly longer protein half-life than Dome. As a result, expression of long-lived Et/Lat protein could produce strong and lasting effects with relatively small changes in transcription.

In vertebrates, multiple ligands, including IL-6 and IL-11, first bind to their respective α -receptors, forming ligand:receptor complexes, which then associate with long β -receptors to form functional signaling complexes (Heinrich *et al.*, 2003). In this scenario, expression of α -receptors sensitizes cells to ligand-induced signaling and thus positively regulates downstream signaling. By contrast, a handful of short receptors, including IL-13R α 2, soluble forms of oncostatin M receptor (OSMR), and short forms of the prolactin receptor, act negatively (Perrot-Applanat *et al.*, 1997; Diveu *et al.*, 2006; Chandriani *et al.*, 2014). In the case of IL-13R α 2 and soluble OSMR, short receptors do not interact with JAKs or STATs, but instead act as decoys that compete for ligand binding (Diveu *et al.*, 2006; Chandriani *et al.*, 2014). By contrast, the short, 291-amino acid form of the prolactin receptor is identical to the full-length form and can bind to JAK1 but is missing cytoplasmic domains required for STAT binding (Lebrun *et al.*, 1995; Perrot-Applanat *et al.*, 1997). This short receptor cannot activate downstream signaling and acts in a dominant-negative manner to reduce prolactin-mediated JAK/STAT pathway activation (Perrot-Applanat *et al.*, 1997; Devi *et al.*, 2009). Similarly to Dome and Et/Lat, prolactin receptors also predimerize in the absence of ligand to form both long:long homodimers and long:short heterodimers (Qazi *et al.*, 2006; Tan and Walker, 2010). Whereas homodimers signal through JAK2 and STAT5 after ligand stimulation, heterodimers are able to bind ligand but do not activate downstream JAK/STAT signaling (reviewed in Devi and Halperin, 2014).

Although they share some mechanistic similarities with the short form of the human prolactin receptor, we show that Et/Lat is unable to associate with extracellular ligands but is able to bind to both the JAK Hop and STAT92E, as well as dimerize with the long receptor Dome. In both examples, the inability to bind to one key component of the pathway results in a strong dominant-negative effect and the down-regulation of pathway signaling. As such, it is possible that insights into molecular mechanisms of short receptor antagonists in *Drosophila* may provide clues to similar mechanisms in vertebrate systems.

MATERIALS AND METHODS

Cell culture

Drosophila Kc₁₆₇ cell lines were cultured, and conditioned medium was produced as previously described (Vidal *et al.*, 2010). Cell transfections were performed using Effectene (Qiagen, Valencia, CA) according to the manufacturer's instructions. Pathway activity was measured using the 6x2xDra¹Luc reporter assay, as previously described (Müller *et al.*, 2005; Fisher *et al.*, 2012), and is presented

as the ratio of *Firefly* (reporter) to *Renilla* (constitutively expressed cell density control) luciferase. RNAi experiments, pharmacological treatments, and socs36E quantitative PCR were carried out as previously described (Stec *et al.*, 2013). Templates for double-strand RNA (dsRNA) generation were provided by the Sheffield RNAi Screening Facility, using designs previously described (Horn *et al.*, 2010; Fisher *et al.*, 2012).

Blue-βluc and β-Glo assays

Kc₁₆₇ cells were batch-transfected with *pAc-Dome-LacZ-Δα*, *pAc-Dome-LacZ-Δω*, and *pAc-RLuc* and incubated for 24 h. Cells were either split into 12-well plates for retransfection with Et/Lat-HA or control plasmid or changed into serum-free medium and split into 384-well white plates with 250 ng of dsRNA. In RNAi experiments, serum-containing medium was added after 1 h. After 5 d, cells were assayed for β-gal activity using β-Glo Assay System (Promega), followed by measurement of *Renilla* luciferase activity. For whole-cell assays, cells were fixed in 2% glutaraldehyde/phosphate-buffered saline before development using 5-bromo-4-chloro-3-indolyl-β-D-galactopyranoside (X-gal), using standard techniques (Brown *et al.* 2003).

Constructs

The previously described plasmids were *pAc-Dome-FLAG*, *pAc-Dome-HA*, and *pAc-Hop-HA* (Stec *et al.*, 2013), and *pAc-Upd-GFP*, *pAc-Upd2-GFP*, and *pAc-Upd3-GFP* (Wright *et al.*, 2011). A full-length sequenced Et/Lat cDNA clone (MIP10547; a kind gift of the Susan Celniker lab [Berkeley, CA] and the Berkeley *Drosophila* Genome Project [BDGP]) was used as template for amplification. The PCR-amplified fragment was inserted into a Gateway System Entry vector using a *pENTR* Directional TOPO Cloning Kit (Invitrogen, Carlsbad, CA) and subsequently cloned into destination vector *pAWH* (*Drosophila* Gateway Vector Collection) using Gateway LR Clonase II Enzyme Mix (Invitrogen), according to manufacturer's instructions. Gateway destination vectors were obtained from the *Drosophila* Genomics Resource Center (Bloomington, IN). Single point mutation in Dome was introduced using a QuikChange II XL Site-Directed Mutagenesis Kit (Agilent Technologies, Santa Clara, CA) using the following primers: Dome-P9251-F, GATATCGGTC-TAGTGCTGattCAGGGAATCATGGAGACC; and Dome-P9251-R, GGTCTCCATGATTCCCTGaatCAGCACTAGACCGATATC.

Dome-LacZ-Δα and *Dome-LacZ-Δω* were cut out from *pUAST* vectors previously described using standard methods (Brown *et al.*, 2003) and cloned into *pAc5.1* (Invitrogen). Et/Lat was subcloned into *pCR-2.1-TOPO* (Invitrogen) and then used to replace Dome to create *pAc-Et/Lat-Δα* and *pAc-Et/Lat-Δω*.

Immunoprecipitation, Western blotting, and antibodies

Immunoprecipitation and Western blotting were carried out as described previously (Stec *et al.*, 2013). The 3% of the input used is shown in each experiment. Tubulin was used as a loading control on all westerns. Kilodalton markers are shown for each Western panel in every figure. Western densitometric analysis was carried out using ImageJ (National Institutes of Health, Bethesda, MD) and analyzed in Prism. One-way analysis of variance with multiple comparisons was used to calculate statistical significance. The following antibodies were used: 1:2500 monoclonal M2 anti-FLAG (Sigma-Aldrich, St. Louis, MO), 1:2500 anti-HA High Affinity (Roche, Basel, Switzerland), 1:400 anti-pTyrosine PY20 (Calbiochem, San Diego, CA), 1:5000 monoclonal anti- α -tubulin (Sigma-Aldrich), 1:200 anti-STAT92E (Santa Cruz Biotechnology, Dallas, TX), and 1:500 anti-GFP (Abcam, Cambridge, UK).

Protein alignment

Alignment of amino acid sequences was carried out using ClustalW2 (www.ebi.ac.uk/Tools/msa/clustalw2/). Transmembrane and intracellular portions were aligned for Dome (amino acids 888–1112) and Et/Lat (amino acids 517–645).

ACKNOWLEDGMENTS

We thank Lucie N’Koy, Lindsay Farrell, and Kirsty Johnstone for technical assistance and James Castelli-Gair Hombria, the Celniker lab, and the BDGP for reagents. M.P.Z. was a Cancer Research-UK Senior Cancer Research Fellow, W.S. was a Cancer Research-UK PhD fellow, and K.F. was supported by the Framework 7 Project Cancer Pathways.

REFERENCES

- Amoyel M, Anderson AM, Bach EA (2014). JAK/STAT pathway dysregulation in tumors: a *Drosophila* perspective. *Semin Cell Dev Biol* 28, 96–103.
- Arbouzova NI, Zeidler MP (2006). JAK/STAT signalling in *Drosophila*: insights into conserved regulatory and cellular functions. *Development* 133, 2605–2616.
- Bausek N (2013). JAK-STAT signaling in stem cells and their niches in *Drosophila*. *JAKSTAT* 2, e25686.
- Bina S, Wright VM, Fisher KH, Milo M, Zeidler MP (2010). Transcriptional targets of *Drosophila* JAK/STAT pathway signalling as effectors of haematopoietic tumour formation. *EMBO Rep* 11, 201–207.
- Binari R, Perrimon N (1994). Stripe-specific regulation of pair-rule genes by *hopscotch*, a putative Jak family tyrosine kinase in *Drosophila*. *Genes Dev* 8, 300–312.
- Brown S, Hu N, Hombria JC (2001). Identification of the first invertebrate interleukin JAK/STAT receptor, the *Drosophila* gene *domeless*. *Curr Biol* 11, 1700–1705.
- Brown S, Hu N, Hombria JC (2003). Novel level of signalling control in the JAK/STAT pathway revealed by *in situ* visualisation of protein-protein interaction during *Drosophila* development. *Development* 130, 3077–3084.
- Chandriani S, DePianto DJ, N’Diaye EN, Abbas AR, Jackman J, Bevers J 3rd, Ramirez-Carrozzi V, Pappu R, Kauder SE, Toy K, et al. (2014). Endogenously expressed IL-13Ralpha2 attenuates IL-13-mediated responses but does not activate signaling in human lung fibroblasts. *J Immunol* 193, 111–119.
- Chen HW, Chen X, Oh SW, Marinissen MJ, Gutkind JS, Hou SX (2002). *mom* identifies a receptor for the *Drosophila* JAK/STAT signal transduction pathway and encodes a protein distantly related to the mammalian cytokine receptor family. *Genes Dev* 16, 388–398.
- Devi YS, Halperin J (2014). Reproductive actions of prolactin mediated through short and long receptor isoforms. *Mol Cell Endocrinol* 382, 400–410.
- Devi YS, Shehu A, Halperin J, Stocco C, Le J, Seibold AM, Gibori G (2009). Prolactin signaling through the short isoform of the mouse prolactin receptor regulates DNA binding of specific transcription factors, often with opposite effects in different reproductive issues. *Reprod Biol Endocrinol* 7, 87.
- Diveu C, Venereau E, Froger J, Ravon E, Grimaud L, Rousseau F, Chevallerier S, Gascan H (2006). Molecular and functional characterization of a soluble form of oncostatin M/interleukin-31 shared receptor. *J Biol Chem* 281, 36673–36682.
- Fisher KH, Wright VM, Taylor A, Zeidler MP, Brown S (2012). Advances in genome-wide RNAi cellular screens: a case study using the *Drosophila* JAK/STAT pathway. *BMC Genomics* 13, 506.
- Hannah R, Stroke I, Betz N (2003). The Beta-Glo[®] Assay System provides a sensitive luminescent reagent for detecting and quantifying β -galactosidase activity in a homogeneous assay format. *Cell Notes* 6, 16–18.
- Harrison DA, McCoon PE, Binari R, Gilman M, Perrimon N (1998). *Drosophila* unpaired encodes a secreted protein that activates the JAK signaling pathway. *Genes Dev* 12, 3252–3263.
- Heinrich PC, Behrmann I, Haan S, Hermanns HM, Muller-Newen G, Schaper F (2003). Principles of interleukin (IL)-6-type cytokine signalling and its regulation. *Biochem J* 374, 1–20.
- Hombria JC, Brown S (2002). The fertile field of *Drosophila* Jak/STAT signalling. *Curr Biol* 12, R569–R575.
- Hombria JC, Brown S, Hader S, Zeidler MP (2005). Characterisation of Upd2, a *Drosophila* JAK/STAT pathway ligand. *Dev Biol* 288, 420–433.
- Horn T, Sandmann T, Boutros M (2010). Design and evaluation of genome-wide libraries for RNA interference screens. *Genome Biol* 11, R61.
- Hou XS, Melnick MB, Perrimon N (1996). Marelle acts downstream of the *Drosophila* HOP/JAK kinase and encodes a protein similar to the mammalian STATs. *Cell* 84, 411–419.
- Jones MC, Caswell PT, Norman JC (2006). Endocytic recycling pathways: emerging regulators of cell migration. *Curr Opin Cell Biol* 18, 549–557.
- Kallio J, Myllymaki H, Gronholm J, Armstrong M, Vanha-aho LM, Makinen L, Silvennoinen O, Valanne S, Ramet M (2010). Eye transformer is a negative regulator of *Drosophila* JAK/STAT signaling. *FASEB J* 24, 4467–4479.
- Kaplan DH, Greenlund AC, Tanner JW, Shaw AS, Schreiber RD (1996). Identification of an interferon-gamma receptor alpha chain sequence required for JAK-1 binding. *J Biol Chem* 271, 9–12.
- Klingmüller U, Bergelson S, Hsiao JG, Lodish HF (1996). Multiple tyrosine residues in the cytosolic domain of the erythropoietin receptor promote activation of STAT5. *Proc Natl Acad Sci USA* 93, 8324–8328.
- Lebrun JJ, Ali S, Ullrich A, Kelly PA (1995). Proline-rich sequence-mediated Jak2 association to the prolactin receptor is required but not sufficient for signal transduction. *J Biol Chem* 270, 10664–10670.
- Makki R, Meister M, Penetier D, Ubeda JM, Braun A, Daburon V, Krzemier J, Bourbon HM, Zhou R, Vincent A, Crozatier M (2010). A short receptor downregulates JAK/STAT signalling to control the *Drosophila* cellular immune response. *PLoS Biol* 8, e1000441.
- May P, Gerhart C, Heesel B, Welte T, Doppler W, Graeve L, Horn F, Heinrich PC (1996). Comparative study on the phosphotyrosine motifs of different cytokine receptors involved in STAT5 activation. *FEBS Lett* 394, 221–226.
- Morin-Poulard I, Vincent A, Crozatier M (2013). The *Drosophila* JAK-STAT pathway in blood cell formation and immunity. *JAKSTAT* 2, e25700.
- Müller P, Kutenkeuler D, Gesellchen V, Zeidler MP, Boutros M (2005). Identification of JAK/STAT signalling components by genome-wide RNA interference. *Nature* 436, 871–875.
- Perrot-Appianat M, Gualillo O, Pezet A, Vincent V, Edery M, Kelly PA (1997). Dominant negative and cooperative effects of mutant forms of prolactin receptor. *Mol Endocrinol* 11, 1020–1032.
- Qazi AM, Tsai-Morris CH, Dufau ML (2006). Ligand-independent homo- and heterodimerization of human prolactin receptor variants: inhibitory action of the short forms by heterodimerization. *Mol Endocrinol* 20, 1912–1923.
- Rahaman SO, Sharma P, Harbor PC, Aman MJ, Vogelbaum MA, Haque SJ (2002). IL-13R(alpha)2, a decoy receptor for IL-13 acts as an inhibitor of IL-4-dependent signal transduction in glioblastoma cells. *Cancer Res* 62, 1103–1109.
- Ren W, Zhang Y, Li M, Wu L, Wang G, Baeg GH, You J, Li Z, Lin X (2015). Windpipe controls *Drosophila* intestinal homeostasis by regulating JAK/STAT pathway via promoting receptor endocytosis and lysosomal degradation. *PLoS Genet* 11, e1005180.
- Rossi F, Charlton CA, Blau HM (1997). Monitoring protein-protein interactions in intact eukaryotic cells by beta-galactosidase complementation. *Proc Natl Acad Sci USA* 94, 8405–8410.
- Stahl N, Farruggella TJ, Boulton TG, Zhong Z, Darnell JEJ, Yancopoulos GD (1995). Choice of STATs and other substrates specified by modular tyrosine-based motifs in cytokine receptors. *Science* 267, 1349–1353.
- Stec W, Vidal O, Zeidler MP (2013). *Drosophila* SOCS36E negatively regulates JAK/STAT pathway signaling via two separable mechanisms. *Mol Biol Cell* 24, 3000–3009.
- Taga T, Kishimoto T (1997). Gp130 and the interleukin-6 family of cytokines. *Annu Rev Immunol* 15, 797–819.
- Tan D, Walker AM (2010). Short form 1b human prolactin receptor downregulates expression of the long form. *J Mol Endocrinol* 44, 187–194.
- Teng Y, Ross JL, Cowell JK (2014). The involvement of JAK-STAT3 in cell motility, invasion, and metastasis. *JAKSTAT* 3, e28086.
- Thomas SJ, Snowden JA, Zeidler MP, Danson SJ (2015). The role of JAK/STAT signalling in the pathogenesis, prognosis and treatment of solid tumours. *Br J Cancer* 113, 365–371.
- Vidal OM, Stec W, Bausek N, Smythe E, Zeidler MP (2010). Negative regulation of *Drosophila* JAK-STAT signalling by endocytic trafficking. *J Cell Sci* 123, 3457–3466.
- Villarino AV, Kanno Y, Ferdinand JR, O’Shea JJ (2015). Mechanisms of Jak/STAT signaling in immunity and disease. *J Immunol* 194, 21–27.
- Wright VM, Vogt KL, Smythe E, Zeidler MP (2011). Differential activities of the *Drosophila* JAK/STAT pathway ligands Upd, Upd2 and Upd3. *Cell Signal* 23, 920–927.
- Yan R, Small S, Desplan C, Dearolf CR, Darnell JEJ (1996). Identification of a Stat gene that functions in *Drosophila* development. *Cell* 84, 421–430.