

SCIENTIFIC REPORTS

**OPEN**

The Molecular Karyotype of 25 Clinical-Grade Human Embryonic Stem Cell Lines

Received: 07 August 2015
Accepted: 27 October 2015
Published: 26 November 2015

Maurice A. Canham¹, Amy Van Deusen¹, Daniel R. Brison², Paul A. De Sousa^{3,4}, Janet Downie³, Liani Devito⁵, Zoe A. Hewitt⁶, Dusko Ilic⁵, Susan J. Kimber⁷, Harry D. Moore⁶, Helen Murray³ & Tilo Kunath¹

The application of human embryonic stem cell (hESC) derivatives to regenerative medicine is now becoming a reality. Although the vast majority of hESC lines have been derived for research purposes only, about 50 lines have been established under Good Manufacturing Practice (GMP) conditions. Cell types differentiated from these designated lines may be used as a cell therapy to treat macular degeneration, Parkinson's, Huntington's, diabetes, osteoarthritis and other degenerative conditions. It is essential to know the genetic stability of the hESC lines before progressing to clinical trials. We evaluated the molecular karyotype of 25 clinical-grade hESC lines by whole-genome single nucleotide polymorphism (SNP) array analysis. A total of 15 unique copy number variations (CNVs) greater than 100 kb were detected, most of which were found to be naturally occurring in the human population and none were associated with culture adaptation. In addition, three copy-neutral loss of heterozygosity (CN-LOH) regions greater than 1 Mb were observed and all were relatively small and interstitial suggesting they did not arise in culture. The large number of available clinical-grade hESC lines with defined molecular karyotypes provides a substantial starting platform from which the development of pre-clinical and clinical trials in regenerative medicine can be realised.

Since the derivation of human embryonic stem cells (hESCs) from blastocysts in 1998¹, and the more recent production of human induced pluripotent stem cells (iPSCs) from adult tissues², anticipation has been growing with regard to their potential as cell therapies for a number of incurable conditions. As with any new medicine, Good Manufacturing Practice (GMP) is required to produce hESC/iPSC-derived cell products for clinical use in humans³. However, while over 1200 hESC lines have been established and reported worldwide⁴, the majority are suitable only for research purposes due to the sourcing of embryonic material, derivation process and subsequent handling procedures. Frequently, derivation and culture methods employ mouse feeder cells or poorly defined media containing animal-based products^{1,5}, which may render these cell lines unusable as a starting material for any cell-based clinical application.

In recent years, there have been advances in the derivation of hESC lines whereby fully defined media devoid of animal-derived products is used^{6,7}, and the traditional mouse feeders have been replaced with GMP-qualified human feeders^{8–10} or recombinant human proteins as a substrate on which to culture

¹MRC Centre for Regenerative Medicine, Institute for Stem Cell Research, School of Biological Sciences, The University of Edinburgh, UK. ²Department of Reproductive Medicine, St. Mary's Hospital, Central Manchester NHS Foundation Trust, Manchester Academic Health Sciences Centre, Manchester, UK. ³Roslin Cells Limited, Nine Edinburgh BioQuarter, Edinburgh, UK. ⁴Centre for Clinical Brain Sciences and MRC Centre for Regenerative Medicine, The University of Edinburgh, UK. ⁵Stem Cell Laboratories, Guy's Assisted Conception Unit, Division of Women's Health, Faculty of Life Sciences and Medicine, King's College London, London, UK. ⁶Centre for Stem Cell Biology, Department of Biomedical Science, The University of Sheffield, Sheffield, UK. ⁷Faculty of Life Sciences, The University of Manchester, Manchester, UK. Correspondence and requests for materials should be addressed to T.K. (email: tilo.kunath@ed.ac.uk)

Derivation Centre	EUTCD Grade Cell Lines	Number
King's College London ¹	KCL031, KCL032, KCL033, KCL034, KCL037, KCL038, KCL039, KCL040	8
The University of Manchester	Man11, Man12, Man13, Man14, Man15, Man16	6
Newcastle University	<i>NCL14</i>	1
Roslin Cells Ltd, Edinburgh	RC9, RC11, RC12, RC13, RC14, RC15, RC16, RC17	8
The University of Sheffield	<i>MasterShef1, MasterShef2, MasterShef3, MasterShef4, MasterShef5, MasterShef6, MasterShef7, MasterShef8, MasterShef10, MasterShef11, MasterShef12, MasterShef13, MasterShef14, Shef3.2, Shef6.1</i>	15
Total		38

Table 1. List of 38 EUTCD compliant (clinical-grade) hESC lines. The 25 hESC lines analysed by SNP analysis are shown in bold. ¹All eight (8) of the KCL hESC lines are listed on the NIH Stem Cell Registry (escr.nih.gov) making them available for NIH-funded projects in the USA.

hESCs^{11–14}. Furthermore, animal-based enzymes and guinea pig complement used to isolate the inner cell mass for hESC derivation have been replaced with mechanical isolation or laser microdissection^{15–19}. These efforts have culminated in the derivation of approximately 50 clinical-grade hESC lines from various centres across the world^{20–23} (www.mrc.ac.uk/research/facilities/stem-cell-bank; stemcells.nih.gov).

Remarkably, 38 of these lines have been derived among five different centres in the United Kingdom through funding from the Medical Research Council (MRC), Scottish Enterprise, the North West Development Agency and the Juvenile Diabetes Research Foundation. The MRC launched an initiative in 2005 to provide infrastructure funding to UK *in vitro* fertilization (IVF) units to provide GMP-compliant embryos for hESC line derivation and further funded the Human Embryonic Stem Cell Co-ordinators (hESCCO) network, subsequently the National Clinical hESC Forum. This allowed the derivation centres to work with the Human Fertilisation and Embryology Authority and the UK Stem Cell Bank to establish common parameters for patient consent, screening and embryo procurement for the derivation of clinical-grade hESC lines. Ultimately this farsighted policy has yielded a cohort of hESC lines which have benefited from the shared implementation of GMP-compliant IVF laboratory standards, hESC derivation procedures and ethical principles for donor consenting²⁴. A list of clinical-grade hESC lines conforming to the European Union Tissue and Cells Directives (Directives 2004/23/EC and 2006/17/EC) is shown in Table 1. These directives introduced common safety and quality standards across European member states to ensure that all tissues and cells used in patient treatment are traceable from donor to recipient, thus implementing key principles of GMP.

The value of a large number of different cell lines as starting material for clinical applications is three-fold: (a) different hESC lines have varying propensities to generate specific cell lineages during *in vitro* differentiation²⁵, (b) hESC lines may harbour or acquire genetic anomalies potentially excluding them from clinical use²⁶, and (c) in order to accommodate human leucocyte antigen (HLA) matching to a broad section of potential patients a sizeable number of hESC lines would be required. It has been estimated that approximately 150 different lines with particular HLA haplotypes would be required to cover ~93% of potential UK recipients²⁷. With the advent of iPSC technology, the latter issue will be addressed by derivation of hiPSC lines from individuals homozygous for common HLA loci. An international effort is currently underway to address this²⁸, but the issues of line-to-line variation and genetic stability of hESC and iPSC lines will remain²⁹.

In accordance with GMP standards applicable to the sourcing and the application of raw materials used during production processes, such as hESC/iPSC cell derivation and differentiation into desired cell types, there is emerging evidence that equal scrutiny should be undertaken to account for the genetic health of cells at all stages of production^{3,30}. Some characteristics of self-renewal and multipotency that define pluripotent stem cells (PSCs) are also shared by tumour stem cells³¹. This has been exemplified by the identification of non-random genetic changes, particularly gains of chromosomes 12, 17 and X, common to embryonal carcinoma cell lines and PSCs following prolonged culture^{26,32}. Moreover, recent studies using high-resolution single nucleotide polymorphism (SNP) analysis of PSCs have shown copy number variations (CNVs) that can lead to gene expression alterations functionally linked to cancer³³. One such microduplication associated with oncogenic transformation was detected on chromosome 20q11.21^{34,35}. A comprehensive survey of 125 different PSC lines from many different laboratories across the world showed that about one third of lines acquired a culture-induced genomic variation upon prolonged culture, the most common of which was chromosome 20q11.21 microduplication³⁶. The anti-apoptotic gene, *BCL2L1*, within this region has been shown to be a driver of growth advantage^{36,37}. In addition to anomalies acquired during self-renewal, the process of *in vitro* differentiation from genetically healthy PSCs can also lead to genomic instability³⁸.

However, most CNVs are benign and relatively large duplications and deletions (>100 kb) are common in healthy individuals³⁹. Such parent-of-origin CNVs will also be present in blastocysts and hESC lines derived from them. The ideal way to determine if a CNV identified in a hESC line is naturally occurring is to genotype the parents of the donated blastocyst. This is indeed possible in cases involving

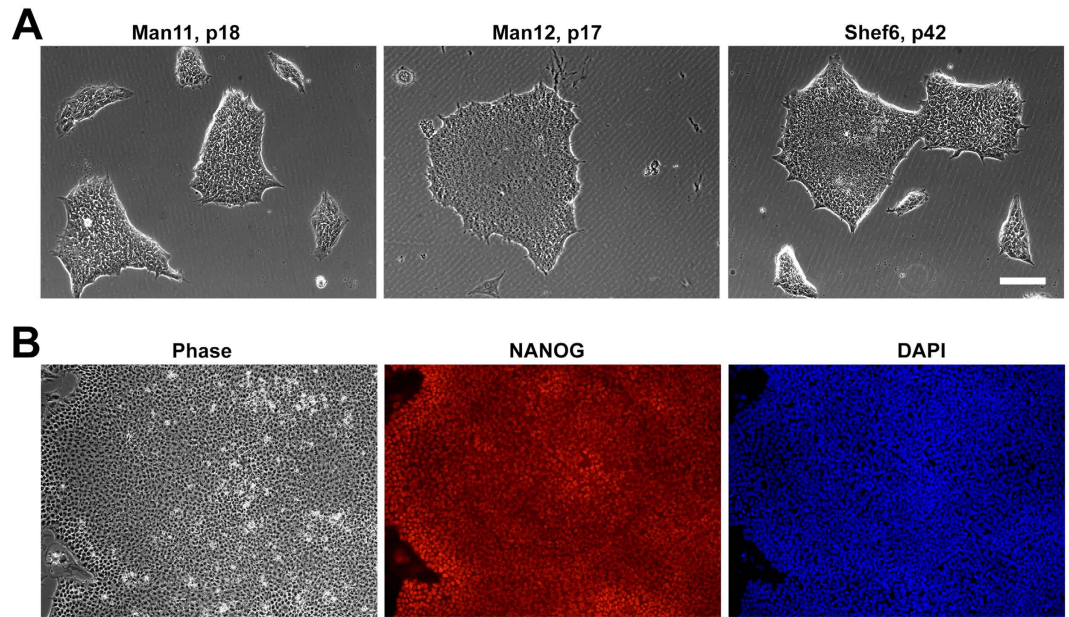


Figure 1. Culture of 3 clinical-grade hESC lines. (A) Man11, Man12, and Shef6 hESCs were cultured in Laminin-521 in Essential 8 medium prior to collection of genomic DNA. (B) Human ESC lines maintained expression of the pluripotent marker, NANOG, during expansion. Scale bar, 90 μm .

preimplantation genetic diagnosis⁴⁰. However, the vast majority of blastocysts, including all within the UK, are donated under conditions that prohibit access to parental DNA. An alternative method to determine if a particular CNV observed in a hESC cell line might be parent-of-origin is to compare it to known CNVs present on the Database of Genomic Variants (DGV)⁴¹. The DGV has catalogued a collection of published CNVs from over 14,300 healthy individuals. Although not exhaustive, the collection is highly curated and covers a significant number of CNVs and other genomic structural variants known to exist in the general population. However, if a hESC CNV is found to be present on this database it does not exclude the possibility that it is a *de novo* genomic alteration that arose during development of the blastocyst or during establishment and maintenance of the cell line.

As well as CNVs, copy-neutral loss of heterozygosity (CN-LOH) represent another form of genomic structural variation characterised by a stretch of homozygosity along part of a chromosome⁴². If the affected alleles contain recessive mutations or lie within regions of the genome subject to imprinting, there can be either a net loss or a net gain of gene function and expression⁴². CN-LOH regions can also be due to the presence of persistent ancestral recombination ‘cold spots’ or be the consequence of recent consanguinity^{43,44}. While these changes would be considered parent-of-origin if found in hESC lines, there are examples of somatic or acquired CN-LOH regions found during the progression of many cancers, particularly those of haematopoietic origin⁴⁵. Whole genome SNP arrays are useful to detect CN-LOH events instead of regions, and regions greater than 1 Mb in length warrant further investigation⁴².

In this study, we sought to examine the genetic integrity of 25 clinical-grade hESC lines utilising whole-genome SNP genotyping analysis. While karyology is sufficient for establishing genetic normalcy within current regulatory standards, advances in technology and an increasing cytogenetic knowledge base demand higher resolution investigation of cell lines and cell products designed for clinical use.

Results and Discussion

Human ES cell lines were cultured in feeder-free conditions prior to the isolation of genomic DNA (Fig. 1). The DNA from 25 hESC lines (Table 1) was assayed for single nucleotide polymorphisms (SNPs) using the Illumina HumanCytoSNP-12 array and data was analysed for large CNVs with GenomeStudio and KaryoStudio software. Our SNP analysis of 25 clinical-grade hESC lines found 15 unique CNVs greater than 100 kb and 3 CN-LOH regions greater than 1 Mb in size among 16 hESC lines, with results summarised in Table 2. Nine clinical-grade hESC lines did not harbour any structural genomic variants of this size. The percentage of cell lines we found to have CNVs greater than 100 kb (72%) is in agreement with the percentage of healthy individuals (~70%) in the population found to harbour CNVs of at least this size³⁹. Additionally, the percentage of cell lines with CN-LOH events between 2.5 and 5 Mb (12%) is similar to the percentage of individuals in outbred populations with CN-LOH of this size range⁴³. Since we have restricted our search to large structural changes, we are reporting a considerably lower number of CNVs and CN-LOH regions identified in other studies that have examined hESC or hiPSC lines^{33,36,46}. Approximately 5%–10% of the normal human genome contains CNVs averaging a few kilobases in

hESC Line	Passage	Detected Region	Variation	Start (bp) ¹	End (bp)	Length (kb)	# SNPs	Genes
KCL031	21	8q24.23	Loss ²	136718037	136837768	119.7	20	NONE
KCL032	7	5p14.3	Gain	19086546	21585311	2498.8	252	CDH18
KCL033	17	5p14.3	Gain	19031726	21440254	2408.5	256	CDH18
KCL033	17	12p11.21	Gain ²	31116366	31248444	132.1	19	NONE
KCL034	19	6p22.1	Gain	27627265	27958049	330.8	13	HIST1H2BL; HIST1H2AI; HIST1H3H; HIST1H2AJ; HIST1H2BM; HIST1H4J; HIST1H4K; HIST1H2AK; HIST1H2BN; HIST1H2AL; HIST1H1B; HIST1H3I; HIST1H4L; HIST1H3J; HIST1H2AM; HIST1H2BO; OR2B2; OR2B6
KCL037	8	18q23	Gain	78611768	79153453	541.7	84	SALL3; ATP9B
KCL040	21	2q11.1-11.2	CN-LOH	94871756	98412364	3540.6	345	TEKT4; MAL; MRPS5; ZNF514; ZNF2; PROM2; KCNIP3; FAHD2A; TRIM43; ANKRD36C; GPAT2; ADRA2B; ASTL; DUSP2; STARD7; TMEM127; CIAO1; SNRNP200; ITPRIPL1; NCAPI; NEURL3; ARID5A; KANSL3; FER1L5; LMAN2L; CNNM4; CNNM3; ANKRD23; ANKRD39; SEMA4C; FAM178B; FAHD2B; ANKRD36; ANKRD36B; COX5B; ACTR1B; ZAP70; TMEM131; VWA3B; CNGA3
KCL040	21	12p11.21	Gain ²	31116366	31248444	132.1	19	NONE
KCL040	21	16p11.2	Loss ²	32491547	33993220	1501.7	34	TP53TG3; TP53TG3C; TP53TG3B
Man11	21	15q25.3	Gain ²	85376921	85597560	220.6	39	AKAP13
MasterShef2	18	17q21.31	Gain ²	46138530	46710944	572.4	22	KANSL1; LRRC37A; ARL17B; LRRC37A2; ARL17A; NSF
MasterShef3	22	6q27	Gain ²	167908790	168175598	266.8	59	MLLT4; KIF25; FRMD1
MasterShef3	22	17p11.2	Gain	21358248	21593333	235.1	31	KCNJ12; C1orf51
MasterShef5	37	12q21.31-21.33	CN-LOH	85929477	89347087	3417.6	397	MGAT4C; C12orf50; C12orf29; CEP290; TMTCC3; KITLG
MasterShef7	16	14q21.3	Gain	46731743	47047175	315.4	18	MDGA2
MasterShef7	16	16p11.2	Gain	29672266	30188484	516.2	94	QPRT; C16orf54; ZG16; KIF22; MAZ; PRRT2; PAGR1; MVP; CDIPT; SEZ6L2; ASPHD1; KCTD13; TMEM219; TAOK2; HIRIP3; INO80E; DOC2A; C16orf92; FAM57B; ALDOA; PPP4C; TBX6; YPEL3; GDDP3; MAPK3; CORO1A
MasterShef11	17	19p12	Loss ^{2,3}	20423851	20532555	108.7	9	NONE
Shef6	45	8p22	Gain	14634612	15188066	553.5	93	SGCZ
RC9	17	8q24.23	Loss ²	136718037	136837768	119.7	20	NONE
RC11	18	2p16.2-16.1	CN-LOH	53624707	57243565	3618.9	499	GPR75-ASB3; CHAC2; ERLEC1; GPR75; PSME4; ACYP2; TSPYL6; C2orf73; SPTBN1; EML6; RTN4; CLHC1; RPS27A; MTIF2; CCDC88A; CFAP36; SMEK2; PNPT1; EFEMP1; CCDC85A
RC17	17	12p13.31	Gain ²	7847740	7992065	144.3	20	SLC2A14; SLC2A3
KCL038	9	NONE						
KCL039	8	NONE						
Man12	20	NONE						
MasterShef4	35	NONE						
MasterShef8	19	NONE						
MasterShef10	22	NONE						
MasterShef12	16	NONE						
MasterShef13	11	NONE						
MasterShef14	13	NONE						

Table 2. Summary of SNP array analysis of clinical-grade hESC lines. ¹Nucleotide numbers refer to Human Genome Build 38. ²denotes that the frequency of this CNV in the human population has been estimated (Supplementary Table S2). ³denotes a homozygous deletion.

length⁴⁷, and high resolution arrays can produce large data sets dominated by such naturally occurring small events^{48,49}. Thus, we chose to use the HumanCytoSNP-12 array and KaryoStudio software, tailored to identify CNVs greater than 75 kb and CN-LOH regions greater than 1 MB, a resolution adequate for common molecular cytogenetic interpretation and applicable in a clinically relevant setting^{42,49-51}.

Of the 15 unique CNVs detected, 12 were heterozygous duplications, 2 were heterozygous deletions, and 1 was a homozygous deletion (Table 2). We asked whether these structural genomic variants were

likely to be parent-of-origin CNVs, that is, naturally occurring, or if they could have arisen during the hESC derivation process or during expansion in culture. We first checked each CNV on the DGV (<http://dgv.tcag.ca>) to determine whether the CNVs have been previously observed in healthy individuals^{41,52}.

Amongst the 15 large hESC CNVs, we found 10 had clear evidence of being present in healthy individuals. For example, a duplication of 267 kb on chromosome 6q27 observed in MasterShef3 containing 3 protein-encoding genes—*MLLT4*, *KIF25*, *FRMD1*—was represented on the DGV and has been reported in the healthy population at a frequency of over 1 in 50 individuals (Fig. 2A)^{48,51,53}. RC17 hESCs harboured a single 144 kb duplication on chromosome 12p13.31 encompassing the *SLC2A14* and *SLC2A3* genes (Fig. 2B). Although this is close to the *NANOG* locus, we do not believe it confers a growth advantage since this CNV is commonly found (1 in 25) in healthy individuals^{39,51,54}. A 132 kb duplication on chromosome 12p11.21 was detected in both KCL033 and KCL040 hESC lines (Supplementary Fig. S1). This region does not contain any protein-coding genes, and there are at least 14 submissions of this duplication on the DGV^{39,51,53–55}. Man11, MasterShef2, and MasterShef7 also harboured genomic duplications of greater than 100 kb that are represented on the DGV (Supplementary Fig. S1). Man11 harboured a 220 kb gain on chromosome 15q25.3 that has been reported several times^{39,51,56}. This duplication contains one gene, *AKAP13*, and this CNV was not found in the sibling hESC line, Man12. One of the CNVs detected in MasterShef7, a 315 kb duplication present on chromosome 14q21.3, contains a single gene, *MDGA*, and this CNV is also present on the DGV⁵¹. A 572 kb gain on chromosome 17q21.31 encompassing 5 genes in MasterShef2 was also found to be present in the normal population at high frequency (9.8%)⁵³.

Both heterozygous deletions and the homozygous deletion were found to be naturally occurring in the human population. Two unrelated cell lines, KCL031 and RC9 hESCs harboured the same 120 kb deletion on chromosome 8q24.23 (Fig. 3). This CNV is estimated to have a frequency of about 1 in 26 people and has been reported numerous times to occur in healthy individual^{39,48,51,53,55,56}. This region does not contain any protein-coding genes. KCL040 and MasterShef11 also possessed genomic deletions greater than 100 kb that were present on the DGV (Supplementary Fig. S2). KCL040 harbours a previously reported 1.5 Mb deletion on chromosome 16p11.2 that contains 3 related genes^{56,57}. MasterShef11 has a 109 kb homozygous deletion on chromosome 19p12 that has been widely reported to occur in healthy individuals (~1 in 9) and does not contain any genes^{39,48,51,55,56}.

We identified a novel 2.4 Mb gain on chromosome 5p14.3, containing a single gene, *Cadherin-18*, that was present in two sibling cell lines, KCL032 and KCL033 (Fig. 4), but not in KCL034, a third sibling line^{20,58}. A duplication of this size has not been reported to date, but its presence in two sibling hESC lines strongly suggests it was inherited from one of the parents of the donated blastocysts rather than by acquisition of an identical CNV during hESC derivation and culture.

The remaining 5 CNVs, all duplications, were not fully represented on the DGV. For example, a 516 kb duplication was detected on chromosome 16 in MasterShef7 hESCs that encompassed over 20 genes (Fig. 5). A similarly sized duplication of this region has not been reported to date, but the DGV is not exhaustive and this CNV may represent a novel, but rare naturally-occurring genomic variant. This duplication is not known to confer a selective growth advantage, and has not been reported to be associated with hESC culture adaptation³⁶. We also checked this CNV on the DECIPHER database⁵⁹ of microdeletion and microduplication clinical syndromes to determine if it was associated with a known disorder. This CNV was not associated with a described clinical syndrome, nor were any of the other 14 CNVs identified here.

The four other unique CNVs that were not fully represented on the DGV were present in KCL034, KCL037, MasterShef3, and Shef6 hESC lines (Supplementary Fig. S3). KCL034 harboured a duplication of a 331 kb region on chromosome 6 (chr6q22.1) that contained part of the Histone 1 gene cluster. While this region was not fully present on the DGV, it is probable that this gain represents a benign event as other histone clusters have been shown to be preferentially duplicated during evolution⁶⁰. A 542 kb gain on chromosome 18q23 in KCL037 containing two coding genes, *SALL3* and *ATP9B*, has not been previously reported. However, a smaller duplication covering the same two genes has been observed⁵¹. A 235 kb duplication was detected on chromosome 17 in MasterShef3 hESCs. Although, a duplication of this size is not present on the DGV, four slightly smaller duplications of the region have been reported^{39,51,53,55}. A 553 kb gain on chromosome 8p22 in Shef6 hESCs within an intron of the *SGCZ* gene is an unreported novel structural duplication, but a deletion of this region has been observed⁵¹. While the 5 novel CNVs detected in our study were not fully present on the DGV, they were also not on the 'ESC-associated' culture-adaptation list of CNVs from the International Stem Cell Initiative survey of 125 different hESC and hiPSC lines³⁶. Based on the available evidence, these CNVs likely represent novel, but rare, structural variants found in the human population. However, we do not know the health status of the individuals that may harbour these novel CNVs, so we cannot assume they are benign. Furthermore, we cannot definitively exclude the possibility that these CNVs arose during blastocyst development or during the early stages of hESC line derivation.

In addition to the 15 CNVs identified, our analysis detected 3 regions of CN-LOH greater than 1 MB among three different hESC lines, KCL040, MasterShef5, and RC11 (Table 2 and Fig. 6). All three regions ranged in size between 3.4 and 3.7 Mb, two of which were on chromosome 2 and the other on chromosome 12. Due to their interstitial nature and relatively small genetic size, it is unlikely any of these CN-LOH regions would represent examples of acquired CN-LOH. The vast majority of CN-LOH events

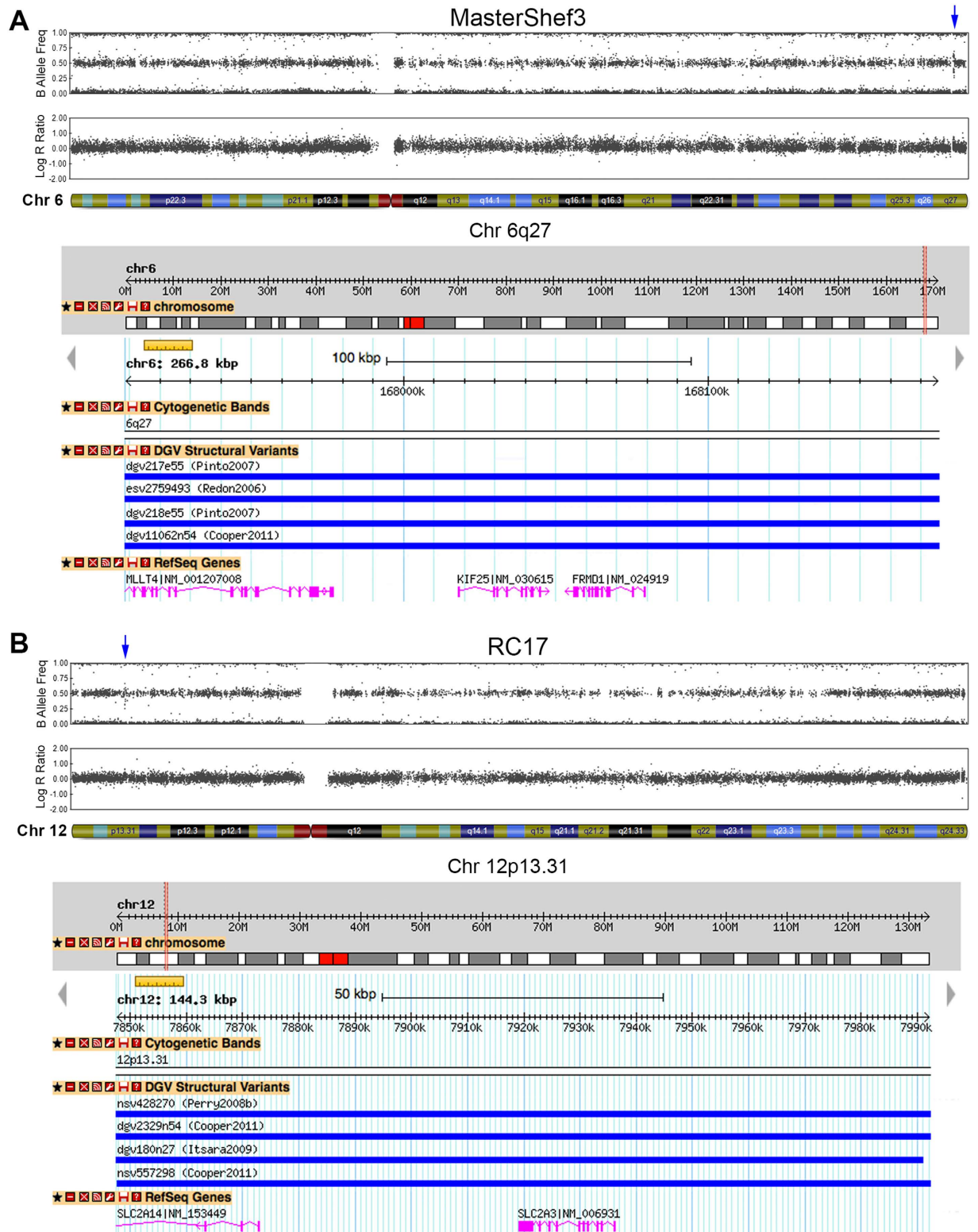


Figure 2. Duplications found in hESC lines that are present on the DGV. (A) Chromosome 6 ideograms from SNP array analysis of MasterShef3 revealed a 267 kb duplication near the telomere, which contained 3 genes, *MLLT4*, *KIF25*, and *FRMD1*. Duplications of this size, or greater, have been reported and annotated on the DGV with an estimated frequency of 2.82% in the human population. **(B)** A 144 kb duplication was observed on chromosome 12p13.31 of RC17 hESCs. This region contained two genes, *SCL2A14* and *SLC2A3*, and is represented on the DGV (3.9% frequency in humans).

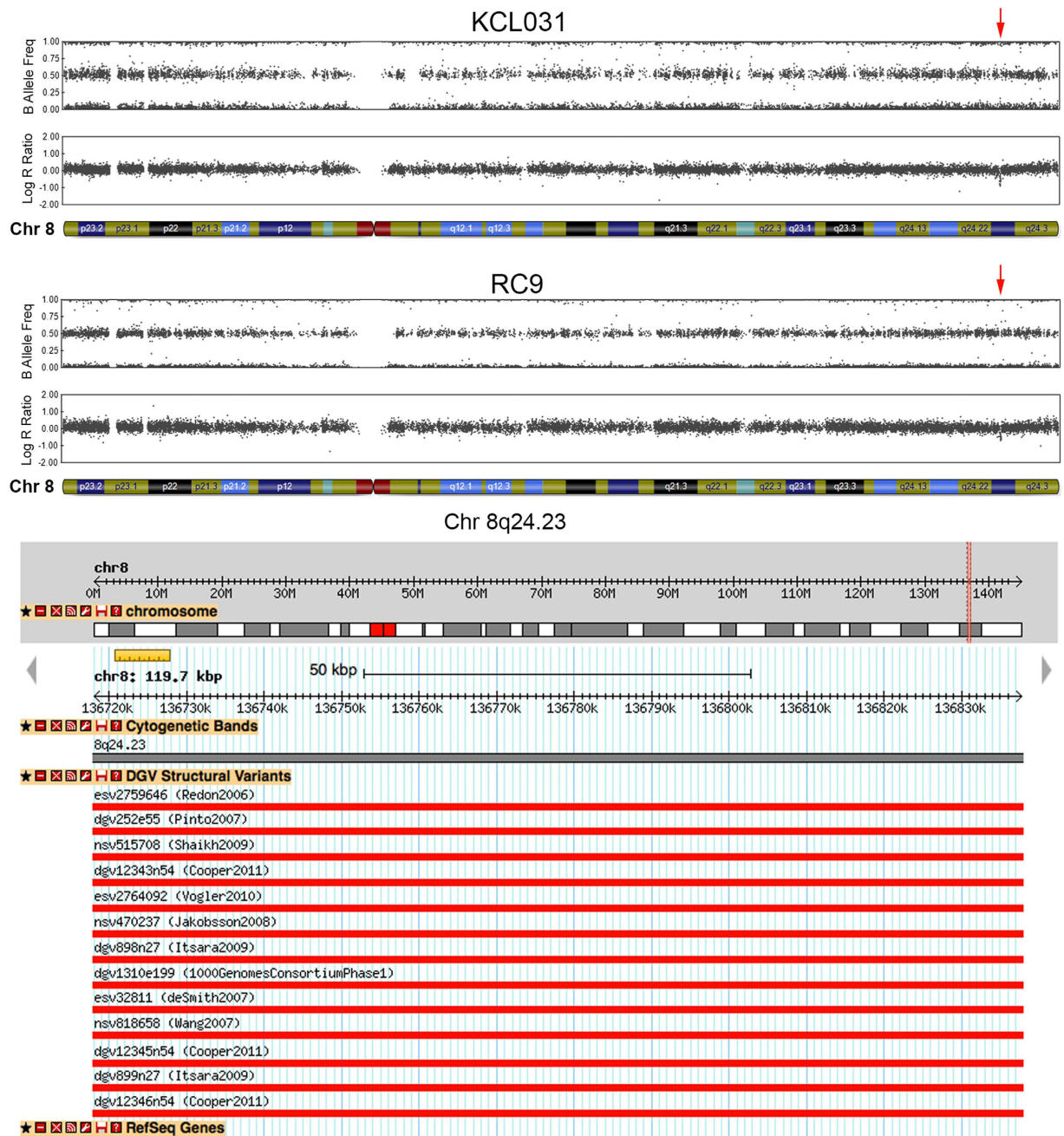


Figure 3. A common deletion observed in two unrelated hESC lines. Chromosome 8 ideograms from SNP array analysis of KCL031 and RC9 hESC lines revealed a 120 kb deletion on chromosome 8q24.23 (red arrow). This deletion is relatively common in the human population (3.85%), and does not contain any protein-coding genes.

documented in cancers are telomeric in nature and while examples of acquired interstitial CN-LOH do exist^{61,62}, the double recombination event required to achieve this would be difficult to explain for sizes less than 25 Mb^{63,64}. Since hESCs are known to maintain monoallelic expression in some imprinted regions⁶⁵, we cross-referenced the 3 CN-LOH regions we identified to the Genomic Imprinting database (<http://www.geneimprint.com>)⁶⁶. None of the CN-LOH regions reside in known imprinted regions, although *CCDC85A* in the CN-LOH of RC11 is predicted, but not validated, to be an imprinted gene on this database.

While none of the CNV and CN-LOH regions observed in the hESCs appear to harbour genomic anomalies associated with culture adaptation at the passages reported here (Table 2), we have detected the presence of the culture-adapted microduplication on chromosome 20q11.21 at higher passages of 4

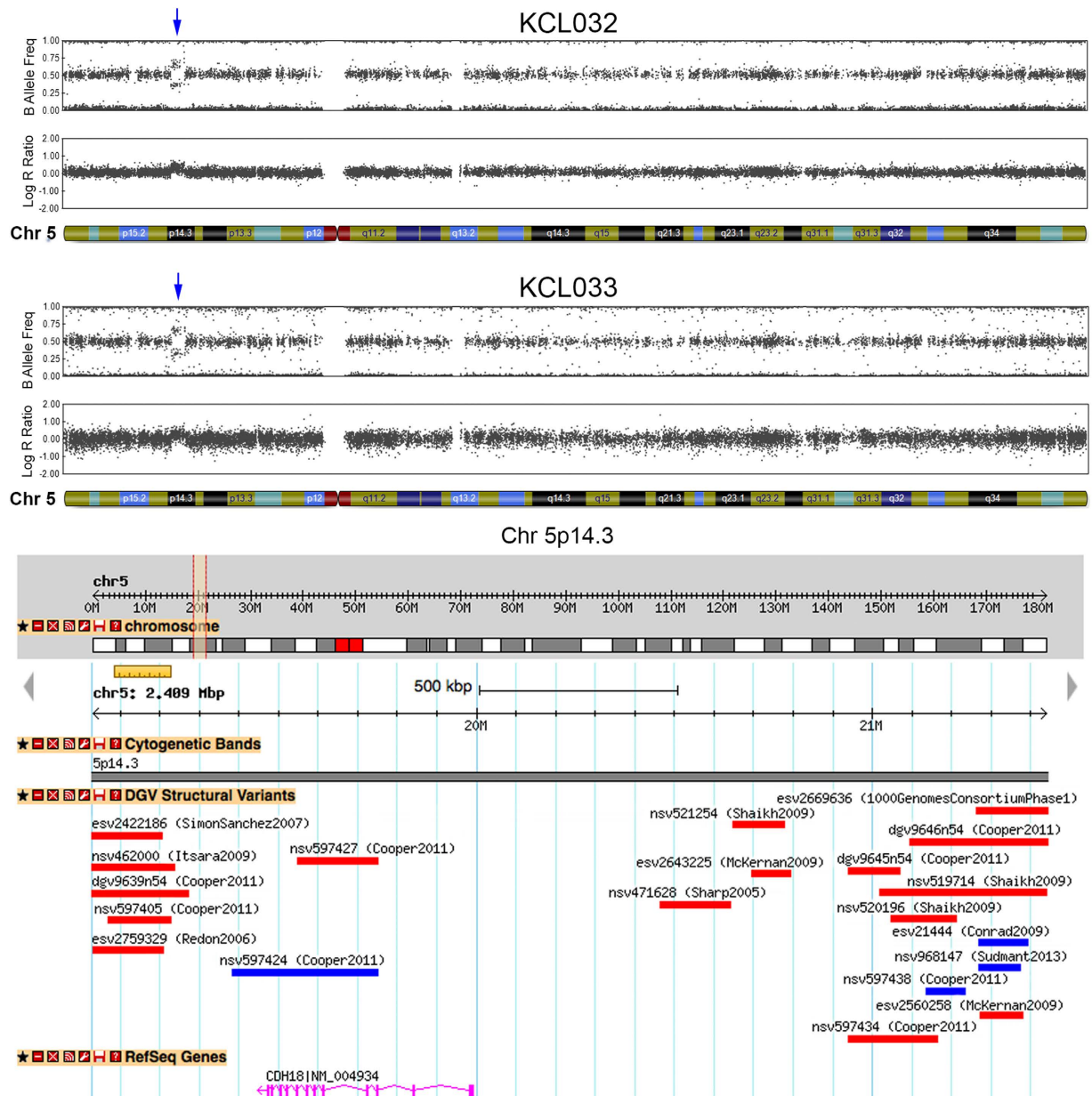


Figure 4. An identical duplication found in sibling KCL hESC lines, but not present on the DGV.

Chromosome 5 ideograms from SNP array analysis of KCL032 and KCL033 hESC lines with the common CNV indicated by blue arrows. This 2.4 Mb duplication on chromosome 5p14.3 included the *CDH18* gene. A duplication of this size was not present on the DGV, but a smaller duplication (nsv597424) covering most of the *CDH18* exons was present, and a number of smaller deletions have been observed in this region. Only published CNVs greater than 100 kb are represented here.

clinical-grade hESC lines. This microduplication was reported to be found in ~20% of research-grade hESC lines^{36,37}. Thus, it is with prudence that each cell line should be re-evaluated frequently and certainly before the production of any differentiated cell product⁶⁷. These results also illustrate that the heterogeneity of molecular karyotypes in the human population will be reflected in the cell lines produced from human embryos. A perfect genome is unlikely to exist, so an appreciation of human genomic diversity will lend itself to a more measured interpretation of molecular karyotype and genome sequencing data of cell lines destined for clinical use.

Our molecular karyotypic evaluation of 25 clinical-grade hESC lines has established a valuable platform for the development and manufacture of cell therapy products for clinical application in regenerative medicine.

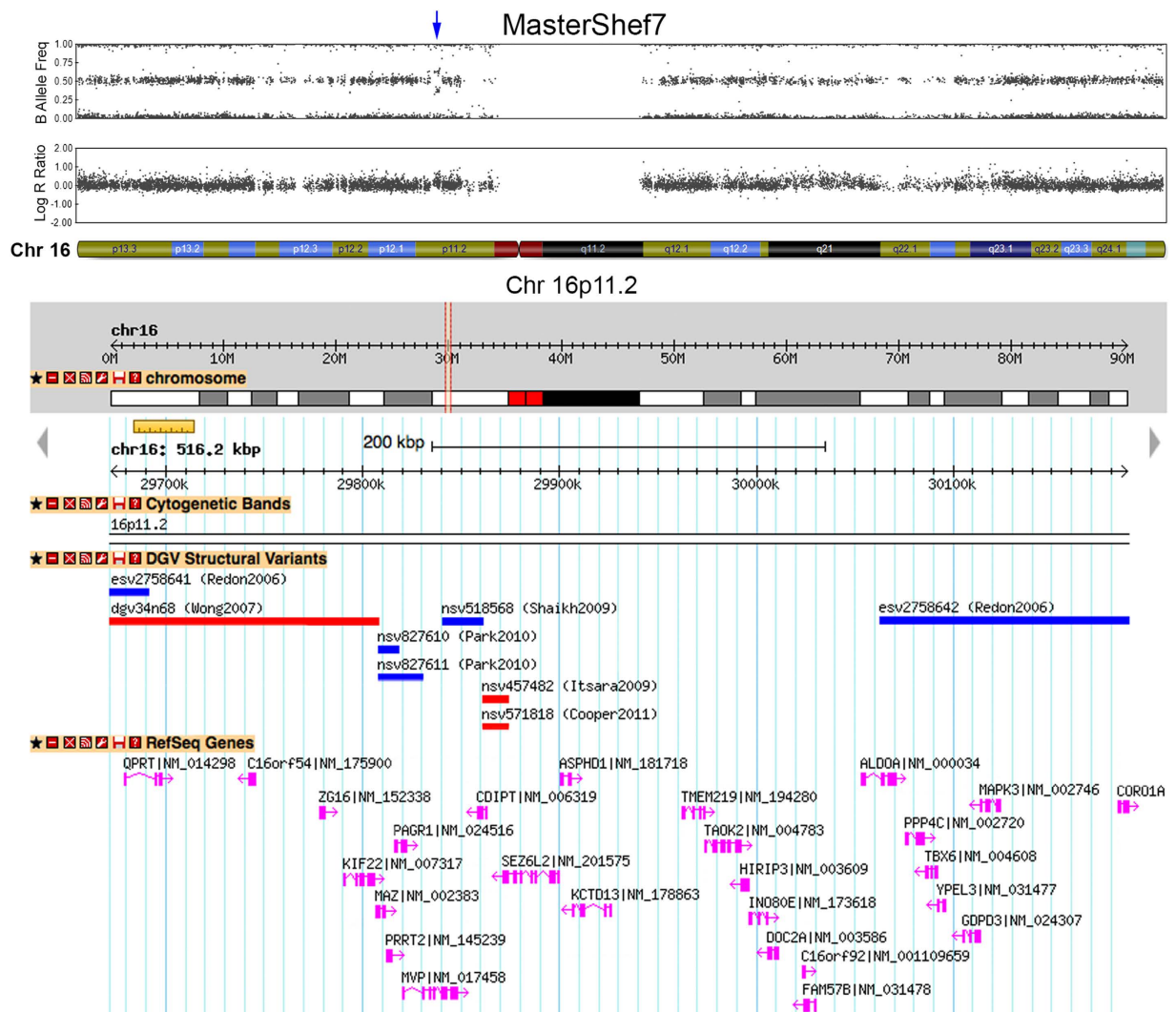


Figure 5. A novel duplication observed in MasterShef7. A 516 kb duplication on chromosome 16p11.2 was detected in MasterShef7 by SNP array analysis. This region contained 26 protein-coding genes, and a duplication of this size has not been reported to date. Smaller duplications have been observed in this region, including a duplication (esv2758642) spanning 7 of the genes. Only published CNVs greater than 10 kb are represented here.

Materials and Methods

Clinical-grade hESC Samples. Approval for the use of all hESC lines used in this study was granted by the MRC Steering Committee for the UK Stem Cell Bank and for the Use of Stem Cell Lines. The following clinical-grade hESC lines were kindly provided by the following derivation centres: The University of Sheffield (12 lines) MasterShef2, MasterShef3, MasterShef4, MasterShef5, MasterShef7, MasterShef8, MasterShef10, MasterShef11, MasterShef12, MasterShef13, MasterShef14 and Shef6; King's College London (8 lines) KCL031, KCL032, KCL033, KCL034, KCL037, KCL038, KCL039, and KCL040; Roslin Cells Ltd (3 lines) RC9, RC11, and RC17; and Central Manchester NHS Foundation Trust/The University of Manchester (2 lines) Man11 and Man12. Most of the cell samples were provided as frozen cell pellets, which were directly processed for genomic DNA isolation. However, Man11 and Man12, sibling hESC lines, were provided as cryopreserved hESC lines, and Shef6 was obtained directly from the UK Stem Cell Bank (UKSCB Accession No. R-05-031). These three lines were thawed and cultured in Essential 8 media (Life Technologies) on Laminin-521 substrate (Biolamina) for less than 10 passages before pelleting by centrifugation for genomic DNA isolation. Human ES cell morphology and pluripotent marker, NANOG, expression were maintained during this expansion (Fig. 1). NANOG immunostaining was performed with anti-NANOG antibody (1:500) from R&D Systems (cat no. AF1997).

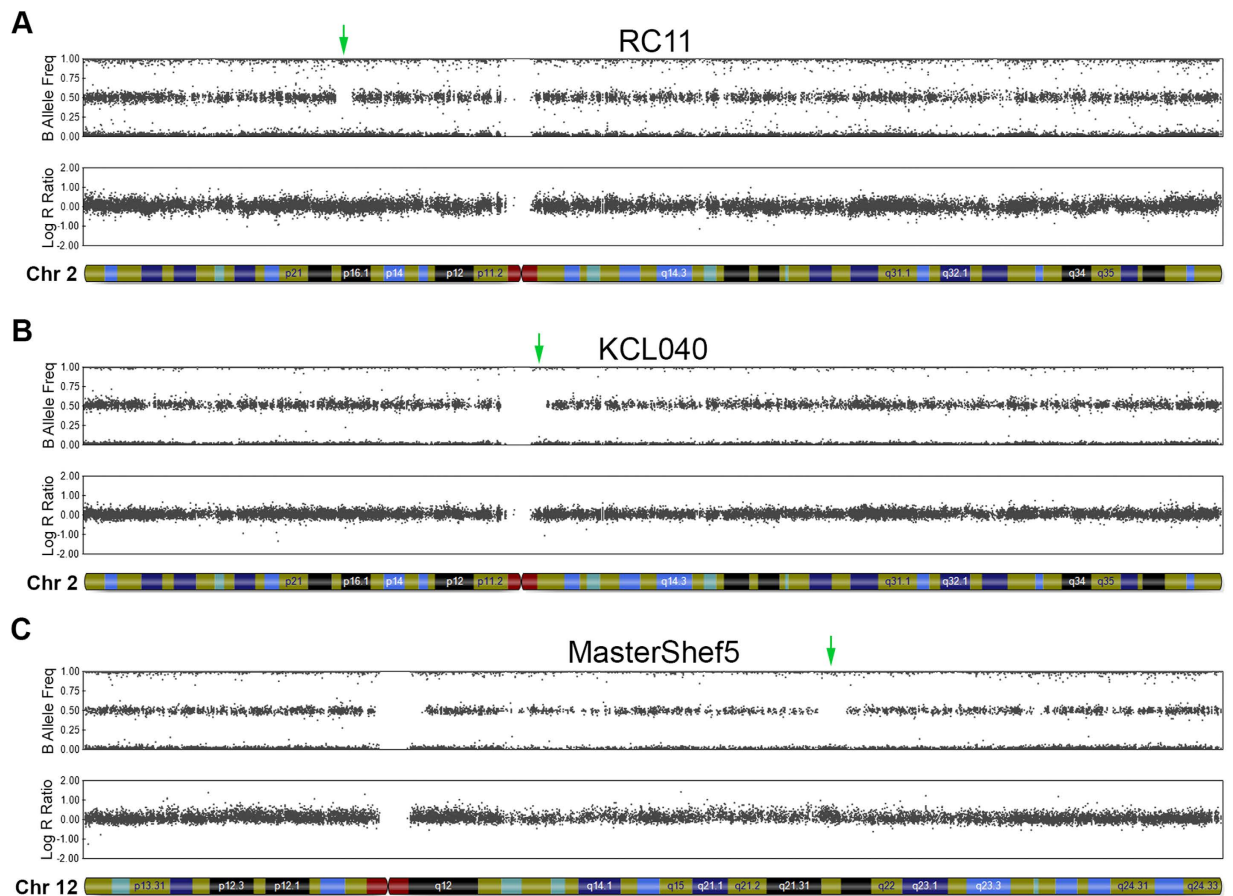


Figure 6. Interstitial CN-LOH regions detected in clinical-grade hESC lines. Chromosome ideograms from SNP array analysis showing CN-LOH regions indicated by green arrows: (A) A 3.6 Mb region on chromosome 2p16.2-16.1 in RC11. (B) A 3.5 Mb region on chromosome 2q11.1-11.2 in KCL040. (C) A 3.4 Mb region around chromosome 12q21.31-21.33 in MasterShef5.

Isolation of Genomic DNA. Genomic DNA was isolated from cell pellets using the MasterPure™ Complete DNA and RNA Purification Kit (Epicentre) according to the manufacturer's instructions. Briefly, cell pellets were lysed with Tissue and Cell Lysis Solution, followed by Proteinase K and RNase A treatment. Proteins were precipitated with MPC Protein Precipitation Reagent and removed by centrifugation. Genomic DNA was precipitated with isopropanol, pelleted by centrifugation and then resuspended in TE buffer to a final concentration of 50 ng/μl. Purity was checked by spectrophotometry using the NanoDrop 1000 spectrophotometer (Thermo Fisher Scientific).

HLA typing. All samples were subjected to HLA typing at the Histocompatibility and Immunogenetics (H&I) Laboratory of the Scottish National Blood Transfusion Service (SNBTS). The HLA typing data (Supplementary Table S1) was used for identification purposes by comparing it to the HLA typing data for each cell line provided by the hESC derivation centres. The H&I Laboratory at SNBTS is accredited through Clinical Pathology Accreditation (UK) Ltd (CPA), and all CPA labs are subjected to UK National External Quality Assessment Schemes (UK NEQAS).

Genotyping and Analysis. Genomic DNA samples were assayed using the Illumina HumanCytoSNP-12 v2.1 BeadChip, at either AROS (Aarhus, Denmark) or the Wellcome Trust Clinical Research Facility (Edinburgh, UK). The data have been deposited in NCBI's Gene Expression Omnibus and are accessible through GEO Series accession number GSE68508. Genotyping was initially assessed using GenomeStudio genotyping module (v1.94, Illumina). KaryoStudio (v1.4, Illumina) was employed to perform automatic normalisation and to identify genomic aberrations utilising default settings of the built-in cnvPartition algorithm (3.07, Illumina) to generate B-allele frequency and smoothed Log R ratio plots for detected regions. These parameters are designed to detect CNVs greater than 75 kb and CN-LOH regions larger than 1 MB with a confidence value greater than 35. All identified duplication and deletions were first cross-matched to the Database of Genomic Variants (DGV; <http://dgv.tcag.ca>) to identify naturally-occurring structural variations in the human genome^{41,52}. We also determined the

estimated frequency of 8 common CNVs in the human population (Supplementary Table S2) by accessing the DGV Gold Standard track of a highly curated and accurate CNV map of the human genome⁴⁷. All CNVs were inputted into the DECIPHER database (<https://decipher.sanger.ac.uk/>) to determine if they were associated with any clinical syndromes⁵⁹. The CN-LOH regions were cross-referenced with the Genomic Imprinting database (<http://www.geneimprint.com>) to determine if the genomic variants occurred in known imprinted regions⁶⁶. CNVs that were not identified on the DGV were then checked against a list of ES cell-associated culture adaptation genomic variants published by the International Stem Cell Initiative³⁶.

References

- Thomson, J. A. *et al.* Embryonic stem cell lines derived from human blastocysts. *Science* **282**, 1145–1147 (1998).
- Takahashi, K. *et al.* Induction of pluripotent stem cells from adult human fibroblasts by defined factors. *Cell* **131**, 861–872 (2007).
- Unger, C., Skottman, H., Blomberg, P., Sirac Dilber, M. & Hovatta, O. Good manufacturing practice and clinical-grade human embryonic stem cell lines. *Hum. Mol. Genet.* **17**, R48–R53 (2008).
- Fraga, A. M., Souza de Araújo, É. S., Stabellini, R., Vergani, N. & Pereira, L. V. A survey of parameters involved in the establishment of new lines of human embryonic stem cells. *Stem Cell Rev and Rep* **7**, 775–781 (2011).
- Ludwig, T. E. *et al.* Derivation of human embryonic stem cells in defined conditions. *Nat. Biotechnol.* **24**, 185–187 (2006).
- Rajala, K. *et al.* A defined and xeno-free culture method enabling the establishment of clinical-grade human embryonic, induced pluripotent and adipose stem cells. *PLoS ONE* **5**, e10246 (2010).
- Chen, G. *et al.* Chemically defined conditions for human iPSC derivation and culture. *Nat. Methods* **8**, 424–429 (2011).
- Prathalingam, N. *et al.* Production and validation of a good manufacturing practice grade human fibroblast line for supporting human embryonic stem cell derivation and culture. *Stem Cell Res Ther* **3**, 12 (2012).
- Richards, M., Fong, C.-Y., Chan, W.-K., Wong, P.-C. & Bongso, A. Human feeders support prolonged undifferentiated growth of human inner cell masses and embryonic stem cells. *Nature biotechnology* **20**, 933–936 (2002).
- Ellerström, C. *et al.* Derivation of a xeno-free human embryonic stem cell line. *Stem Cells* **24**, 2170–2176 (2006).
- Rodin, S. *et al.* Clonal culturing of human embryonic stem cells on laminin-521/E-cadherin matrix in defined and xeno-free environment. *Nat Commun* **5**, (2014).
- Rodin, S. *et al.* Long-term self-renewal of human pluripotent stem cells on human recombinant laminin-511. *Nat. Biotechnol.* **28**, 611–615 (2010).
- Nakagawa, M. *et al.* A novel efficient feeder-free culture system for the derivation of human induced pluripotent stem cells. *Sci Rep* **4**, (2014).
- Lu, H. F. *et al.* A defined xeno-free and feeder-free culture system for the derivation, expansion and direct differentiation of transgene-free patient-specific induced pluripotent stem cells. *Biomaterials* **35**, 2816–2826 (2014).
- Ström, S. *et al.* Mechanical isolation of the inner cell mass is effective in derivation of new human embryonic stem cell lines. *Hum. Reprod.* **22**, 3051–3058 (2007).
- Ström, S., Holm, F., Bergström, R., Strömberg, A.-M. & Hovatta, O. Derivation of 30 human embryonic stem cell lines—improving the quality. *In Vitro Cell. Dev. Biol. Anim.* **46**, 337–344 (2010).
- Hovatta, O. Derivation of human embryonic stem cell lines, towards clinical quality. *Reprod. Fertil. Dev.* **18**, 823–828 (2006).
- Turetsky, T. *et al.* Laser-assisted derivation of human embryonic stem cell lines from IVF embryos after preimplantation genetic diagnosis. *Human Reproduction* **23**, 46–53 (2008).
- Liu, W. *et al.* Derivation and characterization of human embryonic stem cell lines from poor quality embryos. *J Genet Genomics* **36**, 229–239 (2009).
- Jacquet, L. *et al.* Strategy for the creation of clinical grade hESC line banks that HLA-match a target population. *EMBO Mol Med* **5**, 10–17 (2012).
- Hewitt, Z. A., Amps, K. J. & Moore, H. D. Derivation of GMP raw materials for use in regenerative medicine: hESC-based therapies, progress toward clinical application. *Clin. Pharmacol. Ther.* **82**, 448–452 (2007).
- Tannenbaum, S. E. *et al.* Derivation of xeno-free and GMP-grade human embryonic stem cells—platforms for future clinical applications. *PLoS ONE* **7**, e35325 (2012).
- Crook, J. M. *et al.* The Generation of Six Clinical-Grade Human Embryonic Stem Cell Lines. *Cell Stem Cell* **1**, 490–494 (2007).
- Murdoch, A. *et al.* The procurement of cells for the derivation of human embryonic stem cell lines for therapeutic use: recommendations for good practice. *Stem Cell Reviews and Reports* **8**, 91–99 (2011).
- Osafune, K. *et al.* Marked differences in differentiation propensity among human embryonic stem cell lines. *Nat. Biotechnol.* **26**, 313–315 (2008).
- Baker, D. E. C. *et al.* Adaptation to culture of human embryonic stem cells and oncogenesis *in vivo*. *Nat. Biotechnol.* **25**, 207–215 (2007).
- Taylor, C. J. *et al.* Banking on human embryonic stem cells: estimating the number of donor cell lines needed for HLA matching. *Lancet* **366**, 2019–2025 (2005).
- Turner, M. *et al.* Toward the development of a global induced pluripotent stem cell library. *Cell Stem Cell* **13**, 382–384 (2013).
- Bock, C. *et al.* Reference Maps of human ES and iPS cell variation enable high-throughput characterization of pluripotent cell lines. *Cell* **144**, 439–452 (2011).
- Stephenson, E. *et al.* Safety paradigm: genetic evaluation of therapeutic grade human embryonic stem cells. *Journal of The Royal Society Interface* **7**, S677–S688 (2010).
- Lee, A. S., Tang, C., Rao, M. S., Weissman, I. L. & Wu, J. C. perspective. *Nat. Med.* **19**, 998–1004 (2013).
- Draper, J. S. *et al.* Recurrent gain of chromosomes 17q and 12 in cultured human embryonic stem cells. *Nat. Biotechnol.* **22**, 53–54 (2004).
- Närvä, E. *et al.* High-resolution DNA analysis of human embryonic stem cell lines reveals culture-induced copy number changes and loss of heterozygosity. *Nat. Biotechnol.* **28**, 371–377 (2010).
- Spits, C. *et al.* Recurrent chromosomal abnormalities in human embryonic stem cells. *Nat. Biotechnol.* **26**, 1361–1363 (2008).
- Lefort, N. *et al.* Human embryonic stem cells reveal recurrent genomic instability at 20q11.21. *Nat. Biotechnol.* **26**, 1364–1366 (2008).
- Amps, K. *et al.* Screening ethnically diverse human embryonic stem cells identifies a chromosome 20 minimal amplicon conferring growth advantage. *Nat. Biotechnol.* **29**, 1132–1144 (2011).
- Avery, S. *et al.* BCL-XL Mediates the Strong Selective Advantage of a 20q11.21 Amplification Commonly Found in Human Embryonic Stem Cell Cultures. *Stem Cell Reports* **1**, 379–386 (2013).
- Laurent, L. C. *et al.* Dynamic Changes in the Copy Number of Pluripotency and Cell Proliferation Genes in Human ESCs and iPSCs during Reprogramming and Time in Culture. *Cell Stem Cell* **8**, 106–118 (2011).

39. Itsara, A. *et al.* Population analysis of large copy number variants and hotspots of human genetic disease. *Am. J. Hum. Genet.* **84**, 148–161 (2009).
40. Ben-Yosef, D. *et al.* Genomic Analysis of hESC Pedigrees Identifies *De Novo* Mutations and Enables Determination of the Timing and Origin of Mutational Events. *Cell Rep* **4**, 1288–1302 (2013).
41. MacDonald, J. R., Ziman, R., Yuen, R. K. C., Feuk, L. & Scherer, S. W. The Database of Genomic Variants: a curated collection of structural variation in the human genome. *Nucleic Acids Res.* **42**, D986–92 (2014).
42. Kearney, H. M., Kearney, J. B. & Conlin, L. K. Diagnostic implications of excessive homozygosity detected by SNP-based microarrays: consanguinity, uniparental disomy, and recessive single-gene mutations. *Clin. Lab. Med.* **31**, 595–613–ix (2011).
43. McQuillan, R. *et al.* Runs of Homozygosity in European Populations. *The American Journal of Human Genetics* **83**, 359–372 (2008).
44. Gibson, J., Morton, N. E. & Collins, A. Extended tracts of homozygosity in outbred human populations. *Hum. Mol. Genet.* **15**, 789–795 (2006).
45. Makishima, H. & Maciejewski, J. P. Pathogenesis and consequences of uniparental disomy in cancer. *Clin. Cancer Res.* **17**, 3913–3923 (2011).
46. Hussein, S. M. *et al.* Copy number variation and selection during reprogramming to pluripotency. *Nature* **470**, 58–62 (2012).
47. Zarrei, M., MacDonald, J. R., Merico, D. & Scherer, S. W. A copy number variation map of the human genome. *Nat. Rev. Genet.* **16**, 172–183 (2015).
48. Redon, R. *et al.* Global variation in copy number in the human genome. *Nature* **444**, 444–454 (2006).
49. Bernardini, L. *et al.* High-resolution SNP arrays in mental retardation diagnostics: how much do we gain? *Eur. J. Hum. Genet.* **18**, 178–185 (2010).
50. Vermeesch, J. R. *et al.* Guidelines for molecular karyotyping in constitutional genetic diagnosis. *Eur. J. Hum. Genet.* **15**, 1105–1114 (2007).
51. Cooper, G. M. *et al.* A copy number variation morbidity map of developmental delay. *Nat. Genet.* **43**, 838–846 (2011).
52. Iafrate, A. J. *et al.* Detection of large-scale variation in the human genome. *Nat. Genet.* **36**, 949–951 (2004).
53. Pinto, D., Marshall, C., Feuk, L. & Scherer, S. W. Copy-number variation in control population cohorts. *Hum. Mol. Genet.* **16** Spec No. 2, R168–73 (2007).
54. Perry, G. H. *et al.* Copy number variation and evolution in humans and chimpanzees. *Genome Res.* **18**, 1698–1710 (2008).
55. Vogler, C. *et al.* Microarray-based maps of copy-number variant regions in European and sub-Saharan populations. *PLoS ONE* **5**, e15246 (2010).
56. Shaikh, T. H. *et al.* High-resolution mapping and analysis of copy number variations in the human genome: a data resource for clinical and research applications. *Genome Res.* **19**, 1682–1690 (2009).
57. de Smith, A. J. *et al.* Array CGH analysis of copy number variation identifies 1284 new genes variant in healthy white males: implications for association studies of complex diseases. *Hum. Mol. Genet.* **16**, 2783–2794 (2007).
58. Devito, L. *et al.* Cost-effective master cell bank validation of multiple clinical-grade human pluripotent stem cell lines from a single donor. *Stem Cells Transl Med* **3**, 1116–1124 (2014).
59. Firth, H. V. *et al.* DECIPHER: Database of Chromosomal Imbalance and Phenotype in Humans Using Ensembl Resources. *Am. J. Hum. Genet.* **84**, 524–533 (2009).
60. Braastad, C. D., Hovhannisyanyan, H., van Wijnen, A. J., Stein, J. L. & Stein, G. S. Functional characterization of a human histone gene cluster duplication. *Gene* **342**, 35–40 (2004).
61. Gupta, M. *et al.* Novel regions of acquired uniparental disomy discovered in acute myeloid leukemia. *Genes Chromosomes Cancer* **47**, 729–739 (2008).
62. Stephens, K. *et al.* Interstitial uniparental isodisomy at clustered breakpoint intervals is a frequent mechanism of NF1 inactivation in myeloid malignancies. *Blood* **108**, 1684–1689 (2006).
63. O’Keefe, C., McDevitt, M. A. & Maciejewski, J. P. Copy neutral loss of heterozygosity: a novel chromosomal lesion in myeloid malignancies. *Blood* **115**, 2731–2739 (2010).
64. Kryh, H. *et al.* Comprehensive SNP array study of frequently used neuroblastoma cell lines; copy neutral loss of heterozygosity is common in the cell lines but uncommon in primary tumors. *BMC Genomics* **12**, 443 (2011).
65. Rugg-Gunn, P. J., Ferguson-Smith, A. C. & Pedersen, R. A. Epigenetic status of human embryonic stem cells. *Nat. Genet.* **37**, 585–587 (2005).
66. Falls, J. G., Pulford, D. J., Wylie, A. A. & Jirtle, R. L. Genomic imprinting: implications for human disease. *Am. J. Pathol.* **154**, 635–647 (1999).
67. Peterson, S. E. & Loring, J. F. Genomic Instability in Pluripotent Stem Cells: Implications for Clinical Applications. *Journal of Biological Chemistry* **289**, 4578–4584 (2014).

Acknowledgements

This work was funded by a Medical Research Council RMRC project grant (MR/K017276/1) and The Cure Parkinson’s Trust. T.K. is a Parkinson’s UK Senior Research Fellow. Z.A.H. and H.D.M. were funded by MRC grant G0801059. Derivation of Man11 and Man12 was supported by several MRC grants to D.R.B. and S.J.K. and the NIHR Welcome Manchester Clinical Research Facility. We thank Victoria Robertson for HLA typing of hESC lines, and we thank Prof Peter Andrews, Dr Paul Travers, Dr Ronnie Wright, and Dr David Turner for critical comments on the manuscript.

Author Contributions

M.A.C. and T.K. designed the study and wrote the paper. M.A.C. and A.V.D. performed experiments, and M.A.C. and T.K. performed data analysis. D.R.B., P.A.D.S., J.D., L.D., Z.A.H., D.I., S.J.K., H.D.M. and H.M. provided samples and edited the manuscript.

Additional Information

Supplementary information accompanies this paper at <http://www.nature.com/srep>

Competing financial interests: The authors declare no competing financial interests.

How to cite this article: Canham, M. A. *et al.* The Molecular Karyotype of 25 Clinical-Grade Human Embryonic Stem Cell Lines. *Sci. Rep.* **5**, 17258; doi: 10.1038/srep17258 (2015).



This work is licensed under a Creative Commons Attribution 4.0 International License. The images or other third party material in this article are included in the article's Creative Commons license, unless indicated otherwise in the credit line; if the material is not included under the Creative Commons license, users will need to obtain permission from the license holder to reproduce the material. To view a copy of this license, visit <http://creativecommons.org/licenses/by/4.0/>